

LENNOX BLDG. DIST. NO. 7

- NOTE:**
 Provide stakes on the property lines or property lines produced at right angles to the sewer line at the center line of each manhole.
 No representative of the County Engineer will survey or layout any portion of the work.
 The owner or his authorized representative shall furnish the County Engineer with grade sheets and stations for all house laterals and T branches and shall provide stakes for them at their proper locations with stationing plainly marked. Any change in location shall be requested in writing by the owner or his representative.
 No revisions shall be made in these plans without the approval of the County Engineer.
1. Use standard manhole frames and covers, S-a-117.
 2. Use standard strength pipe.
 3. Use cement mortar for all vitrified clay pipe joints.
 4. Resurface all trench within paved area to meet L.A. County Road Dept. or California State Highway Dept. requirements in accordance with permit.
 5. Encase four feet of sewer at points of interference with poles 3-a-119.
 6. House laterals to be constructed with inverts at property line 6 feet below curb grade.
 7. All structures shall be brick sewer structures S-a-104.
 8. For allowable leakage test, use Formula No. 1, Specs., Sec. 51.

DOUBLE SCALE

PROFILE, ALIGNMENT AND GRADE OF
 SANITARY SEWERS
 TO BE CONSTRUCTED IN

59TH STREET
 FIRST ALLEY WEST OF LA TIJERA BLVD. TO LA TIJERA BLVD.
 LA TIJERA BOULEVARD
 59TH ST. TO 330 FT. SOUTH OF SLAUSON AVE.
 IN TRACT NO. 16658

PRIVATE CONTRACT NO. 3320
 W. S. 24

1 SHEET
 Scale: VERT. 1" = 4'
 HORIZ. 1" = 40'

NOV. 1954
 PREPARED IN THE OFFICES OF

LOS ANGELES INVESTMENT CO.
 By *[Signature]*
 Reg. C. E. No. 1629

FOR LEGEND SEE PLAN NO. S-a-64

NOTE:
 Grades to which this improvement is to be constructed are shown on plans and profiles. Grade points for top of curbs, center line of streets, or center line of alleys are shown by circles on profiles. All points between designated points the grade shall be established so as to conform to a straight line drawn between said designated points.
 Elevations are 5.775 Ft. above U.S.G.S. datum or mean sea level. See note to left hereon.
 This drawing and the data hereon are hereby made a part of the Specifications.
 Work shall be constructed according to specifications on file in the office of the County Engineer and shall be prosecuted only in the presence of the County Engineer.
 Before work can be started, the Contractor must obtain a permit to excavate in County streets from the L.A. County Road Dept., 108 W. 2nd St. and make a deposit with the County Engineer, 733 L.A. County Engineering Building, sufficient to cover the cost of construction inspection and record plans.
 Approval of this plan by the County of Los Angeles does not constitute a representation as to the accuracy of the location of or the existence or non-existence of any underground utility, pipe, or structure within the limits of this project. This note applies to all sheets.
 If work is to be done in a State Highway, a permit must be obtained from the State of California, Division of Highways, 120 South Spring Street.

COUNTY OF LOS ANGELES, CALIFORNIA
 Approved, William J. Fox, County Engineer
 Approved, A. M. Rawn
 CHIEF ENGR. CO. SAN. DIST. NO. 5
 By *[Signature]* *[Signature]*
 Sanitation Engineer Office Engineer
 Dated by *[Signature]* 1-18-55
 Office of County Engineer, P. O. Box 2860

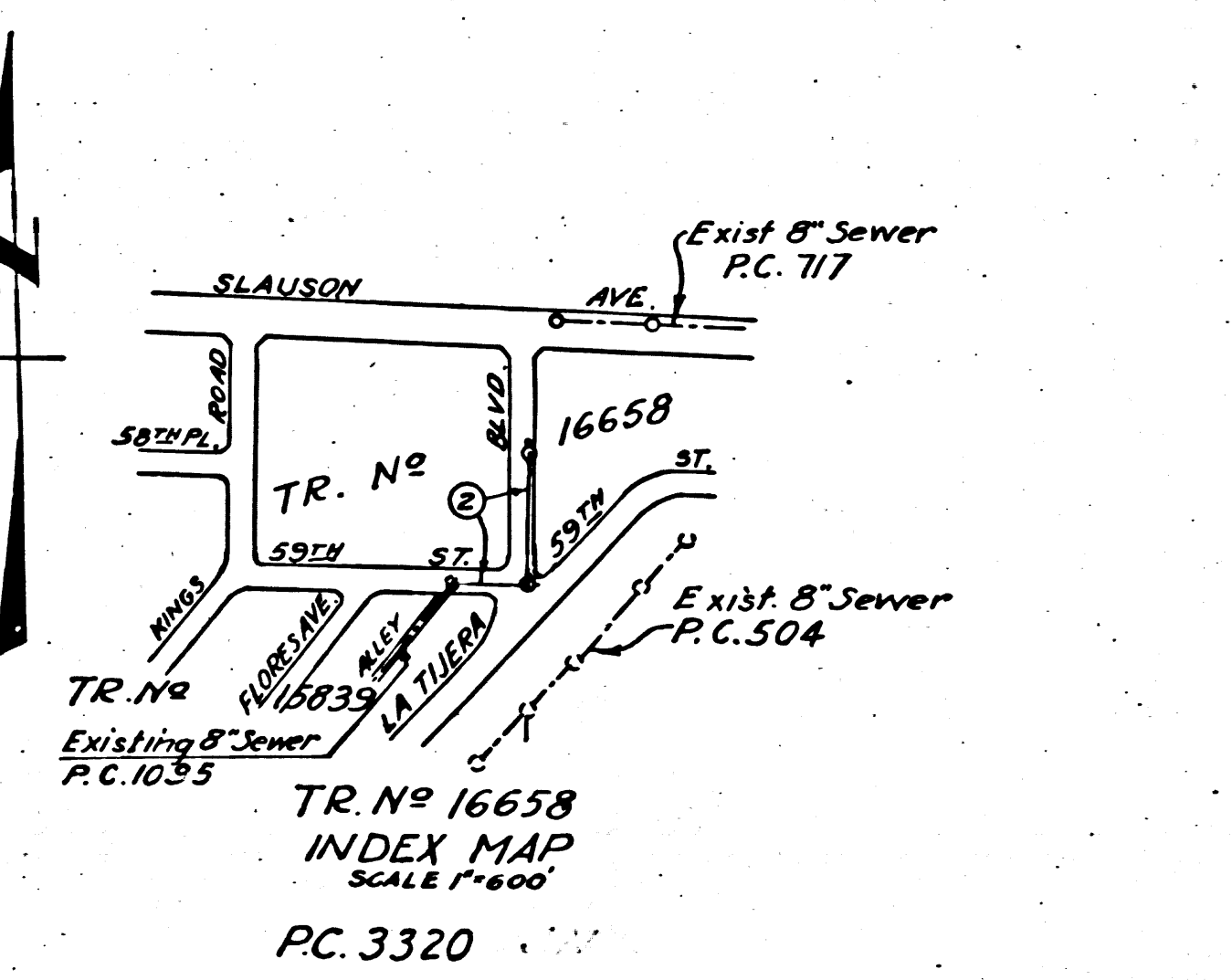
L. & 124 - 359 B.M. AN Elev. 194.11 Bell Washer set in lead
 2 1/2" dia of 1/2" thick 1/2" dia of Slauison Ave. to
 La Tijera Blvd. (F.A. 200-4) L.A. Co.

NOTE: Add 5.775 to bench mark and
 all elevations shown hereon to
 convert to U.S.G.S. elevations.
 Add 5.575 to all elevations shown hereon to
 agree with L.A. County Road Dept. B.M.'s
 (Slauison Ave. Circuit) shown as L. & 254-359

El. 253.00 - Fd. - Screwhead in curb, center
 of curb SW Corner LA TIJERA (6th) and
 SLAUSON F.B. 164 Pg. 51

SHEET NO.	PAGES
1	2

NO CHARGE
 FOR CONNECTIONS
[Signature] 1-18-55



checked 2-15-55 *[Signature]*

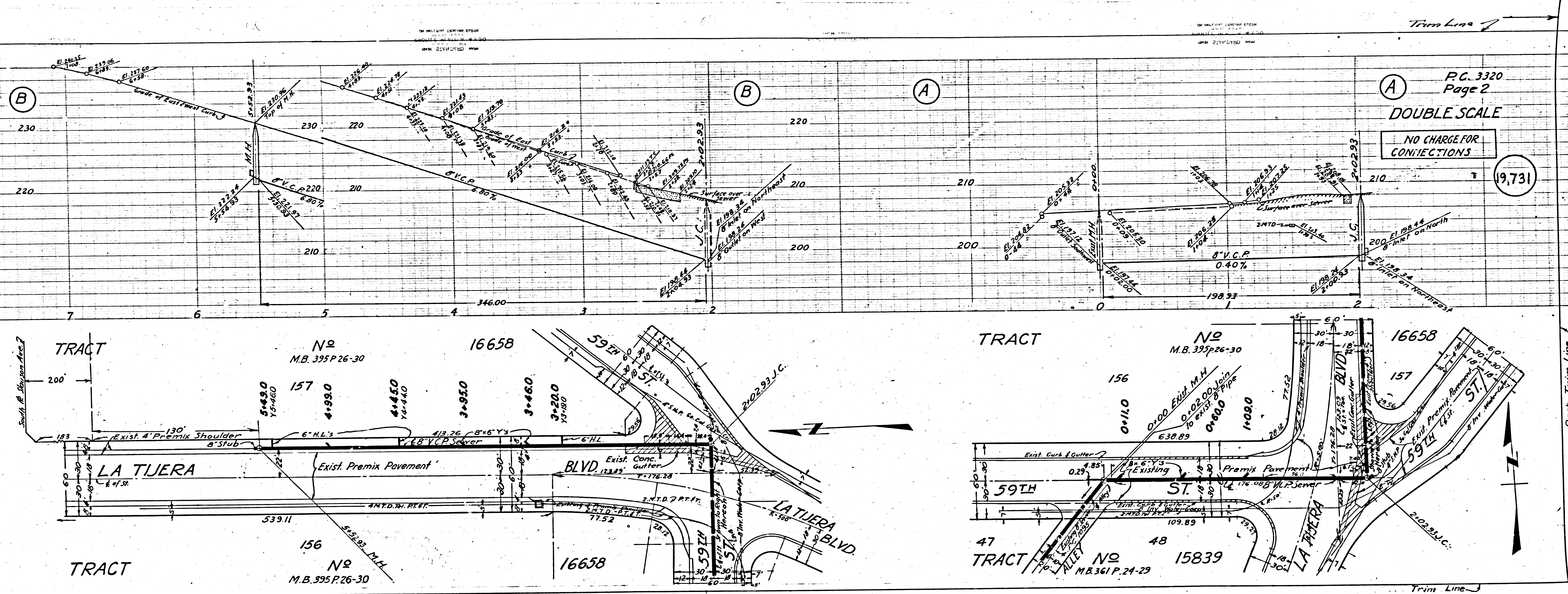
PC. 3320
 PAGE 1
 19,730
 (2)
 59TH ST. FIRST ALLEY WEST OF LA TIJERA BLVD.
 TO LA TIJERA BLVD.
 LA TIJERA BLVD. 59TH ST. TO 330 FT.
 SOUTH OF SLAUSON AVE.
 IN TRACT NO. 16658
 PC. 3320
 SEE CA
 1-18-55

31

Page Trim Line

Trim Line

PC 3370



PC. 3320
Page 2
DOUBLE SCALE
NO CHARGE FOR
CONNECTIONS

19,731

