

EAST LOS ANGELES BLDG. DIST. NO 6

- (1) USE STANDARD MANHOLE FRAME AND COVER S-a-117
- (2) USE EXTRA STRENGTH PIPE
- (3) USE CEMENT MORTAR FOR ALL VITRIFIED CLAY PIPE JOINTS
- (4) RESURFACE ALL TRENCH WITHIN PAVED AREA TO MEET LOS ANGELES COUNTY ROAD DEPT. REQUIREMENTS IN ACCORDANCE WITH THE PERMIT
- (5) CONSTRUCT HOUSE LATERALS WITH INVERT AT PROPERTY LINE 6 FEET BELOW CURB GRADE
- (6) ENCASE FOUR FEET OF SEWER AT POINTS OF INTERFERENCE WITH POLES AS PER S-a-119
- (7) ALL STRUCTURES SHALL BE BRICK SEWER STRUCTURES S-a-104

- (8) FOR ALLOWABLE LEAKAGE TEST, USE FORMULA NO. 1, SPEC'S. SEC. 51
- (9) THE CONTRACTOR SHALL SATISFY HIMSELF OF ALL SUBSTRUCTURES AND SHALL BE RESPONSIBLE FOR THEIR LOCATION

NOTE:

No Representative of the County Engineer will survey or lay out any portion of the work. The owner or his authorized representative shall furnish the County Engineer with grade sheets and stations of all house laterals and Y branches and shall provide stakes for them at their proper locations with stationing plainly marked. Any change of location shall be requested in writing by the owner or his representative. No revisions shall be made in these plans without approval of the County Engineer.

NOTE:

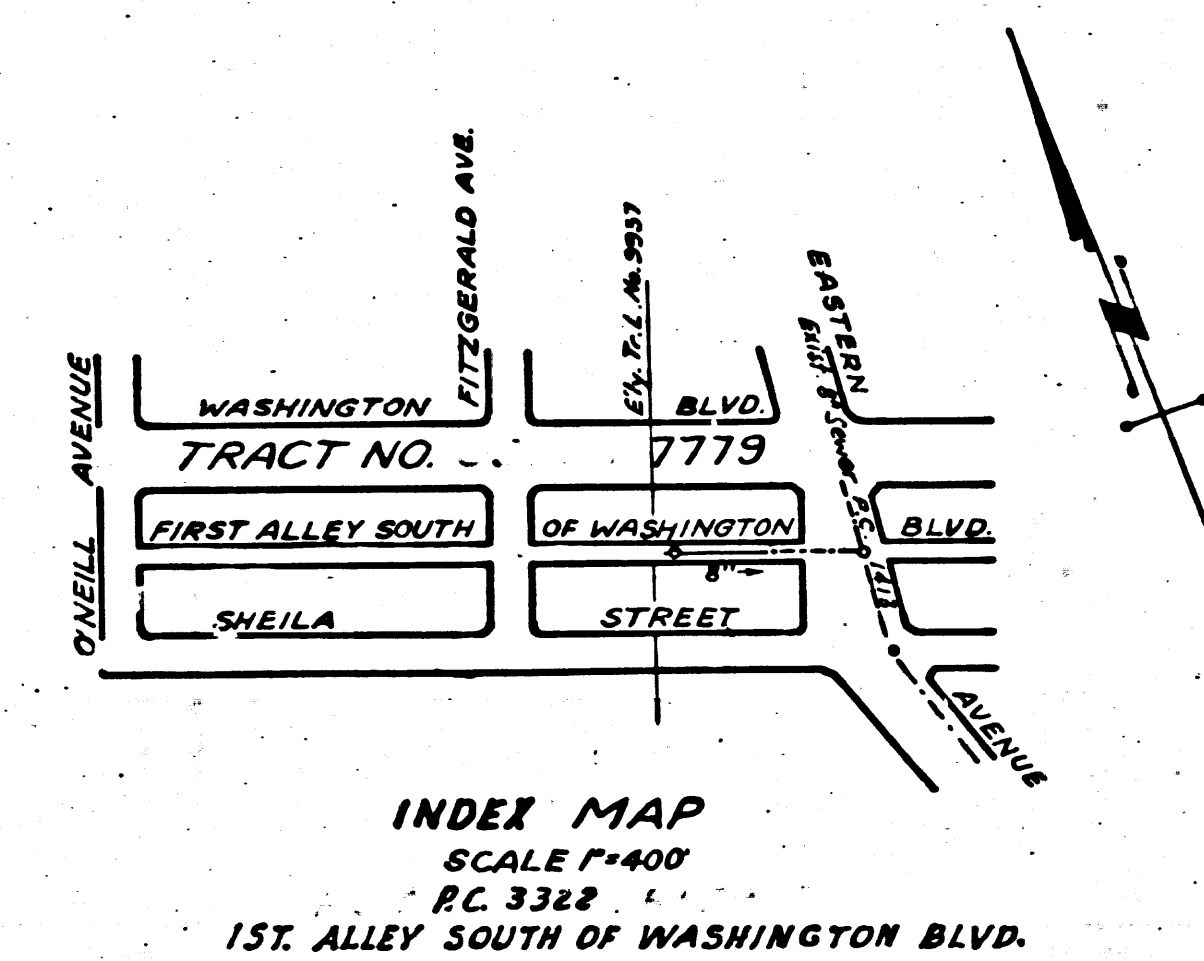
Provide stakes on the property lines or property lines produced at right angles to the sewer line at the center line of each manhole.

B.M. = Elev. = 144.58 - Est from in. of 8" in. of So. of M.N. end of 1st Alley No. of Washington Blvd. & Strong Ave. Nail in R.P. # 322040 E from Strong Ave. in Alley bet. Washington Blvd. & Jilson St. per P.C. 228

Note: B.M. Elev. = 127.11 per P.C. 1413 B.M. Elev. per P.C. 228 & 1751 = 126.96 - Est from inlet of cur. M.N. E3.5 So. and 86.5 E. of intersection of Washington & Eastern ave.

Sheet	Pages
1	1-2

COLLECT CHARGES
15 INDICATED
12-22-54



Checked 2-4-55 *W. H. Fair Jr.*

REVISION APPROVED BY *W. H. Fair Jr.* 1-25-55
OFFICE OF COUNTY ENGR. REG. C.E. NO. 2860

P.C. 3322
PAGE 1

PROFILE ALIGNMENT AND GRADE OF
SANITARY SEWERS
TO BE CONSTRUCTED IN
FIRST ALLEY SOUTH WASHINGTON BLVD.

IN TRACT NO. 7773 M.B. 149-43
PRIVATE CONTRACT 3322
W.S. 36

DECEMBER, 1954

PREPARED IN THE OFFICES OF
WM. H. FAIR JR.
BY: *W. H. Fair Jr.*
REG. C.E. NO. 2583

FOR LEGEND
See Plan No. S-a-64

(19.672)
(2)

NOTE: Grades to which this improvement is to be constructed are shown on Plans and Profile. Grade points for top of curb, center line of street or center line of Alley are shown by circles on Profiles. At all points between designated points the grade shall be established so as to conform to a straight line drawn between said designated points. Elevations are in feet above U.S.C.S. datum or Mean Sea Level. This drawing and the data hereon are hereby made a part of the specifications. Work shall be constructed according to specifications on file in the office of the County Engineer and shall be prosecuted only in the presence of the County Engineer. Before work can be started the Contractor must obtain a permit to excavate in County Streets from the L.A. County Road Dept. 108 W. Second St. and make a deposit with the County Engineer, 733 L.A. County Engineering Bldg. sufficient to cover the cost of construction, inspection and record. Plans if work is to be done in a State Highway, a permit must be obtained from the State of California, Division of Highways, 120 S. Spring St. after making the deposit with the County Engineer. Approval of this Plan by the County of Los Angeles does not constitute a representation as to the accuracy of the location of or the existence or non-existence of any underground utility, pipe or structure within the limits of this project.

COUNTY OF LOS ANGELES, CALIFORNIA

APPROVED *W. H. Fair Jr.* SANITATION ENGINEER APPROVED BY *W. H. Fair Jr.* CHIEF ENGINEER OF COUNTY SANITATION DISTRICT NO. 2

CHECKED BY *W. H. Fair Jr.* 12-22-54 OFFICE OF COUNTY ENGINEER REG. C.E. NO. 78 50

19.672-54
1ST. ALLEY SOUTH OF WASHINGTON BLVD.

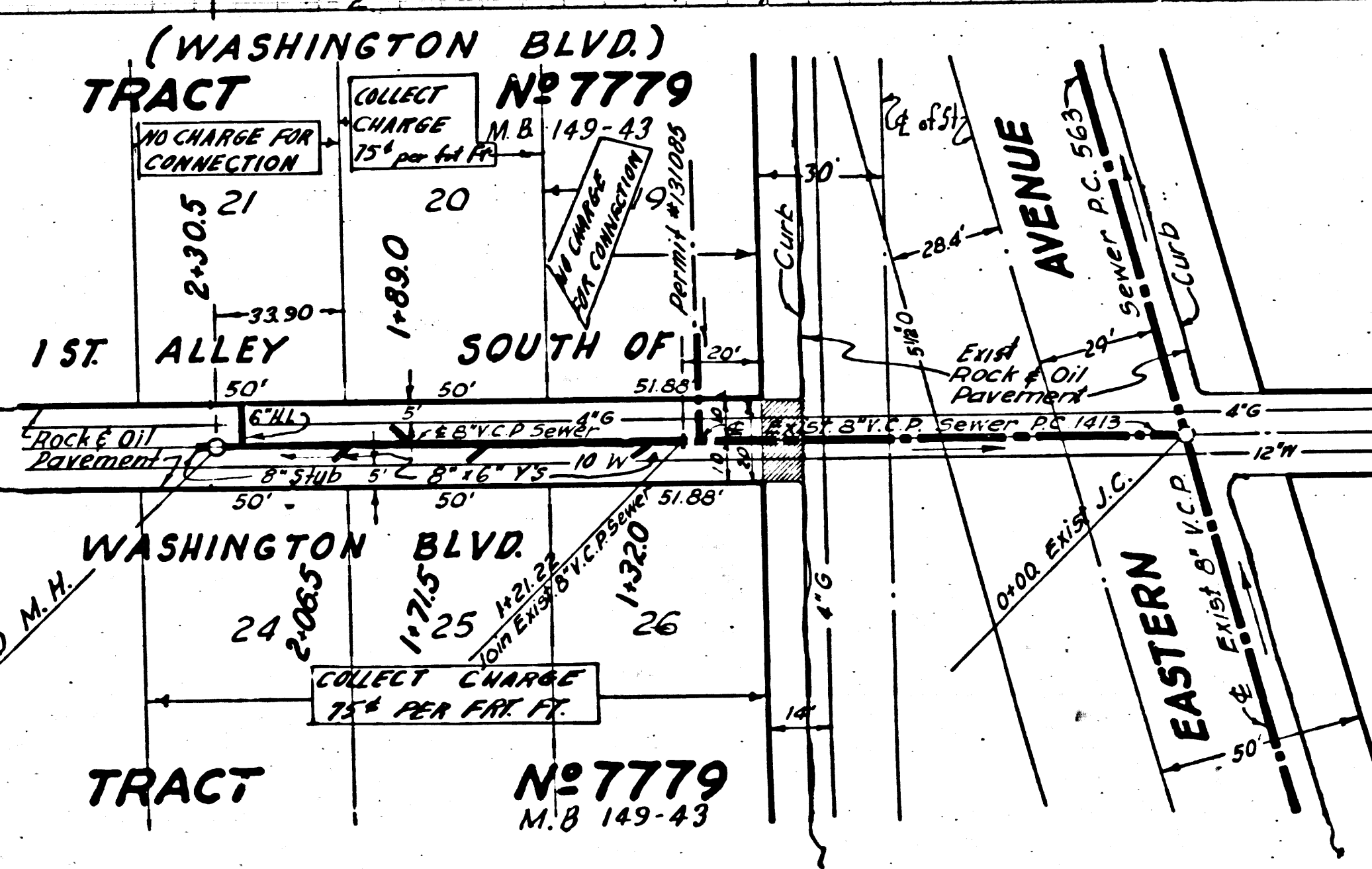
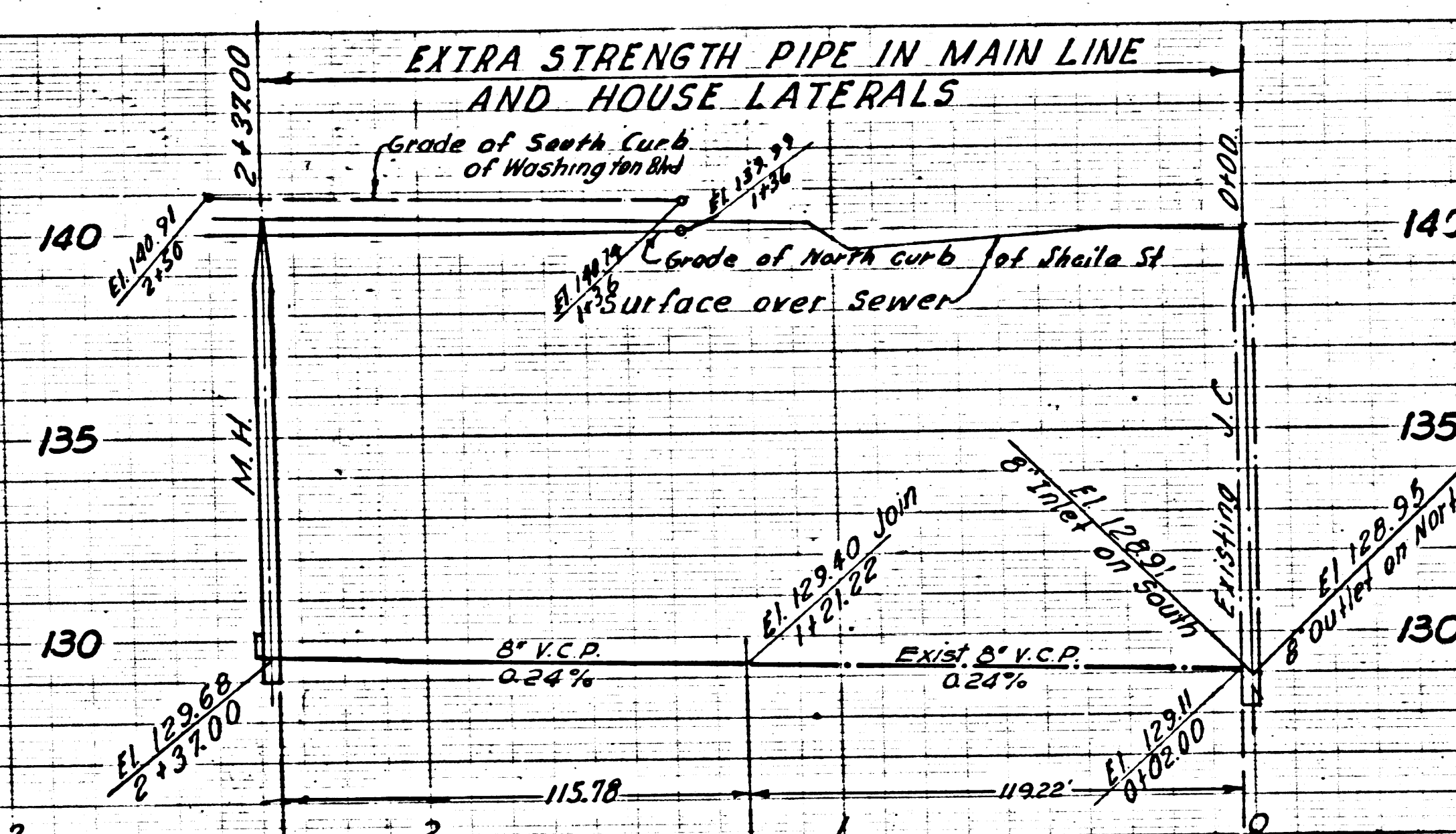
Trim Line 2

P.C. 3322

Page 2

COLLECT CHARGES AS INDICATED

19,673



Trim Line J