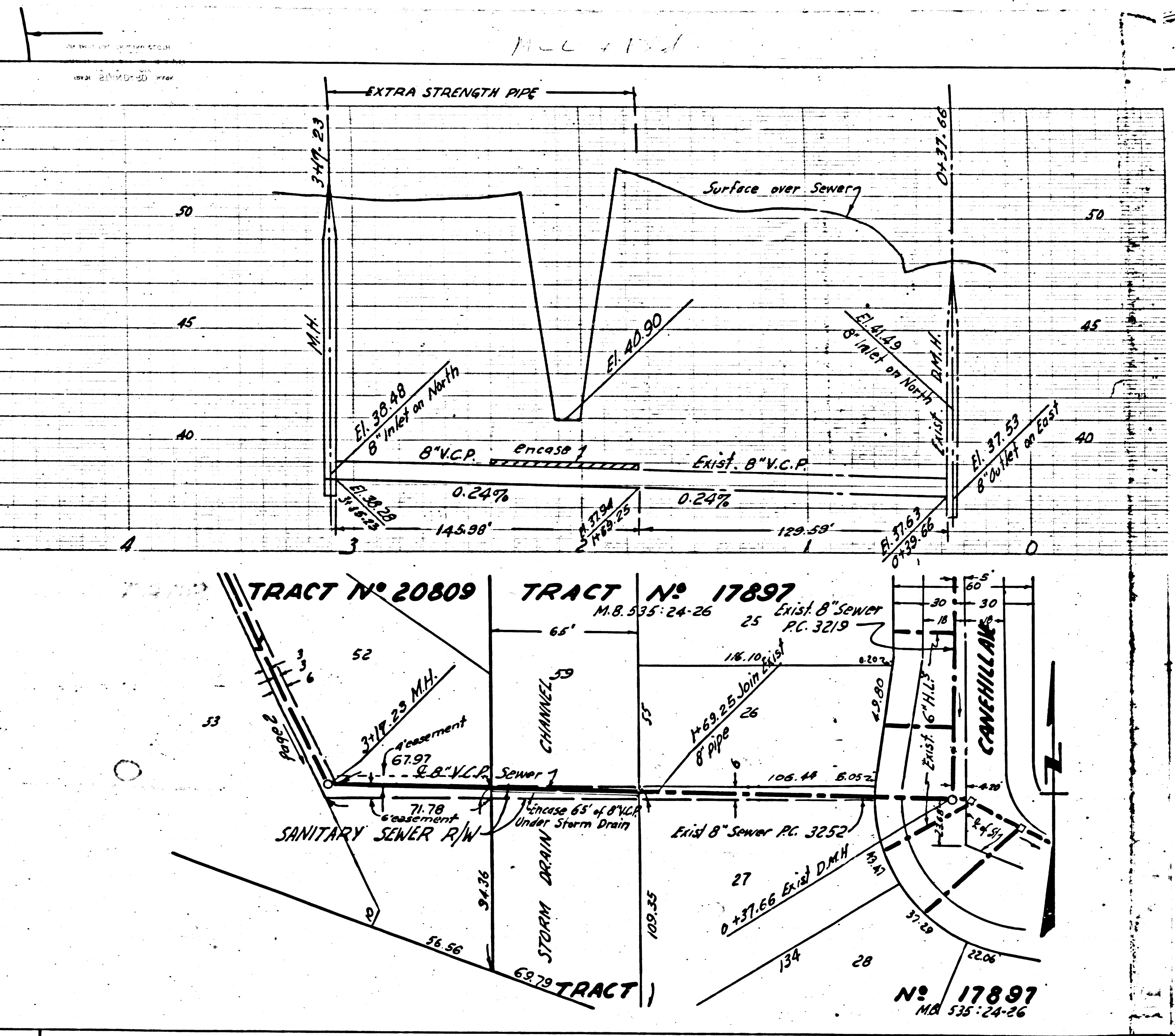


PC. 3331
Page 2

NO CHARGE FOR CONNECTIONS

21,105

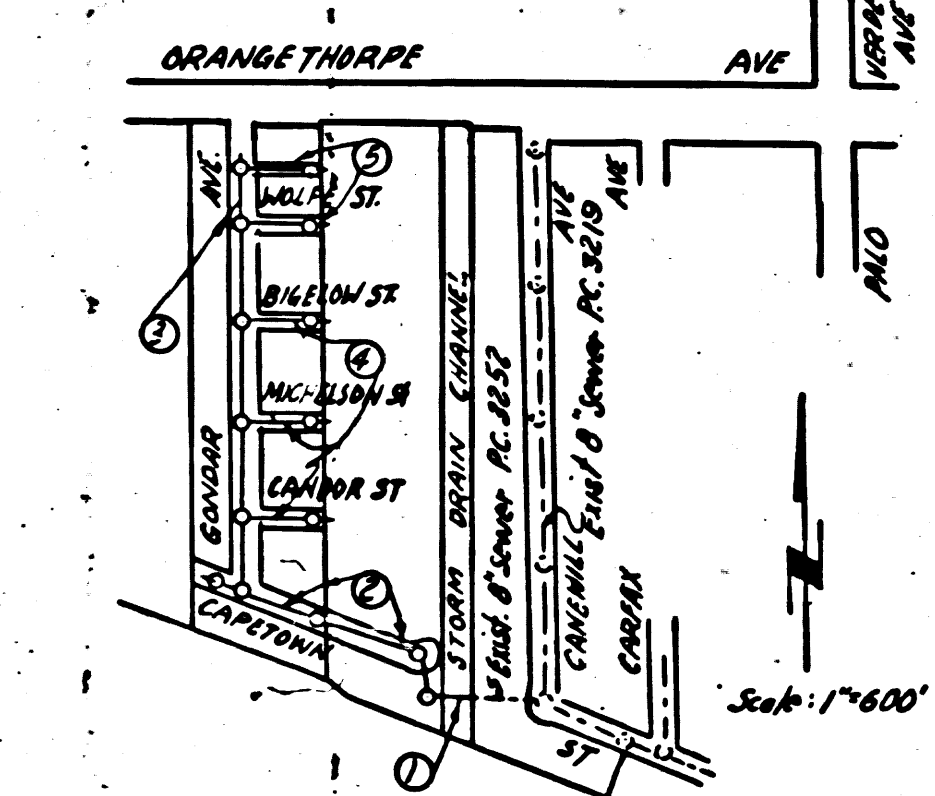
17897
M.B. 535-24-26



NOTE: BELLFLOWER BLDG DIST NO 4

- Provide stakes on the property lines or property lines produced at right angles to the sewer line at the center line of each manhole.
- No representative of the County Engineer will survey or layout any portion of the work. The owner or his authorized representative shall furnish the County Engineer with grade sheets and stations for all house laterals and Y branches and shall provide stakes for them at their proper locations with stationing plainly marked. Any change in location shall be requested in writing by the owner or his representative.
- No revisions shall be made in these plans without the approval of the County Engineer.
1. Use standard manhole frames and covers, S-a-117.
 2. Use standard strength pipe except as noted.
 3. Use joint compound "A" or "B" for all vitrified clay pipe joints per specs, sec 31
 4. Resurface all trench within paved area to meet L.A. County Road Dept. or California State Highway Dept. requirements in accordance with permit.
 5. Encase four feet of sewer at points of interference with poles, S-a-119.
 6. House laterals to be constructed with inverts at property line 6 feet below curb grade except as noted.
 7. All structures shall be brick sewer structures, S-a-104.
 8. For allowable leakage test, use Formula No. 2 Spec's., Sec. 51.
 9. Manhole tops in unimproved Rights-Of-Way to be 6" above finish grade.

B.M. SY 753 El. 52104 Cut spk in conc. pmt
14' S of E. Orange Thorne Ave 285'
W. of E. of Palo Verde Ave.



NO CHARGE FOR CONNECTIONS
S-a-117

REVISION CHECKED 2-V. On 8-17-55
Office of County Engineer
R.L.C. No. 3406

checked 8-16-55 Warren

PROFILE ALIGNMENT AND GRADE OF
SANITARY SEWERS
TO BE CONSTRUCTED IN
TRACT NO 18282

PRIVATE CONTRACT NO. 3331
W. S. 31
ONE SHEET
Scale: VERT. 1"=4'
HORIZ. 1"=40'
DEC. 1954
PREPARED IN THE OFFICES OF
BARCLAY SURVEYING COMPANY

FOR LEGEND SEE PLAN NO. S-a-64

NOTE:

Grades to which this improvement is to be constructed are shown on plans and profiles. Grade points for top of curbs, center line of streets, or center line of alleys are shown by circles on profiles. At all points between designated points the grade shall be established so as to conform to a straight line drawn between said designated points.

Elevations are in feet above U.S.G.S. datum or mean sea level.

This drawing and the data hereon are hereby made a part of the specifications.

Work shall be prosecuted only in the presence of the County Engineer.

Before work can be started, the contractor must obtain a permit to excavate in County streets from the L.A. County Road Dept., 108 W. 2nd St. and make a deposit with the County Engineer, 133 L.A. County Engineering Building, sufficient to cover the cost of construction inspection and record plans.

Approval of this plan by the County of Los Angeles does not constitute a representation as to the accuracy of the location of or the existence or non-existence of any underground utility, pipe, or structure within the limits of this project. This note applies to all sheets.

If work is to be done in a State Highway, a permit must be obtained from the State of California, Division of Highways, 120 South Spring Street.

COUNTY OF LOS ANGELES, CALIFORNIA

Approved, William J. Fox, County Engineer
Approved, A. M. Ravn
CHIEF ENGR. CO. SAN DIST. NO. 3
Checked by: R.P. Perkins 2-9-55
Office of County Engineer, Reg. C. E. No. 7860.

21,104

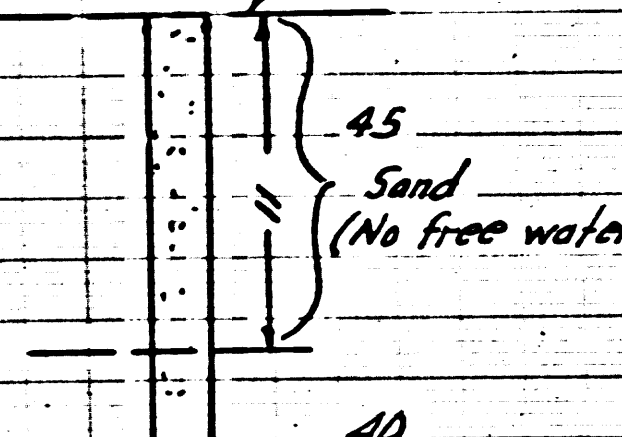
PC. 3331, TRACT NO. 18282

NO CHARGE FOR CONNECTIONS

21,106

(B)

TEST BORING
E. INT. GONDAR AVE & CAPE TOWN ST
Exist. Surface El. 51.10



8" V.C.P.
0.24%

8" V.C.P.
0.24%

8" V.C.P.
0.24%

8" V.C.P.
0.24%

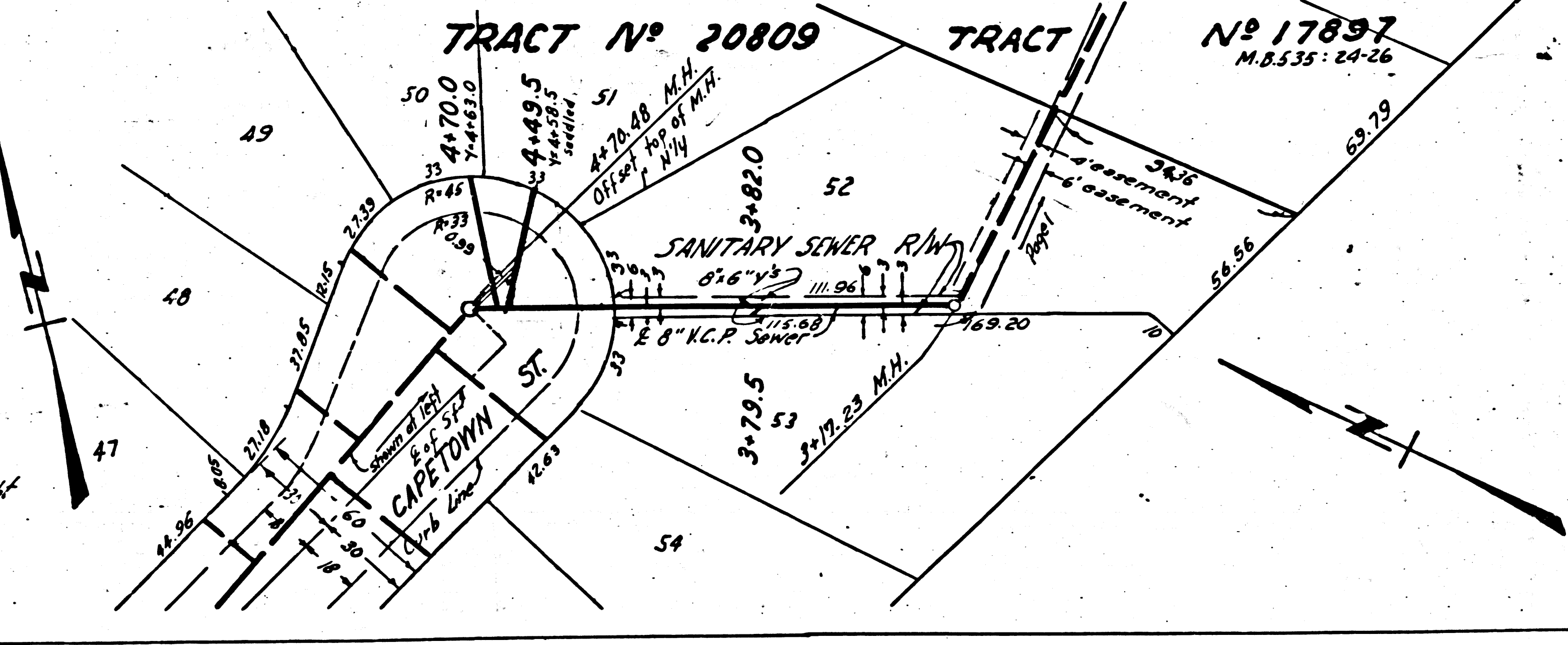
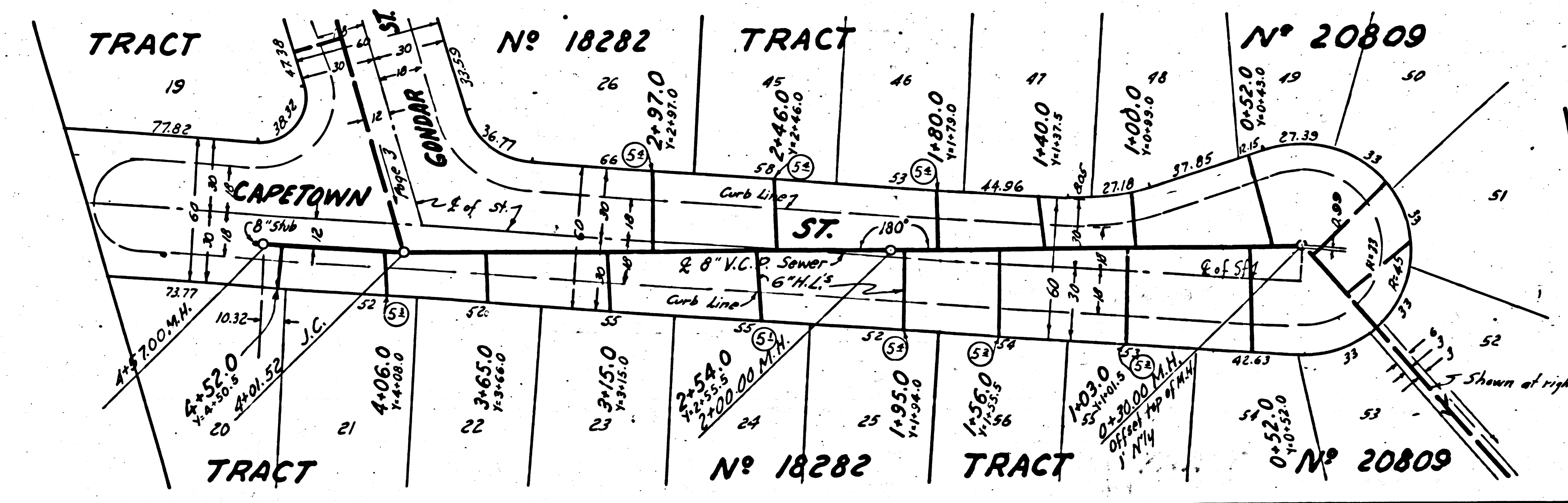
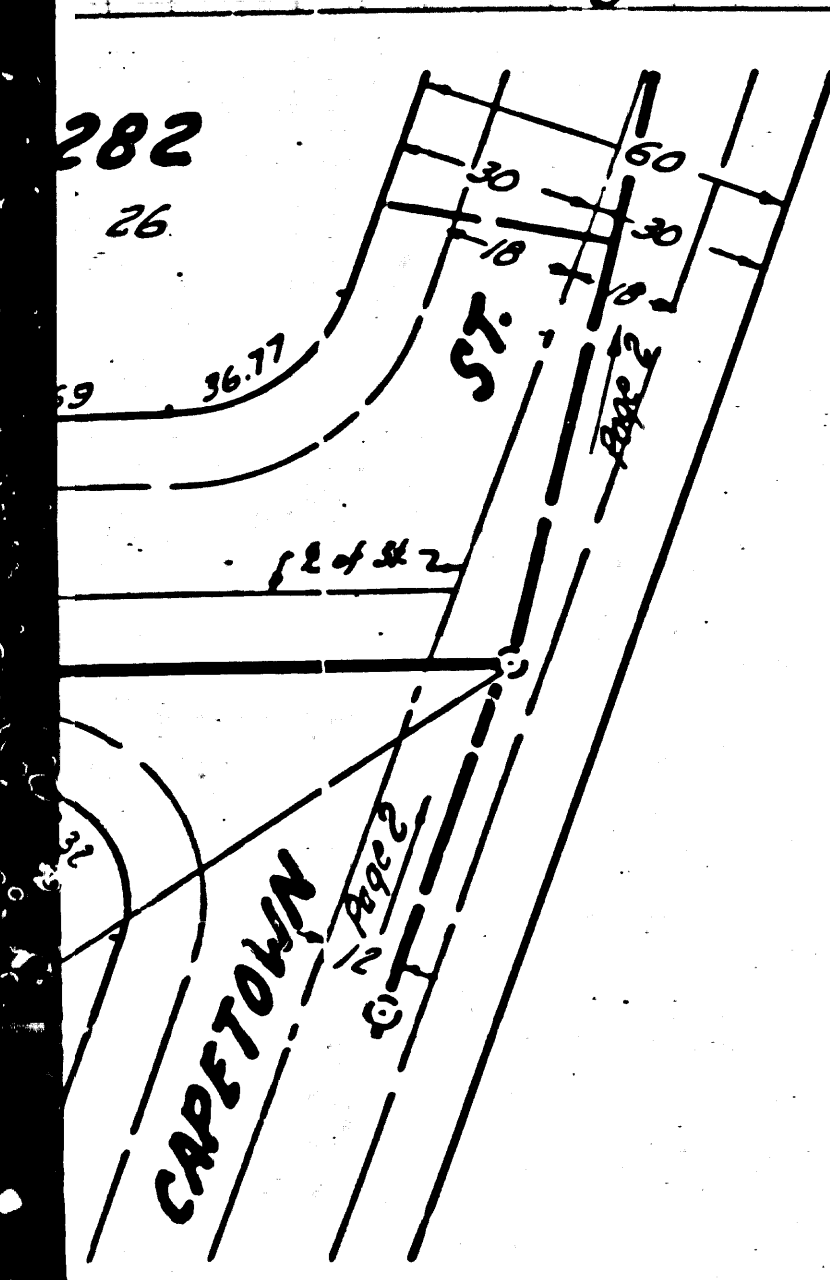
(B)

(A)

EXTRA STRENGTH PIPE

NO CHARGE FOR CONNECTIONS

21,105



P.C. 3331
Page 4

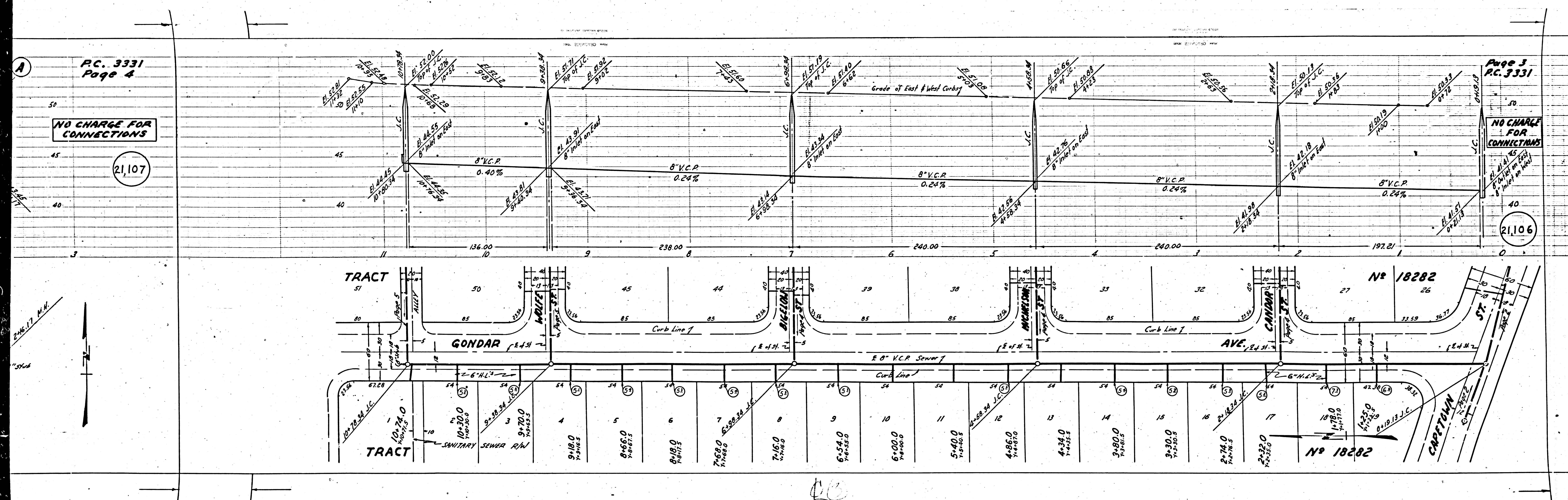
NO CHARGE FOR
CONNECTIONS

21,107

Page 3
P.C. 3331

NO CHARGE FOR
CONNECTIONS

21,106



TRACT 51

TRACT

GONDAR

AVC.

TRACT 26

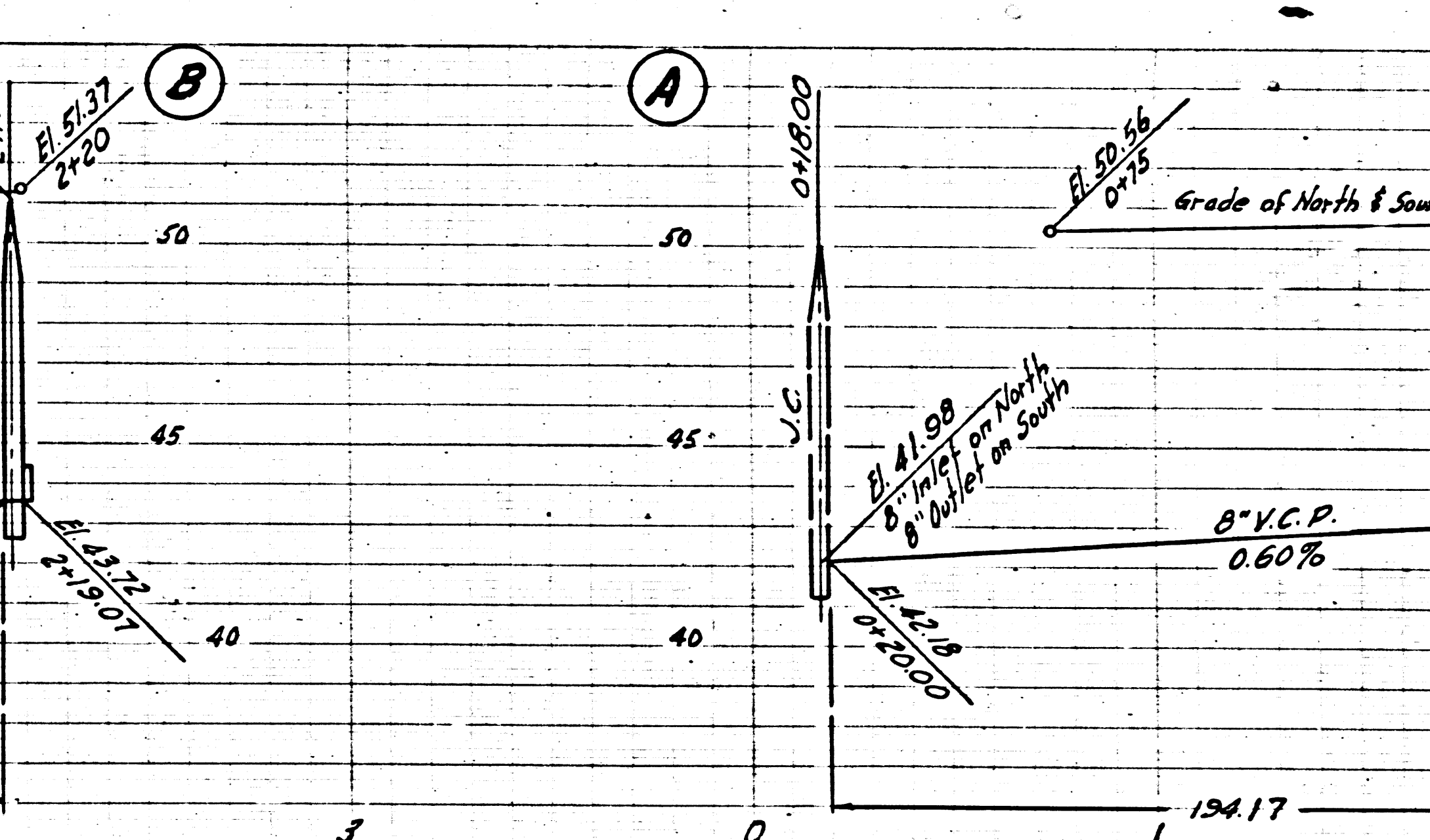
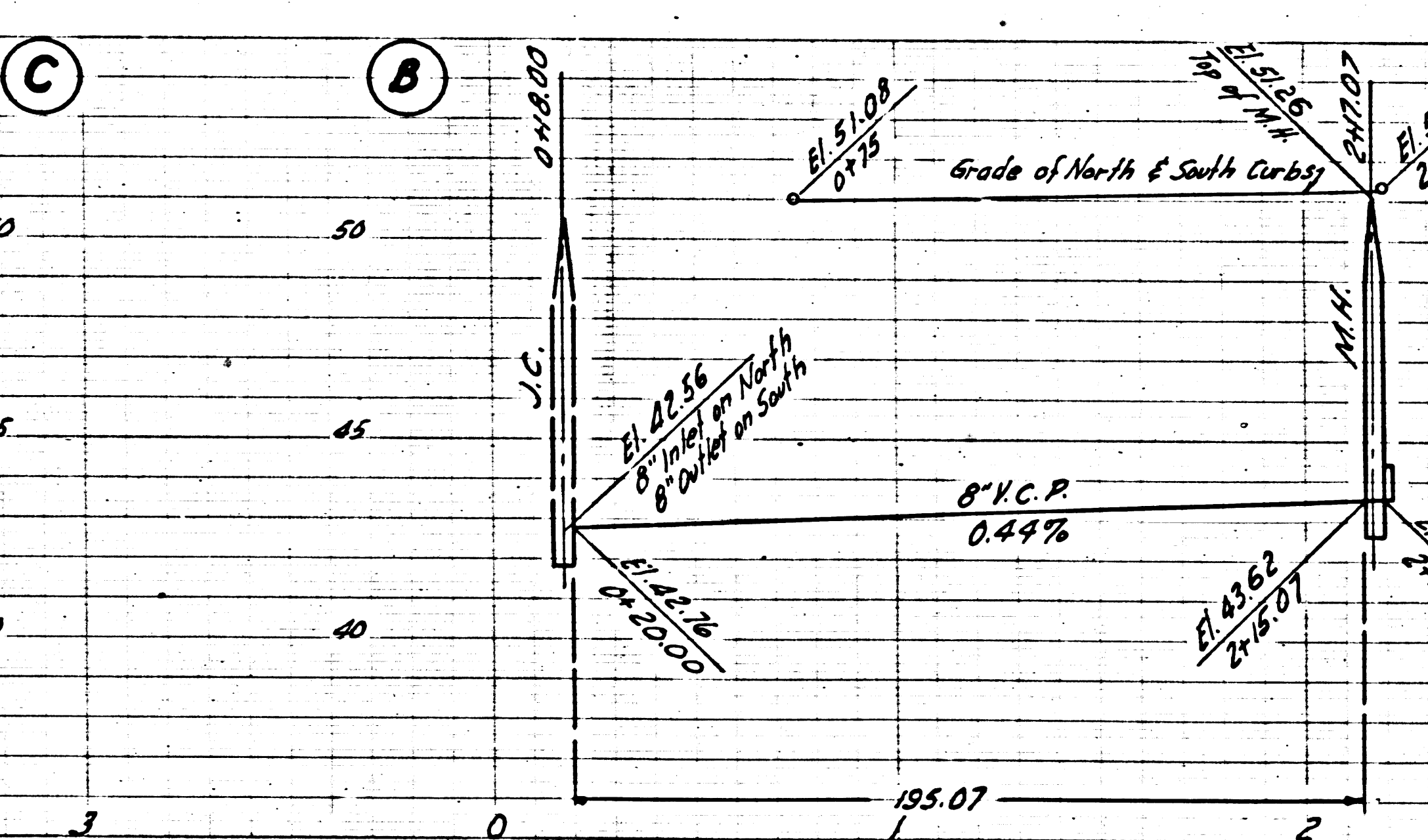
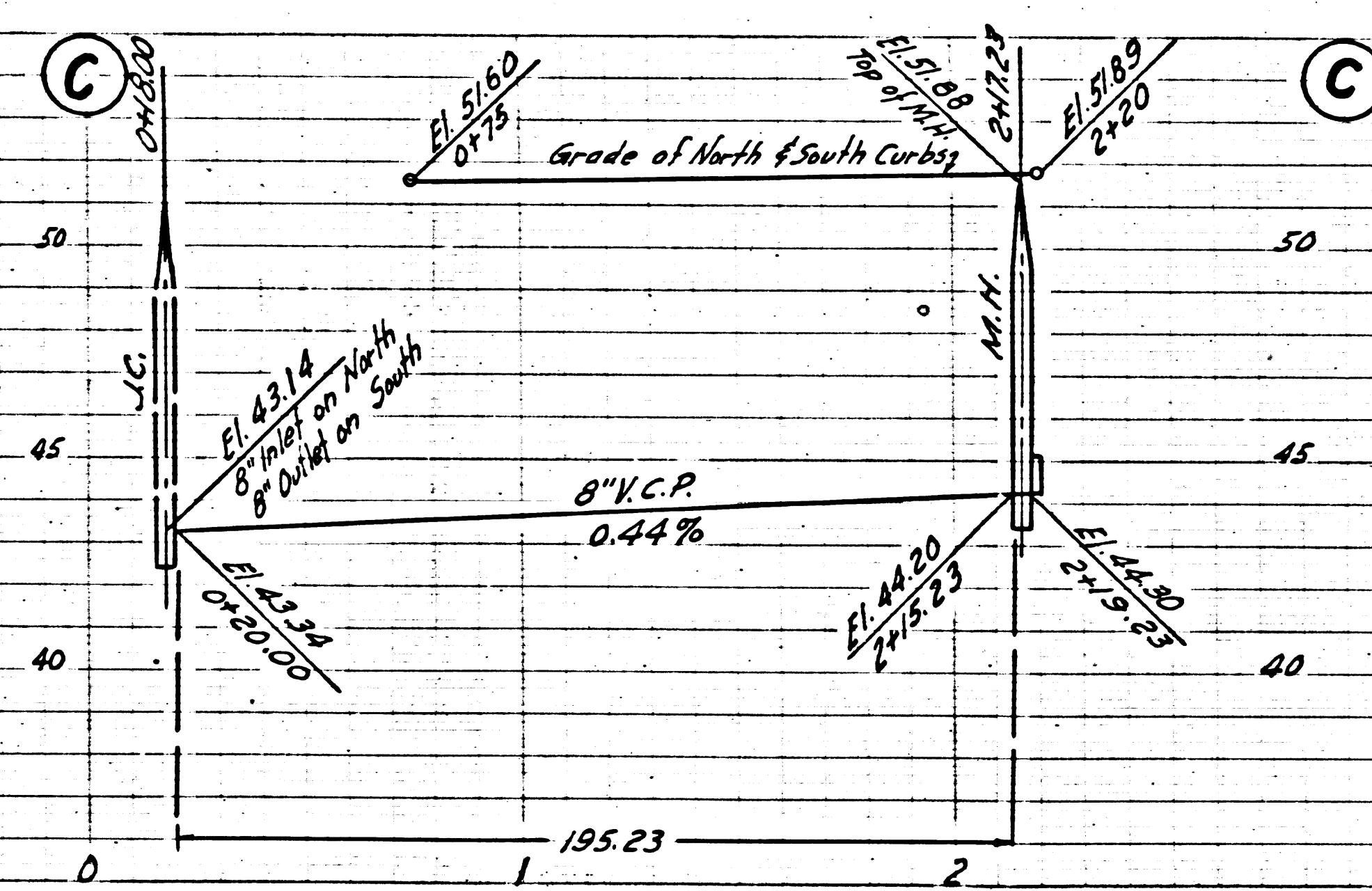
TRACT

- 1 9+18.0 4+316.5
- 2 8+66.0 4+887.5
- 3 9+18.0 4+817.5
- 4 7+68.0 4+768.0
- 5 7+16.0 4+716.0
- 6 6+54.0 4+654.0
- 7 6+00.0 4+600.0
- 8 5+40.0 4+540.0
- 9 4+86.0 4+486.0
- 10 4+34.0 4+434.0
- 11 3+80.0 4+380.0
- 12 3+30.0 4+330.0
- 13 2+74.0 4+274.0
- 14 2+22.0 4+252.0
- 15 1+78.0 4+217.0
- 16 1+25.0 4+175.0
- 17 0+19.3 J.C.

P.C. 3331
Page 5

NO CHARGE FOR CONNECTIONS

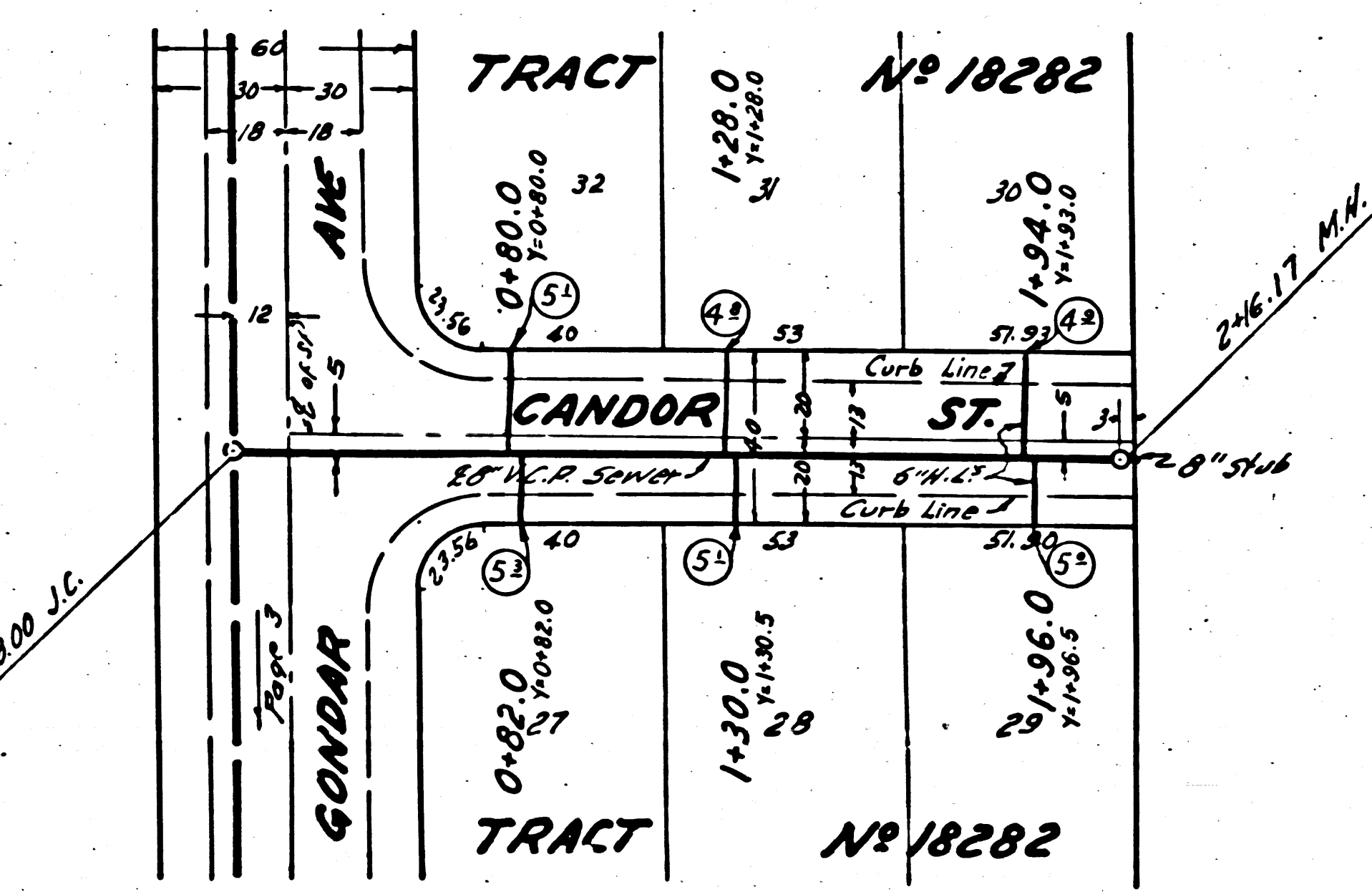
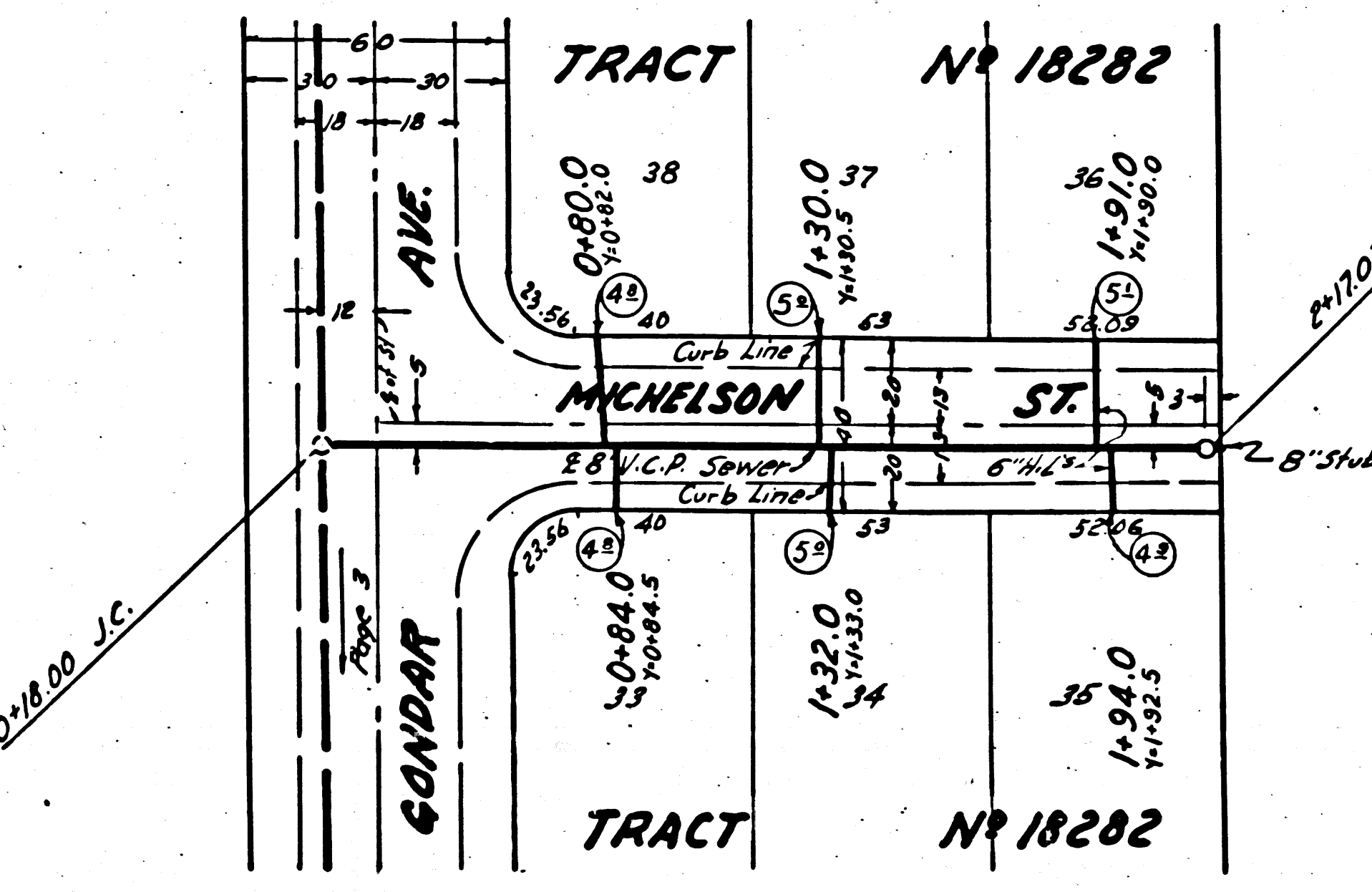
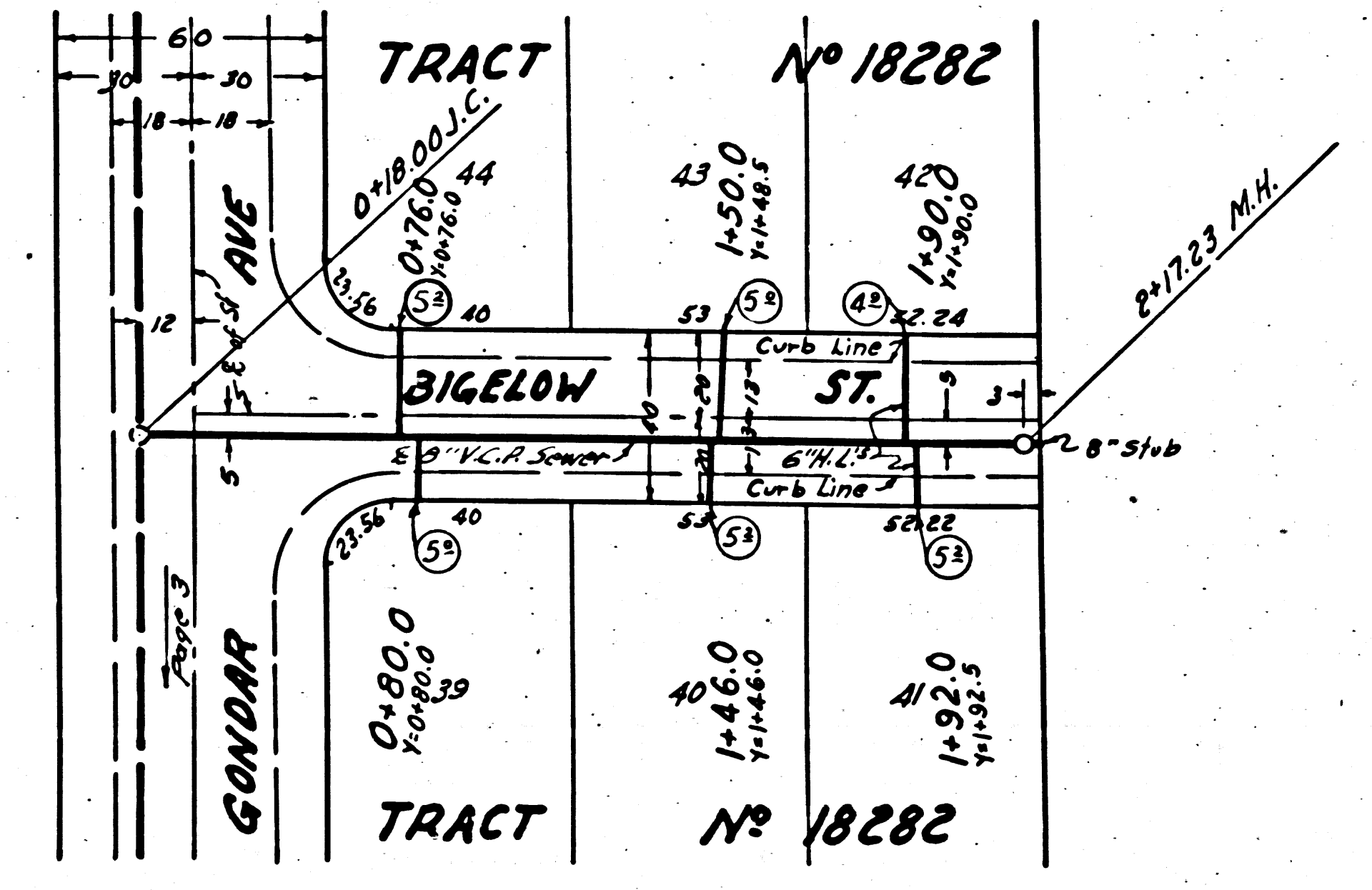
21,108

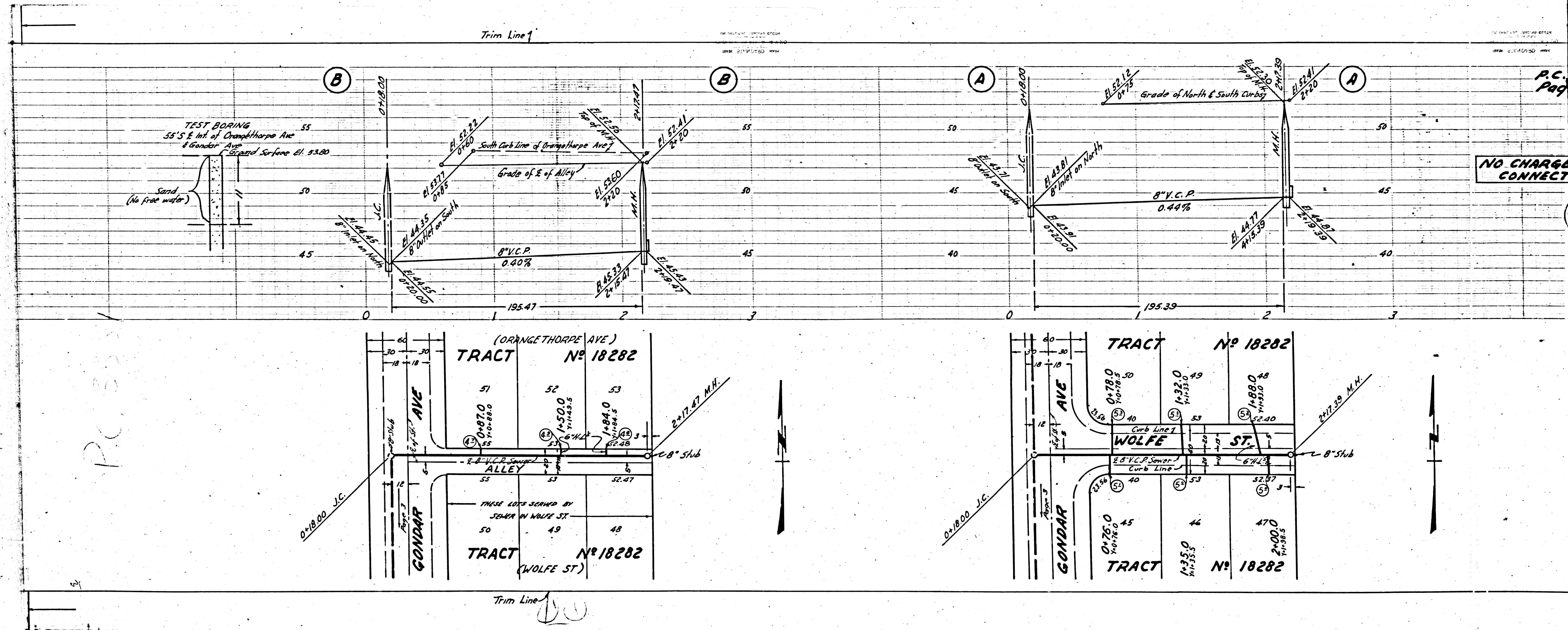


P.C. 3331
Page 4

NO CHARGE FOR CONNECTIONS

21,107

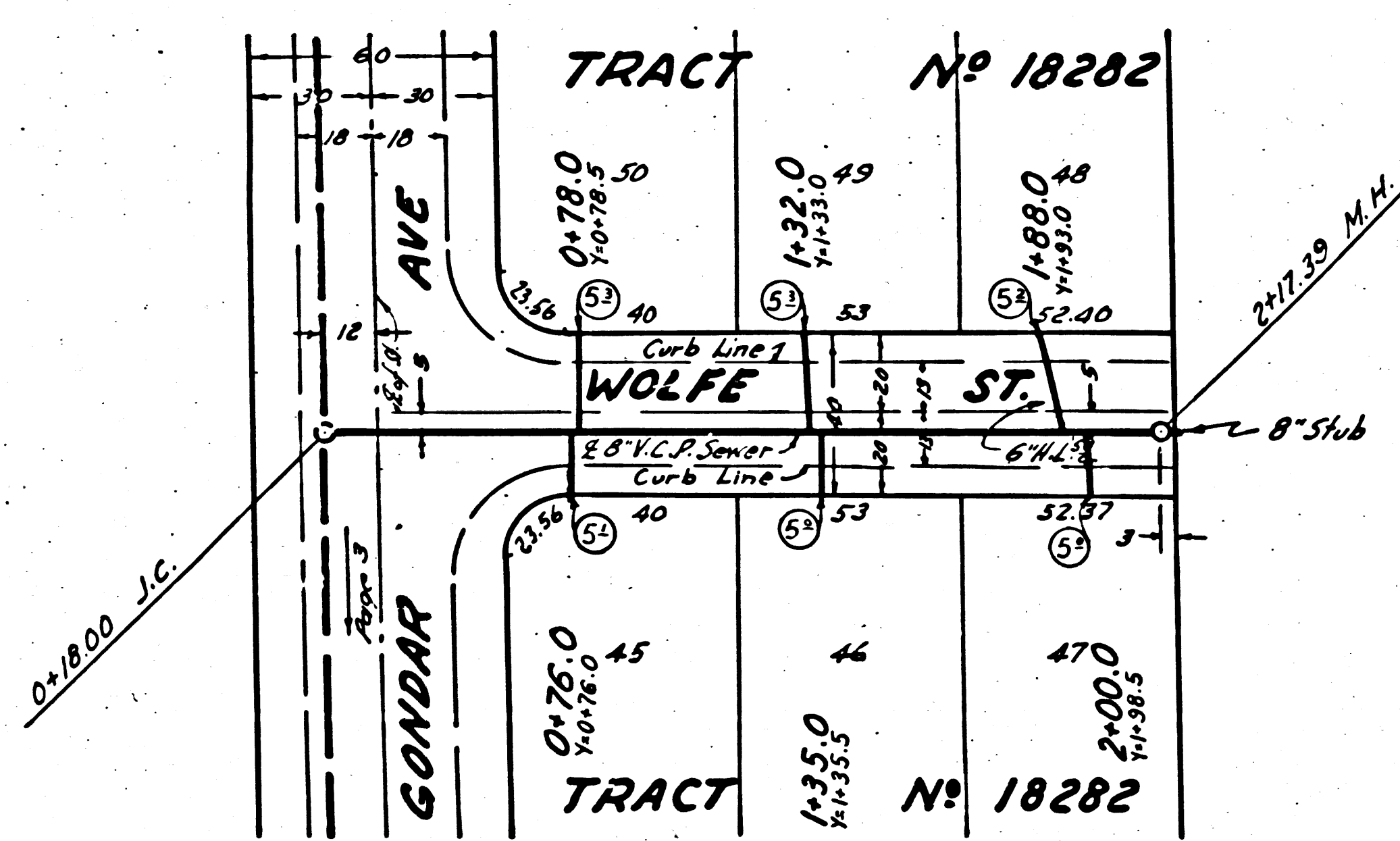
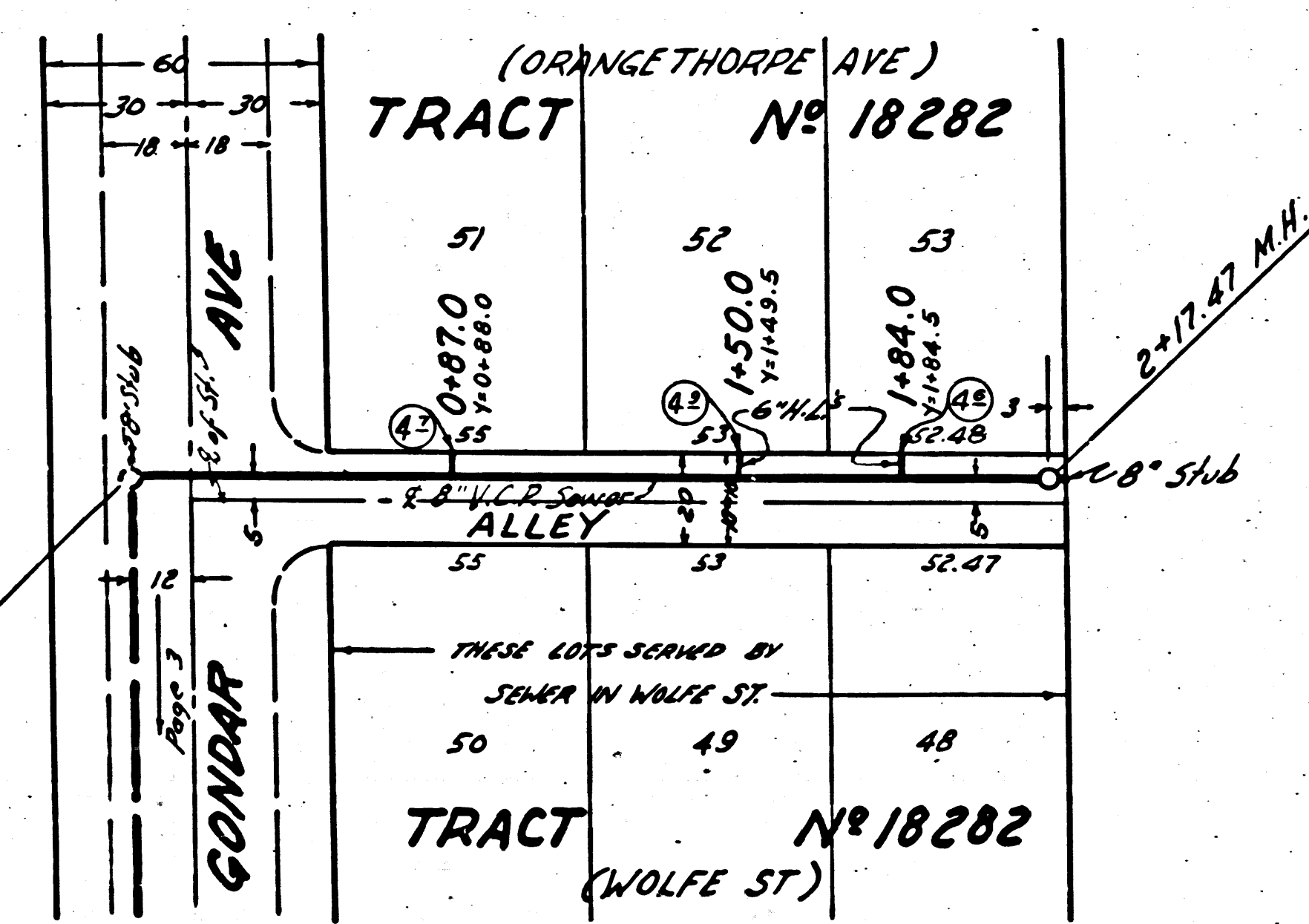




P.C.
Page

NO CHARGE
CONNECT

P.C. 330



Trim Line