

Trim Line

SHT 1 of 1

PALMDALE Bldg. Dist. No. 8-P

PROFILE, ALIGNMENT AND GRADE OF  
SANITARY SEWERS  
TO BE CONSTRUCTED IN  
TRACT No 20209

P. C. 3334  
PAGE 1

19,738

PRIVATE CONTRACT NO. 3334  
W. S. 65

DECEMBER 1954  
Scale: VERT. 1"=4'  
HORIZ. 1"=40'  
PREPARED IN THE OFFICES OF  
KARL TUTTLE ENGINEERING CO.  
By Harold R. Johnson 1-10-55  
Reg. C. E. No. 7668  
FOR LEGEND SEE PLAN NO. S-a-64

(2)

TRACT No 20209

AR 0 N- 5055A

P.C. 3334

RK: # 18-6 & intersection of Ave Q  
in a well protected by a cast iron  
County Surveyors monument A Sid.  
yors Monument marked Sec 24, 19,  
R 12W; R 11W. Set in concrete 13"  
surface. Elev. taken on edge of brass  
st letter "m" in monument. Elev 2596.923

- NOTE:
- Provide stakes on the property lines or property lines produced at right angles to the sewer line at the center line of each manhole.
  - No representative of the County Engineer will survey or layout any portion of the work.
  - The owner or his authorized representative shall furnish the County Engineer with grade sheets and stations for all house laterals and Y branches and shall provide stakes for them at their proper locations with stationing plainly marked. Any change in location shall be requested in writing by the owner or his representative.
  - No revisions shall be made in these plans without the approval of the County Engineer.
  - 1. Use standard manhole frames and covers, S-a-117.
  - 2. Use standard strength pipe except as noted.
  - 3. Use cement mortar for all vitrified clay pipe joints.
  - 4. Resurface all trench within paved area to meet L.A. County Road Dept. or Calif. State Highway Dept. requirements in accordance with permit.
  - 5. Encase four feet of sewer at points of interference with poles, S-a-119.
  - 6. House laterals to be constructed with inverts at property line.....6.....feet below curb grade except as noted.
  - 7. All structures shall be brick sewer structures, S-a-104.
  - 8. For allowable leakage test, use Formula No. 1....., Spec's., Sec. 51.
  - 9. Manhole tops in unimproved Rights-of-Way to be 6" above finish grade.
  - 10. BALL ALL PIPE JOINTS WITH 4" CEMENT MORTAR THAT ARE WITHIN 20 FEET OF ALL PROPERTY LINES OR IN SANITARY SEWER R/W'S.

NO CHARGE FOR CONNECTIONS  
R. E. Kuhns 1-10-55

NOTE: Lots 4 and 10 and 13 thru 42 incl.  
are served by house laterals  
constructed under P.C. 3115.

SHEET No	PAGES
1	1-2

dated 2-17-55 W. J. Fox

Trim Line

NOTE:

Grades to which this improvement is to be constructed are shown on plans and profiles. Grade points for top of curbs, center line of streets, or center line of alleys are shown by circles on profiles. At all points between designated points the grade shall be established so as to conform to a straight line drawn between said designated points.

Elevations are in feet above U.S.G.S. datum or mean sea level.

This drawing and the data hereon are hereby made a part of the specifications.

Work shall be constructed according to specifications on file in the office of the County Engineer and shall be prosecuted only in the presence of the County Engineer.

Before work can be started, the contractor must obtain a permit to excavate in County streets from the L.A. County Road Dept., 108 W. 2nd St., and make a deposit with the County Engineer, 733 L.A. County Engineering Building, sufficient to cover the cost of construction inspection and record plans.

Approval of this plan by the County of Los Angeles does not constitute a representation as to the accuracy of the location of or the existence or non-existence of any underground utility, pipe, or structure within the limits of this project. This note applies to all sheets.

If work is to be done in a State Highway, a permit must be obtained from the State of California, Division of Highways, 120 South Spring Street.

COUNTY OF LOS ANGELES, CALIFORNIA

Approved, William J. Fox, County Engineer  
Sanitation Engineer

Approved, A. M. Rawn  
CHIEF ENGR. CO. SAN. DIST. NO. 20  
Office Engineer

By A. P. Collins  
Sanitation Engineer

By D. P. Williams  
Office Engineer

Checked By: R. E. Kuhns 1-10-55  
Office of County Engineer, Reg. C. E. No. 7860

R.E.





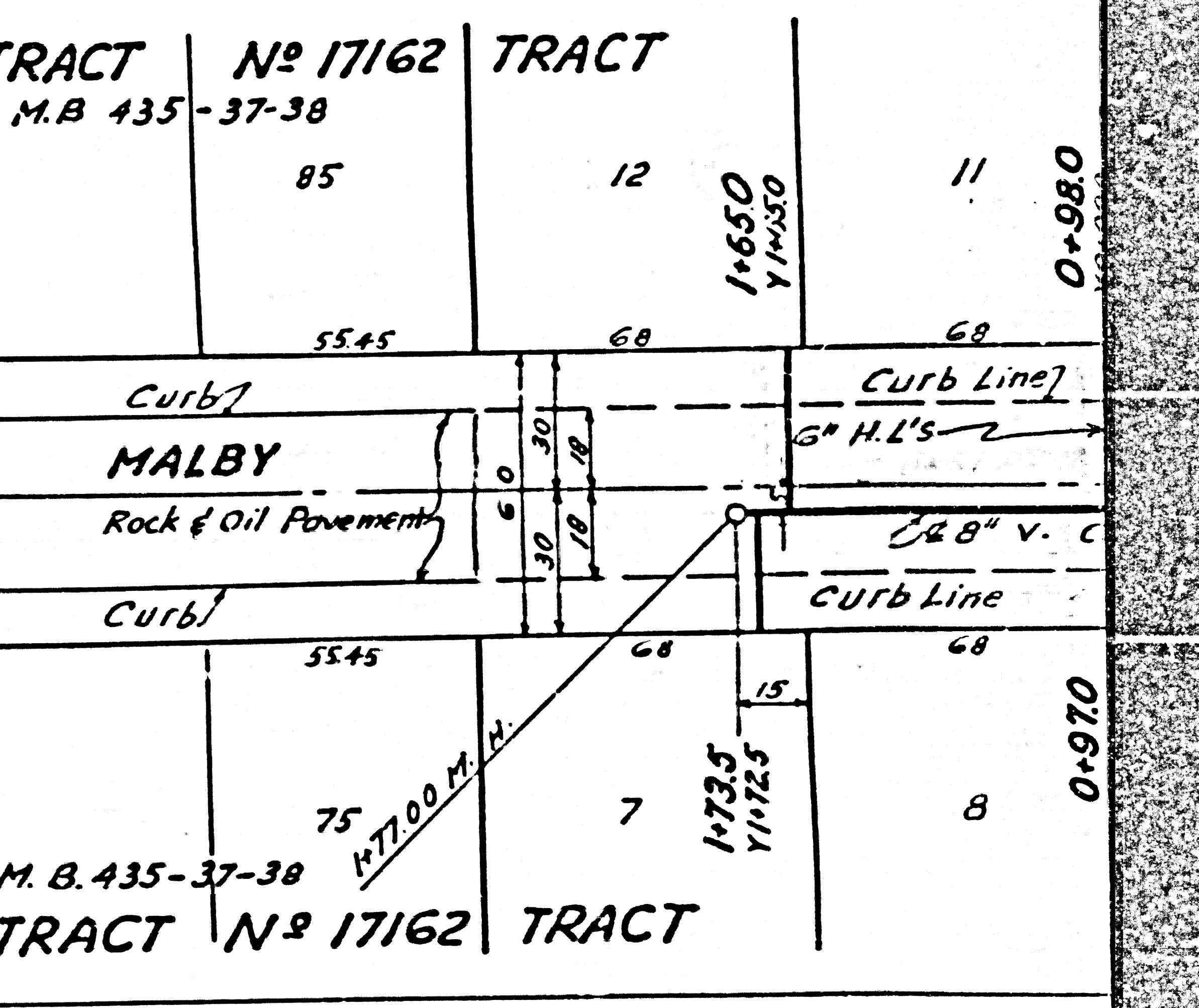
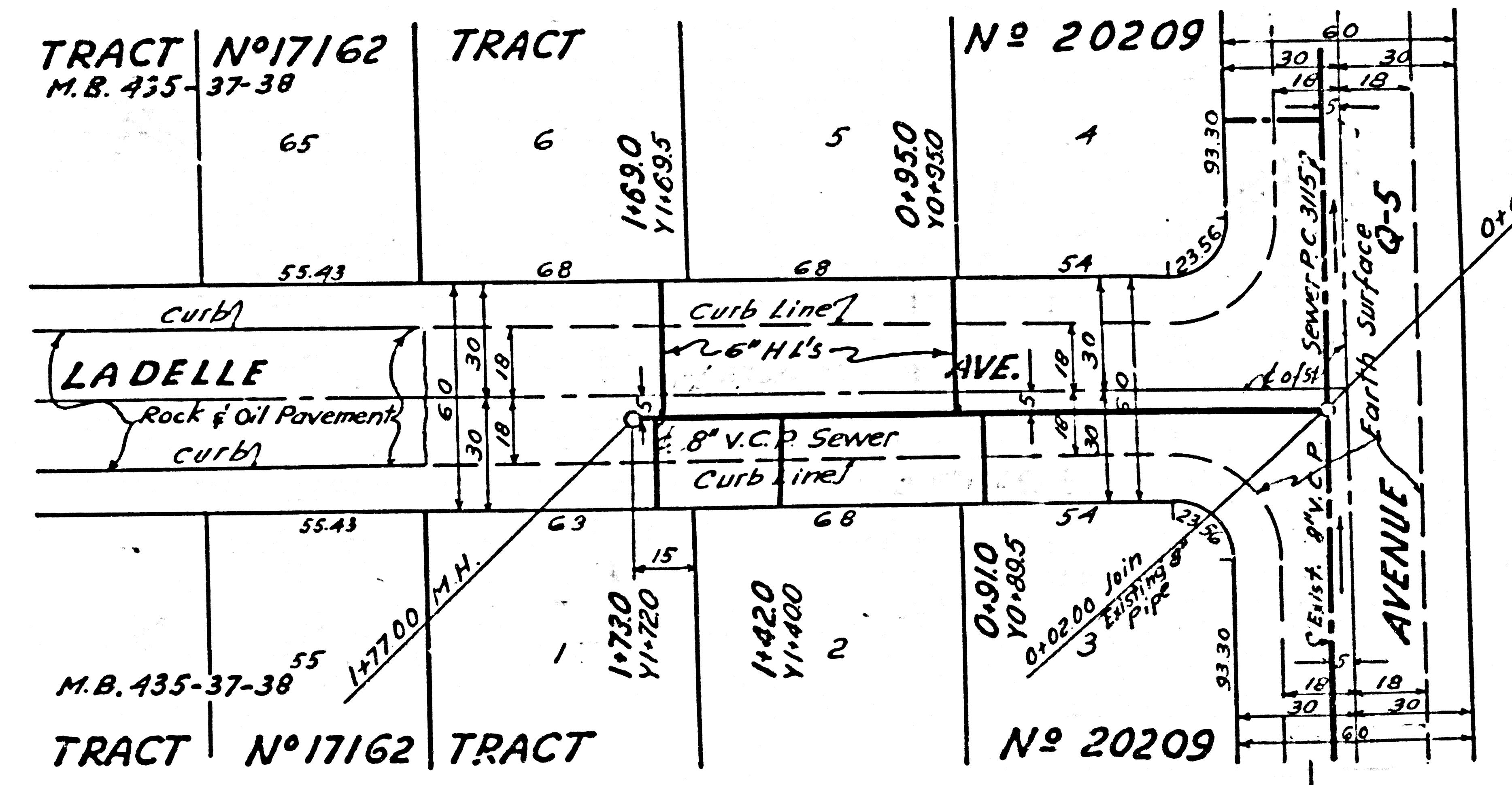
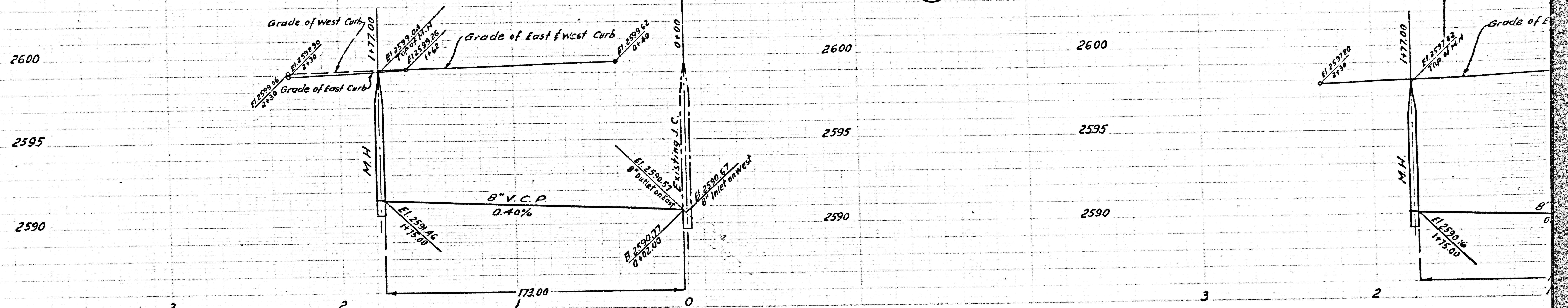


Trim Line

(B)

(B)

(A)



Trim Line