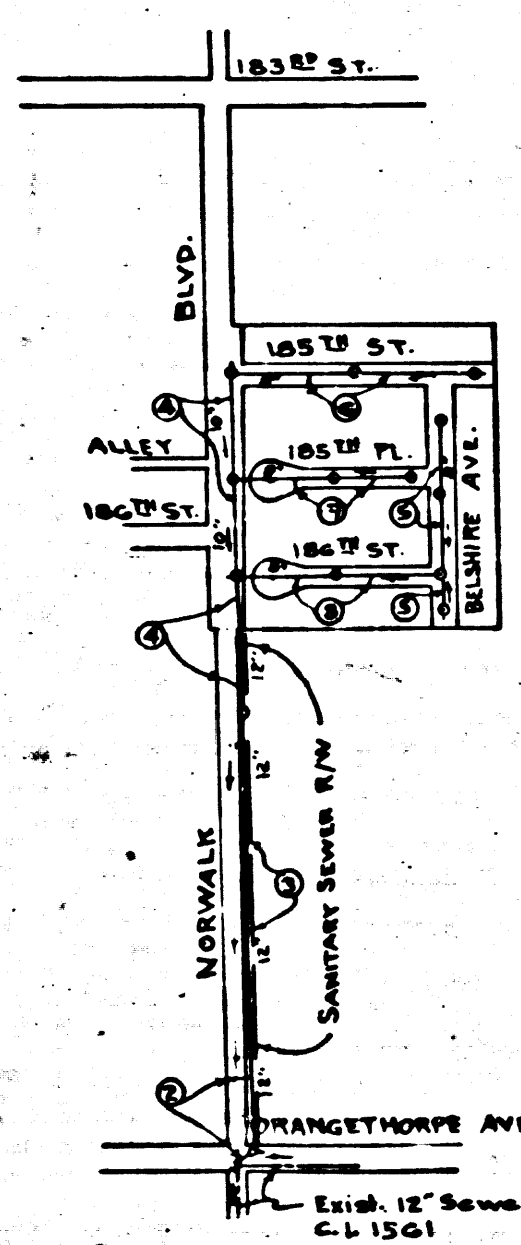


B.M. Rd. Dept. 5Y14GG Elev. 47.921
 Norwalk Blvd. & 186th St. - S.W. Corner.
 Spike in Lead in E. edge cone. walk to
 house N° 12156 E. 186th St.

BELLFLOWER BLDG. DIST. N° 4

- NOTE:**
 Provide stakes on the property lines or property lines produced at right angles to the sewer line at the center line of each manhole.
 No representative of the County Engineer will survey or layout any portion of the work.
 The owner or his authorized representative shall furnish the County Engineer with grade sheets and stations for all house laterals and Y branches and shall provide stakes for them at their proper locations with stationing plainly marked. Any change in location shall be requested in writing by the owner or his representative.
 No revisions shall be made in these plans without the approval of the County Engineer.
1. Use standard manhole frames and covers, S-a-117.
 2. Use standard strength pipe except as noted.
 3. Use joint compound for all vitrified clay pipe joints per spec's. sec. 31, except as noted.
 4. Resurface all trench within paved area to meet L. A. County Road Dept. or California State Highway Dept. requirements in accordance with permit.
 5. Encase four feet of sewer at points of interference with poles, S-a-119.
 6. House laterals to be constructed with inverts at property line 5 feet below curb grade except as noted.
 7. All structures shall be brick sewer structures, S-a-104.
 8. For allowable leakage test, use Formula No. 2, Spec's, Sec. 51.
 9. Manhole tops in unimproved Right-Of-Way to be 4" above finish grade.

SHEET	PAGES
1	1-4
2	5-8



INDEX MAP
 SCALE: 1"=100'
 TRACT N° 18605
 P.C. 3338

No CHARGE FOR CONNECTIONS
Letter 2-16-55

PROFILE, ALIGNMENT AND GRADE OF
SANITARY SEWERS
 TO BE CONSTRUCTED IN

P.C. 3338
 PAGE 1

TRACT N° 18605

20,494

PRIVATE CONTRACT NO. 3338
 W. S. 33
 2 SHEETS

Scale: VERT. 1"=4'
 HORIZ. 1"=40' JAN. 1955
 PREPARED IN THE OFFICES OF
VALLEY ENGINEERING CO.

James L. Manning Reg. C. E. No. 7676

FOR LEGEND SEE PLAN NO. S-a-64

NOTE:
 Grades to which this improvement is to be constructed are shown on plans and profiles. Grade points for top of curbs, center line of streets, or center line of alleys are shown by circles on profiles. At all points between designated points the grade shall be established so as to conform to a straight line drawn between said designated points.
 Elevations are in feet above U.S.C.S. datum or mean sea level.
 This drawing and the data hereon are hereby made a part of the specifications.
 Work shall be constructed according to specifications on file in the office of the County Engineer and shall be prosecuted only in the presence of the County Engineer.
 Before work can be started, the contractor must obtain a permit to excavate in County streets from the L.A. County Road Dept., 108 W. 2nd St. and make a deposit with the County Engineer, 733 L.A. County Engineering Building, sufficient to cover the cost of construction inspection and record plans.
 Approval of this plan by the County of Los Angeles does not constitute a representation as to the accuracy of the location of or the existence or non-existence of any underground utility, pipe, or structure within the limits of this project. This note applies to all sheets.
 If work is to be done in a State Highway, a permit must be obtained from the State of California, Division of Highways, 170 South Spring Street.

COUNTY OF LOS ANGELES, CALIFORNIA
 Approved, William J. Fox, County Engineer
 Approved, A. M. Ravn, CHIEF ENGINEER, SAN DIST. NO. 19
 Checked By: *P. H. ...* 2-16-55
 Office of County Engineer, Reg. C. E. No. 7860.

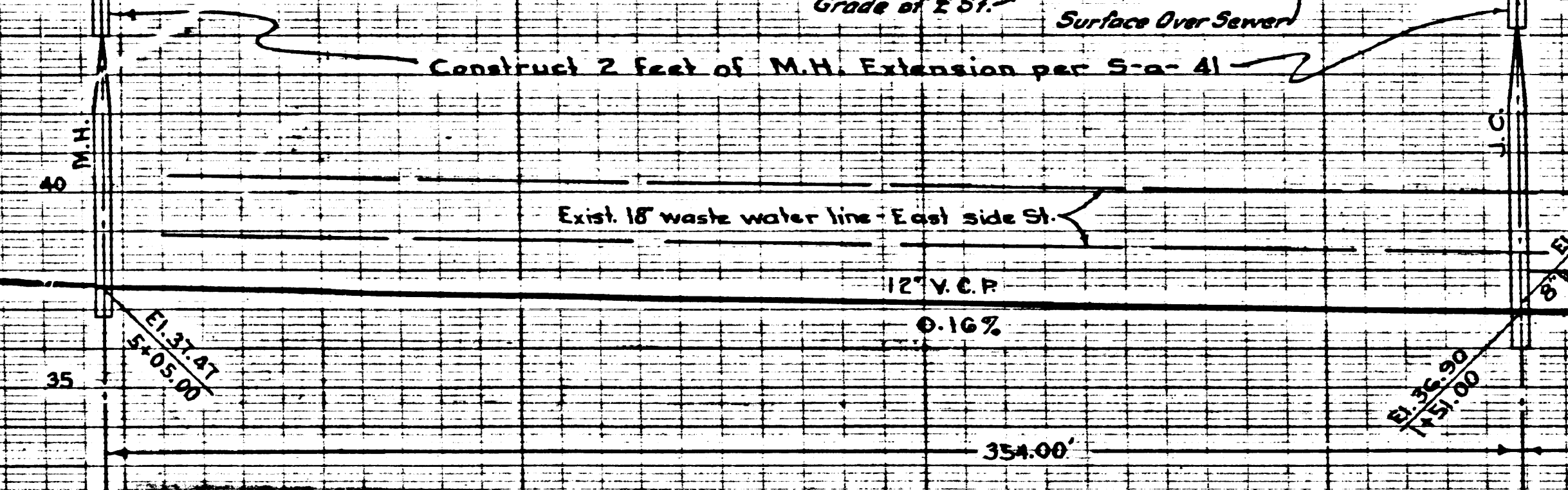
deduct 5-26-55 Williams

Trim Line

C. 3338
PAGE 3

20,496

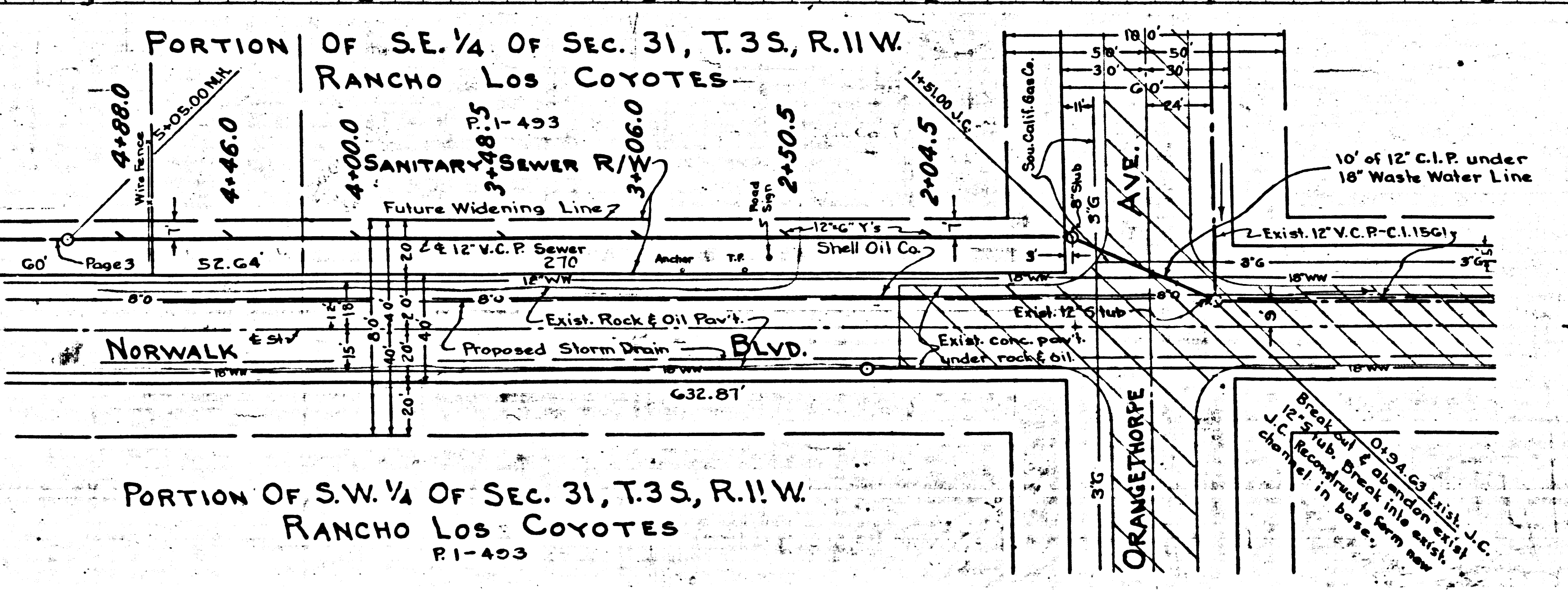
Use Metal Gaskets And Forms With Cement Mortar As A Jointing Material For All Vitrified Clay Pipe Joints per Spec's. Secs 32 & 33.
FROM STA. 1+51.00 TO 5+05.00 USE SEALITE INC. JOINT CAULKING YARN NO. 110 TO BE FURNISHED BY MFGR. WITHOUT CHARGE AND JOINT COMPOUND PER SPEC'S SEC. 31



P.C. 3338
PAGE 2

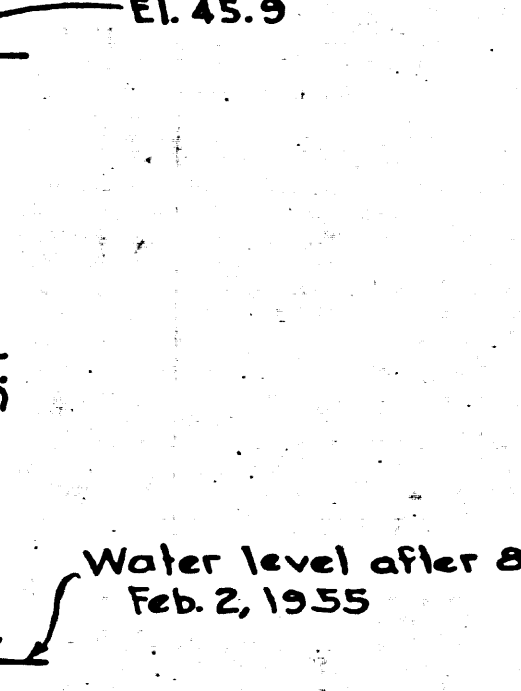
20,495

No CHARGE
FOR CONNECTIONS



PORTION OF S.W. 1/4 OF SEC. 31, T.3S, R.11W
RANCHO LOS COYOTES
R.1-403

TEST BORING
2+00 - 40' E. E. Norwalk Blvd



Water level after 8 hours
Feb. 2, 1955

113 Trim Line

PC. 3338
PAGE 4

20,497

NO CHARGE FOR CONNECTIONS

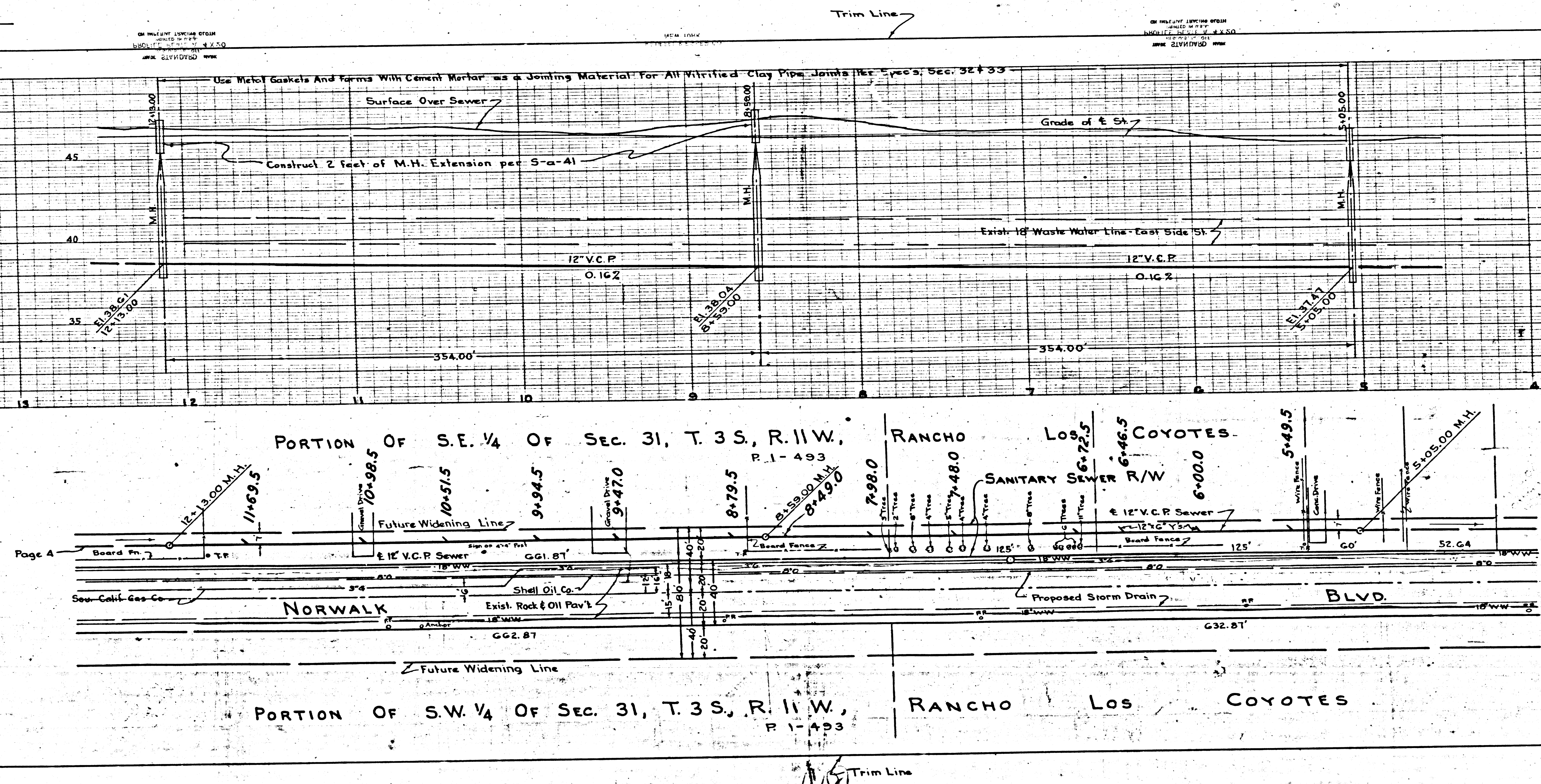
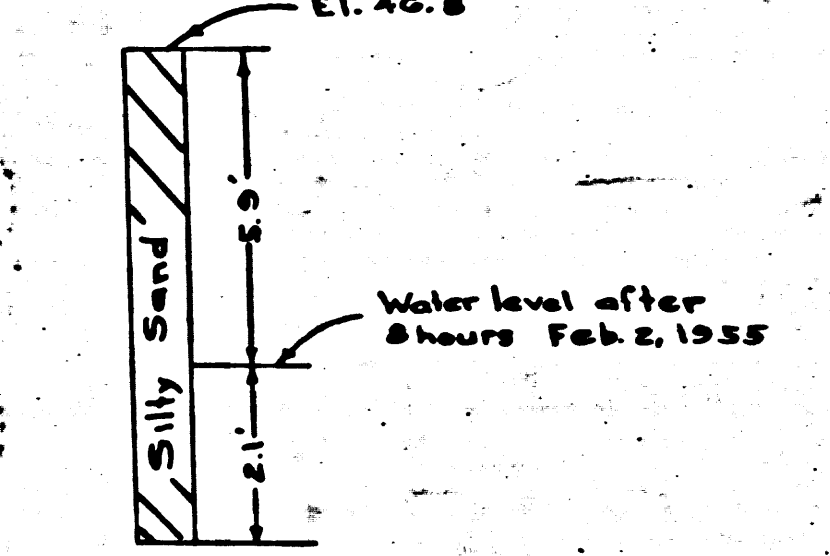
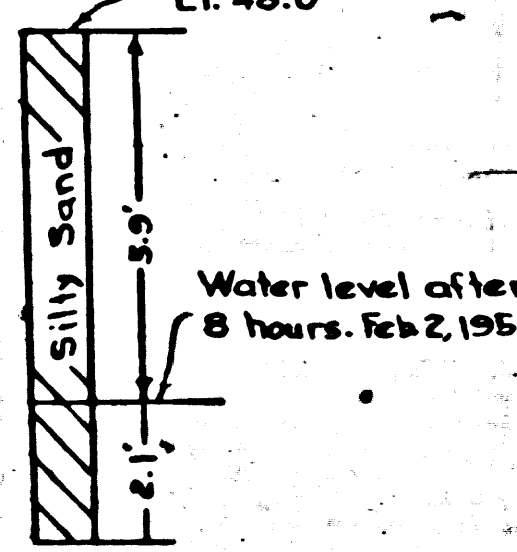
PC. 3338
PAGE 3

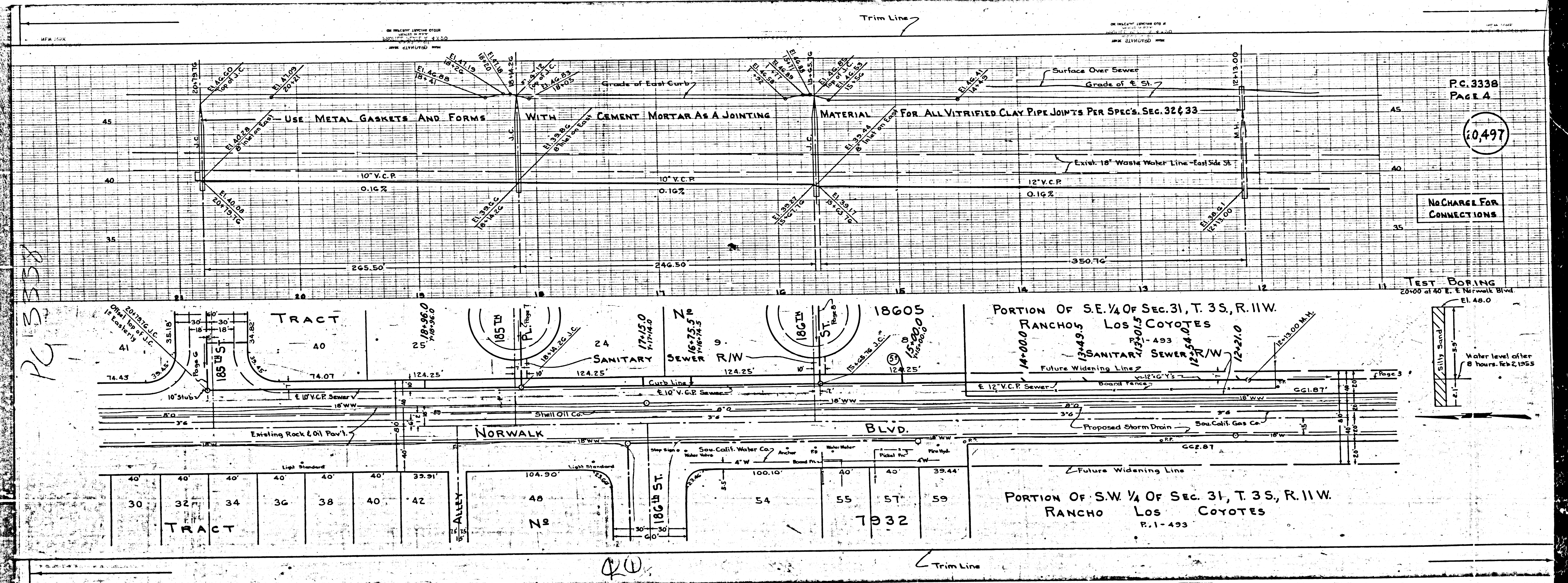
20,496

NO CHARGE FOR CONNECTIONS

TEST BORING
10+50 at 40' E. of Norwalk Blvd

TEST BORING
21+00 at 40' E. of Norwalk Blvd.
El. 48.0

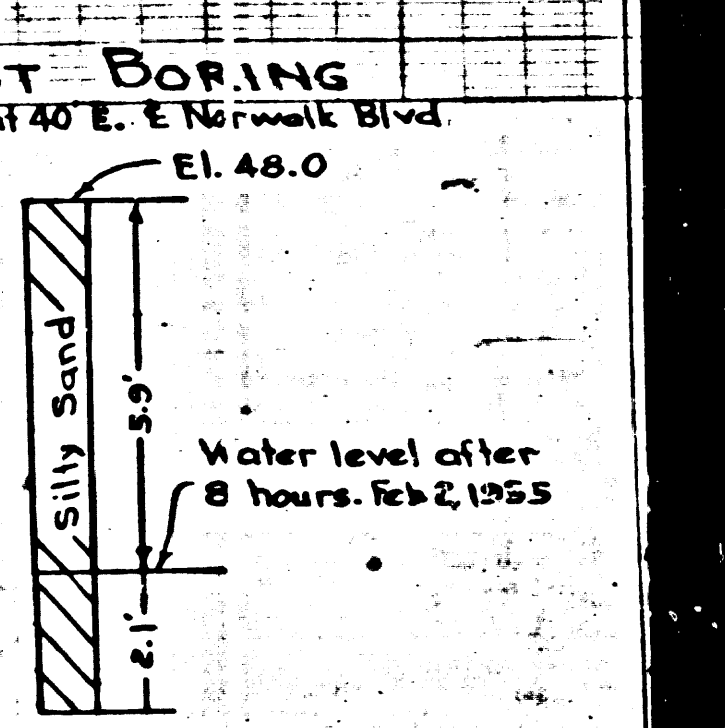




P.C. 3338
PAGE 4

20,497

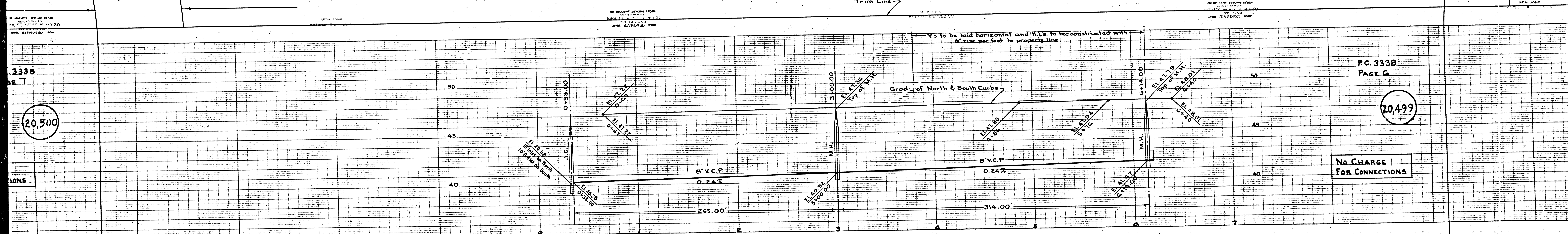
NO CHARGE FOR
CONNECTIONS



PC 3338

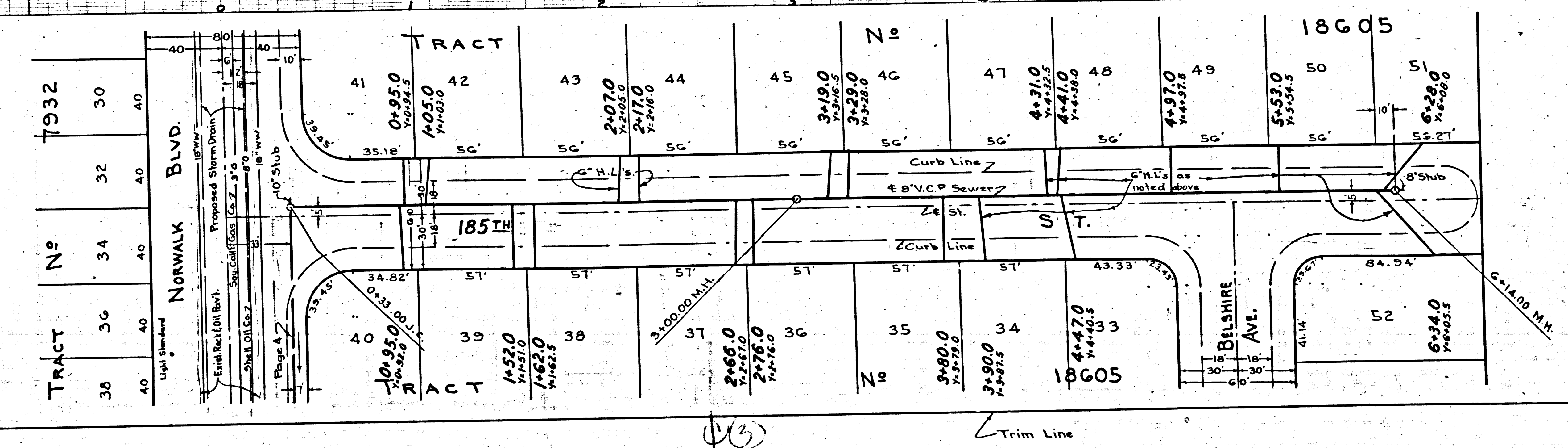
20

Trim Line



3338
S.E. 7
20,500

PC.3338
PAGE 6
20,499
NO CHARGE
FOR CONNECTIONS



TRACT	N ^o	T ^o
38	40	40
39	40	40
40	40	40
41	40	40
42	40	40
43	40	40
44	40	40
45	40	40
46	40	40
47	40	40
48	40	40
49	40	40
50	40	40
51	40	40

3

P.C. 3338
PAGE 8

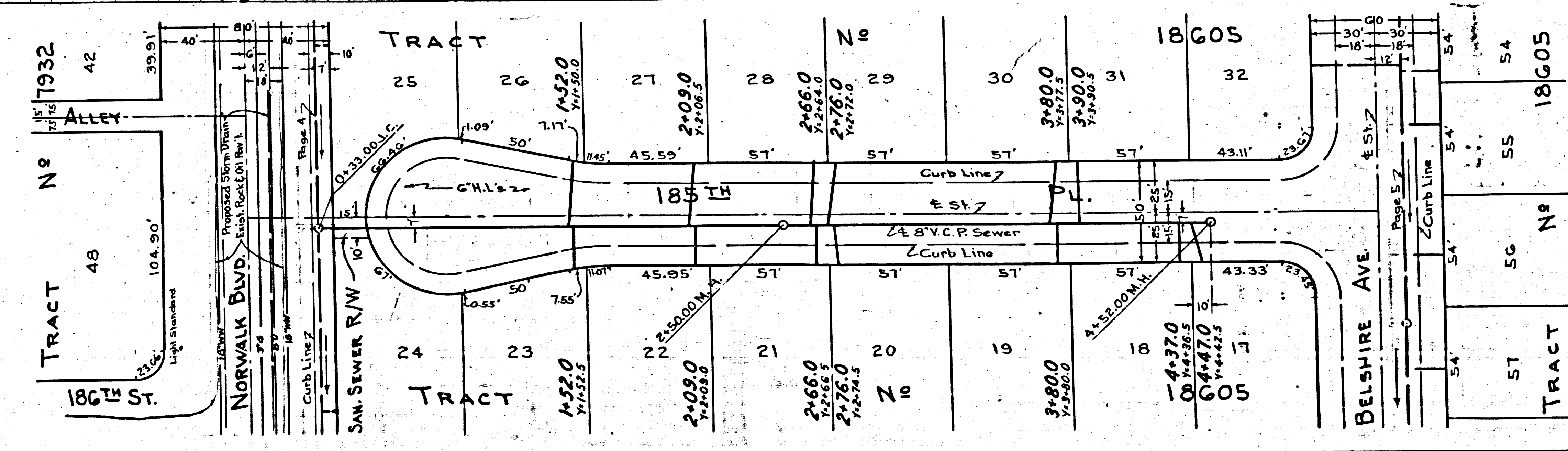
20,501

NO CHARGE
FOR CONNECTIONS

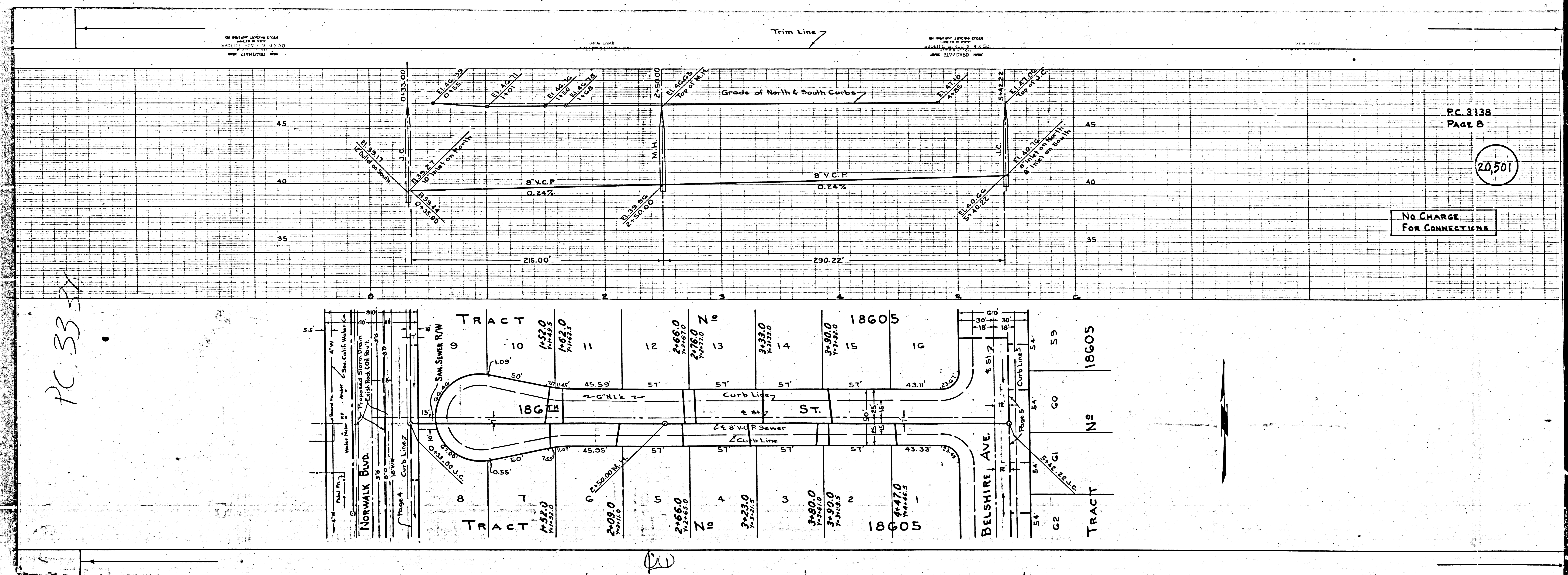
P.C. 3338
PAGE 7

20,500

NO CHARGE
FOR CONNECTIONS



PC 3331



PC 3138
PAGE B

20,501

No Charge
For Connections