

INDEX MAP  
TRACT No 18692  
P.C. 3341  
SCALE: P=300'

BM S.K. 1153, 1952 C.S. Monument 13 East of intersection of Stamy Road, (Running North) and Leffingwell Road, 3' South of Leffingwell Road.  
ELEV. 225.487

**NOTE: WHITTIER BLDG. DIST. No II.**

Provide stakes on the property lines or property lines produced at right angles to the sewer line at the center line of each manhole.

No representative of the County Engineer will survey or layout any portion of the work.

The owner or his authorized representative shall furnish the County Engineer with grade sheets and stations for all house laterals and Y branches and shall provide stakes for them at their proper locations with stationing plainly marked. Any change in location shall be requested in writing by the owner or his representative.

No revisions shall be made in these plans without the approval of the County Engineer.

1. Use standard manhole frames and covers, S-a-117, EXCEPT AS NOTED.
2. Use standard strength pipe except as noted.
3. Use cement mortar for all vitrified clay pipe joints.
4. Resurface all trench within paved area to meet L.A. County Road Dept. or California State Highway Dept. requirements in accordance with permit.
5. Encase four feet of sewer at points of interference with poles, S-a-119.
6. House laterals to be constructed with inverts at property line 6 feet below curb grade except as noted.
7. All structures shall be brick sewer structures, S-a-104, EXCEPT AS NOTED.
8. For allowable leakage test, use Formula No. 1, Spec's., Sec. 51.
9. Manhole tops in unimproved Rights-Of-Way to be 6" above finish grade.

SHEET No	PAGES
1	1 - 5
2	6 - 9
3	10 - 14

NO CHARGE FOR CONNECTIONS  
*L. C. 2-16-55*

REVISION:  
Page 5 - Revise Stationing  
Approved: *S.K. Onda* Date: 2-25-55  
Office of County Engineer - Reg. C.E. 9406

REVISION:  
Page 6 & Page 7 - Curb grades & Sewer grades revised.  
Approved: *P. J. ...* Date: 4-13-55  
Office of County Engineer - Reg. C.E. 7860

checked 7-11-55 *M. ...*

PROFILE, ALIGNMENT AND GRADE OF  
**SANITARY SEWERS**  
TO BE CONSTRUCTED IN  
**TRACT No 18692**

PAGE 1  
P.C. 3341  
DOUBLE SCALE

20,812

PRIVATE CONTRACT NO. 3341  
W. S. 34  
SHEETS 3  
Scale: VERT. 1"=6'  
HORIZ. 1"=40'  
January 1955  
PREPARED IN THE OFFICES OF  
**KEMMERER ENGR. CO., INC.**

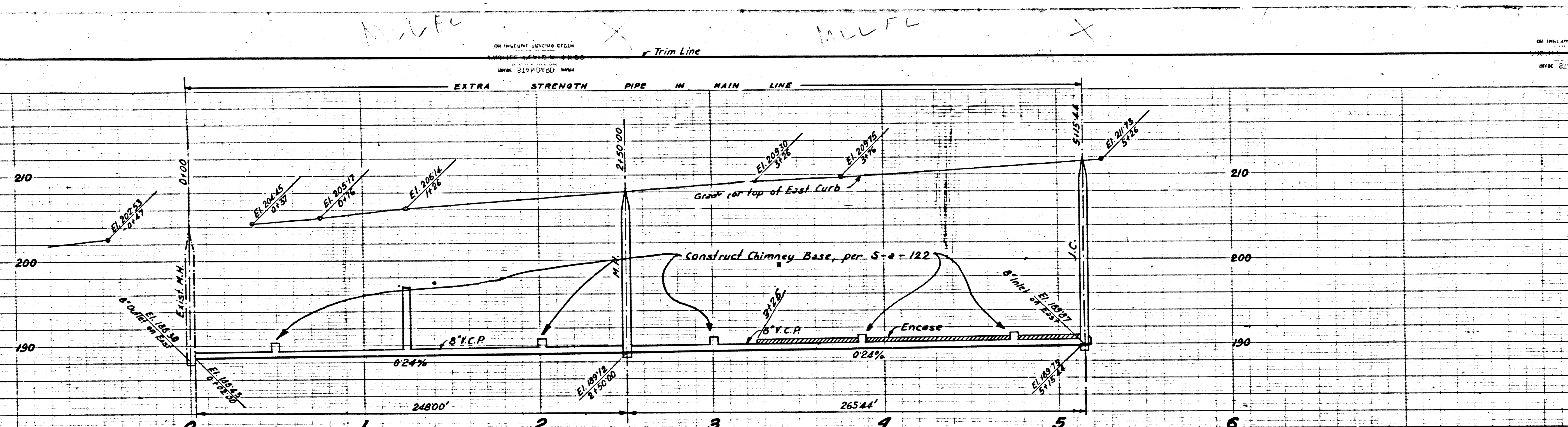
*Wm. C. ...*  
Reg. C. E. No. 2844

FOR LEGEND SEE PLAN NO. S-a-64

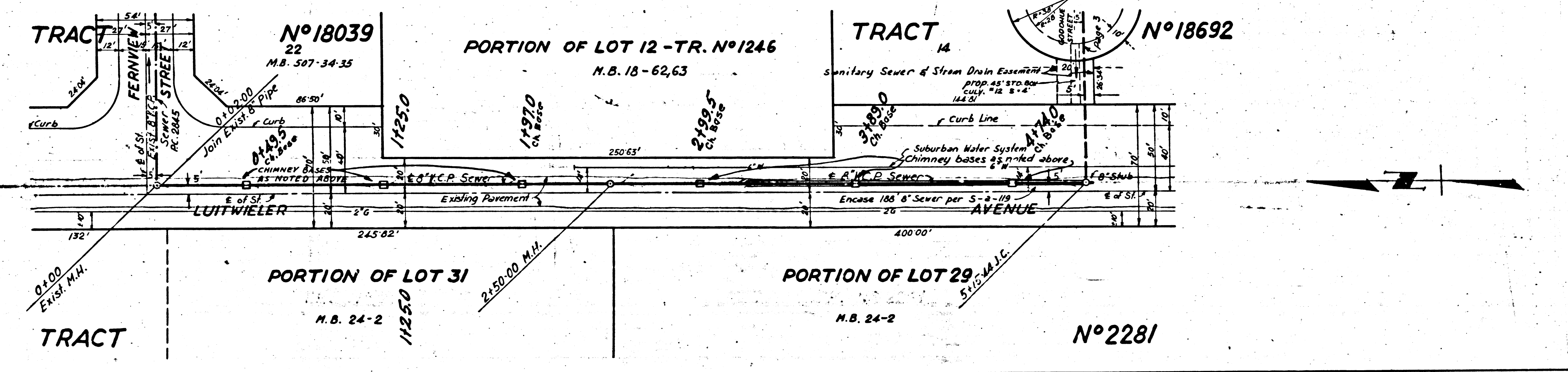
**NOTE:**  
Grades to which this improvement is to be constructed are shown on plans and profiles. Grade points for top of curbs, center line of streets, or center line of alleys are shown by circles on profiles. At all points between designated points the grade shall be established so as to conform to a straight line drawn between said designated points.  
Elevations are in feet above U.S.G.S. datum or mean sea level.  
This drawing and the data hereon are hereby made a part of the specifications.  
Work shall be constructed according to specifications on file in the office of the County Engineer and shall be prosecuted only in the presence of the County Engineer.  
Before work can be started, the contractor must obtain a permit to excavate in County streets from the L.A. County Road Dept., 108 W. 2nd St. and make a deposit with the County Engineer, 733 L.A. County Engineering Building, sufficient to cover the cost of construction inspection and record plans.  
Approval of this plan by the County of Los Angeles does not constitute a representation as to the accuracy of the location of or the existence or non-existence of any underground utility, pipe, or structure within the limits of this project. This note applies to all sheets.  
If work is to be done in a State Highway, a permit must be obtained from the State of California, Division of Highways, 120 South Spring Street.

COUNTY OF LOS ANGELES, CALIFORNIA  
Approved, William J. Fox, County Engineer  
Approved, A. M. Rawn  
CHAS. ENGR. CO. SAN. DIST. NO. 18  
*A.P. Collins*  
Sanitary Engineer  
Checked by: *P. J. ...* 2-17-55  
C. H. Co. of County Engineer, Reg. C. E. No. 7860

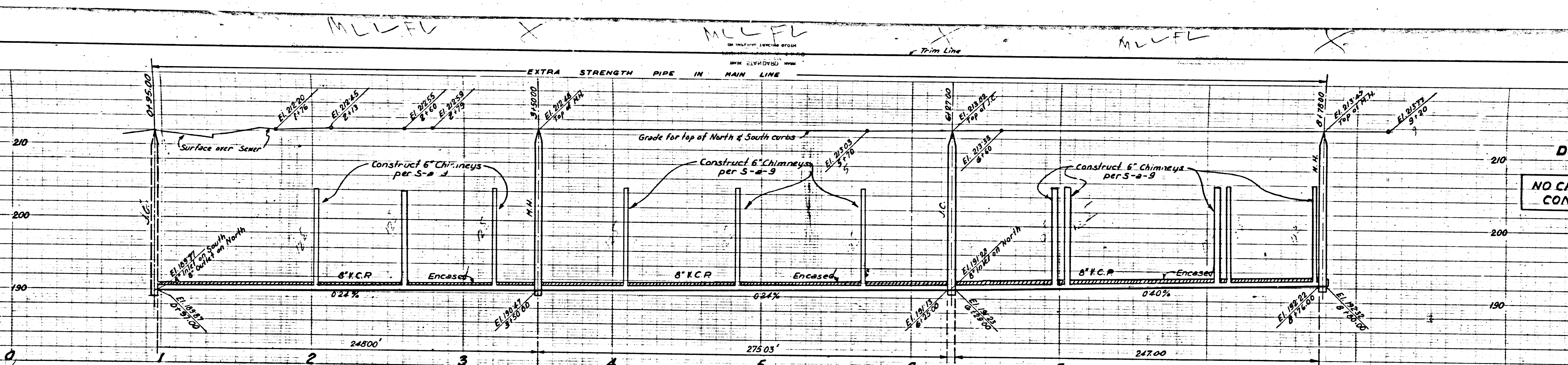
TRACT No 18692  
P.C. 3341



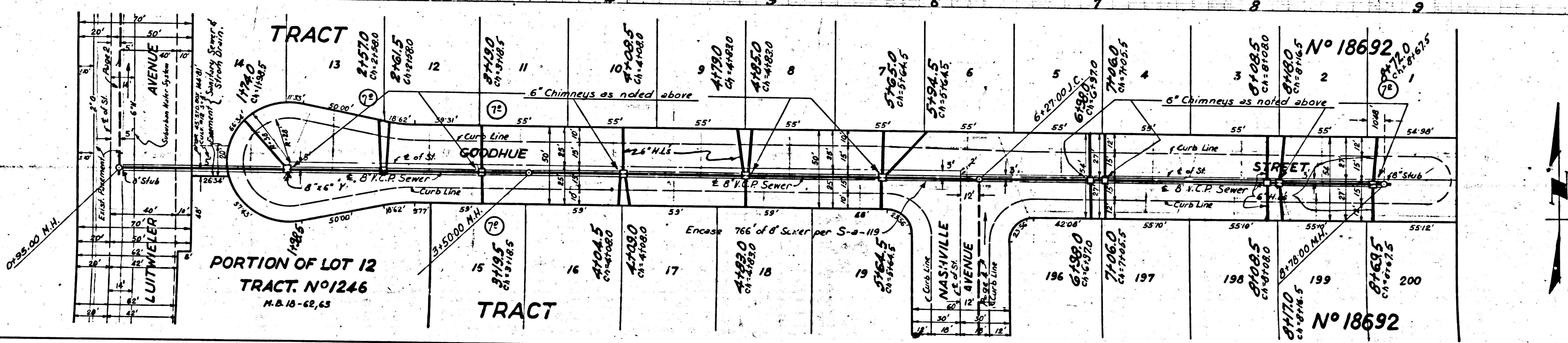
PAGE 2  
P.C. 3341  
20,813  
DOUBLE SCALE  
NO CHARGE FOR CONNECTIONS



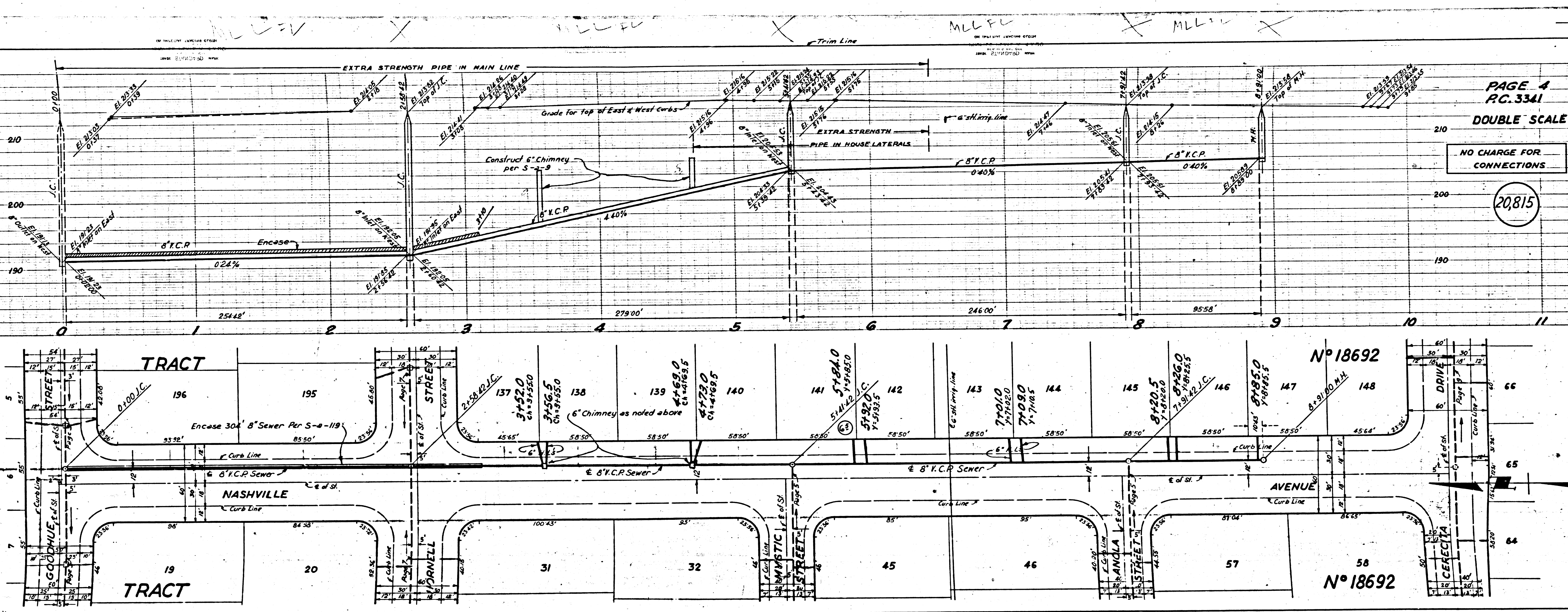
(4)



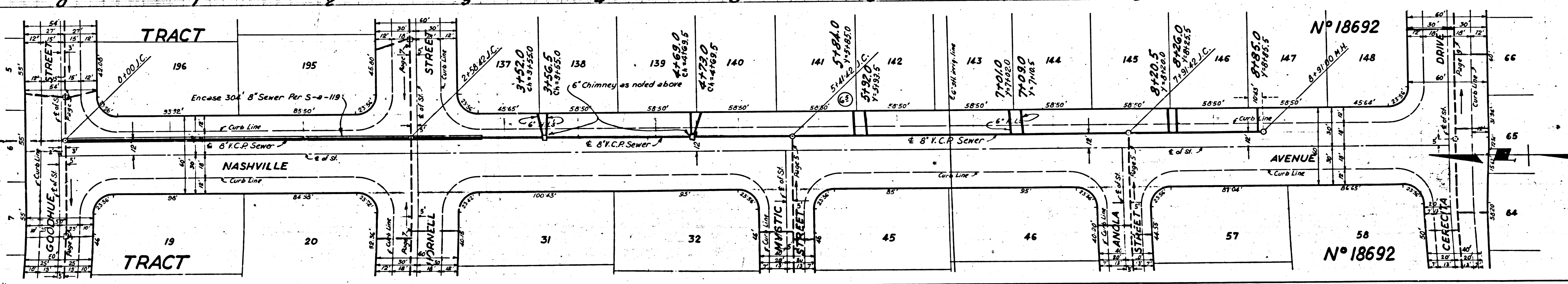
PAGE 3  
 P.C. 3341  
 DOUBLE SCALE  
 NO CHARGE FOR CONNECTIONS  
 20,814



(3)

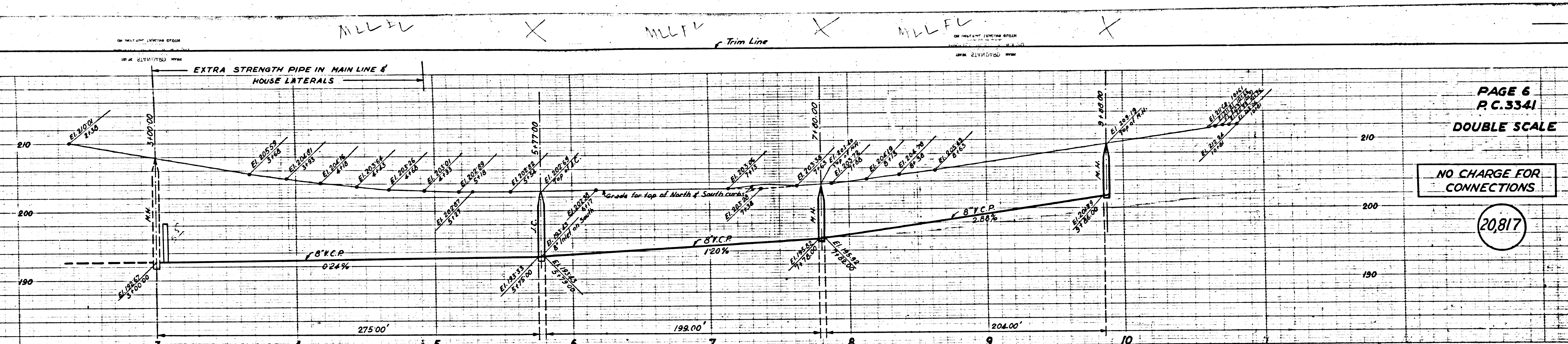


PAGE 4  
 R.C. 3341  
 DOUBLE SCALE  
 NO CHARGE FOR  
 CONNECTIONS  
 20,815

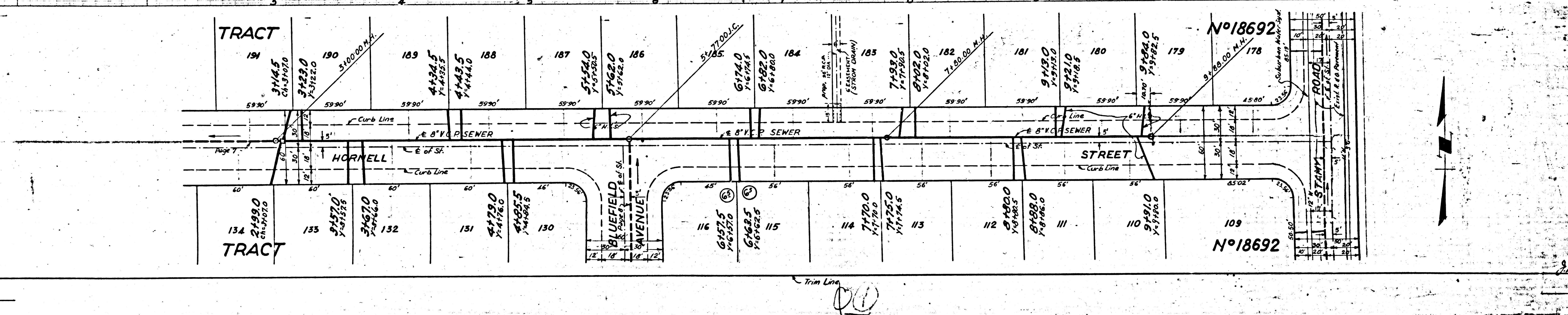


117

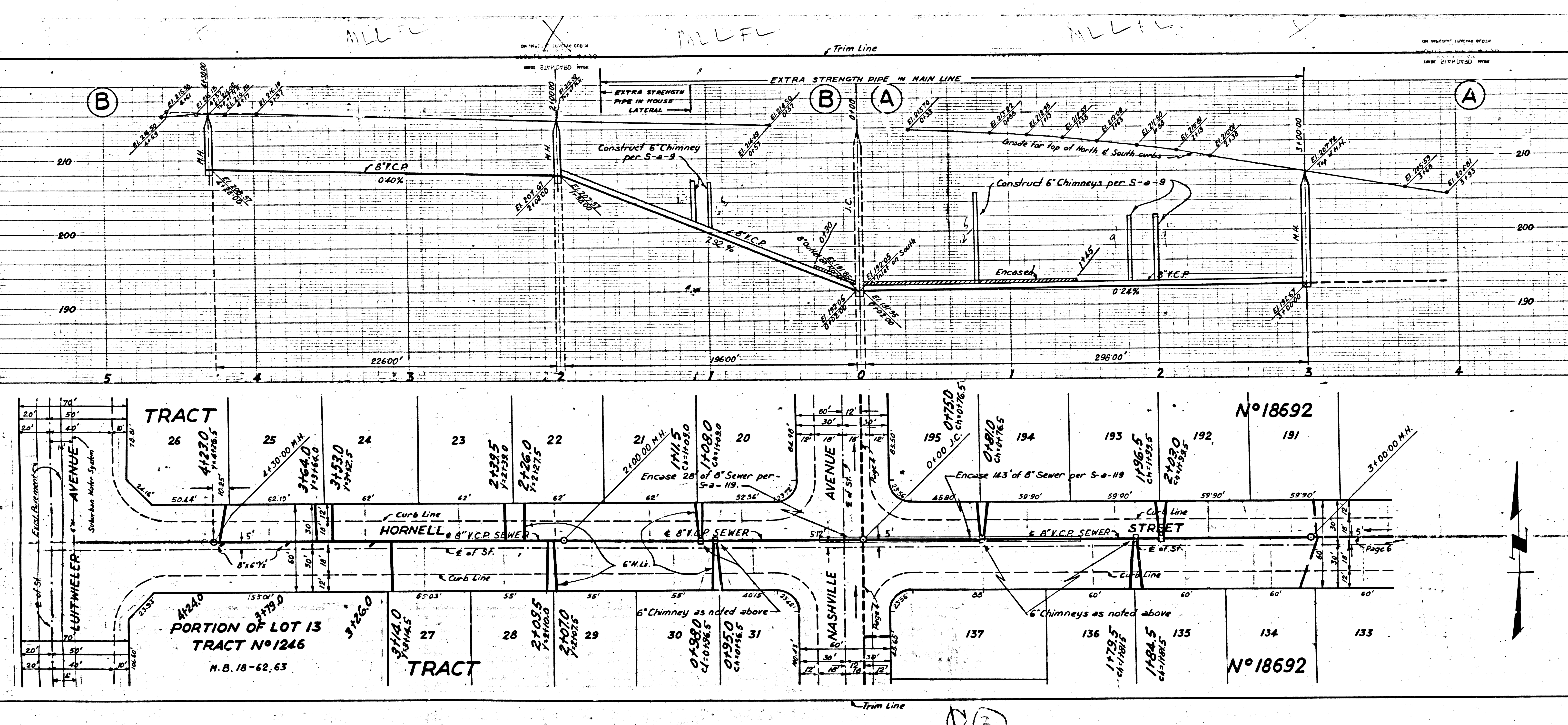




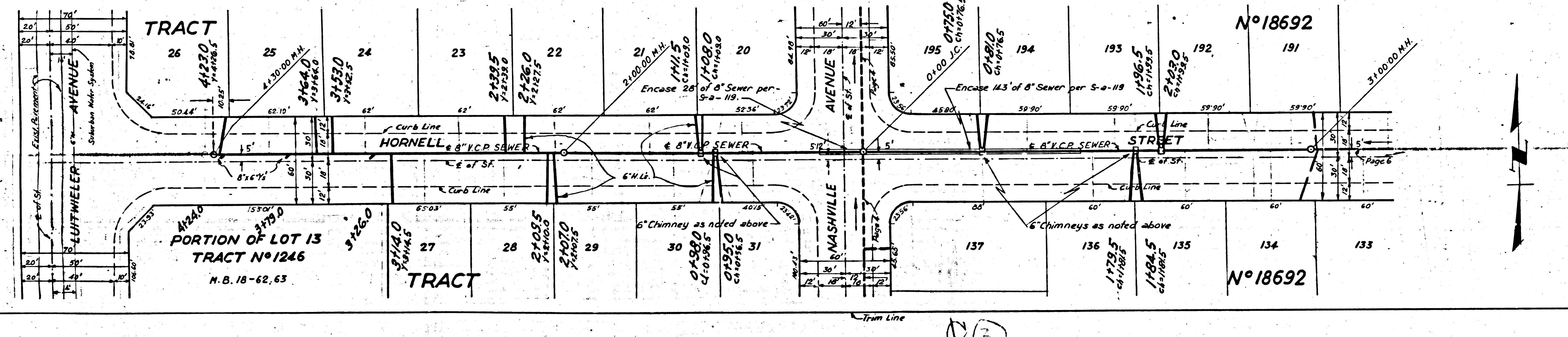
PAGE 6  
P.C. 3341  
DOUBLE SCALE  
NO CHARGE FOR CONNECTIONS  
20.817



②  
TRACT N°18692  
P.C. 3341  
⑤  
②

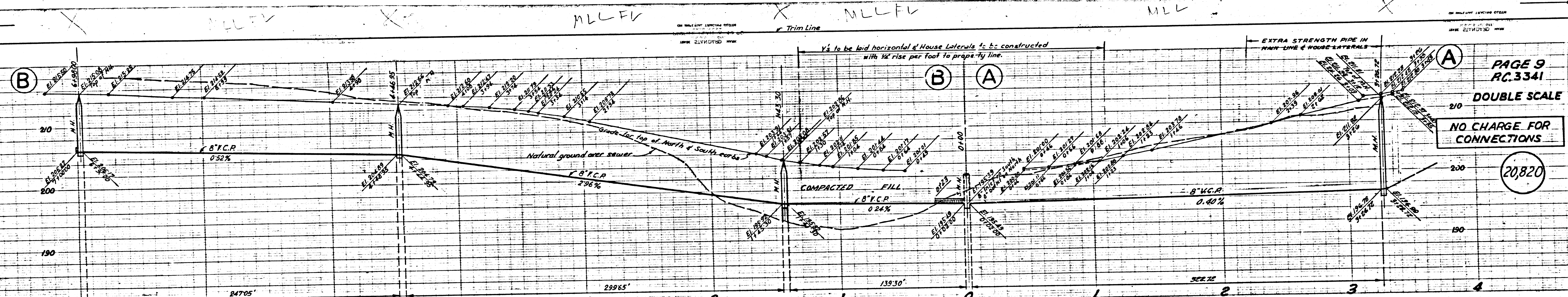


PAGE 7  
P.C. 3341  
DOUBLE SCALE  
NO CHARGE FOR CONNECTIONS  
20,818

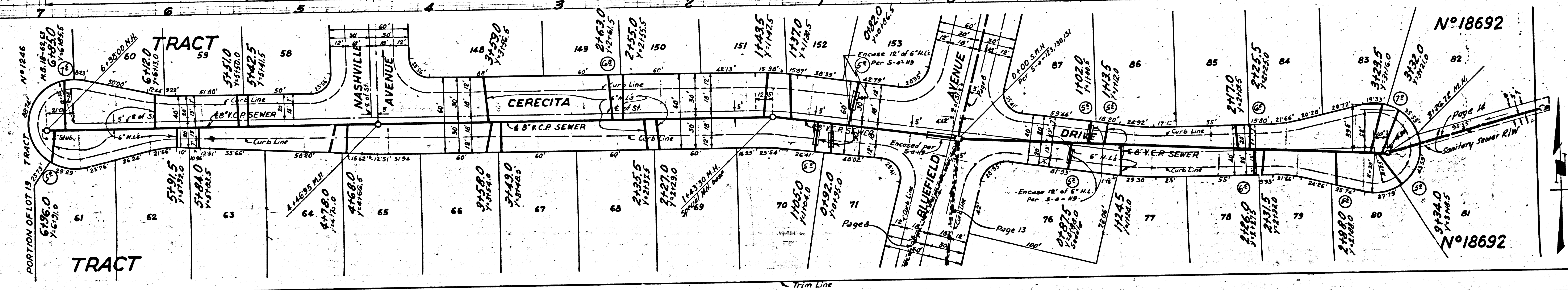






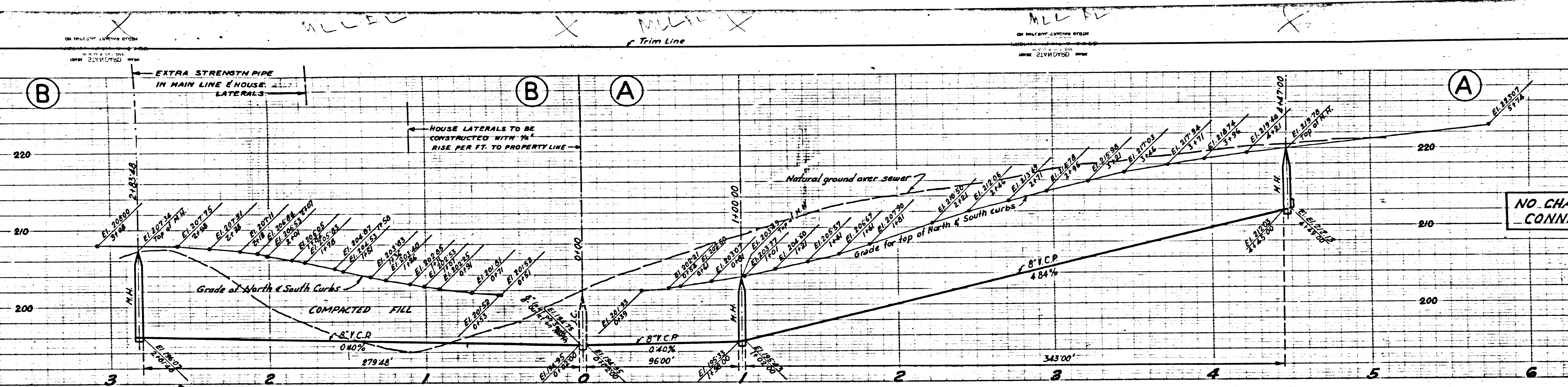


PAGE 9  
 RC.3341  
 DOUBLE SCALE  
 NO CHARGE FOR  
 CONNECTIONS  
 20820

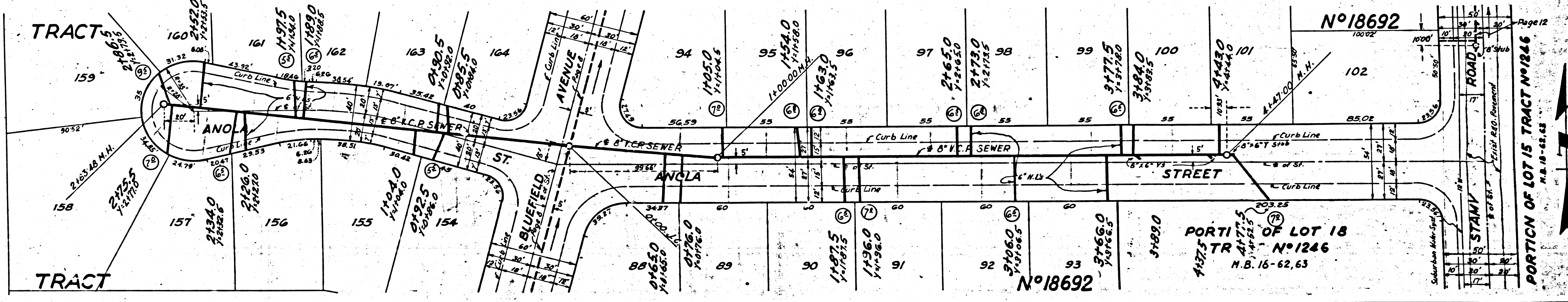


RC.3341

Trim Line  
 20

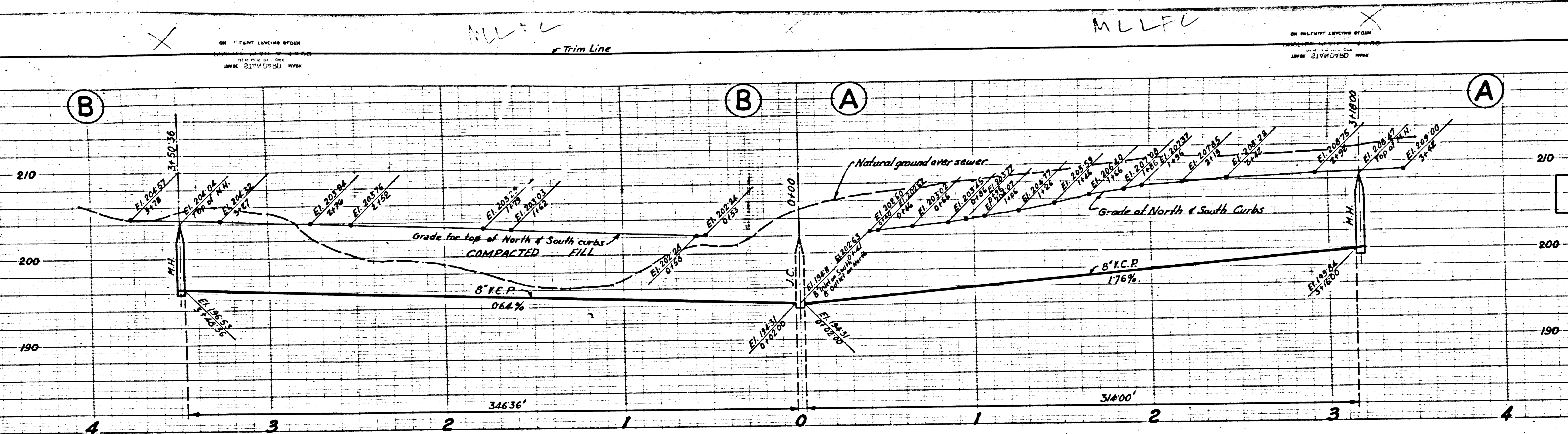


PAGE 10  
P.C. 3341  
DOUBLE SCALE  
20,821  
NO CHARGE FOR CONNECTIONS

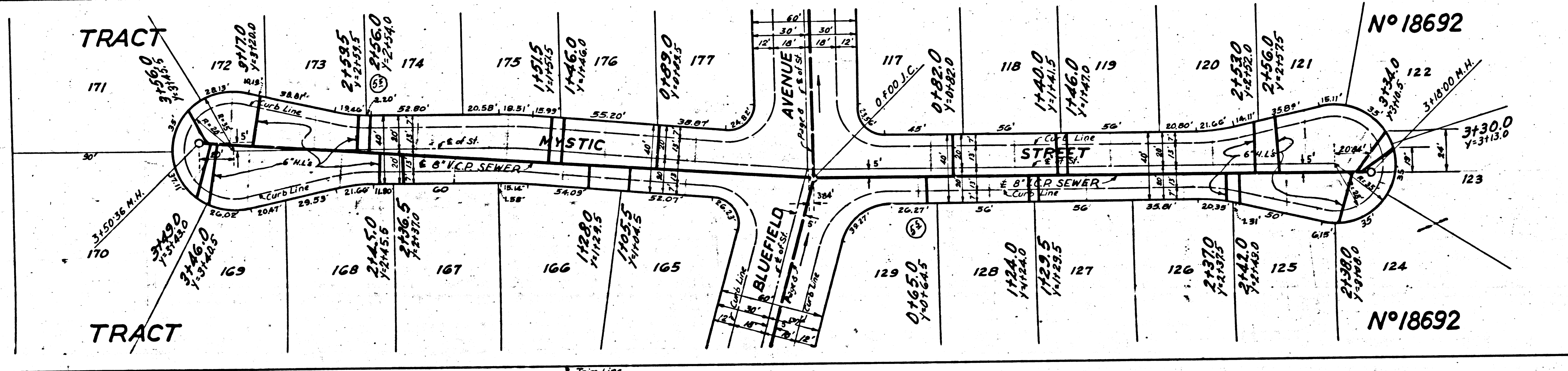


TRACT N°18692  
P.C. 3341  
3

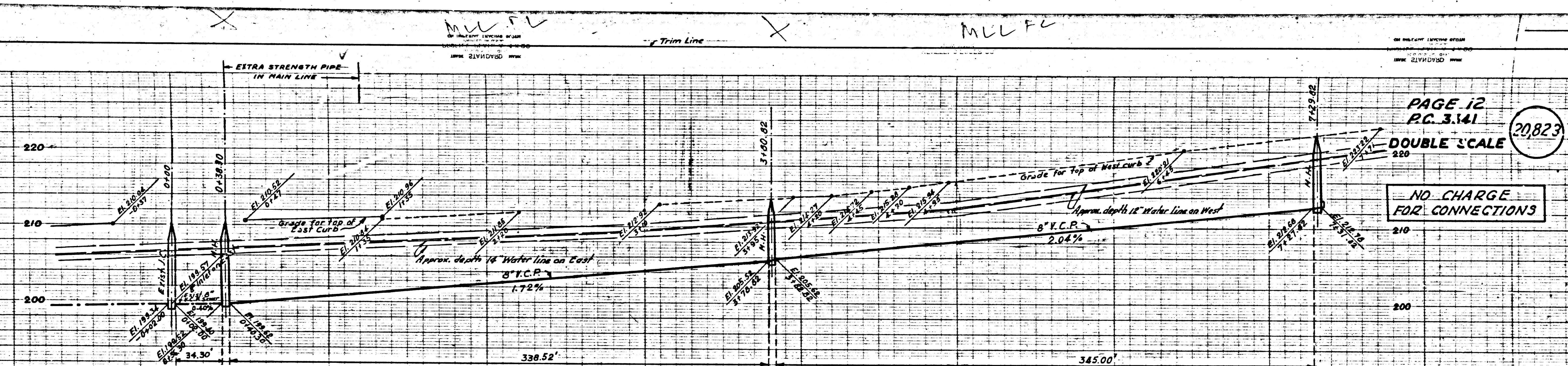
25



PAGE 11  
 P.C. 3341  
 DOUBLE SCALE  
 NO CHARGE FOR  
 CONNECTIONS  
 20822



(1)

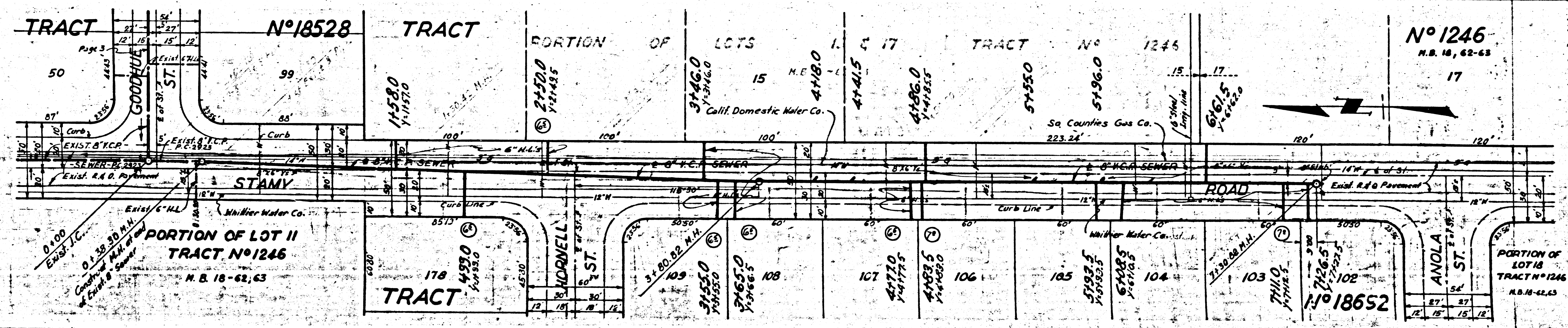


PAGE 12  
P.C. 3.141

DOUBLE SCALE

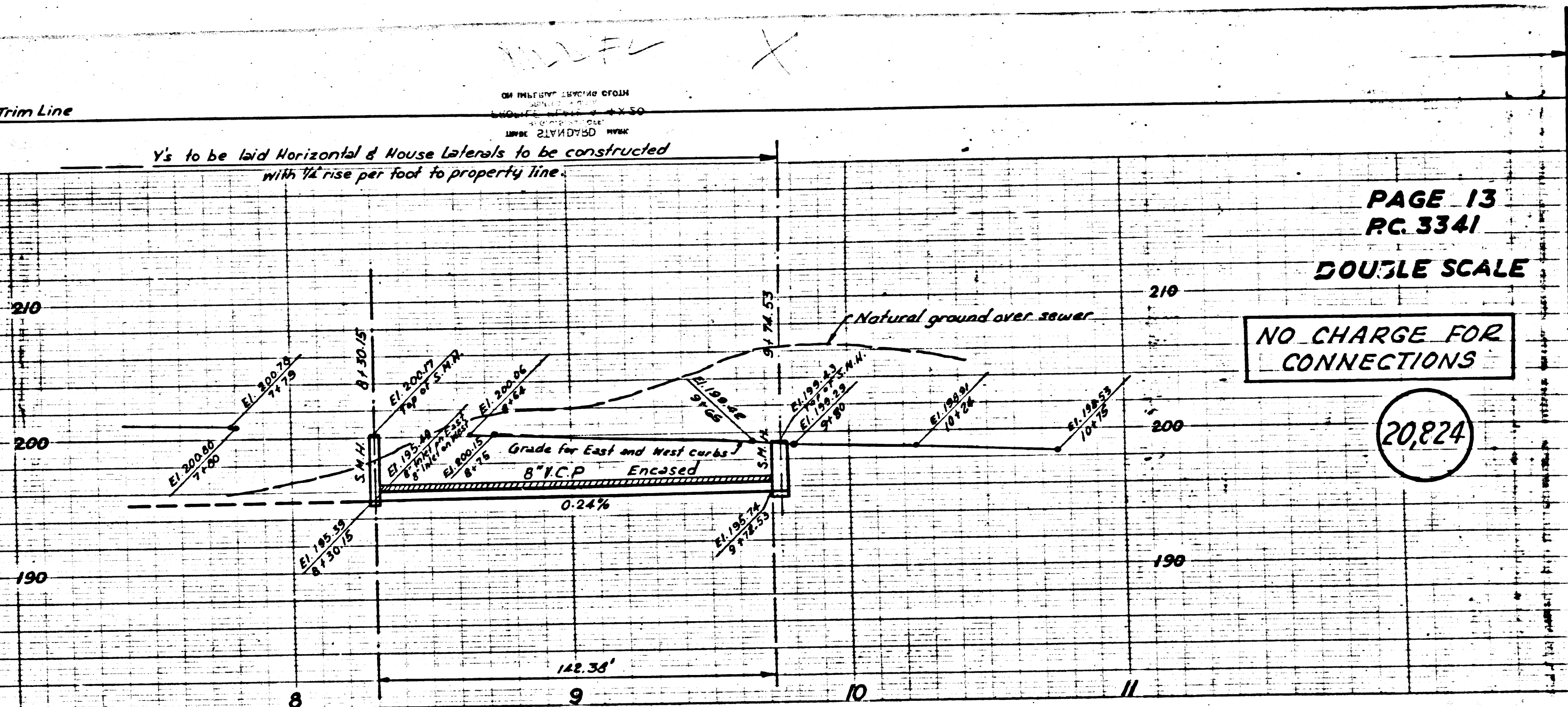
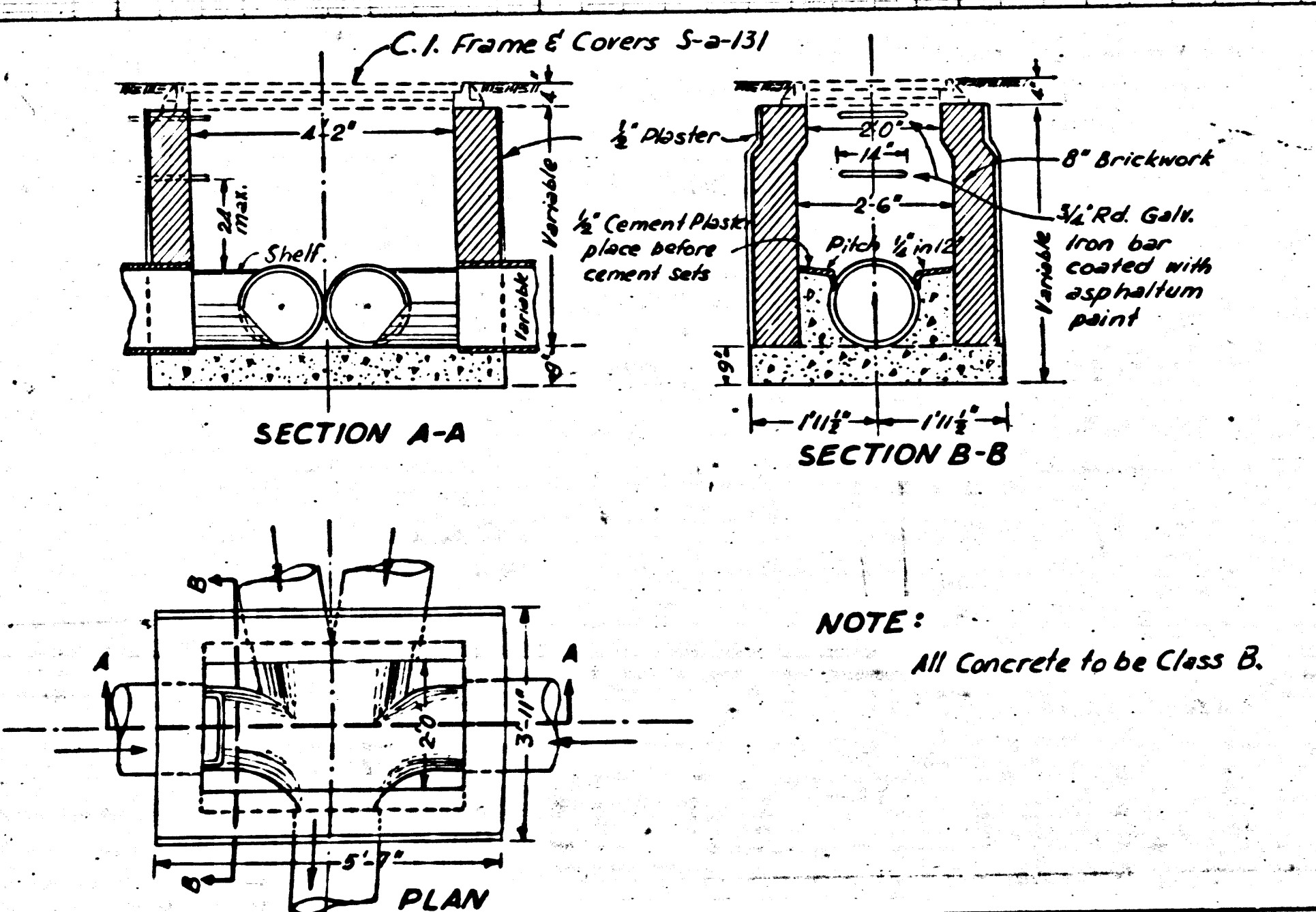
NO CHARGE  
FOR CONNECTIONS

NOTE:  
ALL UTILITY COMPANIES ARE TO BE  
NOTIFIED BEFORE STARTING CONSTRUCTION  
ON STAMY ROAD.

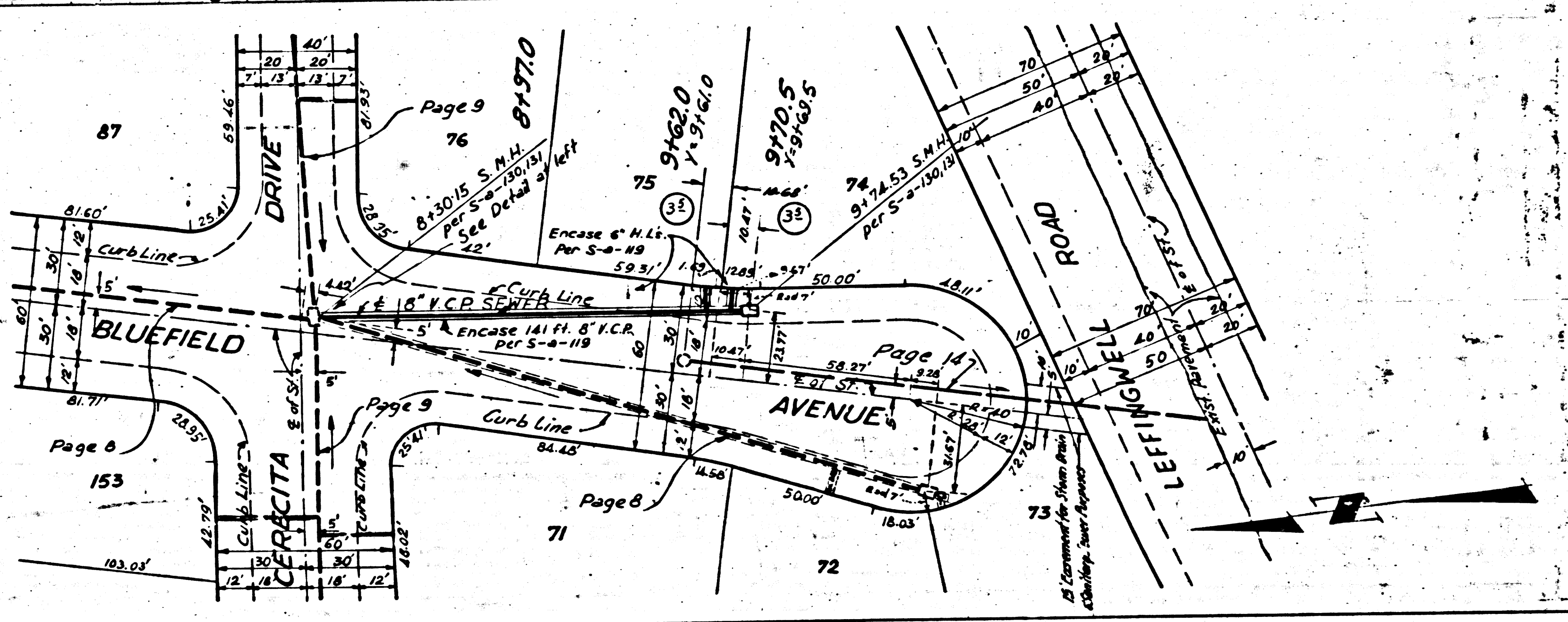


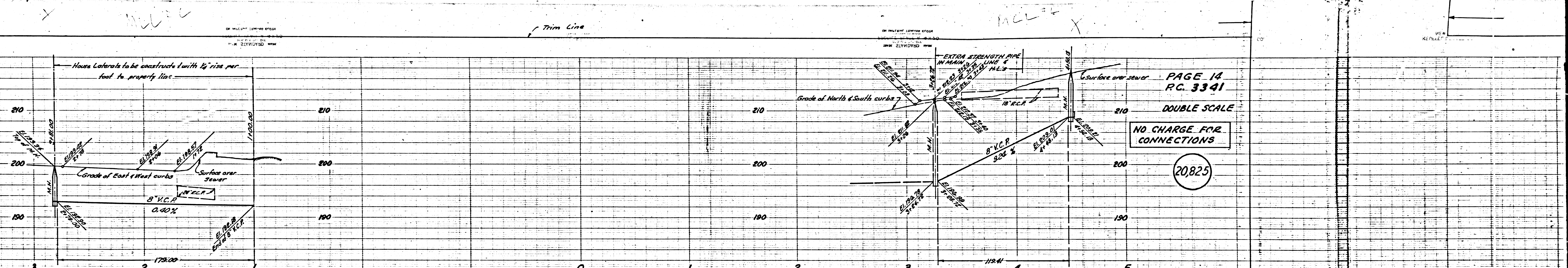
3

DETAILS OF  
**RECTANGULAR SHALLOW  
 MANHOLE**  
 FOR 3' TO 5' DEPTHS  
 NO. SCALE

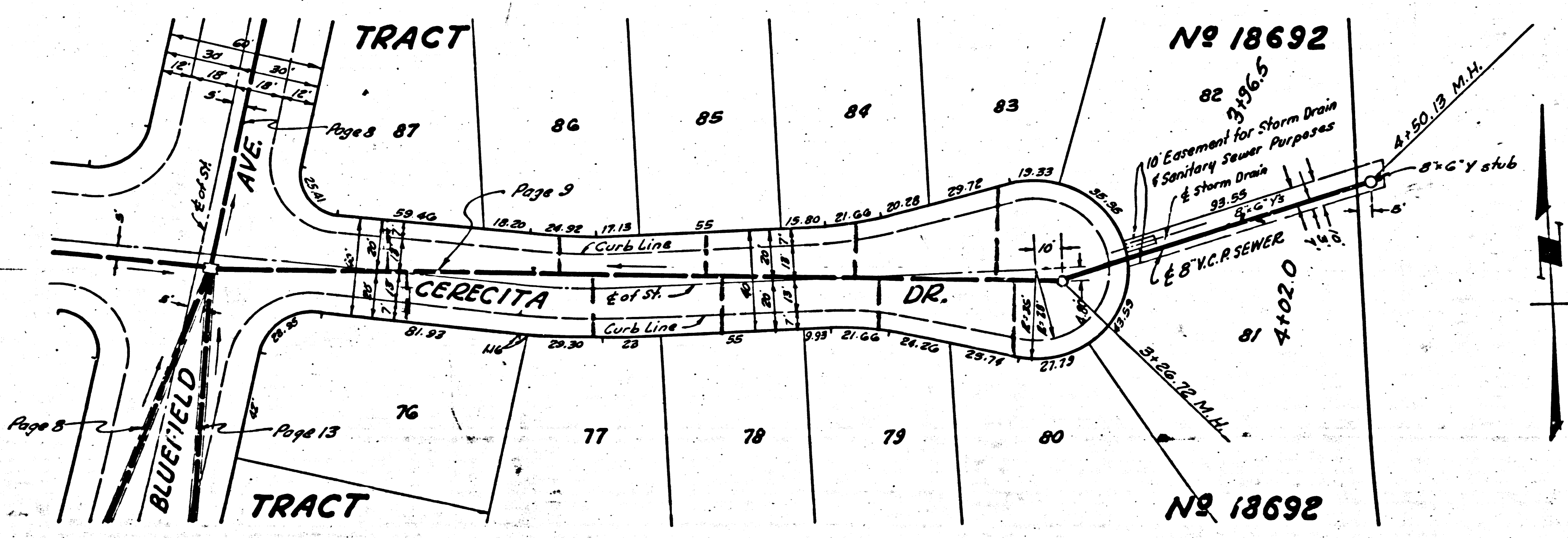
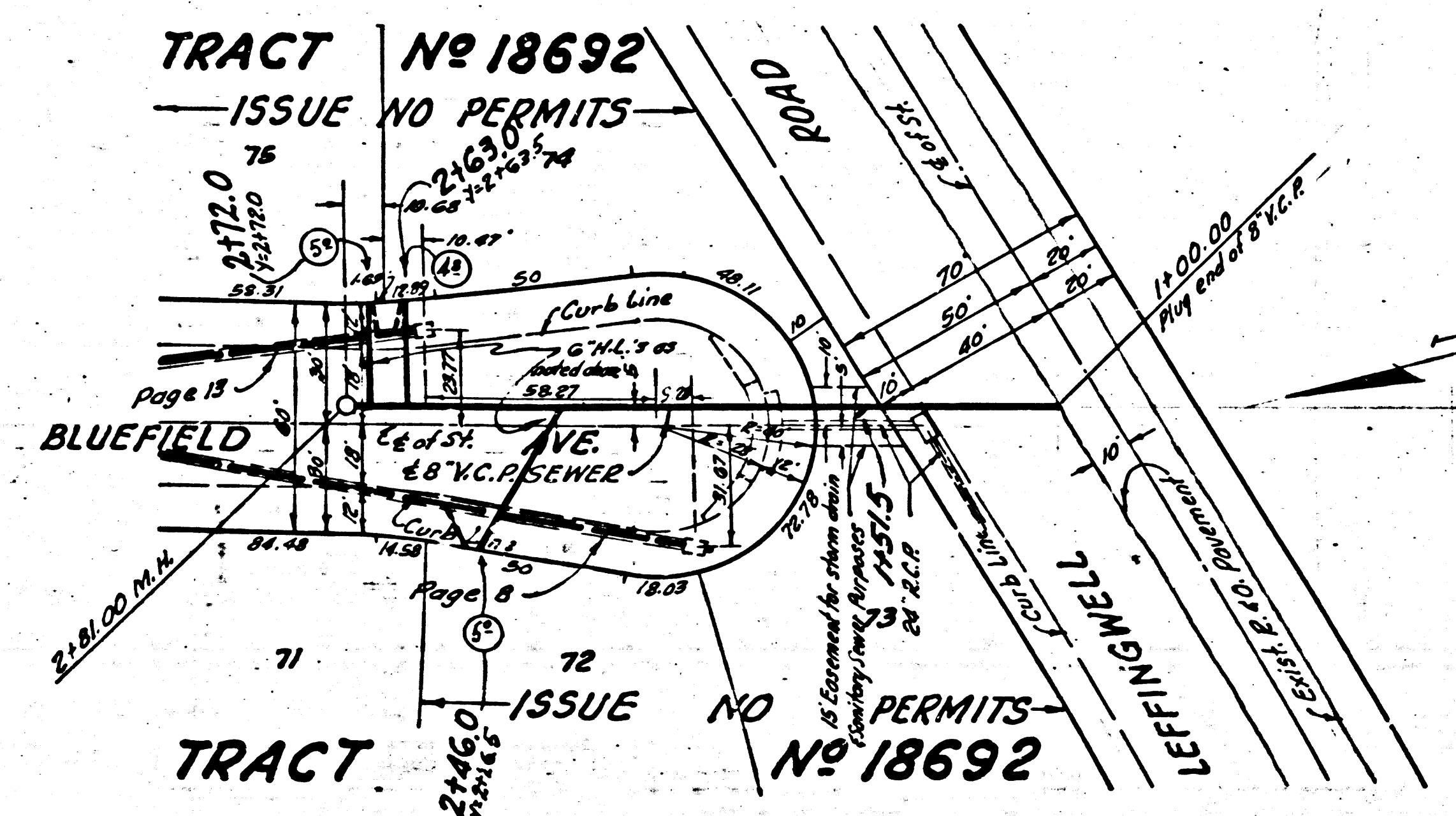


PAGE 13  
 RC. 3341  
 DOUBLE SCALE  
 NO CHARGE FOR CONNECTIONS  
 20,824





PAGE 14  
P.C. 3341  
DOUBLE SCALE  
NO CHARGE FOR CONNECTIONS  
20,825



KC 3341

10