

B.M. 5V-3717, Elev. 156.894
 L & S. on So. Cor. of One Block
 50' N. of ALLPORT AVE & 45' S. of WASHINGTON BLVD.

WHITTIER BLDG. DIST. NO. 11
NOTE:

- Provide stakes on the property lines or property lines produced at right angles to the sewer line at the center line of each manhole.
- No representative of the County Engineer will survey or layout any portion of the work.
- The owner or his authorized representative shall furnish the County Engineer with grade sheets and stations for all house laterals and Y branches and shall provide stakes for them at their proper locations with stationing plainly marked. Any change in location shall be requested in writing by the owner or his representative.
- No revisions shall be made in these plans without the approval of the County Engineer.
1. Use standard manhole frames and covers, S-a-117.
 2. Use standard strength pipe except as noted.
 3. Use cement mortar for all vitrified clay pipe joints.
 4. Resurface all trench within paved area to meet L.A. County Road Dept. or California State Highway Dept. requirements in accordance with permit.
 5. Encase four feet of sewer at points of interference with poles, S-a-119.
 6. House laterals to be constructed with inverts at property line 5 feet below curb grade except as noted.
 7. All structures shall be brick sewer structures, S-a-104.
 8. For allowable leakage test, use Formula No. , Spec's., Sec. 51.
 9. Manhole tops in unimproved Rights-Of-Way to be 6" above finish grade.

PROFILE, ALIGNMENT AND GRADE OF
SANITARY SEWERS
 TO BE CONSTRUCTED IN

P.C. 3342
 PAGE 1

TRACT NO. 18337

20,703

PRIVATE CONTRACT NO. 3342
 W. S. 37

2 SHEETS

Scale: VERT. 1"=4'
 HORIZ. 1"=40' JANUARY, 1955

PREPARED IN THE OFFICES OF
LOVETT & HART

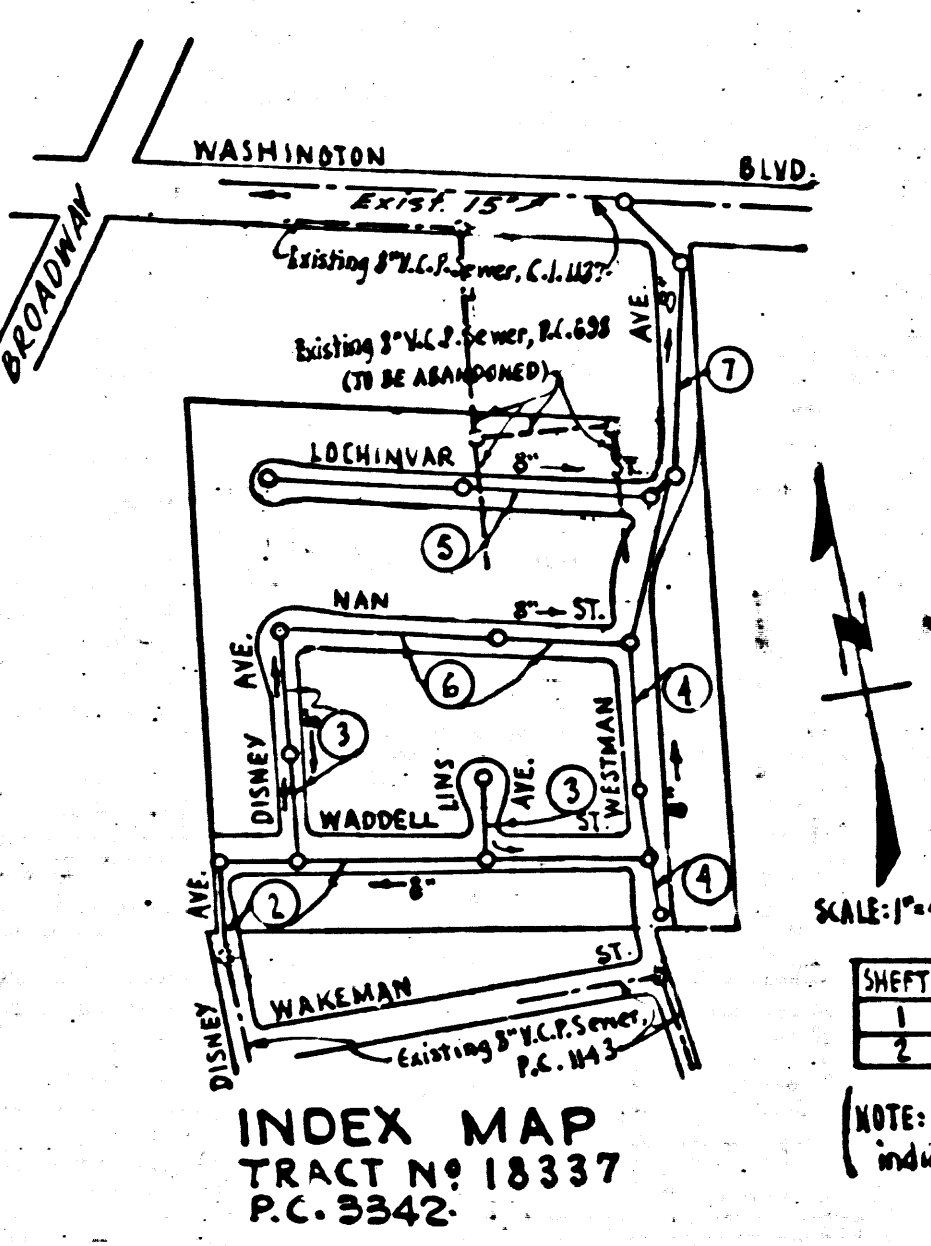
Arthur E. Rosenthal
 Reg. C. E. No. 2805

FOR LEGEND SEE PLAN NO. S-a-64

NOTE:
 Contractor to abandon exist sewer within Tract No. 18337 as shown in index map. Exist sewer line to be sealed at Tract line. Aband. M.H. inlets & outlets to be sealed with brick and cement mortar and brickwork to be removed to a depth of 3' M.H.'s to be backfilled with sand. Salvaged M.H. frames and covers to be used on this contract.

NO CHARGE FOR CONNECTIONS
L. Carter 3-9-55

Complete System Revised:
 Revisions Checked: *R. K. ...* 5-13-55
 Office of County Engineer
 Reg. C. E. No. 7660



SHEET	PAGES
1	3-5
2	6-7

(NOTE: Figures in Parenthesis Indicate Page No's.)

NOTE:
 Grades to which this improvement is to be constructed are shown on plans and profiles. Grade points for top of curbs, center line of streets, or center line of alleys are shown by circles on profiles. At all points between designated points the grade shall be established so as to conform to a straight line drawn between said designated points.

Elevations are in feet above U.S.G.S. datum or mean sea level.

This drawing and the data hereon are hereby made a part of the specifications.

Work shall be constructed according to specifications on file in the office of the County Engineer and shall be prosecuted only in the presence of the County Engineer.

Before work can be started, the contractor must obtain a permit to excavate in County streets from the L.A. County Road Dept., 108 W. 2nd St. and make a deposit with the County Engineer, 133 L.A. County Engineering Building, sufficient to cover the cost of construction inspection and record plans.

Approval of this plan by the County of Los Angeles does not constitute a representation as to the accuracy of the location of or the existence or non-existence of any underground utility, pipe, or structure within the limits of this project. This note applies to all sheets.

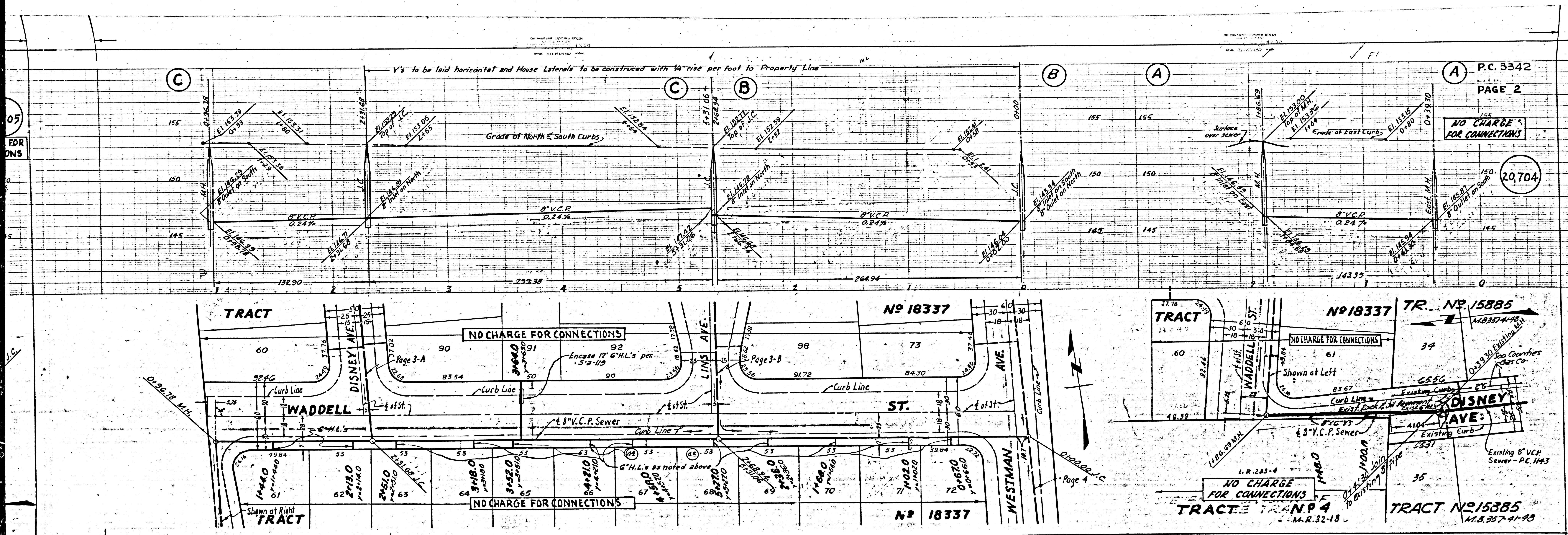
If work is to be done in a State Highway, a permit must be obtained from the State of California, Division of Highways, 120 South Spring Street.

COUNTY OF LOS ANGELES, CALIFORNIA
 Approved, William J. Fox, County Engineer
 Chief Engr. CO. SAN. DIST. NO. 11
 Approved, A. M. Rawm
 Office Engineer
 Checked by: *R. K. ...* 3-11-55
 Office of County Engineer, Reg. C. E. No. 7860

Checked 6-20-55

13

6-23-55
 P.C. 3342

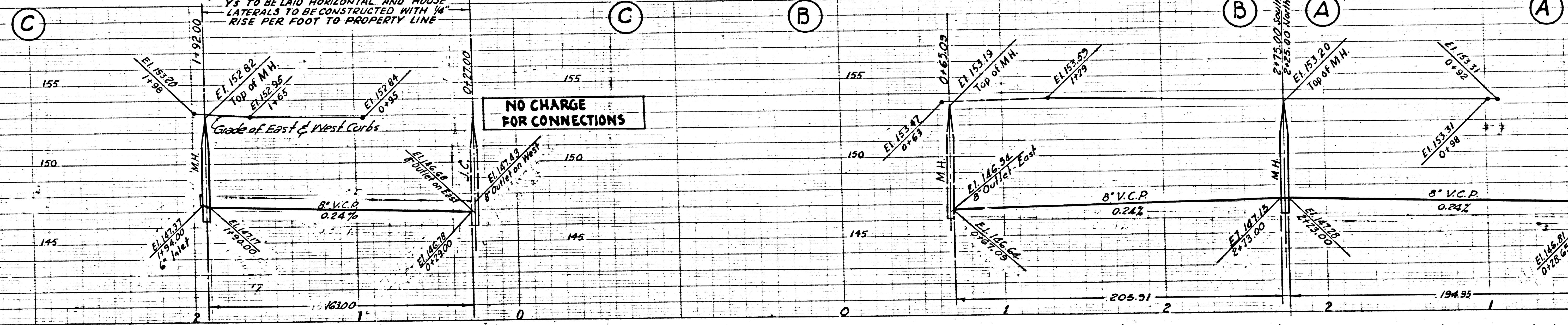


20722 (2)

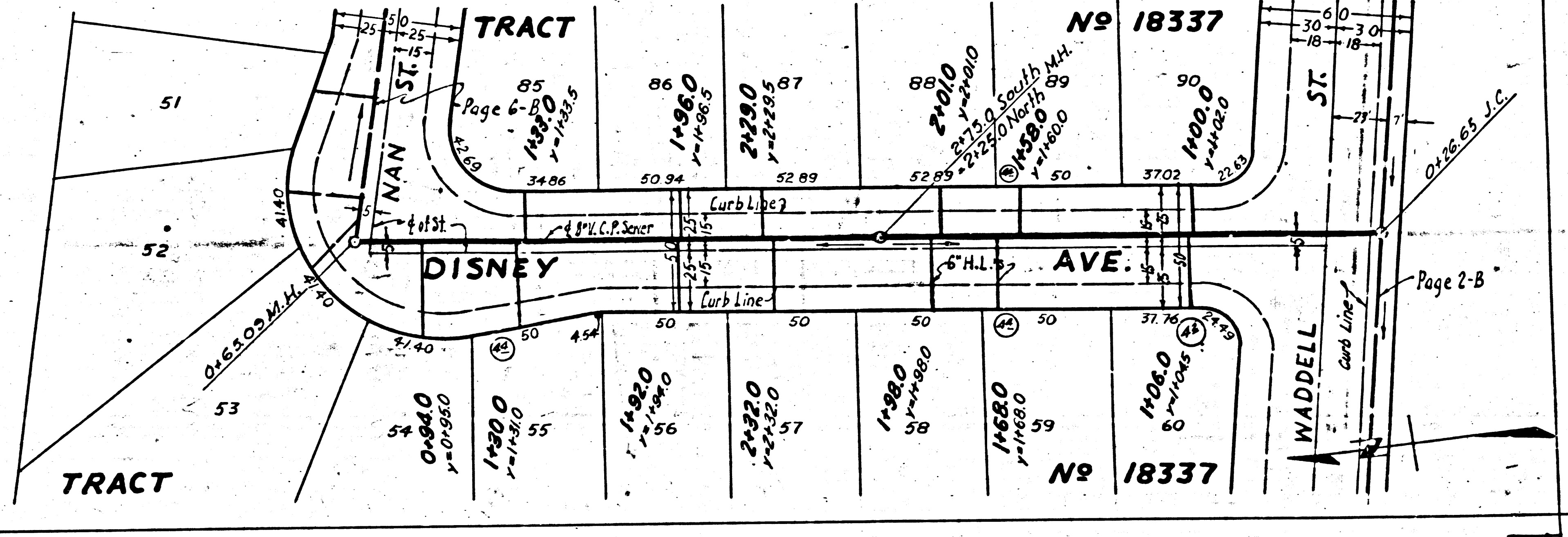
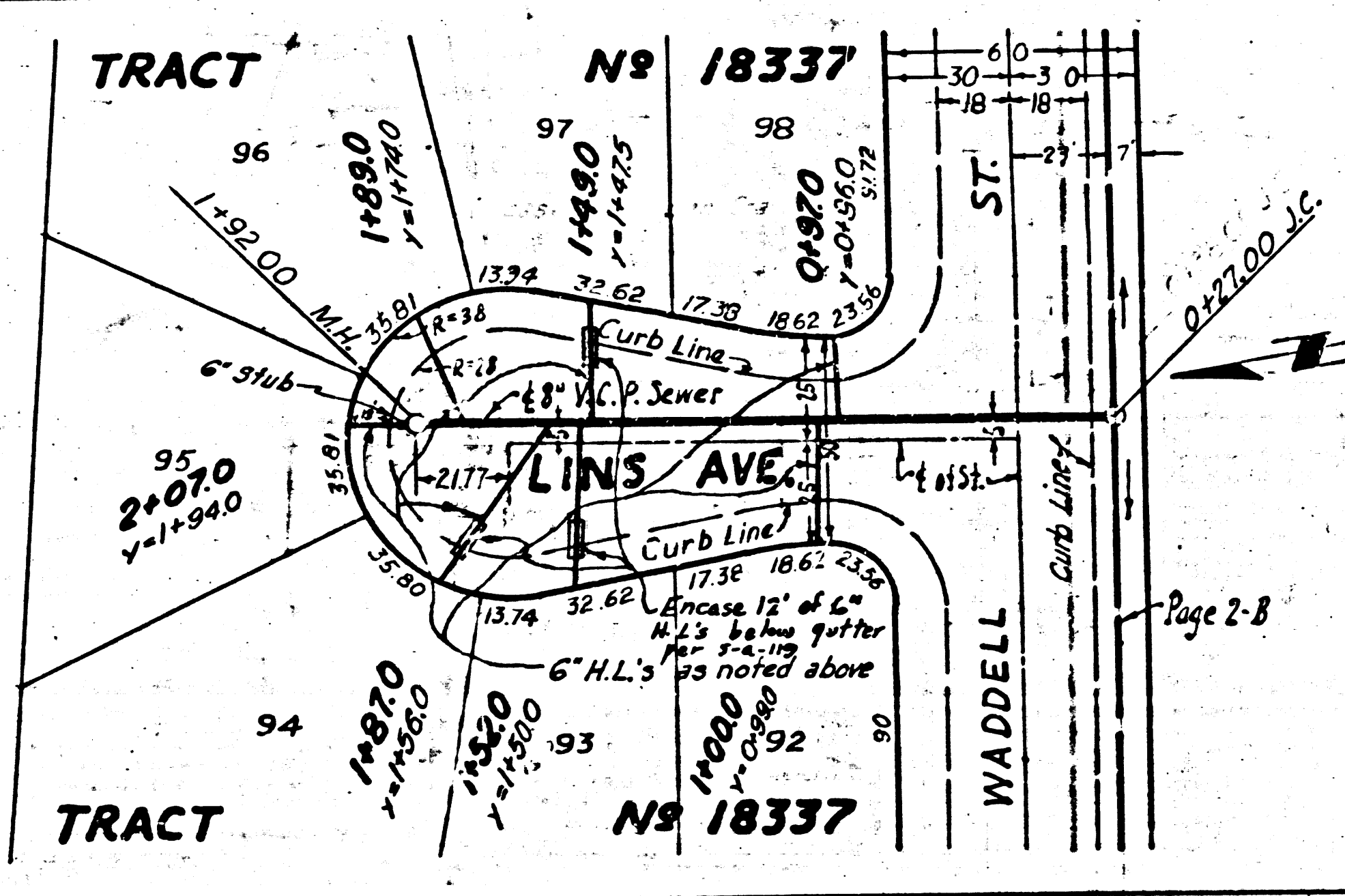
PC 3342

TRACT № 18337

P.C. 3342



PC 3342
 PAGE 3
 20,705
 NO CHARGE FOR CONNECTIONS



20

342

5

NS

0707

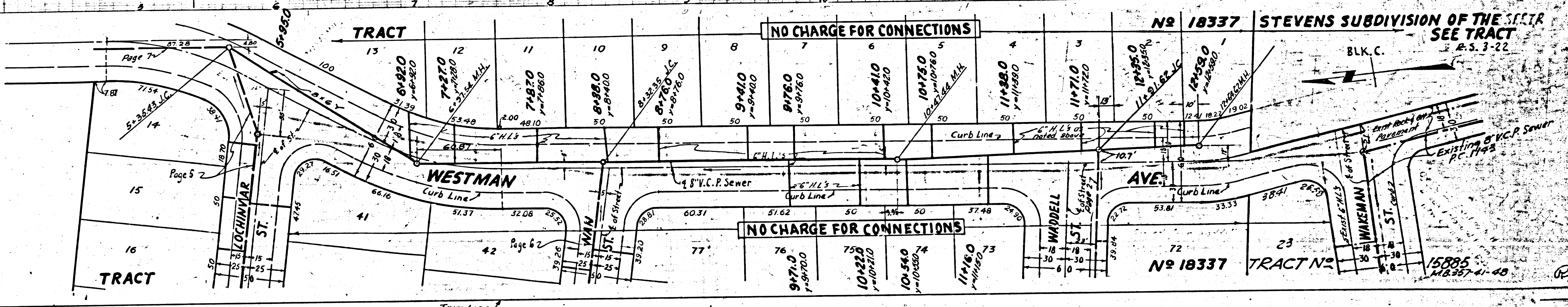
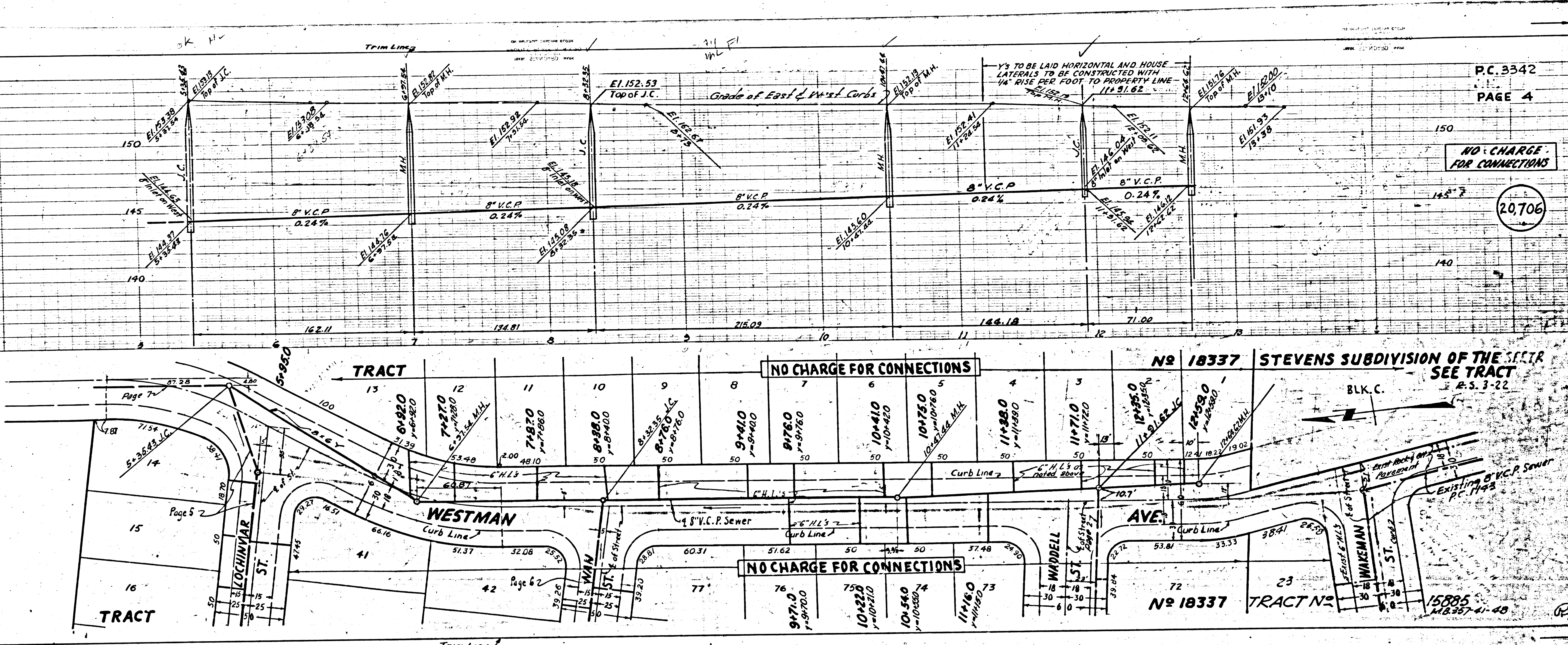
P.C. 3342

PAGE 4

NO CHARGE FOR CONNECTIONS

20,706

TRACT No 18337



P.C. 3342
 P.S. 3-22
 TRACT No 18337

P.C. 3342

PAGE 6

OR CONNECTIONS

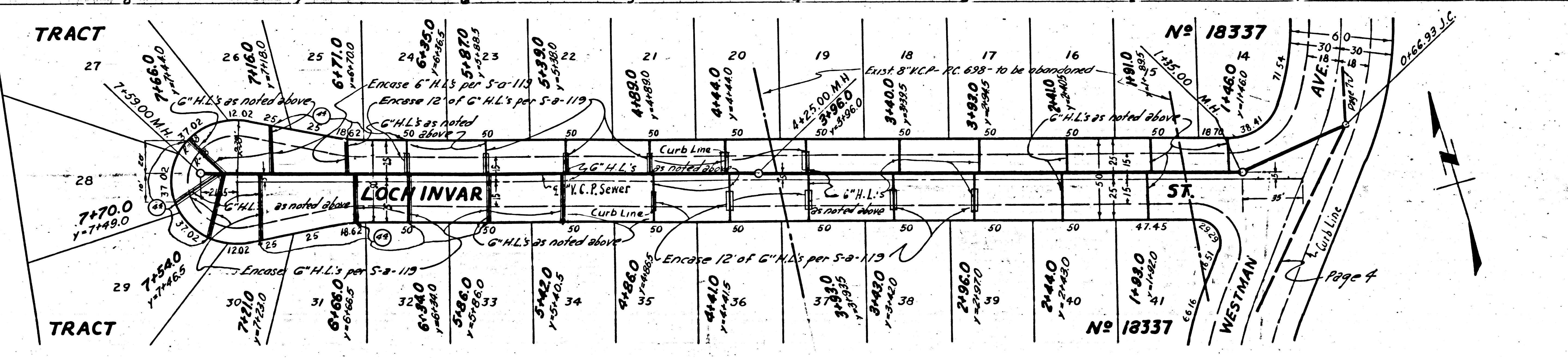
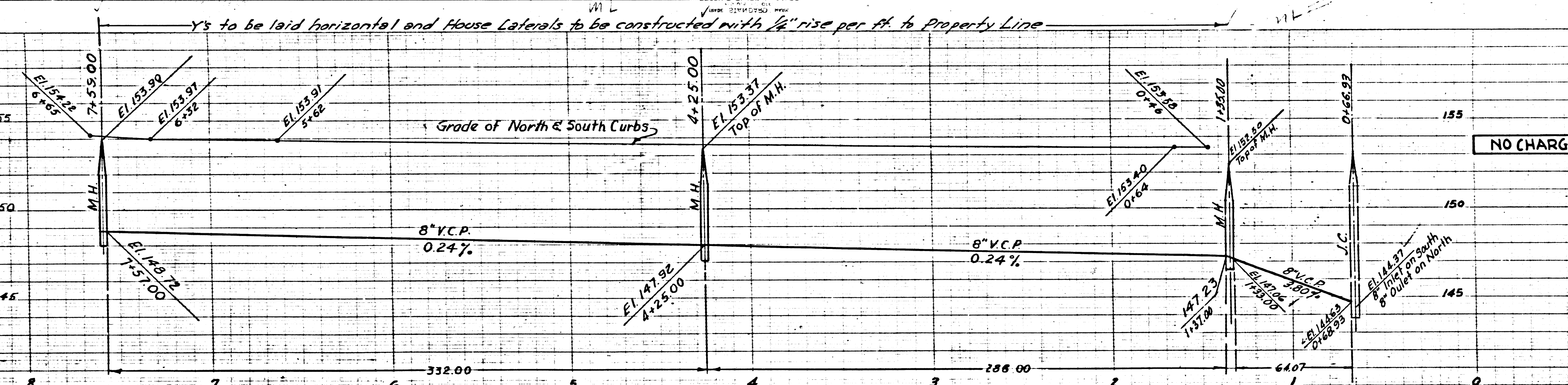
20,708

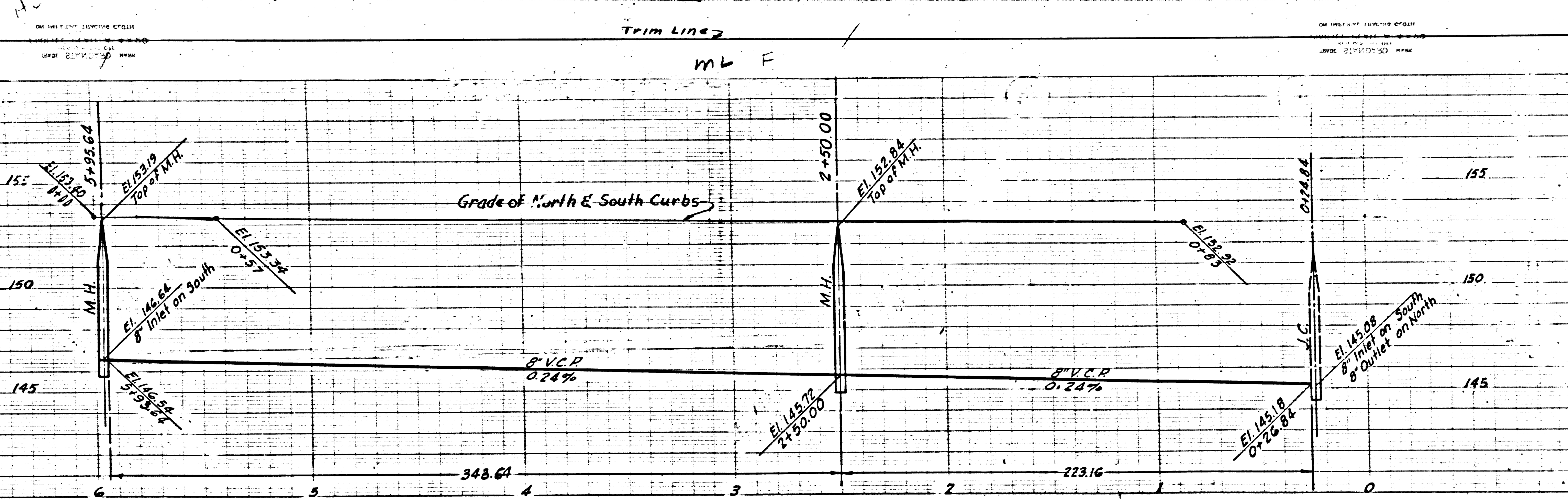
P.C. 3342

PAGE 5

NO CHARGE FOR CONNECTIONS

20,707

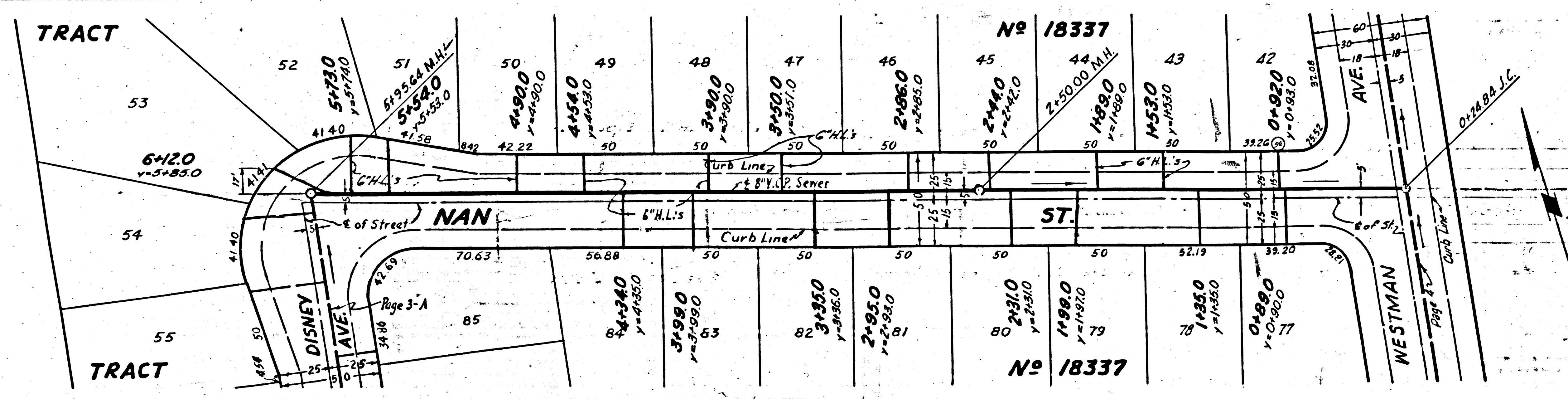




P.C. 3342
PAGE 6

NO CHARGE FOR CONNECTIONS

20,708



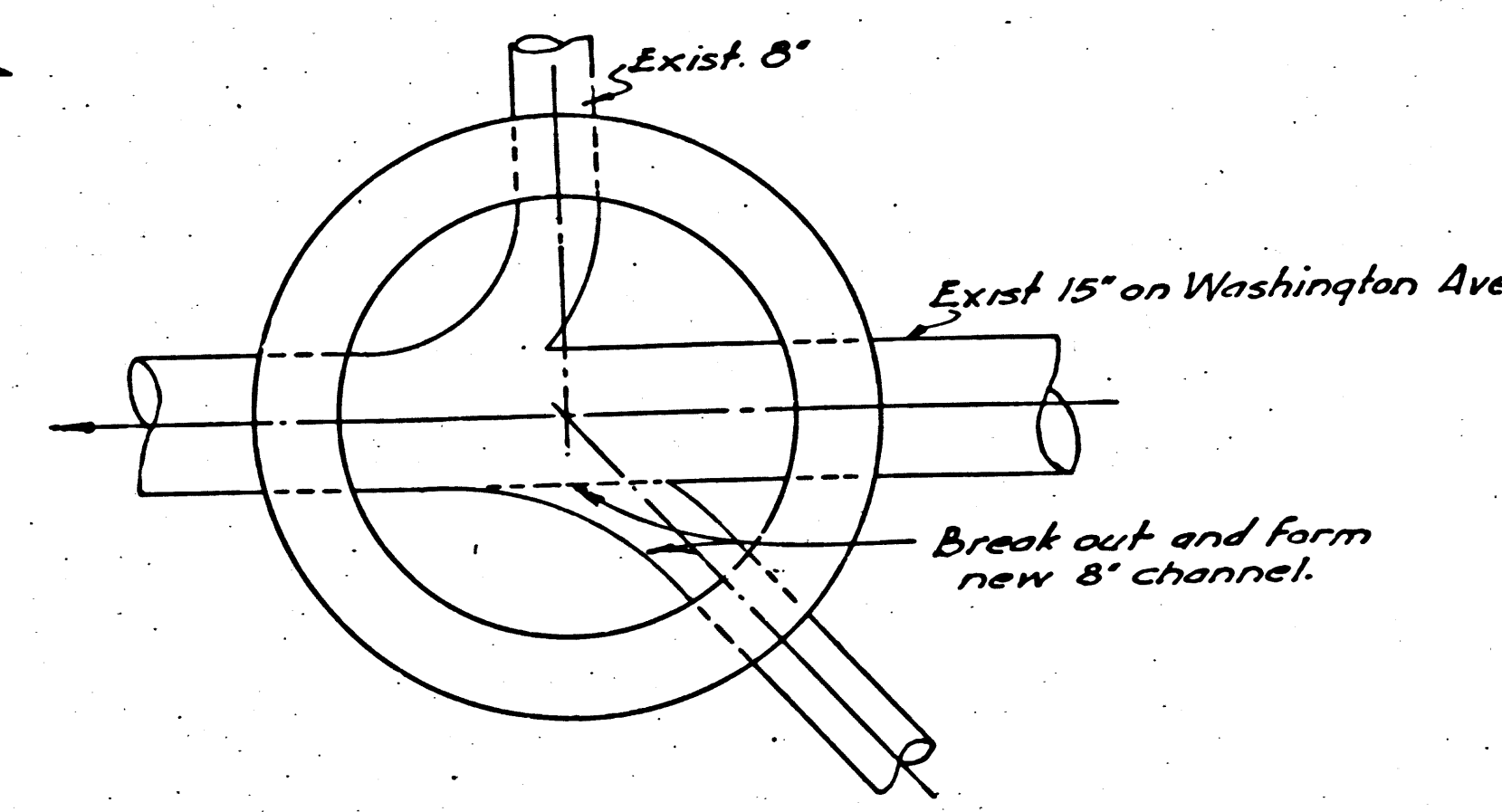
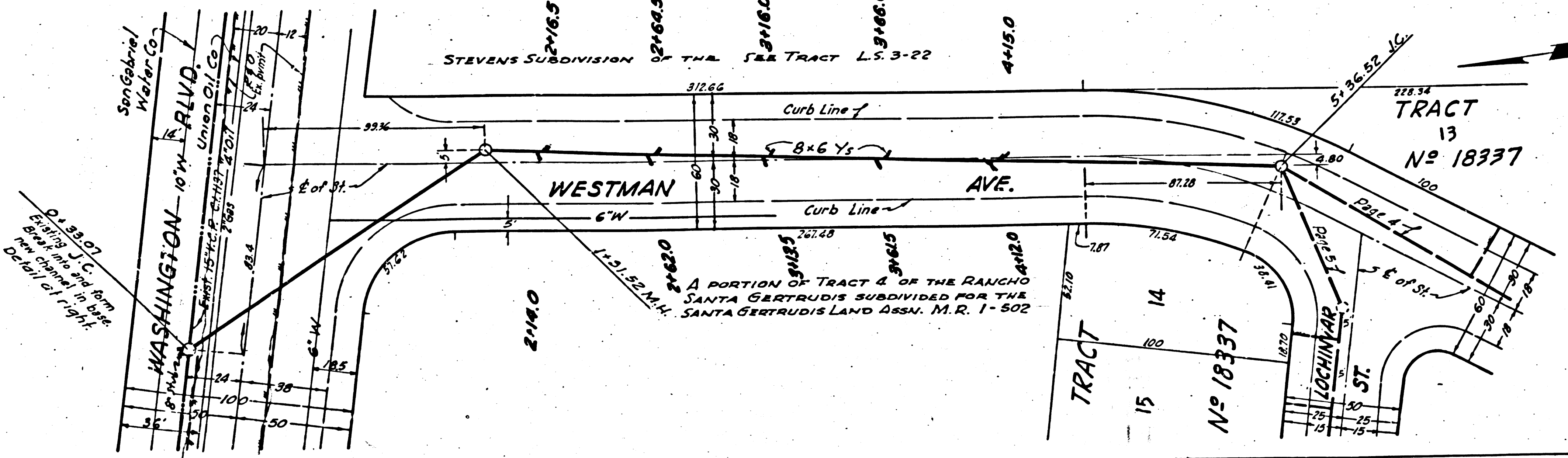
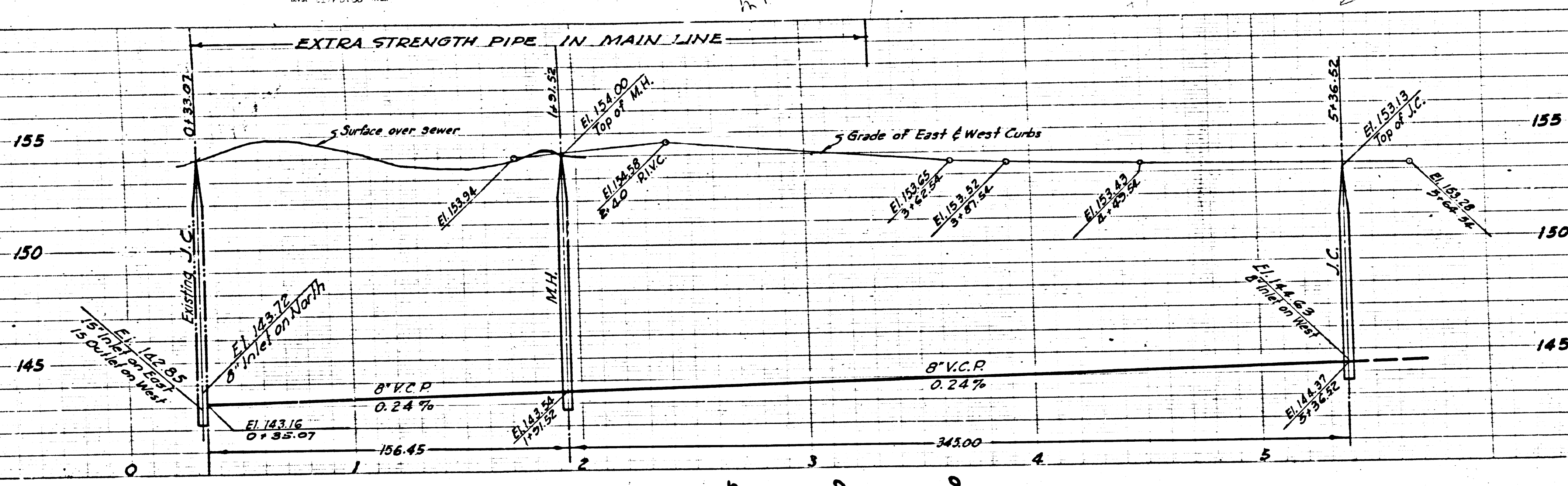
Trim Line
12

PC 3342

PC 3342
PAGE 7

NO CHARGE FOR CONNECTION

2,070.9



CHANNEL DETAIL
for existing manhole at
WASHINGTON BLVD.
Sta. 0+33.07

TRACT No 18337

PC 3342

TRACT No 18337