

NOTE:

- (1) USE STANDARD MANHOLE FRAMES AND COVERS, S-8-117
- (2) USE STANDARD STRENGTH PIPE.
- (3) USE CEMENT MORTAR FOR ALL VITRIFIED CLAY PIPE JOINTS.
- (4) RESURFACE ALL TRENCH WITHIN PAVED AREA TO MEET LOS ANGELES COUNTY ROAD DEPARTMENT REQUIREMENTS IN ACCORDANCE WITH PERMIT FOR ALLOWABLE LEAKAGE TEST, USE FORMULA NO. 1, SPEC. 3, SEC. 31
- (5) ALL STRUCTURES SHALL BE BRICK SEWER STRUCTURES, S-8-104
- (6) BRIDGE FOUR FEET OF SEWER AT POINTS OF INTERFERENCE WITH POLES AS PER S-8-719
- (7) CONSTRUCT TOPS OF ALL STRUCTURES IN RIGHTS-OF-WAY LEVEL WITH FINISHED GRADE.

NOTE:
 PROVIDE STAKES ON THE PROPERTY LINES OR PROPERTY LINES PRODUCED AT RIGHT ANGLES TO THE SEWER LINE AT THE CENTER LINE OF EACH MANHOLE.
 NO REPRESENTATIVE OF THE COUNTY ENGINEER WILL SURVEY OR LAY OUT ANY PORTION OF THE WORK.
 THE OWNER OR HIS AUTHORIZED REPRESENTATIVE SHALL FURNISH THE COUNTY ENGINEER WITH GRADE SHEETS & STATIONS OF ALL HOUSE CONNECTIONS & BRANCHES & SHALL PROVIDE STAKES FOR THEM AT THEIR PROPER LOCATIONS WITH STATIONING PLAINLY MARKED. ANY CHANGE OF LOCATION SHALL BE REQUESTED IN WRITING BY THE OWNER OR HIS REPRESENTATIVE.
 NO REVISIONS SHALL BE MADE IN THESE PLANS WITHOUT APPROVAL OF THE COUNTY ENGINEER.

TEMPLE CITY BLDG. DIST. No. 5

**PROFILE, ALIGNMENT, AND GRADE OF
 SANITARY SEWERS
 TO BE CONSTRUCTED IN
 PRIVATE R/W
 SOUTH OF LONGDEN AVE. BETWEEN
 BALDWIN AVE & GOLDEN WEST AVE.**

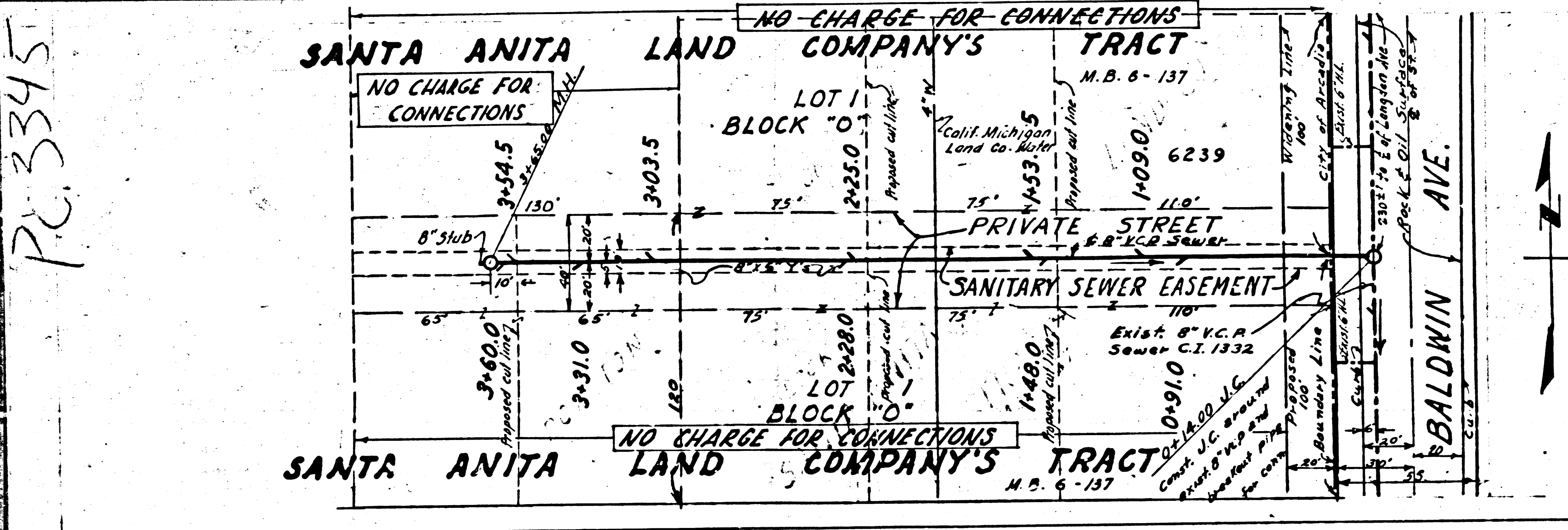
**PC. 3345
 PAGE 1**

**PRIVATE CONTRACT No 3345
 W.S. 44
 ONE SHEET**

DATE: JANUARY 1955

Scale: Vert. 1" = 4'
 Horiz. 1" = 40'

PREPARED IN THE OFFICE OF
 BY *Charles M. Collins*
 REG. C.E. No 6088



INDEX MAP
 P.C. 3345

SHEET No	PAGES
1	1

NO CHARGE FOR CONNECTIONS

L. Collins 3-7-55

Scale 1" = 600'

dated 7-29-55 *W. L. ...*

FOR LEGEND

See Plan No 3-2-64

GRADES TO WHICH THIS IMPROVEMENT IS TO BE CONSTRUCTED ARE SHOWN ON PLANS & PROFILES. ELEVATIONS ARE IN FEET ABOVE U.S.C. DATUM OR MEAN SEA LEVEL.

THIS DRAWING AND THE DATA HEREON ARE HEREBY MADE A PART OF THE SPECIFICATIONS. WORK SHALL BE CONSTRUCTED ACCORDING TO SPECIFICATION ON FILE IN THE OFFICE OF THE COUNTY ENGINEER AND SHALL BE PROTECTED ONLY IN THE PRESENCE OF THE COUNTY ENGINEER.

BEFORE WORK CAN BE STARTED THE CONTRACTOR MUST OBTAIN A PERMIT TO EXCAVATE IN COUNTY STREETS FROM LOS ANGELES COUNTY ROAD DEPARTMENT, NO. 1027, 3 OF ST. AND MAKE A DEPOSIT WITH THE COUNTY ENGINEER, 133 L.S. COUNTY ENGINEERING BUILDING, SUFFICIENT TO COVER COST OF CONSTRUCTION INSPECTION AND RECORD PLANS.

IF WORK IS TO BE DONE IN A STATE HIGHWAY, A PERMIT MUST BE OBTAINED FROM THE STATE OF CALIFORNIA, DIVISION OF HIGHWAYS, 120 SOUTH SPRING ST. AFTER MAKING THE DEPOSIT WITH THE COUNTY ENGINEER.

APPROVAL OF THIS PLAN BY THE COUNTY OF LOS ANGELES DOES NOT CONSTITUTE A REPRESENTATION AS TO THE ACCURACY OF THE LOCATION OR THE EXISTENCE OR NON-EXISTENCE OF ANY UNDERGROUND UTILITY, PIPE, OR STRUCTURE WITHIN THE LIMITS OF THIS PROJECT.

COUNTY OF LOS ANGELES, CALIFORNIA

APPROVED, WILLIAM J. FOX COUNTY ENGINEER APPROVED, M. RAWIN CHIEF ENGINEER OF COUNTY DISTRICT NO 15

BY *W. Collins* SANITARIAN ENGINEER BY *W. L. ...* OFFICE ENGINEER

CITY OF ARCADIA

APPROVED *Wm. ...* CITY ENGINEER

CHECKED BY *J. ...* OFFICE OF COUNTY ENGINEER REG. C.E. No 5406

D.L. DAWNING - RIGHTS OF WAY

PC. 3345 32-33-34