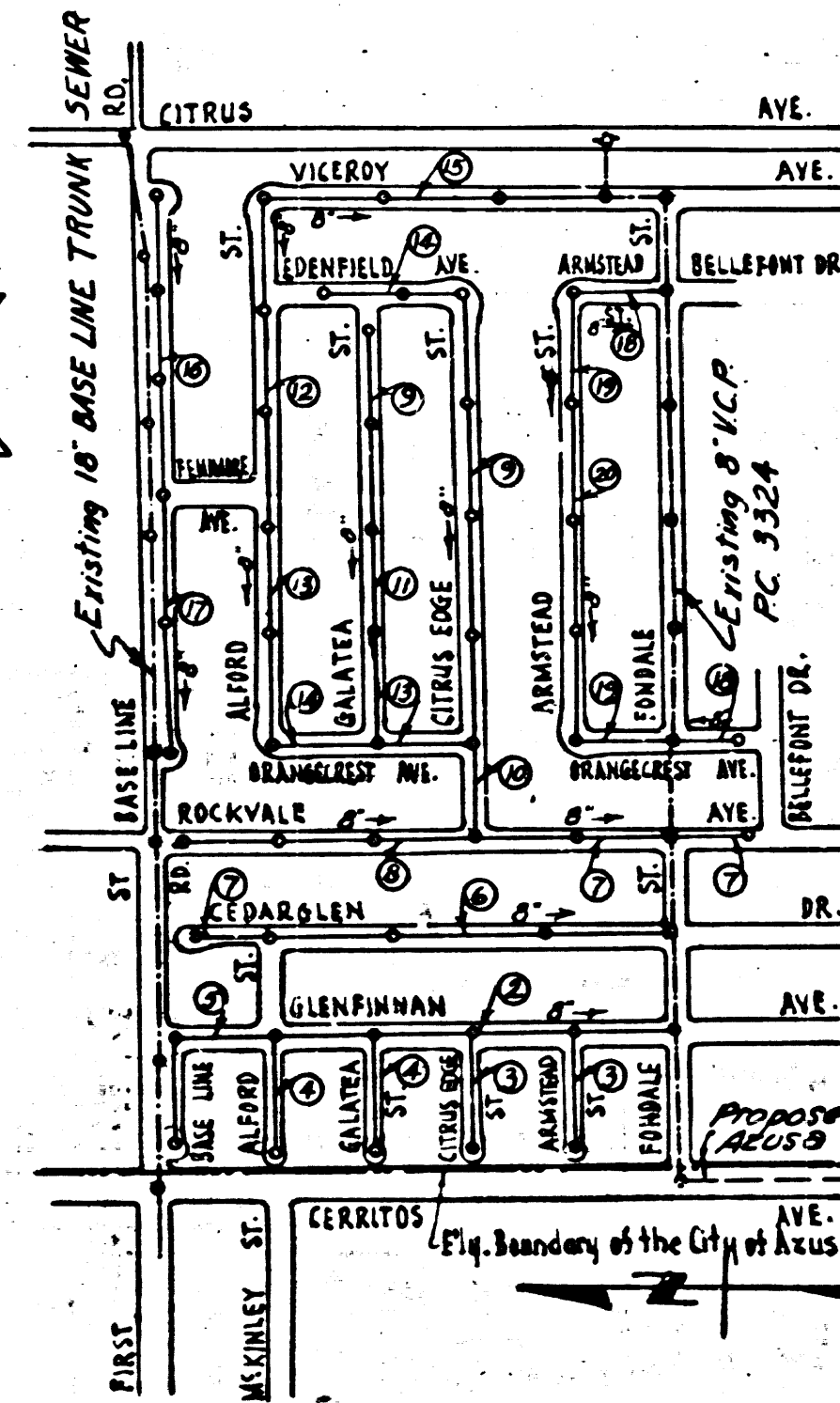


SAN DIMAS BLDG. DIST. N° 10

B.M. S.G.-14 Elev. 563.988 (1952 adj.)
 L.I.N. in center of Headwall 25' No. of 1 BROADWAY AVE
 115' E. of L.A. St. (ROCKVALE AVE.)



INDEX MAP
 SCALE: 1" = 600'
 TRACT N° 20494
 P.C. 3350

(NOTE: Figures in circles indicate Page N°'s.)

SHEET N°	PAGES
1	1 - 4
2	5 - 8
3	9 - 12
4	13 - 16
5	17 - 20

NOTE:
 Provide stakes on the property lines or property lines produced at right angles to the sewer line at the center line of each manhole.
 No representative of the County Engineer will survey or layout any portion of the work.
 The owner or his authorized representative shall furnish the County Engineer with grade sheets and stations for all house laterals and Y branches and shall provide stakes for them at their proper locations with stationing plainly marked. Any change in location shall be requested in writing by the owner or his representative.
 No revisions shall be made in these plans without the approval of the County Engineer.

1. Use standard manhole frames and covers, S-a-117.
2. Use standard strength pipe except as noted.
3. Use cement mortar for all vitrified clay pipe joints.
4. Resurface all trench within paved area to meet L.A. County Road Dept. or California State Highway Dept. requirements in accordance with permit.
5. Encase four feet of sewer at points of interference with poles, S-a-119.
6. House laterals to be constructed with inverts at property line 6 feet below curb grade except as noted.
7. All structures shall be brick sewer structures, S-a-104.
8. For allowable leakage test, use Formula No. 1, Spec's, Sec. 51.
9. Manhole tops in unimproved Rights-Of-Way to be 6" above finish grade.

Before breaking into any existing structure and before obtaining acceptance of this work, County Sanitation District should be notified in order that required inspection may be made.

NO CHARGE FOR CONNECTIONS
 2-21-55

checked 5-6-55 W. Green

PROFILE, ALIGNMENT AND GRADE OF
SANITARY SEWERS
 TO BE CONSTRUCTED IN

TRACT N° 20494

PC. 3350
 PAGE 1

20323

PRIVATE CONTRACT NO. 3350
 W. S. 47

5 SHEETS
 DECEMBER 1954

Scale: VERT. 1" = 4'
 HORIZ. 1" = 40'

PREPARED IN THE OFFICES OF
JENNINGS ENGINEERING CO.
 FOR LEGEND SEE PLAN NO. S-a-64

NOTE:
 Grades to which this improvement is to be constructed are shown on plans and profiles. Grade points for top of curbs, center line of streets, or center line of alleys are shown by circles on profiles. At all points between designated points the grade shall be established so as to conform to a straight line drawn between said designated points.
 Elevations are in feet above U.S.G.S. datum or mean sea level.
 This drawing and the data hereon are hereby made a part of the specifications.
 Work shall be constructed according to specifications on file in the office of the County Engineer and shall be prosecuted only in the presence of the County Engineer.
 Before work can be started, the contractor must obtain a permit to excavate in County streets from the L.A. County Road Dept., 108 W. 2nd St. and make a deposit with the County Engineer, 133 L.A. County Engineering Building, sufficient to cover the cost of construction inspection and record plans.
 Approval of this plan by the County of Los Angeles does not constitute a representation as to the accuracy of the location of or the existence or non-existence of any underground utility, pipe, or structure within the limits of this project. This note applies to all sheets.
 If work is to be done in a State Highway, a permit must be obtained from the State of California, Division of Highways, 120 South Spring Street.

COUNTY OF LOS ANGELES, CALIFORNIA
 Approved, William J. Fox, County Engineer
 Approved, A. M. Rawls, Chief Engineer, SAN DIST. NO. 22
 Checked by: P. R. Kubacki, 2-21-55
 Office of County Engineer, Reg. C. E. No. 7860

(20)

Rel.

PC 3350
PAGE 3
SHEET 1

20,325

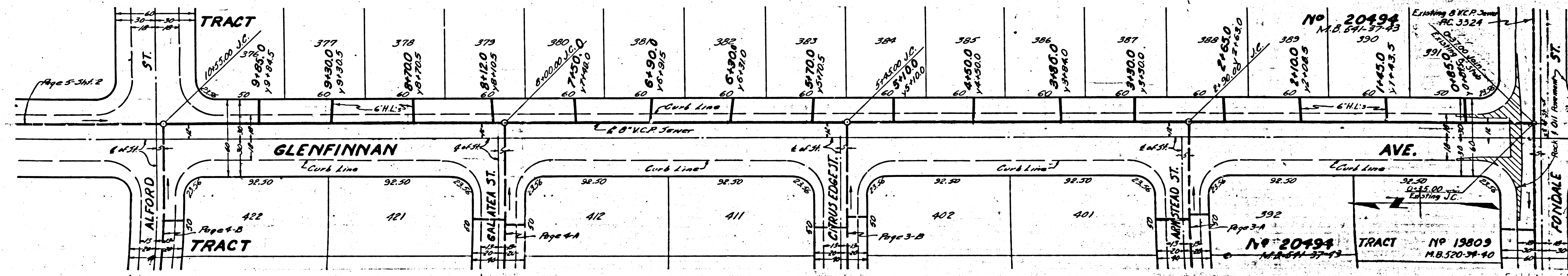
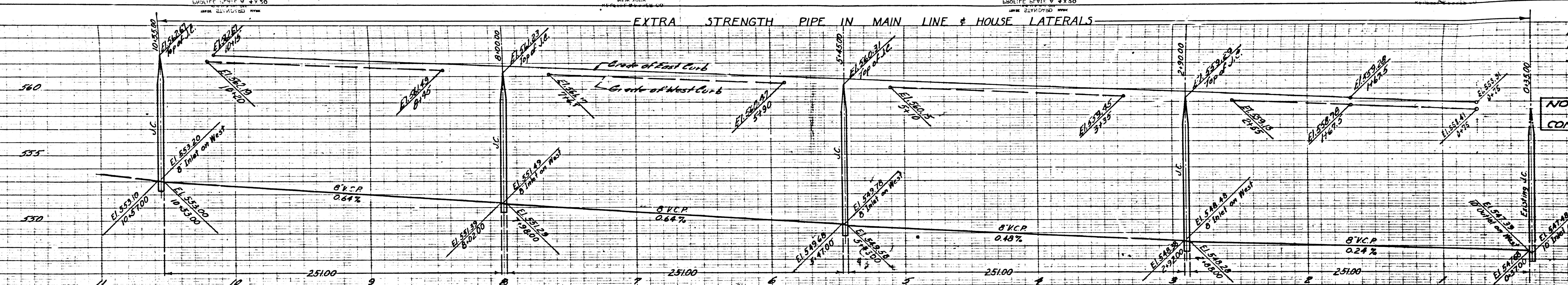
ARGE FOR
NECTIONS

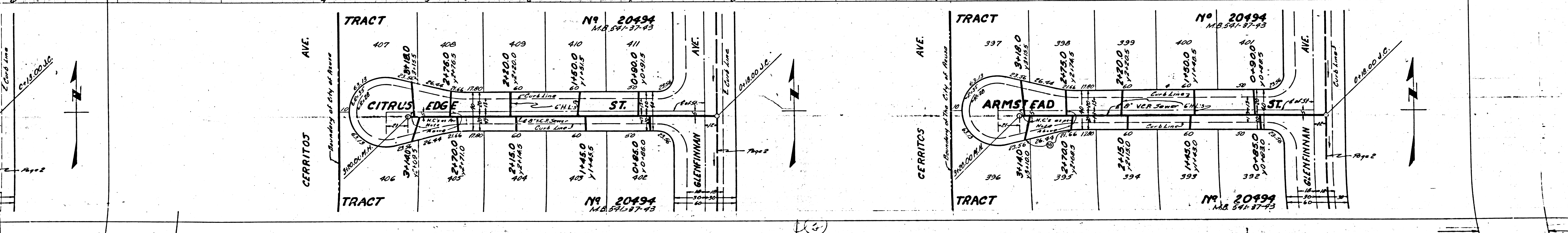
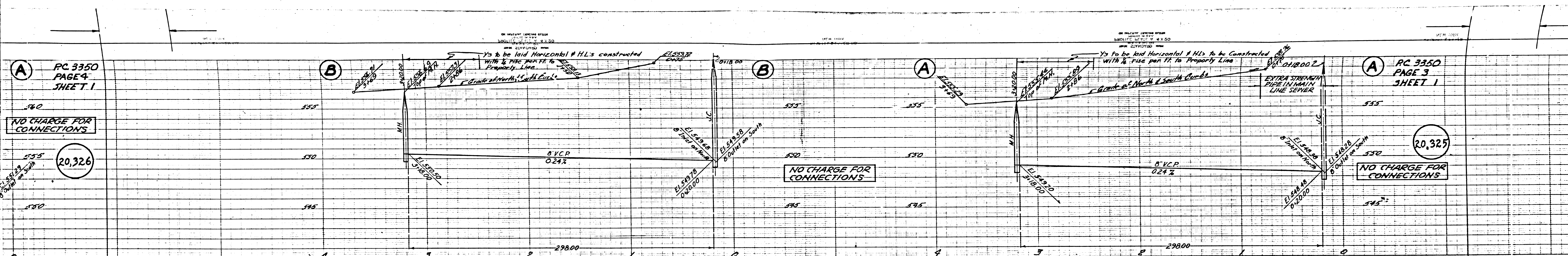
EXTRA STRENGTH PIPE IN MAIN LINE & HOUSE LATERALS

PC 3350
PAGE 2
SHEET 1

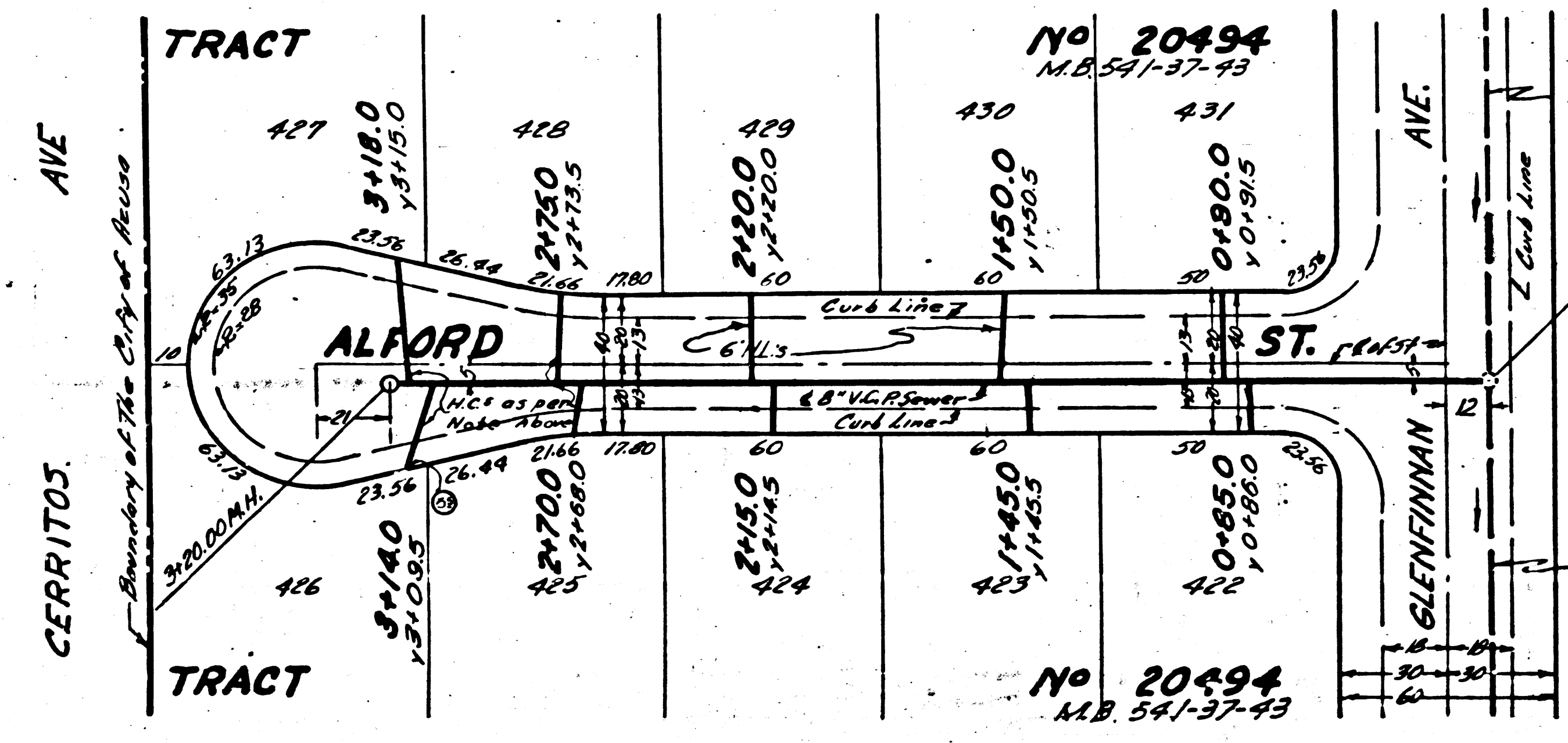
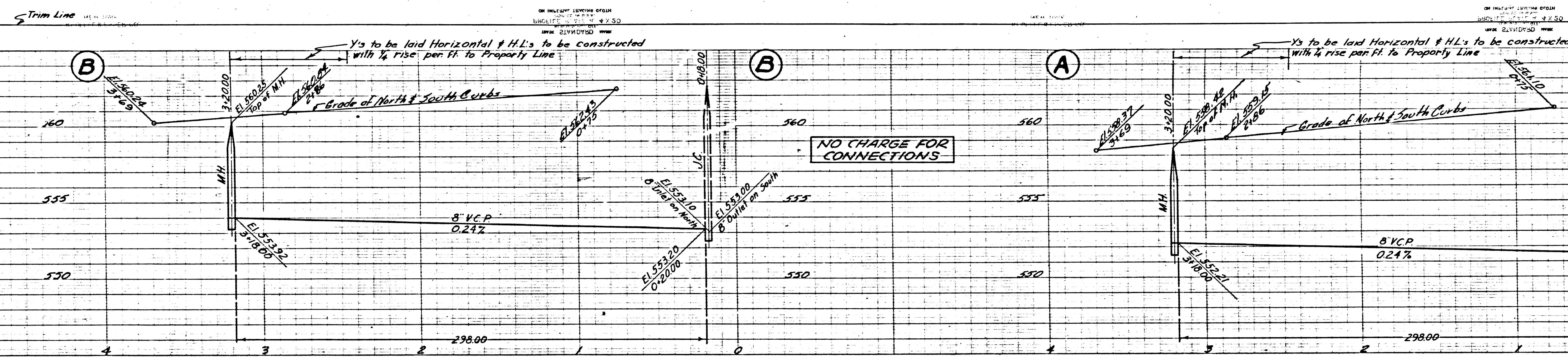
NO CHARGE
FOR
CONNECTIONS

20,324





PC 3360

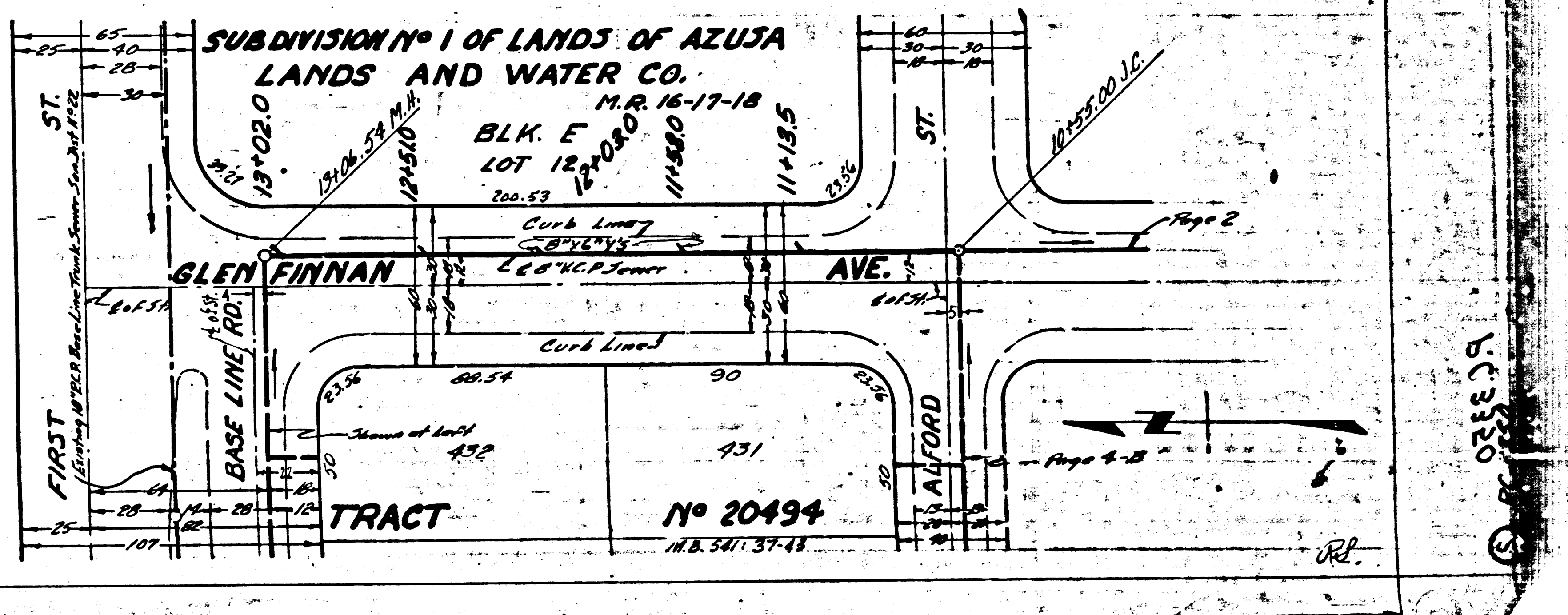
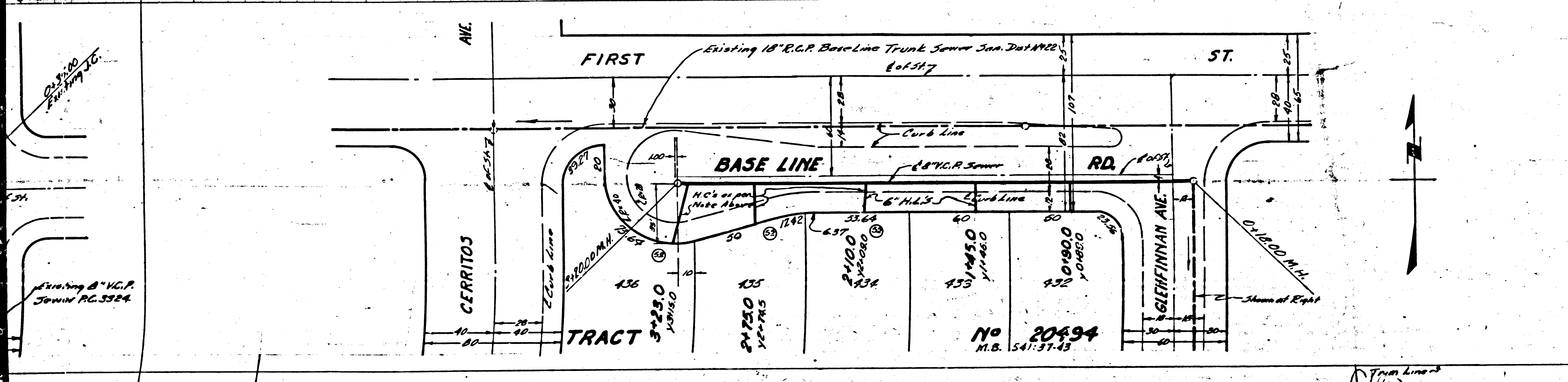
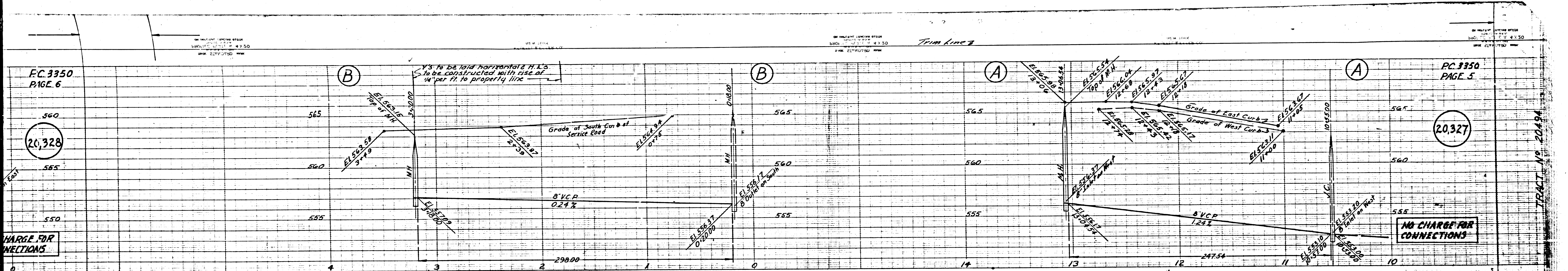


FC 3350
PAGE 6

PC 3350
PAGE 5

20,328

20,327



Trim Line 2
174

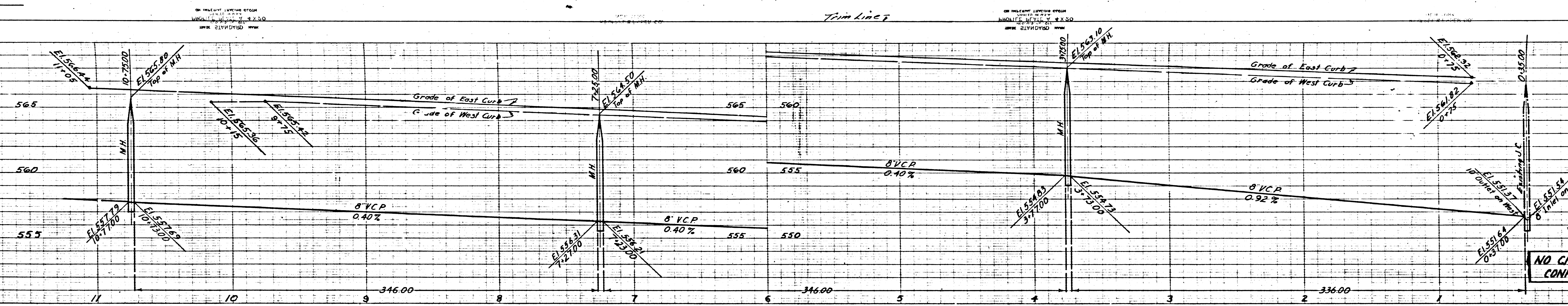
TRACT NO. 20494

FC 3350
PAGE 5

PC 3350
PAGE 7
SHEET 2

20,329

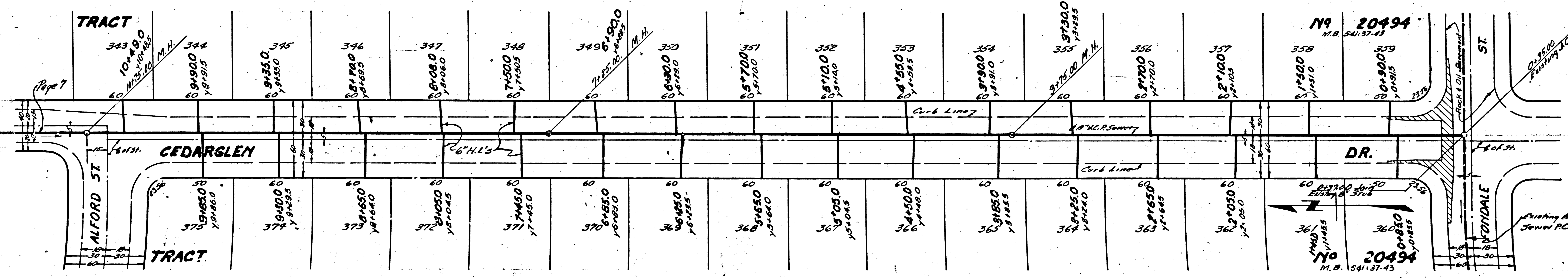
CHARGE
CONNECTIONS



PC 3350
PAGE 6

20,328

NO CHARGE FOR
CONNECTIONS



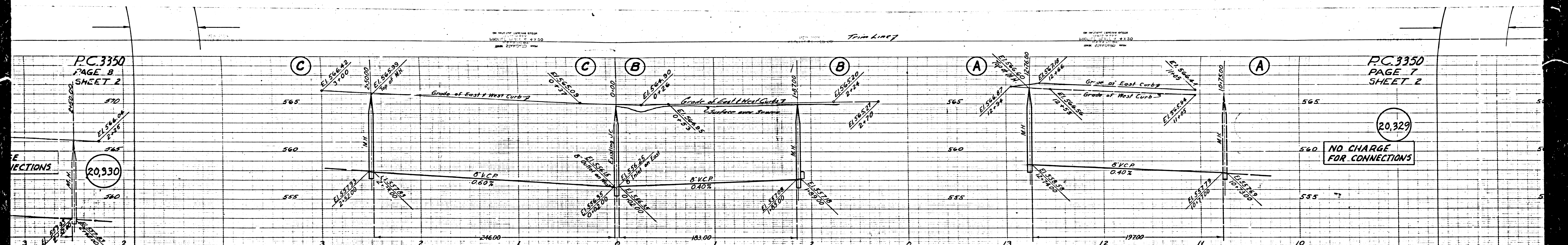
N9 20494
M.B. 54137-43

N9 20494
M.B. 54137-43

Joining B.V.C.P.
Joiner PC 3324

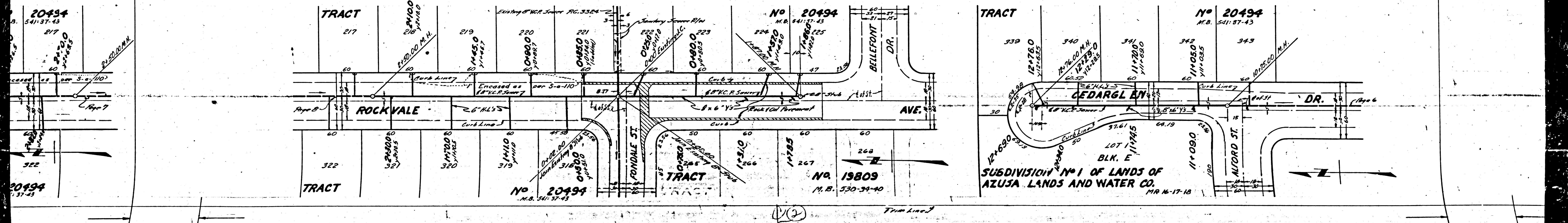
PC 3350
PAGE 8
SHEET 2

PC 3350
PAGE 7
SHEET 2

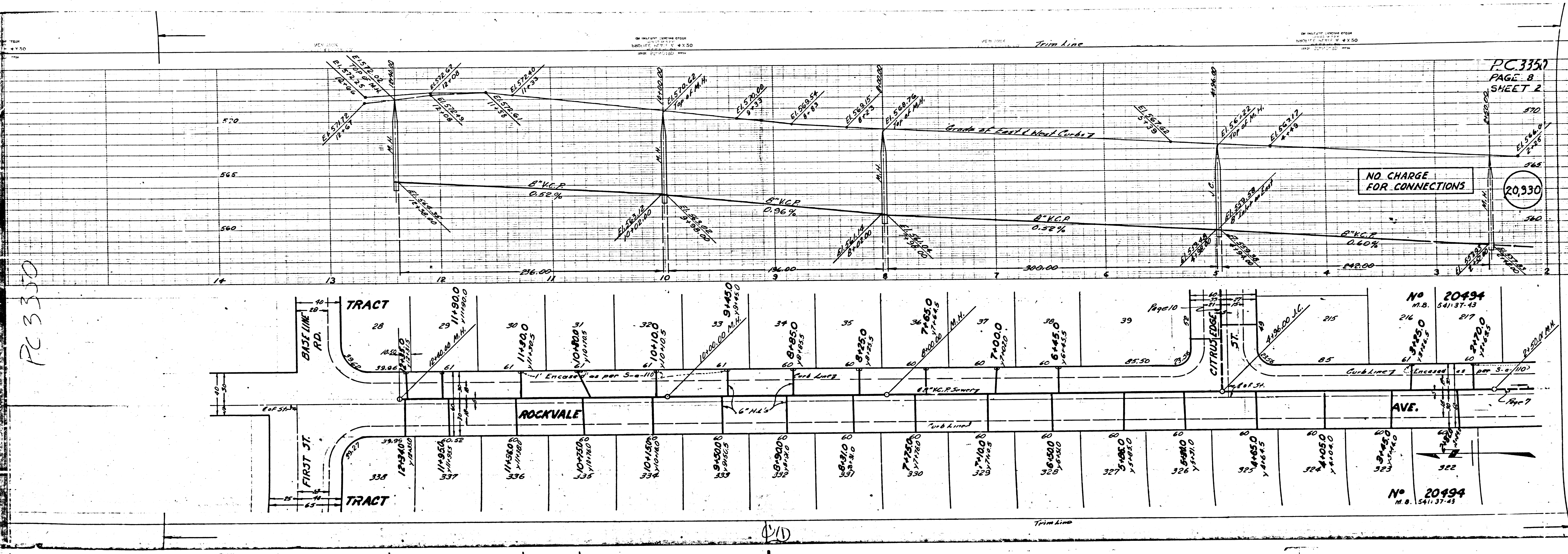


NO CHARGE FOR CONNECTIONS

NO CHARGE FOR CONNECTIONS



(V2)



PC 3350

PC 3350
PAGE 8
SHEET 2

NO CHARGE
FOR CONNECTIONS

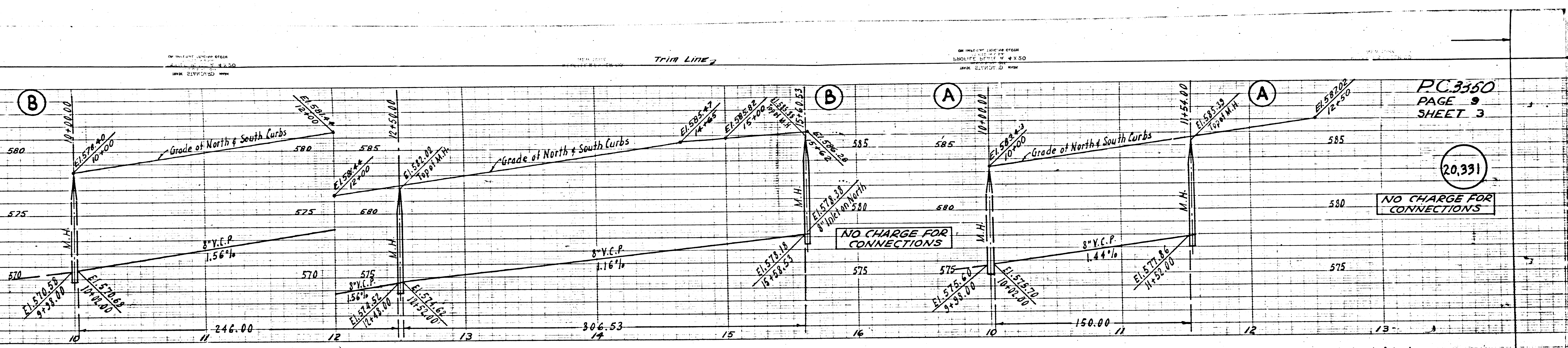
20,330

No 20494
M.B. 54137-43
216
217
218
219
220
221
222
223
224
225
226
227
228
229
230
231
232
233
234
235
236
237
238
239
240
241
242
243
244
245
246
247
248
249
250
251
252
253
254
255
256
257
258
259
260
261
262
263
264
265
266
267
268
269
270
271
272
273
274
275
276
277
278
279
280
281
282
283
284
285
286
287
288
289
290
291
292
293
294
295
296
297
298
299
300

No 20494
M.B. 54137-43

1/1

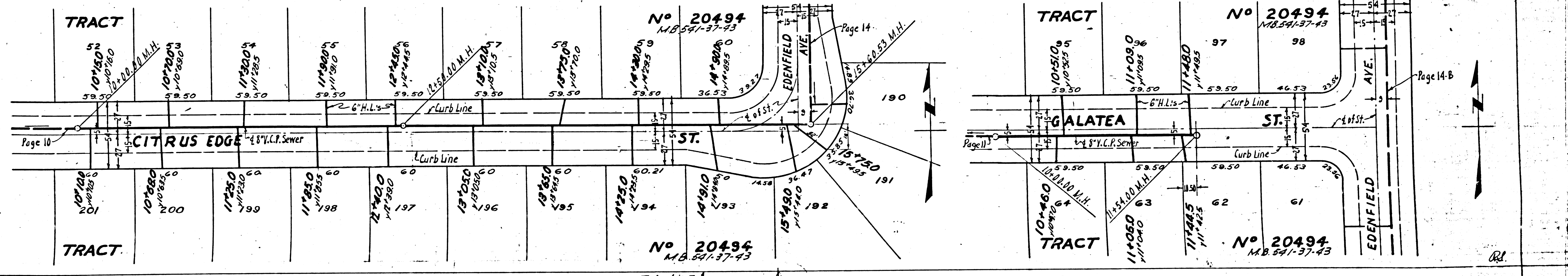
Trim line



PC 3550
PAGE 9
SHEET 3

20,391

NO CHARGE FOR CONNECTIONS



TRACT
No 20494
M.B. 541-37-43

TRACT
No 20494
M.B. 541-37-43

TRACT
No 20494
M.B. 541-37-43

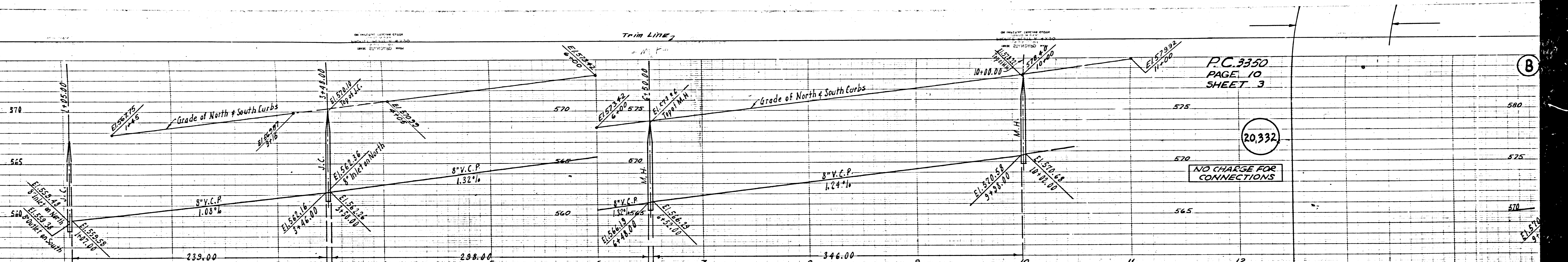
TRACT
No 20494
M.B. 541-37-43

TRACT
No 20494
M.B. 541-37-43

Trim Line

CA

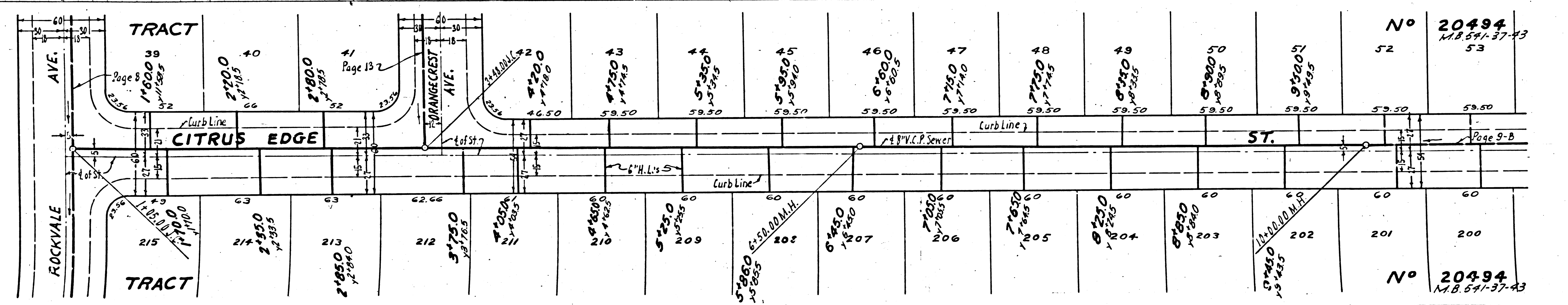
REL



PC.3350
PAGE 10
SHEET 3

20332

NO CHARGE FOR CONNECTIONS



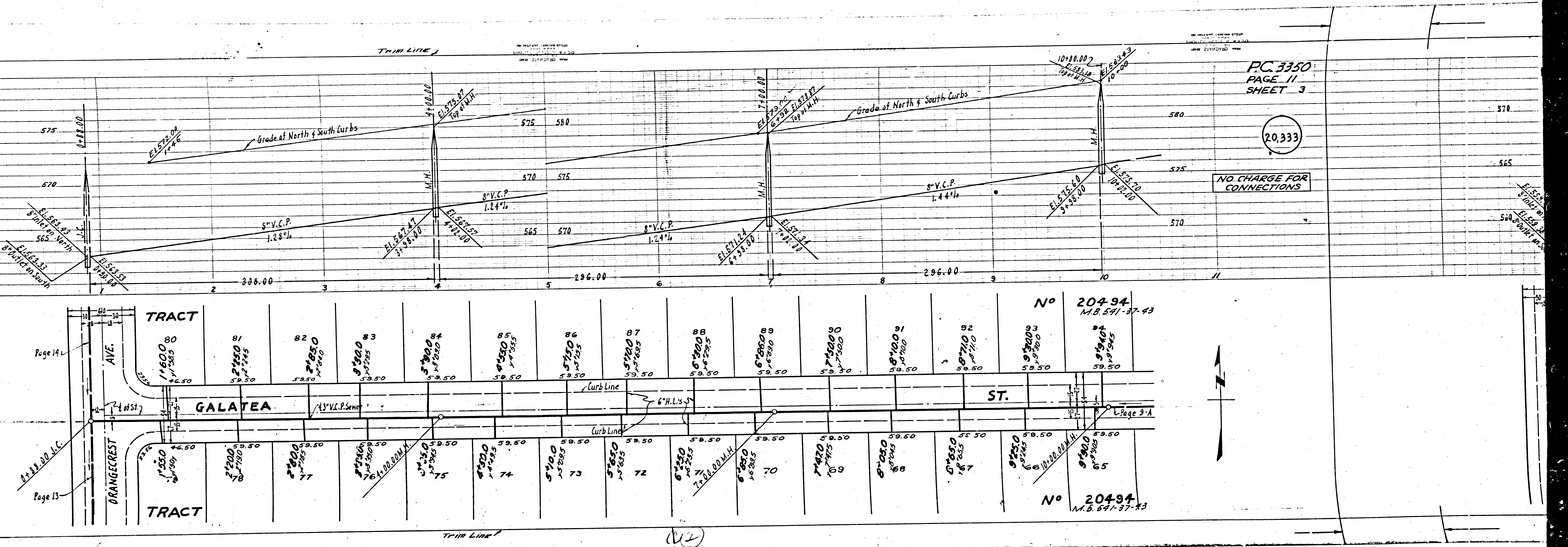
No 20494
M.B. 54-37-43
53

No 20494
M.B. 54-37-43
200



(B)

Page 1



PC 3350
PAGE 11
SHEET 3

20.333

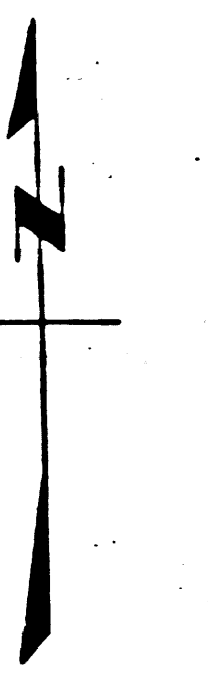
NO CHARGE FOR CONNECTIONS

No 20494
M.B. 571-37-43

No 20494
M.B. 571-37-43

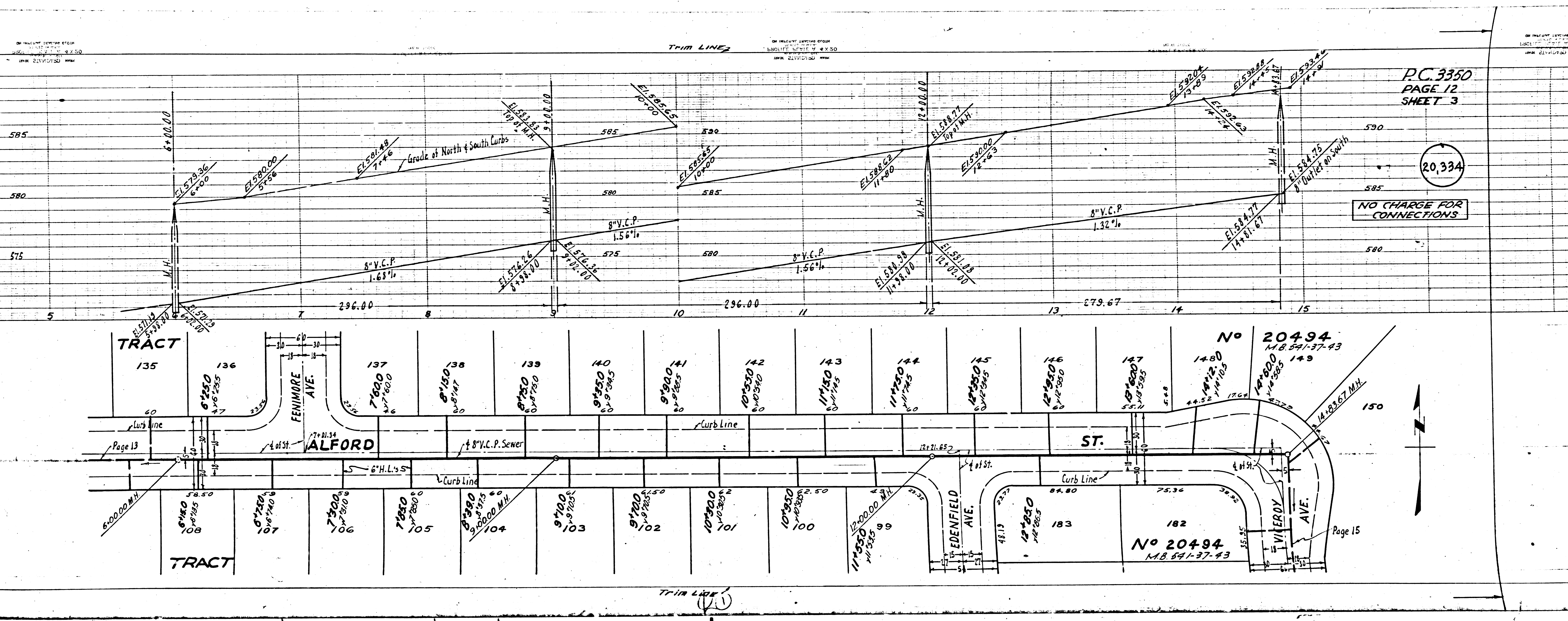
Page 14

Page 13



(12)

7C 3350



P.C. 3350
PAGE 12
SHEET 3

20,334
NO CHARGE FOR CONNECTIONS

No 20494
M.B. 541-37-43

No 20494
M.B. 541-37-43

Page 15

C.3350
PAGE 18
SHEET 5

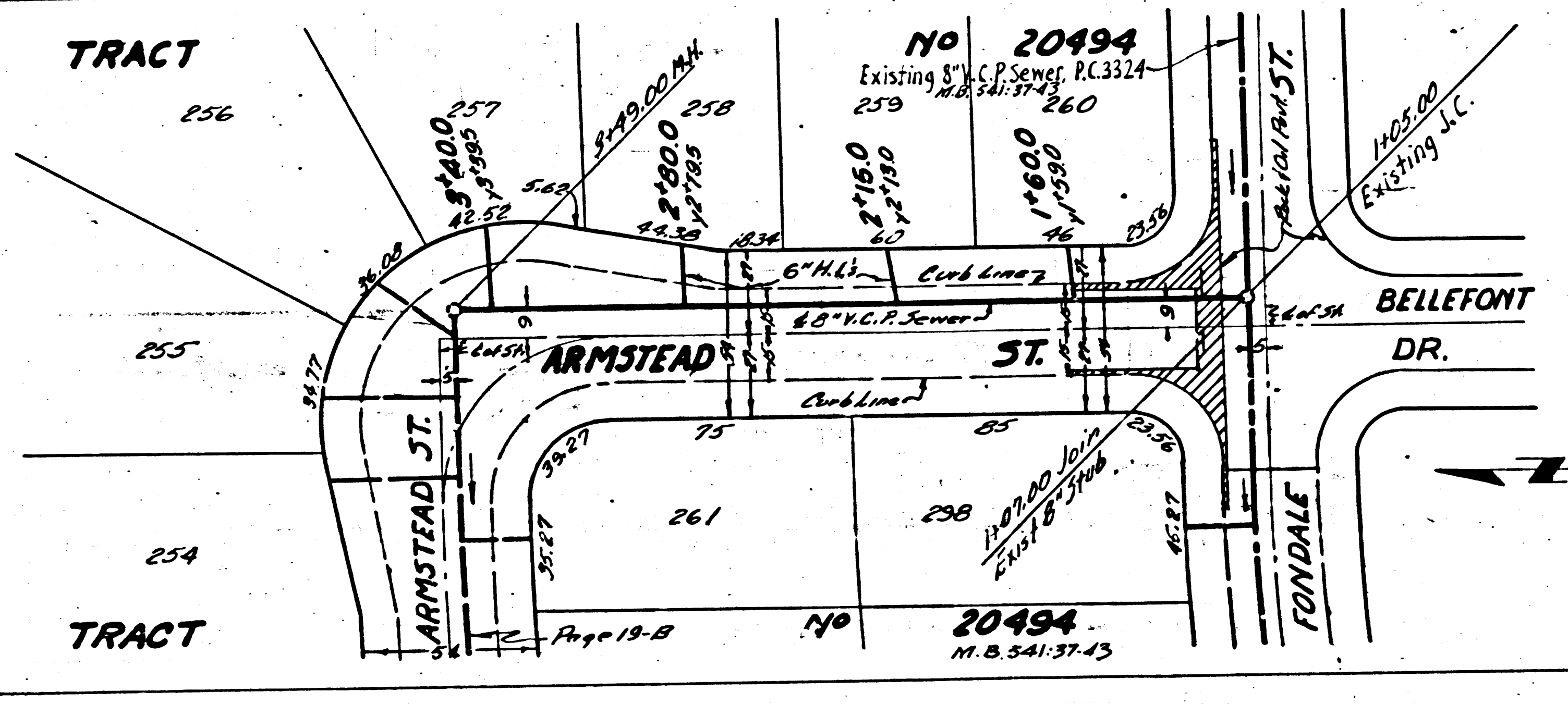
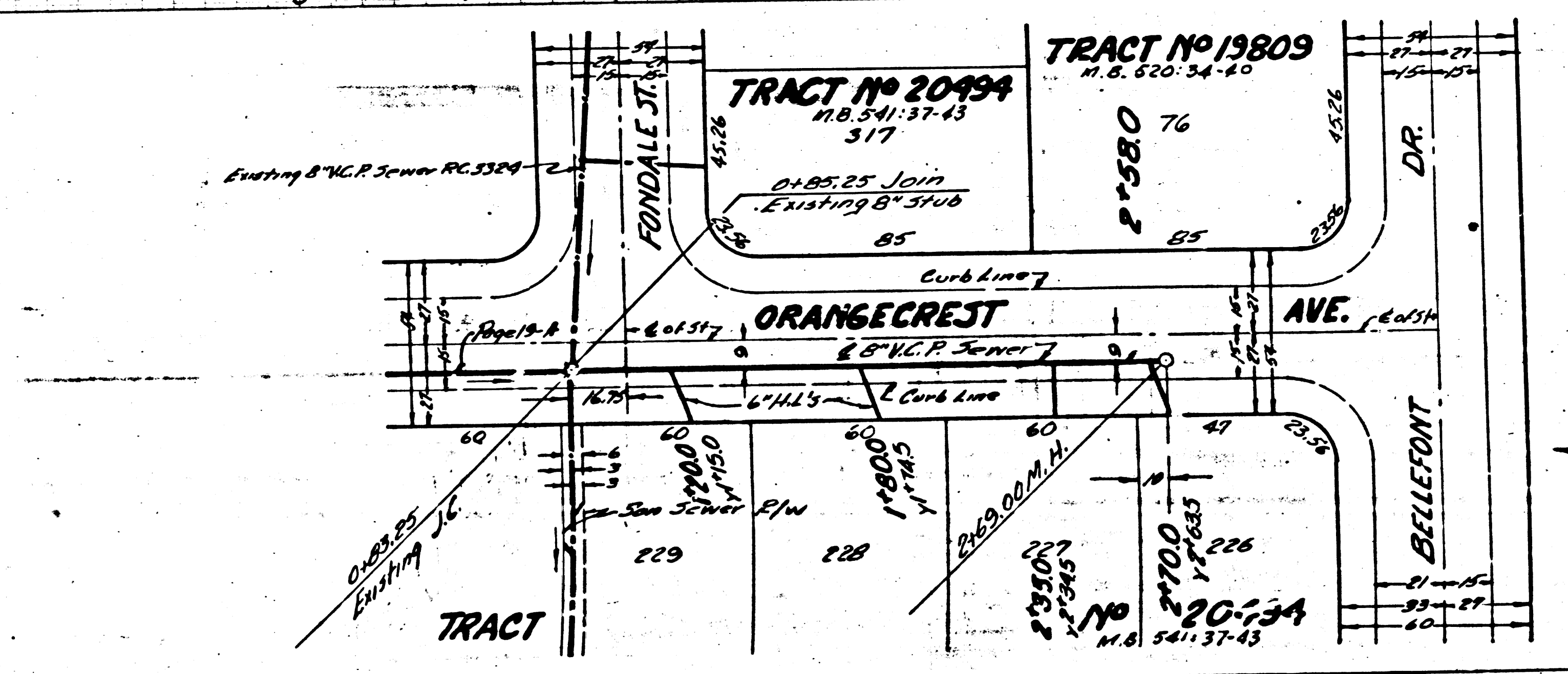
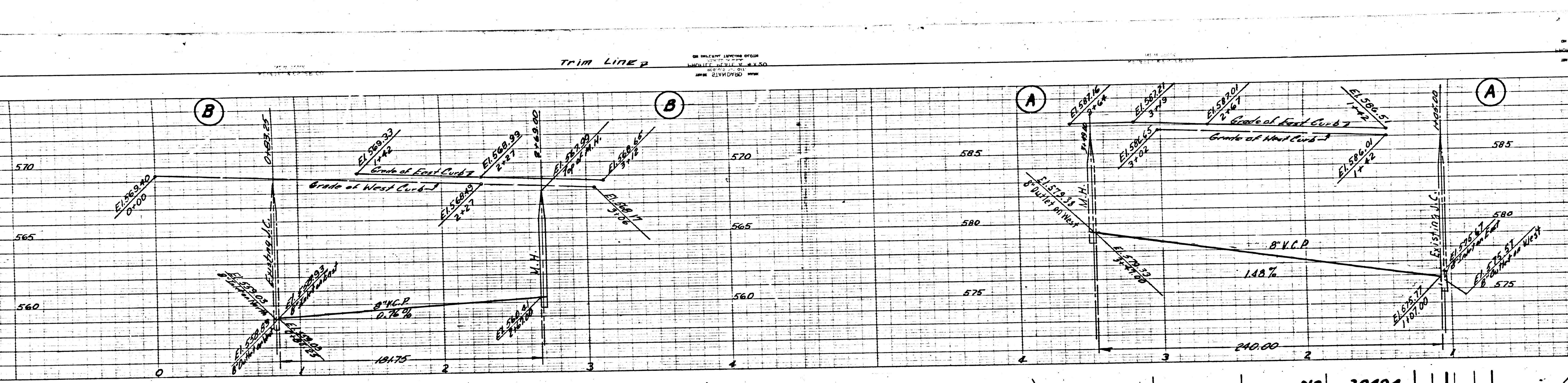
20,341

NO CHARGE
FOR CONNECTIONS

PC.3350
PAGE 18
SHEET 5

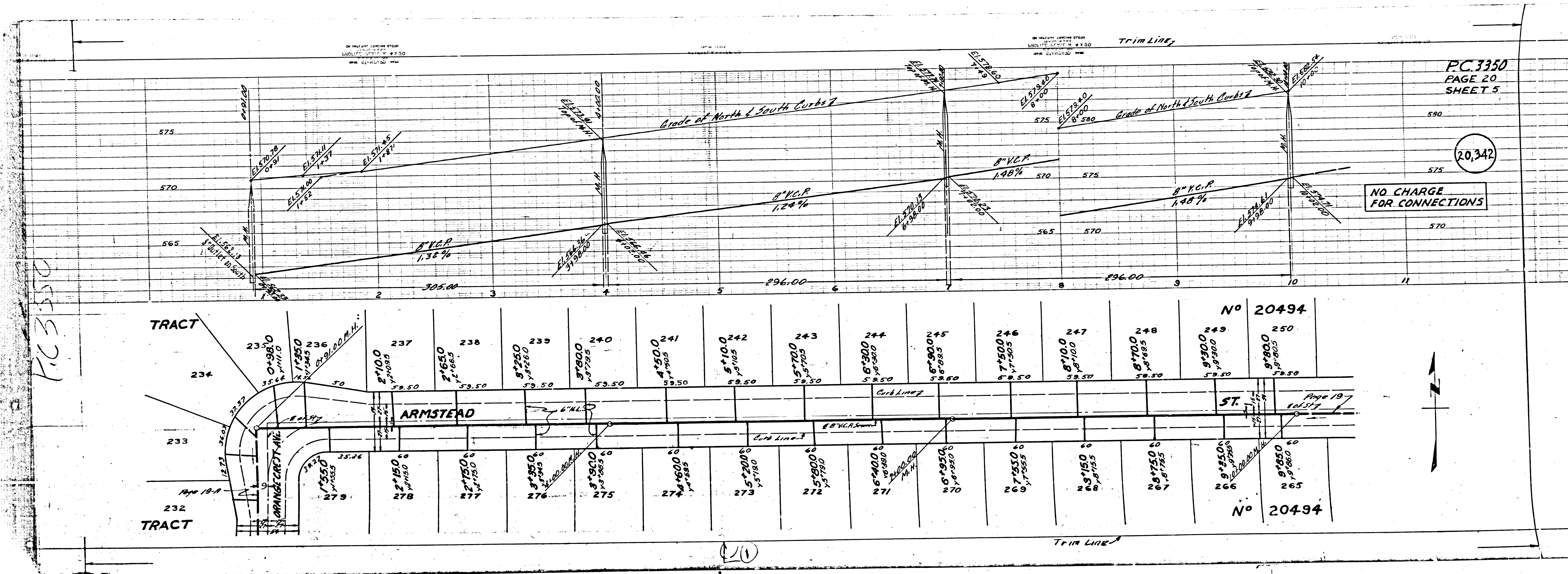
NO CHARGE
FOR CONNECTIONS

20,340



3

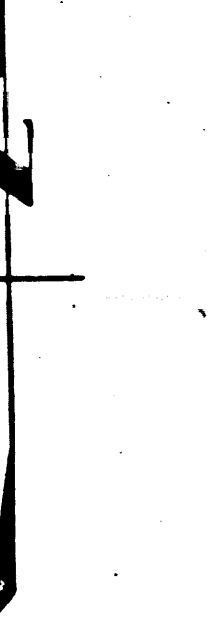
PC 3350



PC. 3350
PAGE 20
SHEET 5

20,342

NO CHARGE
FOR CONNECTIONS



20

C.3350
PAGE 14
SHEET 4

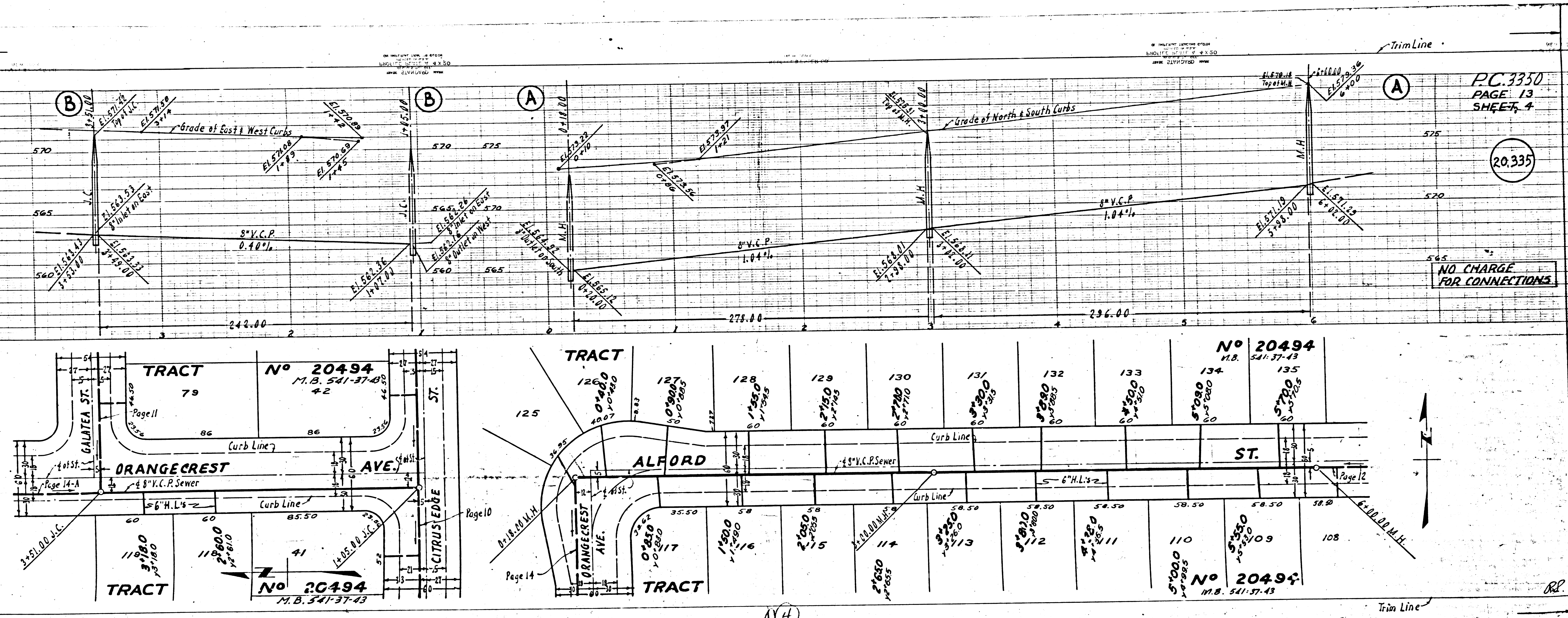
PC.3350
PAGE 13
SHEET 4

20.336

20.335

CHARGE
ON CONNECTIONS

NO CHARGE
FOR CONNECTIONS



PC. 3350
PAGE 15
SHEET 4

20,337

585

580

575

(B)

(B)

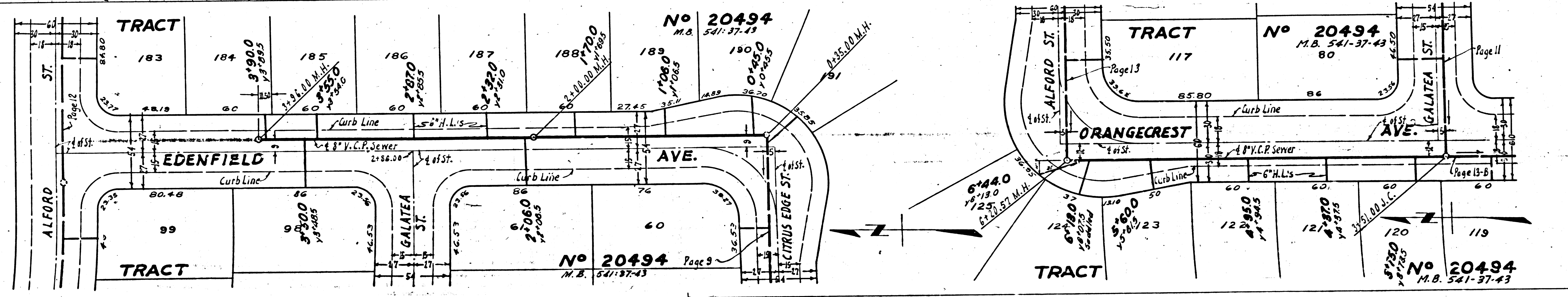
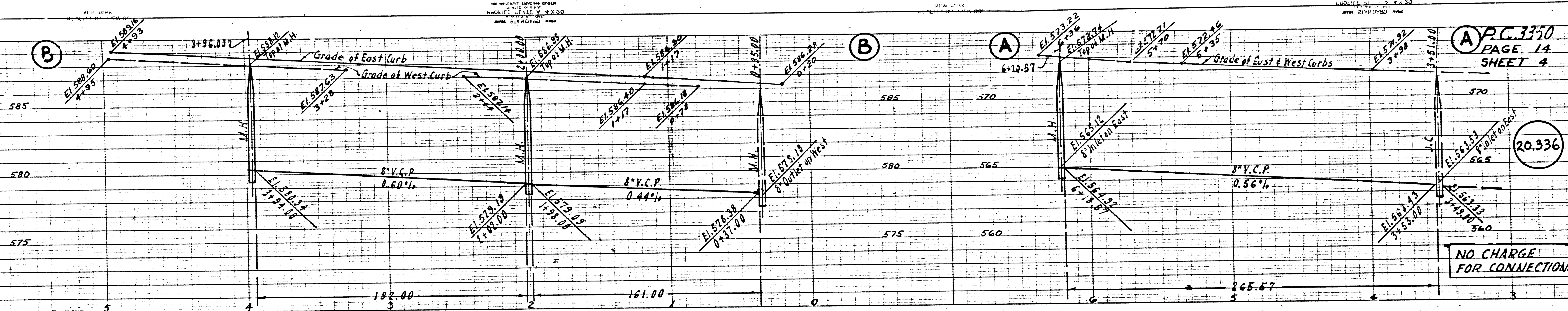
(A)

(A)

PC. 3350
PAGE 14
SHEET 4

20,336

NO. CHARGE
FOR CONNECTIONS



15

P.C.3350
PAGE 16
SHEET 4

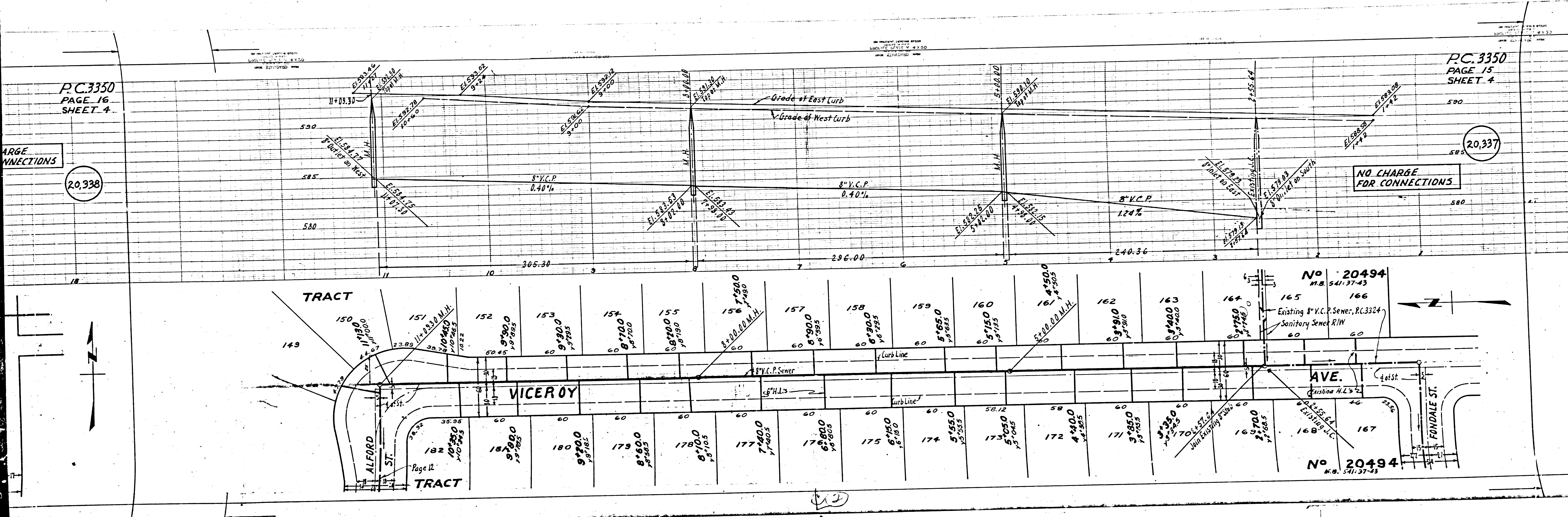
P.C.3350
PAGE 15
SHEET 4

LARGE
CONNECTIONS

20,338

NO CHARGE
FOR CONNECTIONS

20,337



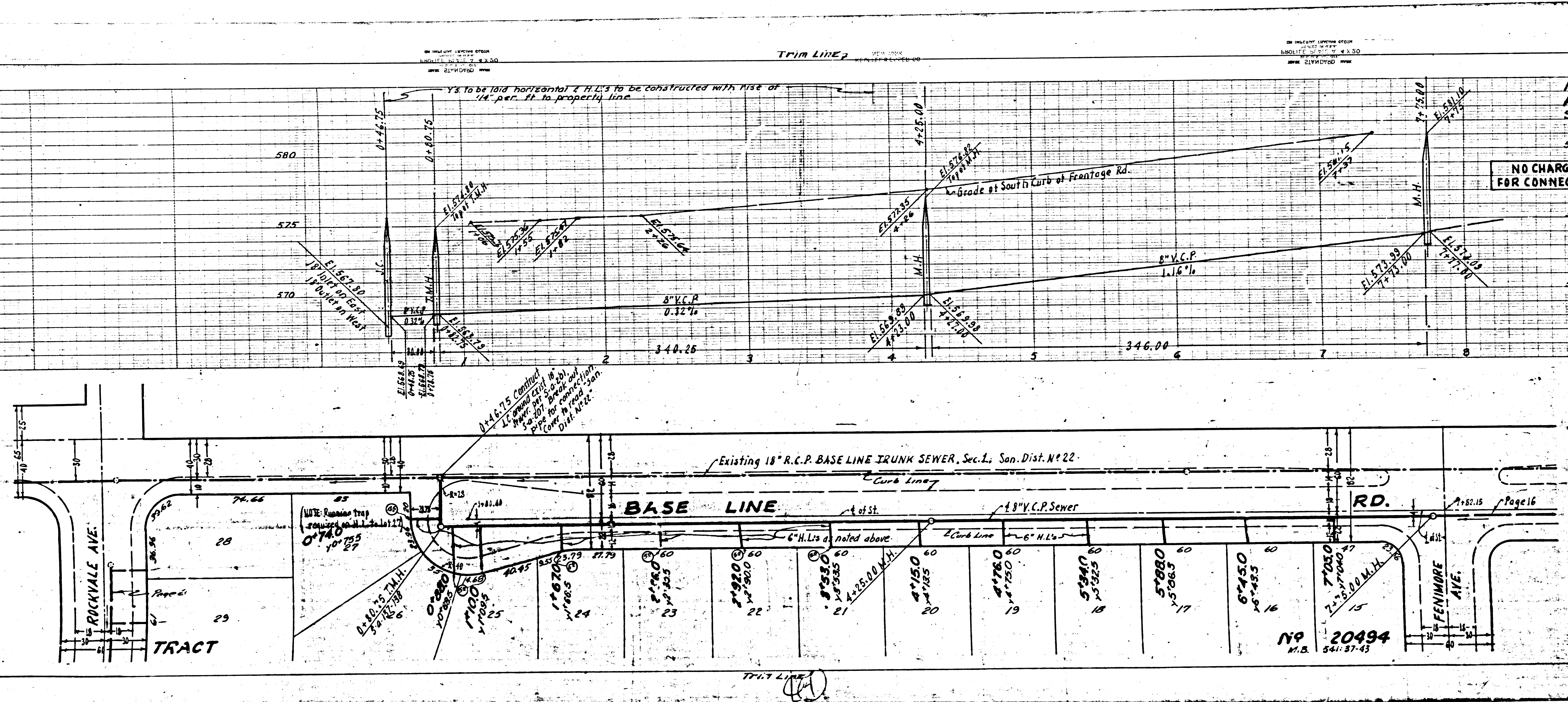
50
48
5
CTIONS
340

TRIM LINE 2

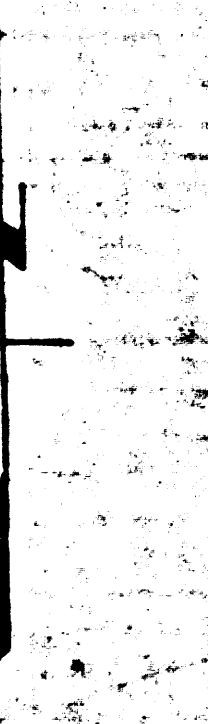
P.C. 3350
PAGE 17
SHEET 5

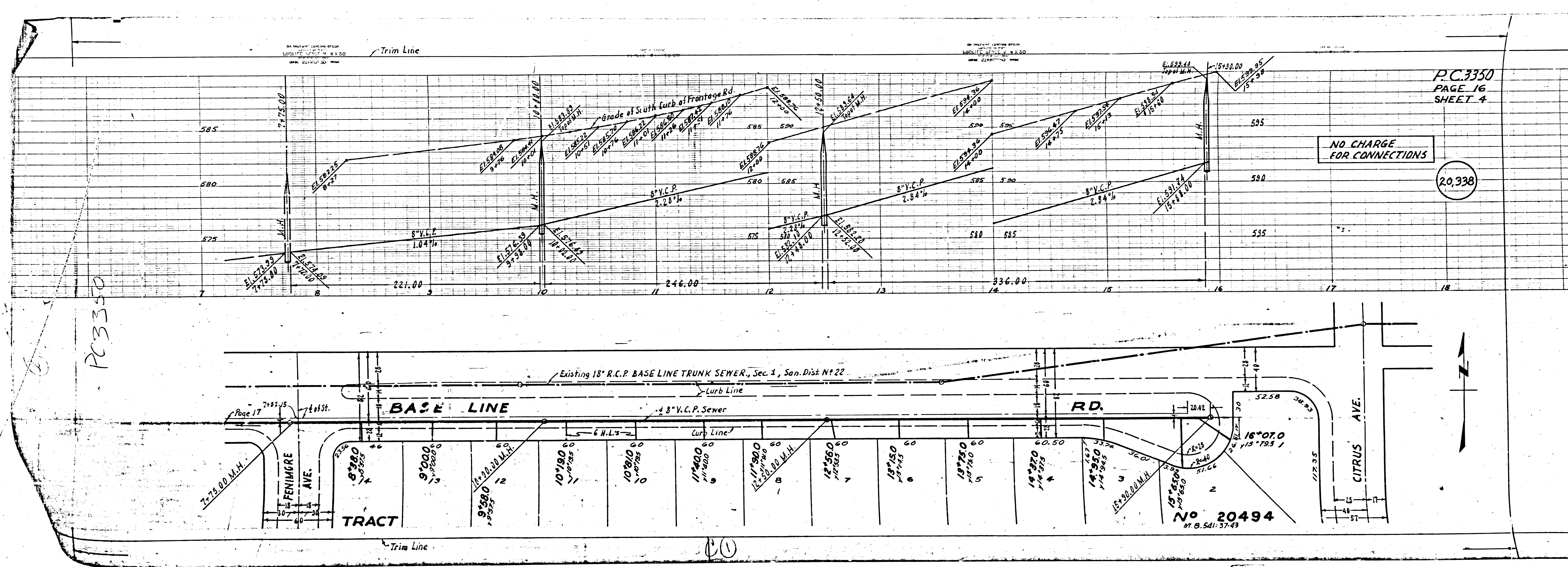
NO CHARGE
FOR CONNECTIONS

20,339



NP 20494
M.B. 541-87-43





PC 3350
PAGE 16
SHEET 4

NO CHARGE
FOR CONNECTIONS

20,338

PC 3350

No 20494
M.B. 541:37-43