

P.C. 3357

PAGE 2

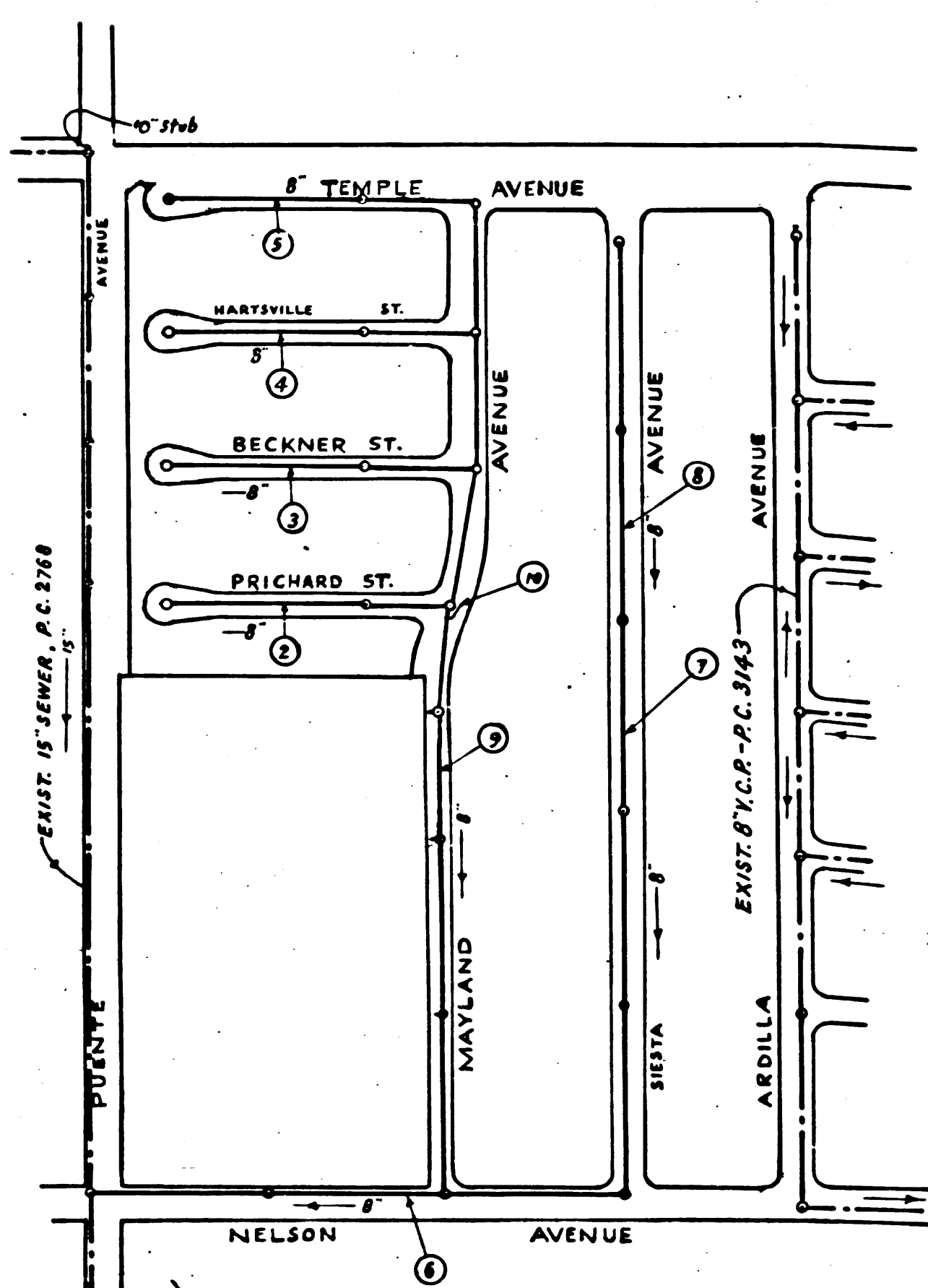
NO CHARGE FOR CONNECTIONS

20,361

105 H.C. 20530

104

TRACT



KEY MAP
SCALE: 1"=300'
P.C. 3357
TRACT NO. 20530

checked 5-12-55 [Signature]

Trim Line
PUENTE BUILDING DISTRICT NO. 2

NOTE:

- Provide stakes on the property lines or property lines produced at right angles to the sewer line at the center line of each manhole.
- No representative of the County Engineer will survey or layout any portion of the work.
- The owner or his authorized representative shall furnish the County Engineer with grade sheets and stations for all house laterals and Y branches and shall provide stations for them at their proper locations with stationing plainly marked. Any change in location shall be requested in writing by the owner or his representative.
- No revisions shall be made in these plans without the approval of the County Engineer.
1. Use standard manhole frames and covers, S-a-117.
 2. Use standard strength pipe except as noted.
 3. Use cement mortar for all vitrified clay pipe joints.
 4. Resurface all trench within paved area to meet L.A. County Road Dept. or California State Highway Dept. requirements in accordance with permit.
 5. Encase four feet of sewer at points of interference with poles, S-a-119.
 6. House laterals to be constructed with inverts at property line $\frac{1}{2}$ feet below curb grade except as noted.
 7. All structures shall be brick sewer structures, S-a-104.
 8. For allowable leakage test, use Formula No. 1, Spec's., Sec. 51.
 9. Manhole tops in unimproved Rights-Of-Way to be 6" above finish grade.

NOTE:
LOTS 1 THRU 29 INCLUSIVE SERVED BY H.L.'S. CONSTRUCTED ON P.C. 3143.-B

SHEET	PAGES
1	1-5
2	6-10

REVISED OUTLET FOR TEMPLE AVE., HARTVILLE ST., BECKNER ST., AND PRICHARD ST.
APPROVED [Signature]
OFFICE OF COUNTY ENGINEER, REG. C. E. NO. 2386

B.M. No. 30-1085 ELEV. 314.130
Lead and Brass Nail in S.E. cor. of Cont. Base of Pump Manhole, 45' E. of E. of York St. and 85' E. West of E. of Pointe Ave.

COLLECT CHARGE AS INDICATED.
[Signature] 3-24-55

PROFILE, ALIGNMENT AND GRADE OF
SANITARY SEWERS
TO BE CONSTRUCTED IN

TRACT NO. 20530

PRIVATE CONTRACT NO. 3357
W. S. 46
2 SHEETS

Scale: VERT. 1"=4'
HORIZ. 1"=40'
JAN, 1955.
PREPARED IN THE OFFICES OF
HAROLD M. TEGART

[Signature]
Reg. C. E. No. 2351
FOR LEGEND SEE PLAN NO. S-a-64

NOTE:
Grades to which this improvement is to be constructed are shown on plans and profiles. Grade points for top of curbs, center line of streets, or center line of alleys are shown by circles on profiles. At all points between designated points the grade shall be established so as to conform to a straight line drawn between said designated points.
Elevations are in feet above U.S.G.S. datum or mean sea level.
This drawing and the data hereon are hereby made a part of the specifications.
Work shall be constructed according to specifications on file in the office of the County Engineer and shall be prosecuted only in the presence of the County Engineer.
Before work can be started, the contractor must obtain a permit to excavate in County streets from the L.A. County Road Dept., 108 W. 2nd St. and make a deposit with the County Engineer, 733 L.A. County Engineering Building, sufficient to cover the cost of construction inspection and record plans.
Approval of this plan by the County of Los Angeles does not constitute a representation as to the accuracy of the location of or the existence or non-existence of any underground utility, pipe, or structure within the limits of this project. This note applies to all sheets.
If work is to be done in a State Highway, a permit must be obtained from the State of California, Division of Highways, 120 South Spring Street.

COUNTY OF LOS ANGELES, CALIFORNIA
Approved, William J. Fox, County Engineer
Approved, A. M. Rawn
CHIEF ENGINEER, SAN. DIST. NO. 15
[Signature]
[Signature]
Checked by: [Signature] 3-24-55
Office of County Engineer, Reg. C. E. No. 786-D

P.C. 3357
PAGE 1

20,360

(10)

8270

P.G. 3357

PAGE 3

NO CHARGE FOR CONNECTIONS

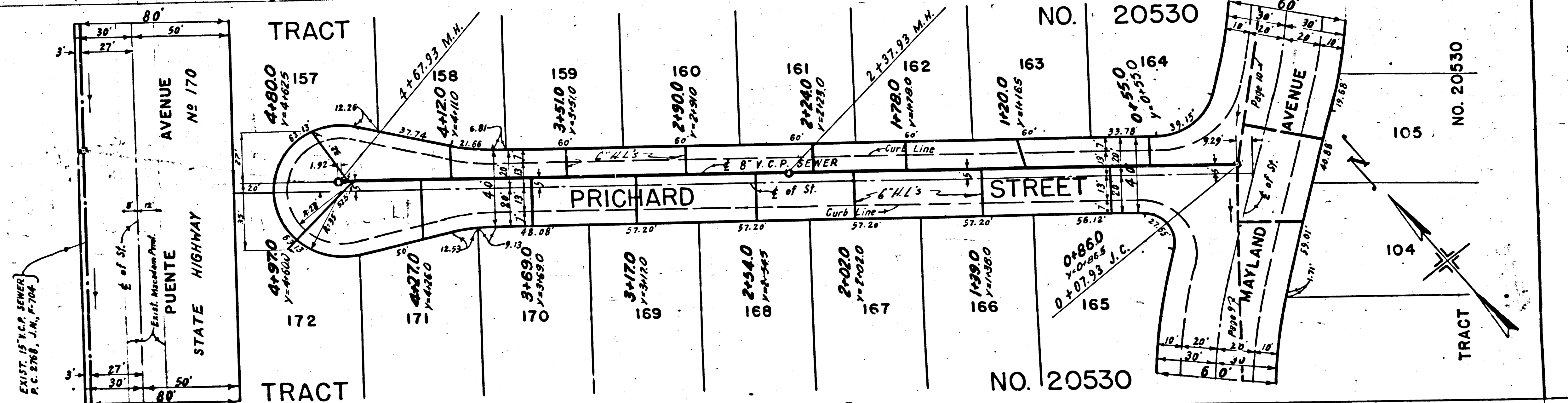
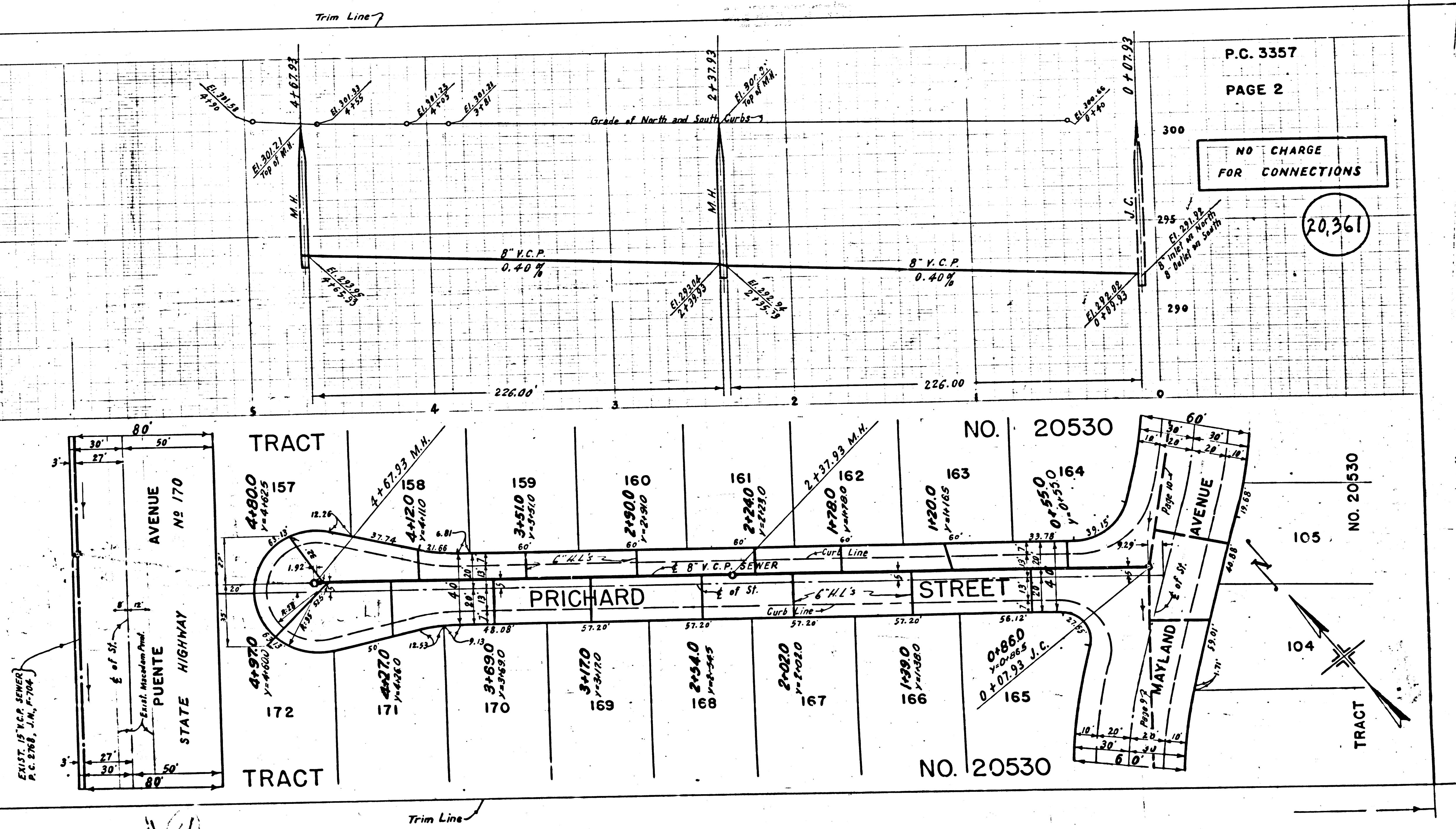
20,362

300
295
290

P.C. 3357
PAGE 2

NO CHARGE FOR CONNECTIONS

20,361

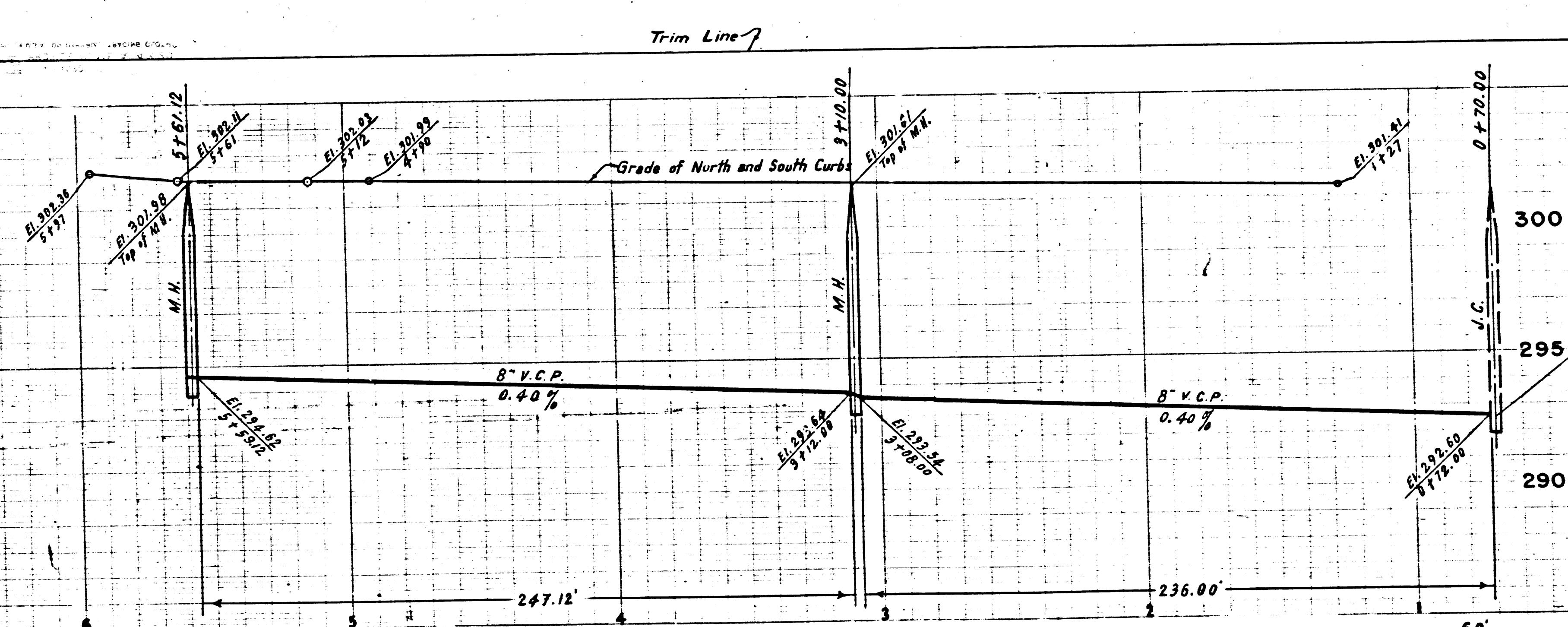


P.C. 3357
PAGE 4

NO CHARGE
FOR CONNECTIONS

20,363

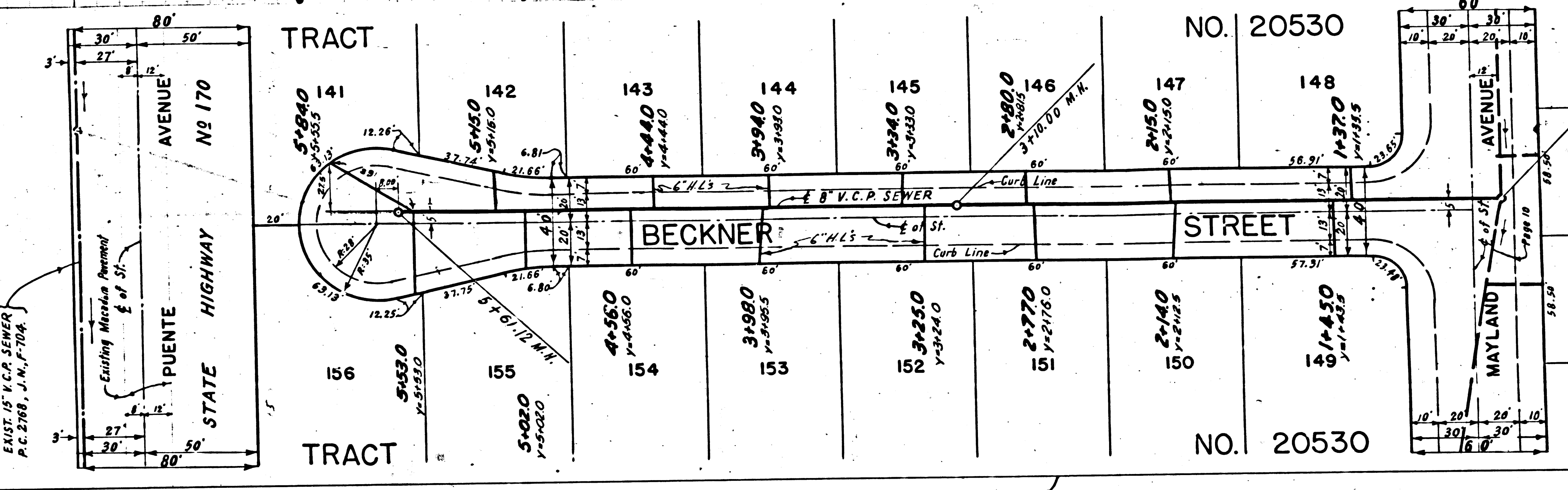
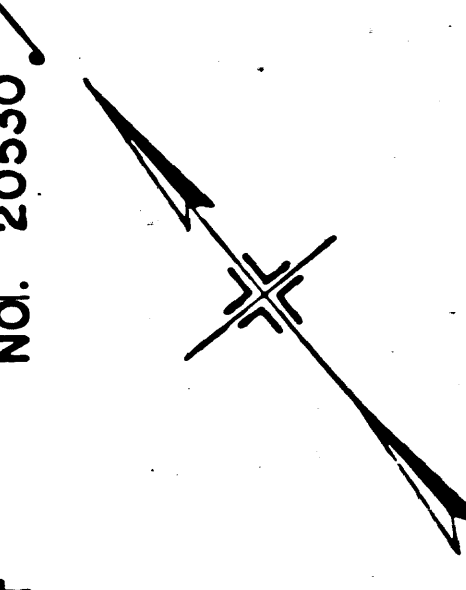
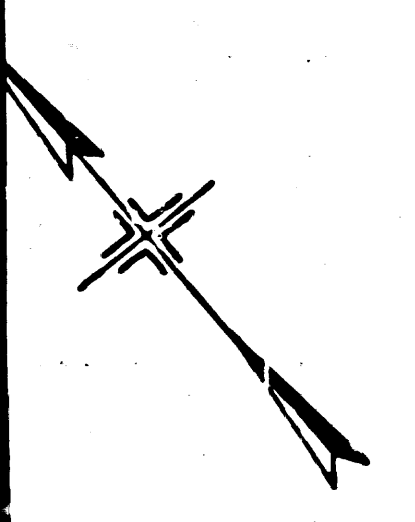
300
295
290



P.C. 3357
PAGE 3

NO CHARGE
FOR CONNECTIONS

20,362



X (S)

Trim Line

P.C. 3357
PAGE 5

NO CHARGE
FOR CONNECTIONS

20,364

P.C.
PAGE
NO CH
FOR CON

