

360
2
E
FOR
IONS

PAGE
TRIM
LINE

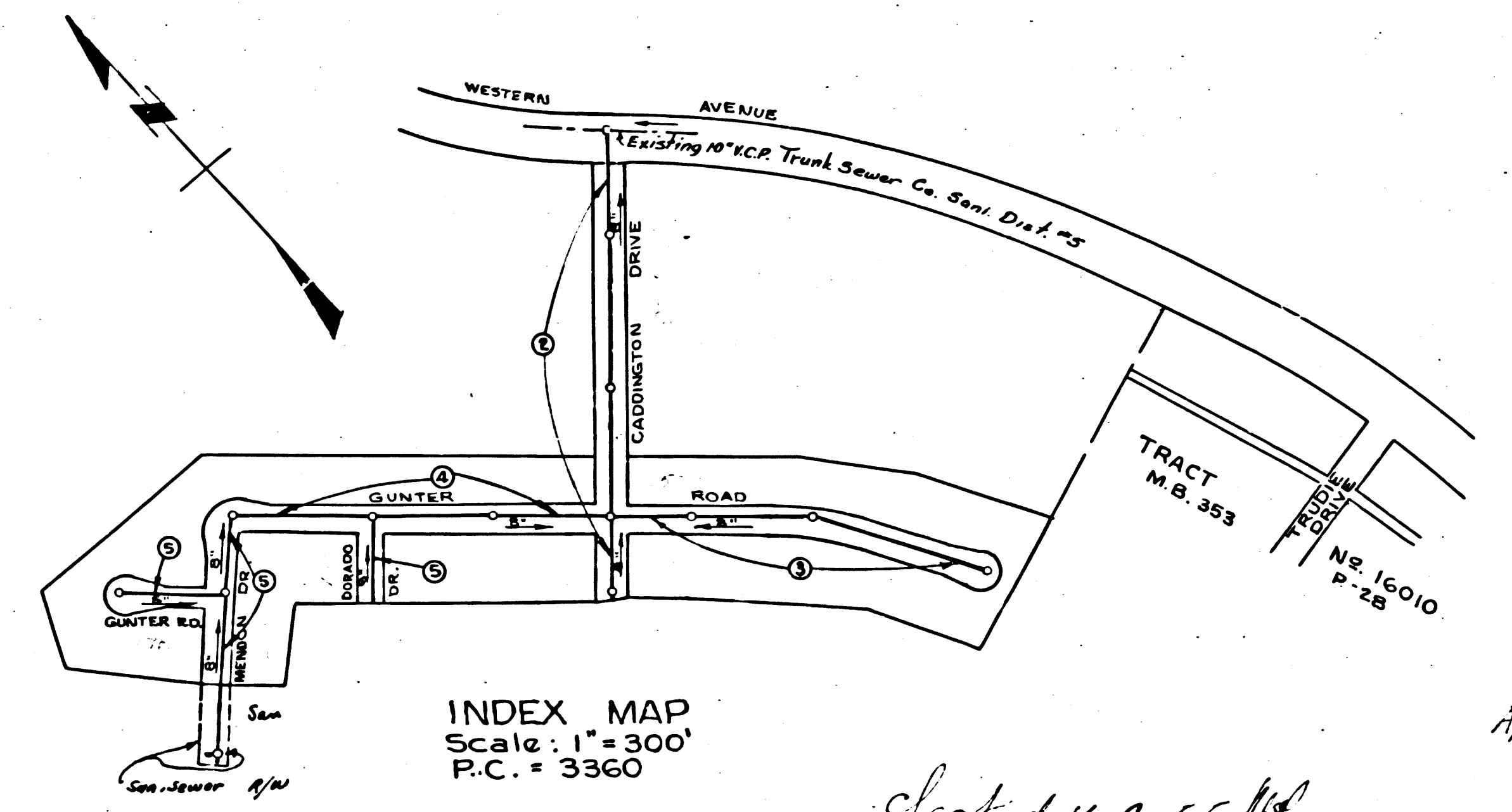
PAGE
TRIM
LINE

Trim Line
LOMITA BLDG. DIST. NO 74

- NOTE:**
Provide stakes on the property lines or property lines produced at right angles to the sewer line at the center line of each manhole.
No representative of the County Engineer will survey or layout any portion of the work.
The owner or his authorized representative shall furnish the County Engineer with grade sheets and stations for all house laterals and Y branches and shall provide stakes for them at their proper locations with stationing plainly marked. Any change in location shall be requested in writing by the owner or his representative.
No revisions shall be made in these plans without the approval of the County Engineer.
1. Use standard manhole frames and covers, S-a-117.
 2. Use standard strength pipe except as noted.
 3. Use cement mortar for all vitrified clay pipe joints, except as noted.
 4. Resurface all trench within saved area to meet L.A. County Road Dept. or California State Highway Dept. requirements in accordance with permit.
 5. Encase four feet of sewer at points of interference with poles, S-a-119.
 6. House laterals to be constructed with inverts at property line _____ feet below curb grade except as noted.
 7. All structures shall be brick sewer structures, S-a-104, except as noted.
 8. For allowable leakage test, use Formula No. _____, Spec's., Sec. 51.
 9. Manhole tops in unimproved Rights-Of-Way to be 6" above finish grade.

Before breaking into any existing structure and before final acceptance of this work, County Sanitation District should be notified in order that inspection may be made.

L.A. Co. Surveyors B. M. 35-C, F.B. 1356 pg. 12. SAN PEDRO, ON APPROX. Q. OF WESTERN AVE. ABOUT 56 FT. N. OF CHANNEL DRIVE, IN PAINTED PEDESTRIAN CROSS WALK, A 7/8" HEXAGON MARK SET IN CONCRETE, 8 INCHES BELOW THE SURFACE AND PROTECTED BY A CAST IRON COVER MARKED "CITY L.A. MONUMENT ENGINEERING" WITH "S.P.H.P.G.A." PAINTED ON PAVEMENT, 1953. Adj. Elev. 297.161



| SHEET | PAGES |
|-------|-----------|
| 1 | 1-5 incl. |

NO CHARGE FOR CONNECTIONS
L. Carter 3-16-55

Revision Approved:
Page 5 - Revised Sewer grade, Madon Dr., Sta. 2147.30 to Sta. 5757.21
Approved: R.E. Williams 4-17-55
Office of San. Engineer, Reg. C.E. 7860

Revision Approved:
Pages 4 & 5: Proposed Storm Drain shown at Intersection of Dorado Dr. & Gunter Rd.
Approved: 4-4-55
Office of Co. Engr - Reg. C.E. 7860

Checked 11-7-55 W. Green

PROFILE, ALIGNMENT AND GRADE OF
SANITARY SEWERS
TO BE CONSTRUCTED IN

TRACT NO. 20880

PRIVATE CONTRACT NO. 3360
W. S. 2B

1 SHEET
Scale: VERT. 1"=5'
HORIZ. 1"=40'
Feb. 1955
PREPARED IN THE OFFICES OF

Edmund J. Espinosa
Reg. C. E. No. 5828

FOR LEGEND SEE PLAN NO. S-a-64

NOTE:
Grades to which this improvement is to be constructed are shown on plans and profiles. Grade points for top of curbs, center line of streets, or center line of alleys are shown by circles on profiles. At all points between designated points the grade shall be established so as to conform to a straight line drawn between said designated points.
Elevations are in feet above U.S.G.S. datum or mean sea level.
This drawing and the data hereon are hereby made a part of the specifications.
Work shall be constructed according to specifications on file in the office of the County Engineer and shall be prosecuted only in the presence of the County Engineer.
Before work can be started, the contractor must obtain a permit to excavate in County streets from the L.A. County Road Dept., 108 W. 2nd St. and make a deposit with the County Engineer, Room 324, 253 South Broadway sufficient to cover the cost of construction inspection and record plans.
Approval of this plan by the County of Los Angeles does not constitute a representation as to the accuracy of the location of or the existence or non-existence of any underground utility, pipe, or structure within the limits of this project. This note applies to all sheets.
If work is to be done in a State Highway, a permit must be obtained from the State of California, Division of Highways, 120 South Spring Street.

COUNTY OF LOS ANGELES, CALIFORNIA
Approved, William J. Fox, County Engineer
Approved, A. M. Rawn
CHIEF ENGR. CO. SAN DIST. NO. 5
By: *A.P. Collins* Sanitation Engineer
By: *J. Paethmann* Office Engineer
Checked by: *J.K. Wade 3-17-55*
Office of County Engineer, Reg. C. E. No. 9406

P.C. 3360
PAGE 1

DOUBLE SCALE

21,701

TRACT NO. 20880

3-3-58-3095

P.C. 3360

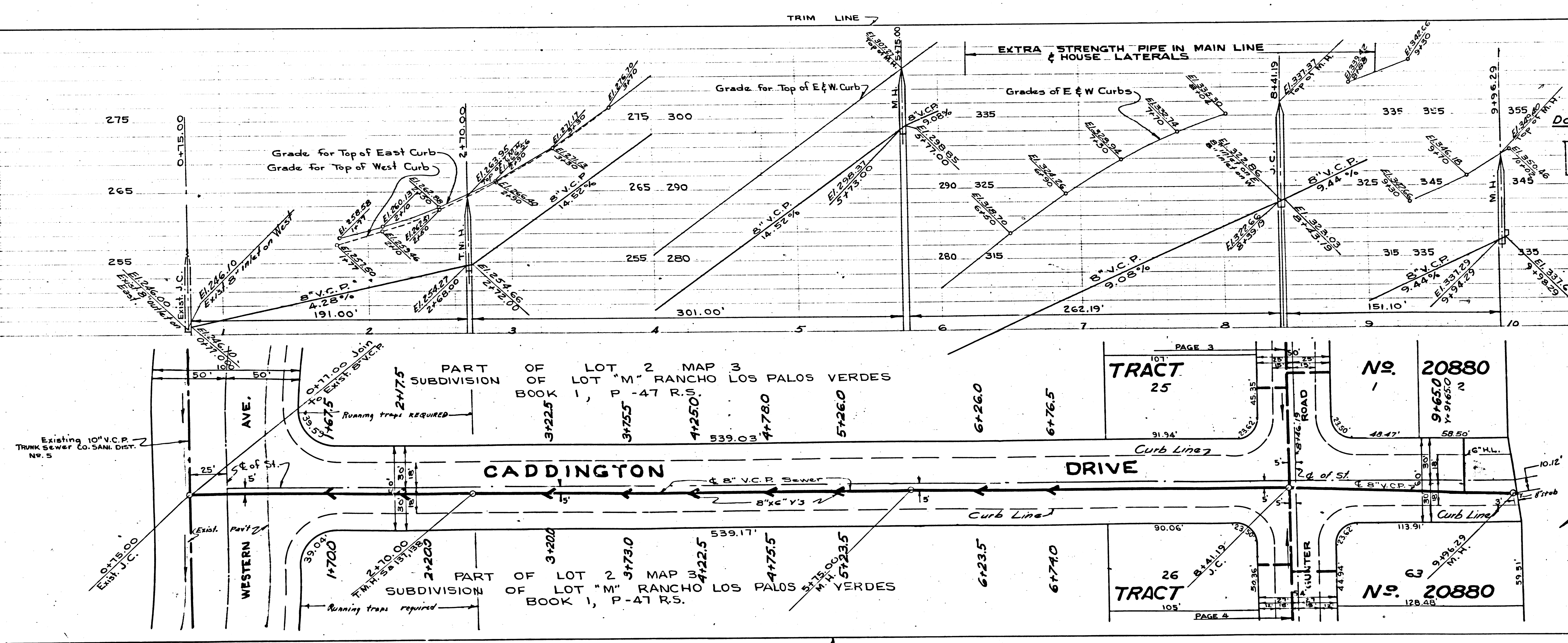
2176

DOUBLE SCALE
NO CHARGE FOR CONNECTIONS

21,703

DOUBLE SCALE
NO CHARGE FOR CONNECTIONS

21,702



DOUBLE SCALE

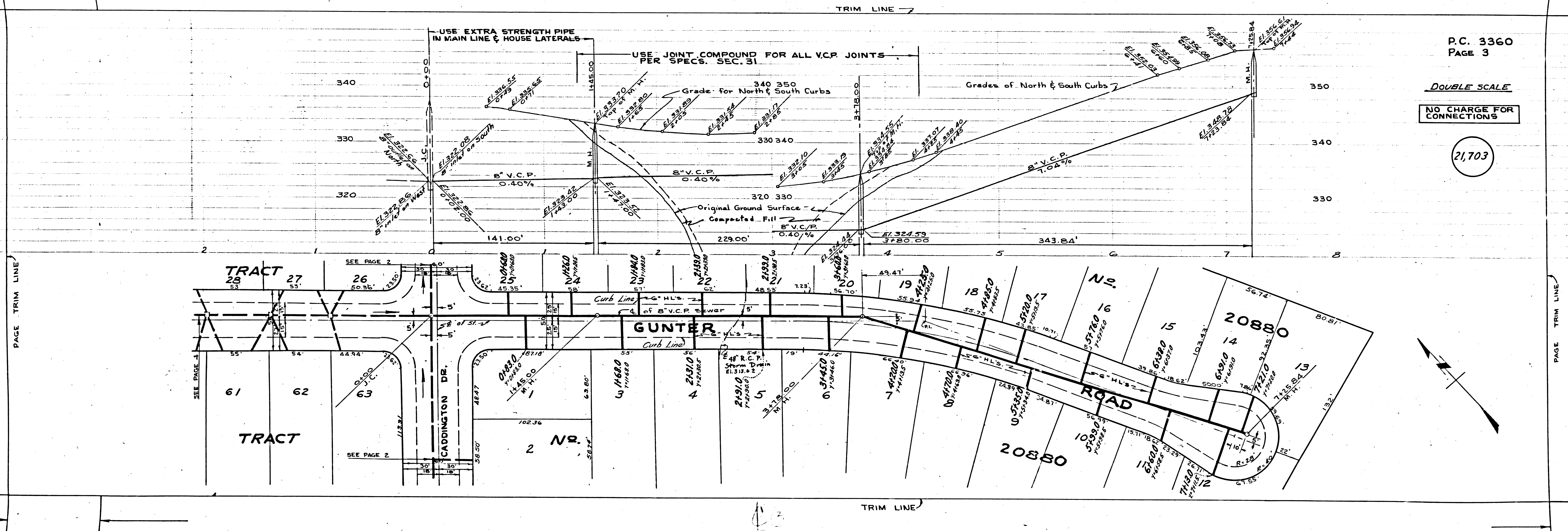
NO CHARGE FOR CONNECTIONS

21,704

DOUBLE SCALE

NO CHARGE FOR CONNECTIONS

21,703



P.C. 3360
PAGE 5

DOUBLE SCALE

NO CHARGE FOR CONNECTIONS

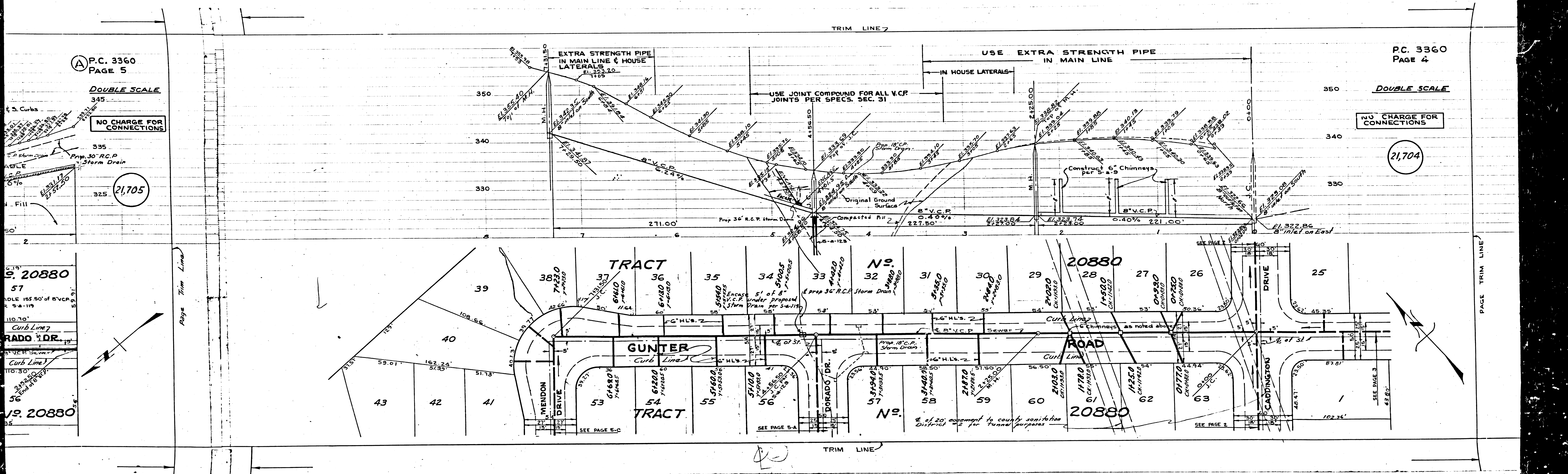
21,705

P.C. 3360
PAGE 4

DOUBLE SCALE

NO CHARGE FOR CONNECTIONS

21,704



S. 20880
57
ADLE 155.50' of 8\"/>

110.70'
Curb Line 7
DORADO DR.
Curb Line 1
110.30'
2.25' 50'
End at 15' 10\"/>

S. 20880
55

PAGE TRIM LINE

TRIM LINE

TRIM LINE 7

2 of 20' easement to county sanitation
District #2 for tunnel purposes

SEE PAGE 5-C

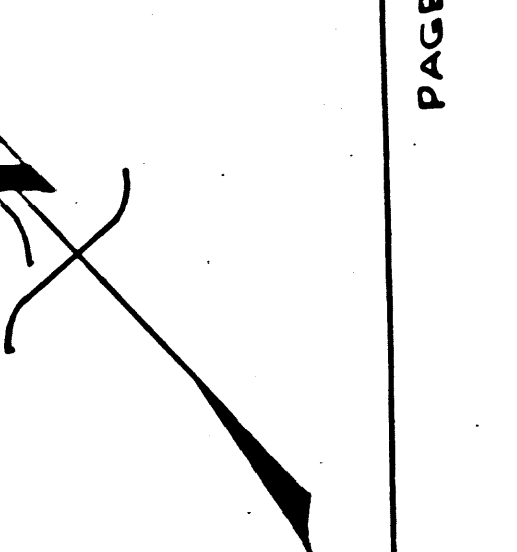
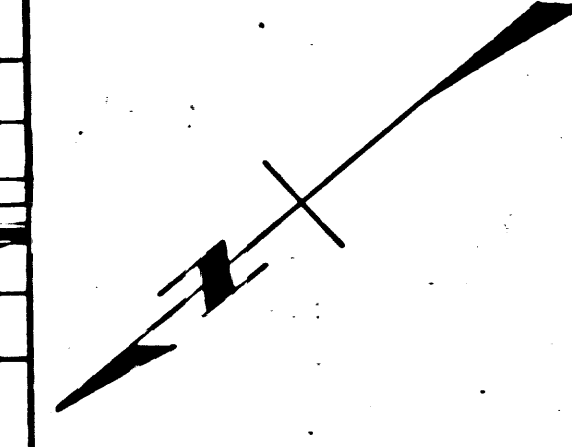
SEE PAGE 5-A

SEE PAGE 2

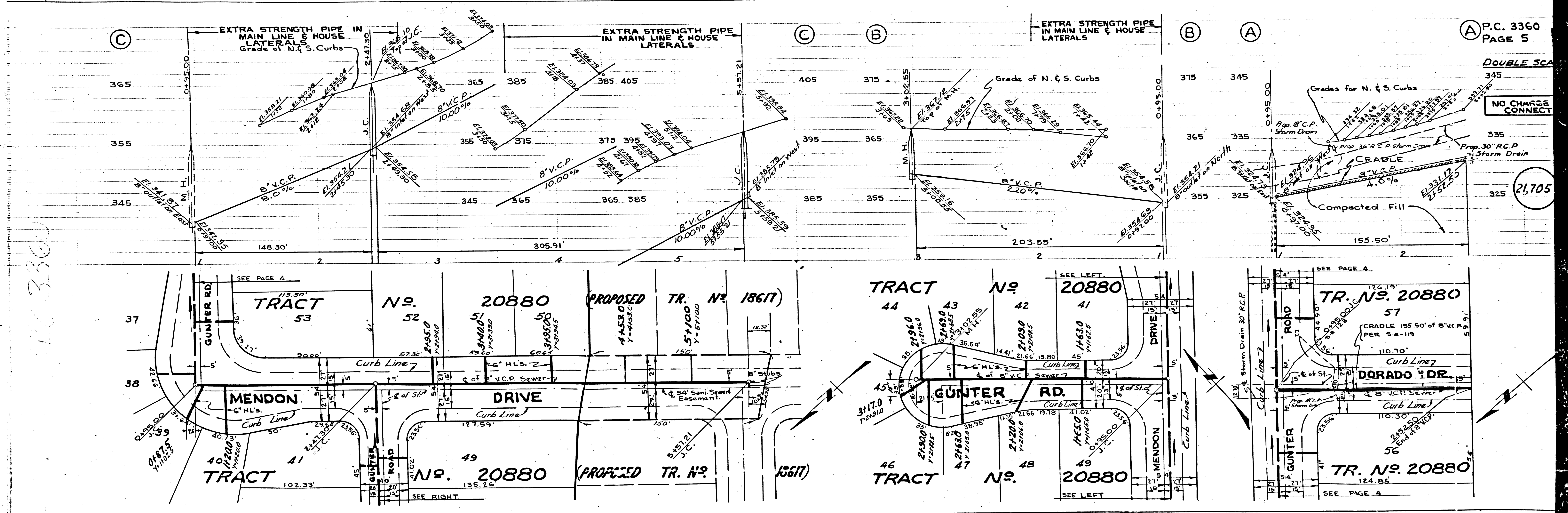
SEE PAGE 1

SEE PAGE 3

Page Trim Line



Trim Line 7



PC 3360

DOUBLE SCALE

NO CHARGE CONNECT

21,705

Trim Line 7