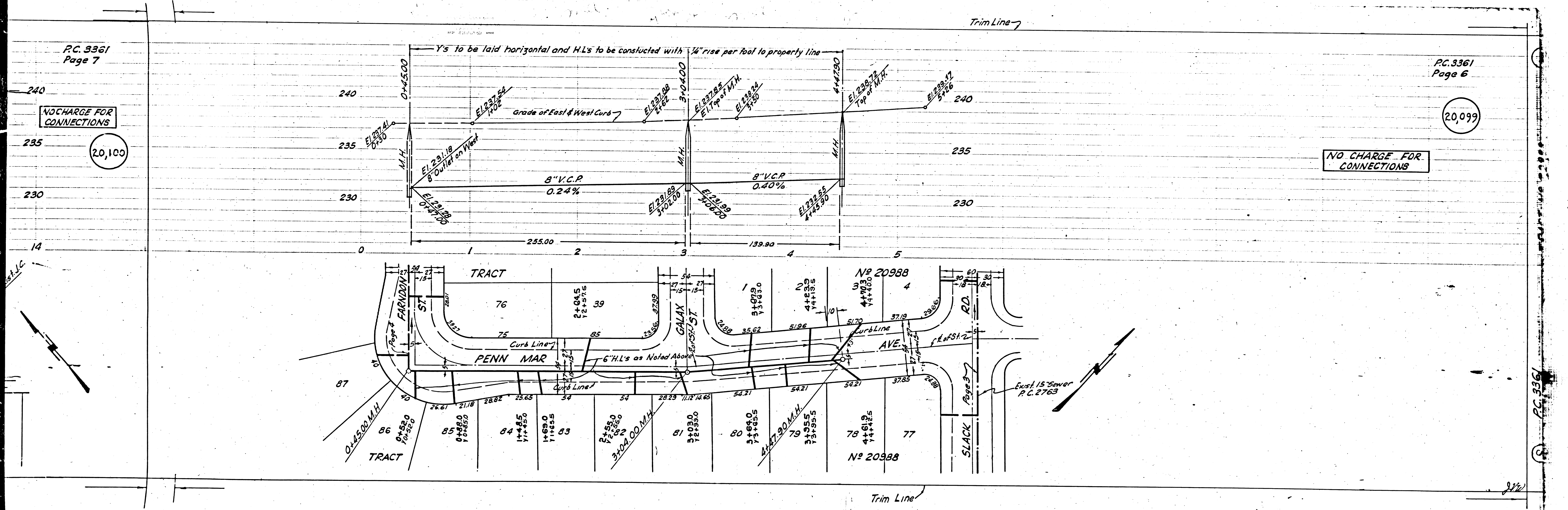


NO CHARGE FOR  
CONNECTIONS

NO CHARGE FOR  
CONNECTIONS

20,099



P.C. 3361

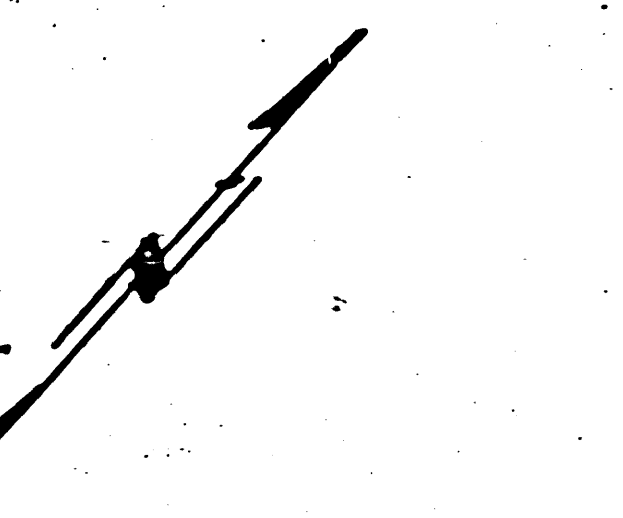
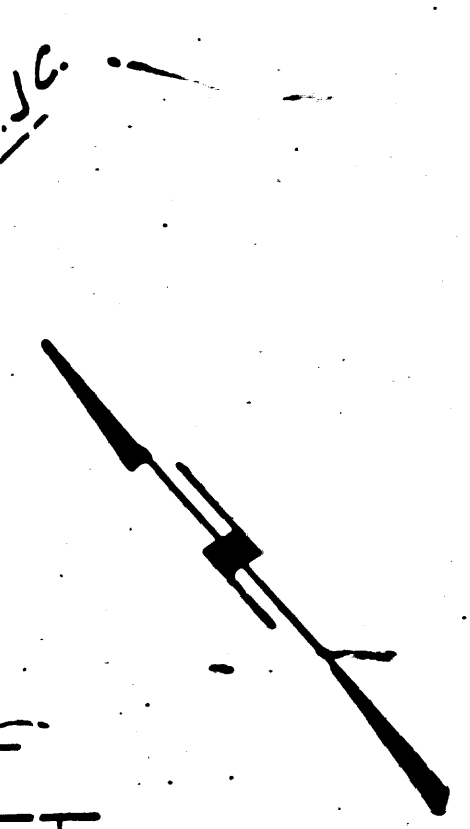
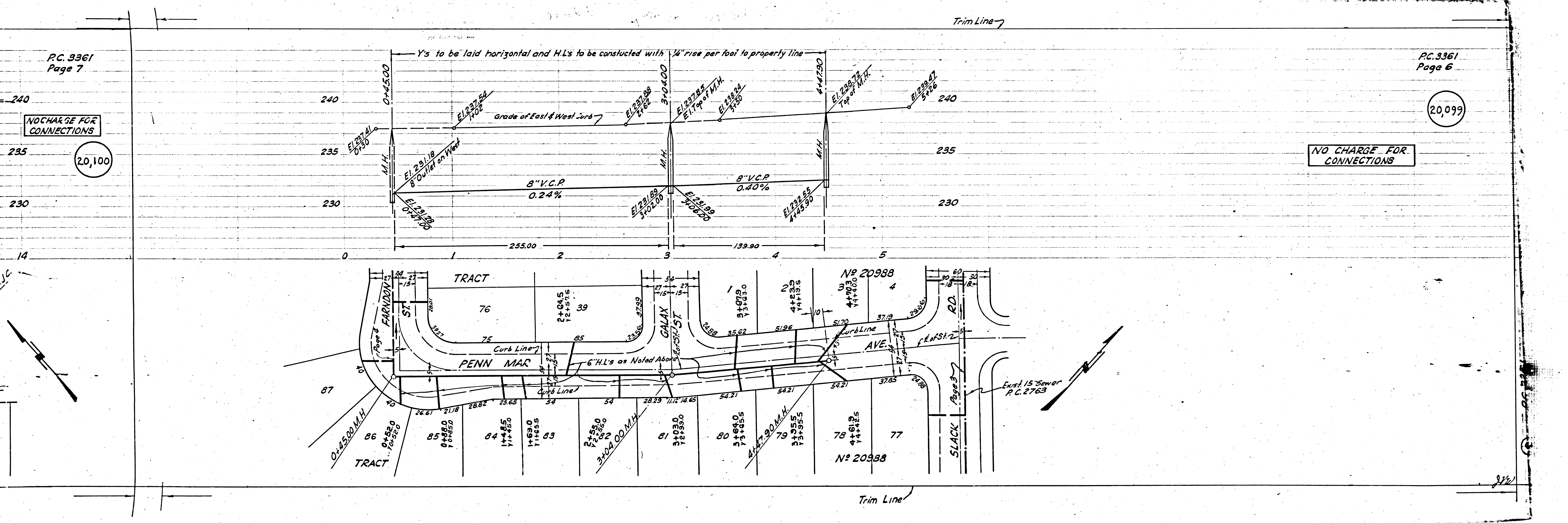
2/2

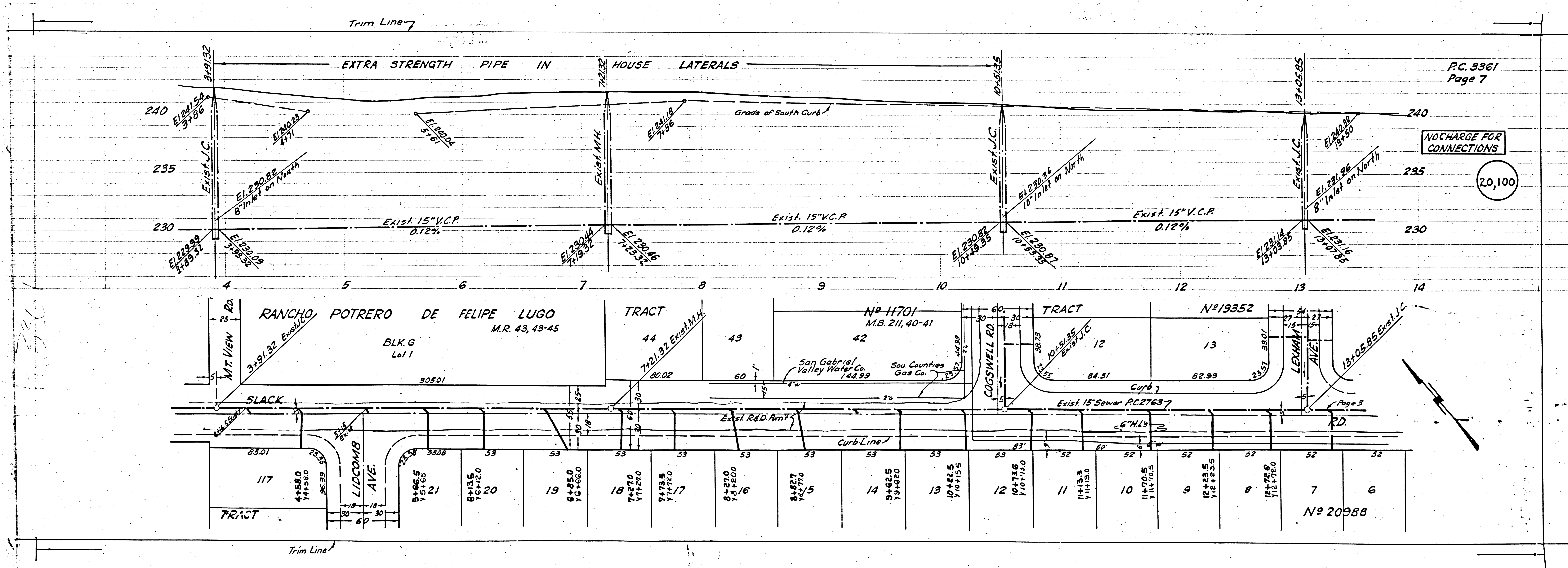
NO CHARGE FOR CONNECTIONS

NO CHARGE FOR CONNECTIONS

20,100

20,099





P.C. 3361  
Page 7

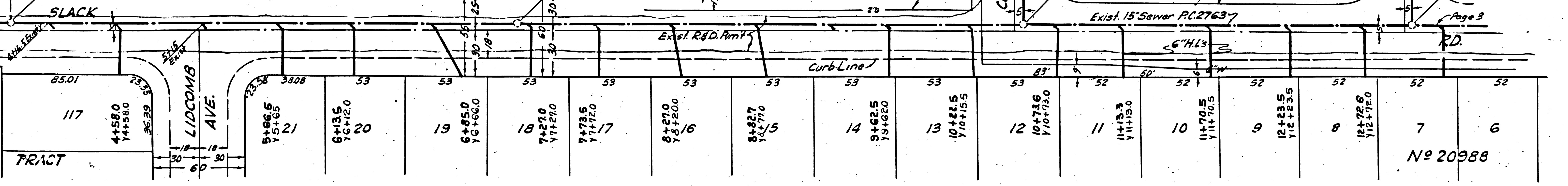
NO CHARGE FOR CONNECTIONS

20,100

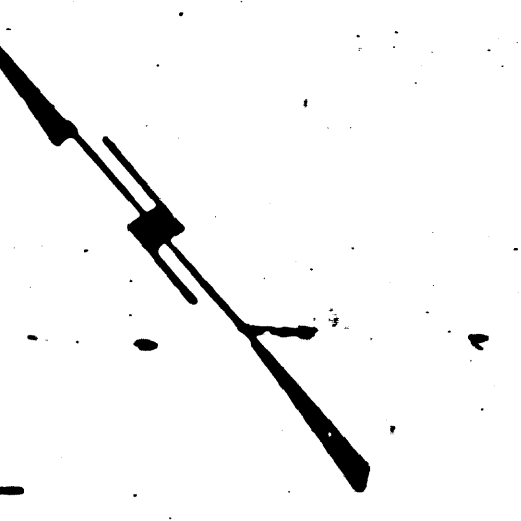
RANCHO POTRERO DE FELIPE LUGO  
BLK G Lot 1  
M.R. 43, 43-45

TRACT N<sup>o</sup> 11701  
M.B. 211, 40-41

TRACT N<sup>o</sup> 19352



Page 3

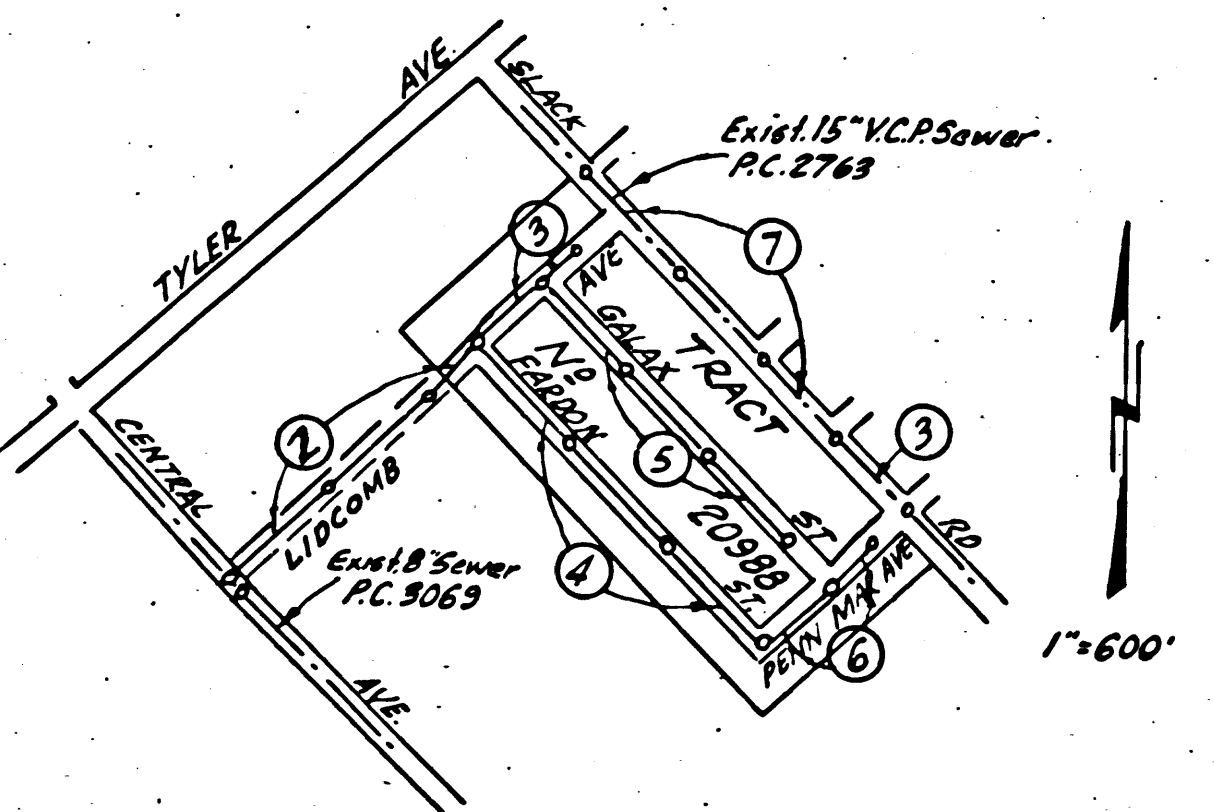


PC. 3361  
Page 2

COLLECT CHARGES AS  
INDICATED

20,095

B.M. 51279 VOL. 2, Pg. 570 E1243335  
Lead & Bench nail in old conc. head wall  
3'15" W of E of Peak Rd. (Prop) & 1'00" N. & Parallel of Slack Rd.



INDEX MAP  
TRACT No 20988 PC. 3361

checked 4-13-55 [Signature]

PUENTE BLDG. DIST. NO. 2

NOTE:

- Provide stakes on the property lines or property lines produced at right angles to the sewer line at the center line of each manhole.
- No representative of the County Engineer will survey or layout any portion of the work.
- The owner or his authorized representative shall furnish the County Engineer with grade sheets and stations for all house laterals and Y branches and shall provide stakes for them at their proper locations with stationing plainly marked. Any change in location shall be requested in writing by the owner or his representative.
- No revisions shall be made in these plans without the approval of the County Engineer.
1. Use standard manhole frames and covers, S-a-117.
  2. Use standard strength pipe except as noted.
  3. Use joint compound for all vitrified clay pipe joints, per Specs Sec 31.
  4. Resurface all trench within paved area to meet L.A. County Road Dept. or California State Highway Dept. requirements in accordance with permit.
  5. Encase four feet of sewer at points of interference with poles, S-a-119.
  6. House laterals to be constructed with inverts at property line 5 feet below curb grade except as noted.
  7. All structures shall be brick sewer structures, S-a-104.
  8. For allowable leakage test, use Formula No. 2, Spec's., Sec. 51.

SHEET	PAGES
1	1-5
2	6-7

COLLECT CHARGES  
AS INDICATED  
L. Collins - 2-21-55

Trim Line

PROFILE, ALIGNMENT AND GRADE OF  
SANITARY SEWERS  
TO BE CONSTRUCTED IN  
TRACT No 20988

PC. 3361  
Page 1

20,094

PRIVATE CONTRACT NO. 3361  
W. S. 37  
2, SHEETS

Scale: VERT. 1"=4'  
HORIZ. 1"=40' FEBRUARY 1955  
PREPARED IN THE OFFICES OF  
ADAMS & ELLS - ENGINEERS

By [Signature] Reg. C. E. No. 617  
FOR LEGEND SEE PLAN NO. S-a-64

NOTE:

Grades to which this improvement is to be constructed are shown on plans and profiles. Grade points for top of curbs, center line of streets, or center line of alleys are shown by circles on profiles. At all points between designated points the grade shall be established so as to conform to a straight line drawn between said designated points.

Elevations are in feet above U.S.C.S. datum or mean sea level.

This drawing and the data hereon are hereby made a part of the specifications.

Work shall be constructed according to specifications on file in the office of the County Engineer and shall be prosecuted only in the presence of the County Engineer.

Before work can be started, the contractor must obtain a permit to excavate in County streets from the L.A. County Road Dept., 108 W. 2nd St. and make a deposit with the County Engineer, 733 L.A. County Engineering Building, sufficient to cover the cost of construction inspection and record plans.

Approval of this plan by the County of Los Angeles does not constitute a representation as to the accuracy of the location of or the existence or non-existence of any underground utility, pipe, or structure within the limits of this project. This note applies to all sheets.

If work is to be done in a State Highway, a permit must be obtained from the State of California, Division of Highways, 120 South Spring Street.

COUNTY OF LOS ANGELES, CALIFORNIA

Approved, William J. Fox, County Engineer  
Approved, A. M. Rawns  
CHIEF ENGINEER, SAN. DIST. NO. 15

BY: A. P. Collins, Sanitation Engineer  
BY: [Signature], Office Engineer

Checked By: [Signature] 2-24-55  
Office of County Engineer, Reg. C. E. No. 7860

Trim Line

1

(7)

TRACT No 20988

PC. 3361

1

PC. 3361  
Page 3

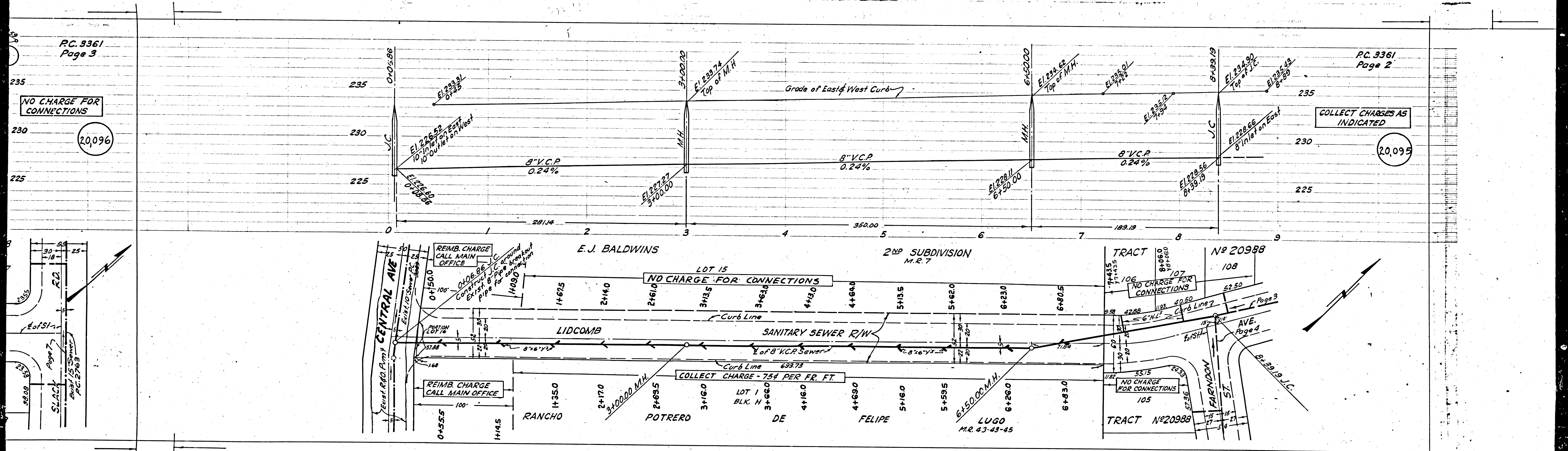
NO CHARGE FOR CONNECTIONS

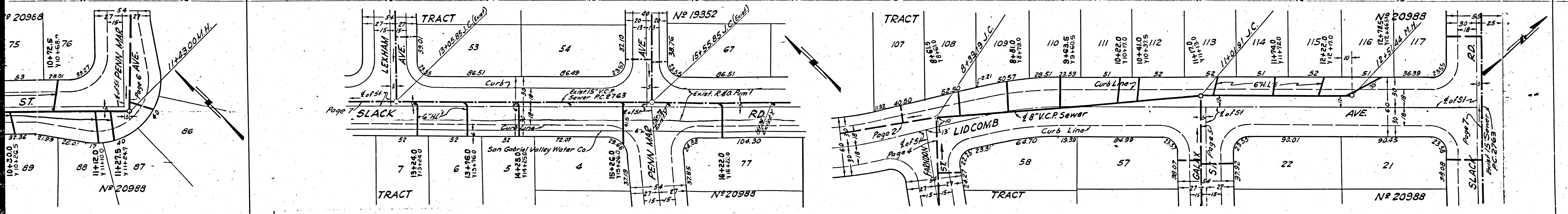
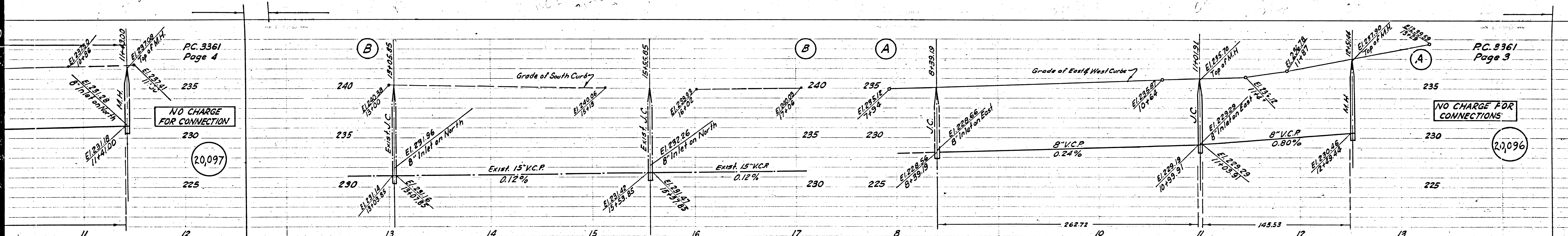
20,096

PC. 3361  
Page 2

COLLECT CHARGES AS INDICATED

20,095





PC. 3361  
Page 4

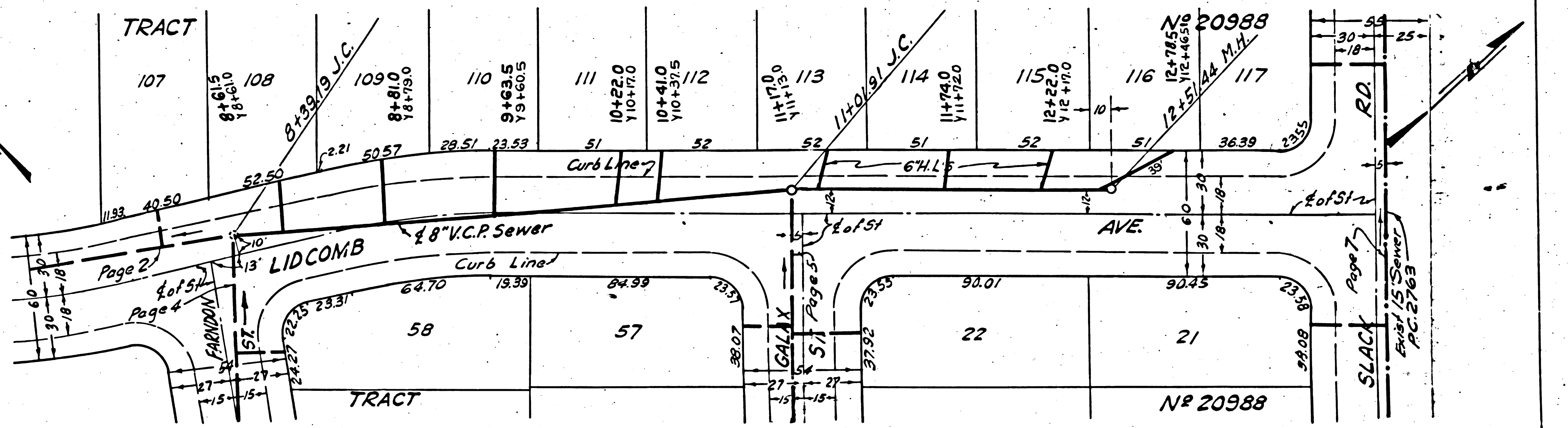
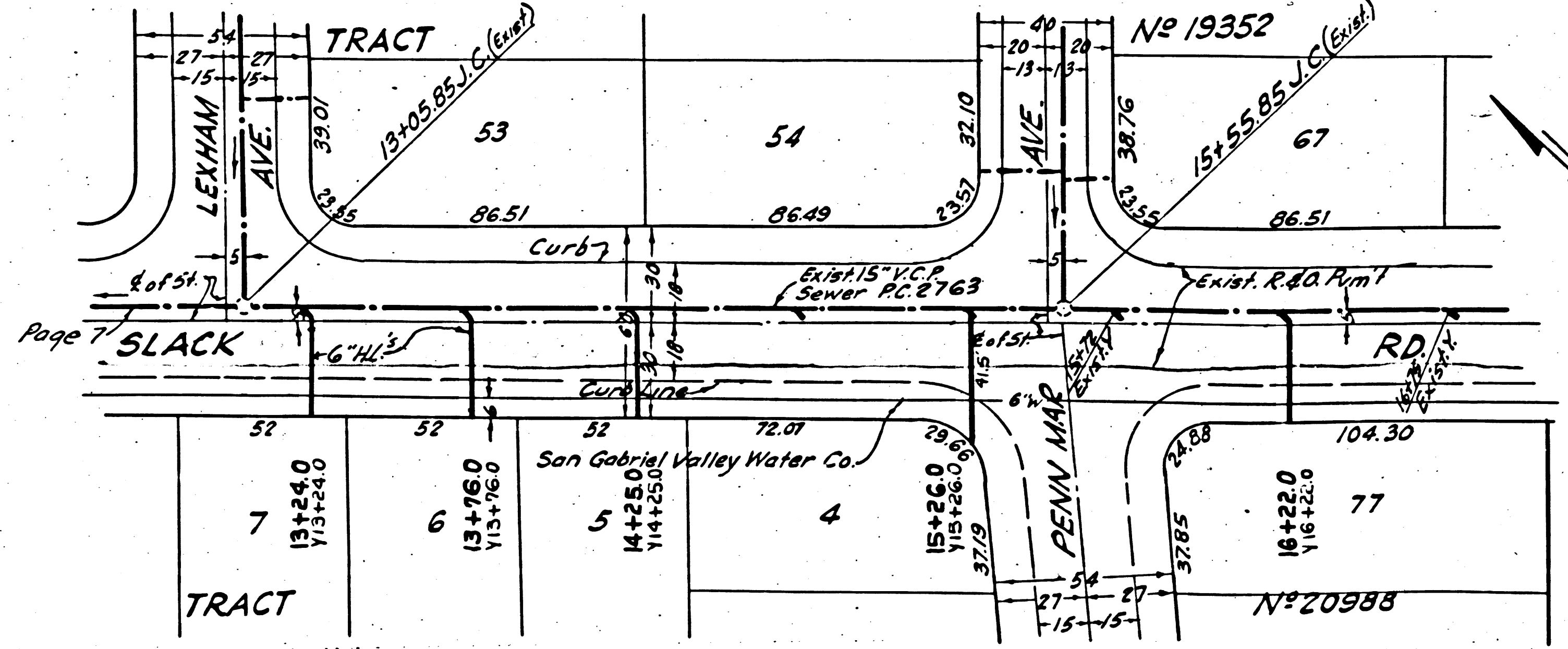
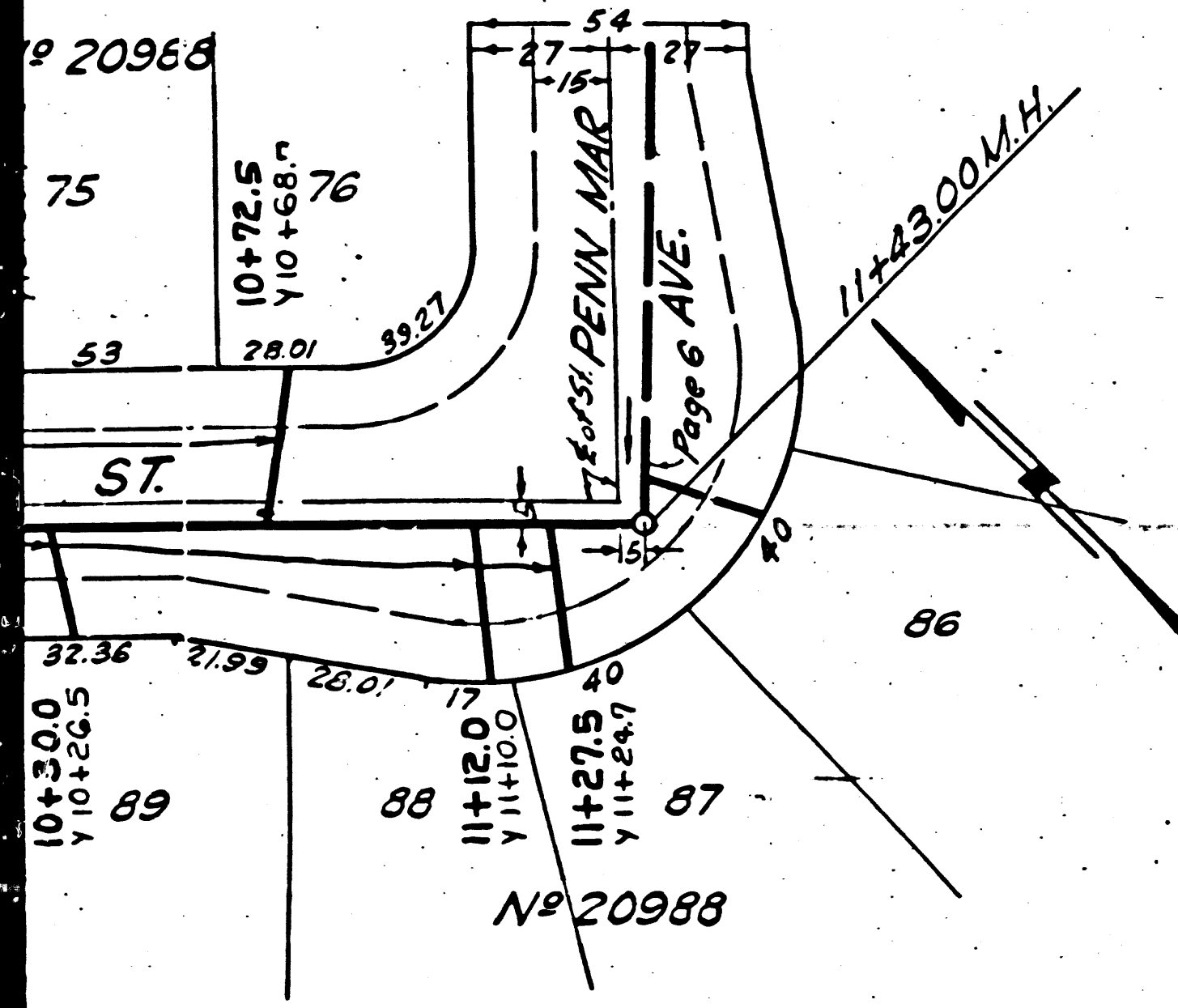
PC. 3361  
Page 3

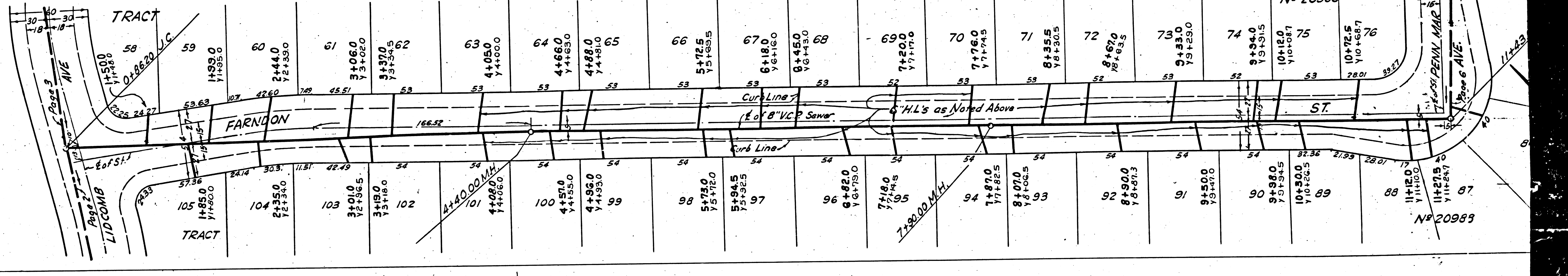
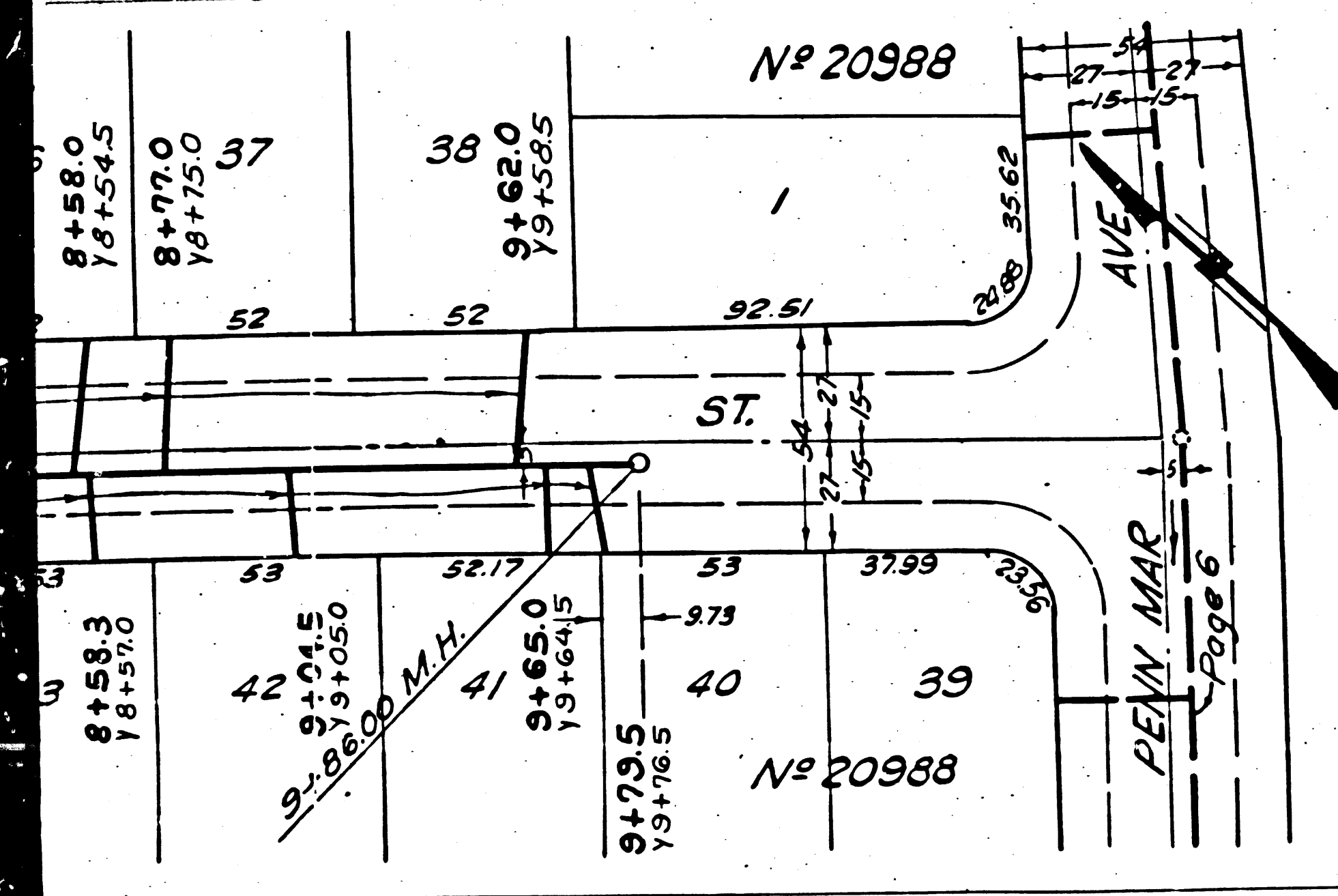
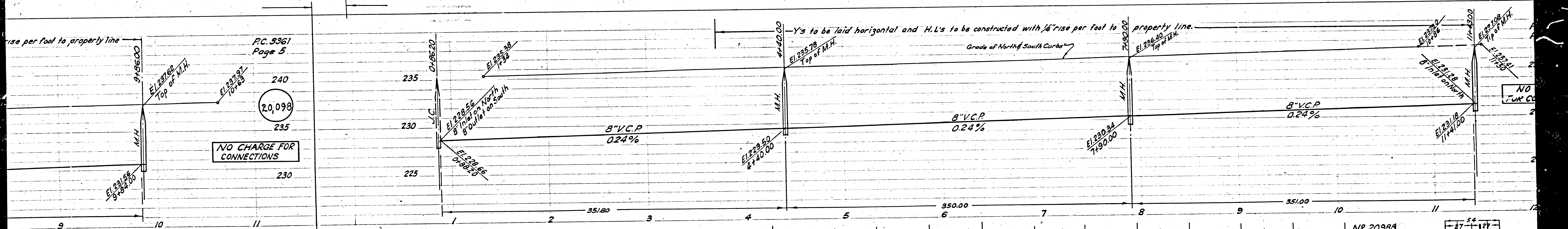
NO CHARGE  
FOR CONNECTION

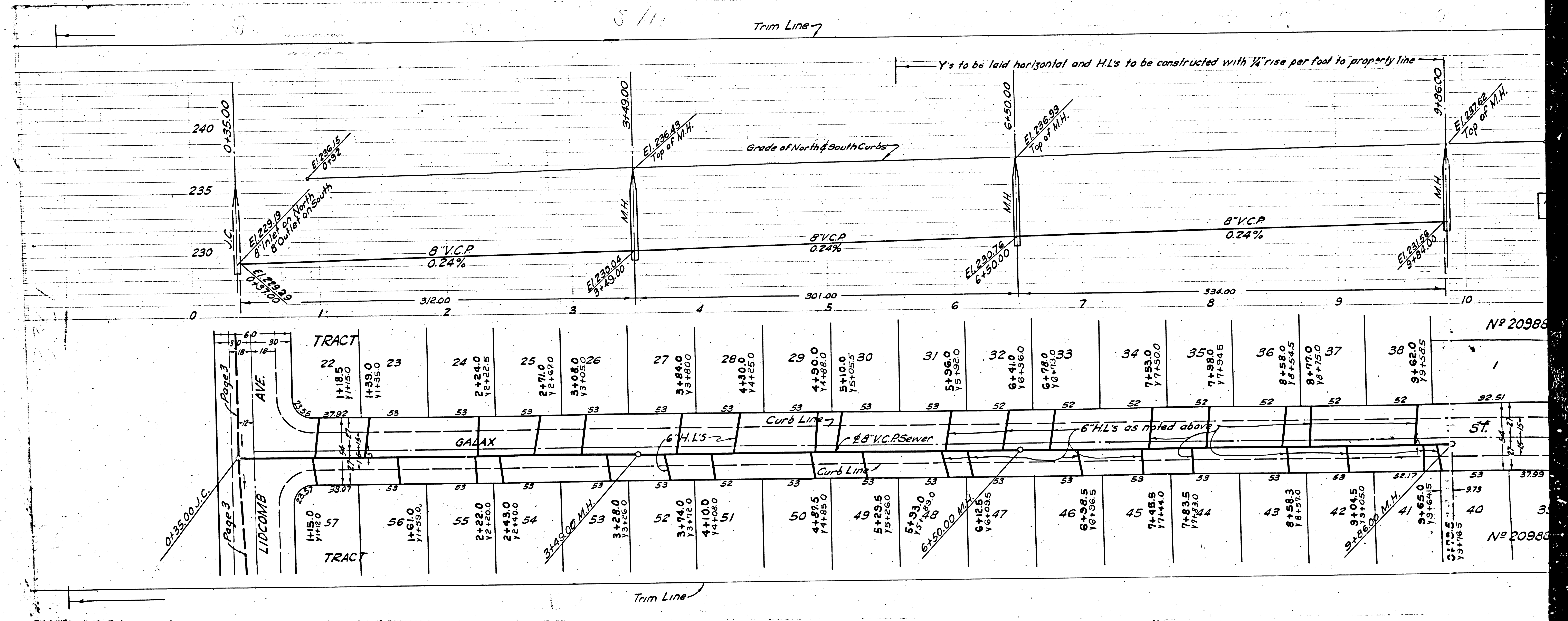
NO CHARGE FOR  
CONNECTIONS

20,097

20,096







5/11

Trim Line

Y's to be laid horizontal and H.L.'s to be constructed with 1/4" rise per foot to properly line

Grade of North & South Curbs

8" V.C.P. 0.24%

Nº 20986

Nº 20986

22	23	24	25	26	27	28	29	30	31	32	33	34	35	36	37	38	
1+185.0 1+185.0 1+185.0	1+39.0 1+350.0 1+350.0	2+23.0 1+222.5 1+222.5	2+43.0 1+240.0 1+240.0	3+280.0 1+316.0 1+316.0	3+74.0 1+372.0 1+372.0	4+10.0 1+408.0 1+408.0	4+90.0 1+498.0 1+498.0	5+105.0 1+505.0 1+505.0	5+96.0 1+595.0 1+595.0	6+41.0 1+636.0 1+636.0	6+78.0 1+633.0 1+633.0	7+53.0 1+750.0 1+750.0	7+98.0 1+754.5 1+754.5	8+58.0 1+854.5 1+854.5	8+79.0 1+875.0 1+875.0	9+62.0 1+965.0 1+965.0	
57	56	55	54	53	52	51	50	49	48	47	46	45	44	43	42	41	40
1+15.0 1+15.0 1+15.0	1+61.0 1+759.0 1+759.0	2+22.0 1+220.0 1+220.0	2+43.0 1+240.0 1+240.0	3+280.0 1+316.0 1+316.0	3+74.0 1+372.0 1+372.0	4+10.0 1+408.0 1+408.0	4+90.0 1+498.0 1+498.0	5+29.5 1+526.0 1+526.0	5+93.0 1+533.0 1+533.0	6+125.0 1+625.0 1+625.0	6+98.5 1+636.5 1+636.5	7+45.0 1+745.0 1+745.0	7+83.5 1+730.0 1+730.0	8+58.0 1+858.0 1+858.0	9+04.5 1+905.0 1+905.0	9+65.0 1+965.0 1+965.0	10+52.0 1+975.0 1+975.0

Trim Line