

SAN DIMAS BLDG. DIST. N^o 10

NOTE:

Provide stakes on the property lines or property lines produced at right angles to the sewer line at the center line of each manhole.

No representative of the County Engineer will survey or layout any portion of the work. The owner or his authorized representative shall furnish the County Engineer with grade sheets and stations for all house laterals and Y branches and shall provide stakes for them at their proper locations with stationing plainly marked. Any change in location shall be requested in writing by the owner or his representative.

No revisions shall be made in these plans without the approval of the County Engineer.

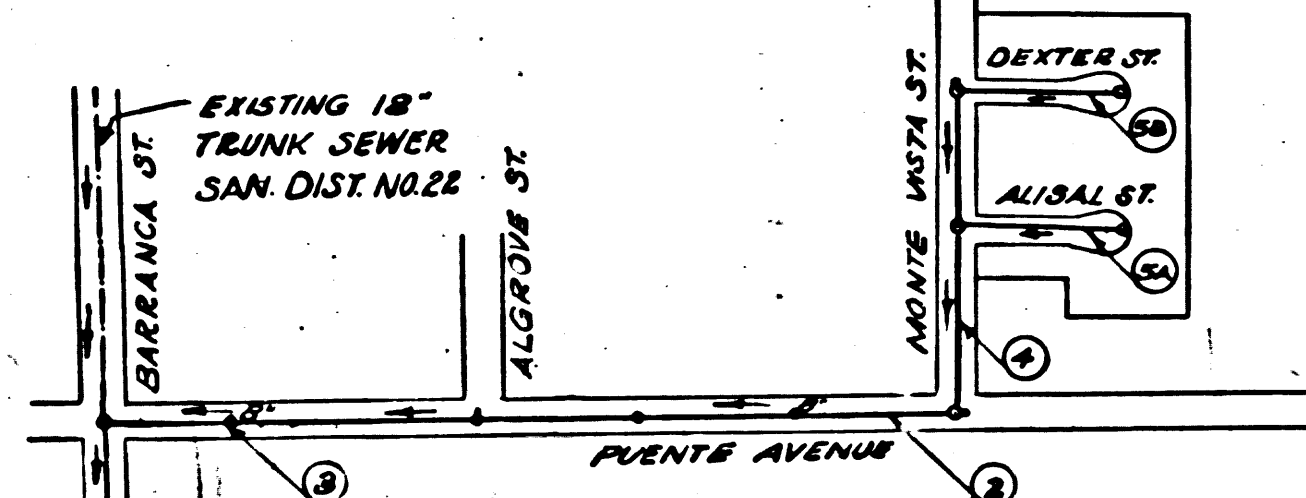
1. Use standard manhole frames and covers, S-a-117.
2. Use standard strength pipe except as noted.
3. Use cement mortar for all vitrified clay pipe joints.
4. Resurface all trench within paved area to meet L.A. County Road Dept. or California State Highway Dept. requirements in accordance with permit.
5. Excise four feet of sewer at points of interference with poles, S-a-119.
6. House laterals to be constructed with inverts at property line $\text{---} \text{---}$ feet below curb grade except as noted.
7. All structures shall be brick sewer structures, S-a-104.
8. For allowable leakage test, use Formula No. --- Spec't., Sec. 51.
9. Manhole tops in unimproved Rights-Of-Way to be 6" above finish grade.

Before breaking into any existing structure and before final acceptance of this work, County Sanitation Districts should be notified in order that required inspection may be made.

B.M. S.G. 434 Elev. 593.608
Lead & Tack in E. edge of corner
Weir Box 33'± W of E of
Grand Ave 35'± S of E of
Puente St.

SHEET N ^o	PAGES
1	1-5

L. Curtis 9-30-55
**COLLECT CHARGES
AS INDICATED**



INDEX MAP
Scale: 1"=400' P.C. 3363
TRACT NO. 2118

checked 3-9-56 W. L. ...

Trim Line

Trim Line

PROFILE, ALIGNMENT AND GRADE OF
SANITARY SEWERS
TO BE CONSTRUCTED IN

TRACT N^o 2118

PRIVATE CONTRACT NO. 3363
W. S. 47
1 SHEET

Scale: VERT. 1"=4' HORIZ. 1"=40'
MAY 1955

PREPARED IN THE OFFICES OF
KEMMERER ENGINEERING CO. INC.

Wanda C. Thomas
Reg. C. E. No. 8244
FOR LEGEND SEE PLAN NO. S-a-64

NOTE:

Grades to which this improvement is to be constructed are shown on plans and profiles. Grade points for top of curbs, center line of streets, or center line of alleys are shown by circles on profiles. At all points between designated points the grade shall be established so as to conform to a straight line drawn between said designated points.

Elevations are in feet above U.S.G.S. datum or mean sea level. This drawing and the data hereon are hereby made a part of the specifications.

Work shall be constructed according to specifications on file in the office of the County Engineer and shall be prosecuted only in the presence of the County Engineer.

Before work can be started, the contractor must obtain a permit to excavate in County streets from the L.A. County Road Dept., 108 W. 2nd St. and make a deposit with the County Engineer, Room 310, 253 South Broadway sufficient to cover the cost of construction inspection and record plans.

Approval of this plan by the County of Los Angeles does not constitute a representation as to the accuracy of the location of or the existence or non-existence of any underground utility, pipe, or structure within the limits of this project. This note applies to all sheets.

If work is to be done in a State Highway, a permit must be obtained from the State of California, Division of Highways, 120 South Spring Street.

COUNTY OF LOS ANGELES, CALIFORNIA
Approved, William J. Fox, County Engineer
Approved, A. M. Ravn
CHIEF ENGINEER SAN DIST. NO. 22
D. P. Collins
Sanitation Engineer
R. K. Hulme
Checked By: 9-30-55
Office Engineer
Office of County Engineer, Reg. C. E. No. 2860

PAGE 1

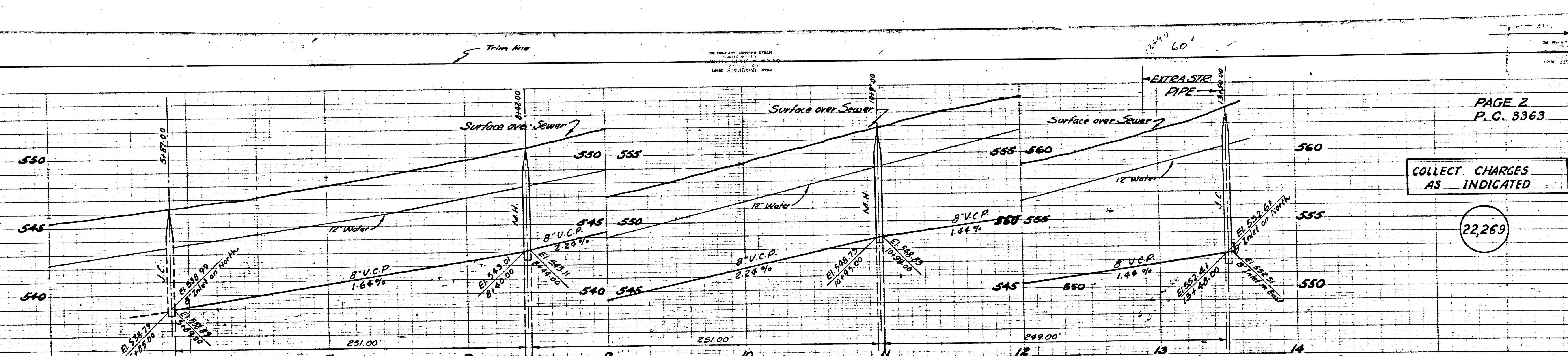
P.C. 3363

22,268

(5)

B.C. 3363

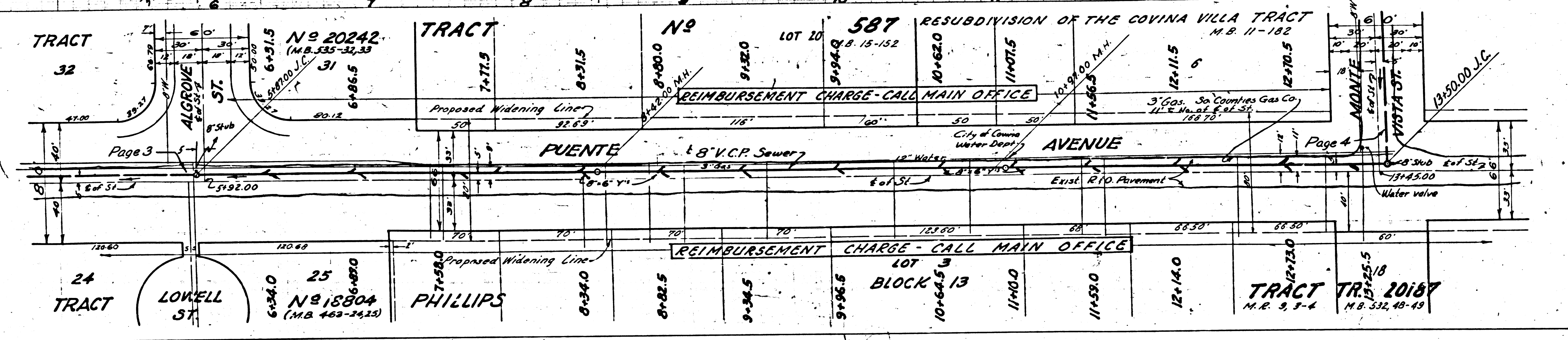
RS.



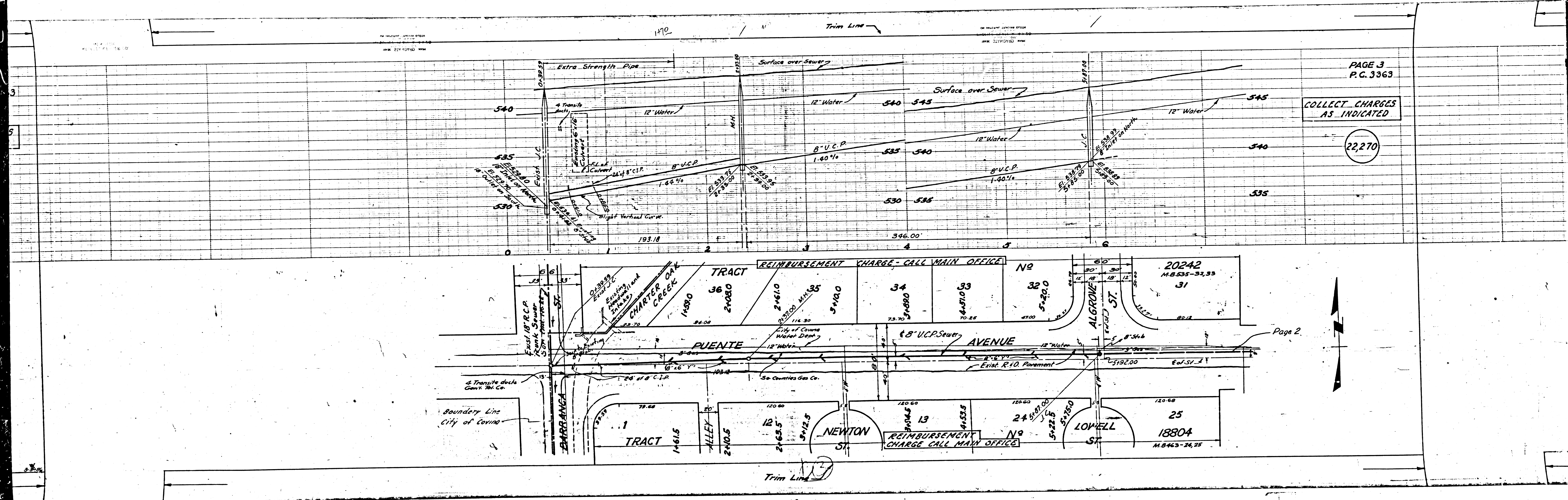
PAGE 2
P. C. 3363

COLLECT CHARGES
AS INDICATED

22,269



Trim line



PAGE 3
P.C. 3363

COLLECT CHARGES
AS INDICATED

22,270

Page 2

REIMBURSEMENT CHARGE - CALL MAIN OFFICE

REIMBURSEMENT CHARGE - CALL MAIN OFFICE

TRACT 1-1615

TRACT 2-1405

TRACT 3-1205

TRACT 4-1105

TRACT 5-1005

TRACT 6-905

TRACT 36-2400

TRACT 35-2400

TRACT 34-2400

TRACT 33-2400

TRACT 32-2400

TRACT 31-2400

TRACT 20242

TRACT 18804

CHARTER OAK CREEK

PUENTE AVENUE

ALGRONE ST

NEWTON ST

LOWELL ST

ALLEY

ALLEY

ALLEY

ALLEY

ALLEY

BOUNDARY LINE CITY OF CORVINO

BOUNDARY LINE CITY OF CORVINO

BOUNDARY LINE CITY OF CORVINO

BOUNDARY LINE CITY OF CORVINO

BOUNDARY LINE CITY OF CORVINO

BOUNDARY LINE CITY OF CORVINO

BOUNDARY LINE CITY OF CORVINO

BOUNDARY LINE CITY OF CORVINO

BOUNDARY LINE CITY OF CORVINO

BOUNDARY LINE CITY OF CORVINO

BOUNDARY LINE CITY OF CORVINO

BOUNDARY LINE CITY OF CORVINO

BOUNDARY LINE CITY OF CORVINO

BOUNDARY LINE CITY OF CORVINO

BOUNDARY LINE CITY OF CORVINO

BOUNDARY LINE CITY OF CORVINO

BOUNDARY LINE CITY OF CORVINO

BOUNDARY LINE CITY OF CORVINO

BOUNDARY LINE CITY OF CORVINO

BOUNDARY LINE CITY OF CORVINO

BOUNDARY LINE CITY OF CORVINO

BOUNDARY LINE CITY OF CORVINO

BOUNDARY LINE CITY OF CORVINO

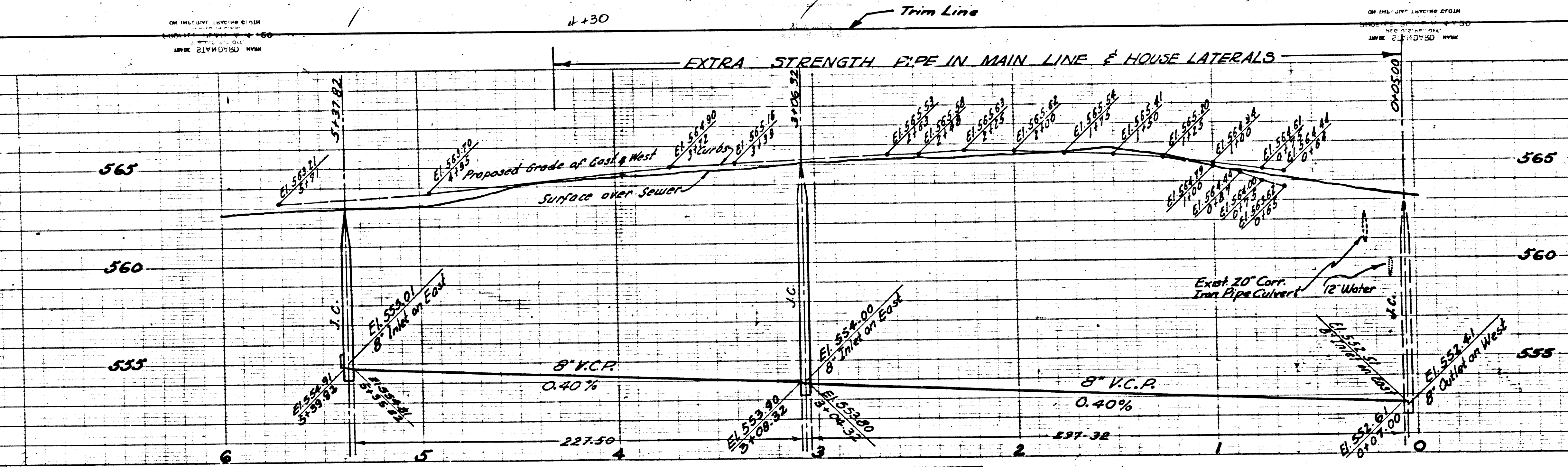
BOUNDARY LINE CITY OF CORVINO

BOUNDARY LINE CITY OF CORVINO

PAGE 5
P.C. 3363

CHARGES
INDICATED

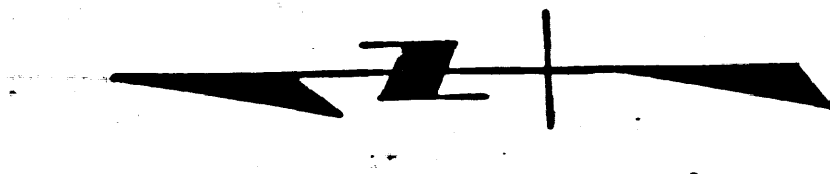
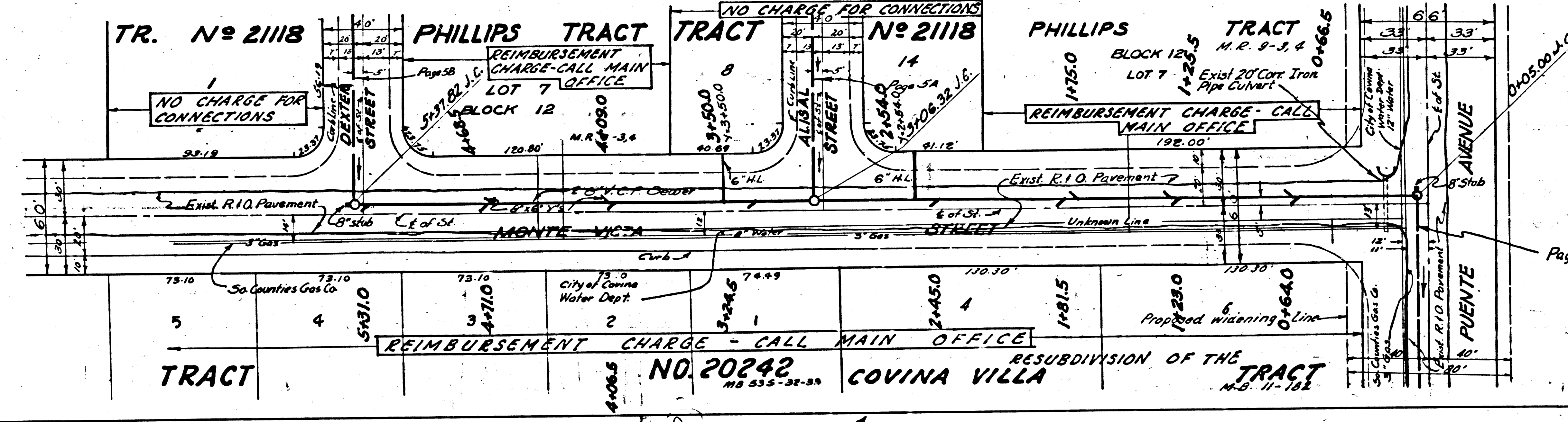
2272



PAGE 4
P.C. 3363

COLLECT CHARGES
AS INDICATED

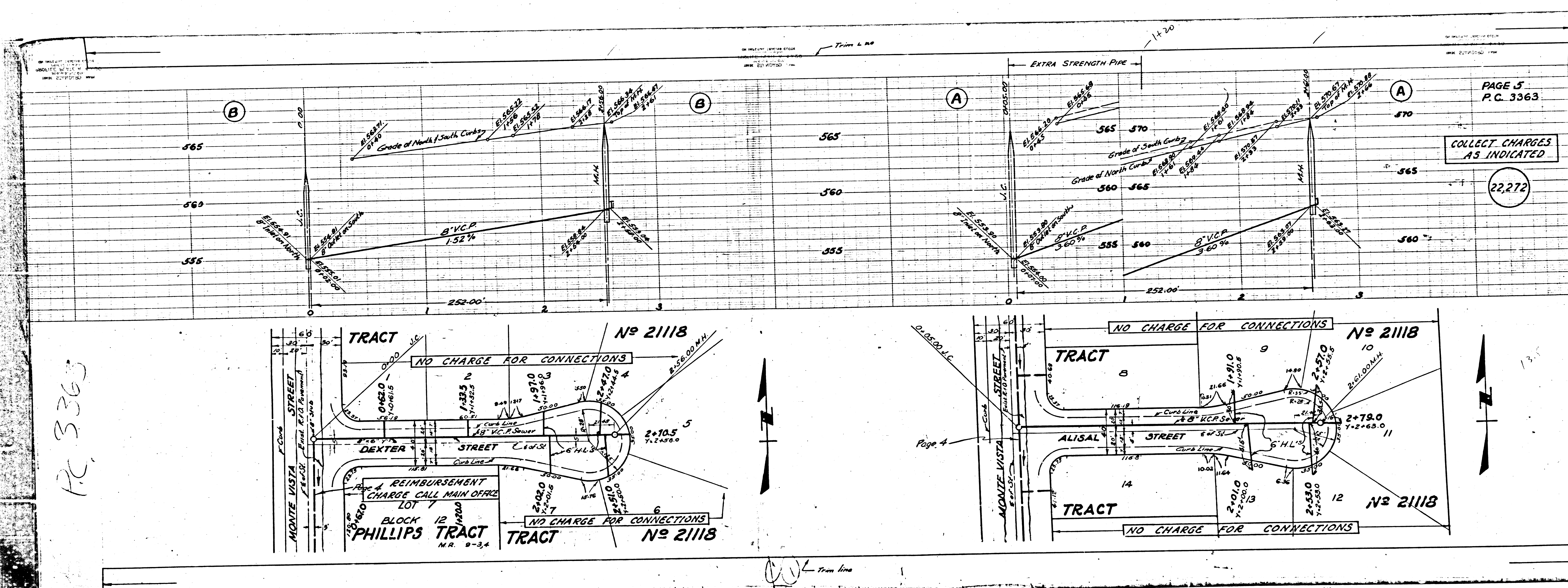
2271



Page 2

Trim Line

P.C. 3363



PAGE 5
P.C. 3363

COLLECT CHARGES
AS INDICATED

22,272

Page 4

Tram line