

P.C. 3365
Page 2

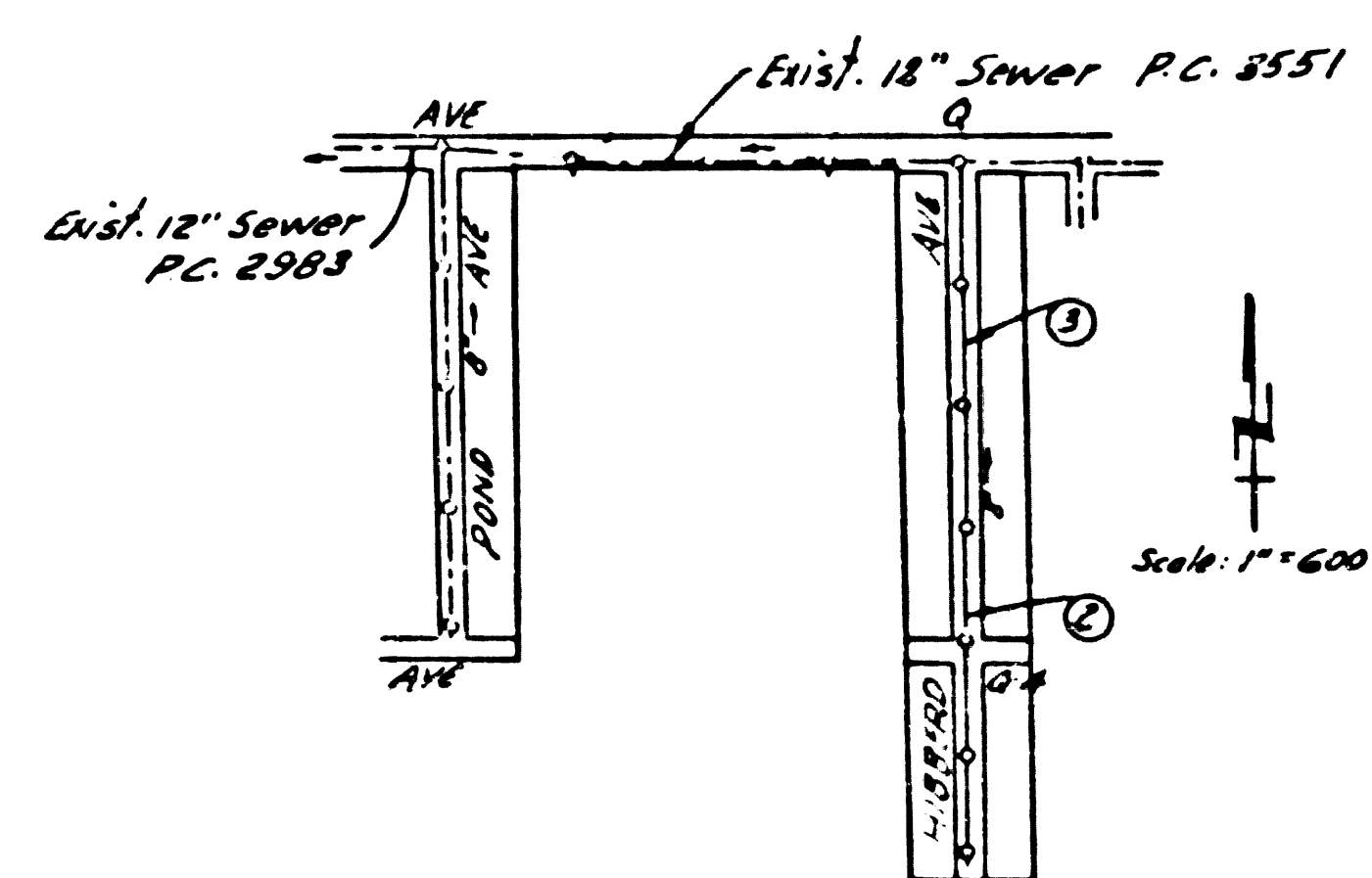
769
NO CHARGE FOR CONNECTIONS

D.M. U.S. 2168 El. 2539.161 35th & Palmdale Blvd. 2.9 mi. E. of Palmdale, 30' N. of Highway top of conc. man. A bronze disk stamped 1.5.1953

NOTE: PALMDALE BLDG DIST N° 8P

- Provide stakes on the property lines or property lines produced at right angles to the sewer line at the center line of each manhole.
- No representative of the County Engineer will survey or layout any portion of the work.
- The owner or his authorized representative shall furnish the County Engineer with grade sheets and stations for all house laterals and Y branches and shall provide stakes for them at their proper locations with stationing plainly marked. Any change in location shall be requested in writing by the owner or his representative.
- No revisions shall be made in these plans without the approval of the County Engineer.
- 1 Use standard manhole frames and covers, S-a-117.
 - 2 Use standard strength pipe except as noted.
 - 3 Use cement mortar for all vitrified clay pipe joints.
 - 4 Resurface all trench within paved area to meet L.A. County Road Dept or California State Highway Dept. requirements in accordance with permit.
 - 5 Encase four feet of sewer at points of interference with poles, S-a-119.
 - 6 House laterals to be constructed with inverts at property line 6 feet below curb grade except as noted.
 - 7 All structures shall be brick sewer structures, S-a-104.
 - 8 For allowable leakage test, use Formula No. 1, Spec's, Sec. 51.
 - 9 Manhole tops in unimproved Rights-Of-Way to be 6" above finish grade.
 - 10 Ball all pipe joints with 4" cement mortar that are within 20 ft. of all property lines or in Sanitary Sewer R/W.

SHEET	PAGES
1	1-3



NO CHARGE FOR CONNECTIONS
S-a-117

INDEX MAP
TRACT N° 19968
P.C. 3365

Dec'd 12-13-56 Wilaren

PROFILE, ALIGNMENT AND GRADE OF
SANITARY SEWERS
TO BE CONSTRUCTED IN
TRACT N° 19968

P.C. 3365
Page 1

23768

PRIVATE CONTRACT NO. 3365
65 W. S.
ONE SHEETS

Scale: VERT. 1"=4'
HORIZ. 1"=40' FEB. 1955

PREPARED IN THE OFFICES OF
R.L. STUCKEY CO.

R.L. Stuckey
C.E. No. 6067

FOR LEGEND SEE PLAN NO. S-a-64

NOTE:

Grades to which this improvement is to be constructed are shown on plans and profiles. Grade points for top of curbs, center line of streets, or center line of alleys are shown by circles on profiles. At all points between designated points the grade shall be established so as to conform to a straight line drawn between said designated points.

Elevations are in feet above U.S.G.S. datum or mean sea level.

This drawing and the data herein are hereby made a part of the specifications.

Work shall be constructed according to specifications on file in the office of the County Engineer and shall be prosecuted only in the presence of the County Engineer.

Before work can be started, the contractor must obtain a permit to excavate in County streets from the L.A. County Road Dept., 108 W. 2nd St. and make a deposit with the County Engineer, Room 324, 293 South Broadway, sufficient to cover the cost of construction inspection and record plans.

Approval of this plan by the County of Los Angeles does not constitute a representation as to the accuracy of the location of or the existence or non-existence of any underground utility, pipe, or structure within the limits of this project. This note applies to all sheets.

If work is to be done in a State Highway, a permit must be obtained from the State of California, Division of Highways, 120 South Spring Street.

COUNTY OF LOS ANGELES, CALIFORNIA

Approved, William J. Fox, County Engineer

Approved, A. M. Raven
CHIEF ENGR. CO. SAN. DIST. NO. 80

By *R.L. Stuckey* Dist. Sanitary Engineer By *E.P. Bennett* Office Engineer

Checked by *S.K. Onda* 8-11-55
Office of County Engineer, Reg. C. E. No. 3406

P.C. 3365 TRACT N° 19968

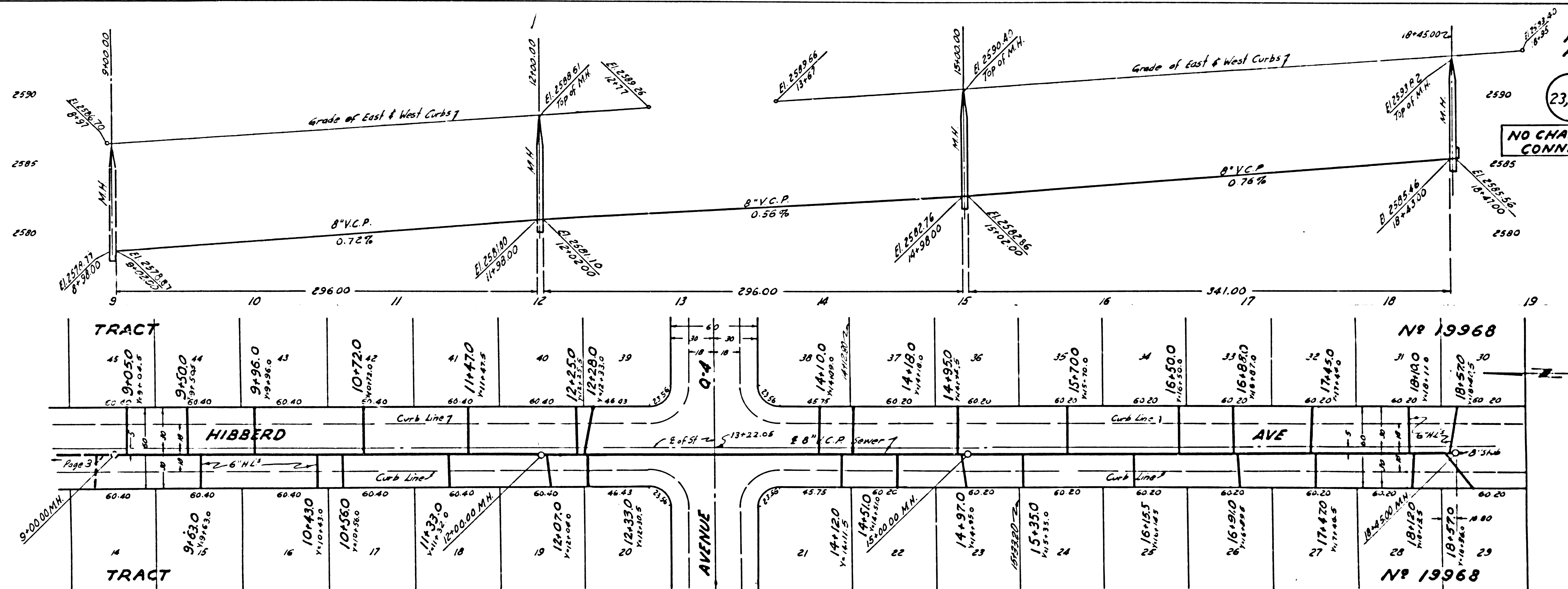
Bl.

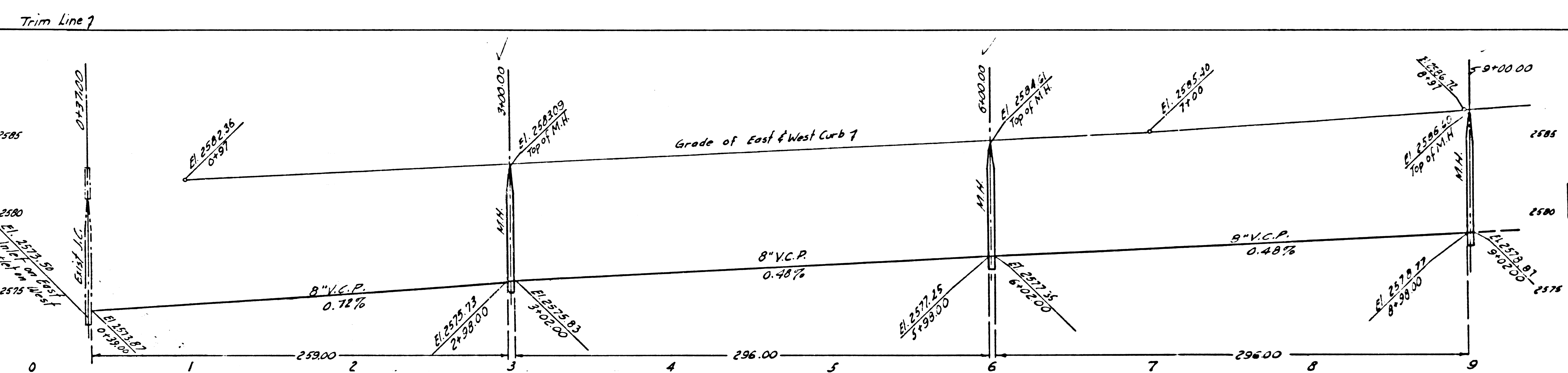
23,770

CHARGE FOR CONNECTIONS

23,769

NO CHARGE FOR CONNECTIONS

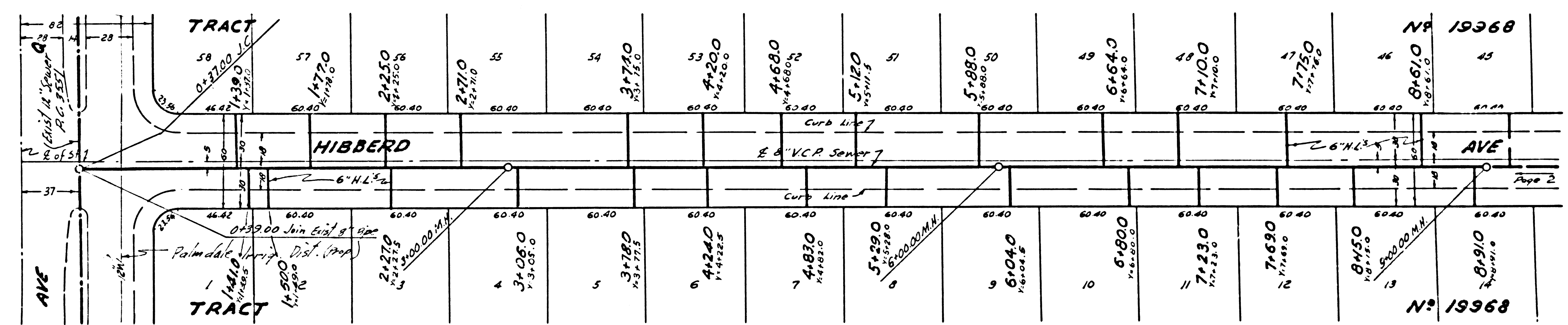




PC 3365
Page 3

23,770

NO CHARGE FOR CONNECTIONS



Trim Line

9+00.00