

BELLFLOWER BLDG. DIST. N^o 4

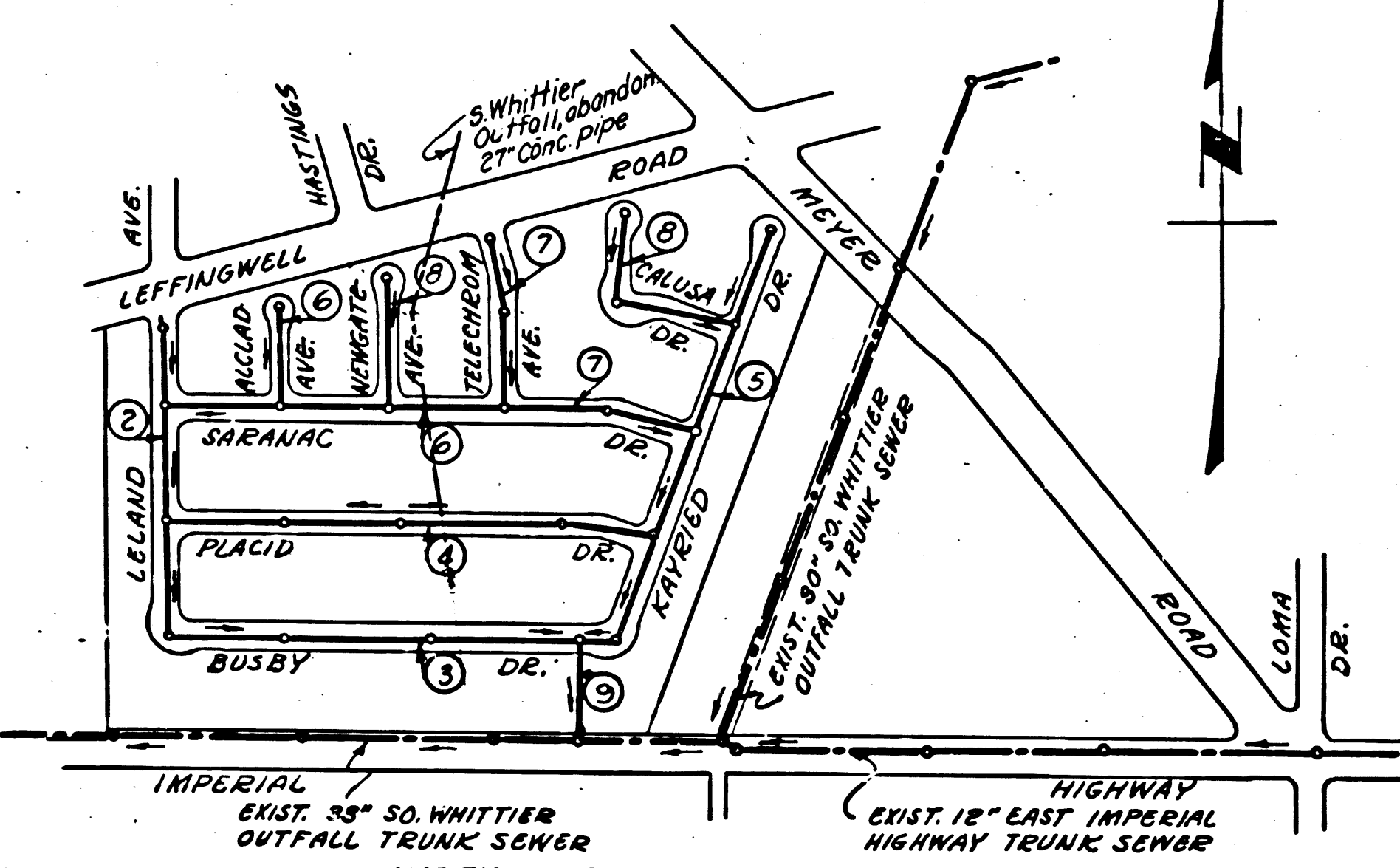
NOTE:
NO REPRESENTATIVE OF THE COUNTY ENGINEER WILL SURVEY OR LAY OUT ANY PORTION OF THE WORK.
THE OWNER OR HIS AUTHORIZED REPRESENTATIVE SHALL FURNISH THE COUNTY ENGINEER WITH GRADE SHEETS AND STATIONS FOR ALL HOUSE LATERALS AND Y BRANCHES AND SHALL PROVIDE STAKES FOR THEM AT THEIR PROPER LOCATIONS WITH STATIONING PLAINLY MARKED. ANY CHANGE OF LOCATION SHALL BE REQUESTED IN WRITING BY THE OWNER OR HIS REPRESENTATIVE.
NO REVISIONS SHALL BE MADE IN THESE PLANS WITHOUT APPROVAL OF THE COUNTY ENGINEER.

1. USE STANDARD MANHOLE FRAMES AND COVERS, S-a-117.
2. USE STANDARD STRENGTH PIPE EXCEPT AS NOTED.
3. USE CEMENT MORTAR FOR ALL VITRIFIED CLAY PIPE JOINTS.
4. RESURFACE ALL TRENCH WITHIN PAVED AREA TO MEET L. A. COUNTY ROAD DEPT. REQUIREMENTS IN ACCORDANCE WITH PERMIT.
5. ENCASE FOUR FEET OF SEWER AT POINTS OF INTERFERENCE WITH POLES, S-a-119.
6. HOUSE LATERALS TO BE CONSTRUCTED WITH INVERT AT PROPERTY LINE 6 FEET BELOW CURB GRADE.
7. ALL STRUCTURES SHALL BE BRICK SEWER STRUCTURES, S-a-104.
8. PROVIDE STAKES ON THE PROPERTY LINES OR PROPERTY LINES PRODUCED, AT RIGHT ANGLES TO THE SEWER LINE AT THE CENTER LINE OF EACH MANHOLE.
9. FOR ALLOWABLE LEAKAGE TEST USE FORMULA NO SPECS. 1 SEC. 51.

Before breaking into any existing structure and before final acceptance of this work, County Sanitation District should be notified in order that required inspection may be made.

NO CHARGE FOR CONNECTIONS
L. Hunter 5-6-55

ENGINEERING SERVICE CORPORATION			
1127 W. WASHINGTON BLVD.			
LOS ANGELES 15, CALIF.		PR. 7281	
REVISIONS			
		TRACED BY <i>GD-W.F.</i>	
		DES'G'D BY <i>J.W.F.</i>	
		CK'D BY	
		SUBMITTED <i>M</i>	
SUB STRUCTURES OK'D			
W. O. NO.	DWG. NO.	DATE	SCALE
6748-1		Oct. 1954	As Noted
			L. B. F. B.



BENCH MARK
1-7. RE 329 Elev. 114.580
Brass 3rd. County Survey Man.
Set in well 15" below surface
100' S of E. of Imperial Highway
4 1/2' E. of S. of Valley View Avenue.

Checked 10-20-55 M. Brown

INDEX MAP
TRACT N^o 20762
P.C. 3373
Scale 1" = 400'

PROFILE, ALIGNMENT AND GRADE OF
SANITARY SEWERS
TO BE CONSTRUCTED IN
TRACT N^o 20762
PRIVATE CONTRACT NO. 3373
W. S. 34
SHEET 1 OF 2 SHEETS

P. C. 3373
PAGE 1
(of 9 pges)

SCALE: VERT. 1" = 4'
HOR. 1" = 40'

OCTOBER 1954

PREPARED IN THE OFFICES OF
ENGINEERING SERVICE CORPORATION

BY *P. R. Brown*
REG. C. E. NO. 3692

FOR LEGEND
SEE PLAN NO. S-a-64

NOTE:
GRADES TO WHICH THIS IMPROVEMENT IS TO BE CONSTRUCTED ARE SHOWN ON PLANS AND PROFILES. GRADE POINTS FOR TOP OF CURB, CENTER LINE OF STREETS, OR CENTER LINE OF ALLEY ARE SHOWN BY CIRCLES ON PROFILES. AT ALL POINTS BETWEEN DESIGNATED POINTS THE GRADE SHALL BE ESTABLISHED SO AS TO CONFORM TO A STRAIGHT LINE DRAWN BETWEEN SAID DESIGNATED POINTS.
ELEVATIONS ARE IN FEET ABOVE U. S. G. S. DATUM OR MEAN SEA LEVEL.
THIS DRAWING AND THE DATA HEREON ARE HEREBY MADE A PART OF THE SPECIFICATIONS.
WORK SHALL BE CONSTRUCTED ACCORDING TO SPECIFICATIONS ON FILE IN THE OFFICE OF THE COUNTY ENGINEER AND SHALL BE PROSECUTED ONLY IN THE PRESENCE OF THE COUNTY ENGINEER.
BEFORE WORK CAN BE STARTED THE CONTRACTOR MUST OBTAIN A PERMIT TO EXCAVATE IN COUNTY STREETS FROM THE L. A. COUNTY ROAD DEPT. 108 W. 2ND ST. AND MAKE A DEPOSIT WITH THE COUNTY ENGINEER, ROOM 324, 253 SO. BROADWAY SUFFICIENT TO COVER THE COST OF CONSTRUCTION INSPECTION AND RECORD PLANS.
APPROVAL OF THIS PLAN BY THE COUNTY OF LOS ANGELES DOES NOT CONSTITUTE A REPRESENTATION AS TO THE ACCURACY OF THE LOCATION OF, OR THE EXISTENCE OR NON-EXISTENCE OF, ANY UNDERGROUND UTILITY, PIPE, OR STRUCTURE WITHIN THE LIMITS OF THIS PROJECT.

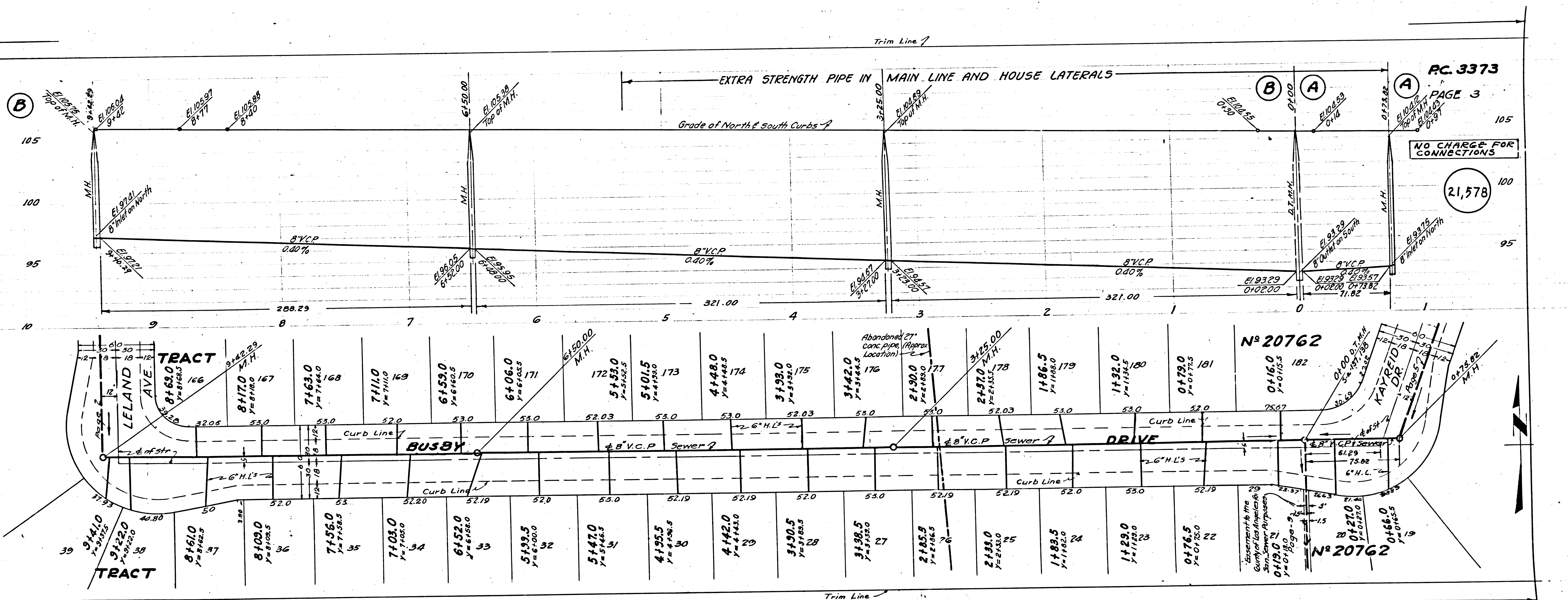
COUNTY OF LOS ANGELES, CALIFORNIA
APPROVED, *W. J. Fox*
COUNTY ENGINEER
APPROVED, *A. M. Rawm*
CHIEF ENGINEER OF COUNTY
SANITATION-DISTRICT NO. 16
BY *P. R. Brown* *G. J. Matthews*
Sanitation Engineer
CHECKED BY *P. R. Brown* *G. J. Matthews*
OFFICE OF COUNTY ENGINEER
REG. C. E. NO. 7960

21,576

P.C. N^o 3373
TRACT NO. 20762
SANITARY SEWER
E. E. E. D. A.

Rel.

Trim Line



105
100
95
10

PC. 3373
PAGE 3
105
100
95

NO CHARGE FOR CONNECTIONS
21,578

Station	Elevation	Notes
9+44.0	94.44	M.H.
9+44.25	94.25	M.H.
9+44.5	94.5	M.H.
9+44.75	94.75	M.H.
9+45.0	94.5	M.H.
9+45.25	94.25	M.H.
9+45.5	94.5	M.H.
9+45.75	94.75	M.H.
9+46.0	94.6	M.H.
9+46.25	94.25	M.H.
9+46.5	94.5	M.H.
9+46.75	94.75	M.H.
9+47.0	94.7	M.H.
9+47.25	94.25	M.H.
9+47.5	94.5	M.H.
9+47.75	94.75	M.H.
9+48.0	94.8	M.H.
9+48.25	94.25	M.H.
9+48.5	94.5	M.H.
9+48.75	94.75	M.H.
9+49.0	94.9	M.H.
9+49.25	94.25	M.H.
9+49.5	94.5	M.H.
9+49.75	94.75	M.H.
9+50.0	95.0	M.H.
9+50.25	94.25	M.H.
9+50.5	94.5	M.H.
9+50.75	94.75	M.H.
9+51.0	95.1	M.H.
9+51.25	94.25	M.H.
9+51.5	94.5	M.H.
9+51.75	94.75	M.H.
9+52.0	95.2	M.H.
9+52.25	94.25	M.H.
9+52.5	94.5	M.H.
9+52.75	94.75	M.H.
9+53.0	95.3	M.H.
9+53.25	94.25	M.H.
9+53.5	94.5	M.H.
9+53.75	94.75	M.H.
9+54.0	95.4	M.H.
9+54.25	94.25	M.H.
9+54.5	94.5	M.H.
9+54.75	94.75	M.H.
9+55.0	95.5	M.H.
9+55.25	94.25	M.H.
9+55.5	94.5	M.H.
9+55.75	94.75	M.H.
9+56.0	95.6	M.H.
9+56.25	94.25	M.H.
9+56.5	94.5	M.H.
9+56.75	94.75	M.H.
9+57.0	95.7	M.H.
9+57.25	94.25	M.H.
9+57.5	94.5	M.H.
9+57.75	94.75	M.H.
9+58.0	95.8	M.H.
9+58.25	94.25	M.H.
9+58.5	94.5	M.H.
9+58.75	94.75	M.H.
9+59.0	95.9	M.H.
9+59.25	94.25	M.H.
9+59.5	94.5	M.H.
9+59.75	94.75	M.H.
9+60.0	96.0	M.H.
9+60.25	94.25	M.H.
9+60.5	94.5	M.H.
9+60.75	94.75	M.H.
9+61.0	96.1	M.H.
9+61.25	94.25	M.H.
9+61.5	94.5	M.H.
9+61.75	94.75	M.H.
9+62.0	96.2	M.H.
9+62.25	94.25	M.H.
9+62.5	94.5	M.H.
9+62.75	94.75	M.H.
9+63.0	96.3	M.H.
9+63.25	94.25	M.H.
9+63.5	94.5	M.H.
9+63.75	94.75	M.H.
9+64.0	96.4	M.H.
9+64.25	94.25	M.H.
9+64.5	94.5	M.H.
9+64.75	94.75	M.H.
9+65.0	96.5	M.H.
9+65.25	94.25	M.H.
9+65.5	94.5	M.H.
9+65.75	94.75	M.H.
9+66.0	96.6	M.H.
9+66.25	94.25	M.H.
9+66.5	94.5	M.H.
9+66.75	94.75	M.H.
9+67.0	96.7	M.H.
9+67.25	94.25	M.H.
9+67.5	94.5	M.H.
9+67.75	94.75	M.H.
9+68.0	96.8	M.H.
9+68.25	94.25	M.H.
9+68.5	94.5	M.H.
9+68.75	94.75	M.H.
9+69.0	96.9	M.H.
9+69.25	94.25	M.H.
9+69.5	94.5	M.H.
9+69.75	94.75	M.H.
9+70.0	97.0	M.H.
9+70.25	94.25	M.H.
9+70.5	94.5	M.H.
9+70.75	94.75	M.H.
9+71.0	97.1	M.H.
9+71.25	94.25	M.H.
9+71.5	94.5	M.H.
9+71.75	94.75	M.H.
9+72.0	97.2	M.H.
9+72.25	94.25	M.H.
9+72.5	94.5	M.H.
9+72.75	94.75	M.H.
9+73.0	97.3	M.H.
9+73.25	94.25	M.H.
9+73.5	94.5	M.H.
9+73.75	94.75	M.H.
9+74.0	97.4	M.H.
9+74.25	94.25	M.H.
9+74.5	94.5	M.H.
9+74.75	94.75	M.H.
9+75.0	97.5	M.H.
9+75.25	94.25	M.H.
9+75.5	94.5	M.H.
9+75.75	94.75	M.H.
9+76.0	97.6	M.H.
9+76.25	94.25	M.H.
9+76.5	94.5	M.H.
9+76.75	94.75	M.H.
9+77.0	97.7	M.H.
9+77.25	94.25	M.H.
9+77.5	94.5	M.H.
9+77.75	94.75	M.H.
9+78.0	97.8	M.H.
9+78.25	94.25	M.H.
9+78.5	94.5	M.H.
9+78.75	94.75	M.H.
9+79.0	97.9	M.H.
9+79.25	94.25	M.H.
9+79.5	94.5	M.H.
9+79.75	94.75	M.H.
9+80.0	98.0	M.H.
9+80.25	94.25	M.H.
9+80.5	94.5	M.H.
9+80.75	94.75	M.H.
9+81.0	98.1	M.H.
9+81.25	94.25	M.H.
9+81.5	94.5	M.H.
9+81.75	94.75	M.H.
9+82.0	98.2	M.H.
9+82.25	94.25	M.H.
9+82.5	94.5	M.H.
9+82.75	94.75	M.H.
9+83.0	98.3	M.H.
9+83.25	94.25	M.H.
9+83.5	94.5	M.H.
9+83.75	94.75	M.H.
9+84.0	98.4	M.H.
9+84.25	94.25	M.H.
9+84.5	94.5	M.H.
9+84.75	94.75	M.H.
9+85.0	98.5	M.H.
9+85.25	94.25	M.H.
9+85.5	94.5	M.H.
9+85.75	94.75	M.H.
9+86.0	98.6	M.H.
9+86.25	94.25	M.H.
9+86.5	94.5	M.H.
9+86.75	94.75	M.H.
9+87.0	98.7	M.H.
9+87.25	94.25	M.H.
9+87.5	94.5	M.H.
9+87.75	94.75	M.H.
9+88.0	98.8	M.H.
9+88.25	94.25	M.H.
9+88.5	94.5	M.H.
9+88.75	94.75	M.H.
9+89.0	98.9	M.H.
9+89.25	94.25	M.H.
9+89.5	94.5	M.H.
9+89.75	94.75	M.H.
9+90.0	99.0	M.H.
9+90.25	94.25	M.H.
9+90.5	94.5	M.H.
9+90.75	94.75	M.H.
9+91.0	99.1	M.H.
9+91.25	94.25	M.H.
9+91.5	94.5	M.H.
9+91.75	94.75	M.H.
9+92.0	99.2	M.H.
9+92.25	94.25	M.H.
9+92.5	94.5	M.H.
9+92.75	94.75	M.H.
9+93.0	99.3	M.H.
9+93.25	94.25	M.H.
9+93.5	94.5	M.H.
9+93.75	94.75	M.H.
9+94.0	99.4	M.H.
9+94.25	94.25	M.H.
9+94.5	94.5	M.H.
9+94.75	94.75	M.H.
9+95.0	99.5	M.H.
9+95.25	94.25	M.H.
9+95.5	94.5	M.H.
9+95.75	94.75	M.H.
9+96.0	99.6	M.H.
9+96.25	94.25	M.H.
9+96.5	94.5	M.H.
9+96.75	94.75	M.H.
9+97.0	99.7	M.H.
9+97.25	94.25	M.H.
9+97.5	94.5	M.H.
9+97.75	94.75	M.H.
9+98.0	99.8	M.H.
9+98.25	94.25	M.H.
9+98.5	94.5	M.H.
9+98.75	94.75	M.H.
9+99.0	99.9	M.H.
9+99.25	94.25	M.H.
9+99.5	94.5	M.H.
9+99.75	94.75	M.H.
100.0	100.0	M.H.

N^o 20762
KAYRTO DR
M.H.

Trim Line

Trim Line

EXTRA STRENGTH PIPE IN MAIN LINE AND HOUSE LATERALS

Grade of North & South Curbs

PC. 3373

PAGE 3

NO CHARGE FOR CONNECTIONS

21,578

N^o 20762

N^o 20762

N^o 20762

N^o 20762

N^o 20762

N^o 20762

N^o 20762

N^o 20762

N^o 20762

N^o 20762

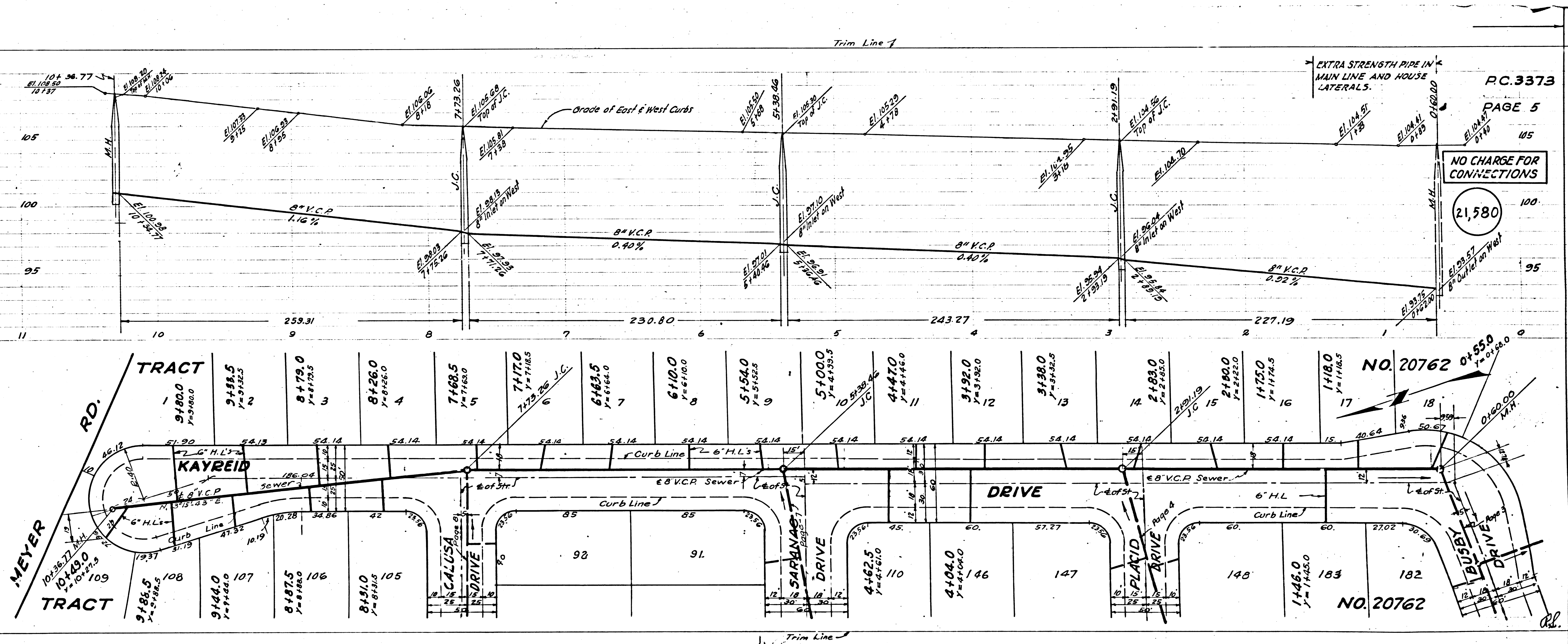
N^o 20762

N^o 20762

N^o 20762

N^o 20762

N^o 20762



PC.3373
PAGE 5

NO CHARGE FOR CONNECTIONS

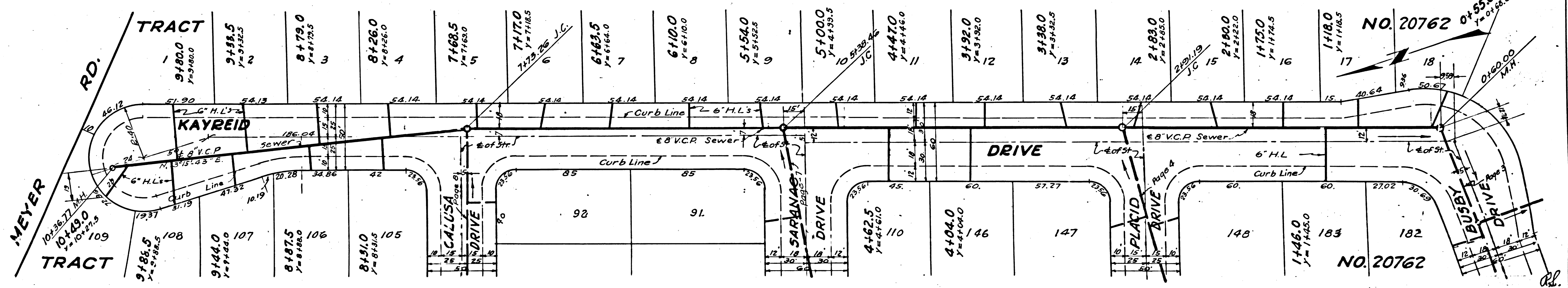
21,580

5

23W 25MEER2

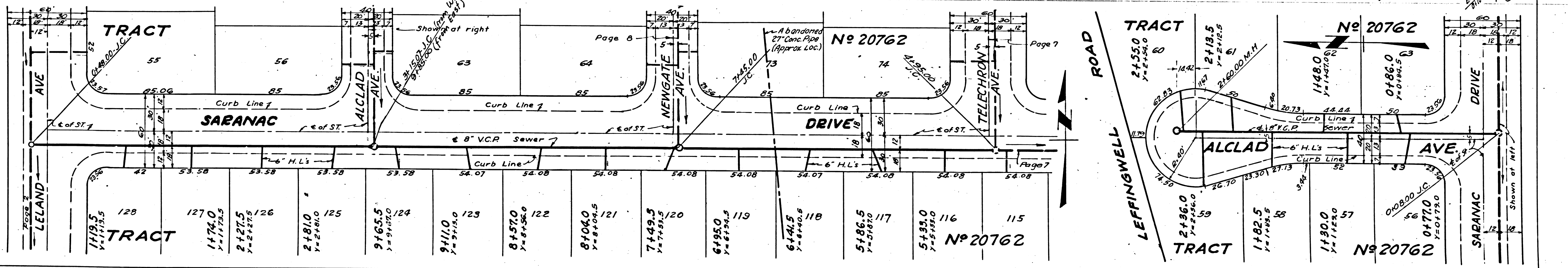
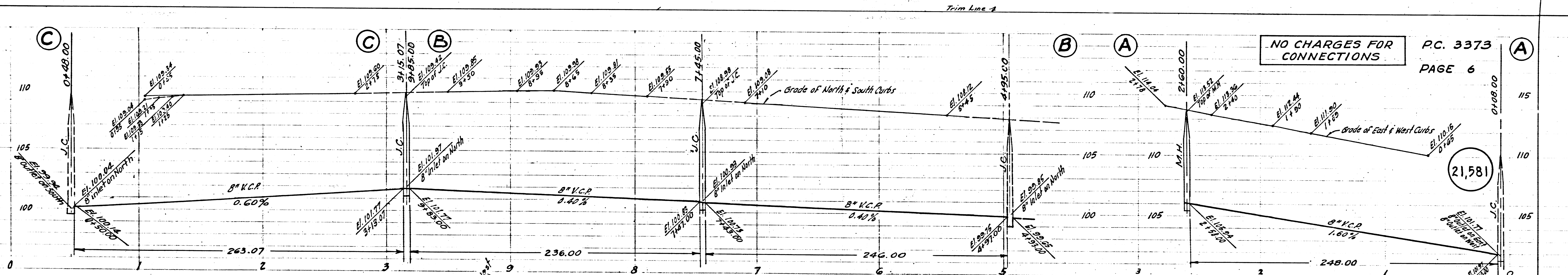
EASEMENT THRU LOTS 11, 12, 13
 23W 25MEER2 - CALIFORNIA
 23W 25MEER2 - JEFFERSON AVE. - RC 9323
 KAYREID DR - VICTOR AVE. - LB. NO. 50265

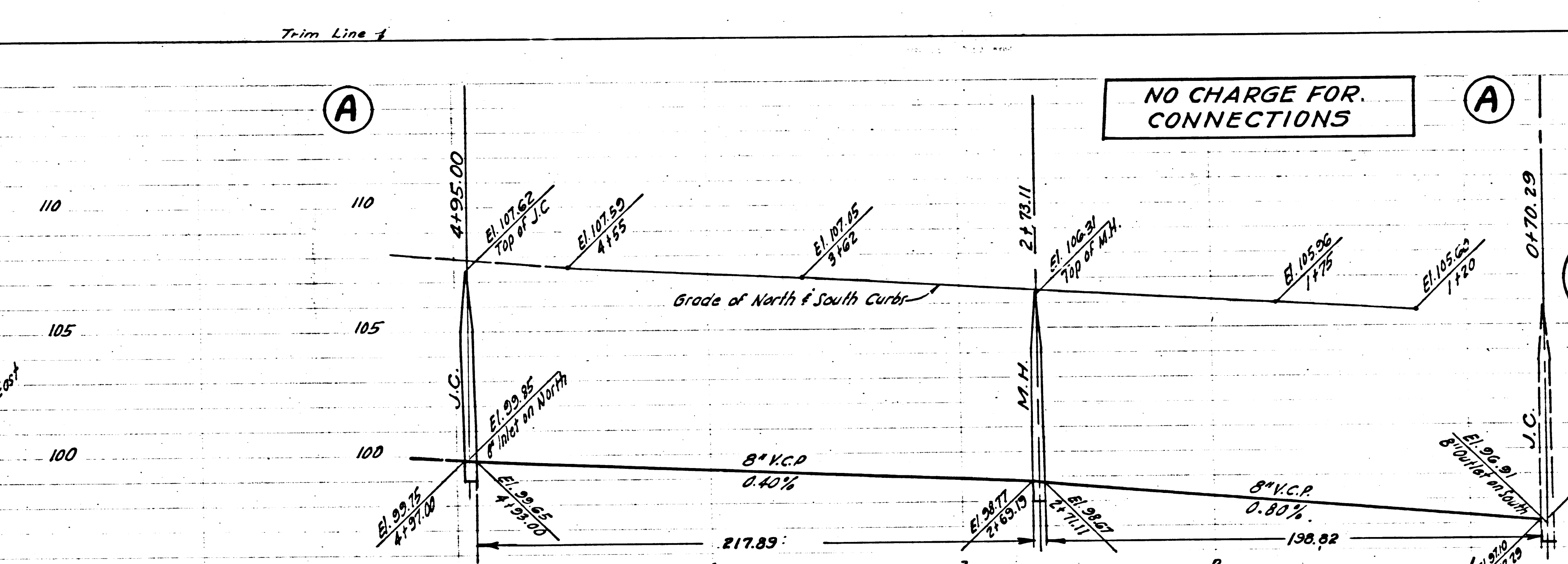
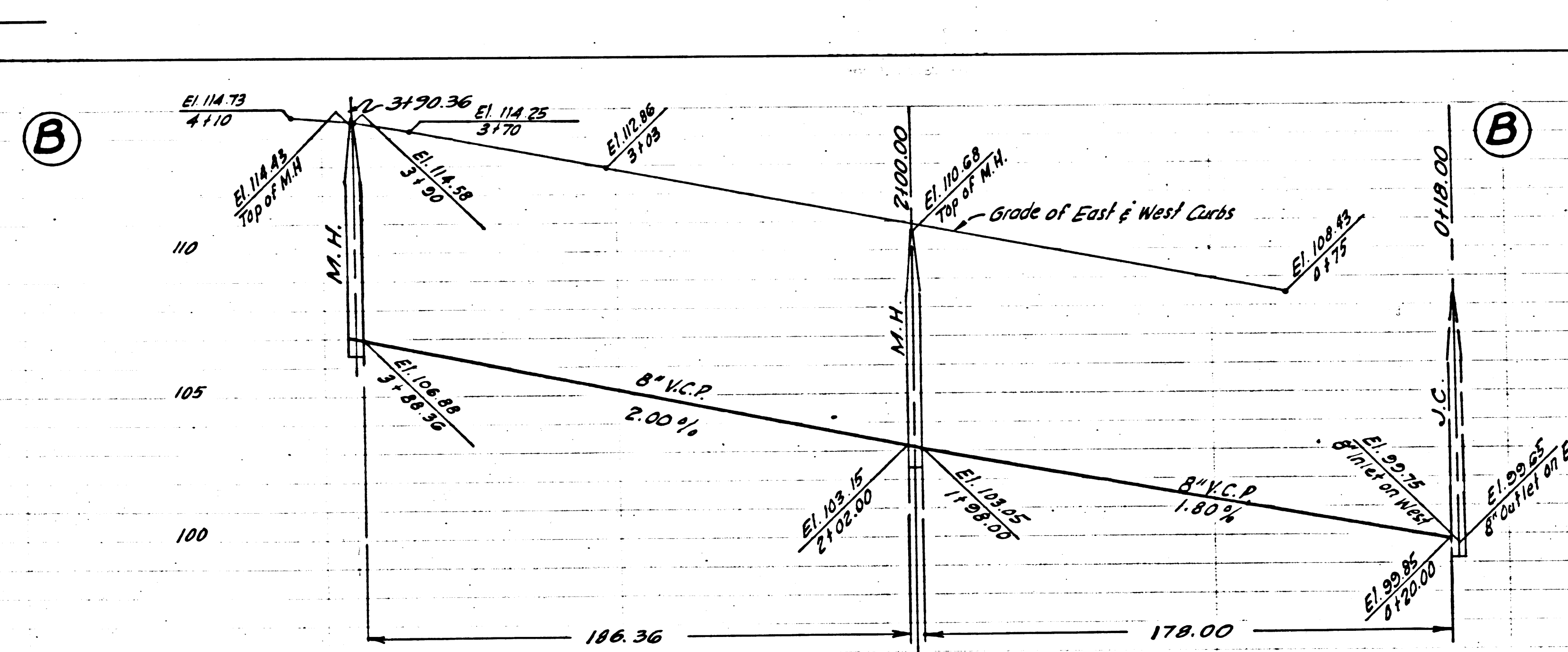
5



NO. 20762

NO. 20762

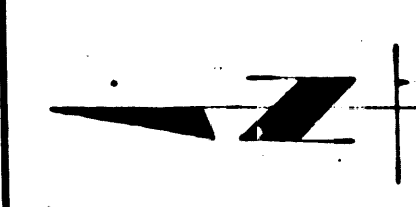
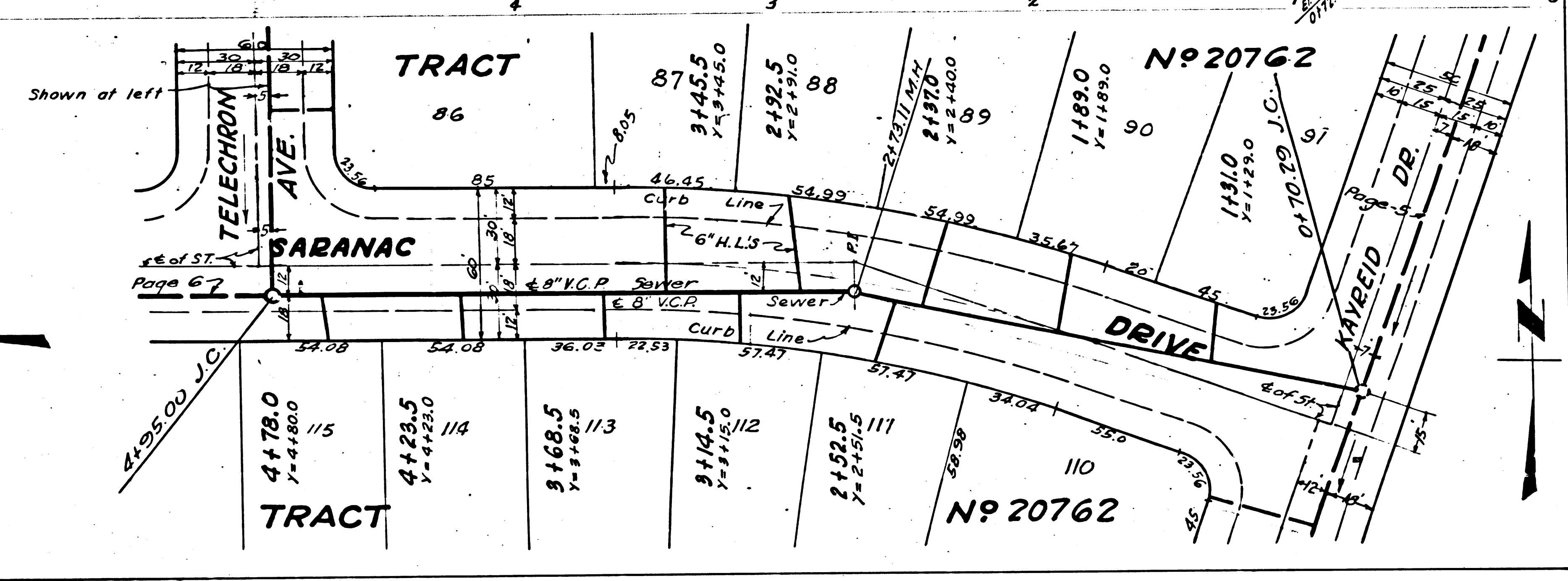
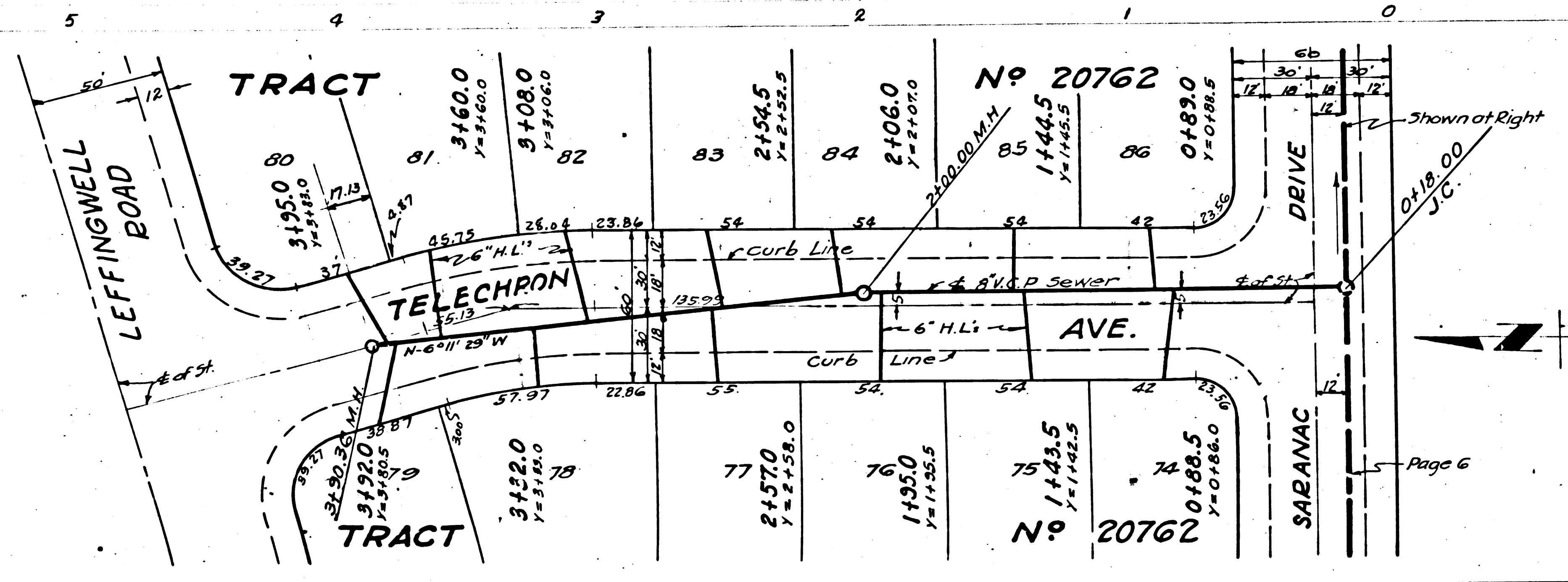




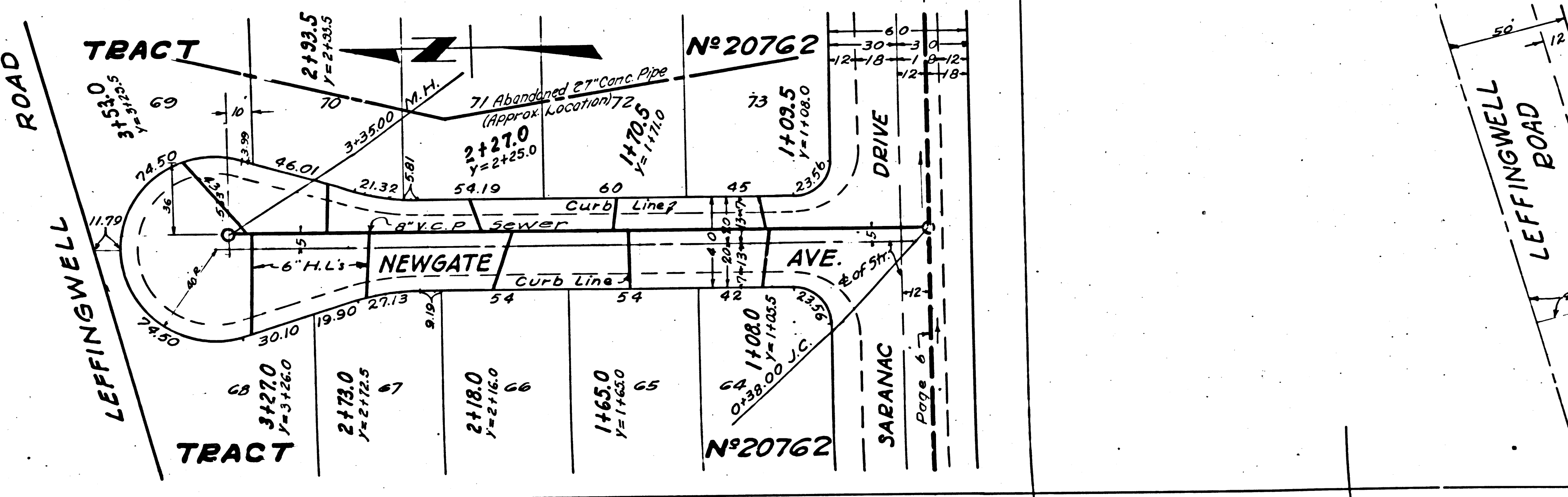
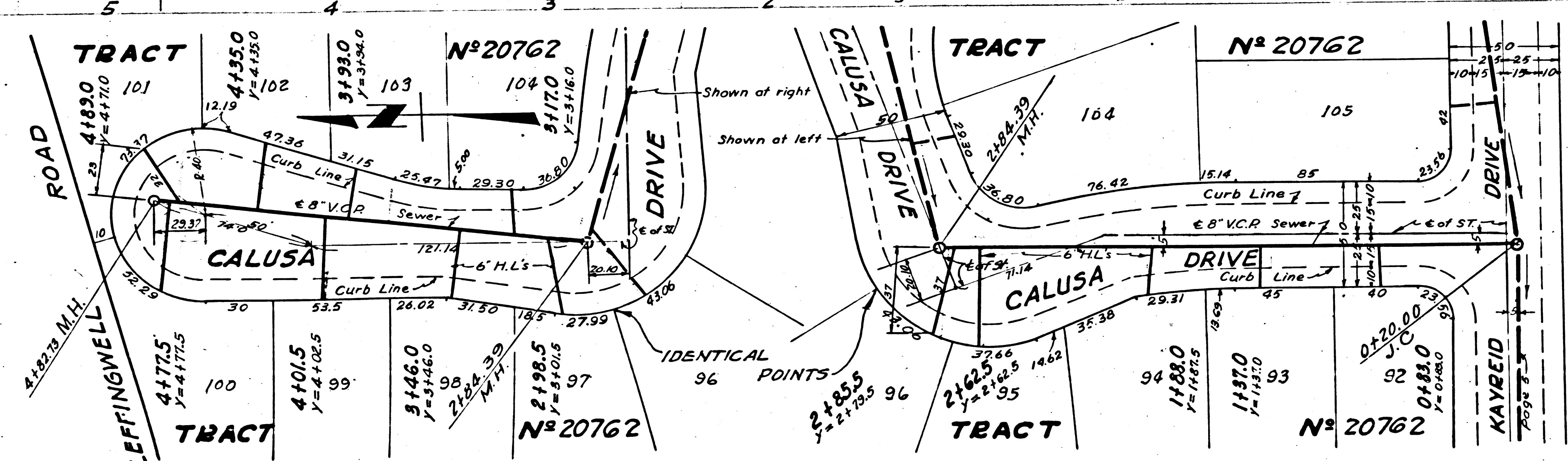
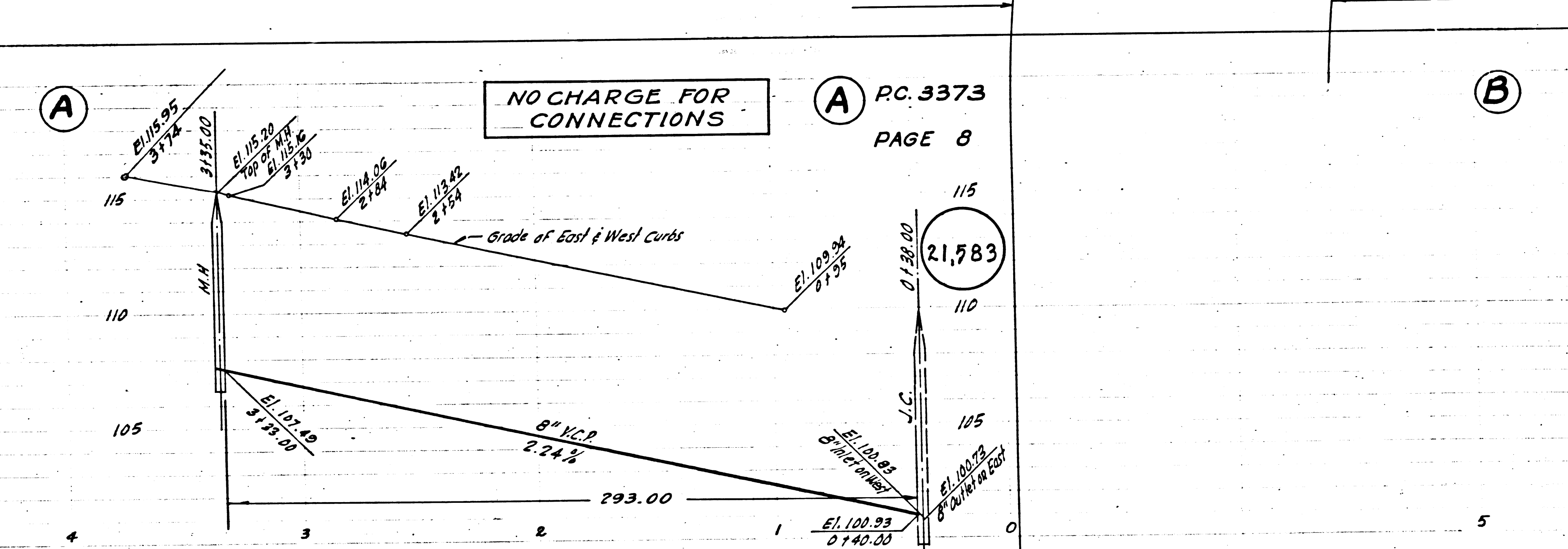
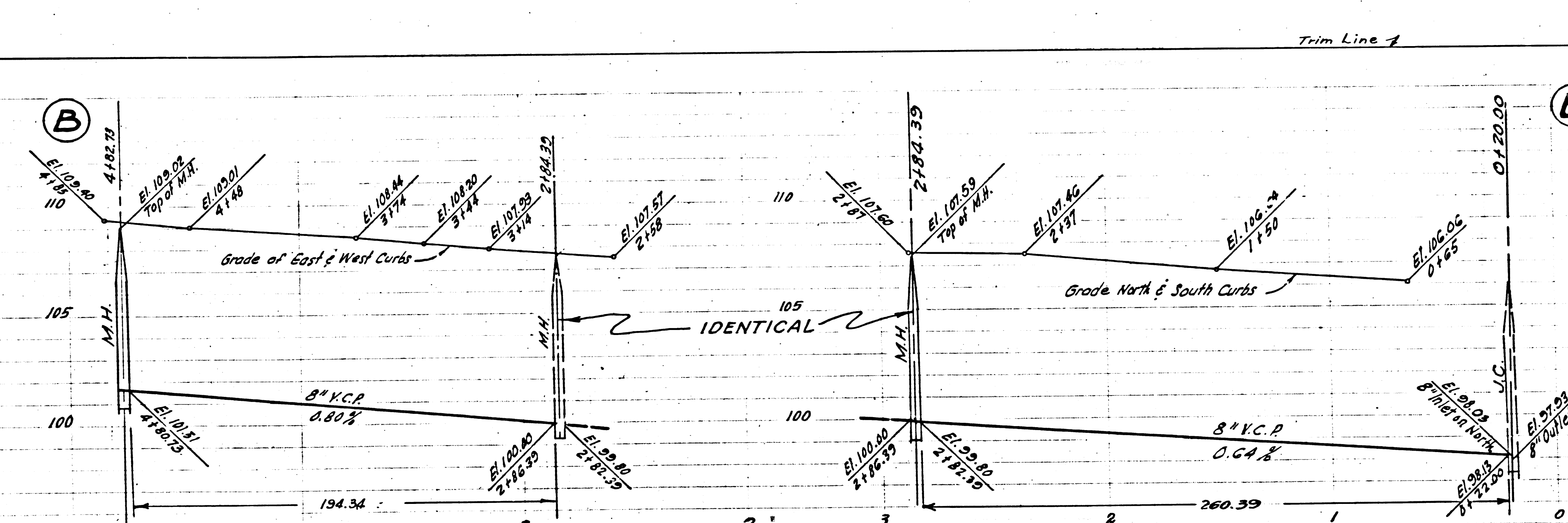
NO CHARGE FOR CONNECTIONS

PC. 3373
PAGE 7

21,582



Trim Line



NO CHARGE FOR CONNECTIONS

PC. 3373
PAGE 8

21,583

