

INDEX MAP
TRACT NO. 20336
P.C. 3380
SCALE 1" = 40'

Added 7-555 W. Mann

BENCH MARK - S.S. 1046 PAGE 453
SPM. AND LEAD IN S.E.
COR. OF CONC. FOUND. OF S.P.R.R. X-ING.
SIGNAL 2.38' W. OF E. OF HACIENDA BLVD.
PROP. NO. 6 20' N. OF NO.
RAIL MAIN LINE VALLEY BLVD X-ING.
IN PUENTE. ELEV. 323.480

SHEET NO.	PAGES
1	1 - 5
2	6 - 10
3	11 - 15
4	16 - 18

PUENTE BLDG. DIST. NO. 2

- NOTE:**
Provide stakes on the property lines or property lines produced at right angles to the sewer line at the center line of each manhole.
No representative of the County Engineer will survey or layout any portion of the work.
The owner or his authorized representative shall furnish the County Engineer with grade sheets and stations for all house laterals and Y branches and shall provide stakes for them at their proper locations with stationing plainly marked. Any change in location shall be requested in writing by the owner or his representative.
No revisions shall be made in these plans without the approval of the County Engineer.
1. Use standard manhole frames and covers, S-a-117.
 2. Use standard strength pipe except as noted.
 3. Use cement mortar for all vitrified clay pipe joints.
 4. Resurface all trench within paved area to meet L.A. County Road Dept. or California State Highway Dept. requirements in accordance with permit.
 5. Encase four feet of sewer at points of interference with poles, S-a-119.
 6. House laterals to be constructed with inverts at property line... 6 feet below curb grade except as noted.
 7. All structures shall be brick sewer structures, S-a-104.
 8. For allowable leakage test, use Formula No. 1, Spec's., Sec. 51.
 9. Manhole tops in unimproved Rights-Of-Way to be 6" above finish grade.

NO CHARGE FOR CONNECTIONS
Ref. 2-22-55

REVISION 3
Revise Curb Elevations & Sewer Grades on Pages 4, 6, 7, 8, 11, 12, 15, 18, & 21. Relocate H.L.'s on Pages 2, 3, 4, 11 & 16.
Approved: *[Signature]* Date 4-20-55
Office of County Engineer
Reg. C. E. No. 7862

PROFILE, ALIGNMENT AND GRADE OF
SANITARY SEWERS
TO BE CONSTRUCTED IN

PAGE 1
P.C. 3380

TRACT NO. 20336

20,767

PRIVATE CONTRACT NO. 3380
W. S. 38
4 SHEETS

Scale: VERT. 1" = 4'
HORIZ. 1" = 40' Feb. 1955

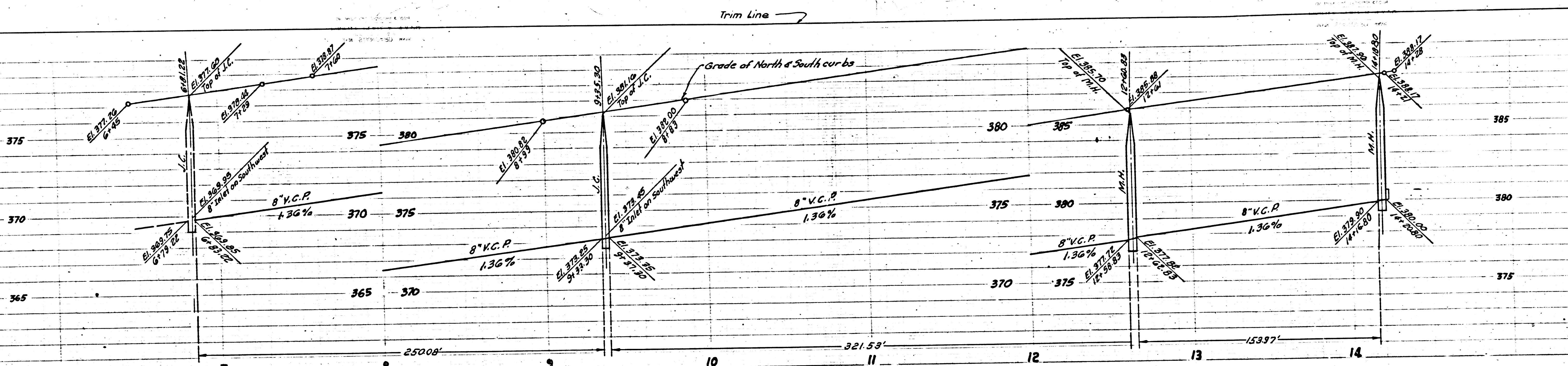
PREPARED IN THE OFFICES OF
KEMMERER ENGINEERING CO. INC.

[Signature]
Reg. C. E. No. 8244

FOR LEGEND SEE PLAN NO. S-a-64

NOTE:
Grades to which this improvement is to be constructed are shown on plans and profiles. Grade points for top of curbs, center line of streets, or center line of alleys are shown by circles on profiles. At all points between designated points the grade shall be established so as to conform to a straight line drawn between said designated points.
Elevations are in feet above U.S.G.S. datum or mean sea level.
This drawing and the data hereon are hereby made a part of the specifications.
Work shall be constructed according to specifications on file in the office of the County Engineer and shall be prosecuted only in the presence of the County Engineer.
Before work can be started, the contractor must obtain a permit to excavate in County streets from the L.A. County Road Dept., 108 W. 2nd St. and make a deposit with the County Engineer, 133 L.A. County Engineering Building, sufficient to cover the cost of construction inspection and record plans.
Approval of this plan by the County of Los Angeles does not constitute a representation as to the accuracy of the location of or the existence or non-existence of any underground utility, pipe, or structure within the limits of this project. This note applies to all sheets.
If work is to be done in a State Highway, a permit must be obtained from the State of California, Division of Highways, 120 South Spring Street.

COUNTY OF LOS ANGELES, CALIFORNIA
Approved, William J. Fox, County Engineer Approved, A. M. Rawns
By: *[Signature]* CHIEF ENGR. CO. SAN. DIST. NO. 21
By: *[Signature]* Office Engineer
Checked by: *[Signature]* Date 2-22-55
Office of County Engineer, Reg. C. E. No. 7862

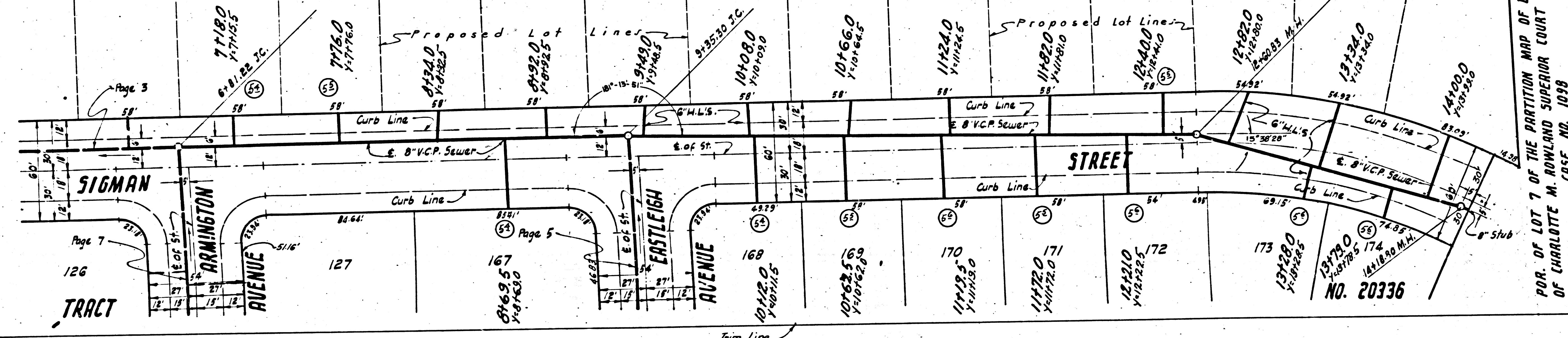


PAGE 2
P.C. 3380

NO CHARGE FOR
CONNECTIONS

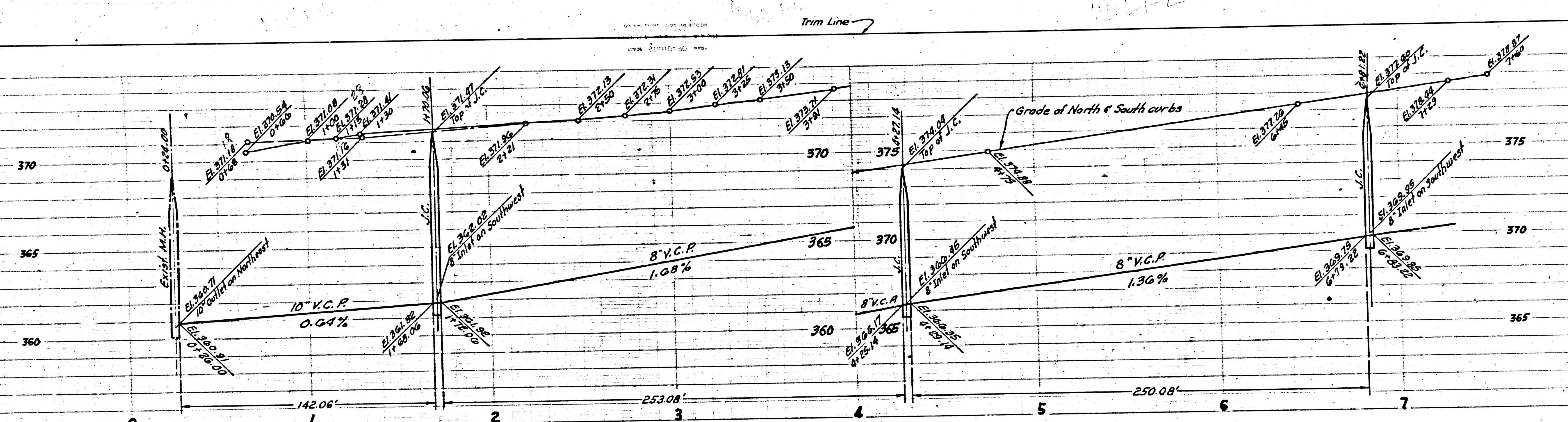
20,768

POR. OF LOT 7 OF THE PARTITION MAP OF LANDS OF CHARLOTTE M. ROWLAND SUPERIOR COURT CASE NO. 1098



POR. OF LOT 7 OF THE PARTITION MAP OF LANDS OF CHARLOTTE M. ROWLAND SUPERIOR COURT CASE NO. 1098

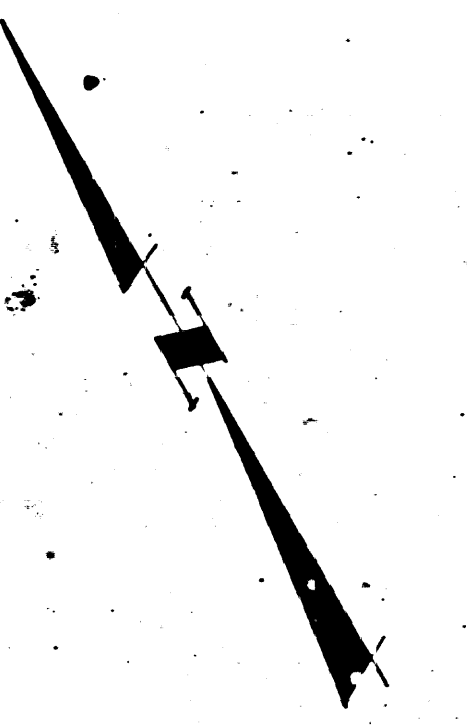
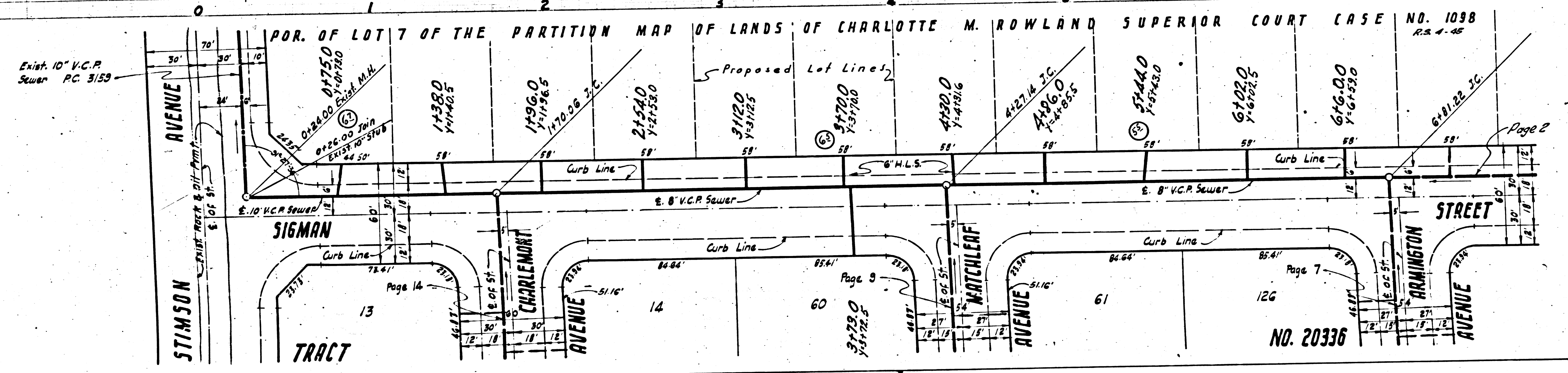




PAGE 3
P.C. 3380

NO CHARGE FOR CONNECTIONS

20,769



STIMMONS AVENUE, SIGMAN TRACT, CHARLEMONT AVENUE, WATERLEAF AVENUE, ARMINGTON STREET, NO. 20336

POR. OF LOT 7 OF THE PARTITION MAP OF LANDS OF CHARLOTTE M. ROWLAND SUPERIOR COURT CASE NO. 1098

Proposed Lot Lines

Trim Line

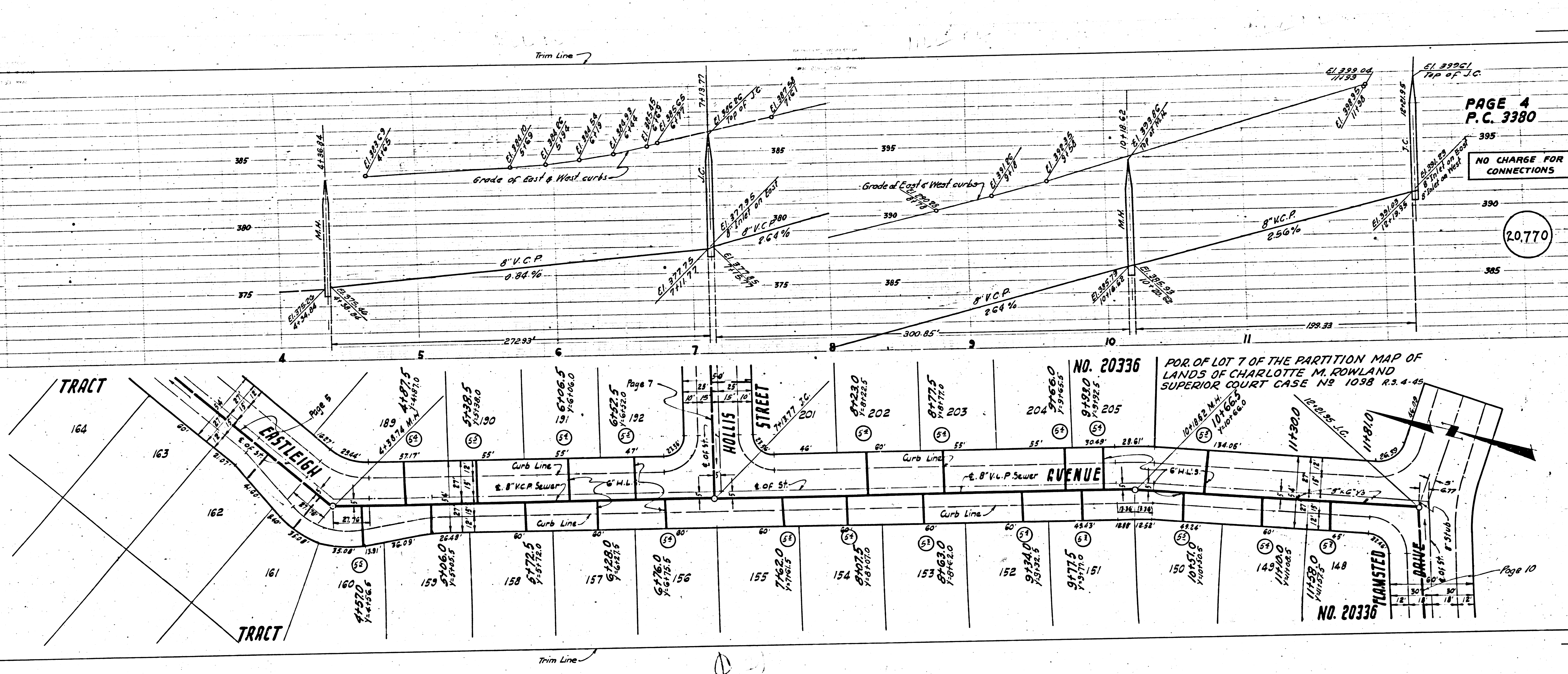
Exist. 10" V.C.P. Sewer P.C. 3159

Page 14

Page 3

Page 7

Page 2



PAGE 4
P.C. 3380

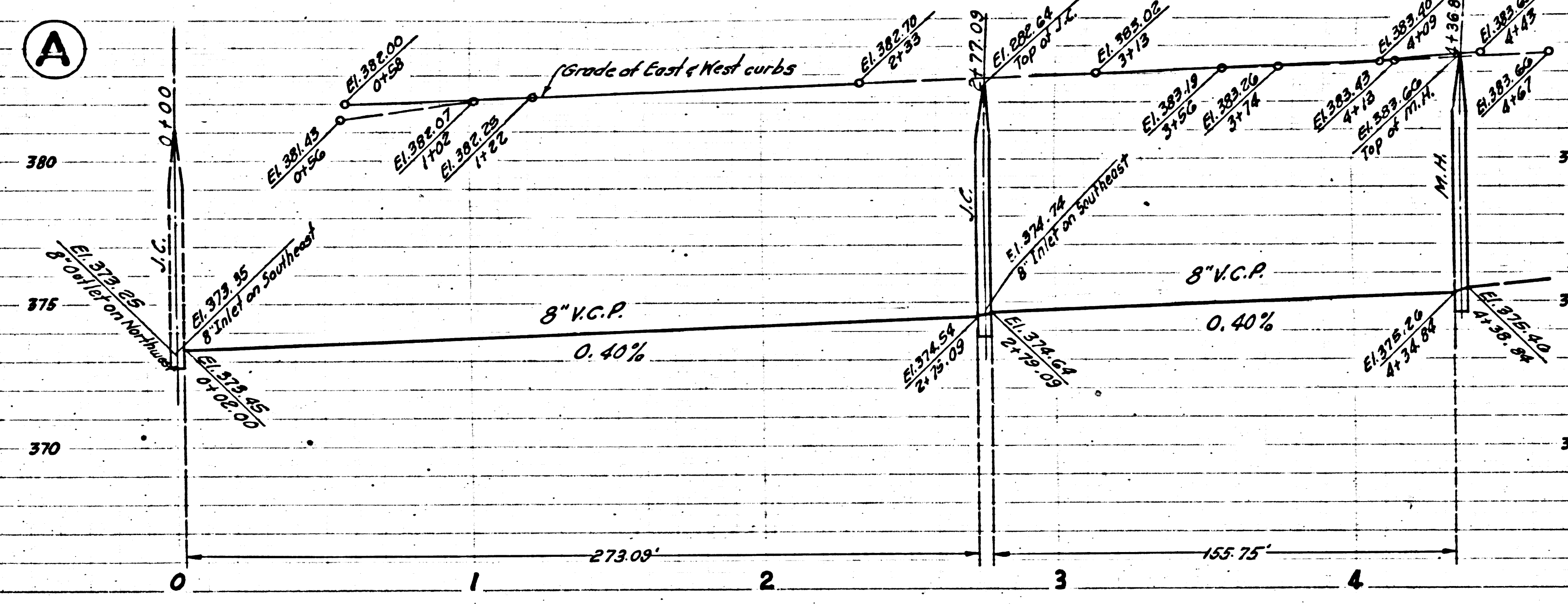
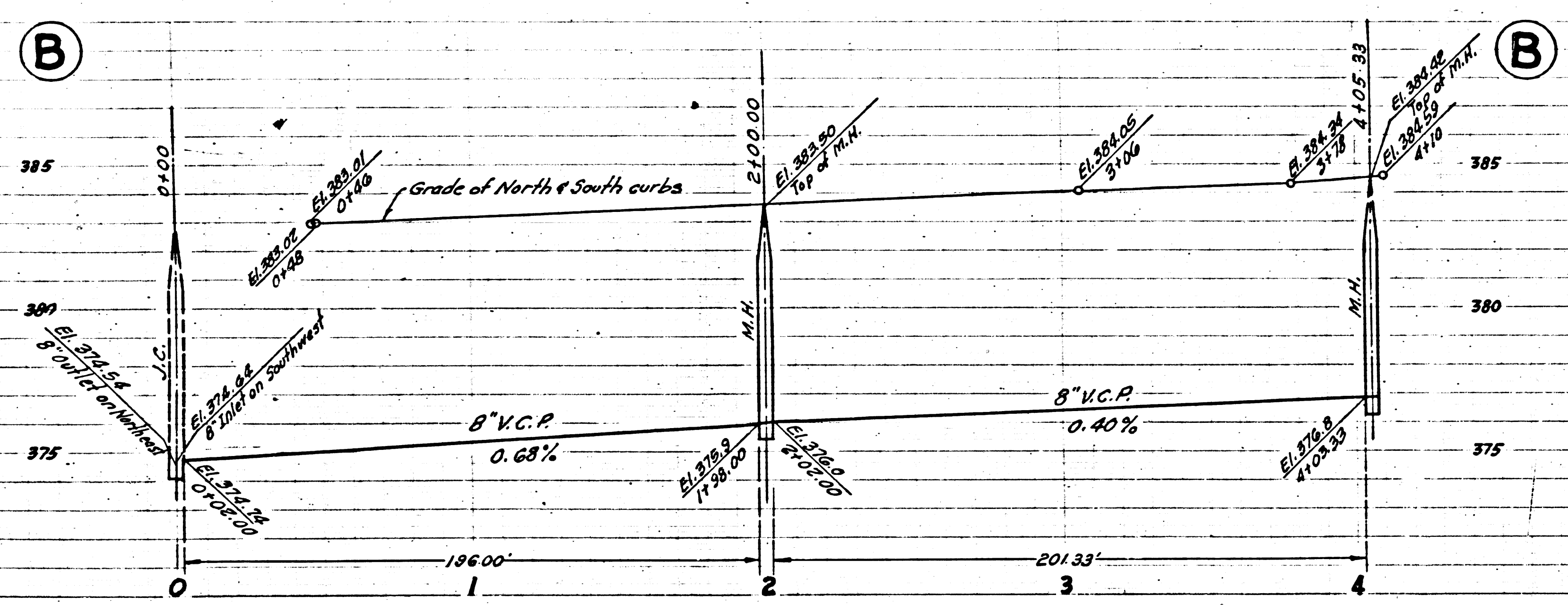
NO CHARGE FOR CONNECTIONS

20.770

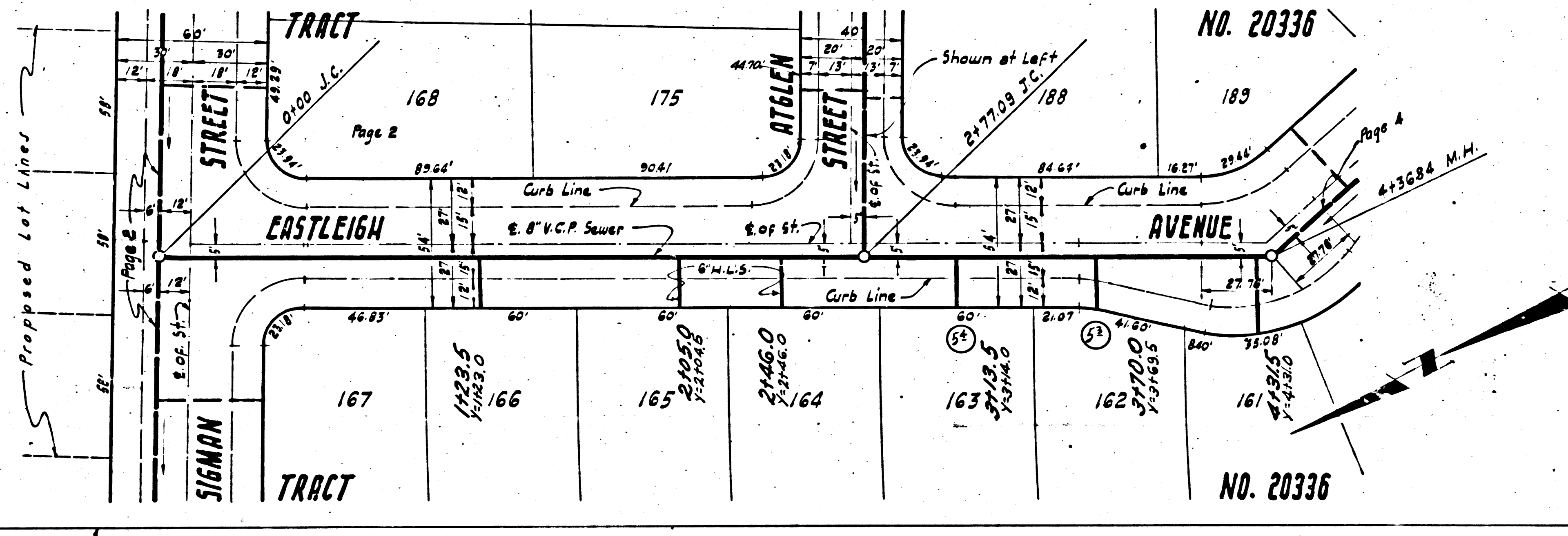
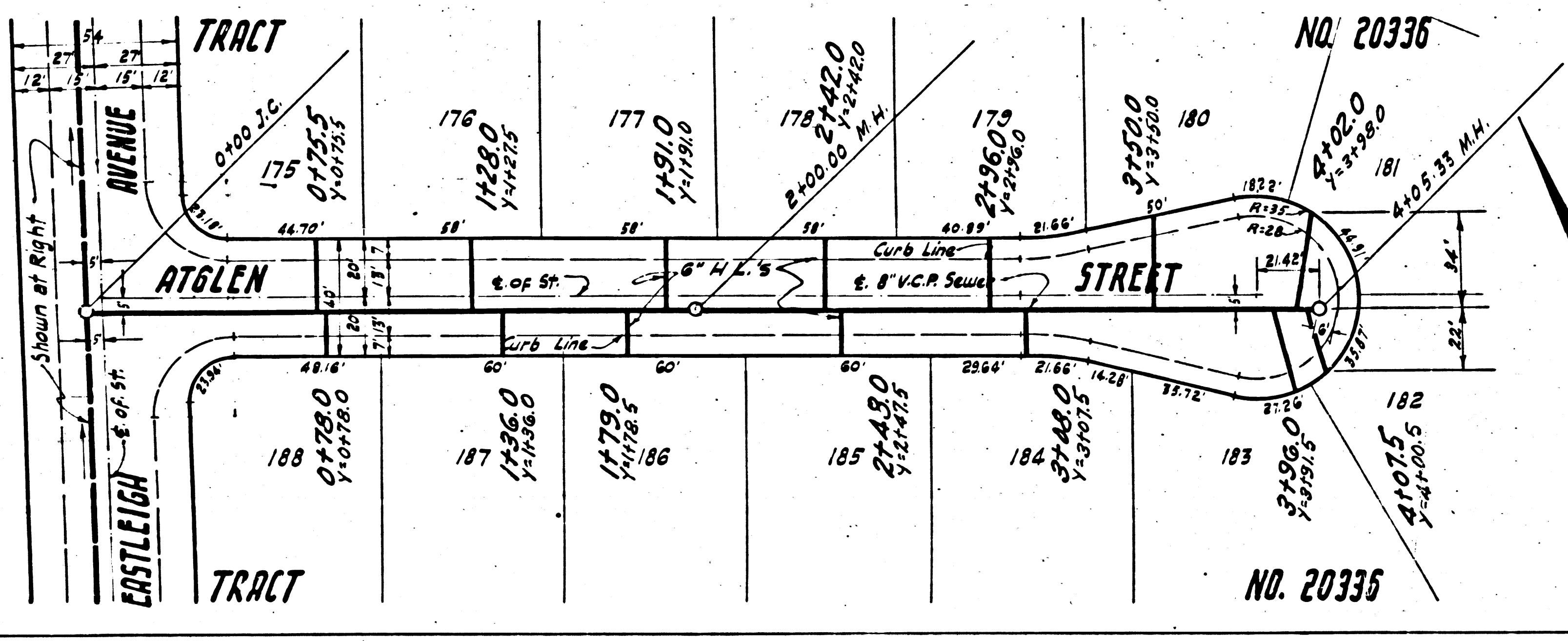
NO. 20336
POR. OF LOT 7 OF THE PARTITION MAP OF LANDS OF CHARLOTTE M. ROWLAND SUPERIOR COURT CASE NO. 1038 R.2.4-45

NO. 20336

Page 10

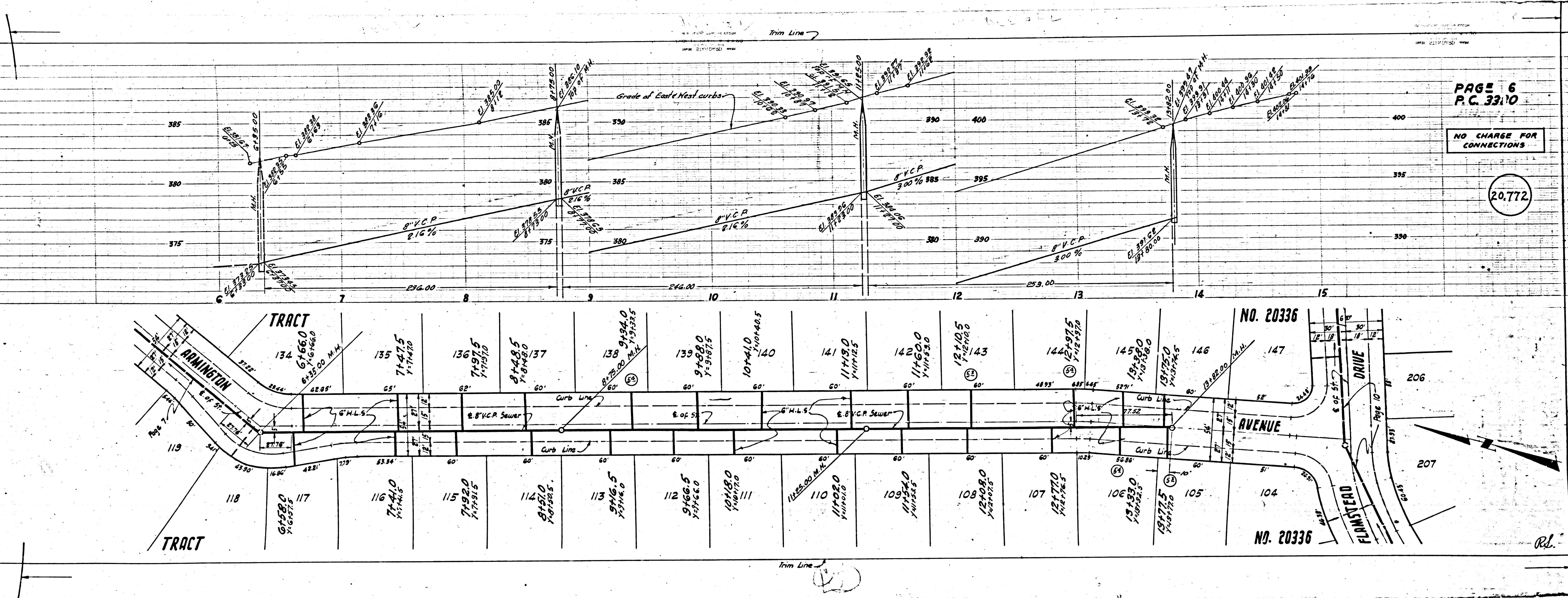


A
 PAGE 5
 P.C. 3380
 NO CHARGE FOR
 CONNECTIONS
 20.771



PC 3380

Trim Line



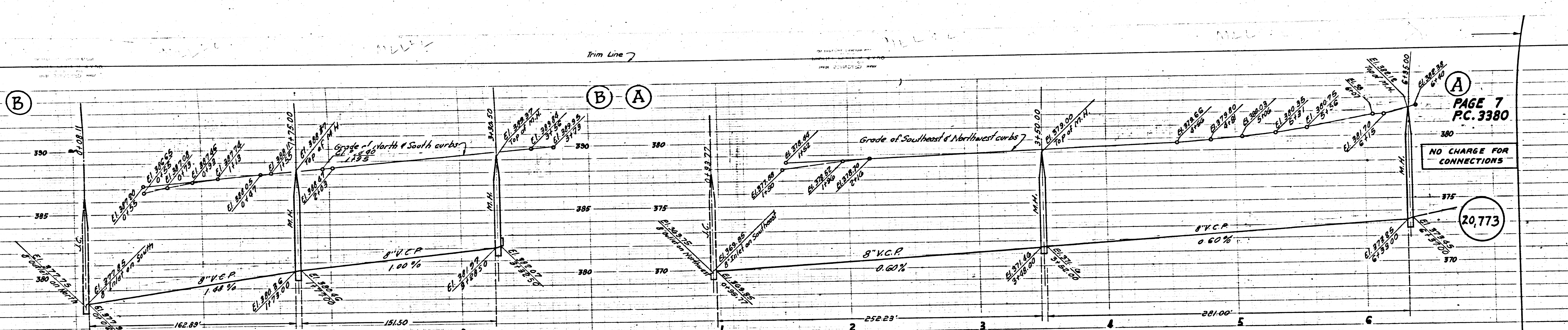
PAGE 6
P.C. 3310

NO CHARGE FOR
CONNECTIONS

20,772



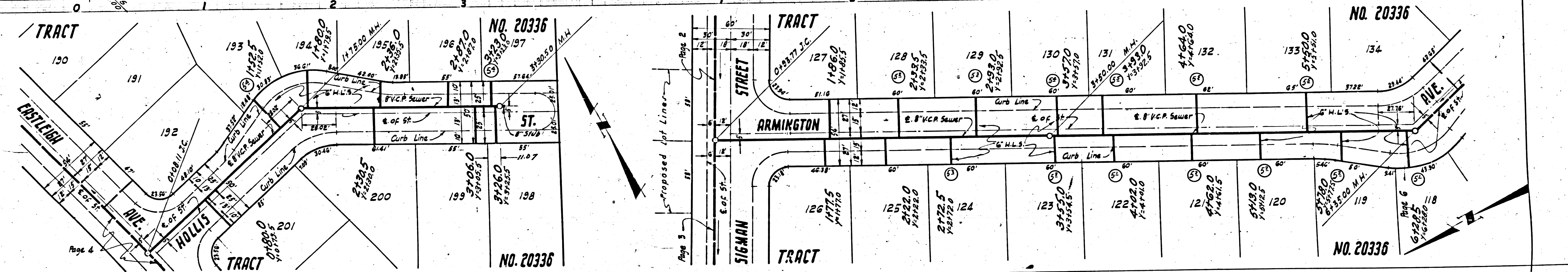
Rd.



PAGE 7
P.C. 3380

NO CHARGE FOR CONNECTIONS

20,773



Page 4

Trim Line

Proposed Lot Lines

Page 6

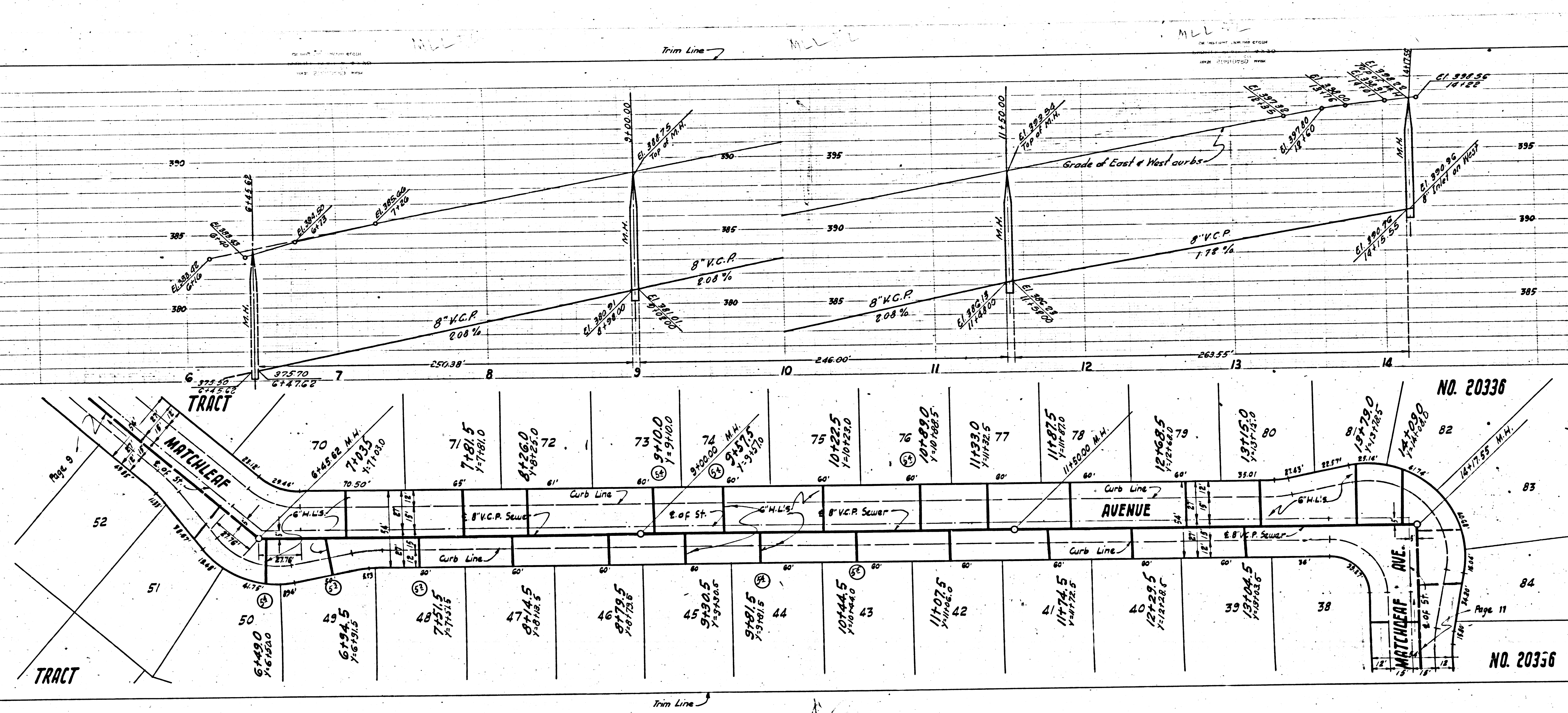
Trim Line

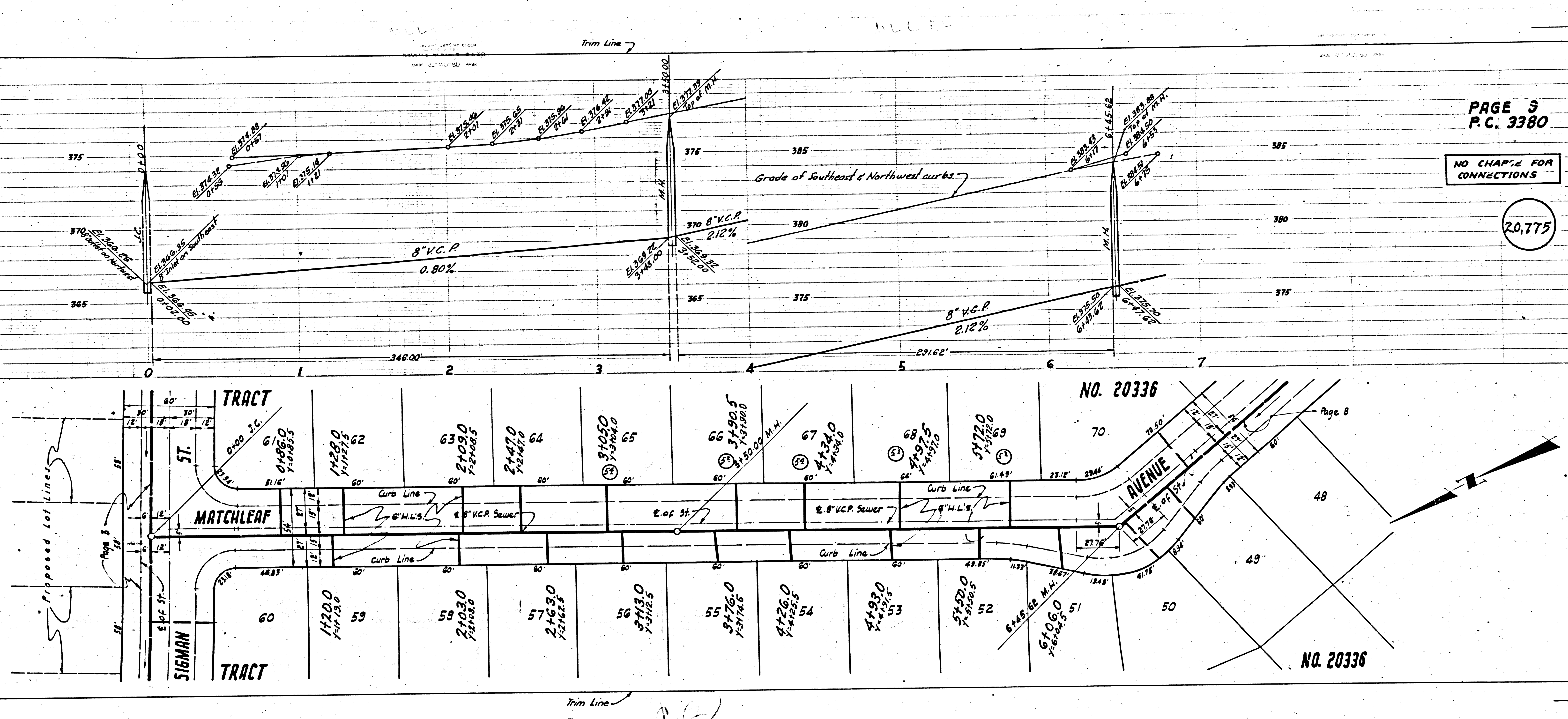
Trim Line

PAGE 8
P.C. 3380

NO CHARGE FOR
CONNECTIONS

20,774





PAGE 3
P.C. 3380

NO CHANGE FOR CONNECTIONS

20,775

Trim Line 7

NO. 20336

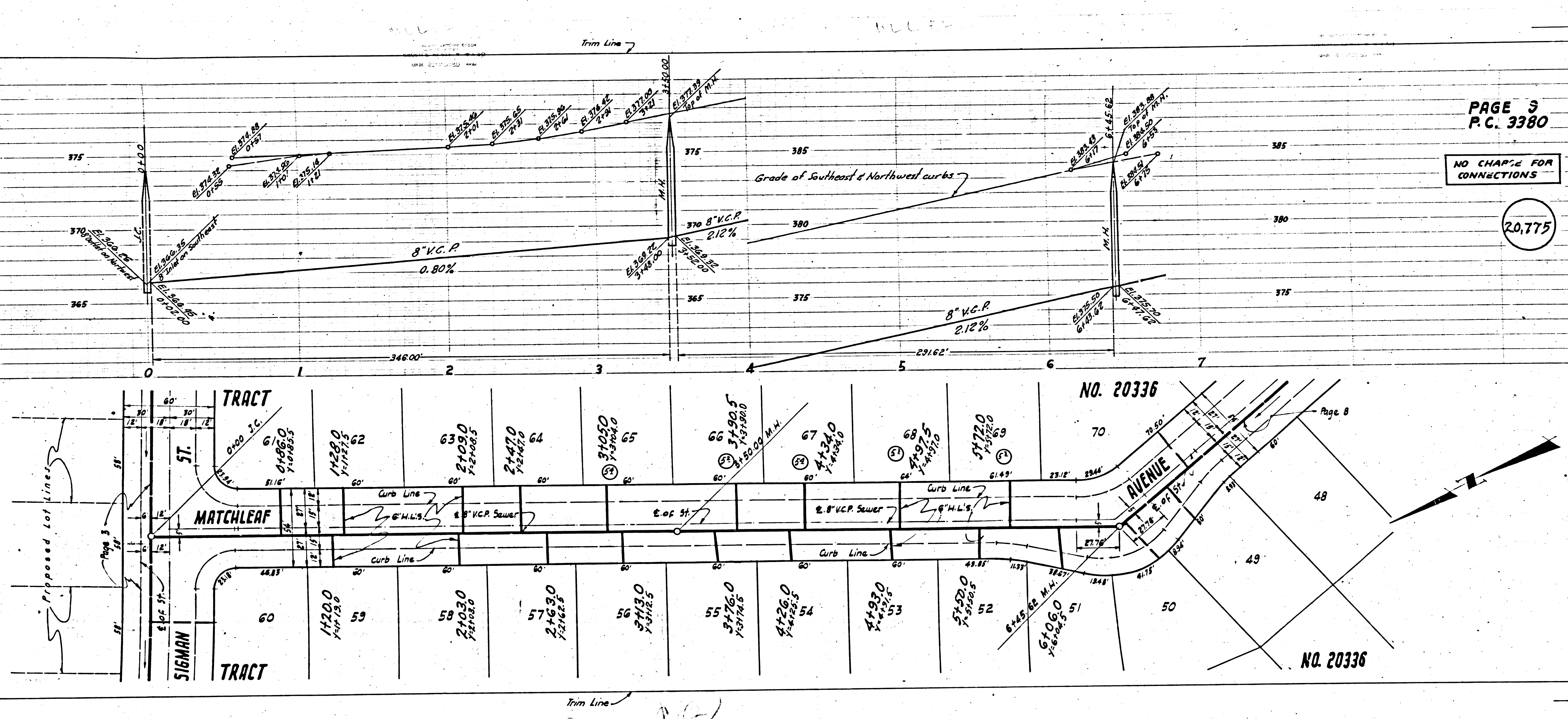
NO. 20336

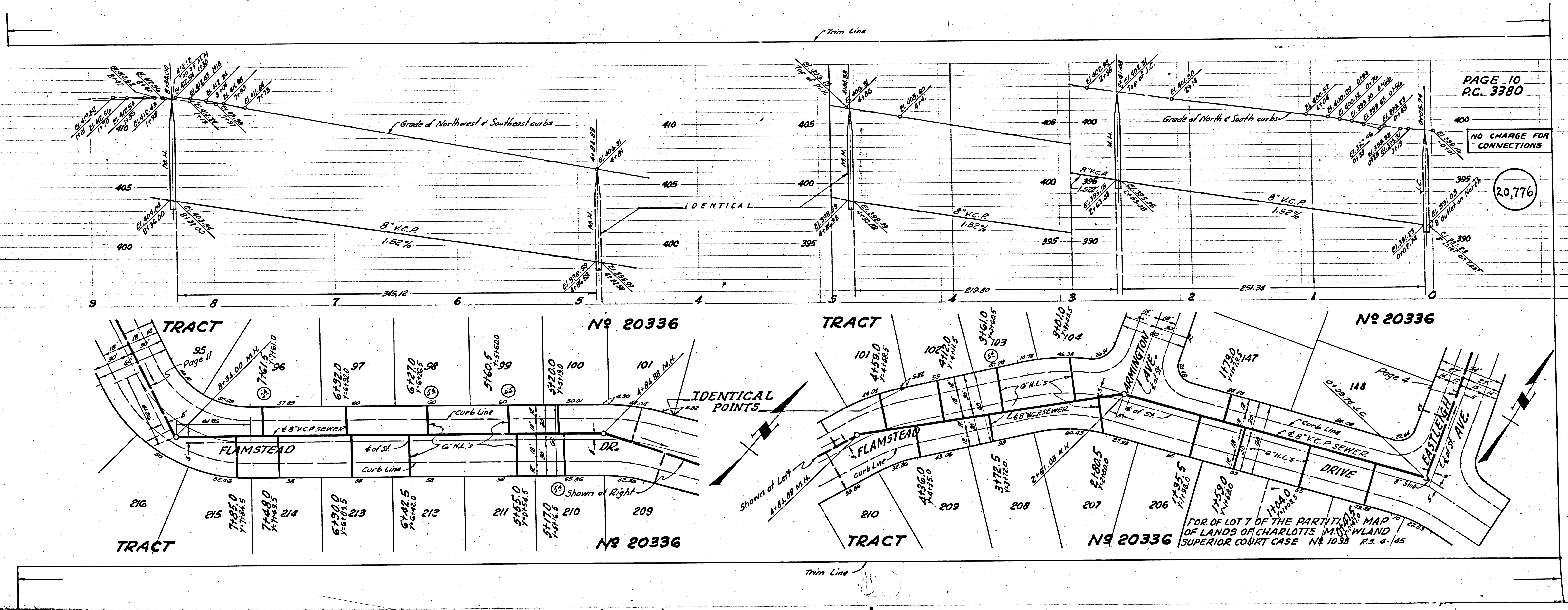
Trim Line

20

Proposed Lot Lines

Page 8





PAGE 10
R.C. 3380

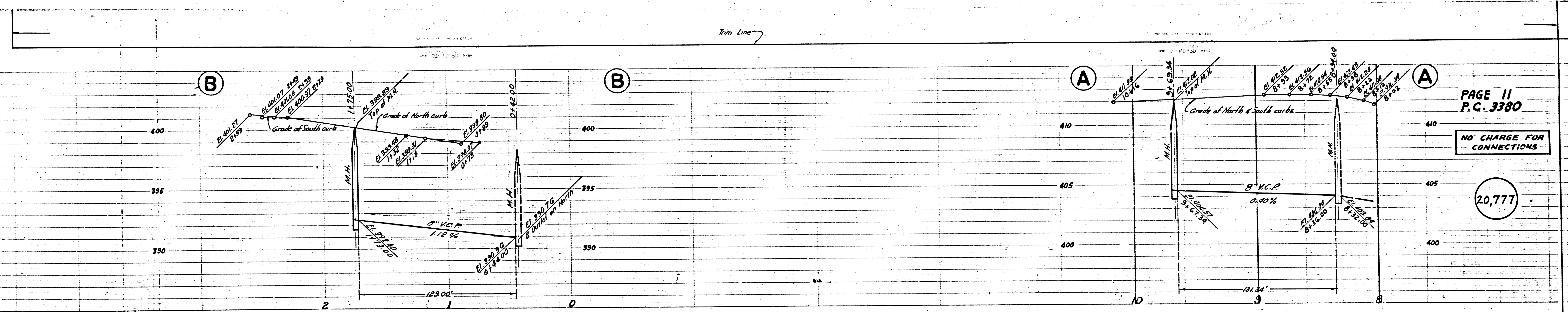
NO CHARGE FOR CONNECTIONS

20,776

Page 12
P.C. 3380

NO CHARGE FOR CONNECTIONS

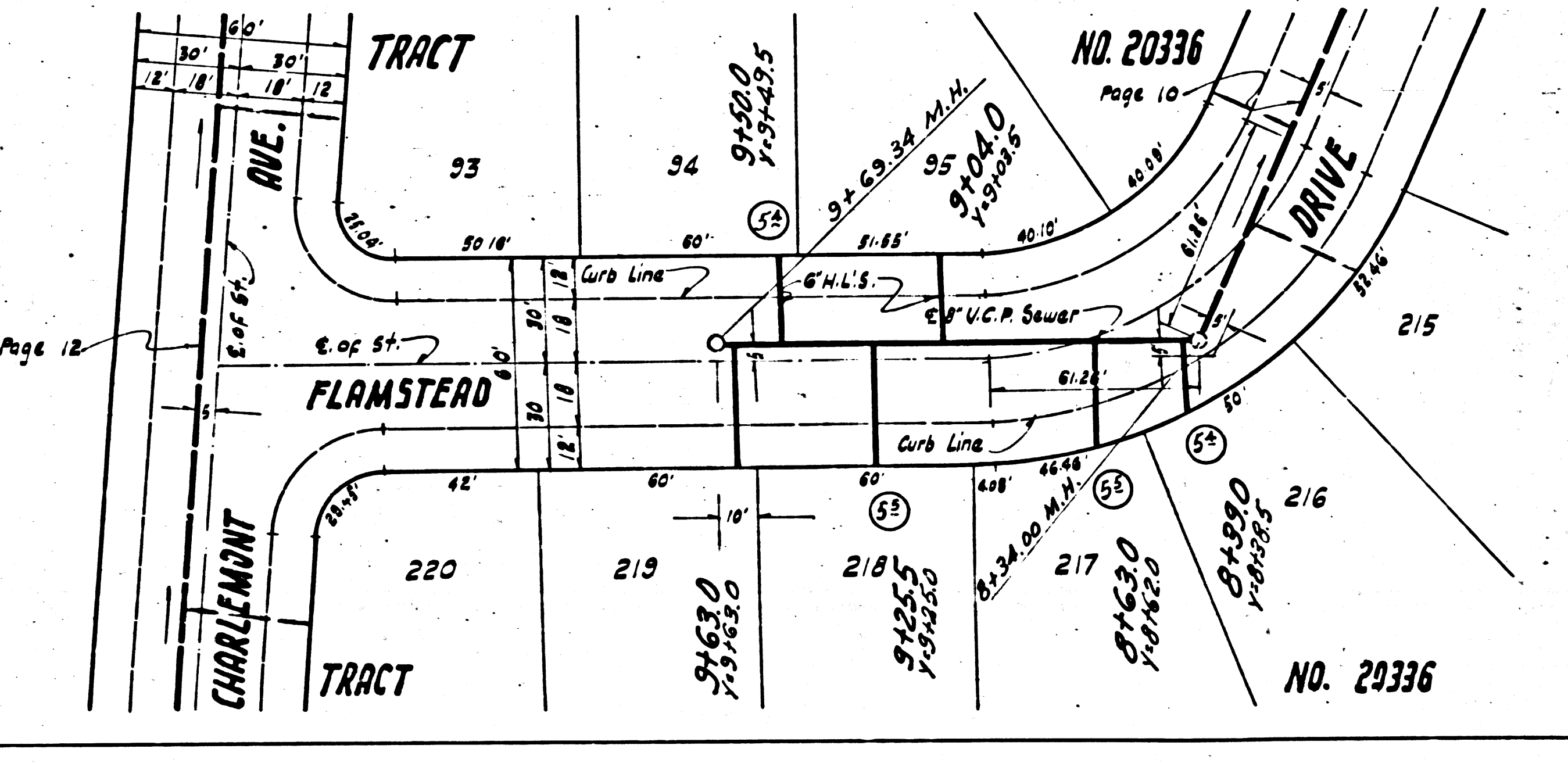
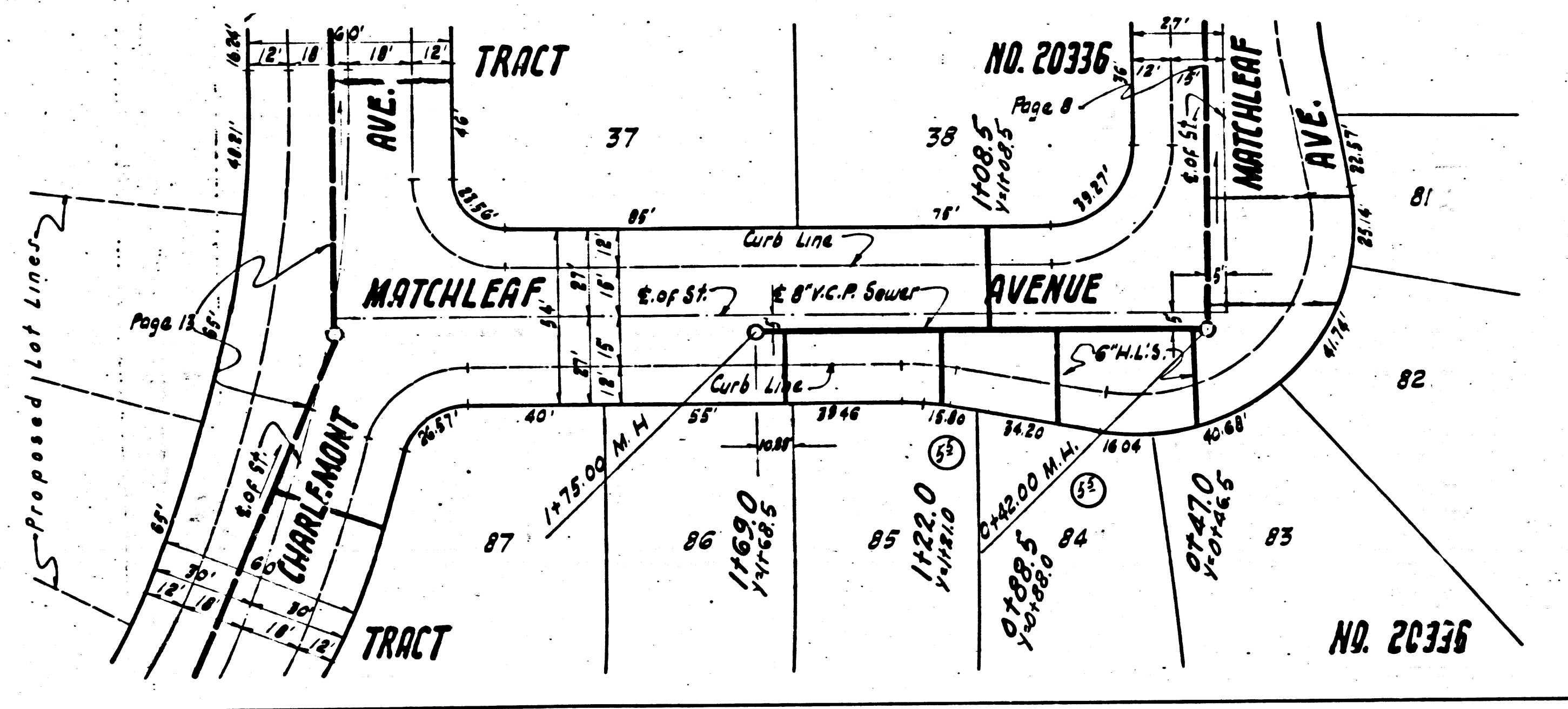
20,778



PAGE 11
P.C. 3380

NO CHARGE FOR CONNECTIONS

20,777



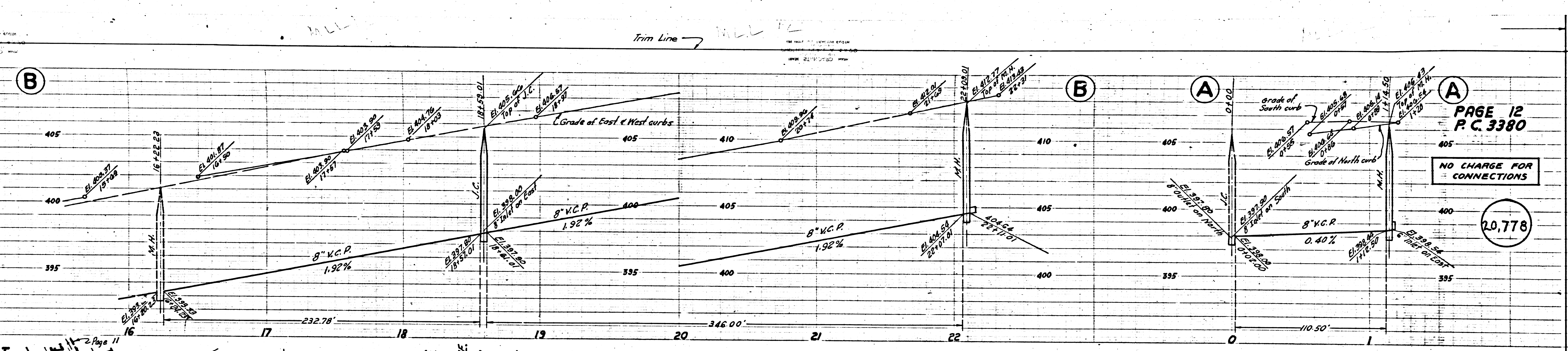
TRACT NO. 20336

TRACT NO. 20336

P.C. 3380

TRACT NO. 20336

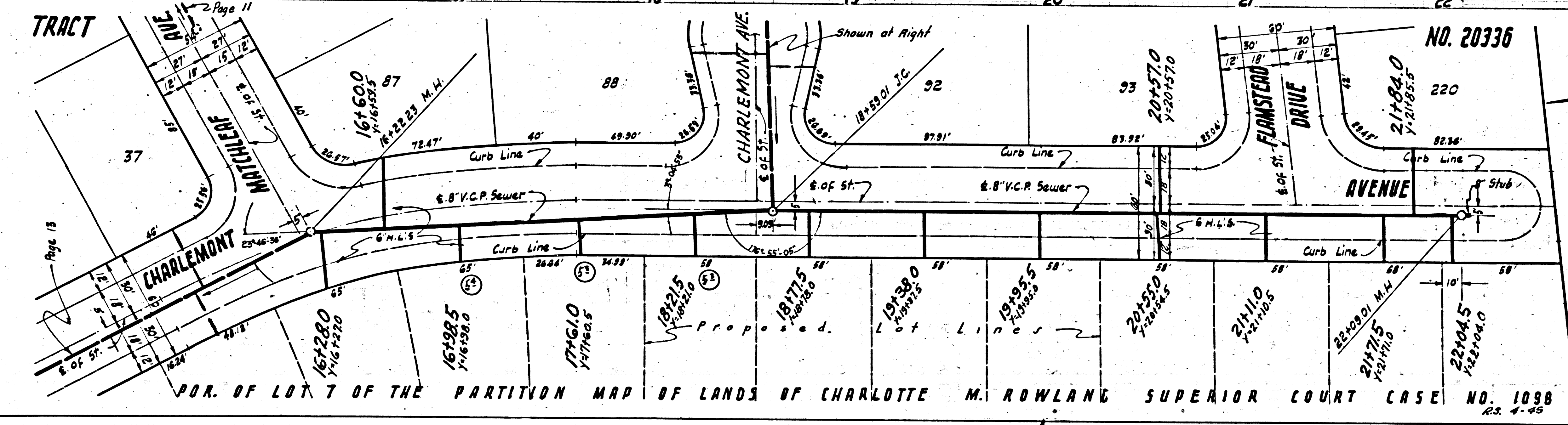
REL.



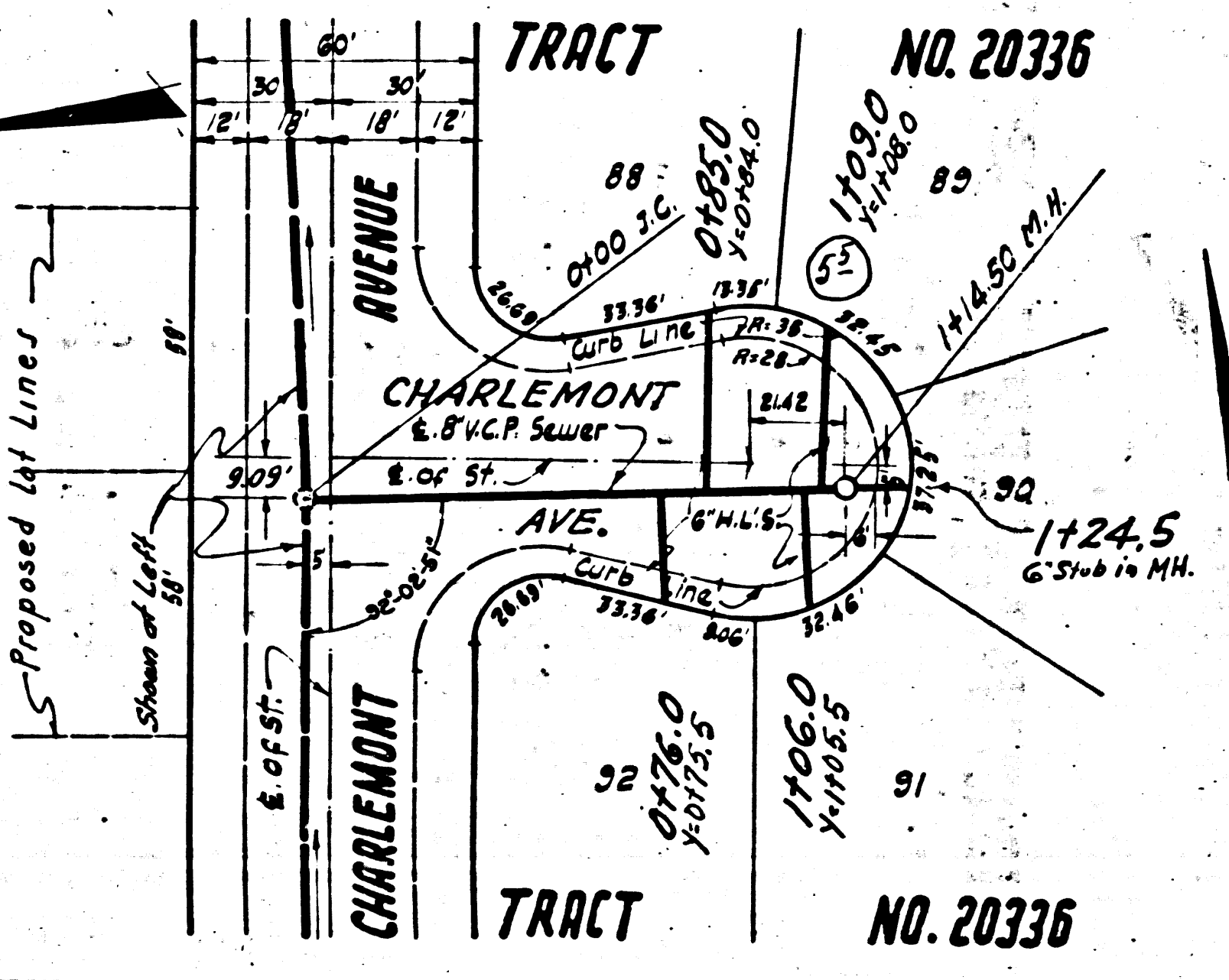
PAGE 12
P.C. 3380

NO CHARGE FOR
CONNECTIONS

20,778



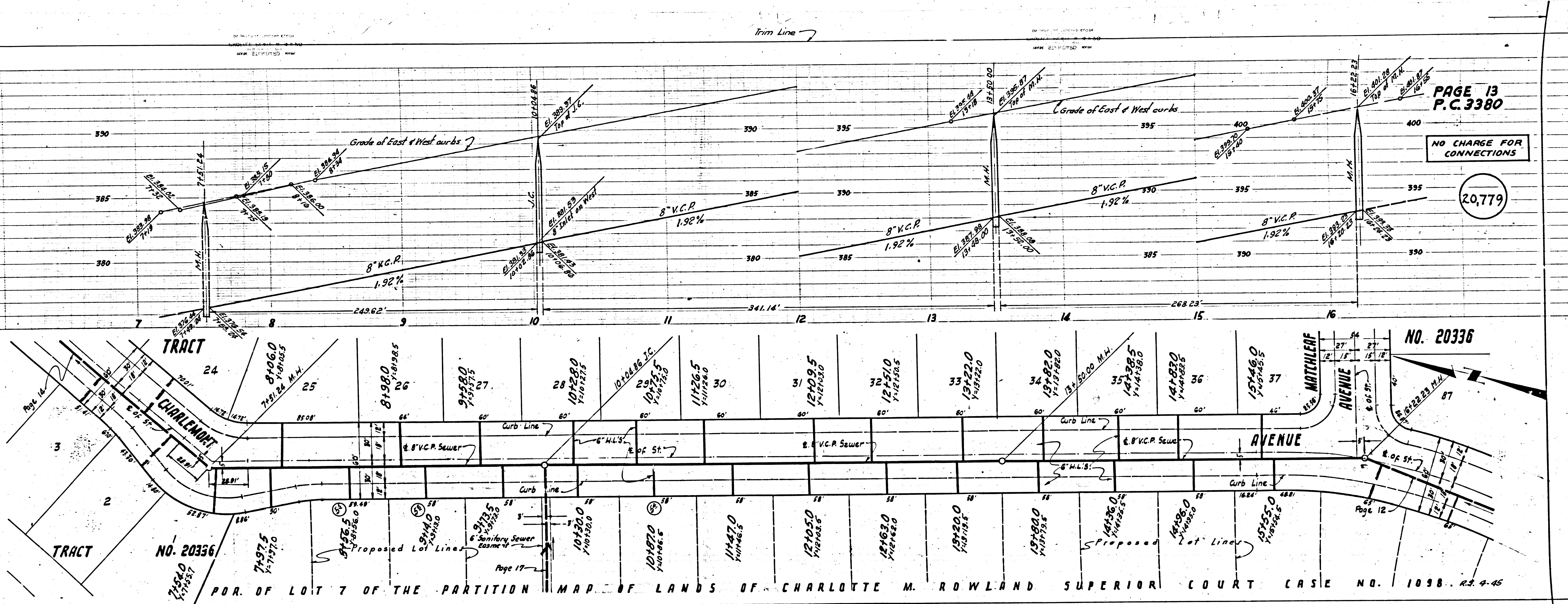
POR. OF LOT 7 OF THE PARTITION MAP OF LANDS OF CHARLOTTE M. ROWLAND SUPERIOR COURT CASE NO. 1098



NO. 20336

NO CHARGE FOR
CONNECTIONS

20,779

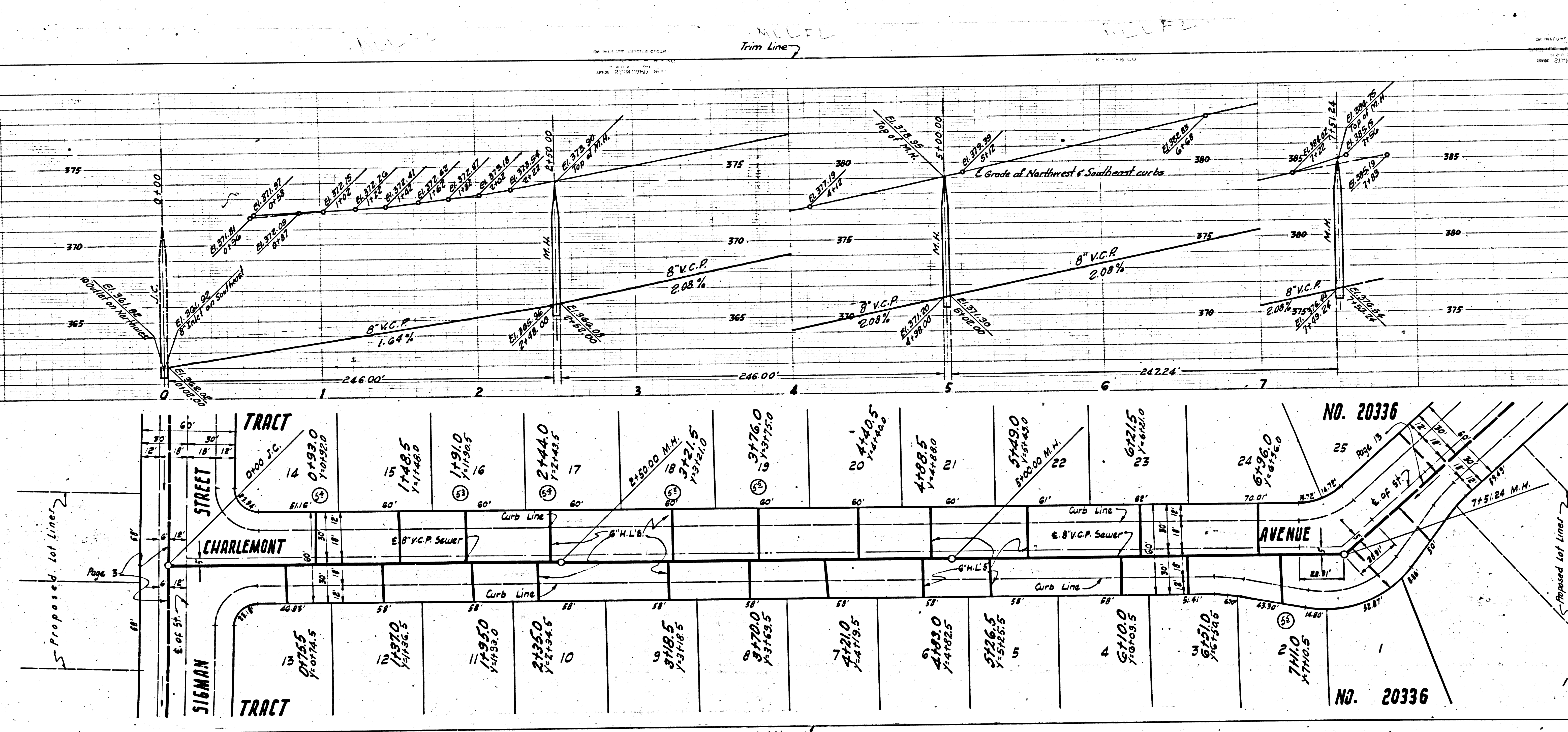


POR. OF LOT 7 OF THE PARTITION MAP OF LANDS OF CHARLOTTE M. ROWLAND SUPERIOR COURT CASE NO. 1098. R.S. 4-45

15
380

SEE FOR
CTIONS

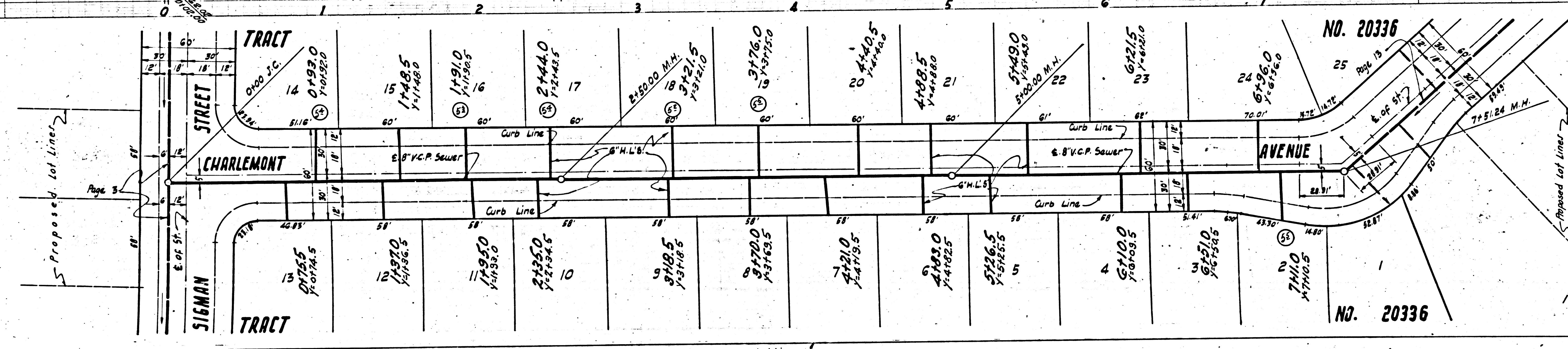
20,781



PAGE 14
P.C. 3380

NO CHARGE FOR
CONNECTIONS

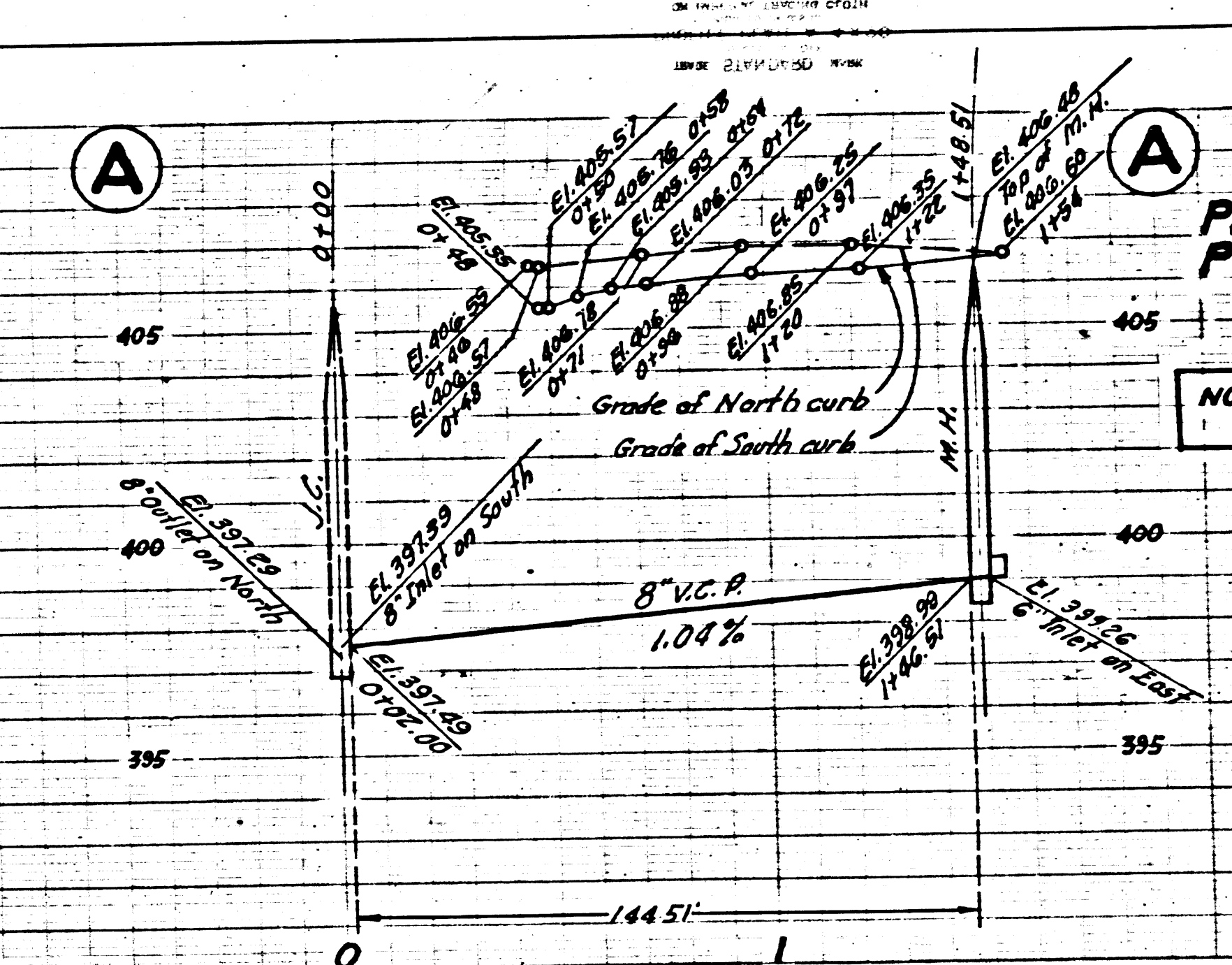
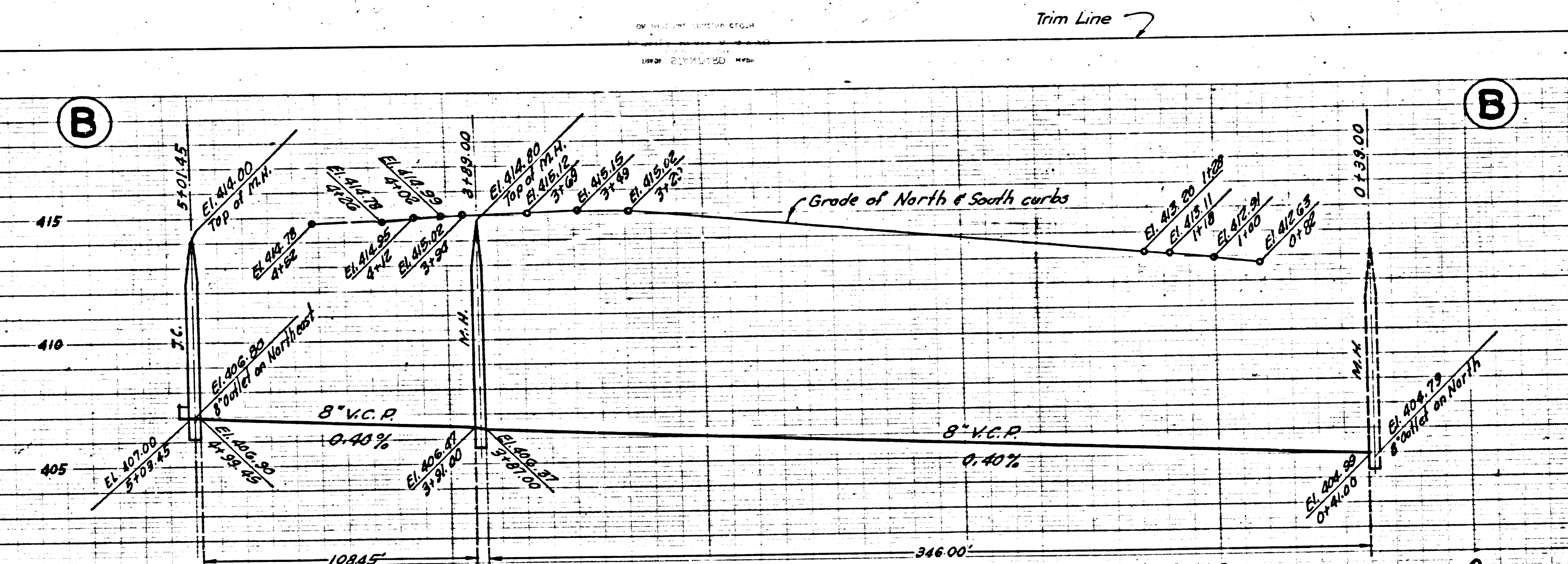
20,780



NO. 20336

NO. 20336

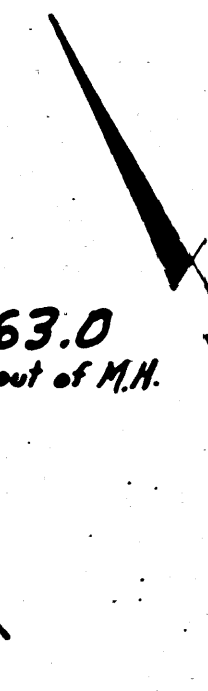
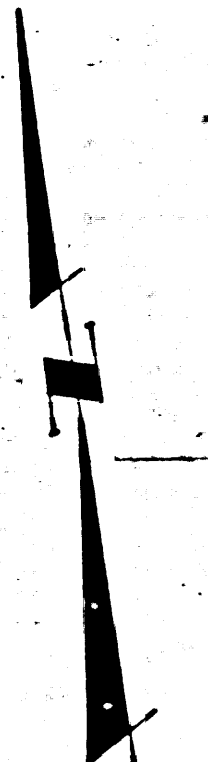
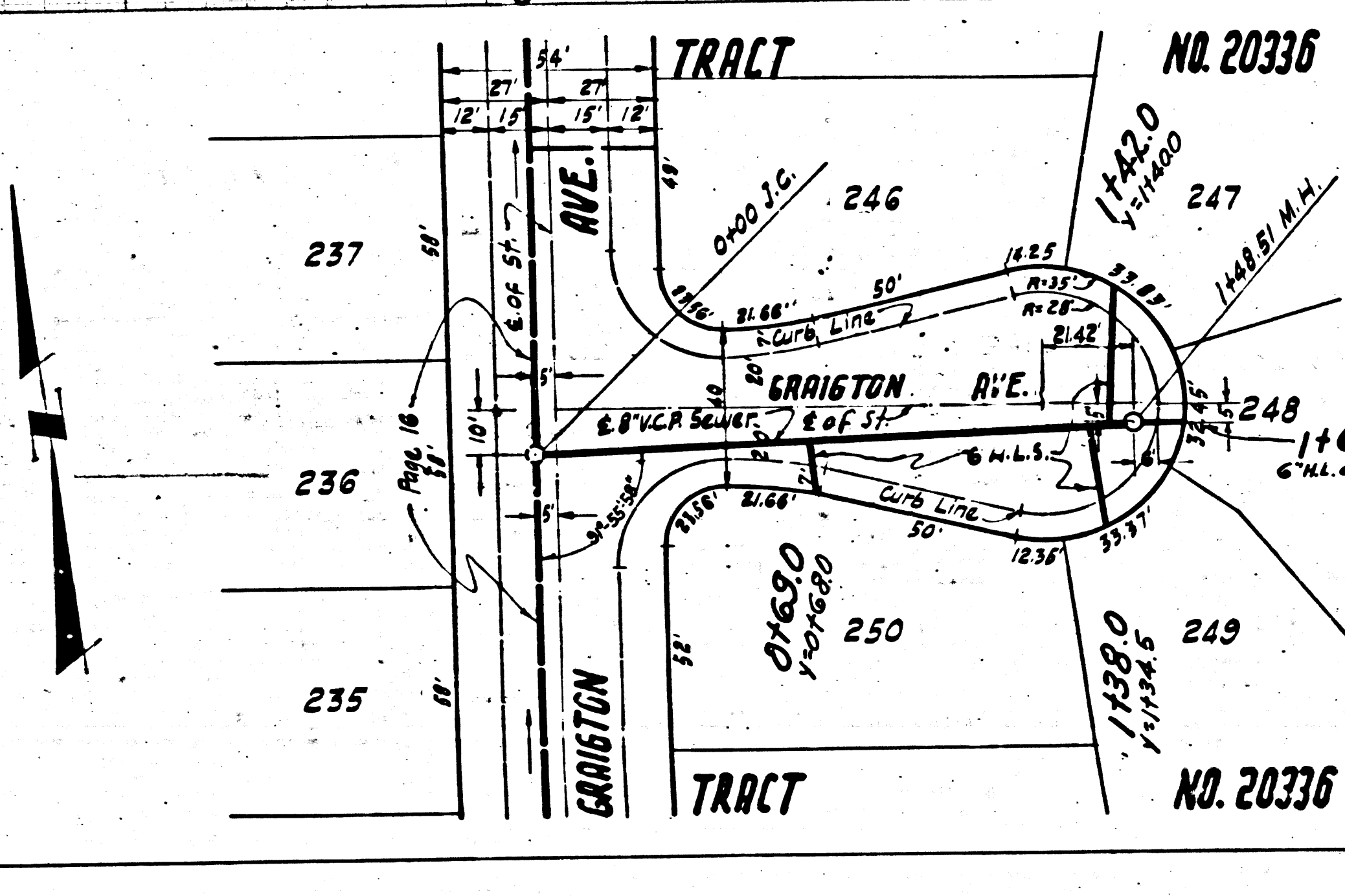
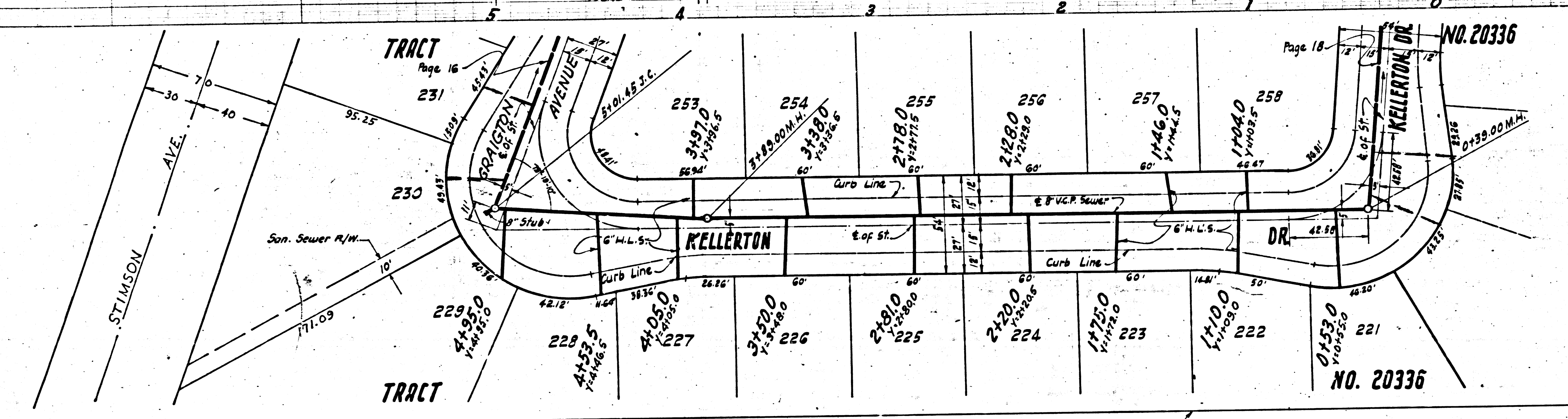
P.C. 3370

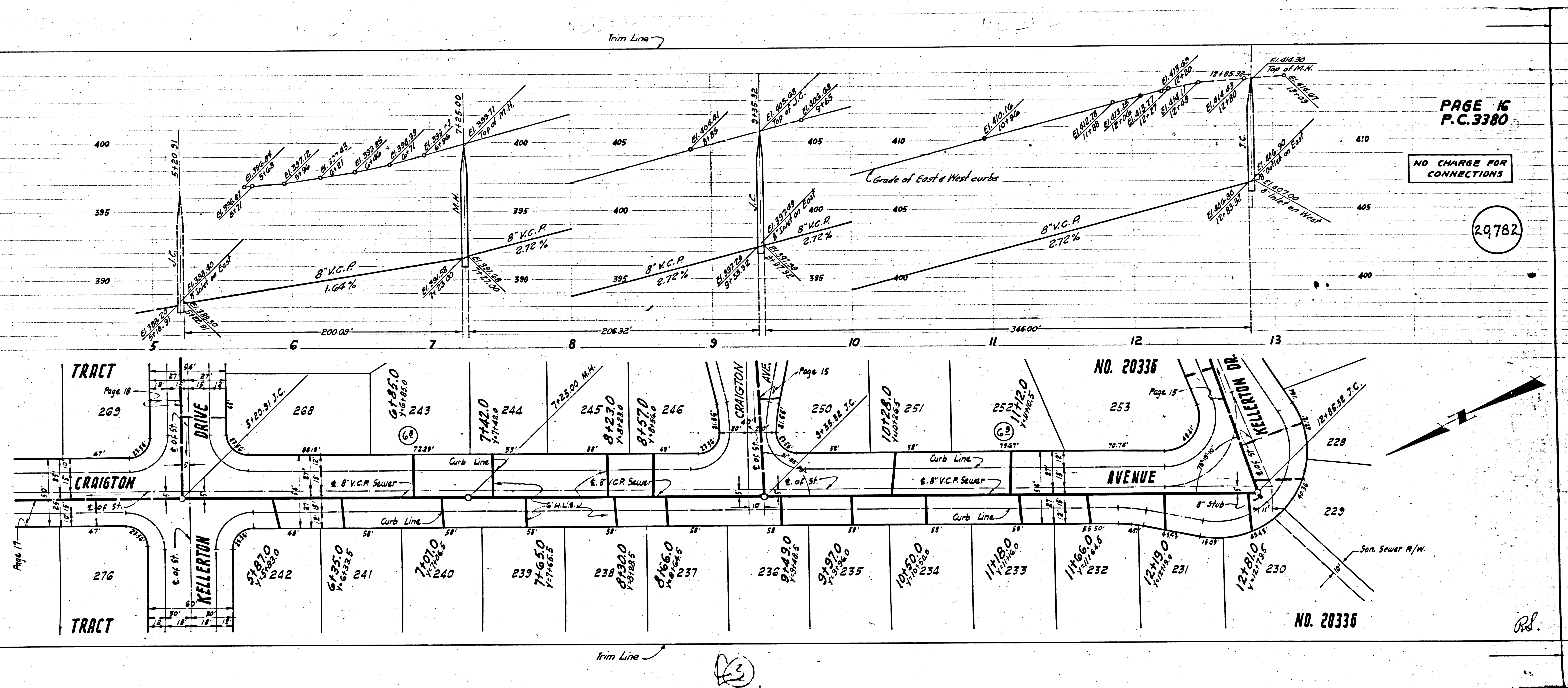


PAGE 15
P.C. 3380

NO CHARGE FOR
CONNECTIONS

20,781





PAGE 16
P.C. 3380

NO CHARGE FOR CONNECTIONS

29782

4

TRACT NO. 20336

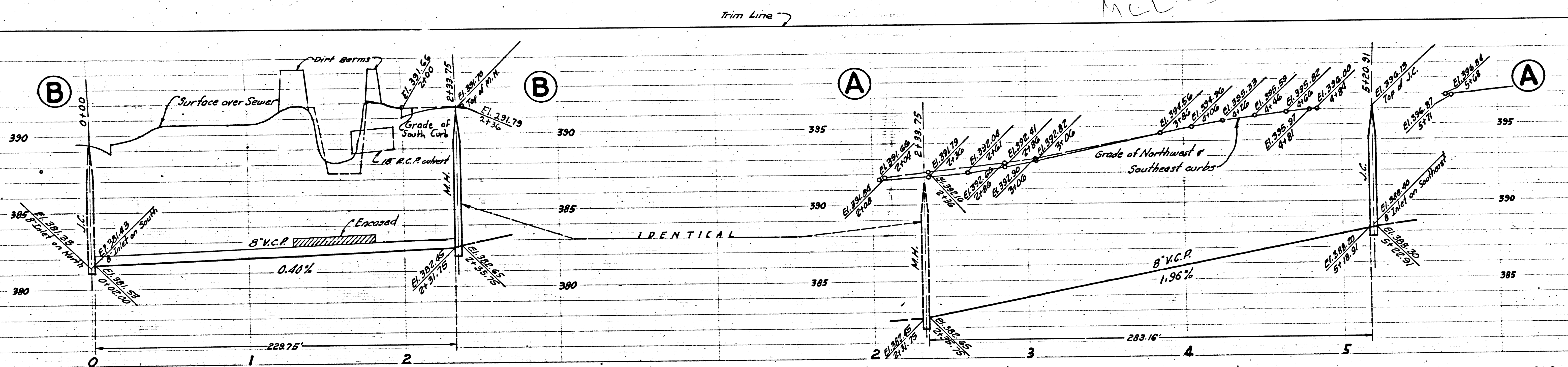
P.C. 3380

4



RS

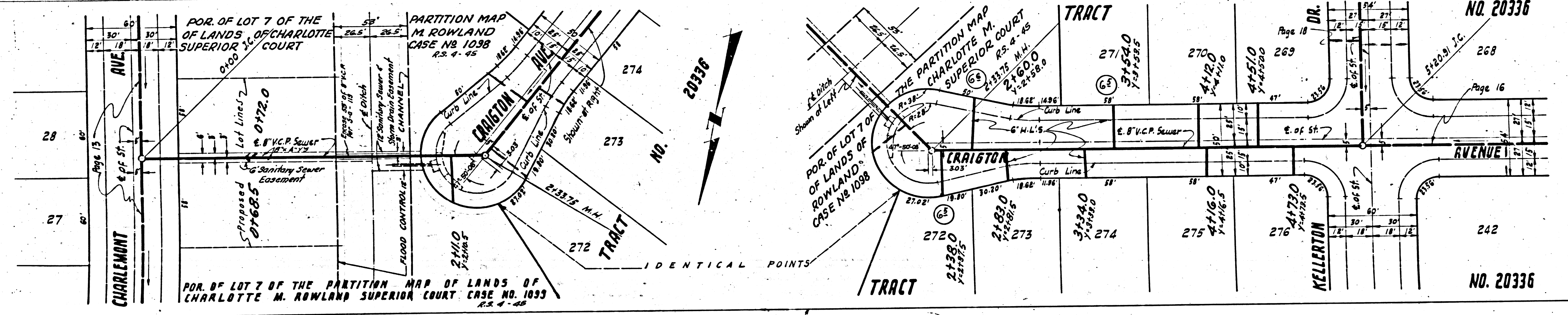
23



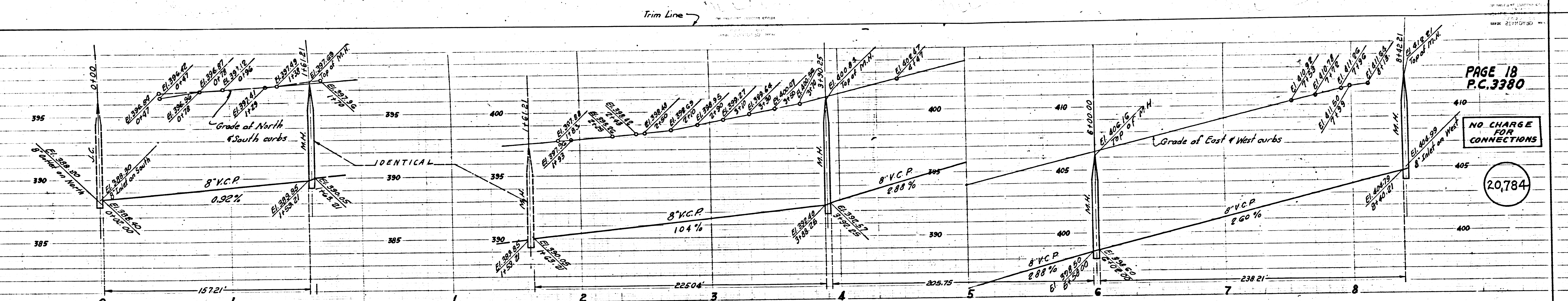
PAGE 17
P.C. 3380

NO CHARGE FOR
CONNECTIONS

20,783



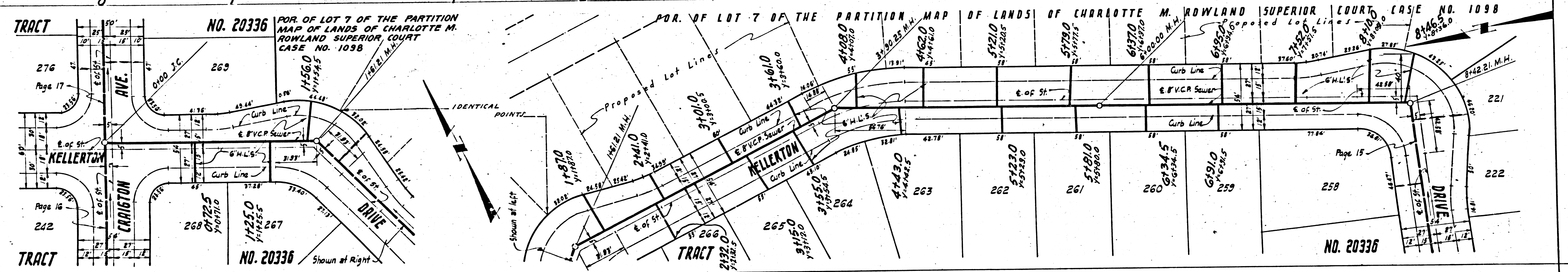
Trim Line



PAGE 18
P.C. 3380

NO CHARGE FOR CONNECTIONS

20784



TRACT NO. 20336
POR. OF LOT 7 OF THE PARTITION MAP OF LANDS OF CHARLOTTE M. ROWLAND SUPERIOR COURT CASE NO. 1098

POR. OF LOT 7 OF THE PARTITION MAP OF LANDS OF CHARLOTTE M. ROWLAND SUPERIOR COURT CASE NO. 1098

NO. 20336

(B)

27

28

29