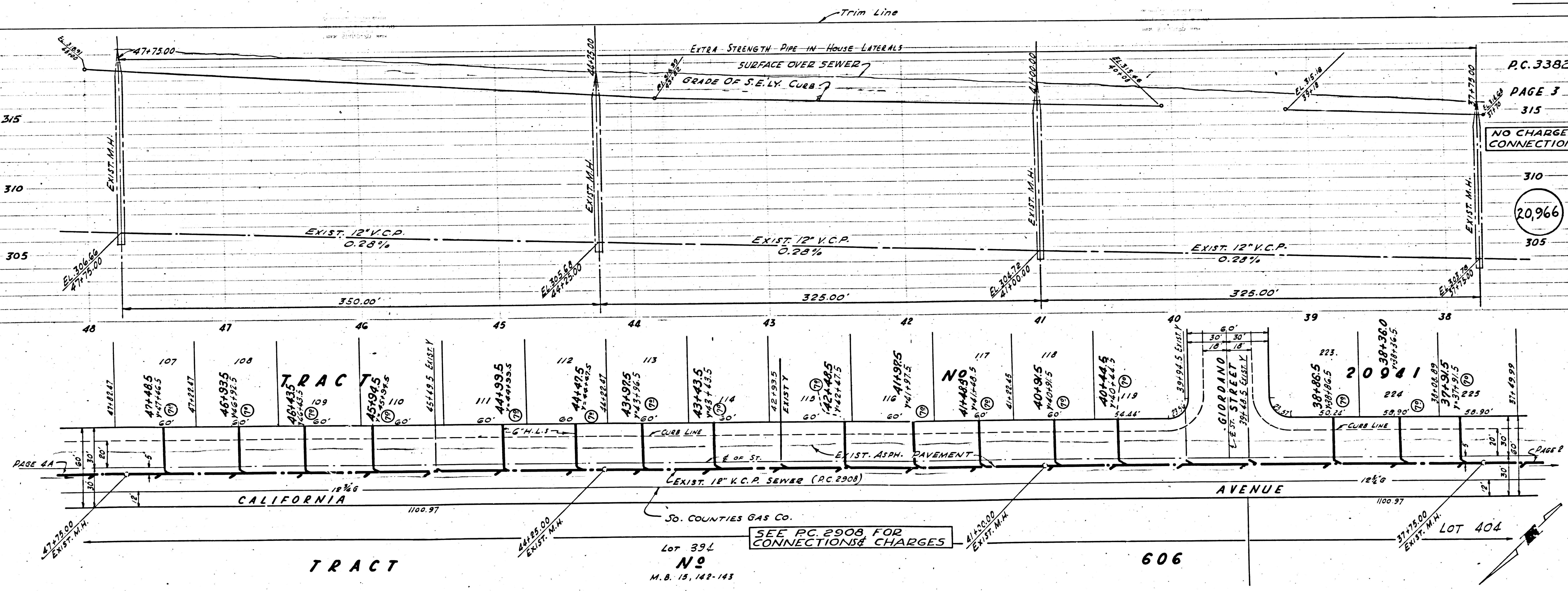


P.C. 3382  
PAGE 4  
NO CHARGE FOR CONNECTIONS  
20,967

P.C. 3382  
PAGE 3  
NO CHARGE FOR CONNECTIONS  
20,966



47129.47  
PAGE 3

LOT 404

TRACT

606

Lot 39L  
No  
M.B. 13, 142-143

SEE P.C. 2908 FOR CONNECTIONS & CHARGES

SO. COUNTIES GAS CO.

EXIST. 18" K.C.P. SEWER (P.C. 2908)

EXIST. ASPH. PAVEMENT

EXIST. 12" V.C.P.

EXIST. 12" V.C.P.

EXIST. 12" V.C.P.

EXIST. 12" V.C.P.

EXIST. 12" V.C.P.

EXIST. 12" V.C.P.

EXIST. 12" V.C.P.

EXIST. 12" V.C.P.

EXIST. 12" V.C.P.

EXIST. 12" V.C.P.

EXIST. 12" V.C.P.

EXIST. 12" V.C.P.

EXIST. 12" V.C.P.

EXIST. 12" V.C.P.

EXIST. 12" V.C.P.

EXIST. 12" V.C.P.

EXIST. 12" V.C.P.

EXIST. 12" V.C.P.

EXIST. 12" V.C.P.

EXIST. 12" V.C.P.

EXIST. 12" V.C.P.

EXIST. 12" V.C.P.

EXIST. 12" V.C.P.

EXIST. 12" V.C.P.

EXIST. 12" V.C.P.

EXIST. 12" V.C.P.

EXIST. 12" V.C.P.

EXIST. 12" V.C.P.

EXIST. 12" V.C.P.

EXIST. 12" V.C.P.

EXIST. 12" V.C.P.

EXIST. 12" V.C.P.

EXIST. 12" V.C.P.

EXIST. 12" V.C.P.

EXIST. 12" V.C.P.

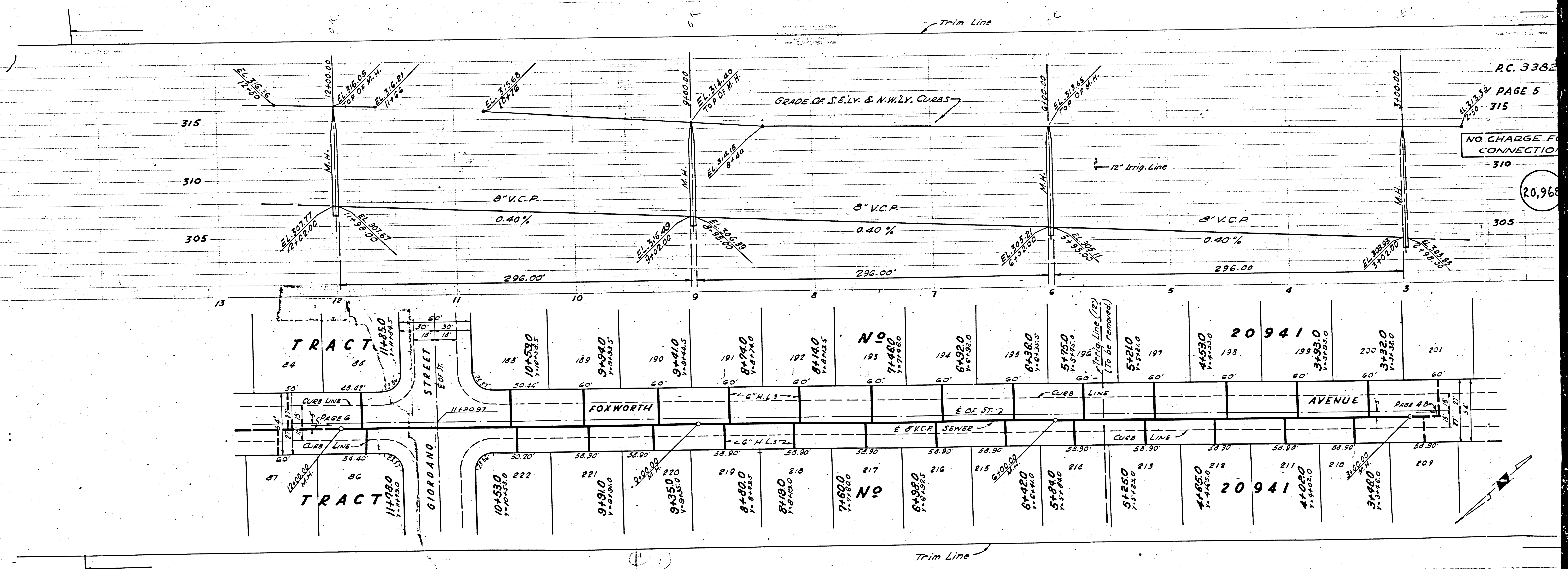
EXIST. 12" V.C.P.

EXIST. 12" V.C.P.

EXIST. 12" V.C.P.

EXIST. 12" V.C.P.

EXIST. 12" V.C.P.



P.C. 3382

PAGE 5

315

NO CHARGE FOR CONNECTION

310

305

20,968

PAGE 4 B

PAGE 4 B

PAGE 4 B

PAGE 4 B

PAGE 4 B

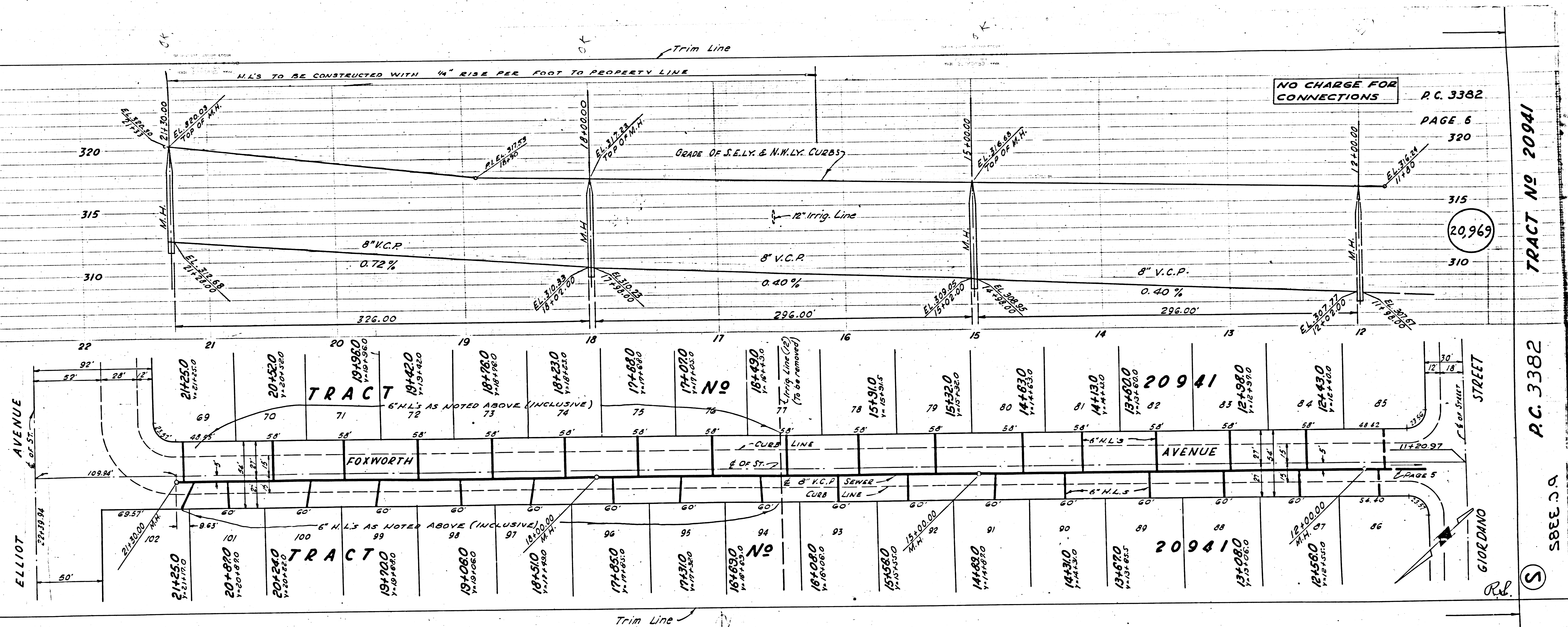
PAGE 4 B

P.C. 3382

PAGE 7

NO CHARGE FOR CONNECTIONS

(20,970)



NO CHARGE FOR CONNECTIONS

P.C. 3382

PAGE 6

320

315

(20,969)

310

TRACT NO 20941

P.C. 3382

SBEE & A

(S)

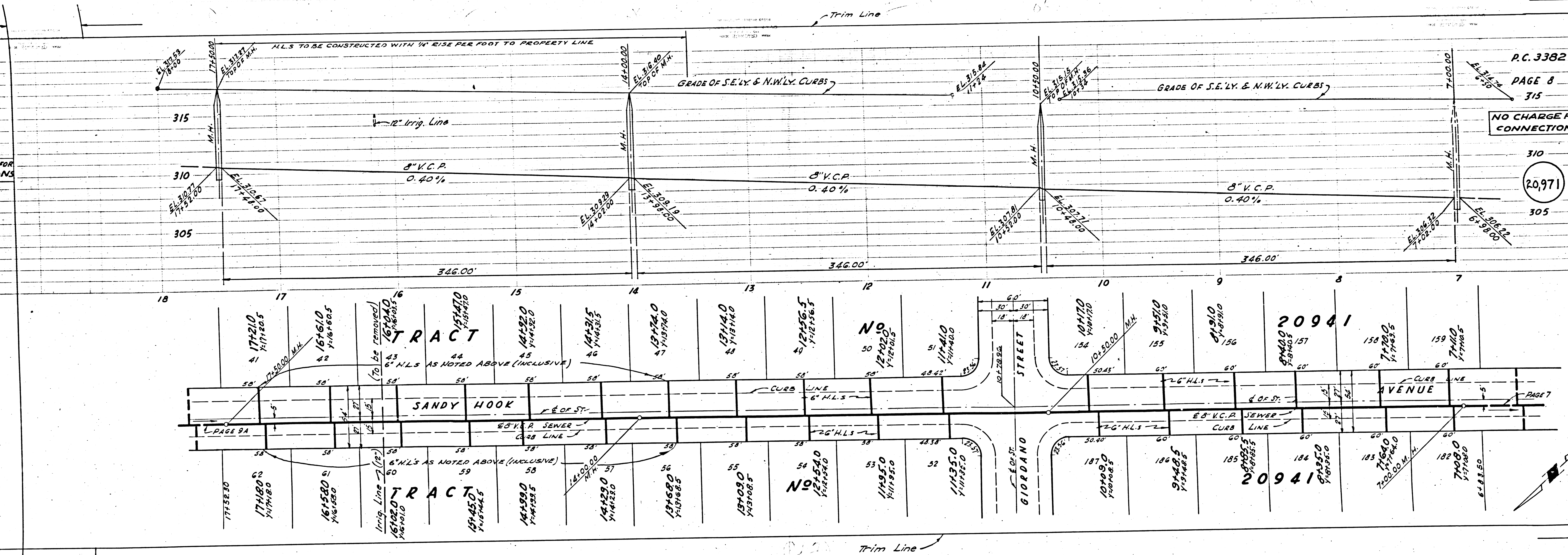
A

P.C. 3382  
PAGE 9

NO CHARGE FOR CONNECTIONS

20,972

310



P.C. 3382  
PAGE 8  
315  
NO CHARGE FOR CONNECTIONS

310  
20,971  
305

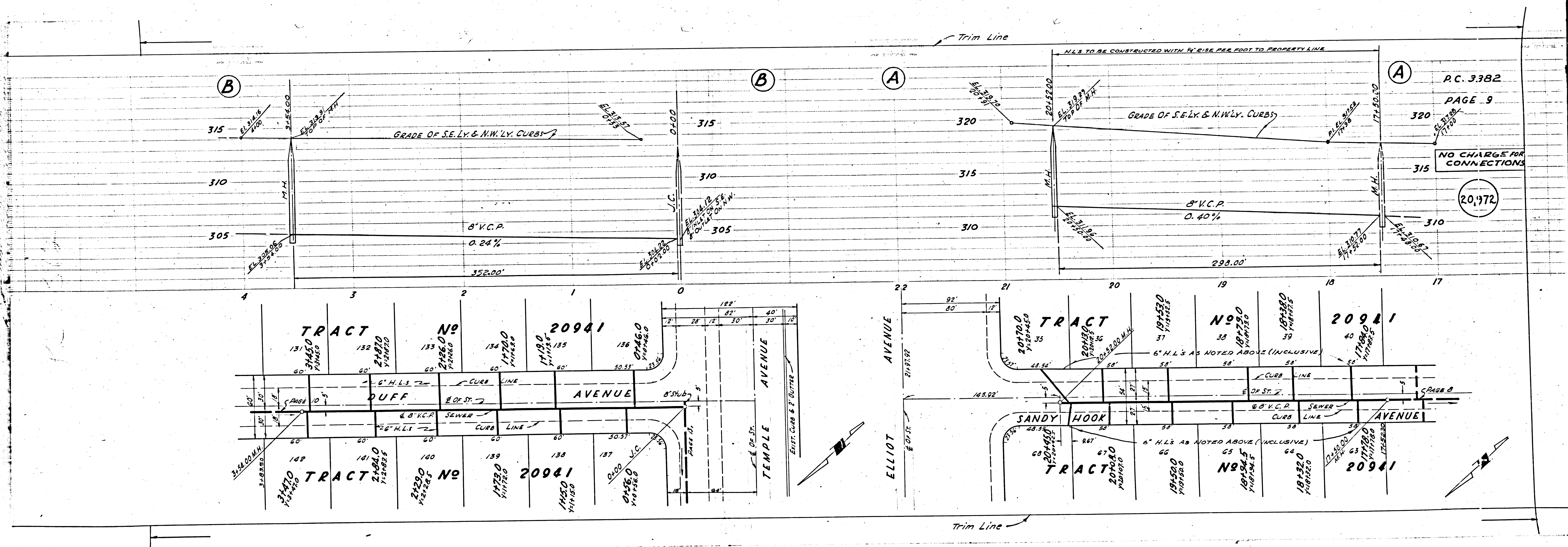
20941

20941

20941

PAGE 7

Trim Line

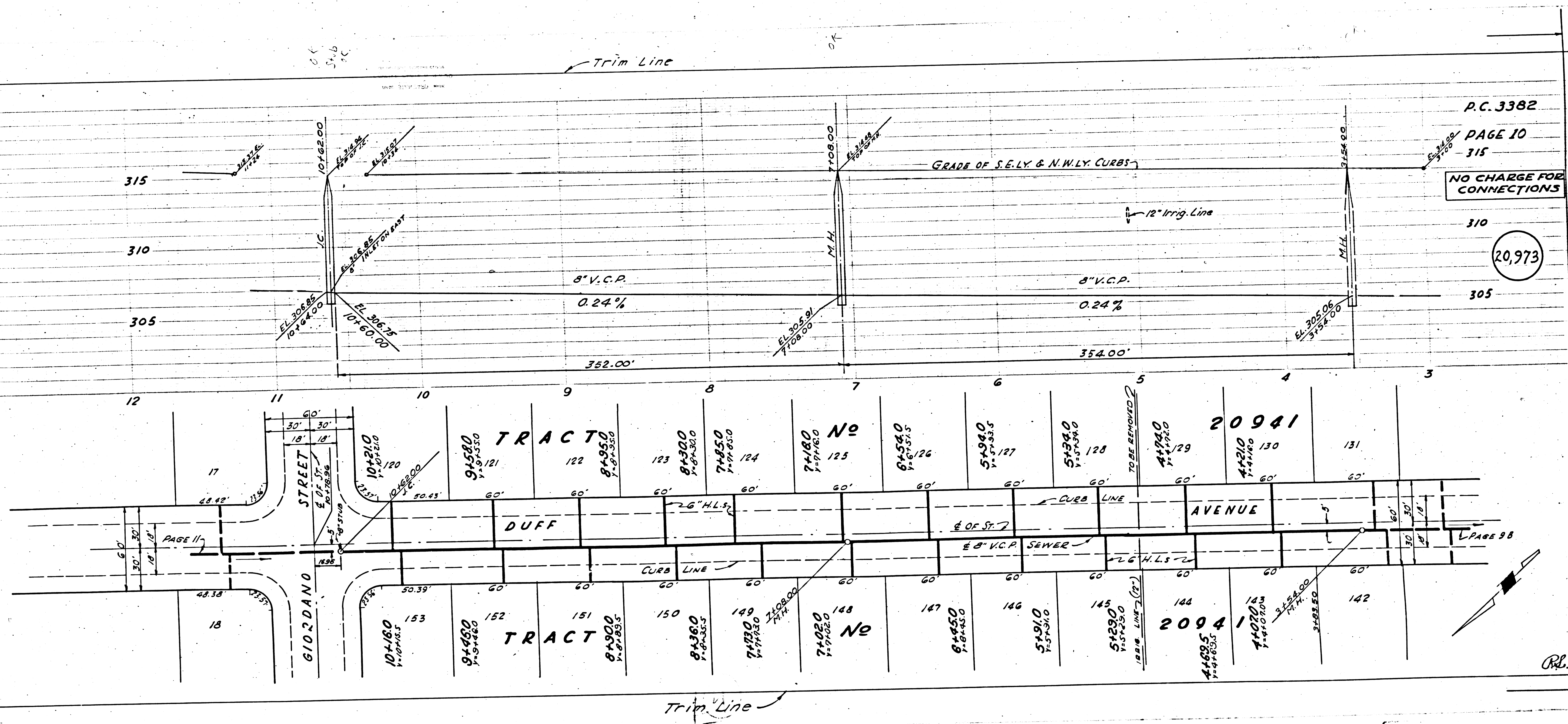


C. 3382

PAGE 11

NO CHARGE FOR CONNECTIONS

20,974



P.C. 3382  
PAGE 10  
315  
NO CHARGE FOR CONNECTIONS

20,973

TRACT No 20941

P.C. 3382

S.B.E.E.C.

3

P.C. 3382

PAGE 12

320

20,975

315

310

17

20941

AVENUE

20941

P.C. 3382

PAGE 11

NO CHARGE FOR CONNECTIONS

20,974

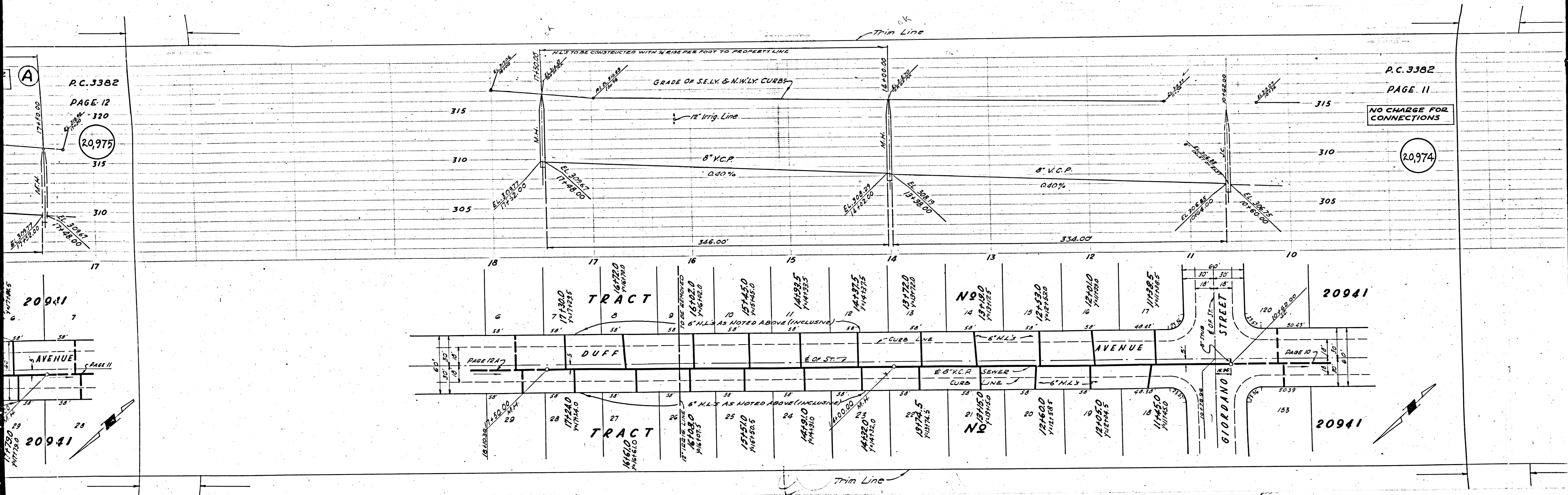
315

310

305

10

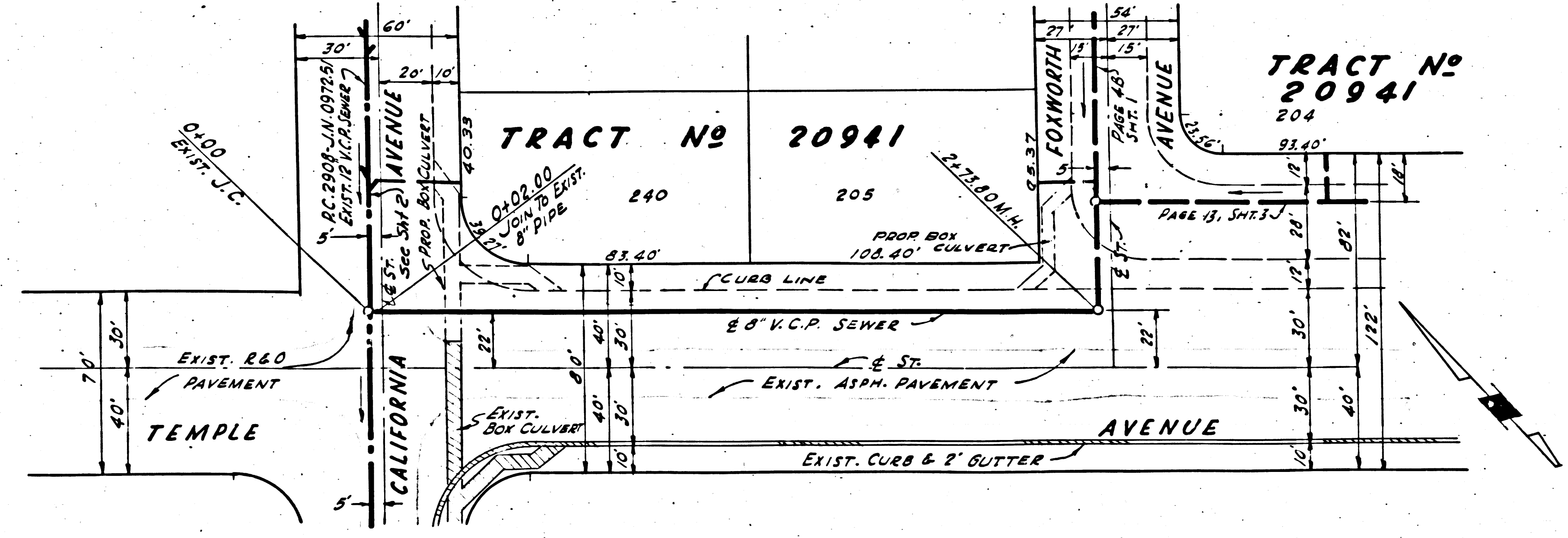
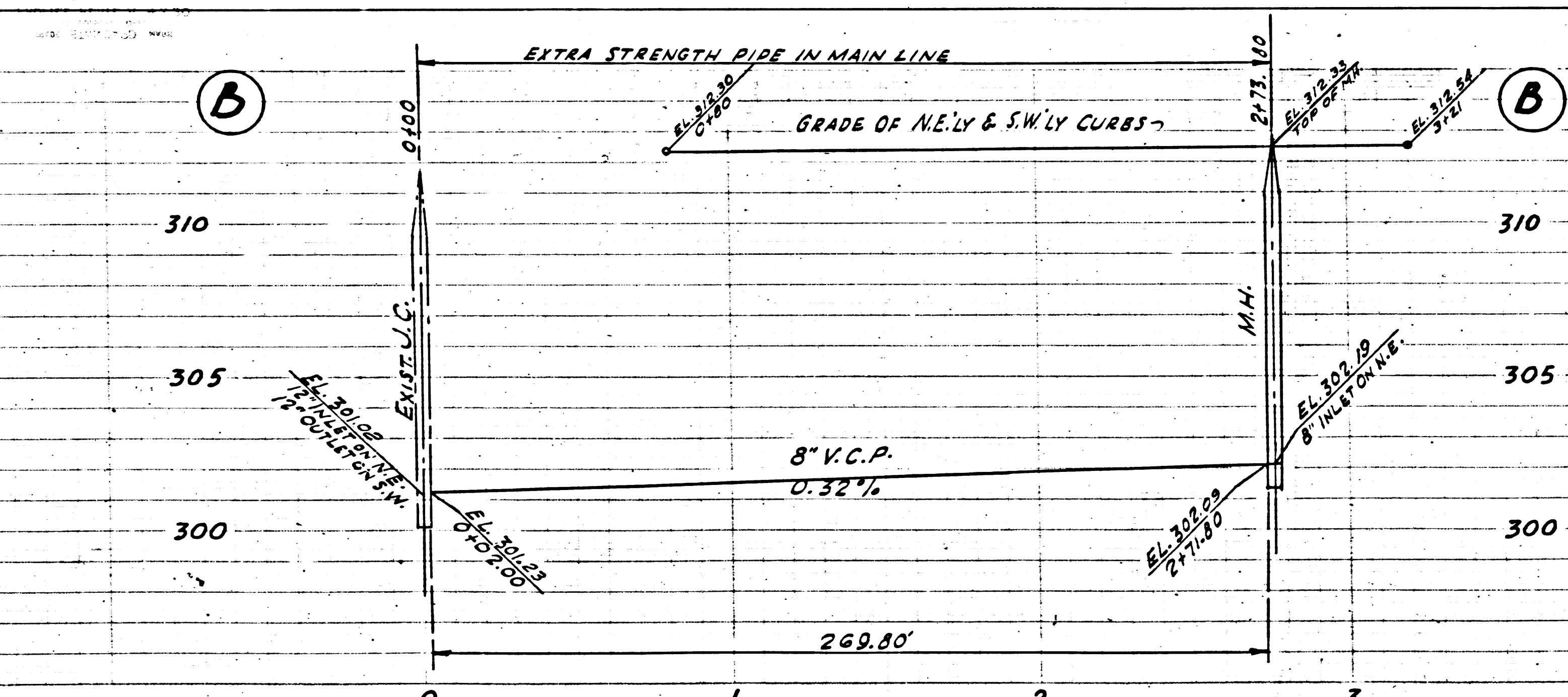
20941



P.C. 3382  
PAGE 13

NO CHARGE FOR CONNECTIONS

20,976



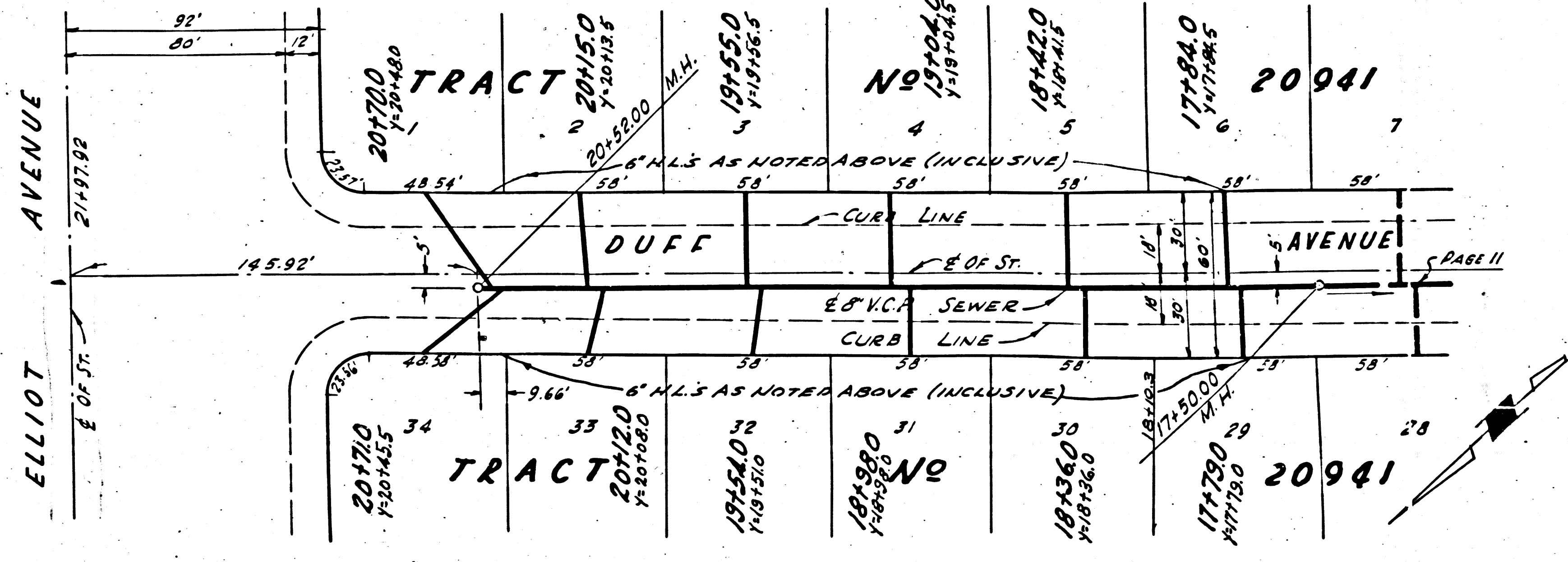
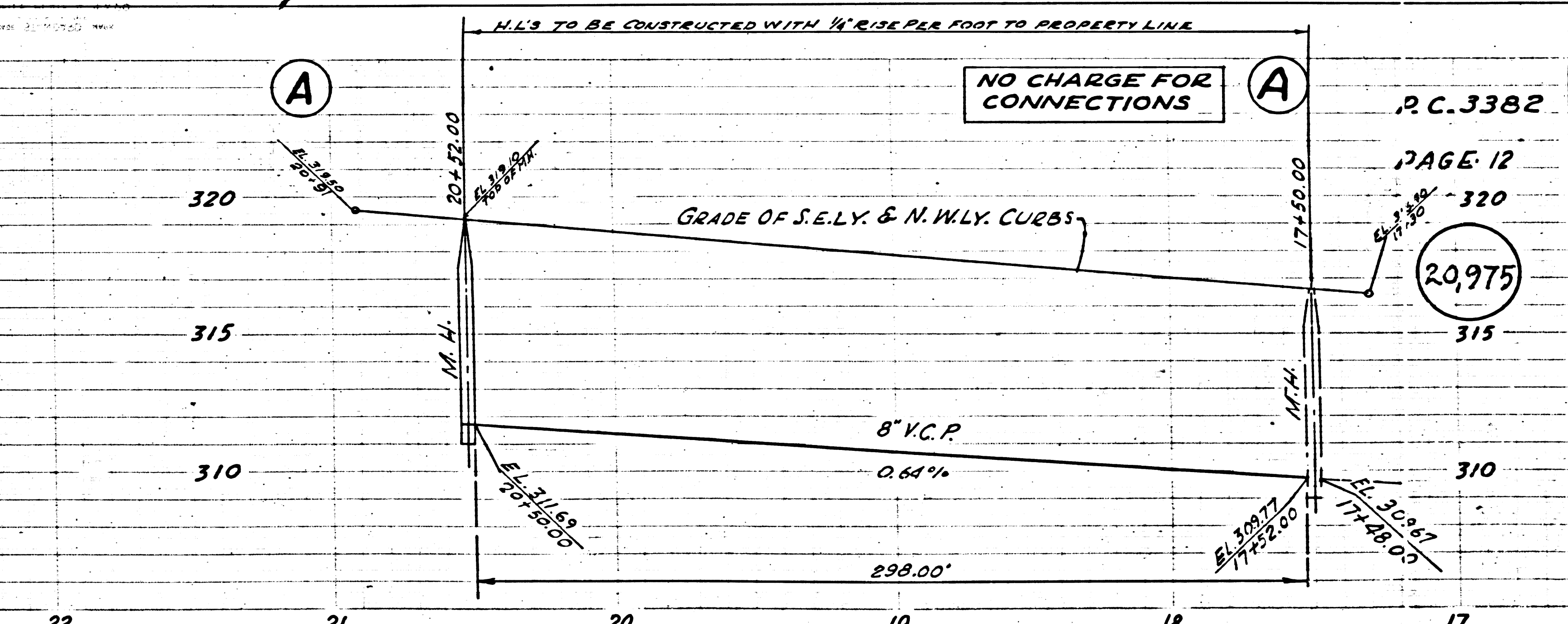
Trim Line  
M.I.'S TO BE CONSTRUCTED WITH 1/4" RISE PER FOOT TO PROPERTY LINE

NO CHARGE FOR CONNECTIONS

P.C. 3382  
PAGE 12

320 - 320

20,975





P.C. 3382

GE 2

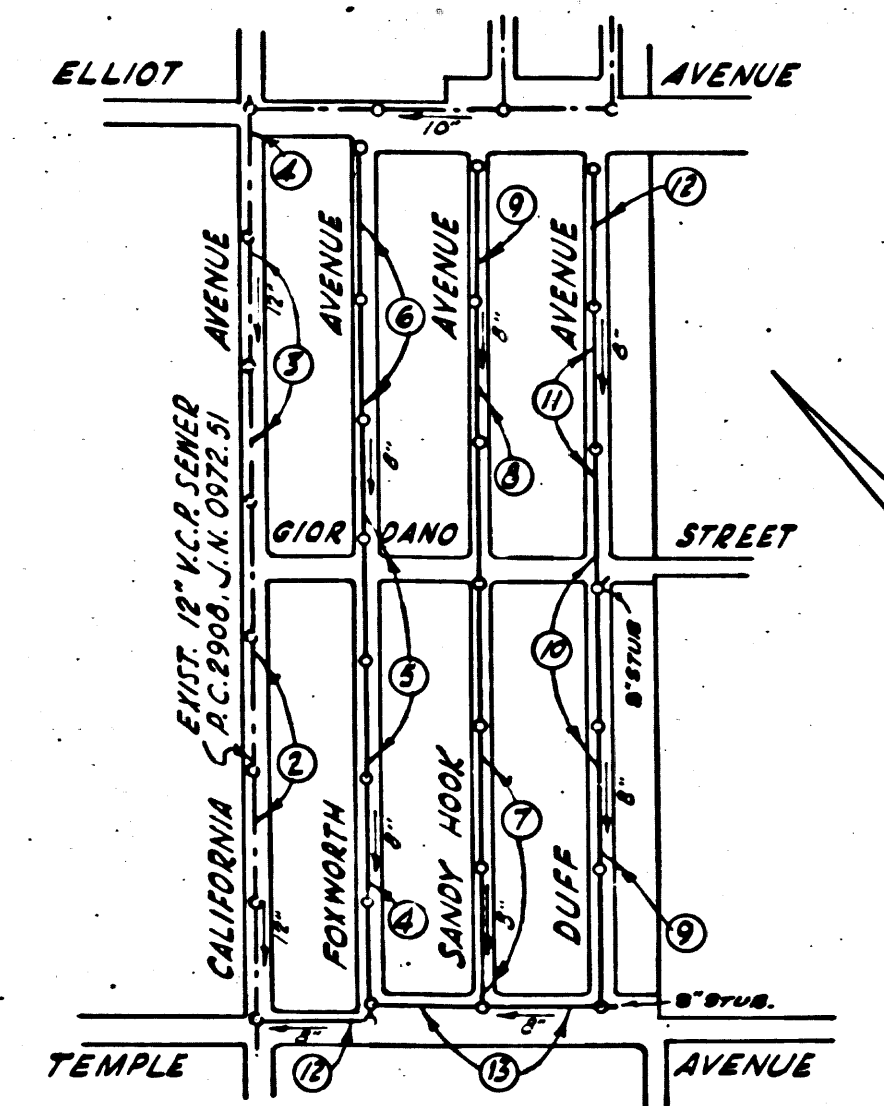
NO CHARGE FOR CONNECTIONS

20,965

B.M. S.G. 1111 ELEV. 321.361  
L.G.D.N. NORTH SIDE OF 18"  
STANDPIPE 130' SOUTH OF E ELLIOT  
AVENUE & 130' WEST OF E  
CALIFORNIA AVENUE.

**PUENTE** Bldg. Dist. No. **2**

- NOTE:  
Provide stakes on the property lines or property lines produced at right angles to the sewer line at the center line of each manhole.  
No representative of the County Engineer will survey or layout any portion of the work. The owner or his authorized representative shall furnish the County Engineer with grade sheets and stations for all house laterals and Y branches and shall provide stakes for them at their proper locations with stationing plainly marked. Any change in location shall be requested in writing by the owner or his representative.  
No revisions shall be made in these plans without the approval of the County Engineer.
1. Use standard manhole frames and covers, S-a-117.
  2. Use standard strength pipe except as noted.
  3. Use cement mortar for all vitrified clay pipe joints.
  4. Resurface all trench within paved area to meet L.A. County Road Dept. or Calif. State Highway Dept. requirements in accordance with permit.
  5. Encase four feet of sewer at points of interference with poles, S-a-119.
  6. House laterals to be constructed with inverts at property line ..... feet below cur. grade except as noted.
  7. All structures shall be brick sewer structures, S-a-104.
  8. For allowable leakage test, use Formula No. ...., Spec's., Sec. 51.



INDEX MAP  
SCALE: 1" = 800'  
TRACT NO. 20941  
P.C. 3382

checked 7-26-55 W. L. ...

PROFILE, ALIGNMENT AND GRADE OF  
**SANITARY SEWERS**  
TO BE CONSTRUCTED IN

P. C. 3382

PAGE 1

**TRACT NO 20941**

PRIVATE CONTRACT NO. 3382  
W. S. 38

Scale: VERT. 1" = 4'  
HORIZ. 1" = 40' FEBRUARY 1955

PREPARED IN THE OFFICES OF  
**F. D. M. WALSH & ASSOCIATES, INC.**  
By *F. D. M. Walsh* Reg. C. E. No. 6486  
FOR LEGEND SEE PLAN NO. S-a-64

3 SHEETS

20,964

NOTE:  
Grades to which this improvement is to be constructed are shown on plans and profiles. Grade points for top of curbs, center line of streets, or center line of alleys are shown by circles on profiles. At all points between designated points the grade shall be established so as to conform to a straight line drawn between said designated points.  
Elevations are in feet above U.S.G.S. datum or mean sea level.  
This drawing and the data hereon are hereby made a part of the specifications.  
Work shall be constructed according to specifications on file in the office of the County Engineer and shall be prosecuted only in the presence of the County Engineer.  
Before work can be started, the contractor must obtain a permit to excavate in County streets from the L.A. County Road Dept., 108 W. 2nd St., and make a deposit with the County Engineer, room 324, 253 S. Broadway, sufficient to cover the cost of construction inspection and record plans.  
Approval of this plan by the County of Los Angeles does not constitute a representation as to the accuracy of the location or the existence or non-existence of any underground utility, pipe, or structure within the limits of this project. This note applies to all sheets.  
If work is to be done in a State Highway, a permit must be obtained from the State of California, Division of Highways, 120 South Spring Street.

COUNTY OF LOS ANGELES, CALIFORNIA

Approved, William J. Fox, County Engineer  
Approved, A. M. Rawn  
CHIEF ENGR. CO. SAN. DIST. NO. 15  
By *A. P. Collins*  
Checked by *A. P. Collins* 3-31-55  
Office of County Engineer, Reg. C. E. No. 7860

SHEET NO.	PAGES
1	1-5
2	6-9
3	10-13

NO CHARGE FOR CONNECTIONS  
*W. L. ... 3-31-55*

CURB GRADES AND SEWER GRADE REVISIONS  
ON PAGES: 2, 4, 5, 6, 8, 9, 11 & 12.

APPROVED *A. P. Collins* 4-21-55  
OFFICE OF COUNTY ENGINEER, REG. C. E. NO. 7860

PAGE 1 OF 3  
P.C. 3382 TRACT NO 20941

SHEET NO. 20,965

1



P.C. 3382

PAGE 5

NO CHARGE FOR CONNECTIONS

310

20,968

305

B

315

310

305

EXTRA STRENGTH PIPE IN MAIN LINE AND HOUSE LATERALS

GRADE OF S.E. LY. & N.W. LY. CURBS

8" V.C.P. 0.56% 254.00'

B

315

310

305

A

320

315

310

EXTRA STRENGTH PIPE IN HOUSE LATERALS

SURFACE OVER SEWER

GRADE AT S.E. LY. CURB

12" CONC. IRRIG. LINE

20" RIVETED STEEL WATER LINE (25 YEARS OLD)

12" CONC. IRRIG. LINE

20" RIVETED STEEL WATER LINE (25 YEARS OLD)

12" CONC. IRRIG. LINE

20" RIVETED STEEL WATER LINE (25 YEARS OLD)

12" CONC. IRRIG. LINE

20" RIVETED STEEL WATER LINE (25 YEARS OLD)

12" CONC. IRRIG. LINE

20" RIVETED STEEL WATER LINE (25 YEARS OLD)

12" CONC. IRRIG. LINE

20" RIVETED STEEL WATER LINE (25 YEARS OLD)

12" CONC. IRRIG. LINE

20" RIVETED STEEL WATER LINE (25 YEARS OLD)

12" CONC. IRRIG. LINE

20" RIVETED STEEL WATER LINE (25 YEARS OLD)

12" CONC. IRRIG. LINE

20" RIVETED STEEL WATER LINE (25 YEARS OLD)

12" CONC. IRRIG. LINE

20" RIVETED STEEL WATER LINE (25 YEARS OLD)

12" CONC. IRRIG. LINE

20" RIVETED STEEL WATER LINE (25 YEARS OLD)

12" CONC. IRRIG. LINE

20" RIVETED STEEL WATER LINE (25 YEARS OLD)

12" CONC. IRRIG. LINE

20" RIVETED STEEL WATER LINE (25 YEARS OLD)

12" CONC. IRRIG. LINE

20" RIVETED STEEL WATER LINE (25 YEARS OLD)

12" CONC. IRRIG. LINE

20" RIVETED STEEL WATER LINE (25 YEARS OLD)

12" CONC. IRRIG. LINE

20" RIVETED STEEL WATER LINE (25 YEARS OLD)

12" CONC. IRRIG. LINE

20" RIVETED STEEL WATER LINE (25 YEARS OLD)

12" CONC. IRRIG. LINE

20" RIVETED STEEL WATER LINE (25 YEARS OLD)

12" CONC. IRRIG. LINE

20" RIVETED STEEL WATER LINE (25 YEARS OLD)

12" CONC. IRRIG. LINE

20" RIVETED STEEL WATER LINE (25 YEARS OLD)

12" CONC. IRRIG. LINE

20" RIVETED STEEL WATER LINE (25 YEARS OLD)

12" CONC. IRRIG. LINE

20" RIVETED STEEL WATER LINE (25 YEARS OLD)

A

320

315

310

NO CHARGE FOR CONNECTIONS

20,967

310

TRACT No 20941

200 201 202 203 204

60' 60' 60' 60' 60'

FOXWORTH AVENUE

26" H.L.S. 26" H.L.S.

6" V.C.P. 6" V.C.P.

26" H.L.S. 26" H.L.S.

6" V.C.P. 6" V.C.P.

26" H.L.S. 26" H.L.S.

6" V.C.P. 6" V.C.P.

26" H.L.S. 26" H.L.S.

6" V.C.P. 6" V.C.P.

26" H.L.S. 26" H.L.S.

6" V.C.P. 6" V.C.P.

26" H.L.S. 26" H.L.S.

6" V.C.P. 6" V.C.P.

26" H.L.S. 26" H.L.S.

6" V.C.P. 6" V.C.P.

26" H.L.S. 26" H.L.S.

6" V.C.P. 6" V.C.P.

26" H.L.S. 26" H.L.S.

6" V.C.P. 6" V.C.P.

26" H.L.S. 26" H.L.S.

6" V.C.P. 6" V.C.P.

26" H.L.S. 26" H.L.S.

6" V.C.P. 6" V.C.P.

TRACT No 20941

103 104 105

60' 60' 60'

AVENUE

26" H.L.S. 26" H.L.S.

6" V.C.P. 6" V.C.P.

26" H.L.S. 26" H.L.S.

6" V.C.P. 6" V.C.P.

26" H.L.S. 26" H.L.S.

6" V.C.P. 6" V.C.P.

26" H.L.S. 26" H.L.S.

6" V.C.P. 6" V.C.P.

26" H.L.S. 26" H.L.S.

6" V.C.P. 6" V.C.P.

26" H.L.S. 26" H.L.S.

6" V.C.P. 6" V.C.P.

26" H.L.S. 26" H.L.S.

6" V.C.P. 6" V.C.P.

26" H.L.S. 26" H.L.S.

6" V.C.P. 6" V.C.P.

26" H.L.S. 26" H.L.S.

6" V.C.P. 6" V.C.P.

26" H.L.S. 26" H.L.S.

6" V.C.P. 6" V.C.P.

26" H.L.S. 26" H.L.S.

6" V.C.P. 6" V.C.P.

TRACT No 606

LOT 394

M.B. 15, 142-143

SEE P.C. 2908 FOR CONNECTIONS & CHARGES

EXIST. ASPH. PUNT.

EXIST. 12" V.C.P. SEWER

EXIST. 12" V.C.P. SEWER

EXIST. 12" V.C.P. SEWER

EXIST. 12" V.C.P. SEWER

EXIST. 12" V.C.P. SEWER

EXIST. 12" V.C.P. SEWER

EXIST. 12" V.C.P. SEWER

EXIST. 12" V.C.P. SEWER

EXIST. 12" V.C.P. SEWER

EXIST. 12" V.C.P. SEWER

EXIST. 12" V.C.P. SEWER

EXIST. 12" V.C.P. SEWER

EXIST. 12" V.C.P. SEWER

EXIST. 12" V.C.P. SEWER

EXIST. 12" V.C.P. SEWER

EXIST. 12" V.C.P. SEWER

EXIST. 12" V.C.P. SEWER

EXIST. 12" V.C.P. SEWER

EXIST. 12" V.C.P. SEWER

EXIST. 12" V.C.P. SEWER

EXIST. 12" V.C.P. SEWER

EXIST. 12" V.C.P. SEWER

P.C. 3382

AGE 8

315

NO CHARGE FOR CONNECTIONS

310

(20,971)

305

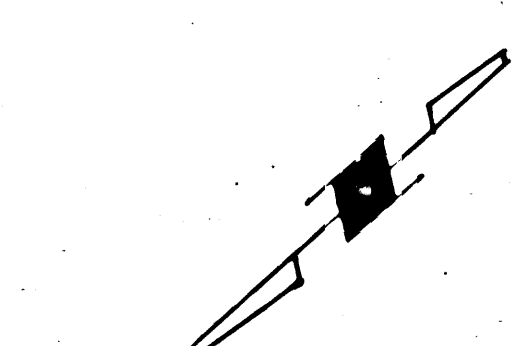
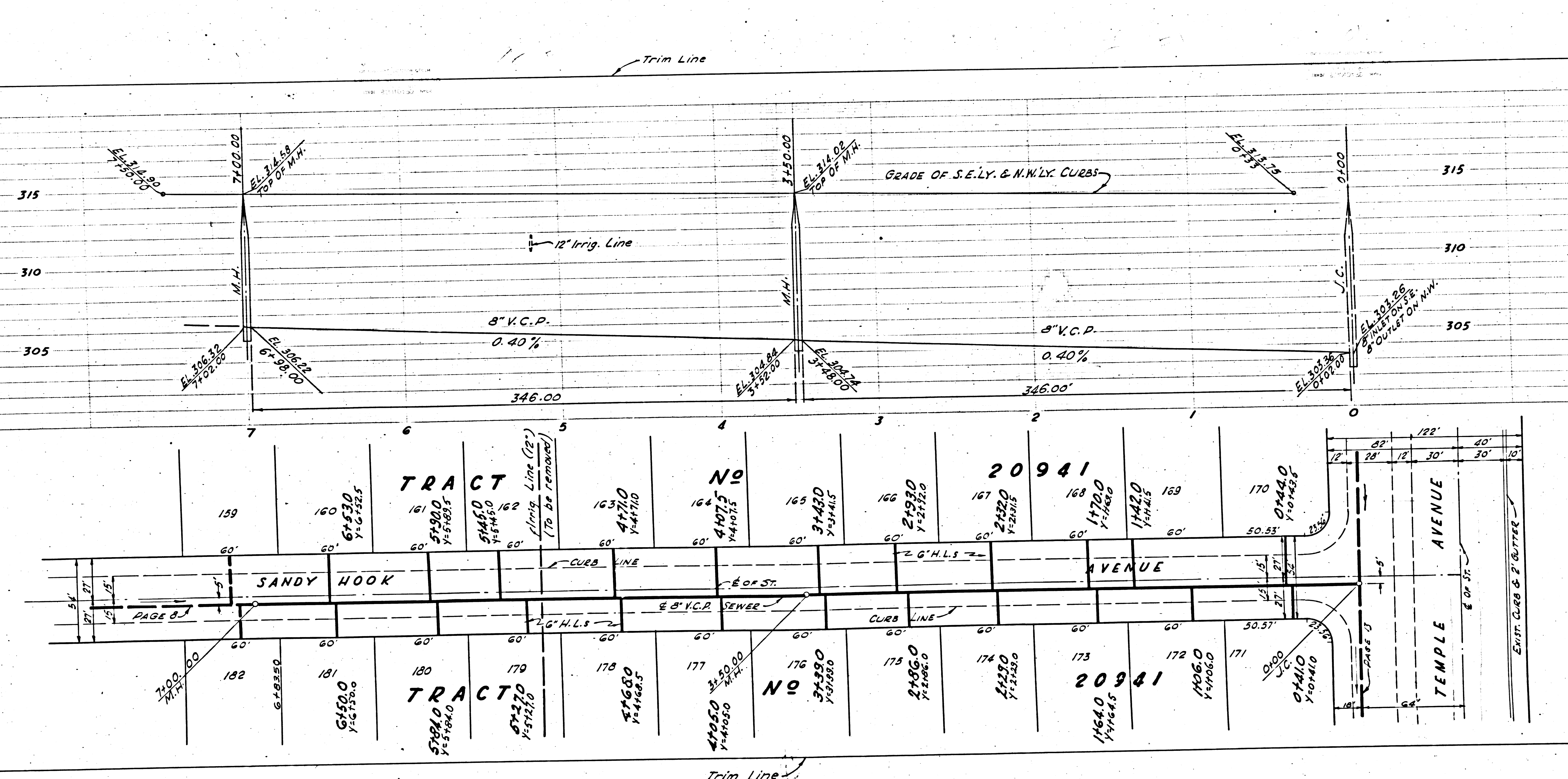
PAGE 7

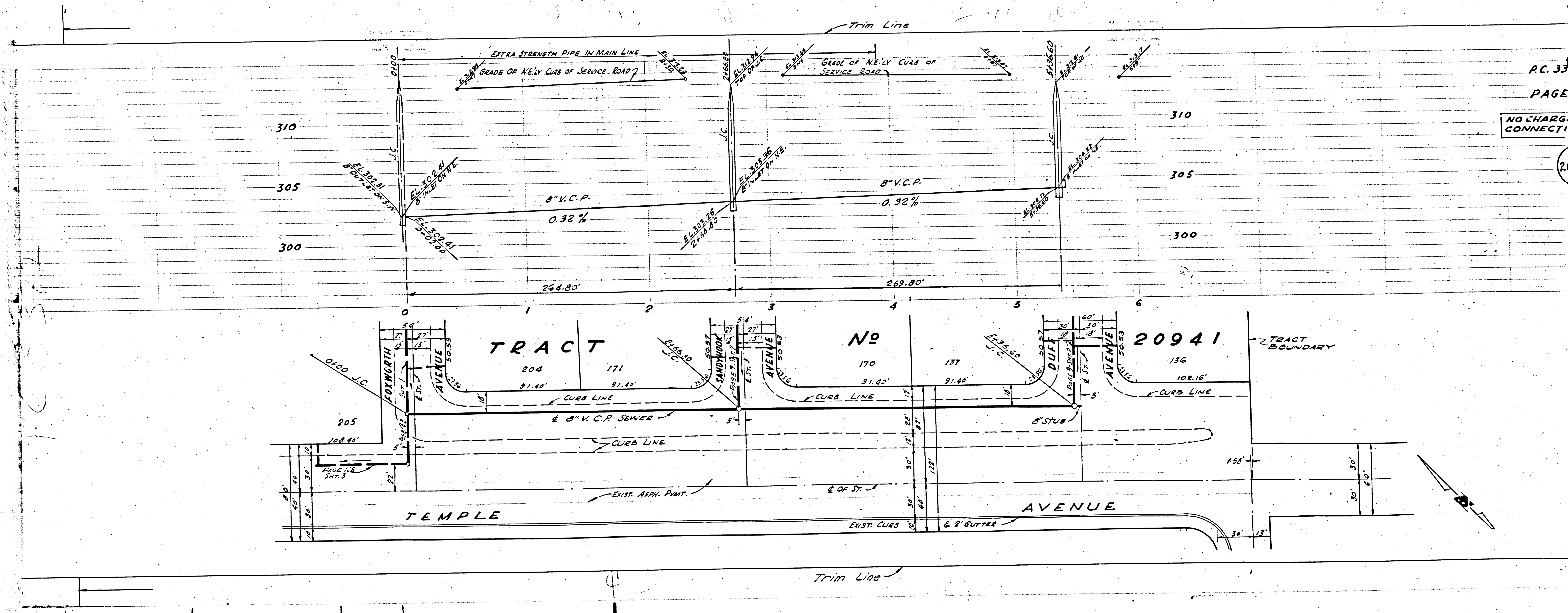
P.C. 3382

PAGE 7

NO CHARGE FOR CONNECTIONS

(20,970)





P.C. 33  
PAGE  
NO CHARGE  
CONNECT

