

Trim Line

PUENTE Bldg. Dist. No. 2

- NOTE:
 Provide stakes on the property lines or property lines produced at right angles to the sewer line at the center line of each manhole.
 No representative of the County Engineer will survey or layout any portion of the work. The owner or his authorized representative shall furnish the County Engineer with grade sheets and stations for all house laterals and Y branches and shall provide stakes for them at their proper locations with stationing plainly marked. Any change in location shall be requested in writing by the owner or his representative.
 No revisions shall be made in these plans without the approval of the County Engineer.
1. Use standard manhole frames and covers, S-a-117.
 2. Use standard strength pipe except as noted.
 3. Use cement mortar for all vitrified clay pipe joints.
 4. Resurface all trench within paved area to meet L.A. County Road Dept. or Calif. State Highway Dept. requirements in accordance with permit.
 5. Encase four feet of sewer at points of interference with poles, S-a-119.
 6. House laterals to be constructed with inverts at property line.....6.....feet below curb grade except as noted.
 7. All structures shall be brick sewer structures, S-a-104.
 8. For allowable leakage test, use Formula No. 1....., Spec's., Sec. 51.

PROFILE, ALIGNMENT AND GRADE OF
SANITARY SEWERS
 TO BE CONSTRUCTED IN
TRACT NO 21408

P. C. 3384
 PAGE 1

PRIVATE CONTRACT NO. 3384
 W. S. 38

21,082

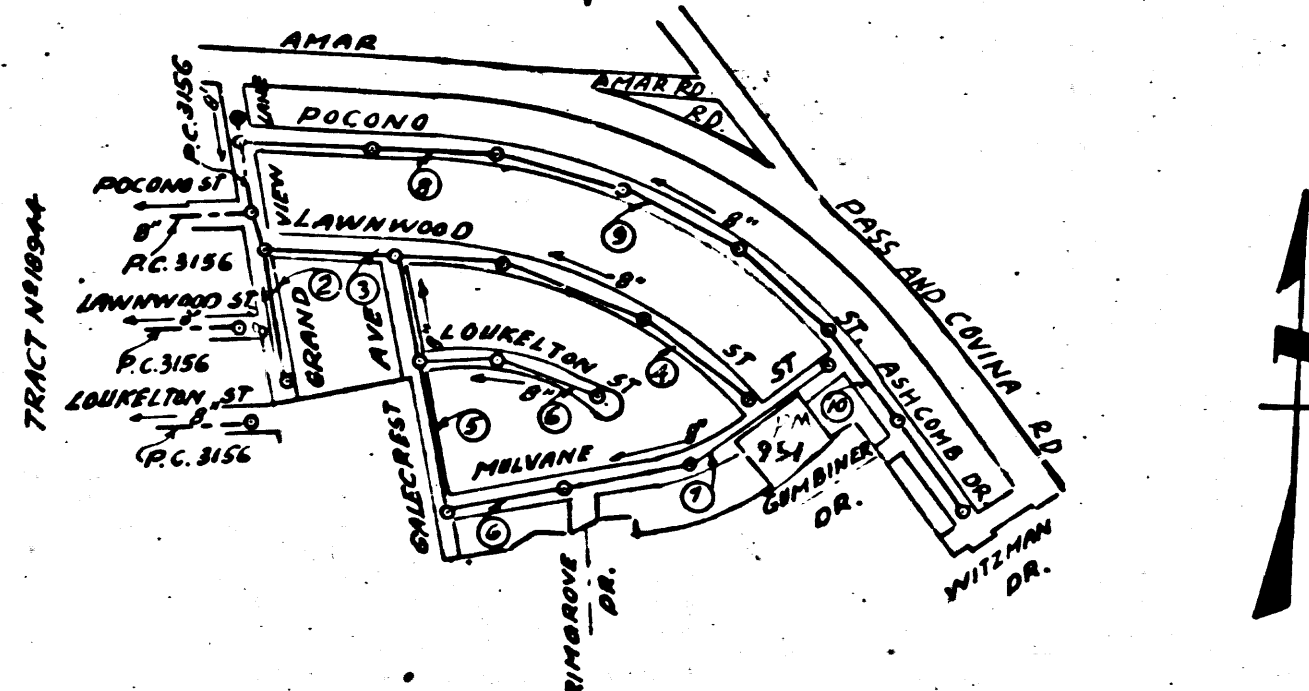
FEBRUARY 1955
 2 SHEETS

Scale: VERT. 1"=4'
 HORIZ. 1"=40'
 PREPARED IN THE OFFICES OF
KARL TUTTLE ENGINEERING CO.
Jay M. Bassler Reg. C.E. No. 2895
 FOR LEGEND SEE PLAN NO. S-a-64

NOTE:
 Grades to which this improvement is to be constructed are shown on plans and profiles. Grade points for top of curbs, center line of streets, or center line of alleys are shown by circles on profiles. At all points between designated points the grade shall be established so as to conform to a straight line drawn between said designated points.
 Elevations are in feet above U.S.G.S. datum or mean sea level.
 This drawing and the data hereon are hereby made a part of the specifications.
 Work shall be constructed according to specifications on file in the office of the County Engineer and shall be prosecuted only in the presence of the County Engineer.
 Before work can be started, the contractor must obtain a permit to excavate in County streets from the L.A. County Road Dept., 108 W. 2nd St., and make a deposit with the County Engineer, Rm. 324, 253 So. Broadway sufficient to cover the cost of construction inspection and record plans.
 Approval of this plan by the County of Los Angeles does not constitute a representation as to the accuracy of the location of or the existence or non-existence of any underground utility, pipe, or structure within the limits of this project. This note applies to all sheets.
 If work is to be done in a State Highway, a permit must be obtained from the State of California, Division of Highways, 120 South Spring Street.

COUNTY OF LOS ANGELES, CALIFORNIA
 Approved, William J. Fox, County Engineer
A. P. Collins CHIEF ENGR. CO. SAN. DIST. NO. 12
 Sanitation Engineer
R. K. ... Office Engineer
 Checked by *R. K. ...* 4-12-55
 Office of County Engineer, Reg. C. E. No. 7860

B.M.
 S.G. 101A Elevation 327.027
 Set 1/8" nail South curb of driveway to house
 N 87° 6' Glendora Ave 7' 25" South of intersection
 E 1st Ave & Glendora Ave 130' East of beginning of curb.



INDEX MAP
 SCALE 1"=600'
 TRACT NO 21408
 PC 3384

SHEET NO	PAGES
1	1-5
2	6-10

COLLECT CHARGES AS INDICATED
L. Costa 4-14-55

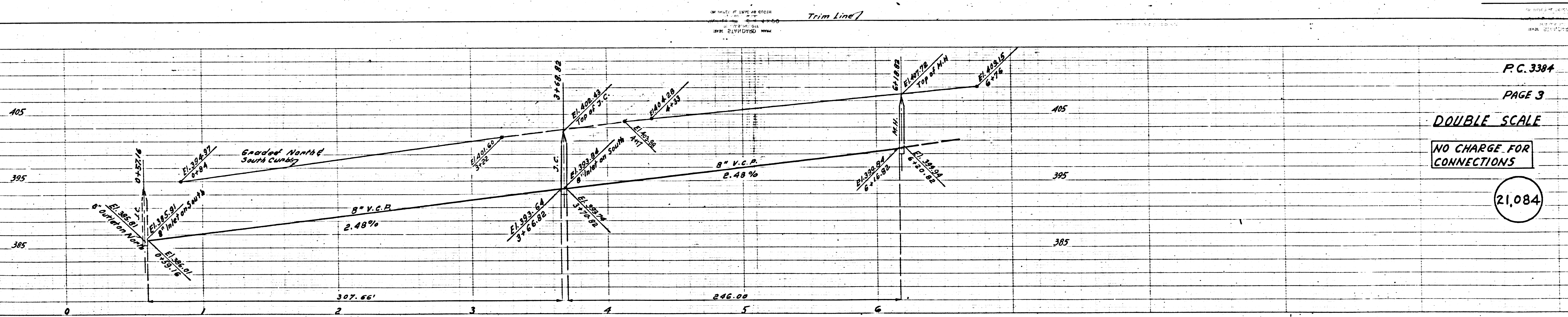
Checked 8-12-55 *W. ...*

Trim Line

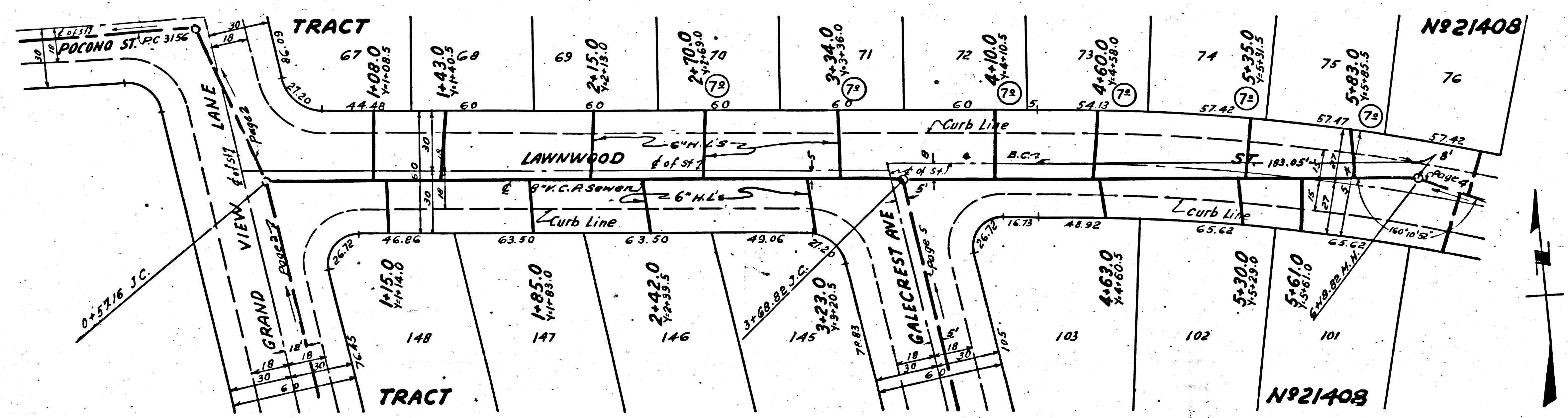
TRACT NO 21408

PC 3384

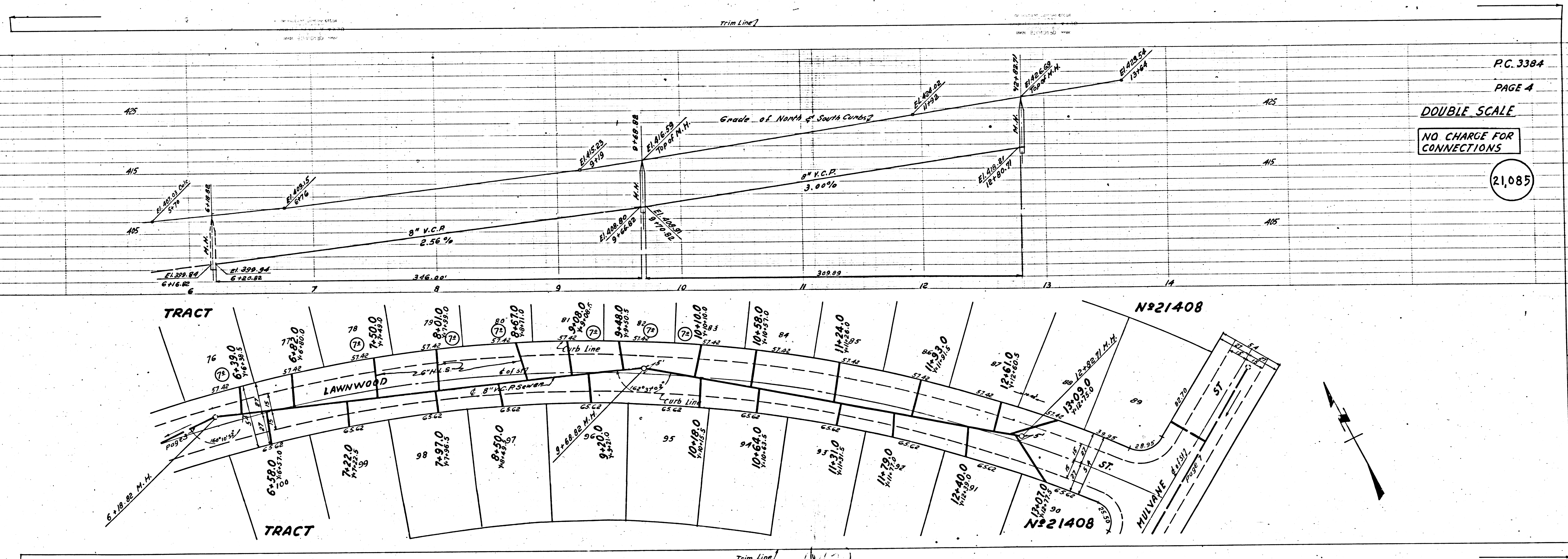
PS.



P.C. 3384
 PAGE 3
 DOUBLE SCALE
 NO CHARGE FOR CONNECTIONS
 21,084



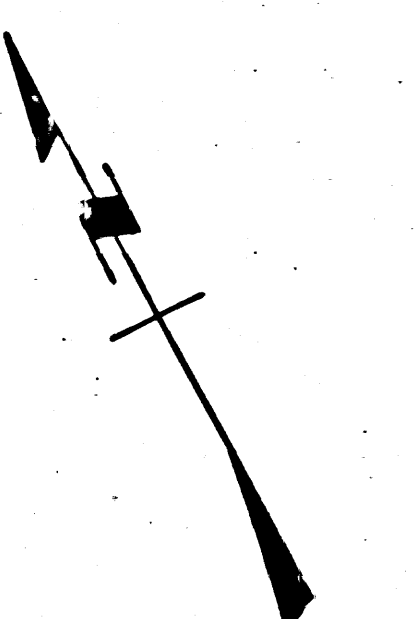
Page Trim Line



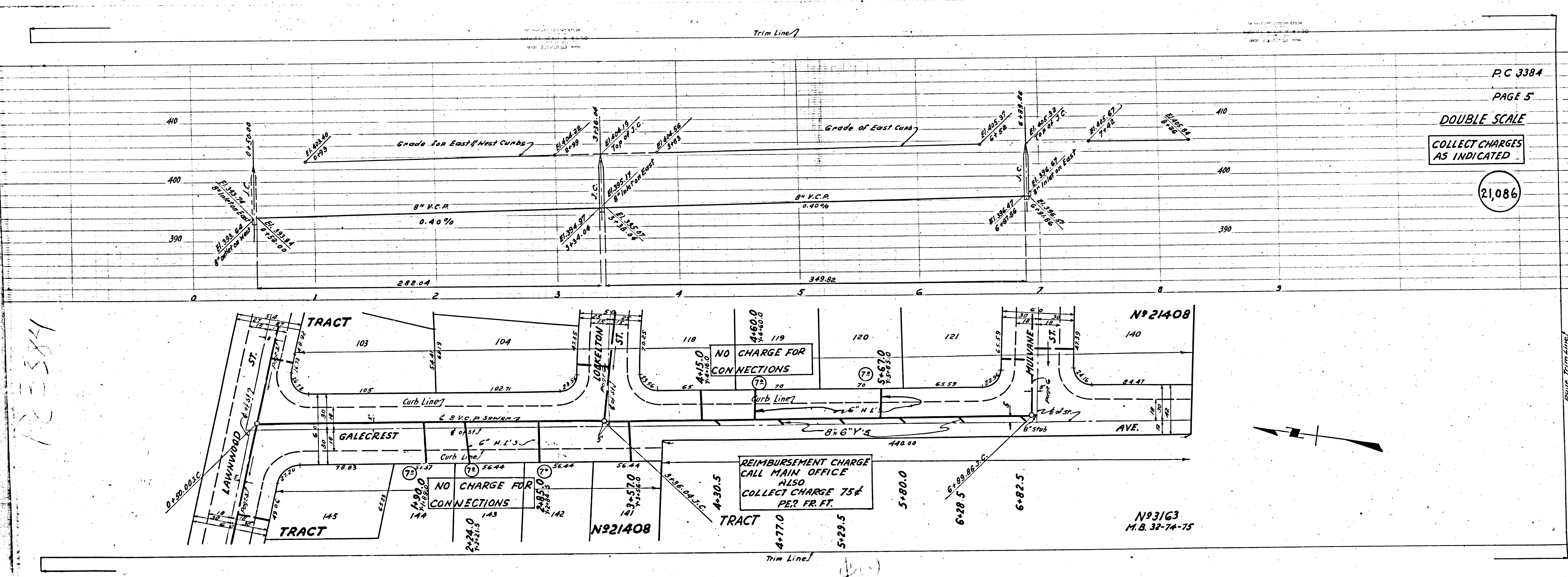
PC. 3384
PAGE 4

DOUBLE SCALE
NO CHARGE FOR CONNECTIONS

21,085



Trim Line



P.C. 3384

PAGE 5

DOUBLE SCALE

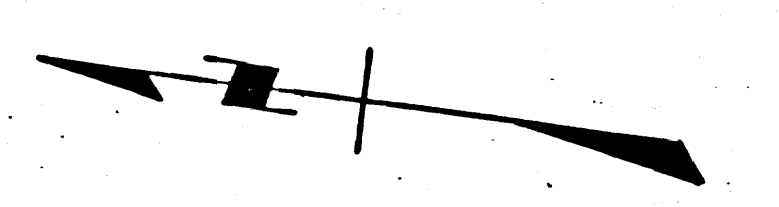
COLLECT CHARGES AS INDICATED

21086

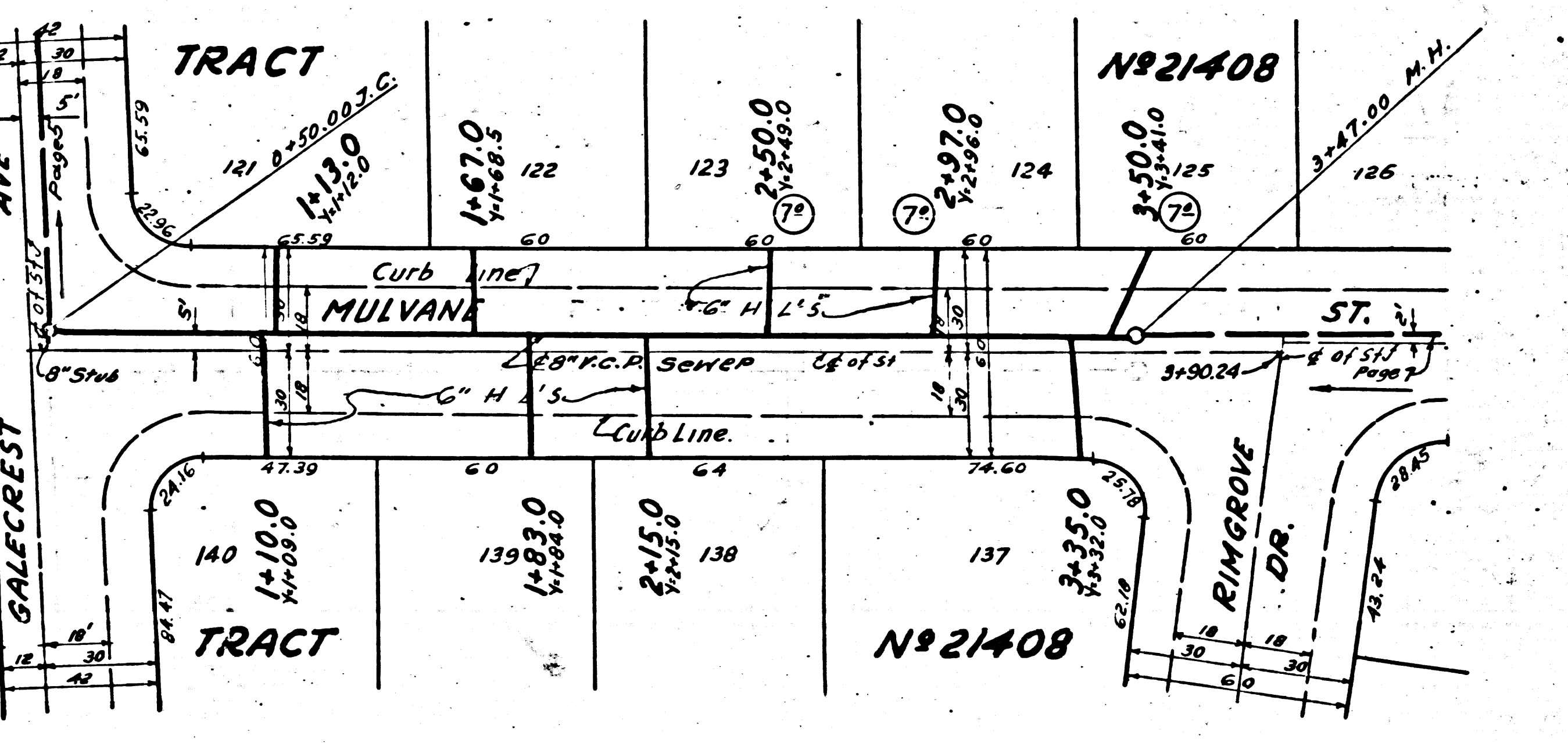
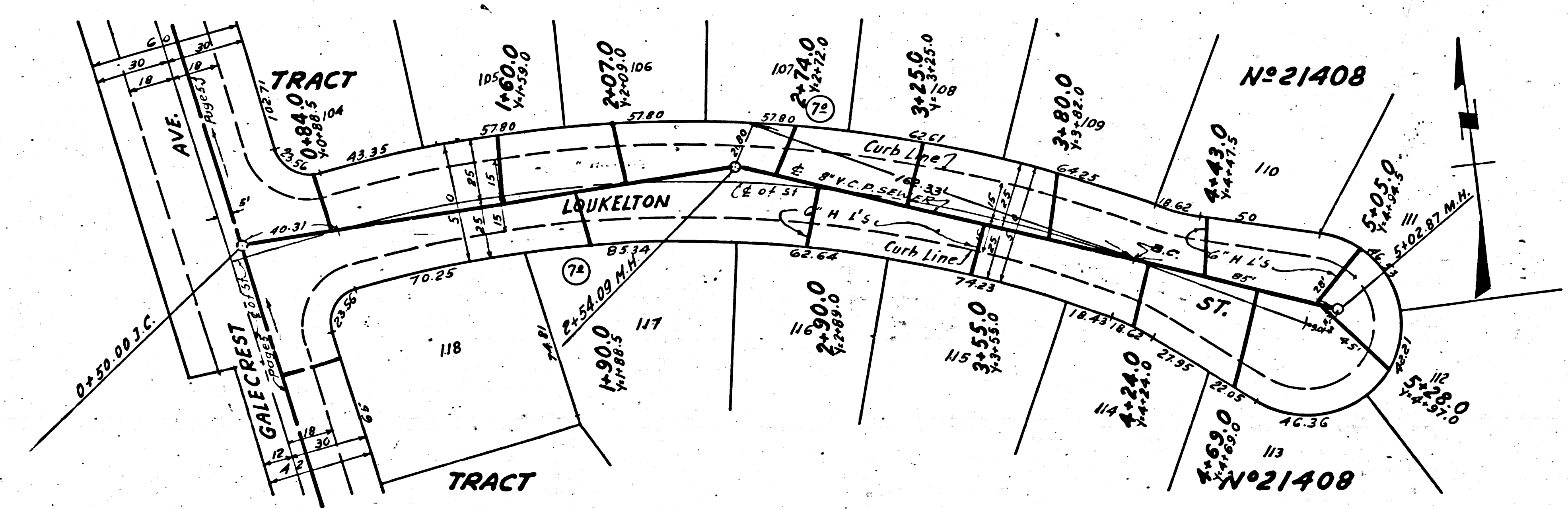
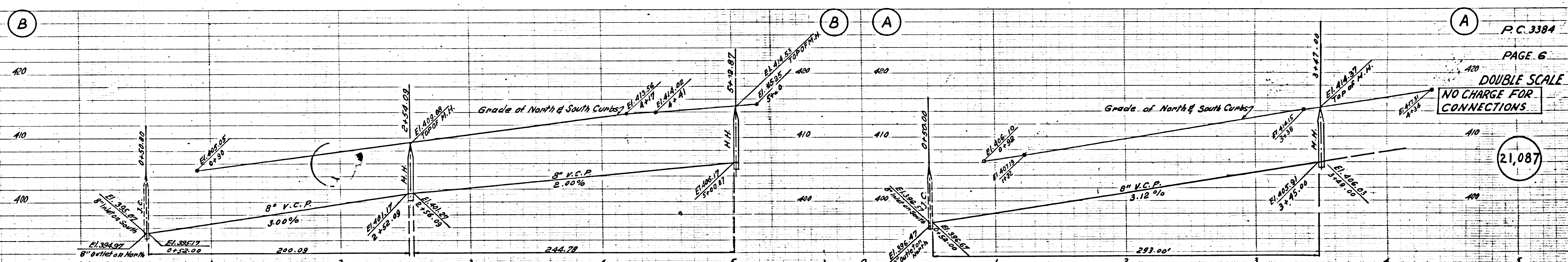
12-384

REIMBURSEMENT CHARGE
CALL MAIN OFFICE
ALSO
COLLECT CHARGE 75¢
PER FR. FT.

Nº 21408
M.B. 32-74-75

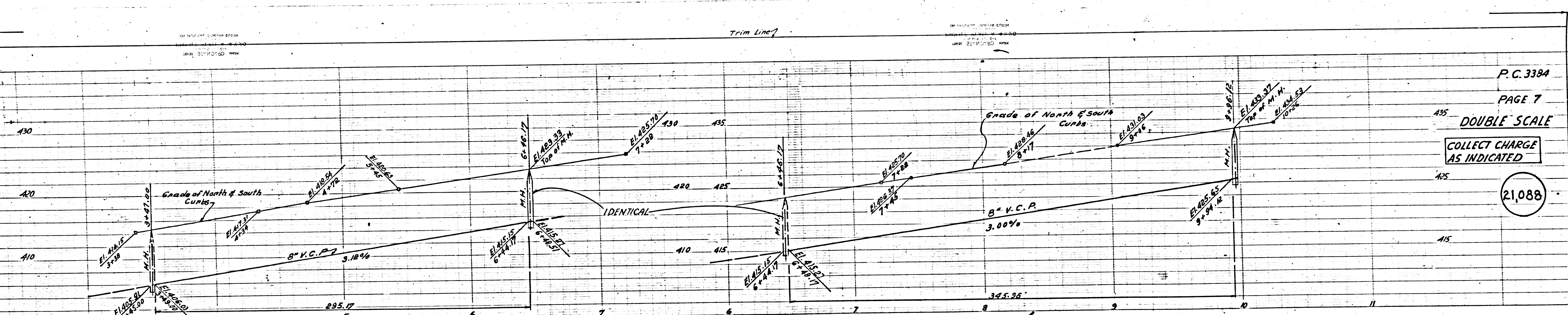


Range Trim Line

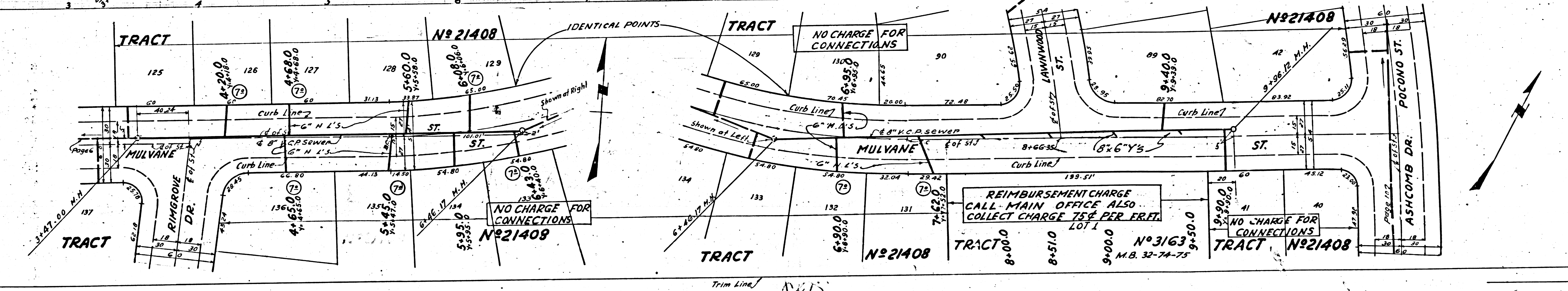


P.C. 3394
PAGE 6
DOUBLE SCALE
NO CHARGE FOR CONNECTIONS
21,087

R.B.
P.C. 3394

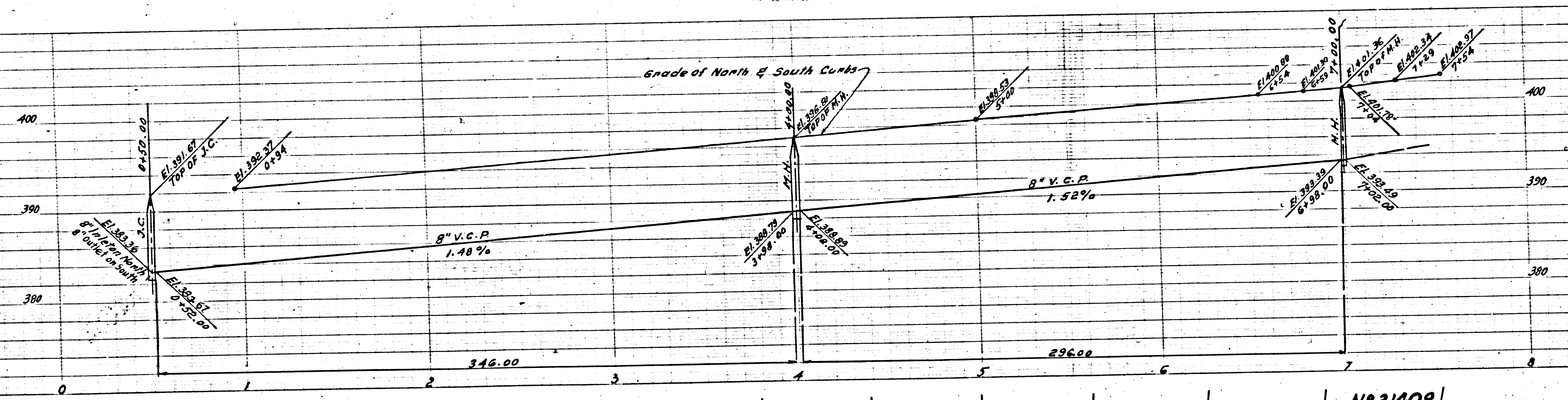


P.C. 3384
 PAGE 7
 DOUBLE SCALE
 COLLECT CHARGE AS INDICATED
 21,088

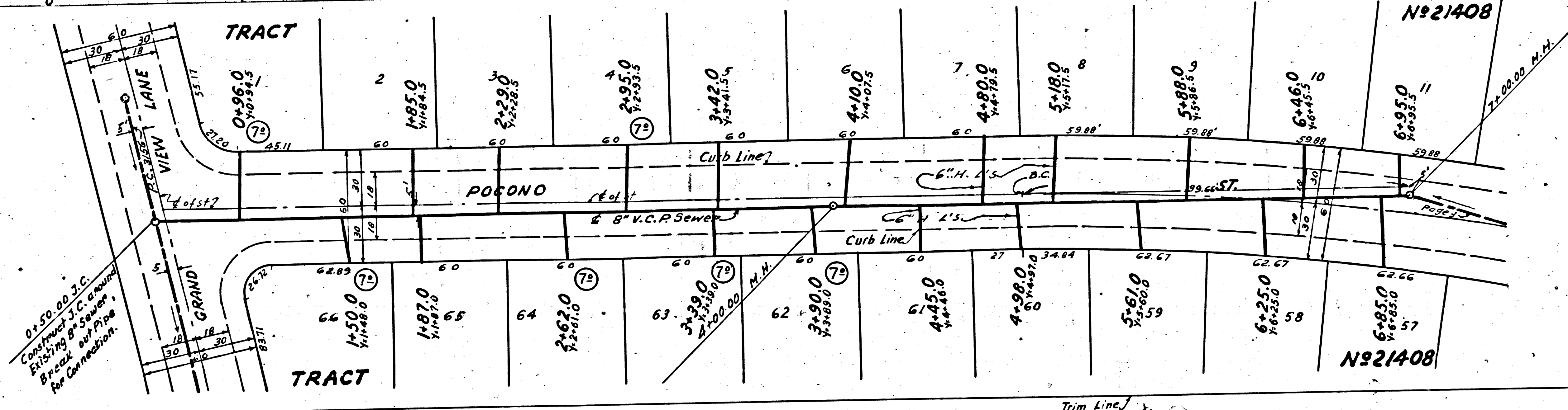


Page Trim Line

Trim Line 7



P.C. 3384
 PAGE 8
 DOUBLE SCALE
 NO CHARGE FOR CONNECTIONS
 21,089

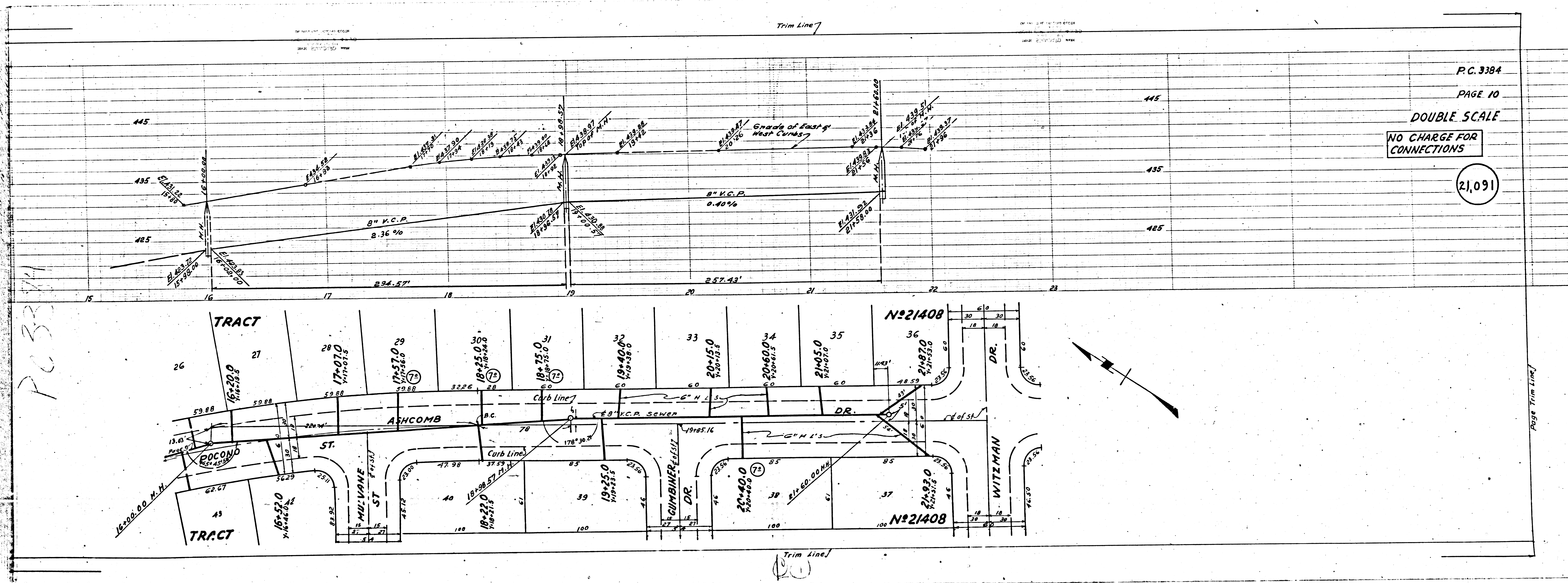


Page Trim Line 7

Page Trim Line 7

Trim Line 7

(12)



P.C. 3384

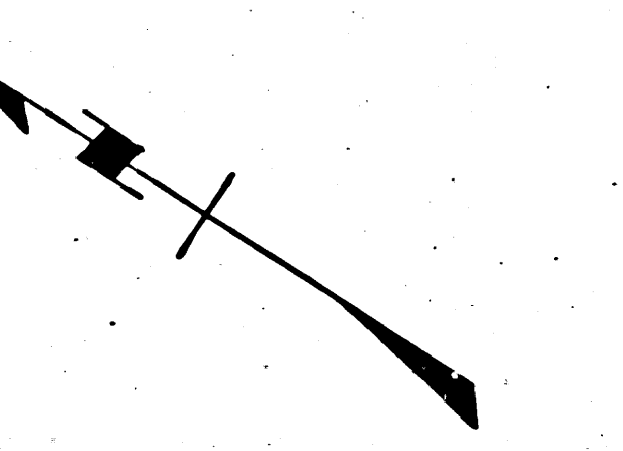
PAGE 10

DOUBLE SCALE

NO CHARGE FOR CONNECTIONS

21,091

PC 3384



Trim Line

Page Trim Line