

Trim Line

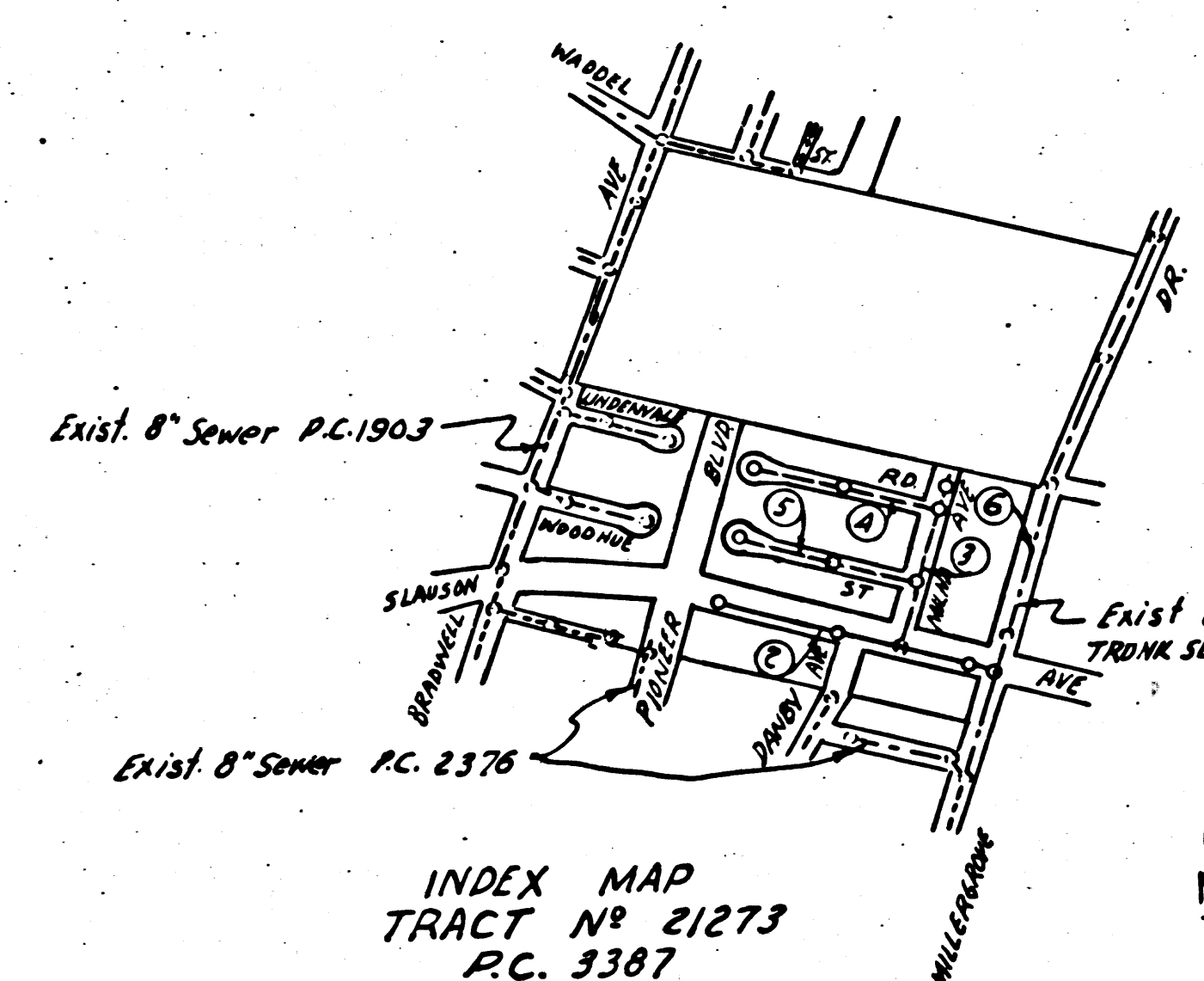
**NOTE: WHITTIER BLDG DIST NO 11**

Provide stakes on the property lines or property lines produced at right angles to the sewer line at the center line of each manhole.  
No representative of the County Engineer will survey or layout any portion of the work.  
The owner or his authorized representative shall furnish the County Engineer with grade sheets and stations for all house laterals and Y branches and shall provide stakes for them at their proper locations with stationing plainly marked. Any change in location shall be requested in writing by the owner or his representative.  
No revisions shall be made in these plans without the approval of the County Engineer.

1. Use standard manhole frames and covers, S-a-117.
2. Use standard strength pipe except as noted.
3. Use cement mortar for all vitrified clay pipe joints.
4. Resurface all trench within paved area to meet L.A. County Road Dept. or California State Highway Dept. requirements in accordance with permit.
5. Encase four feet of sewer at points of interference with poles, S-a-119.
6. House laterals to be constructed with inverts at property line 6 feet below curb grade except as noted.
7. All structures shall be brick sewer structures, S-a-104.
8. For allowable leakage test, use Formula No. 1, Spec's., Sec. 51.
9. Manhole tops in unimproved Rights-Of-Way to be 6" above finish grade.

B.M. SY 2916 E1. 152.018 Lead & Pack S. edge Dr. to house # 8523 Millergrrove 372 W. of E Millergrrove.

SHEET	PAGE
1	1-3
2	4-6



Before breaking into any existing structure and before final acceptance of this work, County Sanitation District should be notified in order that required inspection may be made.

REVISION APPROVED:  
By R. P. Collins 10-25-55  
Office of County Engineer, Reg. C. E. No. 7860  
Note: This Change of Plan does not alter the Sewer Bond & Agreement Stipulation for Sewer Construction for the entire Tract.

COLLECT CHARGES AS INDICATED  
-9 Dollars 2-18-55

PROFILE, ALIGNMENT AND GRADE OF  
**SANITARY SEWERS**  
TO BE CONSTRUCTED IN  
**TRACT NO 21273**

P.C. 3387  
Page 1  
21,827

PRIVATE CONTRACT NO. 3387  
W. S. 36  
TWO SHEETS

Scale: VERT. 1"=4'  
HORIZ. 1"=40'  
FEB. 1955  
PREPARED IN THE OFFICES OF  
**BARCLAY SURVEYING CO.**  
R. P. Collins  
Reg. C. E. No. 1137

FOR LEGEND SEE PLAN NO. S-a-64.

**NOTE:**  
Grades to which this improvement is to be constructed are shown on plans and profiles. Grade points for top of curbs, center line of streets, or center line of alleys are shown by circles on profiles. At all points between designated points the grade shall be established so as to conform to a straight line drawn between said designated points.  
Elevations are in feet above U.S.G.S. datum or mean sea level.  
This drawing and the data hereon are hereby made a part of the specifications.  
Work shall be constructed according to specifications on file in the office of the County Engineer and shall be prosecuted only in the presence of the County Engineer.  
Before work can be started, the contractor must obtain a permit to excavate in County streets from the L.A. County Road Dept., 108 W. 2nd St. and make a deposit with the County Engineer, 733 L.A. County Engineering Building, sufficient to cover the cost of construction inspection and record plans.  
Approval of this plan by the County of Los Angeles does not constitute a representation as to the accuracy of the location of or the existence or non-existence of any underground utility, pipe, or structure within the limits of this project. This note applies to all sheets.  
If work is to be done in a State Highway, a permit must be obtained from the State of California, Division of Highways, 120 South Spring Street.

**COUNTY OF LOS ANGELES, CALIFORNIA**  
Approved, William J. Fox, County Engineer  
Approved, A. M. Rawn  
CHIEF ENGR. CO. SAN DIST. NO. 18  
By R. P. Collins Sanitation Engineer  
By A. M. Rawn Office Engineer  
Checked by R. P. Collins 2-18-55  
Office of County Engineer, Reg. C. E. No. 7860

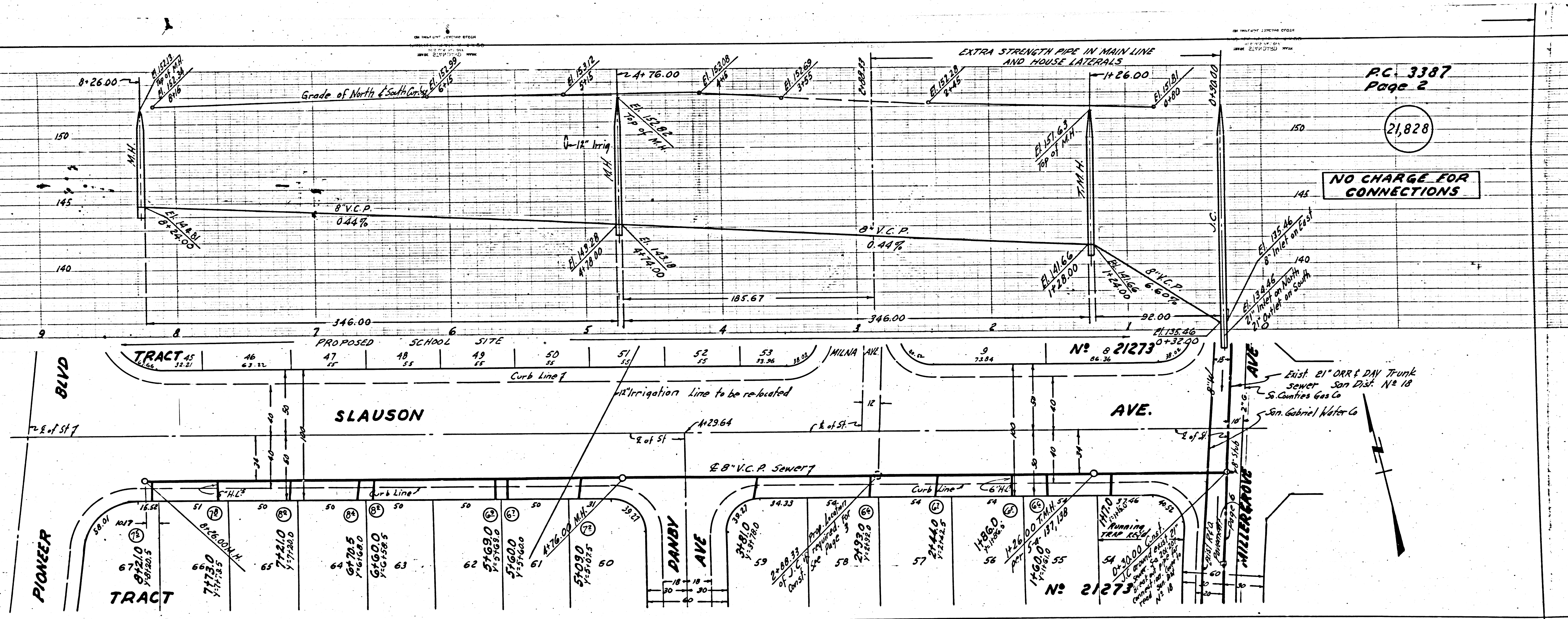
(6) 20

Trim Line



PC 3387  
Page 3

PLACE FOR  
SECTIONS



PC 3387  
Page 2

21,828

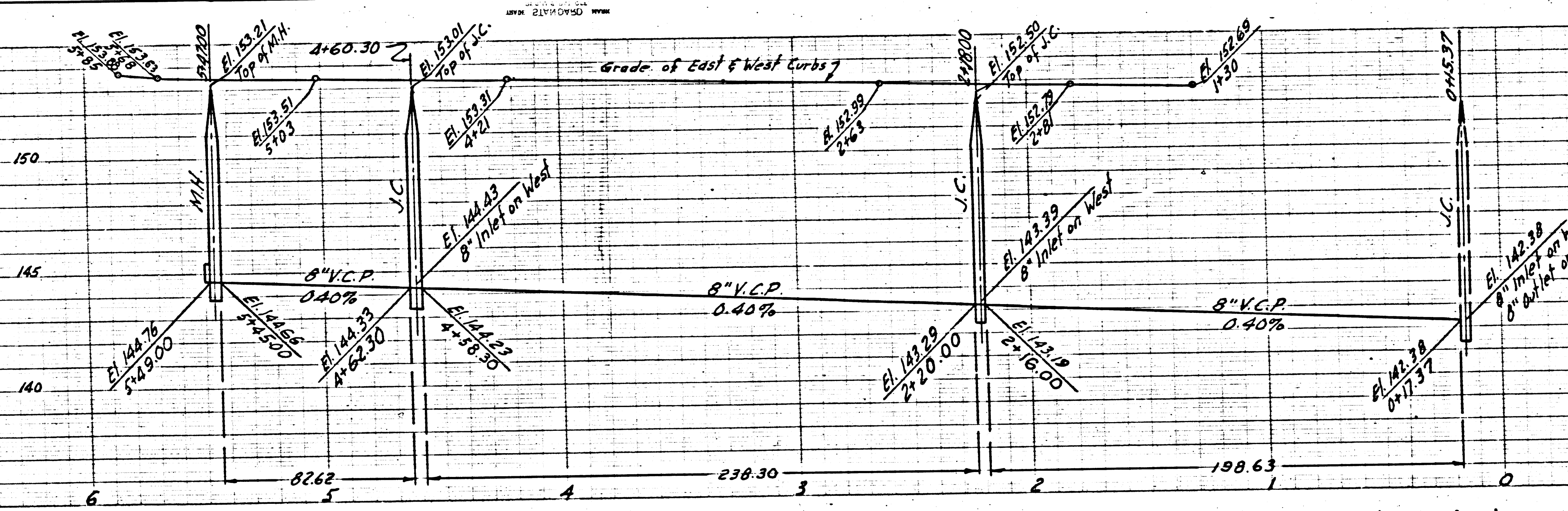
NO CHARGE FOR  
CONNECTIONS

Exist 21" ORR & DAY Trunk  
Sewer San Dist. N# 18  
San Gabriel Water Co

NO CHARGE FOR  
CONNECTIONS



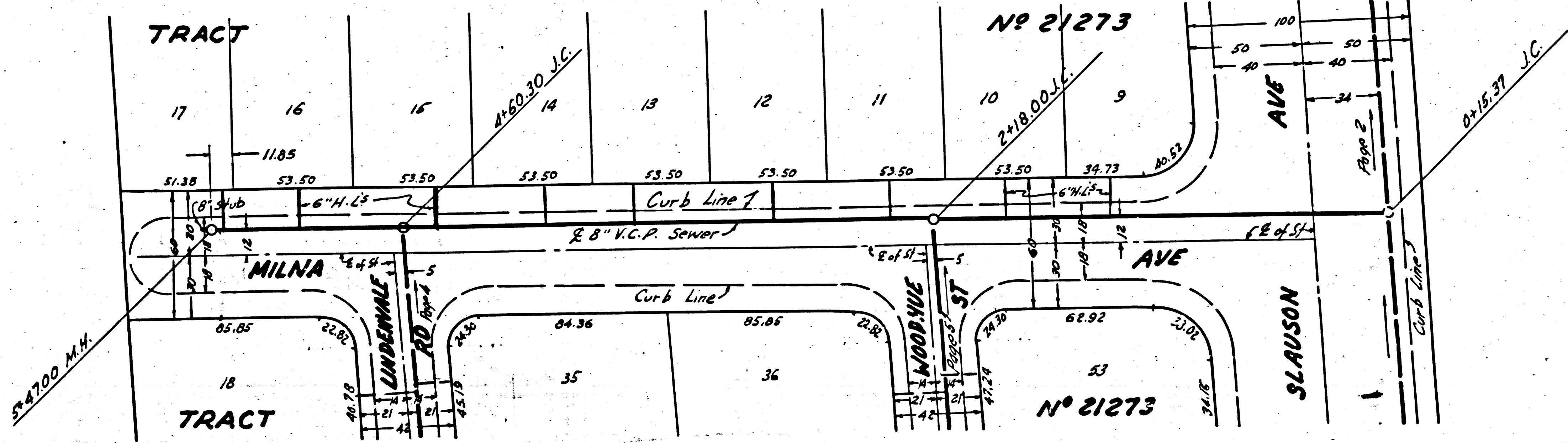
Trim line 1



PC. 3387  
Page 3

NO CHARGE FOR CONNECTIONS

PC 3387



Trim line 2

