

Trim Line

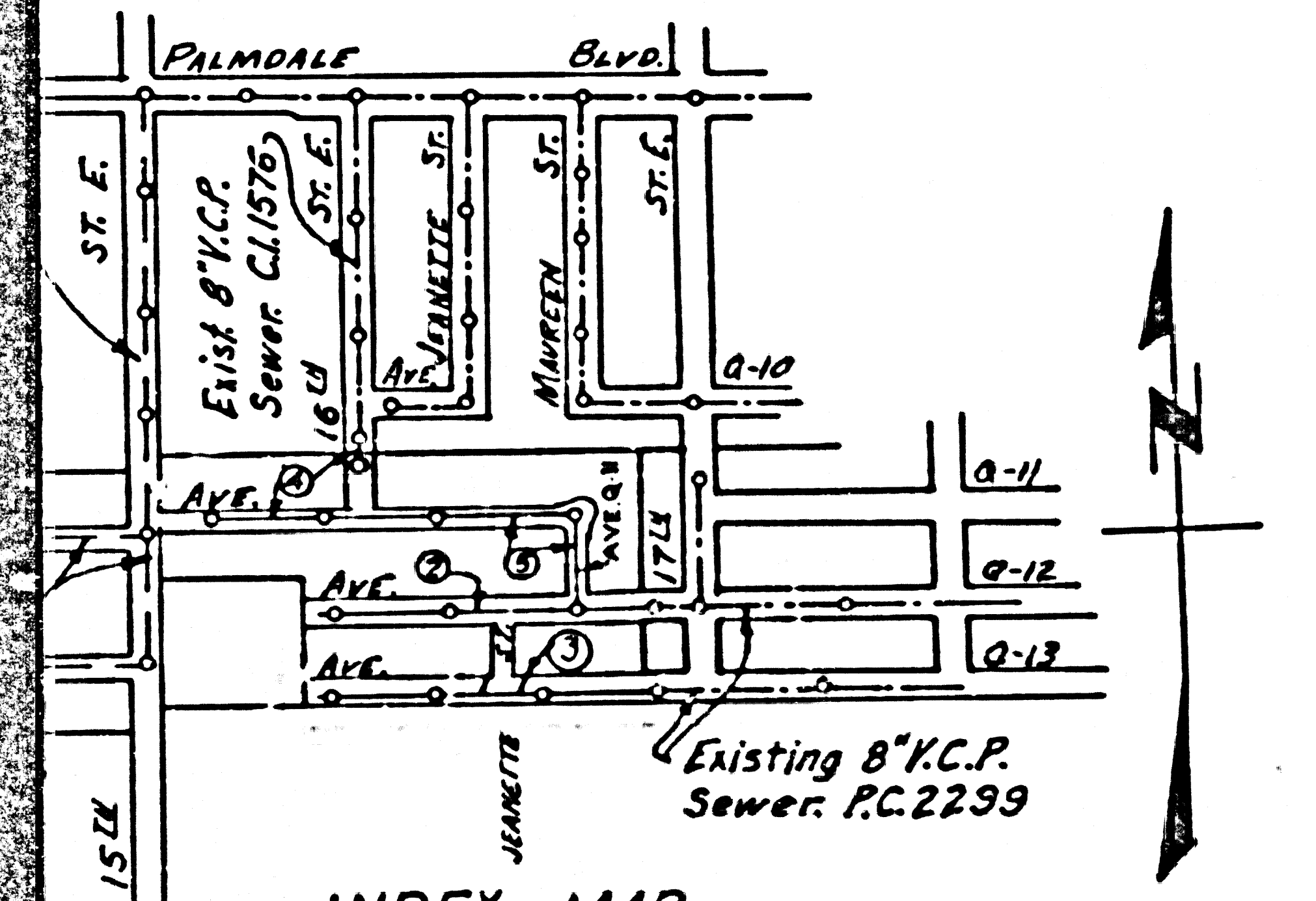
SHT 1 of 1

E. COR. AVENUE Q-8 & 15TH STREET EAST  
S.W. COR. OF CONC. WEIR BOX F.B. 1382-66  
ELEV. 2630-639 ADD. 0.44' FT TO ADJUST  
LET NEAR END OF CURB S.W. COR. OF  
STREET EAST L.A.C.S.L. 624-5 ELEV. 2605-405

### PALMDALE BLDG. DIST. N<sup>o</sup> 8P

#### NOTE:

- Provide stakes on the property lines or property lines produced at right angles to the sewer line at the center line of each manhole.
- No representative of the County Engineer will survey or layout any portion of the work.
- The owner or his authorized representative shall furnish the County Engineer with grade sheets and stations for all house laterals and Y branches and shall provide stakes for them at their proper locations with stationing plainly marked. Any change in location shall be requested in writing by the owner or his representative.
- No revisions shall be made in these plans without the approval of the County Engineer.
1. Use standard manhole frames and covers, S-a-117.
  2. Use standard strength pipe.
  3. Use cement mortar for all vitrified clay pipe joints.
  4. Resurface all trench within paved area to meet L.A. County Road Dept. or California State Highway Dept. requirements in accordance with permit.
  5. Encase four feet of sewer at points of interference with poles, S-a-119.
  6. House laterals to be constructed with inverts at property line 6 feet below curb grade except as noted.
  7. All structures shall be brick sewer structures, S-a-104.
  8. For allowable leakage test, use Formula No. 1, Spec's., Sec. 51.
  9. Manhole tops in unimproved Rights-Of-Way to be 6" above finish grade.
  10. BALL ALL PIPE JOINTS WITH 4" CEMENT MORTAR THAT ARE WITHIN 20 FEET OF ALL PROPERTY LINES OR IN SAN. SEWER R/W'S.



INDEX MAP  
TRACT N<sup>o</sup> 19899  
P.C. 3393  
Scale 1"=600'

CONNECTION CHARGES  
AS INDICATED  
*L. Carter 4-4-56*

Sheet	Pages
1	1-5

PROFILE, ALIGNMENT AND GRADE OF  
SANITARY SEWERS  
TO BE CONSTRUCTED IN

## TRACT N<sup>o</sup> 19899

P.C. 3393  
PAGE 1

22,914

PRIVATE CONTRACT NO. 3393  
W. S. 65  
1 SHEET

Scale: VERT. 1"=4'  
HORIZ. 1"=40' FEBRUARY, 1955  
PREPARED IN THE OFFICES OF

RALPH B. NUNNELLEY

*Ralph B. Nunnelley*  
Reg. C. E. No. 8080

FOR LEGEND SEE PLAN NO. S-a-64

#### NOTE:

Grades to which this improvement is to be constructed are shown on plans and profiles. Grade points for top of curbs, center line of streets, or center line of alleys are shown by circles on profiles. At all points between designated points the grade shall be established so as to conform to a straight line drawn between said designated points.

Elevations are in feet above U.S.C. & G.S. Mean Sea Level Data of 1929

This drawing and the data hereon are hereby made a part of the specifications.

Work shall be constructed according to specifications on file in the office of the County Engineer and shall be prosecuted only in the presence of the County Engineer.

Before work can be started, the contractor must obtain a permit to excavate in County streets from the L.A. County Road Dept., 108 W. 2nd St. and make a deposit with the County Engineer, Rm 324, 253 So. Broadway, L.A. sufficient to cover the cost of construction inspection and record plans.

Approval of this plan by the County of Los Angeles does not constitute a representation as to the accuracy of the location of or the existence or non-existence of any underground utility, pipe, or structure within the limits of this project. This note applies to all sheets.

If work is to be done in a State Highway, a permit must be obtained from the State of California, Division of Highways, 120 South Spring Street.

#### COUNTY OF LOS ANGELES, CALIFORNIA

Approved, William J. Fox, County Engineer

Approved, A. M. Rawn

*A. P. Collins*  
Sanitation Engineer

*A. M. Rawn*  
Office Engineer

Checked By: *R. P. ...* 4-4-56  
Office of County Engineer, Reg. C. E. No. 7860

*Revised 6-20-56 M. Carey*

Trim Line

TRACT N<sup>o</sup> 19899

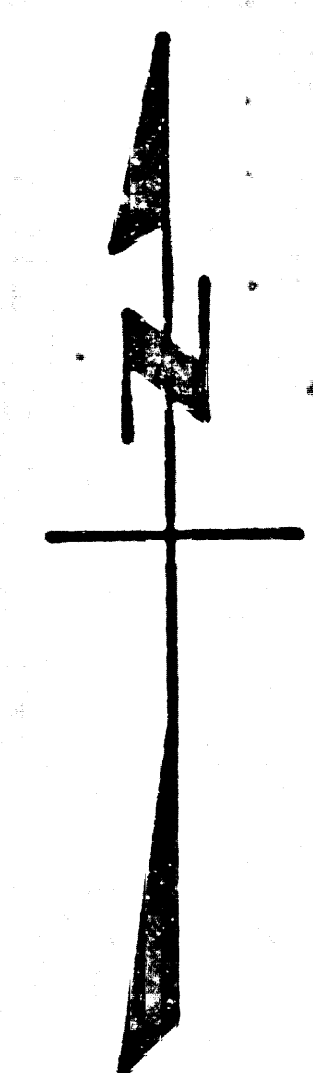
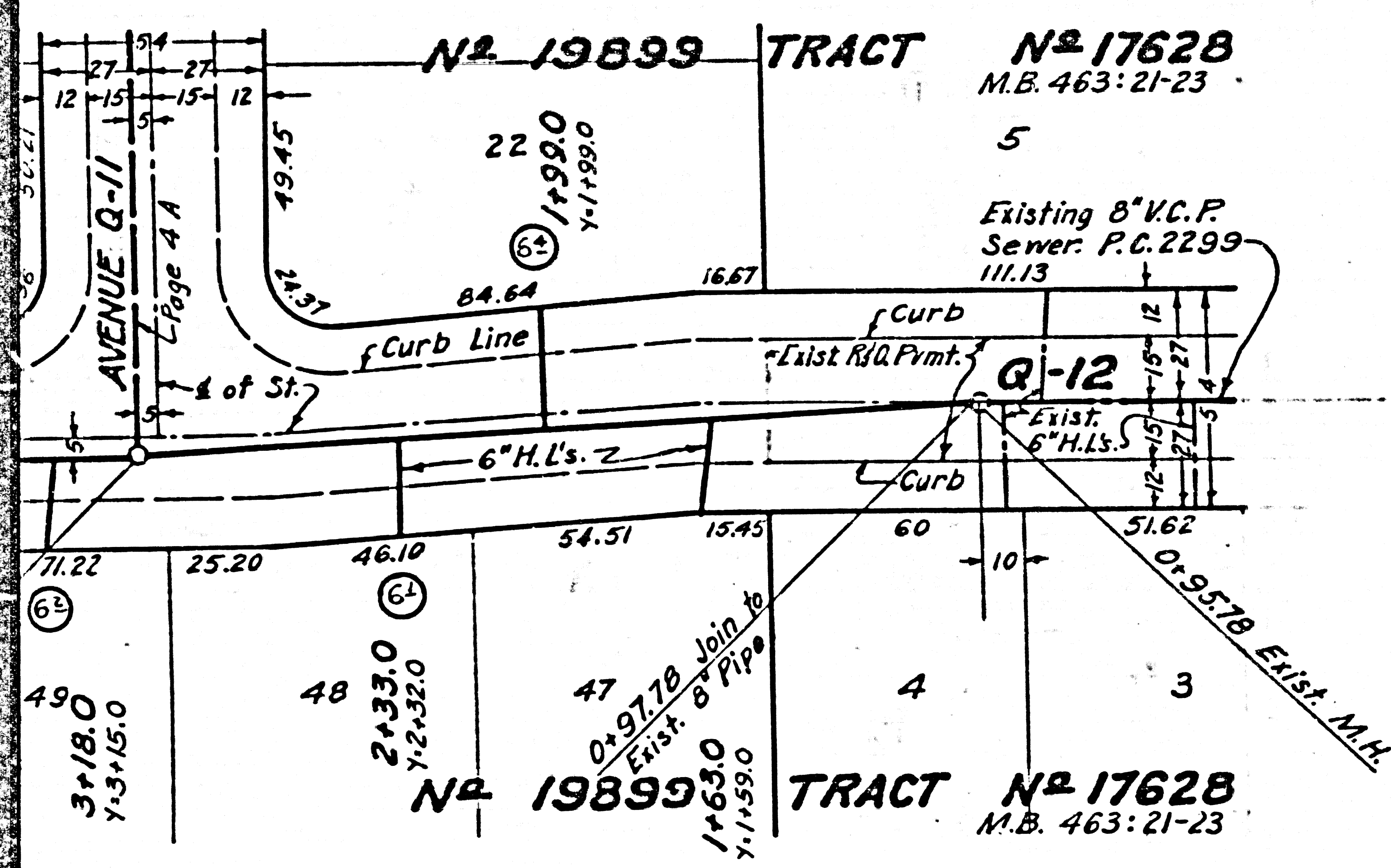
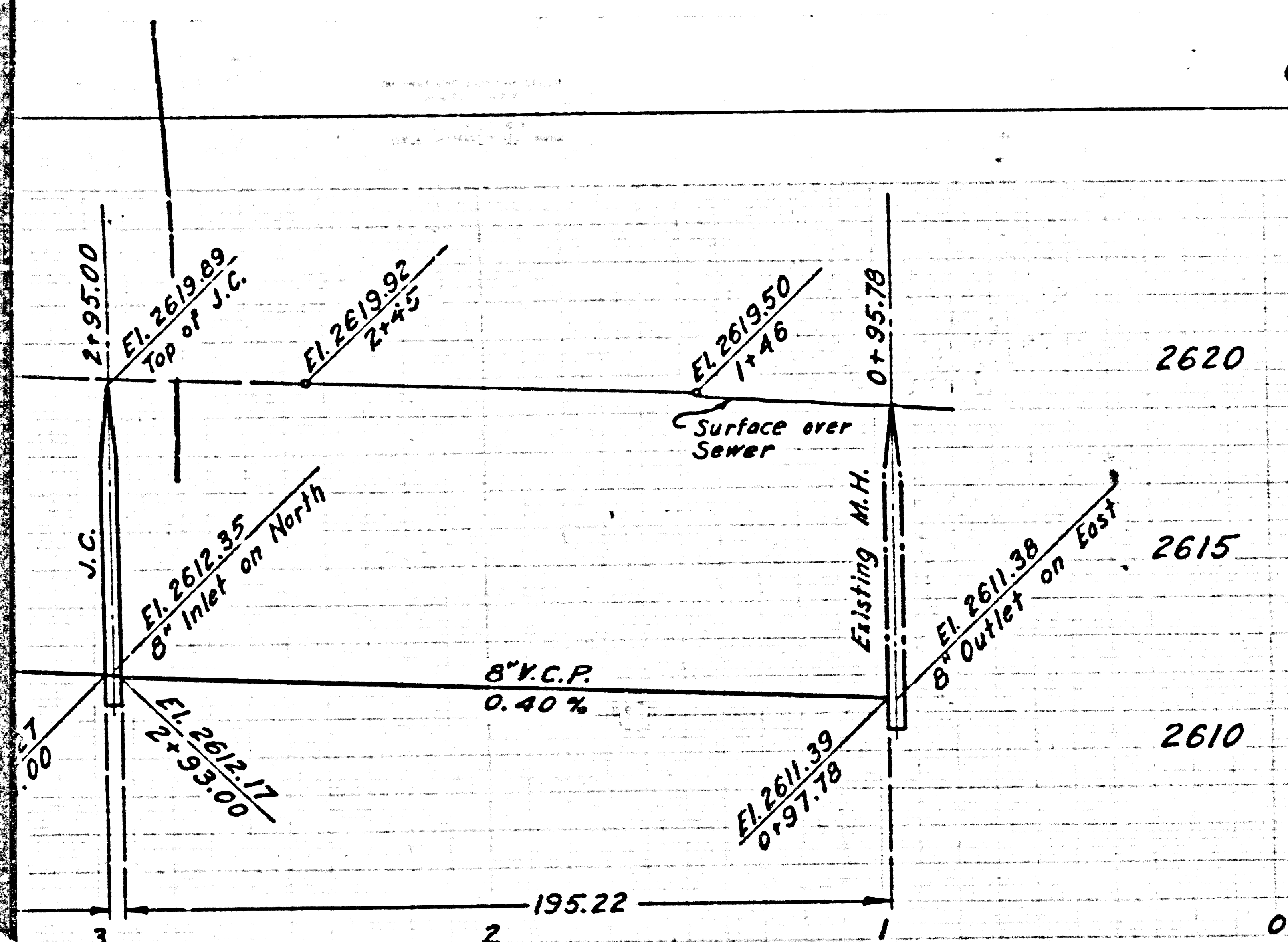
P.C. 3393

SHT 1 of 1

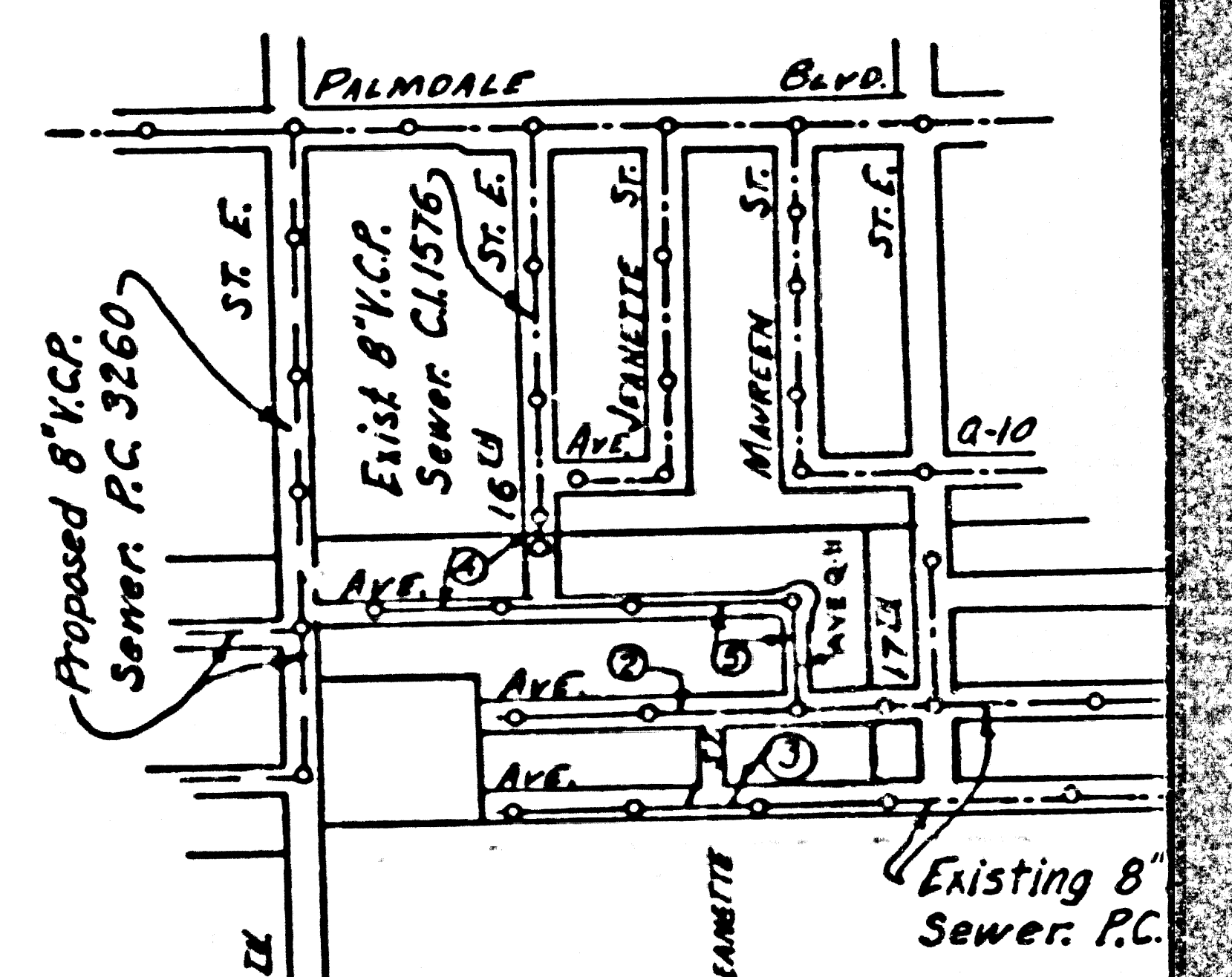
P.C. 3393  
PAGE 2

NO CHARGE FOR  
CONNECTION

22,915



T.B.M. #2 N.E. COR. AVENUE Q-8 & 15<sup>TH</sup> STREET  
 BT. SPK. IN S.W. COR. OF CONC. WEIR BOX F.B. 139  
 1952 ADJ. ELEV. 2630-639 ADD. 0.44' FT TO ADJ.  
 TO C.S.B.M. C.G. LET NEAR END OF CURB S.W. CO.  
 Q-8 & 10<sup>TH</sup> STREET EAST L.A. C.S.L. 624-5 ELEV.



INDEX MAP  
 TRACT N<sup>o</sup> 19899  
 P.C. 3393  
 Scale 1"=600'

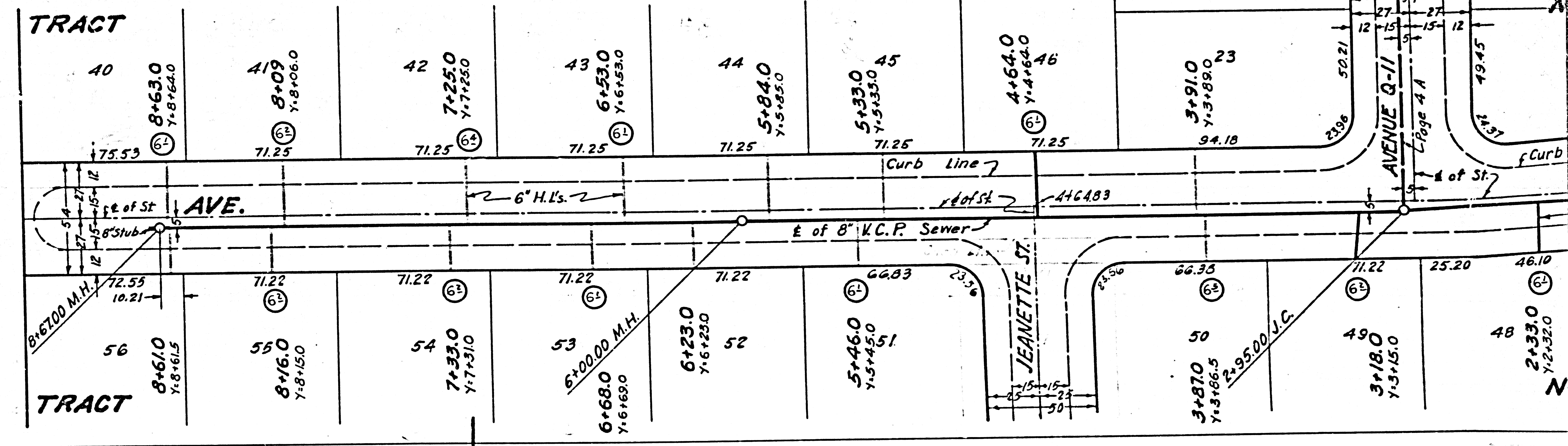
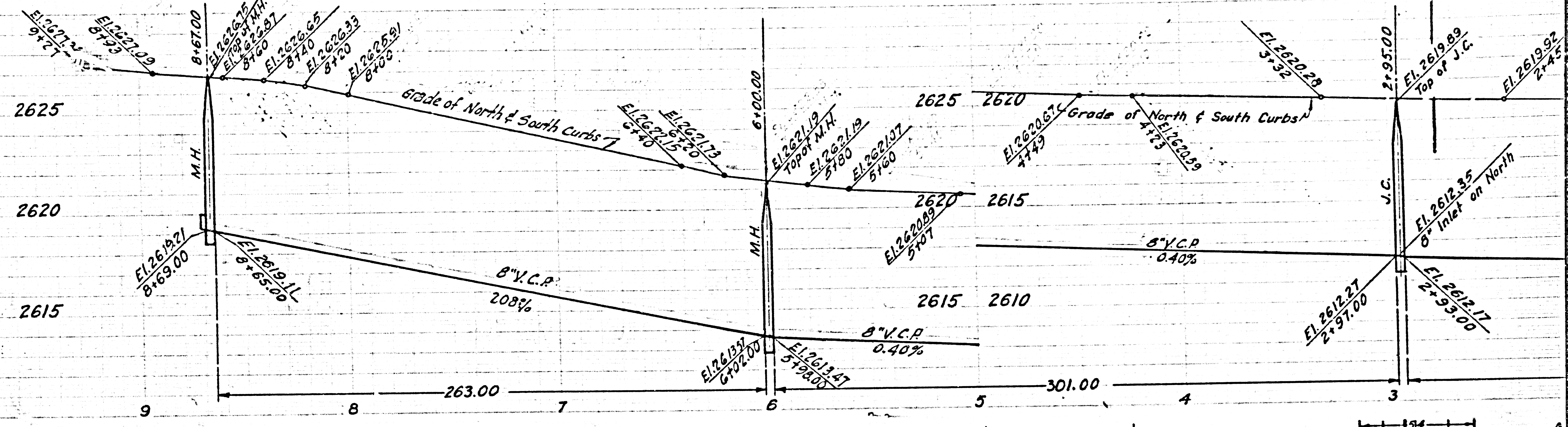
Revised 6-20-5

P.C. 3393 SHT 1 of 1 Pg 3

P.C. 3393  
SHEET

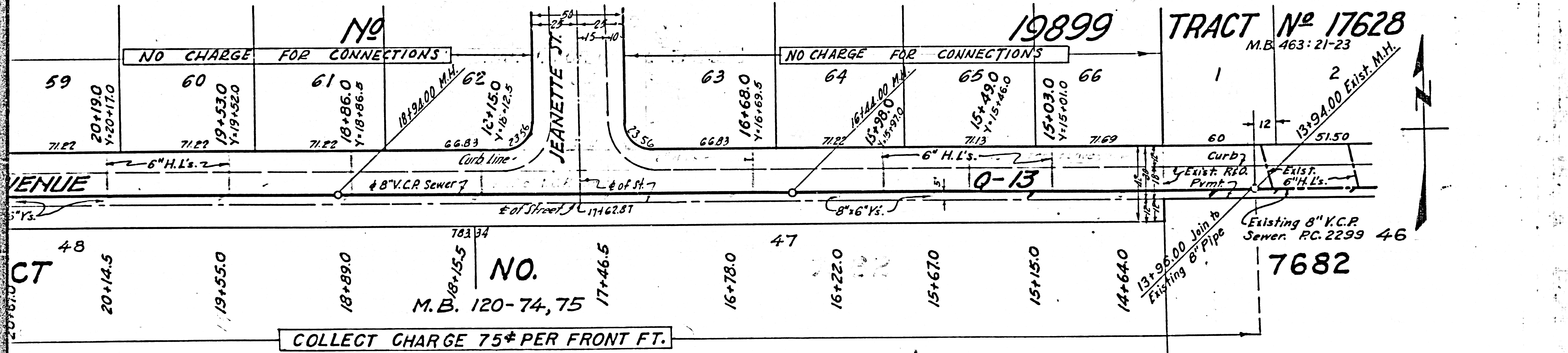
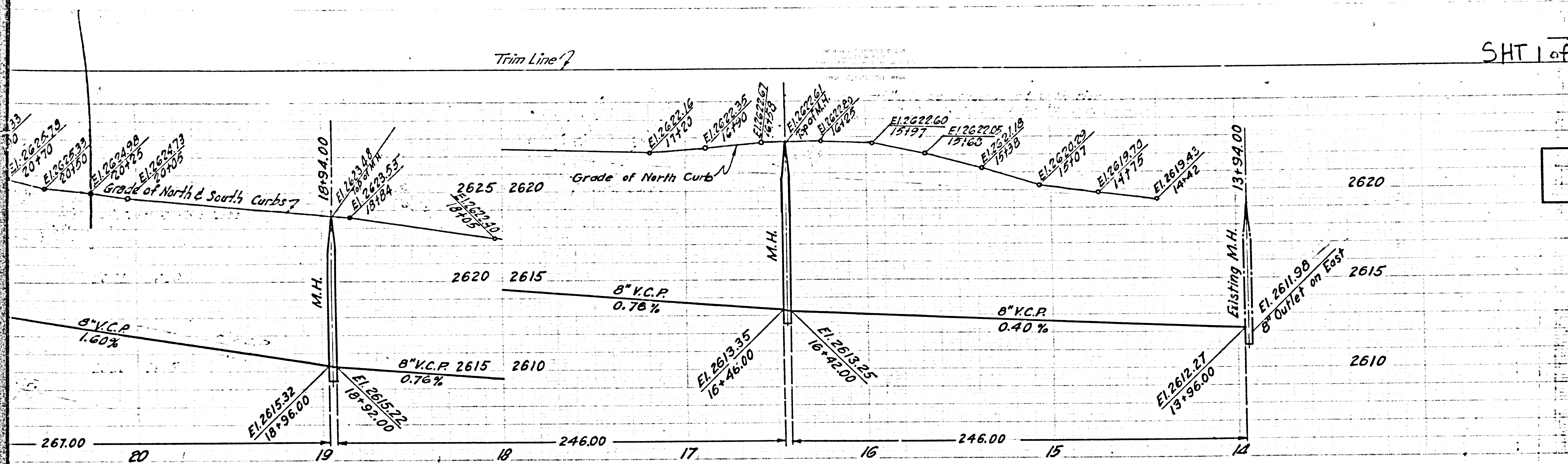
SECTION  
LINES AS  
SHOWN

16



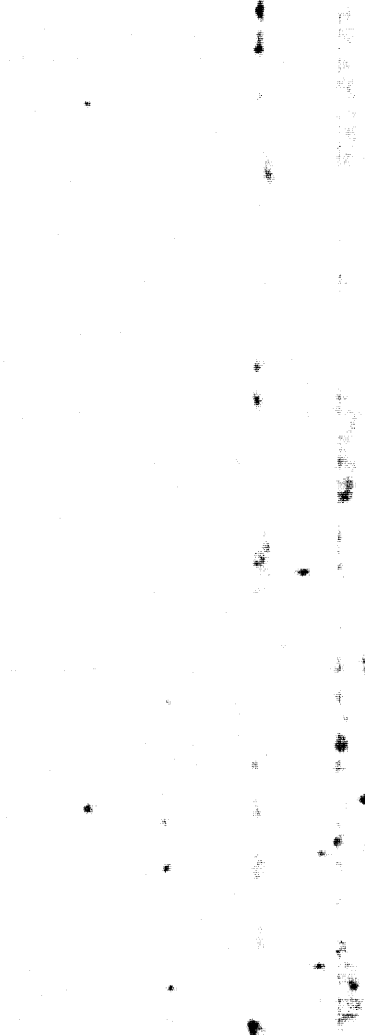
CONNECTION  
CHARGES AS  
INDICATED

22,916



19899 TRACT No 17628  
M.B. 463: 21-23

7682

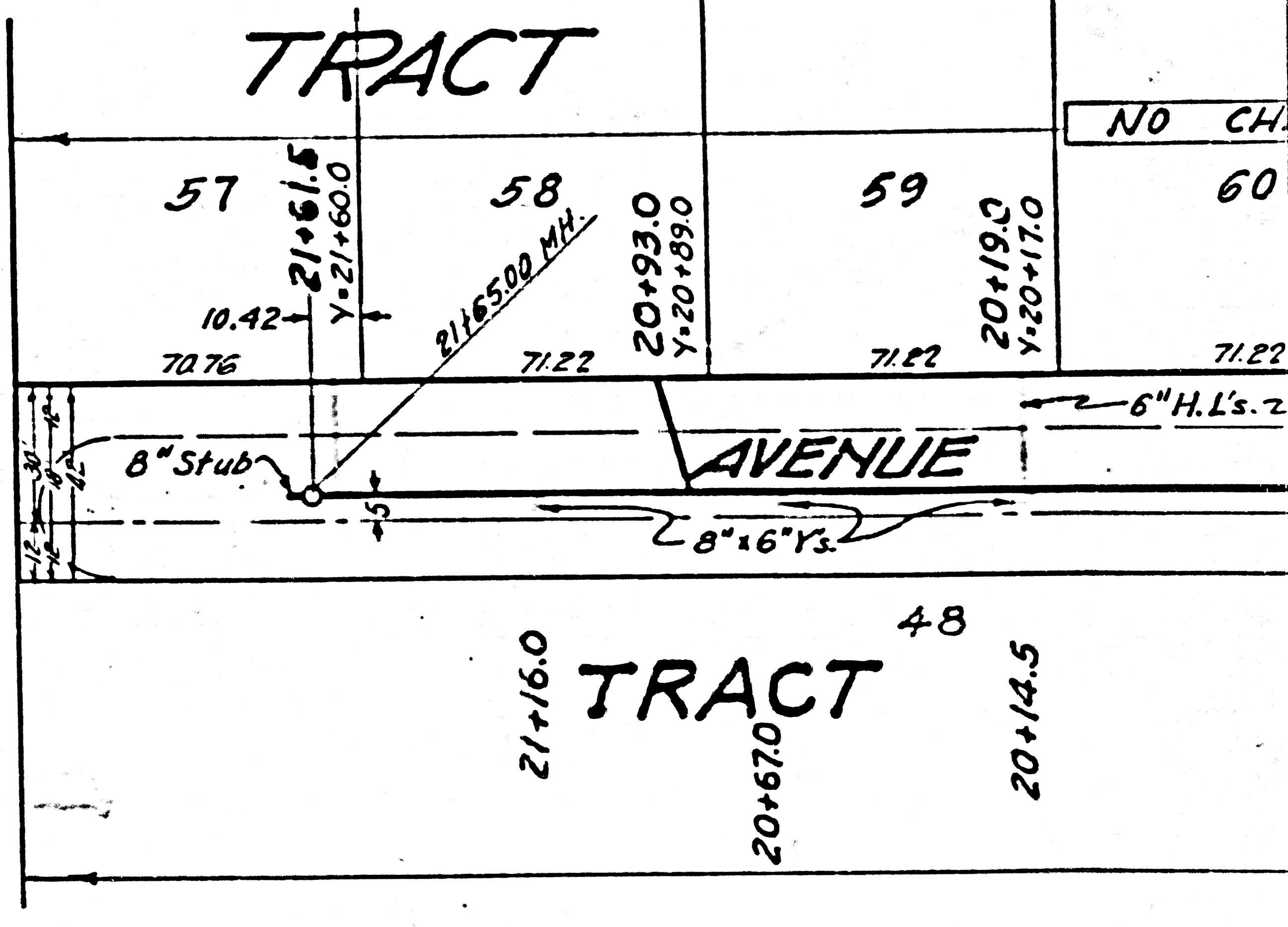
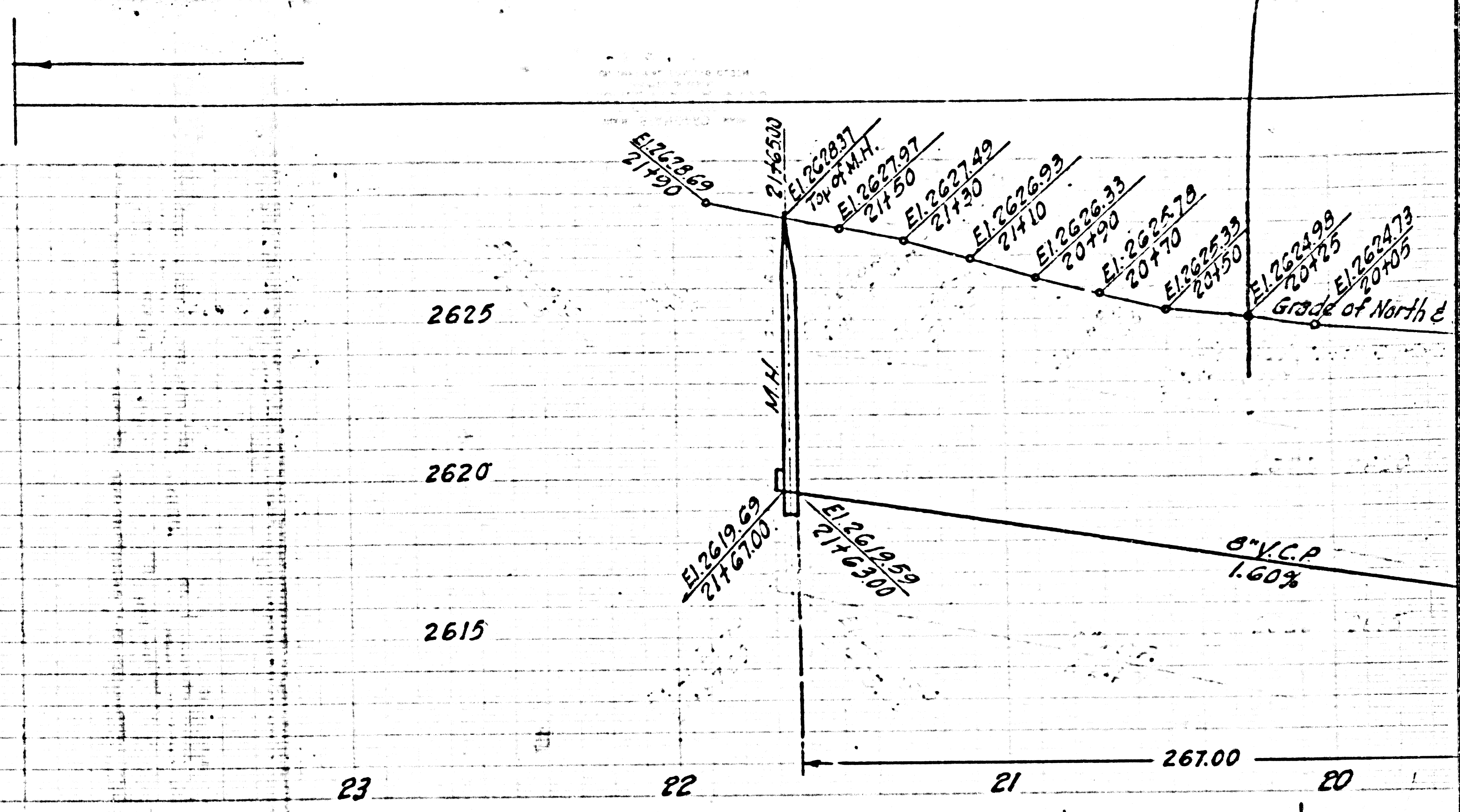
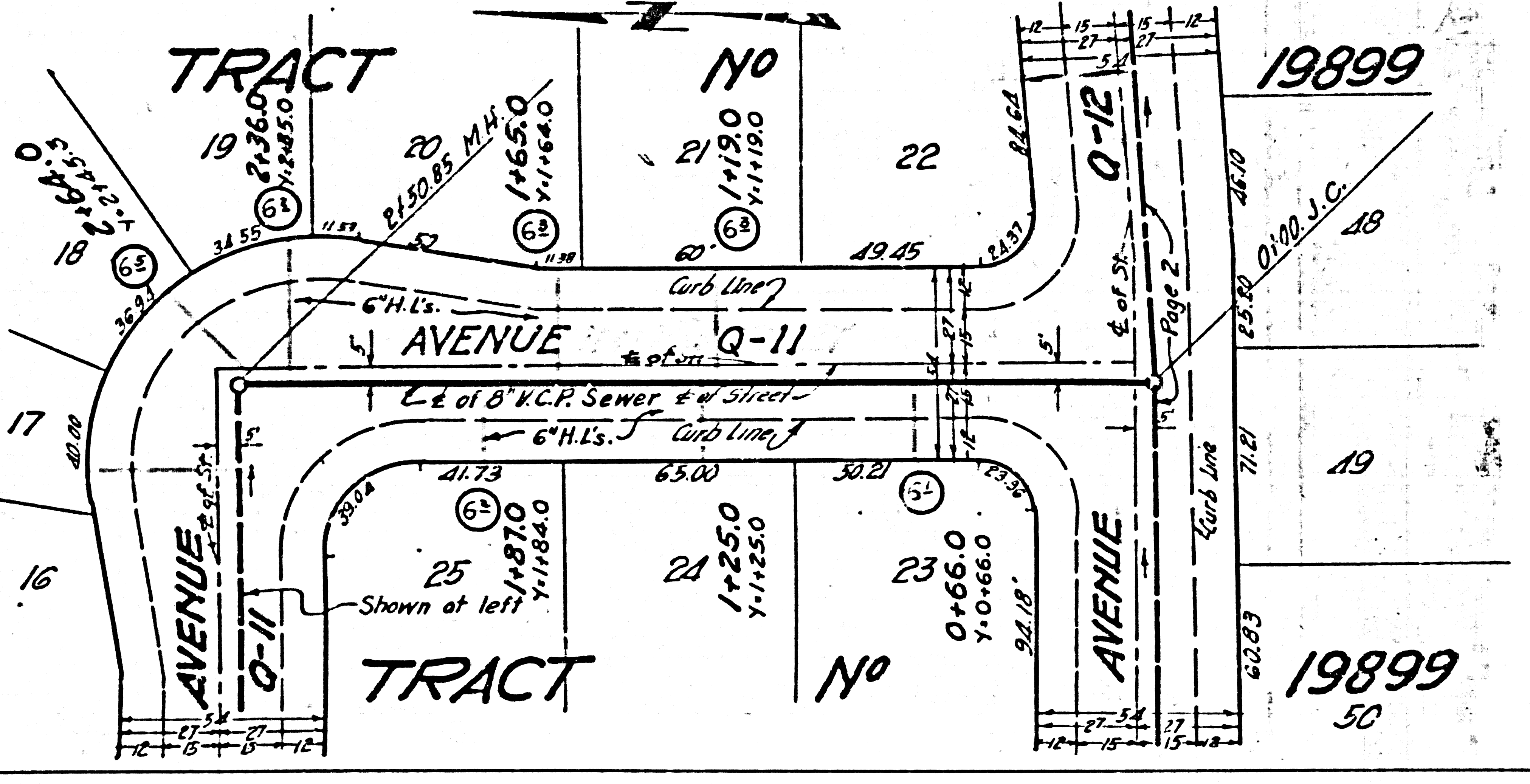
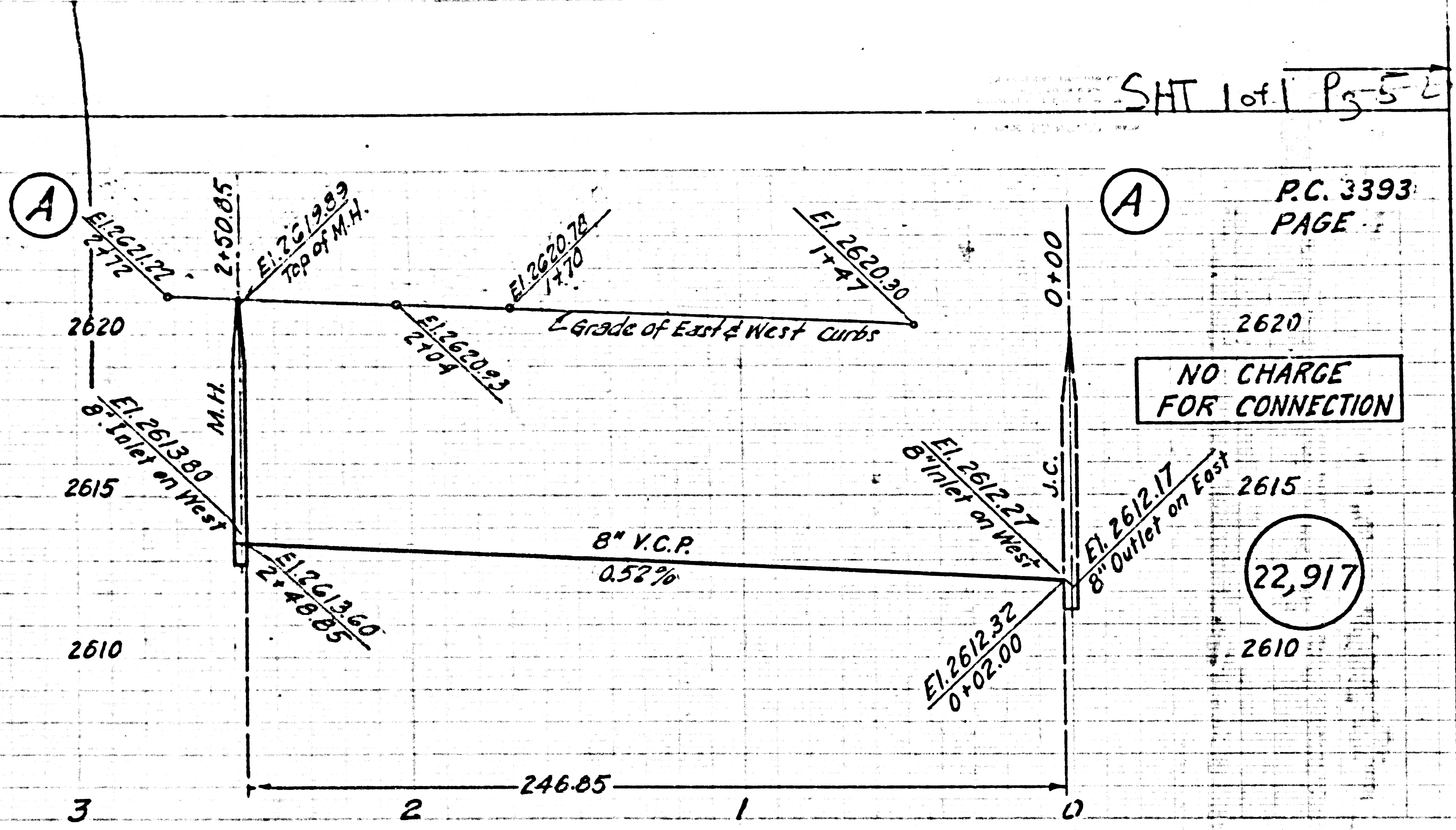


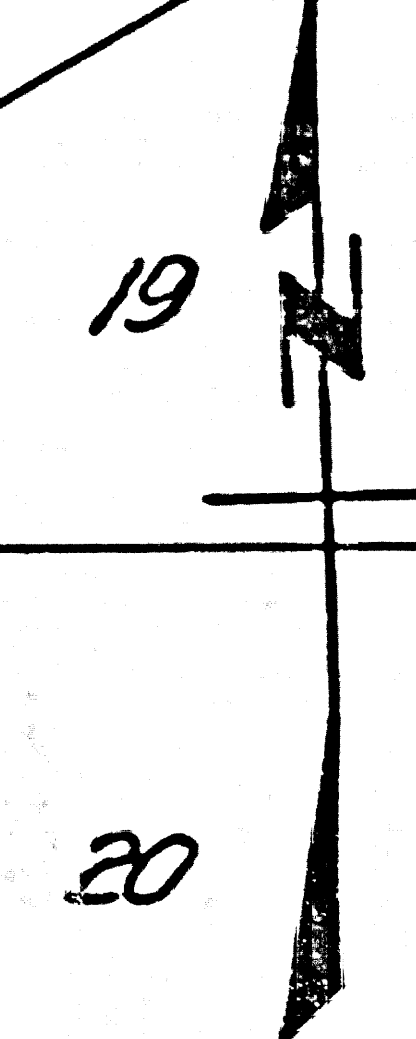
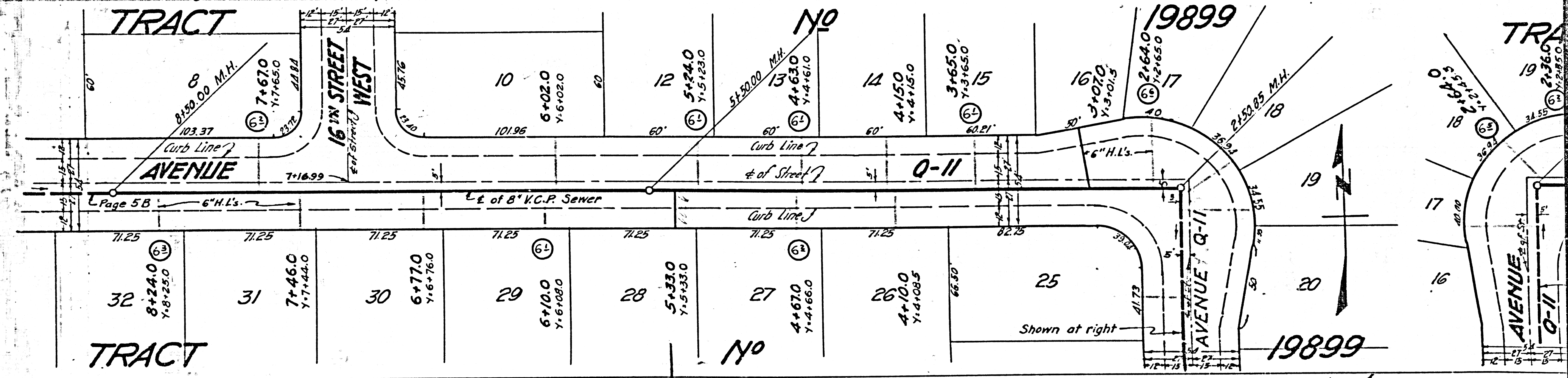
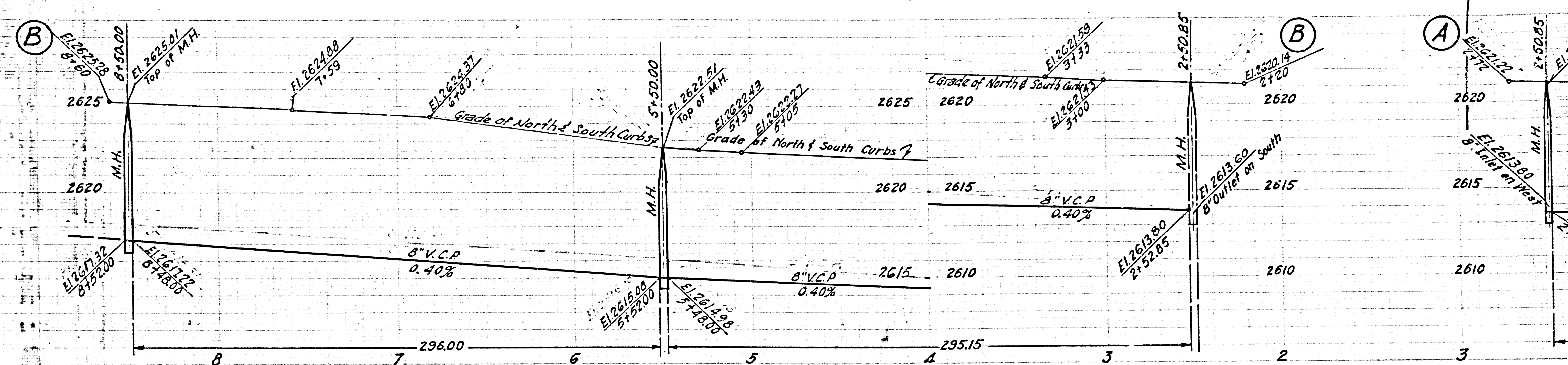
SHT 1 of 1 Pg 52

P.C. 3393  
PAGE

NO CHARGE  
FOR CONNECTION

22,917





TRACT

TRACT

TRA

No

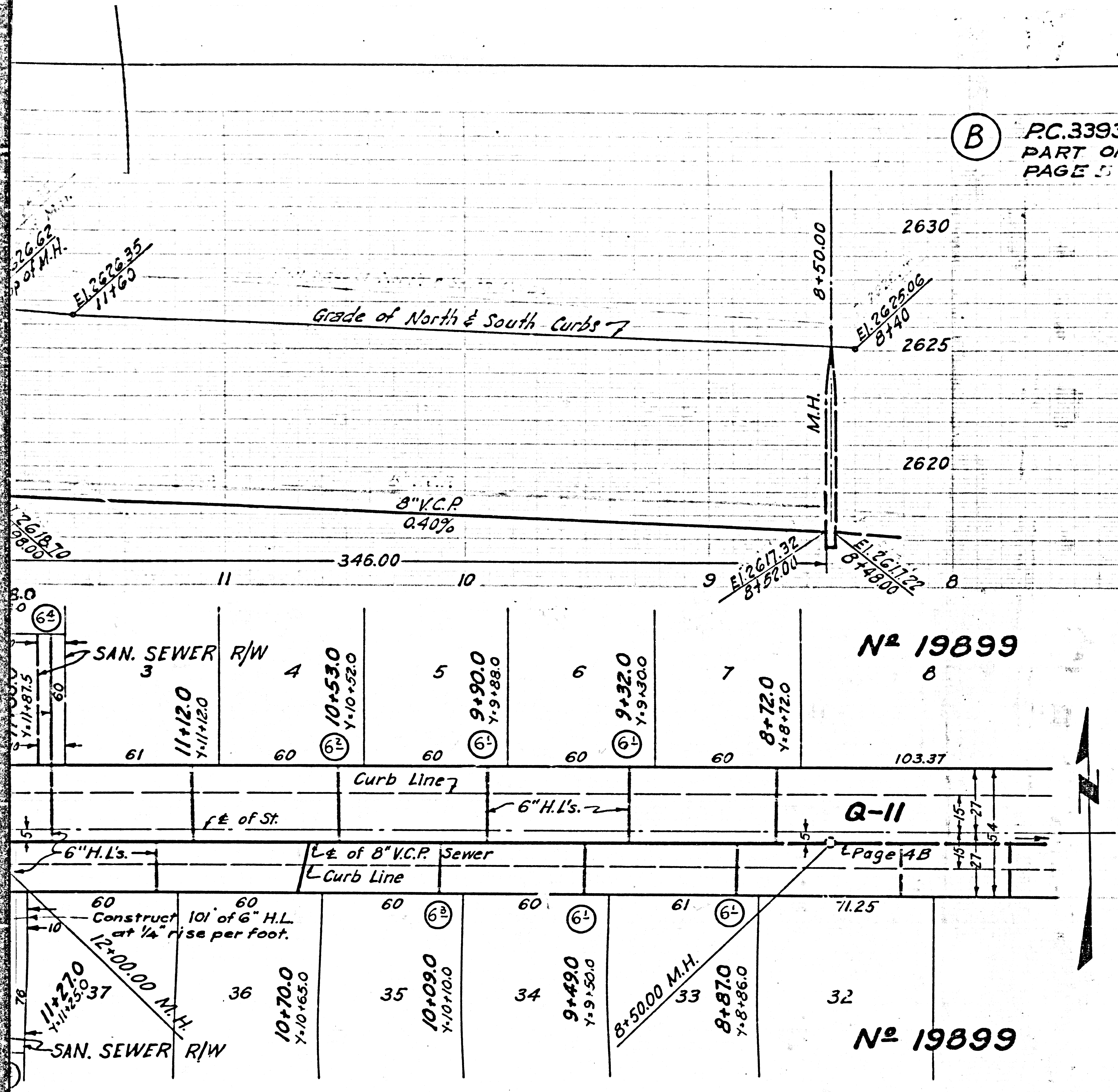
No

19899

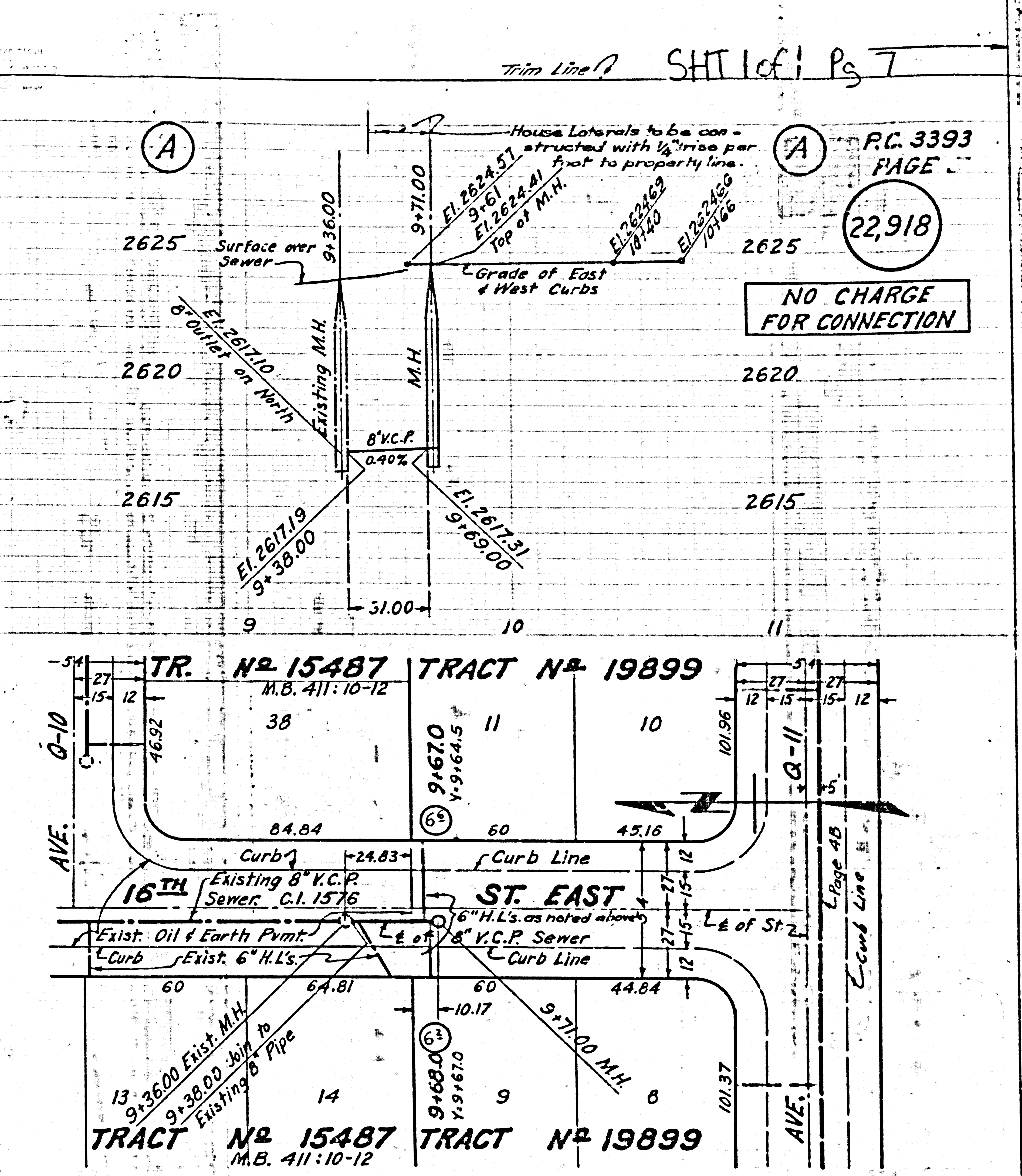
19899

Page 5B

Shown at right



(B) P.C. 3393  
PART OF  
PAGE 5



(A) P.C. 3393  
PAGE 7  
22,918

NO CHARGE  
FOR CONNECTION

N <sup>o</sup> 19899				
3	4	5	6	7
11+120 7-11+120	10+530 7-10+520	9+900 7-9+880	9+320 7-9+300	8+720 7-8+720
60	60	60	60	60
Curb Line				
f.e. of St.				
6" H.L.'s.				
L.E. of 8" V.C.P. Sewer				
Curb Line				
Construct 101' of 6" H.L. at 1/4" rise per foot.				
L Page 4B				
N <sup>o</sup> 19899				
36	35	34	33	32
10+700 7-10+650	10+090 7-10+100	9+490 7-9+500	8+500 M.H. 8+870 7-8+860	
60	60	61	61	60
Curb Line				

TR. N <sup>o</sup> 15487 TRACT N <sup>o</sup> 19899		
38	11	10
1692	9+670 7-9+645	
60	60	60
Curb Line		
24.83		
ST. EAST		
6" H.L.'s. as noted above		
L.E. of 8" V.C.P. Sewer		
Curb Line		
L Page 4B		
TRACT N <sup>o</sup> 15487 TRACT N <sup>o</sup> 19899		
14	9	8
13+3600 Exist. M.H. 9+3800 Join to Existing 8" Pipe	9+690 7-9+670	9+7100 M.H.
60	60	60
Curb Line		

P.C. 3393 SHT 1 of 1 Pg 8

(B)

