

(LOMITA BLDG. DIST. NO. 7L.)

NOTE:

Provide stakes on the property lines or drop-ery lines produced at right angles to the sewer line at the center line of each manhole. No representative of the County Engineer will survey or layout any part of the work.

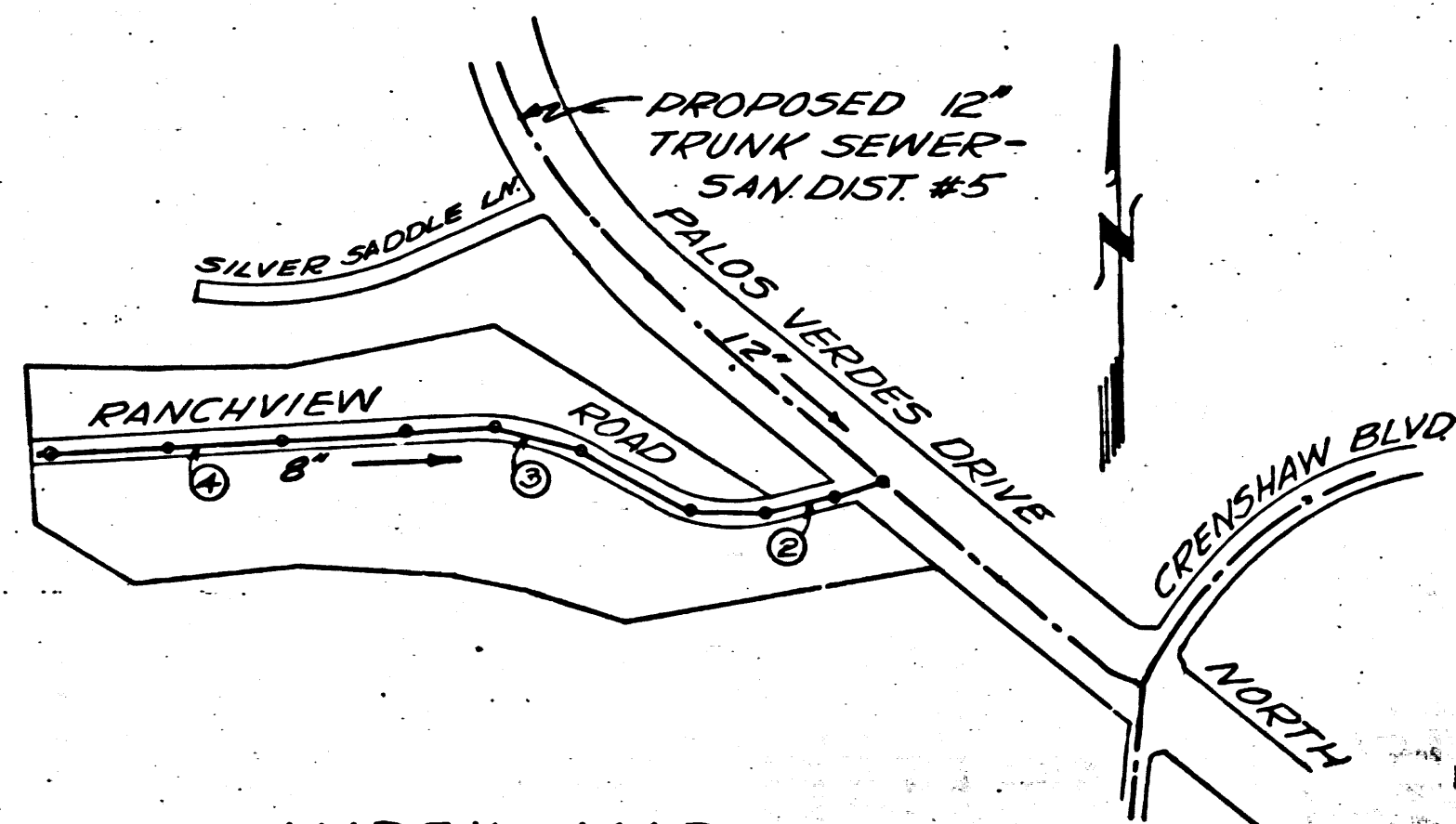
The owner or his authorized representative shall furnish the County Engineer with grade sheets and stations for all house laterals and Y branches and shall provide stakes for them at their proper locations with stationing plainly marked. Any change in location shall be requested in writing by the owner or his representative. No revisions shall be made in these plans without the approval of the County Engineer.

1. Use standard manhole frames and covers, S-a-117, Except as noted.
2. Use standard strength pipe except as noted.
3. Use cement mortar for all vitrified clay pipe joints.
4. Resurface all trench within paved area to meet L. A. County Road Dept. or Calif. State Highway Dept. requirements in accordance with permit.
5. Encase four feet of sewer at points of interference with poles, S-a-119.
6. House laterals to be constructed with inverts at property line 5 feet below grade of centerline of street.
7. All structures shall be brick sewer structures, S-a-106, Except as noted.
8. Manhole tops in unimproved Rights-Of-Way to be 6" above finish grade.
9. For allowable leakage test, use formula No. 1, Spec's., Sec. 51.

BY ELEV 48329 CSFB 1504 Pg. 1
Cmc 1999 120 left of 2c 512
1/3+703 Palos Verdes Drive
North

NO CHARGE
FOR CONNECTIONS
Ref. 2-31-55

TABLE	
SHEET NO.	PAGES
1	1-4



INDEX MAP
SCALE 1"=600'
TRACT NO. 19539
P.C. 3396

Check 2.5-19-55 M. Mann

PLAN, ALIGNMENT AND GRADE OF
SANITARY SEWERS
TO BE CONSTRUCTED IN

TRACT NO. 19539

PRIVATE CONTRACT NO. 3396
W.S. 27
(1) SHEET

SCALE: Vert: 1"=8'
Horiz: 1"=40'

(FEB), 1955

PREPARED IN THE OFFICES OF
PAUL E. IACONO PRIVATE ENGINEER

By Paul E. Iacono
Reg. C.E. No. 7857

FOR LEGEND SEE PLAN NO. S-a-64

NOTE:

Grades to which this improvement is to be constructed are shown on plans and profiles. Grade points for top of curbs, center line of streets, or center line of alleys are shown by circles on profiles. At all points between designated points the grade shall be established so as to conform to a straight line drawn between said designated points. Elevations are in feet above U.S.G.S. datum or mean sea level.

This drawing and the data hereon are hereby made a part of the specifications. Work shall be constructed according to specifications on file in the office of the County Engineer and shall be prosecuted only in the presence of the County Engineer. Before work can be started, the contractor must obtain a permit to excavate in County streets from the L. A. County Road Dept., 108 W. 2nd St. and make a deposit with the County Engineer, Room 526, 253 So. Broadway sufficient to cover the cost of construction, inspection and record plans.

Approval of this plan by the County of Los Angeles does not constitute a representation as to the accuracy of the location of or the existence or non-existence of any underground utility, pipe or structure within the limits of this project. This note applies to all sheets.

If work is to be done in a State Highway, a permit must be obtained from the State of California, Division of Highways, 120 South Spring Street.

COUNTY OF LOS ANGELES, CALIFORNIA

Approved, William J. Fox, County Engineer

Approved, A. M. Rawn

and before final acceptance of this work,

By J.P. Collins
Sanitation Engineer

By A. Matheson
Office Engineer

County Sanitation District should be notified

Checked By P. Kuhn 3-21-55

in order that required inspection may be made.

Office of County Engineer, Reg. C.E. No. 7840

P.C. 3396

PAGE 1

(20,468)

P.C. 3396

Ref.

3 1/2"

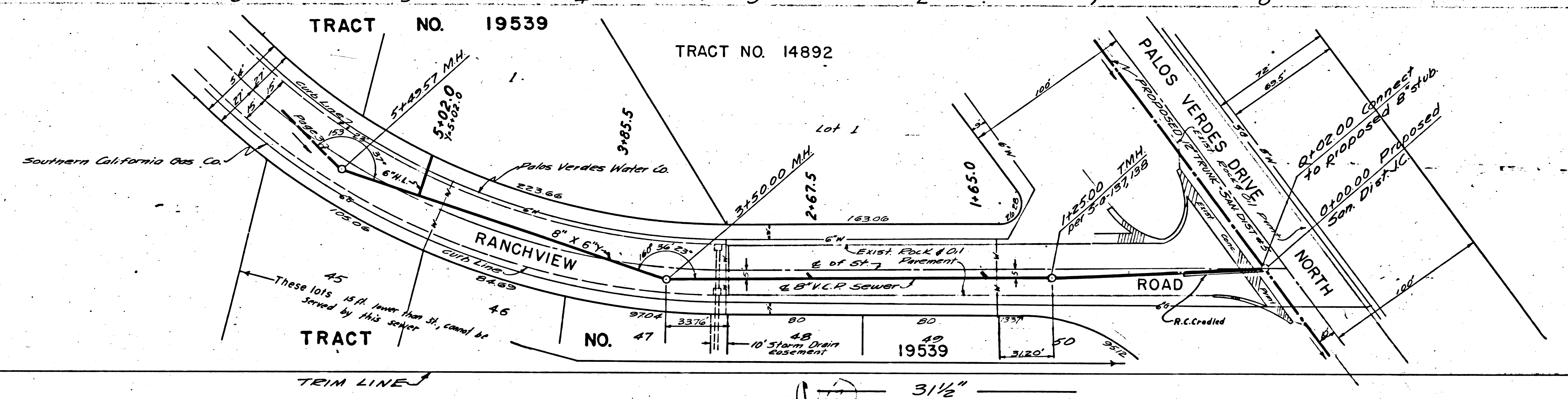
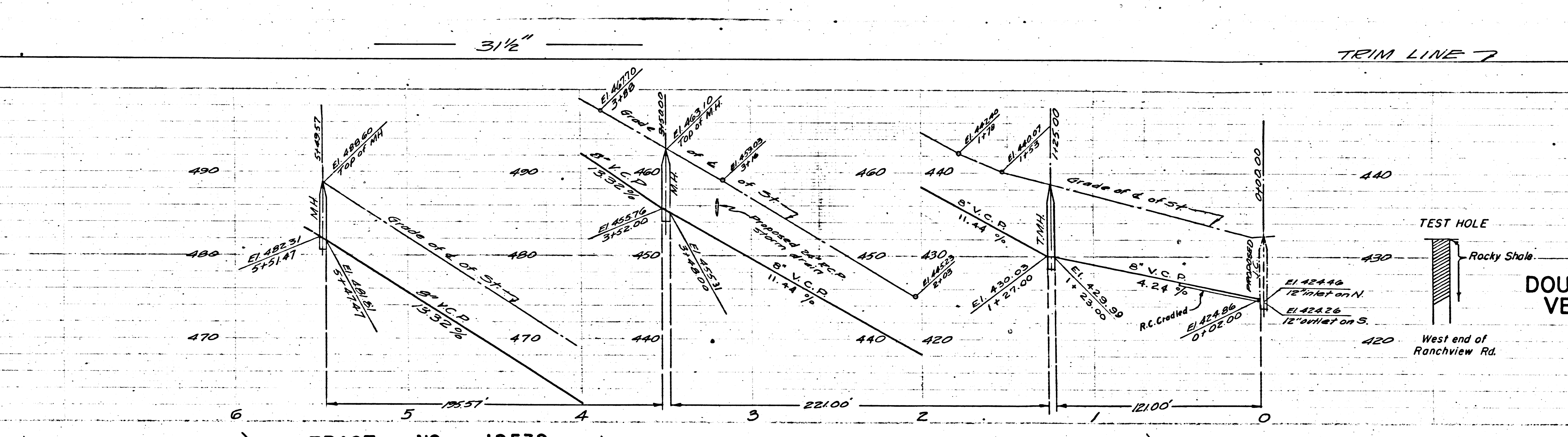
TRIM LINE 7

PC. 3396
PAGE 2

NO CHARGE
FOR CONNECTIONS

DOUBLE SCALE
VERTICALLY

20,469



TRIM LINE 7

3 1/2"

PG. 3396

PAGE 4

NO CHARGE FOR CONNECTIONS

Rocky Shale

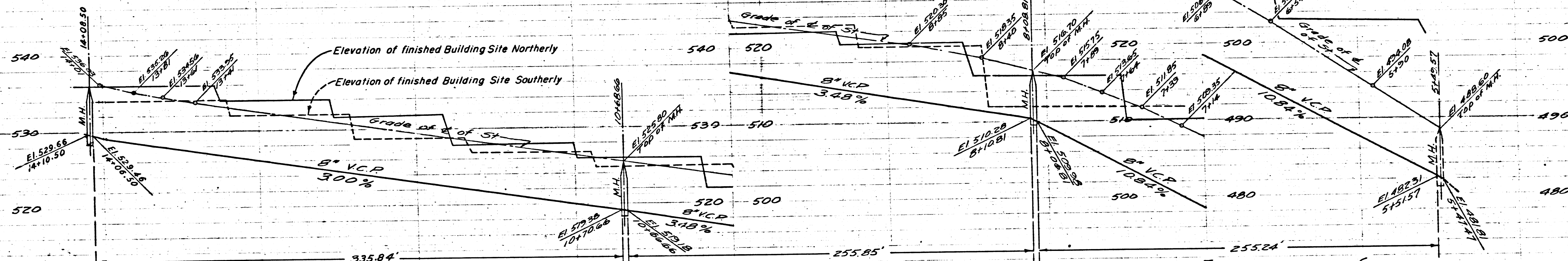
LOT 12

DOUBLE SCALE VERTICALLY

20,471

TRIM LINE

3 1/2"



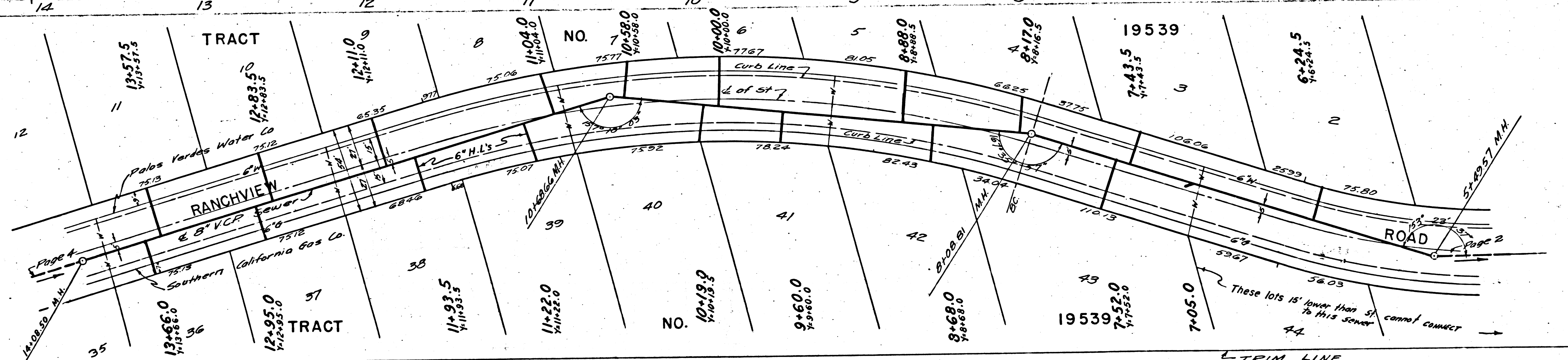
PG. 3396

PAGE 3

NO CHARGE FOR CONNECTIONS

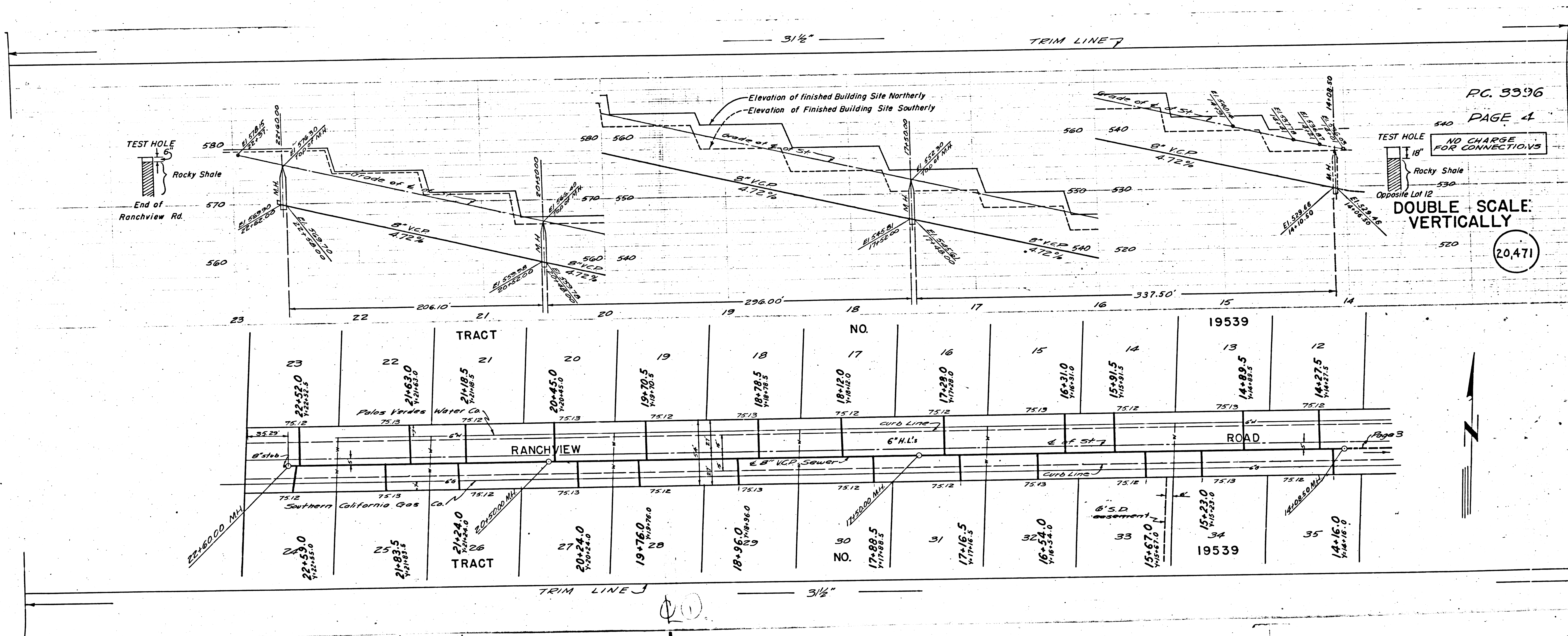
DOUBLE SCALE VERTICALLY

20,470



3 1/2"

TRIM LINE



PC. 5396

PAGE 4

NO CHARGE FOR CONNECTIONS

DOUBLE SCALE VERTICALLY

20,471

TRACT		TRACT NO.												TRACT	
23	22	21	20	19	18	17	16	15	14	13	12	11	10	9	8
22+52.0 7/16+52.0	21+63.0 7/16+63.0	21+18.5 7/16+18.5	20+45.0 7/16+45.0	19+78.5 7/16+78.5	18+78.5 7/16+78.5	18+12.0 7/16+12.0	17+29.0 7/16+29.0	16+31.0 7/16+31.0	15+91.5 7/16+91.5	14+89.5 7/16+89.5	14+27.5 7/16+27.5	13+15.0 7/16+15.0	12+15.0 7/16+15.0	11+15.0 7/16+15.0	10+15.0 7/16+15.0
22+53.0 7/16+53.0	21+83.5 7/16+83.5	21+24.0 7/16+24.0	20+24.0 7/16+24.0	19+76.0 7/16+76.0	18+96.0 7/16+96.0	17+88.5 7/16+88.5	17+16.5 7/16+16.5	16+54.0 7/16+54.0	15+67.0 7/16+67.0	15+23.0 7/16+23.0	14+15.0 7/16+15.0	13+15.0 7/16+15.0	12+15.0 7/16+15.0	11+15.0 7/16+15.0	10+15.0 7/16+15.0

TRIM LINE 3 1/2"