

NOTE: SAN DIMAS BLDG DIST. NO. 10

Provide stakes on the property lines or property lines produced at right angles to the sewer line at the center line of each manhole.

No representative of the County Engineer will survey or layout any portion of the work.

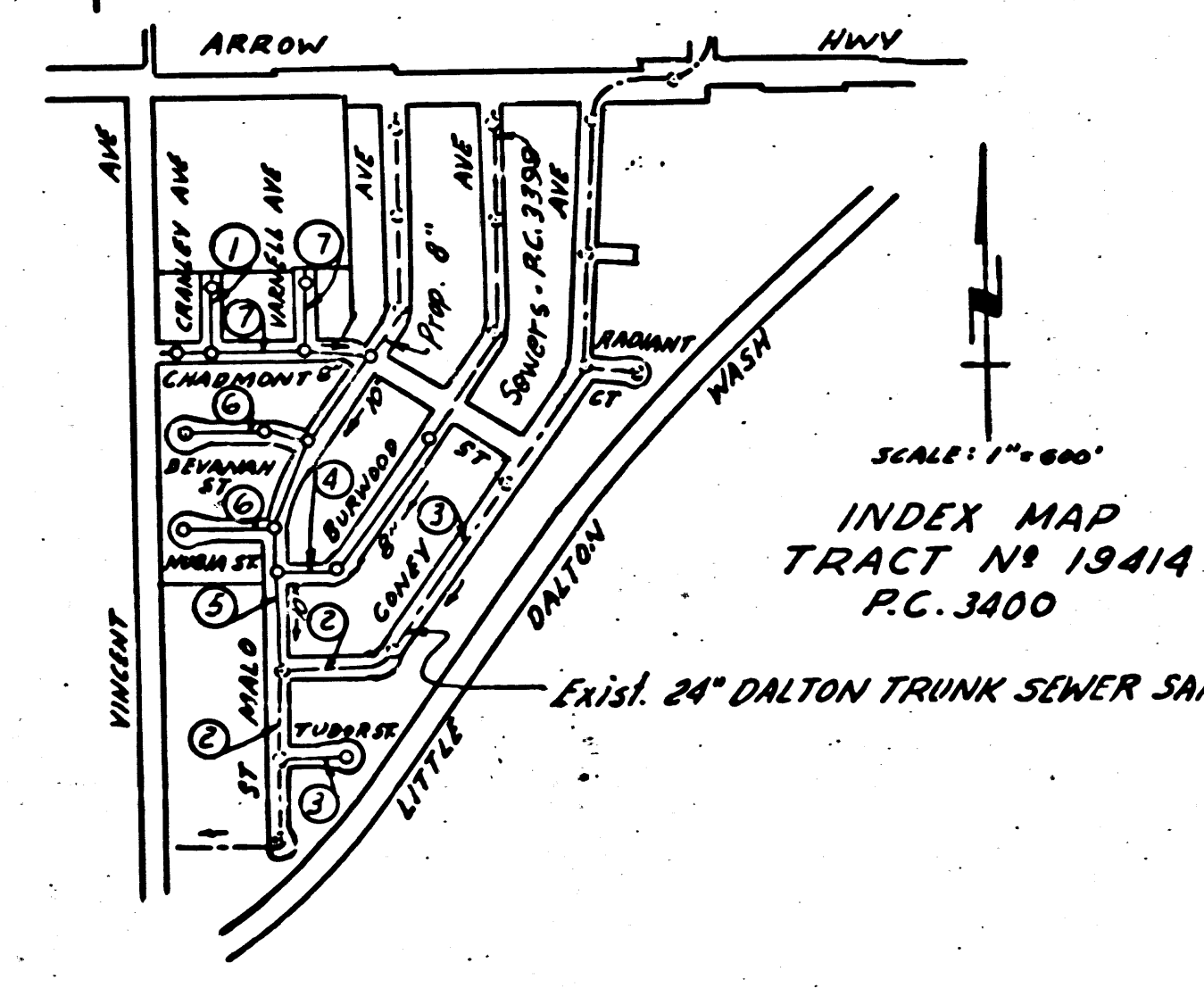
The owner or his authorized representative shall furnish the County Engineer with grade sheets and stations for all house laterals and Y branches and shall provide stakes for them at their proper locations with stationing plainly marked. Any change in location shall be requested in writing by the owner or his representative.

No revisions shall be made in these plans without the approval of the County Engineer.

1. Use standard manhole frames and covers, S-a-117.
2. Use standard strength pipe.
3. Use cement mortar for all vitrified clay pipe joints.
4. Resurface all trench within paved area to meet L.A. County Road Dept. or California State Highway Dept. requirements in accordance with permit.
5. Encase four feet of sewer at points of interference with poles, S-a-119.
6. House laterals to be constructed with inverts at property line 6 feet below curb grade except as noted.
7. All structures shall be brick sewer structures, S-a-104.
8. For allowable leakage test, use Formula No. 1, Spec's., Sec. 51.

Manhole tops in unimproved Rights-Of-Way to be 6\"/>

B.M. 56 230 El. 477.768 Lead & Tack 2' N. of E.C.R. @ N.E. Corner Arrow Hwy. & Citybank



NO CHARGE FOR CONNECTIONS

Before breaking into any existing structure and before final acceptance of this work, County Sanitation District should be notified in order that required inspection may be made.

PROFILE, ALIGNMENT AND GRADE OF
SANITARY SEWERS
TO BE CONSTRUCTED IN
TRACT NO. 19414

PRIVATE CONTRACT NO. 3400
W. S. 47
TWO SHEETS
Scale: VERT. 1"=40' HORIZ. 1"=40' FEB 1955
PREPARED IN THE OFFICES OF
BARCLAY SURVEYING CO.

FOR LEGEND SEE PLAN NO. S-a-64

NOTE:

Grades to which this improvement is to be constructed are shown on plans and profiles. Grade points for top of curbs, center line of streets, or center line of alleys are shown by circles on profiles. At all points between designated points the grade shall be established so as to conform to a straight line drawn between said designated points.

Elevations are in feet above U.S.C.S. datum or mean sea level.

This drawing and the data hereon are hereby made a part of the specifications.

Work shall be constructed according to specifications on file in the office of the County Engineer and shall be inspected only in the presence of the County Engineer.

Before work can be started, the contractor must obtain a permit to excavate in County streets from the L.A. County Road Dept., 108 W. 2nd St. and make a deposit with the County Engineer, Room 324, 259 South Broadway, sufficient to cover the cost of construction inspection and record plans.

Approval of this plan by the County of Los Angeles does not constitute a representation as to the accuracy of the location of or the existence or non-existence of any underground utility, pipe, or structure within the limits of this project. This note applies to all sheets.

If work is to be done in a State Highway, a permit must be obtained from the State of California, Division of Highways, 120 South Spring Street.

COUNTY OF LOS ANGELES, CALIFORNIA

Approved, William J. Fox, County Engineer
Approved, A. M. Rawm
CHIEF ENGR. CO. SAN. DIST. NO. 22
By *A. P. Collins* Sanitation Engineer
By *J. Posthumus* Office Engineer
Checked by *Ret. [Signature]* 4-12-55
Office of County Engineer, Reg. C. E. No. 7862

dated 8-30-55 *[Signature]*

PC. 3400
Page 1

21,188

TRACT NO. 19414

PC. 3400

Trim Line

A RC. 3400
Page 3

21,190

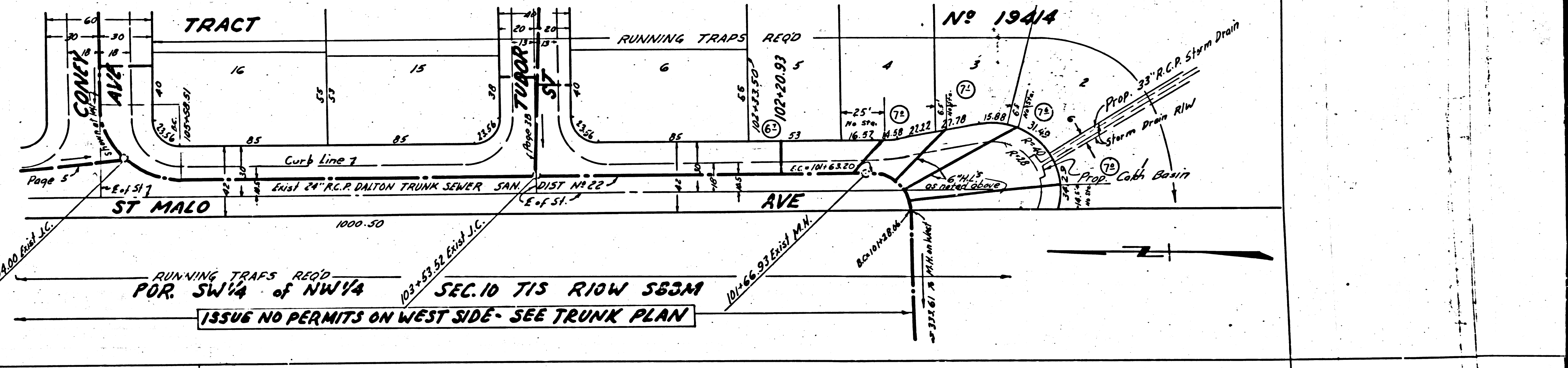
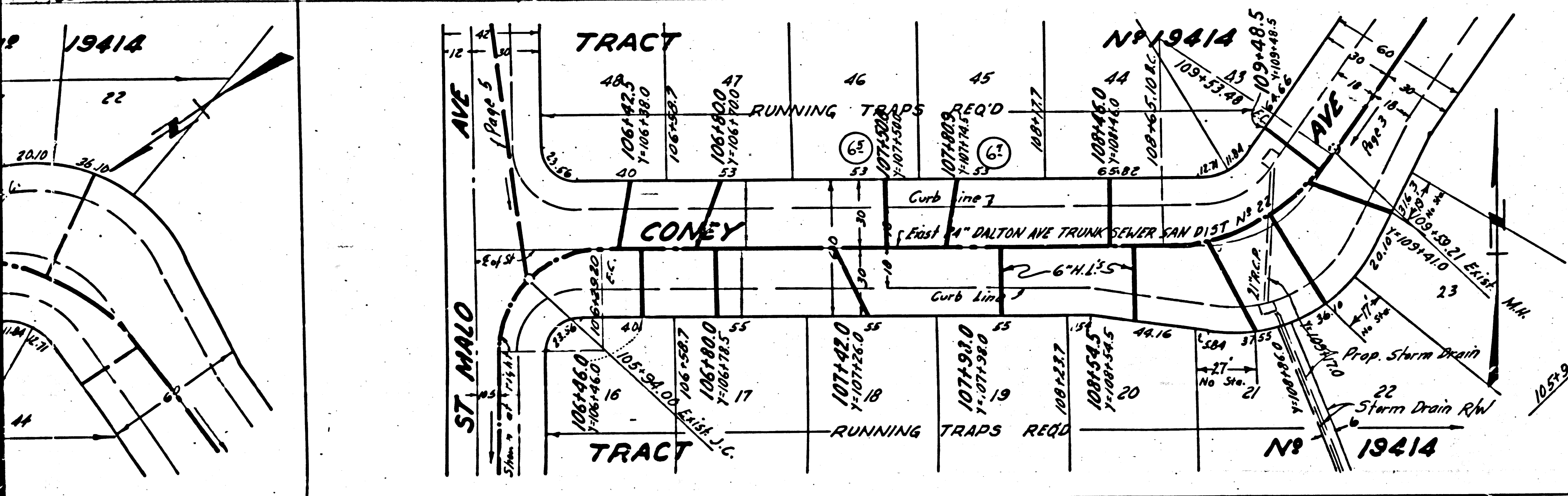
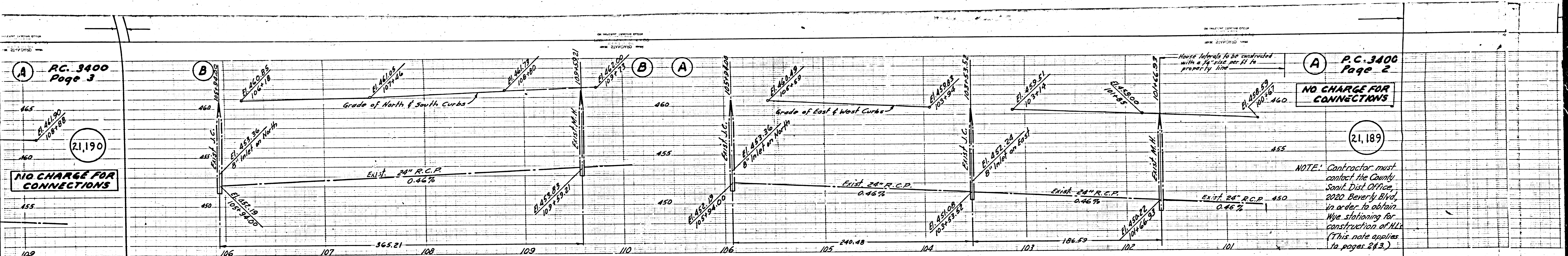
NO CHARGE FOR CONNECTIONS

A P.C. 3400
Page 2

21,189

NO CHARGE FOR CONNECTIONS

NOTE: Contractor must contact the County Sanit. Dist. Office, 2020 Beverly Blvd, in order to obtain Wye stationing for construction of ALL (This note applies to pages 2 & 3.)



ST MALO AVE

CONEY AVE

TRUNK SEWER

Prop. Storm Drain

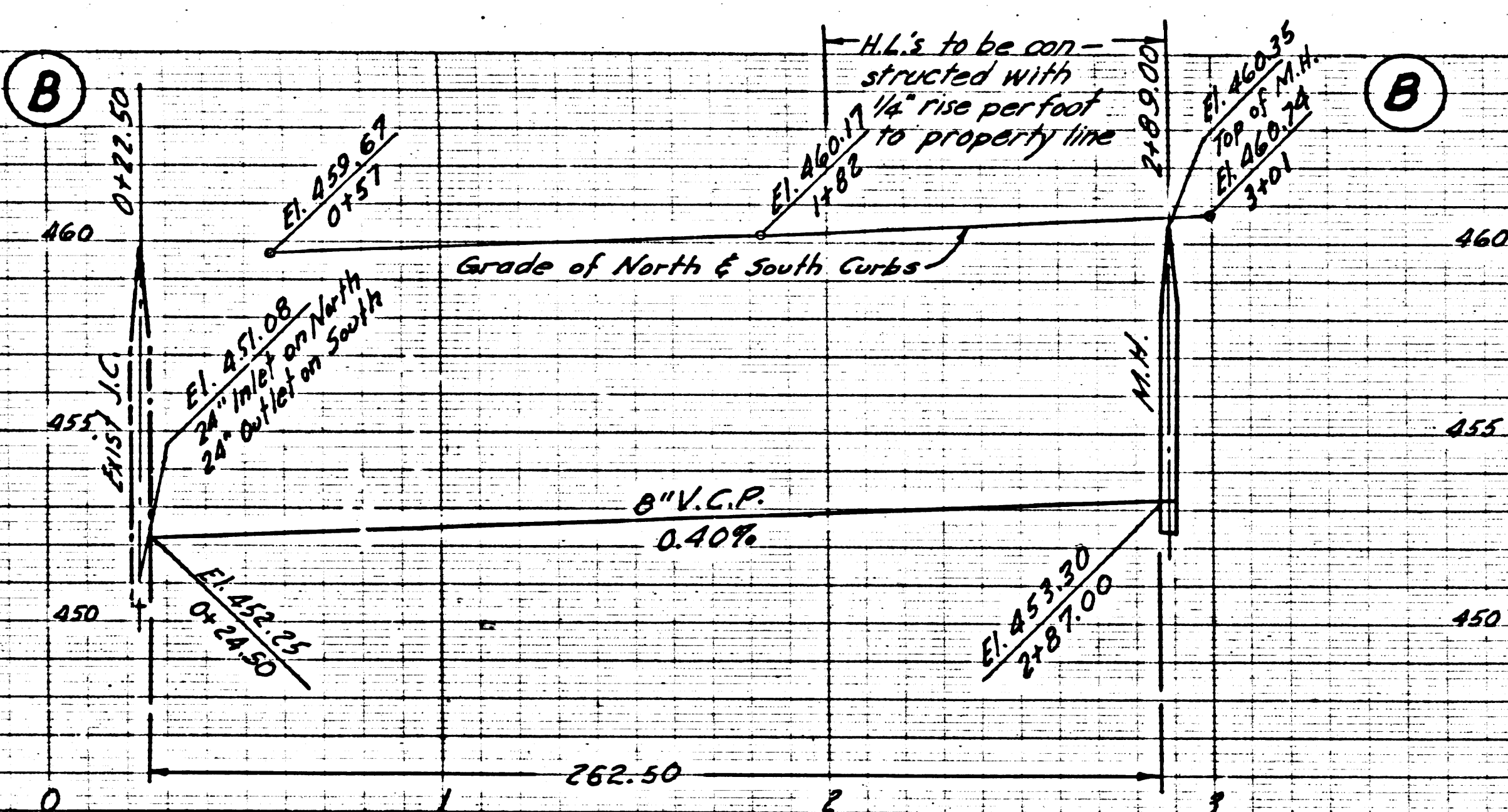
Prop. Catch Basin

Prop. 36\"/>

P.C. 3400
Page 4

NO CHARGE FOR
CONNECTIONS

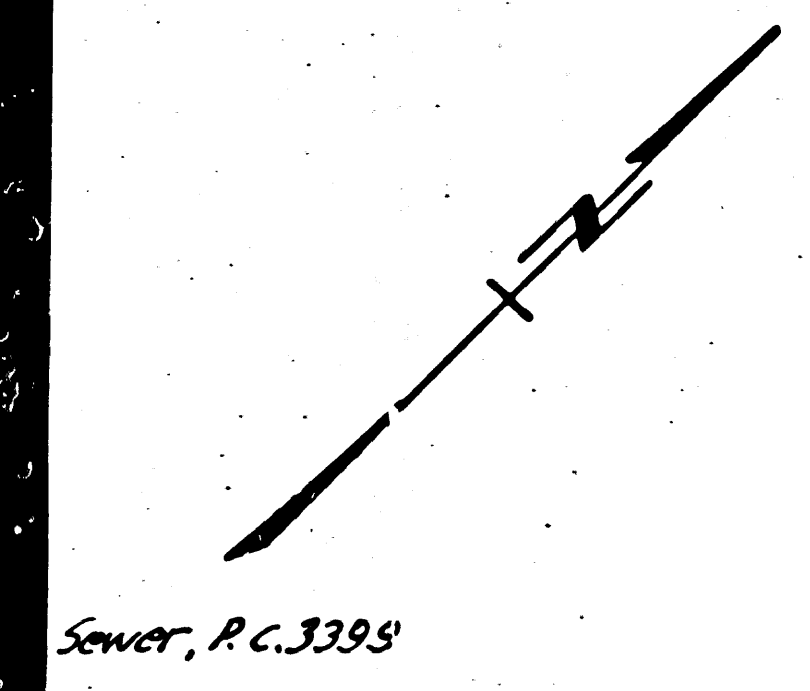
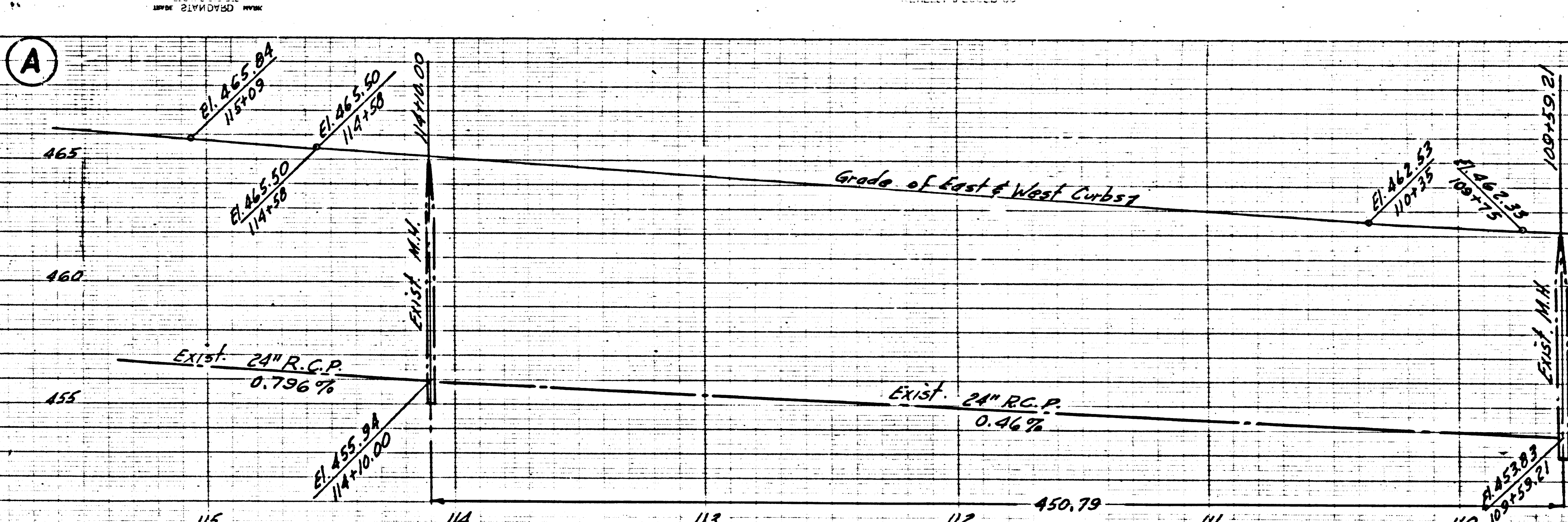
21,191



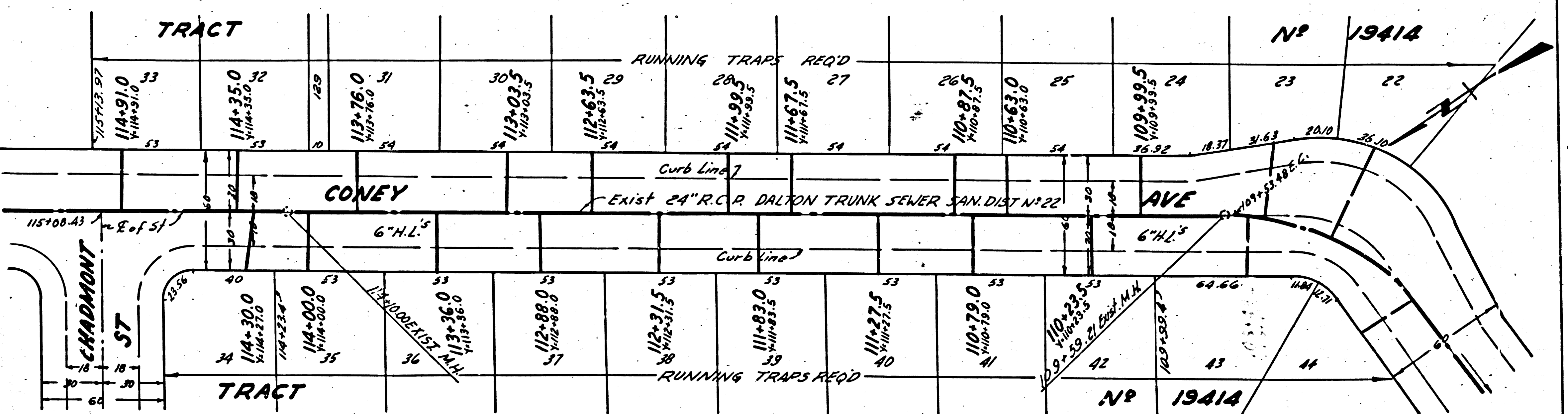
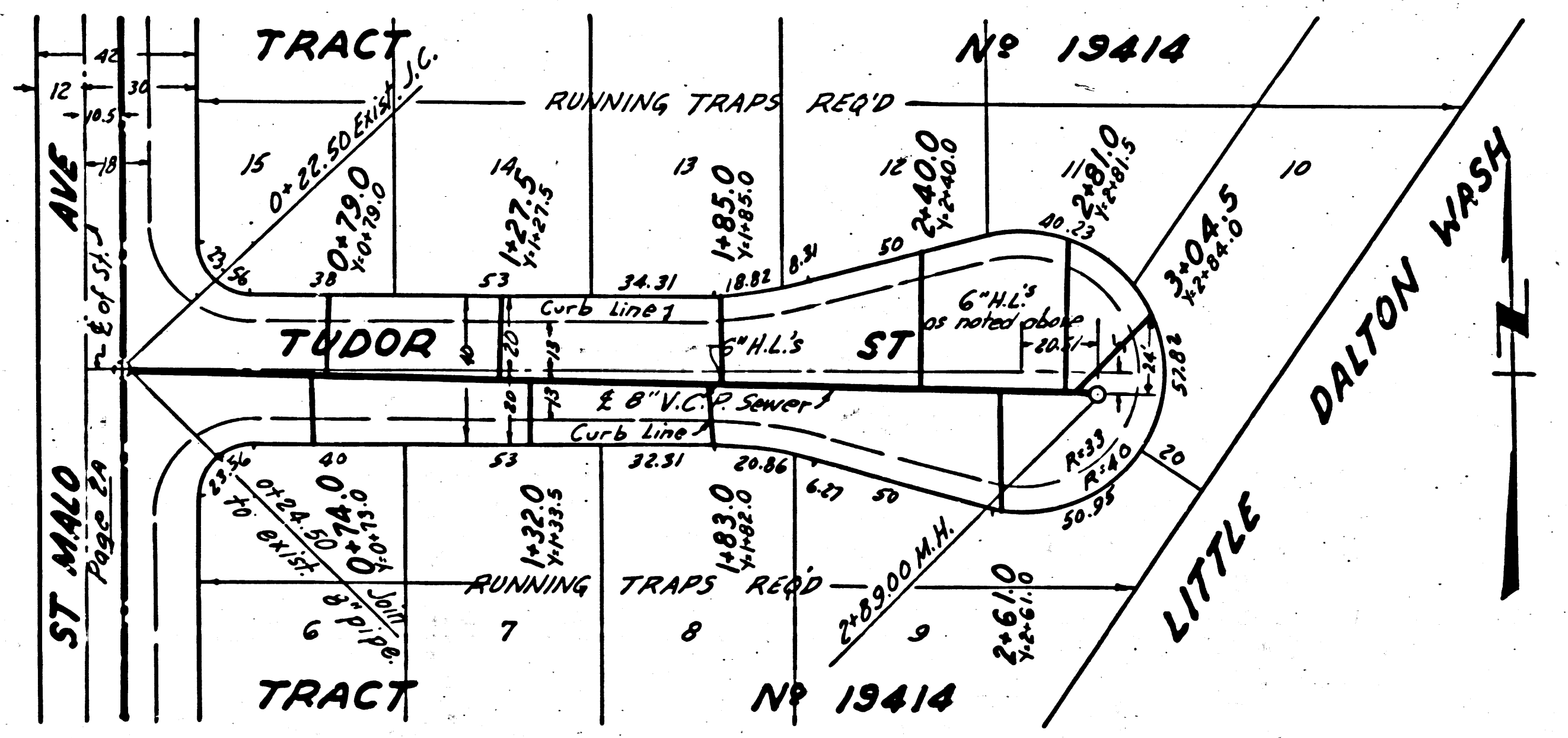
P.C. 3470
Page 3

NO CHARGE FOR
CONNECTIONS

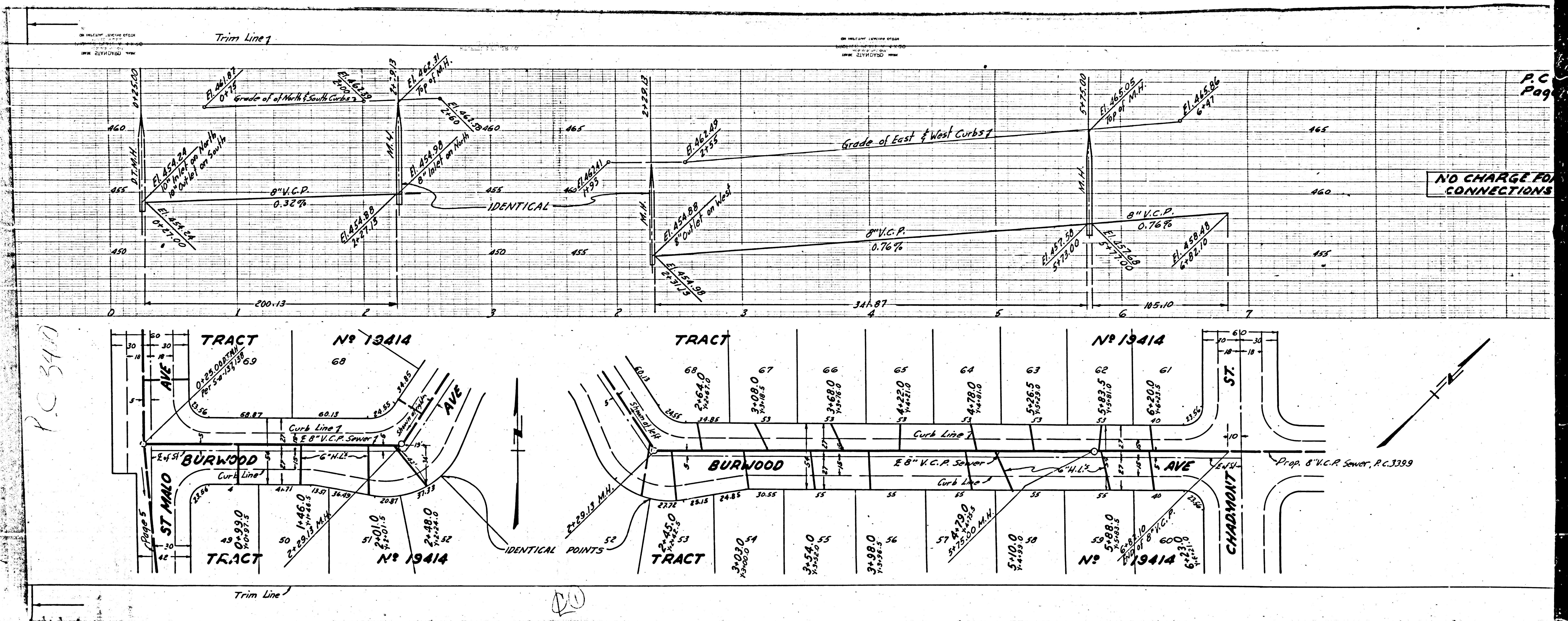
21,190



Sewer, P.C. 3398



21



P.C.
Page

NO CHARGE FOR CONNECTIONS

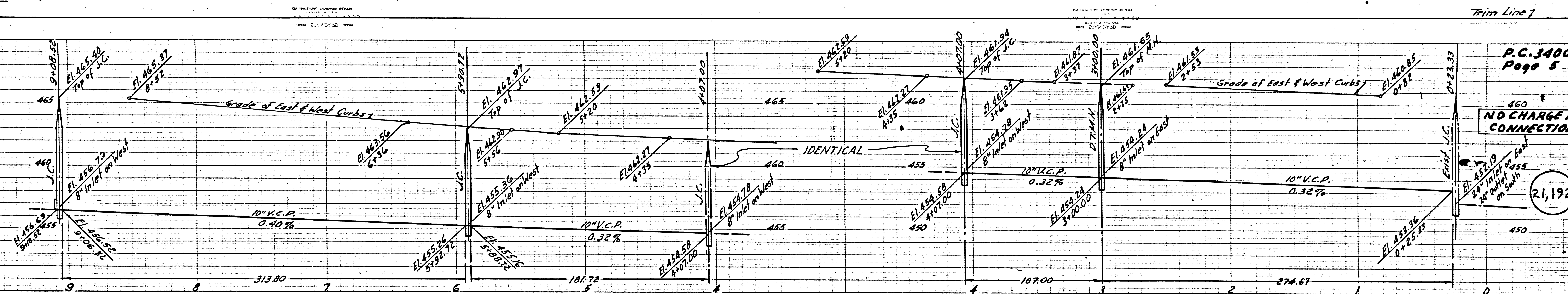
P.C. 340

DU

P.C. 3400
Page 6

21,193

NO CHARGE FOR
CONNECTIONS



Trim Line 1

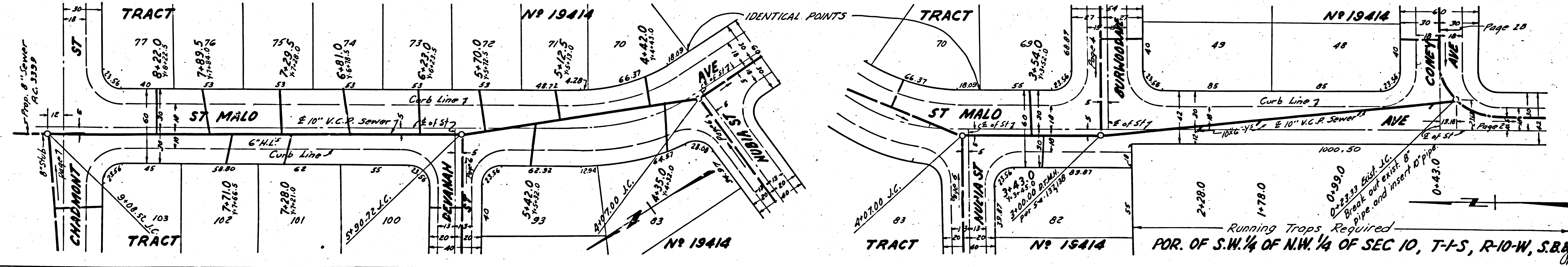
P.C. 3400
Page 5

NO CHARGE FOR
CONNECTIONS

21,192

TRACT No 19414

P.C. 3400
004E.D.

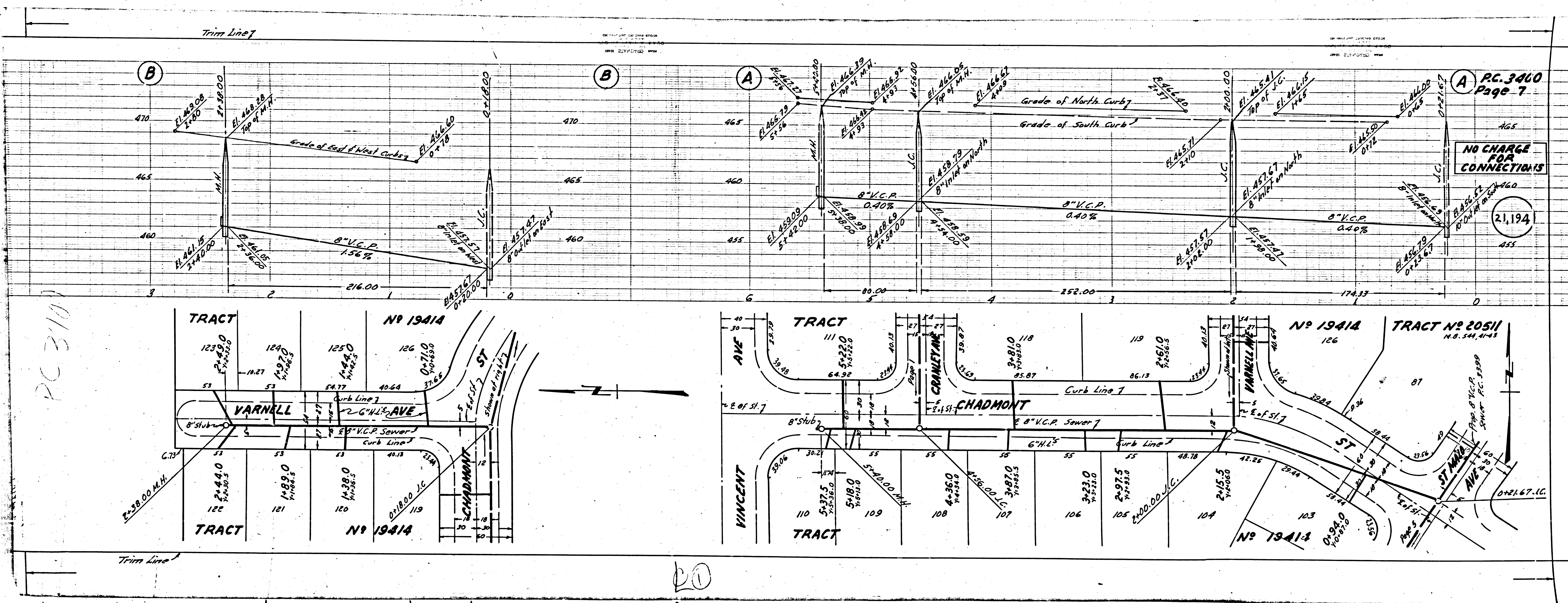


Page 28

Page 29

Running Traps Required
POR. OF S.W. 1/4 OF N.W. 1/4 OF SEC 10, T-1-S, R-10-W, S.B.M.
OK

Trim Line 2



PC 310

PC 3000
Page 7

NO CHARGE
FOR
CONNECTIONS

21,194

20