

P.C. 3401  
PAGE 2  
DOUBLE SCALE

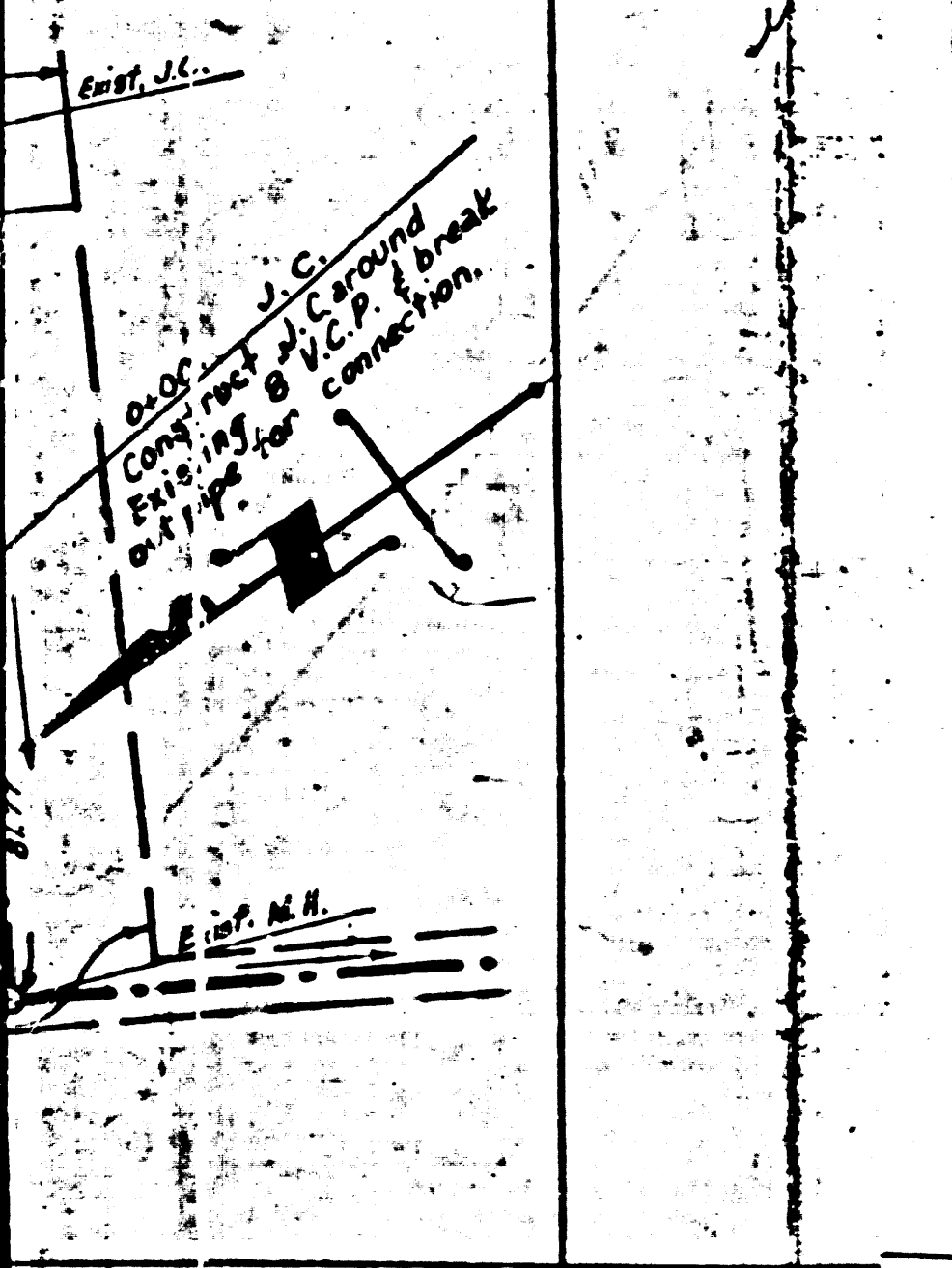
100

COLLECT CHARGES AS INDICATED

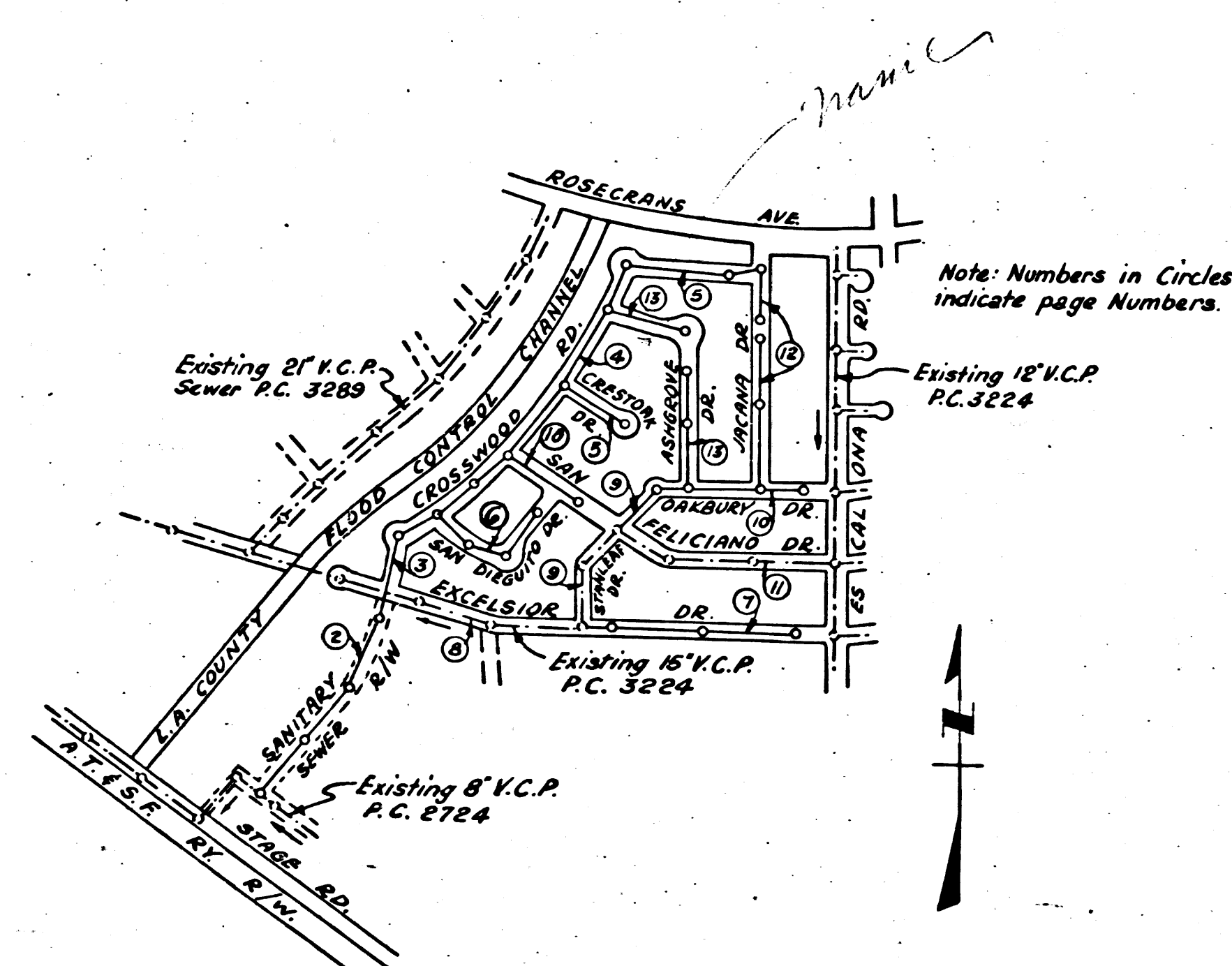
90

21,394

80



Bench Mark: B.M. 3-2 Std. Co. Surv. Mon. marked 88182 set in conc. 16" below surface on apron of Luitwiler Ave. 72' 2" N. of E. of Stage Ed. in well protected by cast iron cover, per C.S.F.B. 1204-6 L.A. Co. 1952. Adj. El. = 100.842



SHEET	PAGE
1	1-5
2	6-10
3	11-15

NOTE: LOTS 1, 30, & 52 THRU 64 HAVE EXISTING HOUSE LATERALS CONSTRUCTED UNDER R.C. 3224

Checked 10-26-55 W. Green

BELLFLOWER BLDG. DIST. No. 4

- NOTE:
- Provide stakes on the property lines or property lines produced at right angles to the sewer line at the center line of each manhole.
  - No representative of the County Engineer will survey or layout any portion of the work.
  - The owner or his authorized representative shall furnish the County Engineer with grade sheets and stations for all house laterals and Y branches and shall provide stakes for them at their proper locations with stationing plainly marked. Any change in location shall be requested in writing by the owner or his representative.
  - No revisions shall be made in these plans without the approval of the County Engineer.
  - Use standard manhole frames and covers, S-a-117.
  - Use standard strength pipe except as noted.
  - Use cement mortar for all vitrified clay pipe joints.
  - Resurface all trench within paved area to meet L.A. County Road Dept. or California State Highway Dept. requirements in accordance with permit.
  - Encase four feet of sewer at points of interference with poles, S-a-119.
  - House laterals to be constructed with inverts at property line 6 feet below curb grade except as noted.
  - All structures shall be brick sewer structures, S-a-104.
  - For allowable leakage test, use Formula No. 1, Spec's., Sec. 51.
  - Manhole tops in unimproved Rights-of-Way to be 6" above finish grade.
  - The Contractor shall satisfy himself of all substructures and shall be responsible for their location.

COLLECT CHARGES AS INDICATED

21,394 3-17-55

P.C. 3401  
PAGE 1  
DOUBLE SCALE

PROFILE, ALIGNMENT AND GRADE OF  
SANITARY SEWERS  
TO BE CONSTRUCTED IN  
TRACT No. 20553

21,393

PRIVATE CONTRACT NO. 3401  
W. S. 34  
3 SHEETS  
Scale: VERT. 1"=4'  
HORIZ. 1"=40'  
FEBRUARY 1955  
PREPARED IN THE OFFICES OF  
WM. H. FAIR, JR.

F. Quinn

Reg. C. E. No. 8582  
FOR LEGEND SEE PLAN NO. S-a-64

NOTE:

Grades to which this improvement is to be constructed are shown on plans and profiles. Grade points for top of curbs, center line of streets, or center line of alleys are shown by circles on profiles. At all points between designated points the grade shall be established so as to conform to a straight line drawn between said designated points.

Elevations are in feet above U.S.G.S. datum or mean sea level.

This drawing and the data hereon are hereby made a part of the specifications.

Work shall be constructed according to specifications on file in the office of the County Engineer and shall be prosecuted only in the presence of the County Engineer.

Before work can be started, the contractor must obtain a permit to excavate in County streets from the L.A. County Road Dept., 108 W. 2nd St. and make a deposit with the County Engineer, room 324, 253 South Broadway sufficient to cover the cost of construction inspection and record plans.

Approval of this plan by the County of Los Angeles does not constitute a representation as to the accuracy of the location of or the existence or non-existence of any underground utility, pipe, or structure within the limits of this project. This note applies to all sheets.

If work is to be done in a State Highway, a permit must be obtained from the State of California, Division of Highways, 120 South Spring Street.

COUNTY OF LOS ANGELES, CALIFORNIA

Approved, William J. Fox, County Engineer

Approved, A. M. Rawm  
CHIEF ENGR. CO. SAN. DIST. NO. 18

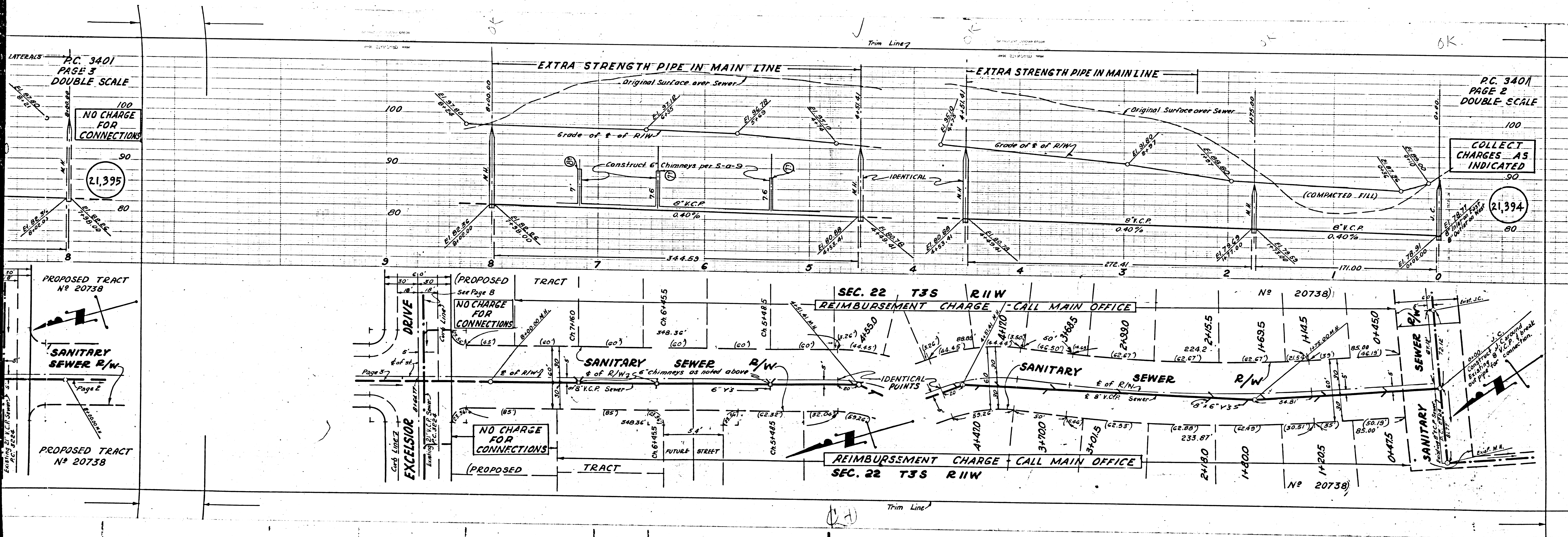
By: A. P. Collins  
Sanitation Engineer

By: J. C. Quinn  
Office Engineer

Checked by: R. P. T. 3-17-55  
Office of County Engineer, Reg. C. E. No. 7860

TRACT NO. 20553  
P.C. 3401





PC. 3401  
PAGE 3  
DOUBLE SCALE

NO CHARGE  
FOR  
CONNECTIONS

21,395

PC. 3401  
PAGE 2  
DOUBLE SCALE

COLLECT  
CHARGES AS  
INDICATED

21,394

PROPOSED TRACT  
No 20738

SANITARY  
SEWER R/W

PROPOSED TRACT  
No 20738

(PROPOSED)  
TRACT

NO CHARGE  
FOR  
CONNECTIONS

SANITARY  
SEWER R/W

NO CHARGE  
FOR  
CONNECTIONS

(PROPOSED)  
TRACT

SEC. 22 T3S R11W  
REIMBURSEMENT CHARGE - CALL MAIN OFFICE

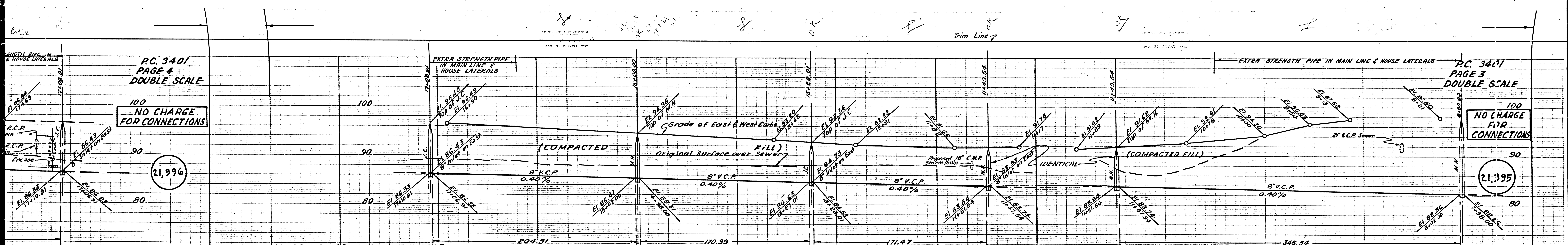
No 20738

SEC. 22 T3S R11W  
REIMBURSEMENT CHARGE - CALL MAIN OFFICE

No 20738

Trim Line





PC. 3401  
PAGE 4  
DOUBLE SCALE

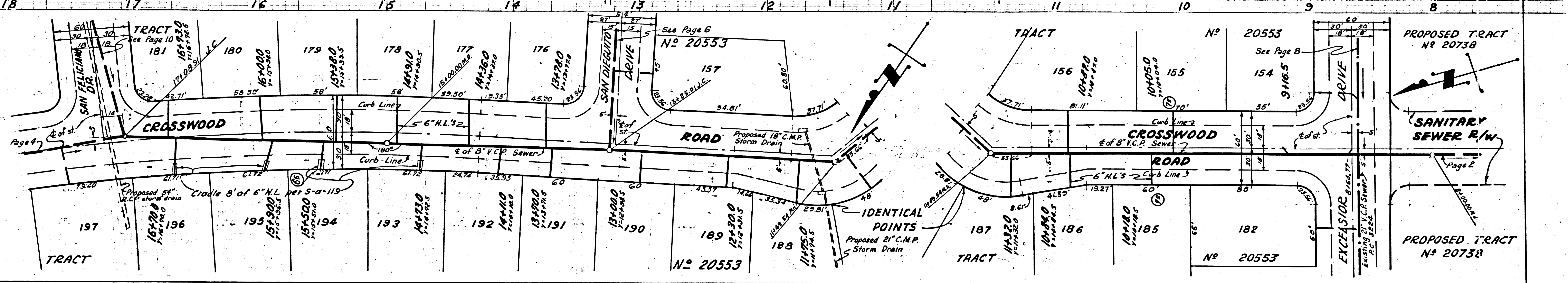
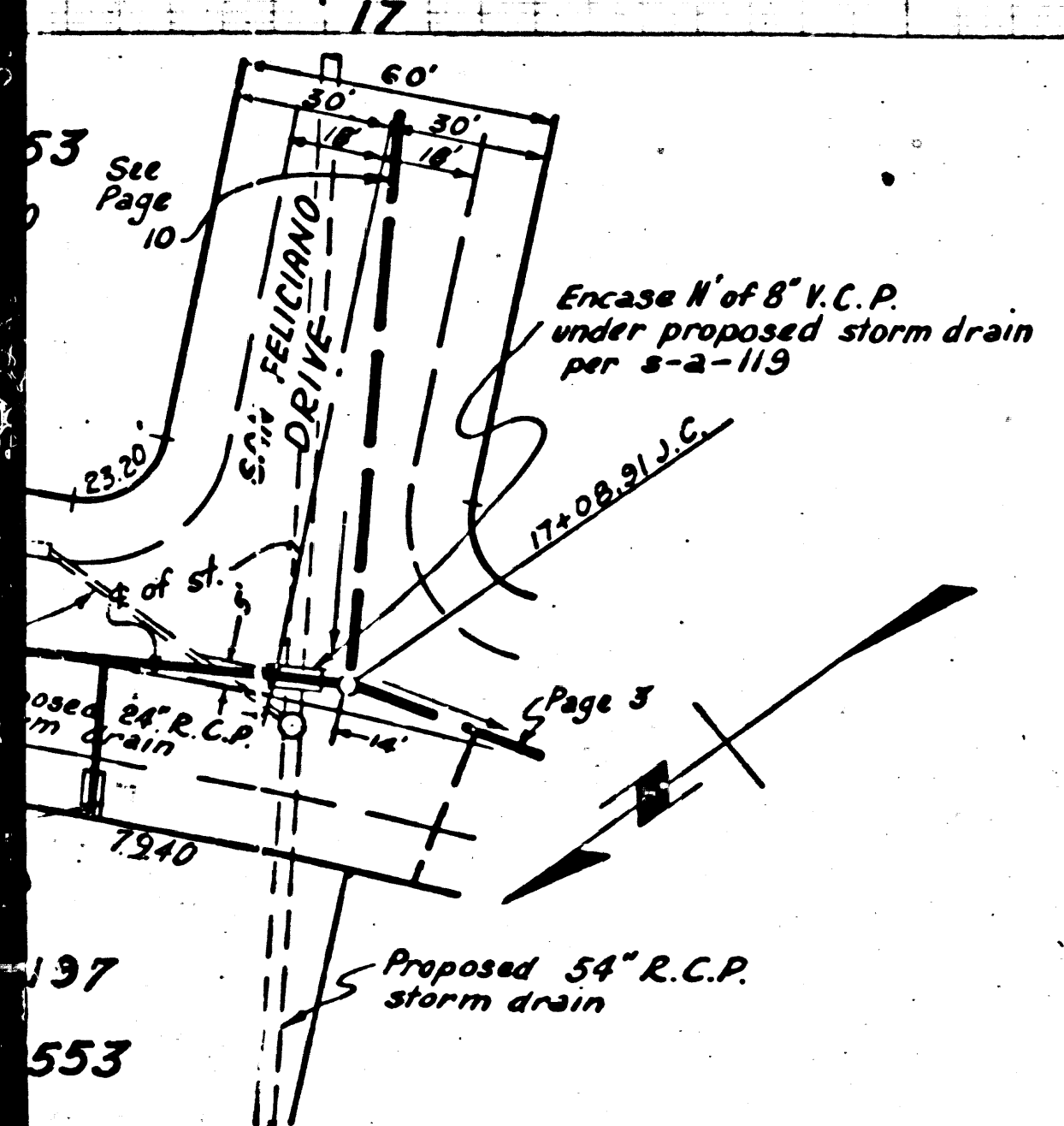
PC. 3401  
PAGE 3  
DOUBLE SCALE

100  
NO CHARGE  
FOR CONNECTIONS

100  
NO CHARGE  
FOR  
CONNECTIONS

21,396

21,395



SANITARY  
SEWER R/W

PROPOSED TRACT  
No 20738

PROPOSED TRACT  
No 20738

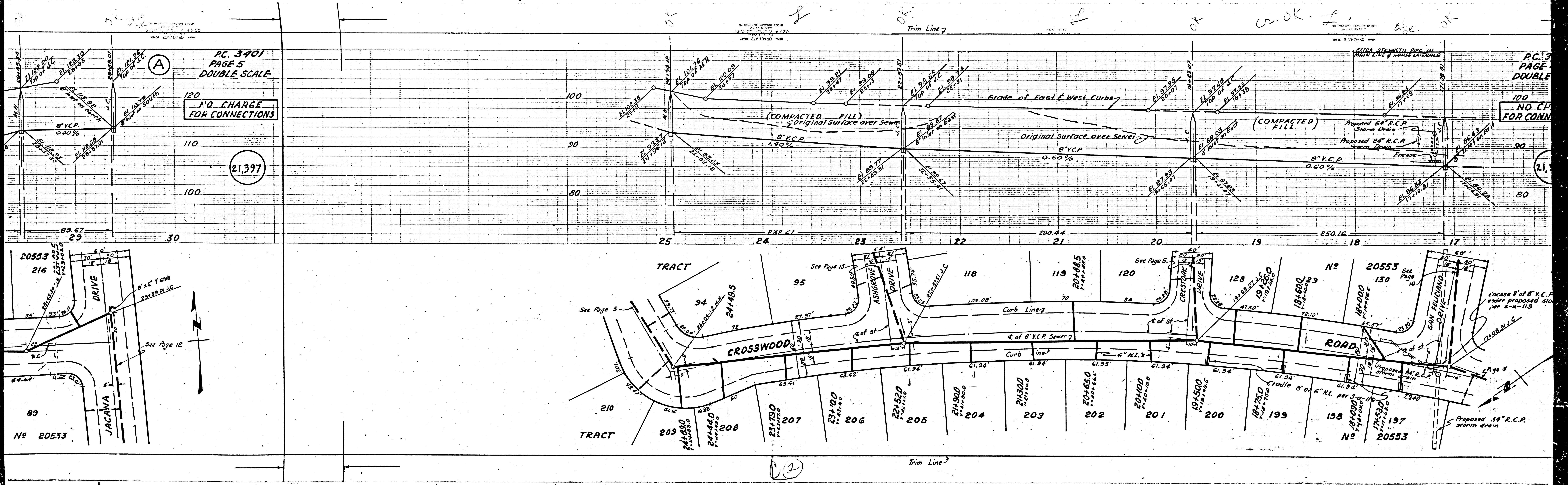
TRACT No 20553

TRACT No 20553

PROPOSED TRACT  
No 20738

Trim Line





PC. 3401  
PAGE 5  
DOUBLE SCALE

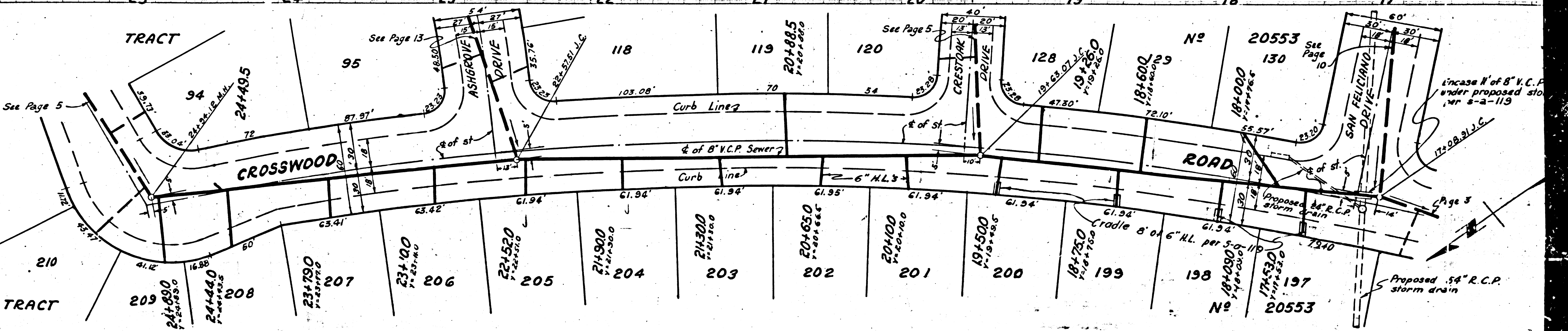
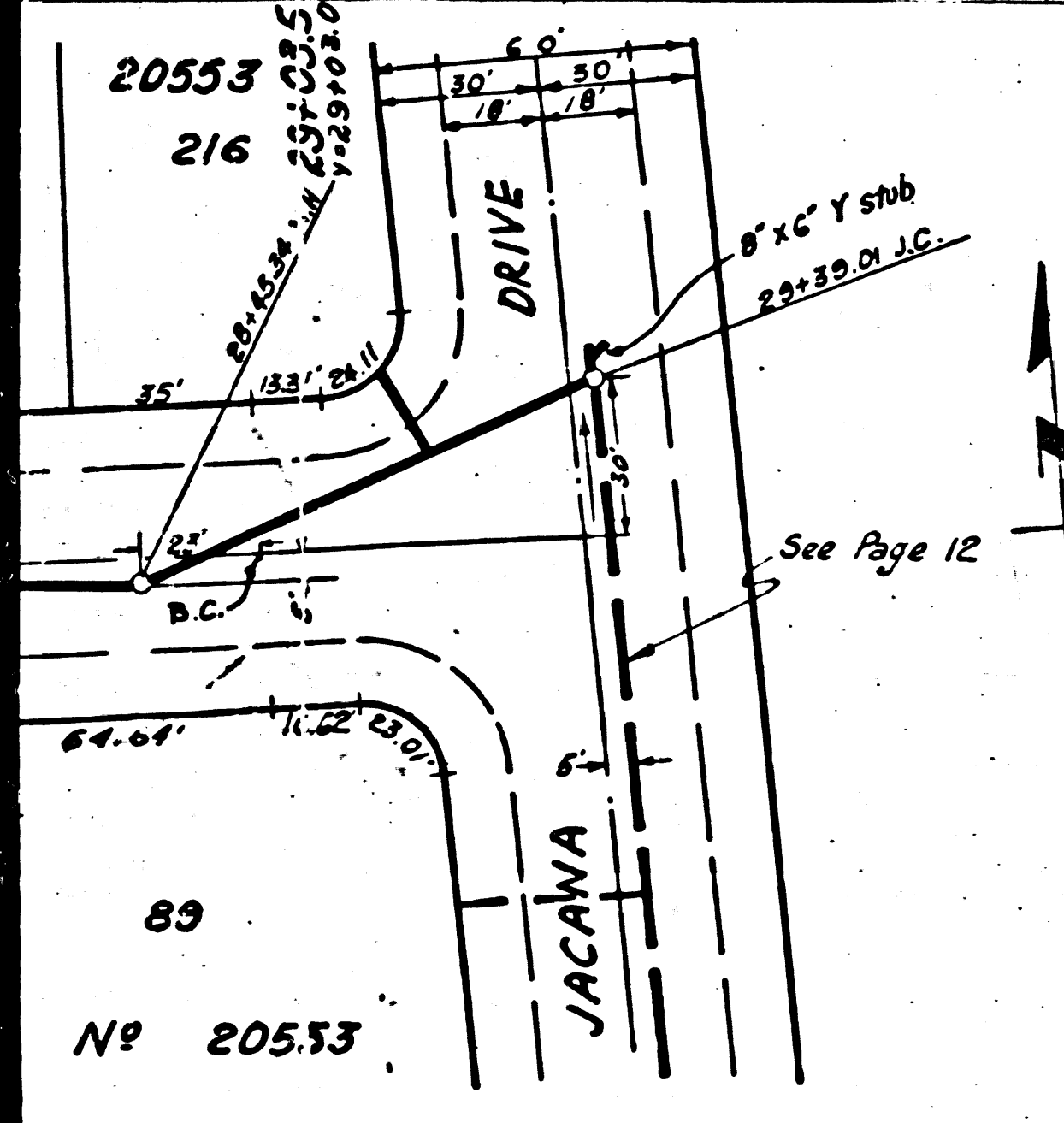
NO CHARGE  
FOR CONNECTIONS

21,397

PC. 3401  
PAGE 5  
DOUBLE SCALE

NO CHARGE  
FOR CONNECTIONS

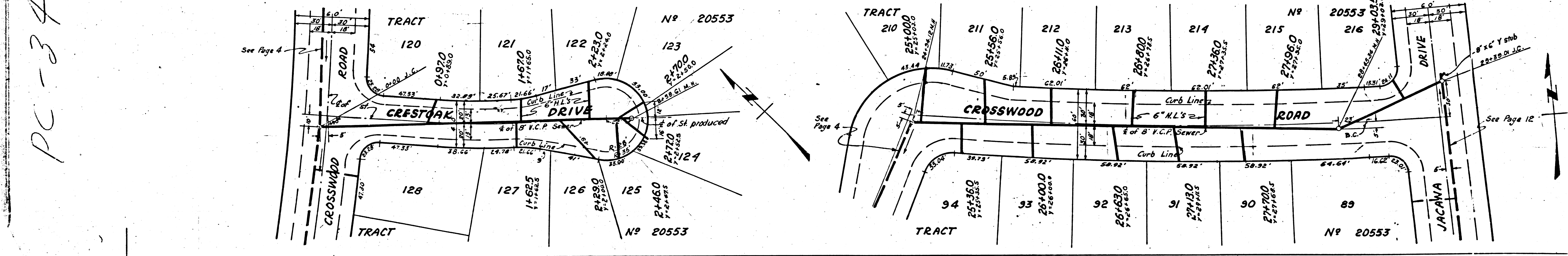
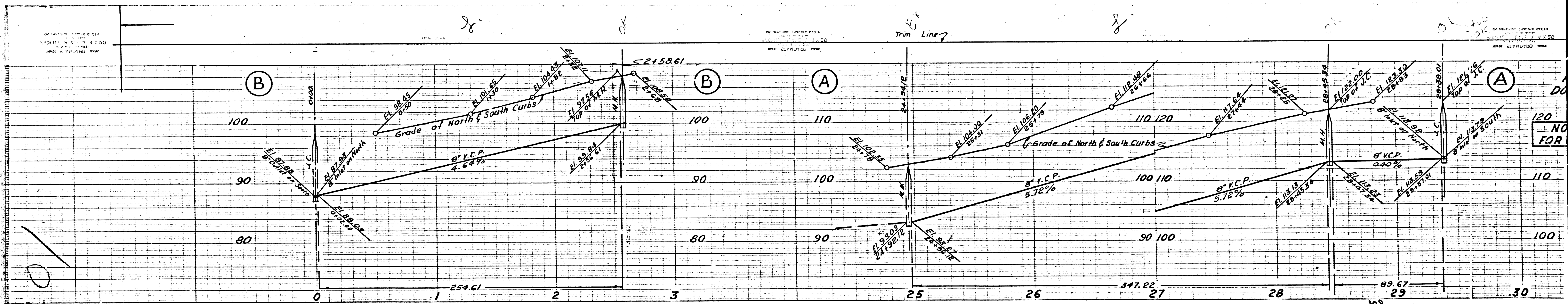
21,397



21,397

21,397





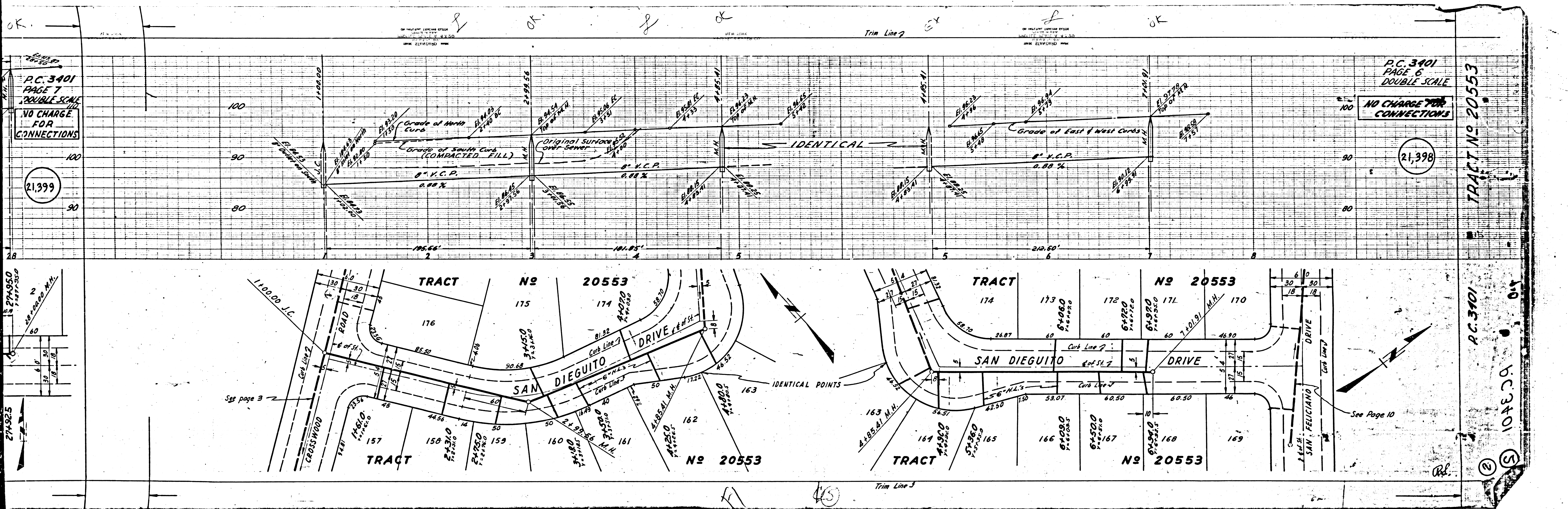
PC-340

NO FOR

See Page 12

Trim Line



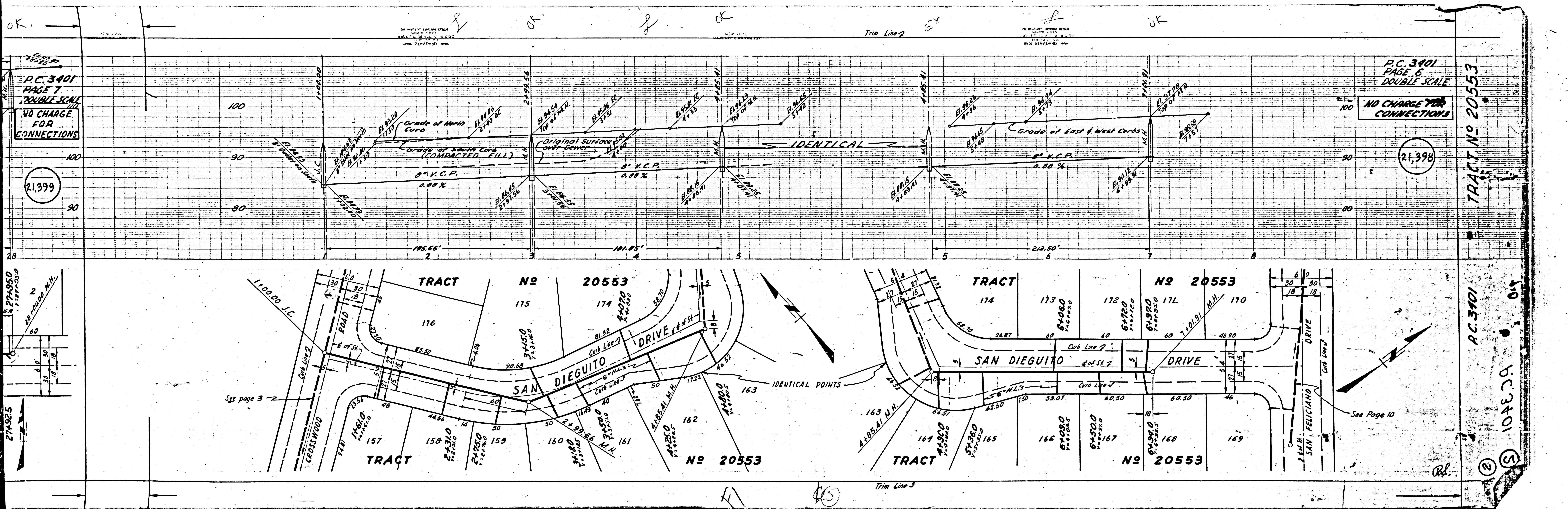


P.C. 3401  
PAGE 7  
DOUBLE SCALE  
NO CHARGE FOR CONNECTIONS  
21,399

P.C. 3401  
PAGE 6  
DOUBLE SCALE  
NO CHARGE FOR CONNECTIONS  
21,398

P.C. 3401  
TRACT NO. 20553  
P.C. 3401  
104E.20  
04

See Page 10



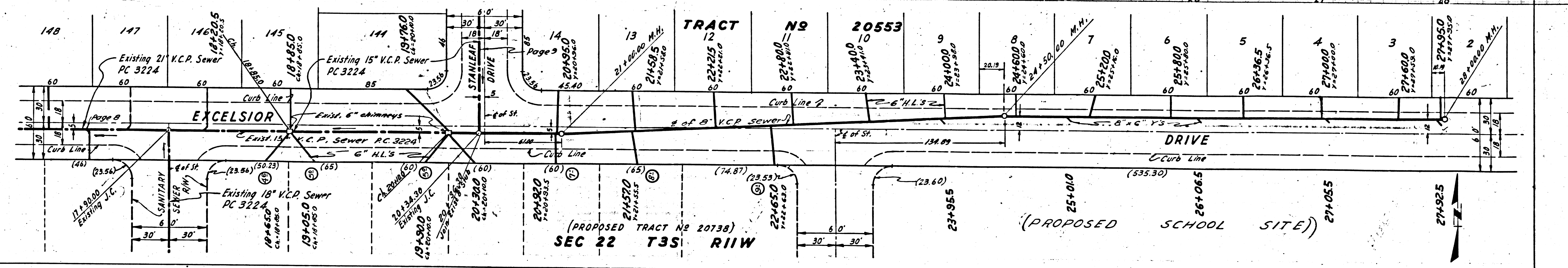
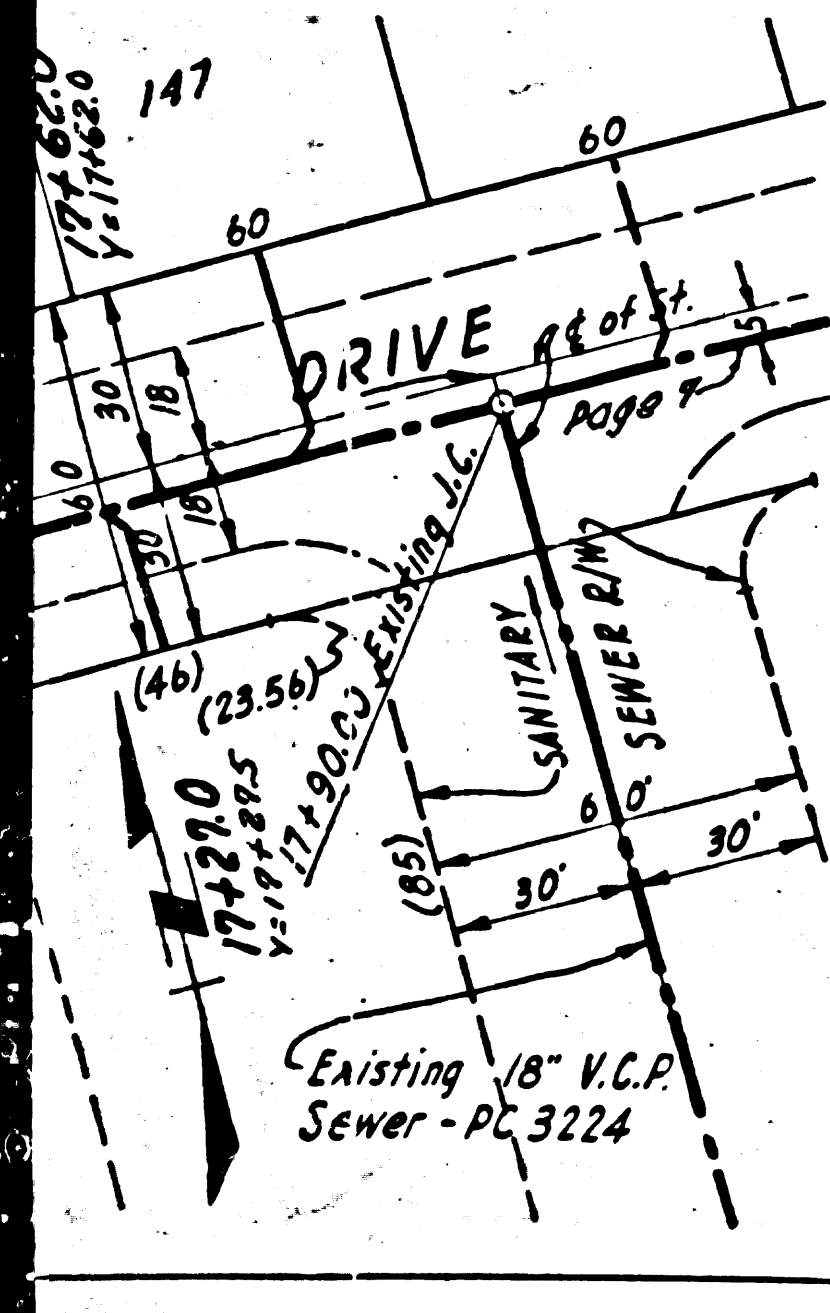
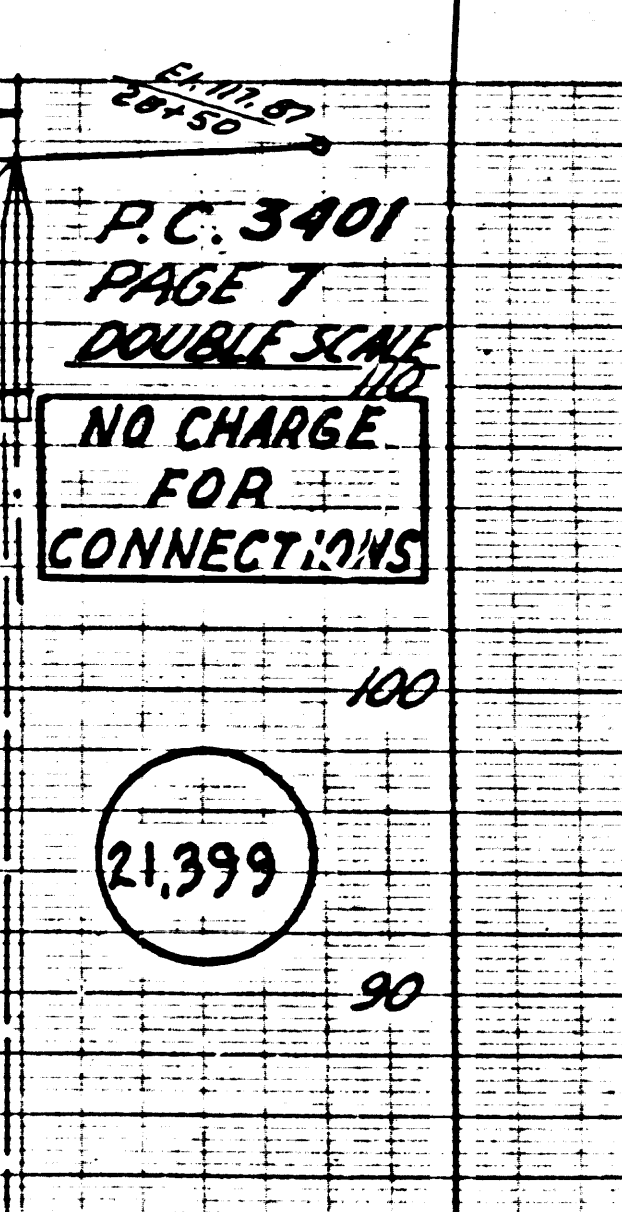
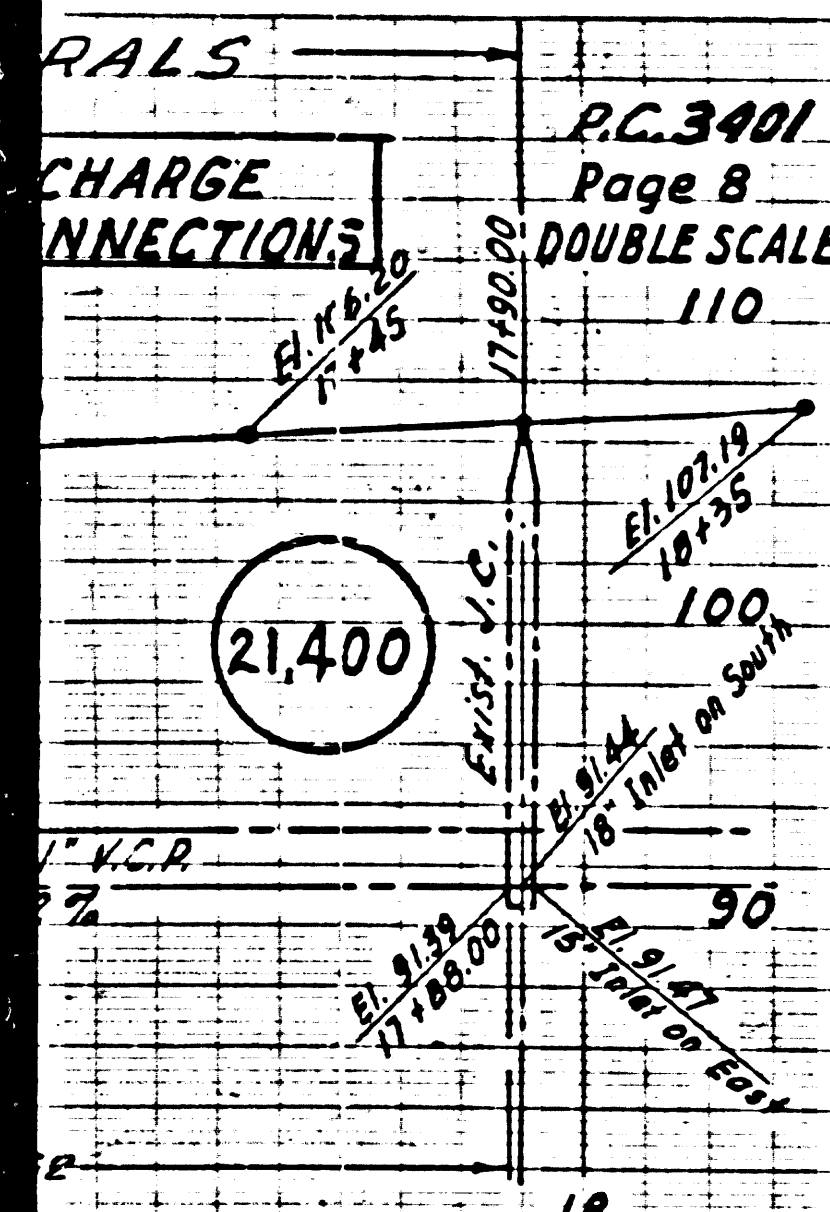
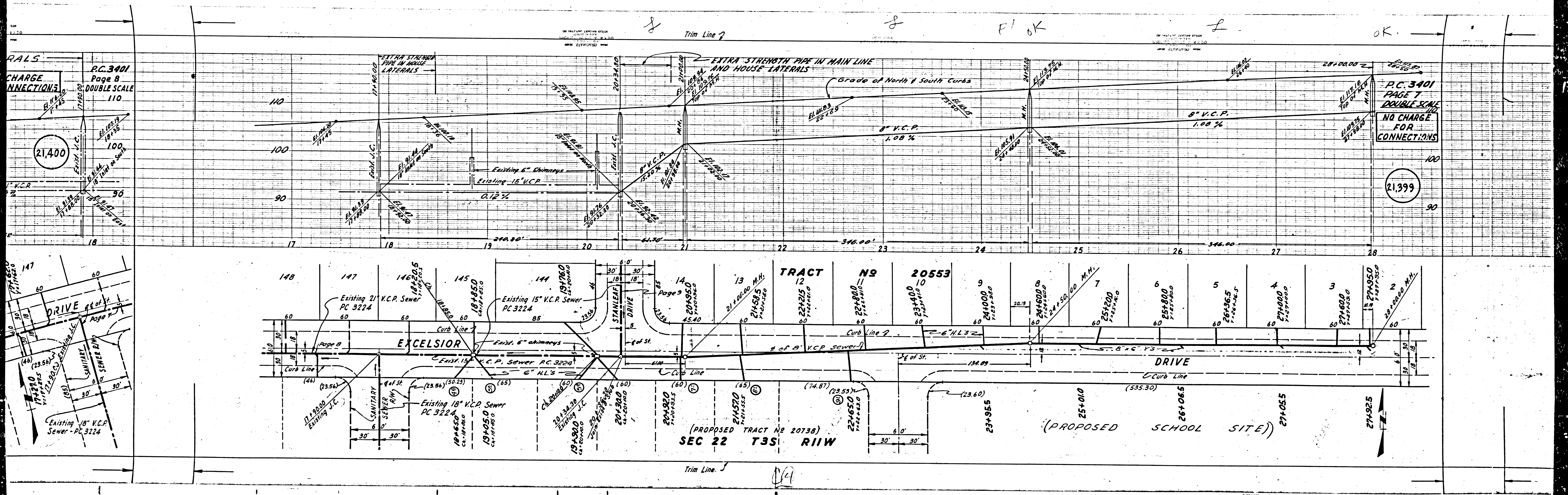
P.C. 3401  
PAGE 7  
DOUBLE SCALE  
NO CHARGE FOR CONNECTIONS  
21,399

P.C. 3401  
PAGE 6  
DOUBLE SCALE  
NO CHARGE FOR CONNECTIONS  
21,398

P.C. 3401  
TRACT NO. 20553  
P.C. 3401  
104E.20  
04

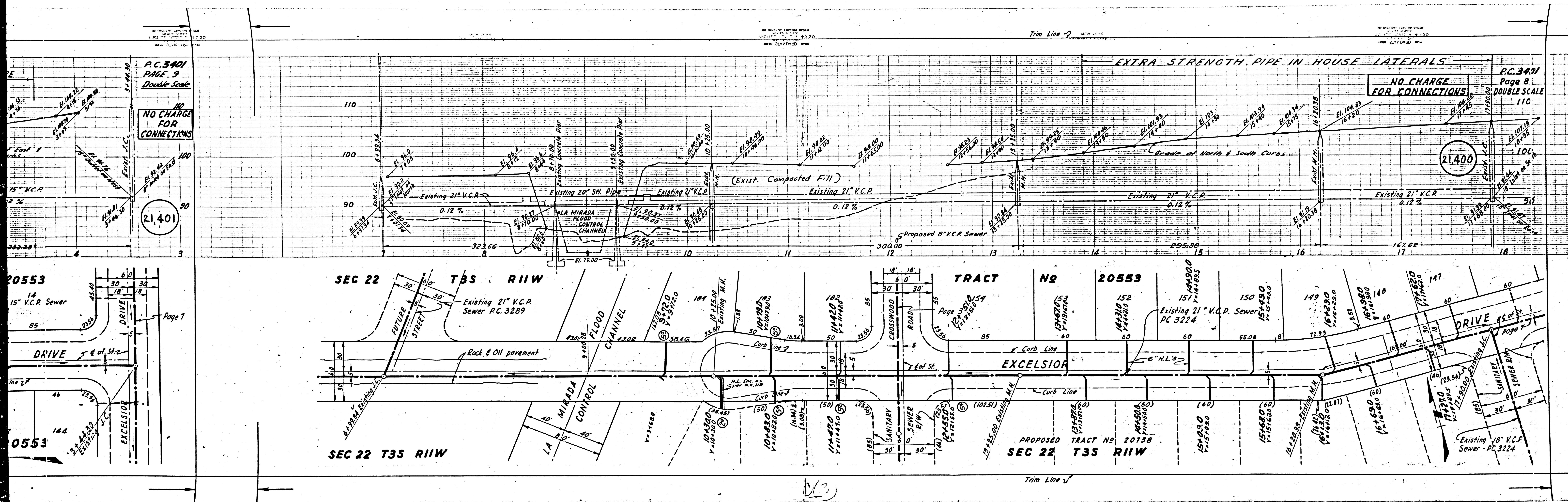
See Page 10





14





P.C. 3401  
PAGE 9  
Double Scale  
NO CHARGE FOR CONNECTIONS

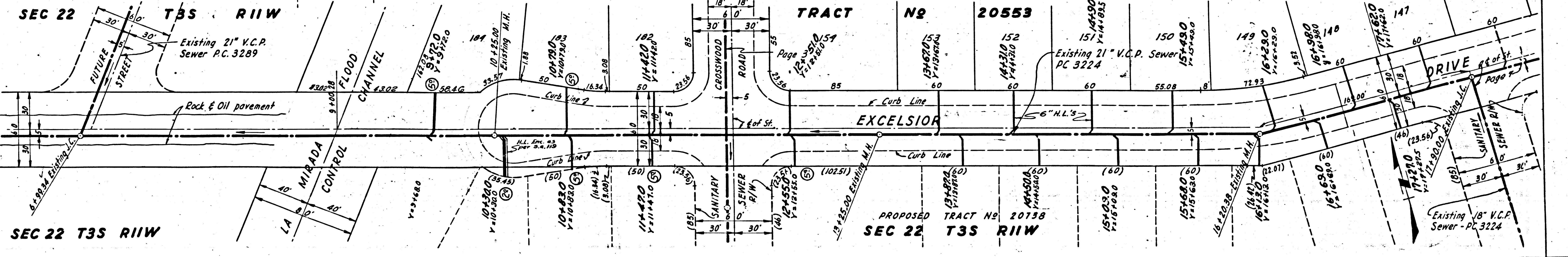
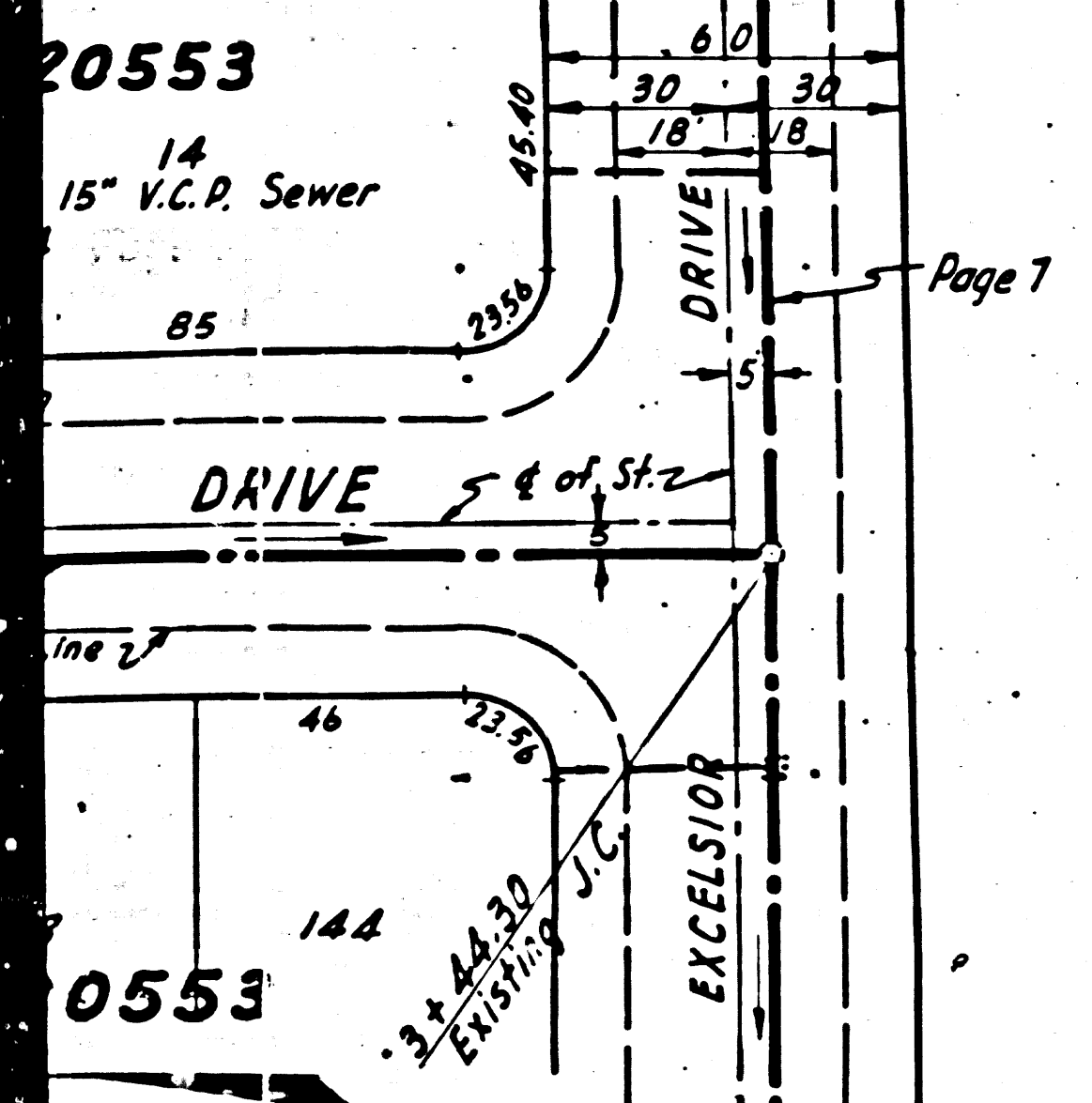
NO CHARGE FOR CONNECTIONS

P.C. 3401  
Page 8  
DOUBLE SCALE  
110

EXTRA STRENGTH PIPE IN HOUSE LATERALS

21,401

21,400



PROPOSED TRACT NO. 20738  
SEC 22 T3S R11W

13

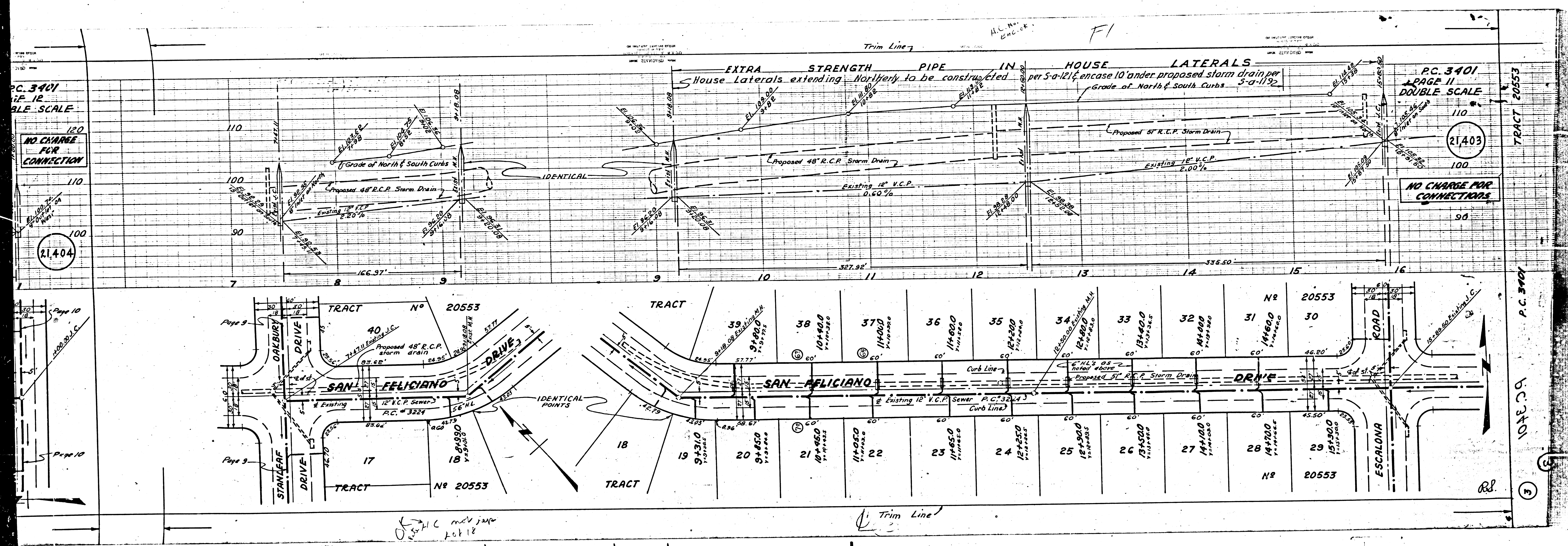




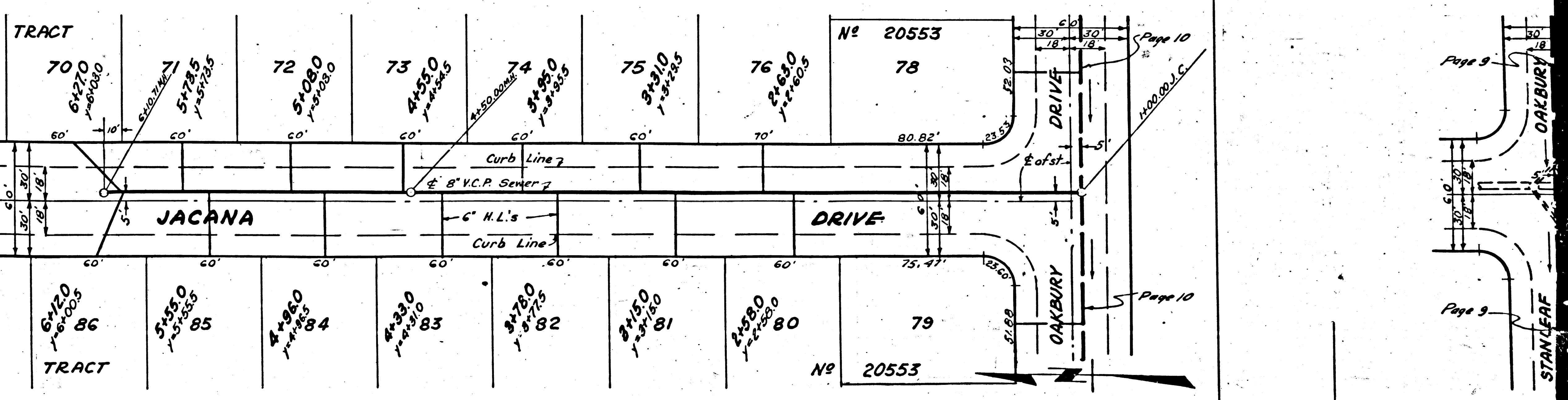
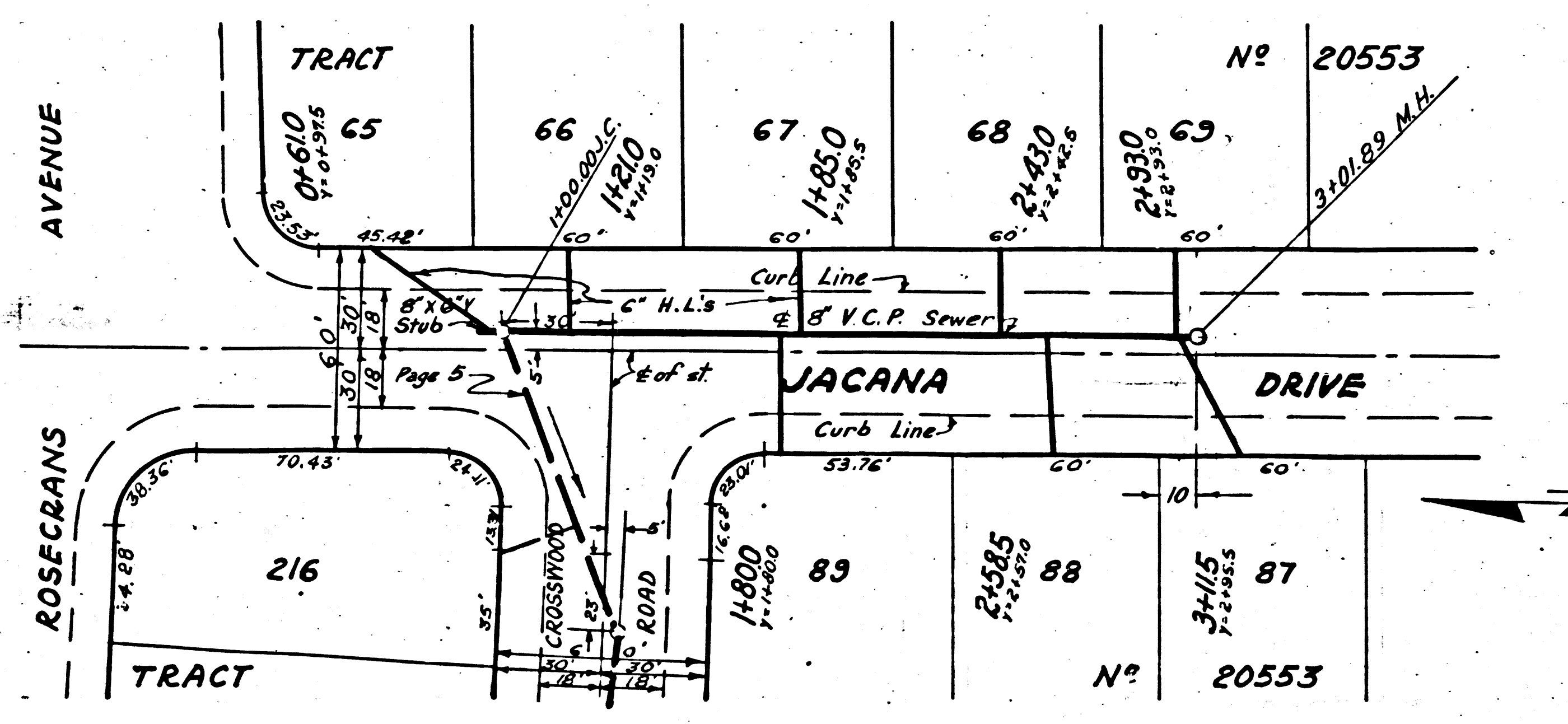
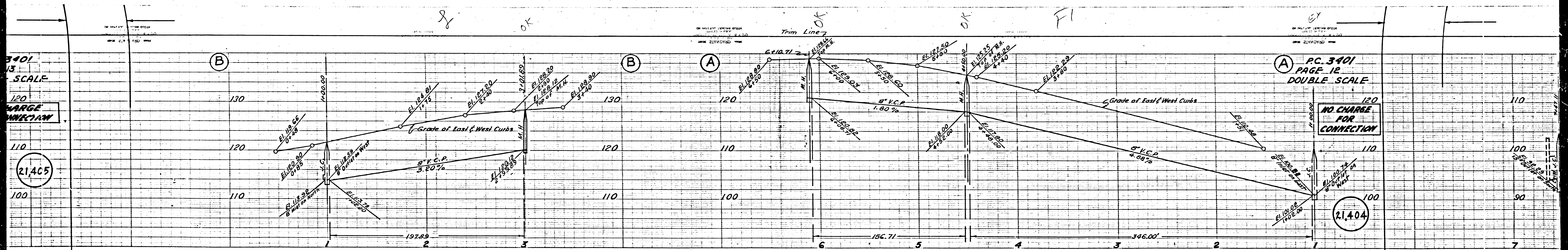












3401  
13  
SCALE

LARGE  
SECTION

21.405

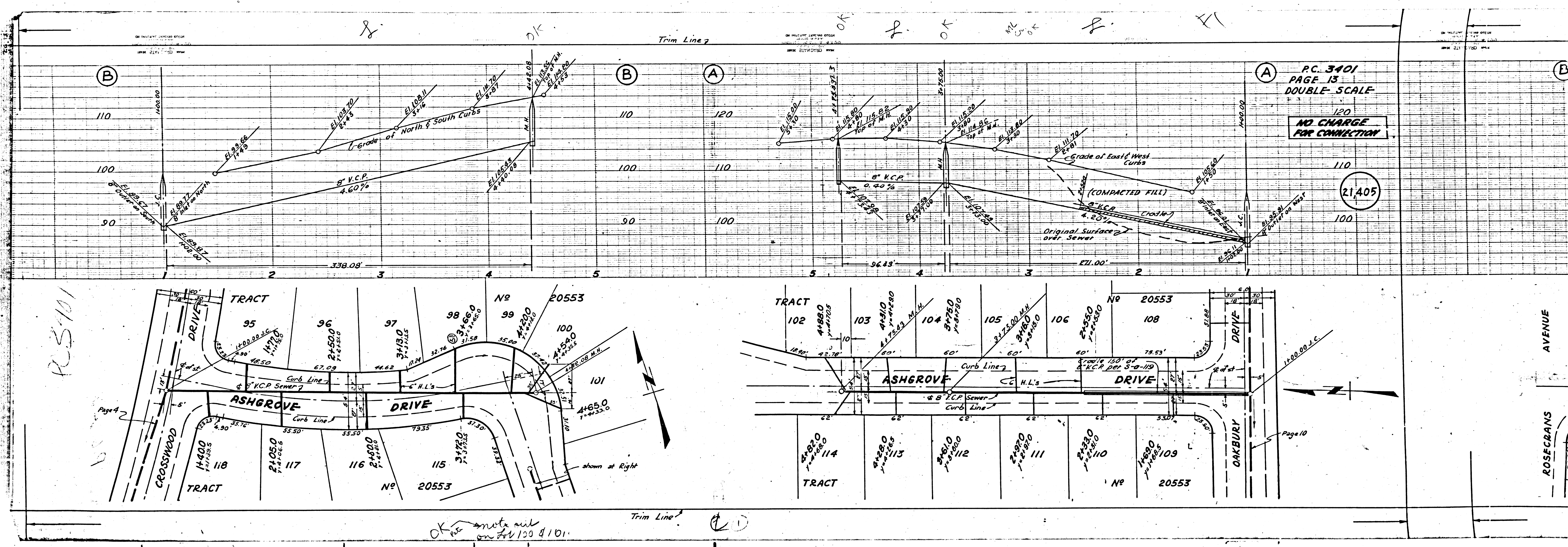
PC. 3401  
PAGE 12  
DOUBLE SCALE

NO CHARGE  
FOR  
CONNECTION

21.404

Trim Line





(B)

(B)

(A)

(A)

(B)

PC 3401  
PAGE 13  
DOUBLE SCALE

NO CHARGE  
FOR CONNECTION

120  
110  
100  
21,405

RS-101

Page 4

Page 10

OK note on lot 100 & 101

Trim Line

(C)

AVENUE  
ROSECRANS

1500.00 J.C.

Trim Line

Trim Line

Trim Line

Trim Line

Trim Line

Trim Line

Trim Line

Trim Line

Trim Line

Trim Line

Trim Line

Trim Line

Trim Line

Trim Line

Trim Line

Trim Line

Trim Line

Trim Line

Trim Line

Trim Line

Trim Line

Trim Line

Trim Line

Trim Line

Trim Line

Trim Line

Trim Line

Trim Line

Trim Line

Trim Line

Trim Line

Trim Line

Trim Line

Trim Line

Trim Line

Trim Line

Trim Line

Trim Line

Trim Line

Trim Line