

B.M. 11-B F.B. LQ 715, Pg 1
 2 FT in W. Curb Indian Summer
 Ave. 75' of E.C.R. Maplegrave St.
 122 2838

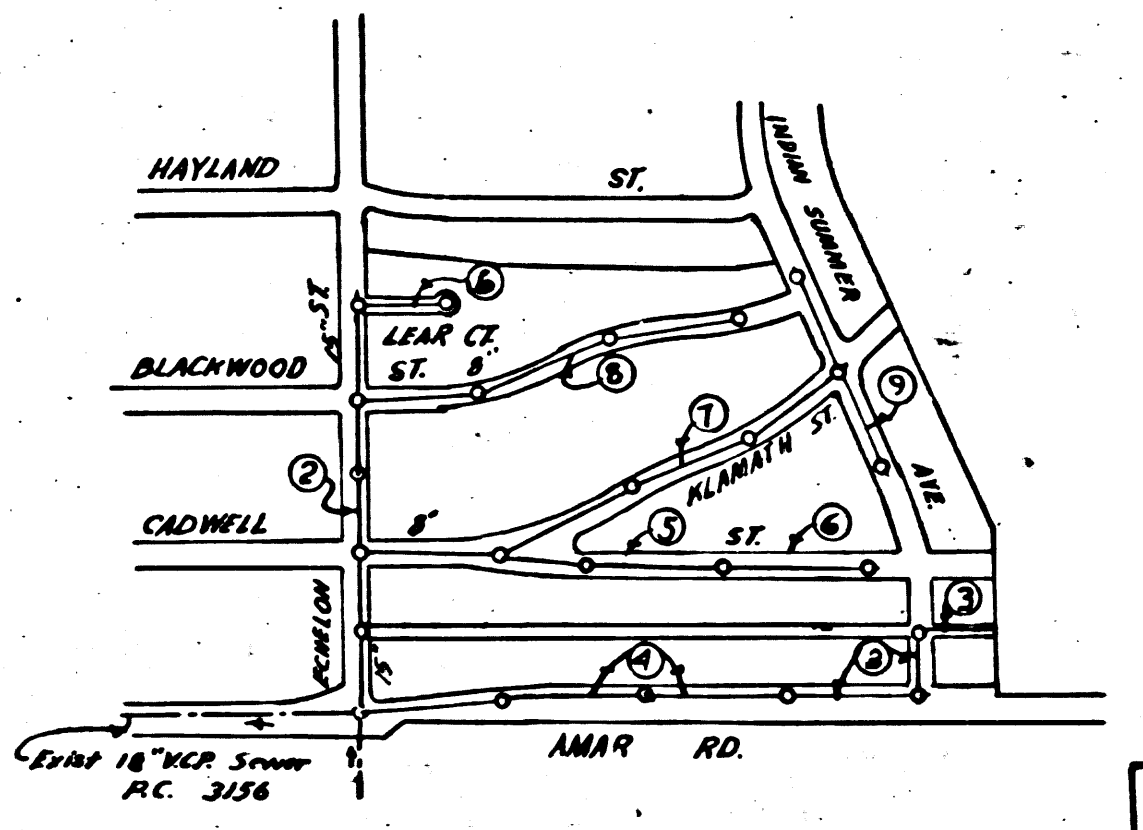
PRIM LINE 2
PUEENTE BLDG. DIST. NO 2

NOTE:
 Provide stakes on the property lines or property lines produced at right angles to the sewer line at the center line of each manhole.
 No representative of the County Engineer will survey or layout any portion of the work. The owner or his authorized representative shall furnish the County Engineer with grade sheets and stations for all house laterals and Y branches and shall provide stakes for them at their proper locations with stationing plainly marked. Any change in location shall be requested in writing by the owner or his representative.
 No revisions shall be made in these plans without the approval of the County Engineer.

1. Use standard manhole frames and covers, S-a-117.
2. Use standard strength pipe except as noted.
3. Use cement mortar for all vitrified clay pipe joints.
4. Resurface all trench within paved area to meet L.A. County Road Dept. or Calif. State Highway Dept. requirements in accordance with permit.
5. Encase four feet of sewer at points of interference with poles, S-a-119.
6. House laterals to be constructed with inverts at property line...feet below curb grade except as noted.
7. All structures shall be brick sewer structures, S-a-104.
8. Manhole tops in unimproved Rights-Of-Way to be 6" above finish grade.
9. For allowable leakage test, use Formula No. 1, Specs., Sec. 51.

NO CHARGE FOR CONNECTIONS
 5-18-55

SHEET	PAGES
1	1-4
2	5-9



INDEX MAP
 TRACT NO 18393
 Scale 1"=600'
 PC 3405

Approved, William J. Fox, County Engineer
 Office of the County Engineer

PROFILE, ALIGNMENT AND GRADE OF
SANITARY SEWERS
 TO BE CONSTRUCTED IN

TRACT NO 18393
 M.B. 309-34

PRIVATE CONTRACT NO. 3405
 W.S. 38
 2 SHEETS

Scale: VERT. 1"=6'
 HORIZ. 1"=40'
 MARCH 1955
 PREPARED IN THE OFFICES OF
L. FREDERICK PACK
 CIVIL ENGINEER
 FOR LEGEND SEE PLAN NO. S-a-64

NOTE:
 Grades to which this improvement is to be constructed are shown on plans and profiles. Grade points for top of curbs, center line of streets, or center line of alleys are shown by circles on profiles. At all points between designated points the grade shall be established so as to conform to a straight line drawn between said designated points.
 Elevations are in feet above U.S.G.S. datum or mean sea level.
 This drawing and the data hereon are hereby made a part of the specifications.
 Work shall be constructed according to specifications on file in the office of the County Engineer and shall be prosecuted only in the presence of the County Engineer.
 Before work can be started, the contractor must obtain a permit to excavate in County streets from the L.A. County Road Dept., 108 W. 2nd St. and make a deposit with the County Engineer, Am. 324, 233 So. Broadway, sufficient to cover the cost of construction inspection and record plans.
 Approval of this plan by the County of Los Angeles does not constitute a representation as to the accuracy of the location of or the existence or non-existence of any underground utility, pipe, or structure within the limits of this project. This note applies to all sheets.
 If work is to be done in a State Highway, a permit must be obtained from the State of California, Division of Highways, 120 South Spring Street.

COUNTY OF LOS ANGELES, CALIFORNIA
 Approved, William J. Fox, County Engineer
 Approved, A. M. Rawm
 CHIEF BRICK CO. JAN. DIST. NO. 15
 Office Engineer
 Checked By: [Signature] 7-6-55
 Office of County Engineer, Reg. C. E. No. 7840

PC 3405
 Page 1
DOUBLE SCALE

21,279

TRACT NO 18393

Revised 9-12-55 M. [Signature]

PRIM LINE 2
 (D)

PC 3405
Page 3

DOUBLE SCALE

NO CHARGE FOR CONNECTION

21,281

370

360

350

340

330

320

310

300

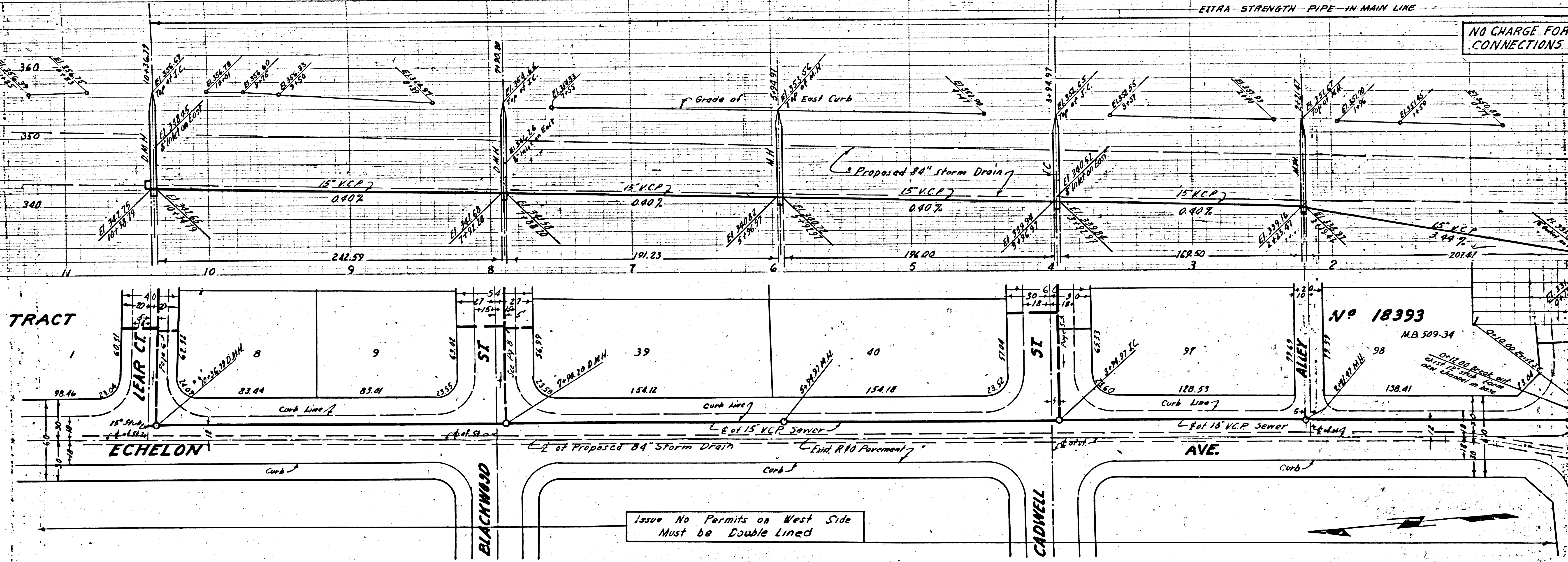
290

280

270

260

250



PC 3405
Page 2

DOUBLE SCALE

NO CHARGE FOR CONNECTIONS

21,280

370

360

350

340

330

320

310

300

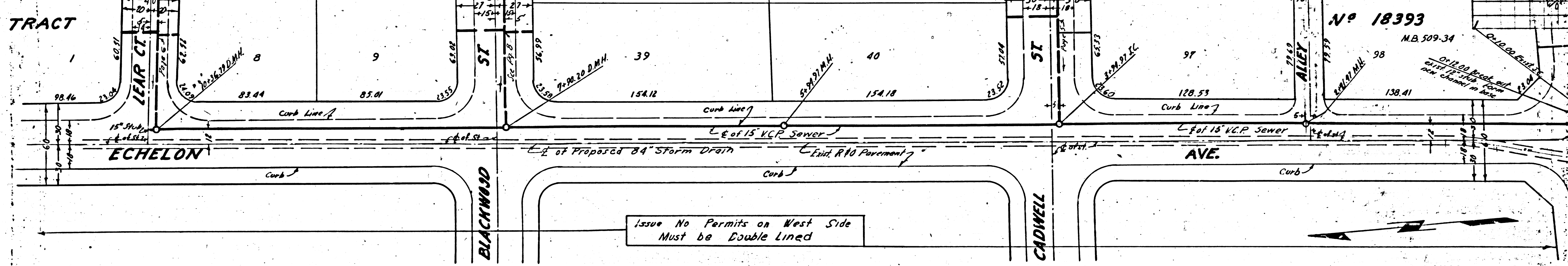
290

280

270

260

250



Issue No Permits on West Side
Must be Double Lined

No 18393
M.B. 509-34

CHIEF ENGINEER
DATE: 10/15/17

NO. 18393

CHIEF ENGINEER
DATE: 10/15/17

NO. 18393

CHIEF ENGINEER
DATE: 10/15/17

NO. 18393

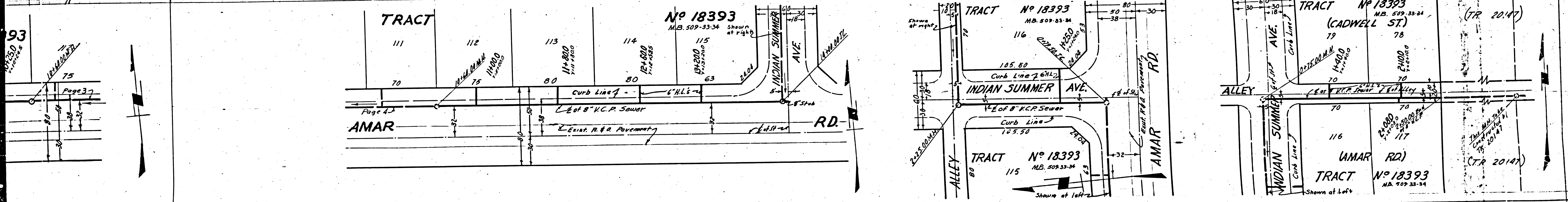
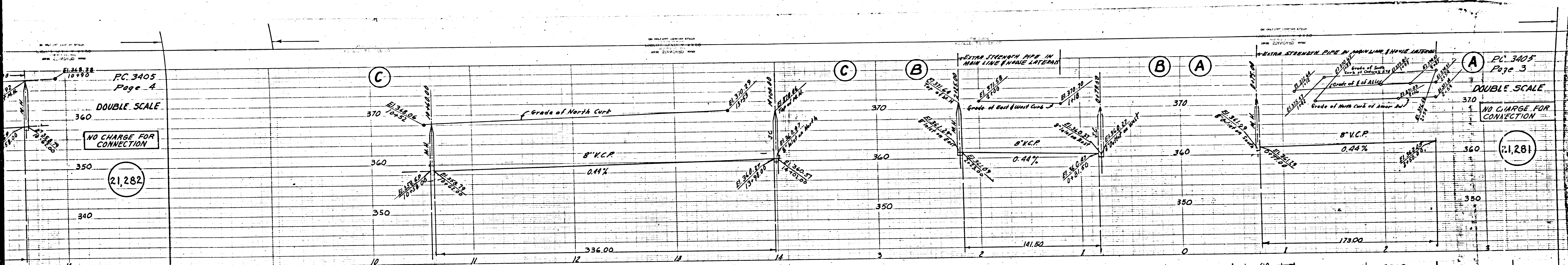
CHIEF ENGINEER
DATE: 10/15/17

NO. 18393

CHIEF ENGINEER
DATE: 10/15/17

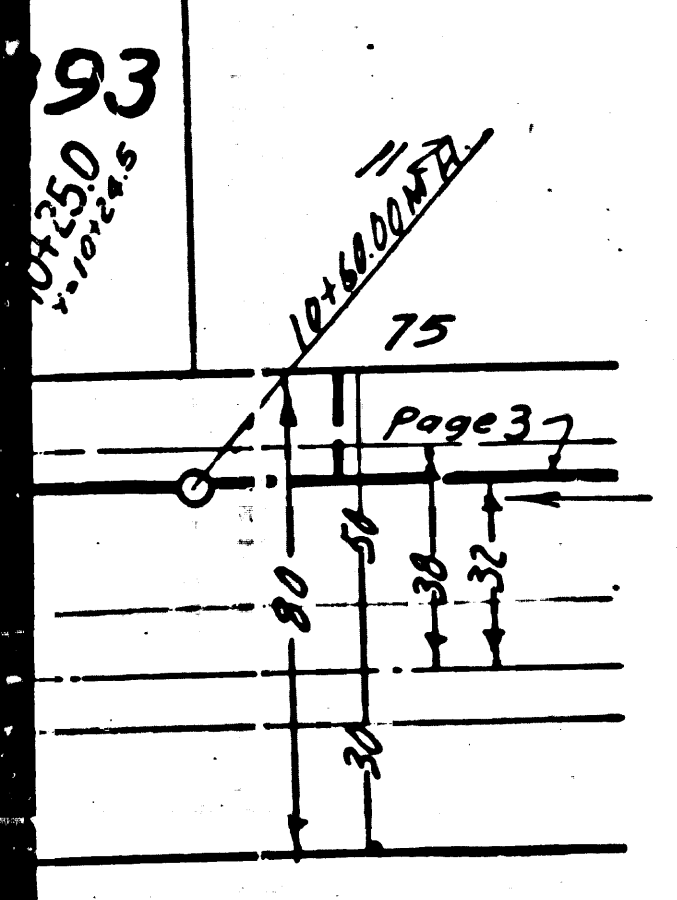
NO. 18393

CHIEF ENGINEER
DATE: 10/15/17

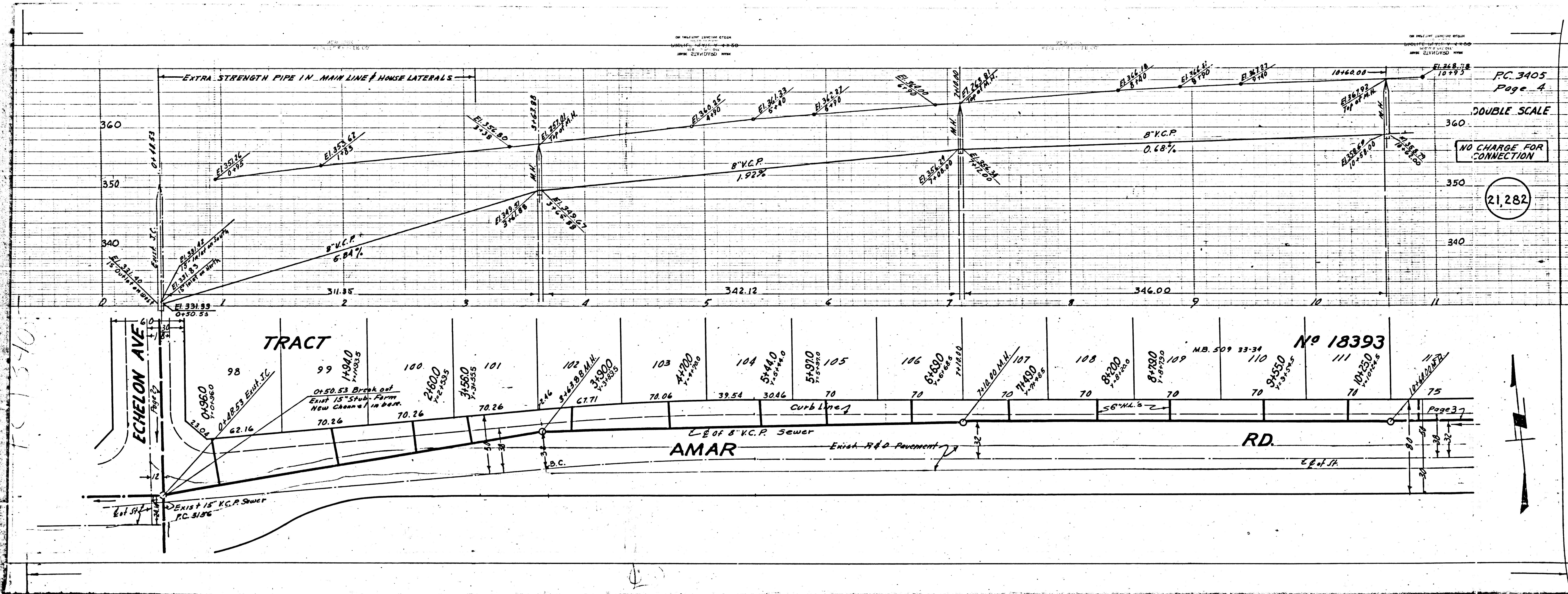


PC 3405
Page 4
DOUBLE SCALE
NO CHARGE FOR CONNECTION
21,282

PC 3405
Page 3
DOUBLE SCALE
NO CHARGE FOR CONNECTION
21,281



(TR 20147)
AMAR RD
INDIAN SUMMER AVE
ALLEY



FC 3405
Page A

DOUBLE SCALE

NO CHARGE FOR CONNECTION

21,282

Page 37

FC 3405

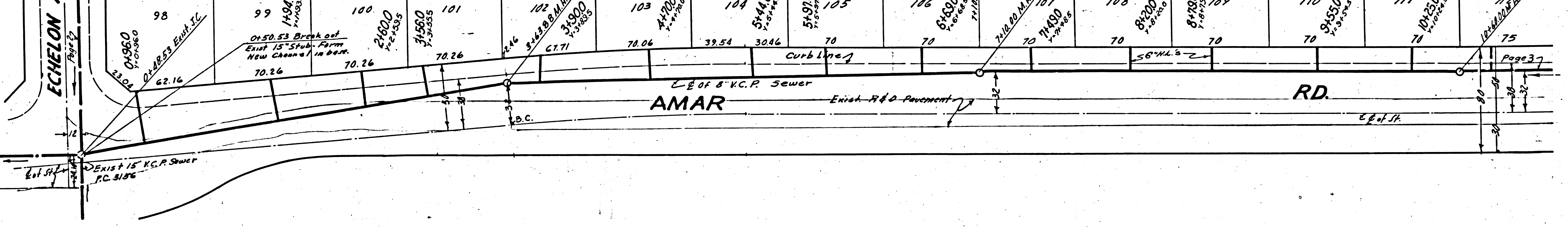
ECHOLON AVE

TRACT

AMAR

RD.

No 18393



PC 3405
Page 5

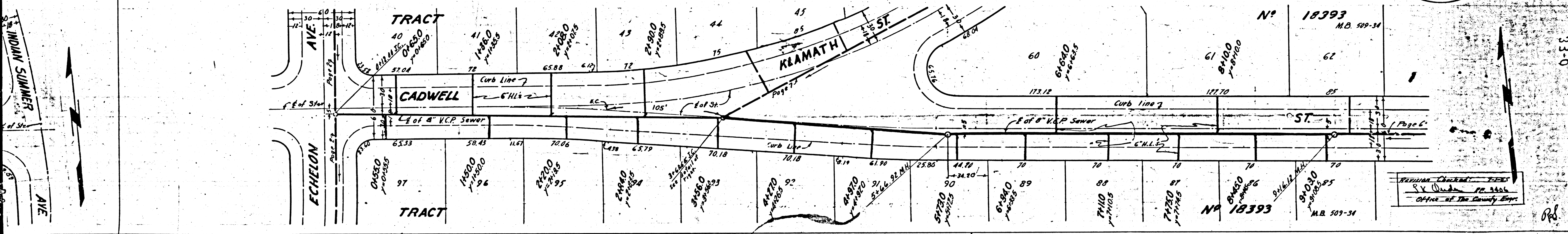
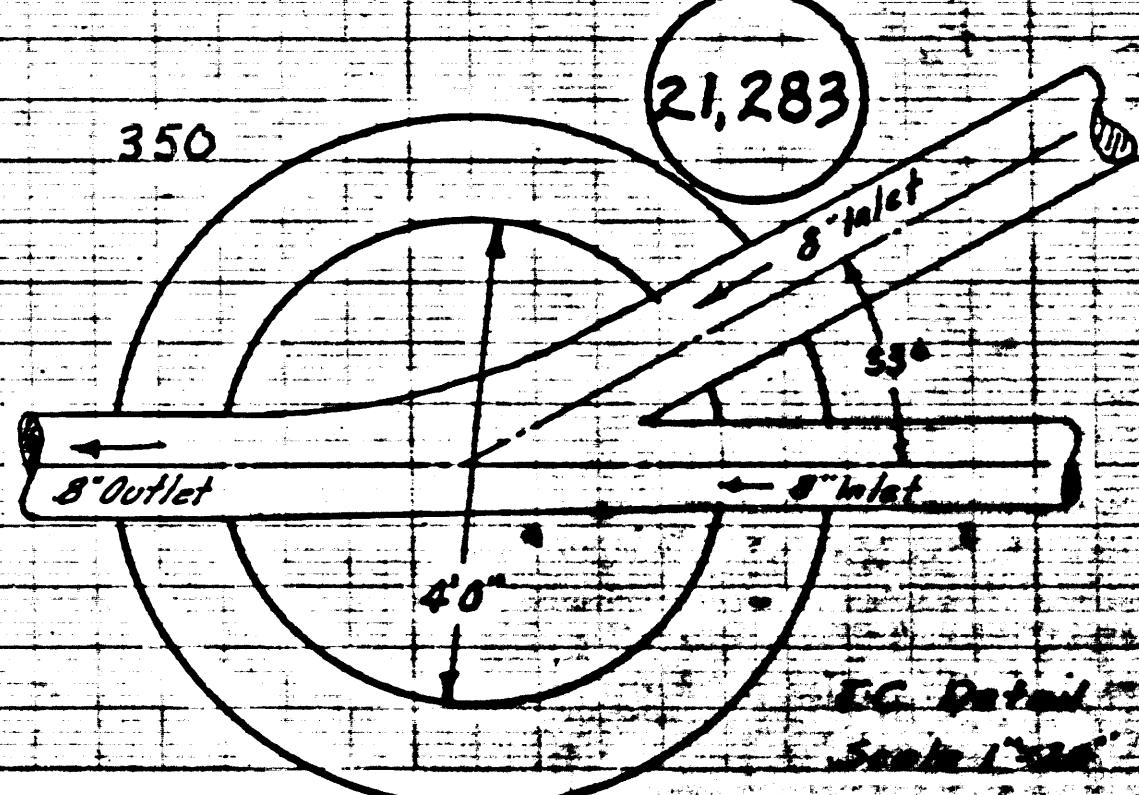
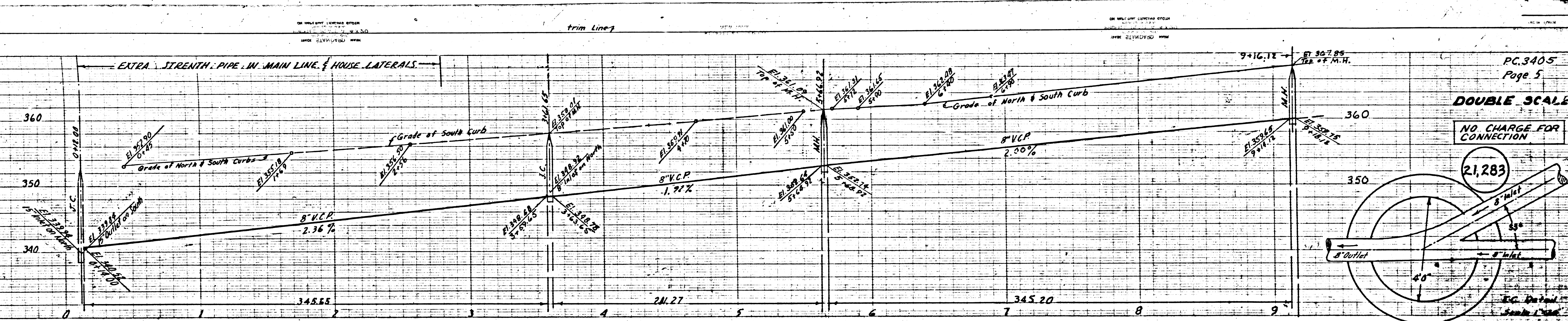
DOUBLE SCALE
NO CHARGE FOR CONNECTIONS

21,284

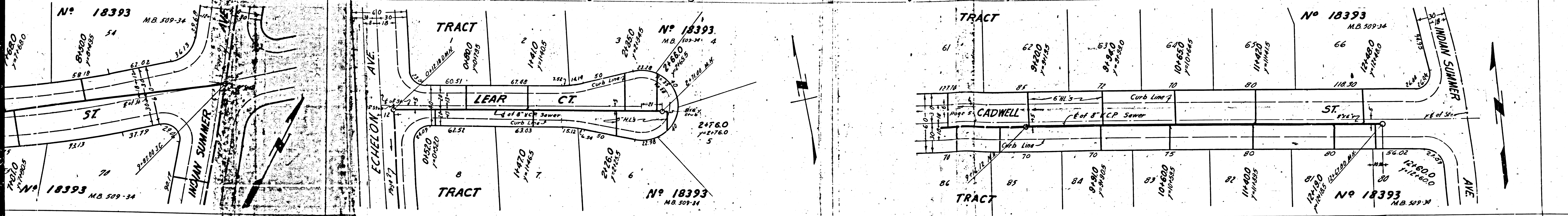
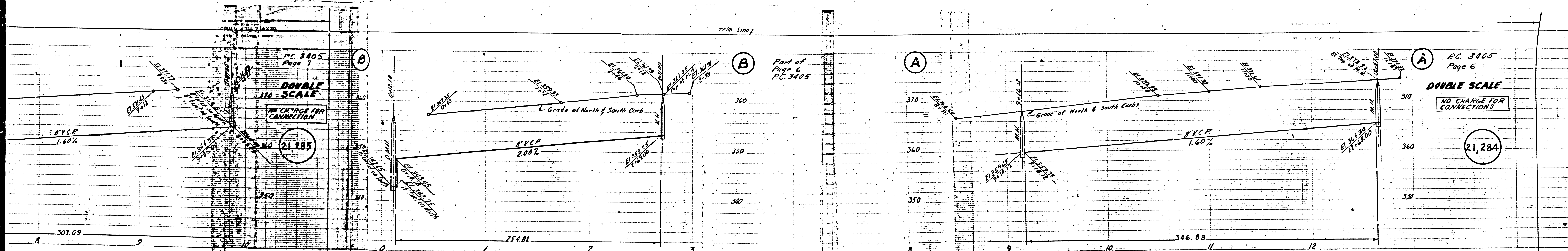
PC 3405
Page 5

DOUBLE SCALE
NO CHARGE FOR CONNECTIONS

21,283



33-0

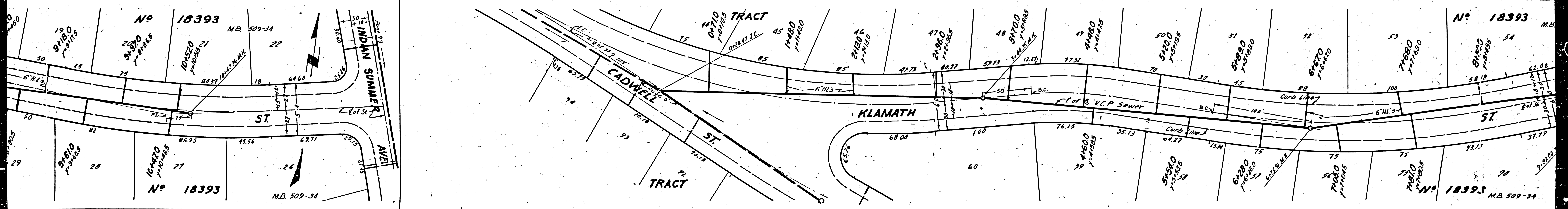
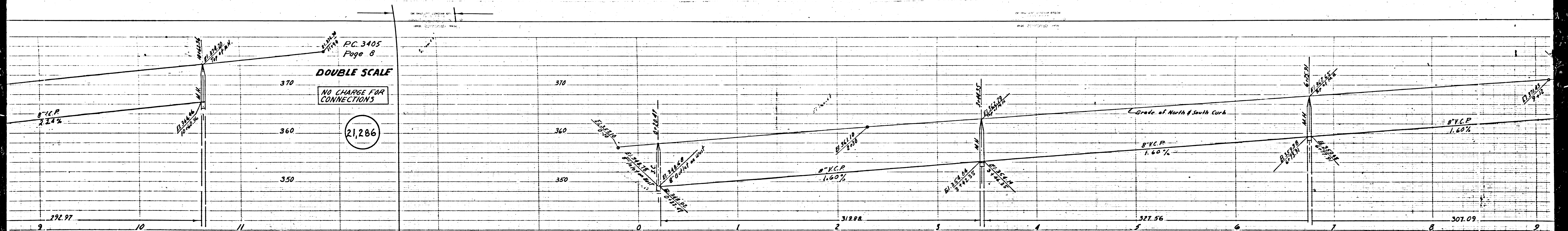


PC 3405
Page 8

DOUBLE SCALE

NO CHARGE FOR CONNECTIONS

21,286



(A)

PC 3405
Page 3

DOUBLE SCALE

NO CHARGE FOR CONNECTION

21,287

