

P.C. 3409

PAGE-2

LARGE CONNECTIONS

20,667

PAGE TRIM LINE

20,667

BENCH MARK:  
S.G. 455 - L & B.M. AT ANGLE POINT OF  
CONCRETE HEADWALL NORTH EAST CORNER  
OF PUENTE AVE. & GRAND AVE.  
ELEV. = 594.677

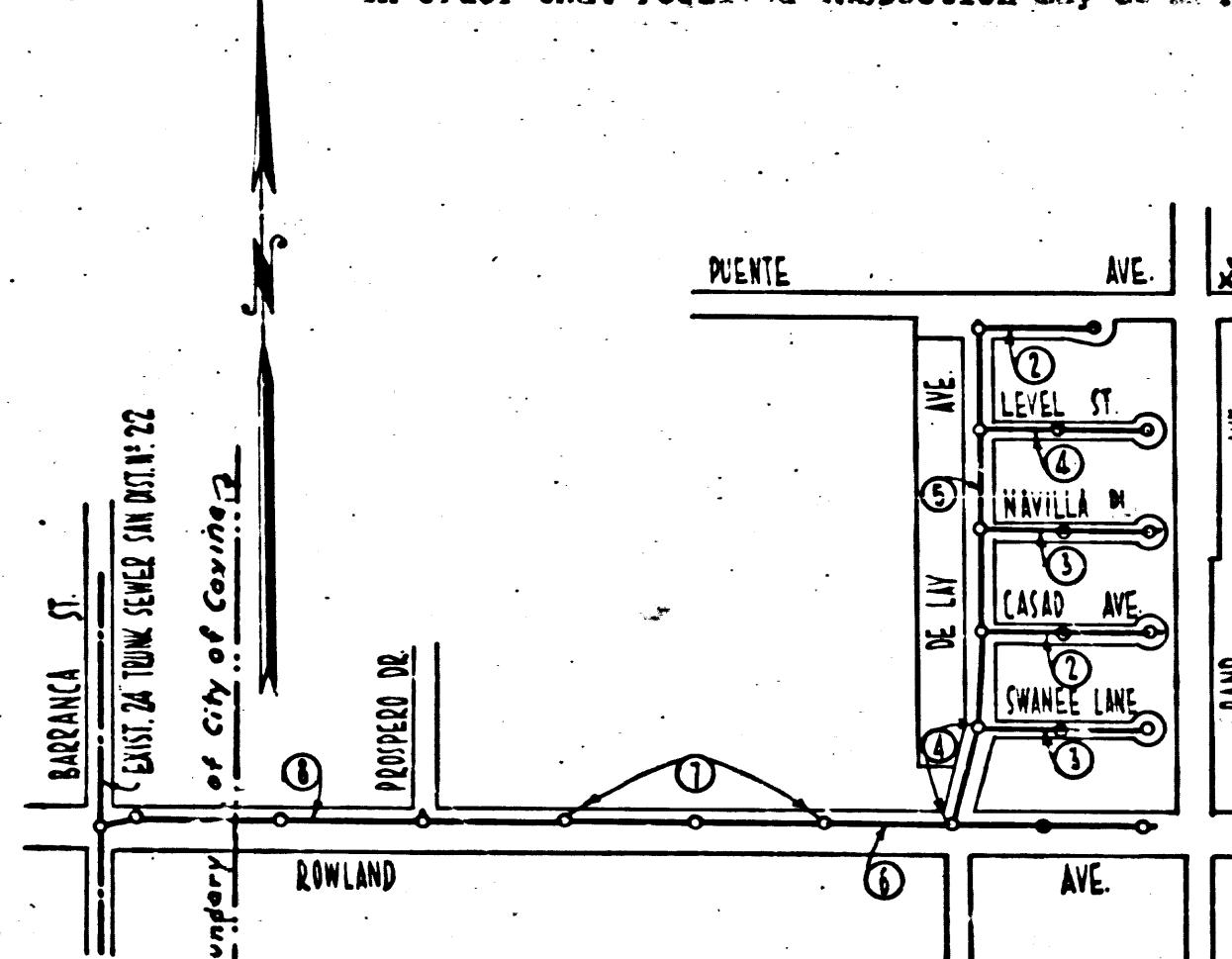
TRIM LINE 1  
SAN DIMAS BLDG. DIST. No 10

- NOTE:  
Provide stakes on the property lines or property lines produced at right angles to the sewer line at the center line of each manhole.  
No representative of the County Engineer will survey or layout any portion of the work.  
The owner or his authorized representative shall furnish the County Engineer with grade sheets and stations for all house laterals and Y branches and shall provide stakes for them at their proper locations with stationing plainly marked. Any change in location shall be requested in writing by the owner or his representative.  
No revisions shall be made in these plans without the approval of the County Engineer.
1. Use standard manhole frames and covers, S-a-117.
  2. Use standard strength pipe except as noted.
  3. Use cement mortar for all vitrified clay pipe joints.
  4. Resurface all trench within paved area to meet L.A. County Road Dept. or California State Highway Dept. requirements in accordance with permit.
  5. Encase four feet of sewer at points of interference with poles, S-a-119.
  6. House laterals to be constructed with inverts at property line 6 feet below curb grade except as noted.
  7. All structures shall be brick sewer structures, S-a-104.
  8. For allowable leakage test, use Formula No. 1, Spec's., Sec. 51.
  9. Manhole tops in unimproved Rights-Of-Way to be 6" above finish grade.

Before breaking into any existing structure and before final acceptance of this work, County Sanitation District should be notified in order that required inspection may be made.

TABLE

SHEET NO.	PAGES
1	1-5
2	6-8



INDEX MAP  
SCALE: 1"=400'  
TRACT NO. 20267  
P.C. 3409

PROFILE, ALIGNMENT AND GRADE OF  
SANITARY SEWERS  
TO BE CONSTRUCTED IN

TRACT No. 20267

PRIVATE CONTRACT NO. 3409  
W. S. 47  
TWO SHEETS

Scale: VERT. 1"=4'  
HORIZ. 1"=40'  
FEB. 1955  
PREPARED IN THE OFFICES OF  
L. FREDERICK PACK

FOR LEGEND SEE PLAN NO. S-a-64

NOTE:  
Grades to which this improvement is to be constructed are shown on plans and profiles. Grade points for top of curbs, center line of streets, or center line of alleys are shown by circles on profiles. At all points between designated points the grade shall be established so as to conform to a straight line drawn between said designated points.  
Elevations are in feet above U.S.S.S. datum or mean sea level.  
This drawing and the data hereon are hereby made a part of the specifications.  
Work shall be constructed according to specifications on file in the office of the County Engineer and shall be prosecuted only in the presence of the County Engineer.  
Before work can be started, the contractor must obtain a permit to excavate in County streets from the L.A. County Road Dept., 108 W. 2nd St. and make a deposit with the County Engineer, Room 324, 222 So. Broadway, sufficient to cover the cost of construction inspection and record plans.  
Approval of this plan by the County of Los Angeles does not constitute a representation as to the accuracy of the location of or the existence or non-existence of any underground utility, pipe, or structure within the limits of this project. This note applies to all sheets.  
If work is to be done in a State Highway, a permit must be obtained from the State of California, Division of Highways, 120 South Spring Street.

COUNTY OF LOS ANGELES, CALIFORNIA  
Approved, William J. Fox, County Engineer  
Approved, A. M. Rawn  
Sanitation Engineer  
San. Dist. No. 10  
Office Engineer

CITY OF COVINA  
Approved: *[Signature]* Date: 4-4-55  
Paul E. Kressly, R.E. 783  
City Engineer of the City of Covina

Revision Approved:  
by *[Signature]* 5-11-55  
Office of County Engineer  
Reg. RE No 9406

CONNECTION CHARGES  
AS INDICATED  
*[Signature]* 3-28-55

P.C. 3409  
Page 1

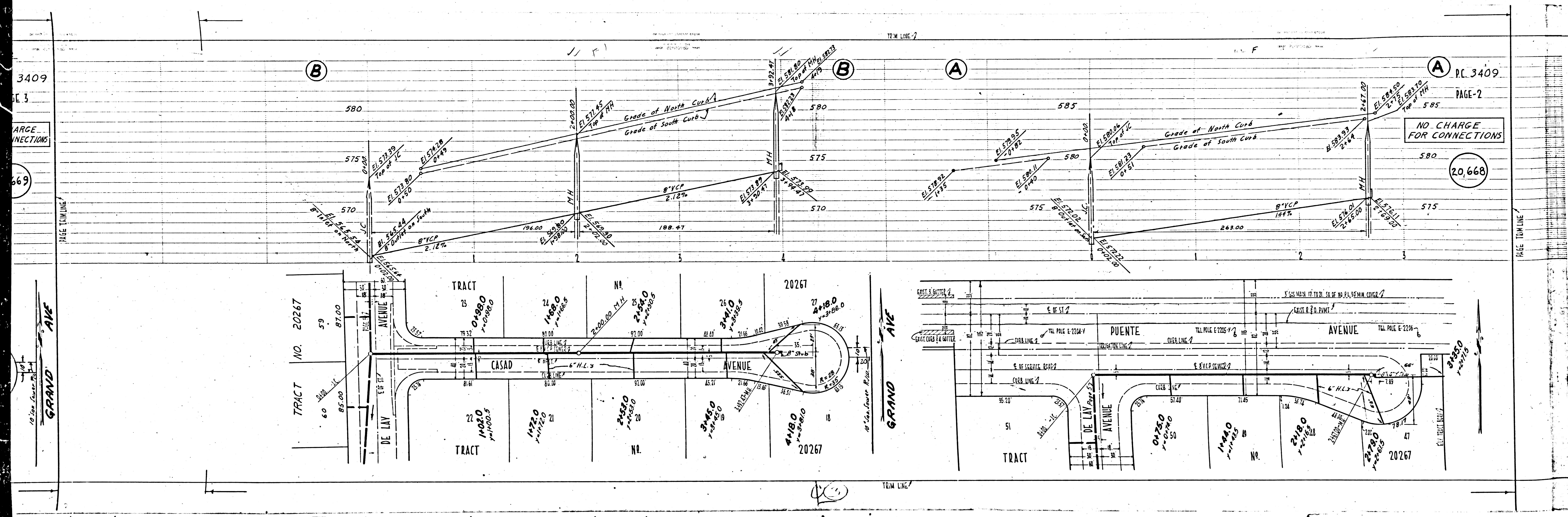
20,667

TRACT No. 20267

P.C. 3409

dated 6-17-55 *[Signature]*

PRB



3409  
PAGE 3  
LARGE CONNECTIONS  
669

(B)

(B)

(A)

(A)

P.C. 3409

PAGE-2

NO CHARGE FOR CONNECTIONS

20,668

PAGE TWO LINE

TERM LINE

P.C. 3409  
PAGE A

NO CHARGE FOR CONNECTIONS

20,570

75

UENTE

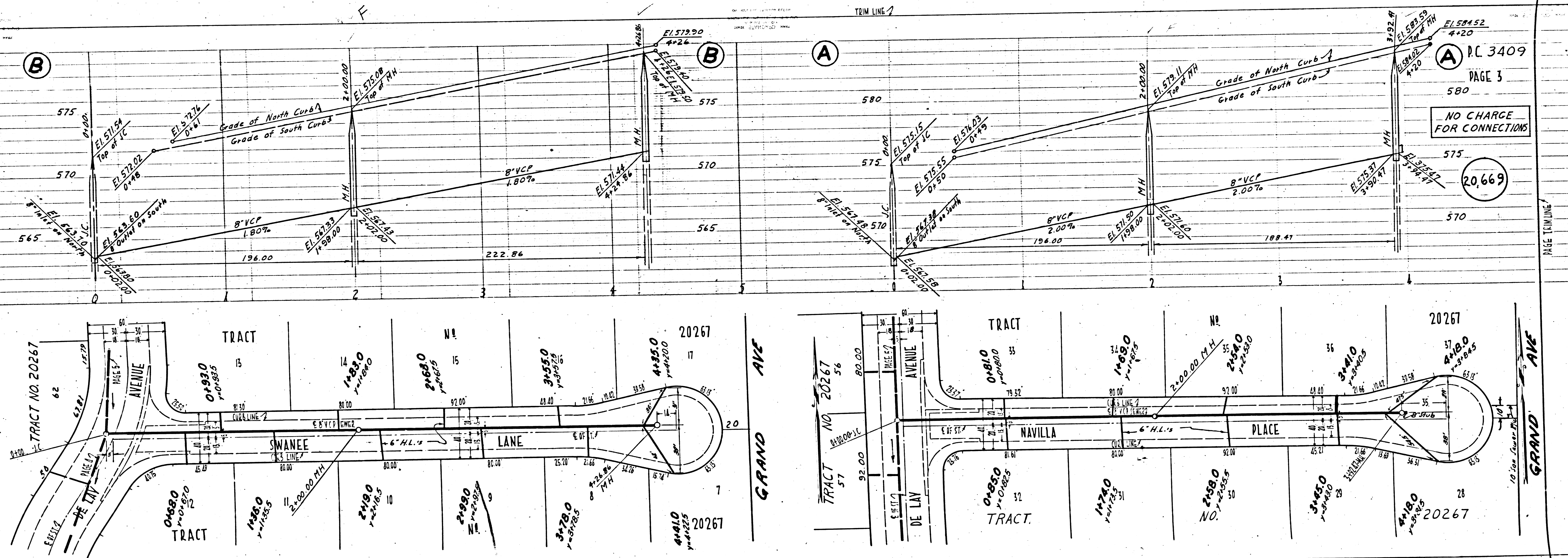
13-14

20

57

57

GRAND AVE



P.C. 3409  
PAGE 3

NO CHARGE FOR CONNECTIONS

20,669

575

570

20267

57

57

57

57

57

57

57

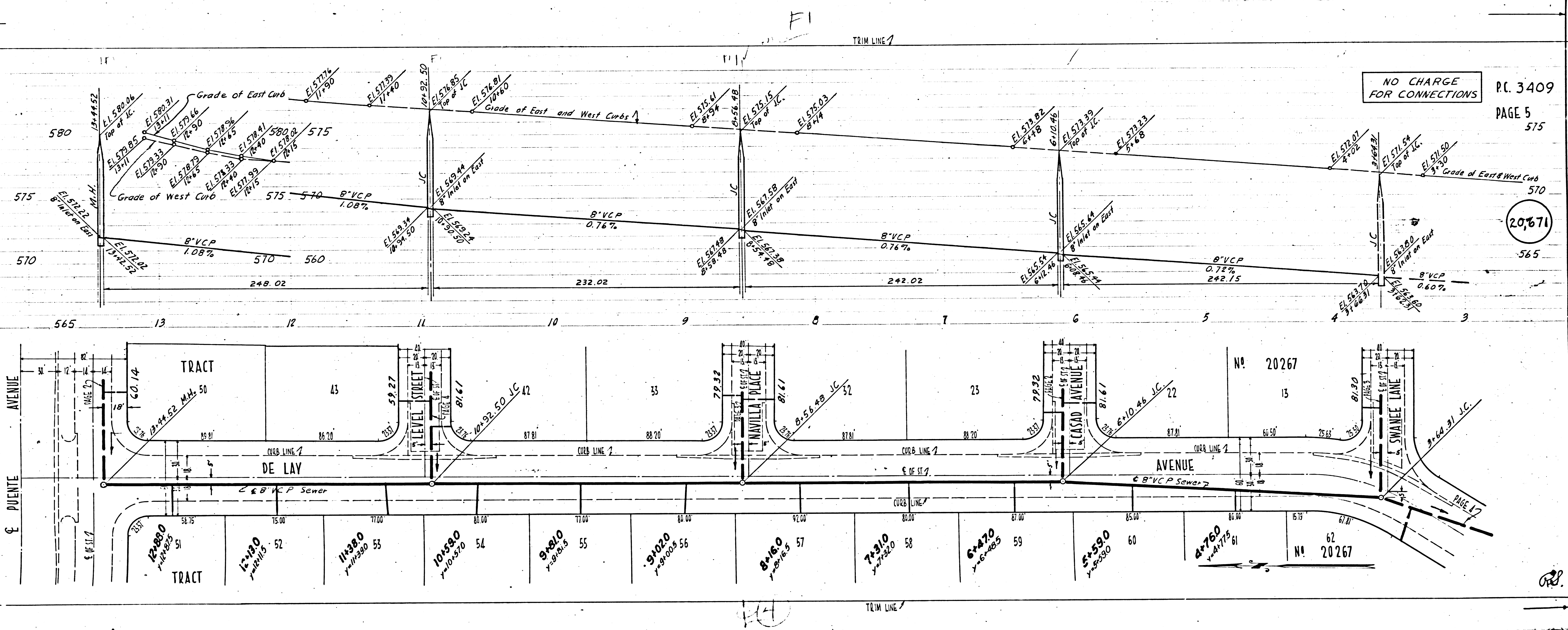
57

57

57

57

20,672



20,671

TRACT NO 20267

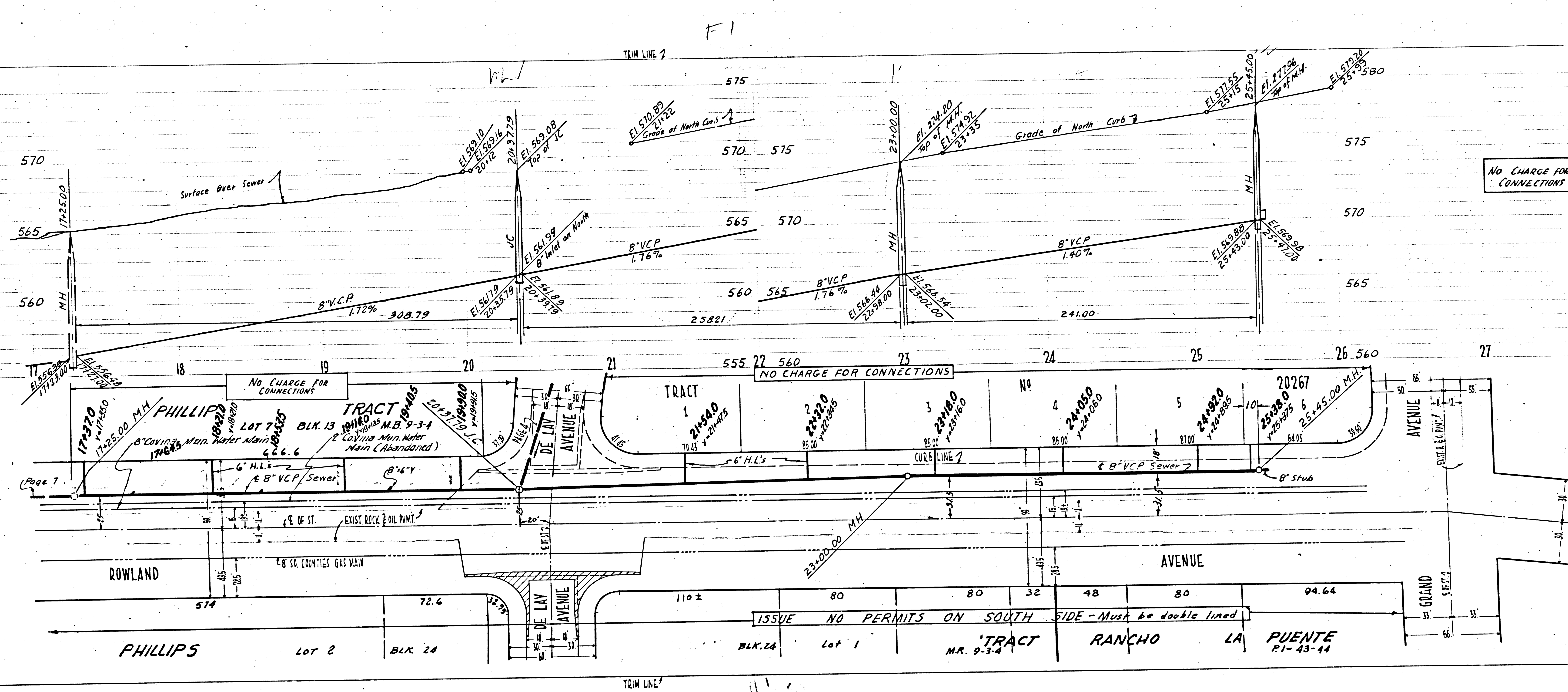
PC 3409  
PAGE 6

20,672

TRACT NO 20267

20,673

20,672



NO CHARGE FOR CONNECTIONS

NO CHARGE FOR CONNECTIONS

ISSUE NO PERMITS ON SOUTH SIDE - Must be double lined

PHILLIPS LOT 2 BLK 24 TRACT 1 2 3 4 5 6 20267 25000 25455.00 P.H.

ROWLAND PHILLIPS TRACT RANCHO LA PUENTE

P.C. 3409

PAGE 8

CONNECTION CHARGES AS INDICATED

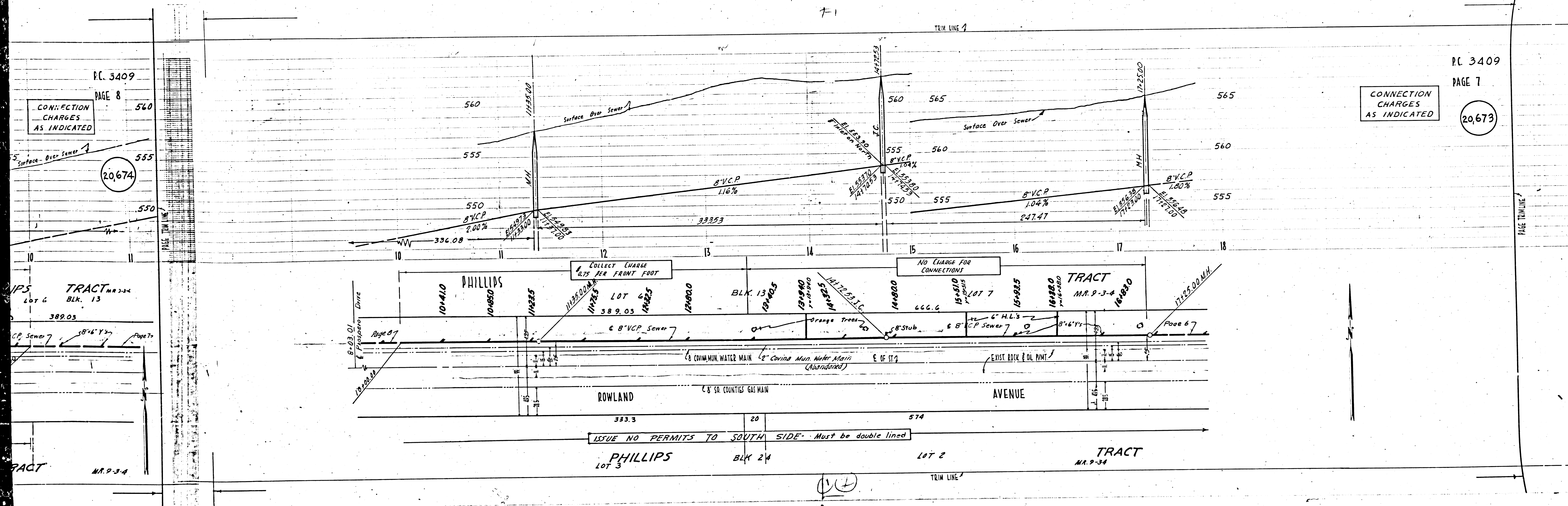
20,674

P.C. 3409

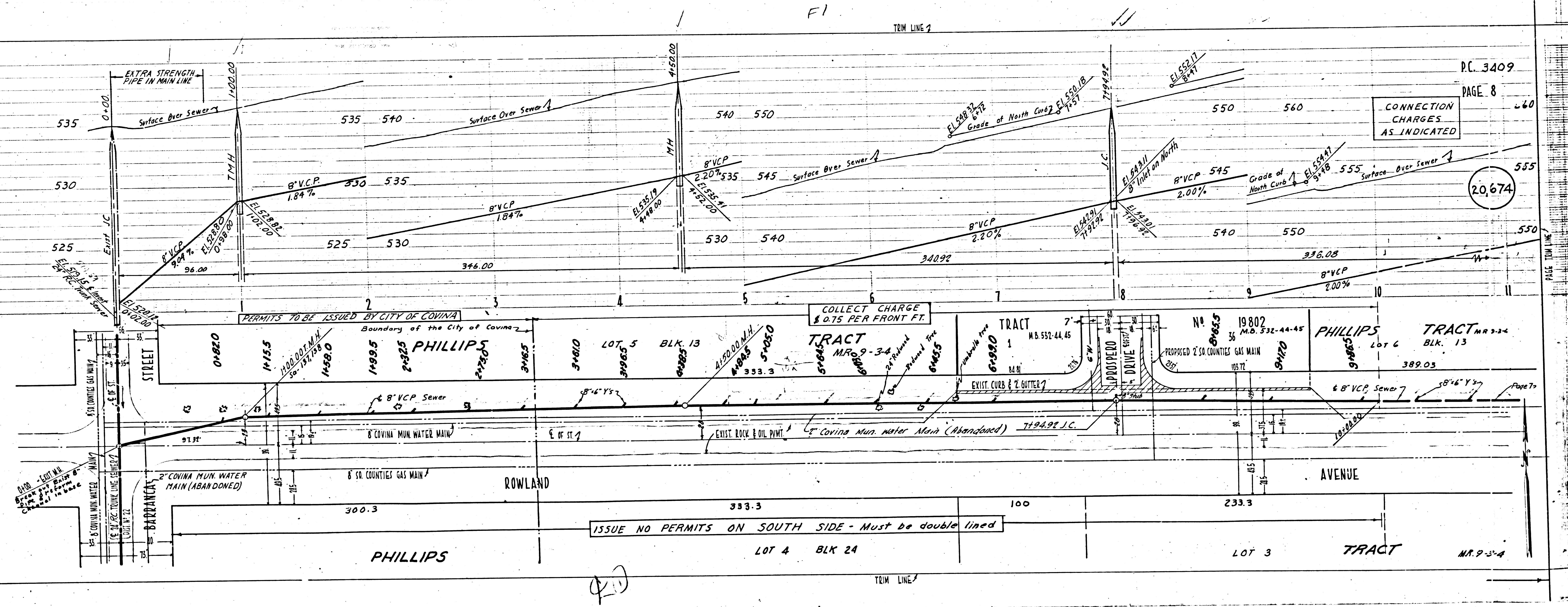
PAGE 7

CONNECTION CHARGES AS INDICATED

20,673



PC 3409



P.C. 3409  
PAGE 8  
CONNECTION CHARGES AS INDICATED

20,674

ISSUE NO PERMITS ON SOUTH SIDE - Must be double lined

COLLECT CHARGE \$ 0.75 PER FRONT FT.

PERMITS TO BE ISSUED BY CITY OF COVINA

Boundary of the City of Covina

TRACT

TRACT

PHILLIPS TRACT

TRACT

ROWLAND AVENUE

AVENUE

PHILLIPS

LOT 4 BLK 24

LOT 3

TRACT

TRACT

TRIM LINE

TRIM LINE