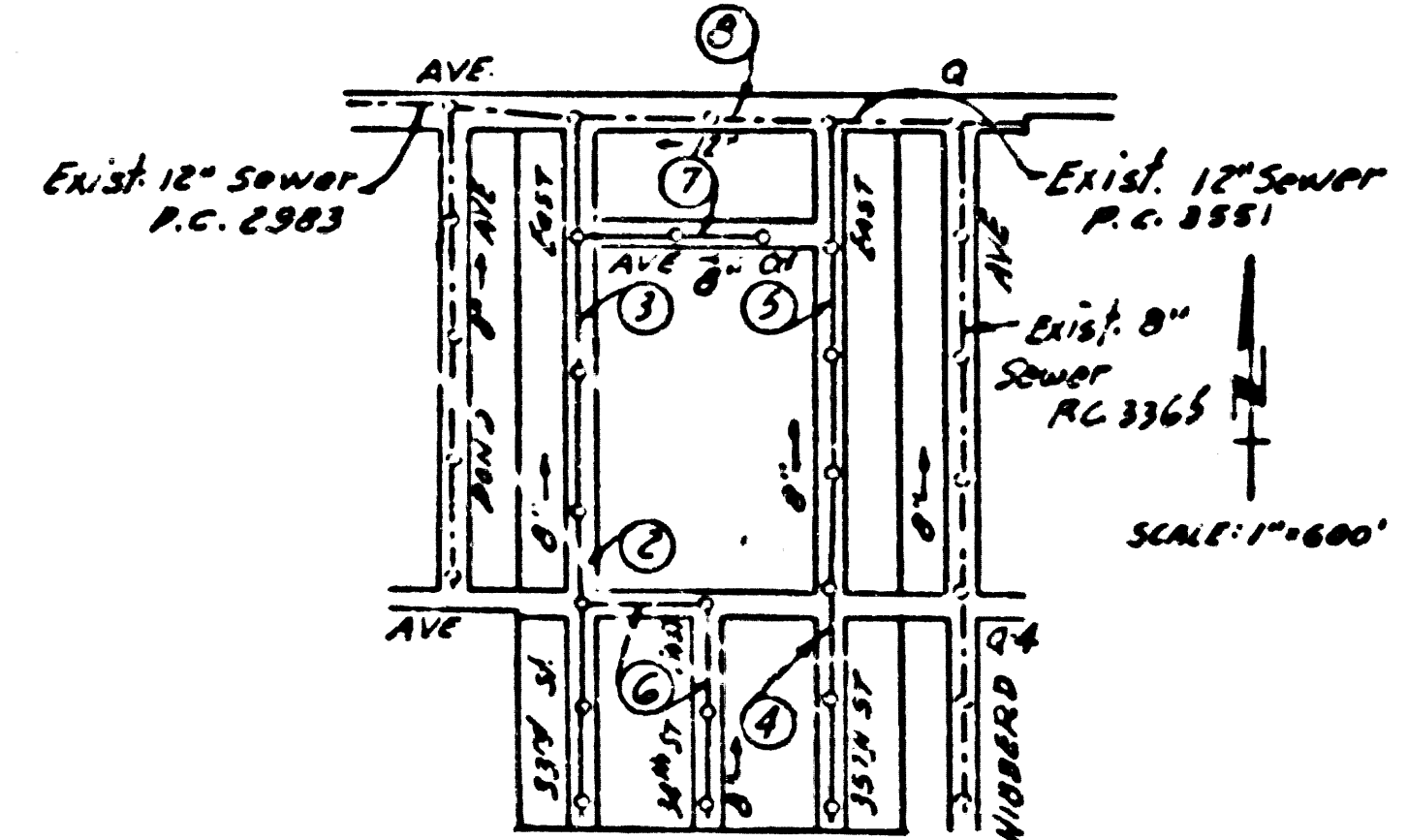


BM-US 2168 El. 2599.161 35th St East of Palmdale Blvd.
 23 m. E. of Palmdale, 30' N. of Hwy. Top of conc. Mar.
 A bronze disk stamped L.S. 1929

SHEETS	PAGES
1	1-5
2	6-8

- NOTE: PALMDALE BLDG DIST N^o 6P**
 Provide stakes on the property lines or property lines produced at right angles to the sewer line at the corner line of each manhole.
- No representative of the County Engineer will survey or layout any portion of the work.
- The owner or his authorized representative shall furnish the County Engineer with grade sheets and stations for all house laterals and Y branches and shall provide stakes for them at their proper locations with stationing plainly marked. Any change in location shall be requested in writing by the owner or his representative.
- No revisions shall be made in these plans without the approval of the County Engineer.
1. Use standard manhole frames and covers, S-a-117.
 2. Use standard strength pipe except as noted.
 3. Use cement mortar for all vitrified clay pipe joints.
 4. Resurface all trench within paved area to meet L.A. County Road Dept. or California State Highway Dept. requirements in accordance with permit.
 5. Encase four feet of sewer at points of interference with poles, S-a-119.
 6. House laterals to be constructed with inverts at property line 6 feet below curb grade except as noted.
 7. All structures shall be brick sewer structures, S-a-104.
 8. For allowable leakage test, use Formula No. Spec's, Sec. 51.
 9. Manhole tops in unimproved Rights-Of-Way to be 6" above finish grade.
 10. Ball all pipe joints with 4" cement mortar that are within 20 ft of all property lines.



NO CHARGE FOR CONNECTIONS
March 7-55

INDEX MAP
 TRACT N^o 19367
 P.C. 3414

PROFILE, ALIGNMENT AND GRADE OF
SANITARY SEWERS
 TO BE CONSTRUCTED IN
TRACT N^o 19367

P.C. 3414
 Page 1

24,410
 (8)

PRIVATE CONTRACT NO. 3414
 W. S. 65
 Two SHEETS
 Scale: 1" = 40' HORIZ. 1" = 4' VERT.
 MARCH 1955
 PREPARED IN THE OFFICES OF

[Signature]
 Reg. C. E. No. 6027

FOR LEGEND SEE PLAN NO. S-a-64

NOTE:
 Grades to which this improvement is to be constructed are shown on plans and profiles. Grade points for top of curbs, center line of streets, or center line of alleys are shown by circles on profiles. At all points between designated points the grade shall be established so as to conform to a straight line drawn between said designated points.

Elevations are in feet above U.S.G.S. datum or mean sea level.

This drawing and the data hereon are hereby made a part of the specifications.

Work shall be constructed according to specifications on file in the office of the County Engineer and shall be prosecuted only in the presence of the County Engineer.

Before work can be started, the contractor must obtain a permit to excavate in County streets from the L.A. County Road Dept., 1108 W. 2nd St. and make a deposit with the County Engineer, Rooms 318, 223 South Broadway sufficient to cover the cost of construction inspection and record plans.

Approval of this plan by the County of Los Angeles does not constitute a representation as to the accuracy of the location or the existence or non-existence of any underground utility, pipe, or structure within the limits of this project. This note applies to all sheets.

If work is to be done in a State Highway, a permit must be obtained from the State of California, Division of Highways, 120 South Spring Street.

COUNTY OF LOS ANGELES, CALIFORNIA

Approved, William J. Fox, County Engineer
 Approved, A. M. Rawn
 CHIEF ENGR. CO. SAN. DIST. NO. 20

[Signature]
 City Engineer

[Signature]
 Office Engineer

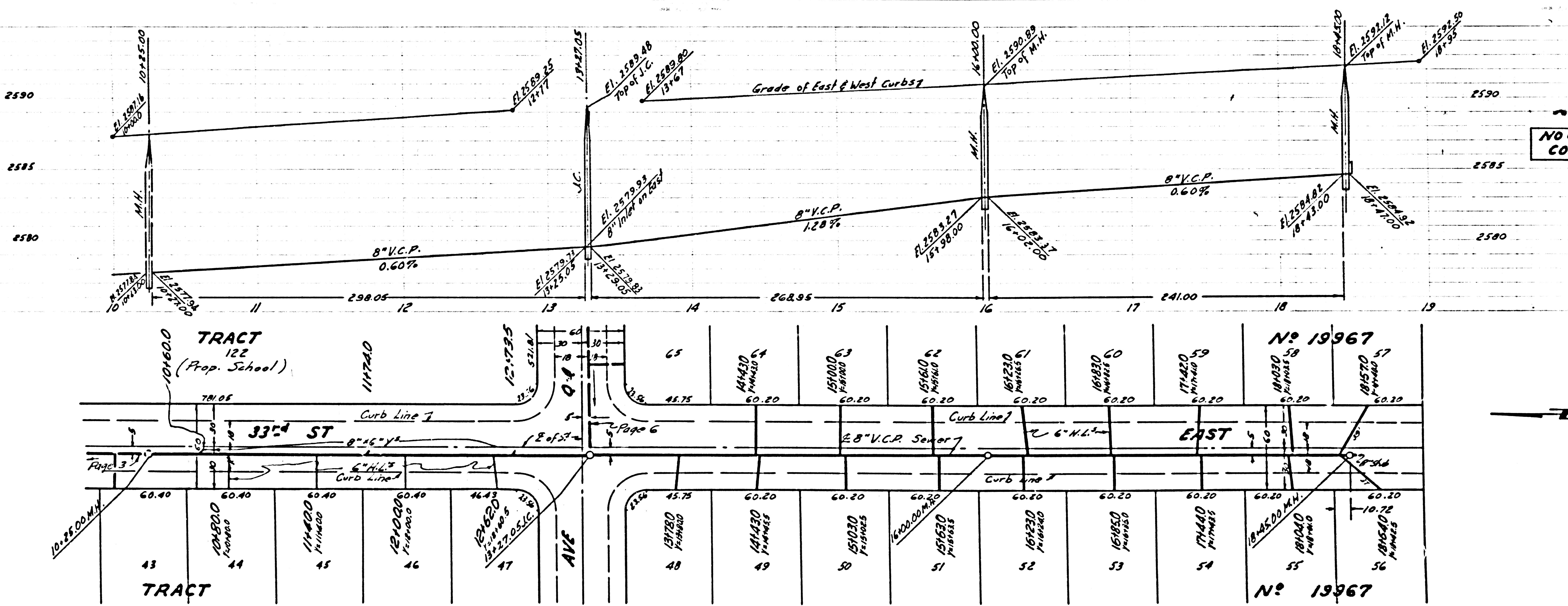
Checked by *[Signature]* 2-16-55
 Office of County Engineer, Reg. C. E. No. 7262

TRACT - N^o 19367 - P.C. 3414

Pal.

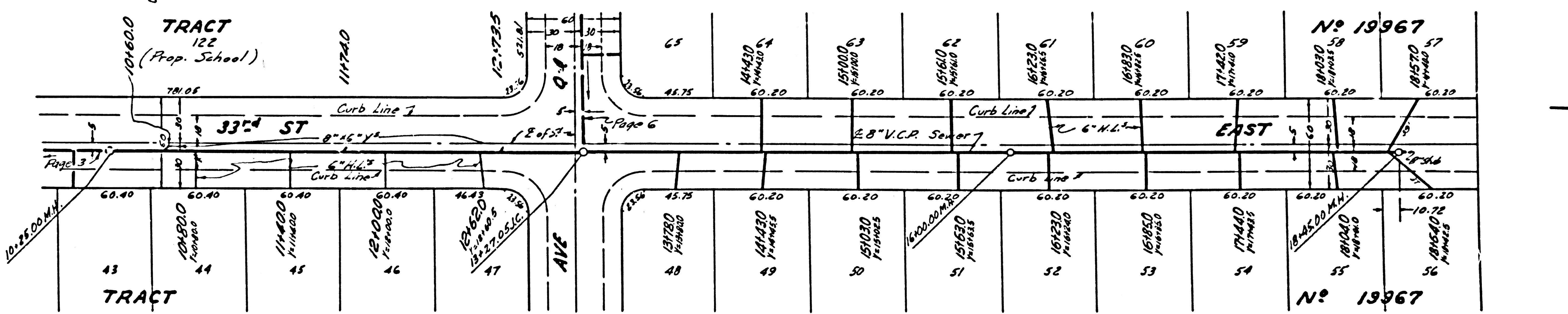
24,412

NO CHARGE FOR
CONNECTIONS



24,411

NO CHARGE FOR
CONNECTIONS



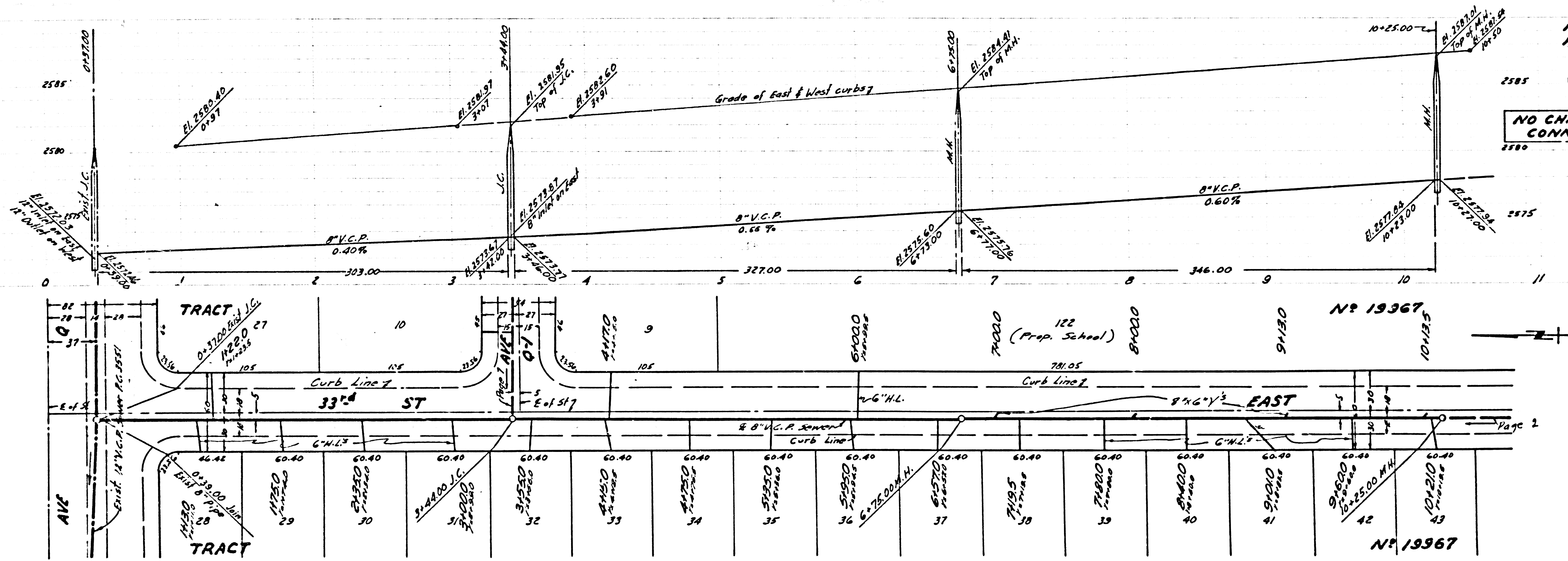
PC. 3414
Page 4

NO CHARGE FOR CONNECTIONS

PC. 3414
Page 3

24,412

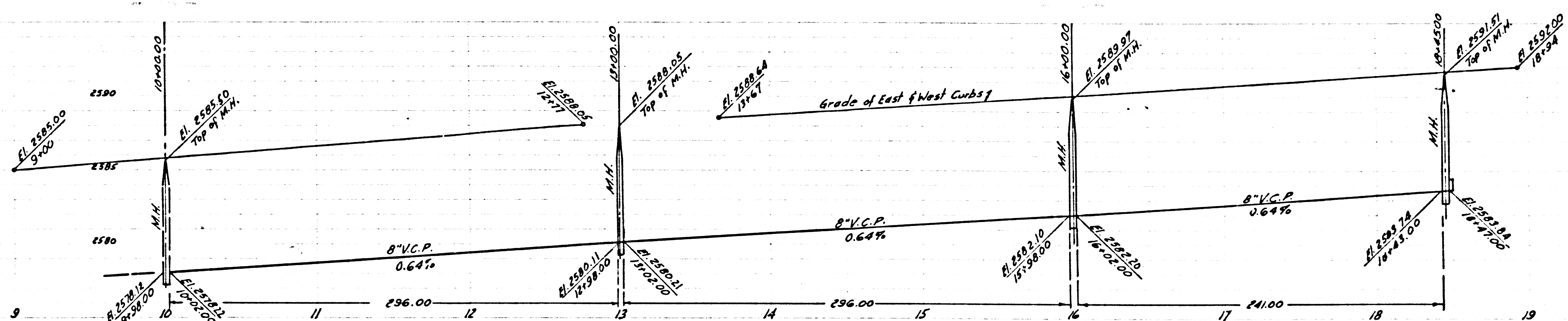
NO CHARGE FOR CONNECTIONS



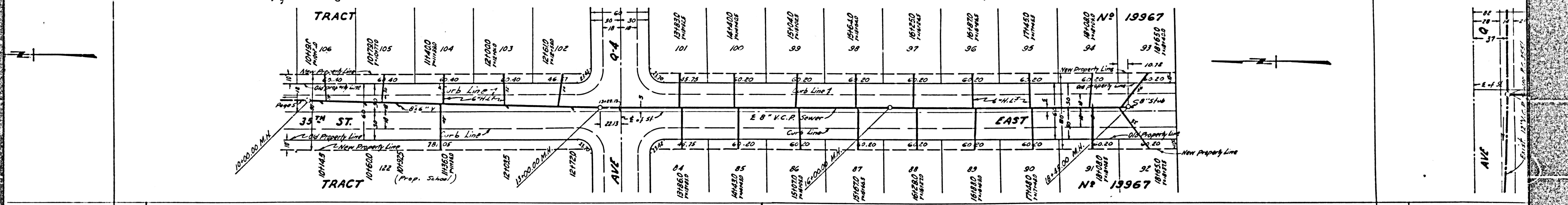
13

Page 2

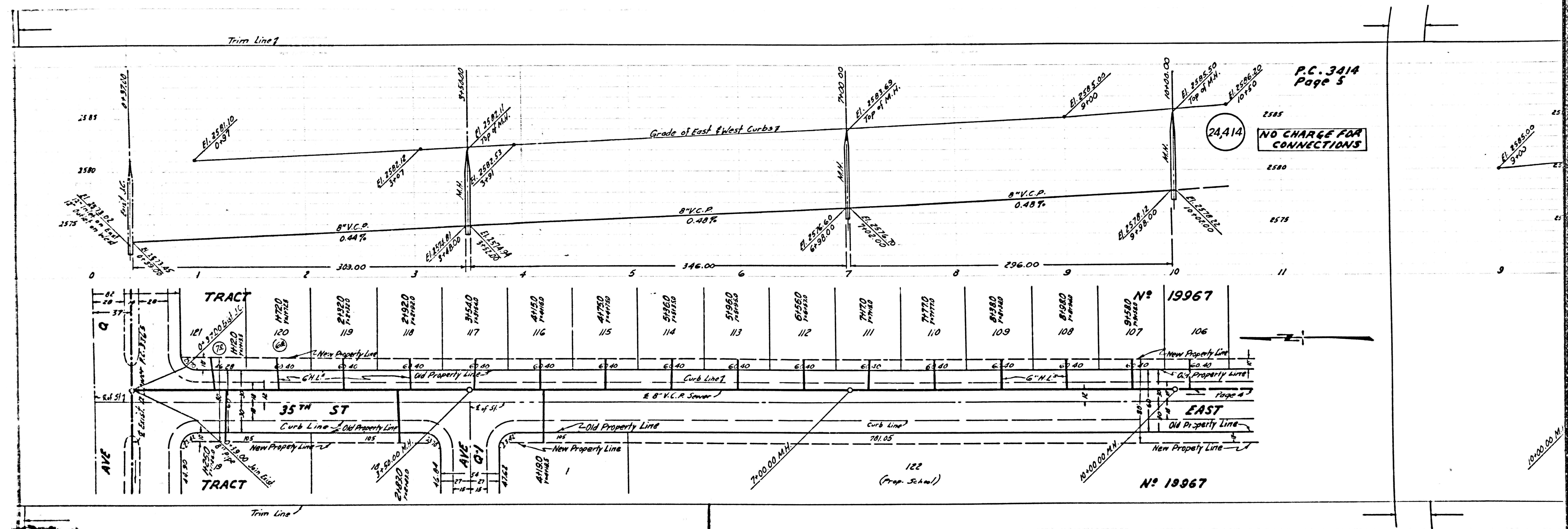
NO CHARGE FOR CONNECTIONS



24,413
NO CHARGE FOR CONNECTIONS



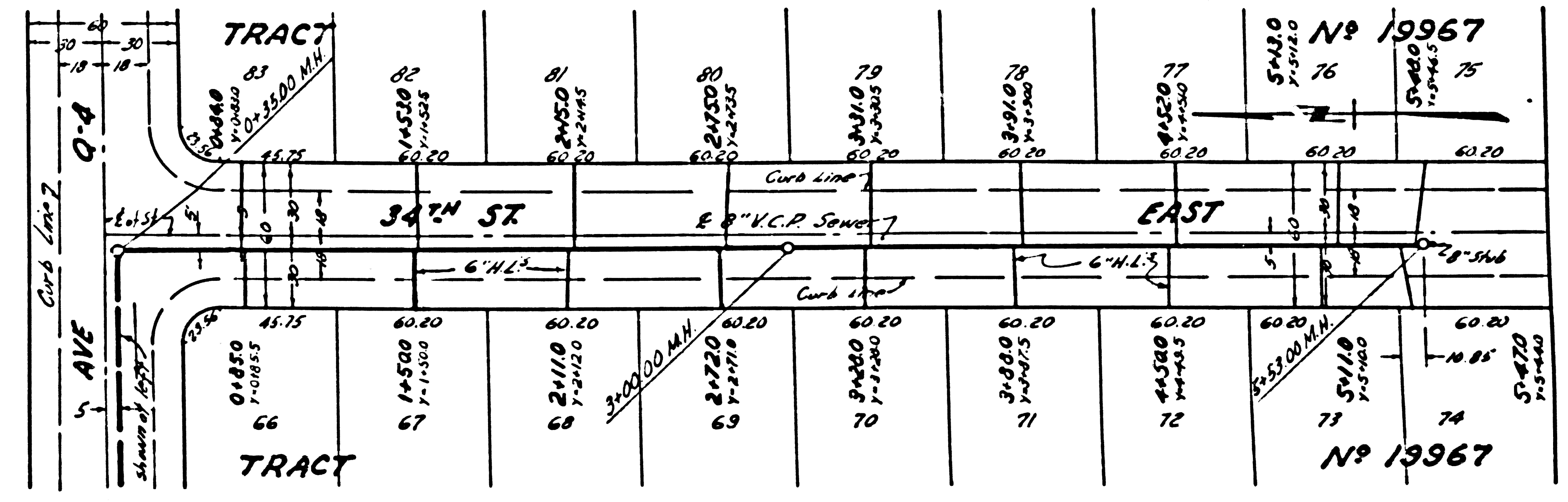
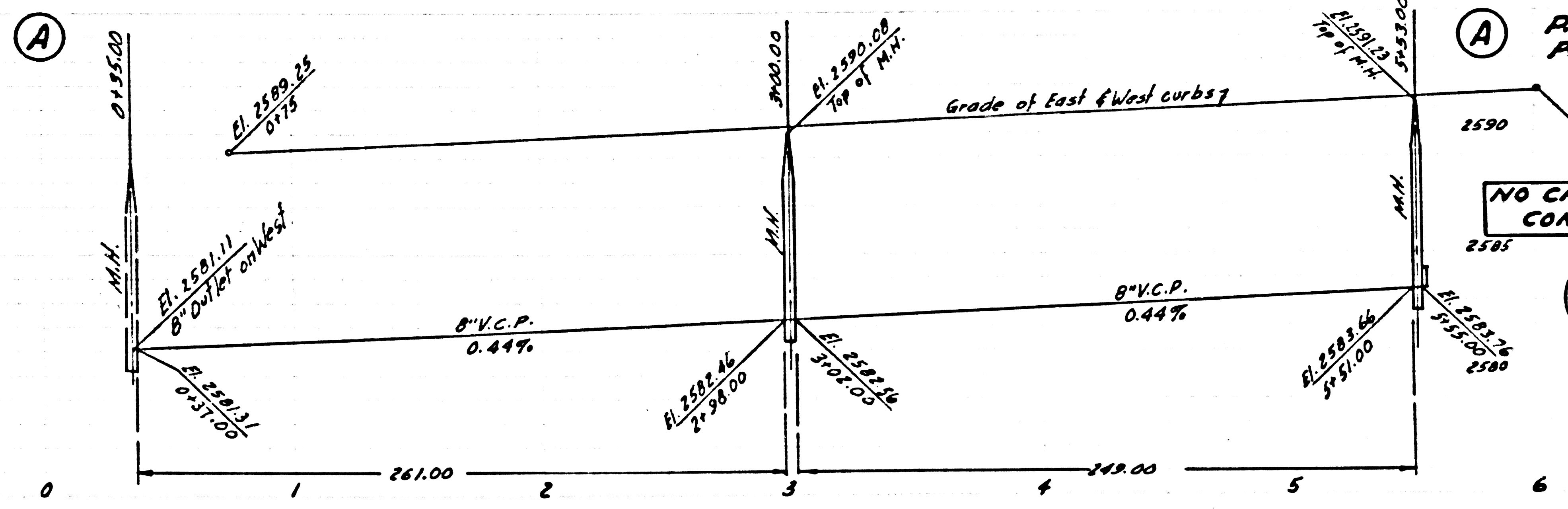
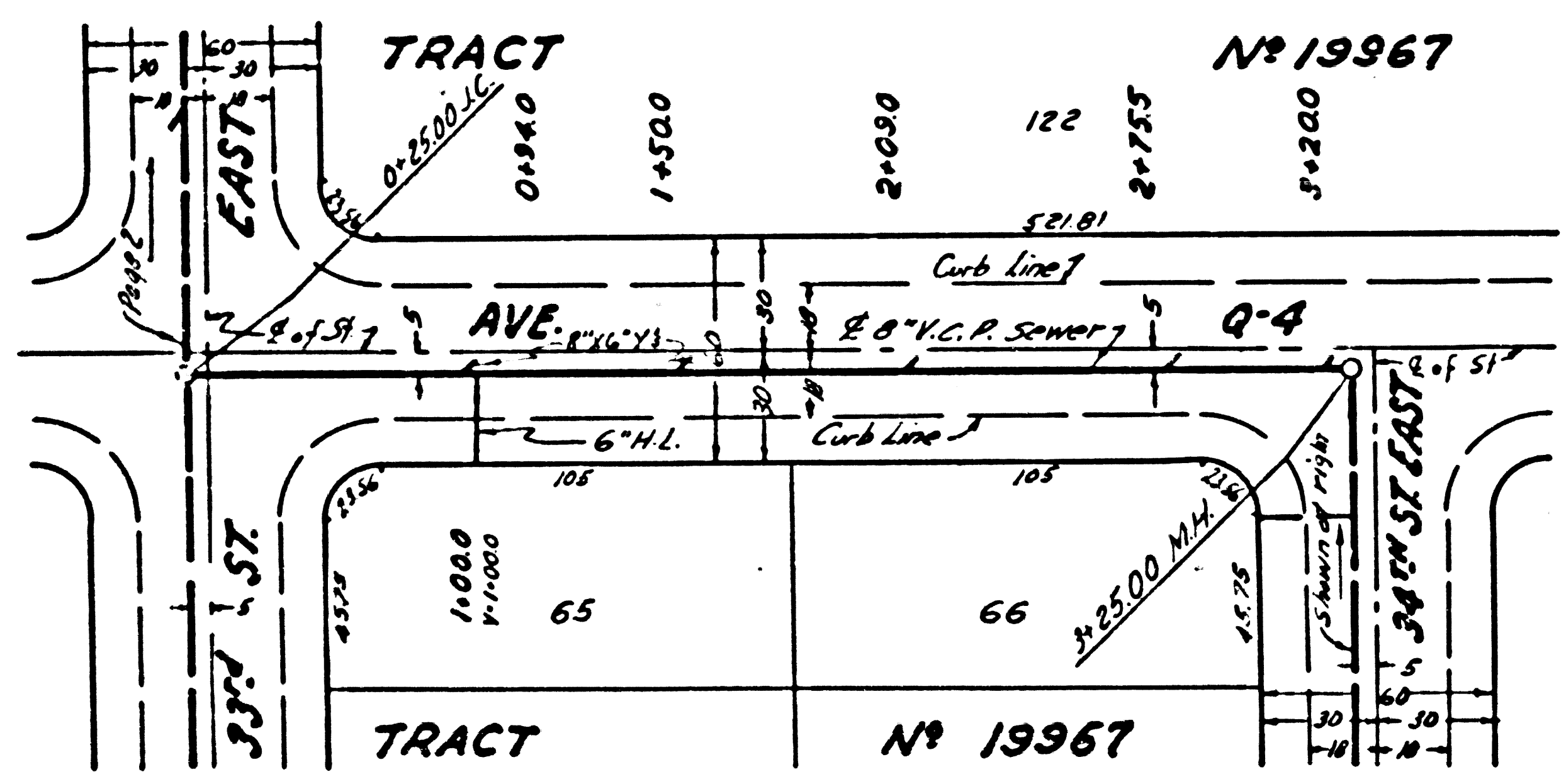
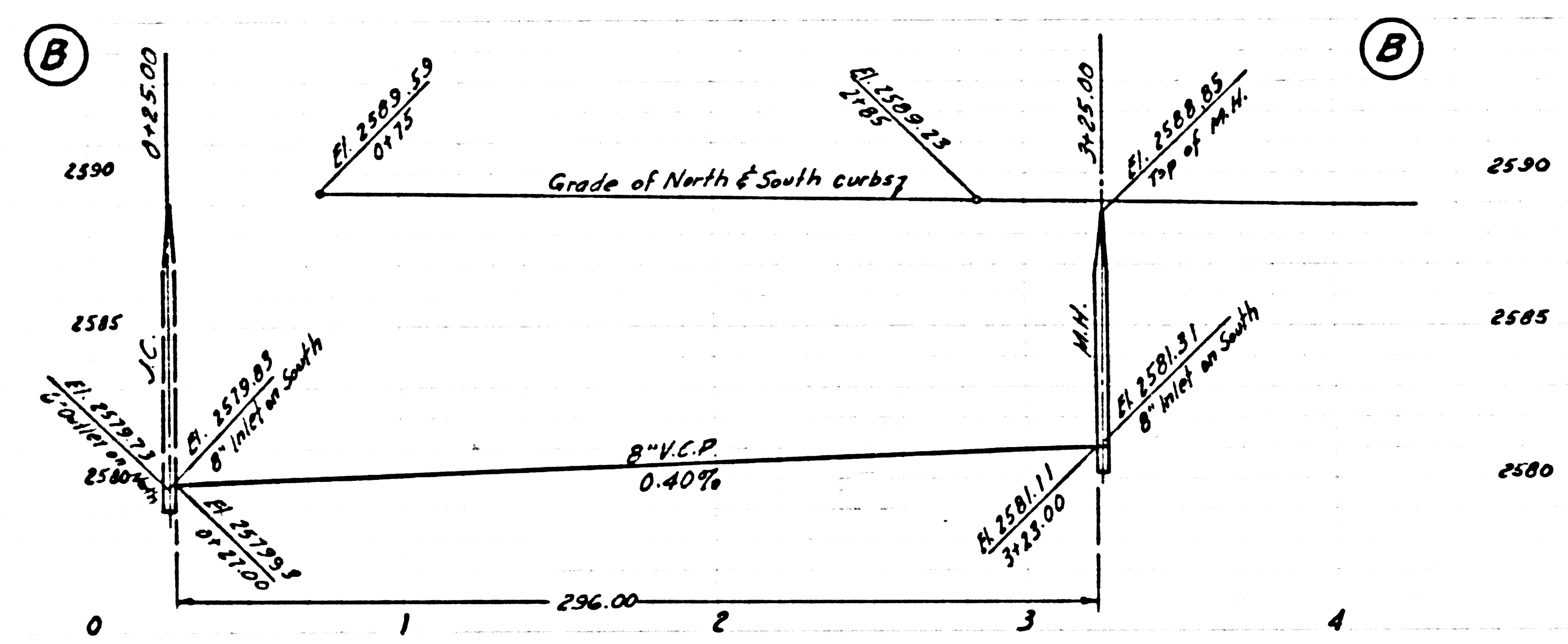
24.414
NO CHARGE FOR CONNECTIONS



P.C. 3414
Page 7

24,416

FOR
IONS



P.C. 3414
Page 6

24,415

NO CHARGE FOR
CONNECTIONS

RL

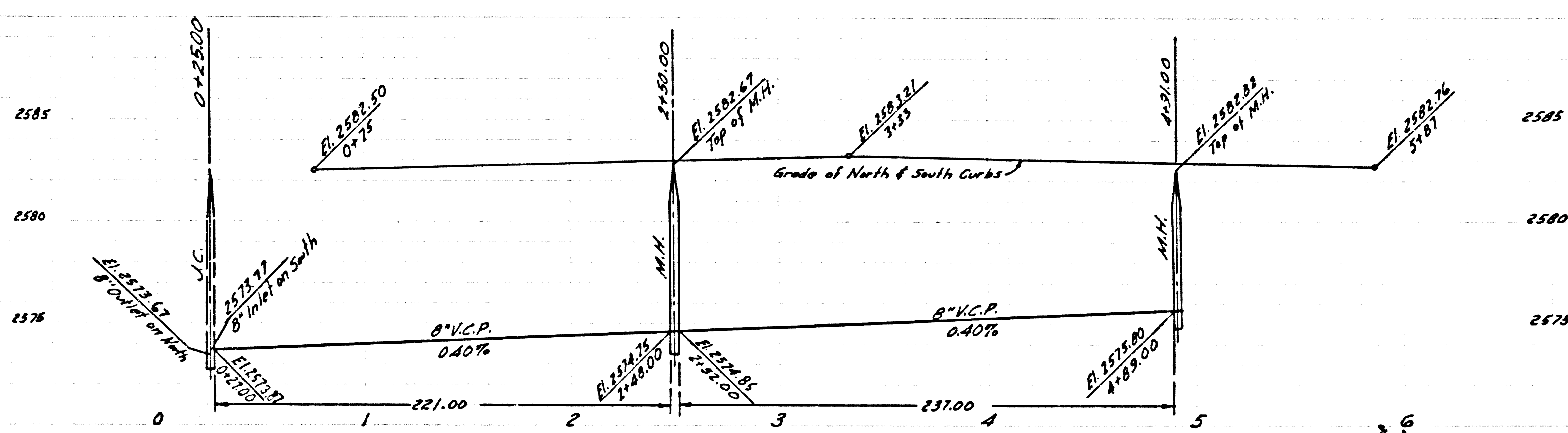
TRACT No 19967
P.C. 3414

CHARGE FOR
CONNECTIONS

24,417

to be obtained
from building office.

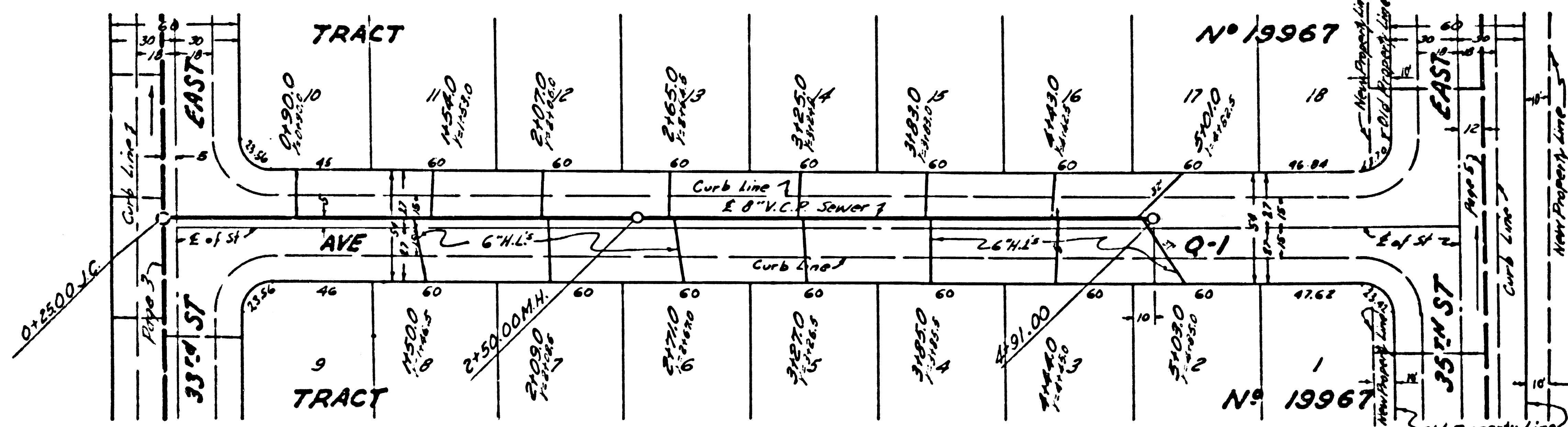
Trim Line 1



NO CHARGE FOR
CONNECTIONS

24,416

to be obtained
from building office.

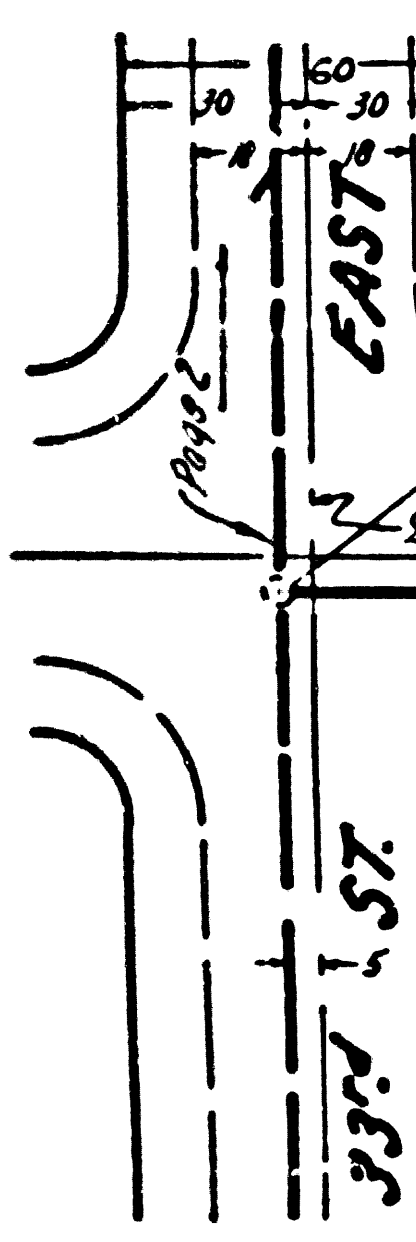


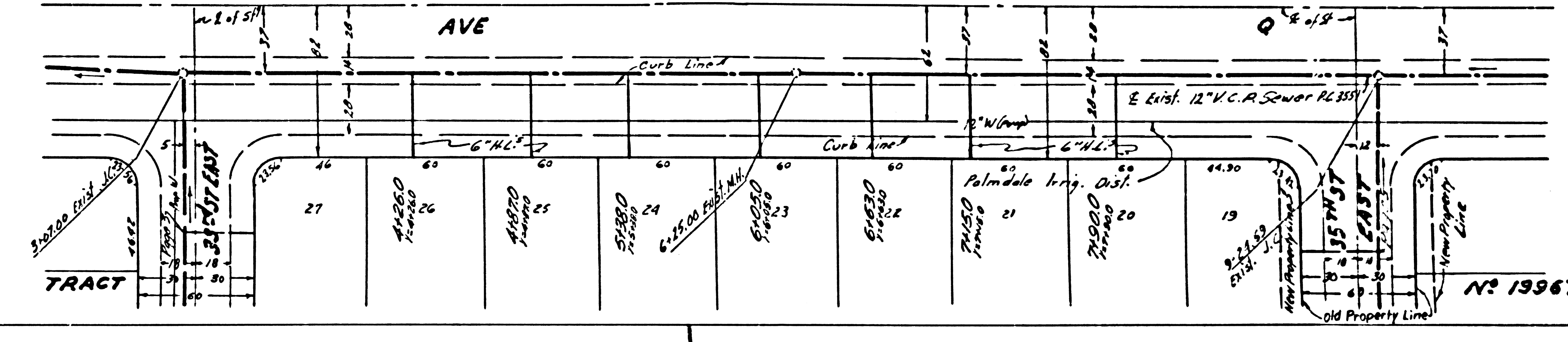
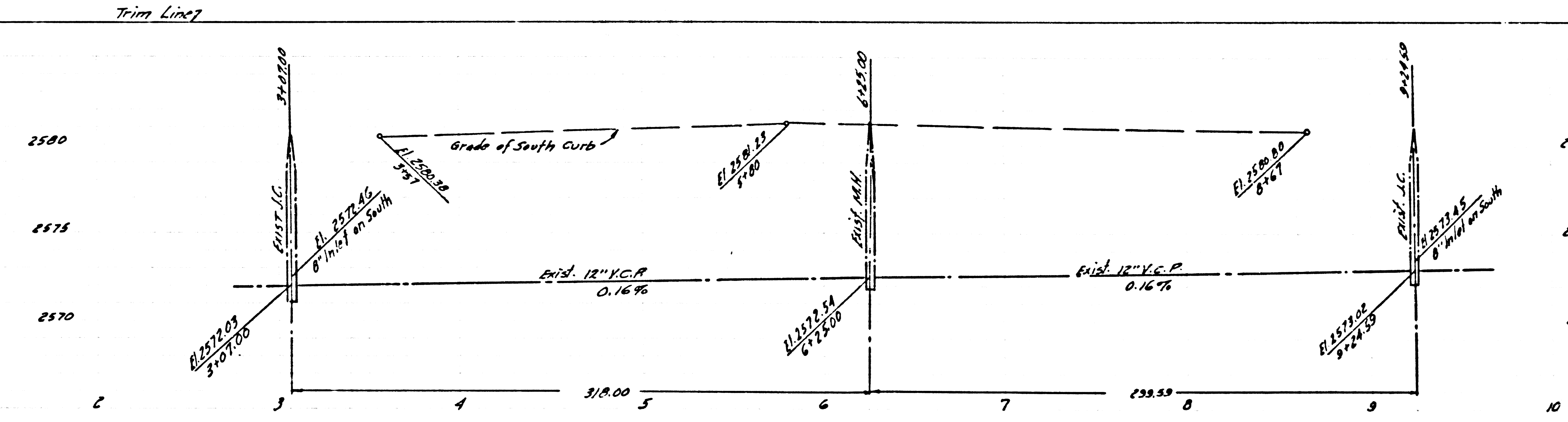
Trim Line

NO CHARGE FOR
CONNECTIONS

24,416

to be obtained
from building office.





P.C. 3414
Page 8

NO CHARGE FOR
CONNECTIONS

24,417

Note:
Y stationing to be obtained
from local building office.

No 19967