

Trim Line 2

Trim Line 2

### LENNOX BUILDING DISTRICT No. 7

**NOTE:**

Provide stakes on the property lines or property lines produced at right angles to the sewer line at the center line of each manhole.

No representative of the County Engineer will survey or layout any portion of the work.

The owner or his authorized representative shall furnish the County Engineer with grade sheets and stations for all house laterals and Y branches and shall provide stakes for them at their proper locations with stationing plainly marked. Any change in location shall be requested in writing by the owner or his representative.

No revisions shall be made in these plans without the approval of the County Engineer.

1. Use standard manhole frames and covers, S-a-117
2. Use standard strength pipe except as noted.
3. Use cement mortar for all vitrified clay pipe joints.
4. Resurface all trenches within paved area to meet L.A. County Road Dept or California State Highway Dept. requirements in accordance with permit.
5. Excuse four feet of sewer at points of interference with poles, S-a-119
6. House laterals to be constructed with inverts at property line 6 feet below curb grade except as noted.
7. All structures shall be brick sewer structures, S-a-104.
8. For allowable leakage test, use Formula No. 1, Specs. Sec. 51.
9. **DOUBLE SCALE.**
10. Figures in circles at ends of House Laterals indicate depth below curb grade of property line.

PROFILE, ALIGNMENT AND GRADE OF  
SANITARY SEWERS  
TO BE CONSTRUCTED IN

PC. 3415  
PAGE 1

TRACT No 17786

PRIVATE CONTRACT NO. 2415  
W. S. 24  
TWO SHEETS

Scale: VERT. 1" = 8'  
HORIZ. 1" = 40'

JAN 1955

PREPARED IN THE OFFICES OF  
LOS ANGELES INVESTMENT CO.

By: *E. H. Mowday*  
Reg. C. E. No. 1629

FOR LEGEND SEE PLAN NO. S-a-64

20,925

TRACT No 17786

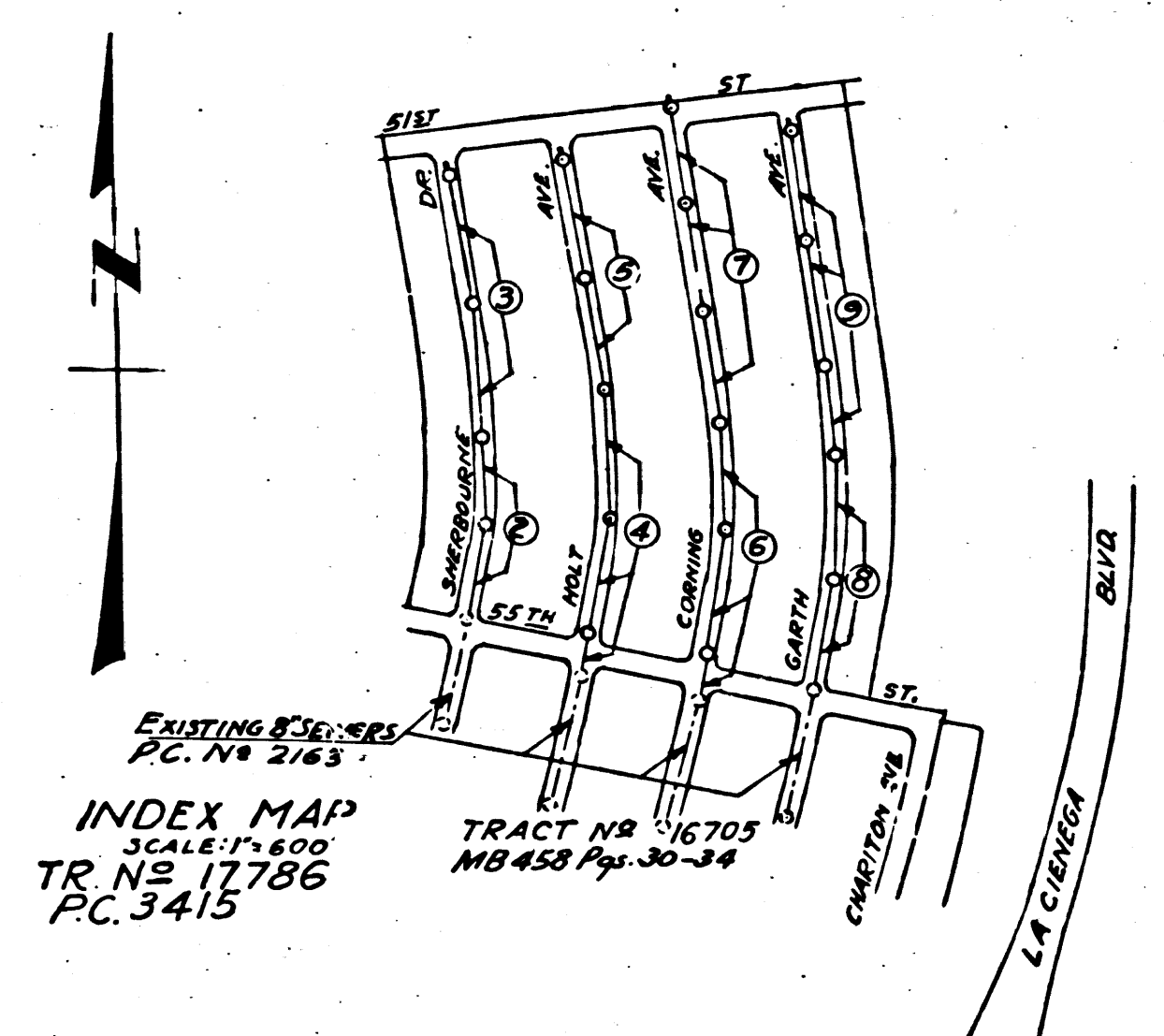
PC. 3415

L. Q. 754-359 B.M.A.M. Elev. 104.17 Bolt & Washer set in lead  
2 ft. W. of N.W. corner of N.E. corner of Youson Ave. to  
La. Genega Blvd. (S. B. 300 - W. L. A. I. Co.)

**NOTE:** Add 5.775 to bench mark and  
all elevations shown hereon to  
convert to U.S.G.S. elevations.  
Add 5.575 to all elevations shown hereon to  
agree with L.A. County Road Dept. B.M.'s  
(Stauson Ave. Circuit) shown as L.Q. 754-359

SHEET NO	PAGES
1	1-5
2	6-9

NO CHARGE  
FOR CONNECTIONS  
*Revised 5-4-55*



**NOTE:**

Grades to which this improvement is to be constructed are shown on plans and profiles. Grade points for top of curbs, center line of streets, or center line of alleys are shown by circles on profiles. At all points between designated points the grade shall be established so as to conform to a straight line drawn between said designated points.

Elevations are 5.775 ft. above U.S.G.S. datum or mean sea level. See note to left hereon.

This drawing and the data hereon are hereby made a part of the specifications.

Work shall be constructed according to specifications on file in the office of the County Engineer and shall be prosecuted only in the presence of the County Engineer.

Before work can be started, the contractor must obtain a permit to excavate in County streets from the L.A. County Road Dept., 109 W. 2nd St. and make a deposit with the County Engineer, Room 224, 223 South Broadway, sufficient to cover the cost of construction inspection and record plans.

Approval of this plan by the County of Los Angeles does not constitute a representation as to the accuracy of the location of or the existence or non-existence of any underground utility, pipe, or structure within the limits of this project. This note applies to all sheets.

If work is to be done in a State Highway, a permit must be obtained from the State of California, Division of Highways, 120 South Spring Street.

COUNTY OF LOS ANGELES, CALIFORNIA

Approved, William J. Fox, County Engineer

Approved A. M. Rawn  
CHIEF ENGR.-CO. SAN. DIST. NO. 5

By: *A. P. Collins* Sanitation Engineer

By: *M. H. ...* Office Engineer

Checked By: *R. H. ...* 5-4-55  
Office of County Engineer Reg. C. E. No. 7860

15

0,926

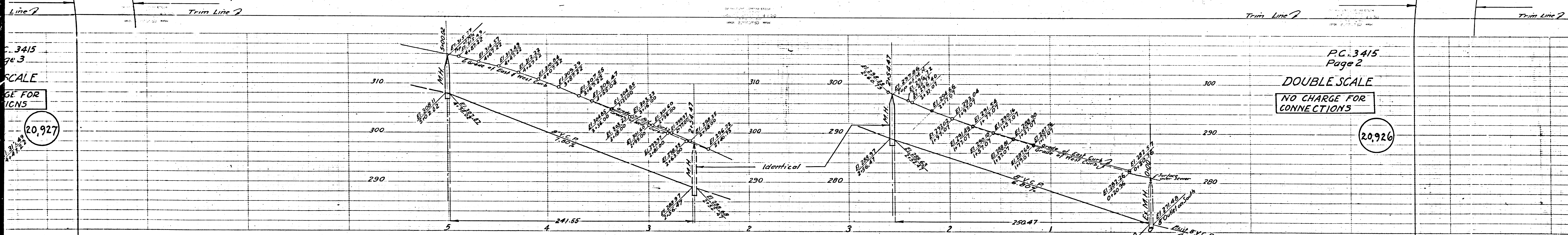
Page Trim Line

Trim Line

Trim Line

R.H.

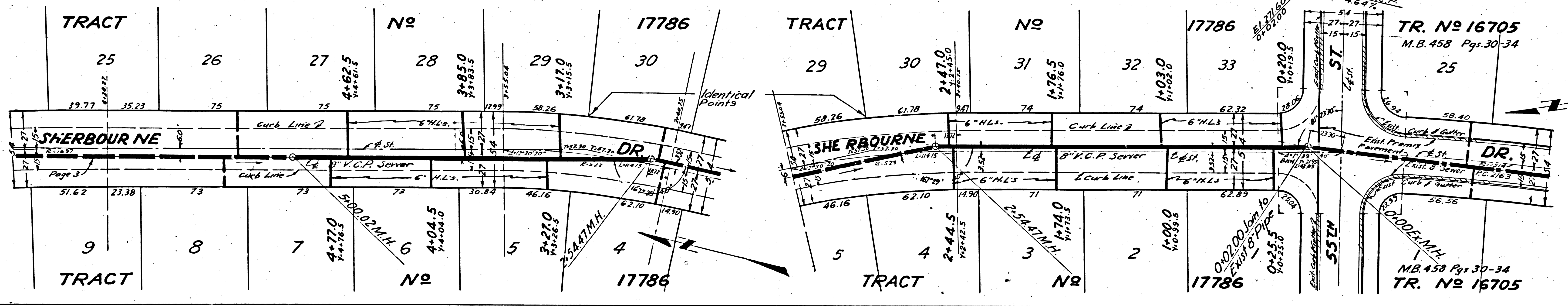




PC 3415  
Page 2  
DOUBLE SCALE  
NO CHARGE FOR  
CONNECTIONS

20,927

20,926



Page Trim Line

Page Trim Line



P.C. 3415  
Page 4

280 DOUBLE SCALE

NO CHARGE FOR CONNECTIONS

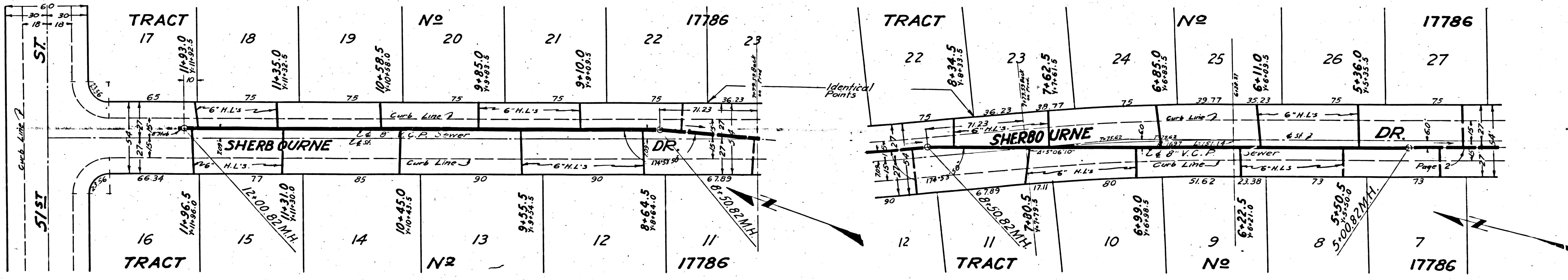
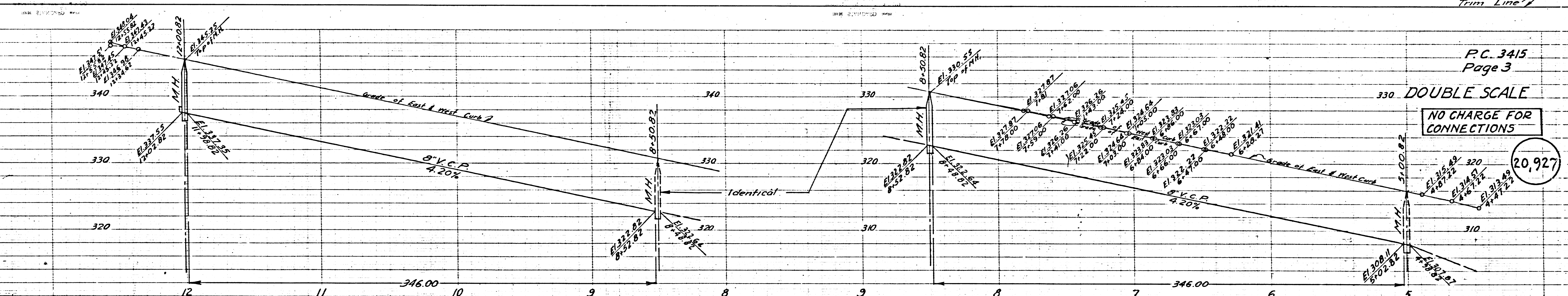
20,928

P.C. 3415  
Page 3

330 DOUBLE SCALE

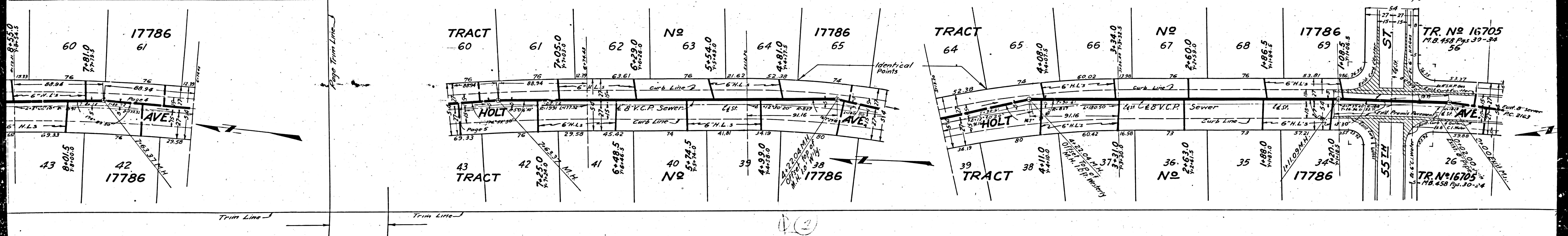
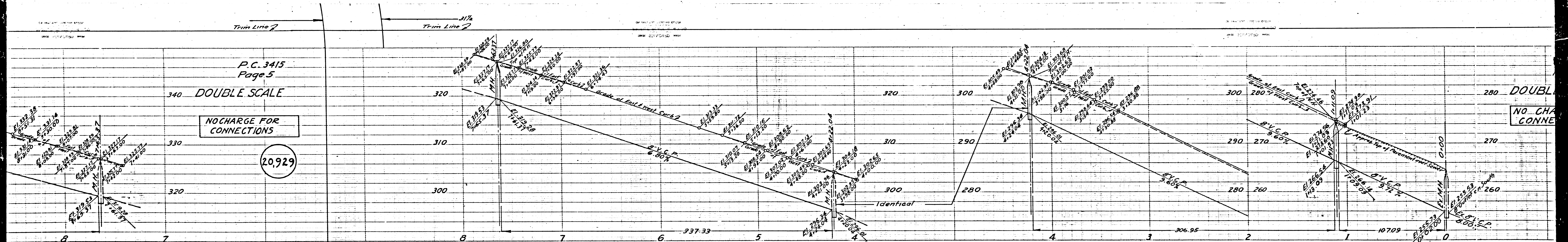
NO CHARGE FOR CONNECTIONS

20,927



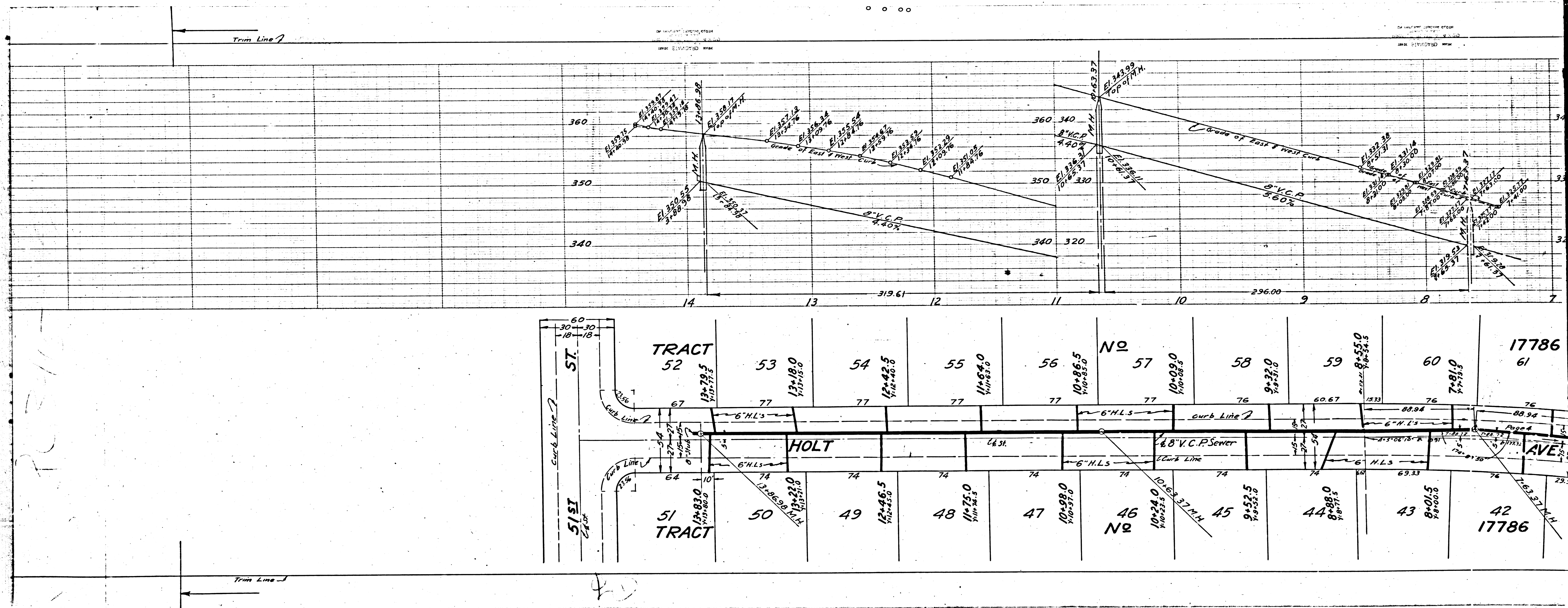


P.C. 3415  
Page 5  
DOUBLE SCALE  
NO CHARGE FOR CONNECTIONS  
20,929



10







PC 3415  
Page 7  
SCALE  
PAGE FOR  
CONNECTIONS

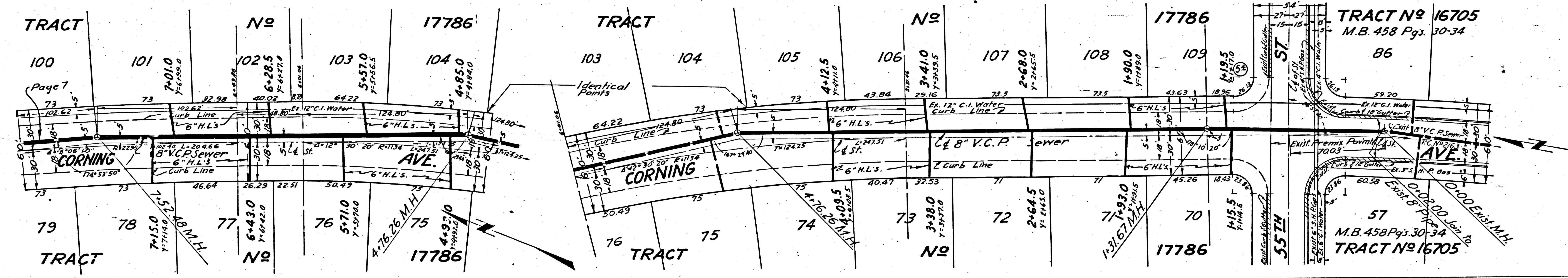
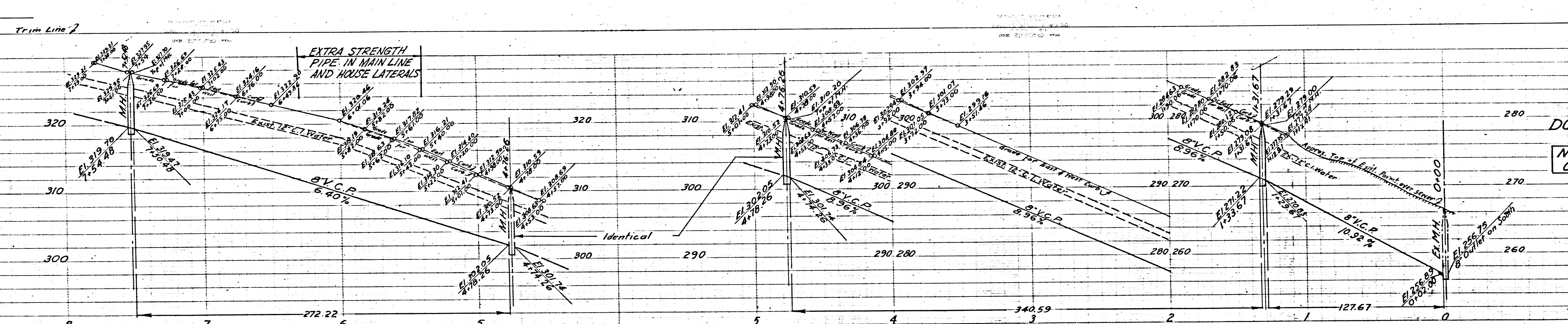
20,931

PC 3415  
PAGE 6  
DOUBLE SCALE  
NO CHARGE FOR  
CONNECTIONS

20,930

TRACT No 17786

PC 3415  
PAGE 29



Red.



P.C. 3415  
Page 8

DOUBLE SCALE

NO CHARGE FOR  
CONNECTIONS

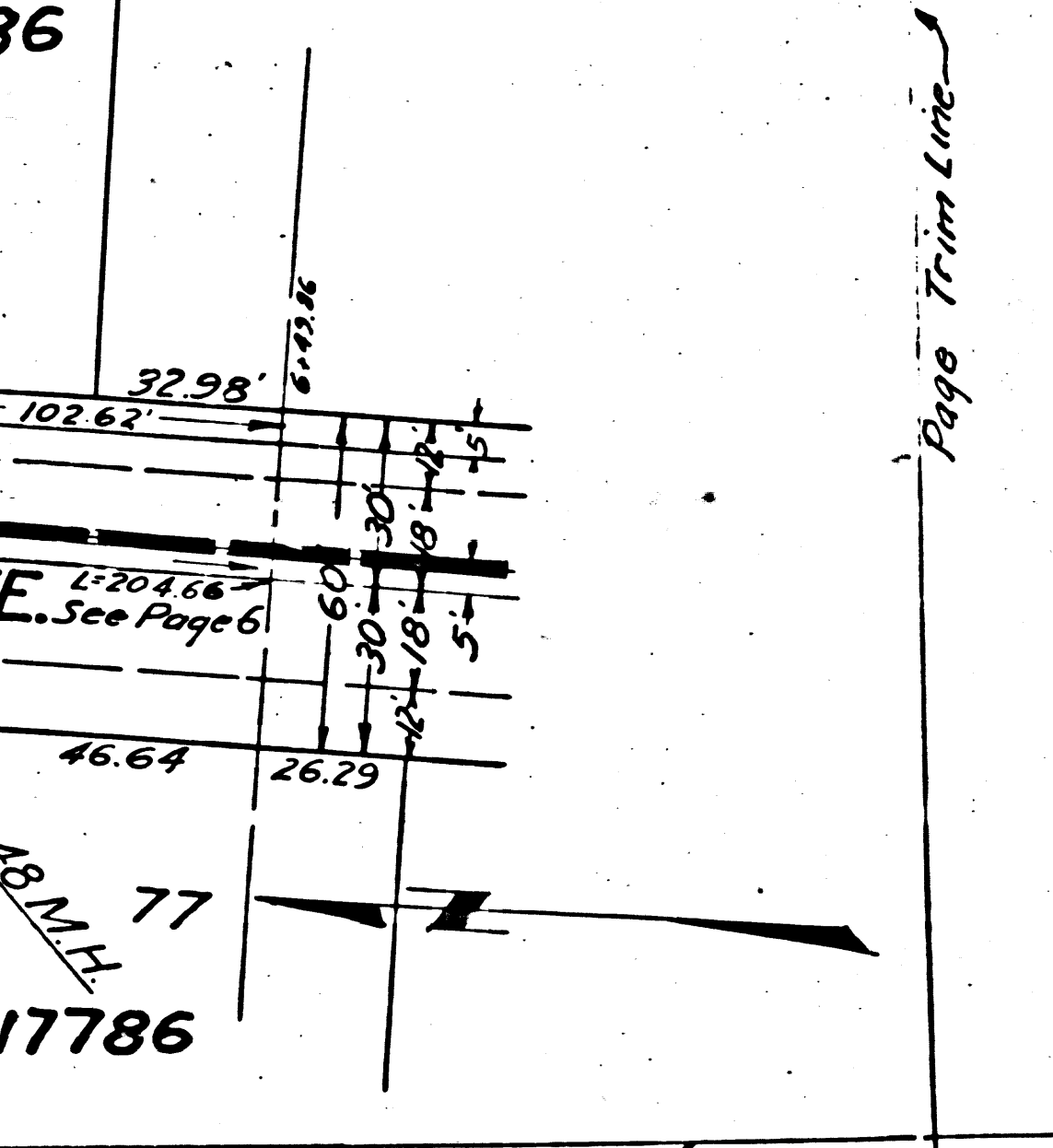
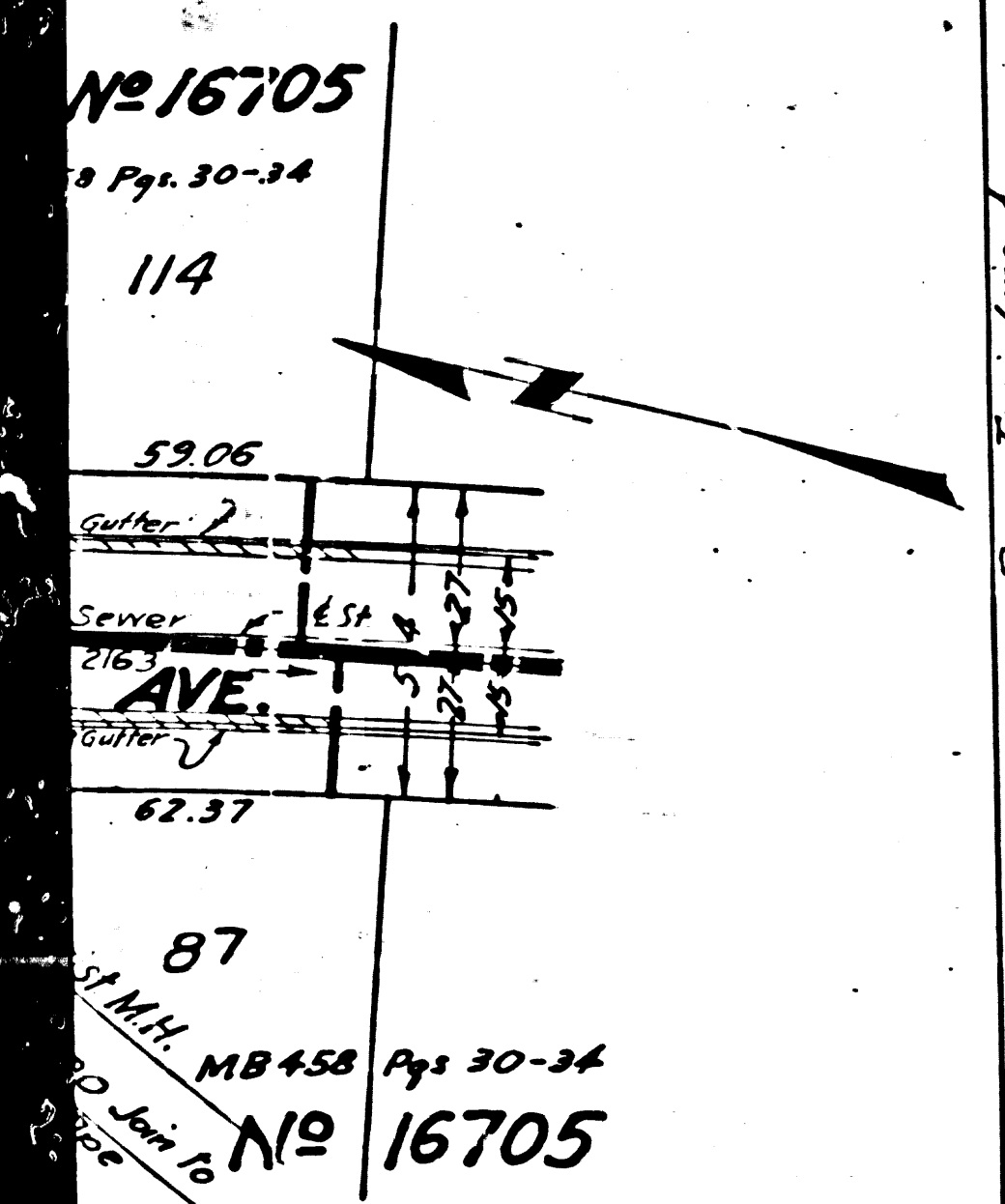
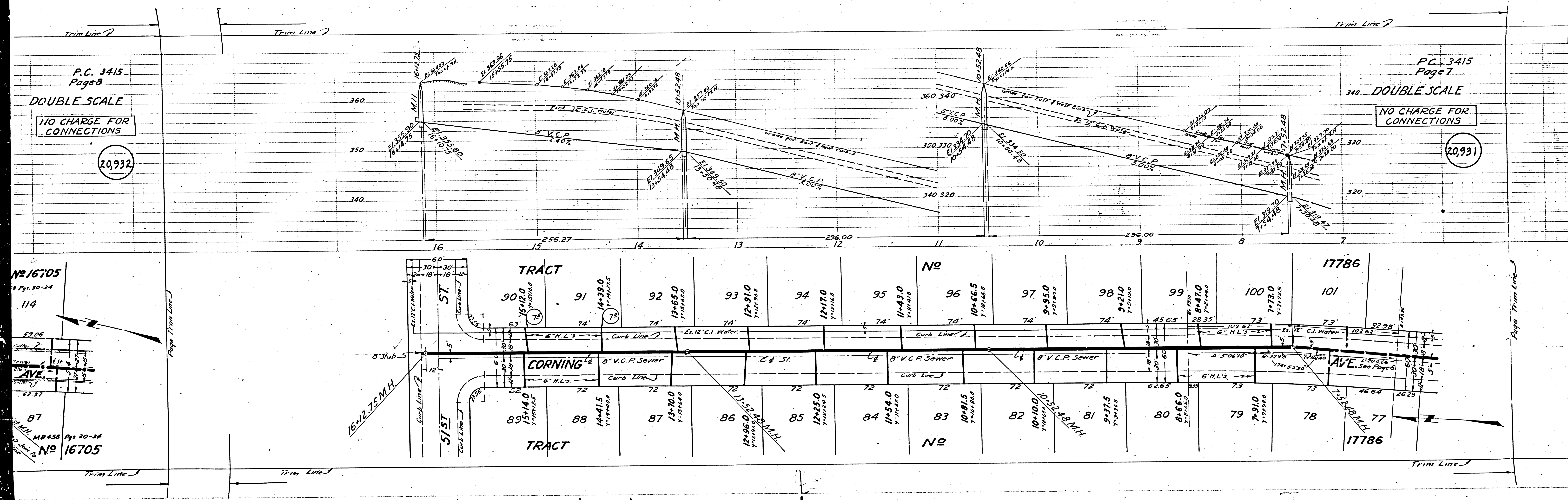
20,932

P.C. 3415  
Page 7

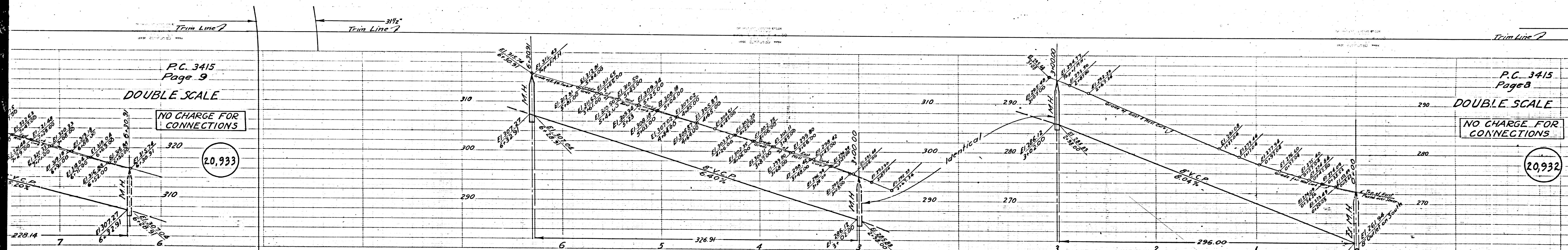
DOUBLE SCALE

NO CHARGE FOR  
CONNECTIONS

20,931







P.C. 3415  
Page 9  
DOUBLE SCALE

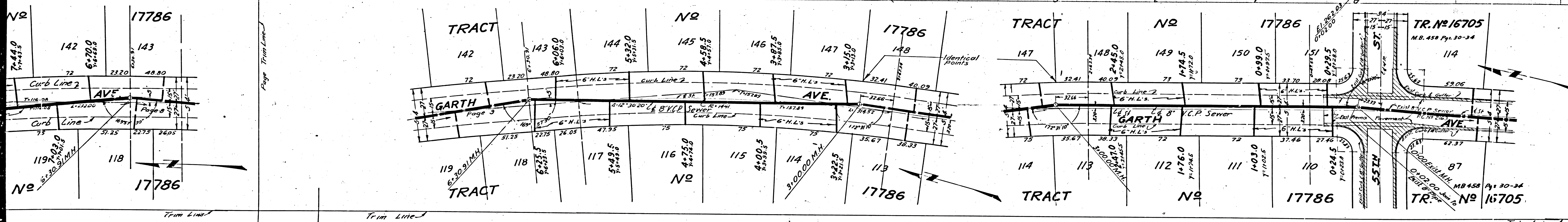
NO CHARGE FOR CONNECTIONS

20,933

P.C. 3415  
Page 8  
DOUBLE SCALE

NO CHARGE FOR CONNECTIONS

20,932



17786

17786

17786

TR. No 16705

M.B. 458 Pgs. 30-34

114

59.06

TR. No 16705

M.B. 458 Pgs. 30-34

87

0+00.00

TR. No 16705

17786

17786

17786

TR. No 16705

M.B. 458 Pgs. 30-34

114

59.06

TR. No 16705

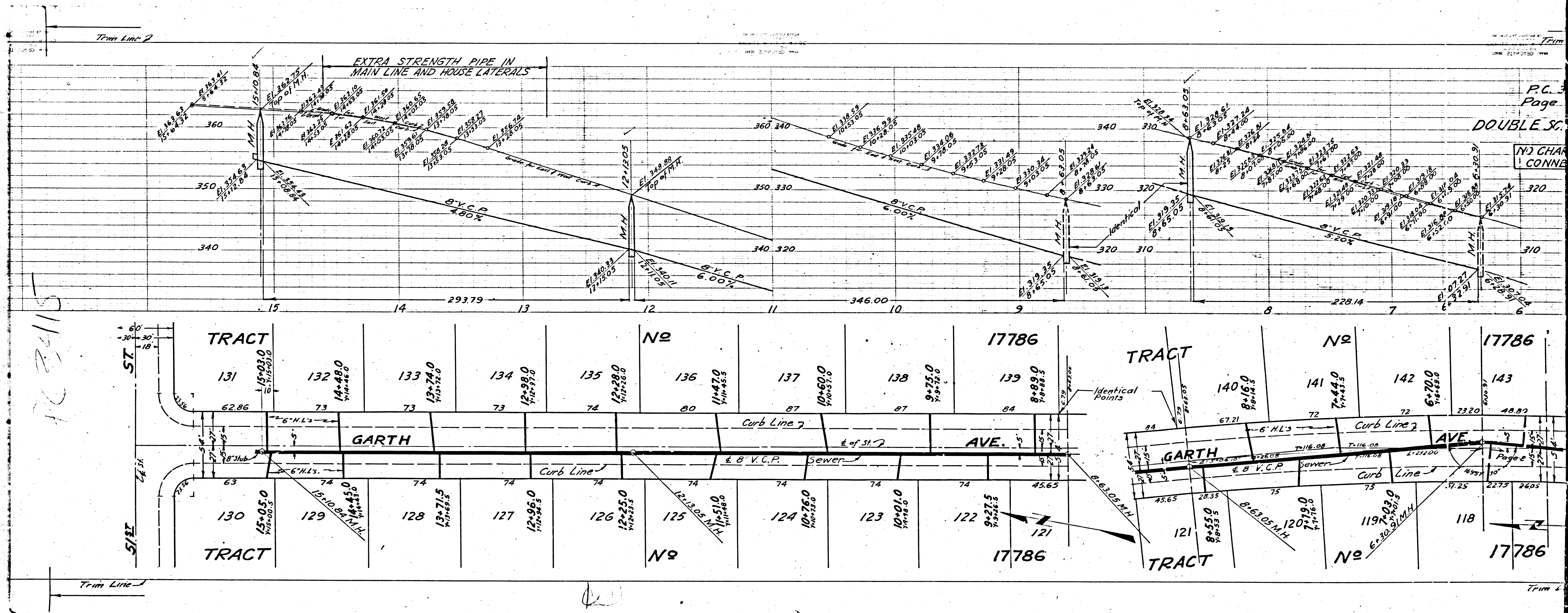
M.B. 458 Pgs. 30-34

87

0+00.00

TR. No 16705





103415

Lot No.	Area (sq. ft.)	Area (sq. ft.)	Area (sq. ft.)	Area (sq. ft.)	Area (sq. ft.)	Area (sq. ft.)	Area (sq. ft.)	Area (sq. ft.)	Area (sq. ft.)	Area (sq. ft.)	Area (sq. ft.)	Area (sq. ft.)	Area (sq. ft.)	Area (sq. ft.)	Area (sq. ft.)		
131	15,030.0	132	14,480.0	133	13,740.0	134	12,910.0	135	12,280.0	136	11,470.0	137	10,800.0	138	9,750.0		
130	15,050.0	129	13,100.0	128	13,715.0	127	12,965.0	126	12,250.0	125	11,510.0	124	10,760.0	123	10,010.0	122	9,215.0
140	8,160.0	141	7,440.0	142	6,700.0	143	6,000.0	144	5,300.0	145	4,600.0	146	3,900.0	147	3,200.0	148	2,500.0