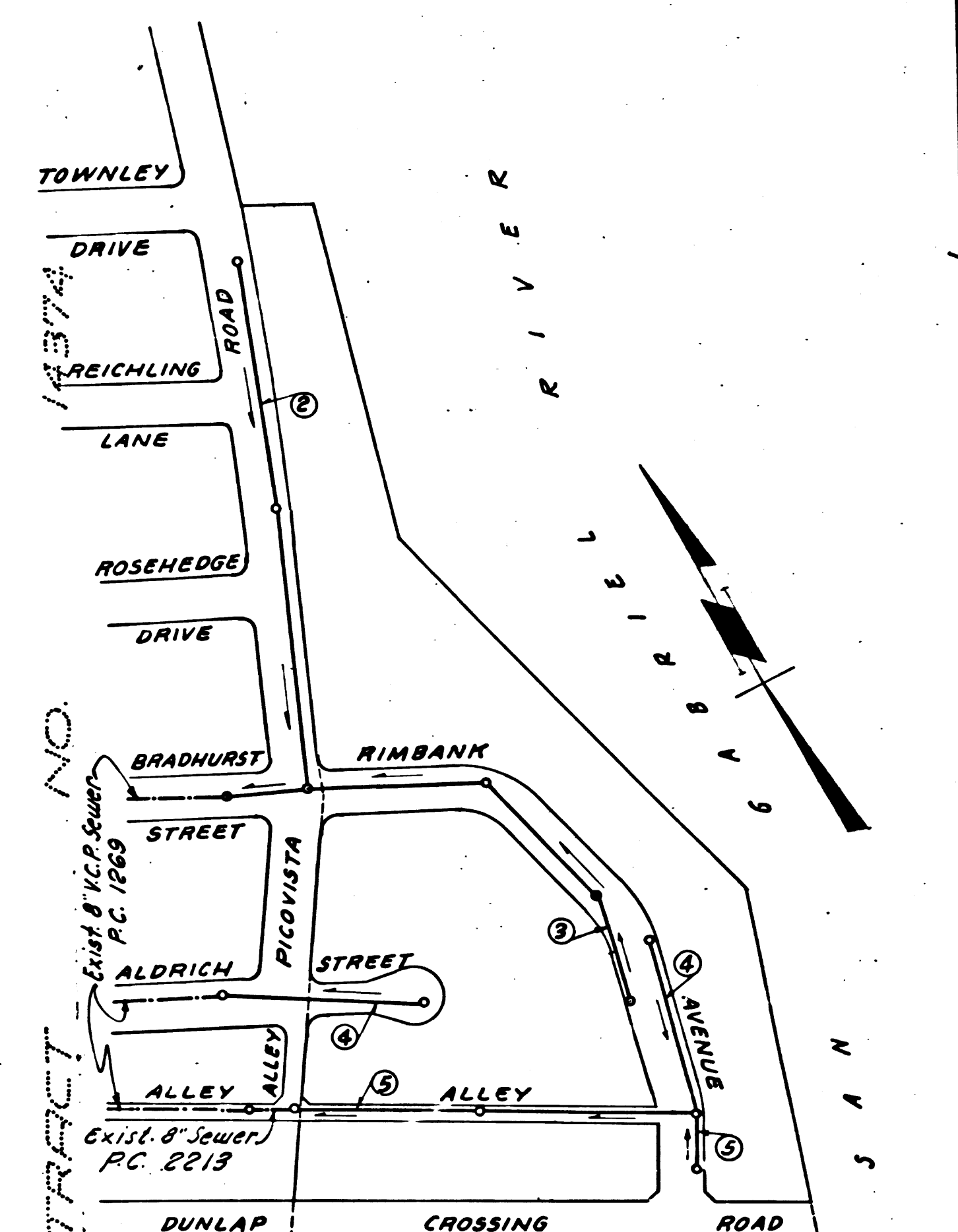


WHITTIER BLDG. DIST. NO. 11

NOTE:
 Provide stakes on the property lines or property lines produced at right angles to the sewer line at the center line of each manhole.
 No representative of the County Engineer will survey or layout any portion of the work.
 The owner or his authorized representative shall furnish the County Engineer with grade sheets and stations for all house laterals and Y branches and shall provide stakes for them at their proper locations with stationing plainly marked. Any change in location shall be requested in writing by the owner or his representative.
 No revisions shall be made in these plans without the approval of the County Engineer.

1. Use standard manhole frames and covers, S-a-117, *Except as noted.*
2. Use standard strength pipe except as noted.
3. Use cement mortar for all vitrified clay pipe joints.
4. Resurface all trench within paved area to meet L.A. County Road Dept. or California State Highway Dept. requirements in accordance with permit.
5. Encase four feet of sewer at points of interference with poles, S-a-119.
6. House laterals to be constructed with a 1/4" rise per ft. to property line.
7. All structures shall be brick sewer structures, S-a-104, *Except as noted.*
8. For allowable leakage test, use Formula No. 1, Specs., Sec. 51.
9. Manhole tops in unimproved Rights-Of-Way to be 6" above finish grade.



B.M. S.Y. 2879 Fd. L.T. in North curb Dunlap Crossing Road 15' West of East End of curb in front of House No. 5607 formerly No. 3585 ELEV. 158.603

SHEET NO.	PAGES
1	1-5

NO CHARGE FOR CONNECTIONS
 L. Lester 6-6-55

INDEX MAP
 SCALE: 1/200' P.C. 3421
 TRACT NO. 20527

Checked 1-5-56 [Signature]

PROFILE, ALIGNMENT AND GRADE OF
 SANITARY SEWERS
 TO BE CONSTRUCTED IN

TRACT No. 20527

PRIVATE CONTRACT NO. 3421
 W. S. 36

SHEET 1 OF 1 SHEET
 Scale: VERT. 1" = 40' HORIZ. 1" = 40' MAR-1955
 PREPARED IN THE OFFICES OF

KEMMERER ENGINEERING CO. INC.
 Hans C. Kemmerer Reg. C. E. No. 8244

FOR LEGEND SEE PLAN NO. S-a-64

NOTE:
 Grades to which this improvement is to be constructed are shown on plans and profiles. Grade points for top of curbs, center line of streets, or center line of alleys are shown by circles on profiles. At all points between designated points the grade shall be established so as to conform to a straight line drawn between said designated points.
 Elevations are in feet above U.S.G.S. datum or mean sea level.
 This drawing and the data herein are hereby made a part of the specifications.
 Work shall be constructed according to specifications on file in the office of the County Engineer and shall be prosecuted only in the presence of the County Engineer.
 Before work can be started, the contractor must obtain a permit to excavate in County streets from the L.A. County Road Dept., 108 W. 2nd St. and make a deposit with the County Engineer, 233 S. Broadway St. Room 324 sufficient to cover the cost of construction inspection and record plans.
 Approval of this plan by the County of Los Angeles does not constitute a representation as to the accuracy of the location or the existence or non-existence of any underground utility, pipe, or structure within the limits of this project. This note applies to all sheets.
 If work is to be done in a State Highway, a permit must be obtained from the State of California, Division of Highways, 120 South Spring Street.

COUNTY OF LOS ANGELES, CALIFORNIA
 Approved, William J. Fox, County Engineer Approved, A. M. Rawm
 CHIEF ENGR. CO. SAN. DIST. NO. 2
 [Signatures]
 Sanitation Engineer Office Engineer
 Checked By: [Signature] 6-7-55
 Office of County Engineer, Reg. C. E. No. 3406

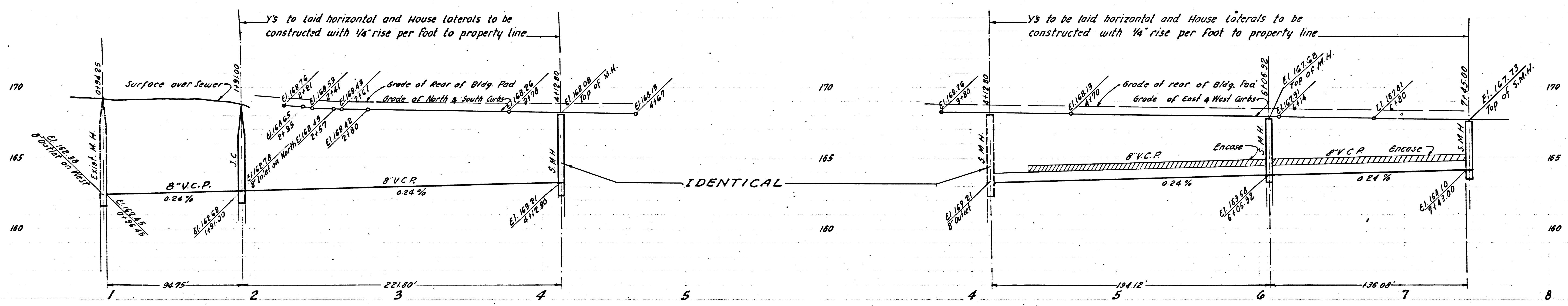
PAGE 1
 P.C. 3421
 22,024

TRACT No. 20527

EO 59-1 5105A

P.C. 3421

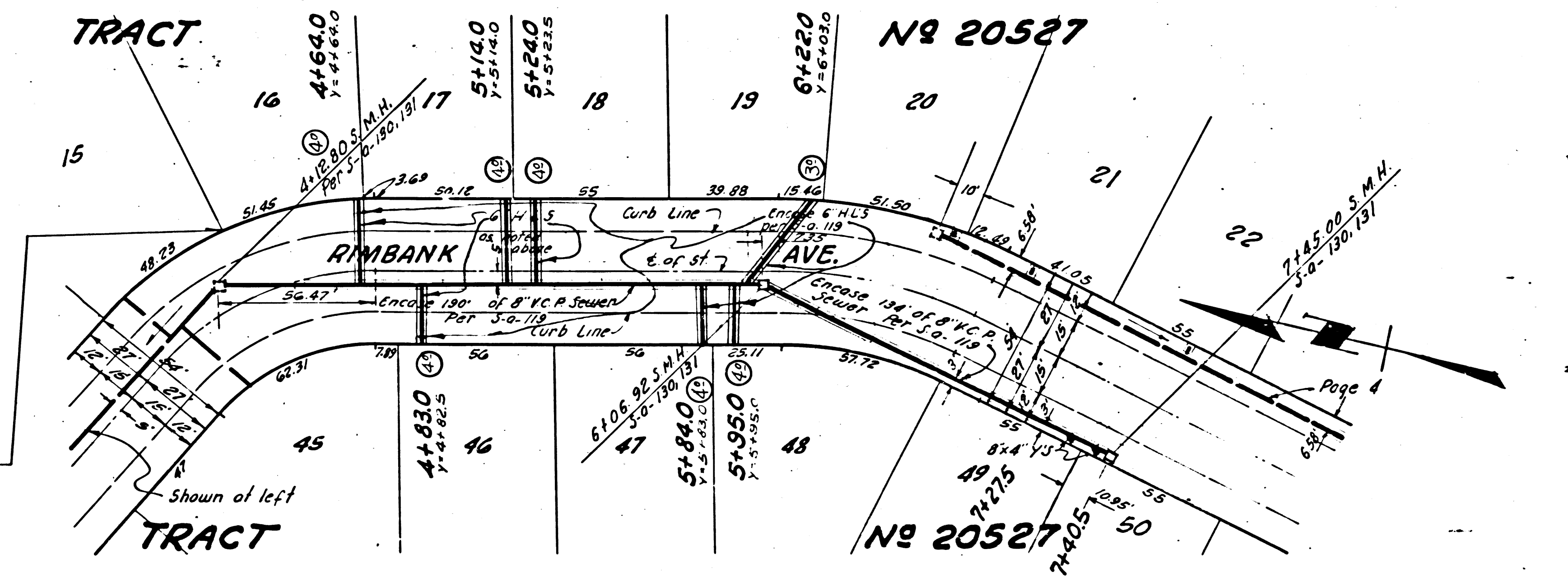
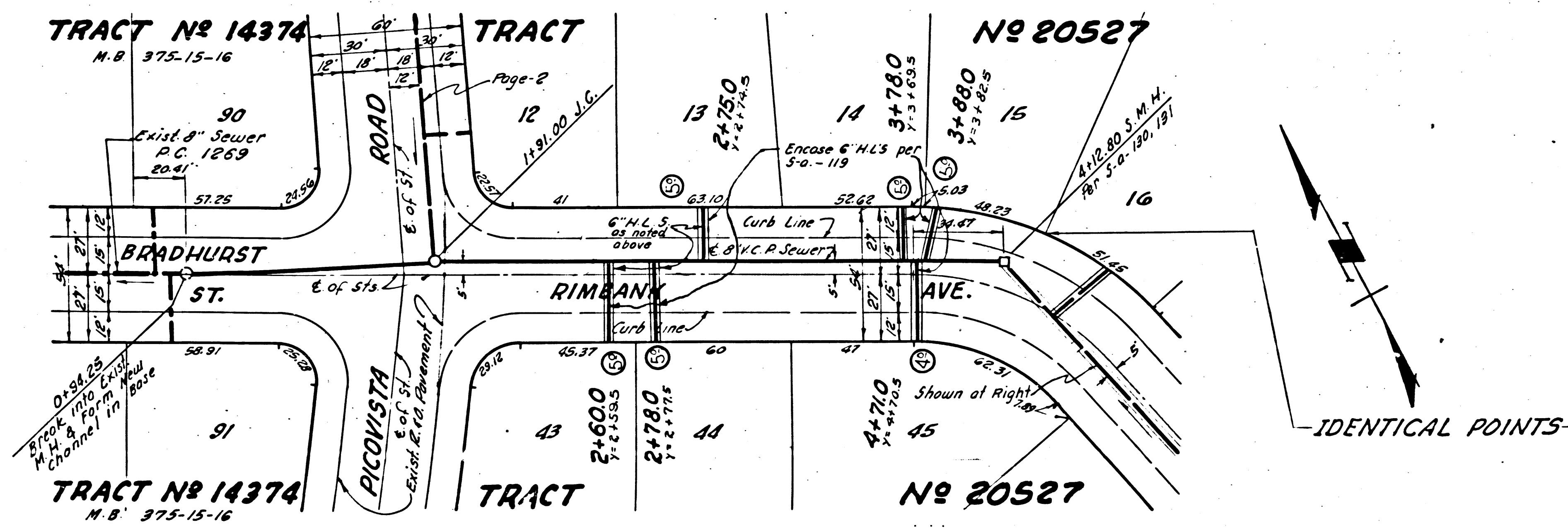
PRB



PAGE 3
P.C. 3421

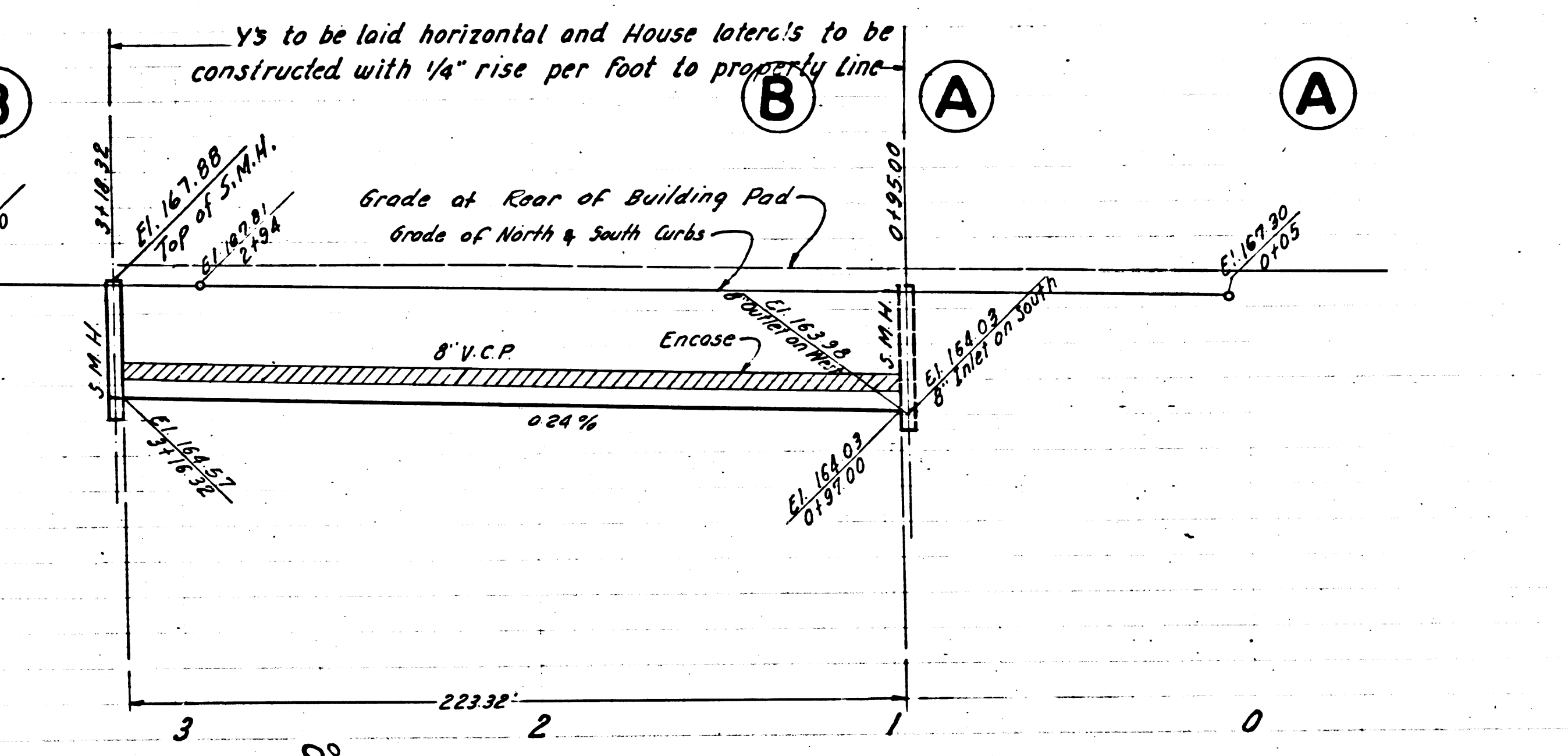
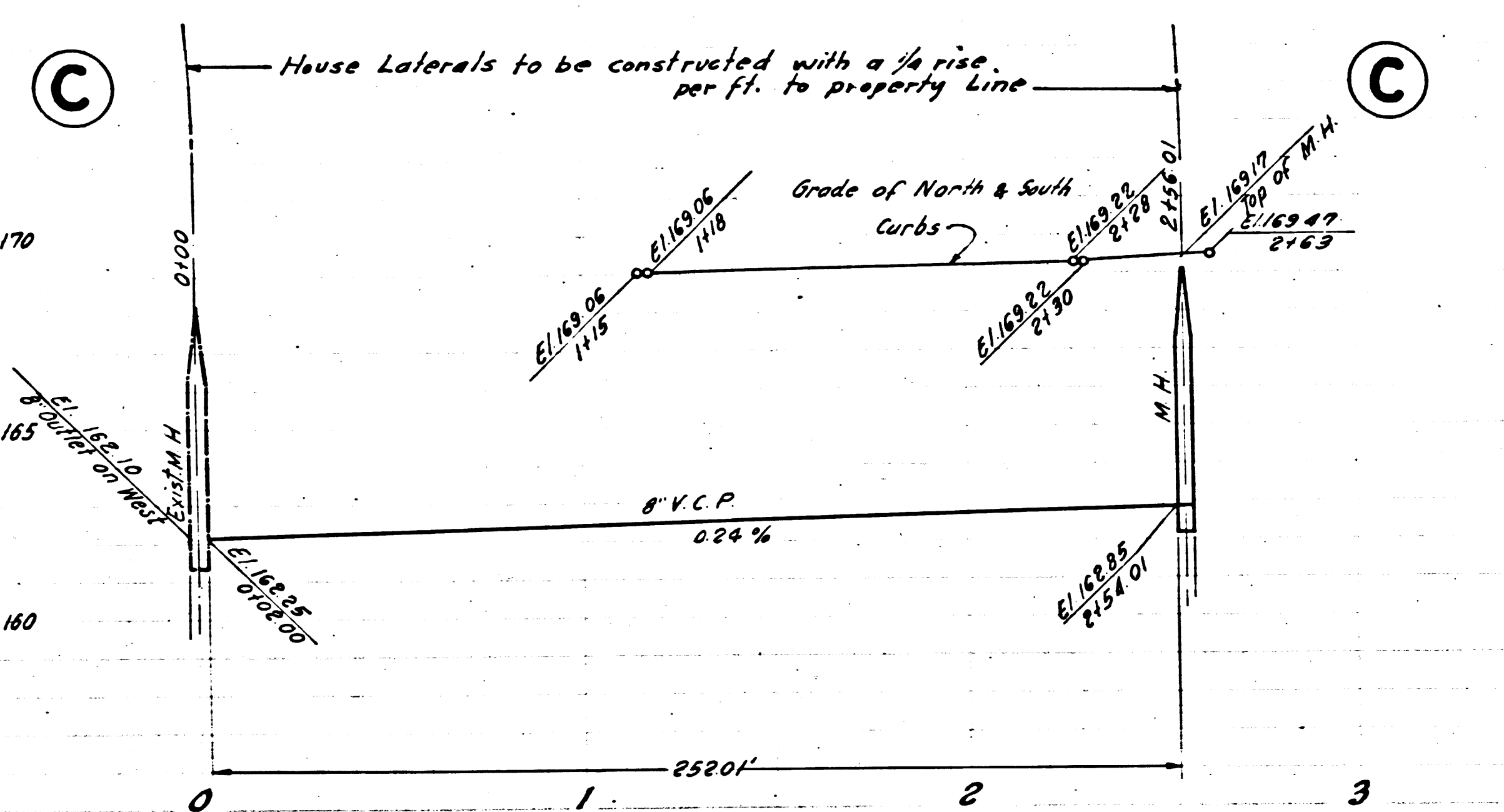
NO CHARGE FOR
CONNECTIONS

22,026



IDENTICAL POINTS

Trim Line



PAGE 4
RC. 3421

NO CHARGE FOR
CONNECTIONS

22,027

