

WHITTIER BLDG. DIST. N° 11

NOTE:

Provide stakes on the property lines or property lines produced at right angles to the sewer line at the center line of each manhole.

No representative of the County Engineer will survey or layout any portion of the work.

The owner or his authorized representative shall furnish the County Engineer with grade sheets and stations for all house laterals and Y branches and shall provide stakes for them at their proper locations with stationing plainly marked. Any change in location shall be requested in writing by the owner or his representative.

No revisions shall be made in these plans without the approval of the County Engineer.

1. Use standard manhole frames and covers, S-a-117 except as noted.
2. Use standard strength pipe except as noted.
3. Use cement mortar for all vitrified clay pipe joints.
4. Resurface all trench within paved area to meet L.A. County Road Dept. or California State Highway Dept. requirements in accordance with permit.
5. Encase four feet of sewer at points of interference with poles, S-a-119.
6. House laterals to be constructed with inverts at property line  $\text{---} \text{---}$  feet below curb grade except as noted.
7. All structures shall be brick sewer structures, S-a-104 except as noted.
8. For allowable leakage test, use Formula No.  $\text{---}$ , Specs., Sec. 51.
9. Manhole tops in unimproved Rights-Of-Way to be 6" above finish grade.

PROFILE, ALIGNMENT AND GRADE OF  
SANITARY SEWERS  
TO BE CONSTRUCTED IN

TRACT N° 20655

PRIVATE CONTRACT NO. 3434  
W. S. 36  
1 SHEET

Scale: VERT.  $\frac{1}{4"} = 1'$   
HORIZ.  $1" = 40'$  MAR. - 1955  
PREPARED IN THE OFFICES OF

KEMMERER ENGINEERING CO. INC.

*Wm. C. Thompson* Reg. C. E. No. 8242

FOR LEGEND SEE PLAN NO. S-a-64

NOTE:

Grades to which this improvement is to be constructed are shown on plans and profiles. Grade points for top of curbs, center line of streets, or center line of alleys are shown by circles on profiles. At all points between designated points the grade shall be established so as to conform to a straight line drawn between said designated points.

Elevations are in feet above U.S.C.S. datum or mean sea level.  
This drawing and the data hereon are hereby made a part of the specifications.  
Work shall be constructed according to specifications on file in the office of the County Engineer and shall be prosecuted only in the presence of the County Engineer.

Before work can be started, the contractor must obtain a permit to excavate in County streets from the L.A. County Road Dept., 108 W. 2nd St. and make a deposit with the County Engineer, 253 So. Broadway, R.R. 324, sufficient to cover the cost of construction inspection and record plans.

Approval of this plan by the County of Los Angeles does not constitute a representation as to the accuracy of the location of or the existence or non-existence of any underground utility, pipe, or structure within the limits of this project. This note applies to all sheets.

If work is to be done in a State Highway, a permit must be obtained from the State of California, Division of Highways, 120 South Spring Street.

COUNTY OF LOS ANGELES, CALIFORNIA

Approved, William J. Fox, County Engineer

*W. J. Fox* Chief Eng. CO. SAN. DIST. NO. 8

Sanitation Engineer

Checked by: *W. J. Fox* 6-7-55  
Office of County Engineer, Reg. C. E. No. 9406

Approved, A. M. Rawn  
Office Engineer

*A. M. Rawn*

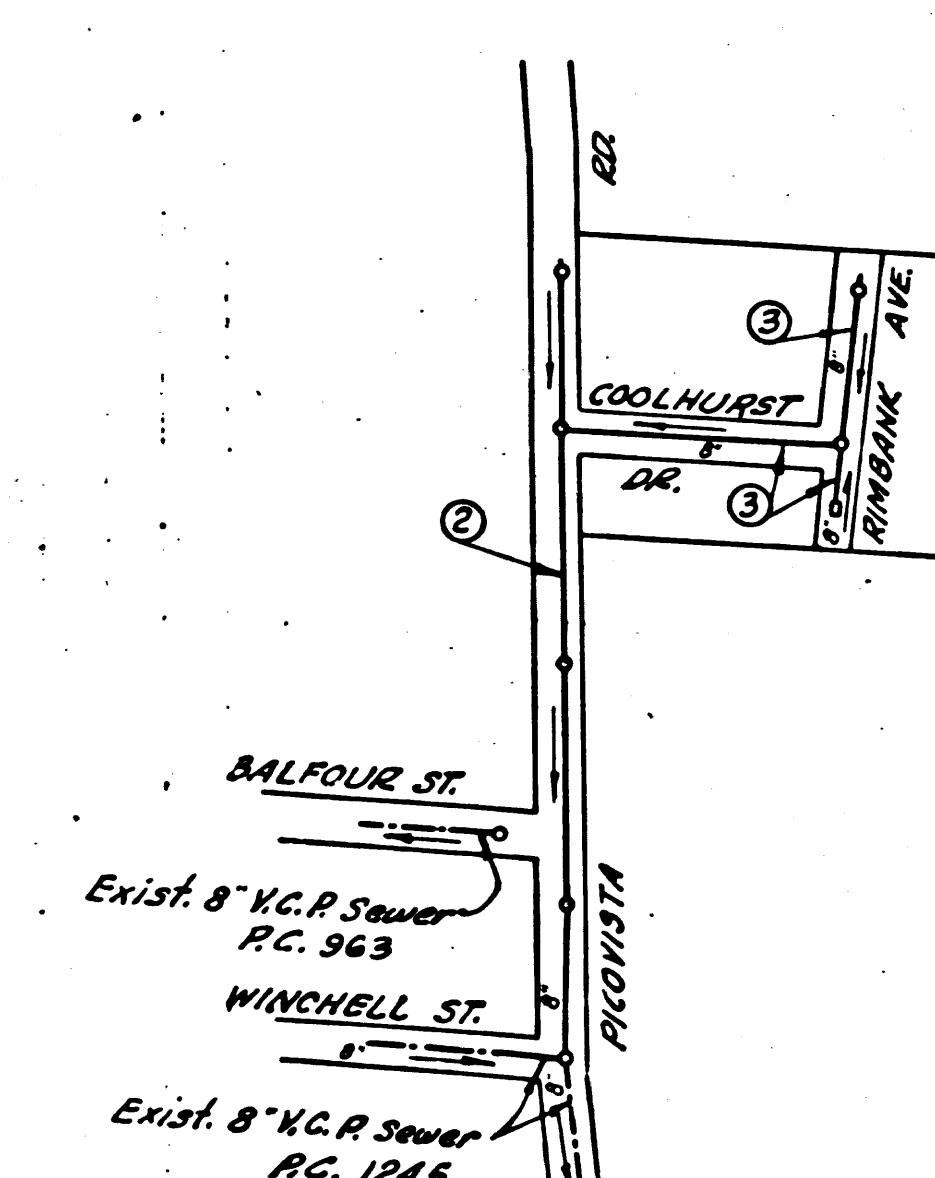
Office of County Engineer, Reg. C. E. No. 9406

PAGE 1  
P.C. 3434

22,232

TRACT N° 20655

PC. 3434  
AREA 29



INDEX MAP  
Scale: 1" = 300' TRACT No. 20655  
P.C. 3434

B.M. S.Y. 2802 - Set L & B. Nail in  
W. Curb, Picayuna Rd. 1' North  
of Co. Ref. @ N.W. Cor. Picayuna &  
Balfour St. - ELEV. - 163.359.

SHEET N°	PAGES
1	1-3

NO CHARGE FOR  
CONNECTIONS  
*L. Carter 6-6-55*

checked 2-23-56 *W. J. Fox*

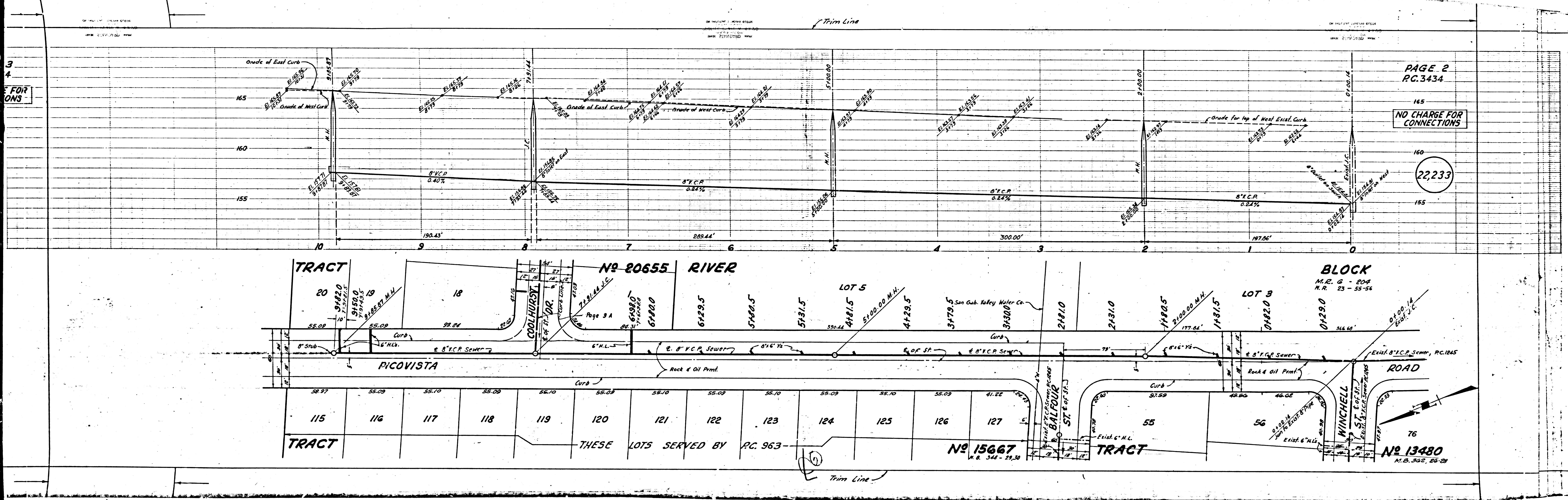
Trim Line

FOR  
ONS

PAGE 2  
PC.3434

NO CHARGE FOR  
CONNECTIONS

22,233



TRACT  
20

NO 20655 RIVER

BLOCK  
M.R. 6 - 204  
M.R. 23 - 55-56

PICOVISTA

ROAD

TRACT  
115

116

117

118

119

120

121

122

123

124

125

126

127

TRACT  
55

56

TRACT  
76

THESE LOTS SERVED BY  
PC. 963

NO 15667  
M.B. 54 - 55, 56

NO 13480  
M.B. 56, 57, 58, 59

Trim Line

