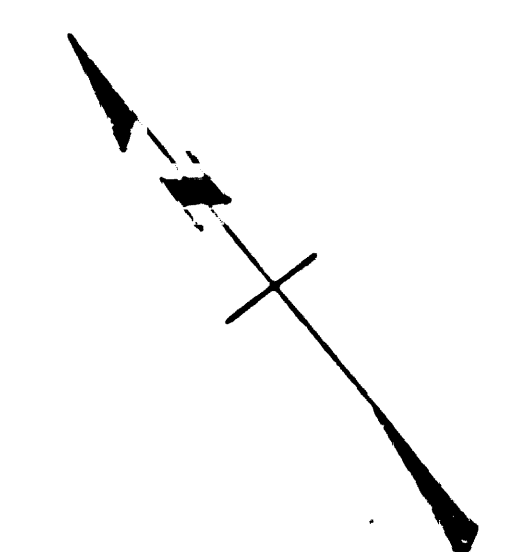


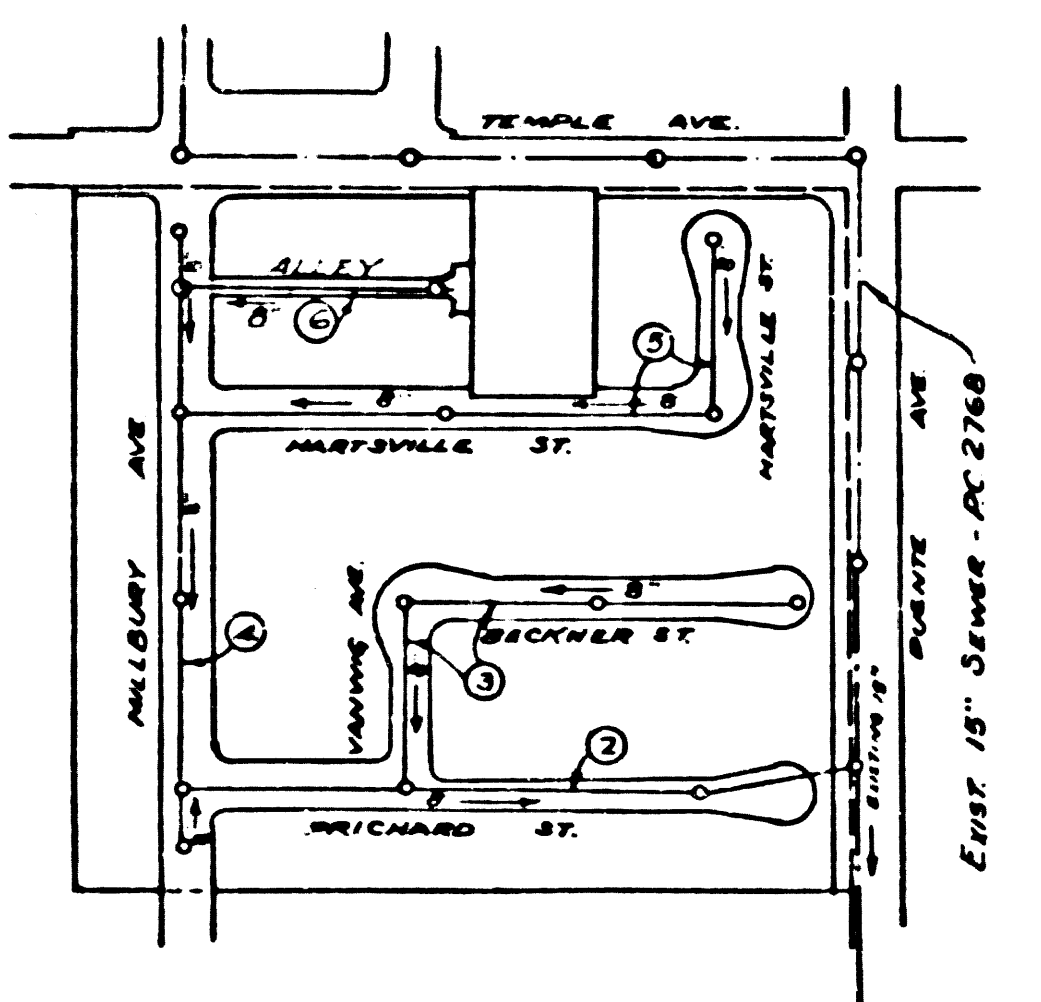
PC 3435  
PAGE 2

NO CHARGE FOR CONNECTIONS

21,957



B.M. S.G. 1093 Lead & Tack near SW Corner conc walk of SW corner of house # 14605 Nelson Ave, NE corner Sunset Ave & Nelson Ave Elev 304.686



INDEX MAP  
SCALE 1" = 300'  
TRACT NO 16614  
P.C. 3435

SHEET NO	PAGES
1	1-3
2	4-6

COLLECT CHARGES AS INDICATED  
Collection 9-27-55

checked 12-17-55 [Signature]

**NOTE: PUENTE BLDG. DIST. No. 2**

- Provide stakes on the property lines or property lines produced at right angles to the sewer line at the center line of each manhole.
- No representative of the County Engineer will survey or layout any portion of the work.
- The owner or his authorized representative shall furnish the County Engineer with grade sheets and stations for all house laterals and Y branches and shall provide stakes for them at their proper locations with stationing plainly marked. Any change in location shall be requested in writing by the owner or his representative.
- No revisions shall be made in these plans without the approval of the County Engineer.
1. Use standard manhole frames and covers, S-a-117.
  2. Use standard strength pipe except as noted.
  3. Use cement mortar for all vitrified clay pipe joints.
  4. Resurface all trench within paved area to meet L.A. County Road Dept. or California State Highway Dept. requirements in accordance with permit.
  5. Encase four feet of sewer at points of interference with poles, S-a-119.
  6. House laterals to be constructed with inverts at property line... 6 feet below curb grade except as noted.
  7. All structures shall be brick sewer structures, S-a-104.
  8. For allowable leakage test, use Formula No. 1, Spec's., Sec. 51.
  9. Manhole tops in unimproved Rights-Of-Way to be 6" above finish grade.

Trim Line  
PROFILE, ALIGNMENT AND GRADE OF  
**SANITARY SEWERS**  
TO BE CONSTRUCTED IN

**TRACT No 16614**

PRIVATE CONTRACT NO. 3435  
W. S. 46  
TWO SHEETS

Scale: VERT. 1" = 40' April 1954  
PREPARED IN THE OFFICES OF  
NATIONAL ENGINEERING & SURVEYING SERVICE CO

*Effsworth J. Espersen*  
Eng. C. E. No. 5220

FOR LEGEND SEE PLAN NO. S-0-64

**NOTE:**

Grades to which this improvement is to be constructed are shown on plans and profiles. Grade points for top of curbs, center line of streets, or center line of alleys are shown by circles on profile. At all points between designated points the grade shall be established so as to conform to a straight line drawn between said designated points.

Elevations are in feet above U.S.G.S. datum or mean sea level.

This drawing and the data hereon are hereby made a part of the specifications.

Work shall be constructed according to specifications on file in the office of the County Engineer and shall be prosecuted only in the presence of the County Engineer.

Before work can be started, the contractor must obtain a permit to excavate in County streets from the L.A. County Road Dept., 108 W 2nd St and make a deposit with the County Engineer, Room 324 253 So. Broadway L.A. sufficient to cover the cost of construction inspection and record plans.

Approval of this plan by the County of Los Angeles does not constitute a representation as to the accuracy of the location of or the existence or non-existence of any underground utility, pipe, or structure within the limits of this project. This note applies to all sheets.

If work is to be done in a State Highway, a permit must be obtained from the State of California, Division of Highways, 120 South Spring Street.

COUNTY OF LOS ANGELES, CALIFORNIA

Approved, John A. Leming County Engineer  
Approved, A. M. Rawm  
CHIEF ENGR. - 59 SAN. DIST. NO. 15  
By *A.P. Collins* District Engineer  
By *[Signature]* Office Engineer

© 1954 by *R. L. Williams 12-3-55*  
Office of County Engineer, Dep. C. E. No. 1802

PC 3435  
PAGE 1

21,956

Page Trim Line  
TRACT No 16614

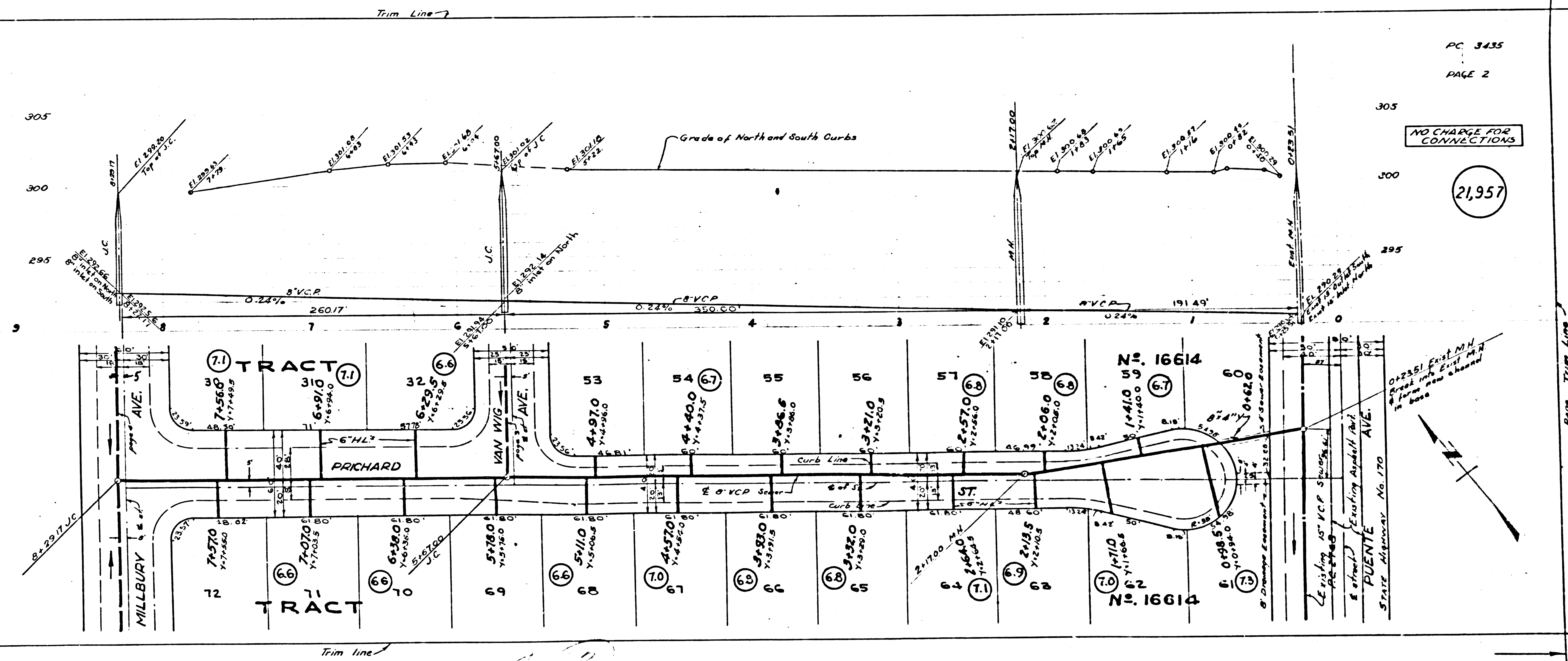
PC 3435  
PAGE 2

Trim Line

FOR  
CAMS

58

Page Trim Line



Page Trim Line

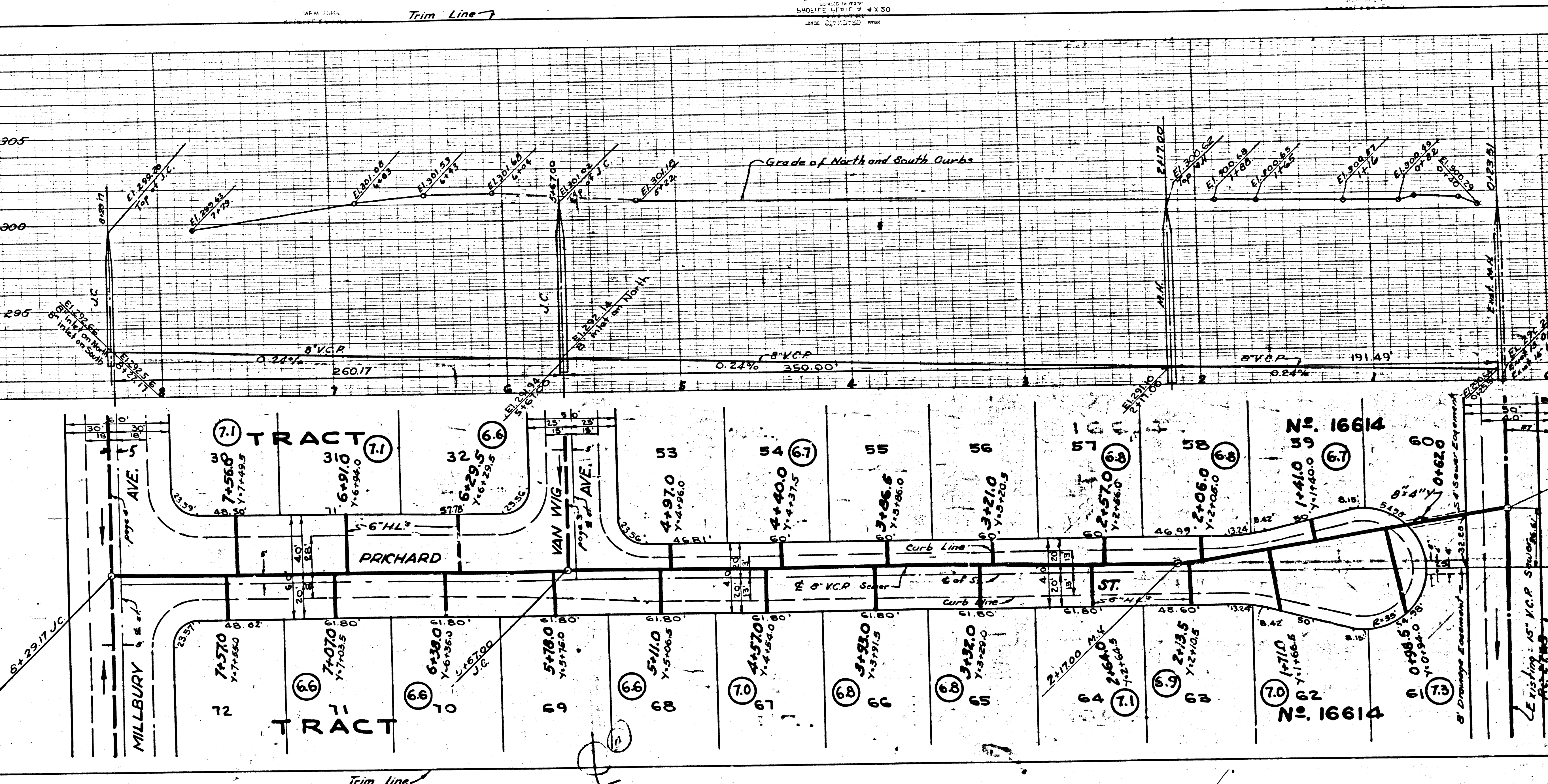
PC 3431

PAGE 3

BASE FOR SECTIONS

21,958

Page Trim Line



PC 3435

PAGE 2

NO CHARGE FOR CONNECTIONS

21,957

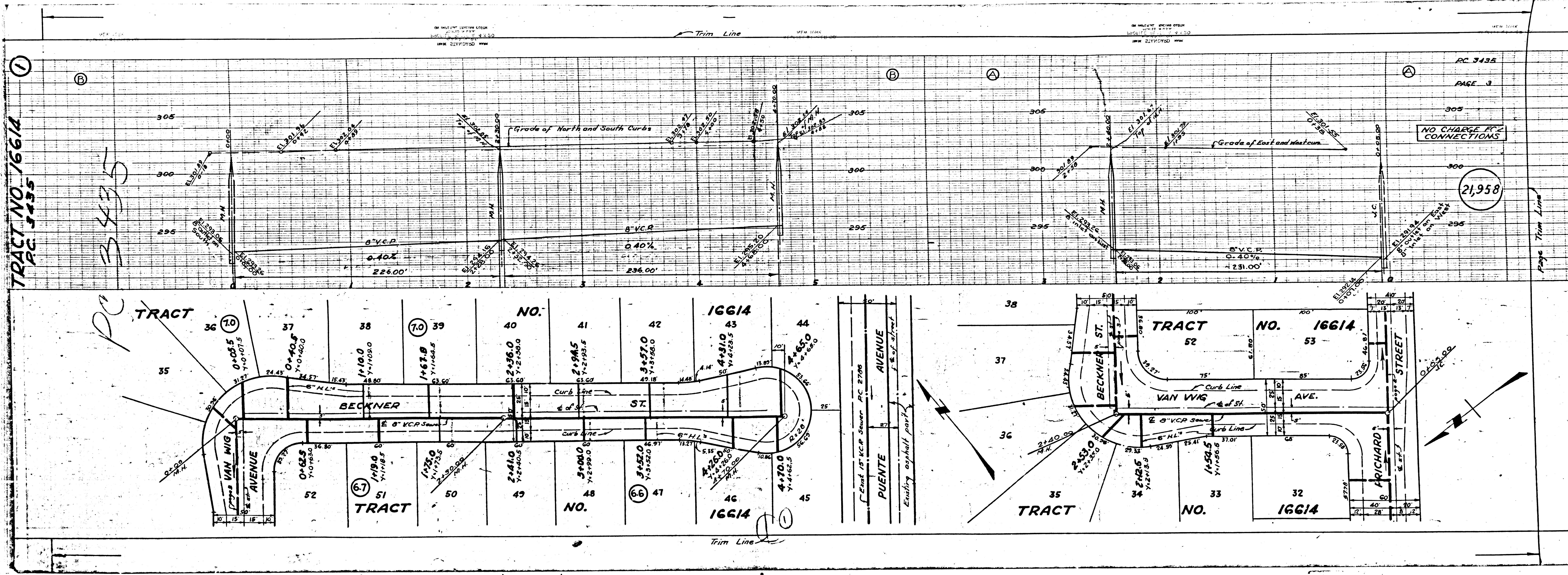
Page Trim Line

0.225% East Main  
 Street into Curbs  
 4' from  
 in base

Leaving 15' V.C.P. Shown  
 in  
 & enter Existing Asphalt Path  
 PUENTE AVE  
 State Highway No. 170

TRACT NO. 16614  
PC 3435

PC 3435



PC 3435  
PAGE 3

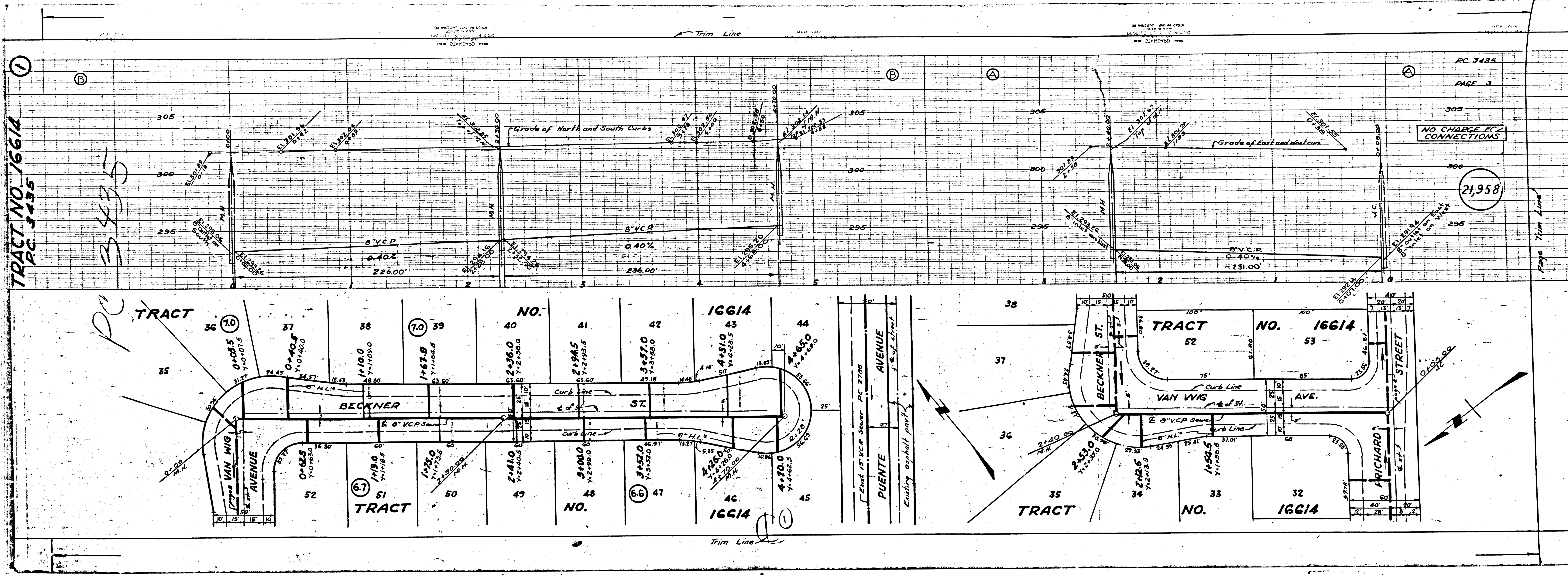
NO CHARGE FOR CONNECTIONS

21,958

Page Trim Line

TRACT NO. 16614  
PC 3435

PC 3435

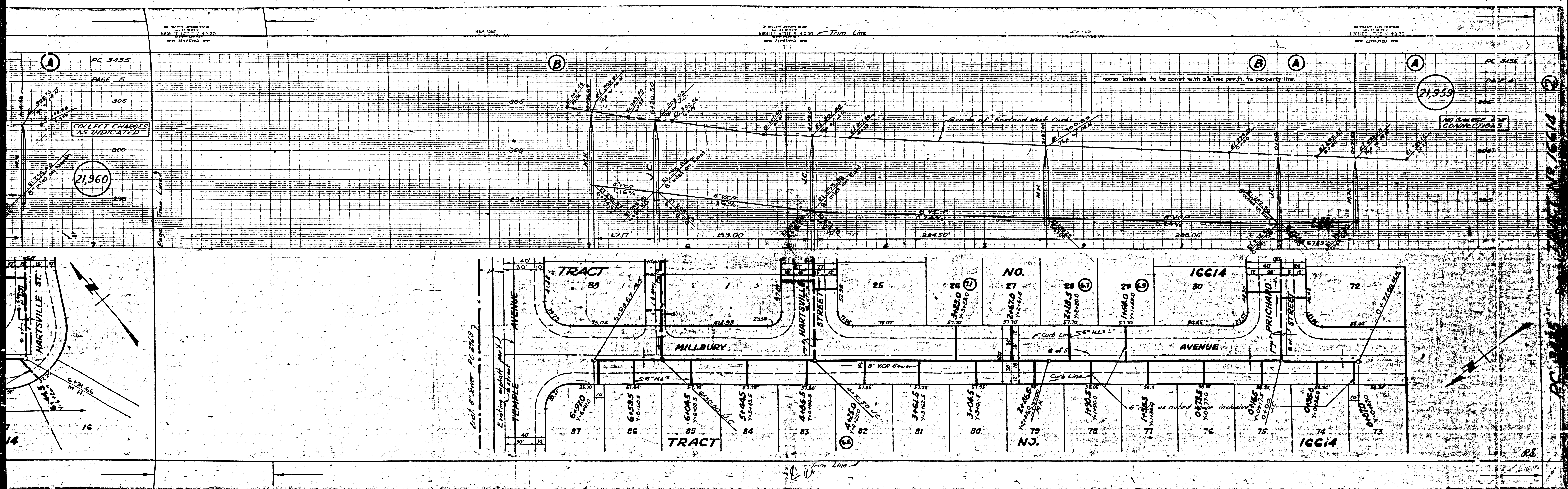


PC 3435  
PAGE 3

NO CHARGE FOR CONNECTIONS

21,958

Page Trim Line

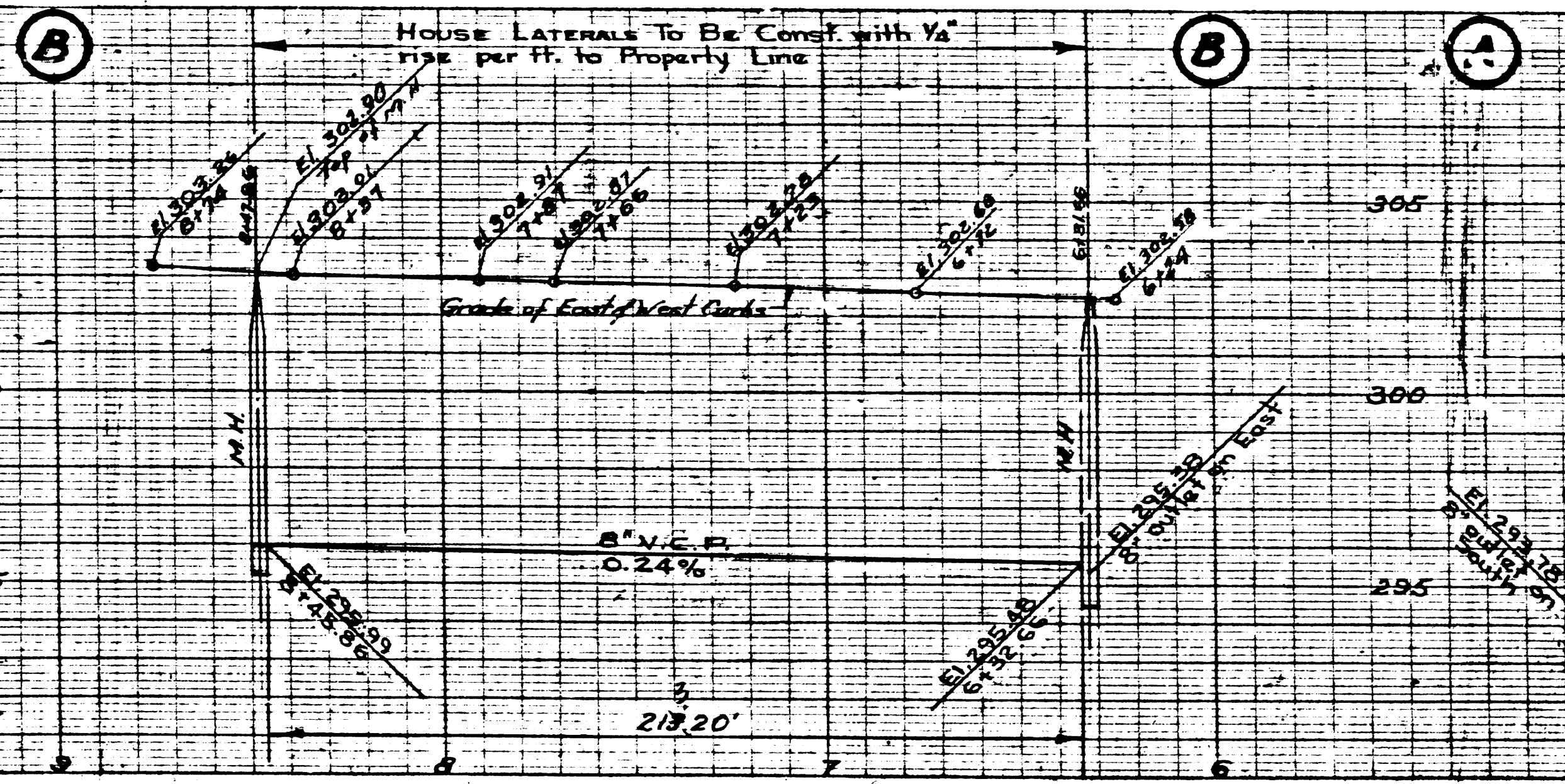


PC 3435  
PAGE 6

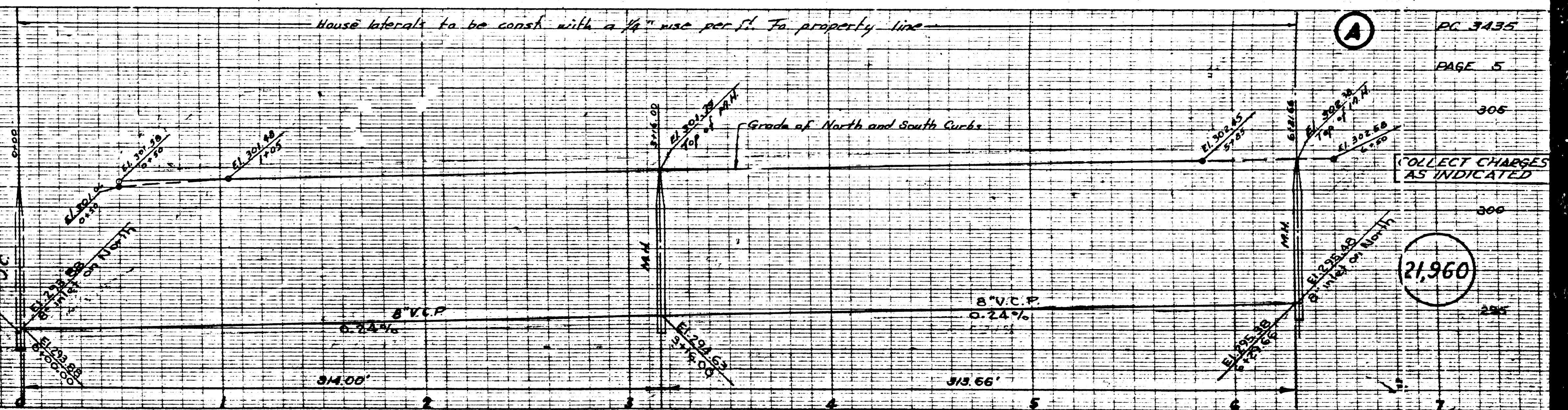
21,961

NO CHARGE FOR CONNECTIONS

House laterals to be const with Va  
rise per ft. to Property Line



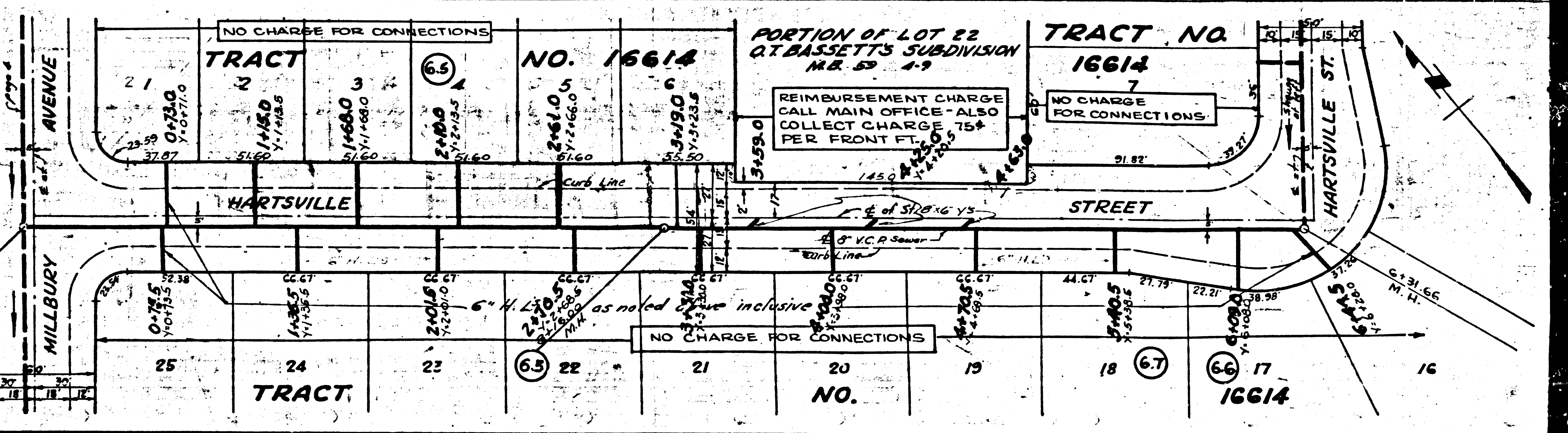
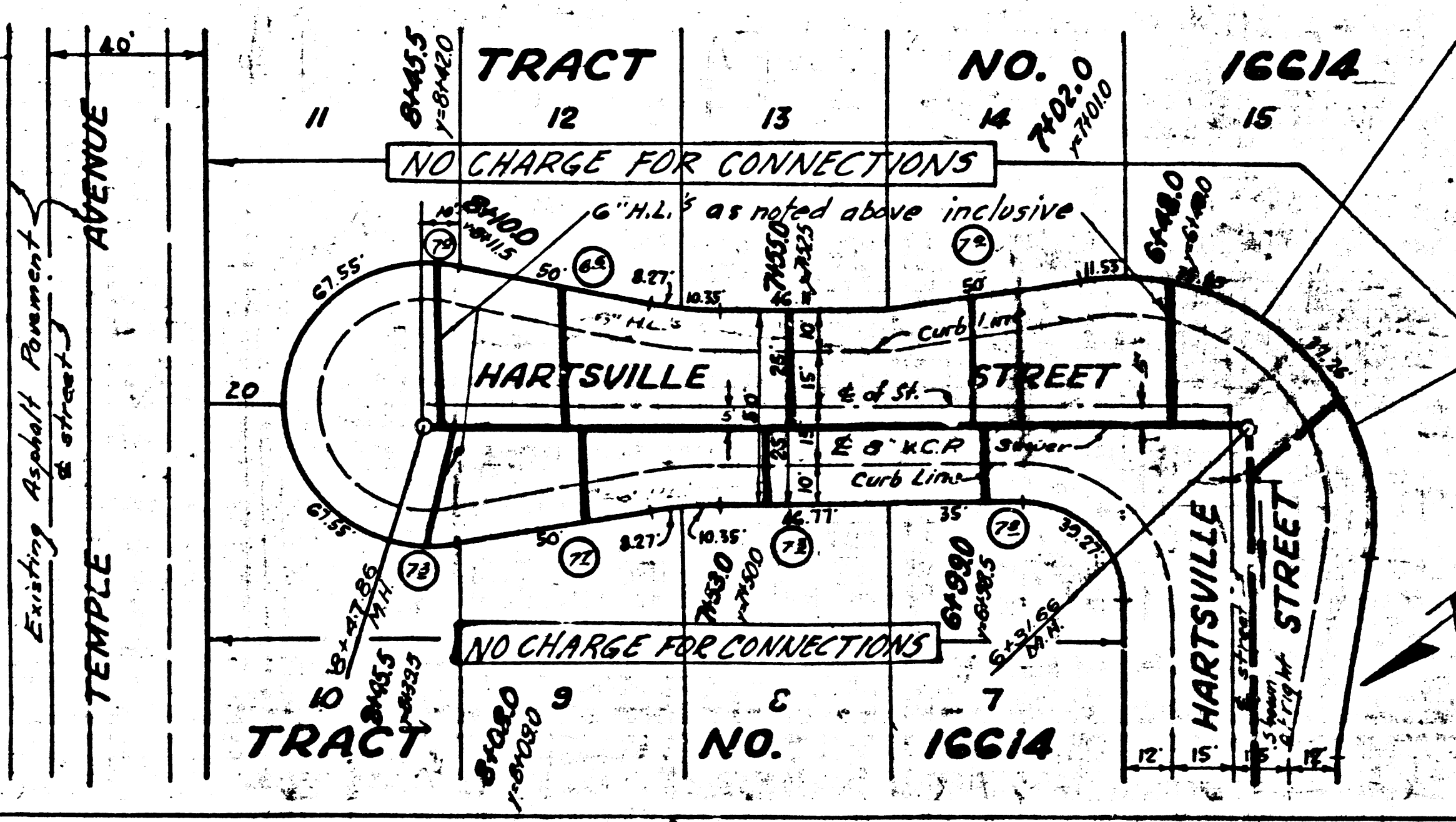
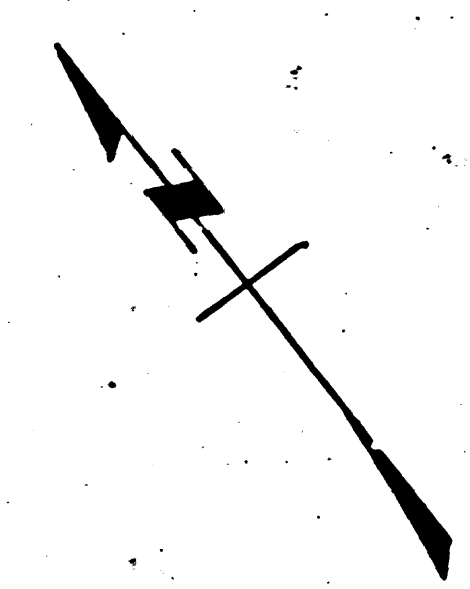
House laterals to be const with a 1/2" rise per ft. to property line



PC 3435  
PAGE 5

COLLECT CHARGES AS INDICATED

21,960



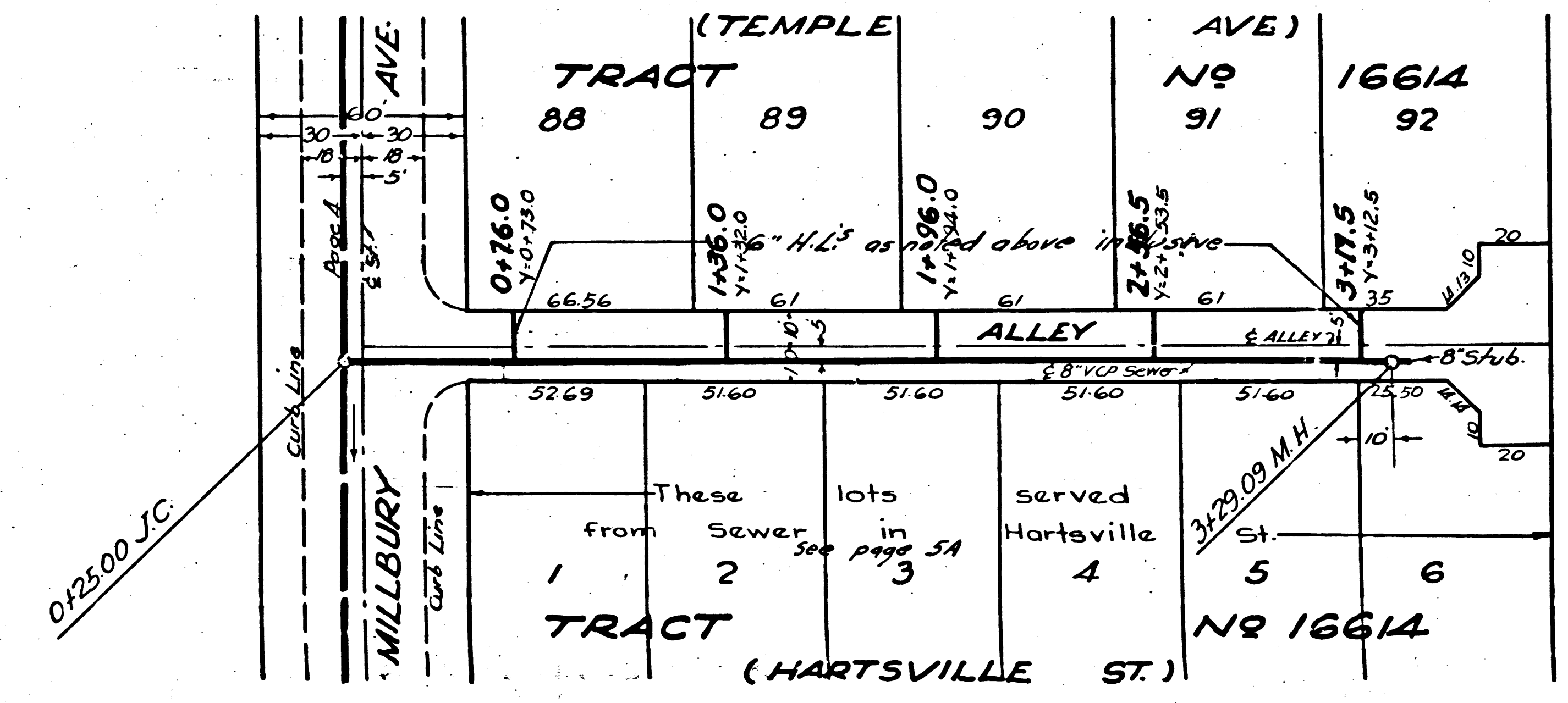
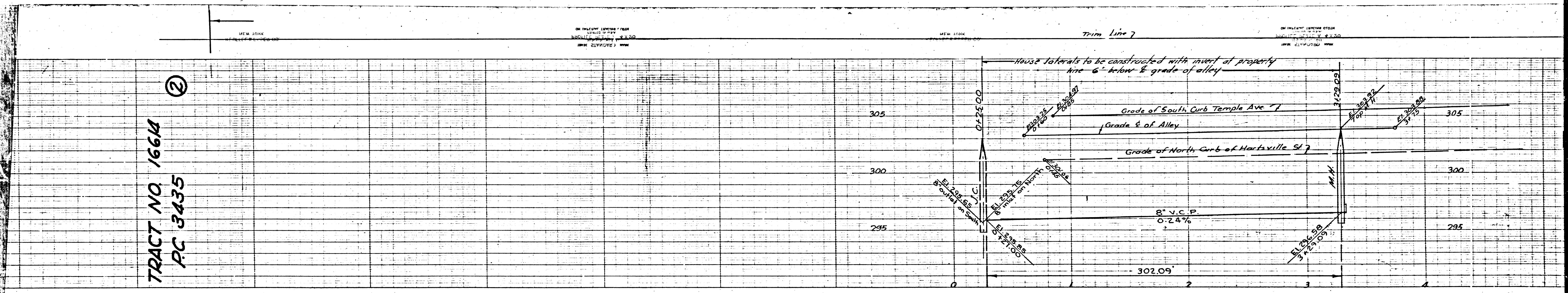
TRACT NO. 1661A  
PC 3435

②

ON HILBERT, SECTION 7, T4N  
R10E, S17E  
S85°15'00"E 113.30'  
S89°00'00"E 113.30'  
S89°00'00"E 113.30'

Trim Line 7

ON HILBERT, SECTION 7, T4N  
R10E, S17E  
S85°15'00"E 113.30'  
S89°00'00"E 113.30'  
S89°00'00"E 113.30'



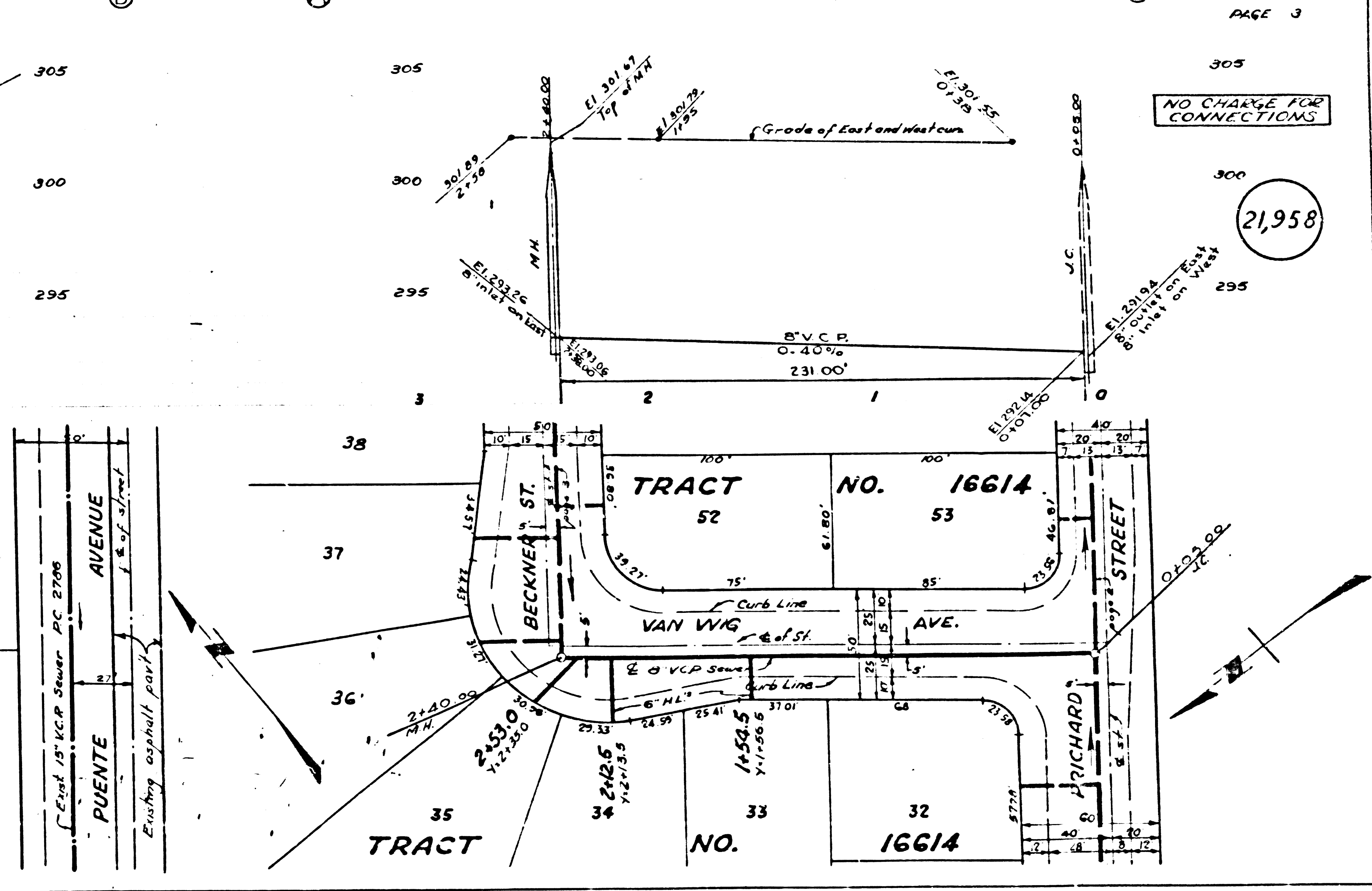
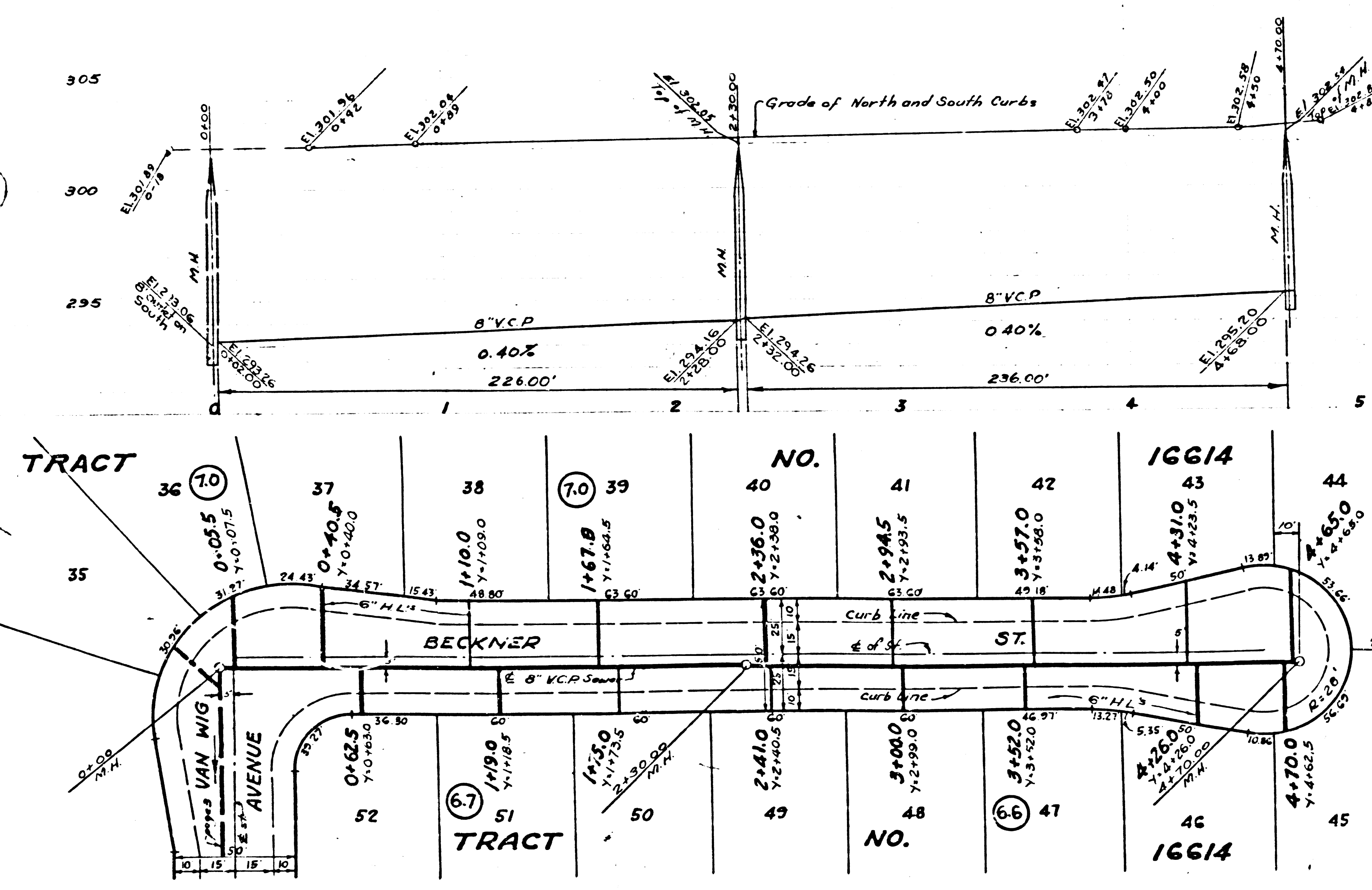
②

Trim Line 7



TRACT NO. 16614  
PC 3435

3435



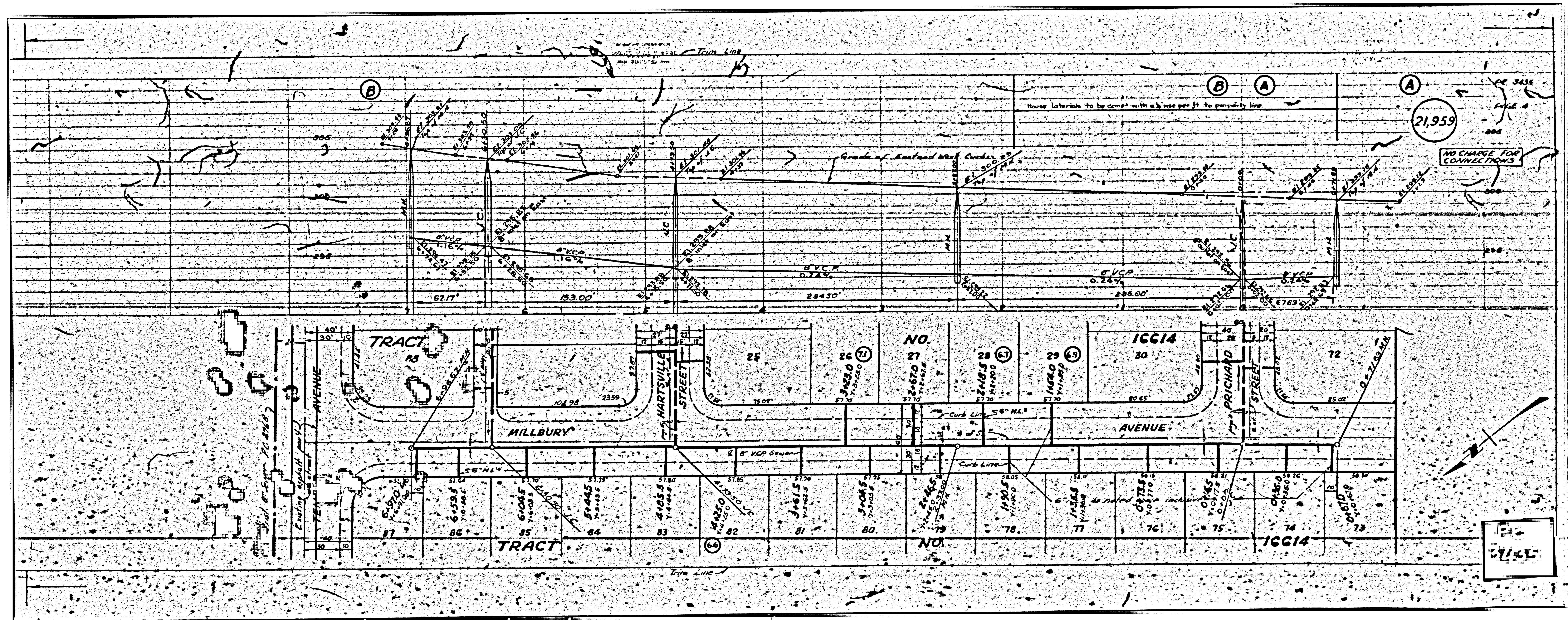
PC 3435  
PAGE 3

NO CHARGE FOR CONNECTIONS

21,958

Page Trim Line

Trim Line



21,959

House laterals to be connected with a 1/2 inch per ft. to property line

NO CHARGE FOR CONNECTIONS

Grade of East End 66' Curbs

B

B

A

A

TRACT

NO.

NO.

NO.

NO.

TRACT

TRACT

TRACT

TRACT

TRACT

TRACT

TRACT

TRACT

TRACT

TRACT

TRACT

TRACT

TRACT

TRACT

TRACT

TRACT

TRACT

TRACT

TRACT

TRACT

TRACT

TRACT

TRACT

TRACT

TRACT

TRACT

TRACT

TRACT

TRACT

TRACT

TRACT

TRACT

TRACT

TRACT

TRACT

TRACT

TRACT

TRACT

TRACT

TRACT

TRACT

TRACT

TRACT

TRACT

TRACT

TRACT

TRACT

TRACT

TRACT

TRACT

TRACT

TRACT

TRACT

TRACT

TRACT

TRACT

TRACT

TRACT

TRACT

TRACT

TRACT

TRACT

TRACT

TRACT

TRACT

TRACT

TRACT

TRACT

TRACT

TRACT

TRACT

TRACT

TRACT

TRACT

TRACT

TRACT

TRACT

TRACT

TRACT

TRACT

TRACT

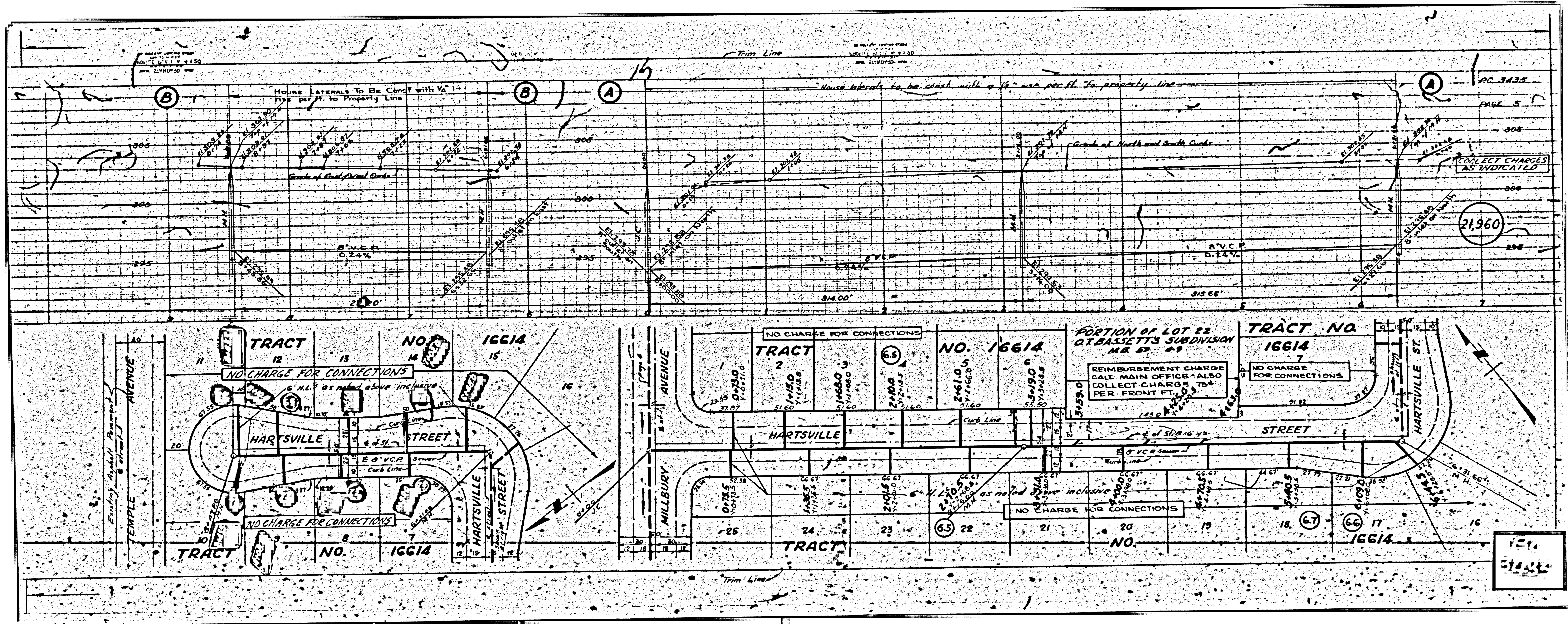
TRACT

TRACT

TRACT

TRACT

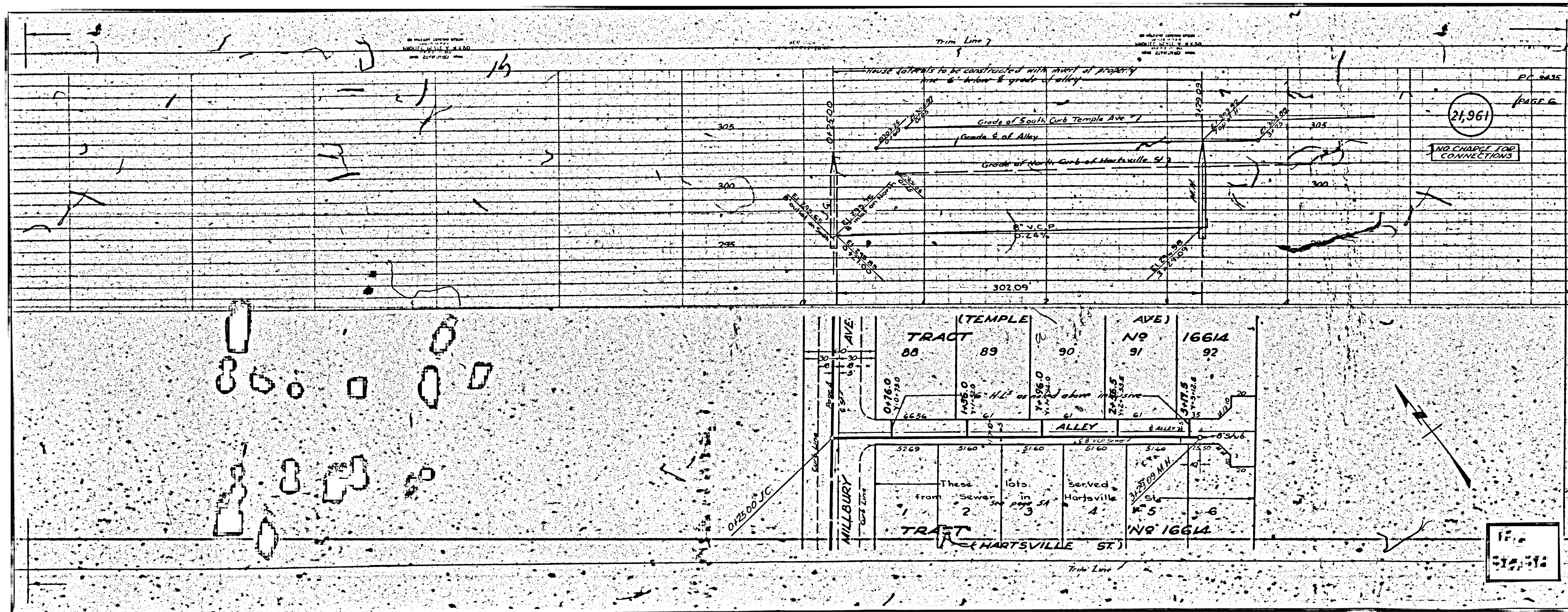
271.25



PC 3435  
PAGE 5

21,960

121  
3125



17

21,961

NO CHARGE FOR CONNECTIONS

PAGE 6

PC 3435

Trim Line 7

House laterals to be constructed with invert at property line 6' below & grade of alley.

Grade of South Curb Temple Ave

Grade S. of Alley

Grade of North Curb of Hartsville St

V.C.P.  
0.24%

302.09

TRACT (TEMPLE AVE) NO 16614

88 89 90 91 92

0.1760 0.1760 0.1760 0.1760 0.1760

6556 14350 14350 14350 14350

ALLEY

3269 5160 5160 5160 5160

These lots served from sewer in Hartsville

TRACT (HARTSVILLE ST) NO 16614

1 2 3 4 5 6

Trim Line

0.12500% JC

MILLBURY AVE

Curb Line

Curb Line

Curb Line

Curb Line

Curb Line

Curb Line

Curb Line

Curb Line