

PL. 3436  
PAGE 2

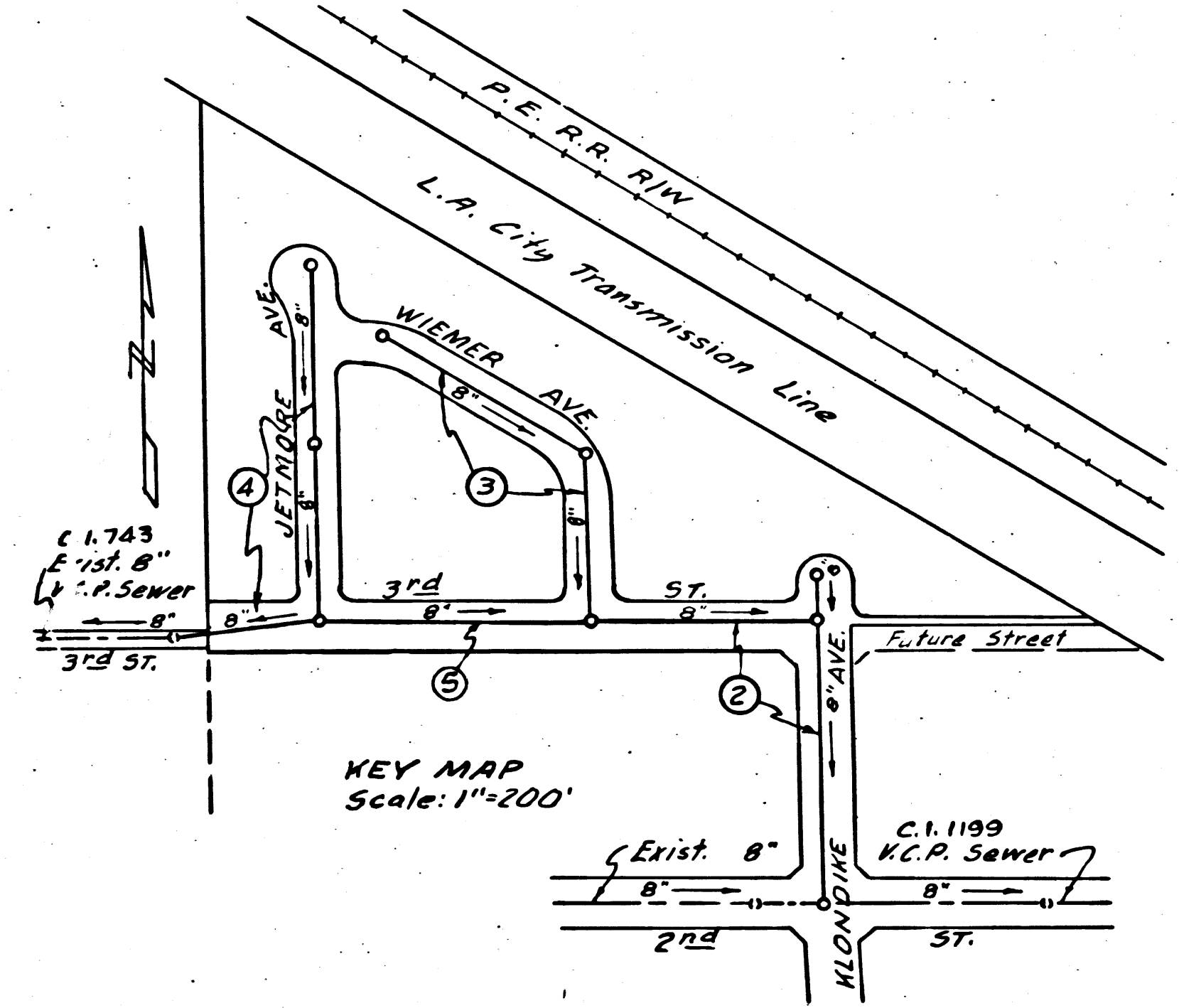
21,937

REVISION  
Realignment of sewer line  
on Alondike Ave.  
Addition of sewer line on 3rd  
St. between Wiener Ave. and  
Jefferson Ave.  
Approved: J. V. Oude  
Date: 11-18-55

BENCH MARK: S.Y.B.M. 2339, Elev. 75.804.  
Lead & Tack near S.E. corner concrete walk to porch of  
house No. 8449 on 2nd St. 45' north of centerline of 2nd  
St., and 90' west of centerline of Downey Avenue.

BELLFLOWER BLDG. DIST. #4

- NOTE:
1. Provide stakes on the property lines or property lines produced at right angles to the sewer line at the center line of each manhole.
  2. No representative of the County Engineer will survey or layout any portion of the work.
  3. The owner or his authorized representative shall furnish the County Engineer with grade sheets and stations for all house laterals and Y branches and shall provide stakes for them at their proper locations with stationing plainly marked. Any change in location shall be requested in writing by the owner or his representative.
  4. No revisions shall be made in these plans without the approval of the County Engineer.
  5. Use standard manhole frames and covers, S-a-117.
  6. Use standard strength pipe except as noted.
  7. Use cement mortar for all vitrified clay pipe joints.
  8. Resurface all trench within paved area to meet L.A. County Road Dept. or California State Highway Dept. requirements in accordance with permit.
  9. Encase four feet of sewer at points of interference with poles, S-a-119.
  10. All 18" to be laid horizontal and house laterals to be constructed with 1/4" rise per foot to property line.
  11. All structures shall be brick sewer structures, S-a-104.
  12. For allowable leakage test, use Formula No. 1, Spec's., Sec. 51.
  13. Manhole tops in unimproved Rights-Of-Way to be 6" above finish grade.



PROFILE ALIGNMENT AND GRADE OF  
SANITARY SEWERS  
TO BE CONSTRUCTED IN

TRACT No 20823

PRIVATE CONTRACT NO. 3436  
W. S. 32  
ONE SHEET  
Scale: VERT. 1"=4'  
HORIZ. 1"=40'  
MARCH, 1955  
PREPARED IN THE OFFICES OF

J. V. Oude  
Reg. C.E. No. 2  
FOR LEGEND SEE PLAN NO. S-a-117

NOTE:  
Grades to which this improvement is to be constructed are shown  
points for top of curbs, center line of streets, or center line of alleyways.  
At all points between designated points the grade shall be established by  
line drawn between said designated points.  
Elevations are in feet above U.S. datum or mean sea level.  
This drawing and the data hereon are hereby made a part of the  
work to be constructed according to specifications on file in the  
office of the County Engineer.  
Before work can be started, the contractor must obtain a permit  
from the L.A. County Road Dept., 108 W. 2nd St. and make a deposit  
of \$250.00 sufficient to cover the cost of cost  
plans.  
Approval of this plan by the County of Los Angeles does not  
to the accuracy of the location of or the existence or non-existence of  
or structure within the limits of this project. This note applies to all sheets.  
If work is to be done in a State Highway, a permit must be obtained  
from the California Division of Highways, 120 South Spring Street.

COUNTY OF LOS ANGELES, CALIF.  
Approved, William J. Fox, County Engineer  
BY: J. V. Oude  
Date: 11-18-55

SHEET NO.	PAGES
1	1-3

checked 12-9-55 W. Oude

Trim Line

PC3436  
PAGE 3

NO CHARGE FOR CONNECTIONS

21,938

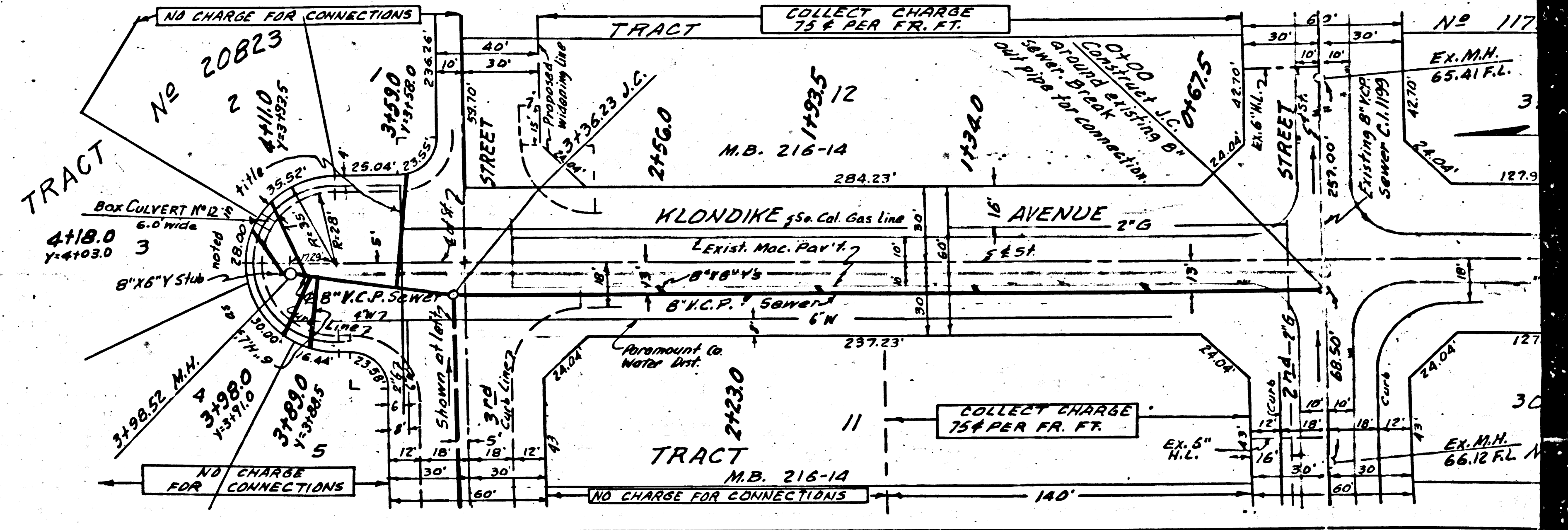
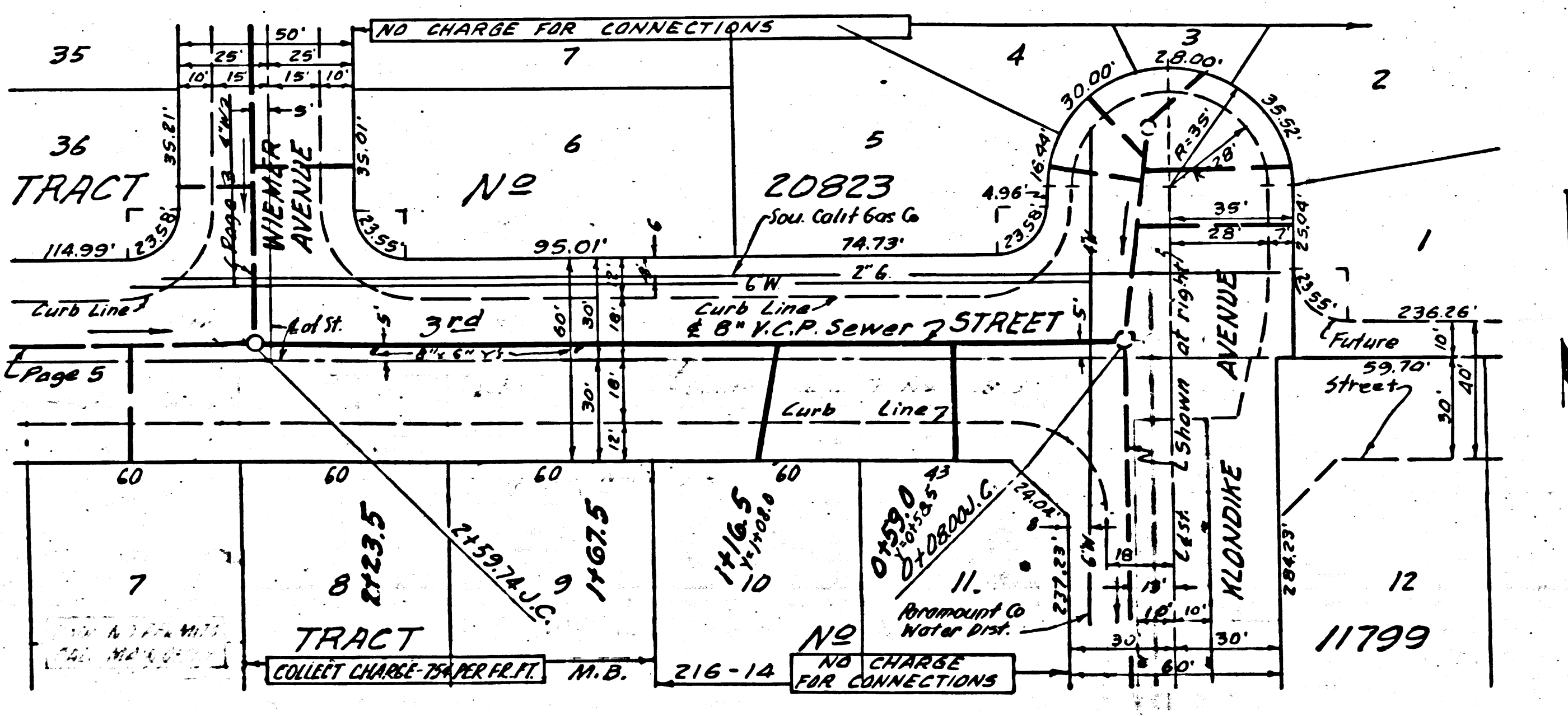
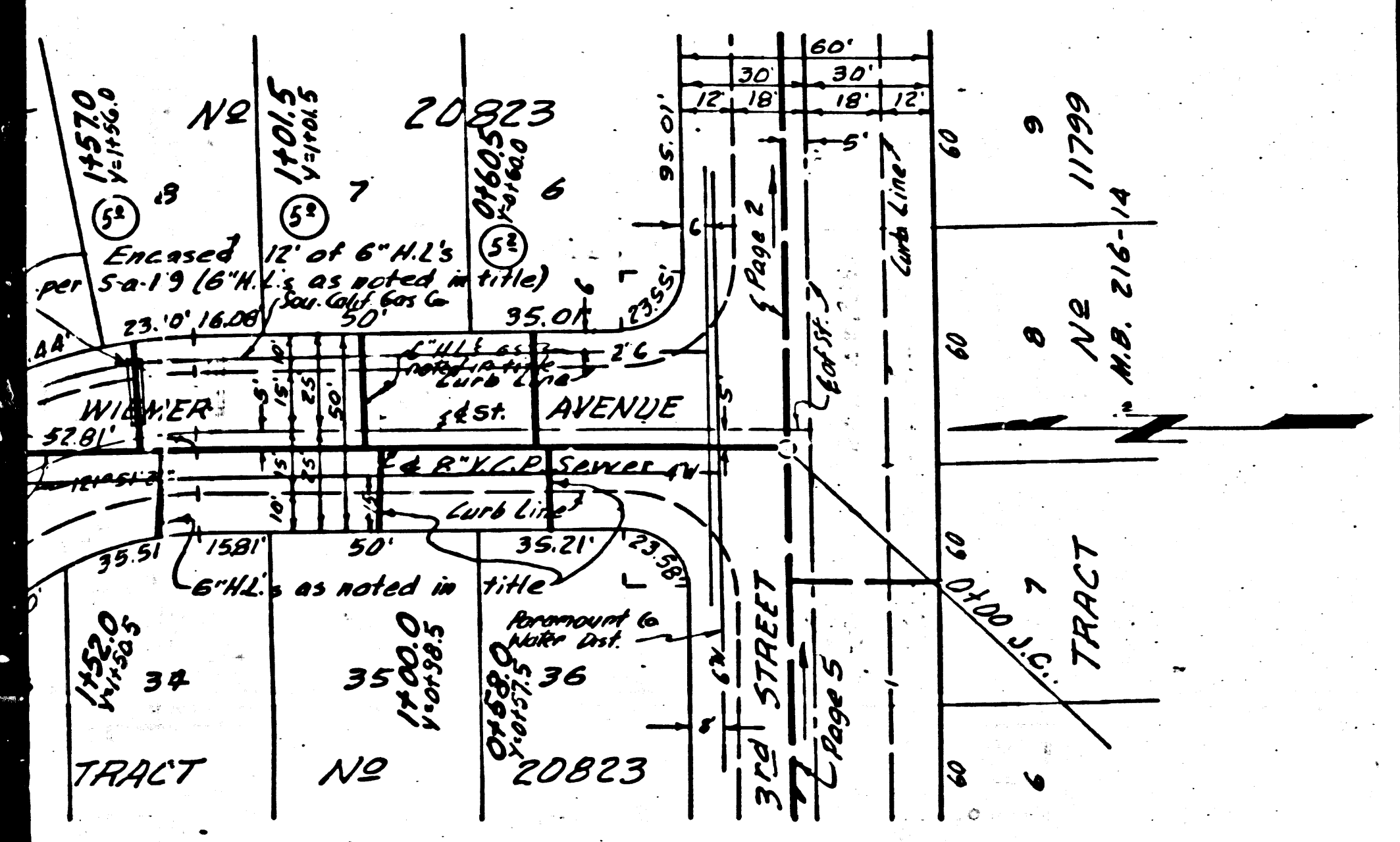
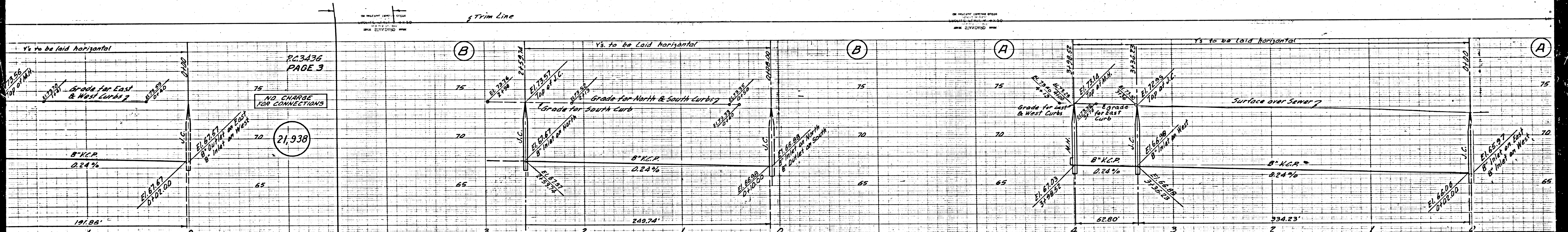
Trim Line

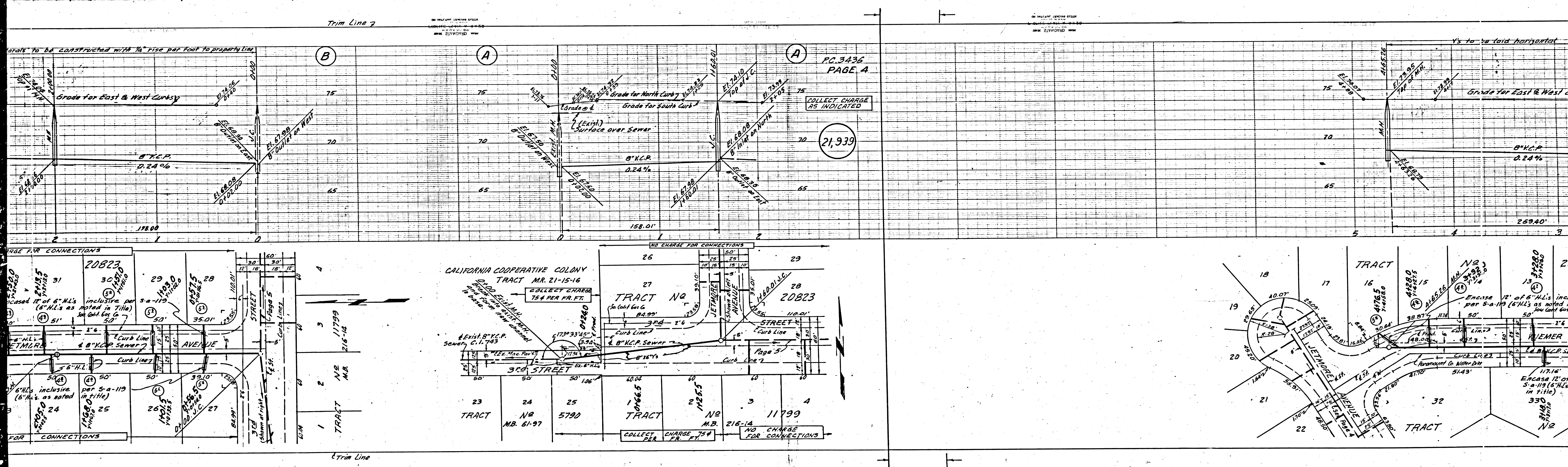
(B)

(B)

(A)

(A)



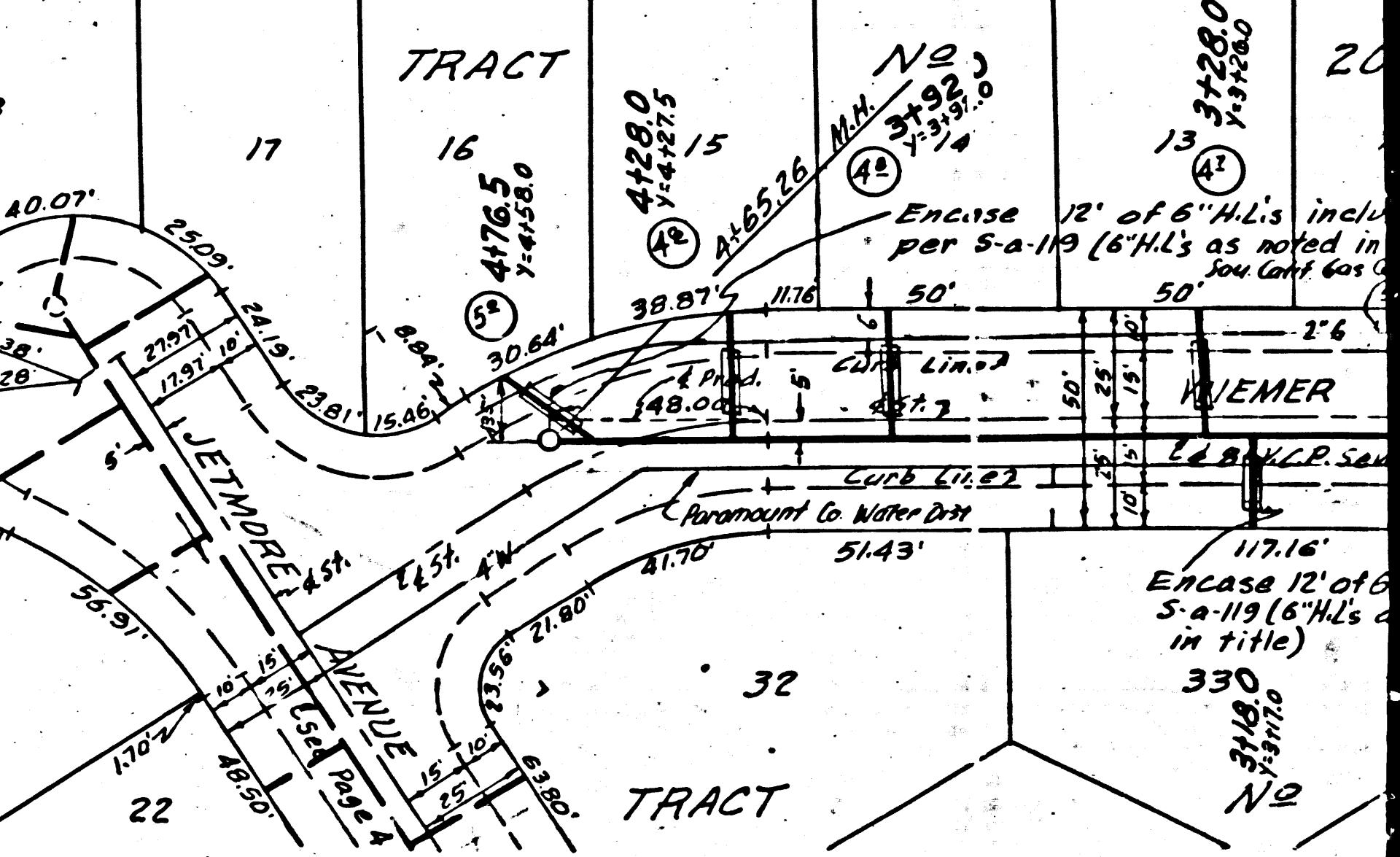
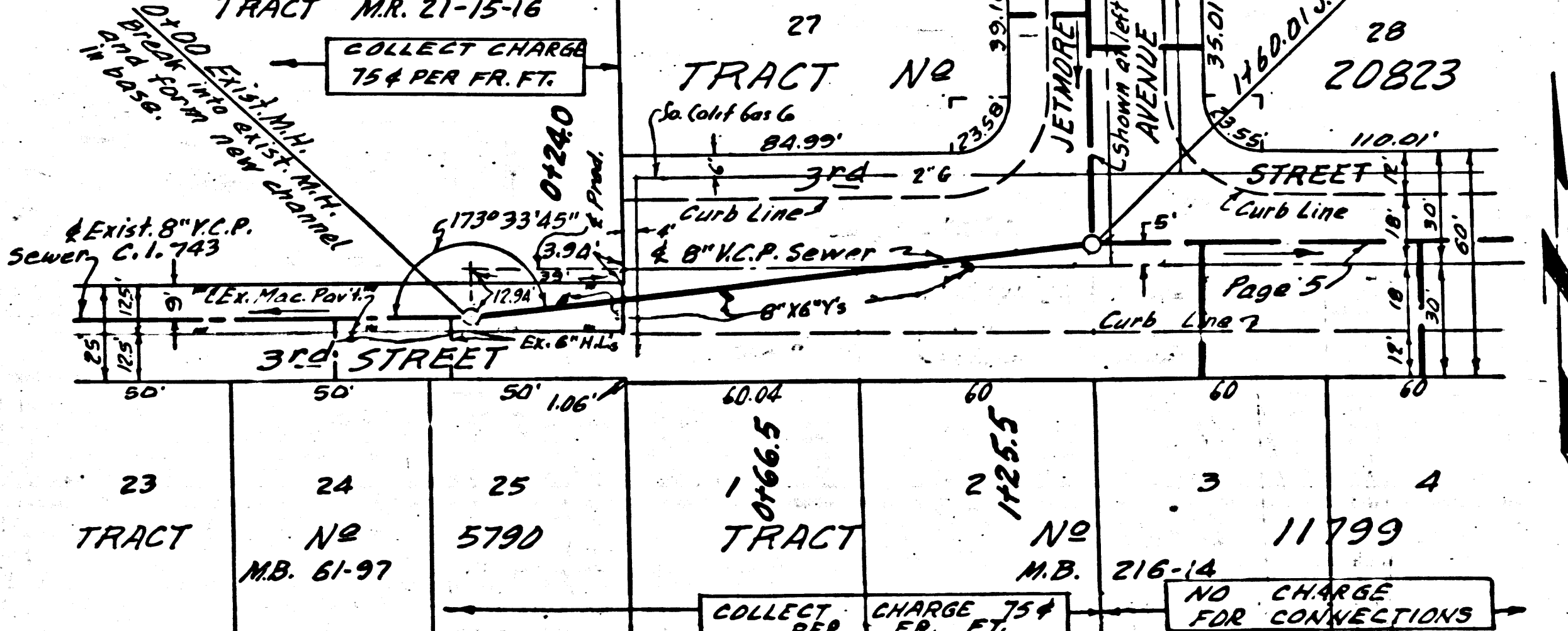


Trim Line 7

PC 3436  
PAGE 4

21,939

CALIFORNIA COOPERATIVE COLONY  
TRACT MR. 21-15-16



ON PRESENT LOTS OF 2000  
UNLESS OTHERWISE NOTED  
BY THE SURVEYOR

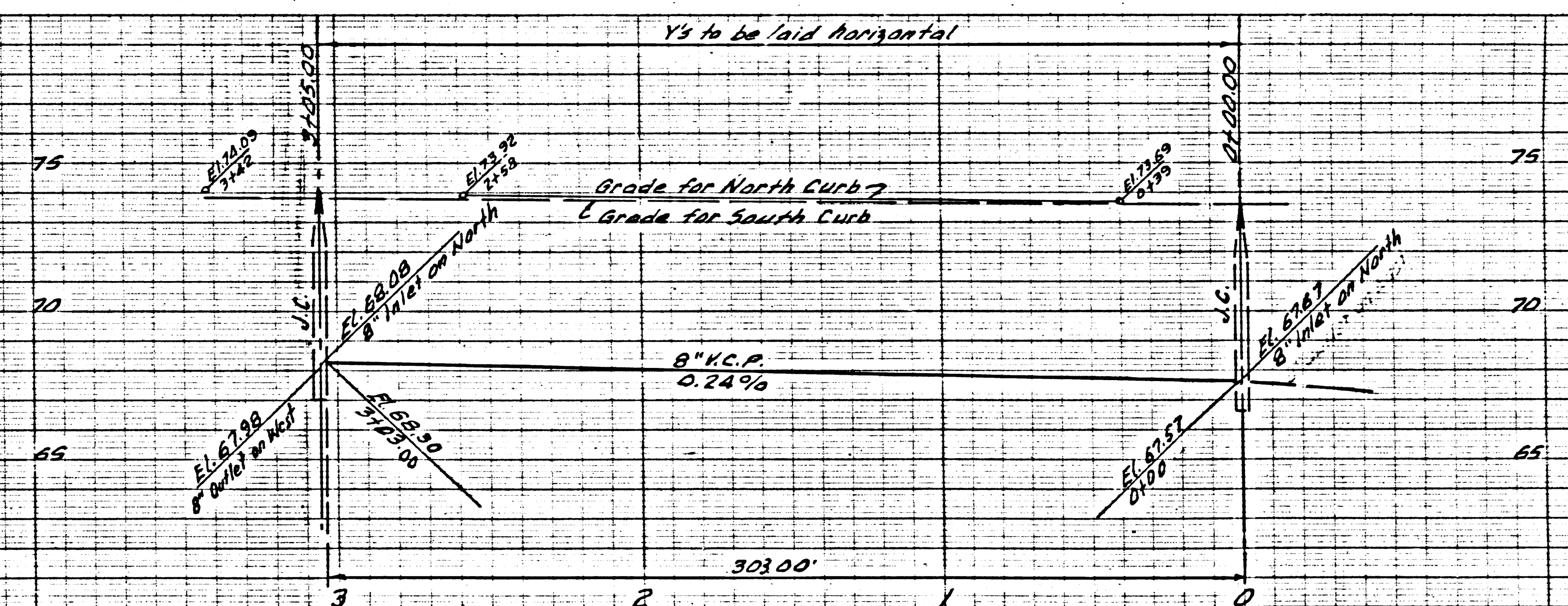
Train Line

ON PRESENT LOTS OF 2000  
UNLESS OTHERWISE NOTED  
BY THE SURVEYOR

(A)

(A)

(B)

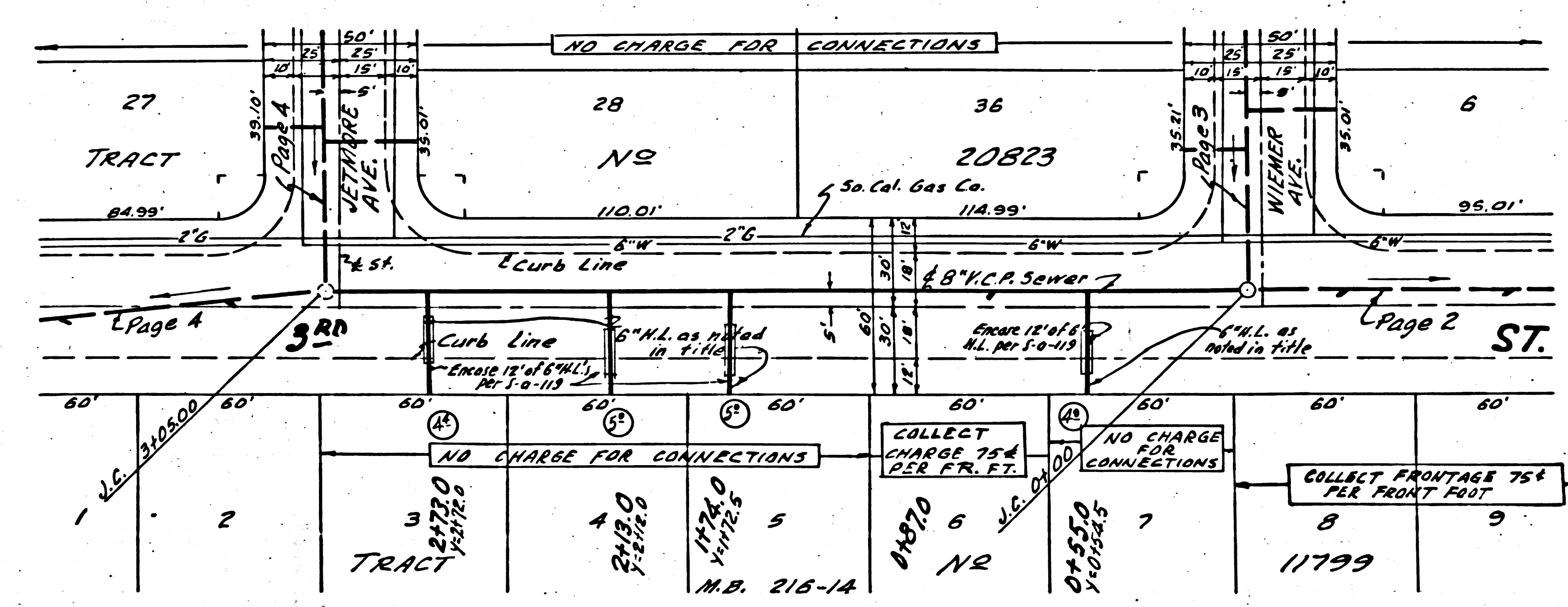


P.C. 3436  
PAGE 5

COLLECT CHARGE  
AS INDICATED

21,940

PC 3436



Train Line

44850

44820

11799