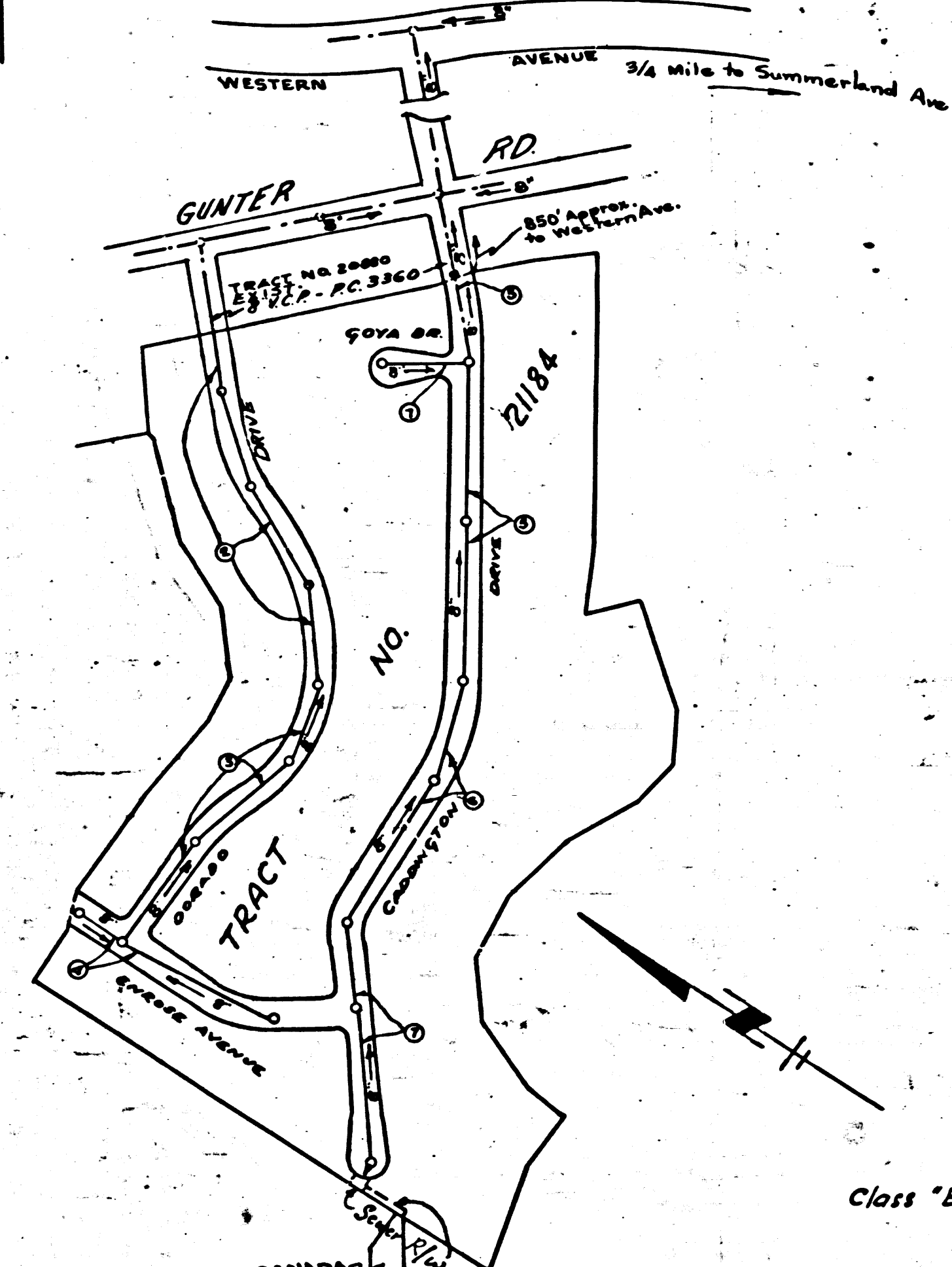


3439
E 2
SCALE

FOR
ONES

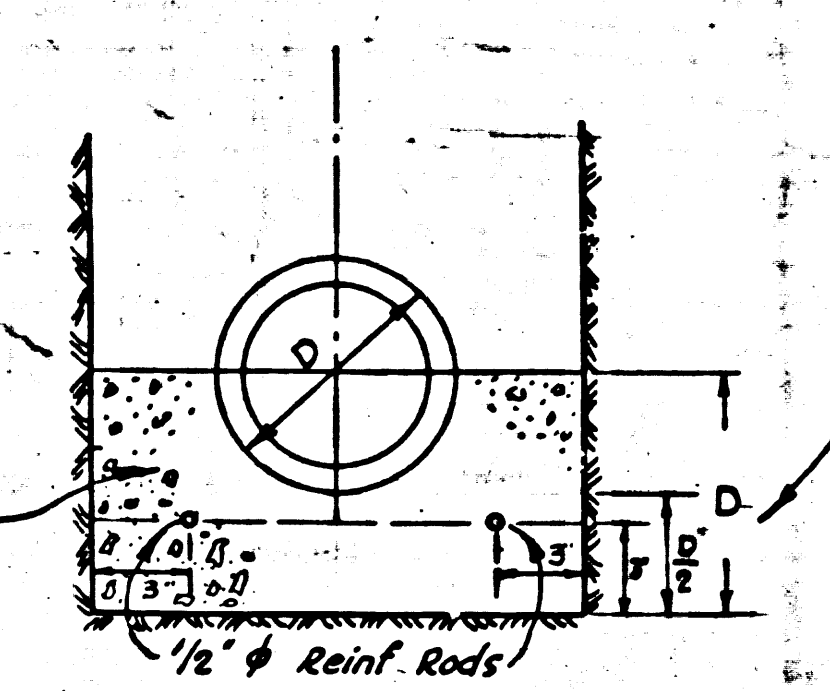
LOS ANGELES COUNTY SURVEYORS B.M. 35-6
P.S. 1354 P.S. 12
SAN PEDRO, ON APPROX. E^{1/2} OF WESTERN AVE.
ABOUT 96 FT. N. OF CHANNEL DRIVE, IN PAINTED
PEDESTRIAN CROSS WALK A 6" NERAGON BALL
SET IN CONCRETE 8 INCHES BELOW THE SURFACE
AND PROTECTED BY A CAST IRON COVER MARK-
ED "CITY L.A. MONUMENT ENGINEERING" WITH "SR
118-64" PAINTED ON PAVEMENT
1953 ADJ. ELEV. 2876)



PC. 3439 TRACT NO. 21184
KEY MAP
SCALE 1"=300'

SHT.	PAGE
1	1-8
2	6-7

NO CHARGE FOR
CONNECTION
See Section 96-55



CRADLE DETAIL
NO SCALE

Trim Line

LOMITA BLDG. DIST. NO. 7L

NOTE:
Provide stakes on the property lines or property lines produced at right angles to the sewer line at the center line of each manhole.
No representative of the County Engineer will survey or layout any portion of the work.
The owner or his authorized representative shall furnish the County Engineer with grade sheets and stations for all house laterals and Y branches and shall provide stakes for them at their proper locations with stationing plainly marked. Any change in location shall be requested in writing by the owner or his representative.
No revisions shall be made in these plans without the approval of the County Engineer.

1. Use standard manhole frames and covers, S-a-117.
2. Use standard strength pipe except as noted.
3. Use cement mortar for all vitrified clay pipe joints, except as noted.
4. Resurface all trench within paved area to meet L.A. County Road Dept. or California State Highway Dept. requirements in accordance with permit.
5. Encase four feet of sewer at points of interference with poles, S-a-119.
6. House laterals to be constructed with inverts at property line 6 feet below curb grade except as noted.
7. All structures shall be brick sewer structures, S-a-104.
8. For allowable leakage test, use Formula No. 1, Spec's., Sec. 51.
9. (a) No construction will be permitted in filled areas unless acceptable certification is submitted to the Construction Division of the County Engineer's Department that compaction is greater than 80%.
(b) If compaction is less than 90%, the sewer must be cradled as shown on the plans. (See detail at left.)
(c) If compaction is greater than 90%, cradling is not required. However, joint compound must be substituted for cement mortar for all joints in filled areas.

checked 12-22-55 *W. L. ...*

Trim Line

(15)

PROFILE, ALIGNMENT AND GRADE OF
SANITARY SEWERS
TO BE CONSTRUCTED IN

P.C. 3439
PAGE 1

TRACT NO. 21184

(21,981)

PRIVATE CONTRACT NO. 3439
W. S. 28

2 SHEETS
Scale: VERT. 1"=4'
HORIZ. 1"=40'
MARCH 1955

PREPARED IN THE OFFICES OF
NATIONAL ENGINEERING & SURVEYING SERVICE CO.

Edmund J. Epperson
Reg. C.E. No. 5228

FOR LEGEND SEE PLAN NO. S-a-64

NOTE:
Grades to which this improvement is to be constructed are shown on plans and profiles. Grade points for top of curbs, center line of streets, or center line of alleys are shown by circles on profiles. At all points between designated points the grade shall be established so as to conform to a straight line drawn between said designated points.
Elevations are in feet above U.S.G.S. datum or mean sea level.
This drawing and the data hereon are hereby made a part of the specifications.
Work shall be constructed according to specifications on file in the office of the County Engineer and shall be prosecuted only in the presence of the County Engineer.
Before work can be started, the contractor must obtain a permit to excavate in County streets from the L.A. County Road Dept., 108 W. 2nd St. and make a deposit with the County Engineer, 218 324, 253 So. Broadway, sufficient to cover the cost of construction inspection and record plans.
Approval of this plan by the County of Los Angeles does not constitute a representation as to the accuracy of the location of or the existence or non-existence of any underground utility, pipe, or structure within the limits of this project. This note applies to all sheets.
If work is to be done in a State Highway, a permit must be obtained from the State of California, Division of Highways, 120 South Spring Street.

COUNTY OF LOS ANGELES, CALIFORNIA
Approved, William J. Fox, County Engineer
Approved, A. M. Rawn
CHIEF ENGINEER SAN. DIST. NO. 5
W. J. Collins *A. M. Rawn*
Substation Engineer Office Engineer
Checked by *R. S. Kuhn* 9-8-55
Office of County Engineer, Reg. C. E. No. 1860

Page Trim Line
TRACT NO. 21184
PC 3439

P.C. 3439
PAGE 4
DOUBLE SCALE

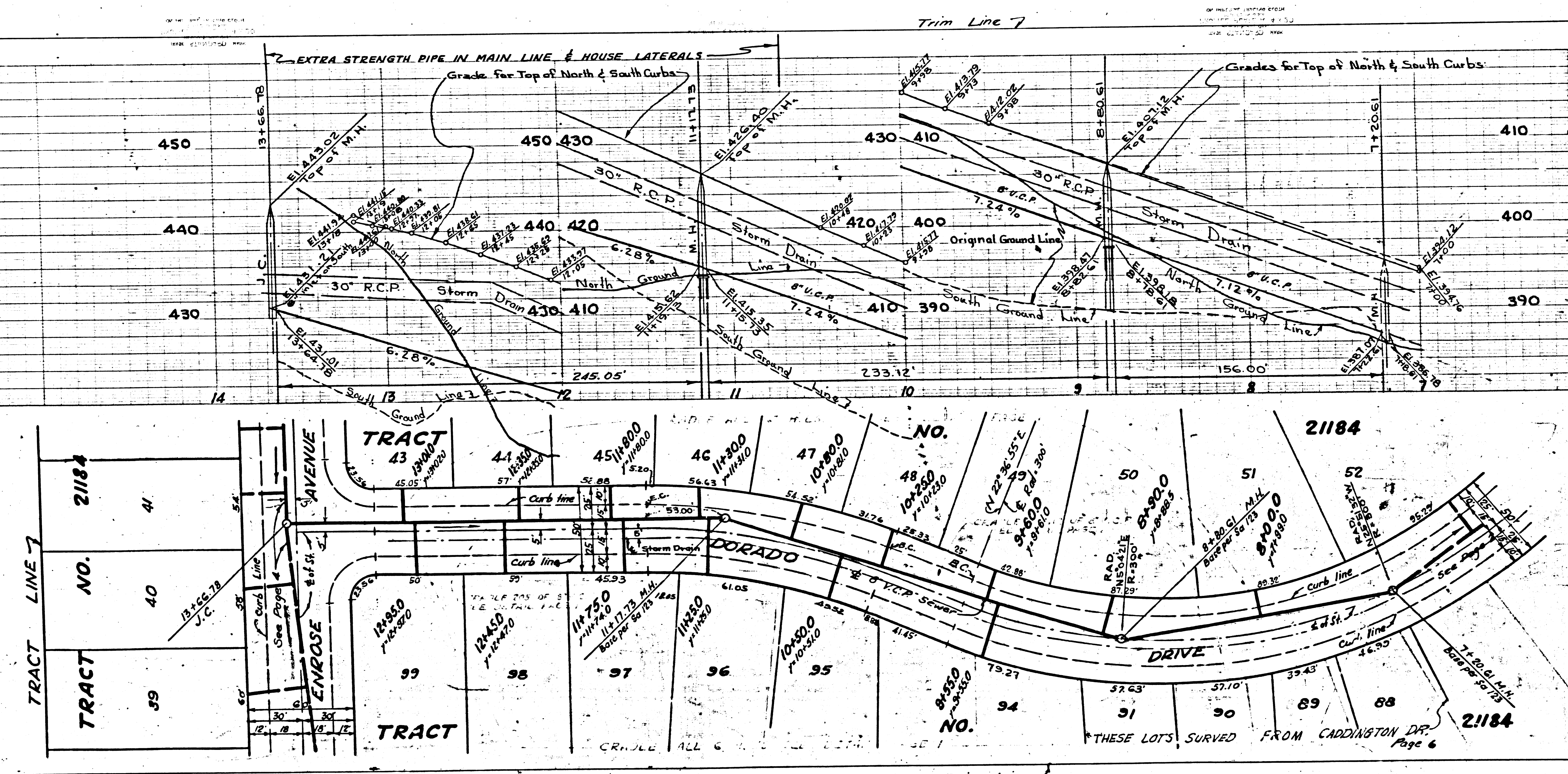
NO CHARGE FOR
CONNECTIONS

21,984

P.C. 3439
PAGE 3
DOUBLE SCALE

NO CHARGE FOR
CONNECTIONS

21,983



3

P.C. 3439
PAGE 5
DOUBLE SCALE

NO CHARGE FOR CONNECTIONS

21,985

EXTRA STR. PIPE IN
MAIN LINE &
HOUSE LATERALS

(B)

(3)

(A)

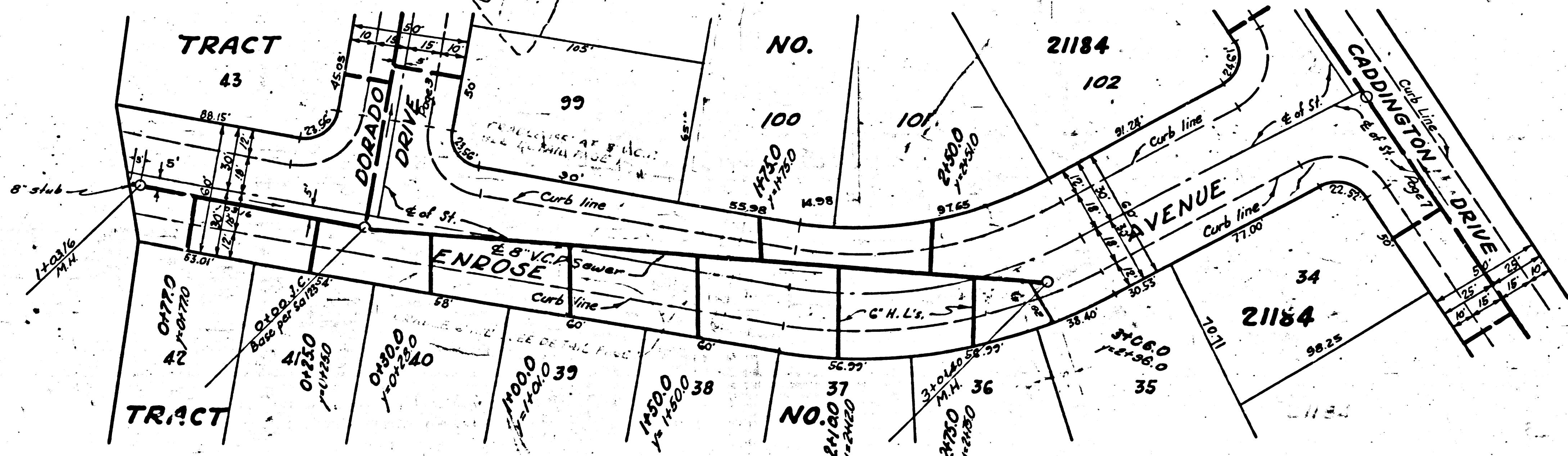
Trim Line 7

(A)

P.C. 3439
PAGE 4
DOUBLE SCALE

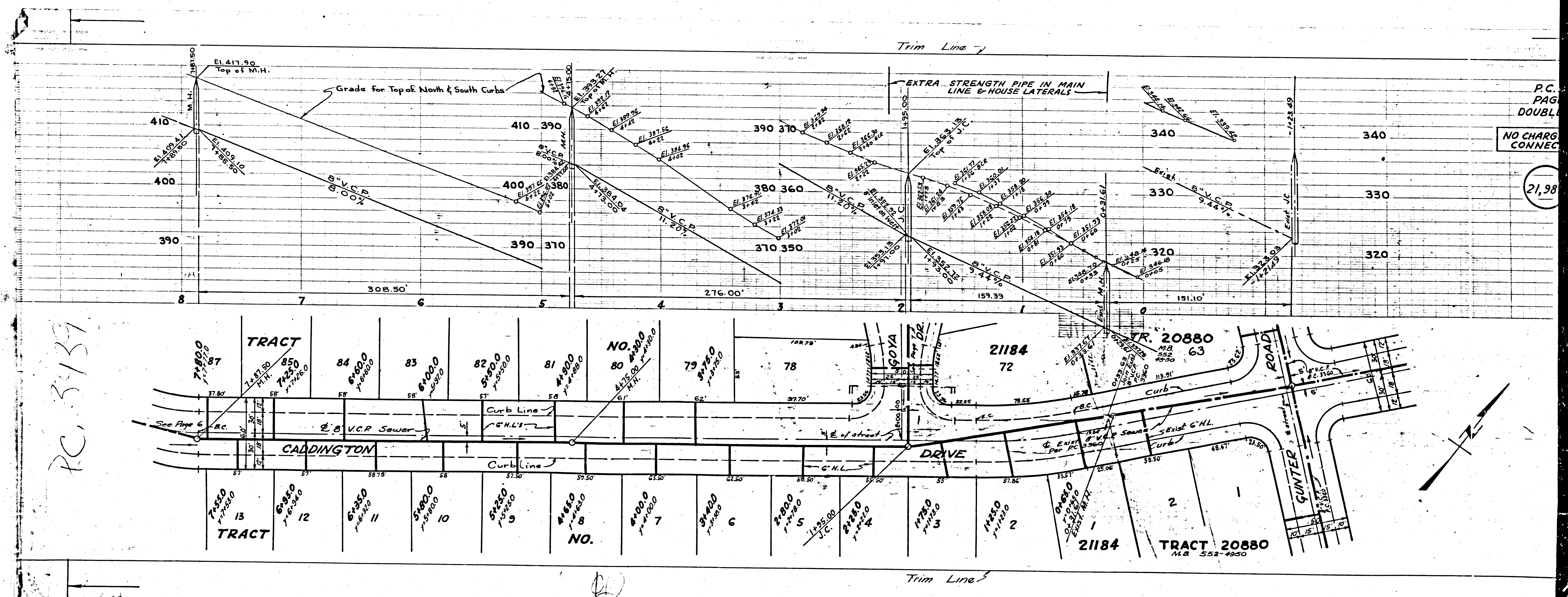
NO CHARGE FOR CONNECTIONS

21,984



(2)

Trim Line



PC 34139

P.C.
PAGE
DOUBL
NO CHARG
CONNEC
21,98

