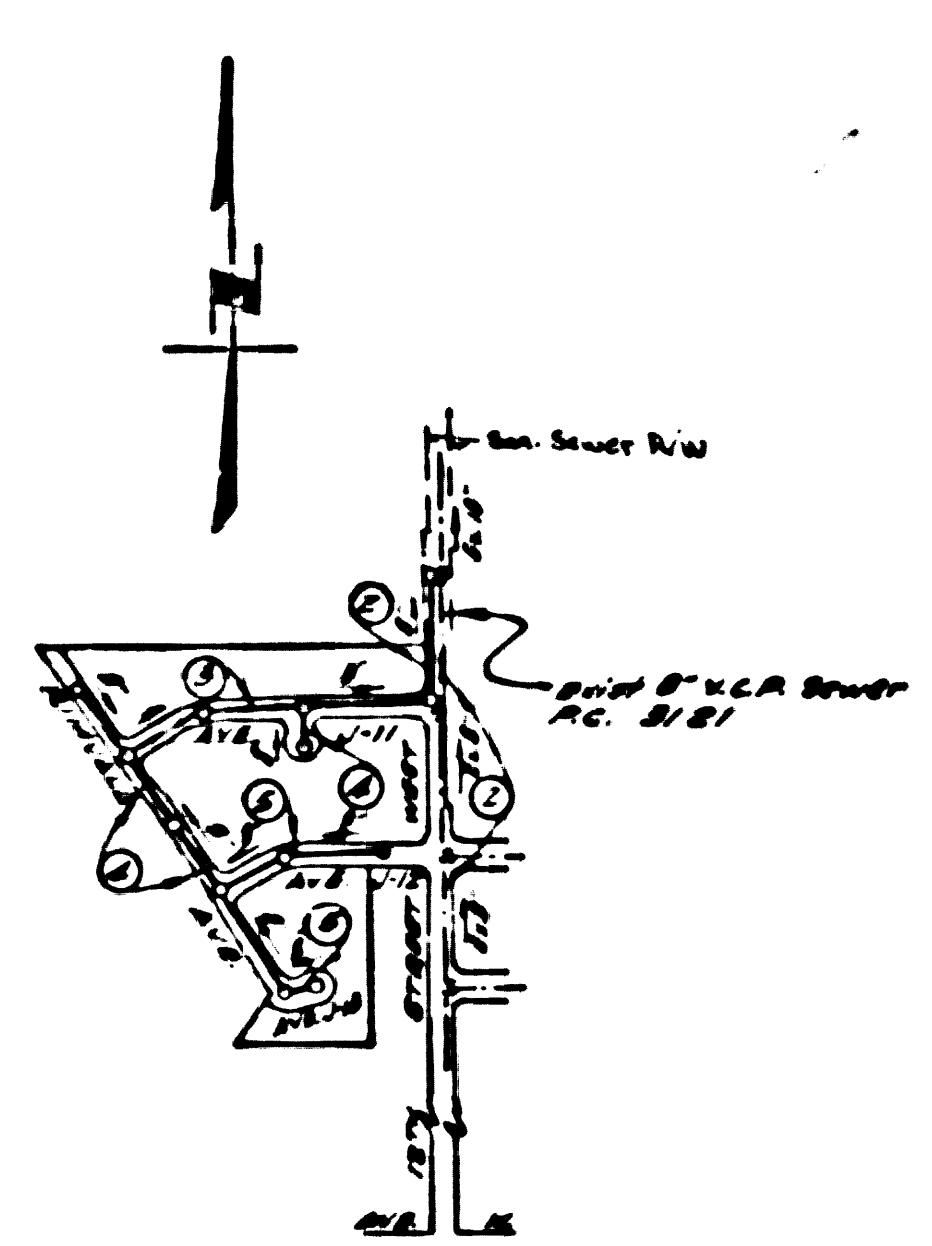


BRANCH MARK
 C.S. Monument of S.E. cor. of Young Reynolds
 Park 2' x 2' with brass cap marked E.E. 2177
 per C.S.P.M. 204, Page 214. File 1871.201



INDEX MAP
 TRACT NO 21191
 AC 8.441
 24,187 17 x 600'

LANCASTER BLDG. DIST. NO. 8

- NOTES**
- PROVIDE STAKES ON THE PROPERTY LINE OR PROPERTY LINES PRODUCED AT RIGHT ANGLES TO THE SEWER LINE AT THE CENTER LINE OF EACH MANHOLE.
 - NO REPRESENTATIVE OF THE COUNTY ENGINEER WILL SURVEY OR LAYOUT ANY PORTION OF THE WORK.
 - THE OWNER OR HIS AUTHORIZED REPRESENTATIVE SHALL FURNISH THE COUNTY ENGINEER WITH GRADE SHEETS AND STATION FOR ALL HOUSE LATERALS AND Y BRANCHES AND SHALL PROVIDE STAKES FOR THEM AT THEIR PROPER LOCATIONS WITH STATIONING PLAINLY MARKED. ANY CHANGE IN LOCATION SHALL BE REQUESTED IN WRITING BY THE OWNER OR HIS REPRESENTATIVE.
 - NO REVISIONS SHALL BE MADE IN THESE PLANS WITHOUT THE APPROVAL OF THE COUNTY ENGINEER.
 - USE STANDARD MANHOLE FRAMES AND COVERS, S.A. 117, EXCEPT AS NOTED.
 - USE STANDARD STRENGTH PIPE EXCEPT AS NOTED.
 - USE CEMENT MORTAR FOR ALL VITRIFIED CLAY PIPE JOINTS.
 - RESURFACE ALL TRENCH WITHIN PAVED AREA TO MEET L.A. COUNTY ROAD DEPT. OR CALIF. STATE HIGHWAY DEPT. REQUIREMENTS IN ACCORDANCE WITH PERMITS.
 - ENCASE FOUR FEET OF SEWER AT POINTS OF INTERFERENCE WITH POLES, S.A. 119.
 - HOUSE LATERALS TO 8" CONSTRUCTED WITH INVERTS AT PROPERTY LINE 6 FEET BELOW CURB GRADE EXCEPT AS NOTED.
 - ALL STRUCTURES SHALL BE BRICK SEWER STRUCTURES, S.A. 104, EXCEPT AS NOTED.
 - FOR ALLOWABLE LEAKAGE TEST USE FORMULA NO. 1 PER D.C.S. SEC. 54.
 - MANHOLE TOPS IN UNIMPROVED RIGHTS-OF-WAY TO BE 6" ABOVE FINISHED GRADE.
 - CALL ALL PIPE JOINTS WITH 6" CEMENT MORTAR THAT ARE WITHIN 20' OF ALL PROPERTY LINES OR IN SANITARY SEWER RIGHT OF WAY.
 - THE PRIVATE ENGINEER IS TO FURNISH THE HOUSE LATERAL DEPTH AT THE PROPERTY LINE BELOW THE TOP OF CURB ELEVATION FOR EACH HOUSE LATERAL, ON THE GRADE SHEET.

CONNECTION CHARGES AS INDICATED
 SK Oida 8-9-56

PROFILE ALIGNMENT AND GRADE OF **P.C. 3441**
SANITARY SEWERS PAGE **1**
 TO BE CONSTRUCTED IN
TRACT NO 21191 (24,187)
PRIVATE CONTRACT NO. 3441 (5)

W.S. 71
 3 SHEETS; 5 PAGES
 SCALE: VERT. 1" = 4'
 HORIZ. 1" = 40' JUNE, '56
 PREPARED IN THE OFFICES OF
SECURITY ENGINEERING CO.
 711 N. VERMONT AVE., NO. 8326
 LOS ANGELES 28, CALIFORNIA
 BY: **Ralph C. Oller**
RALPH E. BOLLES REG. C.E. NO. 8392
 FOR LEGEND SEE PLAN NO. S-A-64

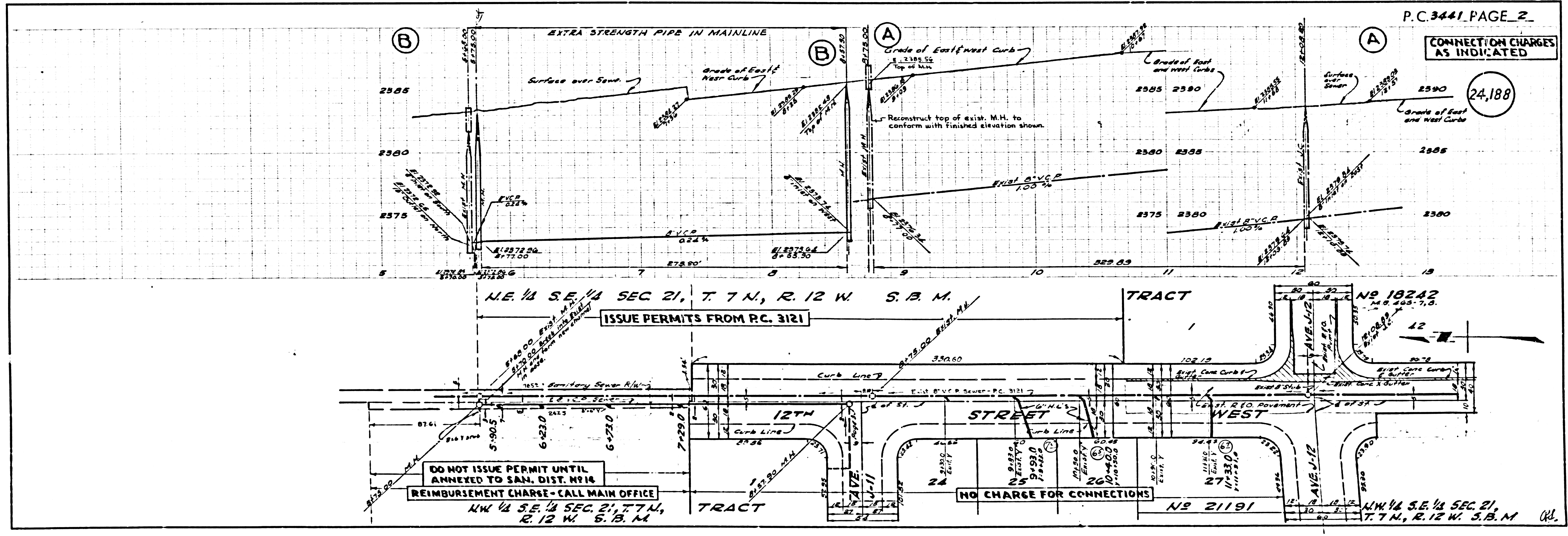
NOTE:
 GRADES TO WHICH THIS IMPROVEMENT IS TO BE CONSTRUCTED ARE SHOWN ON PLANS AND PROFILES. GRADE POINTS FOR TOP OF CURBS, CENTER LINE OF STREETS, OR CENTER LINE OF ALLEYS ARE SHOWN BY CIRCLED OR PROFILES AT ALL POINTS BETWEEN DESIGNATED POINTS. THE GRADE SHALL BE ESTABLISHED SO AS TO CONFORM TO A STRAIGHT LINE DRAWN BETWEEN SAID DESIGNATED POINTS.
 ELEVATIONS ARE IN FEET ABOVE U.S.C. & G.S. SEA LEVEL DATUM OF 1929.
 THIS DRAWING AND THE DATA HEREON ARE HEREBY MADE A PART OF THE SPECIFICATIONS.
 WORK SHALL BE CONSTRUCTED ACCORDING TO SPECIFICATIONS ON FILE IN THE OFFICE OF THE COUNTY ENGINEER AND SHALL BE PROSECUTED ONLY IN THE PRESENCE OF THE COUNTY ENGINEER.
 BEFORE WORK CAN BE STARTED, THE CONTRACTOR MUST OBTAIN A PERMIT TO EXCAVATE IN COUNTY STREETS FROM THE L.A. COUNTY ROAD DEPT. 100 W. 10TH ST AND MAKE A DEPOSIT WITH THE COUNTY ENGINEER, ROOM 124 FARM AMERICAN BUILDING 333 SO. BROADWAY SUFFICIENT TO COVER THE COST OF CONSTRUCTION INSPECTION AND RECORD PLANS.
 APPROVAL OF THIS PLAN BY THE COUNTY OF LOS ANGELES DOES NOT CONSTITUTE A REPRESENTATION AS TO THE ACCURACY OF THE LOCATION OF OR THE EXISTENCE OR NON-EXISTENCE OF ANY UNDERGROUND UTILITY PIPE, OR STRUCTURE WITHIN THE LIMITS OF THIS PROJECT. THIS NOTE APPLIES TO ALL GRADES.
 IF WORK IS TO BE DONE IN A STATE HIGHWAY, A PERMIT MUST BE OBTAINED FROM THE STATE OF CALIFORNIA, DIVISION OF HIGHWAYS, 120 SOUTH SPRING STREET.

COUNTY OF LOS ANGELES, CALIFORNIA
 APPROVED, JOHN A. LAMBIE, COUNTY ENGINEER
 APPROVED, A. M. BAWN, CHIEF ENGINEER
 BY: **R. C. Oller** (SANITATION ENGINEER)
 BY: **R. C. Oller** (OFFICE ENGINEER)
 CHECKED BY: **SK Oida 8-9-56**
 OFFICE OF COUNTY ENGINEER, REG. C.E. NO. 3406

P.C. 3441 PAGE 2

CONNECTION CHARGES AS INDICATED

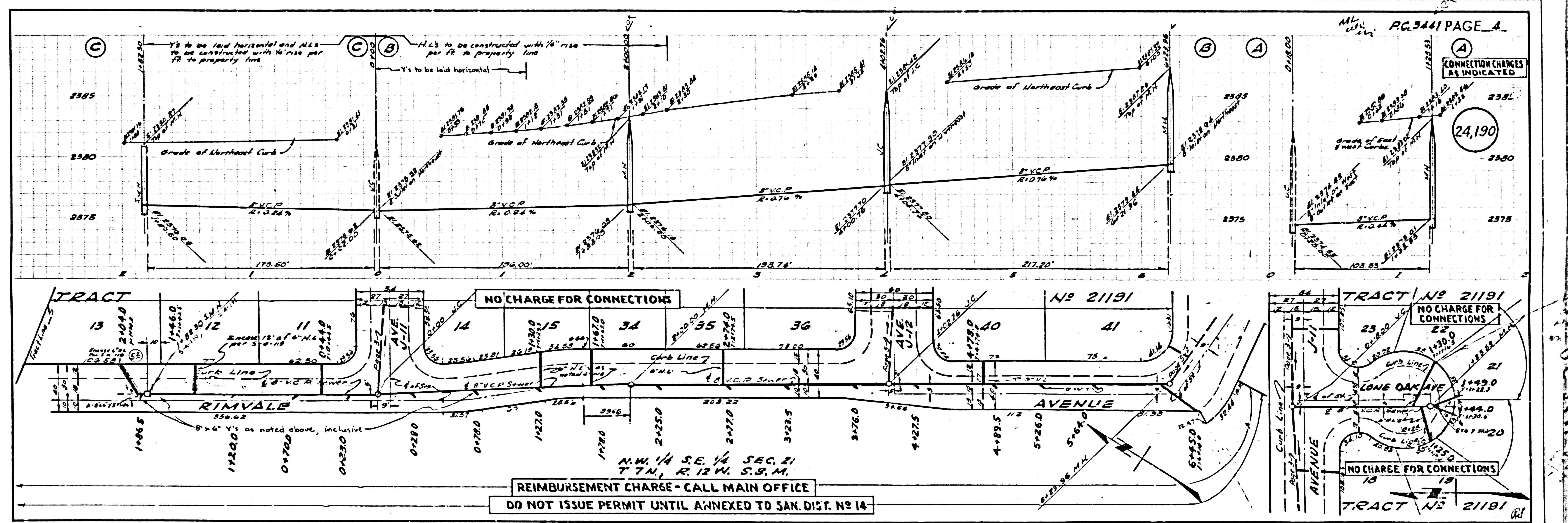
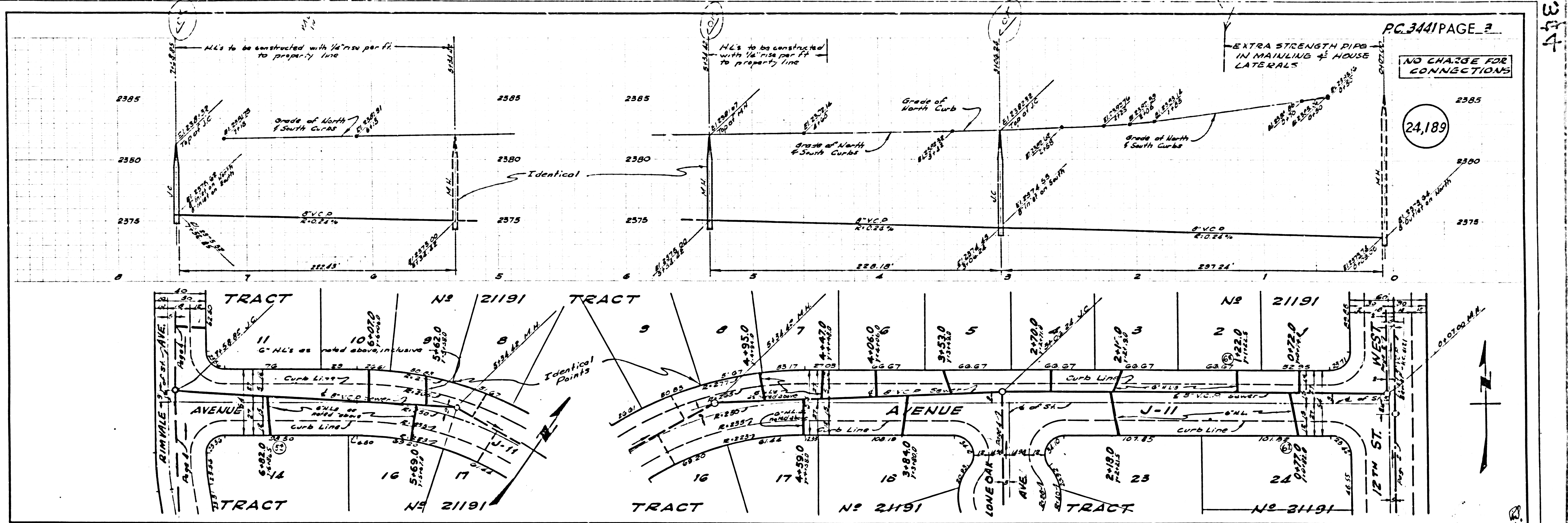
(24,188)



DO NOT ISSUE PERMIT UNTIL ANNEXED TO SAN. DIST. NO 16
REIMBURSEMENT CHARGE - CALL MAIN OFFICE

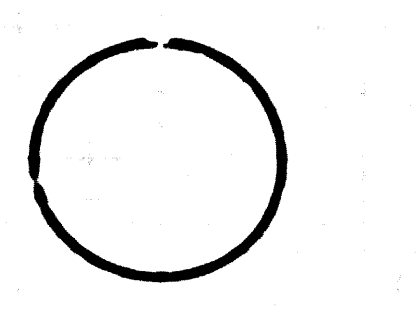
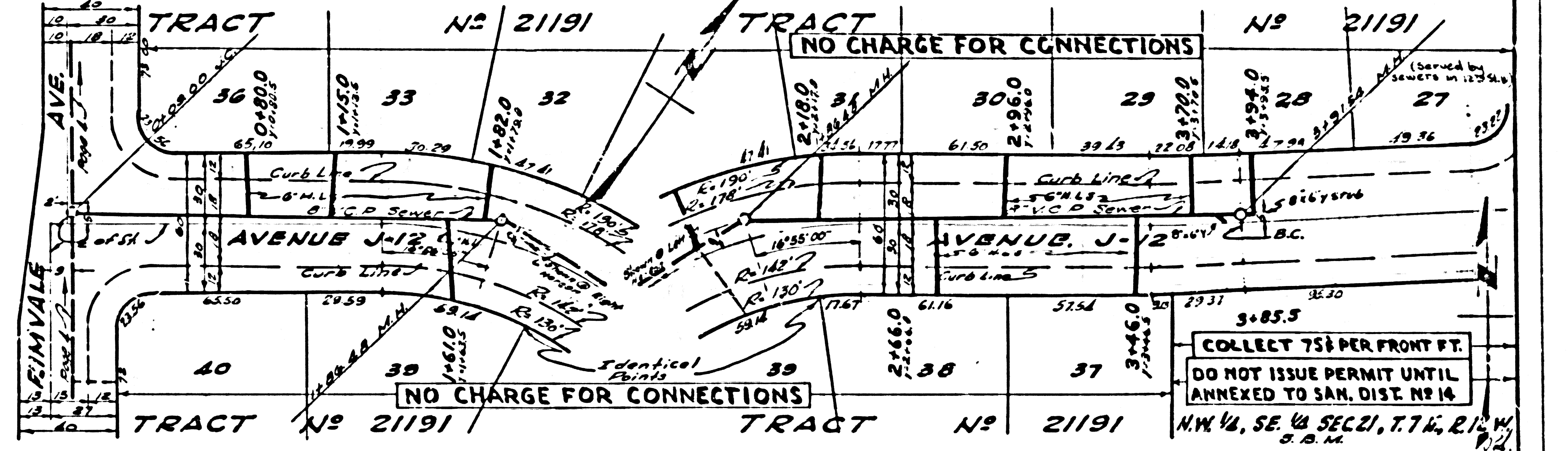
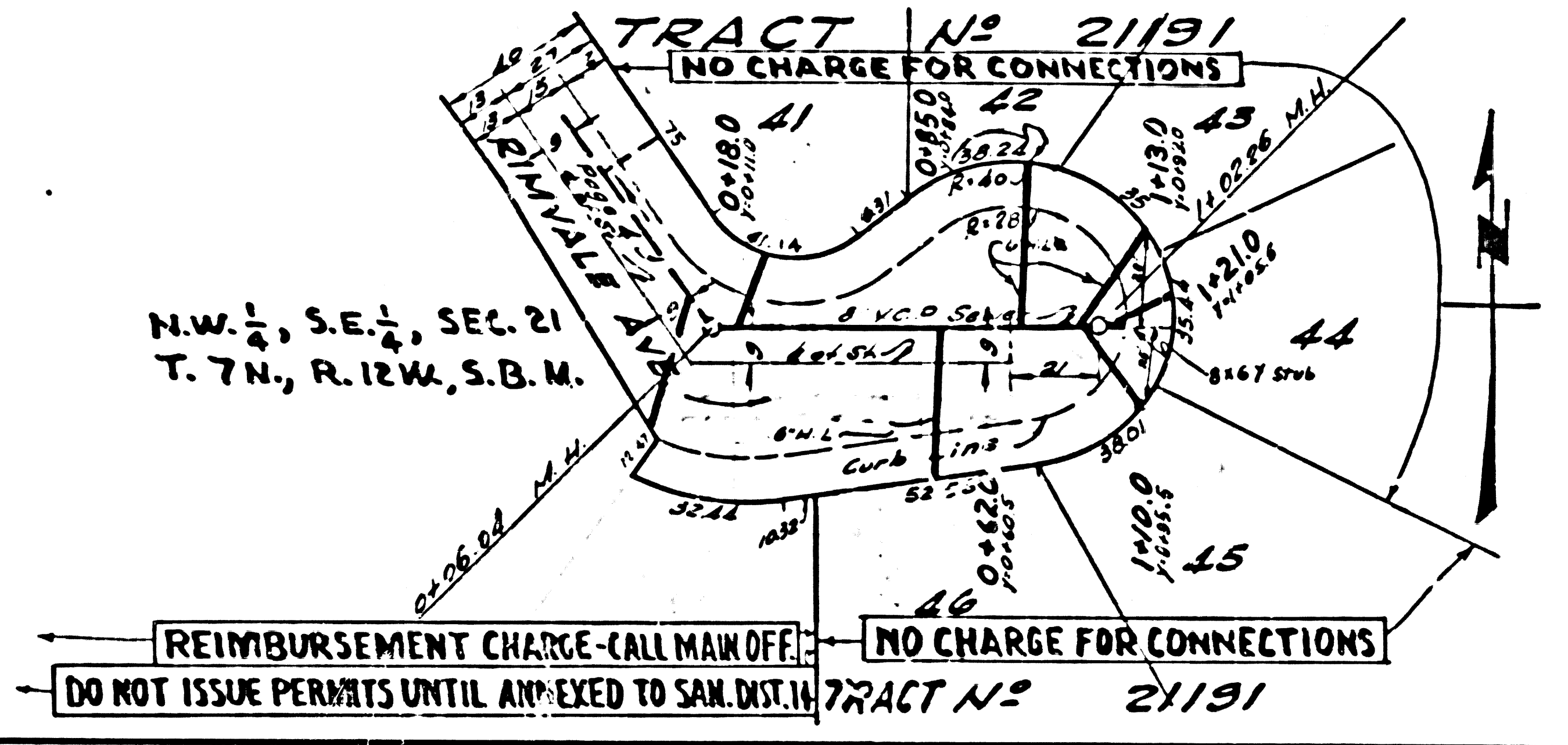
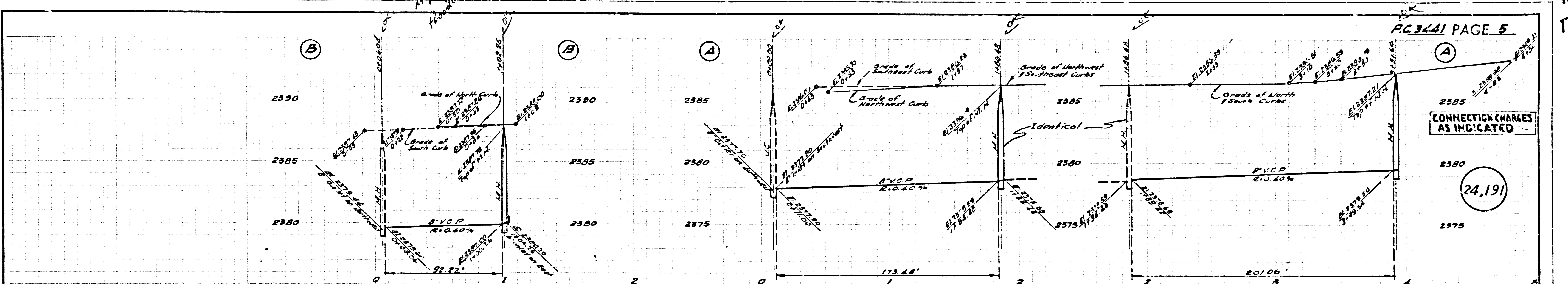
NO CHARGE FOR CONNECTIONS

ISSUE PERMITS FROM P.C. 3121



W
4

125
19



R.L.