

P.C. 3444
PAGE 2

21,746

365

CHARGE FOR
CONVECTIONS

360

355

VC 27

0807

VC 27

VC 27

VC 27

VC 27

VC 27

VC 27

VC 27

VC 27

VC 27

VC 27

VC 27

VC 27

VC 27

VC 27

VC 27

VC 27

VC 27

VC 27

VC 27

VC 27

VC 27

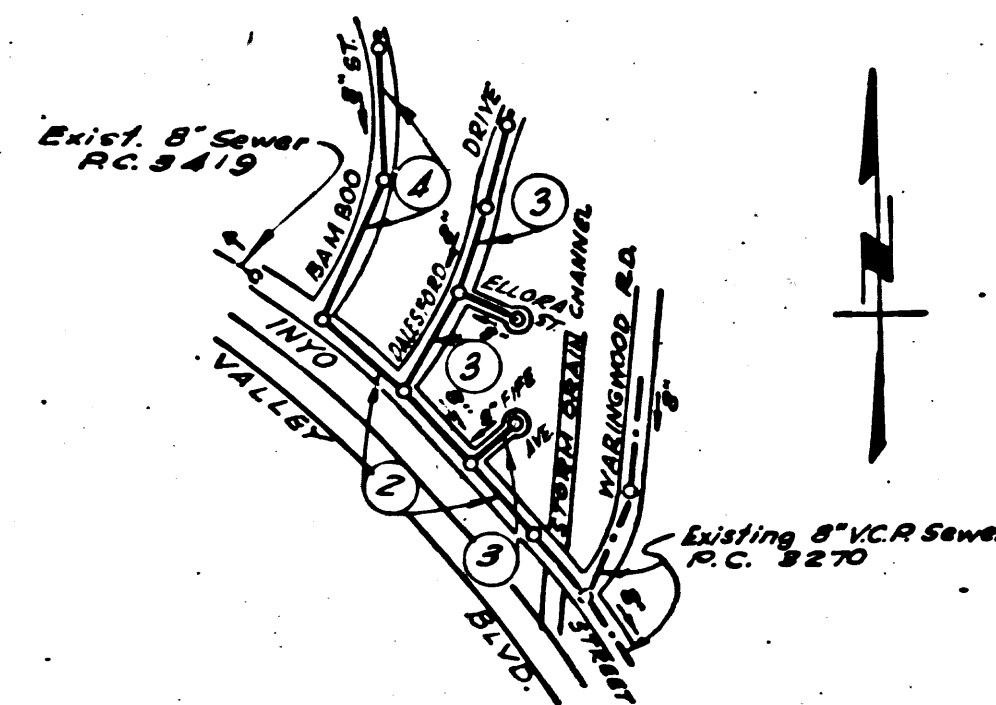
VC 27

VC 27

VC 27

VC 27

B.M. - L.B. # 37 Page 190 B.M. G.A. L & N in
concrete walk near steps to porch @ House # 542
47'± West & Baja Avenue; 39'± South &
Central Avenue. Elev. 353.975



INDEX MAP
TRACT No 21437
SCALE: 1" = 600'
P.C. 3444

Trim Line
PUENTE BLDG. DIST. No 2

- NOTE:
- Provide stakes on the property lines or property lines produced at right angles to the sewer line at the center line of each manhole.
 - No representative of the County Engineer will survey or layout any portion of the work.
 - The owner or his authorized representative shall furnish the County Engineer with grade sheets and stations for all house laterals and Y branches and shall provide stakes for them at their proper locations with stationing plainly marked. Any change in location shall be requested in writing by the owner or his representative.
 - No revisions shall be made in these plans without the approval of the County Engineer.
 - Use standard manhole frames and covers, S-a-117.
 - Use standard strength pipe.
 - Use cement mortar for all vitrified clay pipe joints.
 - Resurface all trench within paved area to meet L.A. County Road Dept. or California State Highway Dept. requirements in accordance with permit.
 - Encase four feet of sewer at points of interference with poles, S-a-119.
 - House laterals to be constructed with inverts at property line... 6 feet below curb grade.
 - All structures shall be brick sewer structures, S-a-104.
 - For allowable leakage test, use Formula No. 7, Spec's., Sec. 51.
 - Manhole tops in unimproved Rights-Of-Way to be 6" above finish grade.

Sheet No	Pages
1	1-4

CONNECTION CHARGES
AS INDICATED
L. Curtis 7-28-55

Checked 11-9-55 *W. Brown*

PROFILE, ALIGNMENT AND GRADE OF
SANITARY SEWERS
TO BE CONSTRUCTED IN

TRACT No 21437

PRIVATE CONTRACT NO. 3444
W. S. 33
ONE SHEET

Scale: VERT. 1" = 40' HORIZ. 1" = 40' MARCH 1955

PREPARED UNDER THE
SUPERVISION OF

Robert G. Sebring
San. En. No. 8109

FOR LEGEND SEE PLAN NO. S-a-64

NOTE:

Grades to which this improvement is to be constructed are shown on plans and profiles. Grade points for top of curbs, center line of streets, or center line of alleys are shown by circles on profiles. At all points between designated points the grade shall be established so as to conform to a straight line drawn between said designated points.

Elevations are in feet above U.S.G.S. datum or mean sea level.

This drawing and the data hereon are hereby made a part of the specifications.

Work shall be constructed according to specifications on file in the office of the County Engineer and shall be prosecuted only in the presence of the County Engineer.

Before work can be started, the contractor must obtain a permit to excavate in County streets from the L.A. County Road Dept., 108 W. 2nd St. and make a deposit with the County Engineer, 253 South Broadway, Room 324, sufficient to cover the cost of construction inspection and record plans.

Approval of this plan by the County of Los Angeles does not constitute a representation as to the accuracy of the location of or the existence or non-existence of any underground utility, pipe, or structure within the limits of this project. This note applies to all sheets.

If work is to be done in a State Highway, a permit must be obtained from the State of California, Division of Highways, 120 South Spring Street.

COUNTY OF LOS ANGELES, CALIFORNIA

Approved, William J. Fox, County Engineer

Approved, A. M. Rawlin
CHIEF ENGINEER SAN DIST. NO. 21

By *G. P. Collins* Sanitation Engineer

Checked by *R. K. ...* 7-28-55
Office of County Engineer, Dep. C. E. No. 7860

P.C. 3444
PAGE 1

21,745

TRACT No 21437

P.C. 3444
PAGE 1

P.C. 3444
PAGE 3

147

NO CHARGE FOR CONNECTIONS

N^o 21437

N^o 21437

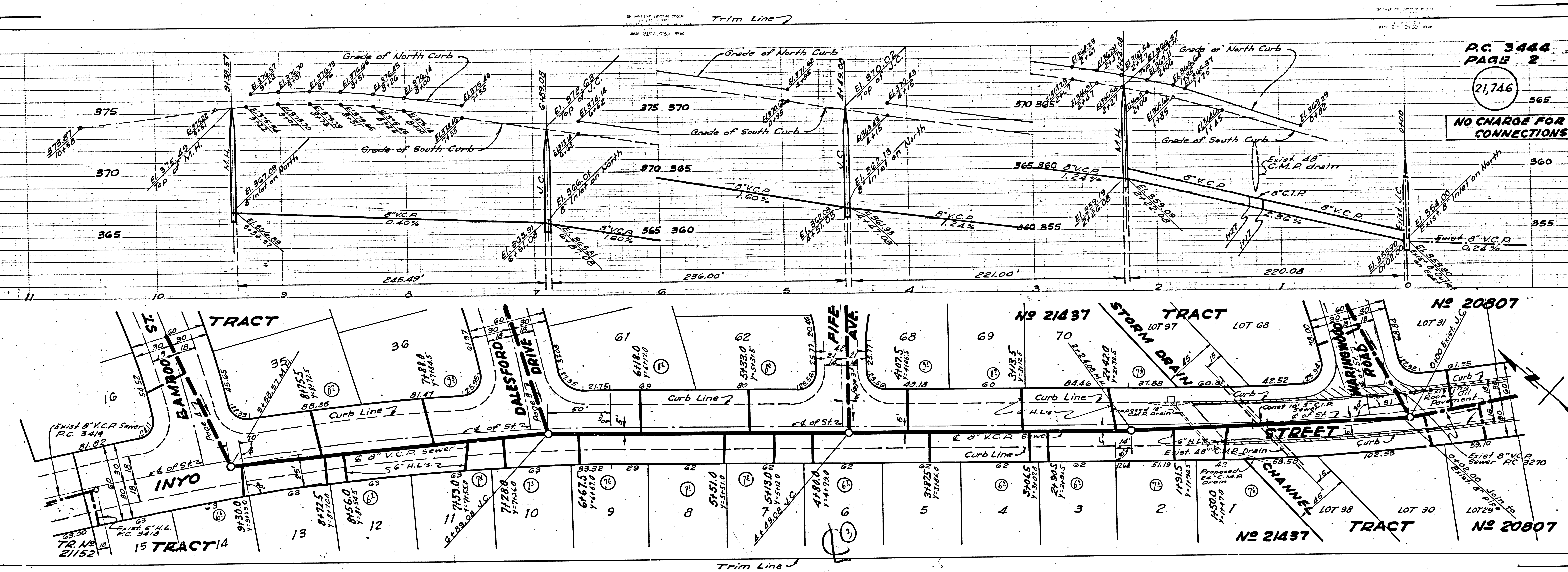
P.C. 3444
PAGE 2

21,746

NO CHARGE FOR CONNECTIONS

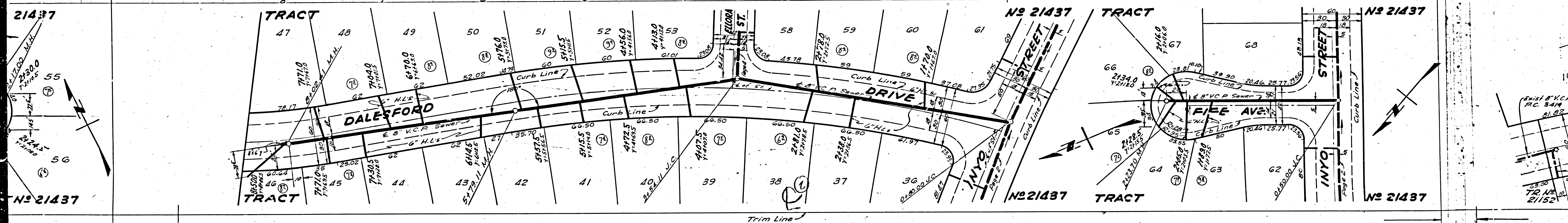
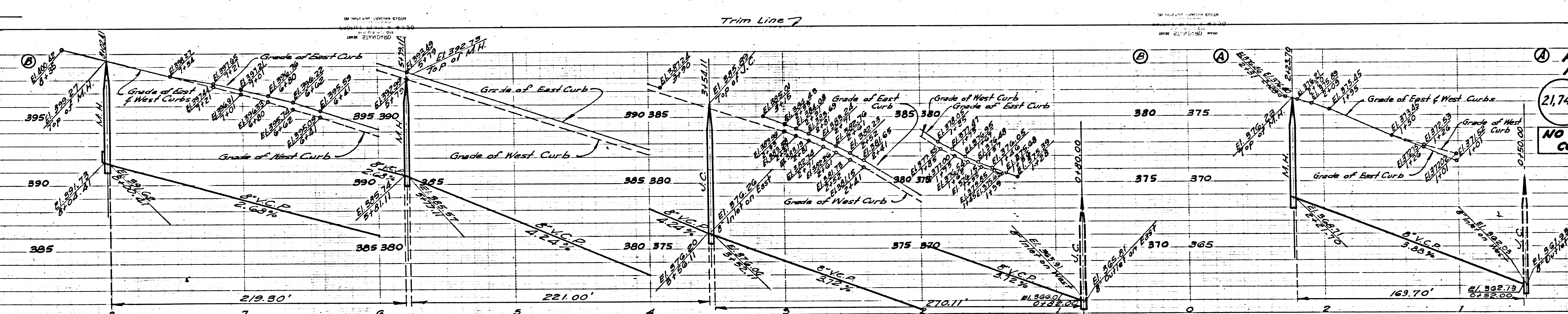
N^o 20807

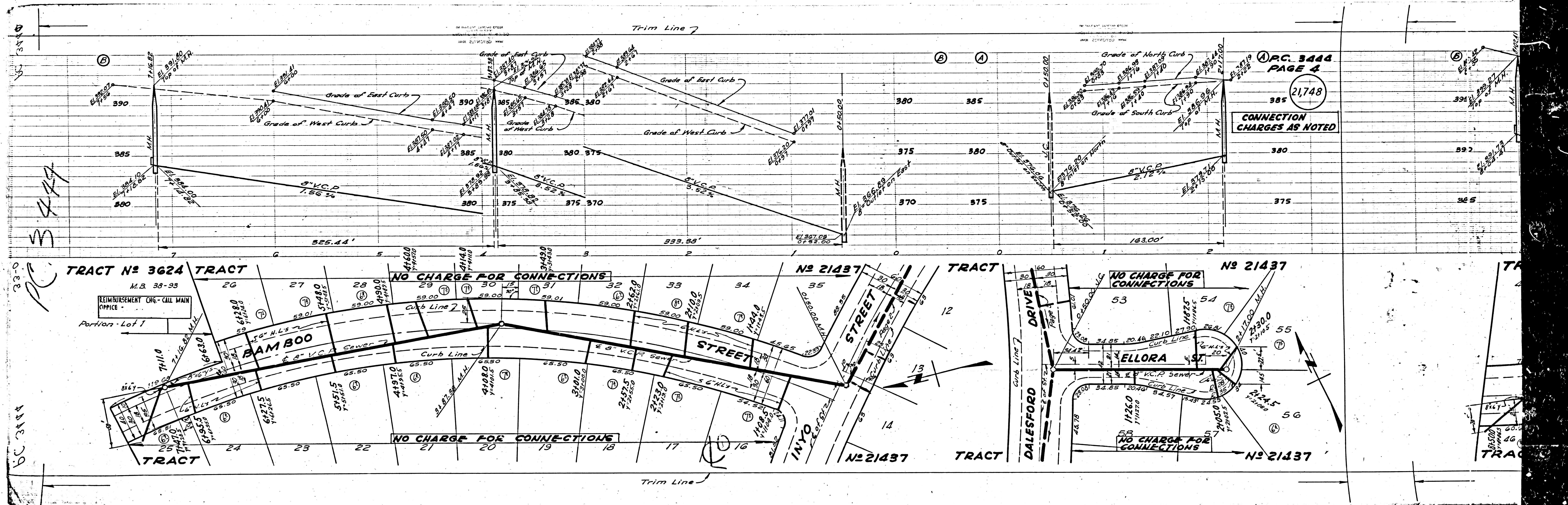
N^o 20807



PC. 3444
PAGE 4
21,748
CONNECTION
CHARGES AS NOTED

PC. 3444
PAGE 3
21,747
NO CHARGE FOR
CONNECTIONS





PC 3444

BC 3444

TRACT No 3624 TRACT

No 21437 TRACT

No 21437 TRACT

M.B. 38-93

REIMBURSEMENT CHG - CALL MAIN OFFICE

Portion Lot 1

BAMBOO STREET

ELLORA STREET

INOYO STREET

DALESFORD DRIVE

NO CHARGE FOR CONNECTIONS

NO CHARGE FOR CONNECTIONS

NO CHARGE FOR CONNECTIONS

Trim Line