

PC 3446  
 PAGE 2  
 ON CHARGES  
 ATED  
 20,241

DM. P-39 E.I. 176.421 FB. 1226 Pg. 8  
 Verner St. & Lindsay Ave. S.E. Cor.  
 LAT in M.C.R.

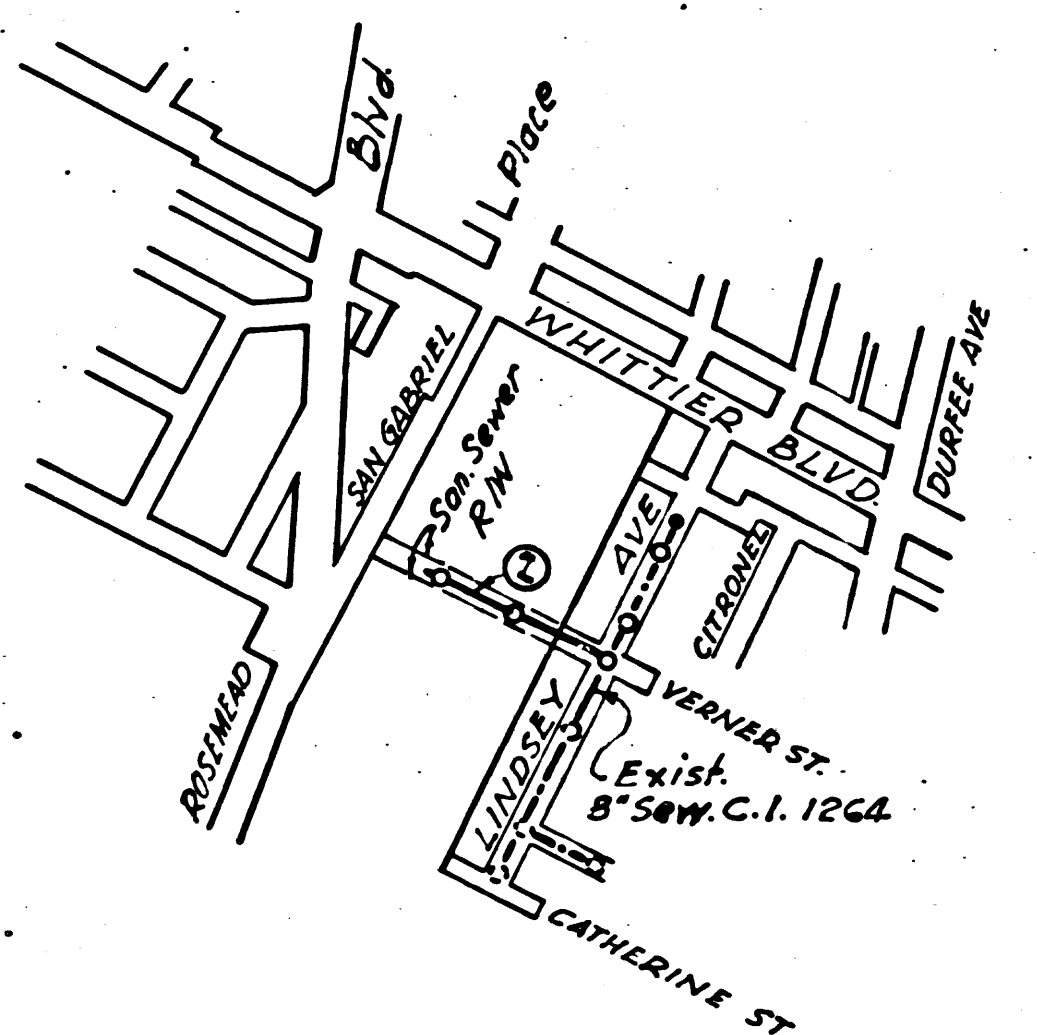
**WHITTIER BLDG DIST. NO 11**  
**NOTE:**

- Provide stakes on the property lines or property lines produced at right angles to the sewer line at the center line of each manhole.
- No representative of the County Engineer will survey or layout any portion of the work.
- The owner or his authorized representative shall furnish the County Engineer with grade sheets and stations for all house laterals and Y branches and shall provide stakes for them at their proper locations with stationing plainly marked. Any change in location shall be requested in writing by the owner or his representative.
- No revisions shall be made in these plans without the approval of the County Engineer.
1. Use standard manhole frames and covers, S-a-117.
  2. Use standard strength pipe
  3. Use cement mortar for all vitrified clay pipe joints.
  4. Resurface all trench within paved area to meet L.A. County Road Dept. or California State Highway Dept. requirements in accordance with permit.
  5. Encase four feet of sewer at points of interference with poles, S-a-119.
  6. House laterals to be constructed with inverts at property line 6 feet below curb grade except as noted.
  7. All structures shall be brick sewer structures, S-a-104.
  8. For allowable leakage test, use Formula No. 1, Spec's., Sec. 51.

TABLE

SHEET N <sup>o</sup>	PAGES
1	2

dated 4-27-55 W. H. Green



CONNECTION CHARGES  
 AS INDICATED  
 Rejected 4-18-55

INDEX MAP  
 SCALE: 1"=600'  
 PC. 3446

TRIM LINE

PROFILE, ALIGNMENT AND GRADE OF  
**SANITARY SEWERS**  
 TO BE CONSTRUCTED IN  
**VERNER STREET**  
 and a  
**SANITARY SEWER RIGHT OF WAY**

PAGE 1  
 PC 3446

20,240

PRIVATE CONTRACT NO. 3446  
 W. S. 36  
 (1) SHEET

Scale: VERT. 1"=4'  
 HORIZ. 1"=40'  
 MAR 1955

PREPARED IN THE OFFICES OF  
**LOVETT & HART**  
 Engineers & Surveyors.

By S. C. [Signature]  
 Reg. C. E. No. 7086  
 FOR LEGEND SEE PLAN NO. S-a-64

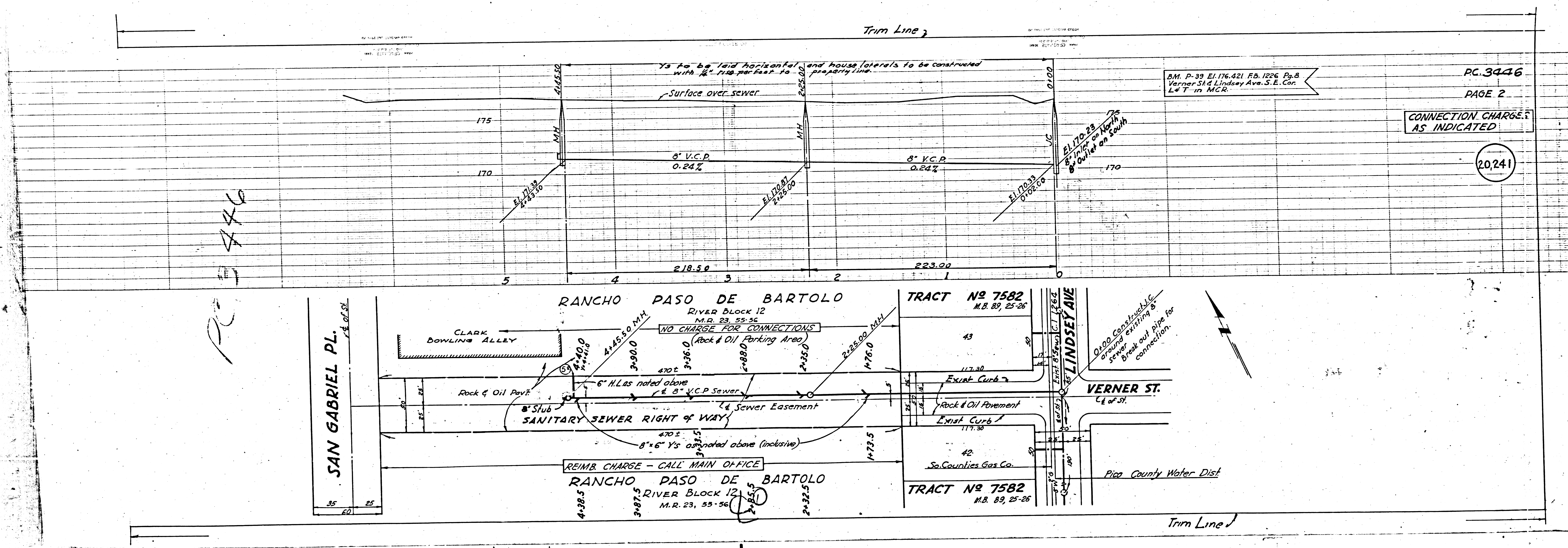
**NOTE:**  
 Grades to which this improvement is to be constructed are shown on plans and profiles. Grade points for top of curbs, center line of streets, or center line of alleys are shown by circles on profiles. At all points between designated points the grade shall be established so as to conform to a straight line drawn between said designated points.  
 Elevations are in feet above U.S.G.S. datum or mean sea level.  
 This drawing and the data hereon are hereby made a part of the specifications.  
 Work shall be constructed according to specifications on file in the office of the County Engineer and shall be prosecuted only in the presence of the County Engineer.  
 Before work can be started, the contractor must obtain a permit to excavate in County streets from the L.A. County Road Dept., 108 W. 2nd St. and make a deposit with the County Engineer, Room 204, 225 So. Broadway, sufficient to cover the cost of construction inspection and record plans.  
 Approval of this plan by the County of Los Angeles does not constitute a representation as to the accuracy of the location of or the existence or non-existence of any underground utility, pipe, or structure within the limits of this project. This note applies to all sheets.  
 If work is to be done in a State Highway, a permit must be obtained from the State of California, Division of Highways, 120 South Spring Street.

**COUNTY OF LOS ANGELES, CALIFORNIA**  
 Approved, William J. Fox, County Engineer  
 Approved, A. M. Rawn  
 CHIEF ENGINEER, SAN. DIST. NO. 2  
 By A. P. Collins Inspector  
 By [Signature] Office Engineer  
 Checked by: peh 4-18-55  
 Office of County Engineer, Reg. C. E. No. 7160

Trim Line

PC 3446  
 VERNER ST. EXT.





Trim Line

B.M. P-39 El. 176.421 F.B. 1226 Pg. 8  
 Verner St & Lindsey Ave. S.E. Cor.  
 L & T in MCR.

PC. 3446  
 PAGE 2

CONNECTION CHARGES  
 AS INDICATED

20,241

PC 3446

**RANCHO PASO DE BARTOLO**  
 RIVER BLOCK 12  
 M.R. 23, 55-56

**TRACT No 7582**  
 M.B. 89, 25-26

**SAN GABRIEL PL.**  
 C of St.

**CLARK BOWLING ALLEY**

**VERNER ST.**  
 C of St.

**LINDSEY AVE**

6" H.L.S. noted above  
 8" V.C.P. Sewer

8" Slub  
**SANITARY SEWER RIGHT OF WAY**

REIMB. CHARGE - CALL MAIN OFFICE

**RANCHO PASO DE BARTOLO**  
 RIVER BLOCK 12  
 M.R. 23, 55-56

So. Counties Gas Co.  
 Pico County Water Dist.

0.000 Const. used I.C.  
 around existing &  
 sewer.  
 Break out pipe for  
 connection.

Trim Line