

Trim Line

PUEUNTE BLDG. DIST. N^o 2

- NOTE:**
1. Provide stakes on the property lines or property lines produced at right angles to the sewer line at the center line of each manhole.
 2. No representative of the County Engineer will survey or layout any portion of the work.
 3. The owner or his authorized representative shall furnish the County Engineer with grade sheets and stations for all house laterals and Y branches and shall provide stakes for them at their proper locations with stationing plainly marked. Any change in location shall be requested in writing by the owner or his representative.
 4. No revisions shall be made in these plans without the approval of the County Engineer.
 5. Use standard manhole frames and covers, S-a-117.
 6. Use standard strength pipe except as noted.
 7. Use cement mortar for all vitrified clay pipe joints.
 8. Resurface all trench within paved area to meet L.A. County Road Dept. or California State Highway Dept. requirements in accordance with permit.
 9. Excise four feet of sewer at points of interference with poles, S-a-119.
 10. House laterals to be constructed with inverts at property line 6 feet below curb grade except as noted.
 11. All structures shall be brick sewer structures, S-a-104.
 12. For allowable leakage test, use Formula No. 1, Spec's., Sec. 51.
 13. Manhole tops in unimproved Rights-Of-Way to be 6" above finish grade.

PROFILE, ALIGNMENT AND GRADE OF
SANITARY SEWERS
 TO BE CONSTRUCTED IN
TRACT N^o 15555

PRIVATE CONTRACT NO. 3449
 W. S. 46
2 SHEETS

Scale: VERT. 1" = 40'
 HORIZ. 1" = 40'

MARCH 1955
 PREPARED IN THE OFFICES OF
HAROLD M. TEGART
 Reg. C. E. No. 2151

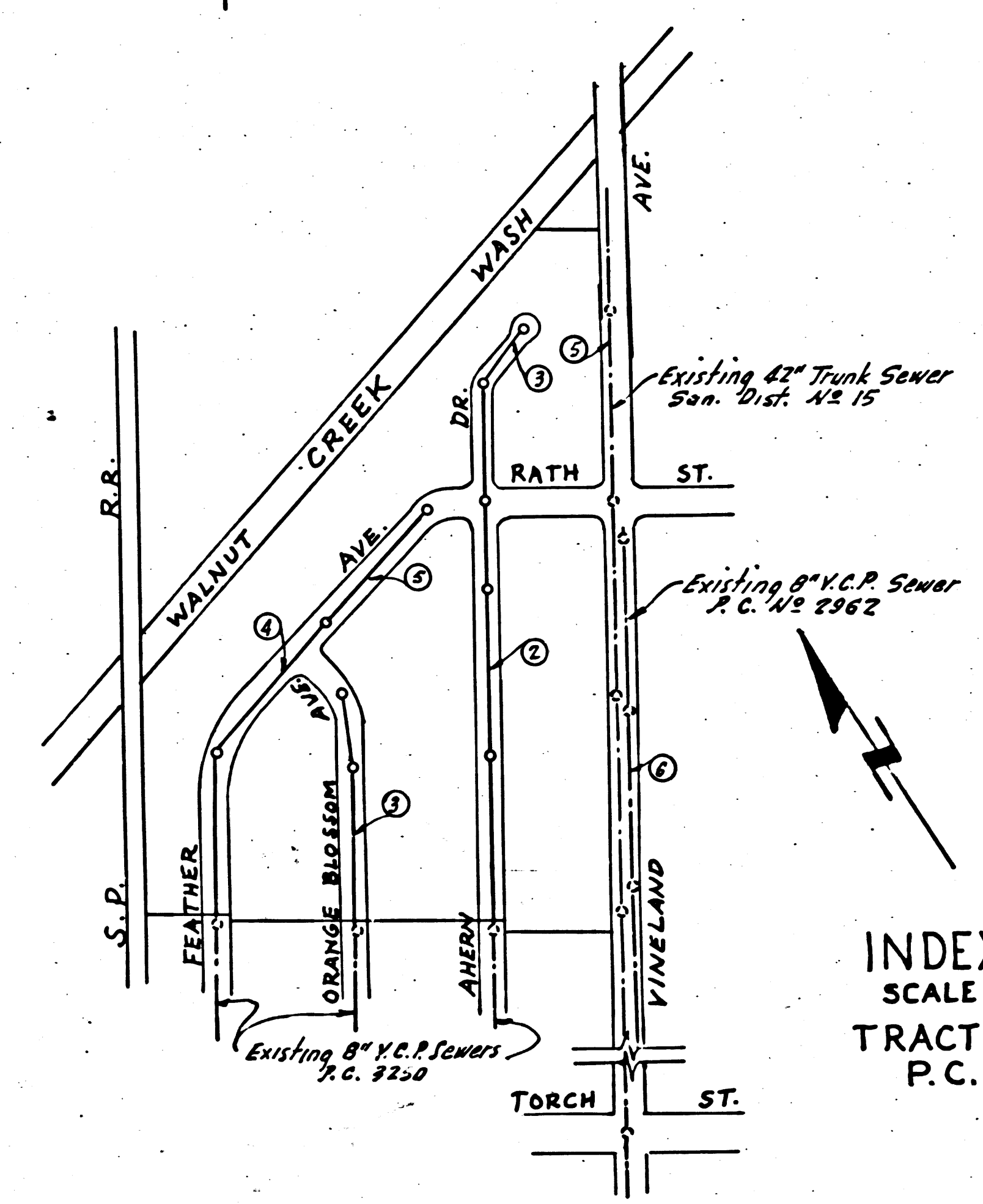
FOR LEGEND SEE PLAN NO. S-a-64

P.C. 3449
 PAGE 1

22,247

TRACT 15555

B.M. N^o 56-1085 ELEV. 314.130
 Lead & Brass Nail in S.E. cor. of Conc. Base
 of Pump Motor 45' S. of E. of Torch St. &
 85' W. of E. of Puente Ave.



SHEET	PAGE
1	1-4
2	5-6

**NO CHARGE
 FOR
 CONNECTIONS**
 2/24/55 5-10-55

NOTE:

Grades to which this improvement is to be constructed are shown on plans and profiles. Grade points for top of curbs, center line of streets, or center line of alleys are shown by circles on profiles. At all points between designated points the grade shall be established so as to conform to a straight line drawn between said designated points.

Elevations are in feet above U.S.G.S. datum or mean sea level.

This drawing and the data hereon are hereby made a part of the specifications.

Work shall be constructed according to specifications on file in the office of the County Engineer and shall be prosecuted only in the presence of the County Engineer.

Before work can be started, the contractor must obtain a permit to excavate in County streets from the L.A. County Road Dept., 108 W. 2nd St. and make a deposit with the County Engineer, \$100.00, sufficient to cover the cost of construction inspection and record plans.

Approval of this plan by the County of Los Angeles does not constitute a representation as to the accuracy of the location of or the existence or non-existence of any underground utility, pipe, or structure within the limits of this project. This note applies to all sheets.

If work is to be done in a State Highway, a permit must be obtained from the State of California, Division of Highways, 120 South Spring Street.

COUNTY OF LOS ANGELES, CALIFORNIA

Approved, William J. Fox, County Engineer
 Approved, A. M. Rawm
 CHIEF ENGR. CO. SAN DIST. NO. 15

By: *A.P. Collins* Sanitation Engineer
 By: *E.H. Bennett* Office Engineer

Checked by: *R.P. Kulis* 5-25-55
 Office of County Engineer, Reg. C. E. No. 7860

P.C. 3449
 PAGE 2

Trim Line

P.C. 3449
PAGE 3

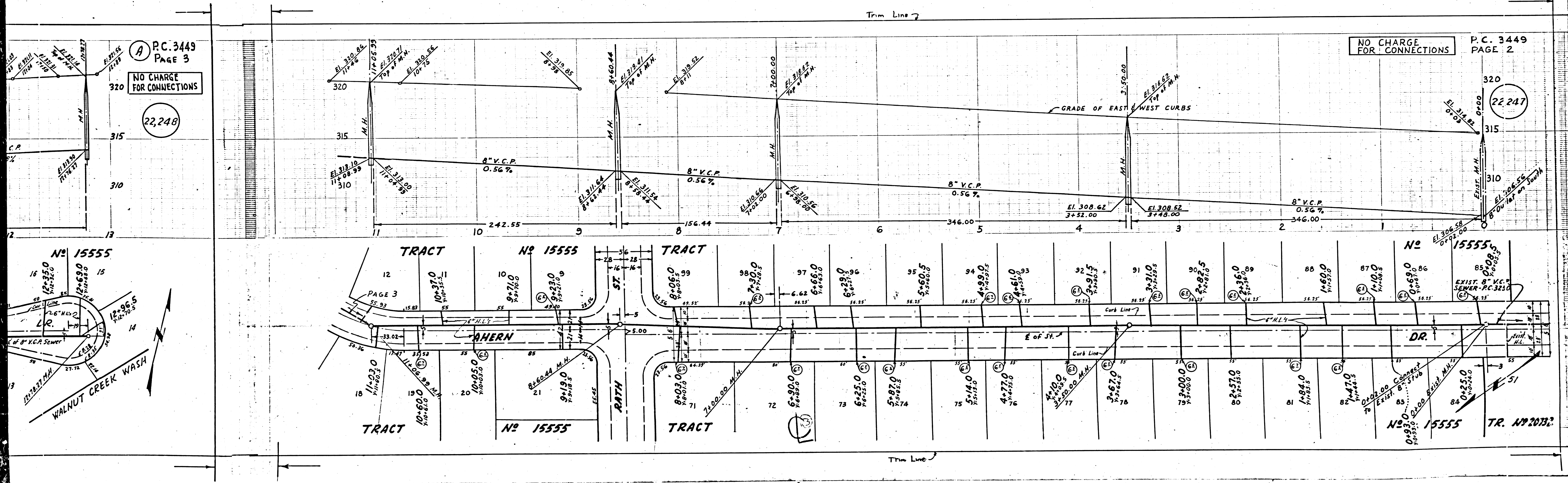
NO CHARGE
FOR CONNECTIONS

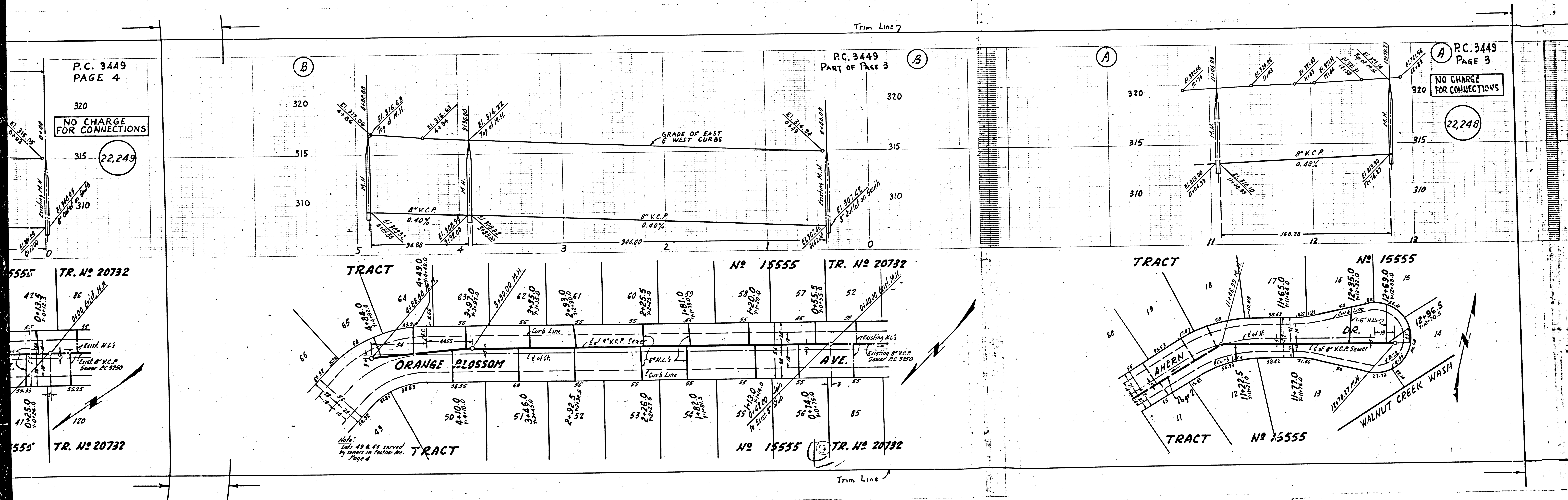
22,248

NO CHARGE
FOR CONNECTIONS

P.C. 3449
PAGE 2

22,247





P.C. 3449
PAGE 4

320
NO CHARGE
FOR CONNECTIONS

315 (22,249)
310

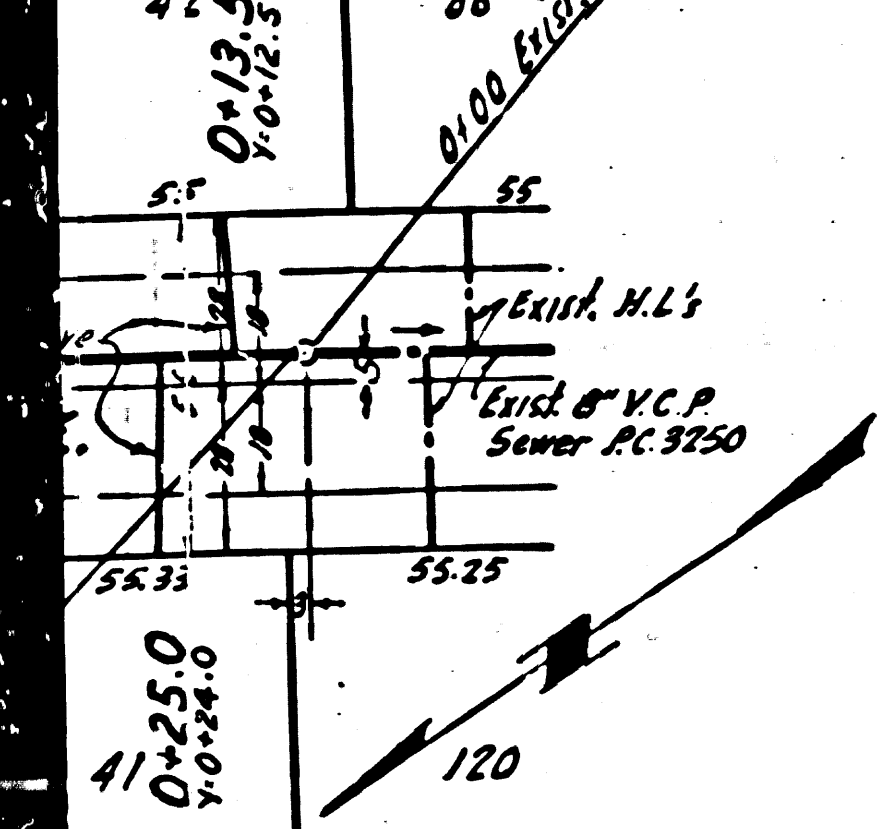
P.C. 3449
PART OF PAGE 3

P.C. 3449
PAGE 3

NO CHARGE
FOR CONNECTIONS

(22,248)

5555 TR. NO 20732

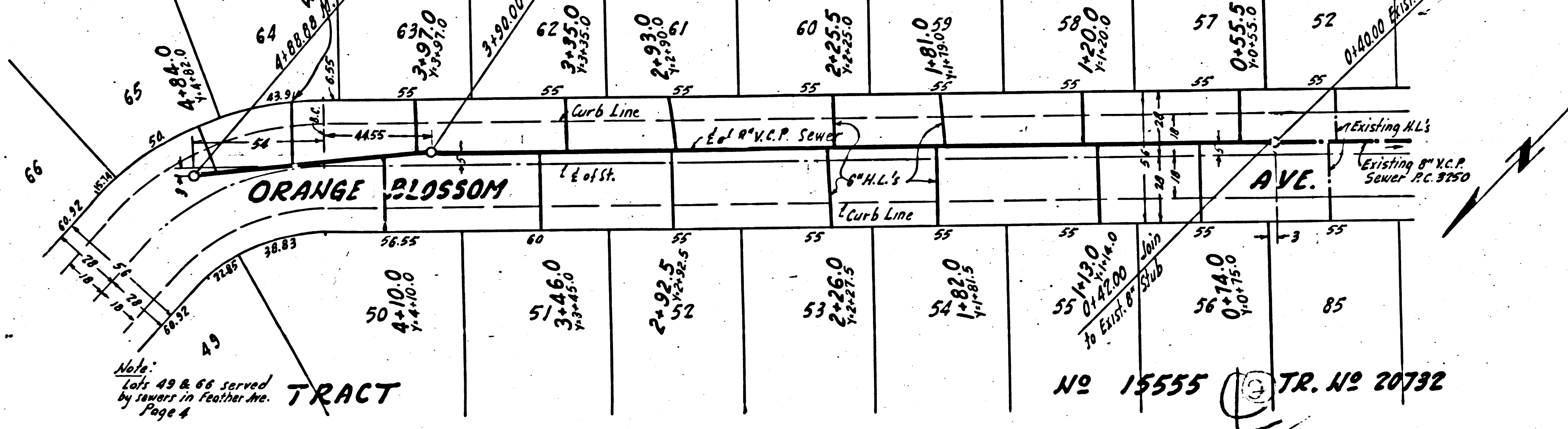


555 TR. NO 20732

TRACT

NO 15555

TR. NO 20732



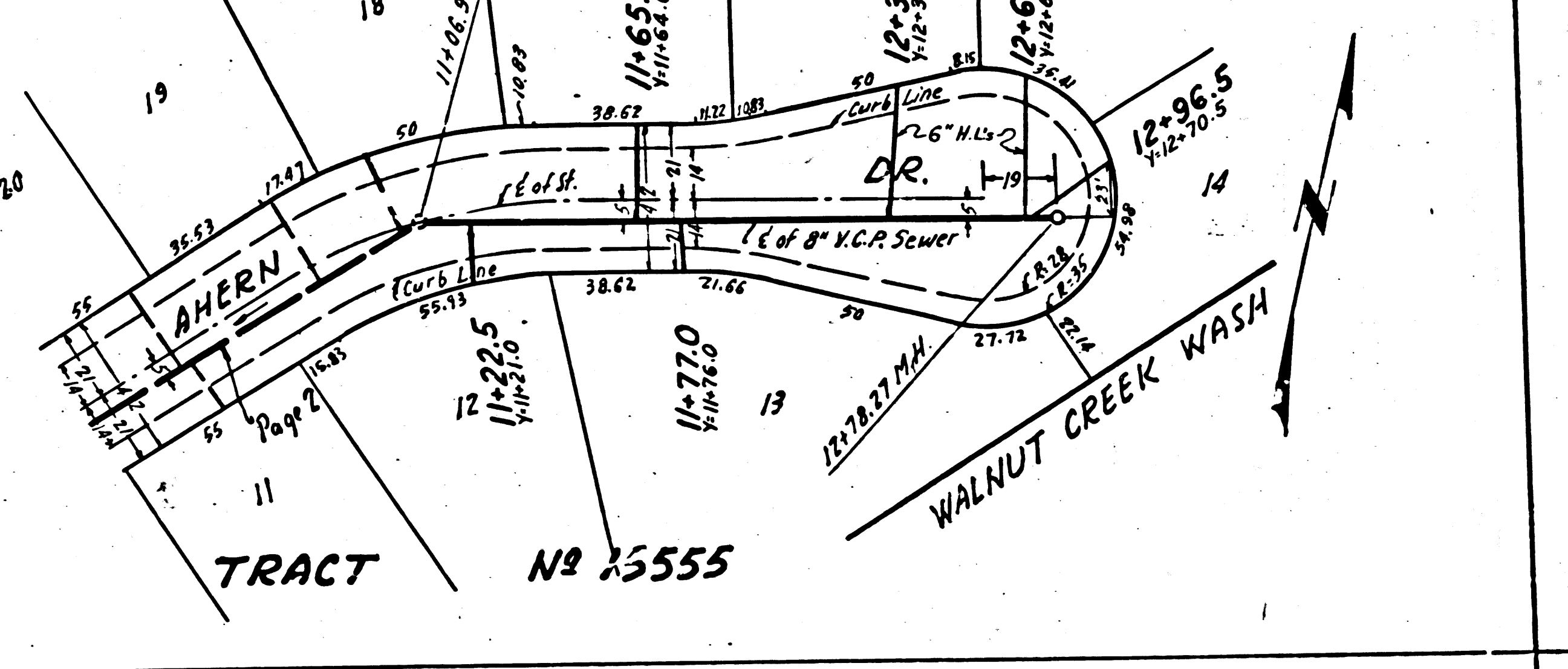
TRACT

NO 15555

TR. NO 20732

TRACT

NO 15555

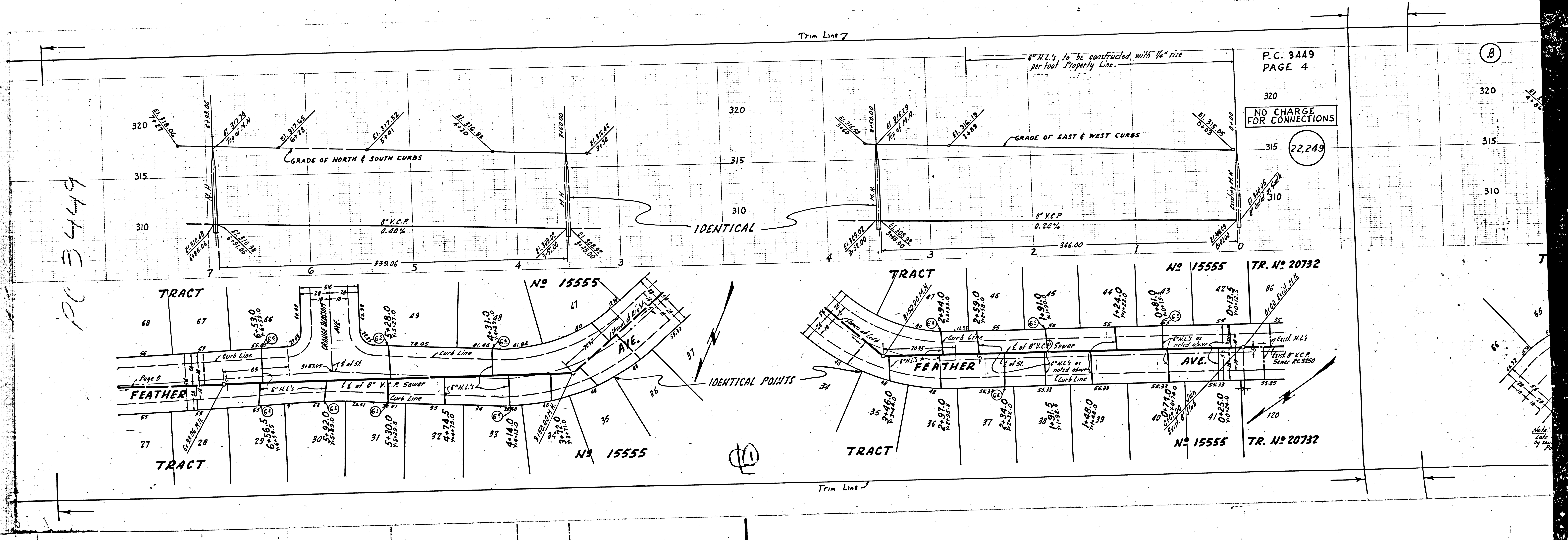


TRACT

NO 15555

Trim Line

PC 3449



P.C. 3449
PAGE 4

320
NO CHARGE
FOR CONNECTIONS

315
22,249

310

NO 15555 TR. NO 20732

NO 15555 TR. NO 20732

IDENTICAL POINTS

Trim Line 7

Trim Line 8

6\"/>

GRADE OF EAST & WEST CURBS

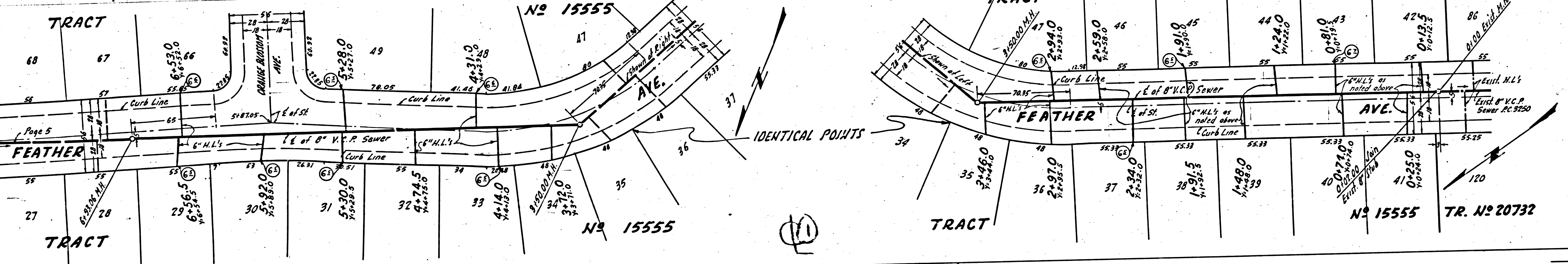
8\"/>

TRACT

TRACT

TRACT

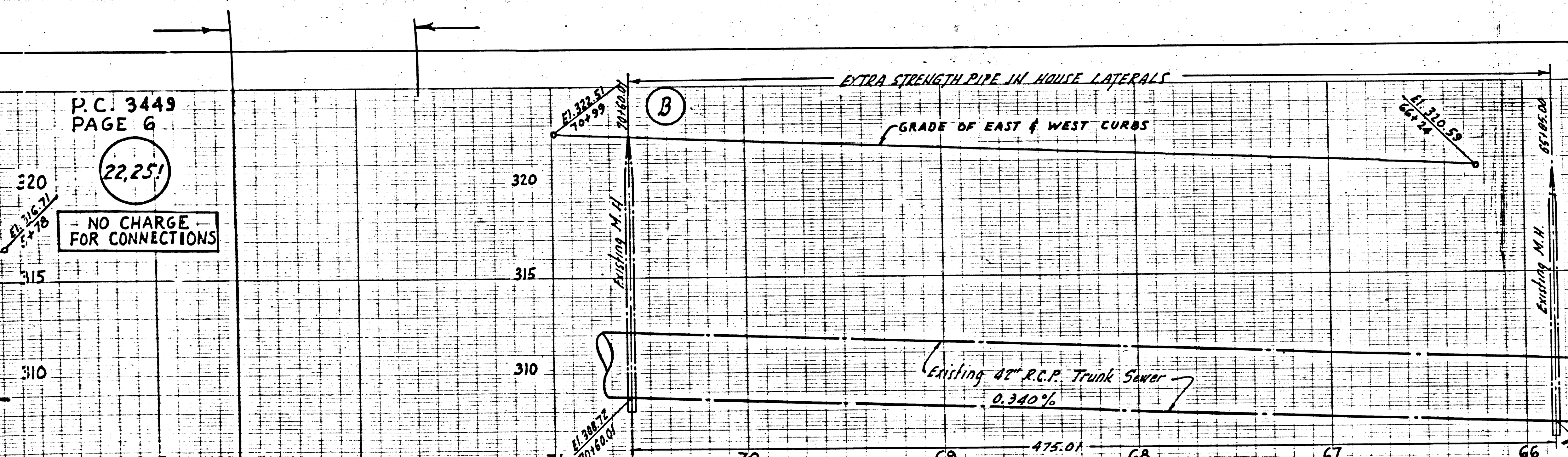
TRACT



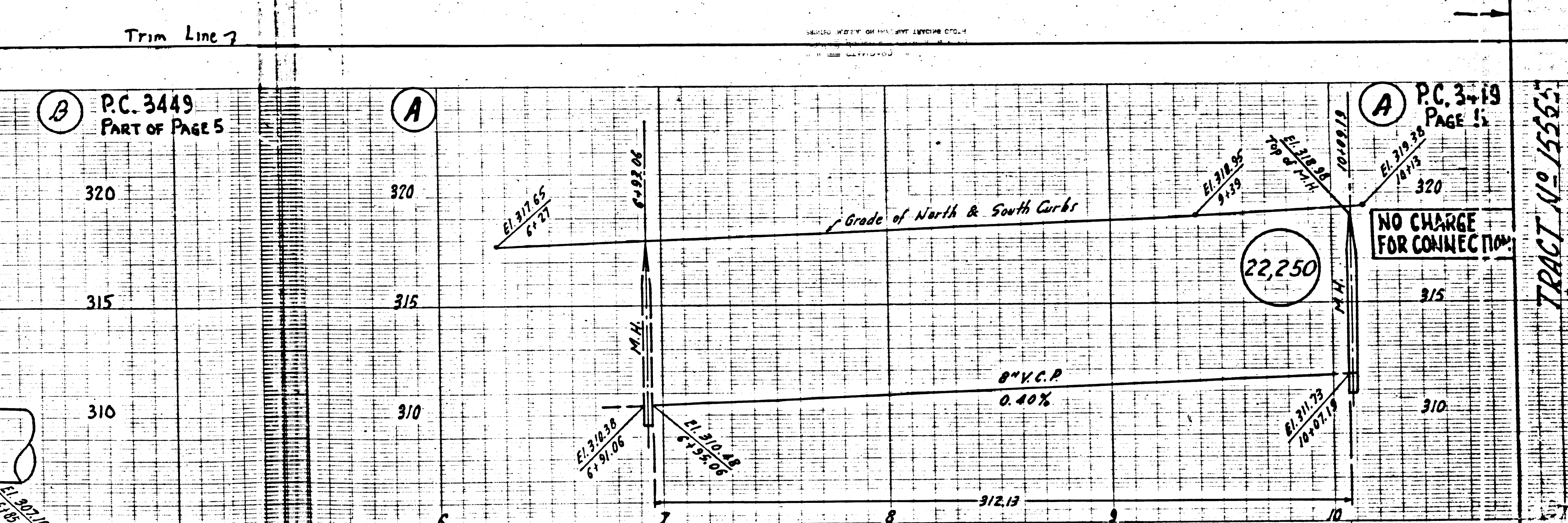
P.C. 3449
PAGE 6

22,251

NO CHARGE
FOR CONNECTIONS



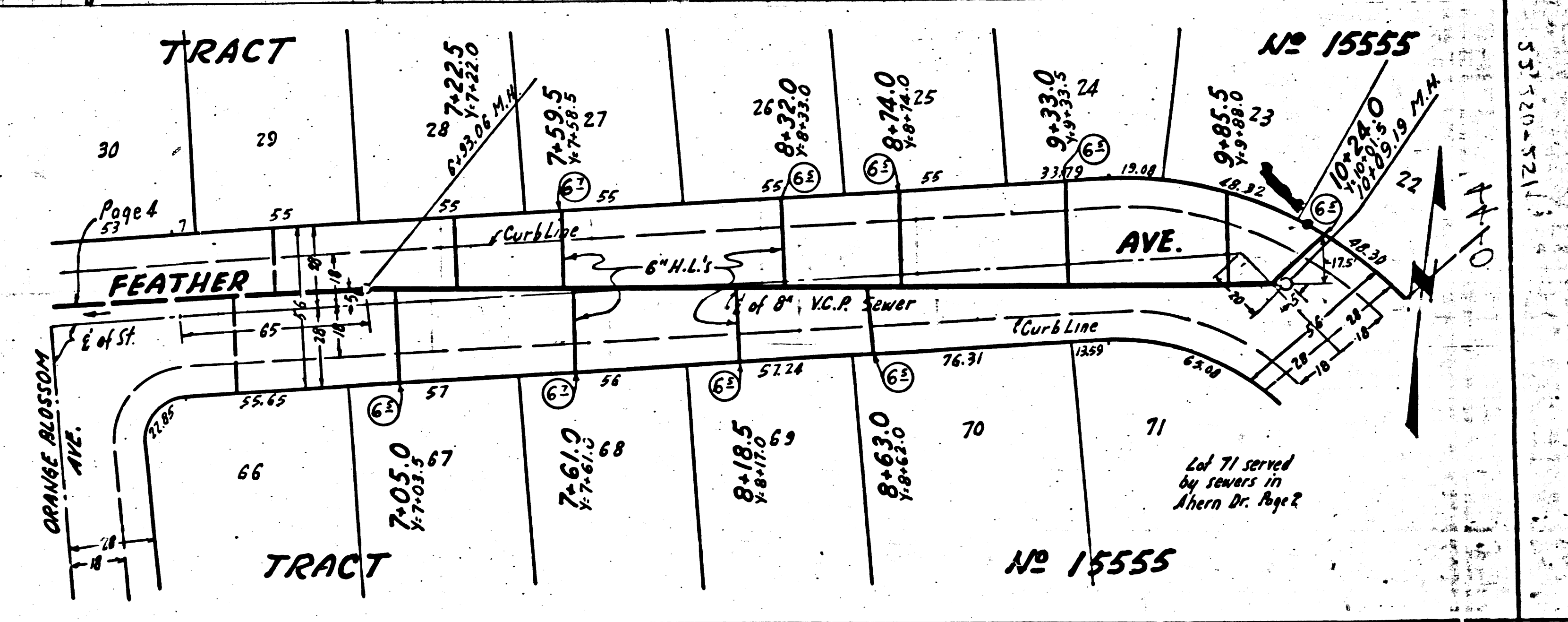
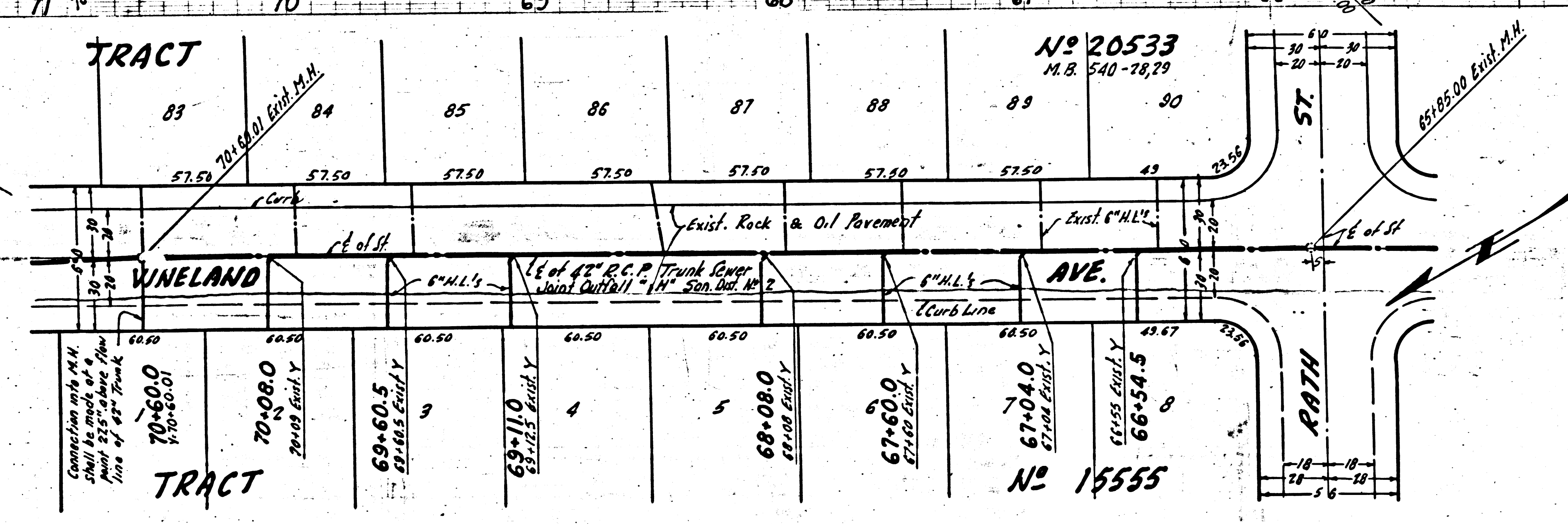
P.C. 3449
PART OF PAGE 5



P.C. 3449
PAGE 11

22,250

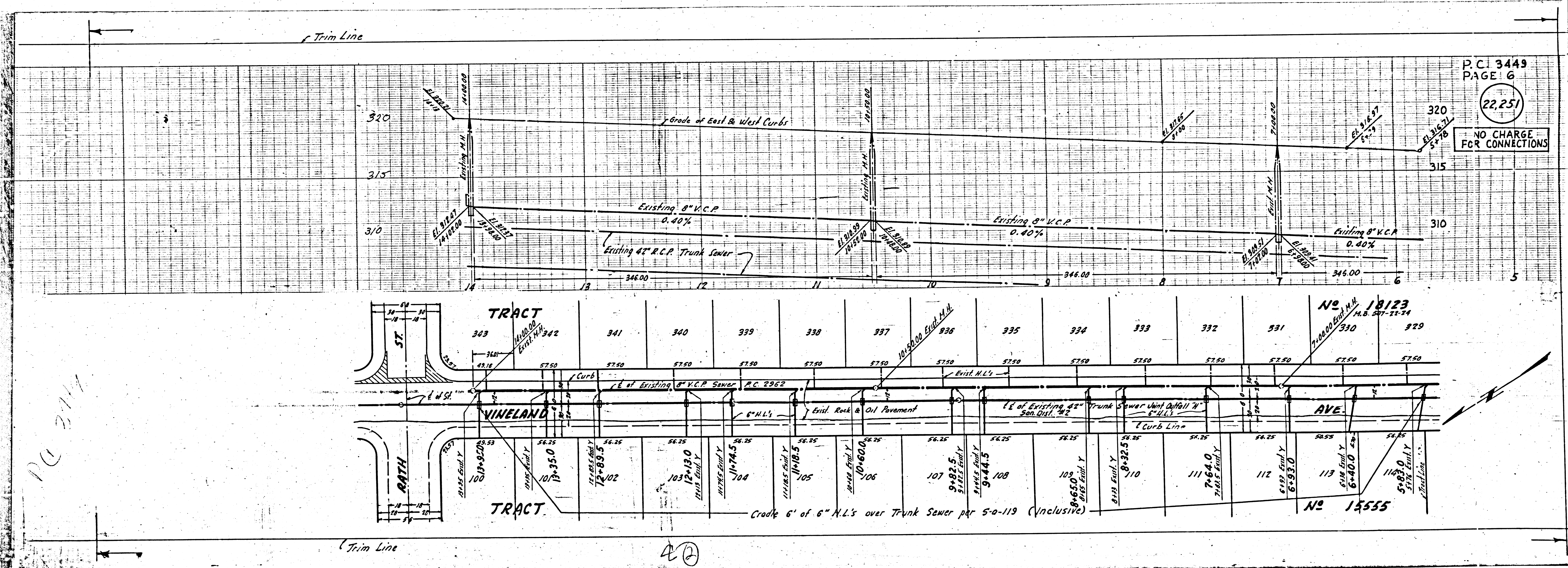
NO CHARGE
FOR CONNECTIONS



P.C. 3449
PAGE 11

22,251

NO CHARGE
FOR CONNECTIONS



NO 2114

40

No 18123
M.D. 2011-11-24

No 15555