

B.M. Rd. Dept. S.G. 395 El. 343.971
Francisquito Ave. & California Ave. S.W. Cor.
L & T in conc. culvert headwall

PUEENTE BLDG. DIST. N^o 2

NOTE:

Provide stakes on the property lines or property lines produced at right angles to the sewer line at the center line of each manhole.

No representative of the County Engineer will survey or layout any portion of the work.

The owner or his authorized representative shall furnish the County Engineer with grade sheets and stations for all house laterals and Y branches and shall provide stakes for them at their proper locations with stationing plainly marked. Any change in location shall be requested in writing by the owner or his representative.

No revisions shall be made in these plans without the approval of the County Engineer.

1. Use standard manhole frames and covers, S-a-117.
 2. Use standard strength pipe except as noted.
 3. Use cement mortar for all vitrified clay pipe joints.
 4. Resurface all trench within paved area to meet L.A. County Road Dept. or California State Highway Dept. requirements in accordance with permit.
 5. Encase four feet of sewer at points of interference with poles, S-a-119.
 6. House laterals to be constructed with inverts at property line G feet below curb grade except as noted.
 7. All structures shall be brick sewer structures, S-a-104.
 8. For allowable leakage test, use Formula No. 1, Spec's., Sec. 51.
- * Manhole tops in unimproved Rights-Of-Way to be 4" above finish grade.

PROFILE, ALIGNMENT AND GRADE OF
SANITARY SEWERS
TO BE CONSTRUCTED IN

P.C. 3454
PAGE 1

TRACT N^o 21359

21,527

PRIVATE CONTRACT NO. 3454
W. S. 38
3 SHEETS

Scale: VERT. 1"=4'
HORIZ. 1"=40'
APRIL, 1955
PREPARED IN THE OFFICES OF

MANNING & DETILLA

By *James L. Manning*, C.E. No. 7676

FOR LEGEND SEE PLAN NO. S-a-64

NOTE:

Grades to which this improvement is to be constructed are shown on plans and profiles. Grade points for top of curbs, center line of streets, or center line of alleys are shown by circles on profiles. At all points between designated points the grade shall be established so as to conform to a straight line drawn between said designated points.

Elevations are in feet above U.S.G.S. datum or mean sea level.

This drawing and the data hereon are hereby made a part of the specifications.

Work shall be constructed according to specifications on file in the office of the County Engineer and shall be prosecuted only in the presence of the County Engineer.

Before work can be started, the contractor must obtain a permit to excavate in County streets from the L.A. County Road Dept., 108 W. 2nd St. and make a deposit with the County Engineer.

Approval of this plan by the County of Los Angeles does not constitute a representation as to the accuracy of the location of or the existence or non-existence of any underground utility, pipe, or structure within the limits of this project. This note applies to all sheets.

If work is to be done in a State Highway, a permit must be obtained from the State of California, Division of Highways, 120 South Spring Street.

COUNTY OF LOS ANGELES, CALIFORNIA

Approved, William J. Fox, County Engineer

Approved, A. M. Rawns

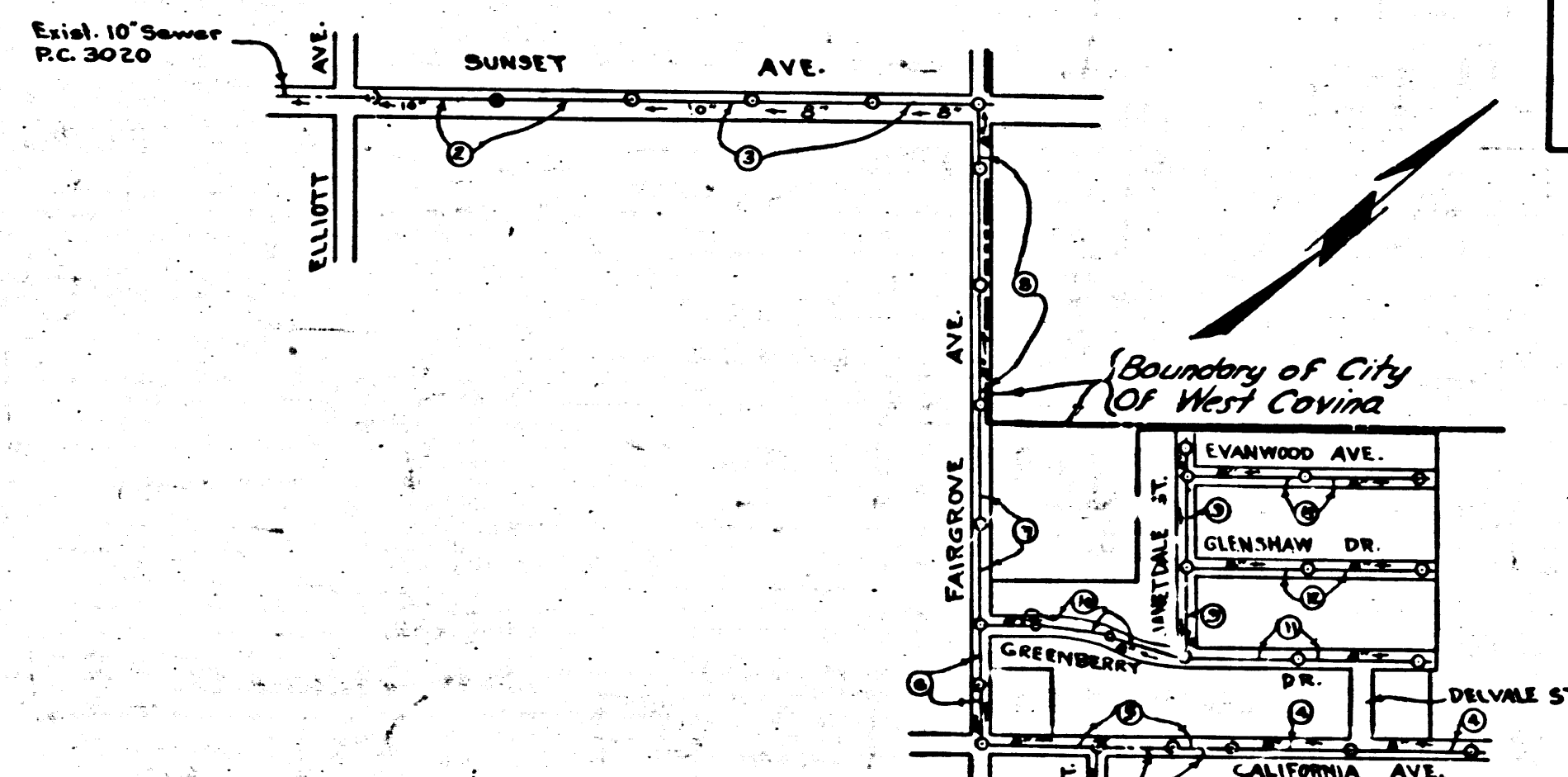
By *W. H. Hughes*,
Asst. County Engineer

CHIEF ENGR. CO. SAN. DIST. NO. 15

By *A. M. Rawns*,
Office Engineer

Checked by *R. E. Kuhn*, S-a-15
Office of County Engineer, Rep. C. E. No. 2840

SHEET	PAGES
1	1-3
2	4-8
3	9-13



COLLECT CHANGES AS INDICATED
Revisions 5-4-55

Revised 10-13-55 WJF

(13) Trim Line

TRACT N^o 21359

PC 3454
PAGE 3

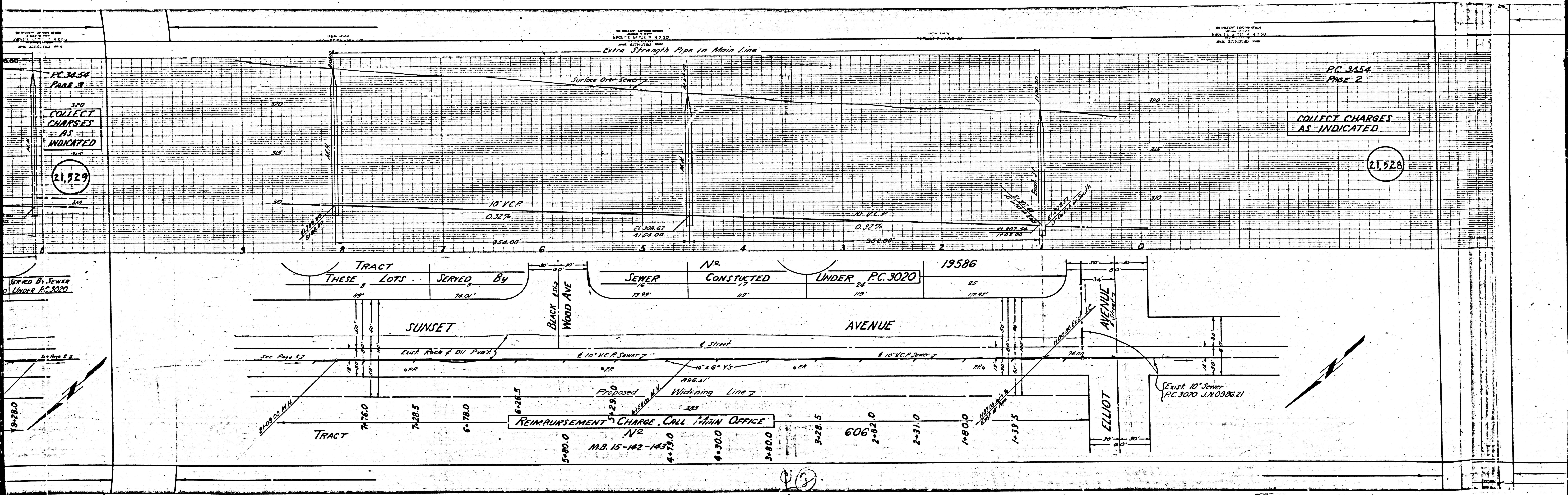
COLLECT CHARGES AS INDICATED

21,929

PC 3454
PAGE 2

COLLECT CHARGES AS INDICATED

21,528



SERVED BY SEWER UNDER P.C. 3020

TRACT THESE LOTS SERVED BY SEWER CONSTRUCTED UNDER P.C. 3020 19586

SUNSET

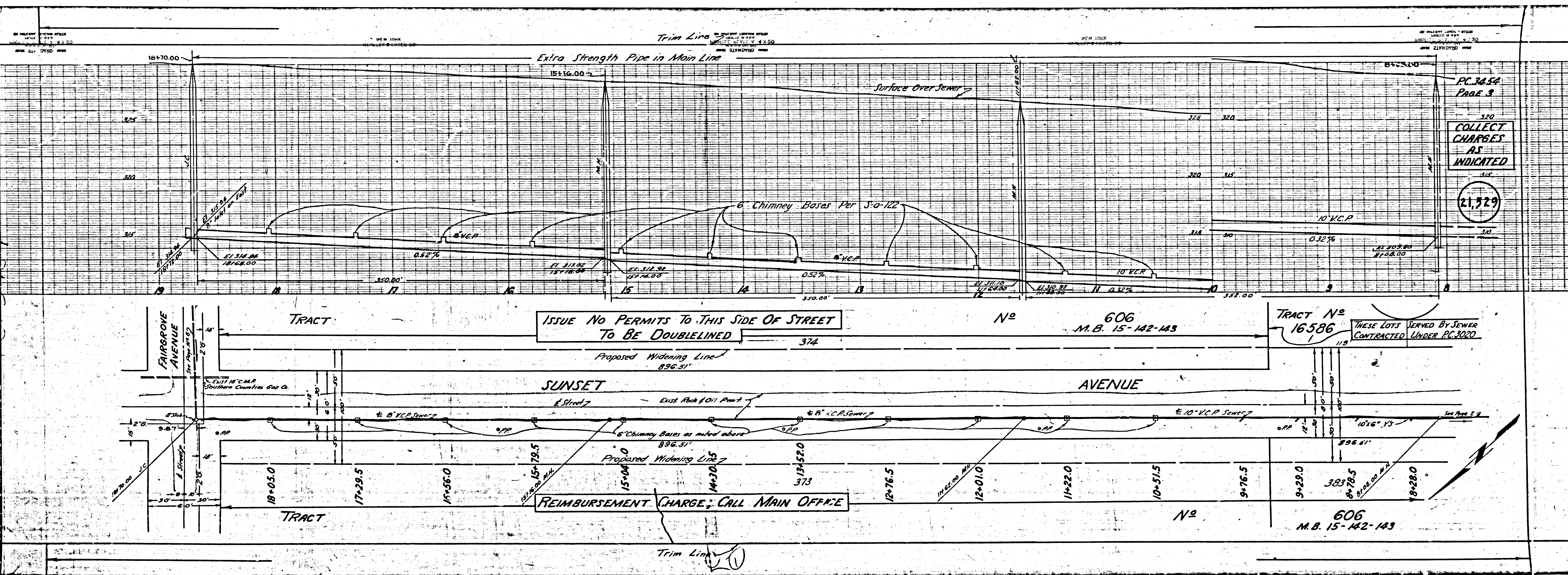
AVENUE

ELLIOT

REIMBURSEMENT CHARGE, CALL MAIN OFFICE

EXIST 10" SEWER P.C. 3020 J.N. 0986.21

21



PC 3634
 Page 3
 COLLECT CHARGES AS INDICATED
 21,929

ISSUE NO PERMITS TO THIS SIDE OF STREET TO BE DOUBLELINED

REIMBURSEMENT CHARGE; CALL MAIN OFFICE

No 606
 M.B. 15-142-143

TRACT No 16586
 THESE LOTS SERVED BY SEWER CONTRACTED UNDER PC 3020

No 606
 M.B. 15-142-143

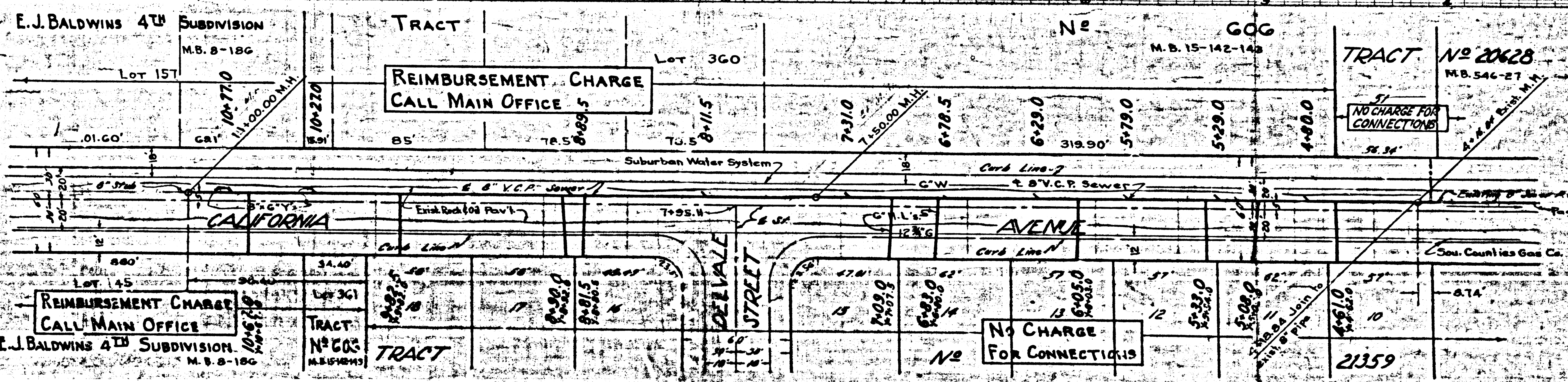
PC 3454
PAGE 5

CHARGES
ATELL

21531

PC 3454
PAGE 6

COLLECT CHARGES
AS INDICATED



PC. 3454
PAGE 6

21,532

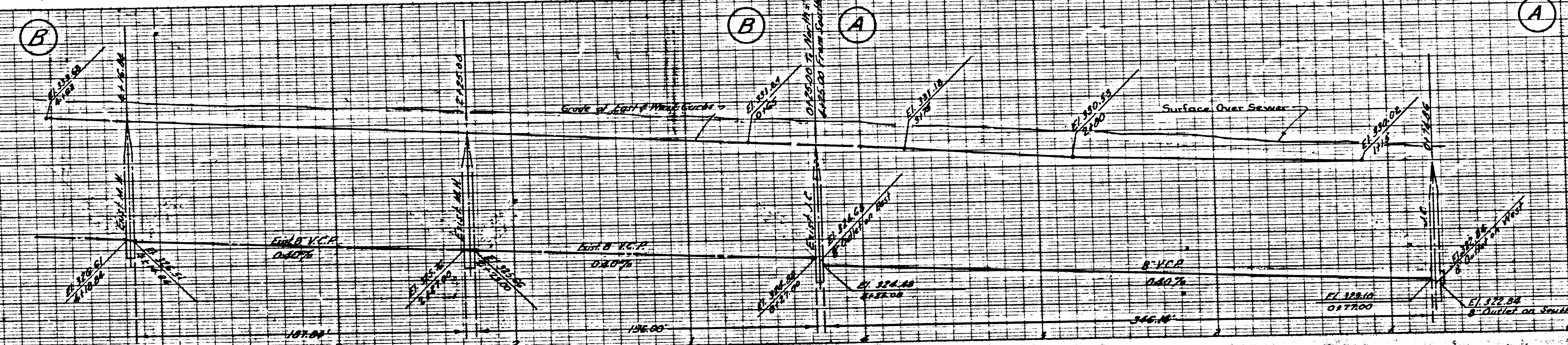
COLLECT CHARGES
AS INDICATED

PC. 3454
PAGE 5

COLLECT CHARGES
AS INDICATED

21,531

TRACT	ISSUE PERMITS FROM	NO	PC. 3290	TRACT	NO	MB. 15-142-143	TRACT	NO	MB. 15-142-143
58	58	49	46	47	46	45	606	360	606
34.34	34.34	40'	40'	40'	40'	45.50	3-500	360	3-500
NO CHARGE FOR CONNECTIONS		NO CHARGE FOR CONNECTIONS		NO CHARGE FOR CONNECTIONS		NO CHARGE FOR CONNECTIONS		NO CHARGE FOR CONNECTIONS	
TRACT	TRACT	TRACT	TRACT	TRACT	TRACT	TRACT	TRACT	TRACT	TRACT
21359	21359	21359	21359	21359	21359	21359	21359	21359	21359



San. Counties Gas Co.

PC 3454
PAGE 7

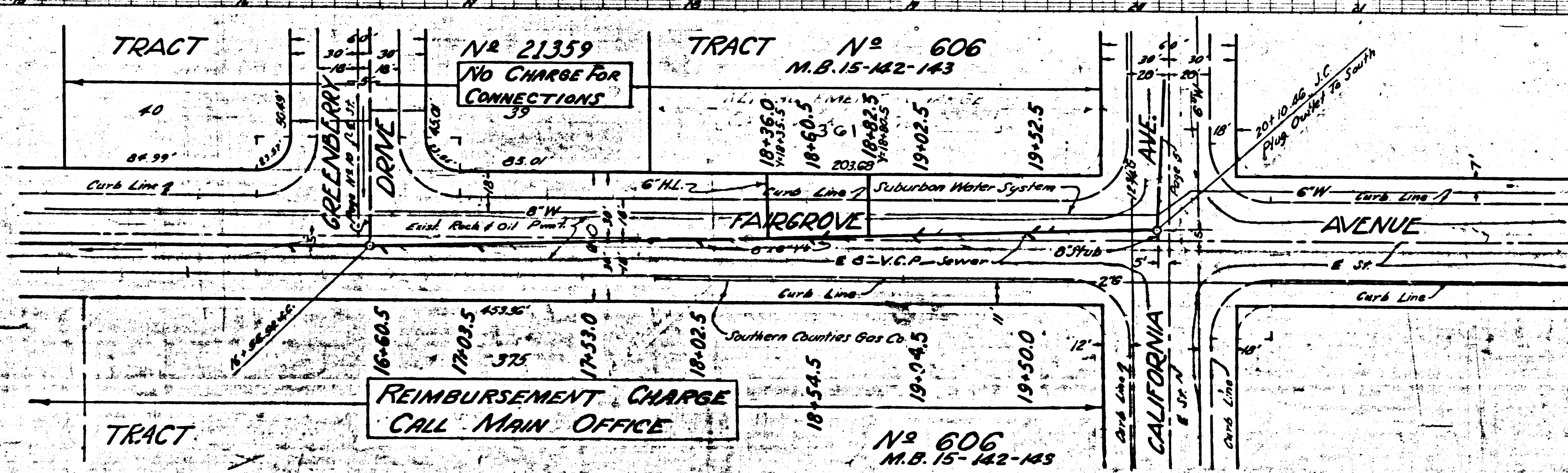
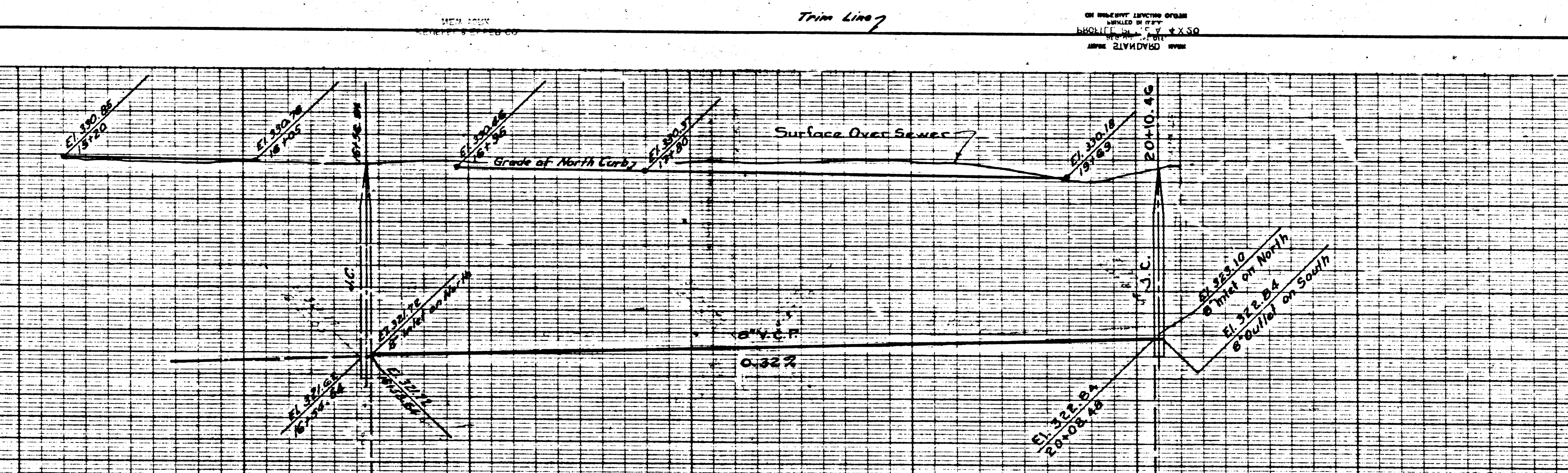
COLLECT CHARGES
AS INDICATED

21,533

PC 3454
PAGE 6

COLLECT CHARGES
AS INDICATED

21,532



PC. 3454
PAGE B

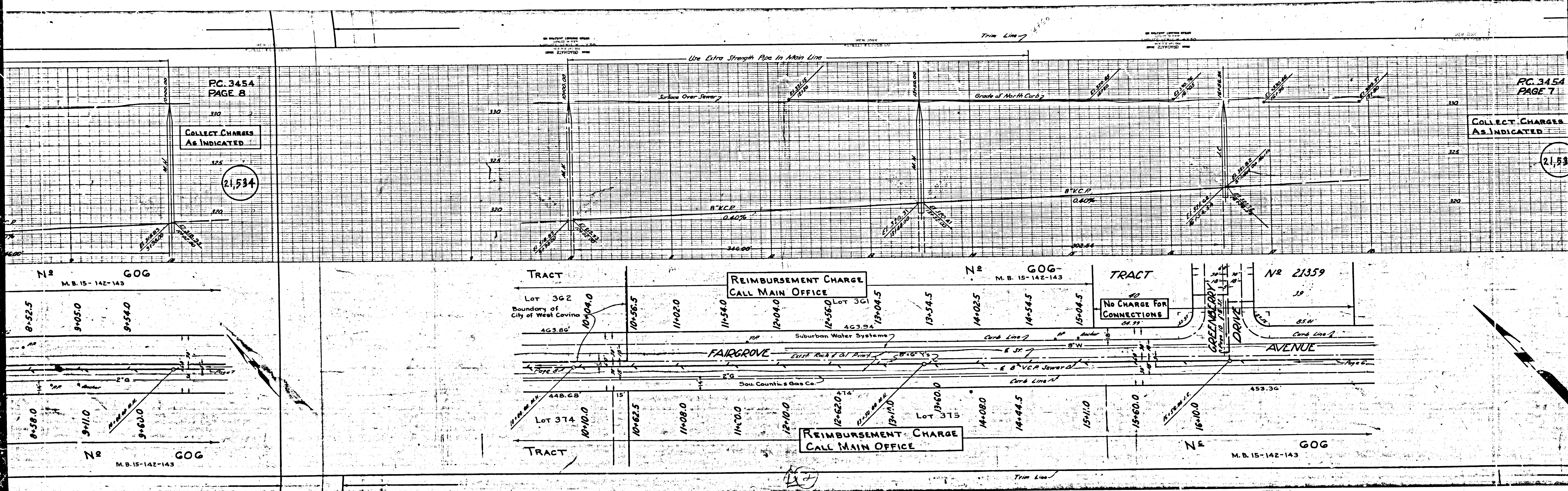
COLLECT CHARGES
AS INDICATED

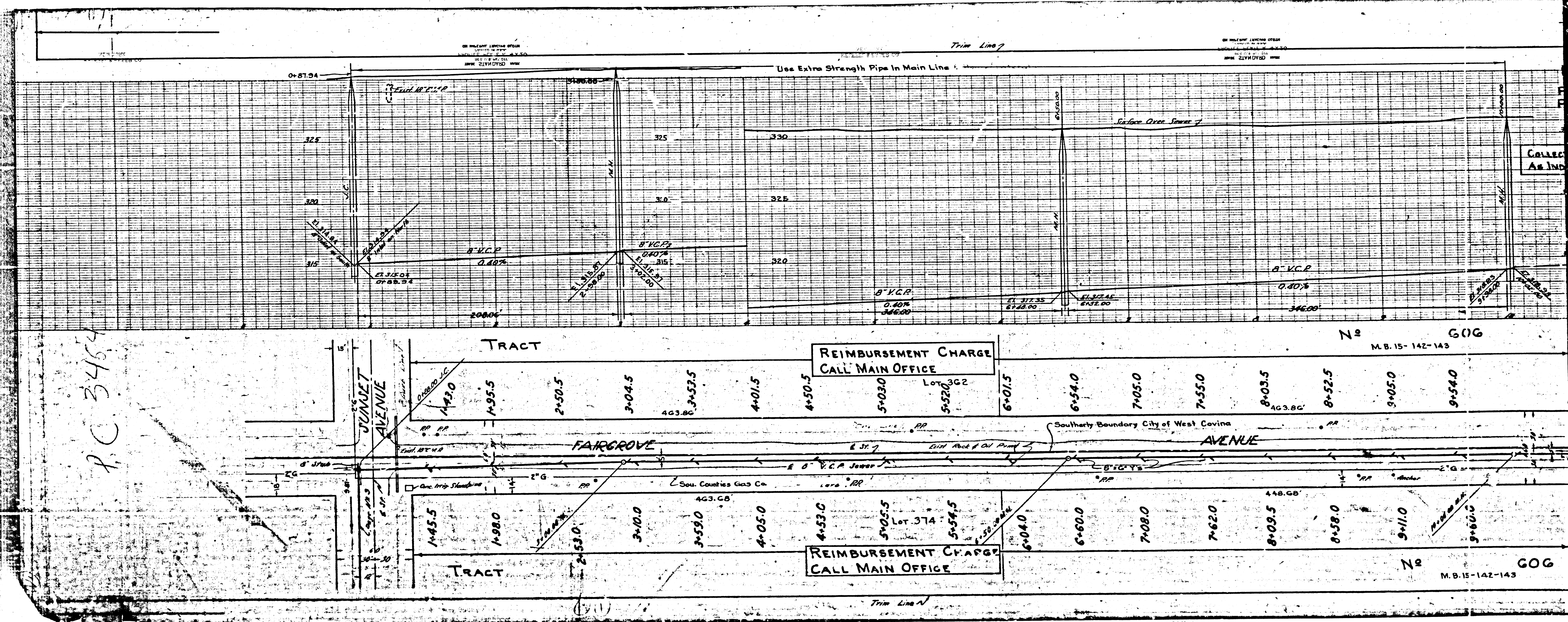
21,534

PC. 3454
PAGE T

COLLECT CHARGES
AS INDICATED

21,534





R.C. 3464

REIMBURSEMENT CHARGE
CALL MAIN OFFICE

REIMBURSEMENT CHARGE
CALL MAIN OFFICE

M.B. 15-142-143

M.B. 15-142-143

Trim Line 7

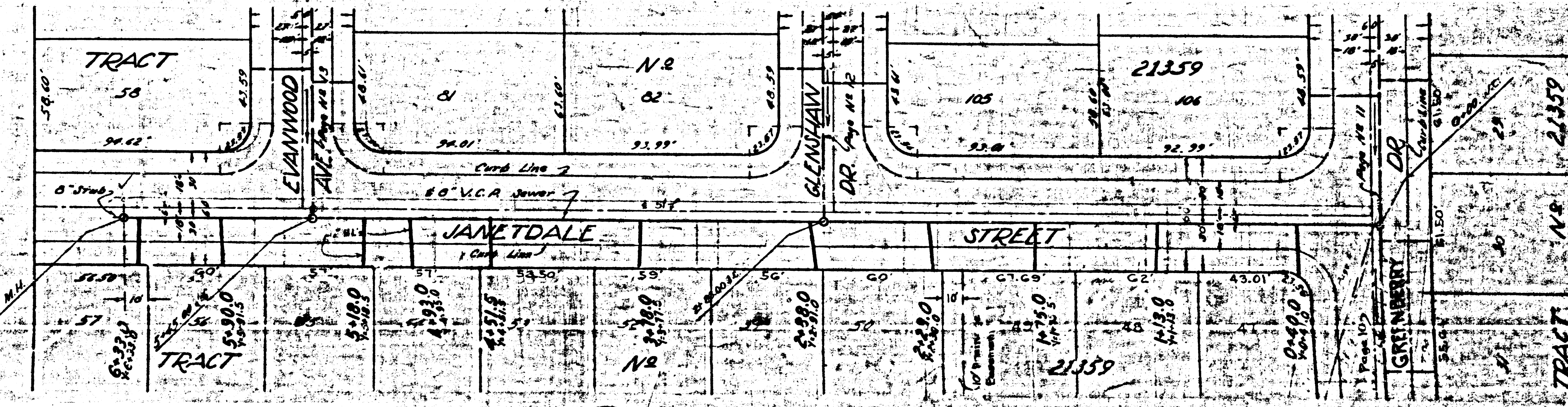
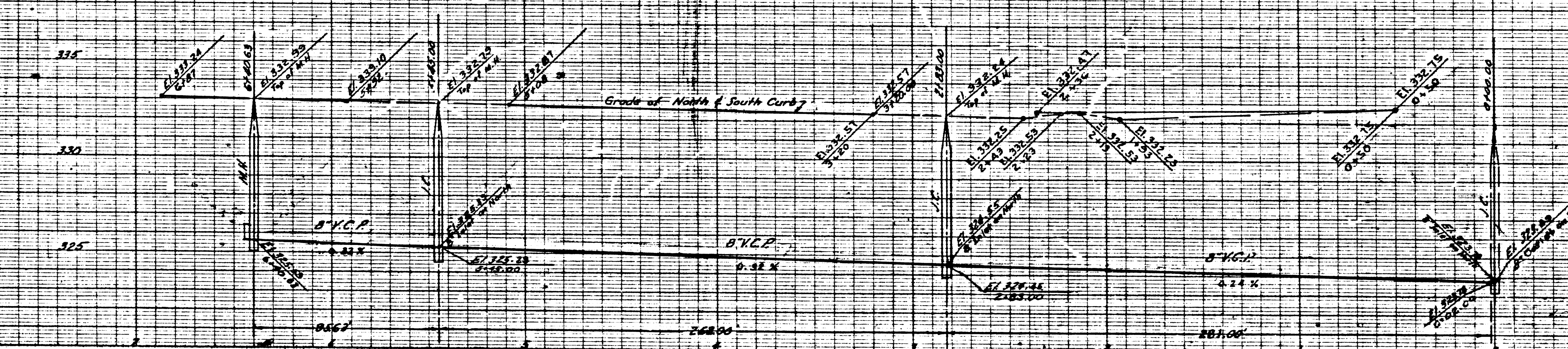
NO PROPERTY LINES SHOWN
UNLESS SPECIALLY NOTED
BY THIS OFFICE

NO PROPERTY LINES SHOWN
UNLESS SPECIALLY NOTED
BY THIS OFFICE

NO PROPERTY LINES SHOWN
UNLESS SPECIALLY NOTED
BY THIS OFFICE

PC. 3454
Page 9

NO CHARGE FOR
CONNECTING



Trim Line 5

NO PROPERTY LINES SHOWN
UNLESS SPECIALLY NOTED
BY THIS OFFICE

NO PROPERTY LINES SHOWN
UNLESS SPECIALLY NOTED
BY THIS OFFICE

NO CHARGE FOR CONNECTIONS

Trim Line 2

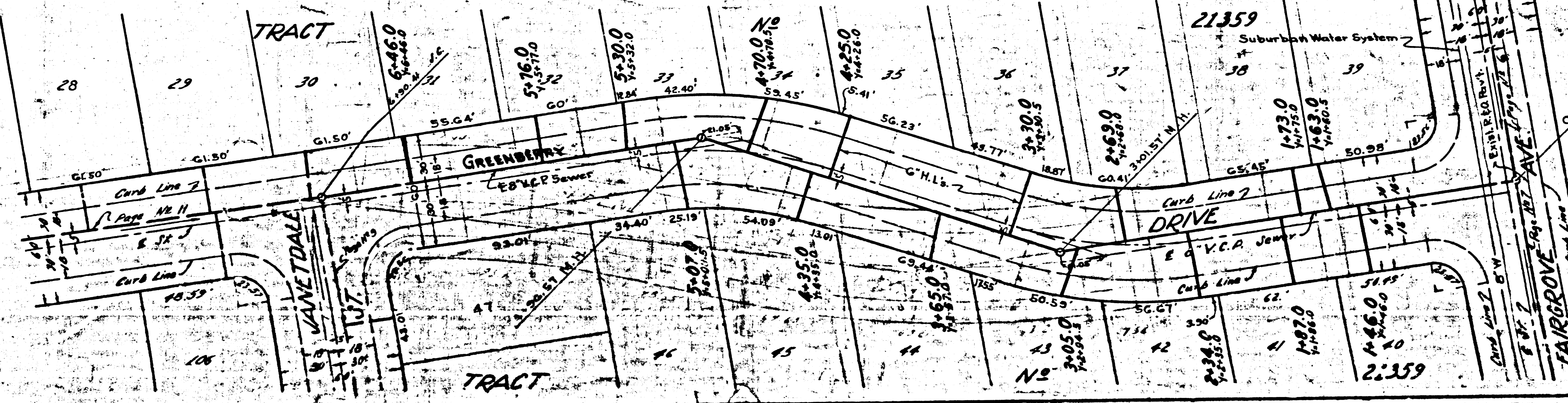
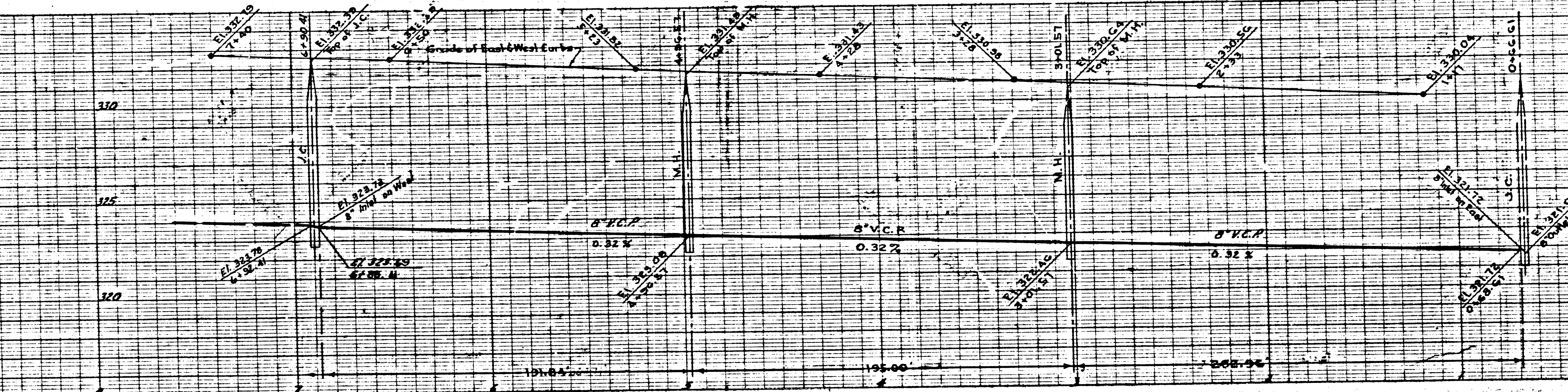
NO CHARGE FOR CONNECTIONS

NO CHARGE FOR CONNECTIONS

P.C. 3454
Page 10

NO CHARGE FOR CONNECTIONS

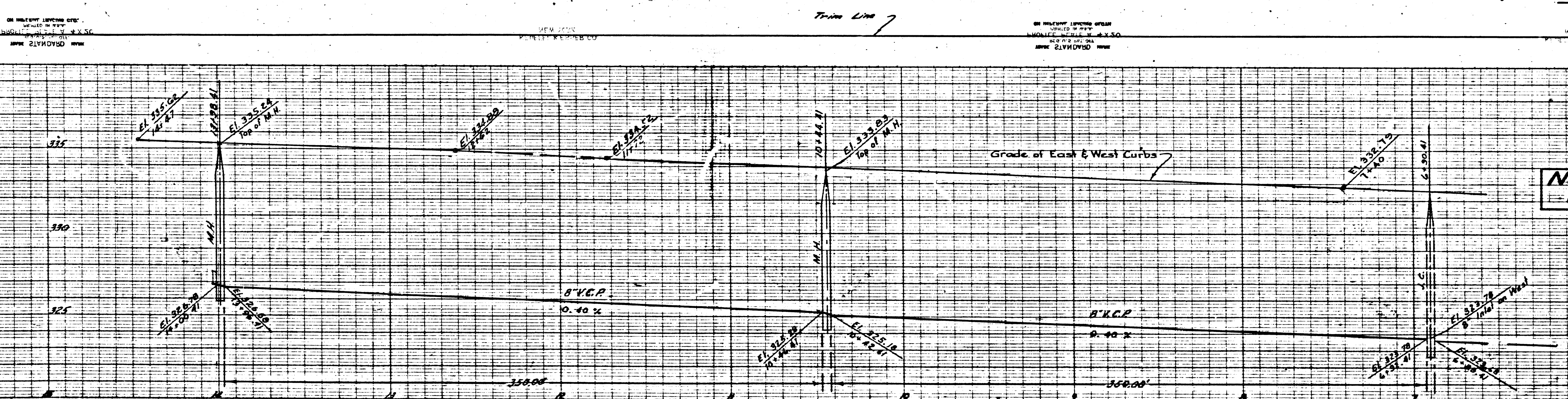
21,536



1454
12

SEE FOR
CONNECTIONS

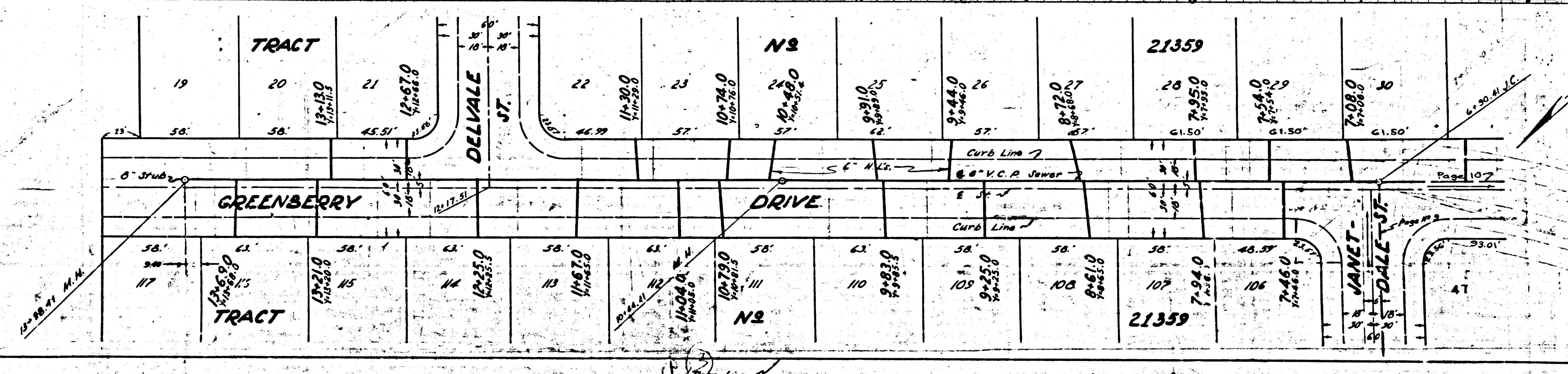
(538)



PC 3454
PAGE II

NO CHARGE FOR
CONNECTIONS

(21537)



Page 107

P.C. 3454
PAGE 13

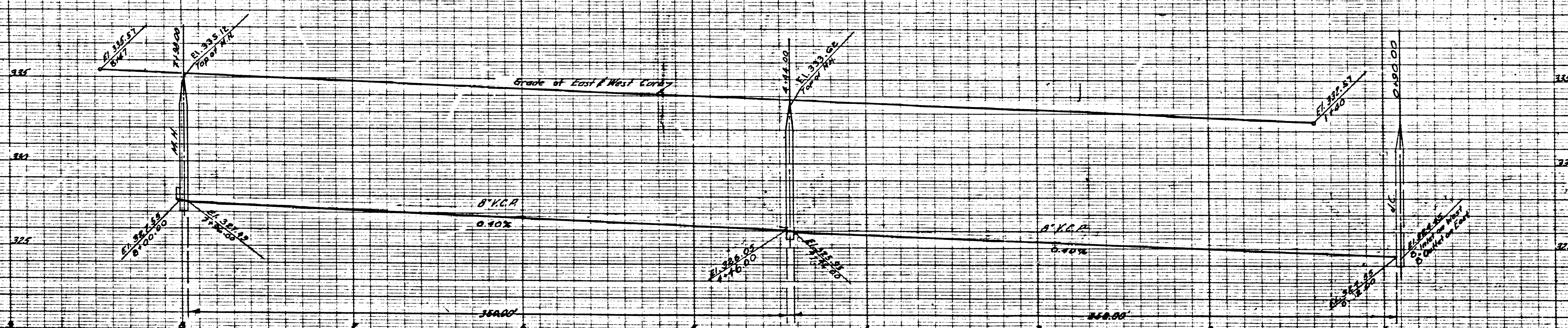
NO CHARGE
FOR CONNECTIONS

21,539

ON PLANNED LAYOUTS FROM
MAY 1950 TO 1954
ALL DISTANCES ARE
AS SHOWN UNLESS
OTHERWISE NOTED

Trim Line

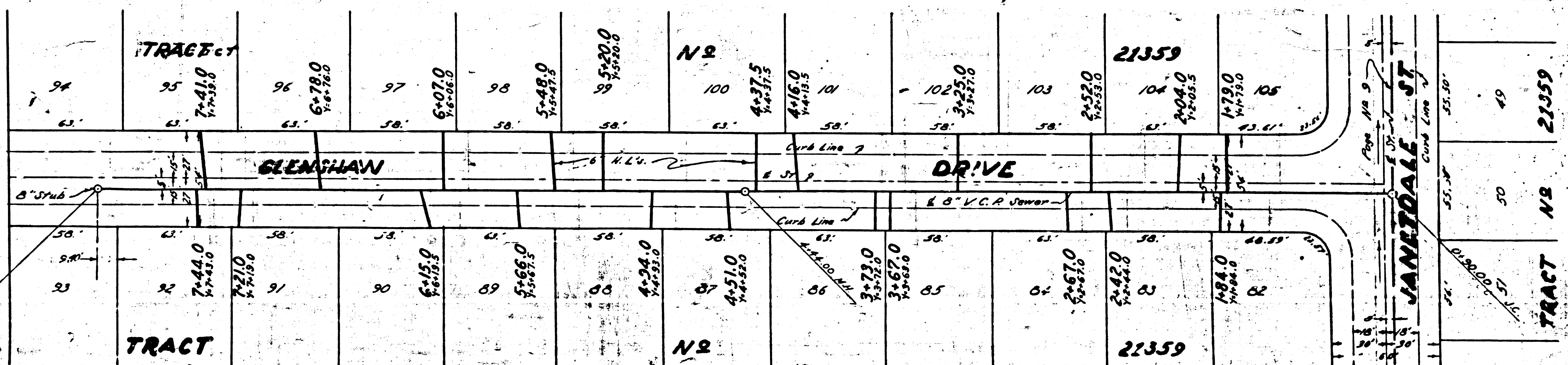
ON PLANNED LAYOUTS FROM
MAY 1950 TO 1954
ALL DISTANCES ARE
AS SHOWN UNLESS
OTHERWISE NOTED



P.C. 3454
PAGE 12

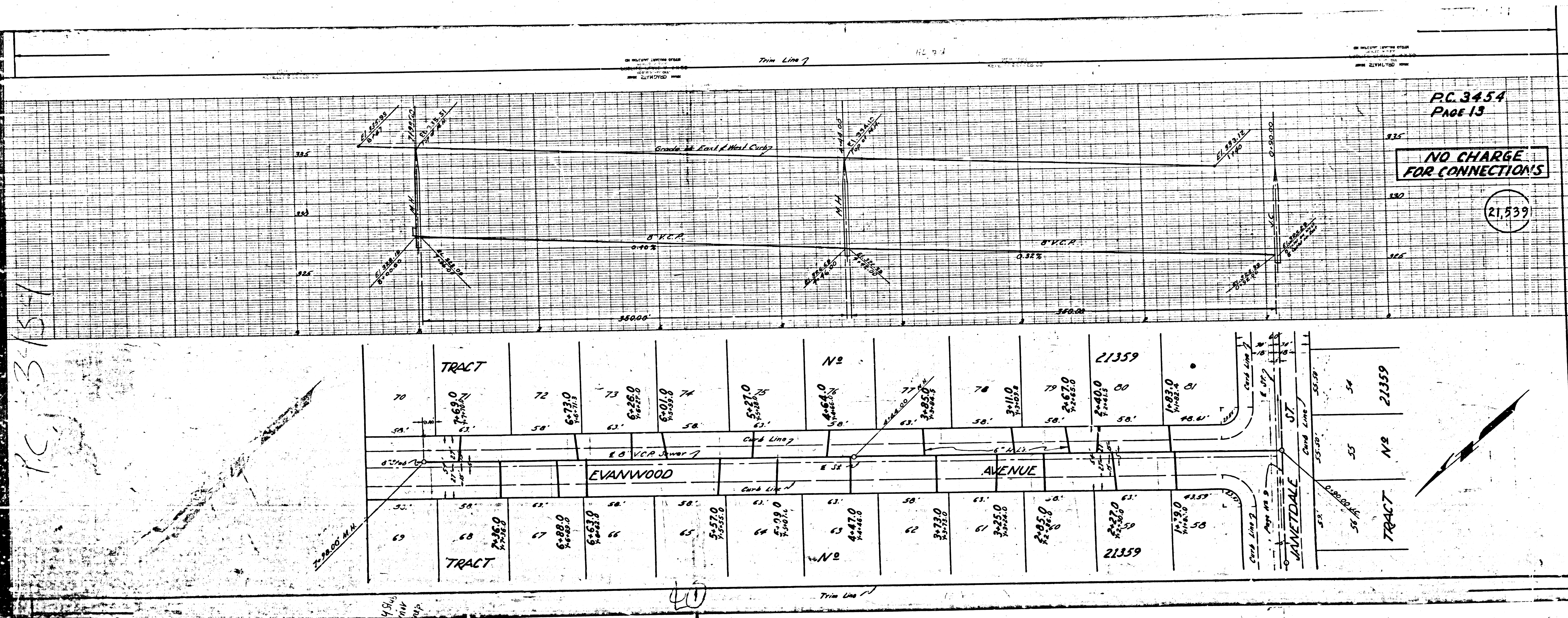
NO CHARGE
FOR CONNECTIONS

21,538



Trim Line

ON PLANNED LAYOUTS FROM
MAY 1950 TO 1954
ALL DISTANCES ARE
AS SHOWN UNLESS
OTHERWISE NOTED



PC 3454
PAGE 13

NO CHARGE
FOR CONNECTIONS

21,539

PC 3454

40

