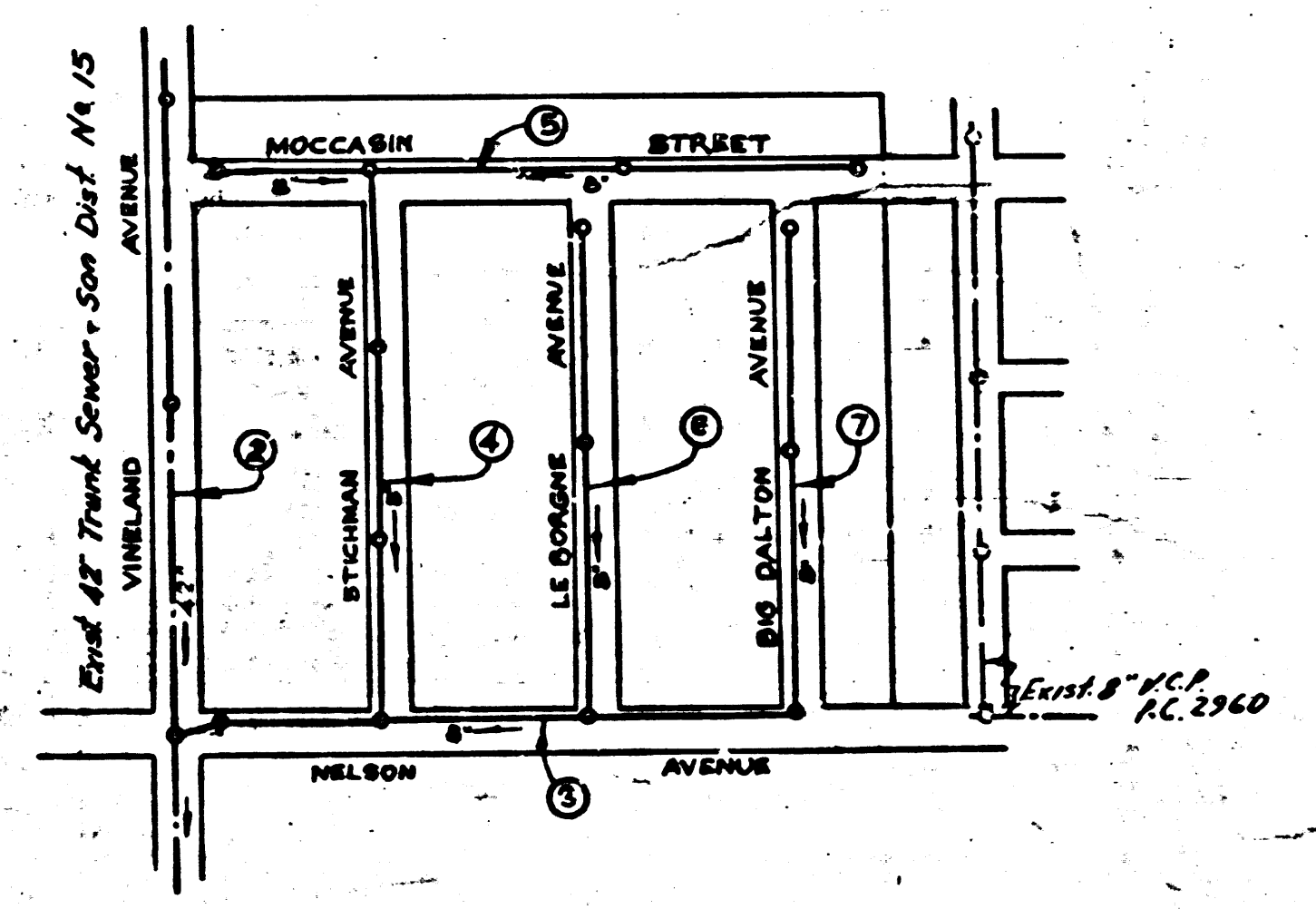


Trim Line

PUEENTE BLDG DIST. N^o 2

- NOTE:**
- Provide stakes on the property lines or property lines produced at right angles to the sewer line at the center line of each manhole.
- No representative of the County Engineer will survey or layout any portion of the work.
- The owner or his authorized representative shall furnish the County Engineer with grade sheets and stations for all house laterals and Y branches and shall provide stakes for them at their proper locations with stationing plainly marked. Any change in location shall be requested in writing by the owner or his representative.
- No revisions shall be made in these plans without the approval of the County Engineer.
1. Use standard manhole frames and covers, S-a-117.
 2. Use standard strength pipe except as noted.
 3. Use cement mortar for all vitrified clay pipe joints.
 4. Resurface all trench within paved areas to meet L.A. County Road Dept. or California State Highway Dept. requirements in accordance with permit.
 5. Encase four feet of sewer at points of interference with poles, S-a-119.
 6. House laterals to be constructed with inverts at property line $\frac{1}{2}$ feet below curb grade except as noted.
 7. All structures shall be brick sewer structures, S-a-104, *except as noted.*
 8. For allowable leakage test, use Formula No. $\frac{1}{2}$ Spec's, Sec. 51.
 9. Manhole tops in unimproved Rights-Of-Way to be 6" above finish grade.

B.M. B.G. 1101
 Elev. 325.916
 Lead & back S.W. Corner conc. base water pump 4'10" E. & Sunset Ave. & 1000' N. of Elliot Ave.



INDEX MAP
 TRACT N^o 16199
 P.C. 3456
 SCALE 1"=300'

SHEET N ^o	PAGES
1	1-4
2	5-7

NO CHARGE FOR CONNECTIONS
 Checked 12-11-55

PROFILE, ALIGNMENT AND GRADE OF
 SANITARY SEWERS
 TO BE CONSTRUCTED IN
 TRACT N^o 16199

PRIVATE CONTRACT NO. 3456
 W. S. 46
 2 SHEETS

Scale: VERT. 1"=4'-0"
 HORIZ. 1"=40'-0"
 APRIL 1955
 PREPARED IN THE OFFICES OF

NATIONAL ENGINEERING & SURVEYING SERVICE

Edward J. Epperson
 Reg. C. E. No. 5228
 FOR LEGEND SEE PLAN NO. S-a-64

NOTE:

Grades to which this improvement is to be constructed are shown on plans and profiles. Grade points for top of curbs, center line of streets, or center line of alleys are shown by circles on profiles. At all points between designated points the grade shall be established so as to conform to a straight line drawn between said designated points.

Elevations are in feet above U.S.G.S. datum or mean sea level.

This drawing and the data hereon are hereby made a part of the specifications.

Work shall be constructed according to specifications on file in the office of the County Engineer and shall be presented only in the presence of the County Engineer.

Before work can be started, the contractor must obtain a permit to excavate in County streets from the L.A. County Road Dept., 108 W. 2nd St. and make a deposit with the County Engineer, Room 324, 293 So. Broadway, sufficient to cover the cost of construction inspection and record plans.

Approval of this plan by the County of Los Angeles does not constitute a representation as to the accuracy of the location of or the existence or non-existence of any underground utility, pipe, or structure within the limits of this project. This note applies to all sheets.

If work is to be done in a State Highway, a permit must be obtained from the State of California, Division of Highways, 120 South Spring Street.

COUNTY OF LOS ANGELES, CALIFORNIA

Approved, John A. Lambie, County Engineer
J.P. Collins
 Sanitation Engineer

Approved, A. M. Ravn
 CHIEF HIGHWAY DIST. NO. 16
A. M. Ravn
 Office Engineer

Checked by: *R.B. Kubus* 12-7-55
 Office of County Engineer, Reg. C. E. No. 7865

P.C. 3456
 PAGE 1

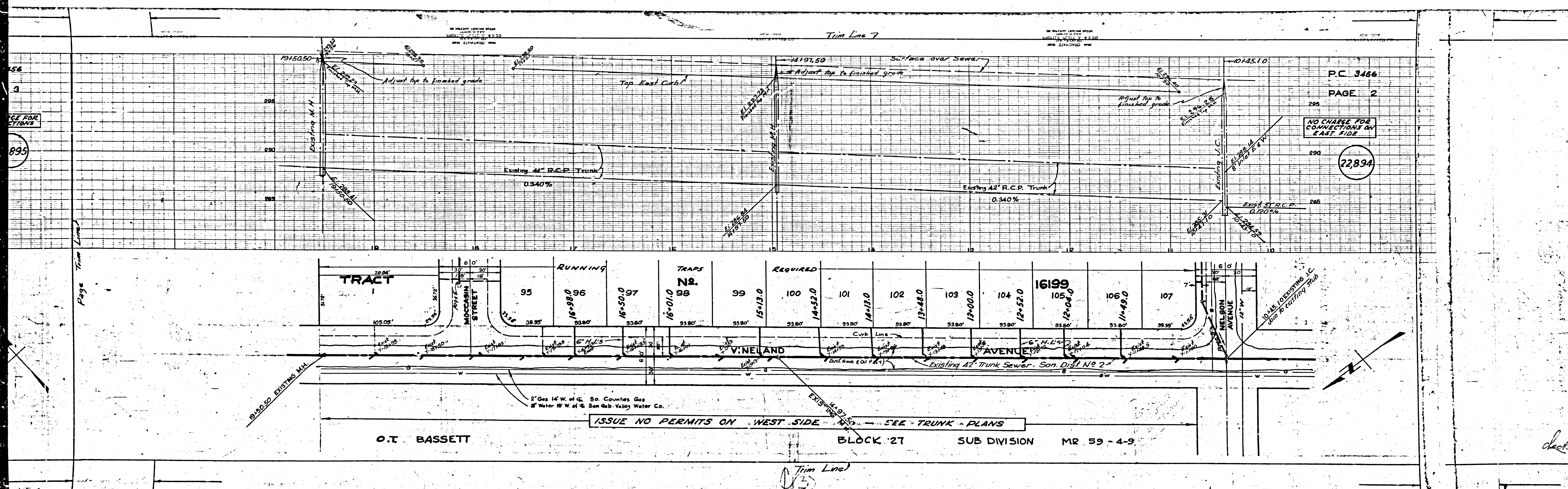
228'13"

TRACT N^o 16199

P.C. 3456

checked 6-15-56 *W. L. ...*

Trim Line

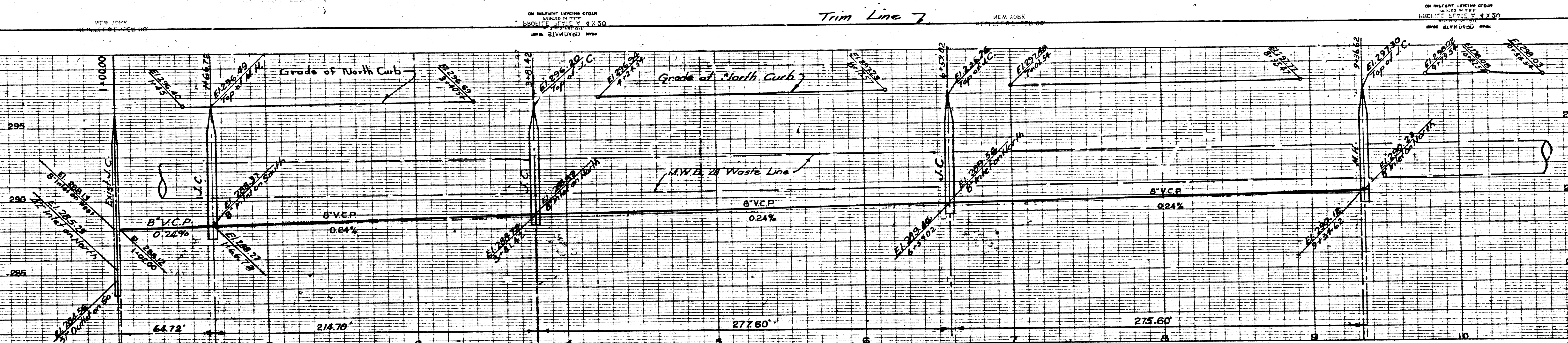


P.C. 3456
PAGE 4

NO CHARGE FOR CONNECTIONS

22,896

Page Trim Line

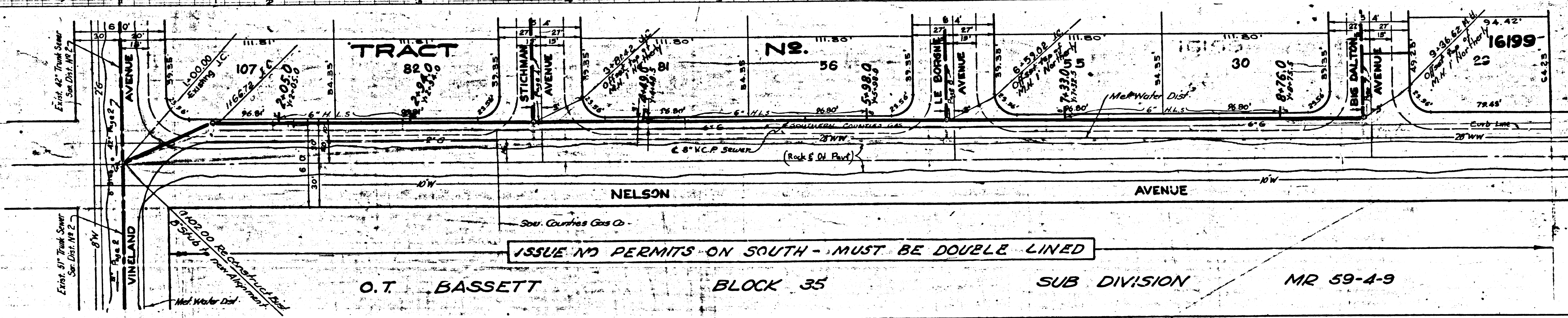


P.C. 3456
PAGE 3

NO CHARGE FOR CONNECTIONS

22,895

Page Trim Line



ISSUE NO PERMITS ON SOUTH - MUST BE DOUBLE LINED

O.T. BASSETT BLOCK 35 SUB DIVISION MR 59-4-9

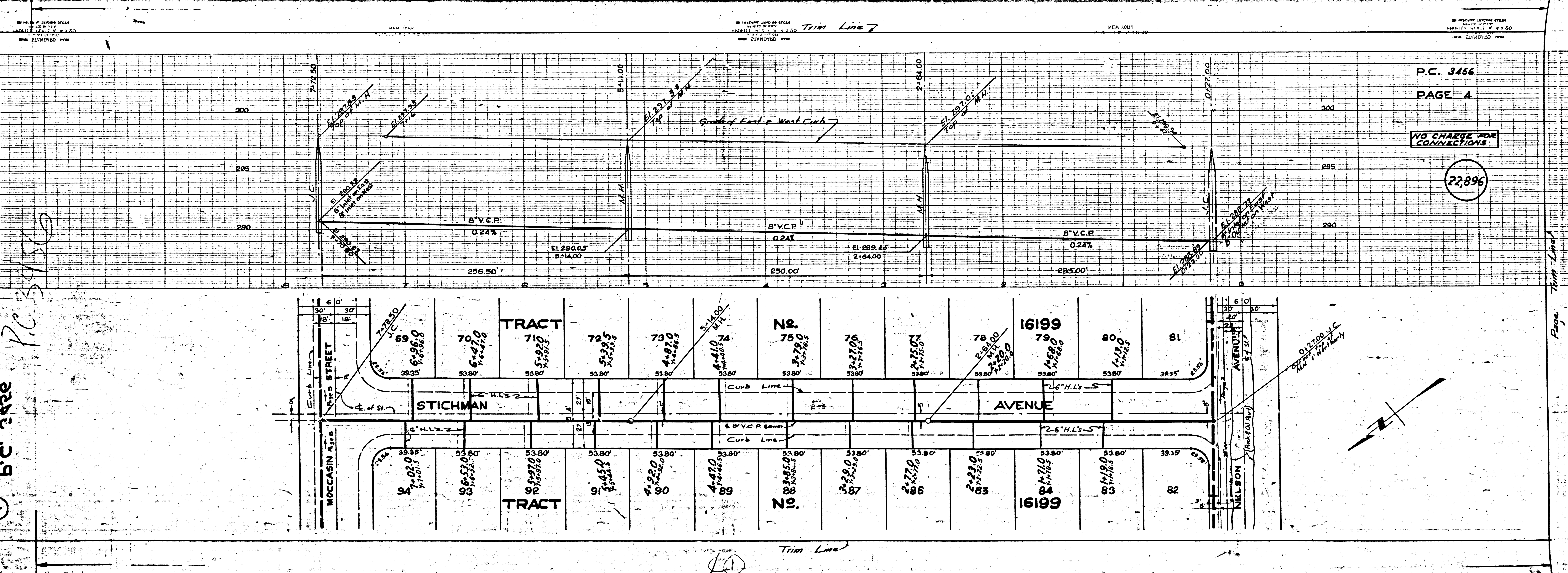
13
Trim Line

GENERAL PART

① 233.2.9

P.C. 3456

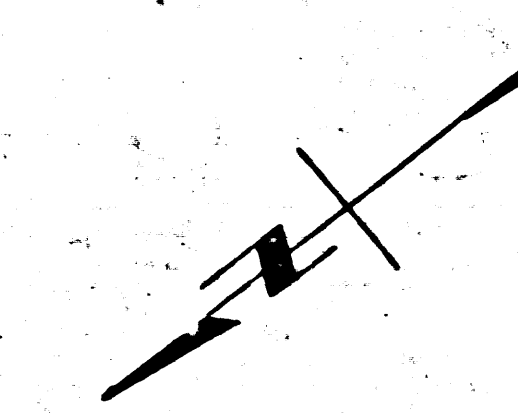
①



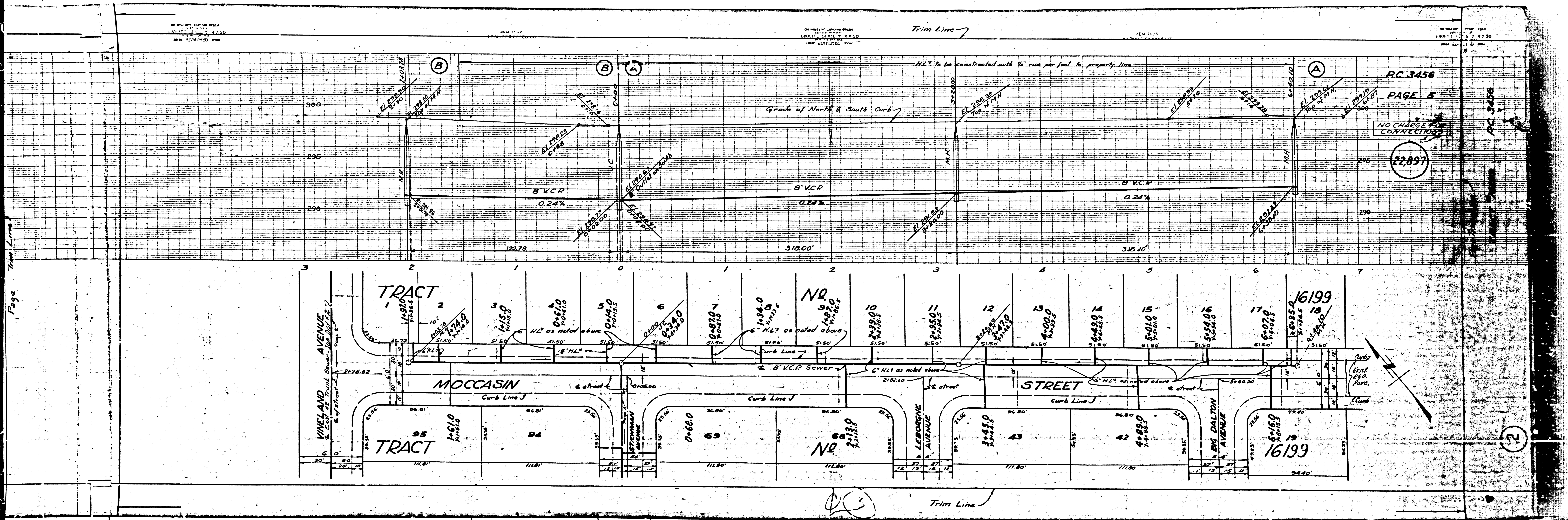
P.C. 3456
PAGE 4

NO CHARGE FOR CONNECTIONS

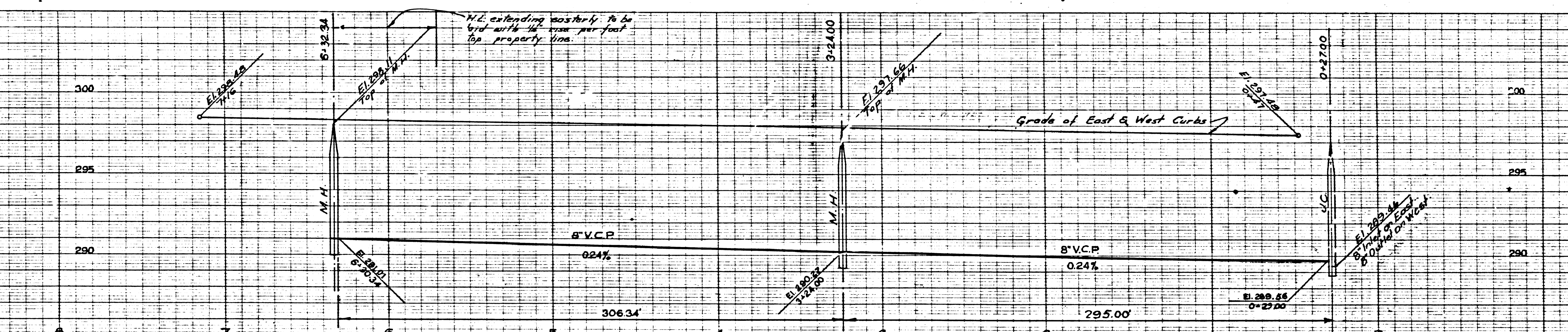
22,896



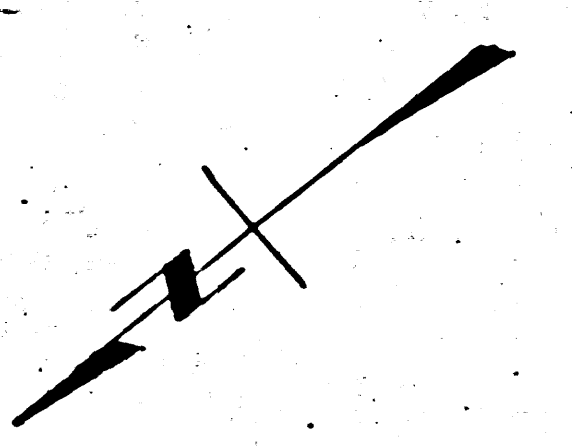
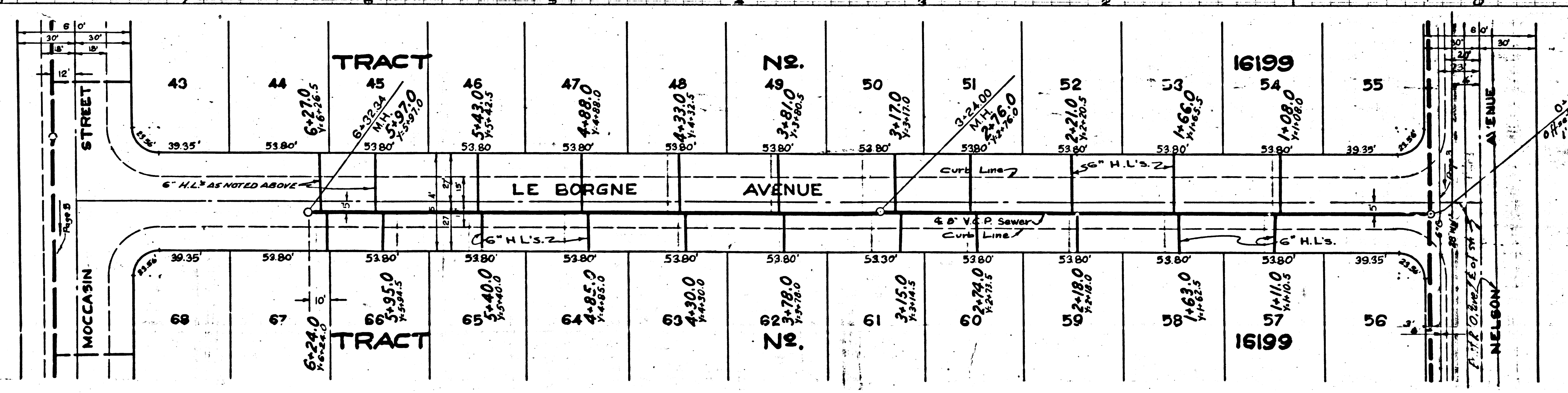
Page: This Plan



Trim Line 7



P.C. 3456
 PAGE 8
 NO CHARGE FOR CONNECTIONS
 22,898



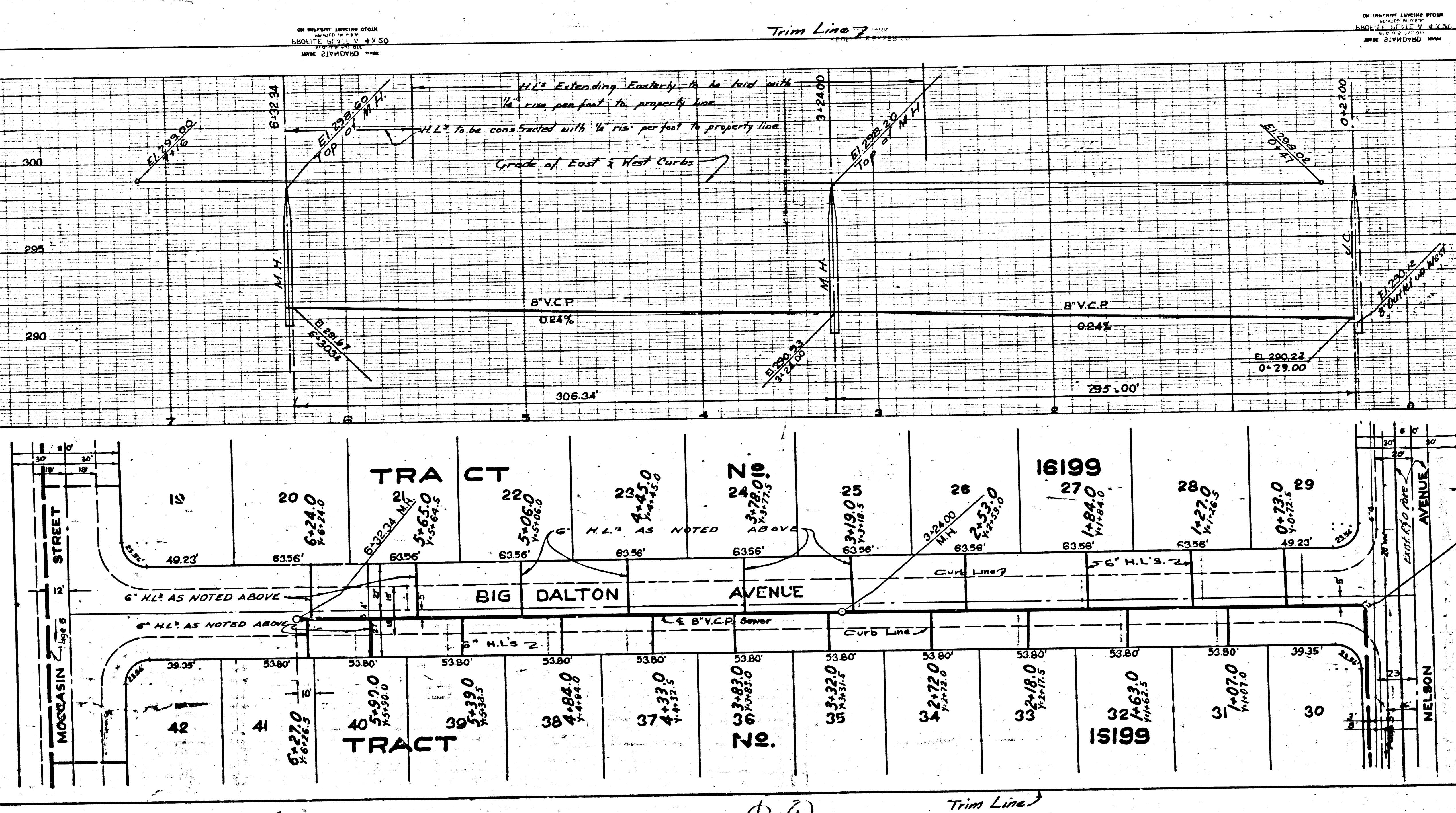
Page Trim Line 7

Page Trim Line 7

Trim Line 7

TRACT 16199

⑤ P.C. 3456



P.C. 3456
PAGE 7

NO CHARGE FOR CONNECTIONS

22,899

Page Trim Line

①