

P.C. 3465
Page 2

LECT CHARGES
INDICATED

(21,299)

to be graded
prior to sewer
city to resurface

3452

B.M. S.G. 1362 El. 308.250 L & T.
N. curb Valley Blvd E. prod. of Turnbull
Canyon Rd. 2' E of E edge of catch basin

SHEET	PAGES
1	1-5
2	6-9

Checked 9-14-55 *McLennan*

Trim Line

NOTE: PUENTE BLDG DIST N° 2

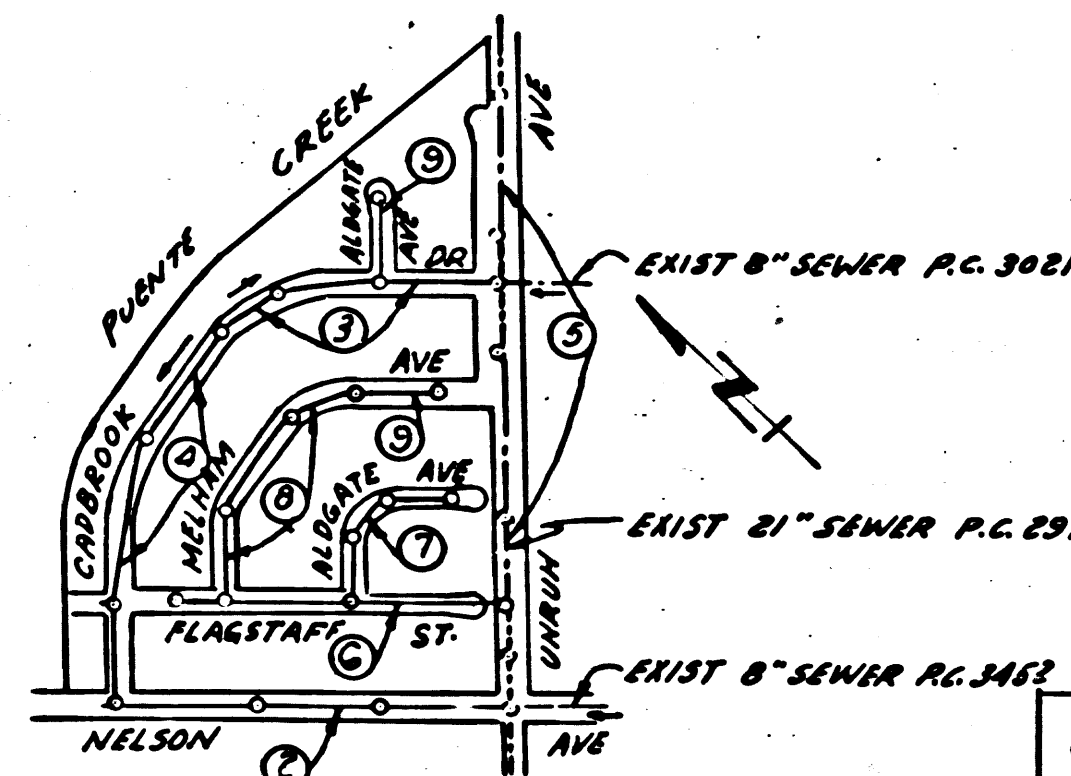
Provide stakes on the property lines or property lines produced at right angles to the sewer line at the center line of each manhole.

No representative of the County Engineer will survey or layout any portion of the work.

The owner or his authorized representative shall furnish the County Engineer with grade sheets and stations for all house laterals and Y branches and shall provide stakes for them at their proper locations with stationing plainly marked. Any change in location shall be requested in writing by the owner or his representative.

No revisions shall be made in these plans without the approval of the County Engineer.

1. Use standard manhole frames and covers, S-a-117.
2. Use standard strength pipe except as noted.
3. Use cement mortar for all vitrified clay pipe joints.
4. Resurface all trench within paved area to meet L.A. County Road Dept. or California State Highway Dept. requirements in accordance with permit.
5. Encase four feet of sewer at points of interference with poles, S-a-119.
6. House laterals to be constructed with inverts at property line 6 feet below curb grade except as noted.
7. All structures shall be brick sewer structures, S-a-104.
8. For allowable leakage test, use Formula No. 1, Spec's. Sec. 51.
9. Manhole tops in unimproved Rights-Of-Way to be 6" above finish grade.



INDEX MAP
TRACT NO 21224
P.C. 3465
Scale: 1"=600'

COLLECT CHARGES
AS INDICATED
L. Curtis 5-2-55

Trim Line

PROFILE, ALIGNMENT AND GRADE OF
SANITARY SEWERS
TO BE CONSTRUCTED IN
TRACT N° 21224

P.C. 3465

PAGE 1

(21,298)

PRIVATE CONTRACT NO. 3465
W. S. 38

TWO SHEETS

Scale: VERT. 1"=40'
HORIZ. 1"=40' APRIL 1955

PREPARED IN THE OFFICES OF
SECURITY ENGINEERING CO.

By *Robert H. Sebring*
Reg. C. E. No. 8109

FOR LEGEND SEE PLAN NO. S-a-64

NOTE:

Grades to which this improvement is to be constructed are shown on plans and profiles. Grade points for top of curbs, center line of streets, or center line of alleys are shown by circles on profiles. At all points between designated points the grade shall be established so as to conform to a straight line drawn between said designated points.

Elevations are in feet above U.S.G.S. datum or mean sea level.
This drawing and the data hereon are hereby made a part of the specifications.

Work shall be constructed according to specifications on file in the office of the County Engineer and shall be prosecuted only in the presence of the County Engineer.

Before work can be started, the contractor must obtain a permit to excavate in County streets from the L.A. County Road Dept., 108 W. 2nd St. and make a deposit with the County Engineer, Room 324, 253 South Broadway, sufficient to cover the cost of construction inspection and record plans.

Approval of this plan by the County of Los Angeles does not constitute a representation as to the accuracy of the location of or the existence or non-existence of any underground utility, pipe, or structure within the limits of this project. This note applies to all sheets.

If work is to be done in a State Highway, a permit must be obtained from the State of California, Division of Highways, 120 South Spring Street.

COUNTY OF LOS ANGELES, CALIFORNIA

Approved, William J. Fox, County Engineer

Approved, A. M. Rawn

By *A. P. Collins*
Sanitation Engineer

CHIEF ENGR. CO. SAN. DIST. NO. 15
By *E. P. O'Connell*
4457, Office Engineer

Checked by *Pat Wilson* 6-10-55
Office of County Engineer, Reg. C. E. No. 7860

TRACT N° 21224

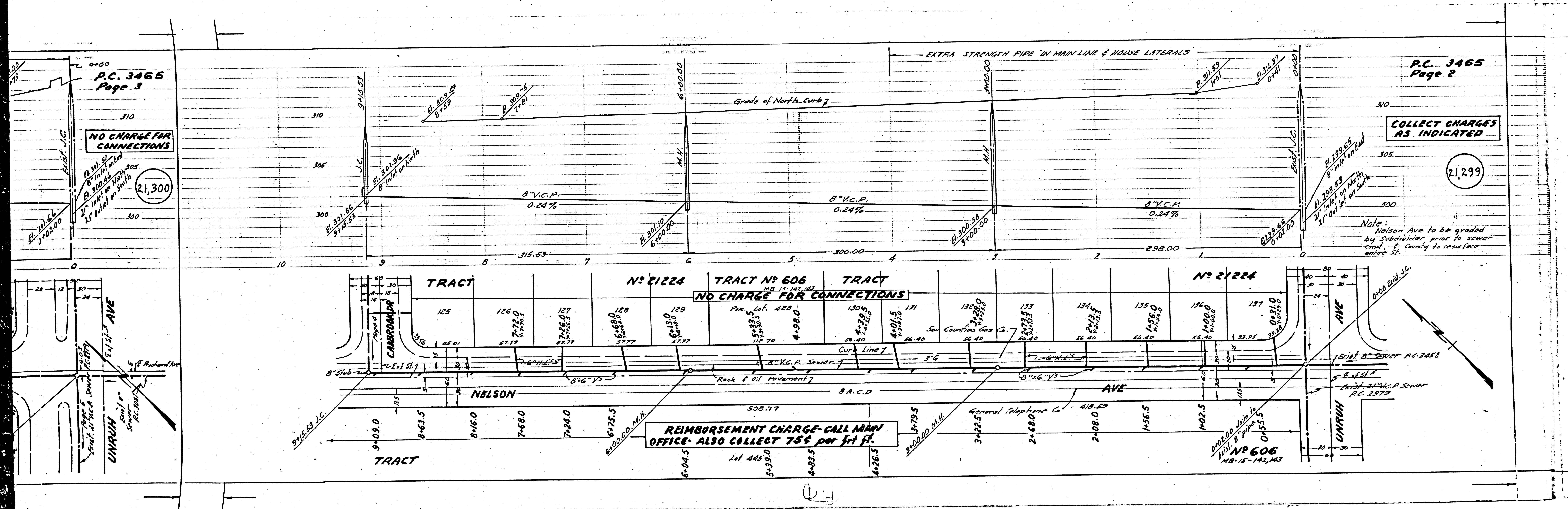
P.C. 3465

Trim Line

COLLECT CHARGES
AS INDICATED

21,299

Note:
Nelson Ave to be graded
by Subdivider prior to sewer
const. & County to resurface
entire St.



NO CHARGE FOR
CONNECTIONS

21,300

REIMBURSEMENT CHARGE - CALL MAIN
OFFICE - ALSO COLLECT 75¢ per ft. ft.

Lot 44590

P.C. 3465
Page 4

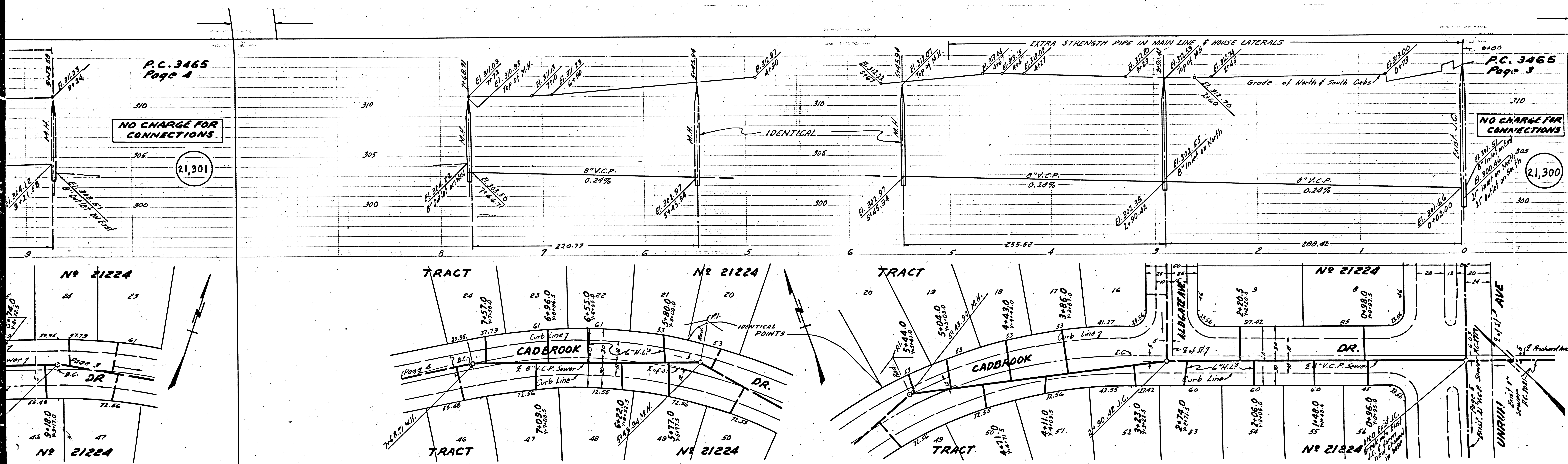
NO CHARGE FOR CONNECTIONS

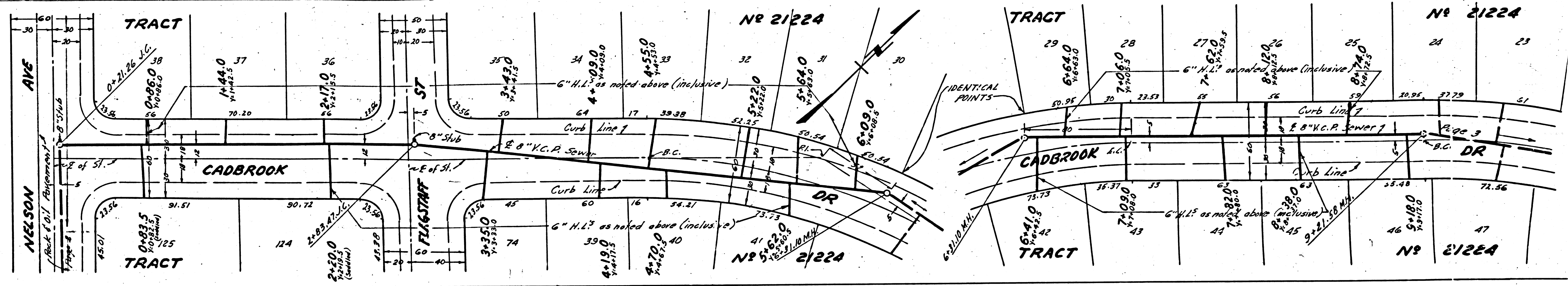
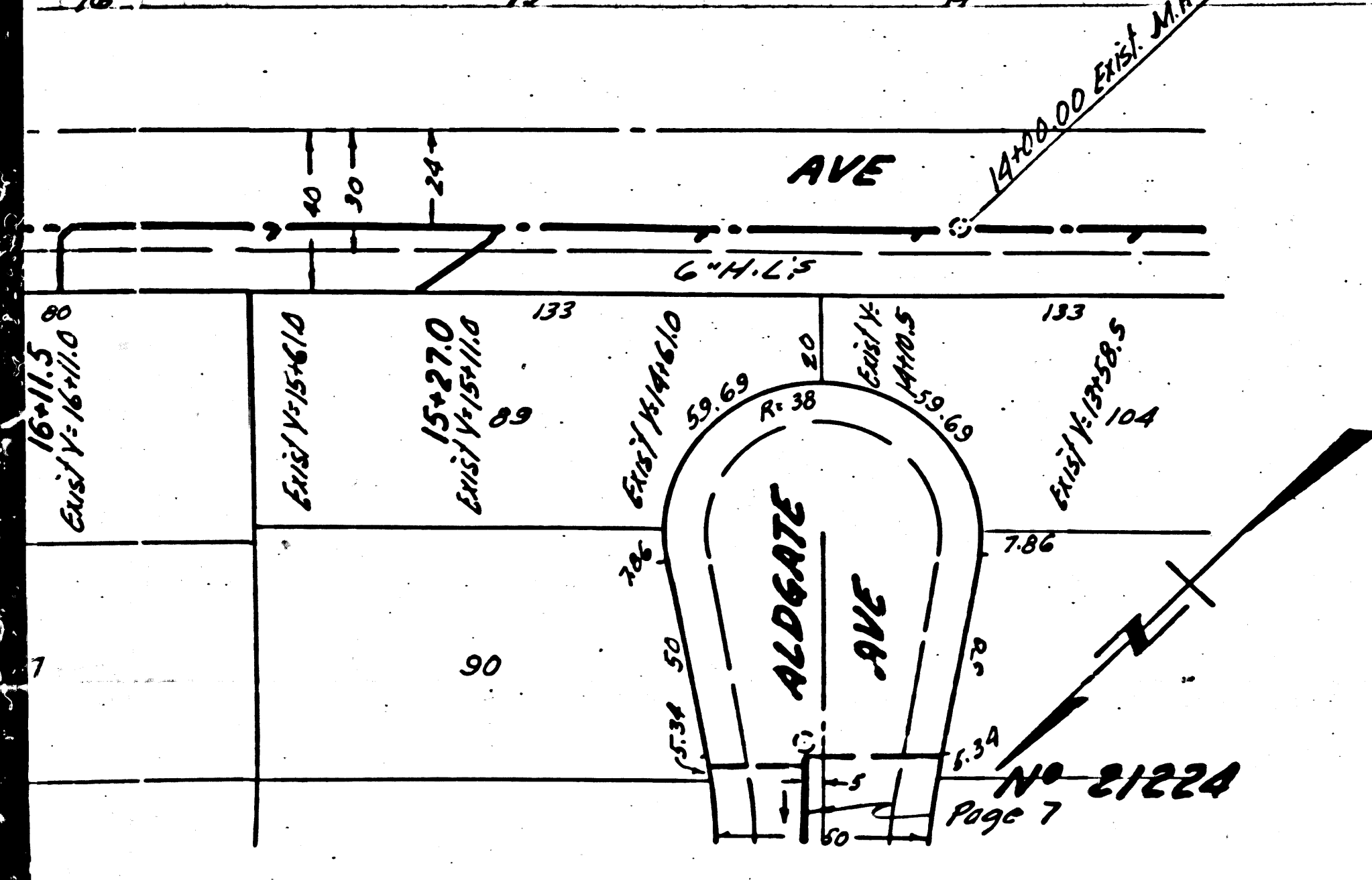
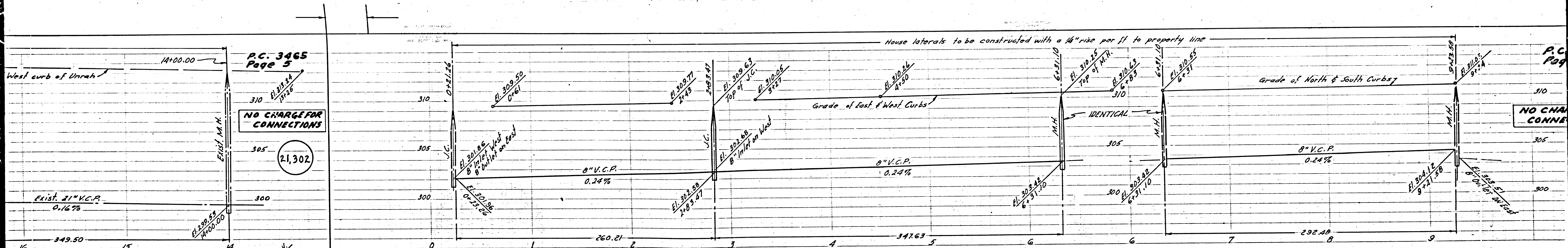
21,301

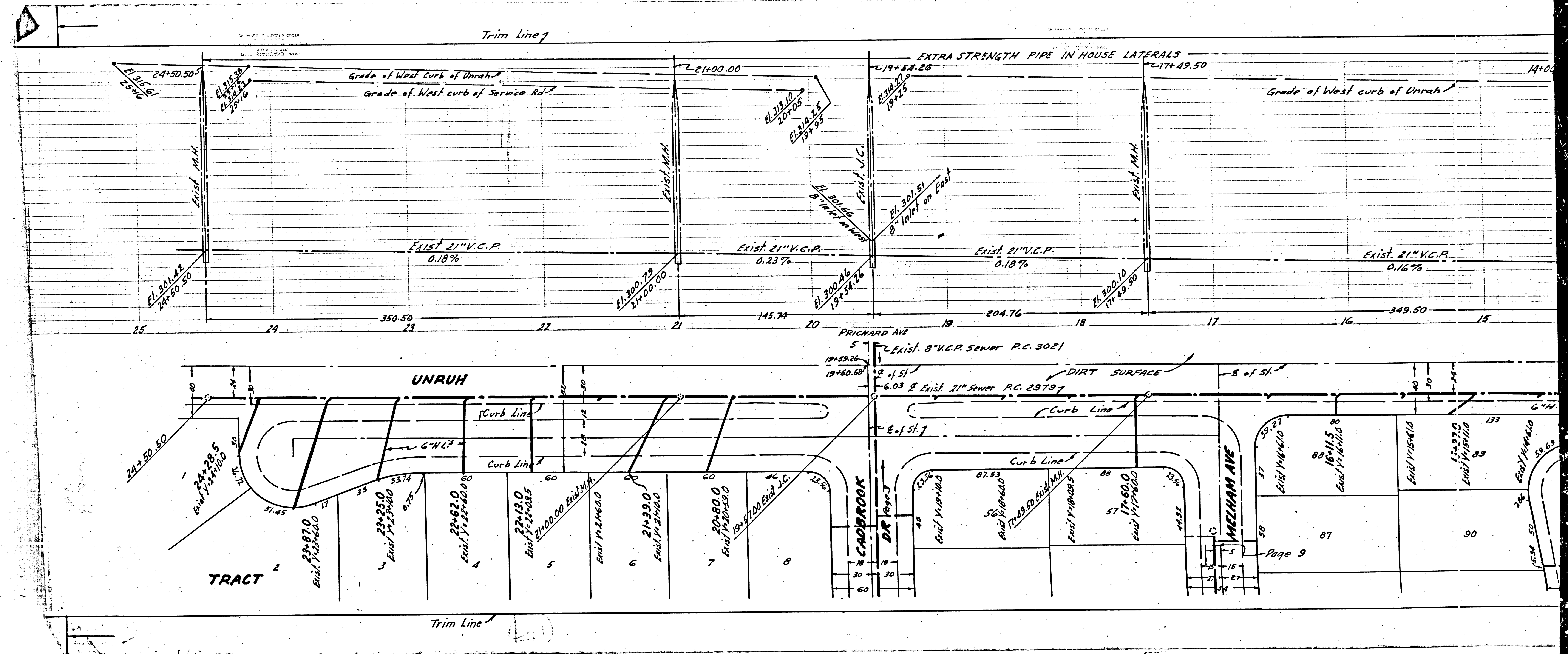
P.C. 3465
Page 3

NO CHARGE FOR CONNECTIONS

21,300







PC 3465

PAGE 7

CHARGE FOR CONNECTIONS

21,304

PC 3465

PAGE 6

310

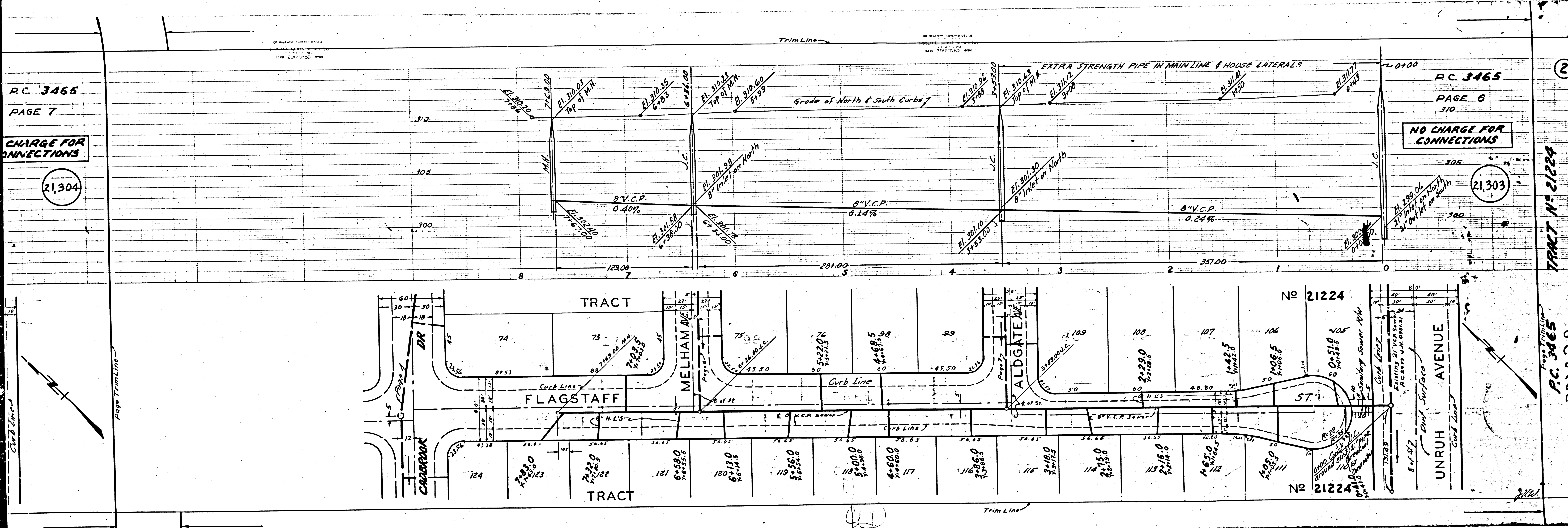
NO CHARGE FOR CONNECTIONS

21,303

TRACT No 21224

PC 3465

3

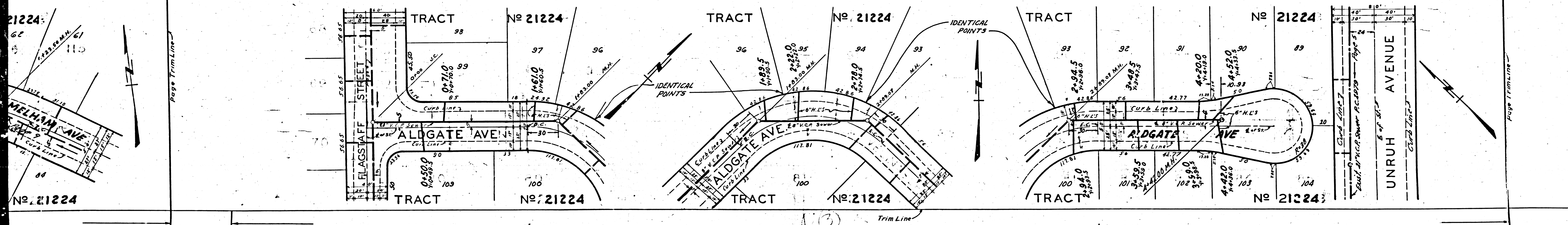
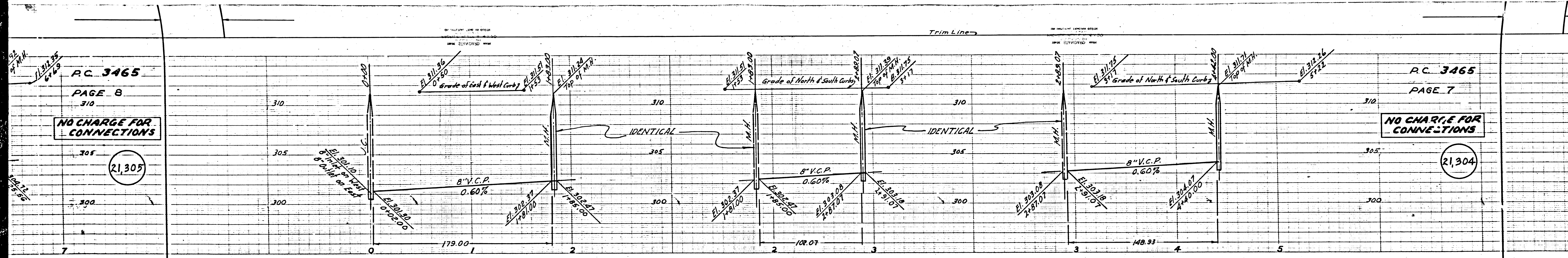


Trim Line

Trim Line

Page Trimline

Page Trimline

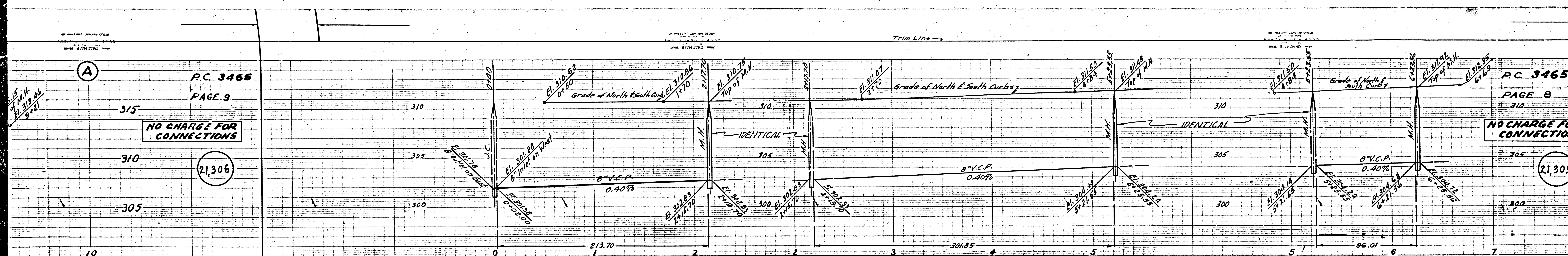


P.C. 3465
 PAGE 8
 310
 NO CHARGE FOR CONNECTIONS
 305
 300
 21,305

P.C. 3465
 PAGE 7
 NO CHARGE FOR CONNECTIONS
 310
 305
 300
 21,304

21224
 62
 110
 MELHAM AVE
 64
 No. 21224

21224
 24
 UNRUH AVENUE
 21224
 Page Trim Line



PC 3465
PAGE 9

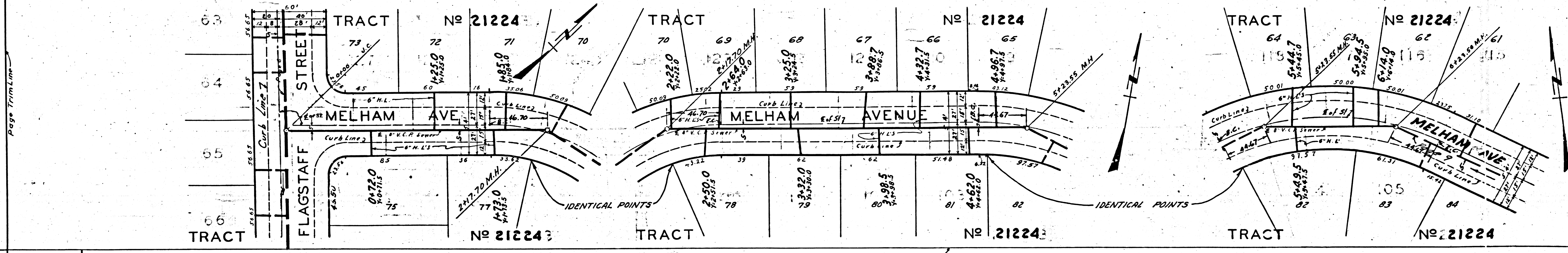
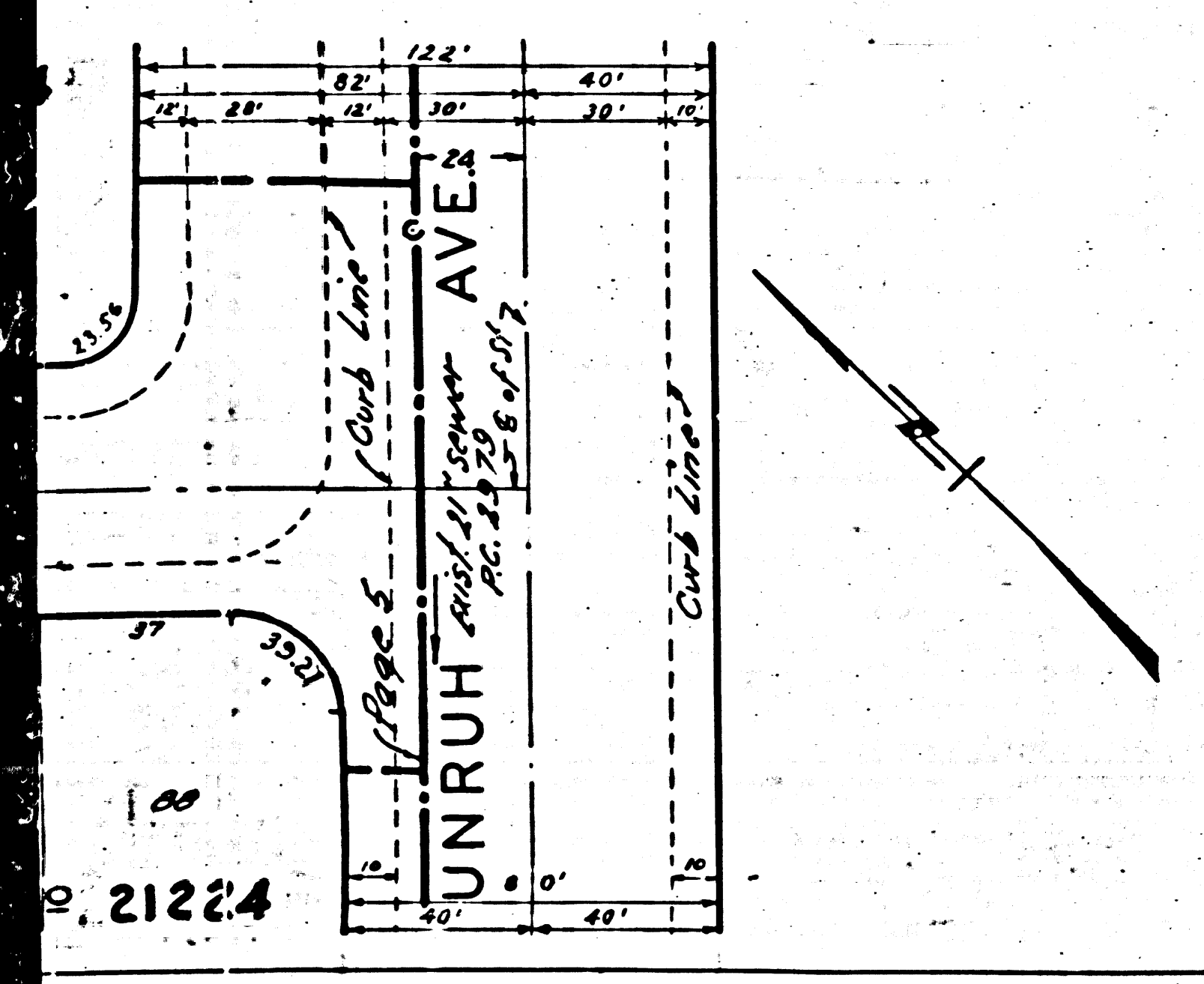
NO CHARGE FOR CONNECTIONS

(21,306)

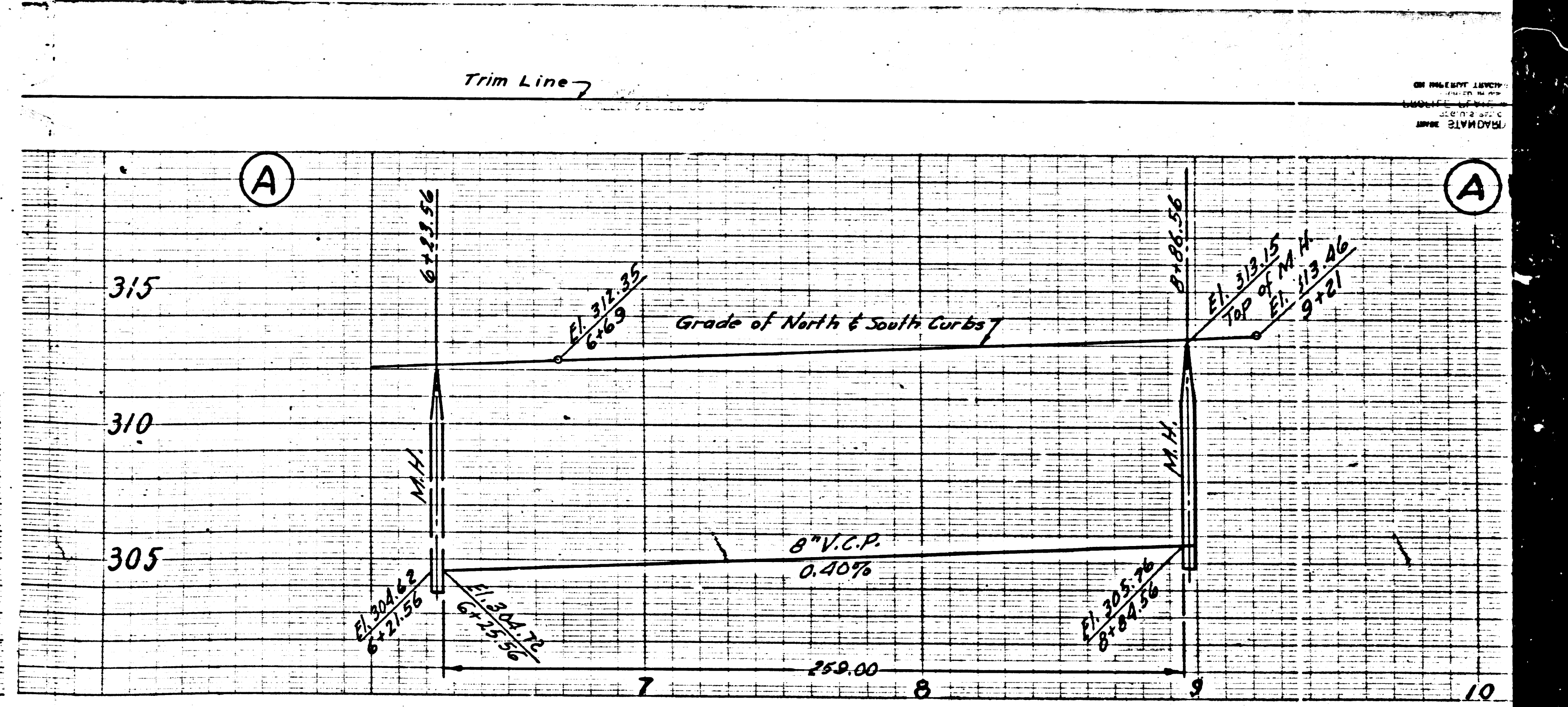
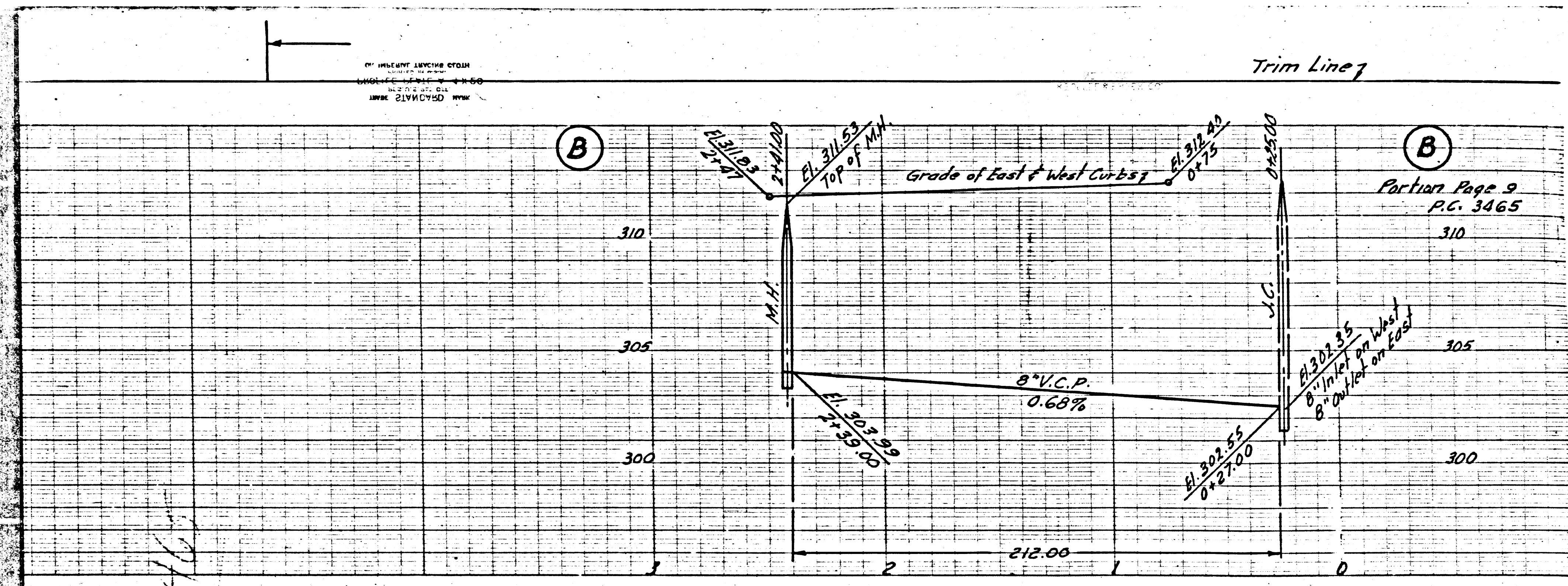
PC 3465
PAGE 8

NO CHARGE FOR CONNECTIONS

(21,305)



(2)



PC 3465

