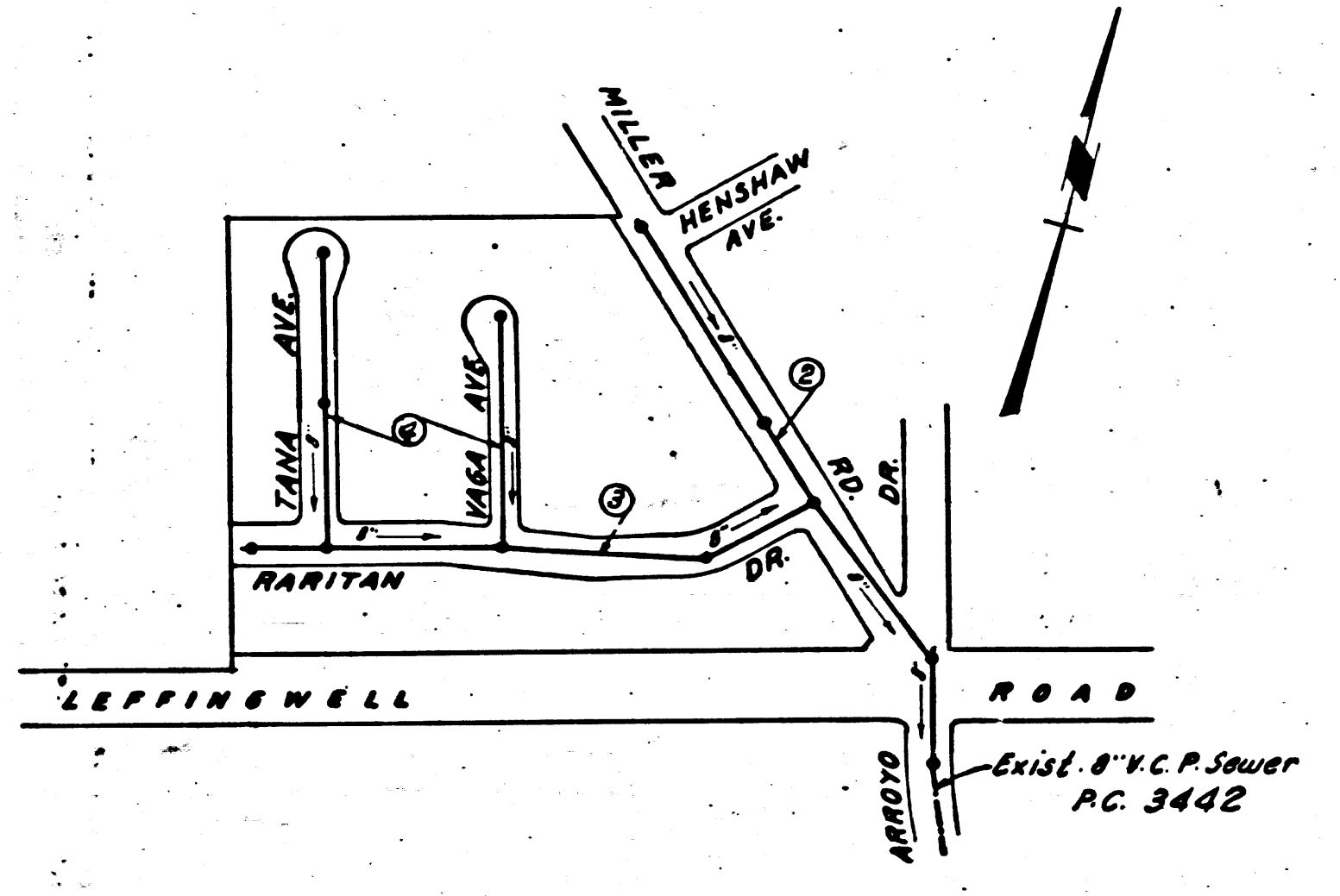


E 2
469
ONS
716



INDEX MAP
SCALE: 1"=300' TR. No. 20795
P.C. 3469

checked 6-21-55 *W. J. Fox*

B.M. S.Y. 1155 cut spike @
Intersection LEFFINGWELL RD.
and ARROYO DR.
ELEV. 186.537

SHEET NO.	PAGES
1	1-4

NO CHARGE FOR
CONNECTIONS
Richardson 4-28-55

Trim Line
WHITTIER BLDG. DIST. No. 11

- NOTE:**
Provide stakes on the property lines or property lines produced at right angles to the sewer line at the center line of each manhole.
No representative of the County Engineer will survey or layout any portion of the work.
The owner or his authorized representative shall furnish the County Engineer with grade sheets and stationing for all house laterals and Y branches and shall provide stakes for them at their proper locations with stationing plainly marked. Any change in location shall be requested in writing by the owner or his representative.
No revisions shall be made in these plans without the approval of the County Engineer.
1. Use standard manhole frames and covers, S-a-117, except as noted.
 2. Use standard strength pipe except as noted.
 3. Use cement mortar for all vitrified clay pipe joints, except as noted.
 4. Resurface all trench within paved area to meet L.A. County Road Dept. or California State Highway Dept. requirements in accordance with permit.
 5. Excuse four feet of sewer at points of interference with poles, S-a-119.
 6. House laterals to be constructed with inverts at property line 6 feet below curb grade except as noted.
 7. All structures shall be brick sewer structures, S-a-104, except as noted.
 8. For allowable leakage test, use Formula No. 1 Spec's., Sec. 51.
 9. Manhole tops in unimproved Rights-Of-Way to be 6" above finish grade.

PROFILE, ALIGNMENT AND GRADE OF
SANITARY SEWERS
TO BE CONSTRUCTED IN

TRACT No. 20795

PRIVATE CONTRACT NO. 3469
W. S. 34
1 SHEET

Scale: VERT. 1"=4'
HORIZ. 1"=40' APR -1955
PREPARED IN THE OFFICES OF

KEMMERER ENGINEERING CO. INC.
Wm. C. Thomson
Reg. C. E. No. 8244
FOR LEGEND SEE PLAN NO. S-a-64

NOTE:
Grades to which this improvement is to be constructed are shown on plans and profiles. Grade points for top of curbs, center line of streets, or center line of alleys are shown by circles on profiles. At all points between designated points the grade shall be established so as to conform to a straight line drawn between said designated points.
Elevations are in feet above U.S.G.S. datum or mean sea level.
This drawing and the data hereon are hereby made a part of the specifications.
Work shall be constructed according to specifications on file in the office of the County Engineer and shall be prosecuted only in the presence of the County Engineer.
Before work can be started, the contractor must obtain a permit to excavate in County streets from the L.A. County Road Dept., 108 W. 2nd St. and make a deposit with the County Engineer, 733 L.A. County Engineering Building, sufficient to cover the cost of construction inspection and record plans.
Approval of this plan by the County of Los Angeles does not constitute a representation as to the accuracy of the location of or the existence or non-existence of any underground utility, pipe, or structure within the limits of this project. This note applies to all sheets.
If work is to be done in a State Highway, a permit must be obtained from the State of California, Division of Highways, 120 South Spring Street.

COUNTY OF LOS ANGELES, CALIFORNIA
Approved, William J. Fox, County Engineer
W. J. Fox
Sanitation Engineer
Approved, A. M. Ravn
CHIEF ENGR. CO. SAN. DIST. NO. 18
A. M. Ravn
Office Engineer
Checked by: *Richardson 4-28-55*
Office of County Engineer, Reg. C. E. No. 7860

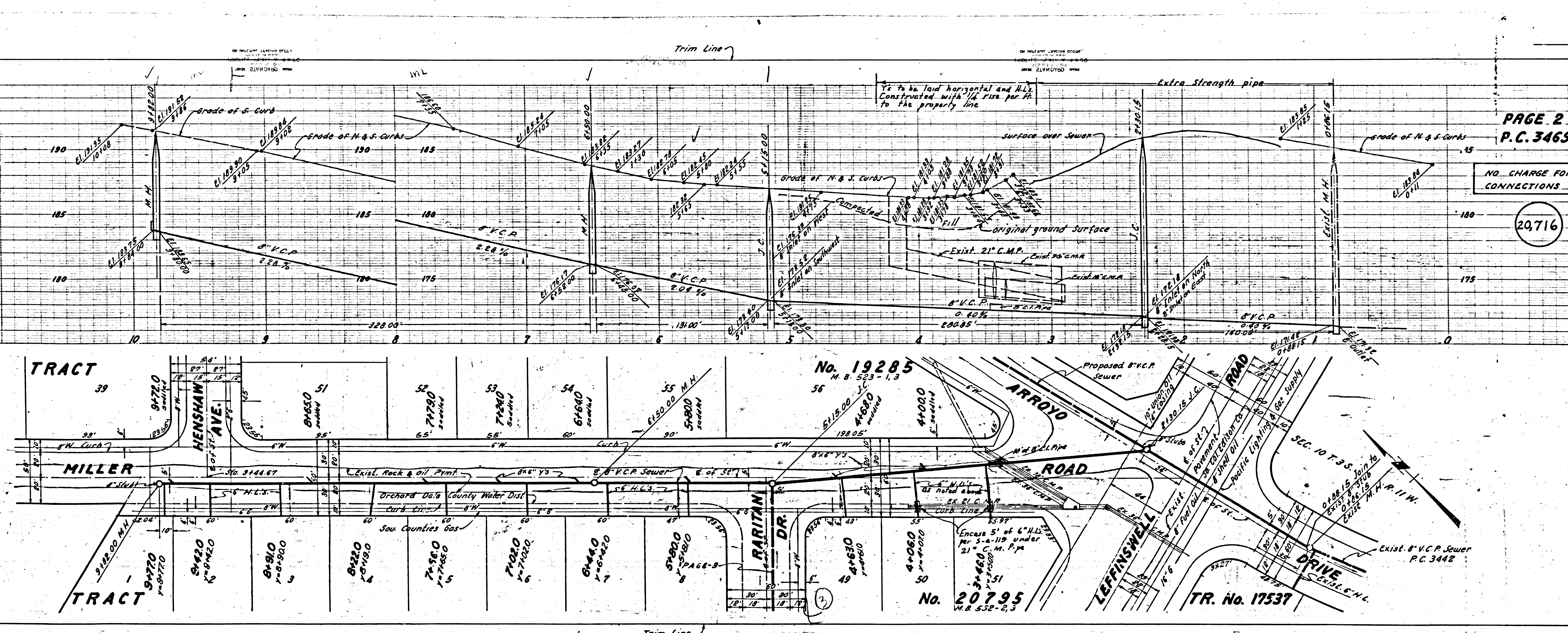
PAGE 1
P.C. 3469

20,715

TRACT No. 20795

REVISIONS
P.C. 3469

11



PAGE 2
P.C. 3469

NO CHARGE FOR
CONNECTIONS

20,716

No. 19285
M.B. 523-1,3

No. 20795
M.B. 552-2,3

TR. No. 17537

SEC. 10 T. 3 S. R. 11 W.

Exist. 8" V.C.P. Sewer
P.C. 3442

Encase 5' of 6" V.C.P. with 21" C.M.P. in 12' trench

Proposed 8" V.C.P. Sewer

ARROYO ROAD

ROAD

LEFFINSWELL DRIVE

Trim Line

Trim Line

Extra Strength pipe

To be laid horizontal and H.L. constructed with 1/4" rise per ft. to the property line

Surface over Sewer

Original ground surface

Exist. 21" C.M.P.

8" V.C.P. 0.40%

8" V.C.P. 0.40%

8" V.C.P. 0.40%

8" V.C.P. 0.40%

8" V.C.P. 0.40%

8" V.C.P. 0.40%

8" V.C.P. 0.40%

8" V.C.P. 0.40%

8" V.C.P. 0.40%

8" V.C.P. 0.40%

8" V.C.P. 0.40%

8" V.C.P. 0.40%

8" V.C.P. 0.40%

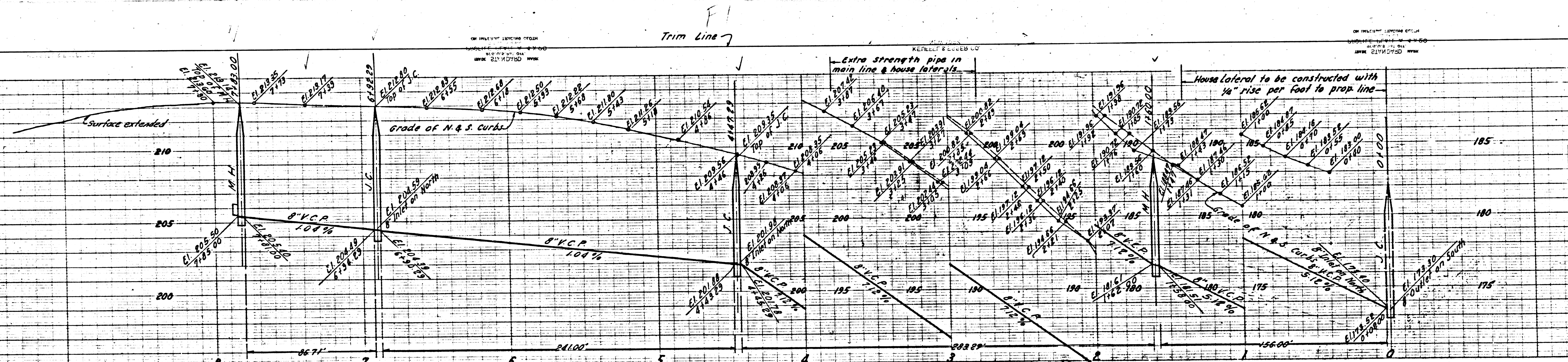
8" V.C.P. 0.40%

8" V.C.P. 0.40%

8" V.C.P. 0.40%

8" V.C.P. 0.40%

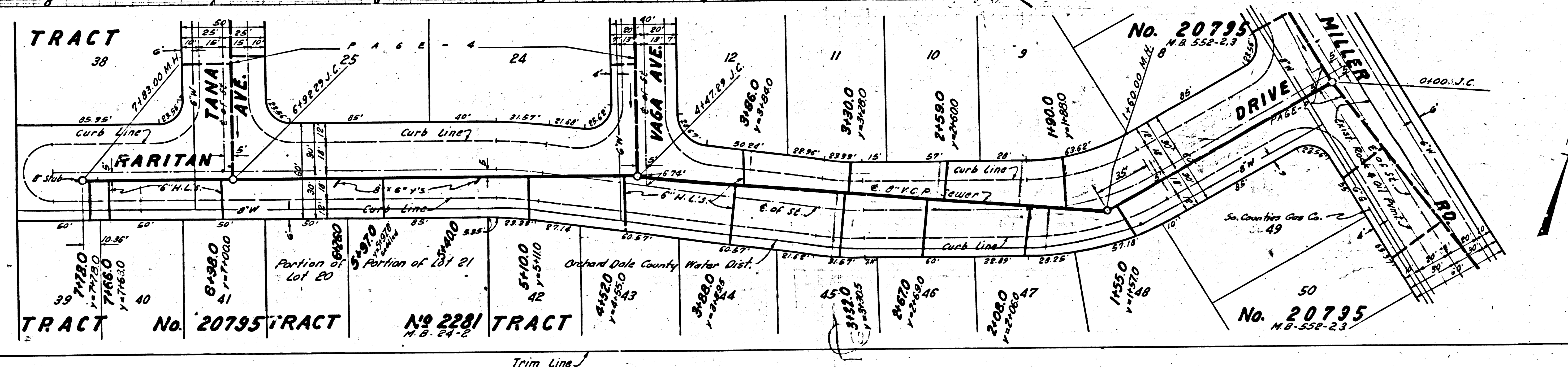
8" V.C.P. 0.40%



PAGE 3
P.C. 3469

NO CHARGE FOR
CONNECTIONS

20,717



TRACT No. 20795

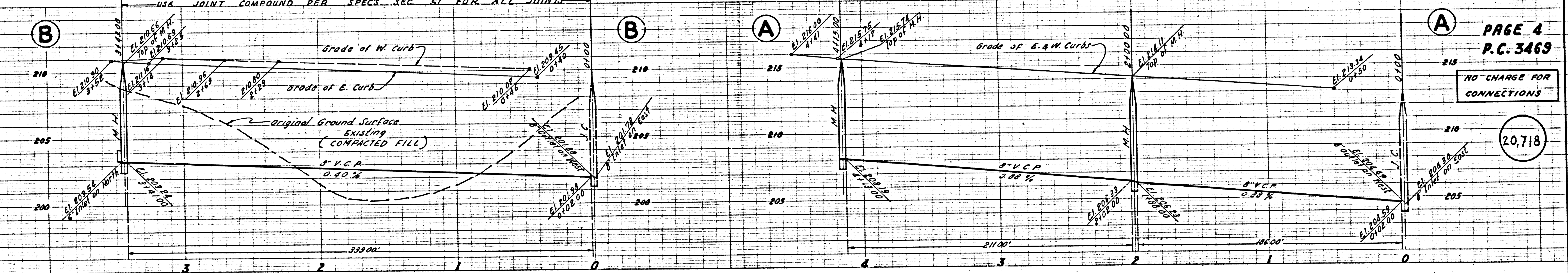
TRACT No. 2221

TRACT No. 20795

Trim Line

USE JOINT COMPOUND PER SPECS. SEC. 51 FOR ALL JOINTS

ON WELDED LAP JOINTS
 LENGTH SHALL BE 12" MIN.
 SPACING SHALL BE 24" MAX.

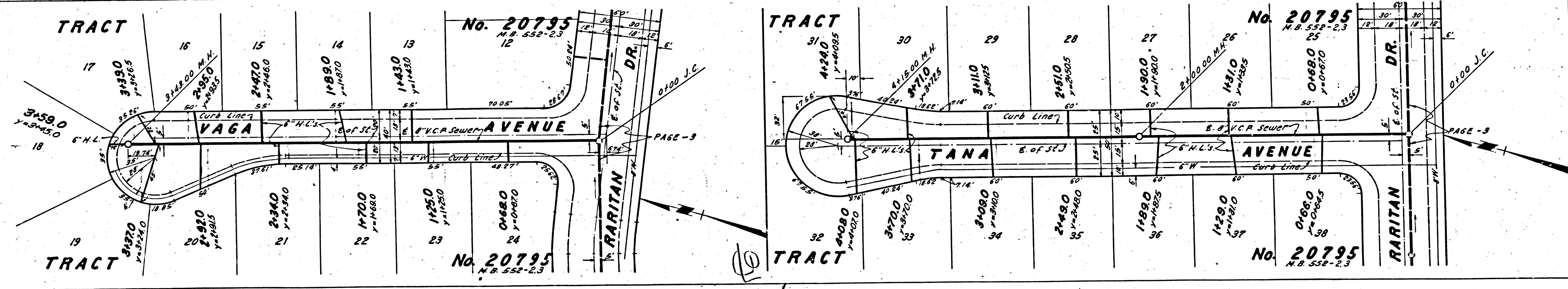


PAGE 4
P.C. 3469

NO CHARGE FOR CONNECTIONS

20,718

PC 3469



Trim Line