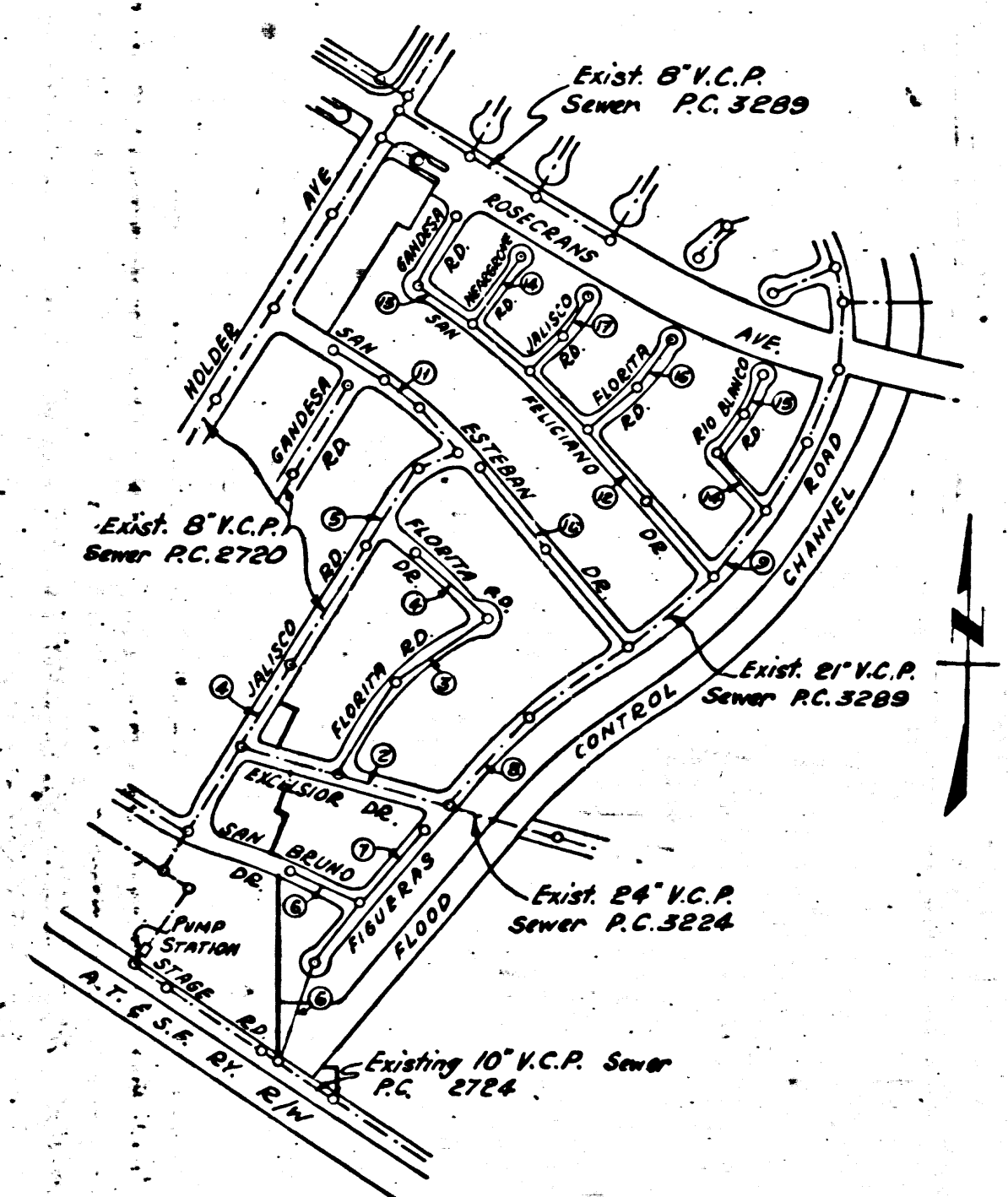


3471	2
Scale	
FOR	
TABLE	
2	
3	

Bench Mark: B.M. 3-2 Std. Co. Surv. Mon. marked with 16" set in concrete 16" below surface on approx. E of Lotwater line. 72° N of E of Slope Ed. in wall protected by cast iron cover, per C.S.F.B. 1204-a L.A. Co. 1952 Adj. El. 109.862



INDEX MAP
SCALE: 1" = 600'
TRACT NO 20739
P.C. 3471

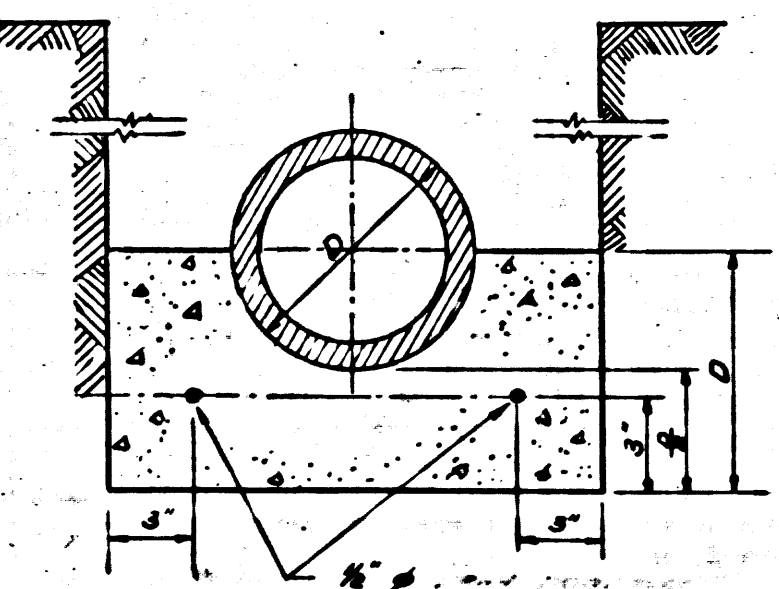
SHEET	PAGE
1	1-5
2	6-9
3	10-13
4	14-17

checked 12-28-55 *M. L. ...*

BELLFLOWER BLDG. DIST. NO 4

- NOTE:**
Provide stakes on the property lines or property lines produced at right angles to the sewer line at the center line of each manhole.
No representative of the County Engineer will survey or layout any portion of the work.
The owner or his authorized representative shall furnish the County Engineer with grade sheets and stations for all house laterals and Y branches and shall provide stakes for them at their proper locations with stationing plainly marked. Any change in location shall be requested in writing by the owner or his representative.
No revisions shall be made in these plans without the approval of the County Engineer.
1. Use standard manhole frames and covers, S-a-117, *except as noted.*
 2. Use standard strength pipe except as noted.
 3. Use cement mortar for all vitrified clay pipe joints, *except as noted.*
 4. Resurface all trench within paved area to meet L.A. County Road Dept. or California State Highway Dept. requirements in accordance with permit.
 5. Encase four feet of sewer at points of interference with poles, S-a-119.
 6. House laterals to be constructed with inverts at property line _____ 6 _____ feet below curb grade except as noted.
 7. All structures shall be brick sewer structures, S-a-104, *except as noted.*
 8. For allowable leakage test, use Formula No. _____, Specs., Sec. 51.
 9. Manhole tops in unimproved Rights-Of-Way to be 6" above finish grade.
 10. *The contractor shall satisfy himself of all structures and shall be responsible for their locations.*
 - a. No construction will be permitted in filled areas unless acceptable certification is submitted to the Construction Division of the County Engineering Department that compaction is greater than 80%.
 - b. If compaction is less than 80%, the sewer must be created as shown on plans. (See detail Page 1.)
 - c. If compaction is greater than 80%, creating is not required. However, joint compound must be substituted for cement mortar for all joints in filled areas.

NO CHARGE FOR CONNECTIONS
Reference S-19-55



DETAIL OF CONCRETE GRADE IN COMPACTED FILL
NO SCALE

PROFILE, ALIGNMENT AND GRADE OF
SANITARY SEWERS
TO BE CONSTRUCTED IN

TRACT NO 20739

PRIVATE CONTRACT NO. 3471
W. S. 34
4 SHEETS

Scale: VERT. 1" = 4'
HORIZ. 1" = 40' APRIL 1955

PREPARED IN THE OFFICES OF
WM. H. FAIR JR. INC.
W. H. Fair Jr.

Reg. C. E. No. 6583
FOR LEGEND SEE PLAN NO. S-a-64

NOTE:
Grades to which this improvement is to be constructed are shown on plans and profiles. Grade points for top of curbs, center line of streets, or center line of alleys are shown by circles on profiles. At all points between designated points the grade shall be established so as to conform to a straight line drawn between said designated points.
Elevations are in feet above U.S.G.S. datum or mean sea level.
This drawing and the data hereon are hereby made a part of the specifications.
Work shall be constructed according to specifications on file in the office of the County Engineer and shall be prosecuted only in the presence of the County Engineer.
Before work can be started, the contractor must obtain a permit to excavate in County streets from the L.A. County Road Dept., 108 W. 2nd St. and make a deposit with the County Engineer, room 284, 253 South Broadway, sufficient to cover the cost of construction inspection and record plans.
Approval of this plan by the County of Los Angeles does not constitute a representation as to the accuracy of the location of or the existence or non-existence of any underground utility, pipe, or structure within the limits of this project. This note applies to all sheets.
If work is to be done in a State Highway, a permit must be obtained from the State of California, Division of Highways, 120 South Spring Street.

COUNTY OF LOS ANGELES, CALIFORNIA
Approved, William J. Fox, County Engineer
Approved, A. M. Rawm
CHIEF ENGR. CO. SAN. DIST. NO. 18
By *A. P. Collins* Sanitation Engineer
By *J. P. Williams* Office Engineer
Checked by *R. L. ...* 5-19-55
Office of County Engineer, Reg. C. E. No. 7860

P.C. 3471
Page 1
Double Scale

22,001

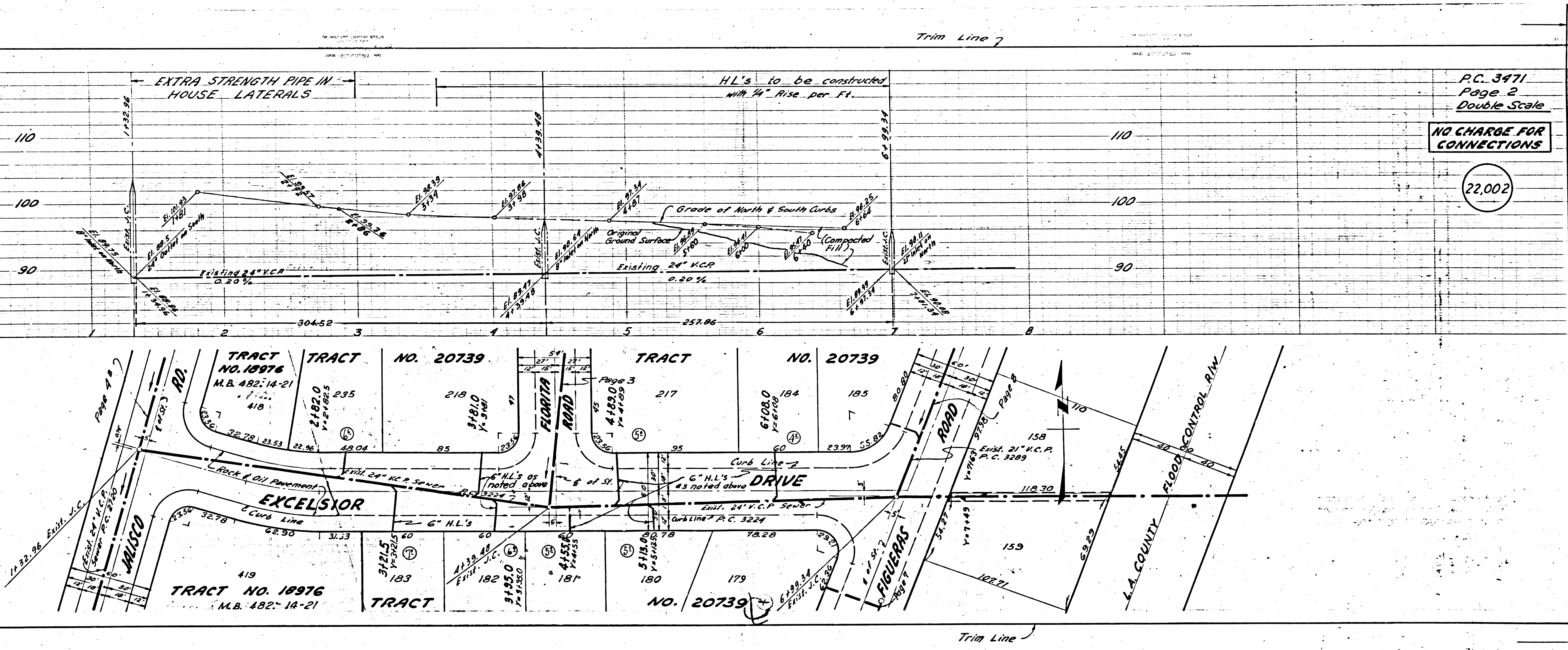
(17)

TRACT NO 20739
P.C. 3471
11439
APR 27 1955

P.C. 3471
Page 3
Double Scale

NO CHARGE FOR CONNECTIONS

2,003



P.C. 3471
Page 2
Double Scale

NO CHARGE FOR CONNECTIONS

22,002

(A) P.C. 3471
Page 4
Double Scale

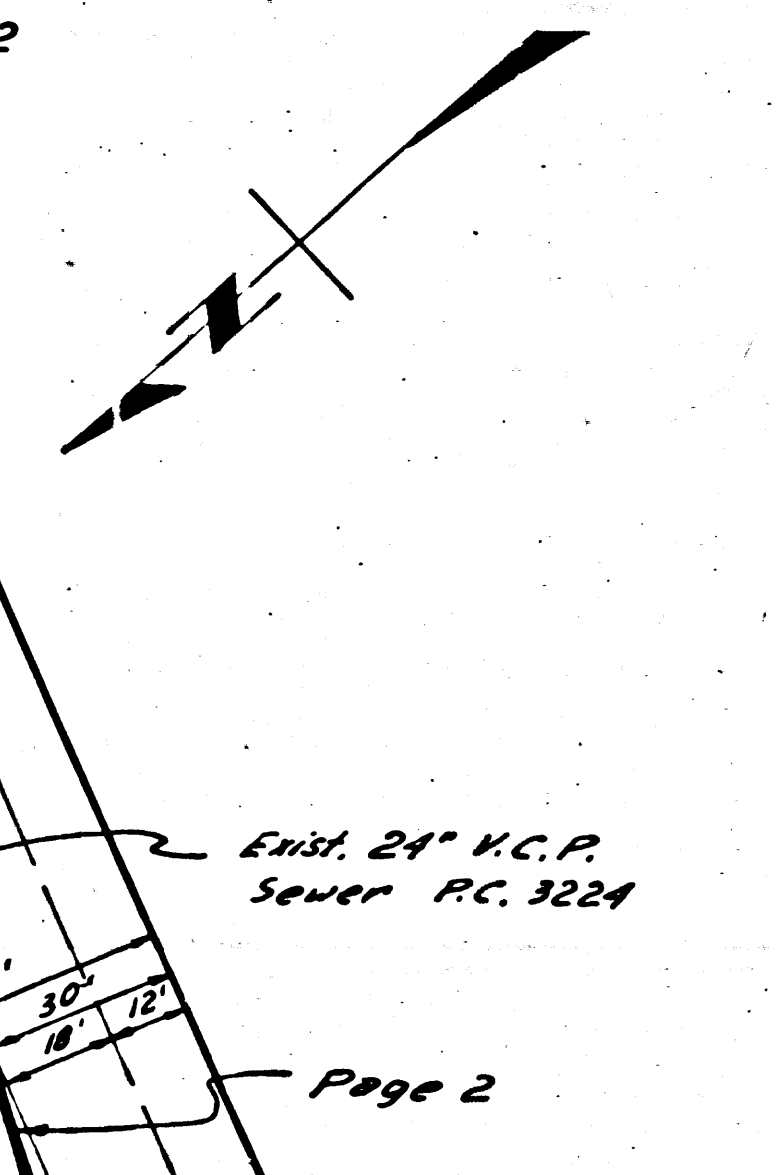
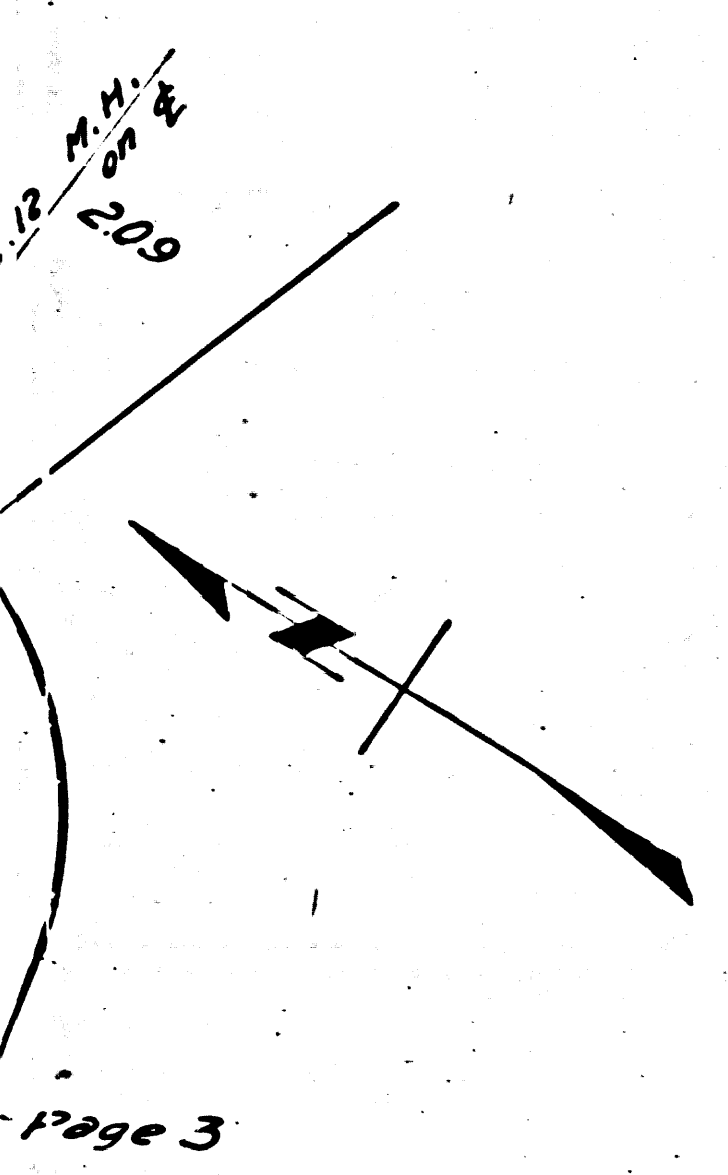
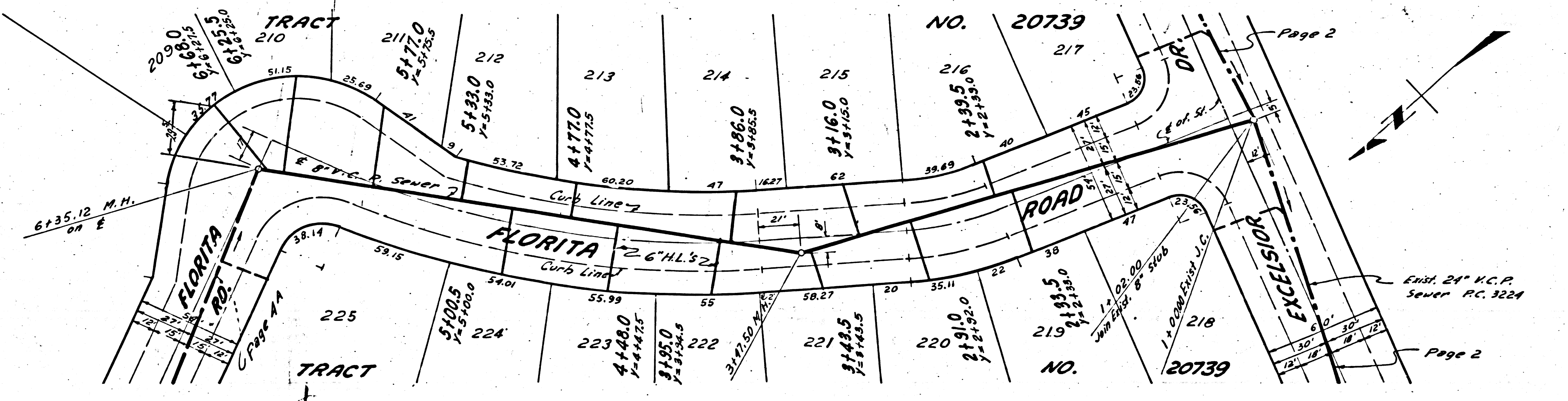
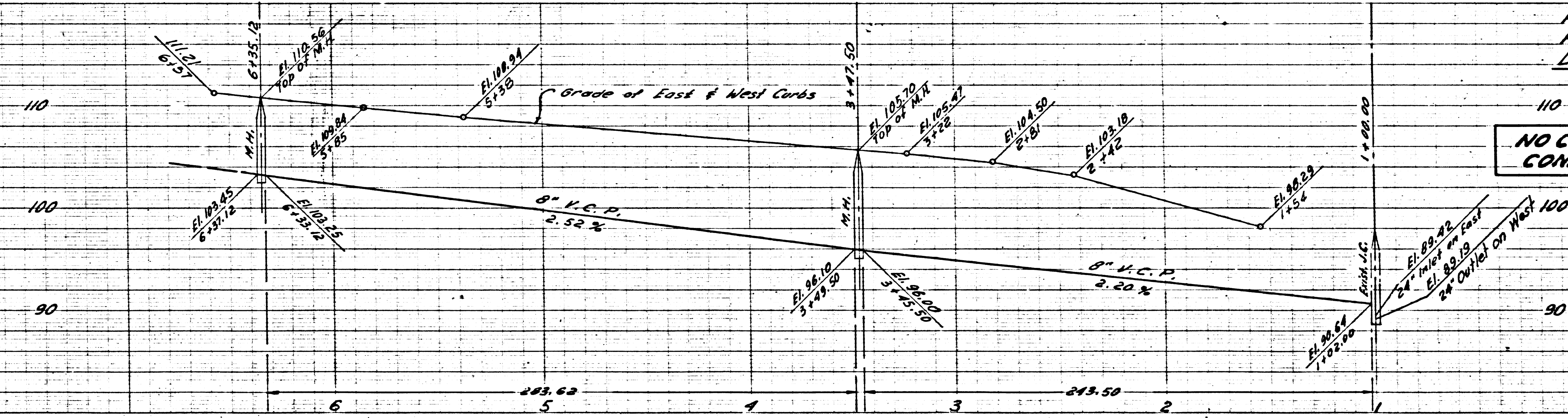
NO CHARGE FOR CONNECTIONS

22,004

P.C. 3471
Page 3
Double Scale

NO CHARGE FOR CONNECTIONS

22,003



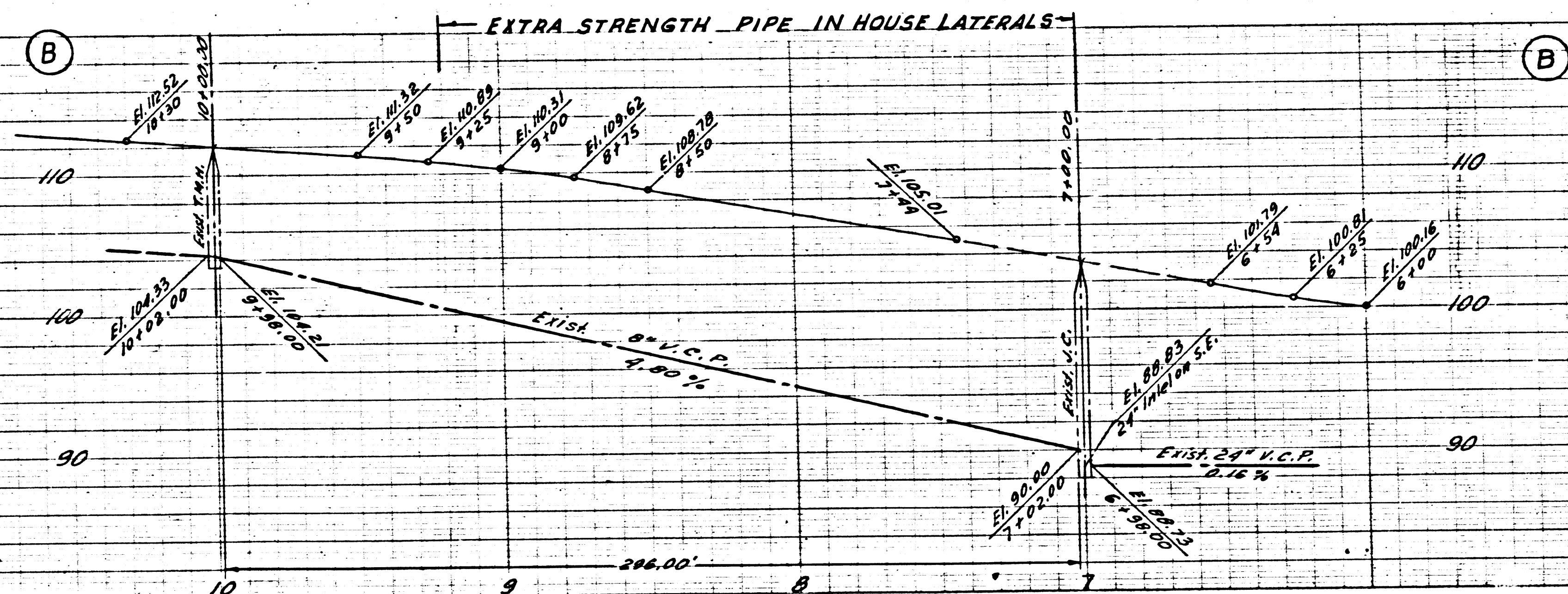
Page 3

Page 2

P.C. 3471
Page 5
Double Scale

NO CHARGE FOR CONNECTIONS

22,005



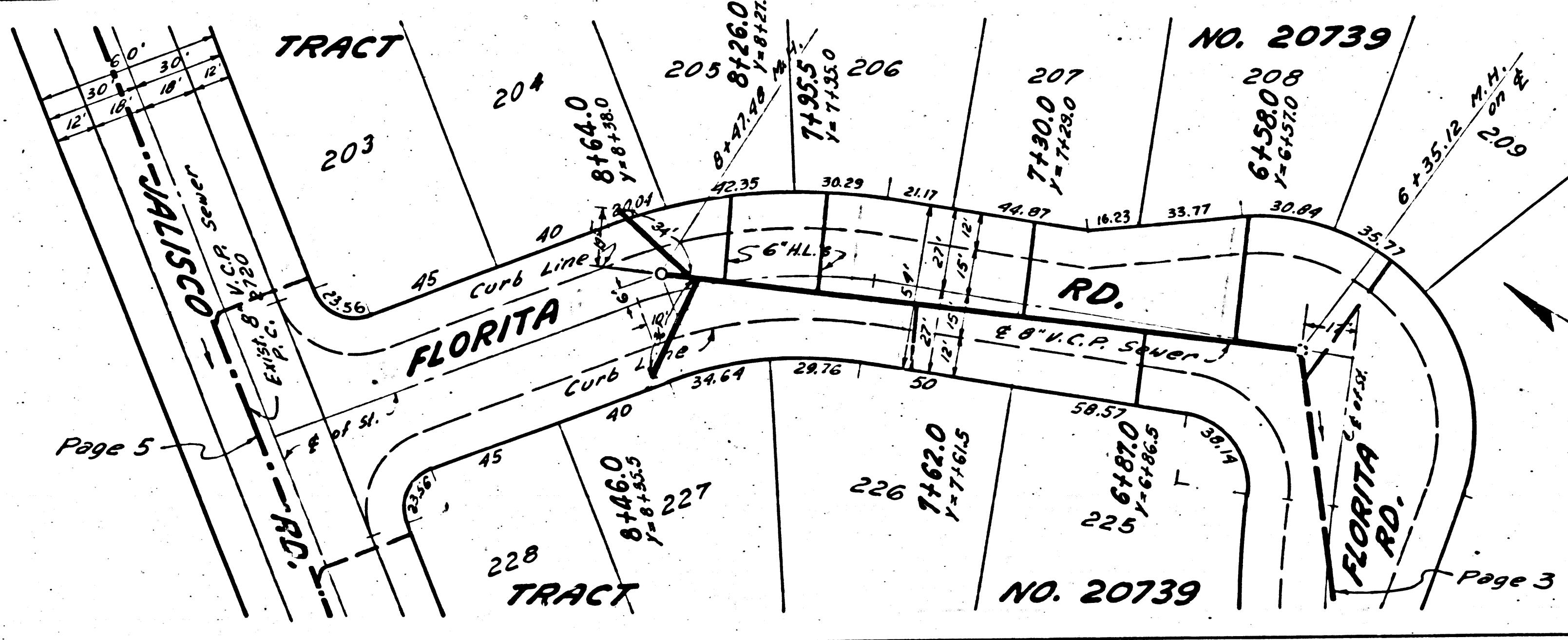
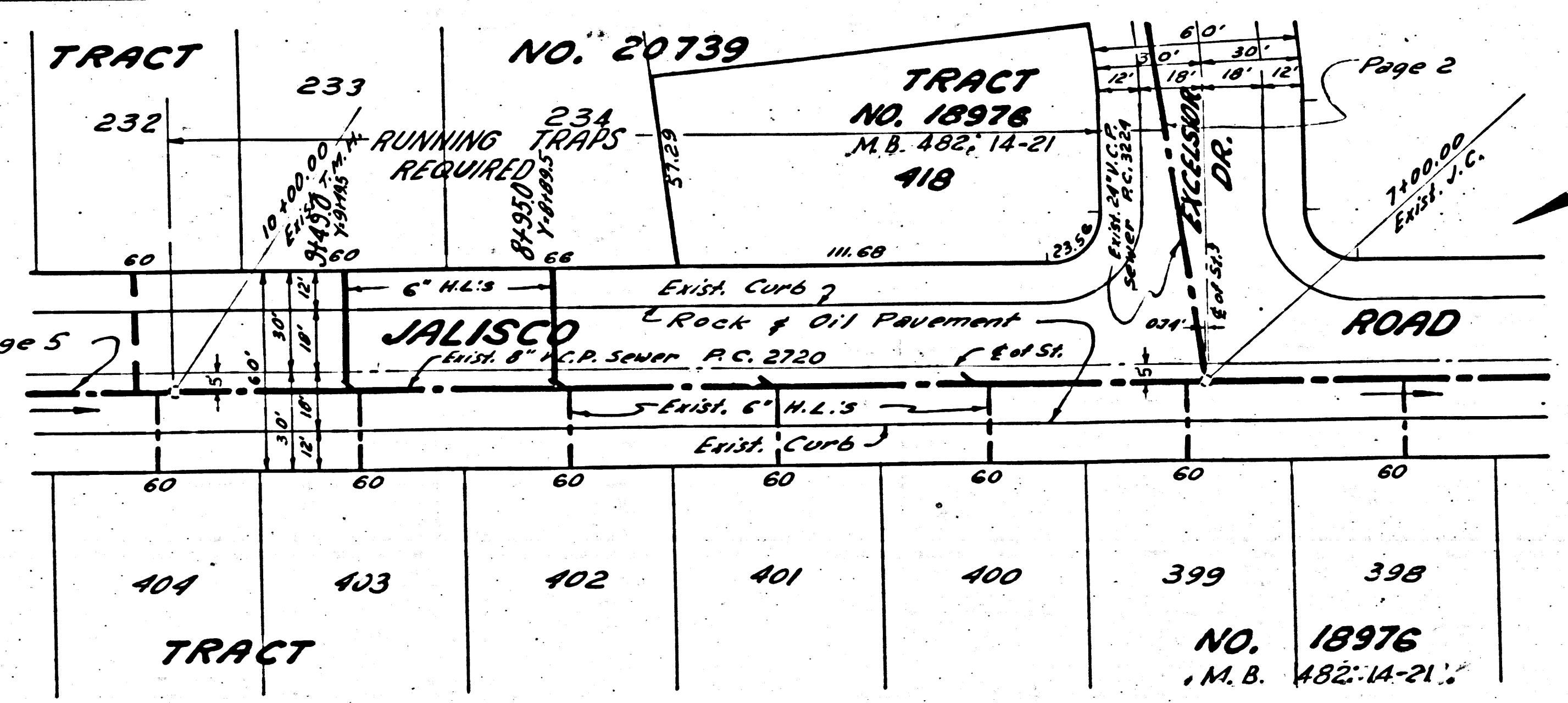
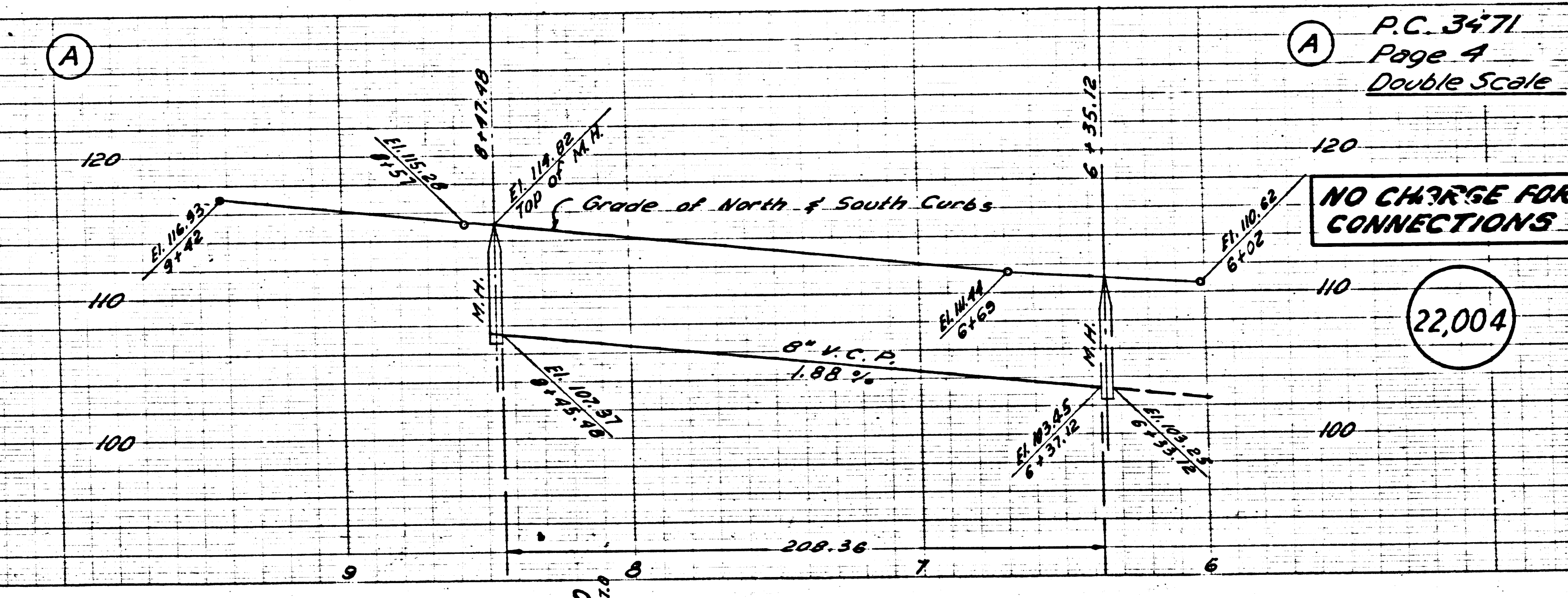
(B)

(A)

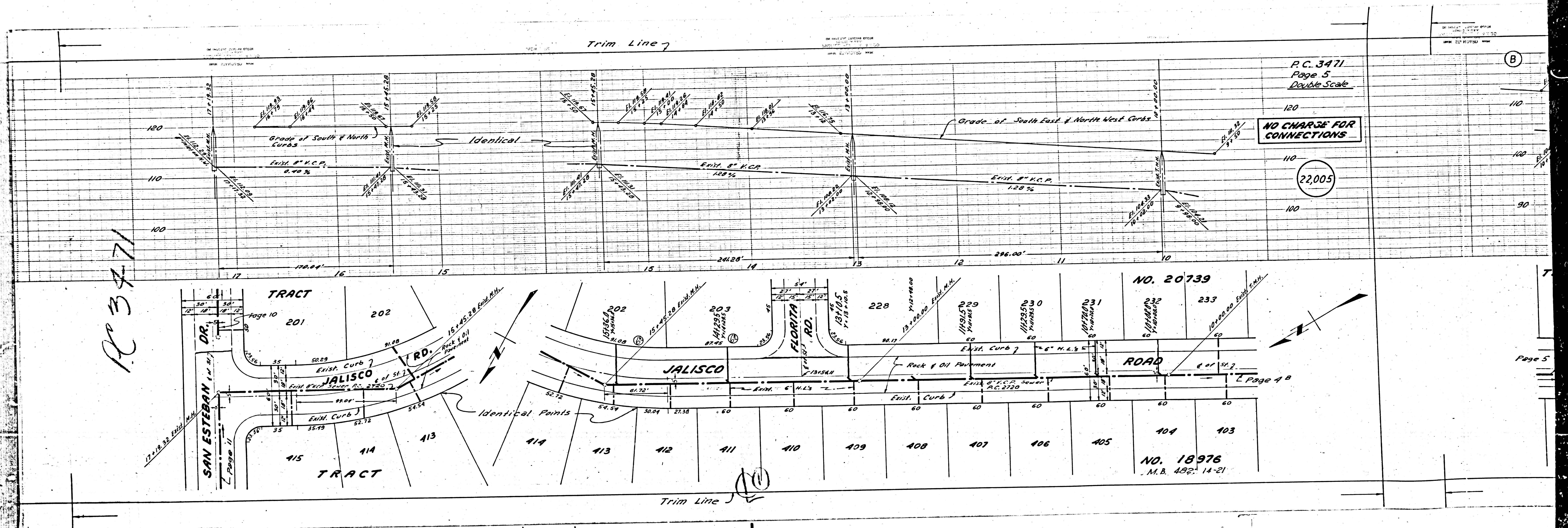
P.C. 3471
Page 4
Double Scale

NO CHARGE FOR CONNECTIONS

22,004



P.C. 3471



P.C. 3471
Page 5
Double Scale

NO CHARGE FOR CONNECTIONS

22,005

NO. 20739

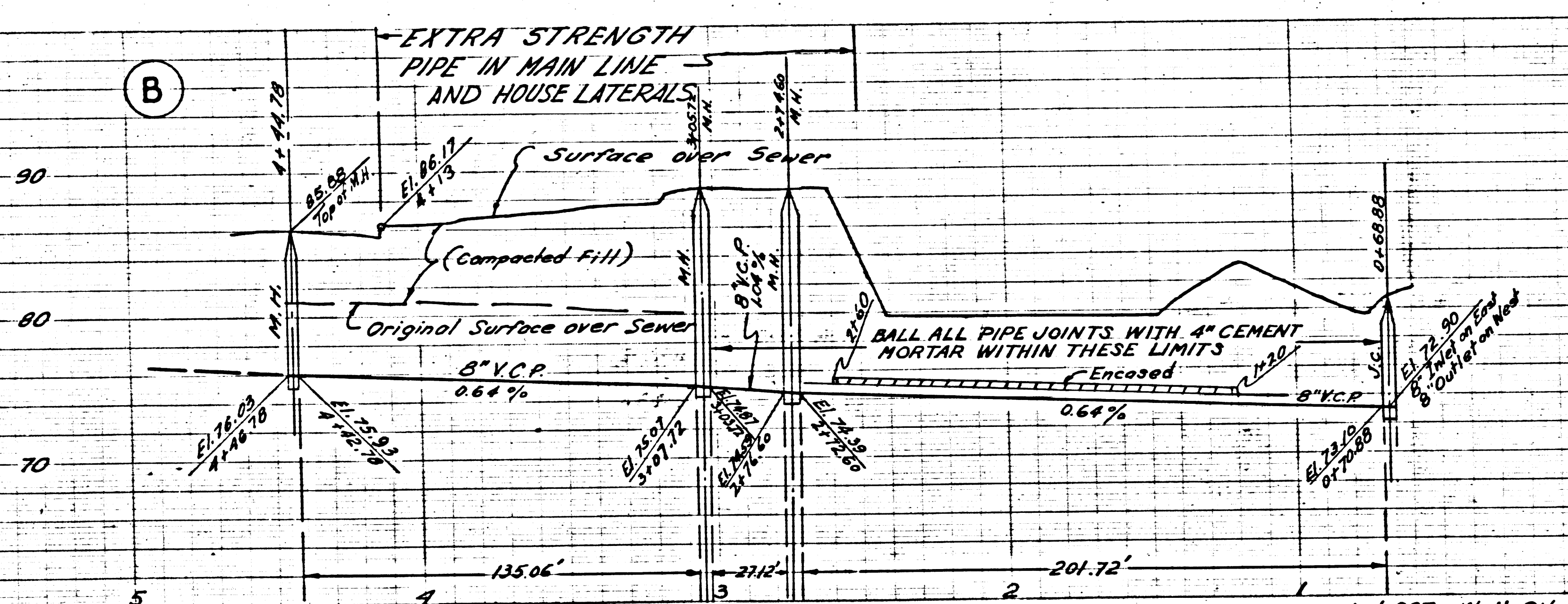
NO. 18976
M.B. 482: 14-21

Page 5

PC. 3471
Page 7
Double Scale

NO CHARGE FOR CONNECTIONS

22,007

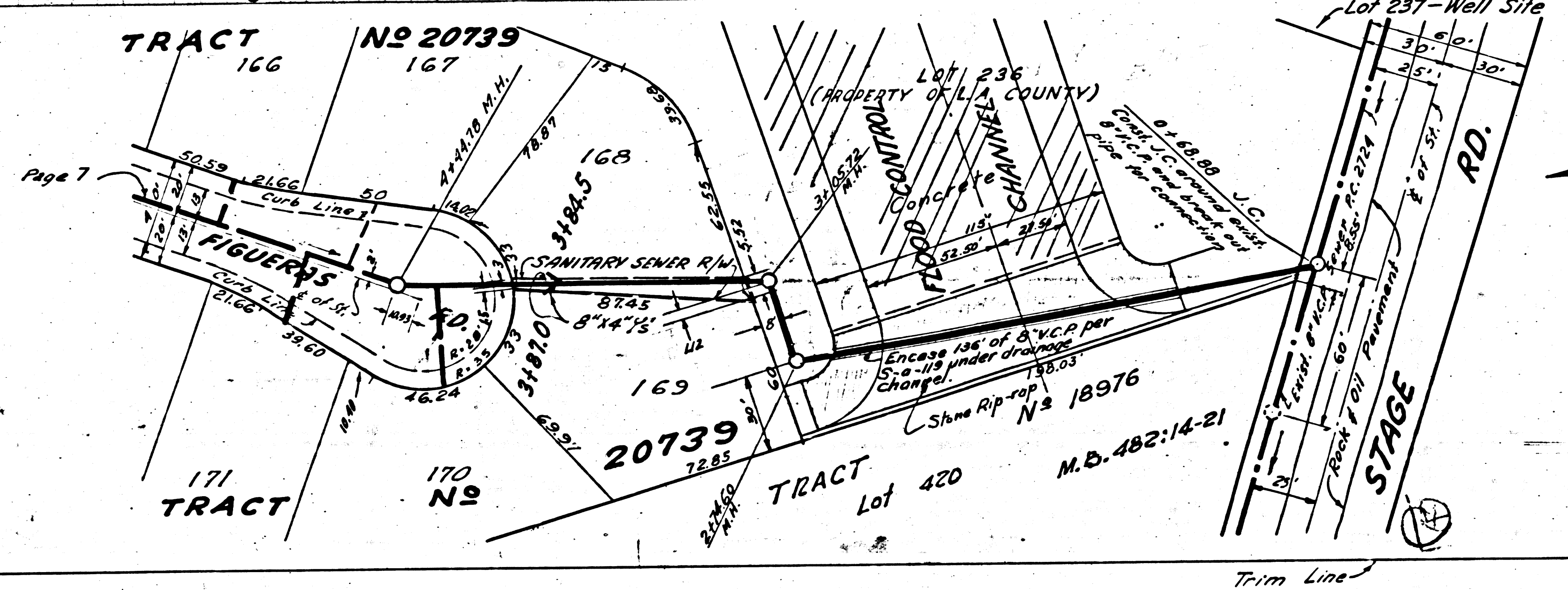
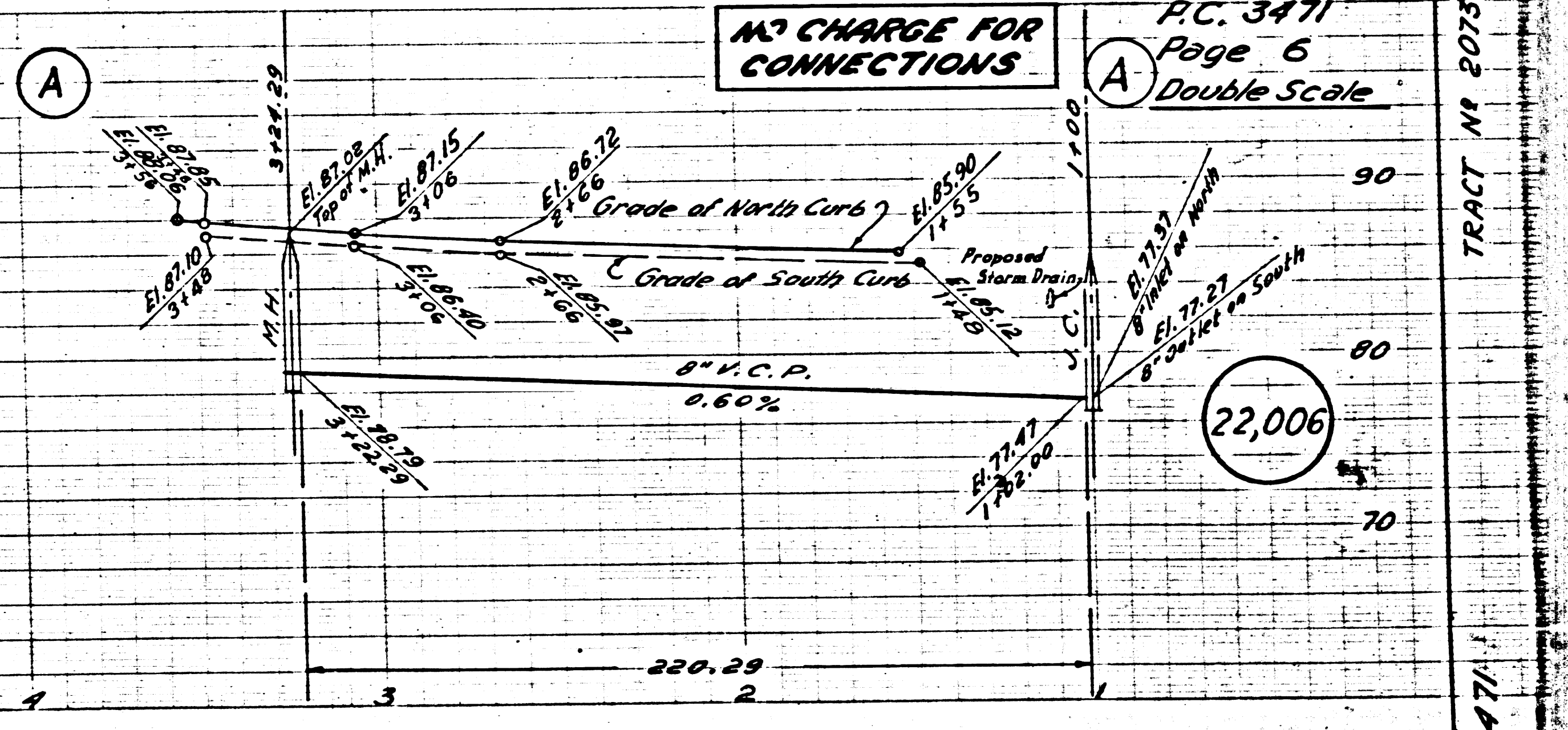


PC. 3471
Page 6
Double Scale

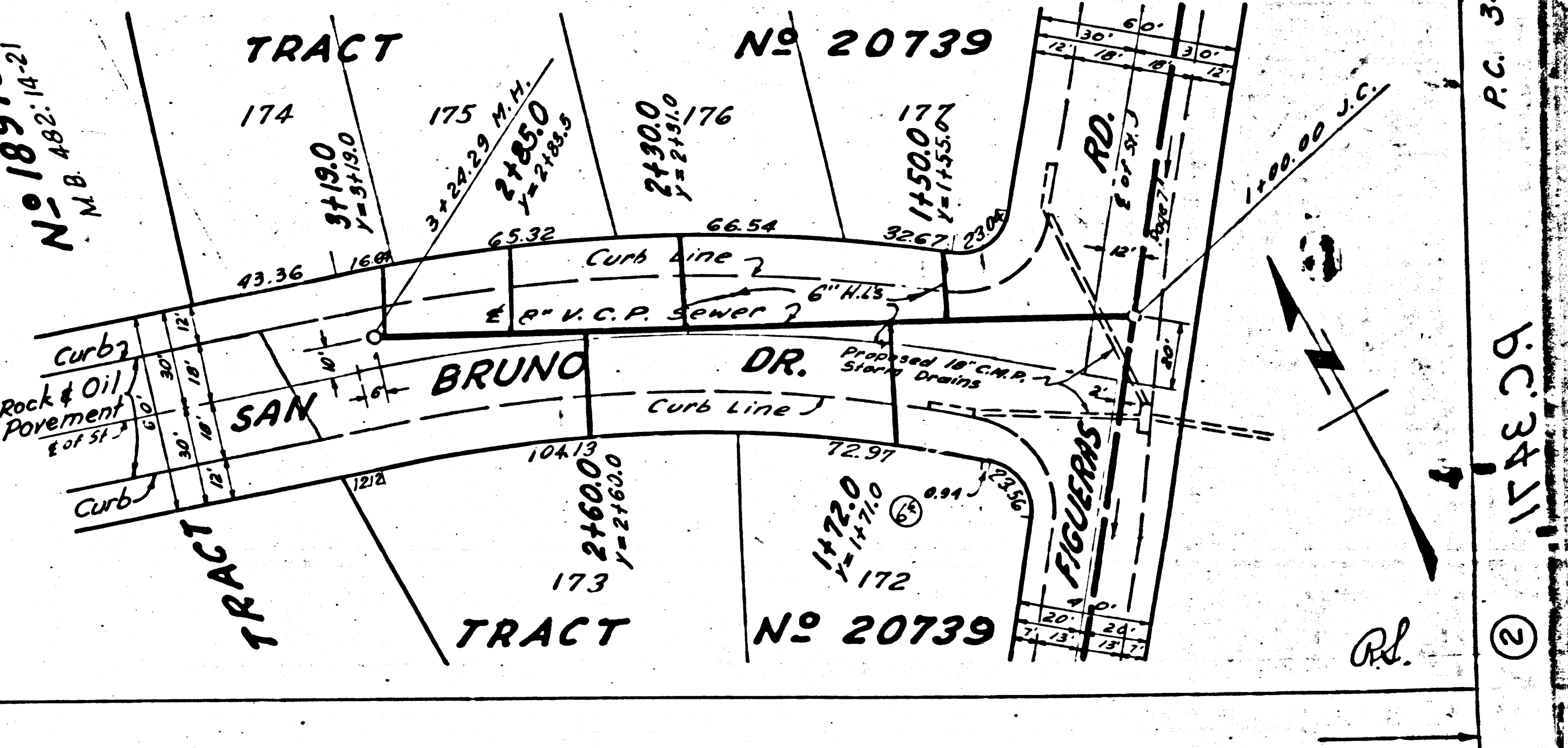
NO CHARGE FOR CONNECTIONS

PC. 3471
Page 6
Double Scale

22,006



REVISION OF FLOOD CONTROL CHANNEL CROSSING
CHECKED BY [Signature]



TRACT No 20739
PC. 3471
17482C

P.C. 3471
Page 8
Double Scale

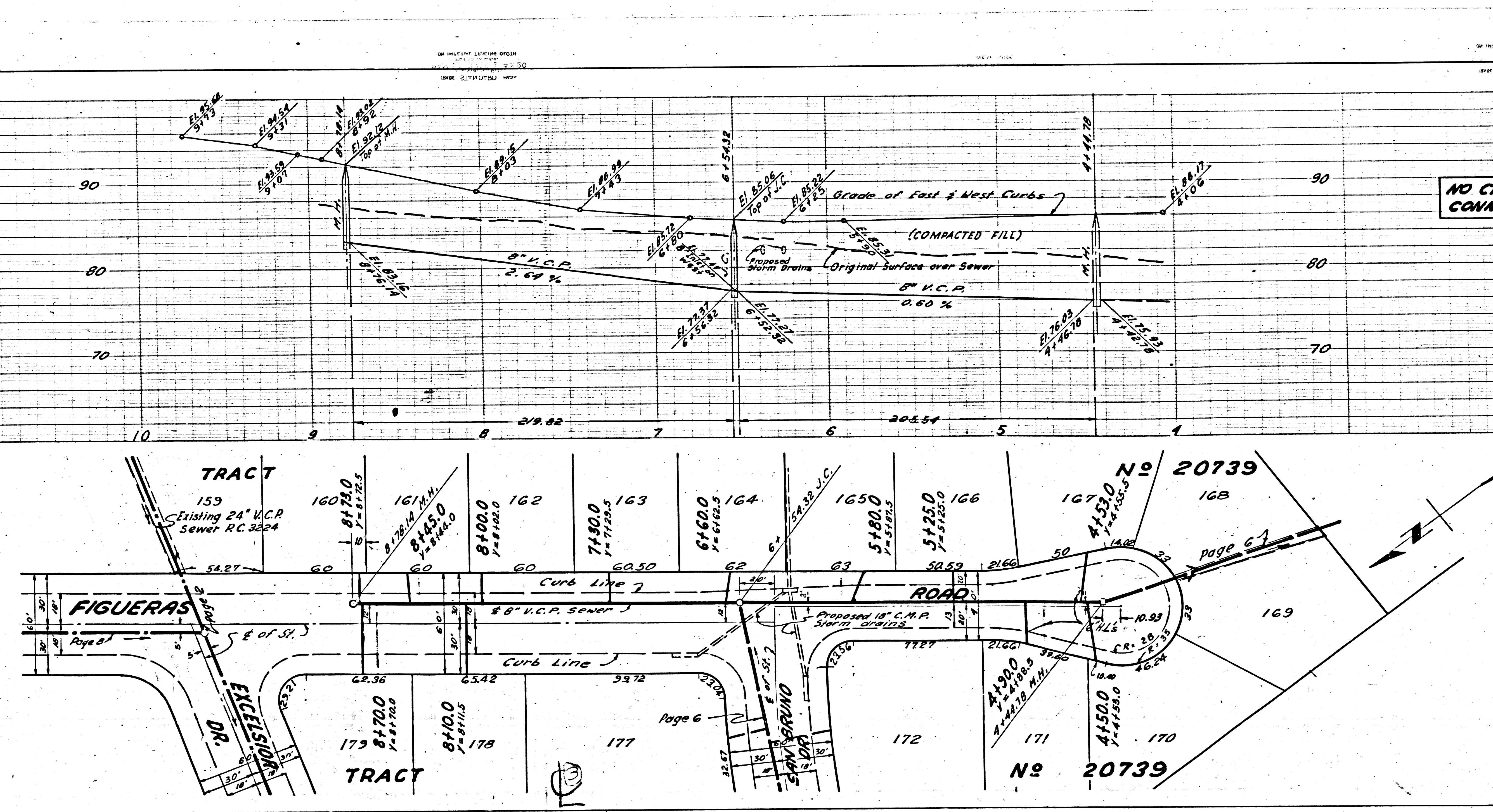
NO CHARGE FOR
CONNECTIONS

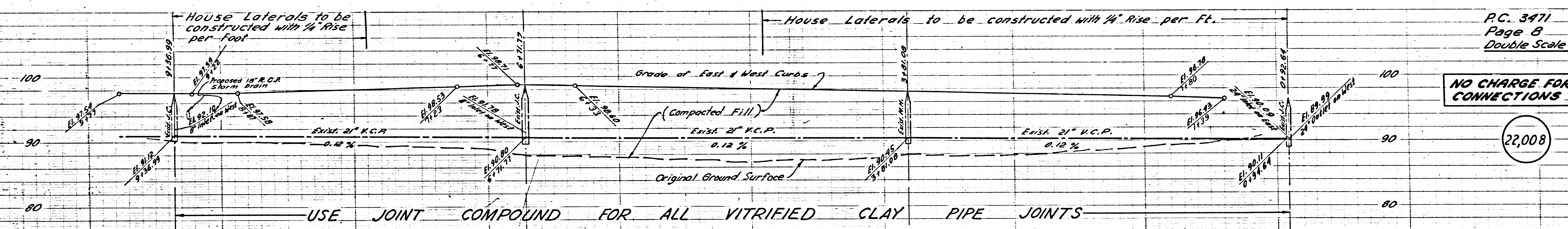
22,008

P.C. 3471
Page 7
Double Scale

NO CHARGE FOR
CONNECTIONS

22,007

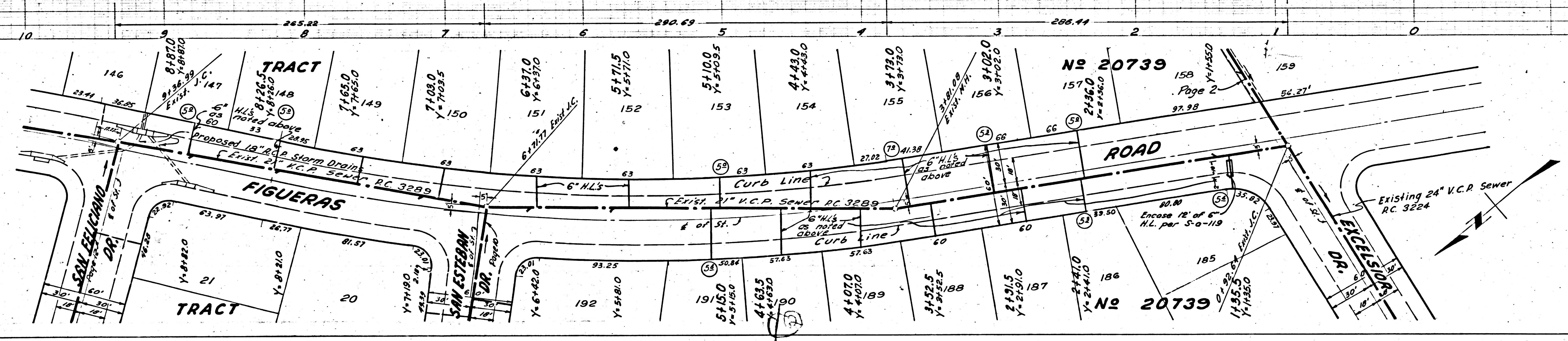




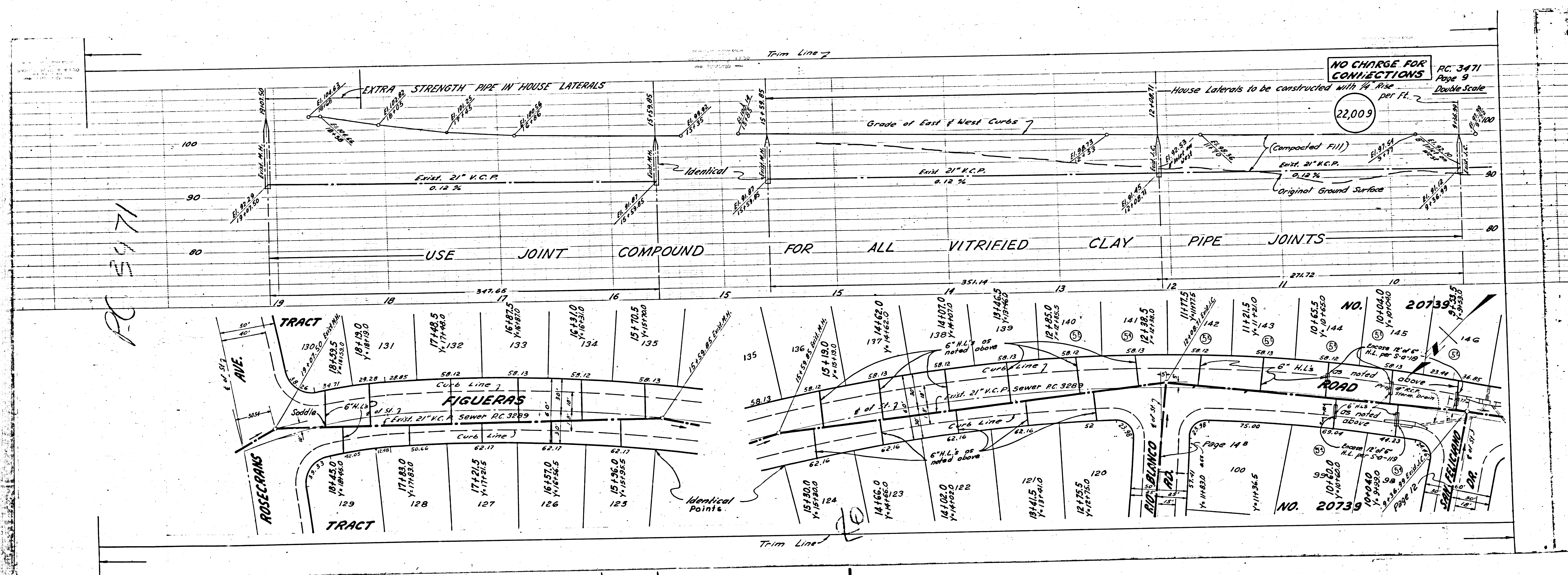
P.C. 3471
Page 8
Double Scale

NO CHARGE FOR CONNECTIONS

22,008



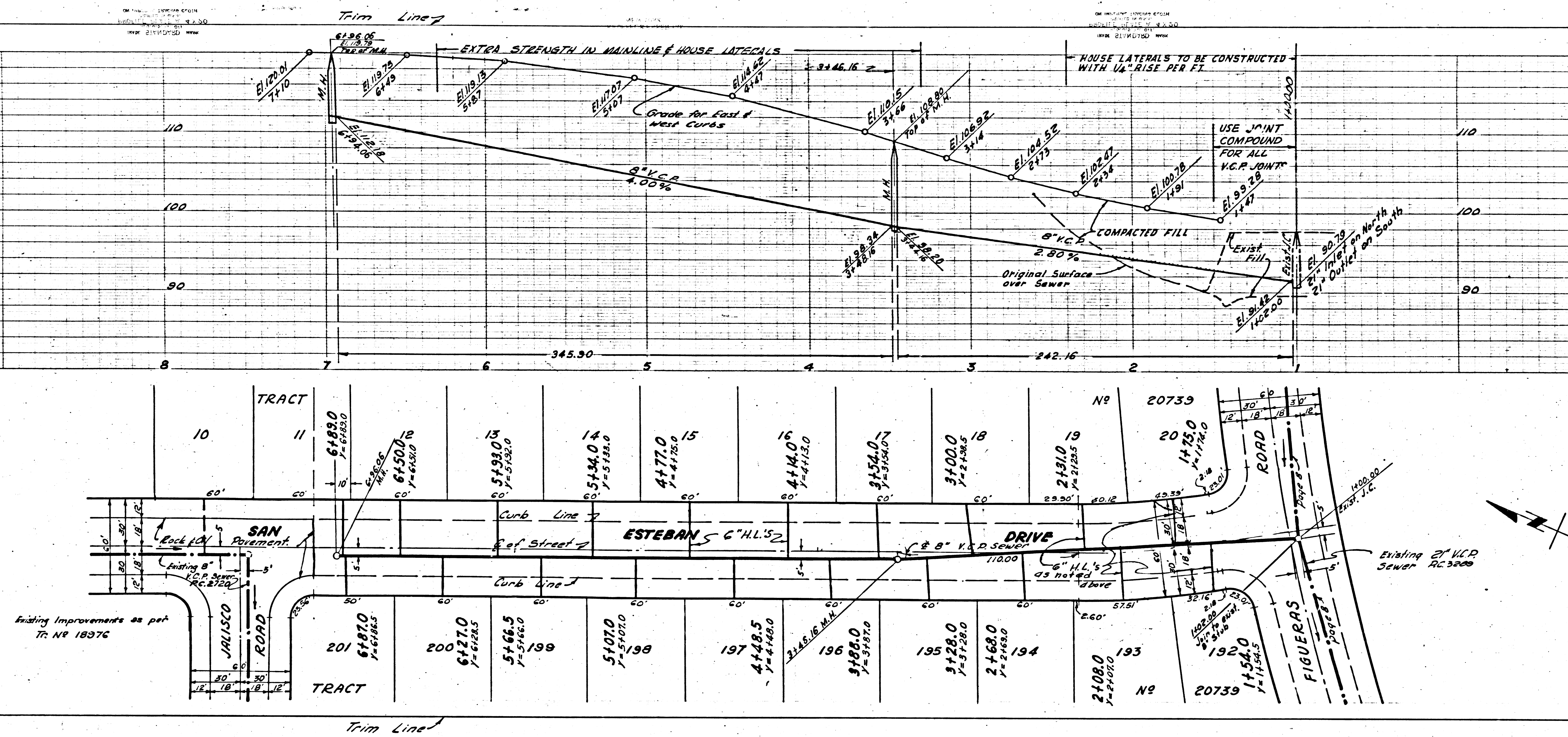
PC 3471



P.C. 3471
Page 11
Double Scale

NO CHARGE FOR CONNECTIONS

2,011



P.C. 3471
Page 10
Double Scale

NO CHARGE FOR CONNECTIONS

22,010

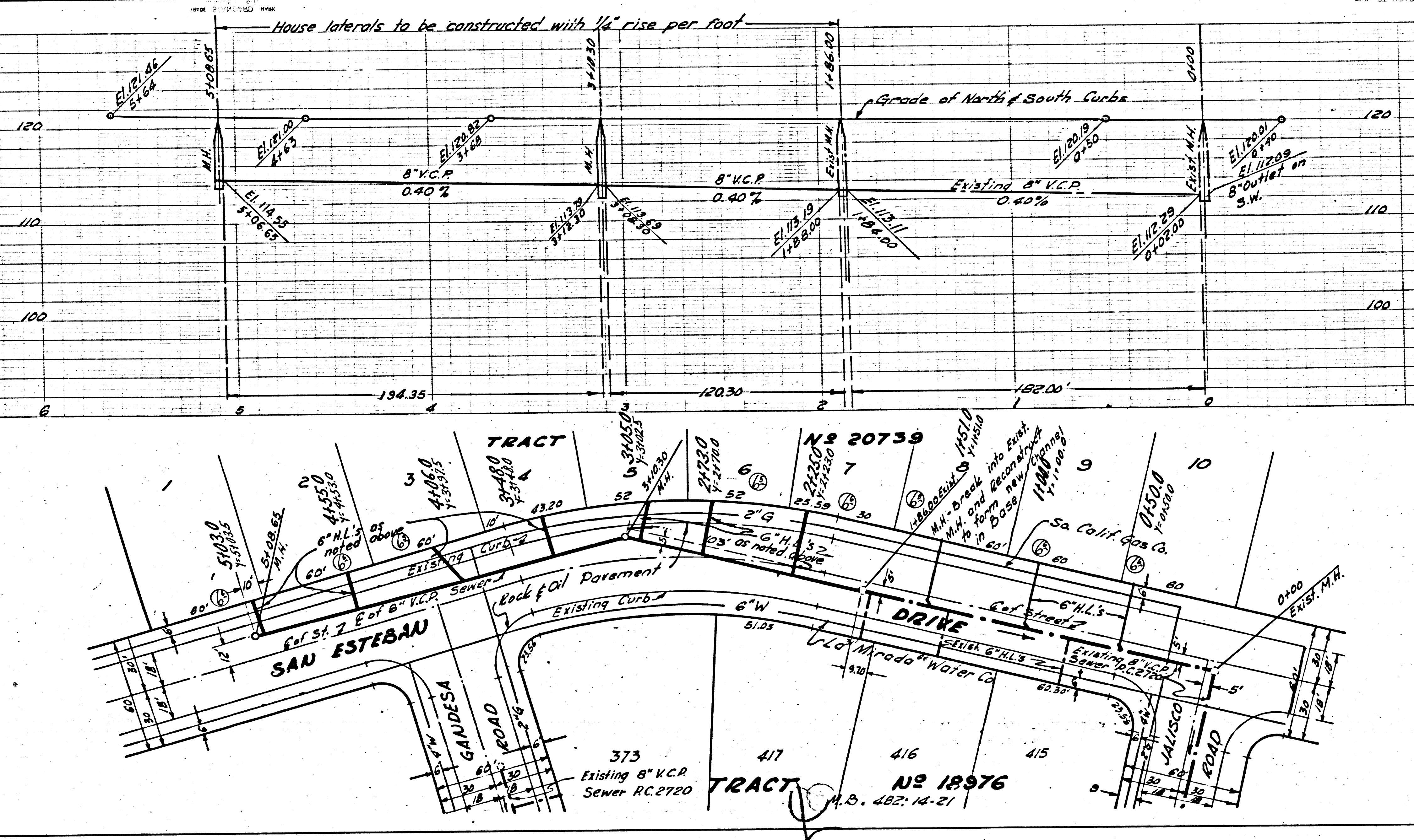
TRACT NO 20739
P.C. 3471
Revised
1-1-05
P.C. 3471
3

171
172

Scale

WORK FOR CONNECTIONS

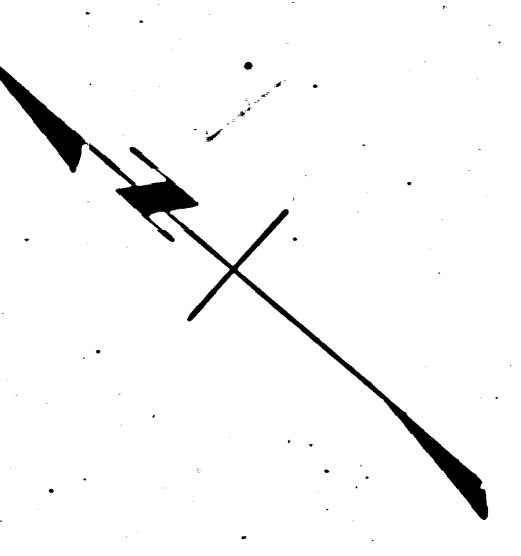
012



P.C. 3471
Page 11
Double Scale

NO CHARGE FOR CONNECTIONS

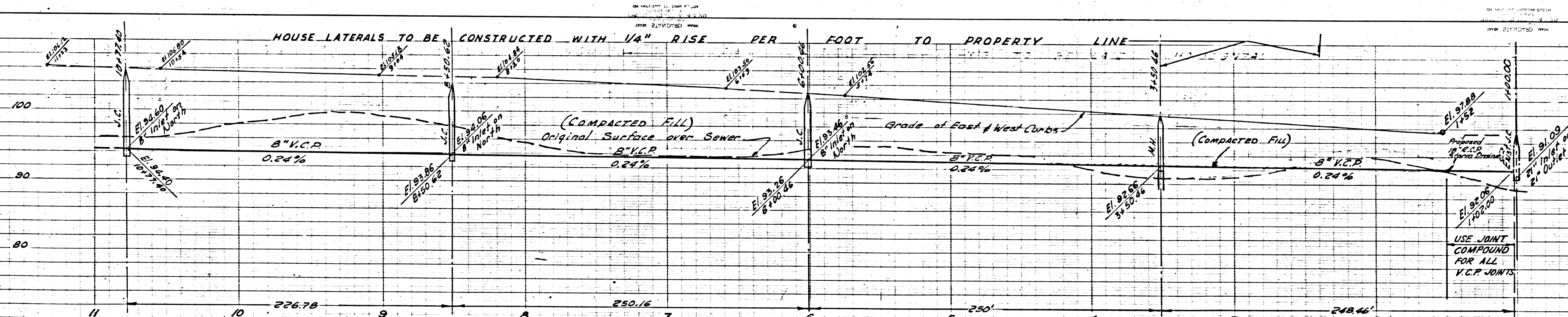
(22,011)



P.C. 3471
Page 13
Double Scale

CHARGE FOR
CONNECTIONS

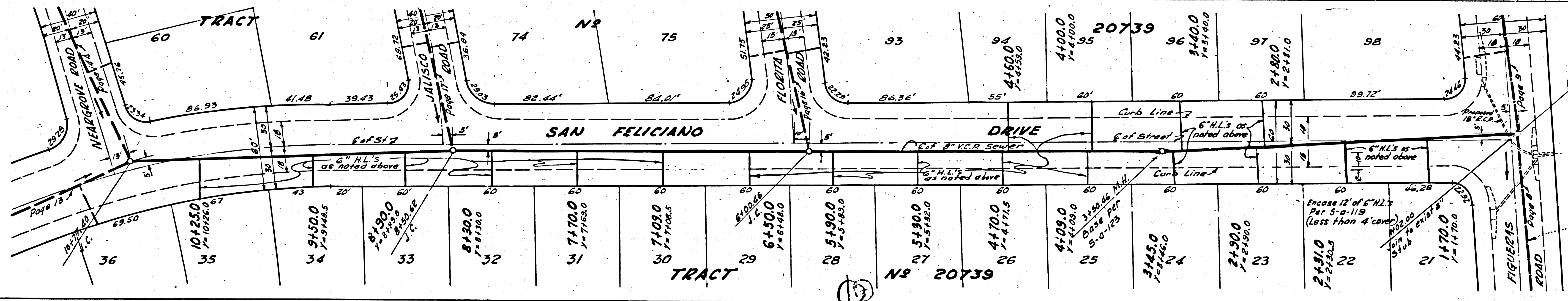
22,013



P.C. 3471
Page 12
Double Scale

NO CHARGE FOR
CONNECTIONS

22,012



P.C. 3471
Page 15
Double Scale

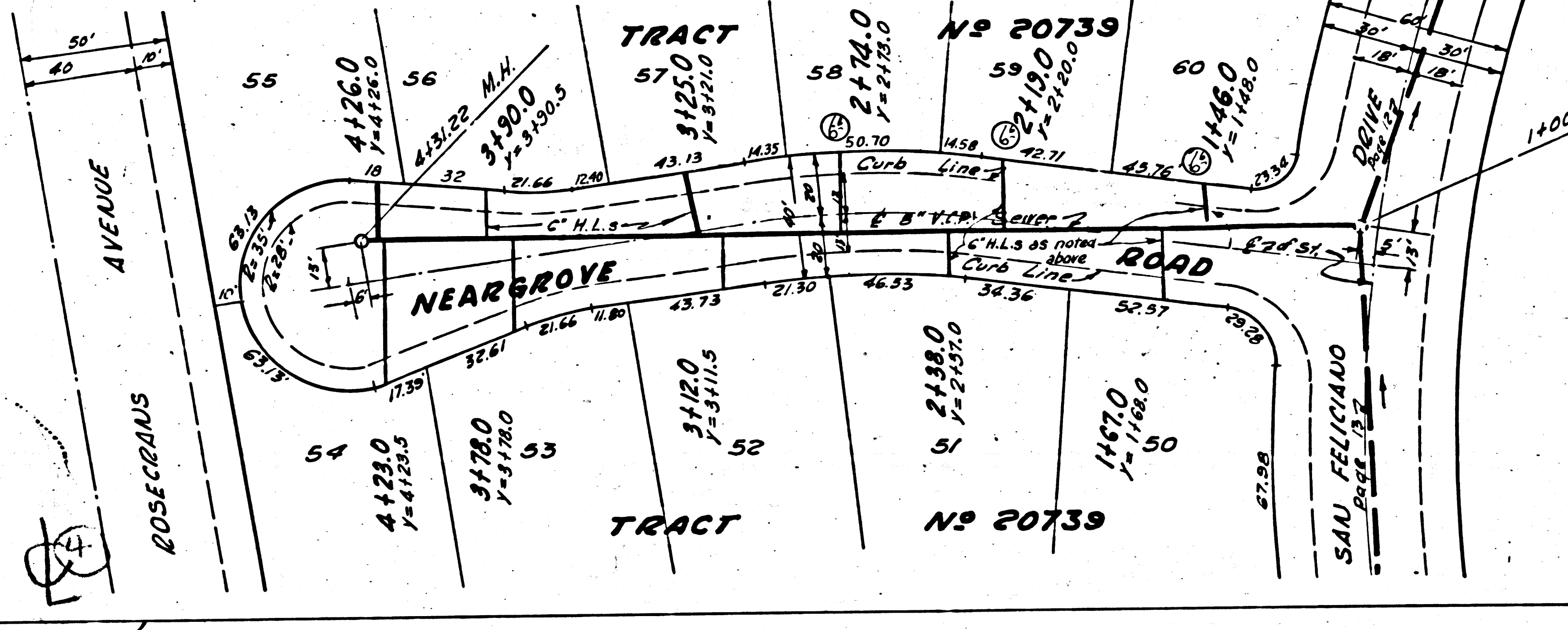
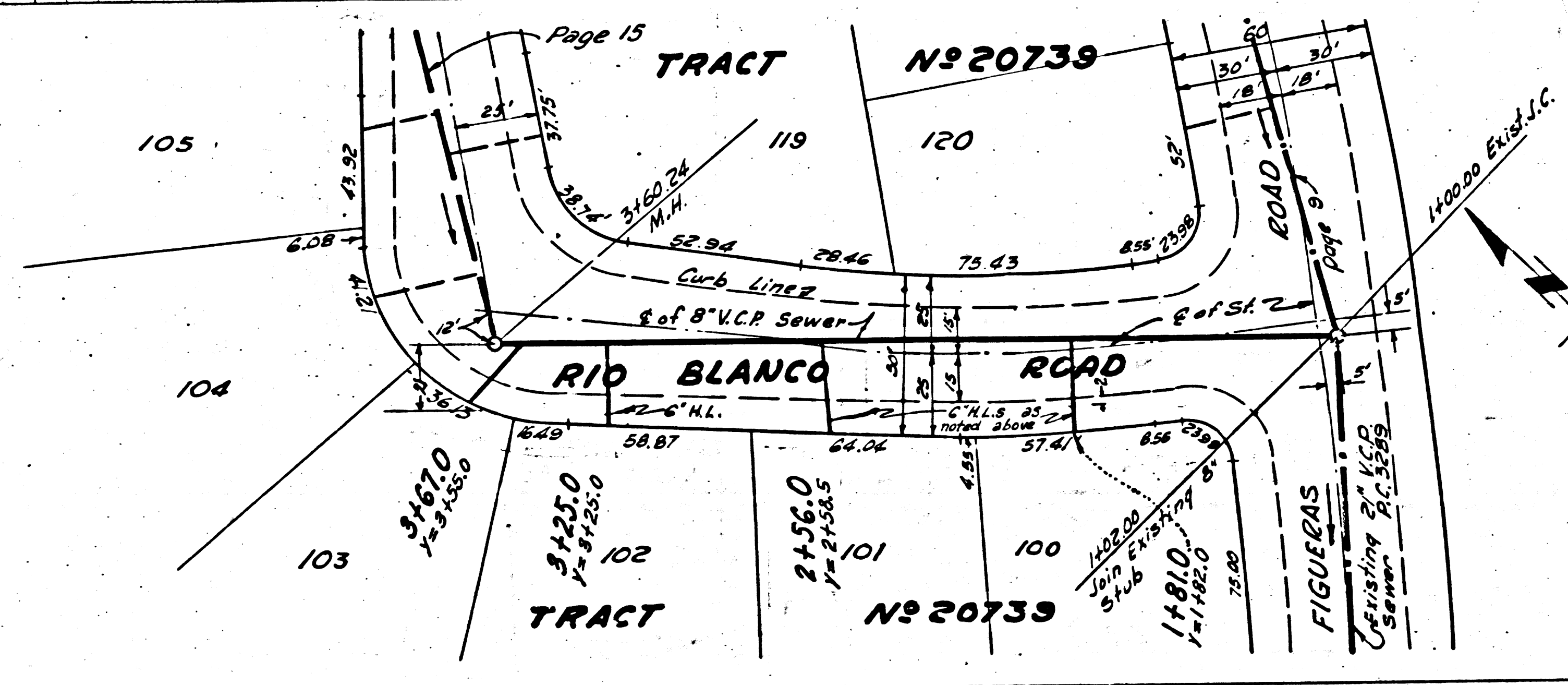
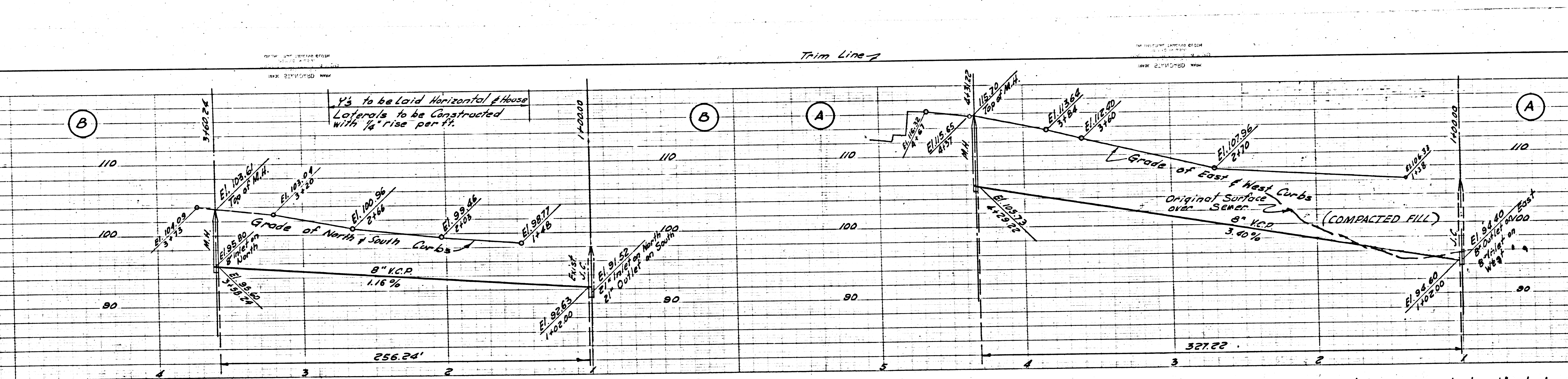
NO CHARGE FOR
CONNECTIONS

22,015

P.C. 3471
Page 14
Double Scale

NO CHARGE FOR
CONNECTIONS

22,014



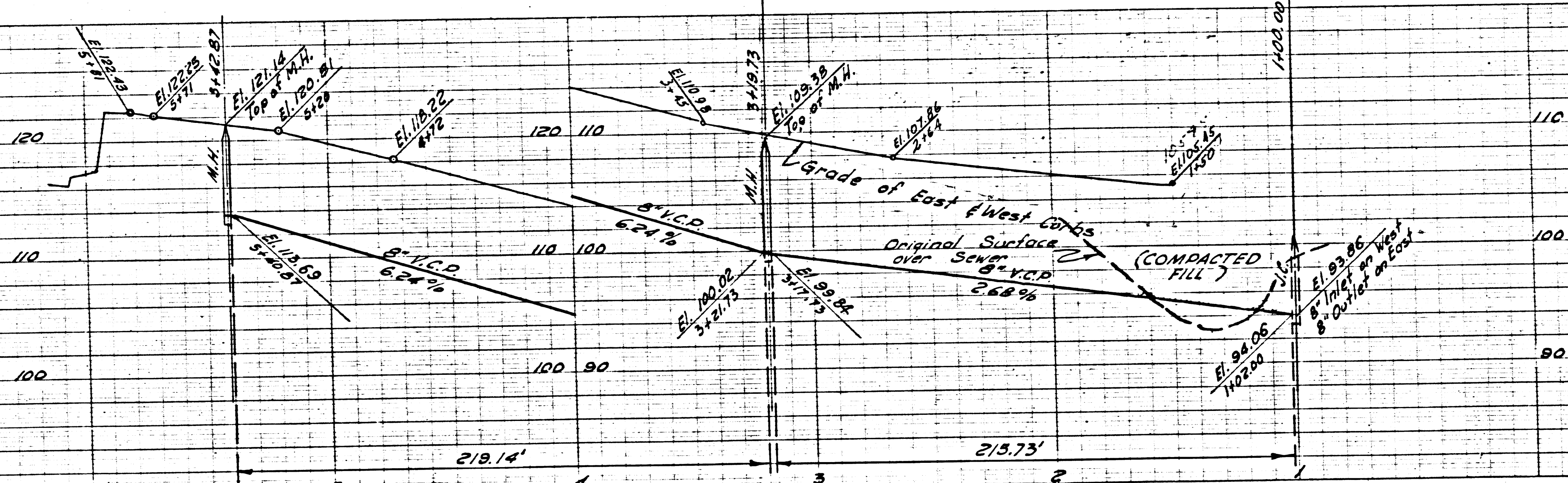
TRACT NO. 20739

P.C. 3471

1745.C

Rd.

Trim Line

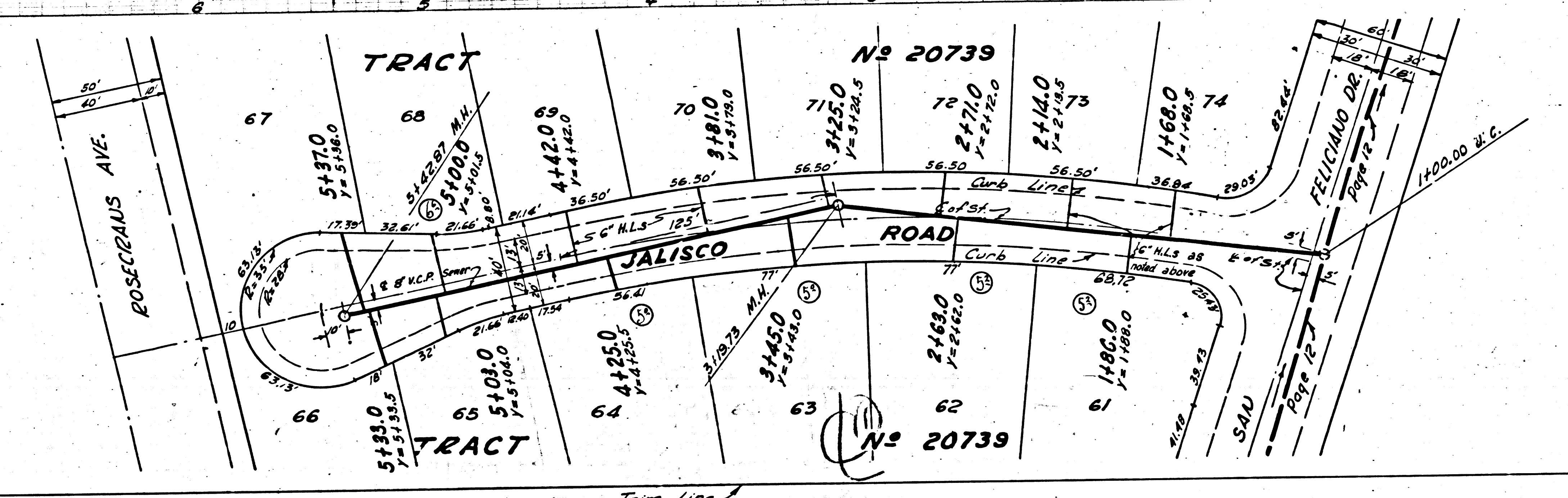


PC 3471
Page 17
Double Scale

NO CHARGE FOR CONNECTIONS

22,017

PC 3471



Trim Line