

P.C. 3481

PAGE 2

22024

NO CHARGE FOR CONNECTIONS

B.M. 11, ELEV. 1088.70, RD DEPT. E.B. LX 204-1
Lincoln Ave & Altadena St, N.W. cor.
Chis. II. A.M. of B.C.R.

ALTADENA BLDG. DIST. NO. 3

- NOTE: PROVIDE STAKES ON THE PROPERTY LINES OR PROPERTY LINES PRODUCED AT RIGHT ANGLES TO THE SEWER LINE BY THE CENTER LINE OF EACH MANHOLE. NO REPRESENTATIVE OF THE COUNTY ENGINEER WILL SURVEY OR LAY OUT ANY PORTION OF THIS WORK. THE OWNER OR HIS AUTHORIZED REPRESENTATIVE SHALL FURNISH THE COUNTY ENGINEER WITH GRADE SHEETS AND STATIONS FOR ALL HOLES, LATERALS AND Y-BRANCHES AND SHALL PROVIDE STAKES FOR THEM AT THEIR PROPER LOCATIONS WITH STATIONING PLAINLY MARKED. NO REVISION SHALL BE MADE IN THE PLANS WITHOUT APPROVAL OF THE COUNTY ENGINEER.
1. USE STANDARD MANHOLE FRAMES AND COVERS, S-B-117, EXCEPT AS NOTED.
 2. USE STANDARD STRENGTH PIPE, EXCEPT AS NOTED.
 3. USE CEMENT MORTAR FOR ALL VERTICAL CLIM PIPE JOINTS.
 4. RESURFACE ALL TRENCHES WITHIN PAVED AREAS TO MEET L.A. COUNTY ROAD DEPT. OR CALIF. STATE HWY. DEPT. REQUIREMENTS - IN ACCORDANCE WITH PERMIT.
 5. ENCASE FOUR FEET OF SEWER AT POINTS OF INTERFERENCE WITH POLES, S-B-119.
 6. HOUSE LATERALS TO BE CONSTRUCTED WITH INVERTS AT PROPERTY LINE 4 FEET BELOW CURB GRADE, EXCEPT AS NOTED.
 7. ALL STRUCTURES SHALL BE DARK SEWER STRUCTURES, S-B-104, EXCEPT AS NOTED.
 8. FOR MINUTABLE LEAKAGE TEST, USE FORMULA NO. 1, SPECS. SEC. 51.
 9. MANHOLE TOPS IN UNIMPROVED RIGHTS-OF-WAY TO BE 6" ABOVE FINISHED GRADE.

PROFILE, ALIGNMENT, AND GRADE OF SANITARY SEWERS TO BE CONSTRUCTED IN

TRACT NO 17964

P.C. 3481

PAGE 1

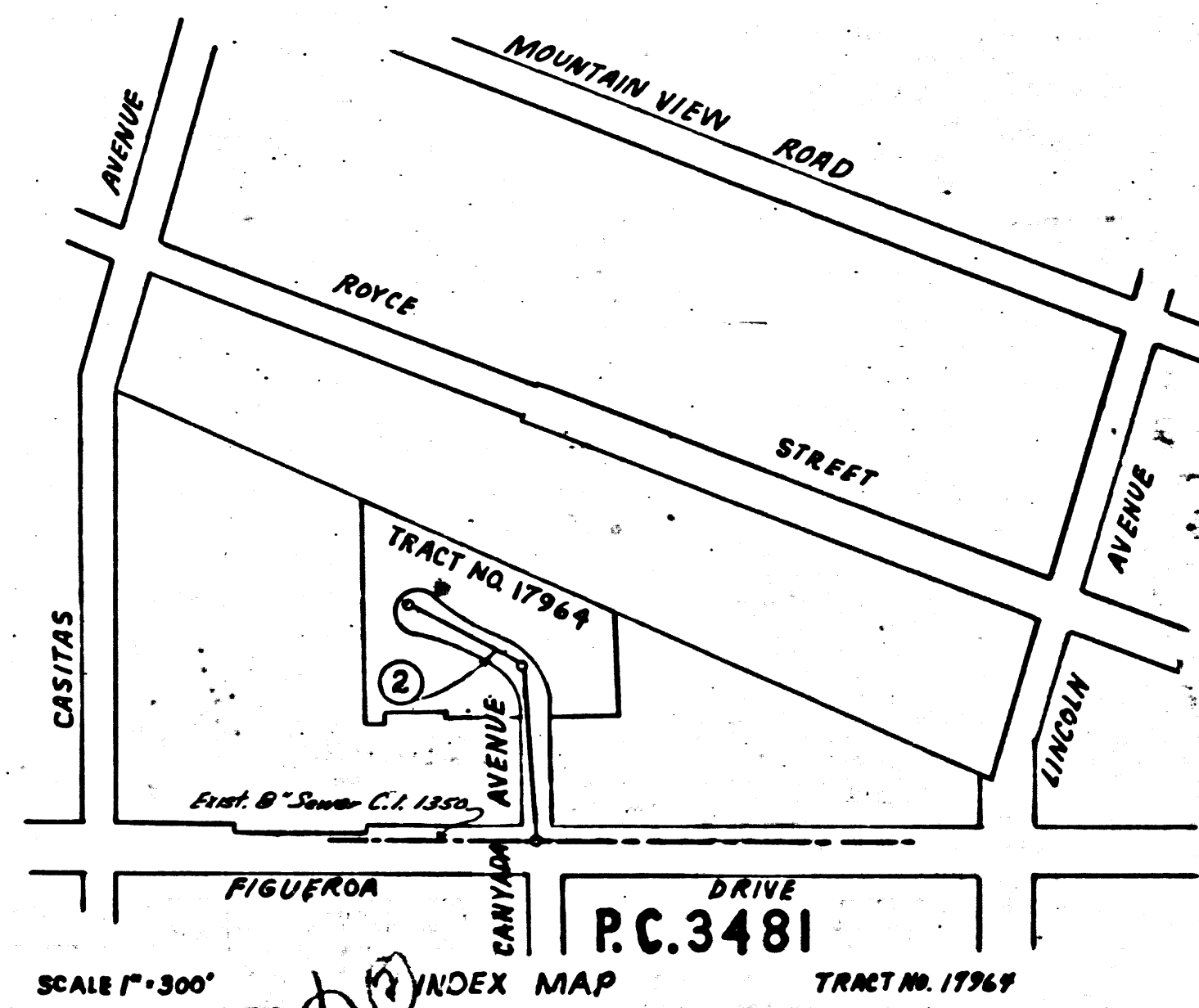
22023

PRIVATE CONTRACT NO 3481
W.B. (50)

SCALE: VERT. 1"=4'
HORIZ. 1"=40'
DATE: APRIL 1955
PREPARED IN THE OFFICES OF
FRANK C.L. HOLZ, LICENSED SURVEYOR
BY *Wm. J. Fox* P.E. 2041
FOR LEGEND SEE PLAN NO S-a-64

SHEET	PAGES
1	1-2

NO CHARGE FOR CONNECTIONS
L. Curtis 9-22-53



NOTE: GRADES TO WHICH THIS IMPROVEMENT IS TO BE CONSTRUCTED ARE SHOWN ON PLANS AND PROFILES. GRADE POINTS FOR TOP OF CURBS, CENTER LINE OF STREET, OR CENTER LINE OF ALLEY, ARE SHOWN BY CIRCLES ON PROFILE. AT ALL POINTS BETWEEN DESIGNATED POINTS THE GRADE SHALL BE ESTABLISHED SO AS TO CONFORM TO A STRAIGHT LINE DRAWN BETWEEN SAID DESIGNATED POINTS. ELEVATIONS ARE IN FEET, ABOVE U.S.C. DATUM OR HIGH SEA LEVEL. THIS DRAWING AND THE DATA HEREON ARE HEREBY MADE A PART OF THE SPECIFICATIONS. WORK SHALL BE CONSTRUCTED ACCORDING TO SPECIFICATIONS ON FILE IN THE OFFICE OF THE COUNTY ENGINEER AND SHALL BE PROSECUTED ONLY IN THE PRESENCE OF THE COUNTY ENGINEER.

BEFORE WORK CAN BE STARTED, THE CONTRACTOR MUST OBTAIN A PERMIT TO EXCAVATE IN COUNTY STREETS FROM THE L.A. COUNTY ROAD DEPT., 100 W. 2nd STREET AND MAKE A DEPOSIT WITH THE COUNTY ENGINEER, ROOM 502, 200 S. BROADWAY, SUFFICIENT TO COVER THE COST OF CONSTRUCTION INSPECTION AND REPAIR PLANS.

APPROVAL OF THIS PLAN BY THE COUNTY OF LOS ANGELES DOES NOT CONSTITUTE A REPRESENTATION AS TO THE ACCURACY OF THE LOCATION OF, OR THE EXISTENCE OR NON-EXISTENCE OF, ANY UNDERGROUND UTILITY, PIPE, OR STRUCTURE WITHIN THE LIMITS OF THIS PROJECT. (THIS NOTE APPLIES TO ALL SHEETS.)

IF WORK IS TO BE DONE IN A STATE HIGHWAY, A PERMIT MUST BE OBTAINED FROM THE STATE DEPT. OF HIGHWAYS, 120 S.D. SPRING STREET.

COUNTY OF LOS ANGELES, CALIFORNIA
 APPROVED, WILLIAM J. FOX, COUNTY ENGINEER
 BY *Wm. J. Fox*
 SANITATION ENGINEER
 CHECKED BY *W. J. Fox*
 OFFICE OF COUNTY ENGINEER, REC. C.E. NO. 3406

APPROVED, A.M. RAWN
 CHIEF ENGR. CO. ENR. DIST. NO. 17
 BY *A.M. Rawn*
 OFFICE ENGINEER
 REC. C.E. NO. 3406

checked 1-4-56 M. L. ...

TRACT NO. 17964

P.C. 3481

1845.C.C.

