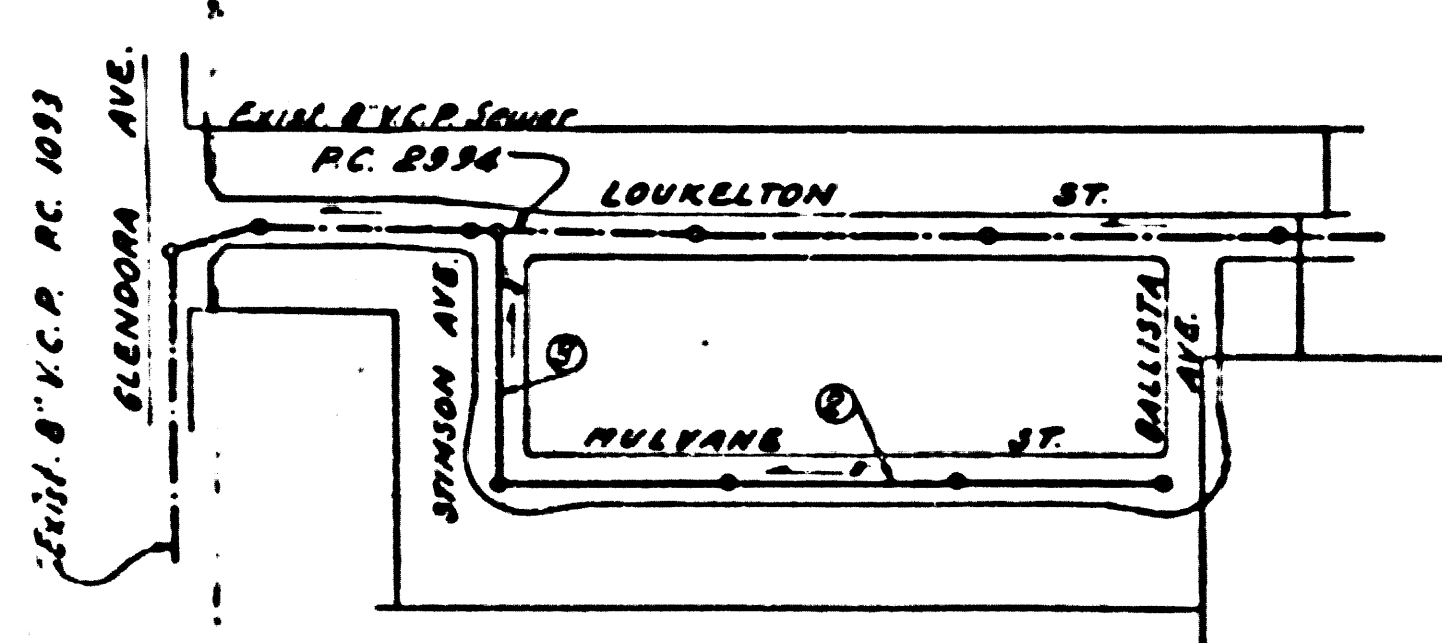


NO CHARGE FOR CONNECTIONS

21,175



INDEX MAP
SCALE: 1"=300' TRACT No. 21198
P.C. 3492

checked 8-25-55 *W. Hansen*

B.M. 36.1107 L & T. in Northwest of
ELLIOT AVE. 152' W. OF CURB RETURN OF
N.W. COR. OF CADWELL ST. & ELLIOT AVE.
ELEV. 324.228

NOTE: Subtract 0.08 from Elevations
used on this Plan to equal to B.M. 36.1107

NOTE:
LOTS 1-THRU 20
63-THRU 70
SERVED BY RC 2934

SHEET NO.	PAGES
1	1-3

NO CHARGE FOR CONNECTIONS
L. Curtis 6-15-55

Trim Line
PUEENTE BLDG. DIST. No 2

- NOTE: Provide stakes on the property lines or property lines produced at right angles to the sewer line at the center line of each manhole.
- No representative of the County Engineer will survey or layout any portion of the work.
- The owner or his authorized representative shall furnish the County Engineer with grade sheets and stations for all house laterals and Y branches and shall provide stakes for them at their proper locations with stationing plainly marked. Any change in location shall be requested in writing by the owner or his representative.
- No revisions shall be made in these plans without the approval of the County Engineer.
1. Use standard manhole frames and covers, S-a-117.
 2. Use standard strength pipe except as noted.
 3. Use cement mortar for all vitrified clay pipe joints.
 4. Resurface all trench within paved area to meet L.A. County Road Dept. or California State Highway Dept. requirements in accordance with permit.
 5. Excuse four feet of sewer at points of interference with poles, S-a-119.
 6. House laterals to be constructed with laterals of property line $\frac{1}{2}$ foot below curb grade except as noted.
 7. All structures shall be brick sewer structures, S-a-104.
 8. For allowable leakage test, use Formula No. 1, Spec'n. Sec. 81.
 9. Manhole tops in unimproved Right-of-Way to be 4" above finish grade.

PROFILE, ALIGNMENT AND GRADE OF
SANITARY SEWERS
TO BE CONSTRUCTED IN

TRACT No. 21198

PRIVATE CONTRACT NO. 3492
W. S. 38
1 SHEET

Scale: $\frac{1"=10'}{HORIZ.}$ $\frac{1"=4'}{VERT.}$ MAY-1955

PREPARED IN THE OFFICES OF
KEMMERER ENGINEERING CO., INC.

Wm. C. Kemmerer Reg. C.E. No. 6264

FOR LEGEND SEE PLAN NO. S-a-64

NOTE:
Grades to which this improvement is to be constructed are shown on plans and profiles. Grade points for top of curbs, center line of streets, or center line of alleys are shown by circles on profiles. All other points between designated points the grade shall be established so as to conform to a straight line drawn between said designated points.

Elevations are in feet above U.S.C.S. datum or mean sea level.

This drawing and the data hereon are hereby made a part of the specifications.

Work shall be constructed according to specifications on file in the office of the County Engineer and shall be presented only in the presence of the County Engineer.

Before work can be started, the contractor must obtain a permit to excavate in County streets from the L.A. County Road Dept., 180 W. 2nd St. and make a deposit with the County Engineer, 231 S. Broadway St. Room 324 sufficient to cover the cost of construction inspection and record plans.

Approval of this plan by the County of Los Angeles does not constitute a representation as to the accuracy of the location of or the existence or non-existence of any underground utility, pipe, or structure within the limits of this project. This note applies to all sheets.

If work is to be done in a State Highway, a permit must be obtained from the State of California, Division of Highways, 128 South Spring Street.

COUNTY OF LOS ANGELES, CALIFORNIA

Approved, William J. Fox, County Engineer
W. J. Fox
Sanitation Engineer

Approved, A. M. Rowe
Chief Insp. CO. 1949 REG. NO. 16
A. M. Rowe
City Engineer

Checked by *W. J. Fox*
Office of County Engineer, Reg. C.E. No. 7862.

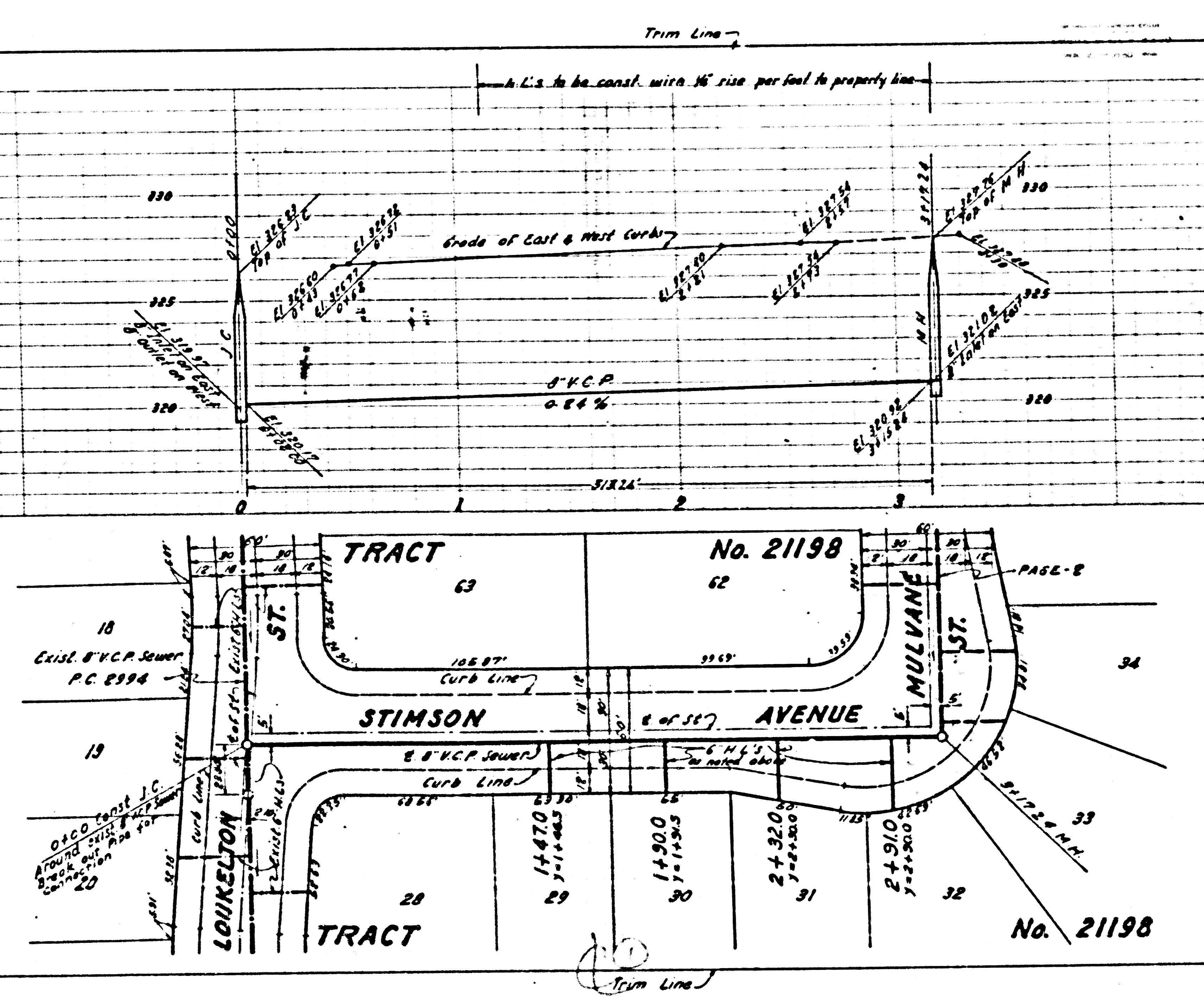
21,174

TRACT No. 21198

P.C. 3492

Trim Line

347E



PAGE 3
P.C. 3492

NO CHARGE FOR
CONNECTIONS

21,176

