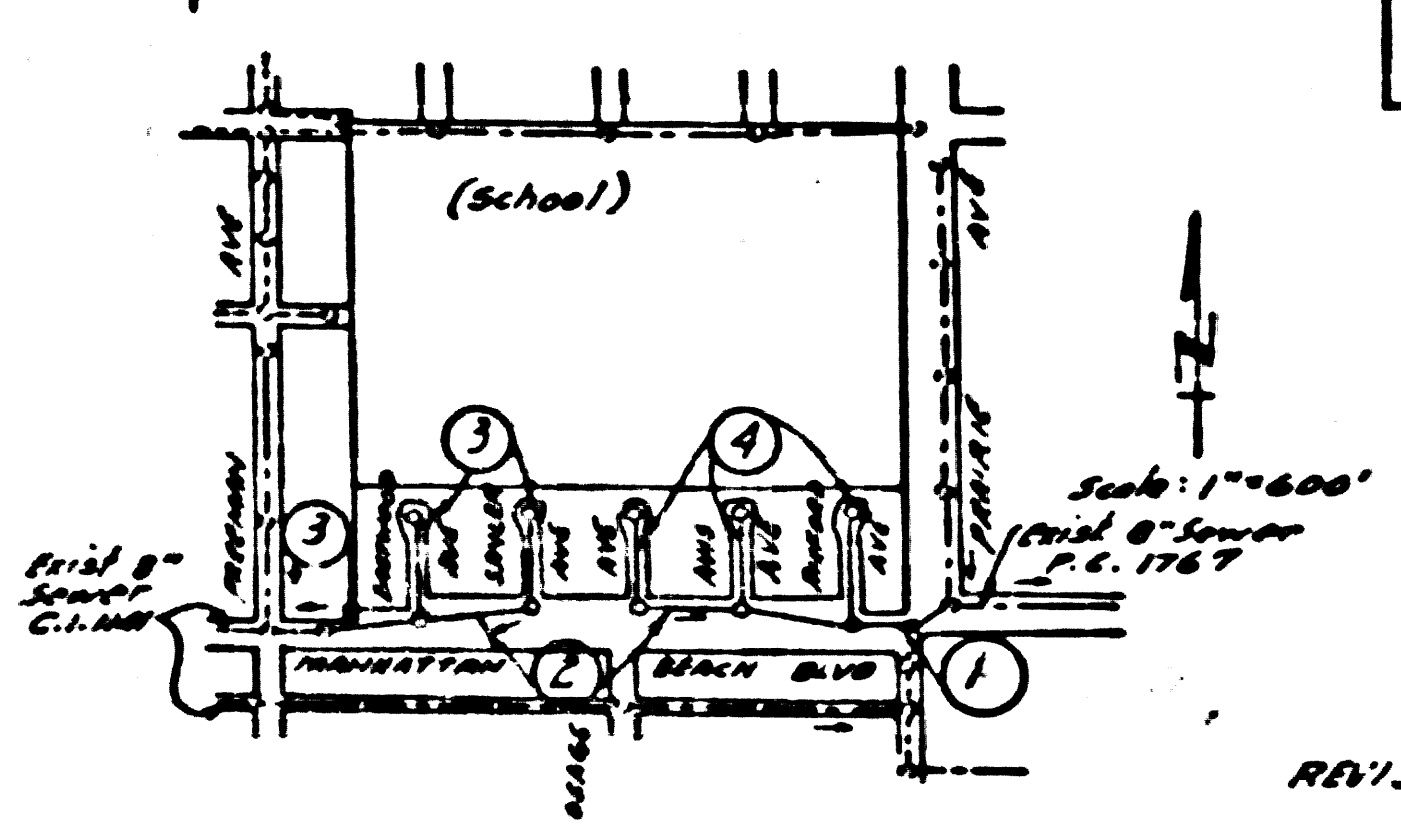


**NOTE: LENNOX BLDG, DIST N° 7**

- Provide stakes on the property lines or property lines produced at right angles to the sewer line at the center line of each manhole.
- No representative of the County Engineer will survey or layout any portion of the work.
- The owner or his authorized representative shall furnish the County Engineer with grade sheets and stations for all house laterals and Y branches and shall provide stakes for them at their proper locations with stationing plainly marked. Any change in location shall be requested in writing by the owner or his representative.
- No revisions shall be made in these plans without the approval of the County Engineer.
1. Use standard manhole frames and covers, S-a-117. *Except as noted.*
  2. Use standard strength pipe.
  3. Use cement mortar for all verified clay pipe joints.
  4. Resurface all trench within paved area to meet L.A. County Road Dept. or California State Highway Dept. requirements in accordance with permit.
  5. Excise four feet of sewer at points of interference with poles, S-a-119.
  6. House laterals to be constructed with a 1/8" rise per ft. to property line.
  7. All structures shall be brick sewer structures, S-a-104. *Except as noted.*
  8. For allowable leakage test, use Formula No. 1, Spec's, Sec. 51.
  9. Manhole tops to be approved Highways Dept. for use on Highways.

B.M. 51103 El. 48.034 County  
Surv. Man @ E. Int. of  
Manhattan Beach Blvd & Prairie Ave



INDEX MAP  
TRACT NO 21367  
P.C. 3494

REVISIONS CHECKED  
By: P. Collins 8-15-55  
Office of County Engineer, Box C.E. No. 2840

Dated 7-12-55 Nelson

PROFILE, ALIGNMENT AND GRADE OF  
**SANITARY SEWERS**  
TO BE CONSTRUCTED IN

TRACT N° 21367  
PRIVATE CONTRACT NO. 3494  
W. S. 25  
ONE SHEET

Scale:  $\frac{1"=40'}{HORIZ.}$   $\frac{1"=4'}{VERT.}$  APRIL 1955  
PREPARED IN THE OFFICES OF  
**BARCLAY SURVEYING CO.**  
G. J. B. Site  
No. C.E. No. 1187

FOR LEGEND SEE PLAN NO. S-a-64

**NOTE:**  
Grades to which this improvement is to be constructed are shown on plans and profiles. Grade points for top of curbs, corner line of streets, or center line of alleys are shown by circles on profiles. At all points between designated points the grade shall be established so as to conform to a straight line drawn between said designated points.  
Elevations are in feet above U.S.G.S. datum or mean sea level.  
This drawing and the data hereon are hereby made a part of the specifications.  
Work shall be constructed according to specifications on file in the office of the County Engineer and shall be prosecuted only in the presence of the County Engineer.  
Before work can be started, the contractor must obtain a permit to excavate in County streets from the L.A. County Road Dept. 108 W 2nd St. and make a deposit with the County Engineer, Room 284, 282 South Broadway, sufficient to cover the cost of construction inspection and record plan.  
Approval of this plan by the County of Los Angeles does not constitute a representation as to the accuracy of the location of or the existence or non-existence of any underground utility, pipe, or structure within the limits of this project. This note applies to all sheets.  
If work is to be done in a State Highway, a permit must be obtained from the State of California, Division of Highways, 120 South Spring Street.

COUNTY OF LOS ANGELES, CALIFORNIA

Approved, William J. Fox, County Engineer  
A. P. Collins  
Assistant Engineer

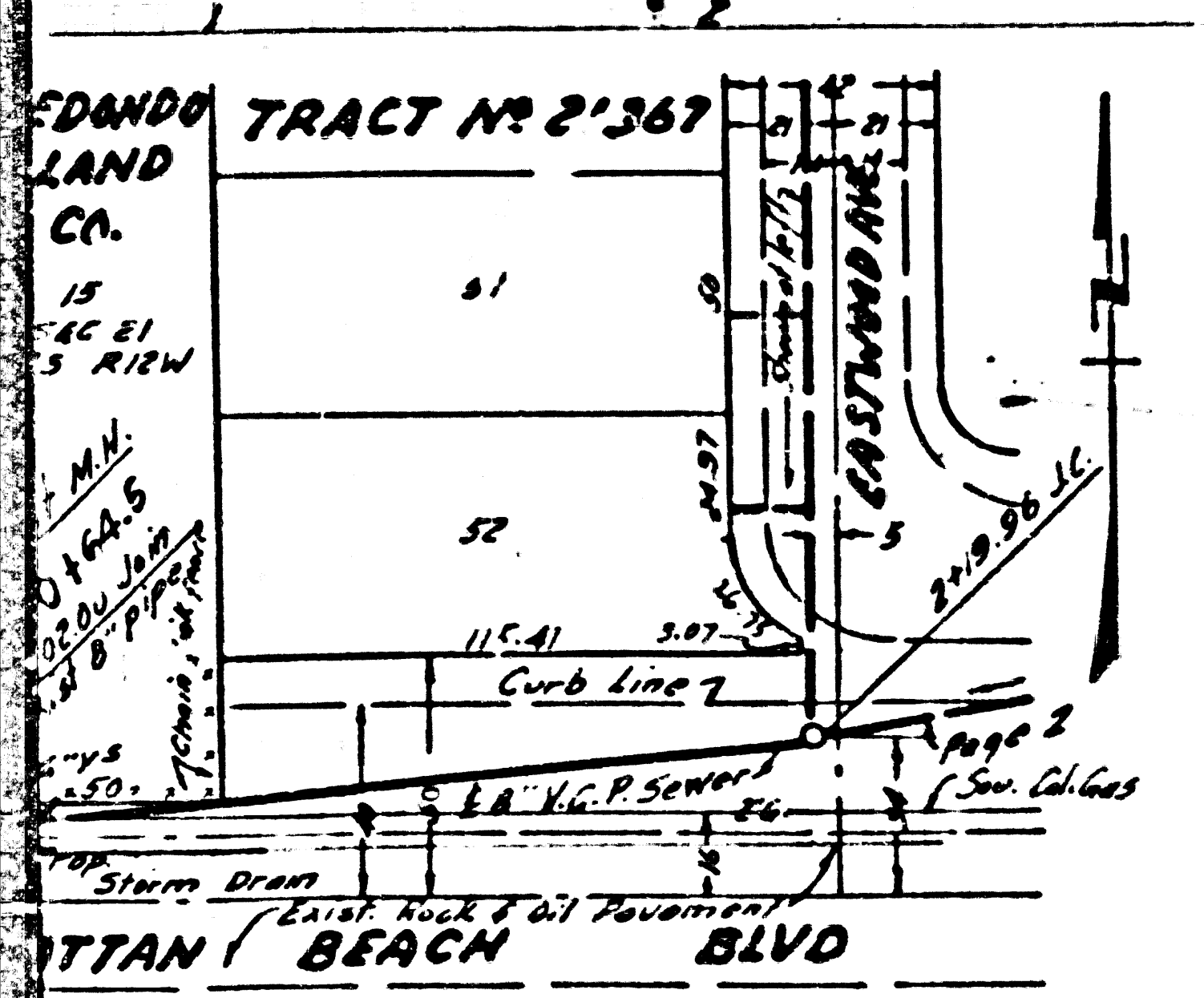
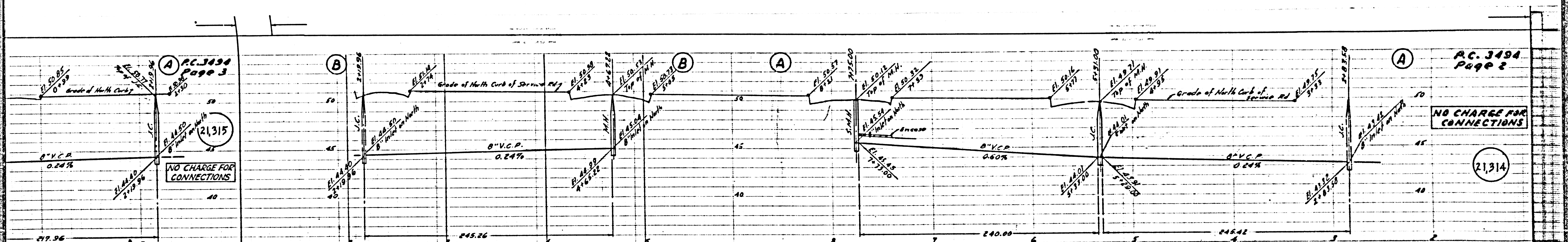
Approved, A. M. Rawn  
CHIEF ENGR. CO. SAN. DIST. NO. 5  
By: J. L. Westerman  
City Engineer

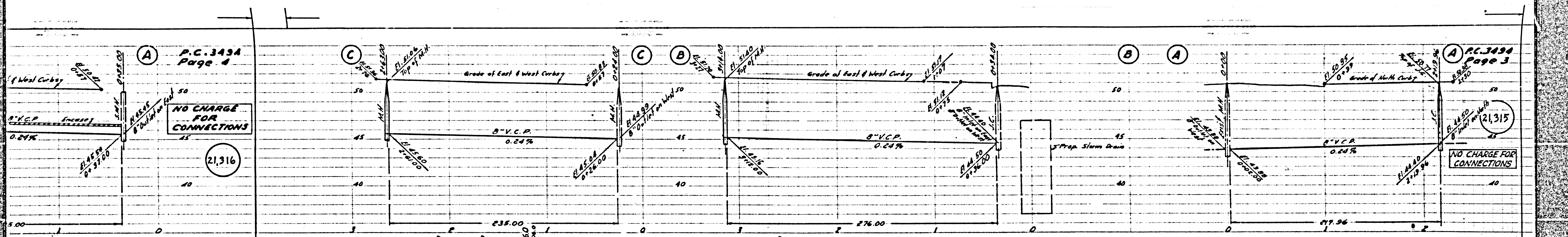
Checked by: P. Collins 6-8-55  
Office of County Engineer, Box C.E. No. 2840

21313

P.C. 3494 TRACT N° 21367  
21-63-112  
P.C. 3494

R.L.





P.C. 3434  
Page 4

NO CHARGE FOR CONNECTIONS

21,316

P.C. 3434  
Page 3

NO CHARGE FOR CONNECTIONS

21,315

