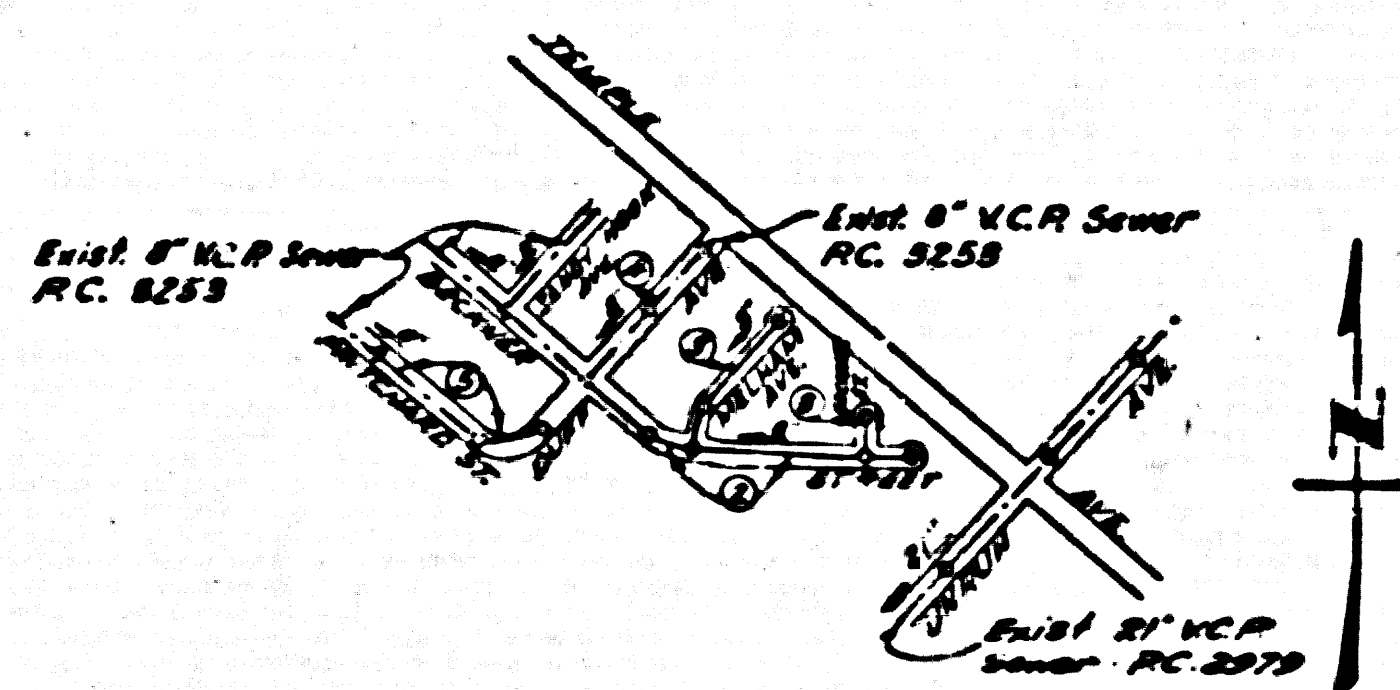


02  
2  
FOR  
ONE

S.M. 58 1107 L.E.P. N. ch. Elliot Avenue, 18' E  
W. ch. ref. @ N.W. corner Cadwall & Elliot  
Assumed elev. 324.21, 1953 Adj. elev. 324.22  
Add 0.01' to elevations on this plan to be an S.C. datum.



**NO CHARGE FOR CONNECTIONS**  
*L. Suter* 5-11-55

INDEX MAP  
TRACT NO. 15899  
SCALE 1" = 60'  
R.C. 3502

Checked 7-13-55 *W. Kern*

Trim Line 7

**PUENTE BLDG. DIST. No 2**

- NOTE:**  
Provide status on the property lines or property lines produced at right angles to the sewer line at the corner line of each manhole.  
No representative of the County Engineer will survey or layout any portion of the work.  
The owner or his authorized representative shall furnish the County Engineer with grade sheets and stations for all house laterals and V branches and shall provide status for them at their proper locations with stationing plainly marked. Any change in location shall be requested in writing by the owner or his representative.  
No revisions shall be made in these plans without the approval of the County Engineer.
1. Use standard manhole frames and covers, S-a-117.
  2. Use standard strength pipe.
  3. Use cement mortar for all vitrified clay pipe joints.
  4. Resurface all trench within paved area to meet L.A. County Road Dept. or California State Highway Dept. requirements in accordance with permit.
  5. Excise four feet of sewer at points of interference with poles, S-a-119.
  6. House laterals to be constructed with inverts at property line, 6 feet below curb grade except as noted.
  7. All structures shall be brick sewer structures, S-a-104.
  8. For allowable leakage test, use Formula No. 1, Spec's, Sec. 51.

SHEET NO.	PAGES
1	1-5

PROFILE, ALIGNMENT AND GRADE OF  
**SANITARY SEWERS**  
TO BE CONSTRUCTED IN  
**TRACT No 15899**

R.C. 3502  
PAGE 1

20,885

PRIVATE CONTRACT NO. 3502  
W. S. 38  
**ONE SHEET**

Scale: VERT. 1" = 4'  
HORIZ. 1" = 40' MAY, 1955

PREPARED UNDER  
THE SUPERVISION OF  
*Robert G. Lehning*  
C.E.C. No. 4109

FOR LEGEND SEE PLAN NO. S-a-64

**NOTE:**  
Grades to which the improvement is to be constructed are shown on plans and profiles. Grade points for top of curbs, center line of streets, or center line of alleys are shown by circles on profiles. At all points between designated points the grade shall be established as to conform to a straight line drawn between said designated points.  
Elevations are in feet above U.S.C.S. datum or mean sea level.  
This drawing and the data hereon are hereby made a part of the specifications.  
Work shall be constructed according to specifications on file in the office of the County Engineer and shall be prosecuted only in the presence of the County Engineer.  
Before work can be started, the contractor must obtain a permit to excavate in County streets from the L.A. County Road Dept., 108 W. 2nd St. and make a deposit with the County Engineer, 255 South Broadway, Rm. B24, sufficient to cover the cost of construction inspection and record plans.  
Approval of this plan by the County of Los Angeles does not constitute a representation as to the accuracy of the location of or the existence or non-existence of any underground utility, pipe, or structure within the limits of this project. This note applies to all sheets.  
If work is to be done in a State Highway, a permit must be obtained from the State of California, Division of Highways, 120 South Spring Street.  
**COUNTY OF LOS ANGELES, CALIFORNIA**  
Approved, William J. Frazer, County Engineer Approved, A. M. Boun  
CIVIL ENGINEER, CO. SAN DIST. NO. 18  
*A. P. Collins* *J. P. ...*  
Checked by: *R. S. ...* S-3-51  
Office of County Engineer, Dep. C. & E. No. 746a.

TRACT No 15899  
R.C. 3502

Trim Line

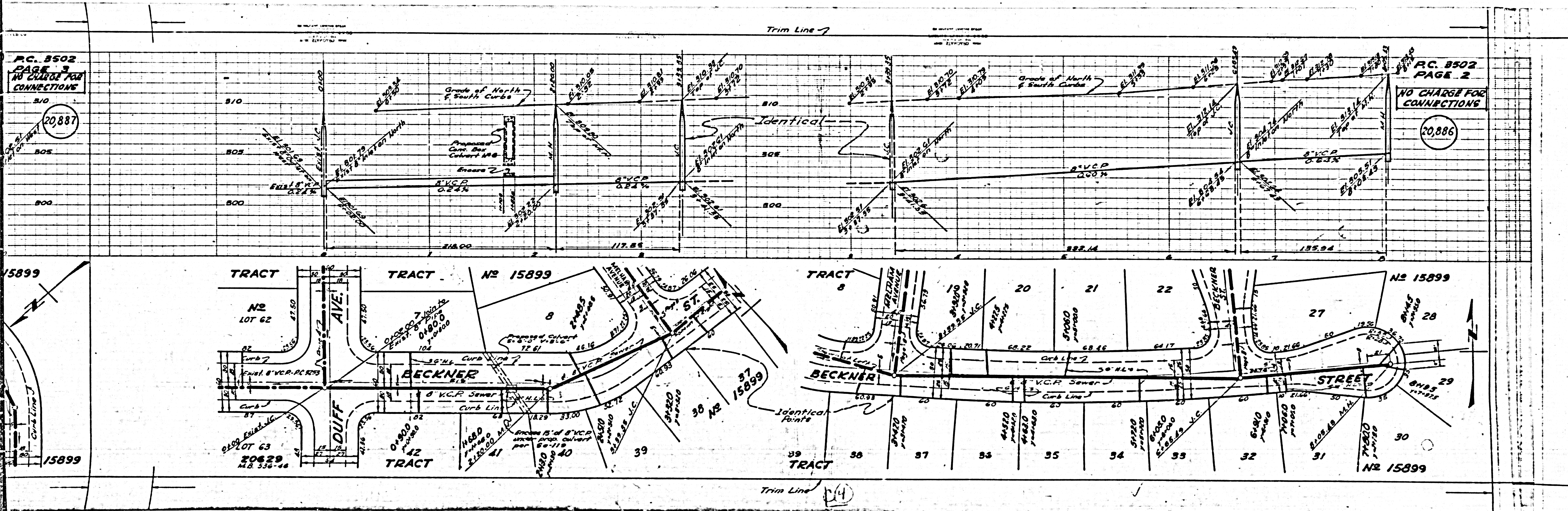
P.C. 8502  
PAGE 1  
NO CHARGE FOR  
CONNECTIONS

20,887

P.C. 8502  
PAGE 2

NO CHARGE FOR  
CONNECTIONS

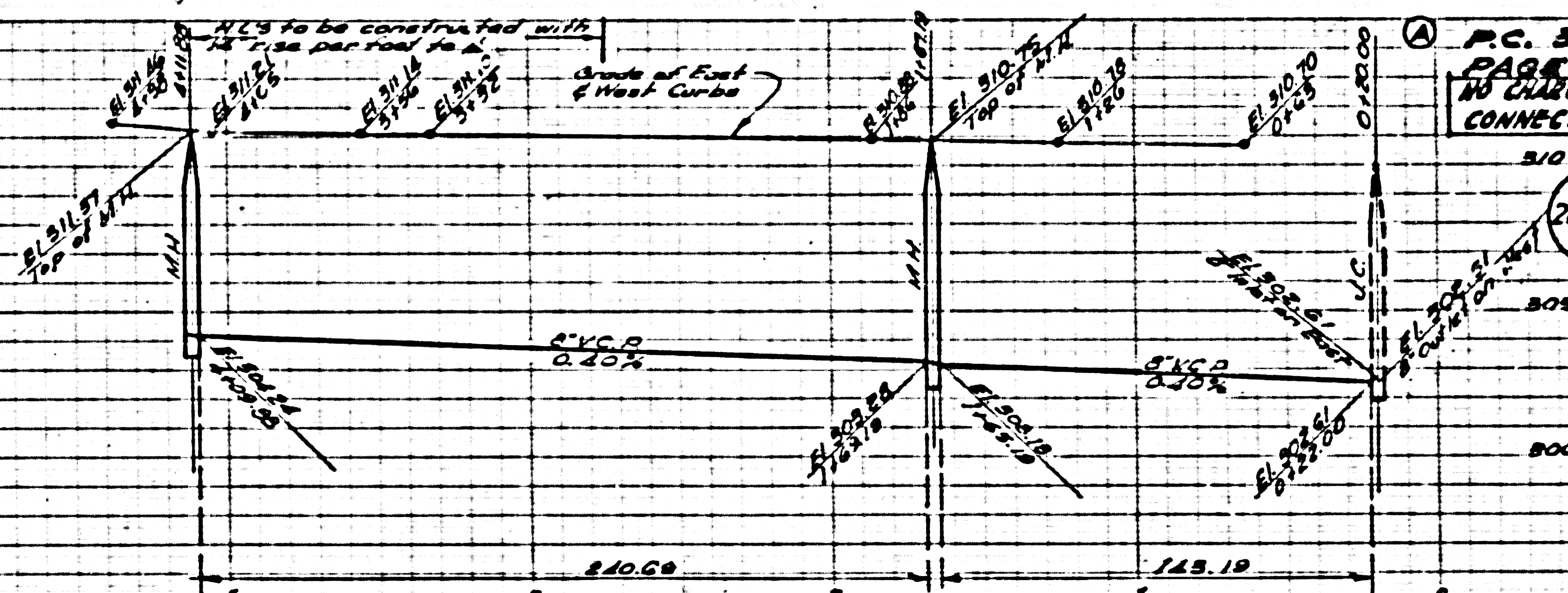
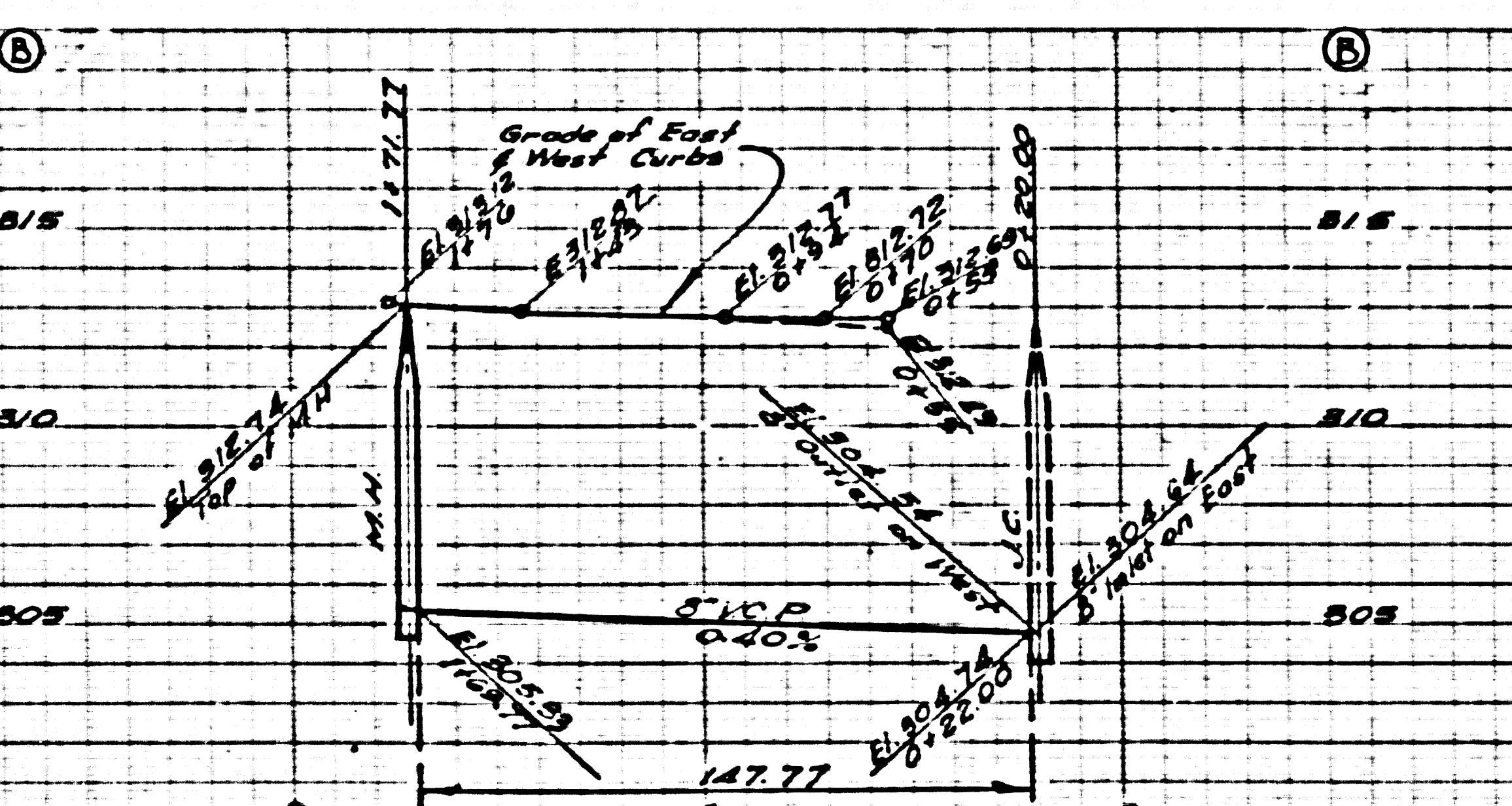
20,886



PC 3502  
PAGE 4

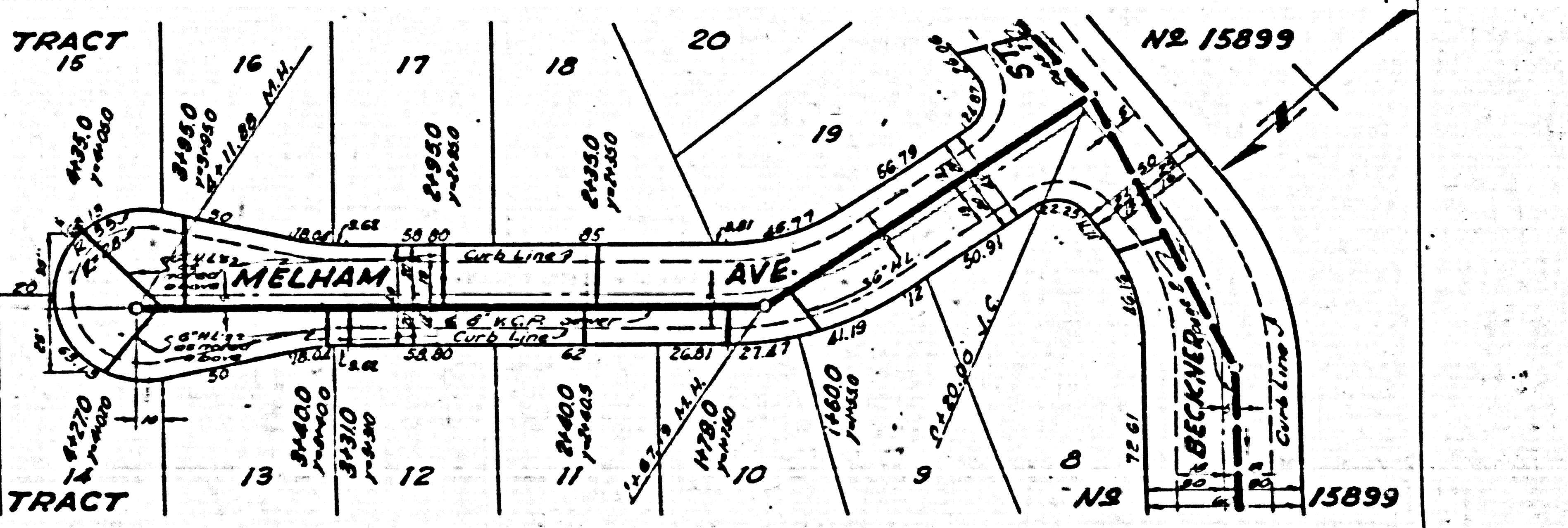
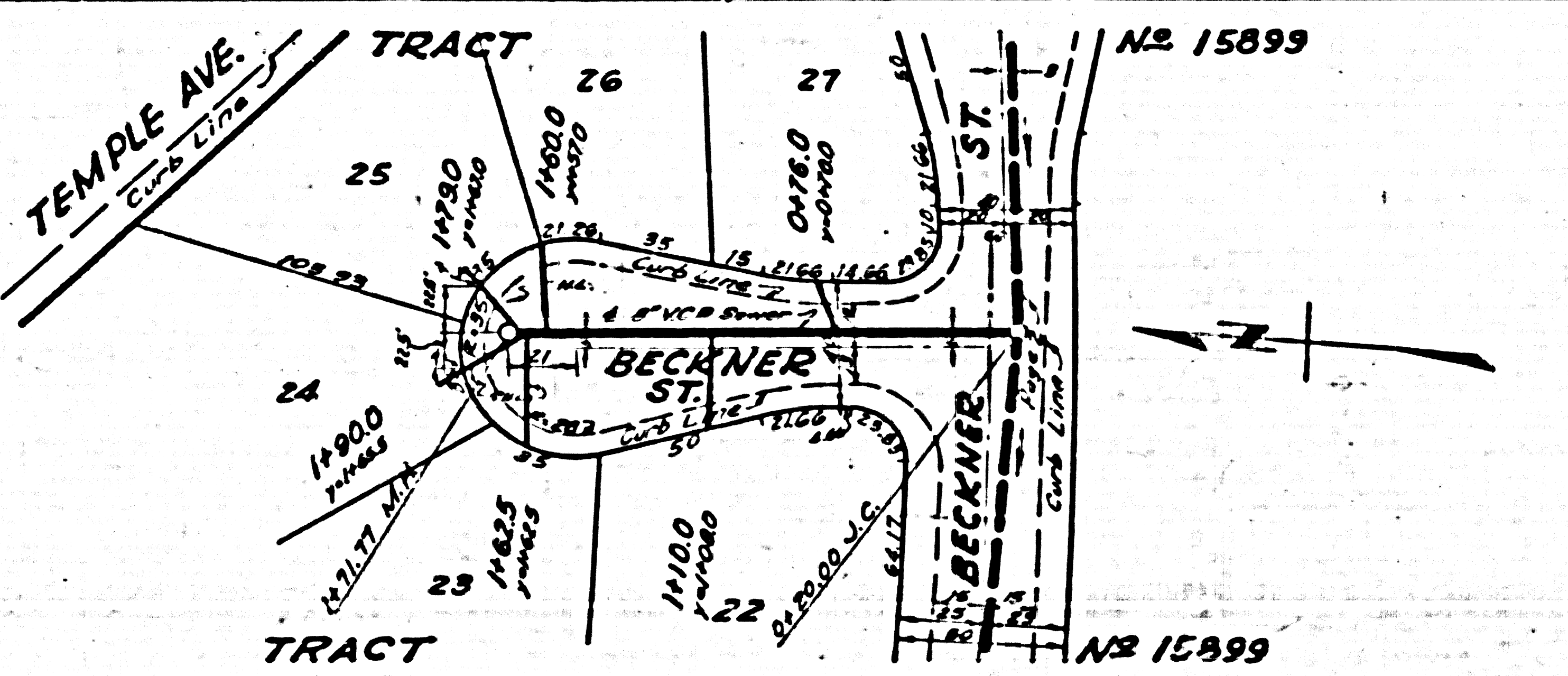
NO CHARGE FOR  
CONNECTIONS

20,888



PC 3512  
PAGE 3  
NO CHARGE FOR  
CONNECTIONS

20,887



(3)

RC. 3502  
PAGE 5

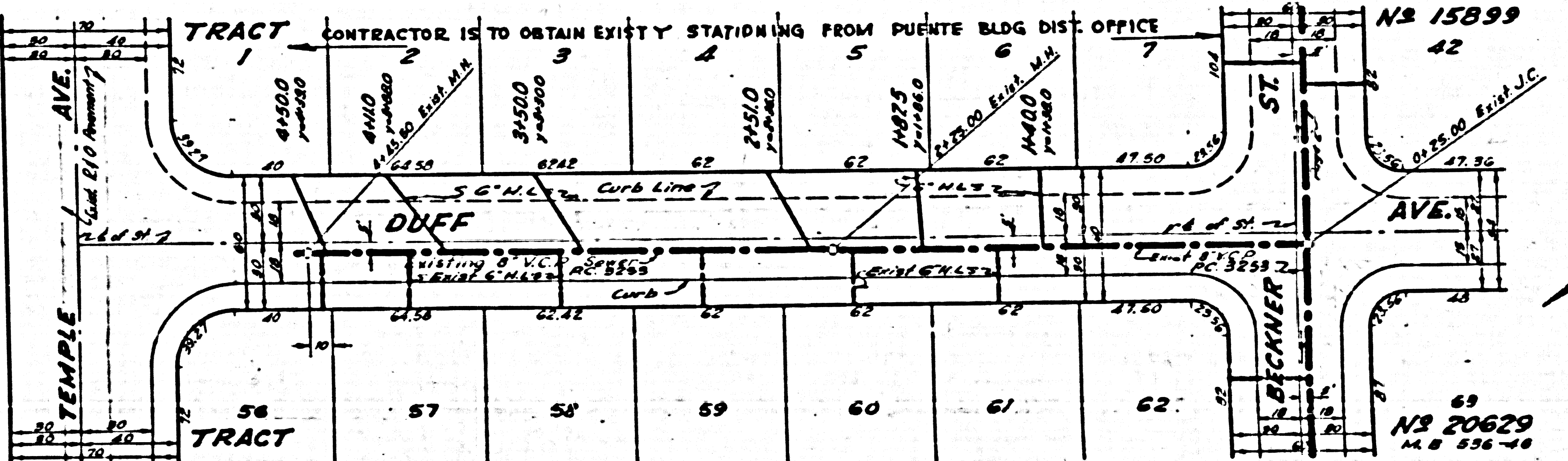
NO CHARGE FOR  
CONNECTIONS

20,889

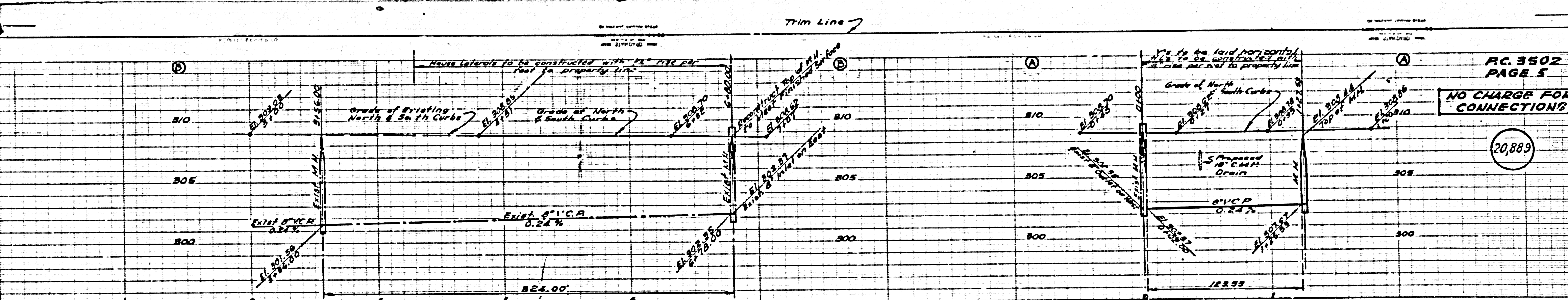
RC. 3502  
PAGE 4

NO CHARGE FOR  
CONNECTIONS

20,888

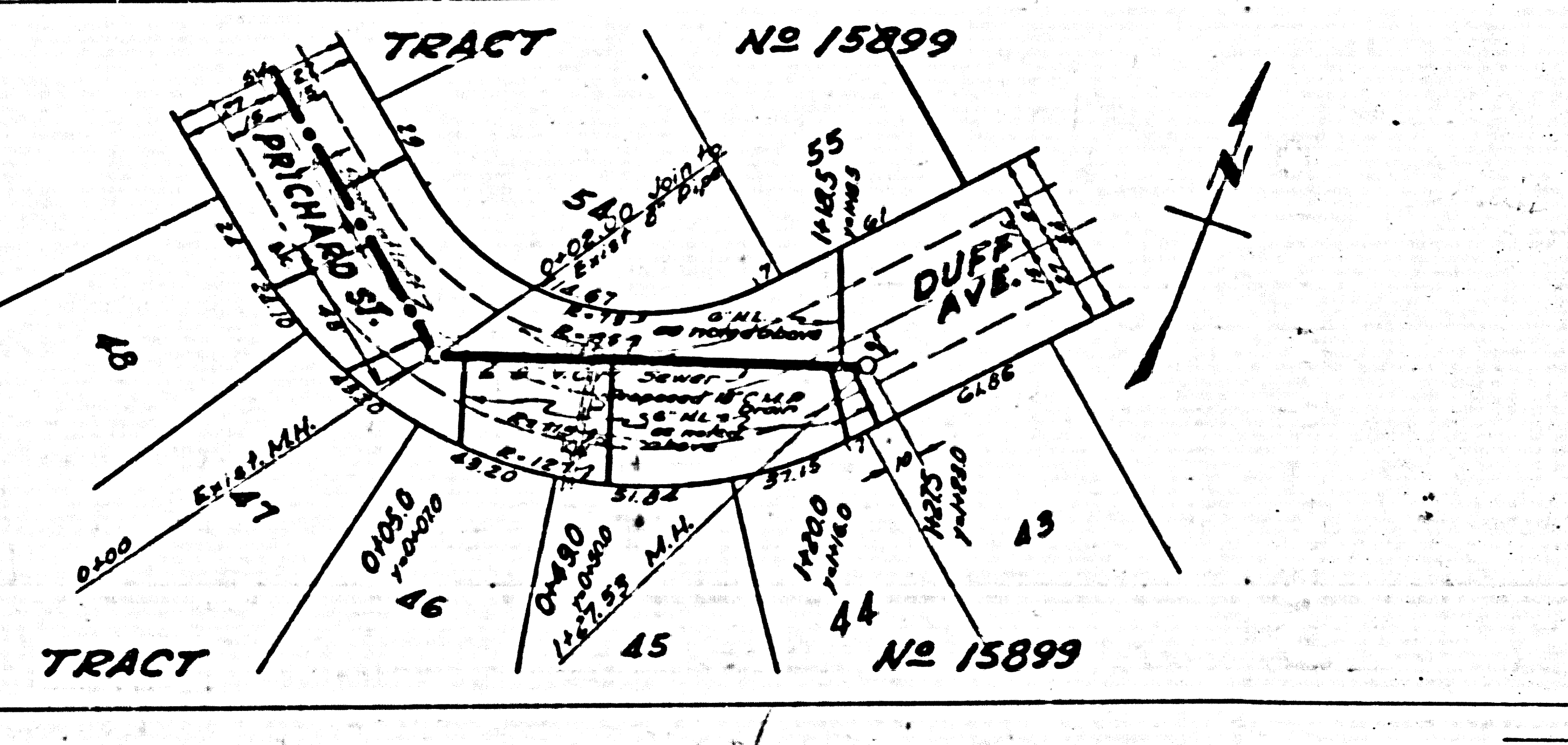
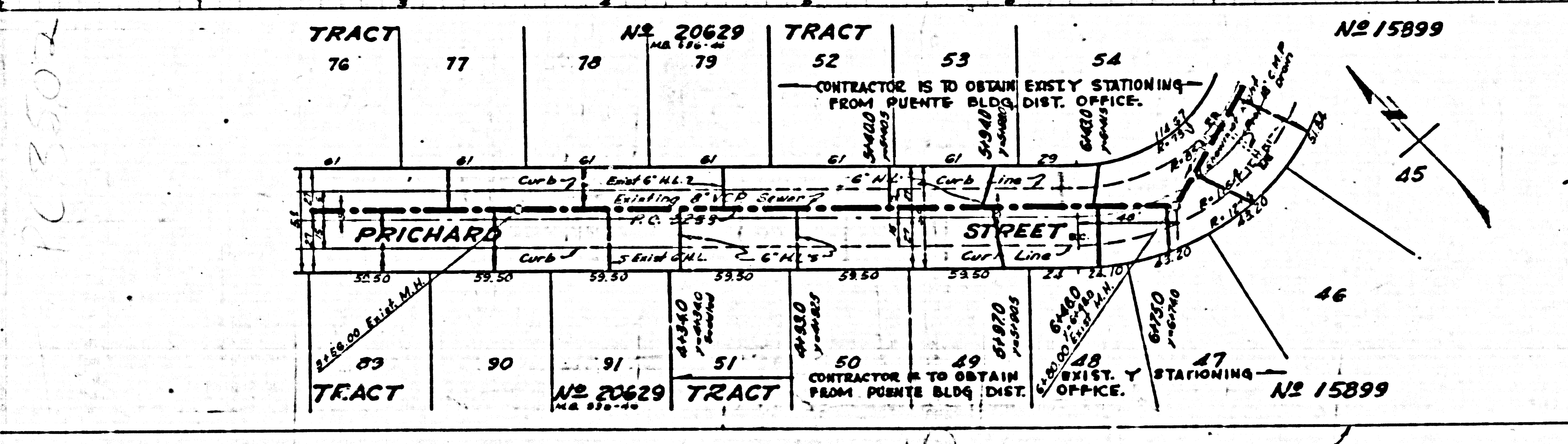


Trim Line



RC 3502  
PAGE 5  
NO CHARGE FOR CONNECTIONS

(20,883)



103502

Trim Line