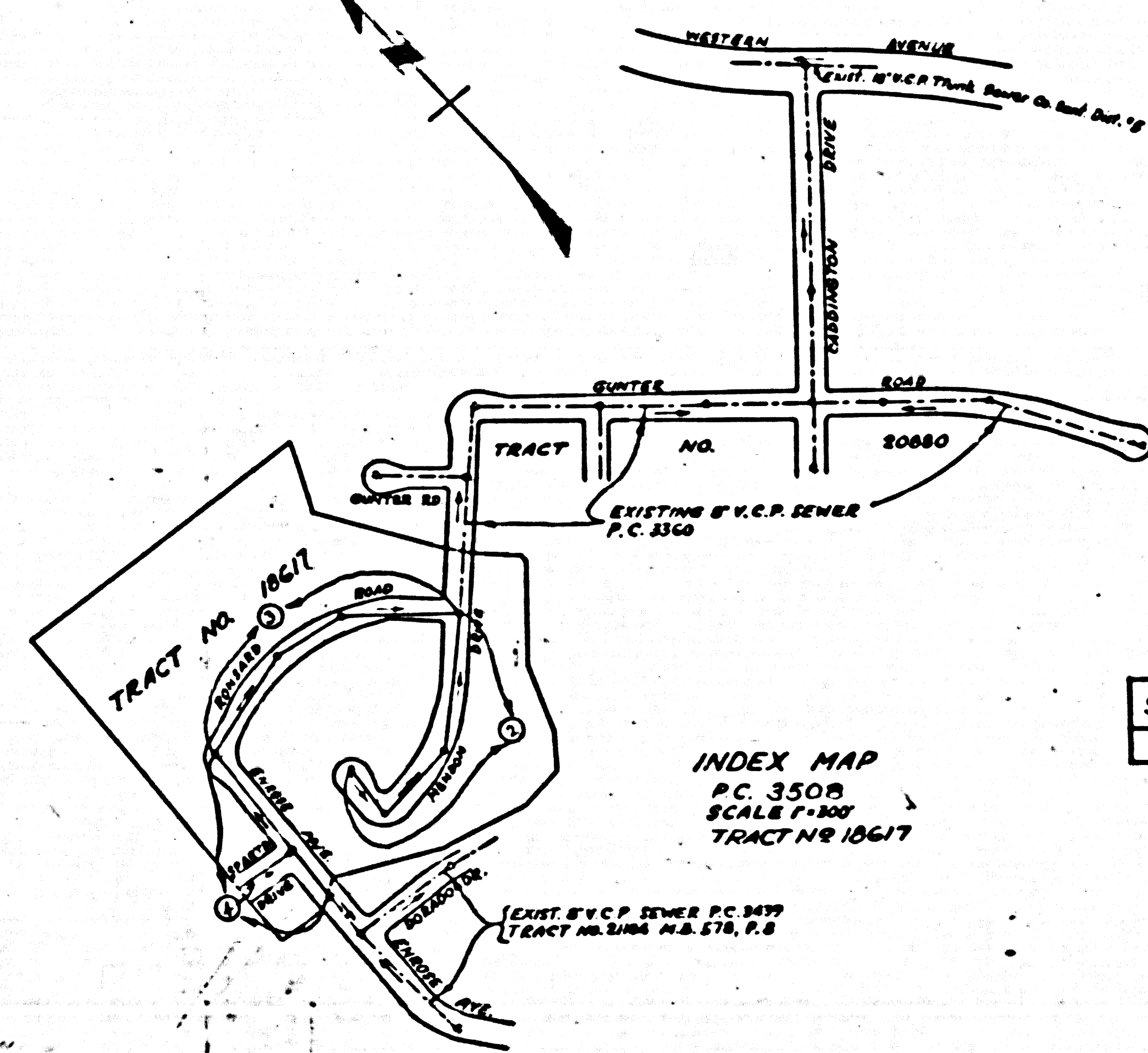


BENCH MARK: L.A. Co. Surveyors B.M. 35-C, F.B. 1356, Pg. 12 San Pedro, an Approx. 1/4 of Western Ave. about 96 Ft. N. of Channel Drive in "Imperial Pedestrian Crosswalk" a 4" Hexagon Bar set in Concrete 8 inches below the surface and protected by a cast Iron Cover marked "City L.A. Monument Engineering" with "S.P.H.F. - 54" Painted on November 1953 Adjusted ELEV. 297.161



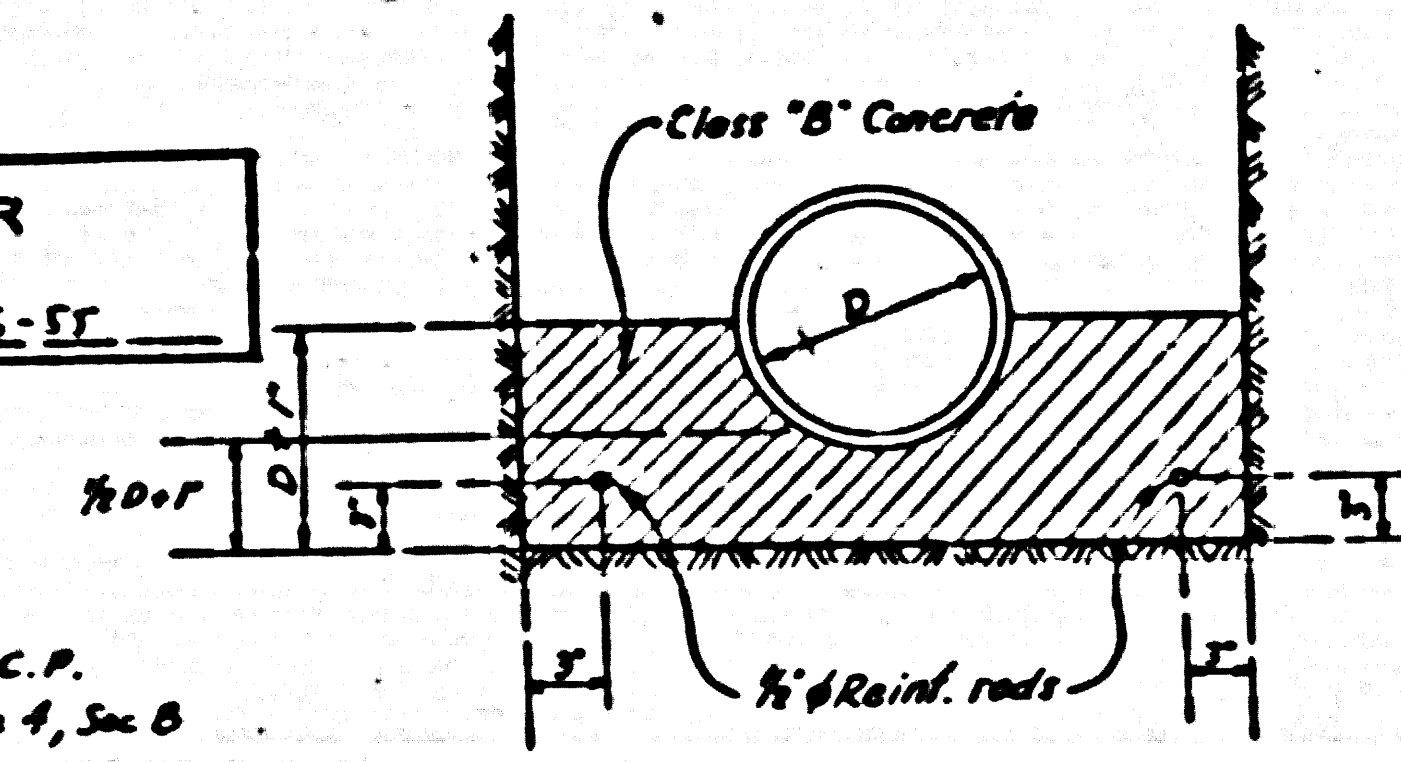
SHEET NO	PAGES
1	1-2

LOMITA BLDG. DIST. NO. 7 L.

- NOTE:**
- Provide stakes on the property lines or property lines produced at right angles to the sewer line at the center line of each manhole.
 - No representative of the County Engineer will survey or layout any portion of the work.
 - The owner or his authorized representative shall furnish the County Engineer with grade sheets and stations for all house laterals and Y branches and shall provide stakes for them at their proper locations with stationing plainly marked. Any change in location shall be requested in writing by the owner or his representative.
 - No revisions shall be made in these plans without the approval of the County Engineer.
 - Use standard manhole frames and covers, S-a-117.
 - Use standard strength pipe except as noted.
 - Use cement mortar for all vitrified clay pipe joints, except as noted.
 - Resurface all trench within paved area to meet L.A. County Road Dept. or California State Highway Dept. requirements in accordance with permit.
 - Erease four feet of sewer at points of interference with poles, S-a-119.
 - House laterals to be constructed with inverts at property line _____ feet below curb grade except as noted.
 - All structures shall be brick sewer structures, S-a-104.
 - For allowable leakage test, use Formula No. _____, Spec's., Sec. 51.
 - (a) No construction will be permitted in filled areas unless acceptable certification is submitted to the construction Division of the County Engineering Dept. that compaction is greater than 80%.
 - (b) If compaction is less than 80% the sewer must be cradled as shown in detail page 1.
 - (c) If compaction is greater than 80% cradling is not required. However joint compound must be substituted for cement mortar for all joints in filled area.

NO CHARGE FOR CONNECTIONS
Rsk 12-6-55

Revision Approved: Add 8" V.C.P. Lateral in Sports Dr. - Page 4, Sec. B
 Approved: *Rsk* 7-19-56
 Office of County Engineer



SPECIAL CRADLE FOR SEWERS IN FILLED AREAS

PROFILE, ALIGNMENT AND GRADE OF
SANITARY SEWERS
 TO BE CONSTRUCTED IN

TRACT NO. 18617

PRIVATE CONTRACT NO. 350B
 W. S. 2B
 1 SHEET.

Scale: VERT. 1"=8'
 HORIZ. 1"=40'

PREPARED IN THE OFFICES OF
NATIONAL ENGINEERING & SURVEYING SERVICE CO.

E. J. Sperson
 P.E. No. 6818

FOR LEGEND SEE PLAN NO. S-a-64

P.C. 350B
 PAGE 1

23,284

(4)

NOTE:

Grades to which this improvement is to be constructed are shown on plans and profiles. Grade points for top of curbs, center line of drives, or center line of alleys are shown by circles on profiles. All points between designated points the grade shall be established so as to conform to a straight line drawn between said designated points.

Elevations are in feet above U.S.G.S. datum or mean sea level.

This drawing and the data hereon are hereby made a part of the specifications.

Work shall be constructed according to specifications on file in the office of the County Engineer and shall be prosecuted only in the presence of the County Engineer.

Before work can be started, the contractor must obtain a permit to excavate in County streets from the L.A. County Road Dept., 108 W. 2nd St. and make a deposit with the County Engineer, P.C. 350B, Sec. B, amounting to _____ sufficient to cover the cost of construction inspection and record plans.

Approval of this plan by the County of Los Angeles does not constitute a representation as to the accuracy of the location of or the existence or non-existence of any underground utility, pipe, or structure within the limits of this project. This note applies to all sheets.

If work is to be done in a State Highway, a permit must be obtained from the State of California, Division of Highways, 120 South Spring Street.

COUNTY OF LOS ANGELES, CALIFORNIA

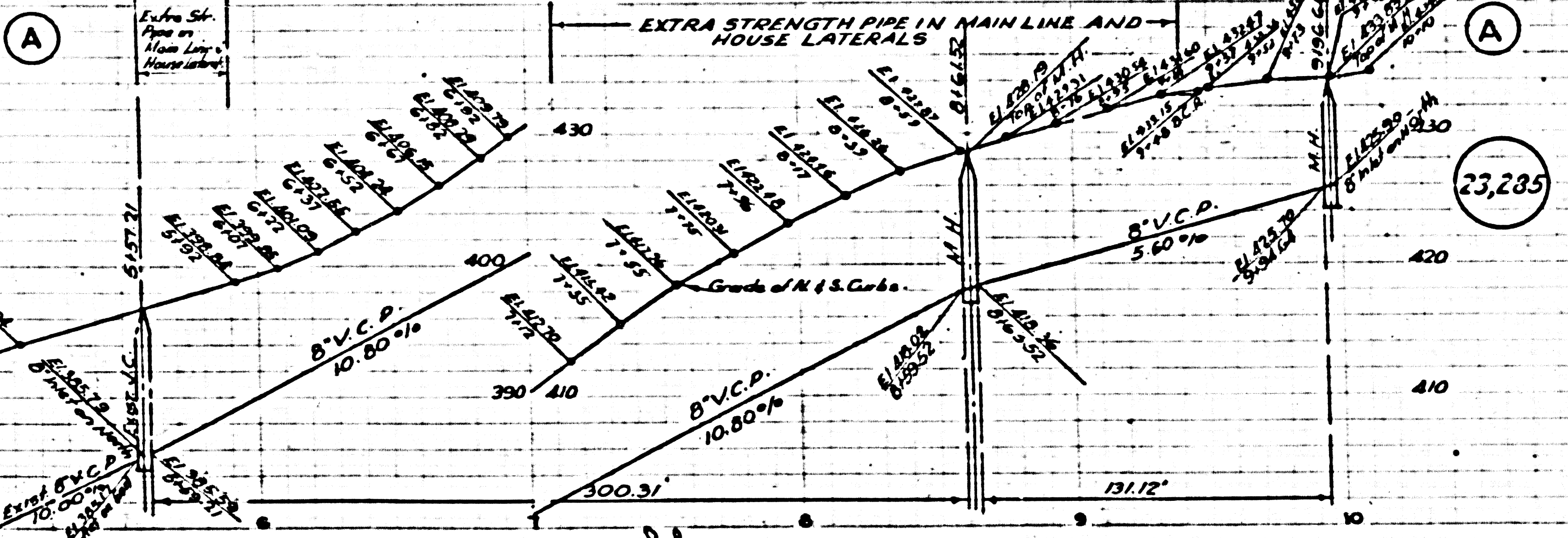
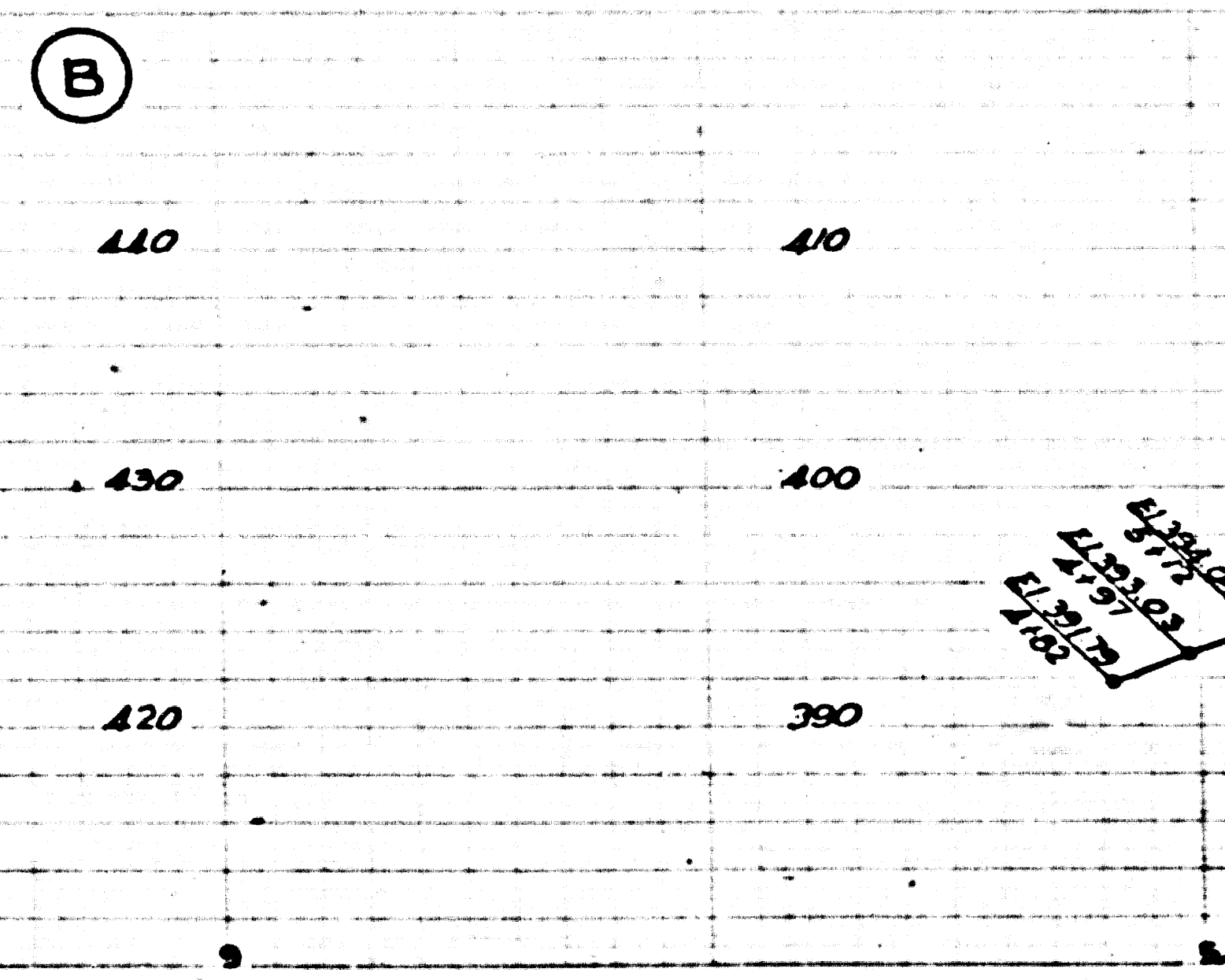
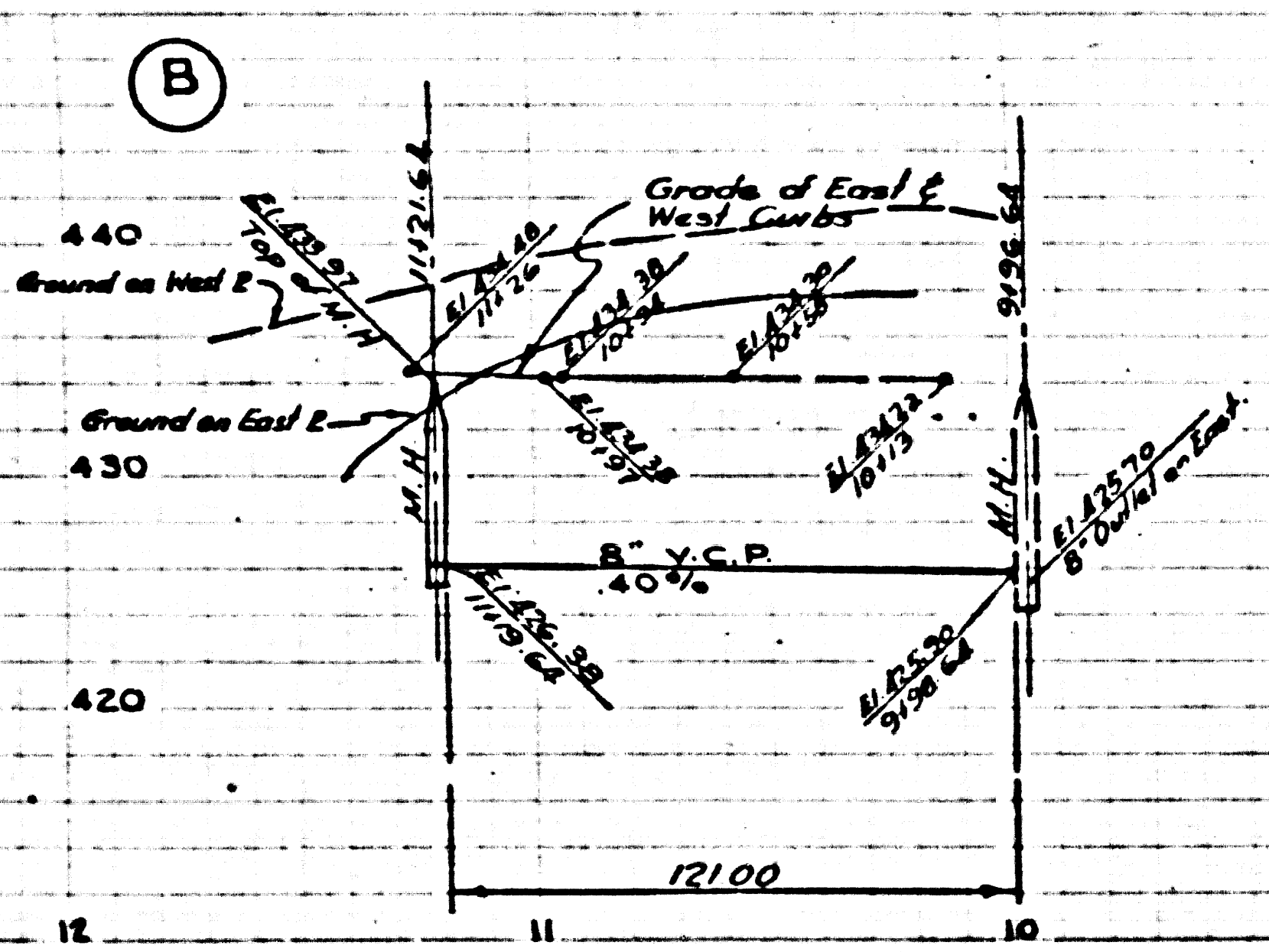
Approved, John A. Lambel County Engineer
 Approved, A. M. Raven
 CHIEF FIELD CLERK DIST. NO. 2

A. P. Collins
A. M. Raven

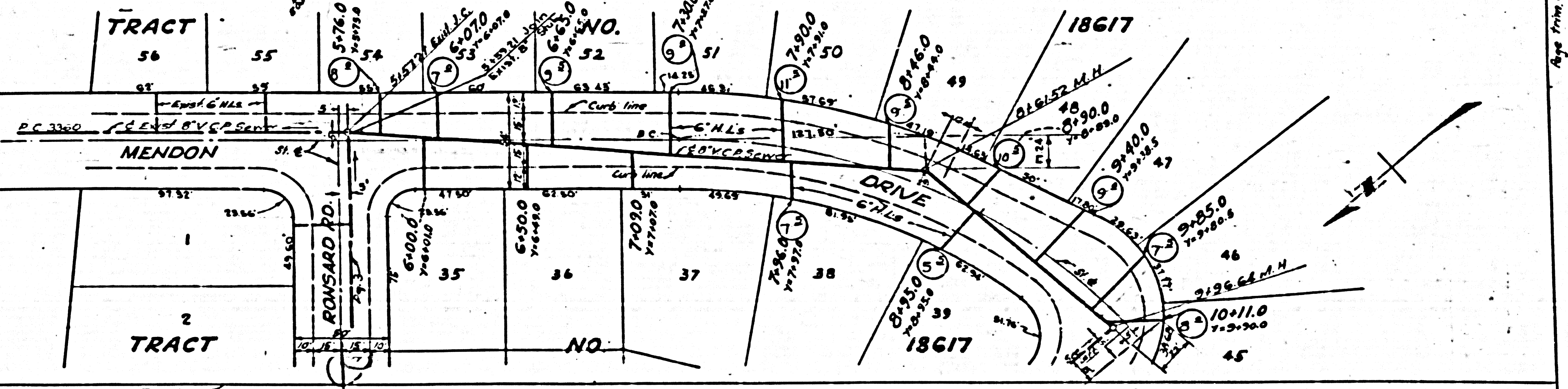
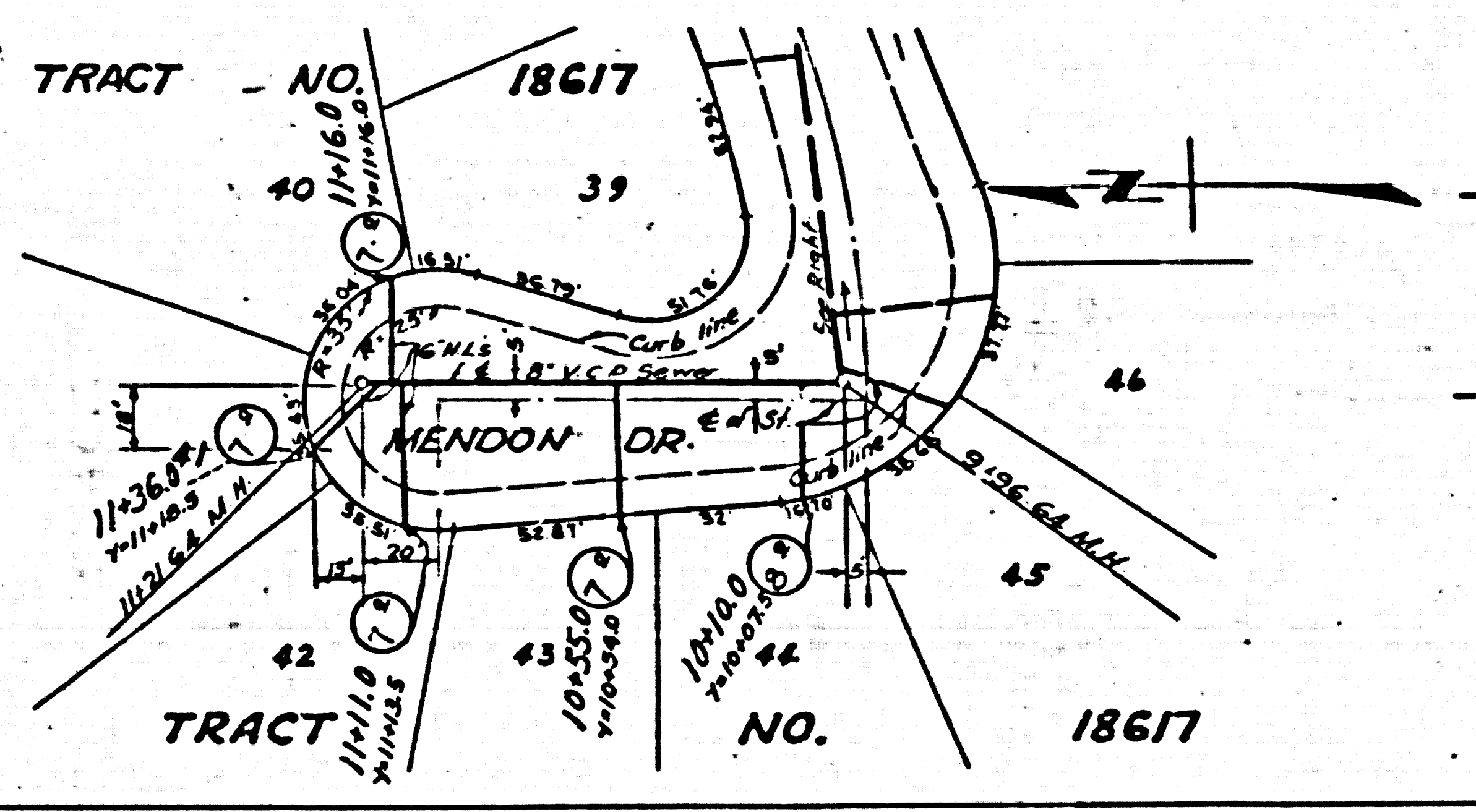
Checked by: *Rsk* 12-6-55
 Office of County Engineer, Reg. C. S. No. 7862

dated 8-23-56 M. Larson

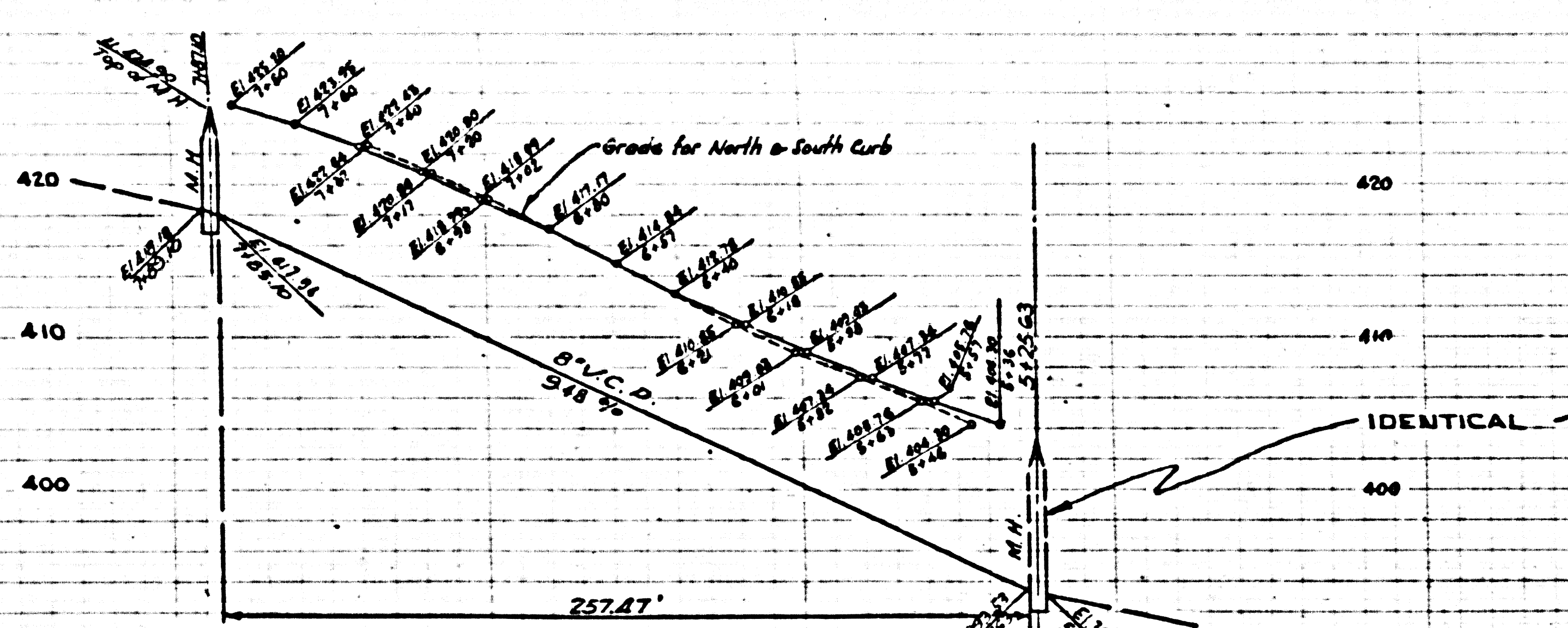
Trim Line



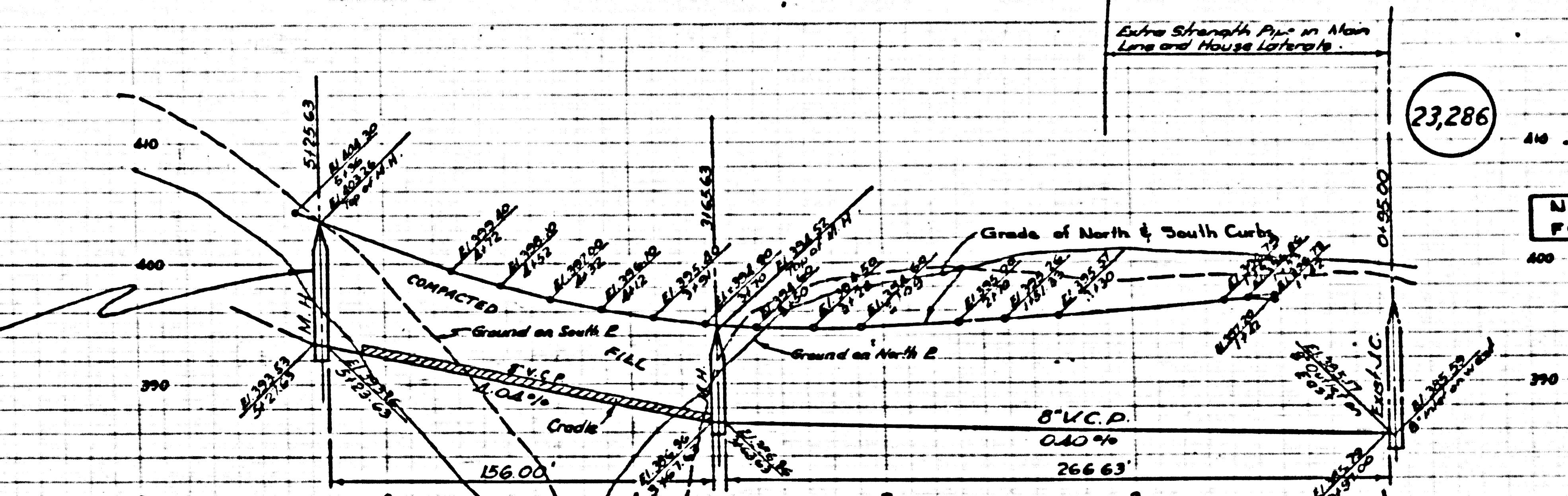
P.C. 3508
PAGE 2
DOUBLE SCALE
NO CHARGE FOR CONNECTIONS



Above Trim Line

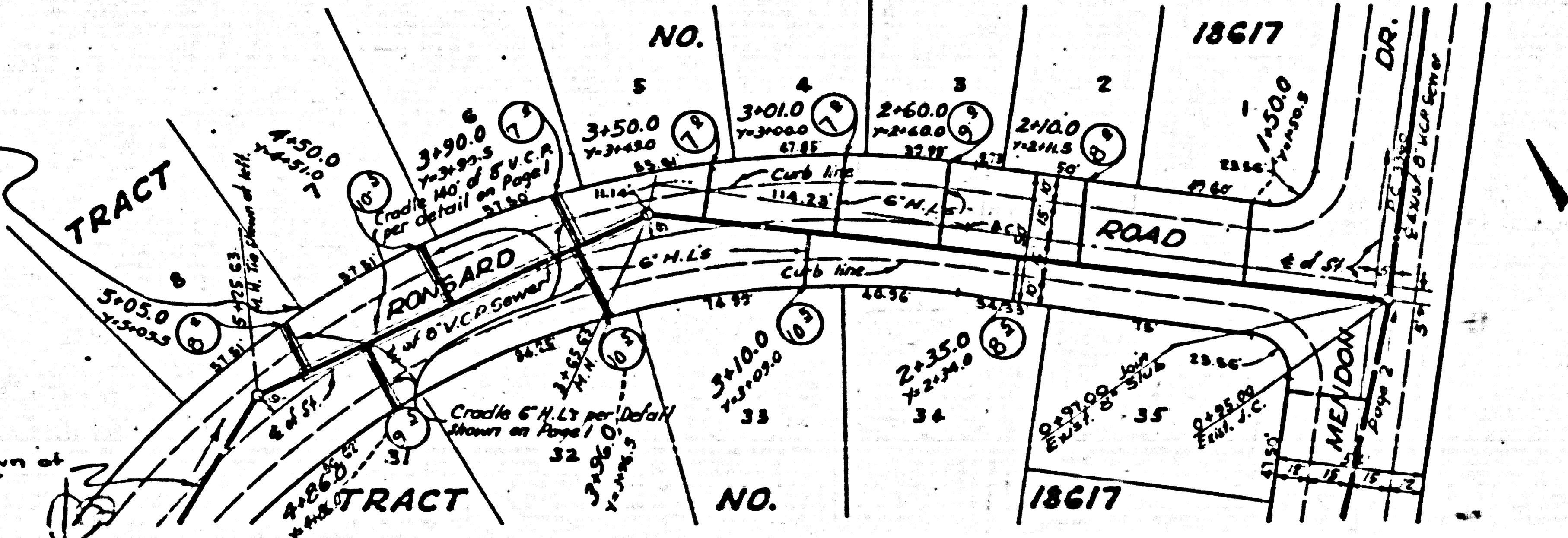
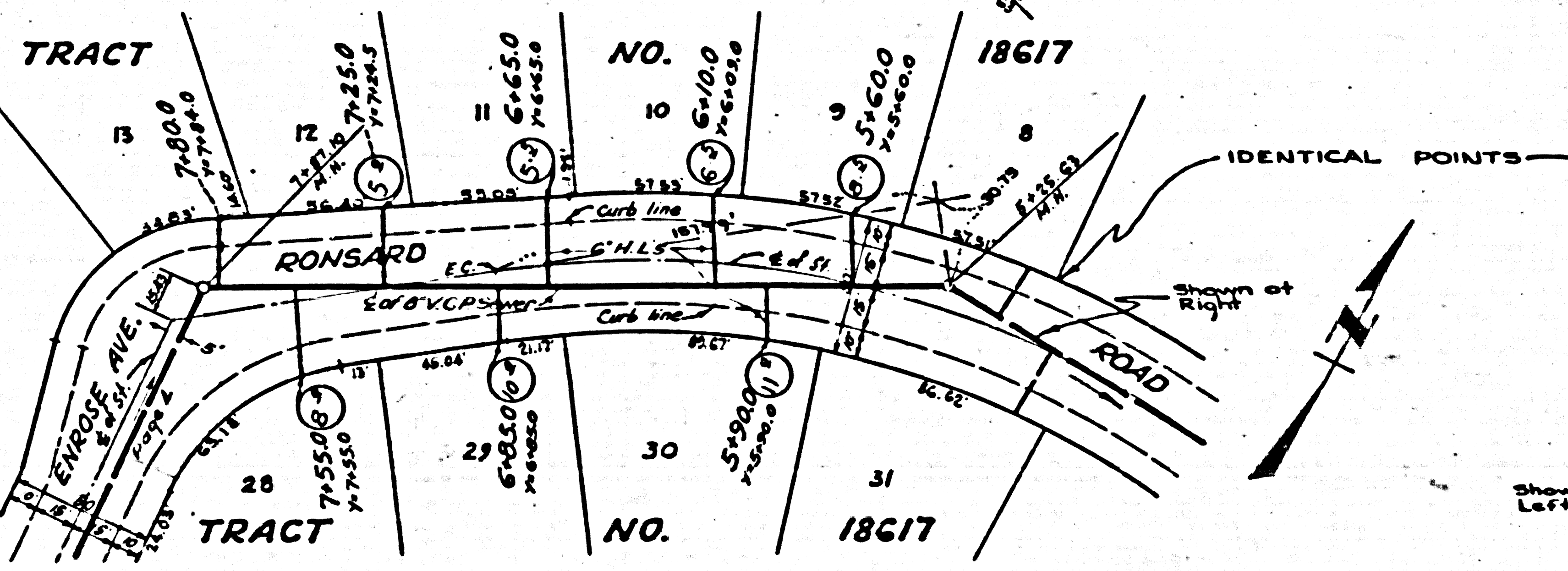


IDENTICAL



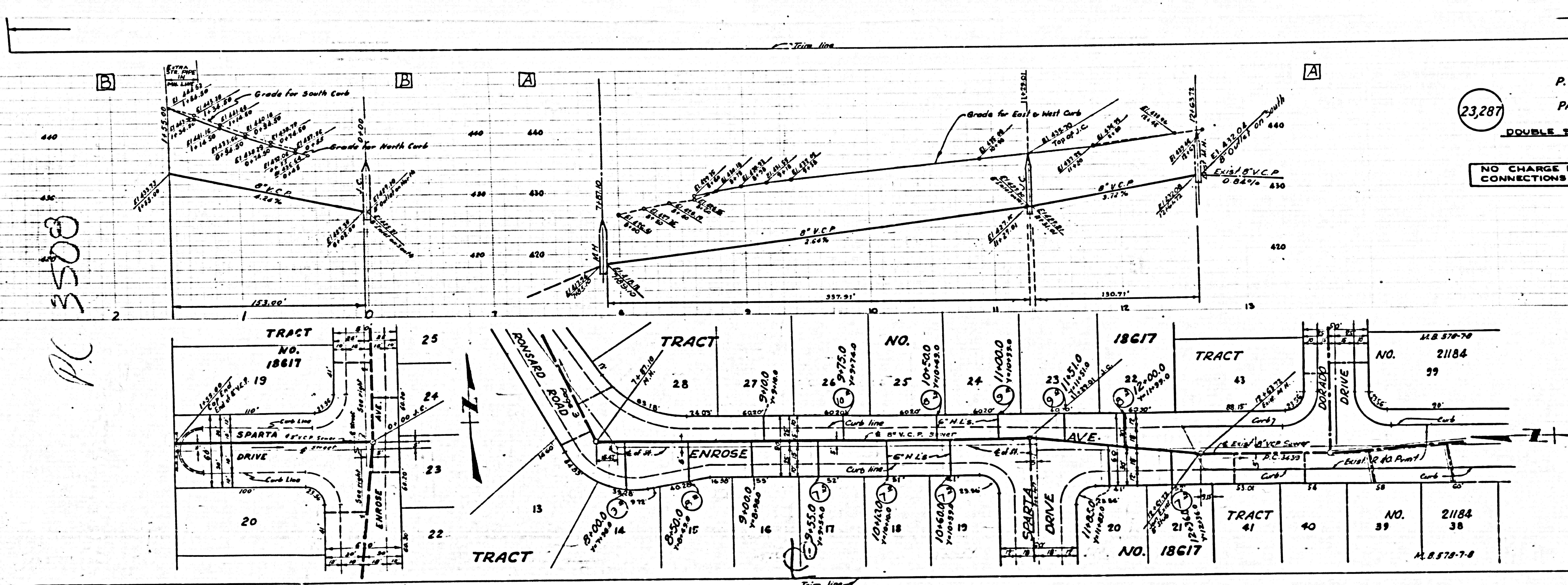
NO CHARGE FOR CONNECTIONS

23,286



Trim line

PC 3508



P.C. 3508
PAGE 4
DOUBLE SCALE
NO CHARGE FOR CONNECTIONS

23,287

Page from line