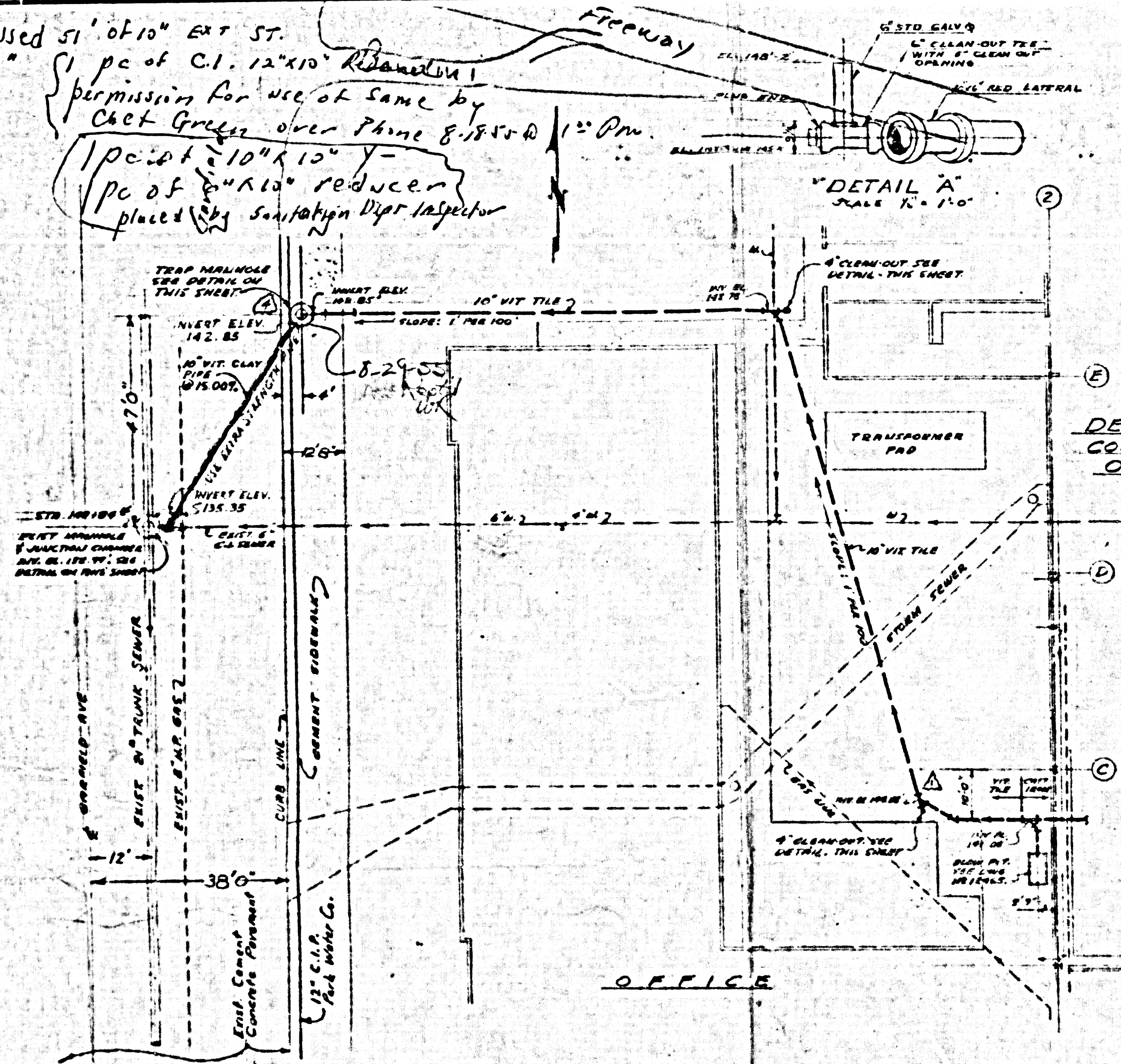
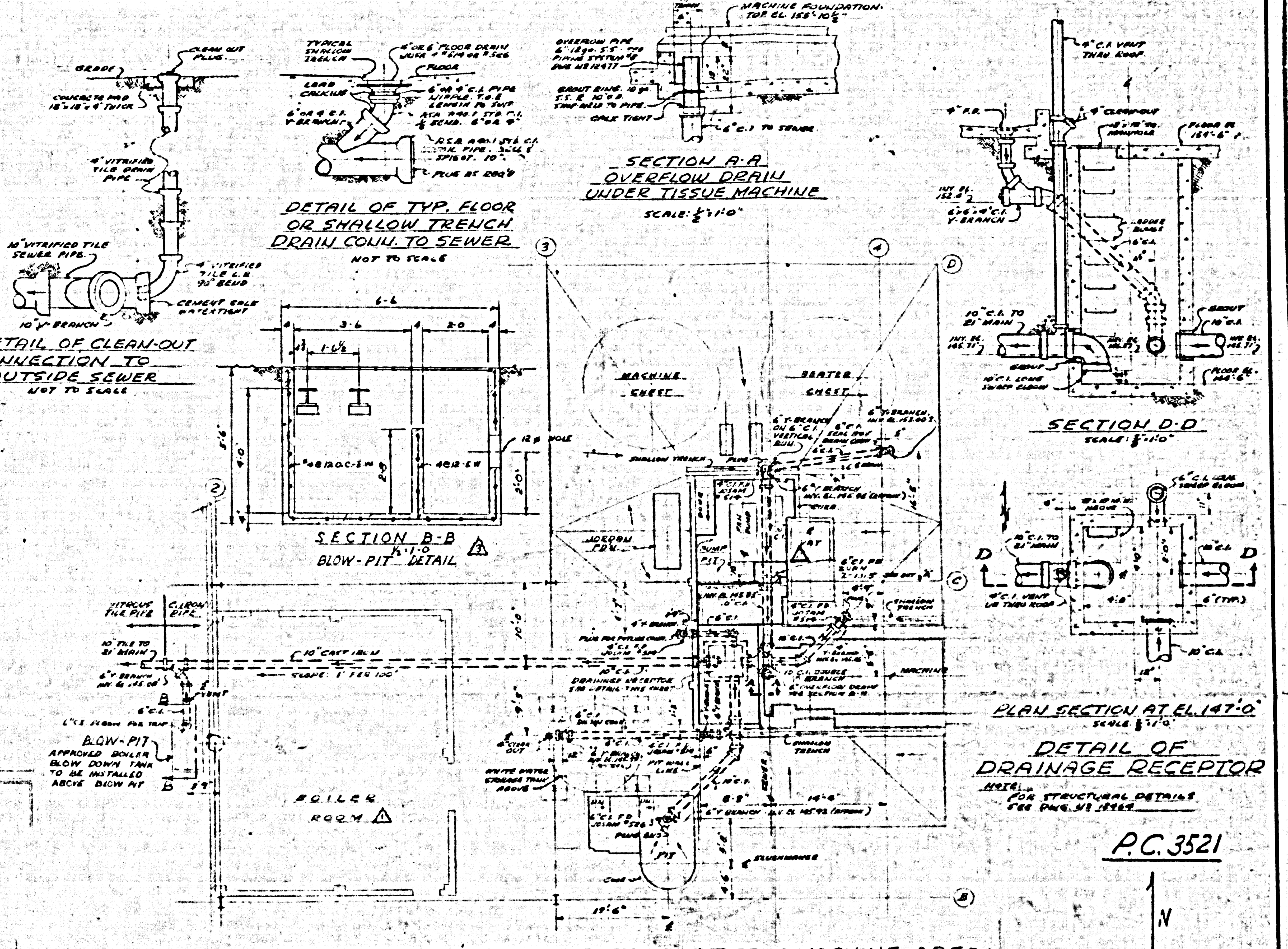


Used 51' of 10" EXT ST.  
 1 pc of C.I. 12"x10" Reduc'n  
 permission for use of same by  
 Chet Greer over phone 8-15-55 @ 1:00 pm  
 1 pc of 10"x10" Y-  
 pc of 4"x10" reducer  
 placed by Sanitation Dept Inspector



PLOT PLAN - OUTSIDE SEWER SYSTEM  
 SCALE: 1/4" = 1'-0"

P.C. 3521



FLOOR DRAINS & SEWER SYSTEM IN TISSUE MACHINE AREA  
 SCALE: 1/2" = 1'-0"

SEWER PLAN & DETAILS

THIS PROJECT ACCEPTED  
 AS A PUBLIC FACILITY  
 ON August 1955

APPROVED [Signature] DATE: 7/15/55  
 INDUSTRIAL WASTE ENGINEER

APPROVED BY A.M. RAWNS,  
 CHIEF ENGINEER OF LOS ANGELES  
 COUNTY SANITATION DISTRICT USE

BY [Signature] DATE: 8/1/55  
 DIVISION ENGINEER

P.C. 3521

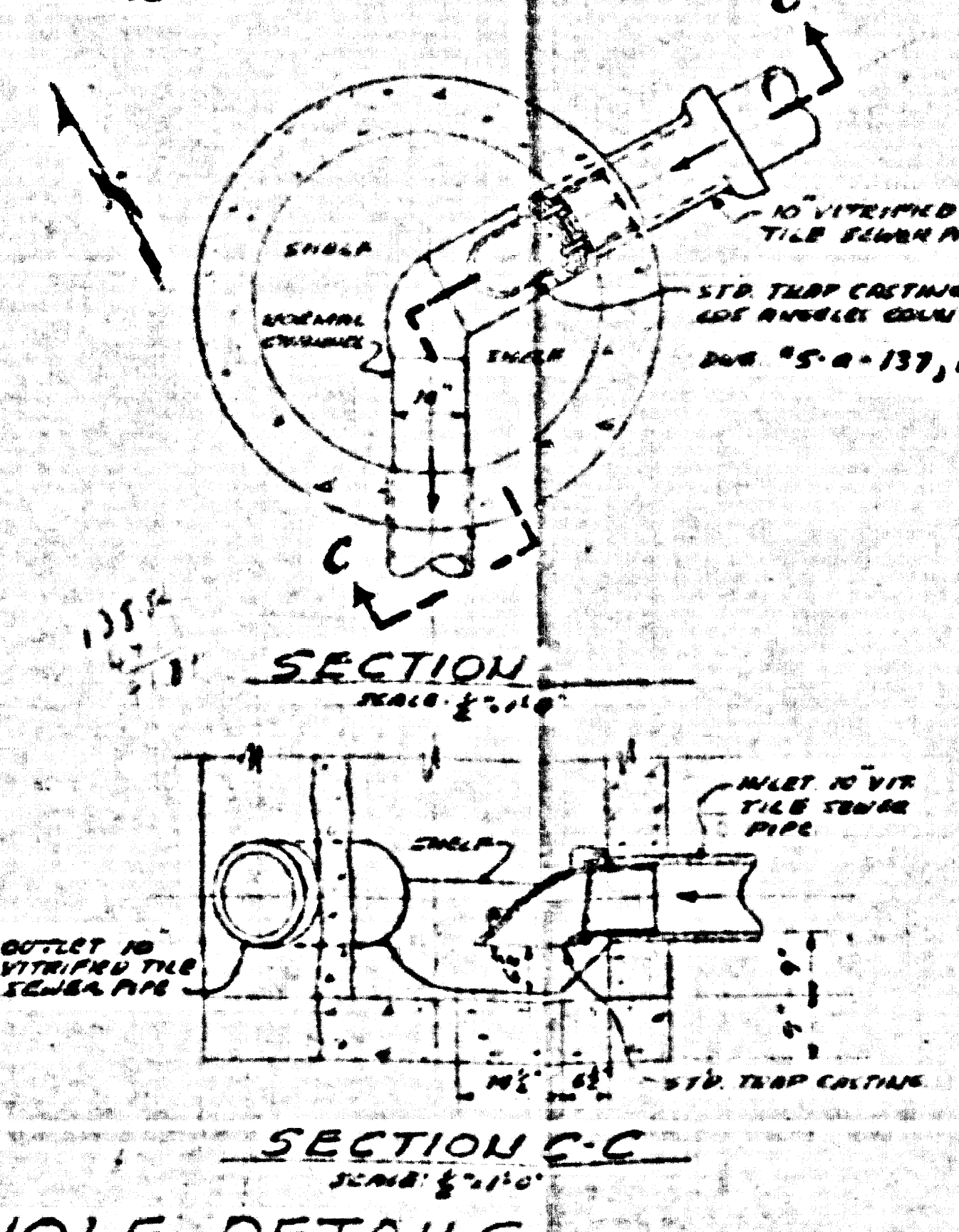
NO.	REVISIONS	DATE
1	REVISED TO SHOW	5-18-55
2	REVISED TO SHOW	5-18-55
3	REVISED TO SHOW	5-18-55
4	REVISED TO SHOW	5-18-55
5	REVISED TO SHOW	5-18-55

CROWN ZELLERBACH CORPORATION  
 CENTRAL ENGINEERING OFFICE  
 SEATTLE 5, WASHINGTON

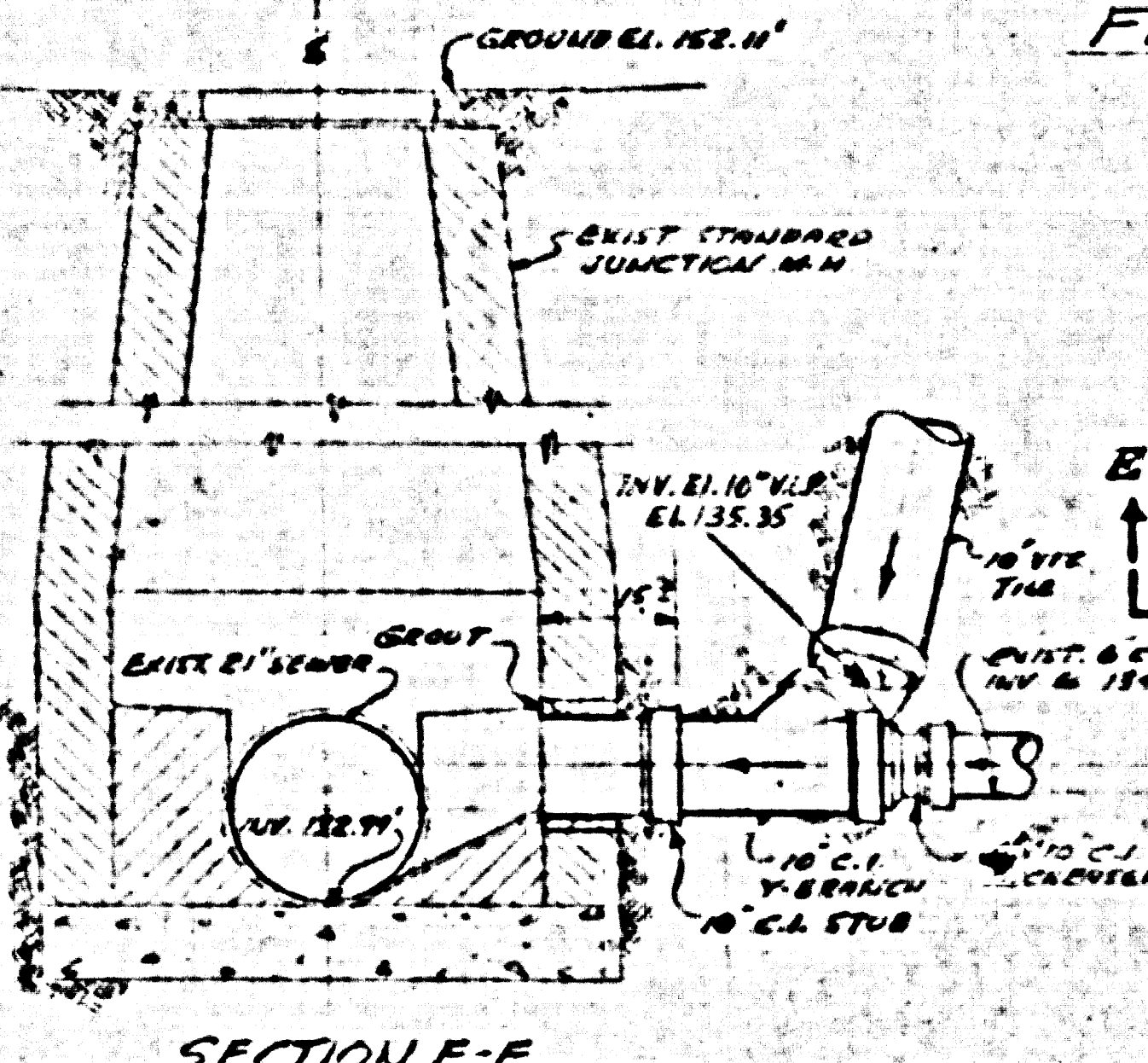
LOS ANGELES CONVERTING PLANT  
 DISTRIBUTION

JOB TITLE  
 91" TISSUE MACHINE

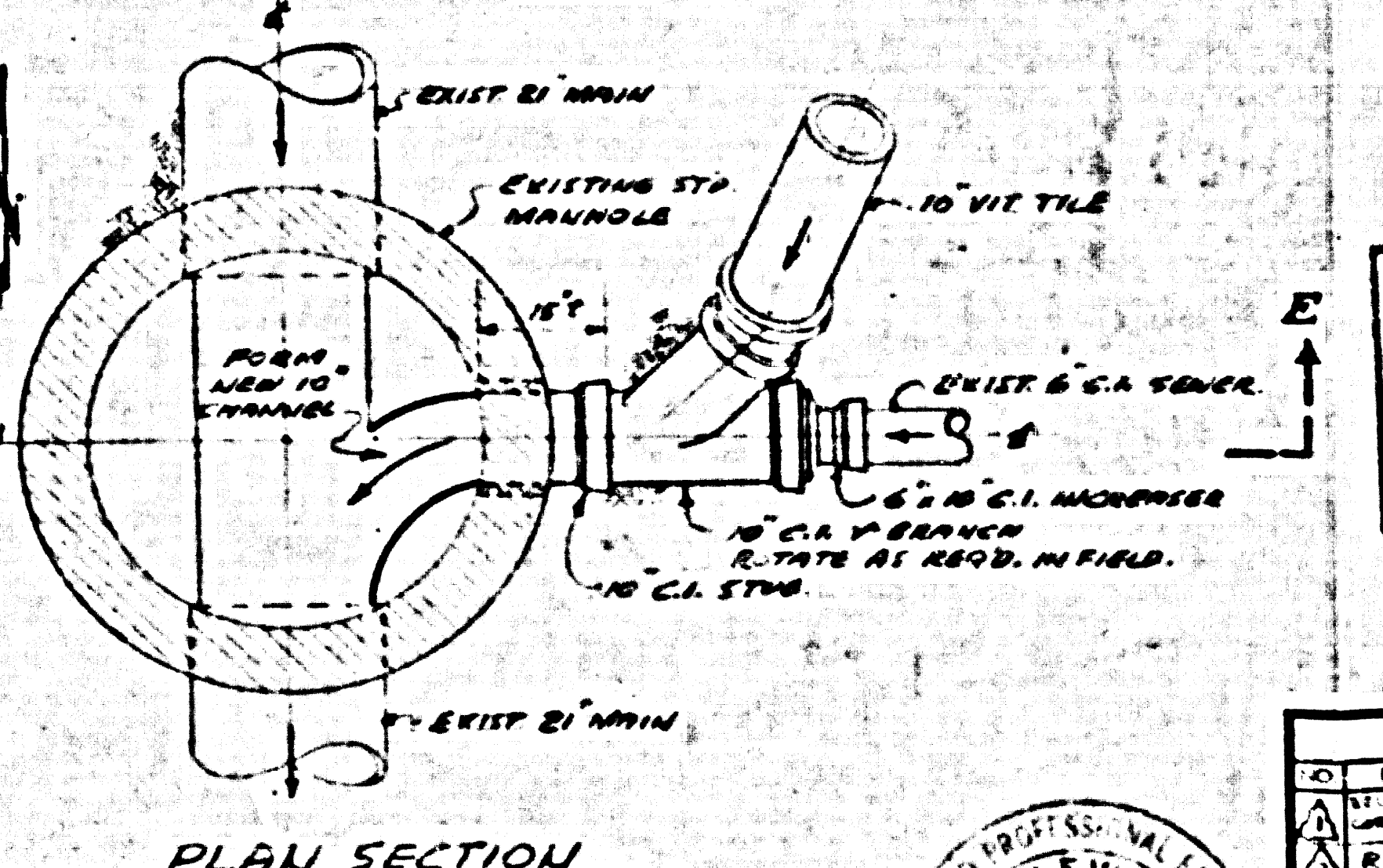
JOB NO. FILE NO. DRAWING NO.  
 LA200 883 12456



SECTION C-C  
 SCALE: 1/2" = 1'-0"



SECTION E-E  
 DETAIL OF CONN. TO EXIST.  
 JUNCTION MANHOLE  
 SCALE: 1/2" = 1'-0"



PLAN SECTION  
 SCALE: 1/2" = 1'-0"

COUNTY OF LOS ANGELES, CALIFORNIA  
 APPROVED [Signature] DATE: 6-24-55  
 ASST. SANITATION ENGINEER

TRAP MANHOLE DETAILS  
 SCALE: AT SHOWN

