

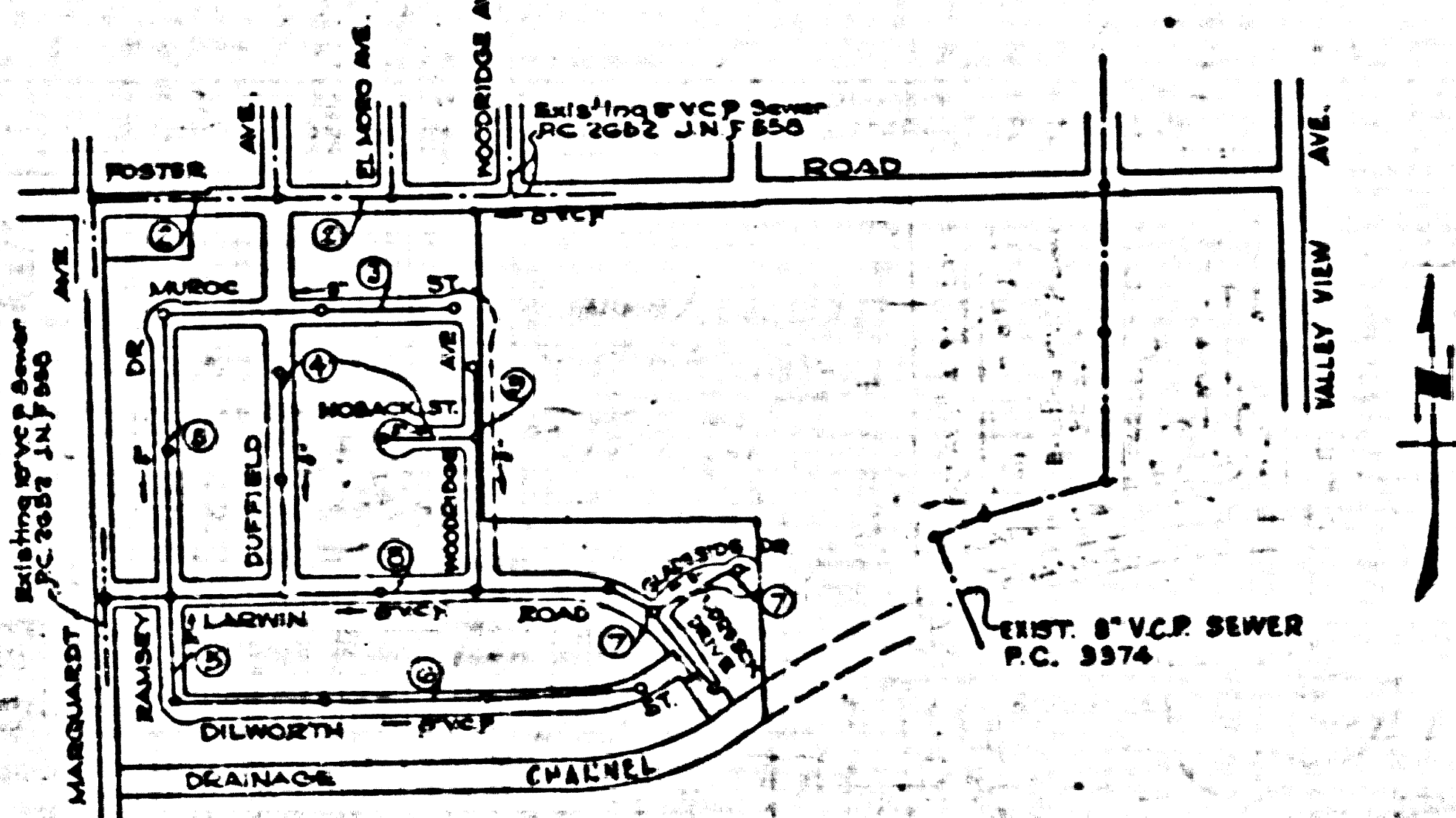
B.M. SY 2784, Fd L & T on Valley View Ave.  
 2' Intersection of Foster Rd. S by L & T of  
 2' L & T's 12' apart. Elev. = 56.500

- BELLFLOWER BLDG. DISTRICT No 4**
- NOTE:**  
 Provide stakes on the property lines or property lines produced at right angles to the cover line at the corner line of each manhole.  
 No revisions shall be made in these plans without the approval of the County Engineer.
1. Use standard manhole frames and covers, S-a-117.
  2. Use standard strength pipe except as noted.
  3. Use concrete mortar for all vitrified clay pipe joints.
  4. Resurface all trench within paved area to meet L.A. County Road Dept. or California State Highway Dept. requirements in accordance with permit.
  5. Encase four feet of sewer at points of interference with poles, S-a-119.
  6. House laterals to be constructed with inverts at property line \_\_\_\_\_ feet below curb grade except as noted.
  7. All structures shall be brick sewer structures, S-a-104.
  8. For allowable leakage test, use Formula No. \_\_\_\_\_ Spec's., Sec. 51.
  9. Manhole tops in unimproved Right-Of-Way to be 6" above finish grade.
  10. Number in circle at end of house lateral indicates depth below curb grade of property line. (75)

Sheet	Pages
1	1-5
2	6-9

Note: Figures in circles indicate Page Numbers

NO CHARGE  
 FOR CONNECTIONS  
*R. K. Kuban* 6-14-55



INDEX MAP  
 P.C. 3522 TRACT No 21791  
 SCALE 1"=400'

Checked 8-22-55 *M. H. ...*

PROFILE, ALIGNMENT AND GRADE OF  
**SANITARY SEWERS**  
 TO BE CONSTRUCTED IN

TRACT No 21791

PRIVATE CONTRACT NO. 3522  
 W. S. 34

2 SHEETS  
 Scale: VERT. 1"=4'  
 HORIZ. 1"=40'  
 MAY 1955

PREPARED IN THE OFFICES OF  
**A.G. ROSENTHAL & ASSOCIATES**  
*A. G. Rosenthal*  
 No. 611 N. DODD

FOR LEGEND SEE PLAN NO. S-a-64

**NOTE:**  
 Grades to which this improvement is to be constructed are shown on plans and profiles. Grade points for top of curb, center line of street, or center line of alleys are shown by circles on profiles. At all points between designated points the grade shall be established so as to conform to a straight line drawn between said designated points.  
 Elevations are in feet above U.S.G.S. datum or mean sea level.  
 This drawing and the data herein are hereby made a part of the specifications.  
 Work shall be constructed according to specifications on file in the office of the County Engineer and shall be prosecuted only in the presence of the County Engineer.  
 Before work can be started, the contractor must obtain a permit to encroach in County Street from the L.A. County Road Dept., 108 W. 2nd St., and make a deposit with the County Engineer, 524 S. B. Broadway, Los Angeles, sufficient to cover the cost of construction inspection and record there.  
 Approval of this plan by the County of Los Angeles does not constitute a representation as to the accuracy of the location of or the existence or non-existence of any underground utility, pipe, or structure within the limits of the project. This note applies to all sheets.  
 If work is to be done in a State Highway, a permit shall be obtained from the State of California, Division of Highways, 120 South Spring Street.  
**COUNTY OF LOS ANGELES, CALIFORNIA**  
 Approved, William J. Fox, County Engineer  
*A. P. Collins*  
 Checked by: *R. K. Kuban* 6-14-55  
 Office of County Engineer, Dep. G. & B., 2860

P.C. 3522  
 PAGE 1

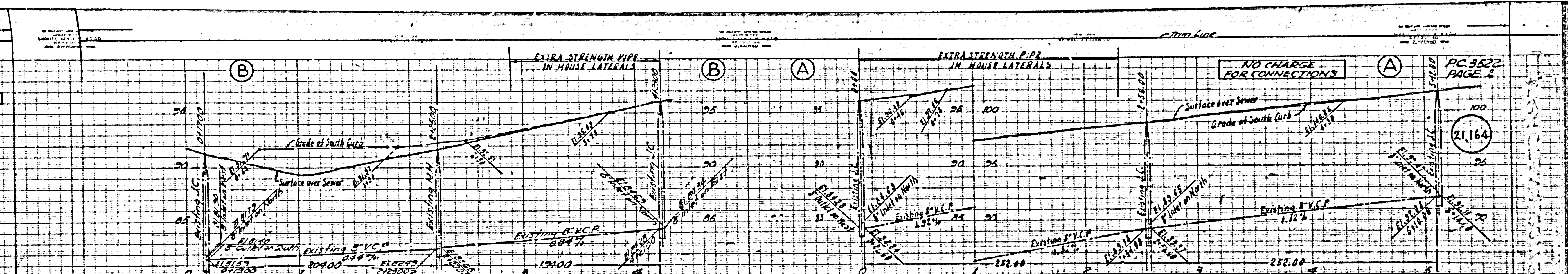
21,163

TRACT No 21791

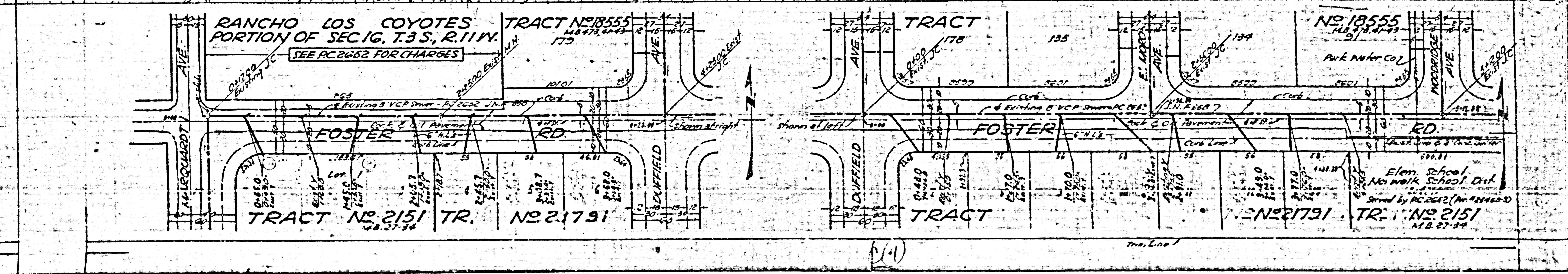
P.C. 3522  
 SHEET 1

*R. K.*





PC 3522  
PAGE 2

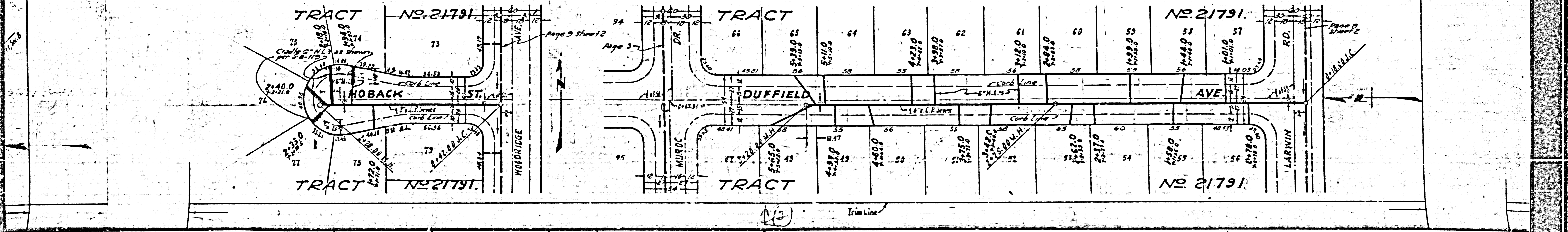
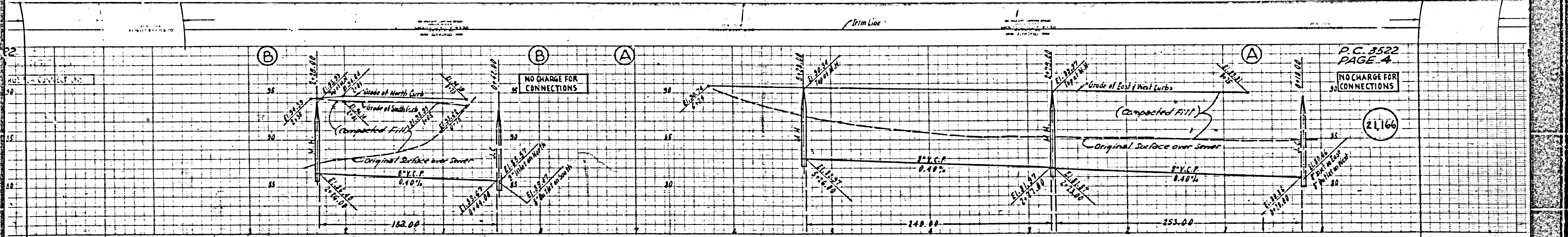


(1)













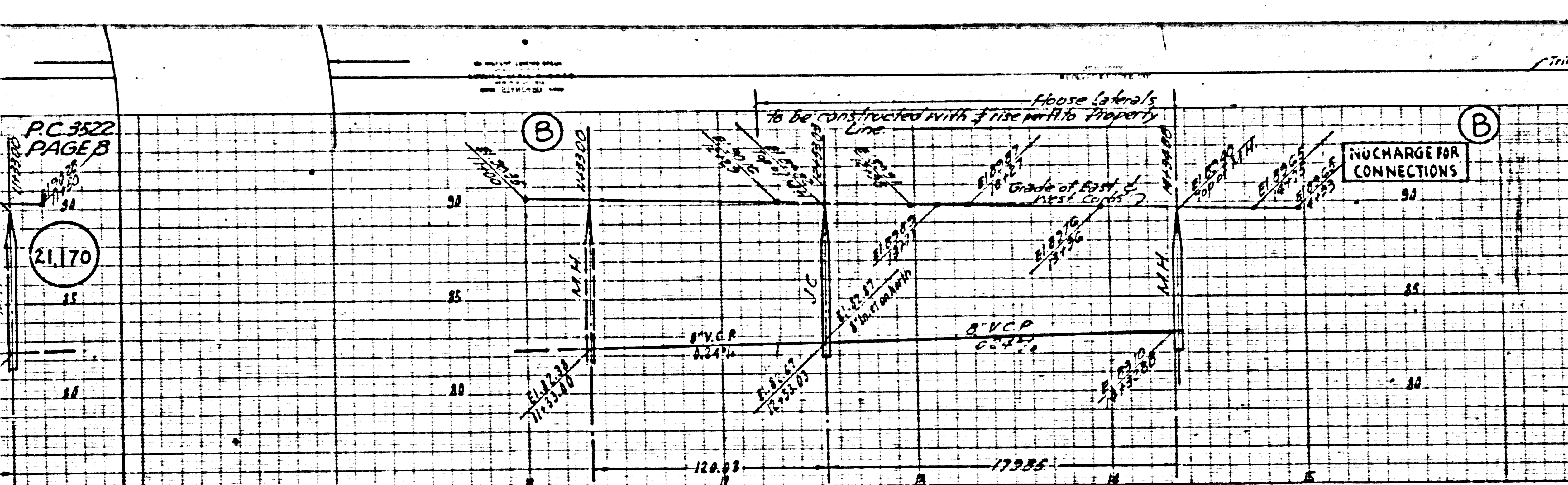






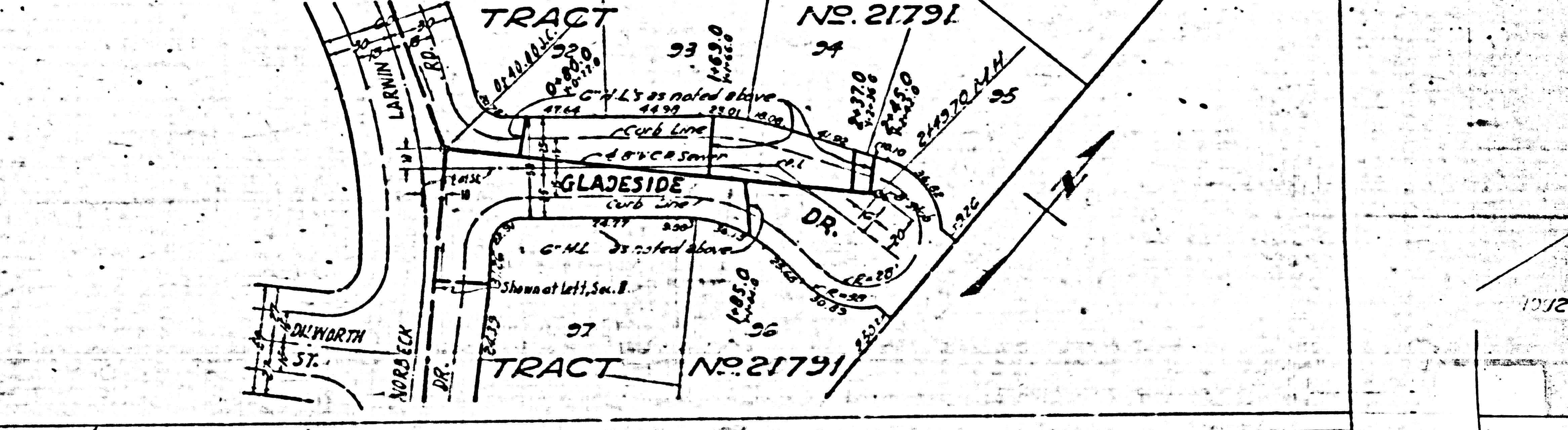
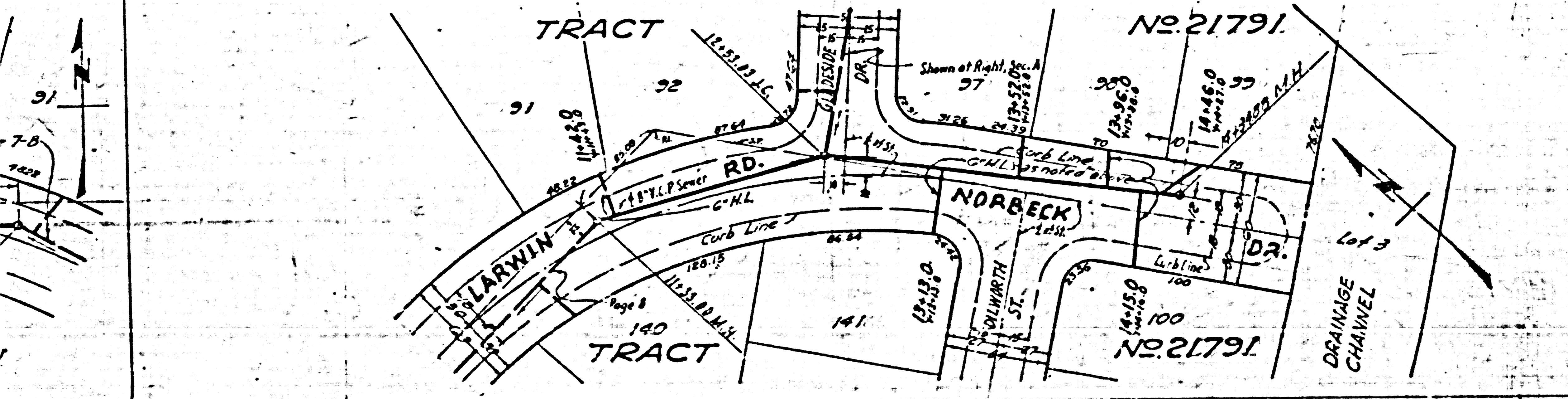
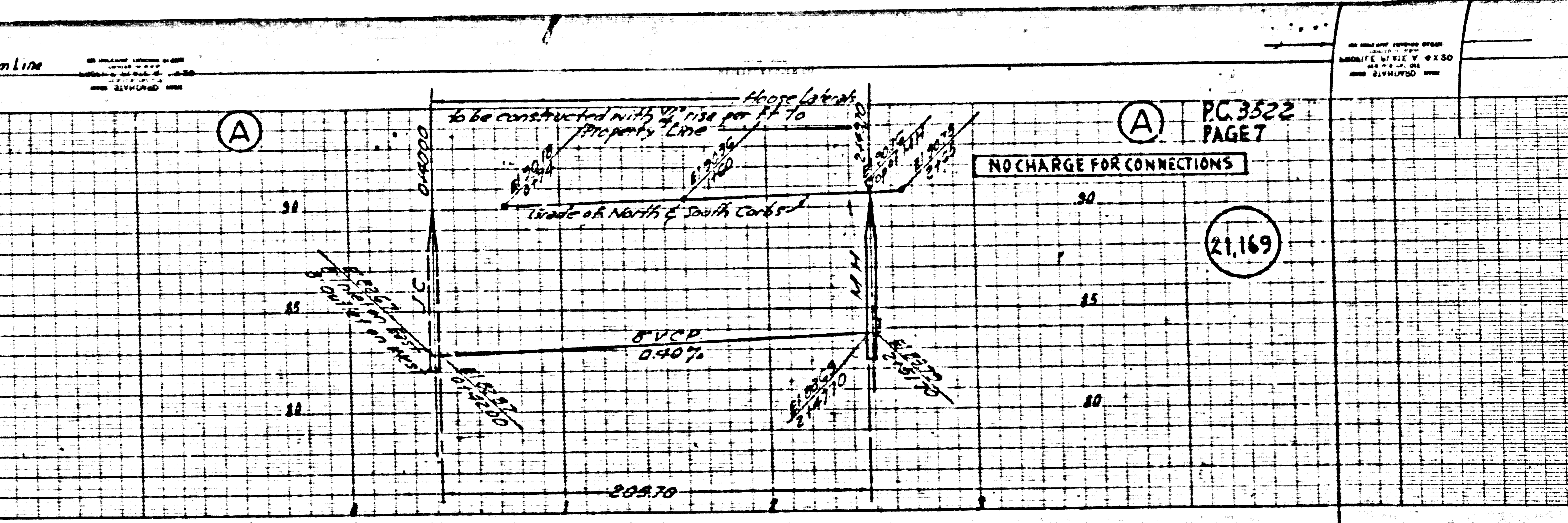
PC 3522  
PAGE B

21,170



PC 3522  
PAGE T

21,169



Trim Line



PC 3522  
PAGE 9

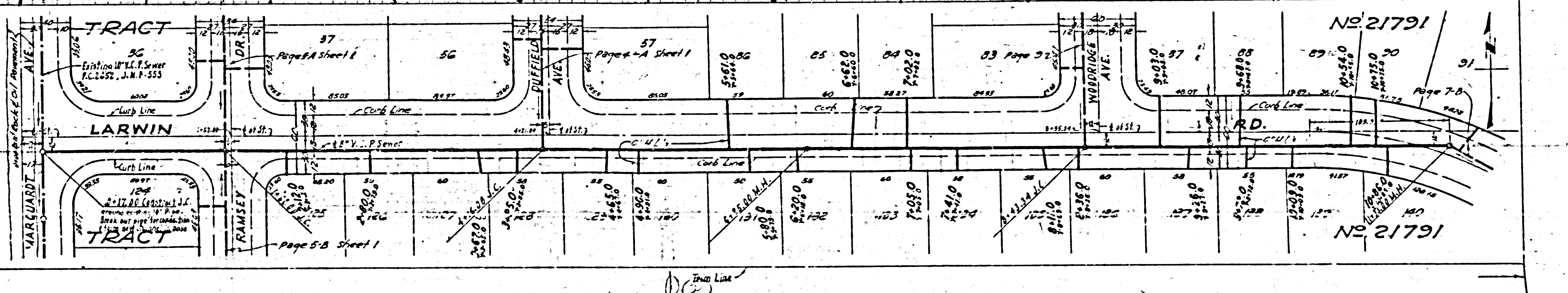
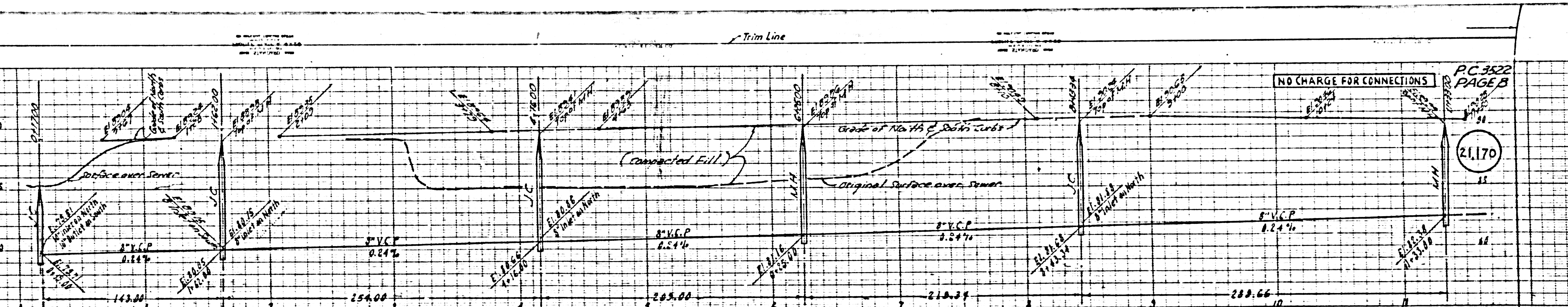
NO CHARGE FOR CONNECTIONS

21,171

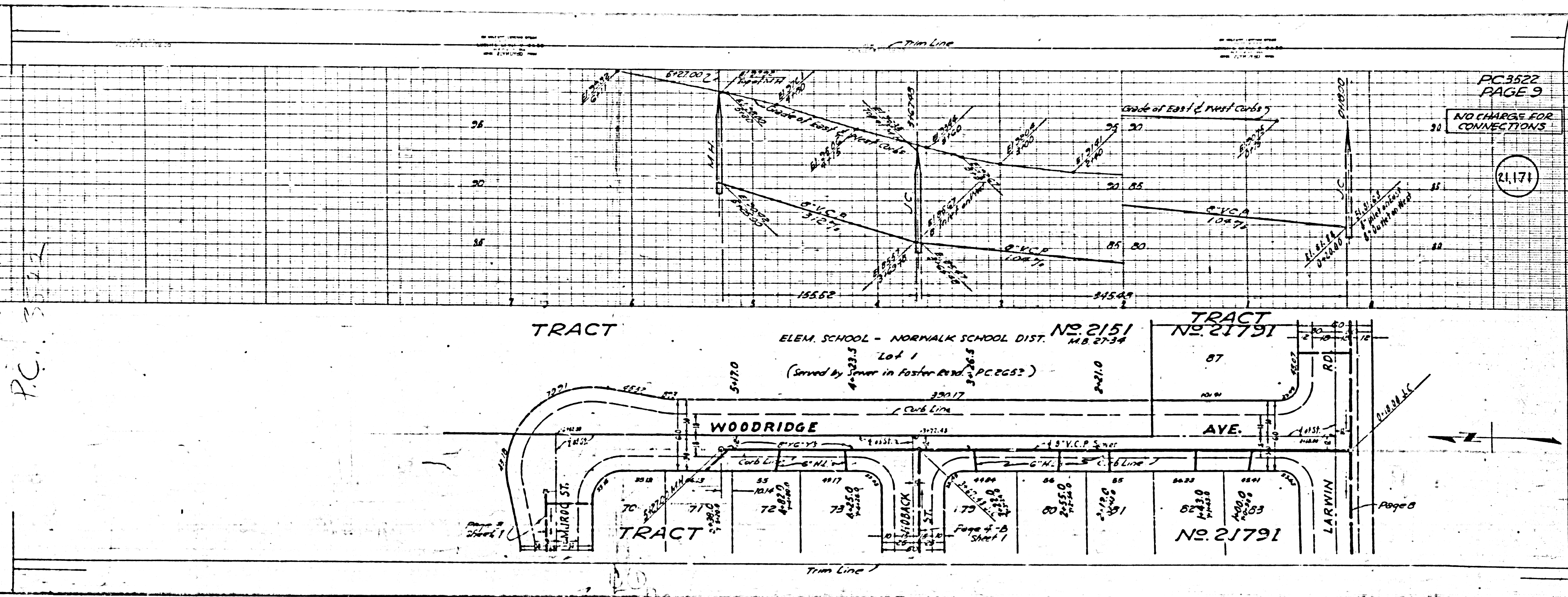
PC 3522  
PAGE B

NO CHARGE FOR CONNECTIONS

21,170







P.C. 3522  
PAGE 9

NO CHARGE FOR CONNECTIONS

21,171

P.C. 3522

Page 8