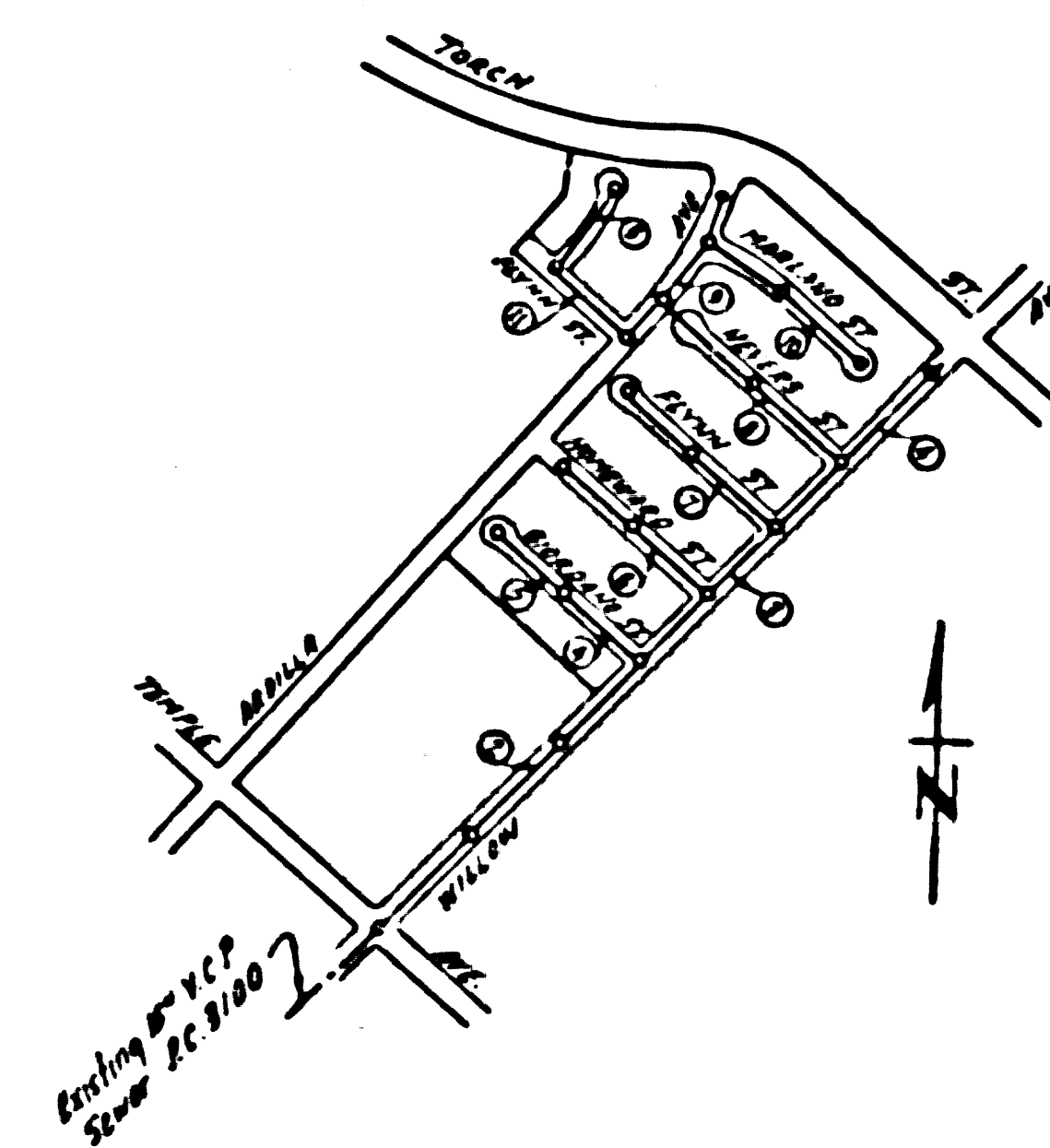


PUENTE BLDG DIST. NO 2

- NOTE:**
 Provide stakes on the property lines or property lines produced at right angles to the sewer line at the center line of each manhole.
 No representative of the County Engineer will survey or layout any portion of the work.
 The owner or his authorized representative shall furnish the County Engineer with grade sheets and stations for all house laterals and Y branches and shall provide stakes for them at their proper locations with stationing plainly marked. Any change in location shall be requested in writing by the owner or his representative.
 No revisions shall be made in these plans without the approval of the County Engineer.
1. Use standard manhole frames and covers, S-a-117.
 2. Use standard strength pipe except as noted.
 3. Use cement mortar for all vitrified clay pipe joints.
 4. Resurface all trench within paved area to meet L.A. County Road Dept. or California State Highway Dept. requirements in accordance with permit.
 5. Encase four ft of sewer at points of interference with poles, S-a-119.
 6. House laterals to be constructed with inverts at property line $\frac{1}{2}$ feet below curb grade except as noted.
 7. All structures shall be brick sewer structures, S-a-104.
 8. For allowable leakage test, use Formula No. 7, Spec's, Sec. 51.
 9. Manhole tops in unimproved Rights-Of-Way to be 6" above finish grade.

B.M. 50 1085 Elev. 4314.30
 Lead and Brass nail in S.E. corner of
 concrete base of Run 1080-05' 2 1/2' of E
 of Torch St and 85' 6" W. of E. of North Ave.



SHEET	AGES
1	1-4
2	5-8
3	9-11

COLLECT CHARGES
 AS INDICATED
 R.S. 6-1-55

INDEX MAP
 P.C. 3523
 SCALE 1"=600'
 TRACT 20531

Sealed 8-10-55 H. L. ...

P.C. 3523
 PAGE 1

PROFILE, ALIGNMENT AND GRADE OF
 SANITARY SEWERS
 TO BE CONSTRUCTED IN
TRACT NO 20531

PRIVATE CONTRACT NO. 3523
 W. S. 46
 3 SHEETS

Scale: VERT. 1"=4'
 HORIZ. 1"=40'
 APRIL 1955
 PREPARED IN THE OFFICES OF
HAROLD M. TEGART
 Reg. C. E. No. 2151

FOR LEGEND SEE PLAN NO. S-a-64

NOTE:
 Grades to which this improvement is to be constructed are shown on plans and profiles. Grade points for top of curbs, center line of streets, or center line of alleys are shown by circles on profiles. At all points between designated points the grade shall be established so as to conform to a straight line drawn between said designated points.
 Elevations are in feet above U.S.G.S. datum or mean sea level.
 This drawing and the data hereon are hereby made a part of the specifications.
 Work shall be constructed according to specifications on file in the office of the County Engineer and shall be prosecuted only in the presence of the County Engineer.
 Before work can be started, the contractor must obtain a permit to excavate in County streets from the L.A. County Road Dept., 108 W. 2nd St. and make a deposit with the County Engineer, 255 S. Grandditching, \$10,000 sufficient to cover the cost of construction inspection and record plans.
 Approval of this plan by the County of Los Angeles does not constitute a representation as to the accuracy of the location of or the existence or non-existence of any underground utility, pipe, or structure within the limits of this project. This note applies to all sheets.
 If work is to be done in a State Highway, a permit must be obtained from the State of California, Division of Highways, 120 South Spring Street.

COUNTY OF LOS ANGELES, CALIFORNIA
 Approved, William J. Fox, County Engineer
 Approved, A. M. Raven
 CHIEF ENGR. CO. SAN. DIST. NO. 15
 A. M. Raven
 6-1-55
 Office of County Engineer, Reg. C. E. No. 7860

21,060

55232

9/24

C. 3523
PAGE 3

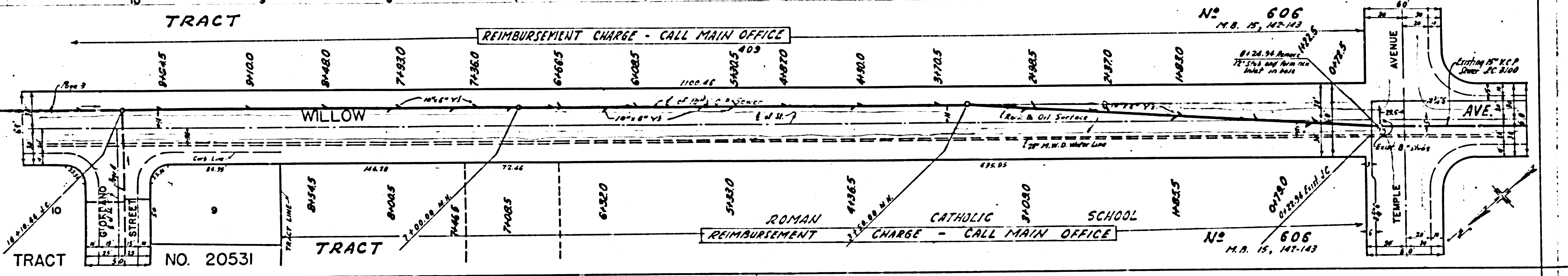
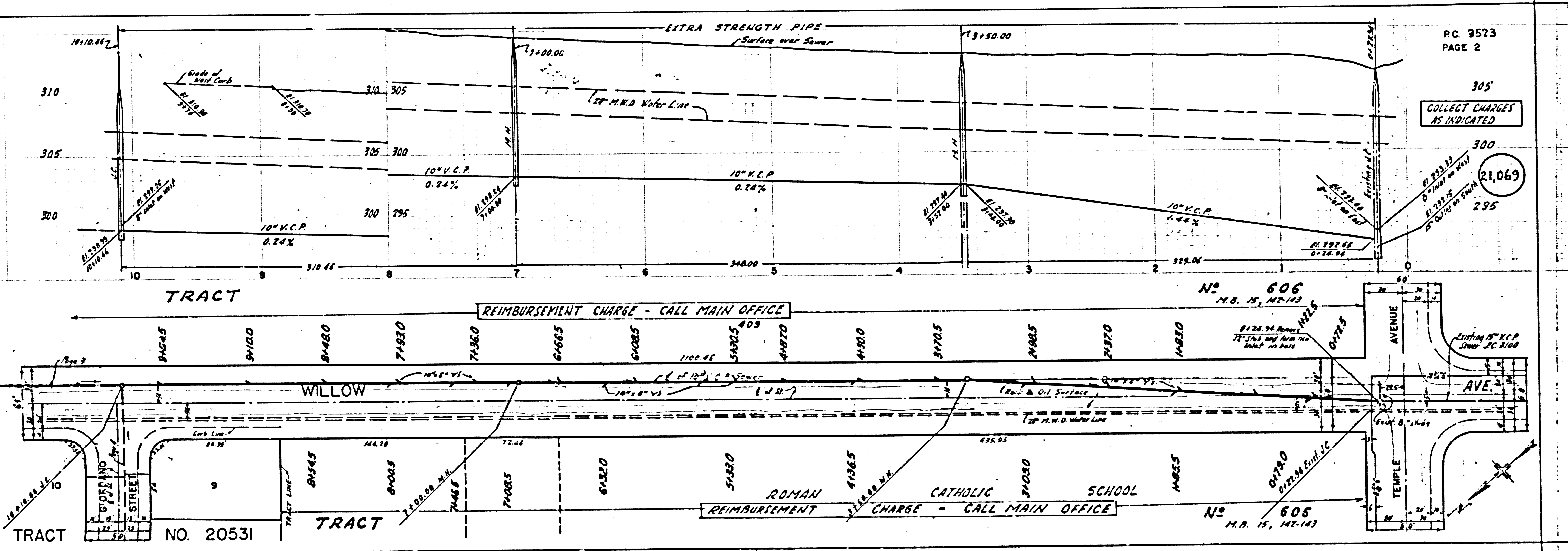
CHARGES
INDICATED

21,070

P.C. 3523
PAGE 2

COLLECT CHARGES
AS INDICATED

21,069



A P.C. 3523
PAGE 4

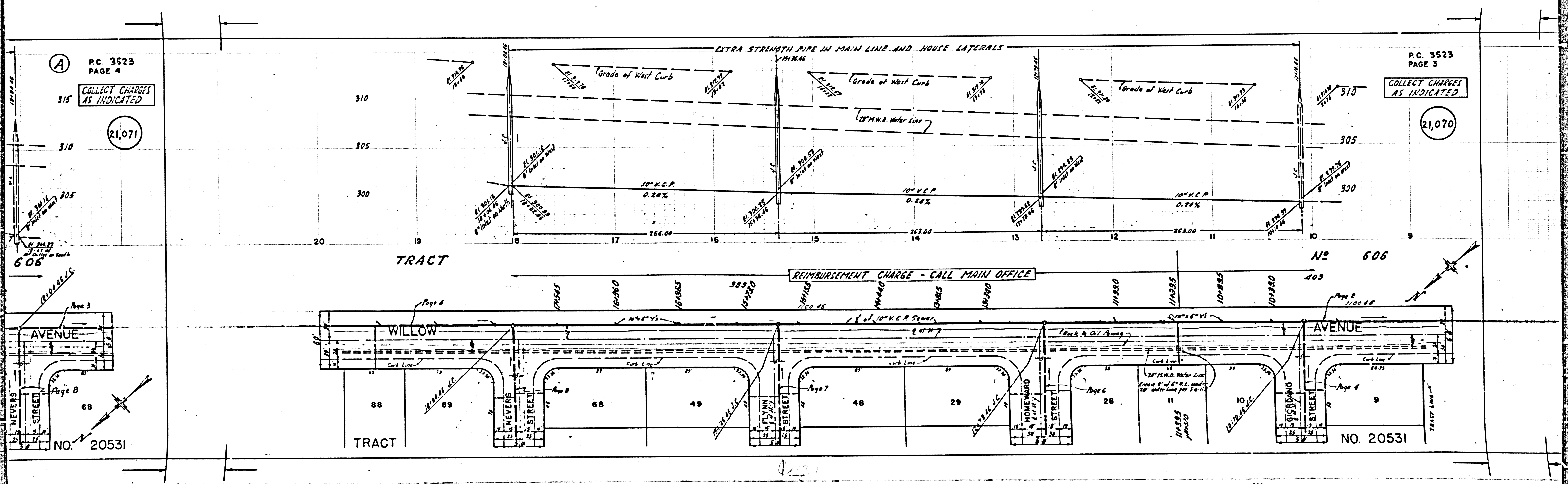
COLLECT CHARGES
AS INDICATED

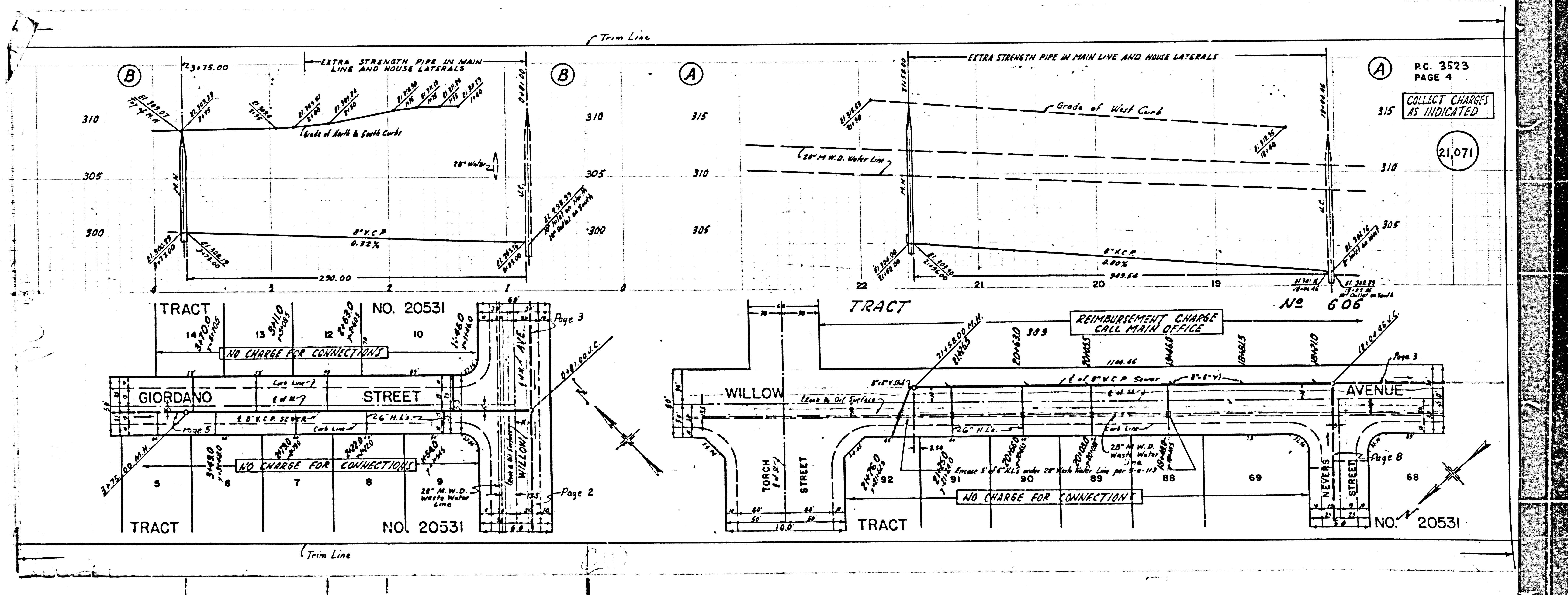
21,071

P.C. 3523
PAGE 3

COLLECT CHARGES
AS INDICATED

21,070





P.C. 3523
PAGE 6

310

NO CHARGE FOR CONNECTIONS

305

300

21,073

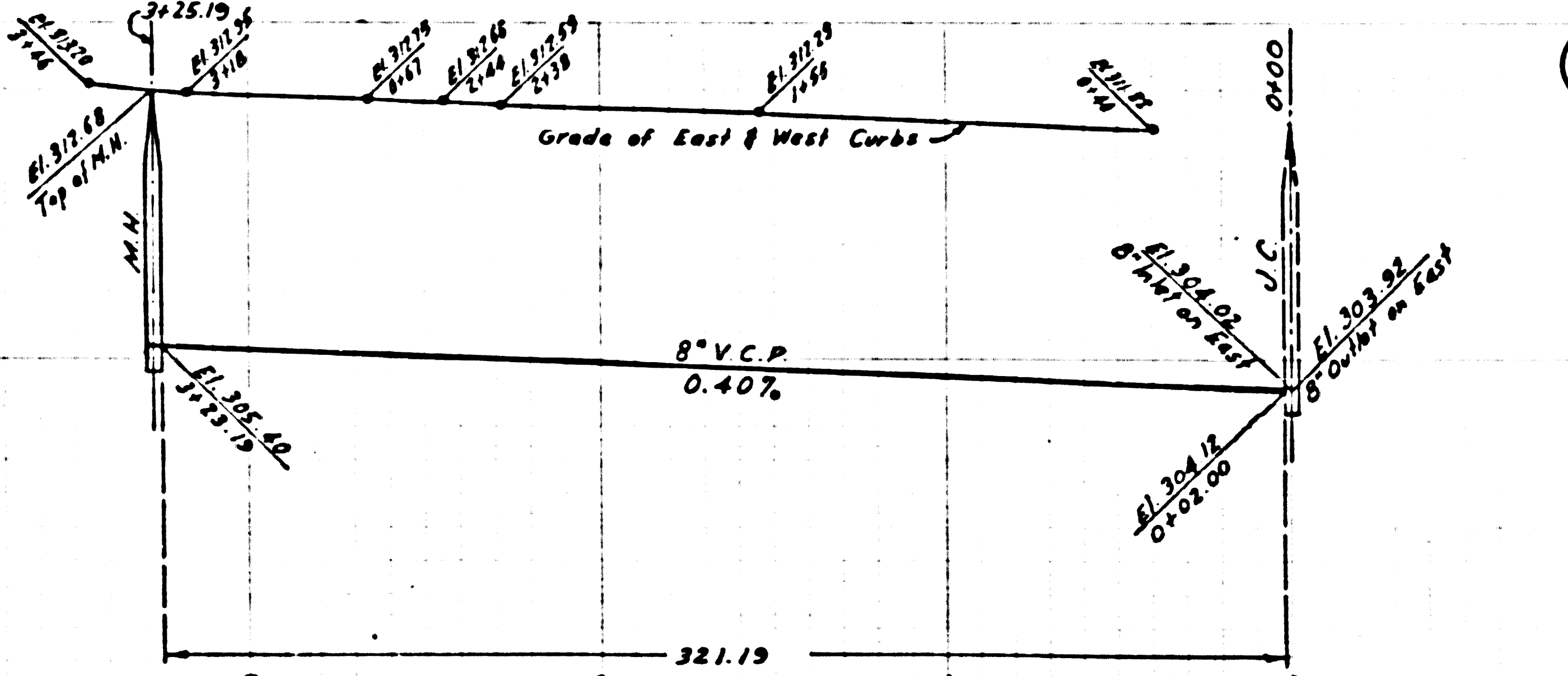
(B)

310

305

300

Trim Line



(B)

310

305

300

(A)

310

305

300

P.C. 3523
PAGE 5

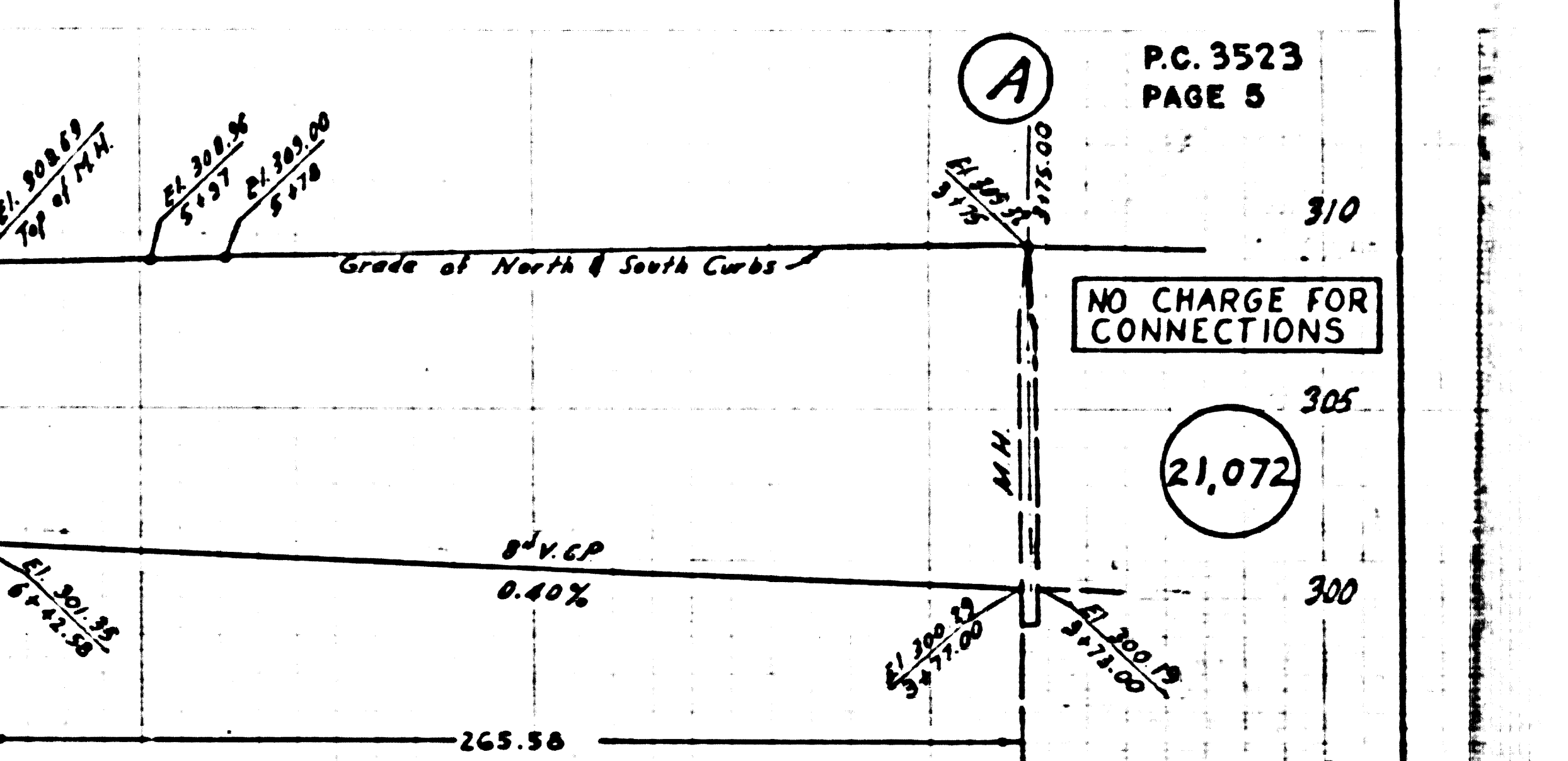
310

305

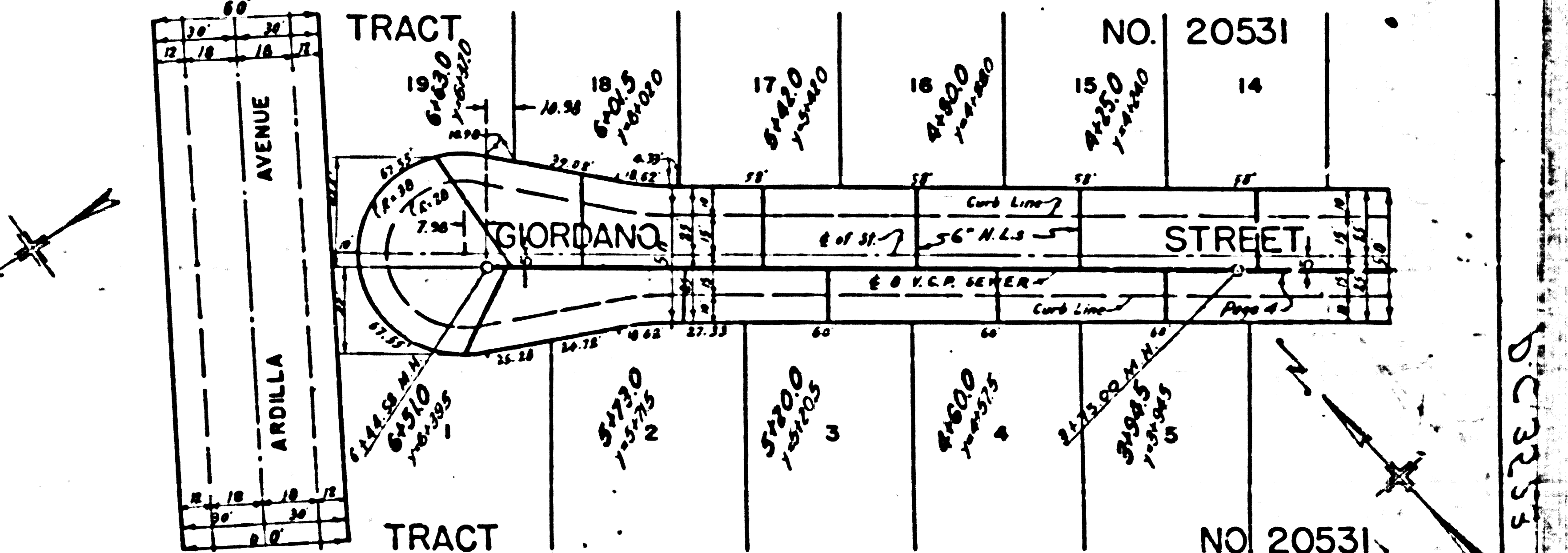
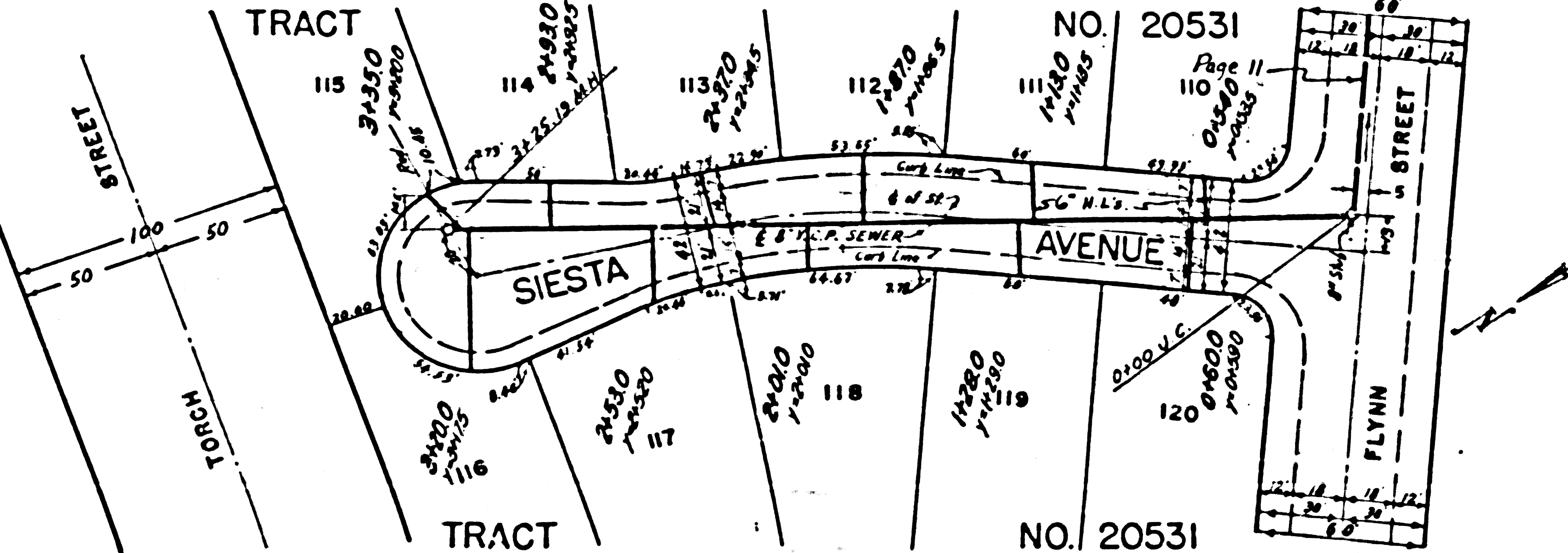
300

21,072

NO CHARGE FOR CONNECTIONS



Page 3



P.C. 3523

P.C. 3523
PAGE 7

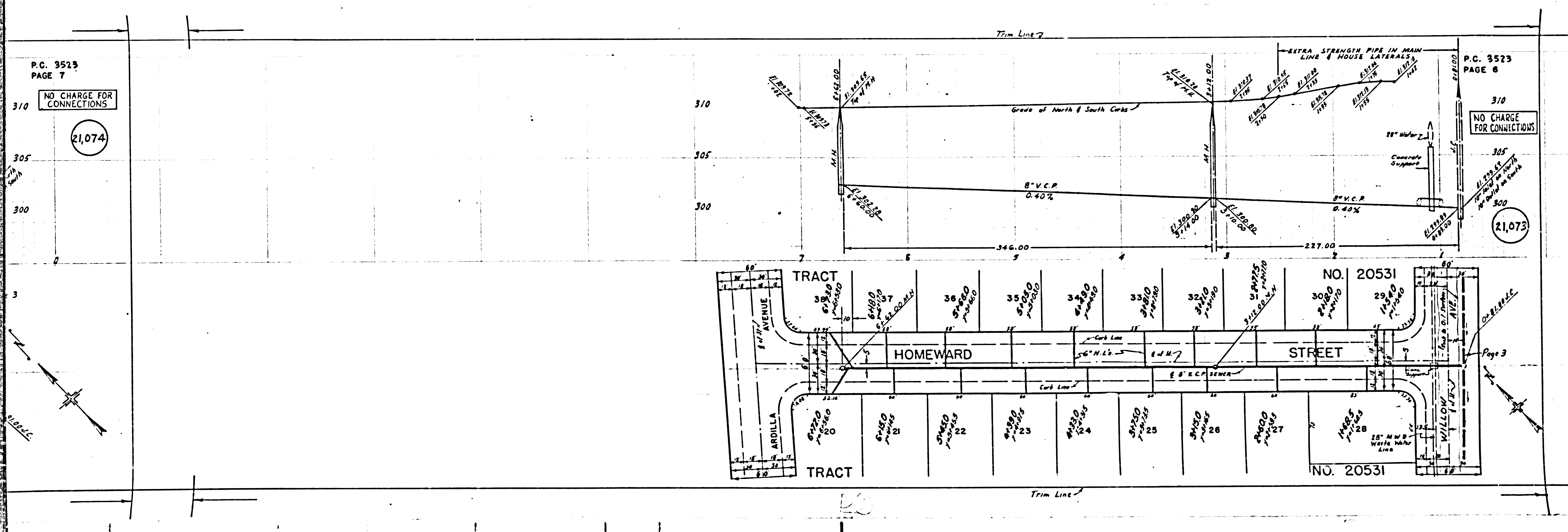
NO CHARGE FOR CONNECTIONS

21,074

P.C. 3523
PAGE 8

NO CHARGE FOR CONNECTIONS

21,073



Trim Line

Grade of North & South Curbs

8" V.C.P. 0.40%

EXTRA STRENGTH PIPE IN MAIN LINE & HOUSE LATERALS

28" Water

Concrete Support

TRACT

TRACT

HOMEWARD STREET

STREET

NO. 20531

NO. 20531

Page 3

Trim Line

P.C. 3523
PAGE 8

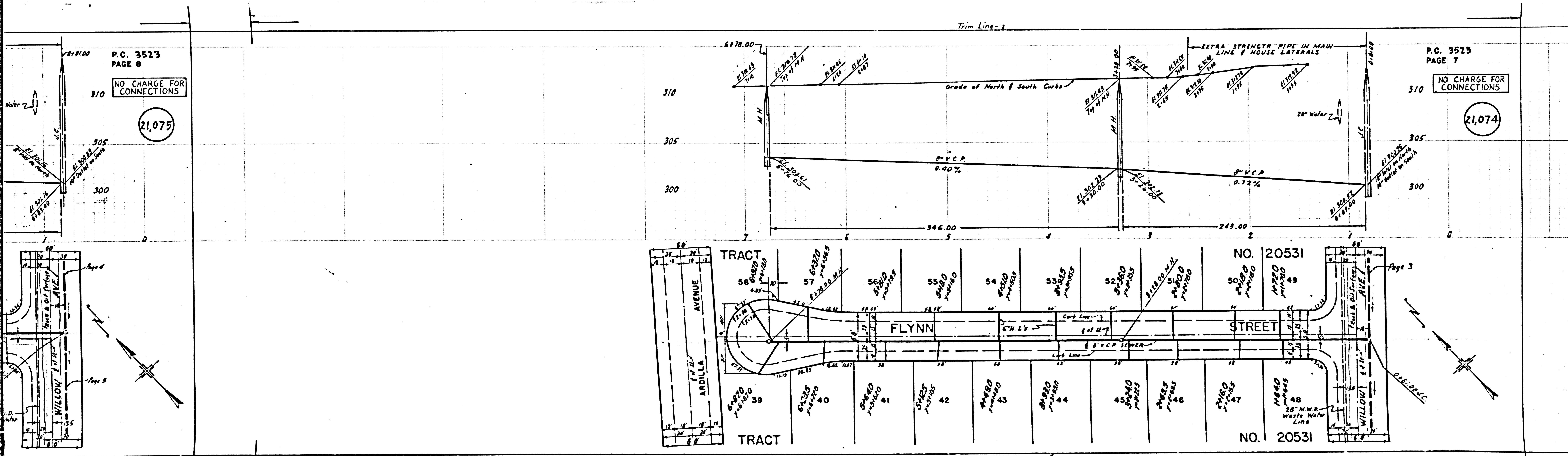
NO CHARGE FOR
CONNECTIONS

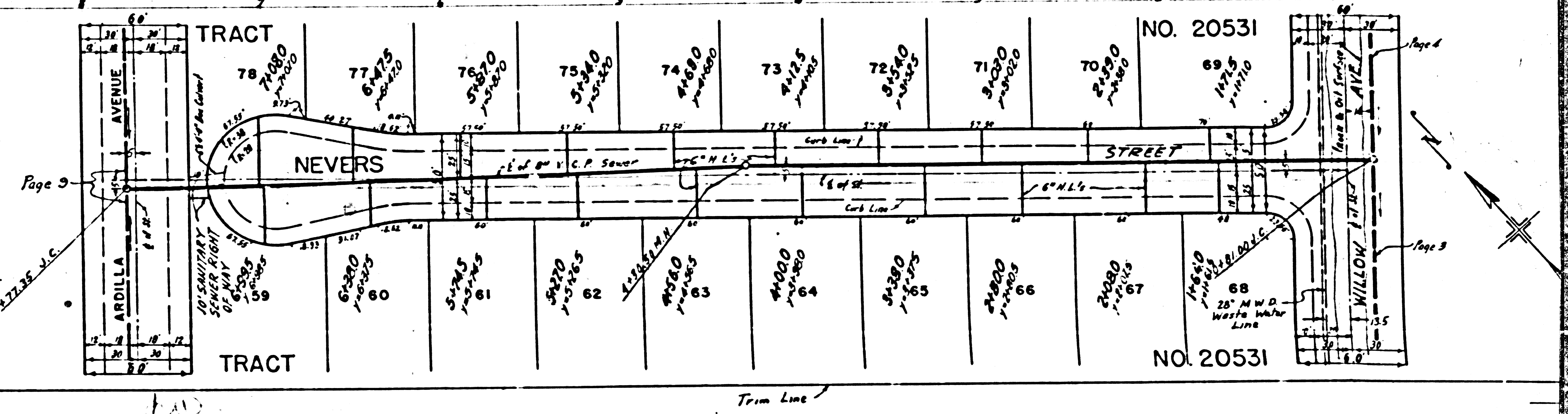
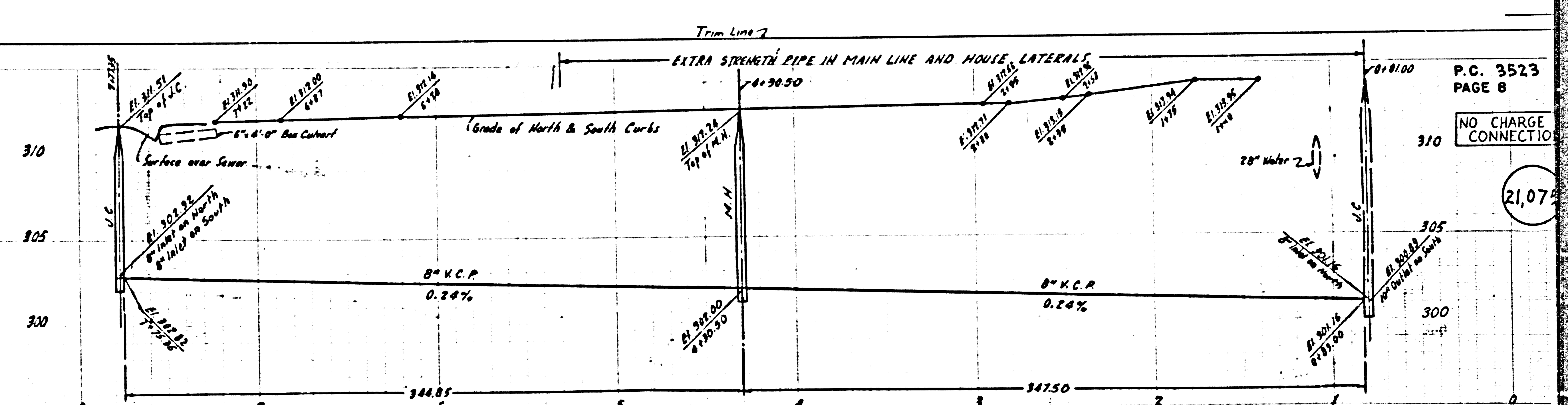
21,075

P.C. 3523
PAGE 7

NO CHARGE FOR
CONNECTIONS

21,074



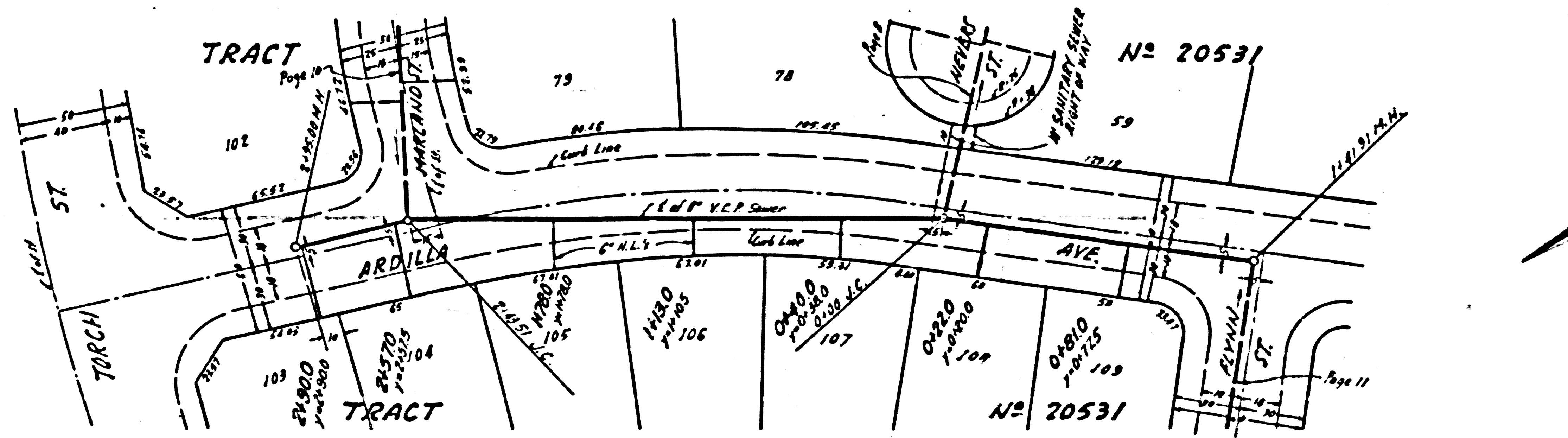
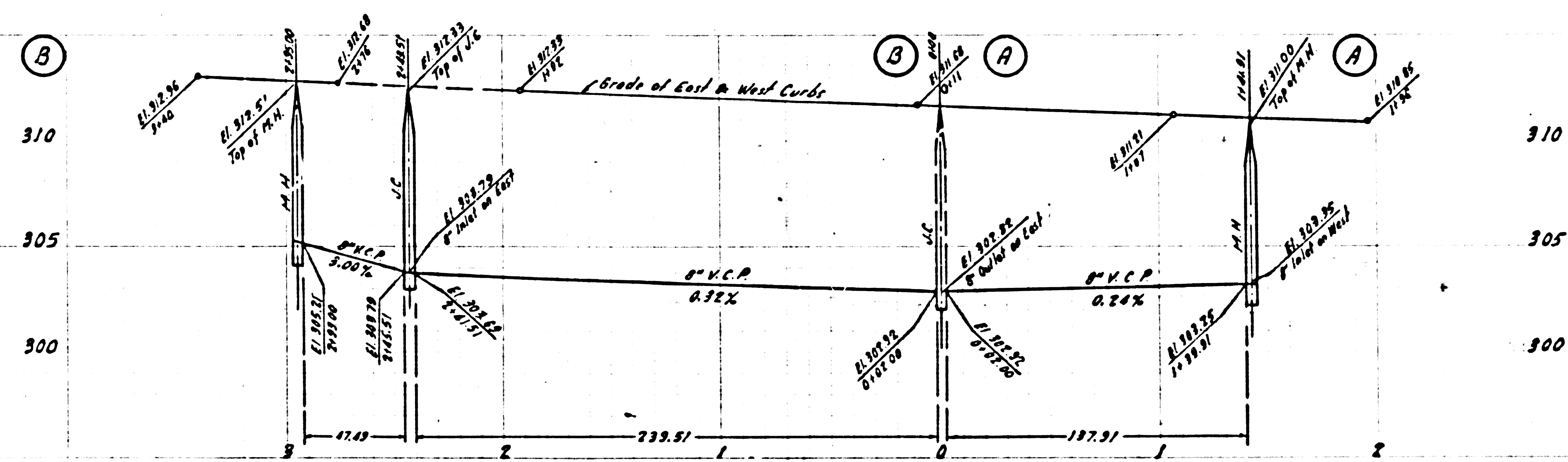


NO CHARGE
FOR CONNECTION

21,077

NO CHARGE
FOR CONNECTIONS

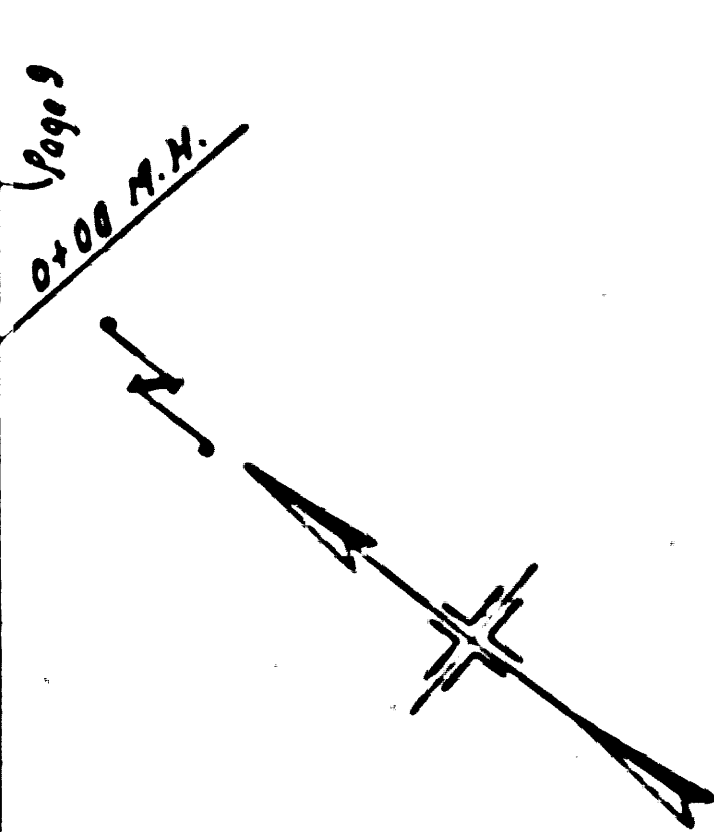
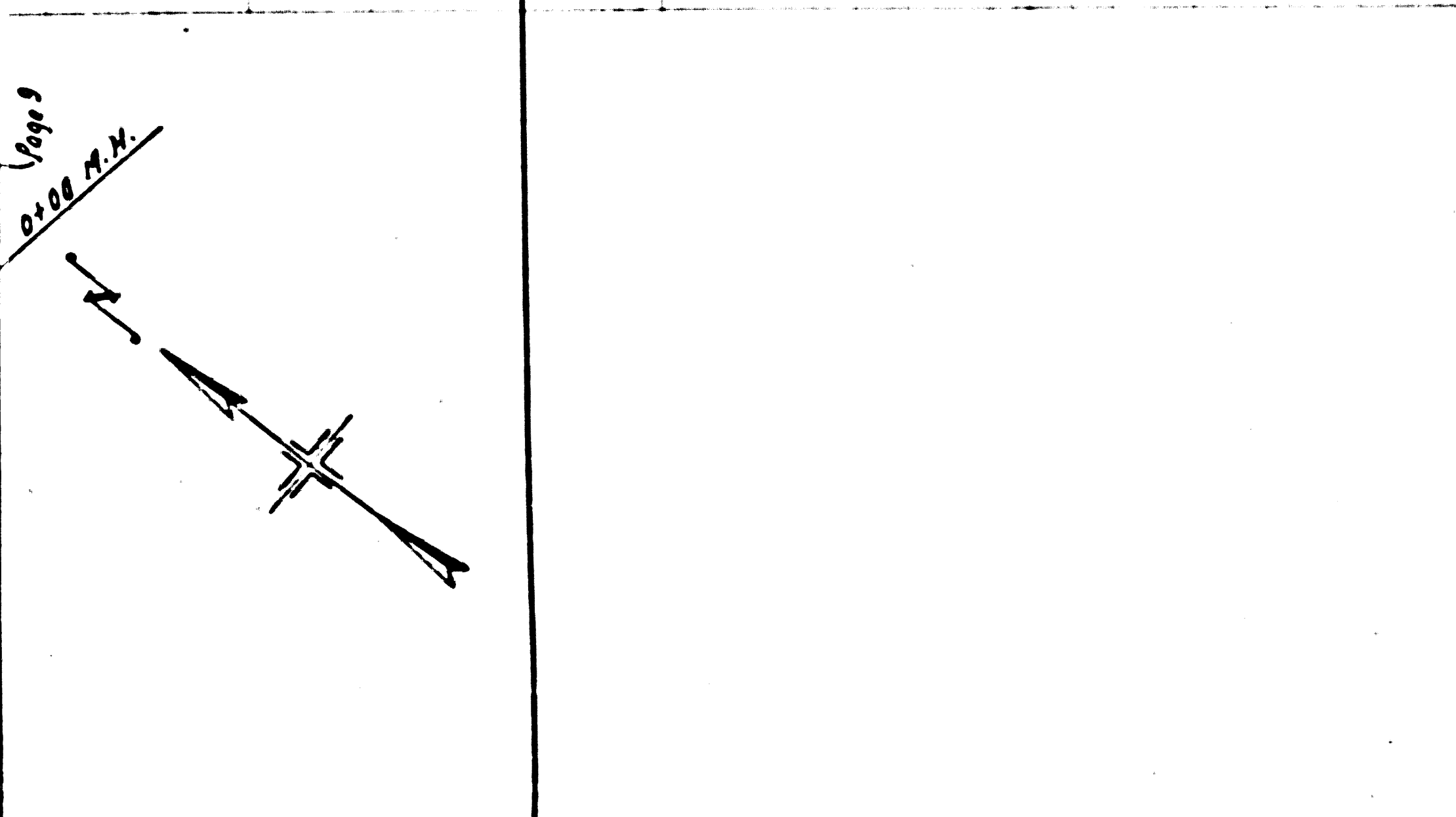
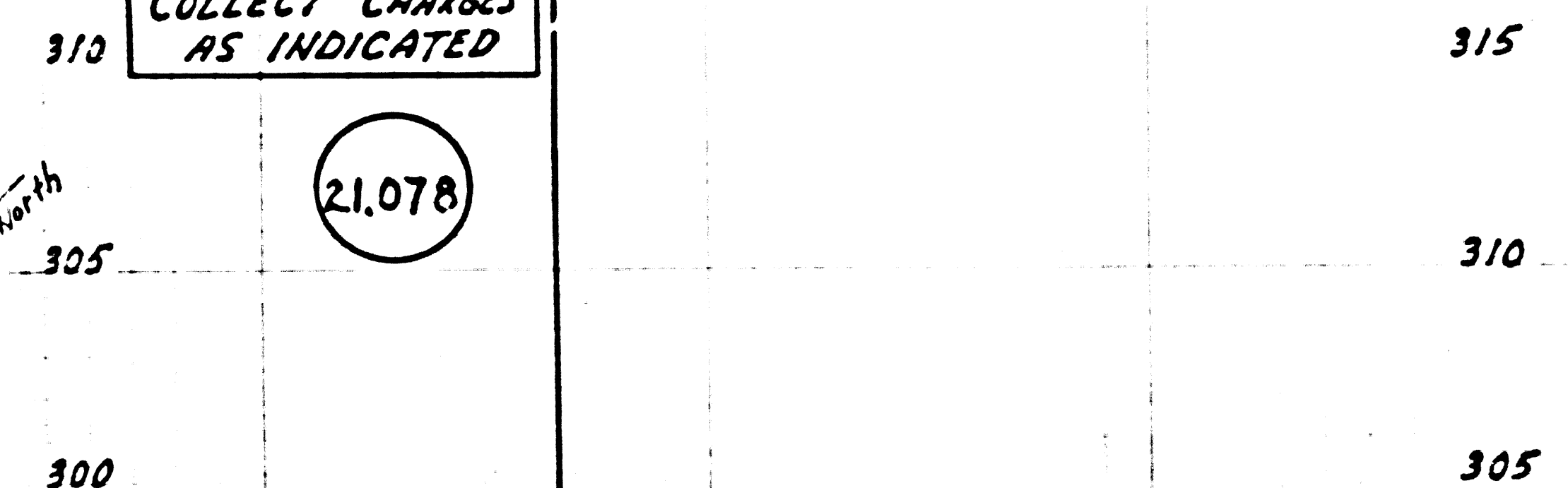
21,076



PC 3523

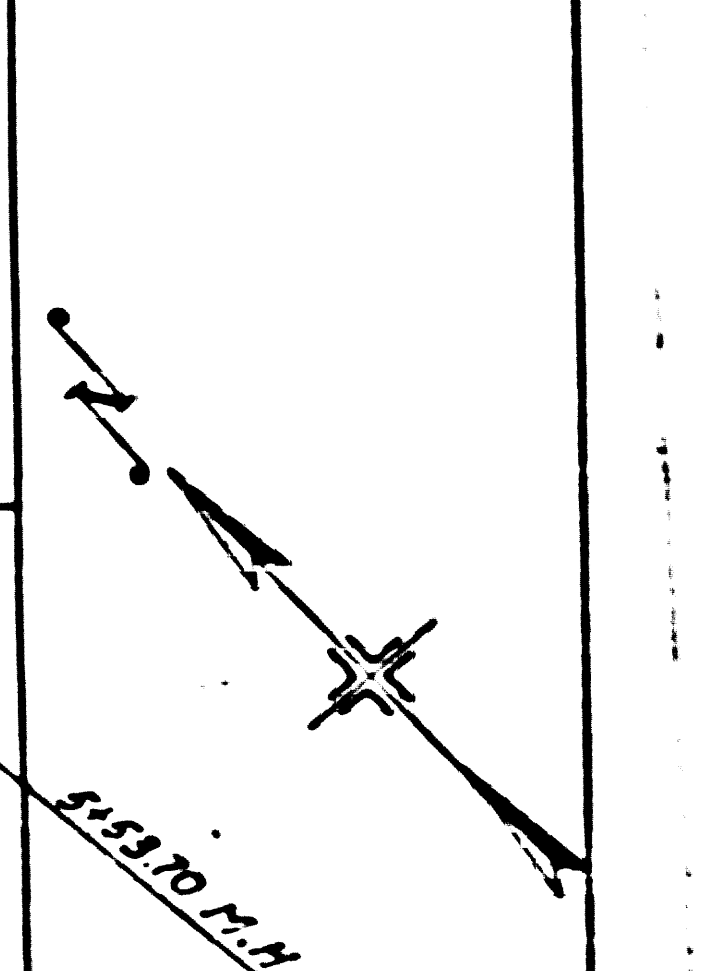
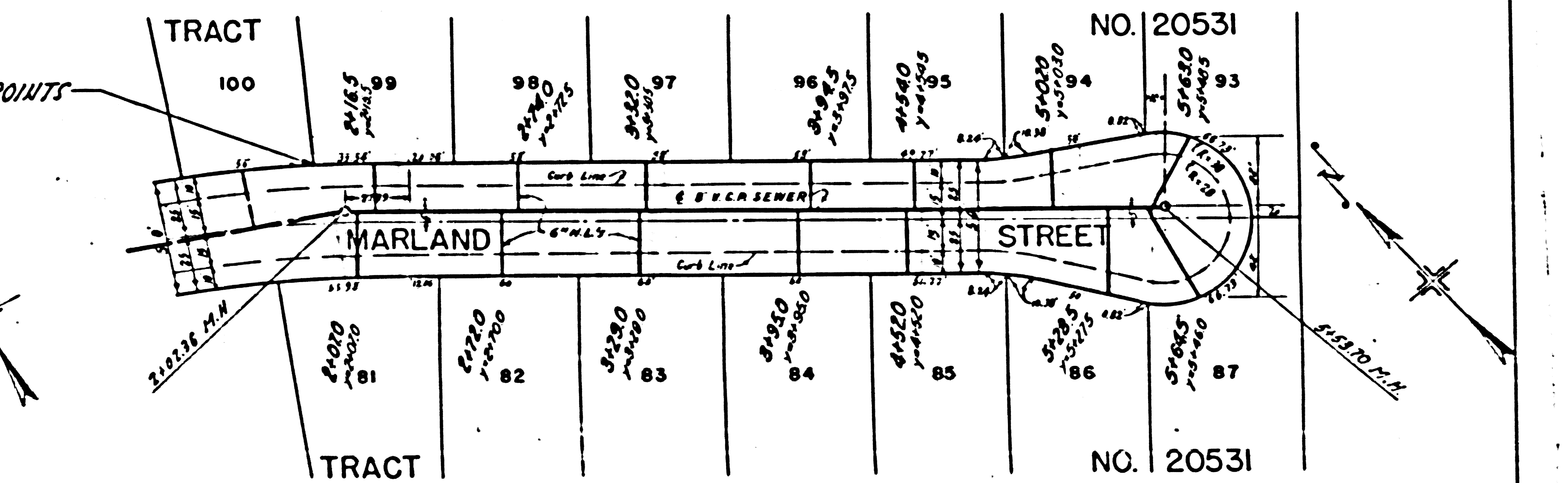
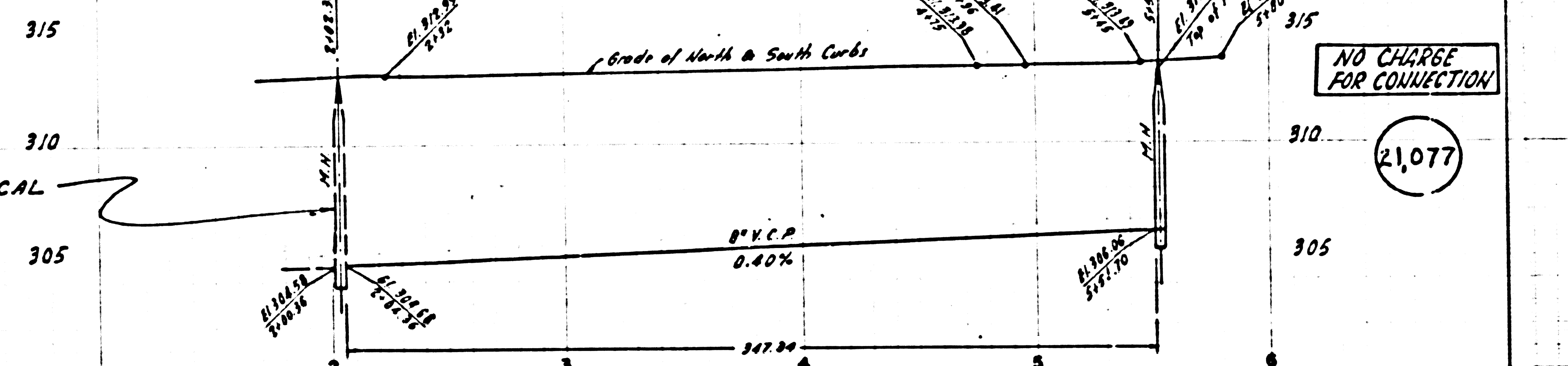
COLLECT CHARGES
AS INDICATED

21,078



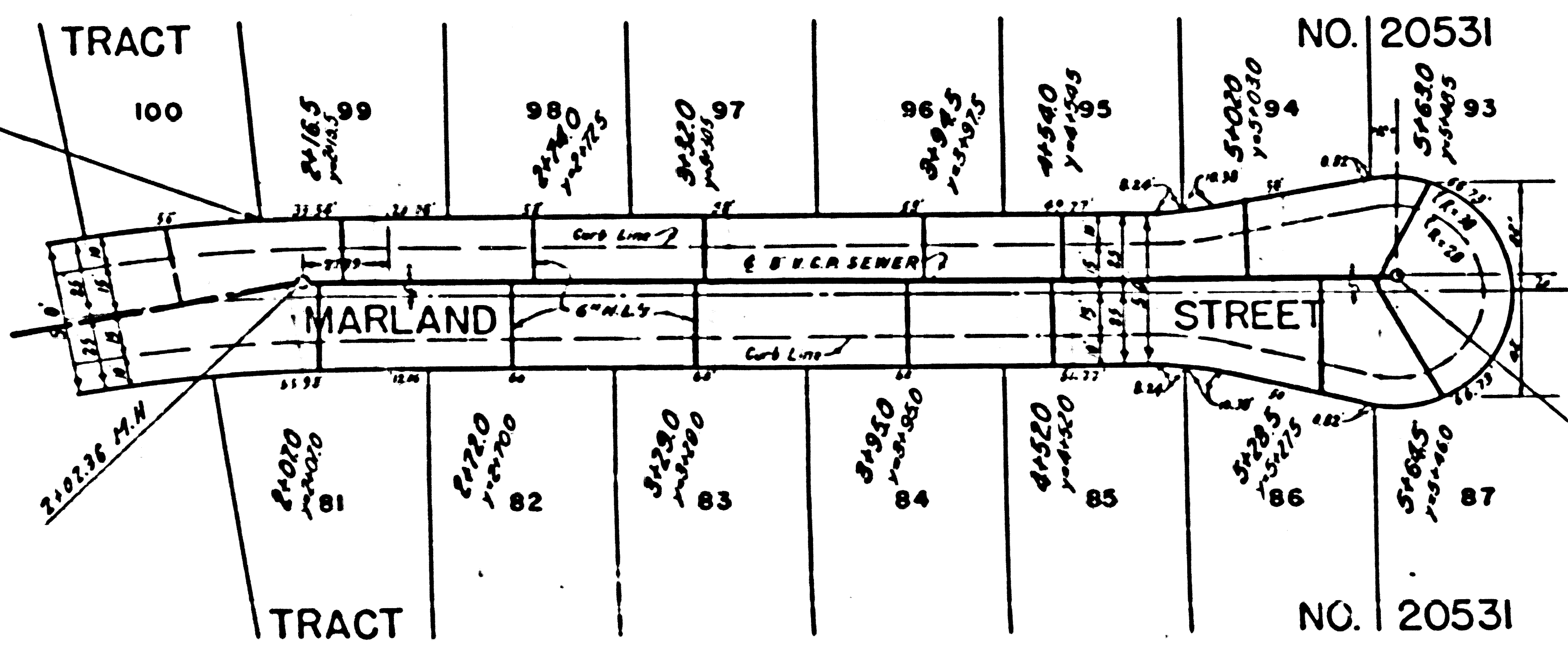
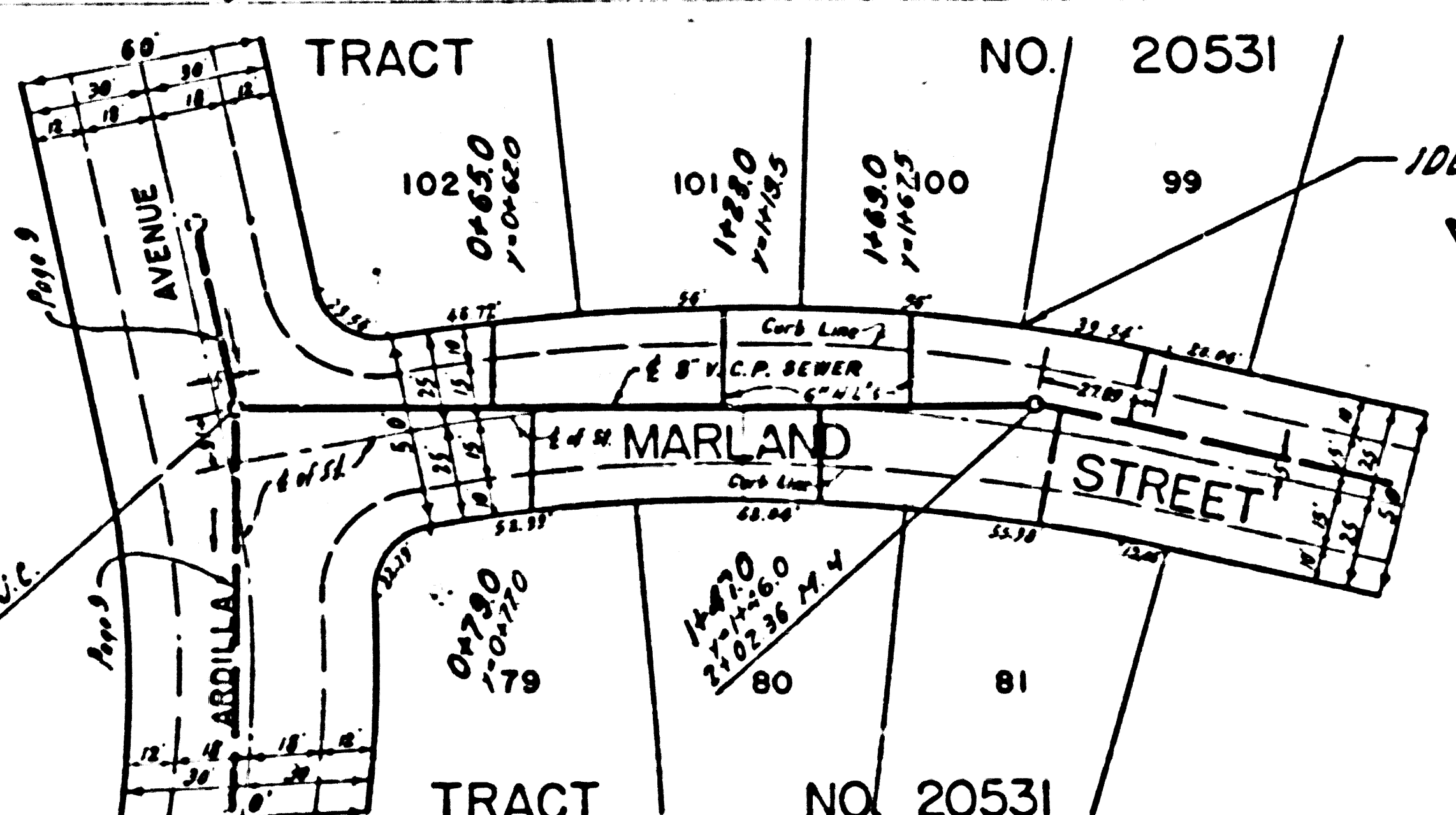
NO CHARGE
FOR CONNECTION

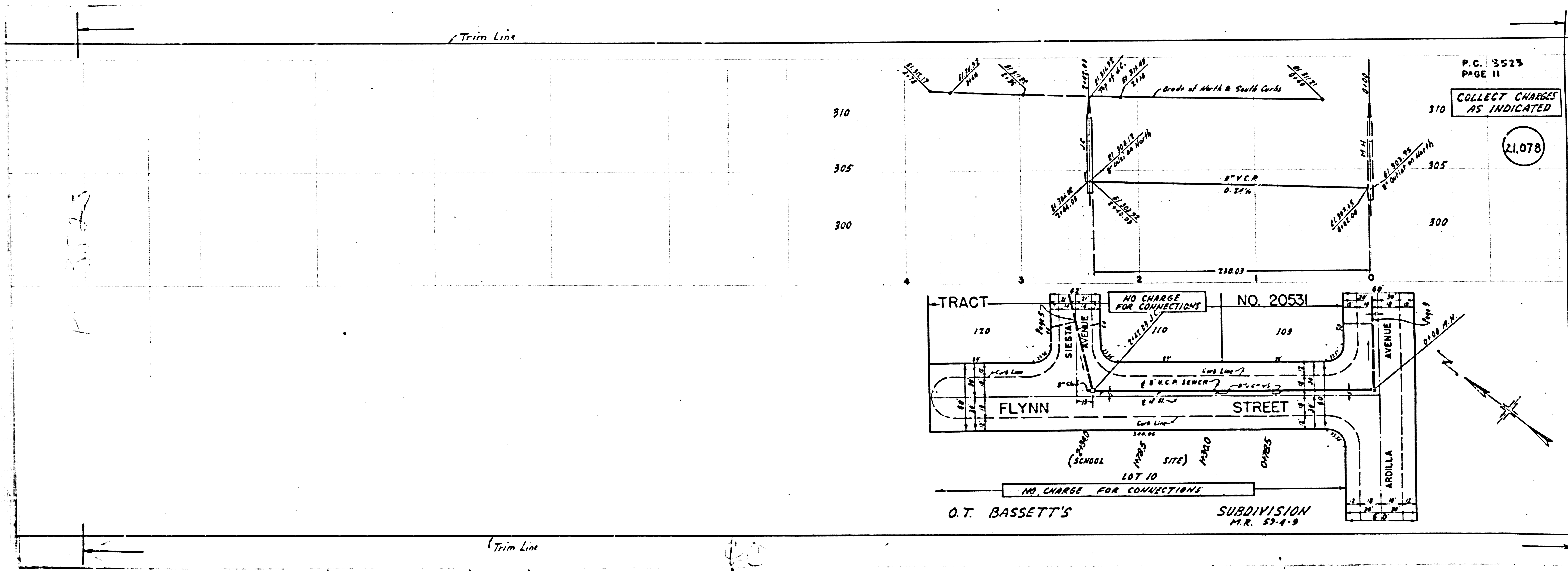
21,077



IDENTICAL

IDENTICAL POINTS





P.C. 5523
PAGE 11

COLLECT CHARGES
AS INDICATED

21.078

TRACT NO. 20531

LOT 109

LOT 110

LOT 120

FLYNN STREET

ARDILLA AVENUE

NO CHARGE FOR CONNECTIONS

8" V.C.P. SEWER

NO CHARGE FOR CONNECTIONS

O.T. BASSETT'S SUBDIVISION M.R. 53-4-9

Trim Line

Trim Line

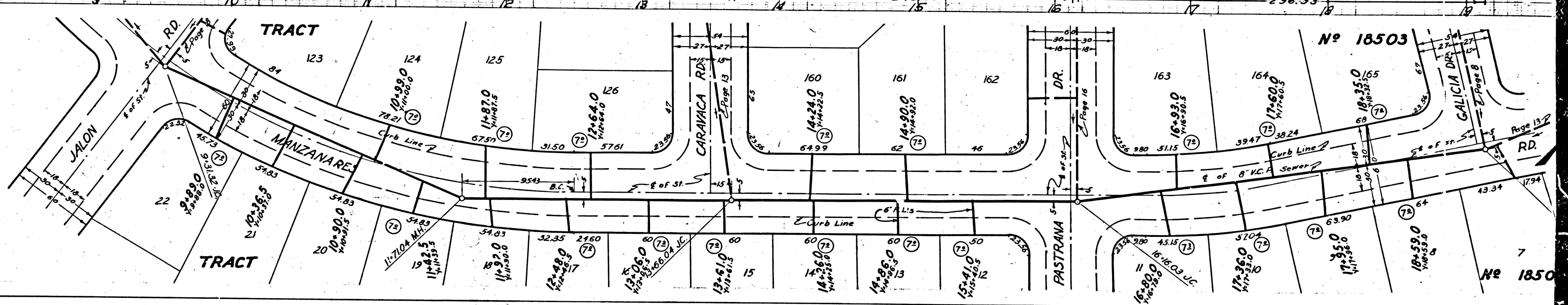
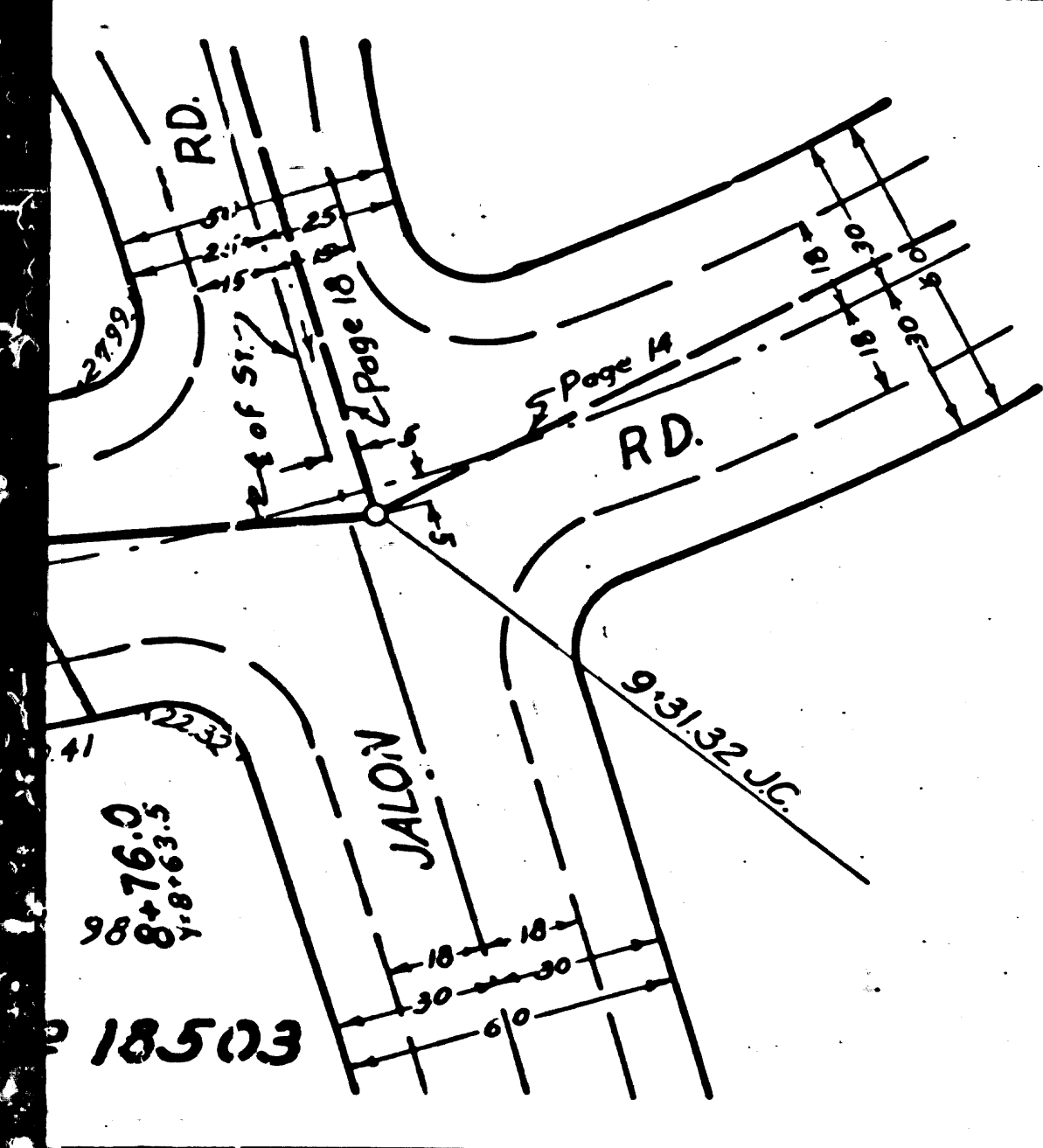
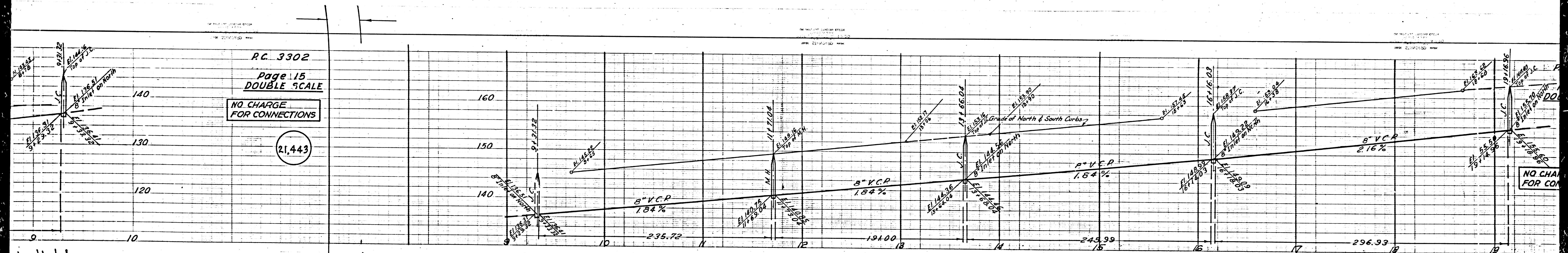
Handwritten notes

Handwritten mark

PC 3302
Page 15
DOUBLE SCALE

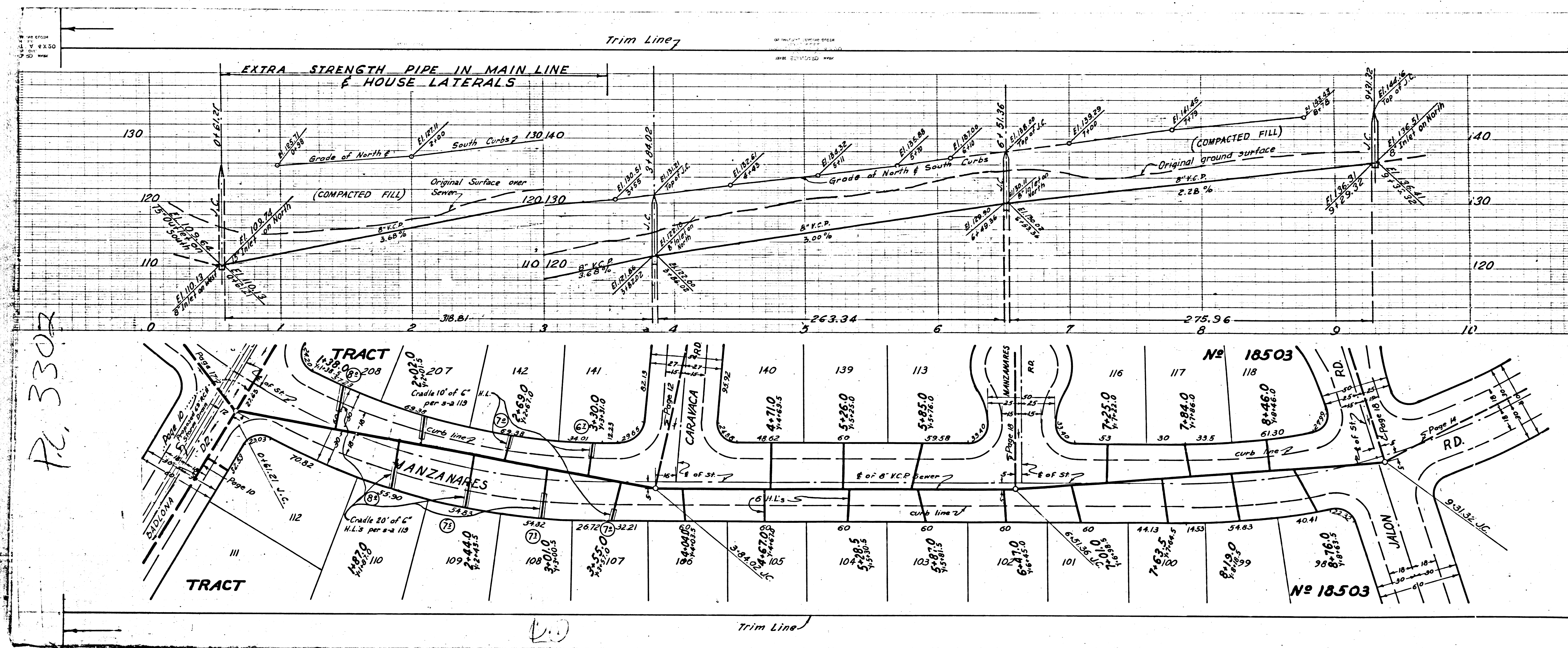
NO CHARGE
FOR CONNECTIONS

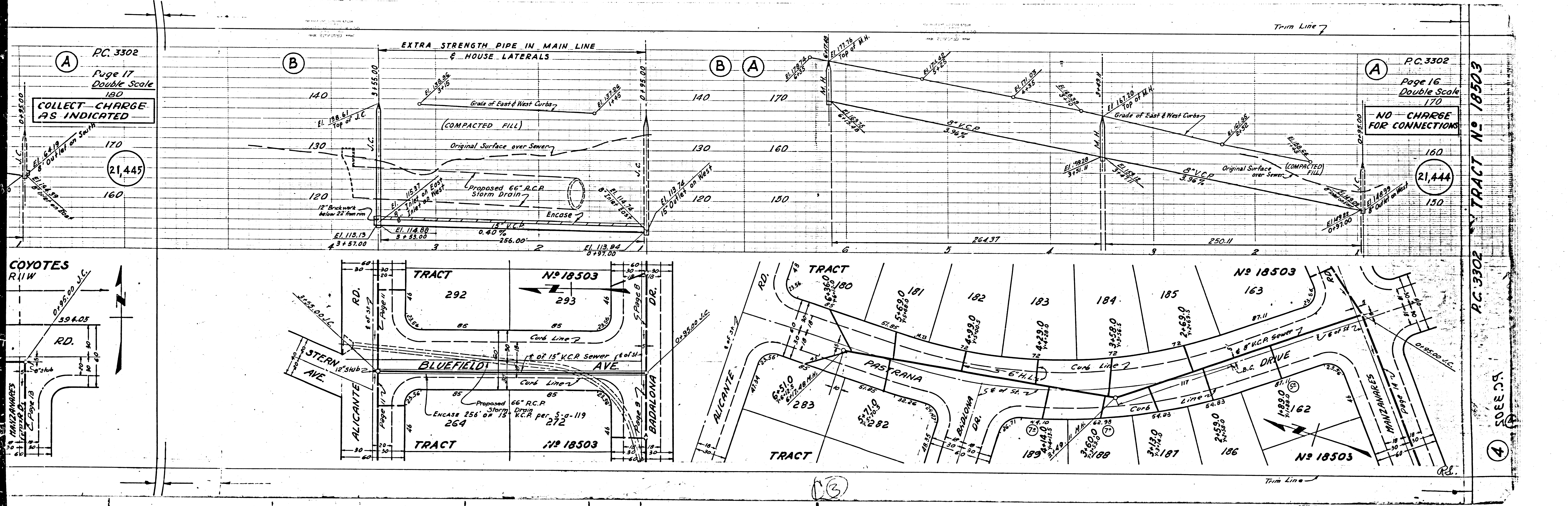
21,443



NO CHARGE
FOR CONNECTIONS

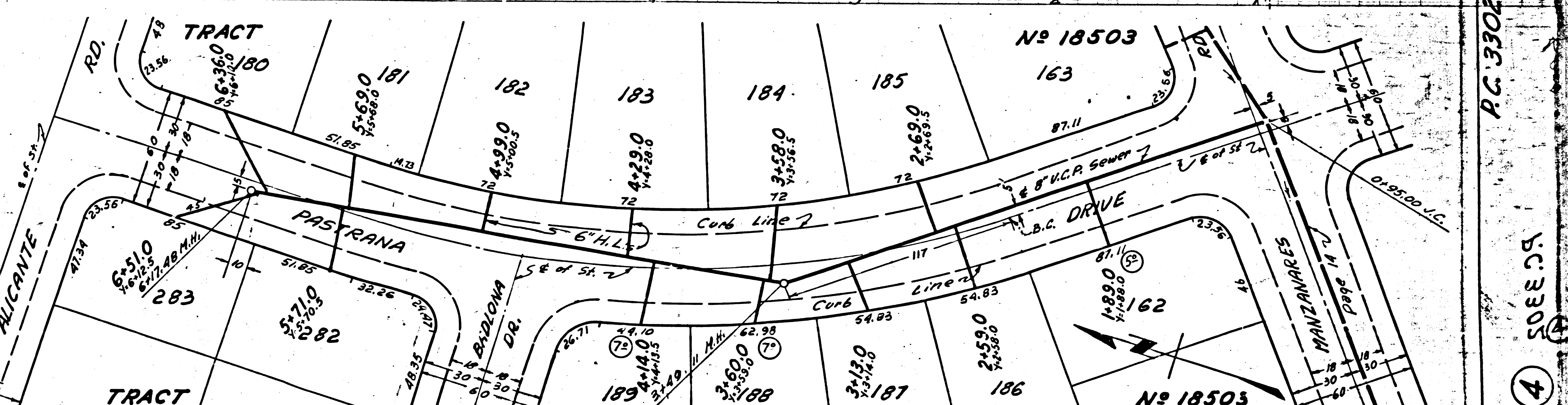
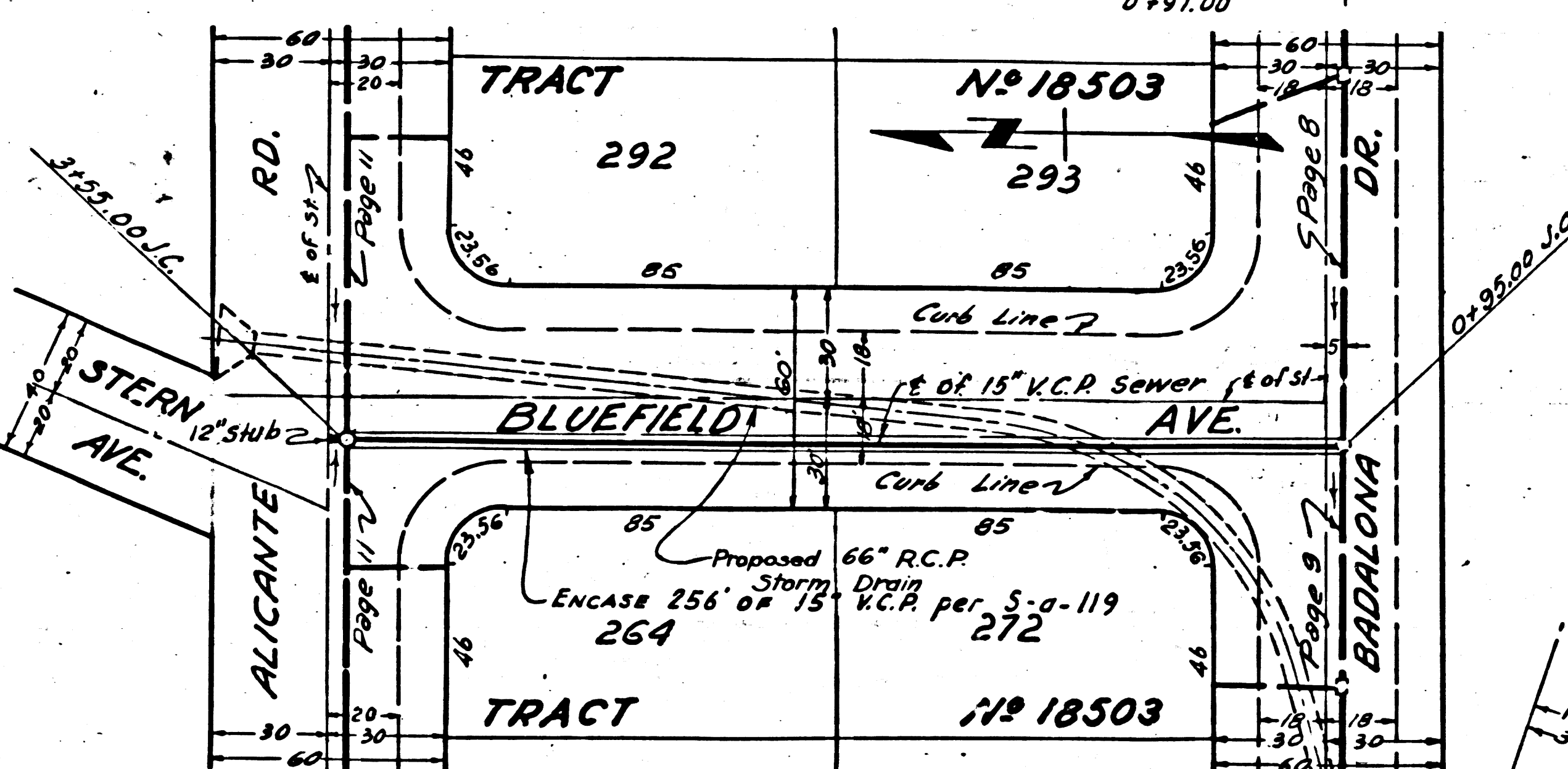
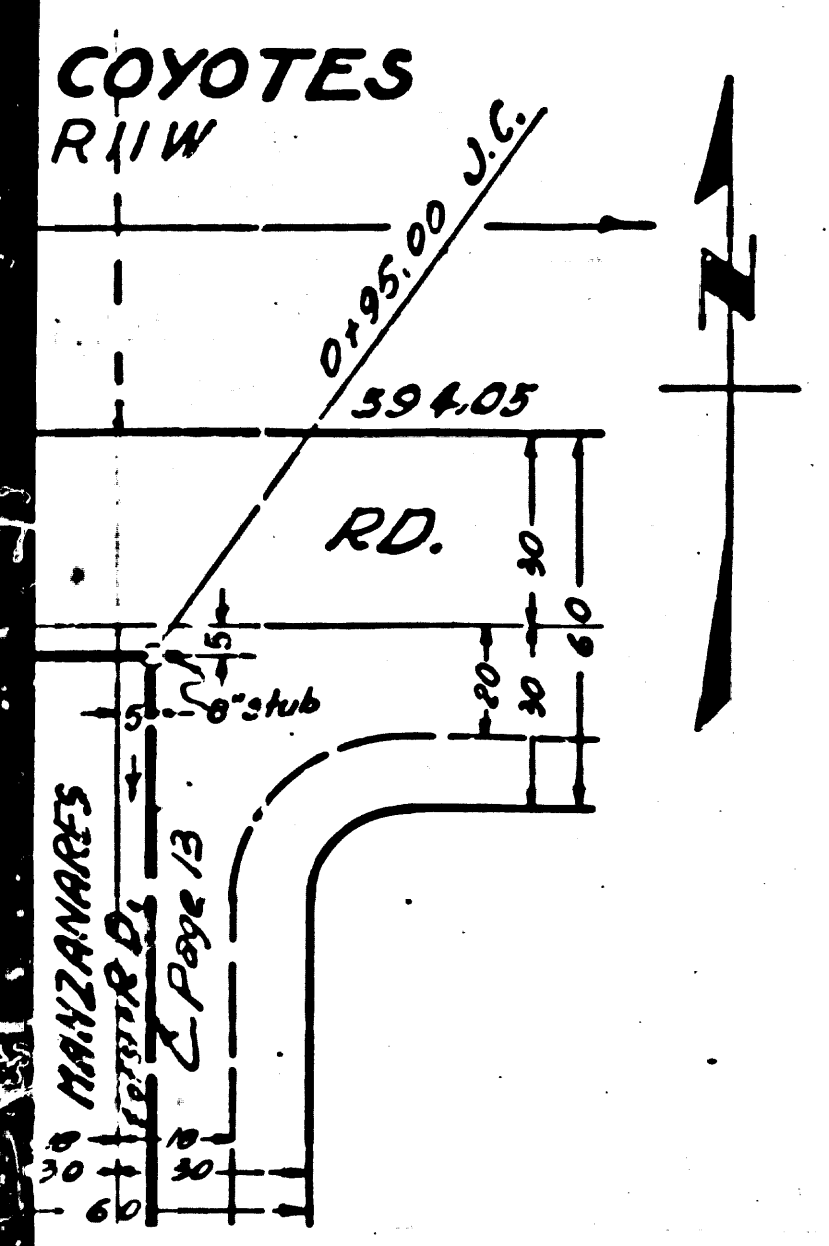
No 18503



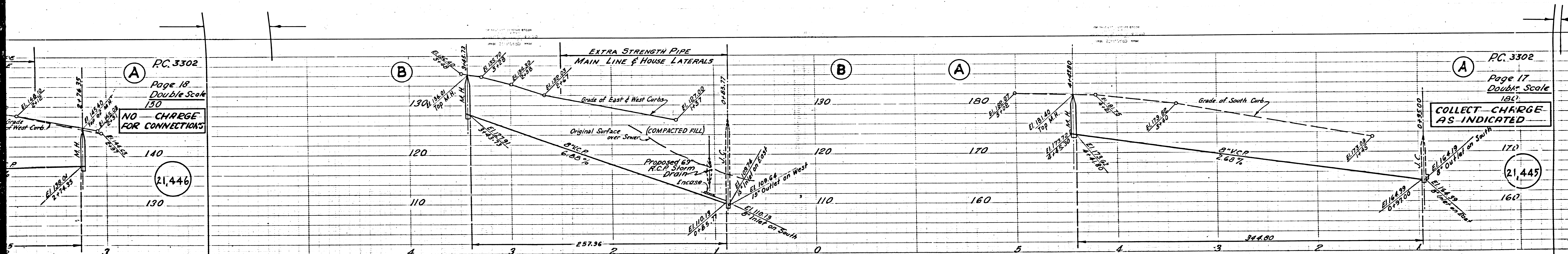


PC. 3302
Page 17
Double Scale
180
COLLECT CHARGE
AS INDICATED

PC. 3302
Page 16
Double Scale
170
NO CHARGE
FOR CONNECTIONS

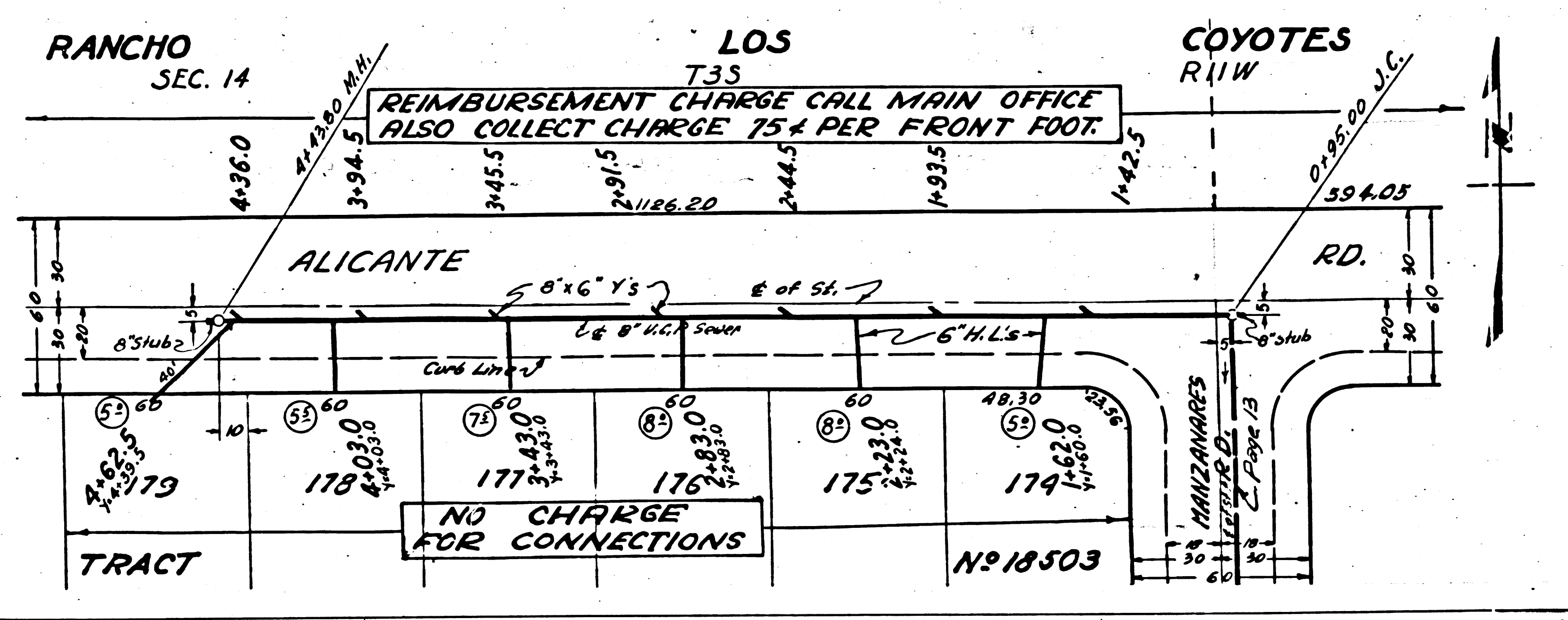
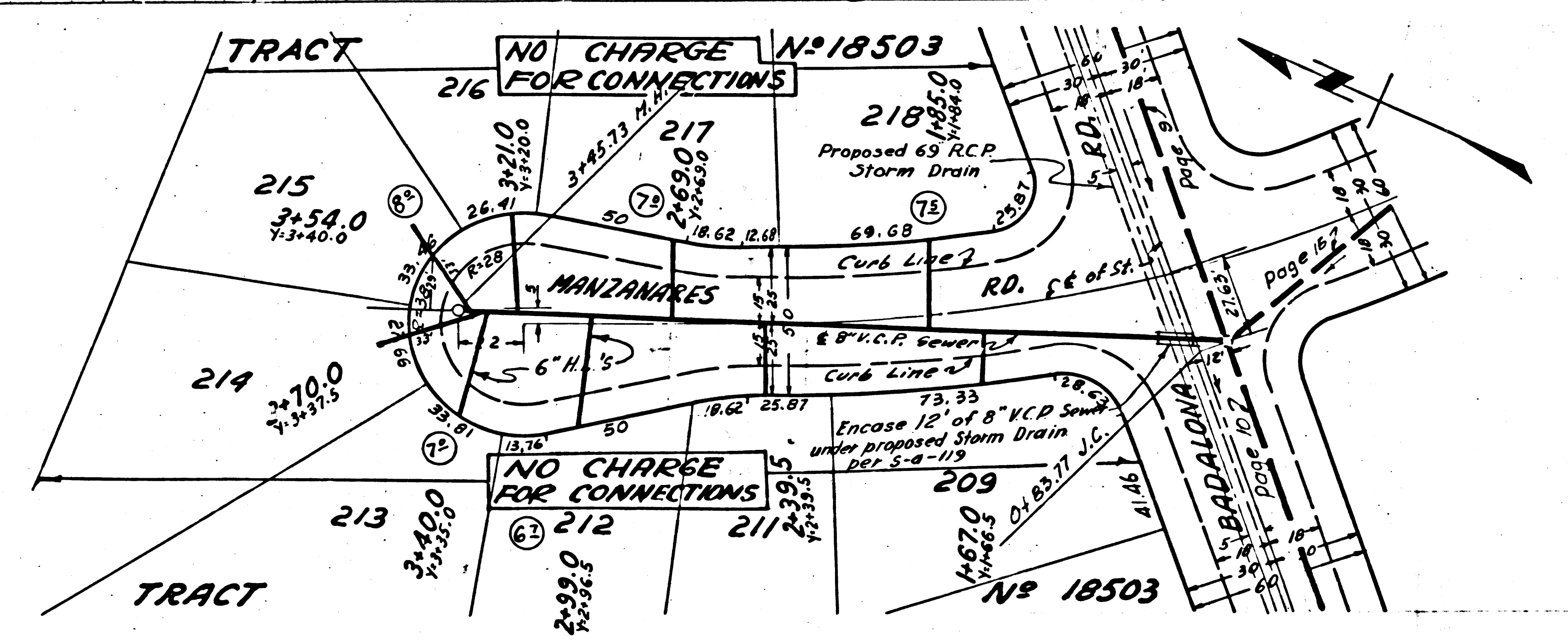
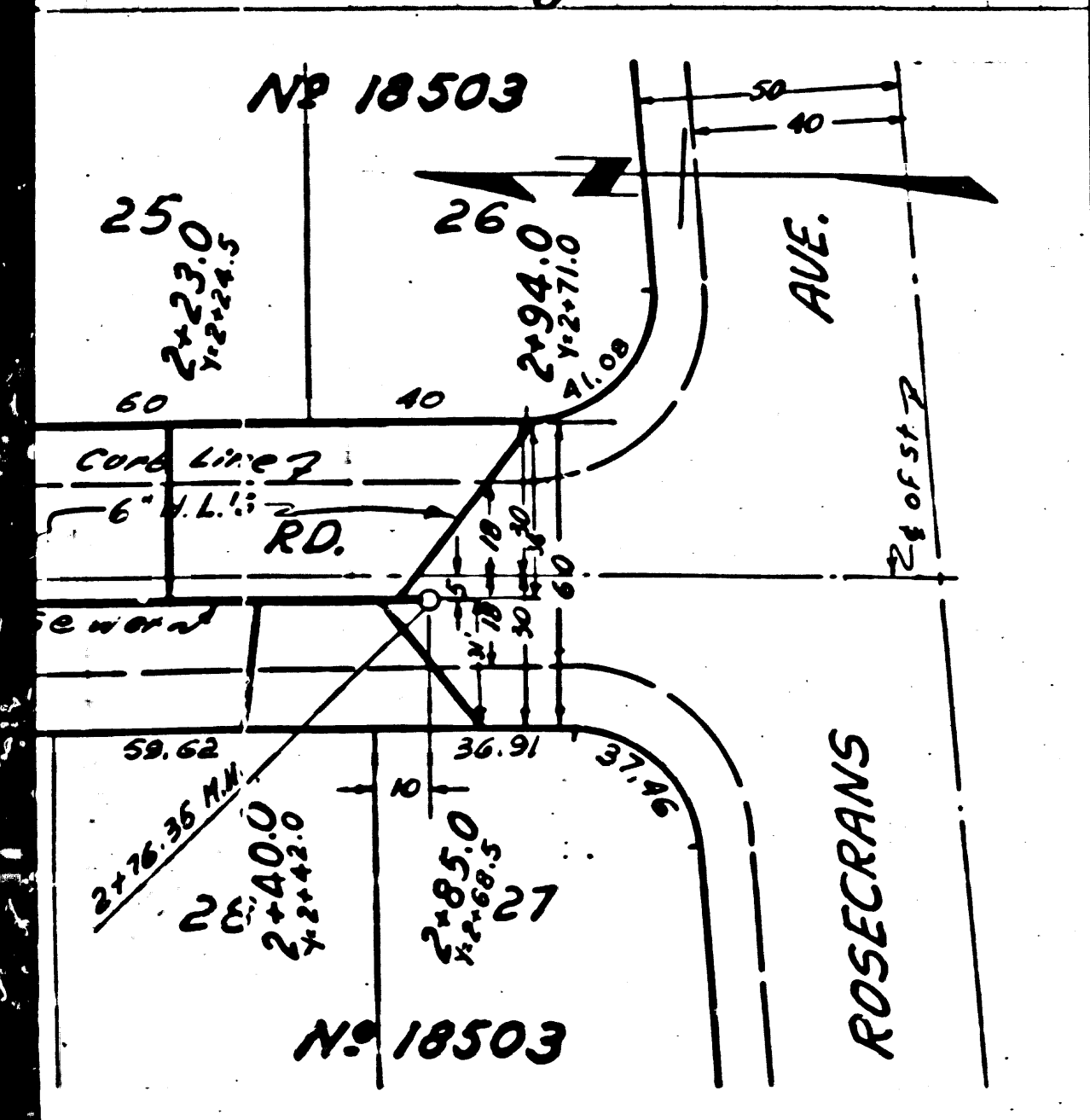


PC. 3302
TRACT N° 18503
4



PC. 3302
Page 18
Double Scale
150
NO CHARGE FOR CONNECTIONS
140
130
21,446

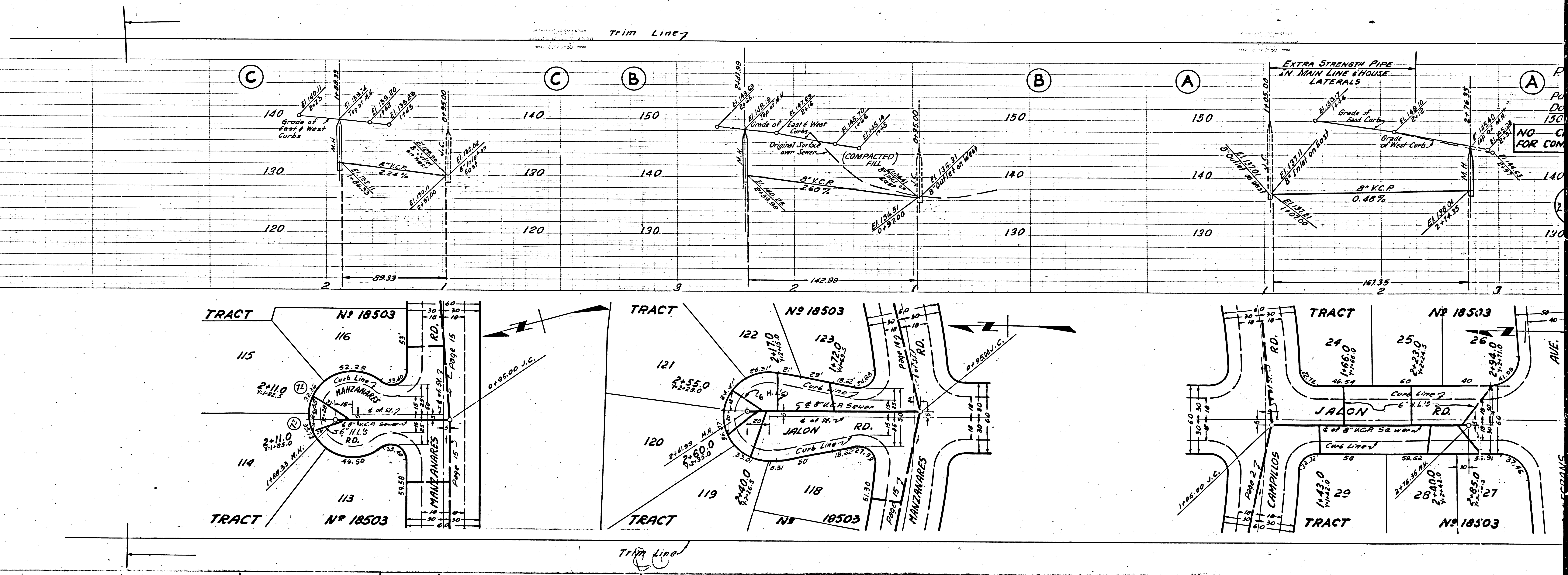
PC. 3302
Page 17
Double Scale
150
COLLECT CHARGE AS INDICATED
170
160
21,445



CO

3302

Pic



NO FOR CON

SCANS