

135
21,586

131
21,586

125
21,586

119
21,586

113
21,586

107
21,586

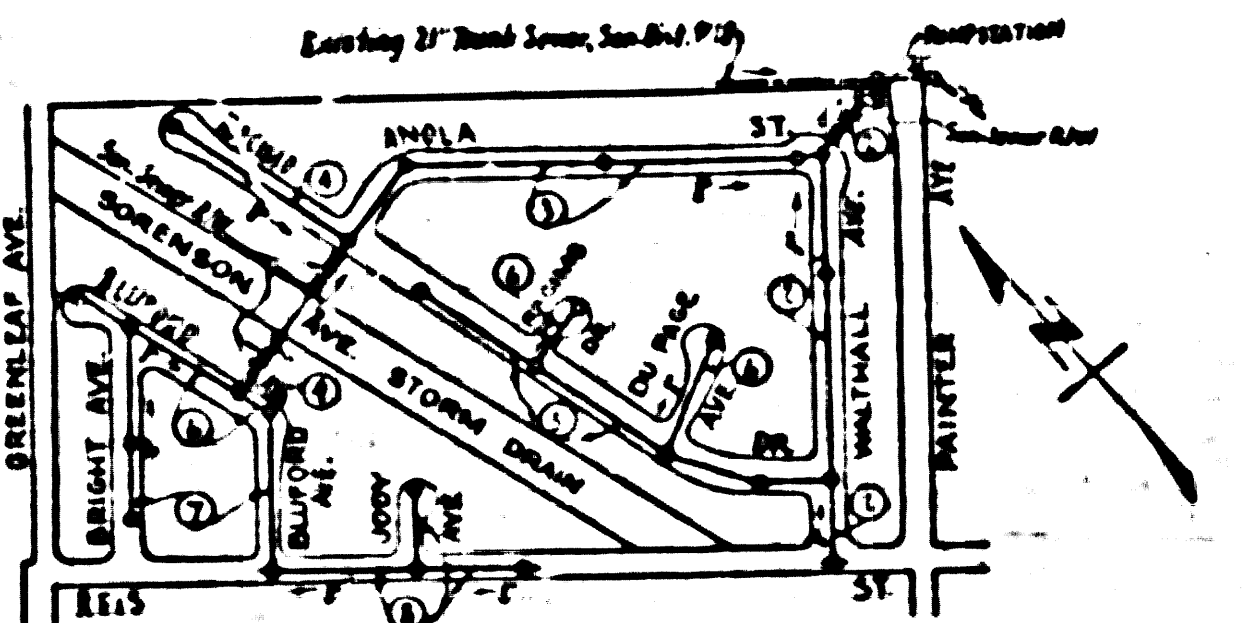
101
21,586

95
21,586

89
21,586

83
21,586

B.M. 51.1195 L&N in C.C. Post
12' East of E Intersection of
Reis and Painter. Elev. 140.045



INDEX MAP
P.C. 3528 TRACT NO. 20669
SCALE: 1" = 400'

| SHEET | PAGES |
|-------|-------|
| 1 | 1-4 |
| 2 | 5-8 |

COLLECT... CHARGES
AS INDICATED
R. U. ... 1-18-55

NOTE: WHITTIER BLDG. DIST. N° II

- Provide stakes on the property lines or property lines produced at right angles to the sewer line at the center line of each manhole.
- No representative of the County Engineer will survey or layout any portion of the work.
- The owner or his authorized representative shall furnish the County Engineer with grade sheets and stations for all house laterals and Y branches and shall provide stakes for them at their proper locations with stationing plainly marked. Any change in location shall be requested in writing by the owner or his representative.
- No revisions shall be made in these plans without the approval of the County Engineer.
1. Use standard manhole frames and covers, S-117, except as noted.
 2. Use standard strength pipe except as noted.
 3. Use cement mortar for all vitrified clay pipe joints.
 4. Resurface all trench within paved area to meet L.A. County Road Dept. or California State Highway Dept. requirements in accordance with plans.
 5. Excavate four feet of sewer at points of interference with poles, S-119.
 6. House laterals to be constructed with inverts at property lines... 6 feet below curb grade except as noted.
 7. All structures shall be brick sewer structures, S-104, except as noted.
 8. For allowable leakage test, use Formula No. 1, Spec's, Sec. 51.

... before breaking into any existing structure
... and before final acceptance of this work,
... in order that required, important may be made.

PROFILE, ALIGNMENT AND GRADE OF
SANITARY SEWERS
TO BE CONSTRUCTED IN

TRACT N° 20669

PRIVATE CONTRACT NO. 3528
W. S. 34
6 SHEETS

Scale: 1" = 100' HORIZ. 1" = 10' VERT.
JULY 1955
PREPARED IN THE OFFICE OF
G. J. JENNINGS CO.

Arthur J. Jennings
No. 611 N. 2nd St.
FOR LEGEND SEE PLAN NO. S-64

NOTE:

Grades to which this improvement is to be constructed are shown on plans and profiles. Grade points for top of curb, center line of street, or corner line of street are shown by circles on profiles. At all points between designated points the grade shall be established so as to conform to a straight line drawn between said designated points.

Elevations are in feet above U.S.C.S. datum or mean sea level.

This drawing and the data herein are hereby made a part of the specifications.

Work shall be constructed according to specifications on file in the office of the County Engineer and shall be prosecuted only in the presence of the County Engineer.

Before work can be started, the contractor shall obtain a permit to excavate in County streets from the L.A. County Road Dept., 108 W. 2nd St. and make a deposit with the County Engineer, Build. Div. (Room 104), 109 So. Broadway, sufficient to cover the cost of construction inspection and record plans.

Approval of this plan by the County of Los Angeles does not constitute a representation as to the accuracy of the location of or the existence or non-existence of any underground utility, pipe, or structure within the limits of this project. This note applies to all sheets.

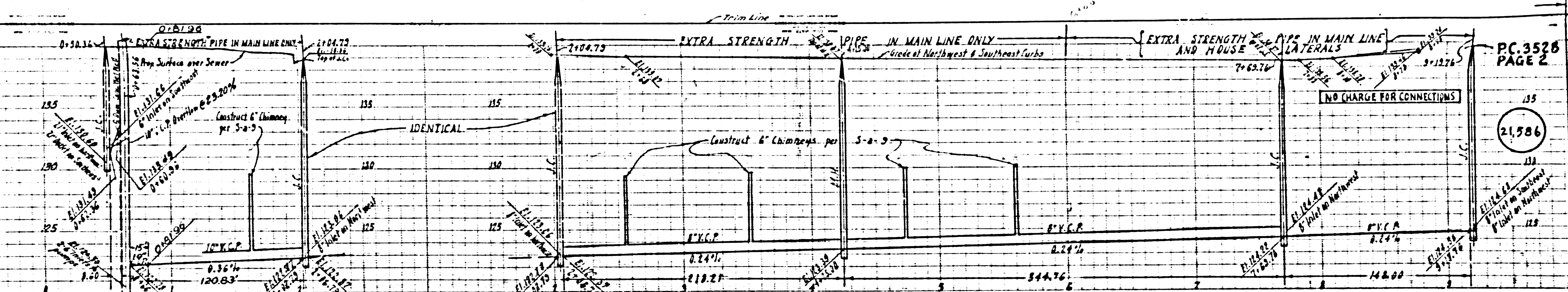
If work is to be done in a State Highway, a permit shall be obtained from the State of California, Division of Highways, 120 South Spring Street.

COUNTY OF LOS ANGELES, CALIFORNIA

Approved, William J. Fox, County Engineer
W. J. Fox
Approved, A. M. Ream
Chief Clerk of the Board
A. M. Ream
Checked by *R. U. ...*
Date *8-18-55*
Office of County Engineer, P.O. Box 2160

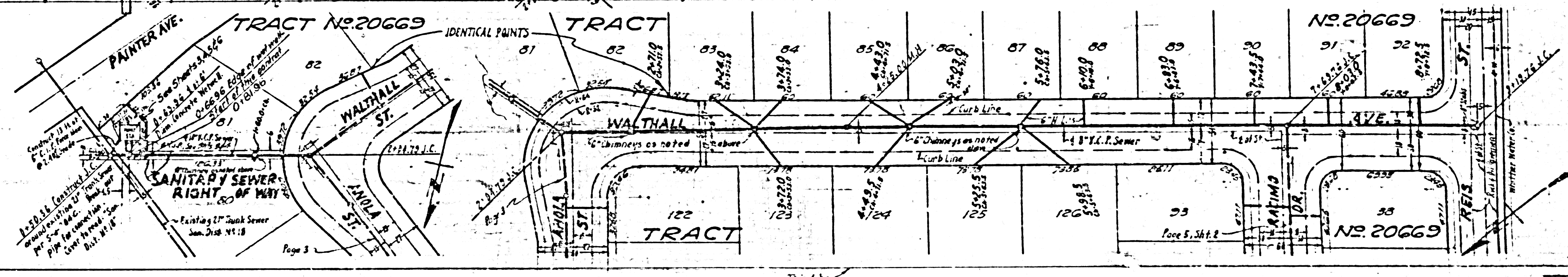
21,586

Leaked 10-20-55 W. ...



PC.3528
PAGE 2

21,586



Page 3

714.1

NO CHARGE FOR CONNECTIONS

21,588

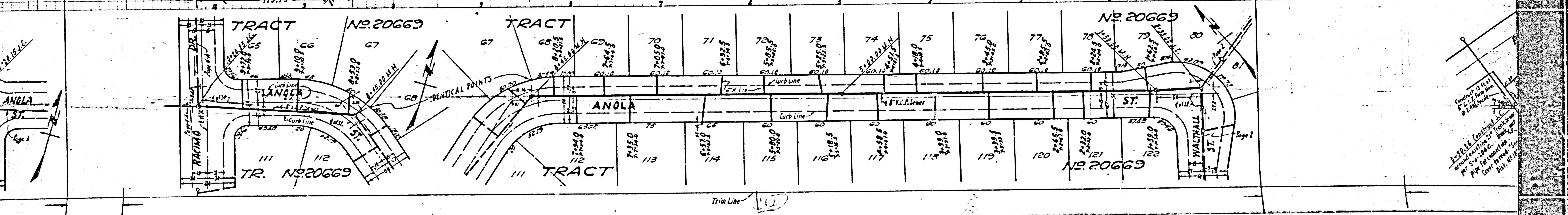
NO CHARGE FOR CONNECTIONS

21,587

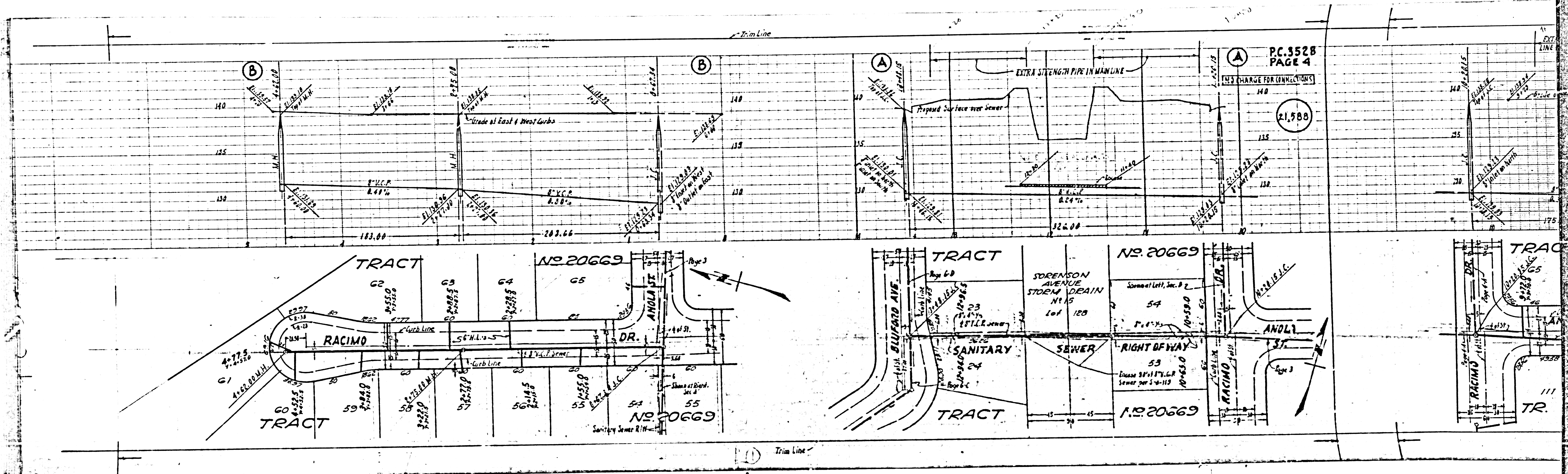
NO CHARGE FOR CONNECTIONS

21,587

NO CHARGE FOR CONNECTIONS



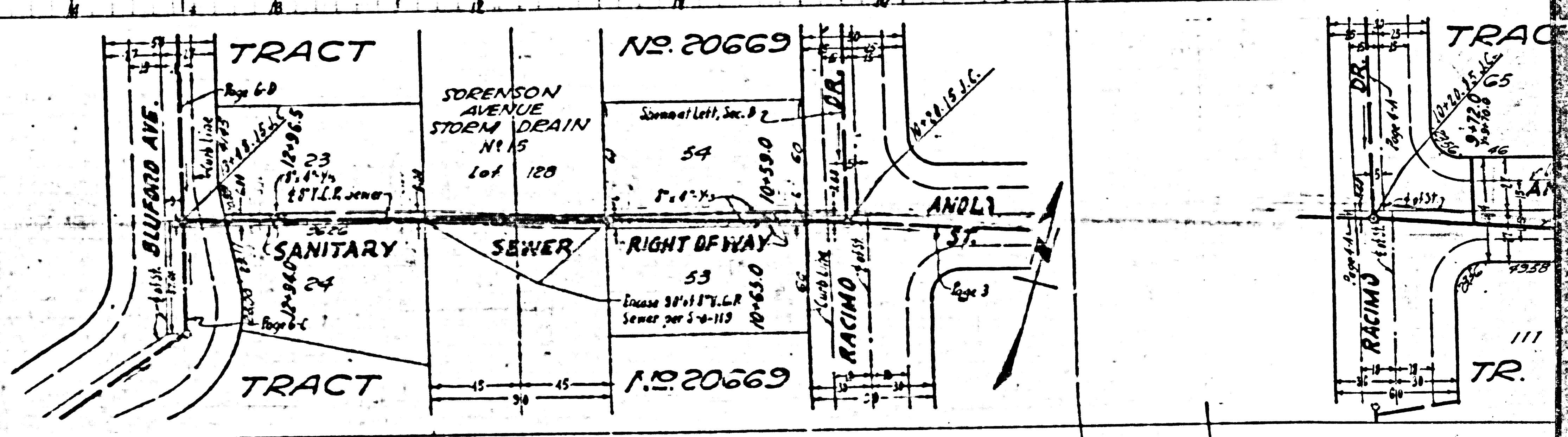
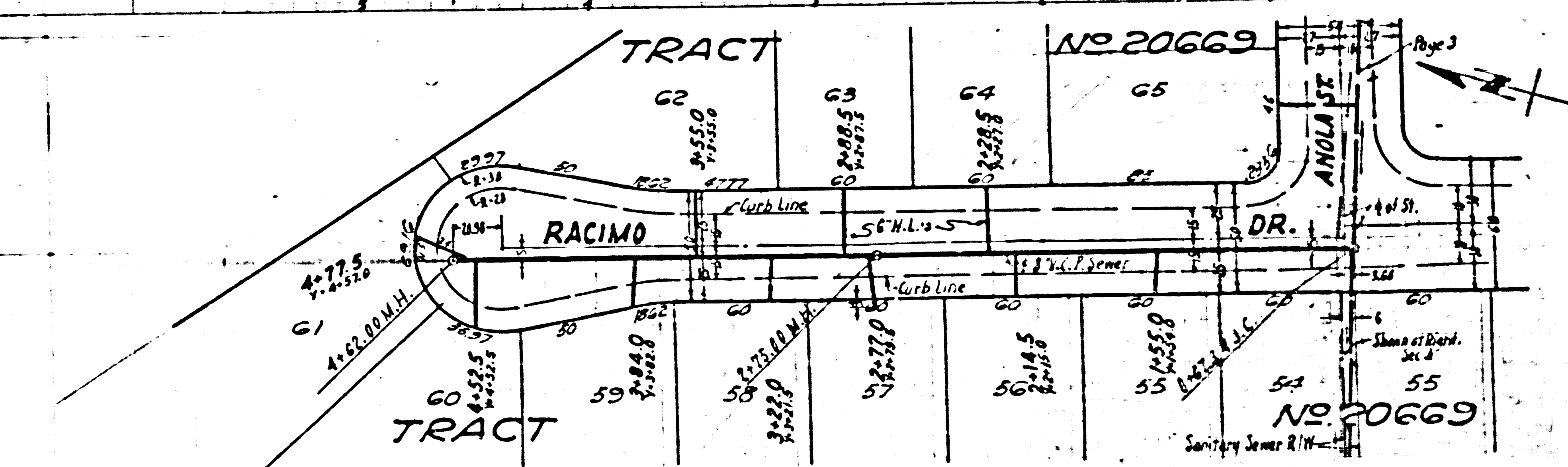
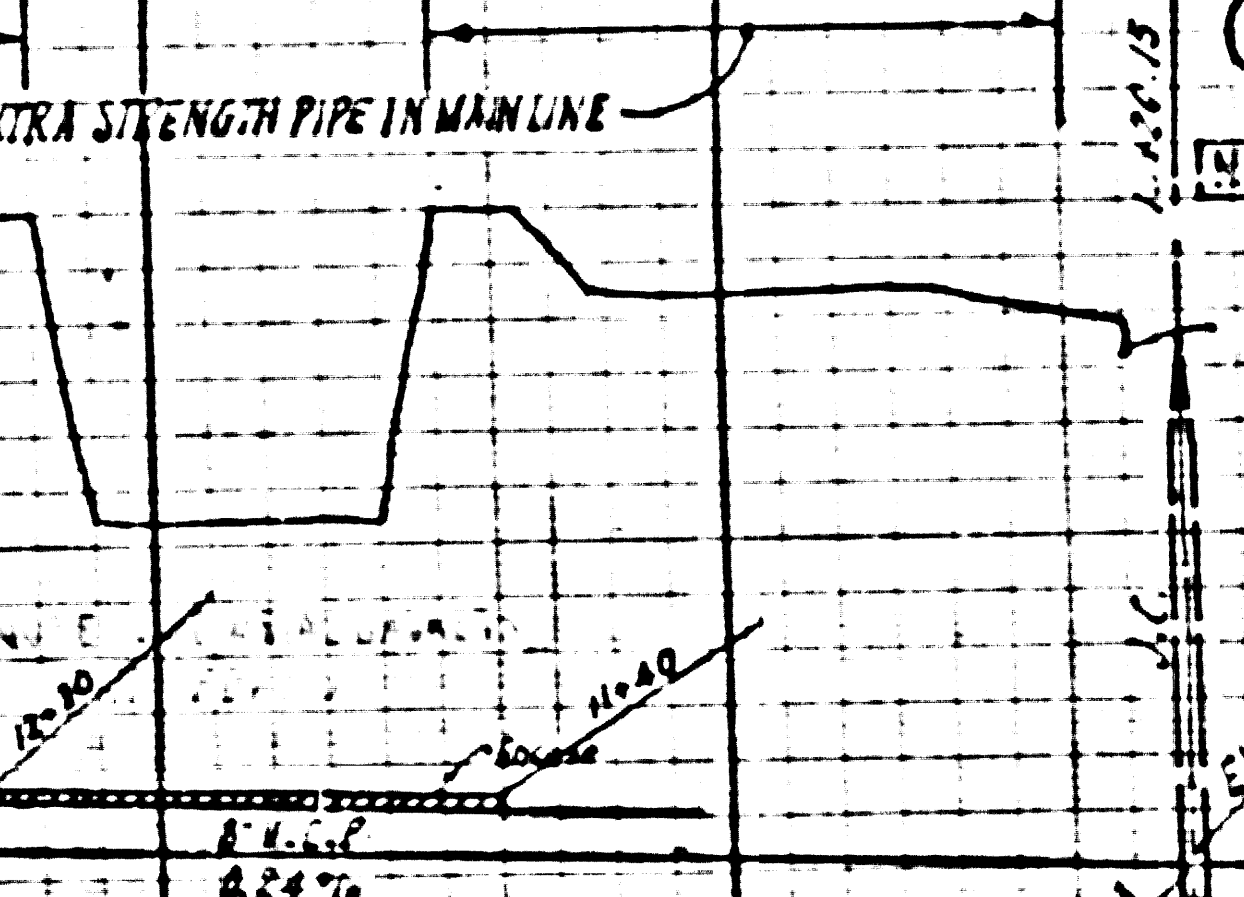
Contract 11111
Approved 11/11/11
P.C. 3528
Pipe Cover 12 inches
11/11/11

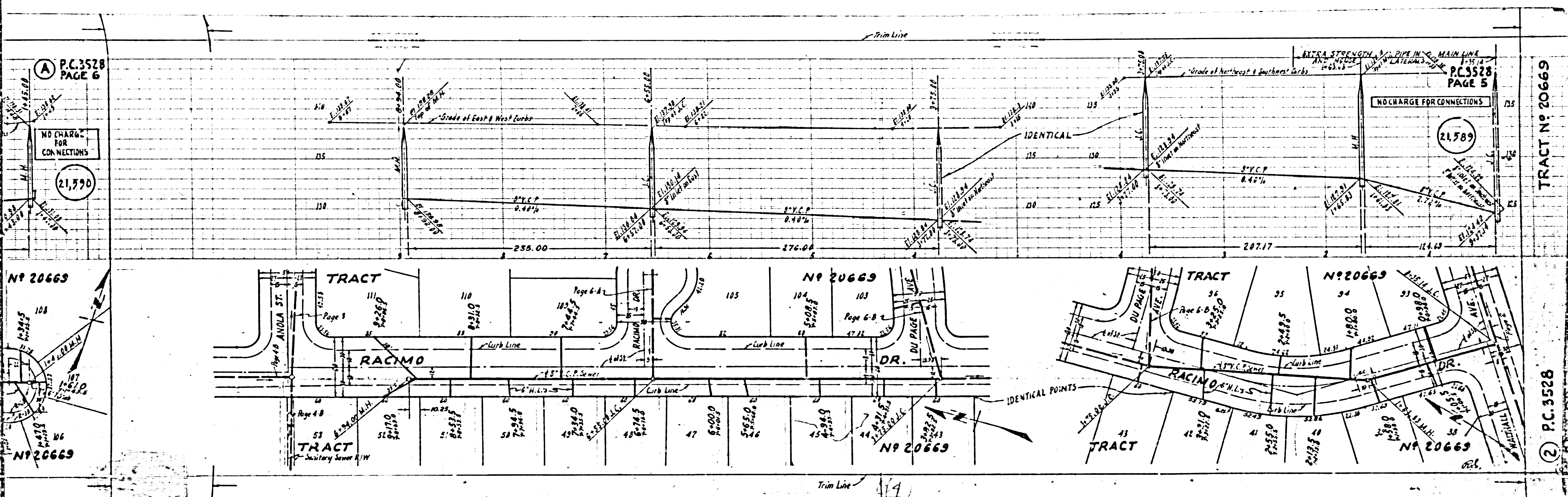


P.C. 3528
PAGE 4

CHARGE FOR CONNECTIONS

21,588





P.C. 3528
PAGE 6

NO CHARGE FOR CONNECTIONS

21,590

P.C. 3528
PAGE 5

NO CHARGE FOR CONNECTIONS

21,589

TRACT No 20669

No 20669

No 20669

No 20669

No 20669

TRACT

No 20669

No 20669

P.C. 3528

4

P.C. 3528
PAGE 7

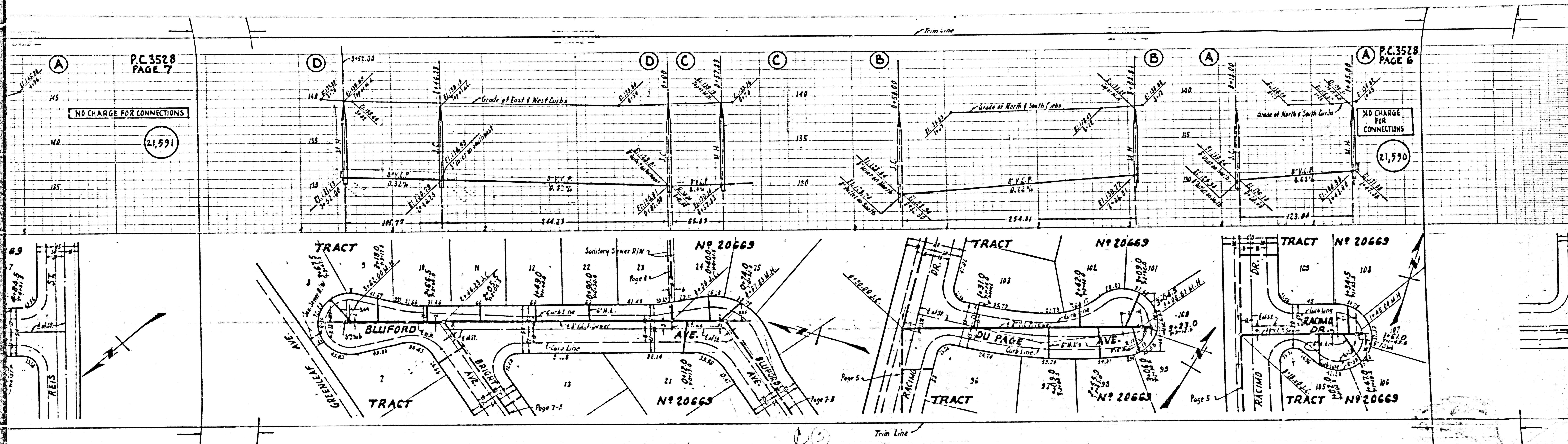
NO CHARGE FOR CONNECTIONS

21,591

P.C. 3528
PAGE 6

NO CHARGE FOR CONNECTIONS

21,590



P.C. 3526
PAGE 6

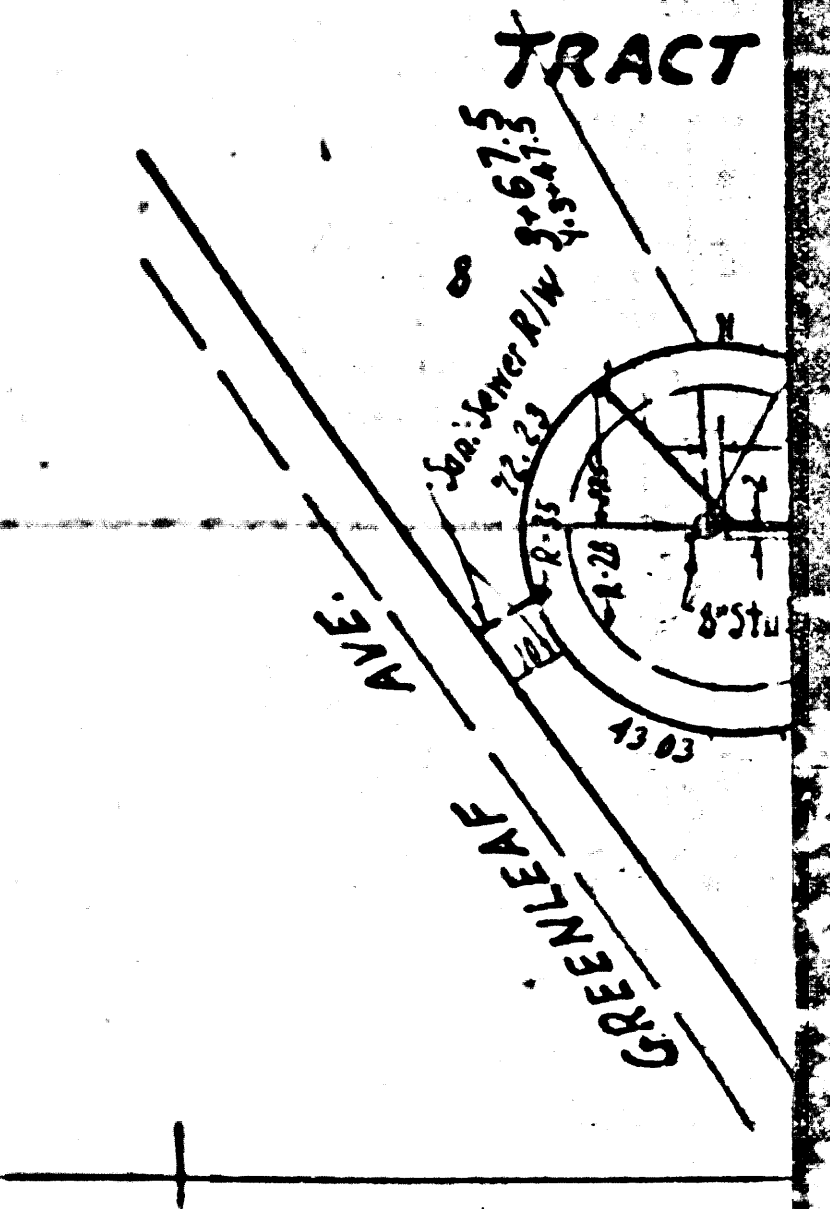
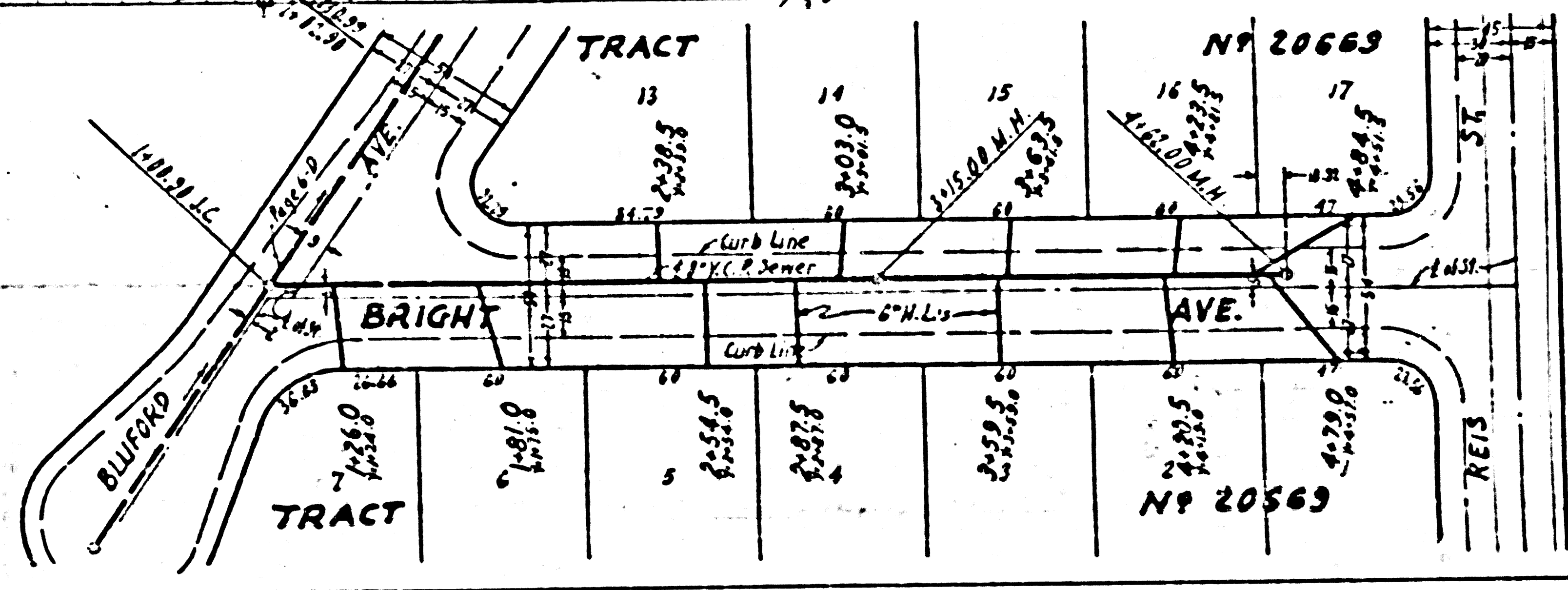
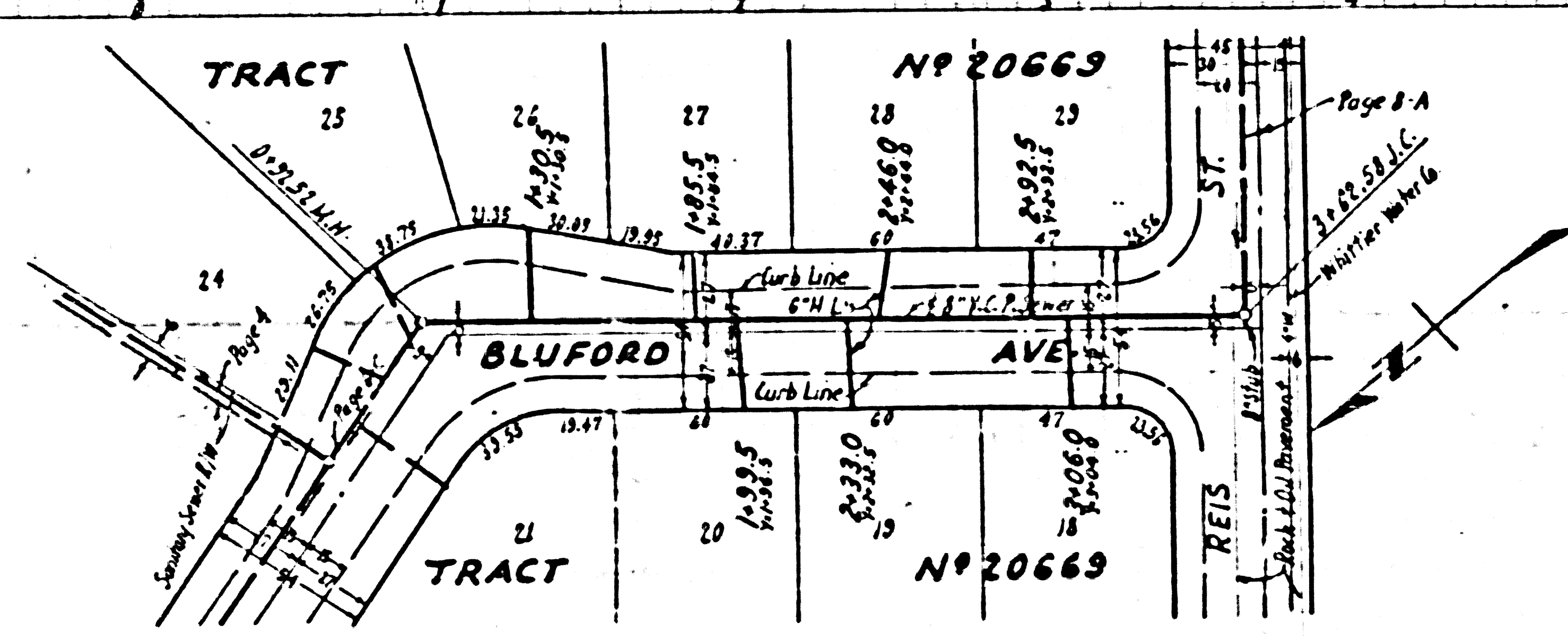
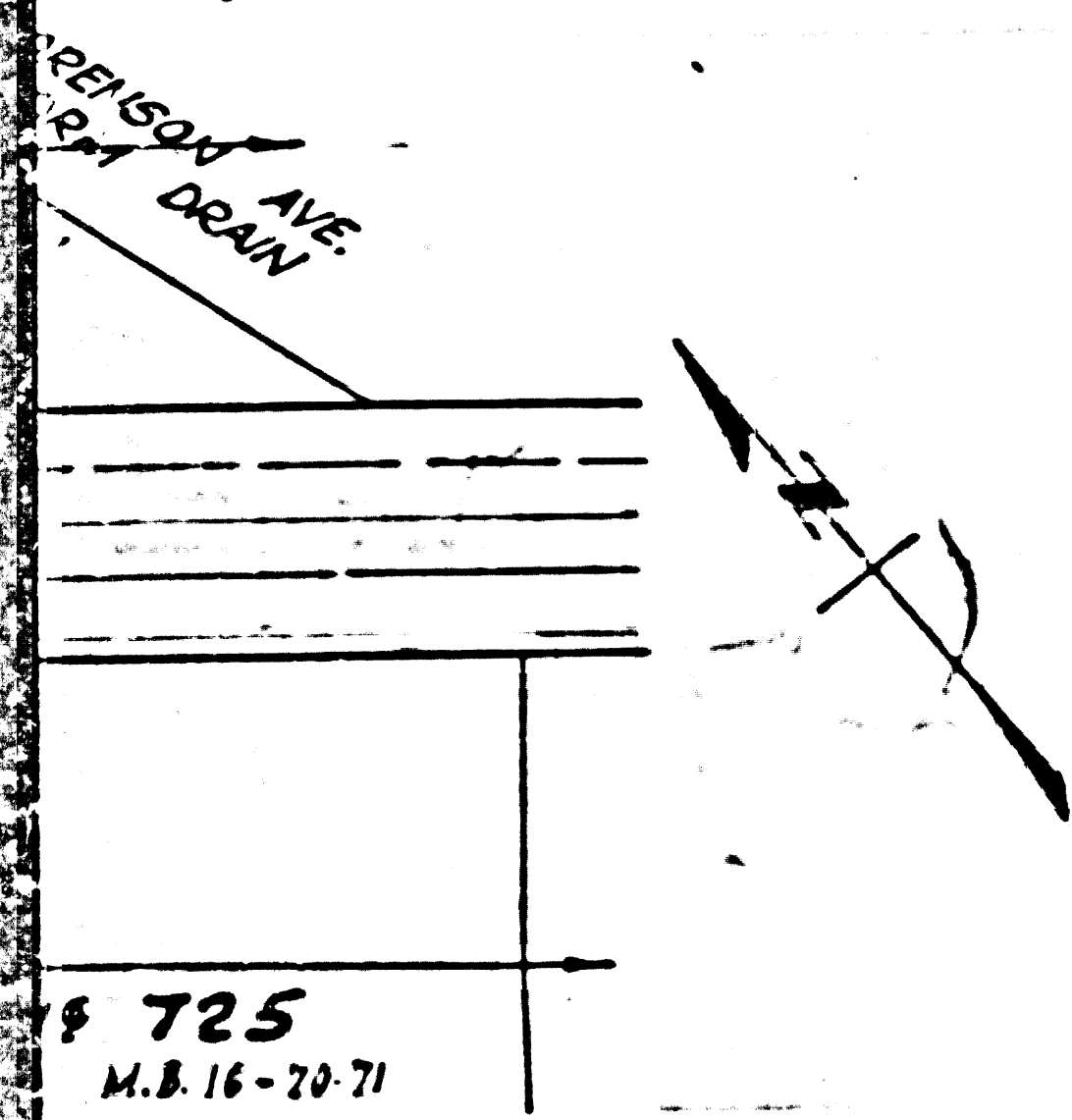
COLLECT CHARGES AS INDICATED

21,592

P.C. 3528
PAGE 7

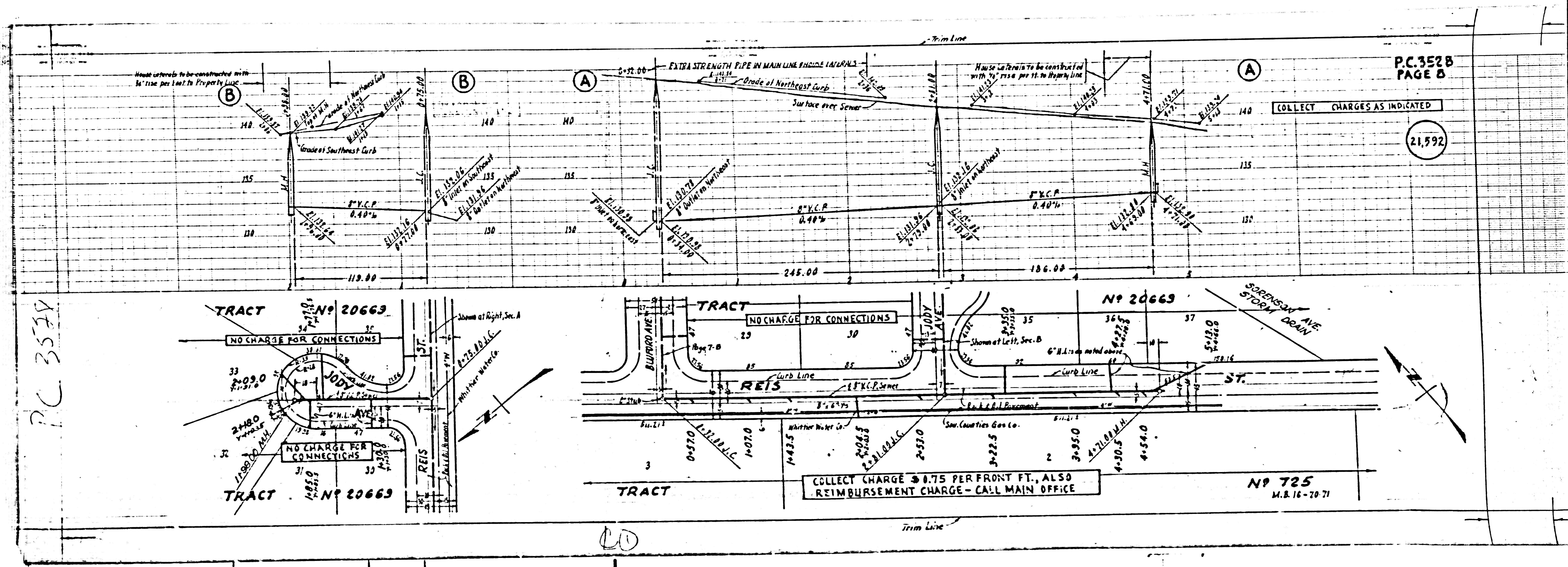
NO CHARGE FOR CONNECTIONS

21,591



F 725
M.B. 16-70-71

Trim Line

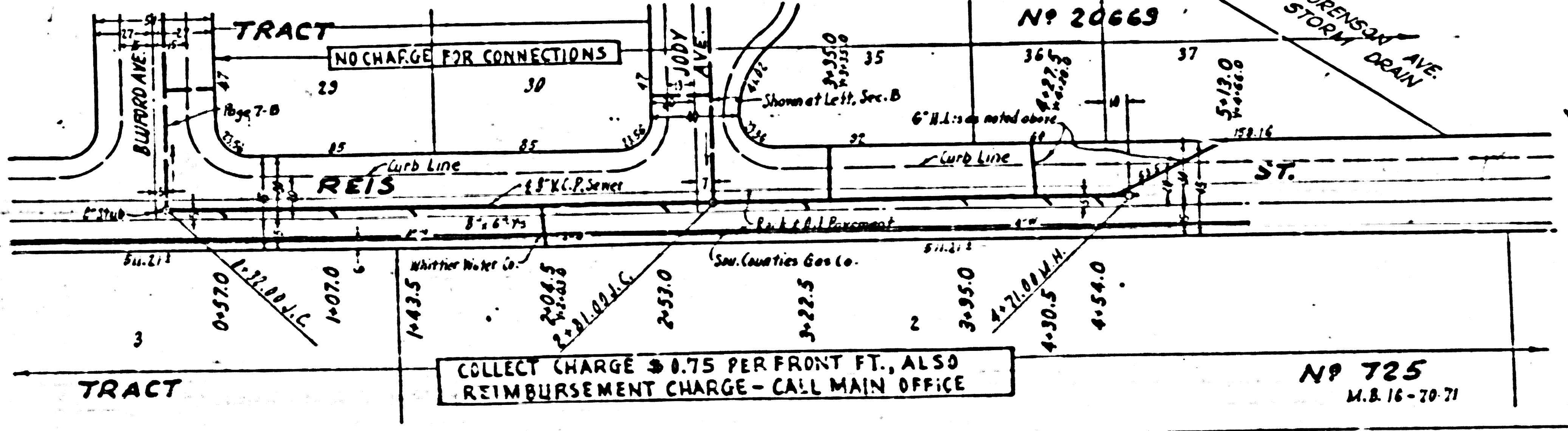
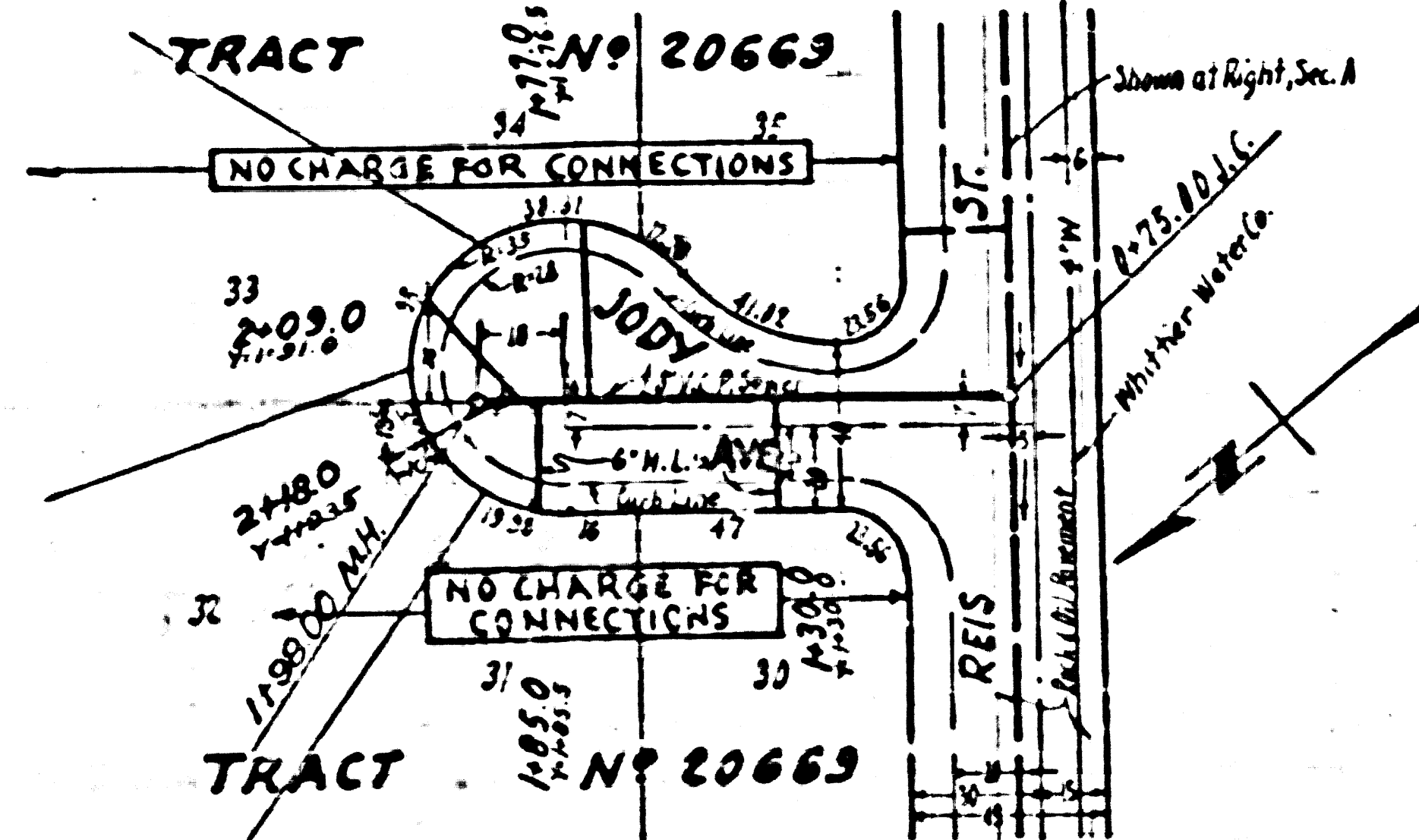


P.C. 352B
PAGE B

COLLECT CHARGES AS INDICATED

21,592

P.C. 352A



COLLECT CHARGE \$0.75 PER FRONT FT. ALSO REIMBURSEMENT CHARGE - CALL MAIN OFFICE

Nº 725
M.B. 16-70-71

LO